

Sibford Scene.

July/August 2026

Number - 485





EARTHWISE
TREE CARE

Serving North Oxfordshire, Warwickshire
Gloucestershire & Northamptonshire

Tree care with a conscience

Felling / Reductions & Crown Lifting
Pollarding / Hedge Trimming
Stump Grinding / Dead Wooding
Tree Planting

Call for a **FREE** quote from your friendly
local tree surgeon on

07806 753 862

BASED OUT OF EPWELL

www.earthwisetreecare.co.uk



ED'S THOUGHTS

Hello!

Aren't these summer days wonderful!

A bit of a change this month with a couple of great pictures from the Sibford Photography Club (front cover and page 33)

Events in the Sibfords over the next couple of months include:

Applefest - date TBC. Watch this space

July 11th - Charity Yoga for a local Leonard Cheshire Home (see page 28)

August 29th - Horti Annual Show

Thought for the month

'Oh, and when you held my hand
I knew that it was now or never
Those were the best days of my
life'

Bryan Adams'

Deadline for September Issue

12 NOON - 18th August 2026

Cover picture :

'Collecting Sap' by Stuart Ralph

The Scene Team

Editor: Tony Skowronski (780490)

E: sibfordscene@gmail.com

Advertising Mgr & Treasurer: Oonagh O'Neill (788160)

E: Advertsibfordscene@gmail.com

Distribution: Fiona Pidgeon

Distributors: Mollie Mulley, Chris Fieldhouse, Mike Spring, Alison Rippon, Sue Lovatt, Petra Berry, Jean Scouse, Aniela Duggins, Ivor Hopkyns, Clive Warner, Briony Franklin, Selina Chard, Maureen Hicks, Adrian Lamb, Megan Gilkes, Sarah Gale, Sue Etherington-Smith, Alice Pennell, Nicki Kitchen.

Advertising Rates

Quarter Page:

Black & White £40 (10 issues)

Colour £50.00 (10 issues)

Black & White £6.00 (one off advert)

Colour £8.00 (one off advert)

Half Page: (Landscape only)

Black & White £80 (10 issues)

Colour £110.00 (10 issues)

Black & White £10.00 (one off advert)

Colour £15.00 (one off advert)

Full Page:

Black & White £120.00 (10 issues)

Colour £170 (10 issues)

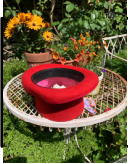
Black & White £15.00 (one off advert)

Colour £25.00 (one off advert)

You can pay for ads directly into our account: Sort Code: 60 01 35
Acct: 52612236

WELCOME TO SIBFORD

If you are new to the Sibfords and would like any advice on our village, please call Ivor Hopkyns on T: 788367 (Gower & Burdrop) or Nic Durrant T: 07972 263331 (Ferris). We are also lucky enough to have a really great village website at: thesibfords.uk



THE VILLAGE HALL LOTTERY

WIN SOME CASH!

Support the Sibford Village Hall lottery for a chance to win a cash prize every month of the year.

Join for just a one off payment of £48 and you could win a first prize of £75, second prize of £45 or third prize of £30 in every monthly draw.

The lottery provides vital funds and in the last financial year generated £1,648 towards village hall funds.

To find out how to make your payment contact Anne at crucialpr@macace.net

June winners were: 1st Joan Davies, 2nd Liz Kirkman, 3rd Sue Cook.

CONGRATULATIONS!!



LETTERS AND NOTICES

Sibford Horti Summer Show Saturday 29th August (entry night Wednesday 26th August)

Schedule will be available online on the village website to download.

Sibford Open Gardens

A big thank you to everyone that came out and support our NGS open gardens afternoon. We had smashing weather, a brilliant turnout to visit the beautiful gardens that opened and a superb tea was provided at the village hall in aid of the Church. All in all a brilliant afternoon and many thanks to all those who helped.

Carolyn White, Home Close Flowers

Sibford Cricket Club Fundraiser

We are wanting to invite the villages to the game if they fancy coming to watch and enjoy Food and a Bar and a Raffle etc. Funds go towards new covers for the Sibford and Swalcliffe Cricket Clubs and the School. (See page 9 for more details)

Simon George

Get moving for charity

Come along to Sibford Village Hall on Saturday July 11th and take part in a fun-filled fund-raising morning.

Bring your yoga mat and take part in the drop in yoga session – all abilities welcome. No need to book just turn up between 11 and 1pm .and join in.

Families can take part in a fun run with obstacles on the village hall field and there will be refreshments, a fabulous raffle and tombola.

All money raised will go to the residents of a Leonard Cheshire charity home in Banbury.

The home, Agnes Court is a residential home providing nursing care for disabled people under 65.

A small group of parents, family and friends help raise funds which make a big difference to residents – allowing for extras such as some trips away, entertainment, or flowers for the garden. (see page 14 for more details)

- Bespoke bathrooms, kitchens and carpentry
- Fitted furniture
- Plumbing and electrical works
- Home improvements and renovations



**Hugo
Seely**

Trading in the Sibfords since 1992

From concept to completion

*Exceptional value,
exceptional service*

T: 01295 780355

or 07773 319239

E: hugo.seely@gmail.com

Excellent references

**Do you need a helping hand to find the
mortgage, pension or investment
that's right for you?**



For Independent financial advice please
get in touch



SCR Financial

Call Sue for a free telephone consultation

01295788475

sue@scrfinancial.co.uk

www.scrfinancial.co.uk

Authorised and regulated by the Financial Conduct Authority FCA# 959557

Date to be confirmed



The Great Sibford APPLE FESTIVAL

Live Music . Apple Pressing . Bar . Delicious Food. Morris
Dancing . Apple Cake & Dessert Competition . Kids
Inflatables . Scarecrow Trail . Raffle

SIBFORD VILLAGE HALL - free entry



HOME CLOSE

— F L O W E R S —

Beautiful British Seasonal Flowers!

Flower stall open Thursday to Sunday for Jars and
Bunches 9am-6pm

I also supply Florist and Bridal Bouquets and Gift
Buckets for special occasions and Funeral Flowers

Contact [Carolyn@Homecloseflowers .co.uk](mailto:Carolyn@Homecloseflowers.co.uk)

07711 897902

Sustainable flowers, scented, seasonal, grown, not flown!

QUALITY FISH DIRECT
FROM GRIMSBY MARKET

Proprietor: Robert Hill

hill42804@gmail.com

07578 195979

Freshest fish and shellfish direct from
Grimsby to Sibford. Now delivering
directly to your home every Thursday
from 3.45 - 4.15



“KP Garden Care”



Local mature responsible
lady offering garden care -
no landscaping. Flexible
hours, one off or regular
visits, please call

07468487412 or email
agnewkp9596@gmail.com

THE BERT GILBERT

SIBFORD CRICKET CLUB FUNDRAISER



Join Us for an Afternoon of Cricket & Community

Family fun, great food
and friendly competition.



DATE
SUNDAY 28TH JUNE 2025



TIME
12:30PM AT THE PUB
OR 1:00PM ON THE CRICKET FIELD



VENUE
SIBFORD SCHOOL



PARKING
PARK BY THE SWIMMING POOL



EMAIL
sibfordcricketclubadmin@gmail.com

CAPTAINS 11

VS

MYSTERY 11



IN SUPPORT OF
The club and
our community
teams.



**ADMISSION
FREE**



FAMILY FUN
BBQ, bar,
raffle, music
& more!



ALL WELCOME
Come along, show
your support and
make a difference.

TOGETHER, LET'S CARRY BERT'S LEGACY FORWARD.

Bert Gilbert

[SIBFORD CRICKET CLUB](#)

[SIBFORD CRICKET CLUB](#)

[#PLAYYOURPART](#)



Original Wooden Platters & Boards

Crafted by hand at Temple Mill in the Sibfords

Trunks and branches from fallen trees planked, seasoned, designed at Temple Mill. Unique, often quirky, always useful boards for:

- ~ Presentation – Food Theatre! ~ Cake Boards ~ Cheese Boards ~
- ~ Chopping Boards ~ Serving Platters ~ Etc ~

**** 5th Wedding Anniversary: 'Wood' ****

Between Sibford Ferris and Sibford Gower. Welcome to view.

07580 597042 - jonquilsabin@hotmail.co.uk – 01295 780418

www.at-temple-mill.co.uk



Holiday Cottage in Cornwall

On the beautiful north coast in Poldark country, character cottage set in a large south-facing enclosed garden, is available for holiday lets. It is situated on the outskirts of the vibrant and friendly village of St Agnes.

Scrumbles Hollow sleeps six in three double bedrooms, one with ensuite shower room, plus a family bathroom. Full central heating.

The spacious cottage has an open fire place in a cosy sitting room, while the dining room boasts a log burner. New, fully equipped kitchen and separate utility room for sorting out sportswear after a day on the beach or walking the breathtaking countryside.

Lots of good local pubs and restaurants, shops and galleries. Excellent public transport connections, including Newquay airport (half an hour by car).

For more information, please contact Linda on 01295 780 242 or 07973 226 032 or lindalaneyolo@gmail.com.



VILLAGE HALL NEWS

Volunteer Hall Management Team We still need more volunteers with a small amount of time to help with the management of the hall. Thank you to the four volunteers who have offered their time so far and thank you the Scout Group for taking on some gardening jobs. Many jobs are “bite-sized” and could be done from home or online – we’ll be publishing a list on the village website. If you are given some volunteering time or a volunteering day as part of your job, please consider using this time to support the Village Hall.

Thursday Community Cafe 2.30 – 4.30pm We would love to welcome new members to come and join in the activities, have a chat and a cup of tea and cake! There is no charge as these events are kindly sponsored by the Town Estate Charity.

Book Swap Saturdays and Café continue: July 18th, August 15th and Sept 19th 10am-12pm, Small Hall. Come and browse a large selection of books for all ages and genres and have a drink and a chat in the Small Hall. Teas and coffees available. It’s free to borrow books but donations welcome.

Fencing: please do not climb over the fence into the horse field. If your football goes into the field, it will have to stay there until it gets thrown back.

Parking space does not include the yellow hatched area as that is for emergency access to the rear of the hall. Please park on the field if needed, now that it has dried out.

Do not walk your dog in the field: Dogs are not allowed in the field or grounds due to the risk of infection that they can pass on, especially to children.

CCTV installation and security: The grounds are now closely monitored by CCTV. Hirers, please double check that doors are locked after use. If you see anything suspicious, please photograph it and report it.

Book the Village Hall for your next event using our online booking system: When paying, please include your name and the invoice number. Preferential rates for village residents are only £12/hr (one hall); and £22/hr (both halls). Please use us for your next birthday party or community gathering.
www.sibfordvillagehall.org.uk.

Finally, the heating is off for the summer months, unless we have a cold spell.

Charlotte Davies, Village Hall Trustee

Stag's Head
 The Green,
 Swalcliffe,
 Banbury,
 Oxfordshire OX155EJ
 Tel: 01295788660
www.the-stags-head.co.uk

Opening Times

	Bar	Restaurant
Monday	12-2.30-5.00-to close	12-2.00-6.00-8.30
Tuesday	5.00-to close	closed
Wednesday	12-2.30-5.00-to close	12-2.00-6.00-8.30
Thursday	12-2.30-5.00-to close	12-2.00-6.00-8.30
Friday	12-to close	12-2.00-6.00-8.30
Saturday	12-to close	12-3.00-6.00-8.30
Sunday	12- 8.00	12-3.00

A lovely traditional thatched village pub, circa 1445. Open fire for the colder weather & pretty pub garden with countryside views covered pergola. Ales, Lagers, Cider, Guinness, Bottle Beers, Spirits International & Greek Wines. Lights Bites, Full Menu, Greek Dishes Sharing Platters & Specials. Local Products

We Have over 35 Years Experience in Hospitality
 We can also Cater for small Parties and weddings
 Contact us to Discuss your Requirements
 Check our website for up Coming Events

Greek Night Last Saturday of Every Month
Book in Advance
 Two B&B Rooms

Check our website for up Coming Events



FILM NIGHT

**This month's film is on Wednesday 29th July.
The film is "Song Sung Blue"**

Based on an incredible true story.

Mike (Hugh Jackman) and Claire (Kate Hudson) are two down-on-their-luck musicians who prove that it's never too late to find love and follow your dreams. They form a joyous Neil Diamond tribute band called Lightning and Thunder, rising from a humble garage to dive bar gig's to unexpected hometown stardom. When tragedy strikes, their love for each other and passion for music give them the strength to overcome hardships, rediscover hope, and inspire everyone around them.

Rotten tomatoes reviews 77%

Doors open at 7. Film starts at 7.30

Tea and coffee available or bring your own bottle.

Admission £5.

Please note there is no film in August

Petra Berry



FRIENDSHIP CLUB

The Friendship Club had a lovely lunch at Moreton-in - Marsh garden centre. The club thanks the staff for looking after us so well.

July meet is an afternoon of games, always competitive!

And in August, we will be having a Memory Box. We have no idea what will arrive, but always very interesting.

As usual anyone wishing to join the Club is always welcome to look us over. !

Evey Boughton



THE SEALED KNOT

LOVE HISTORY? LIVE IT WITH THE SEALED KNOT



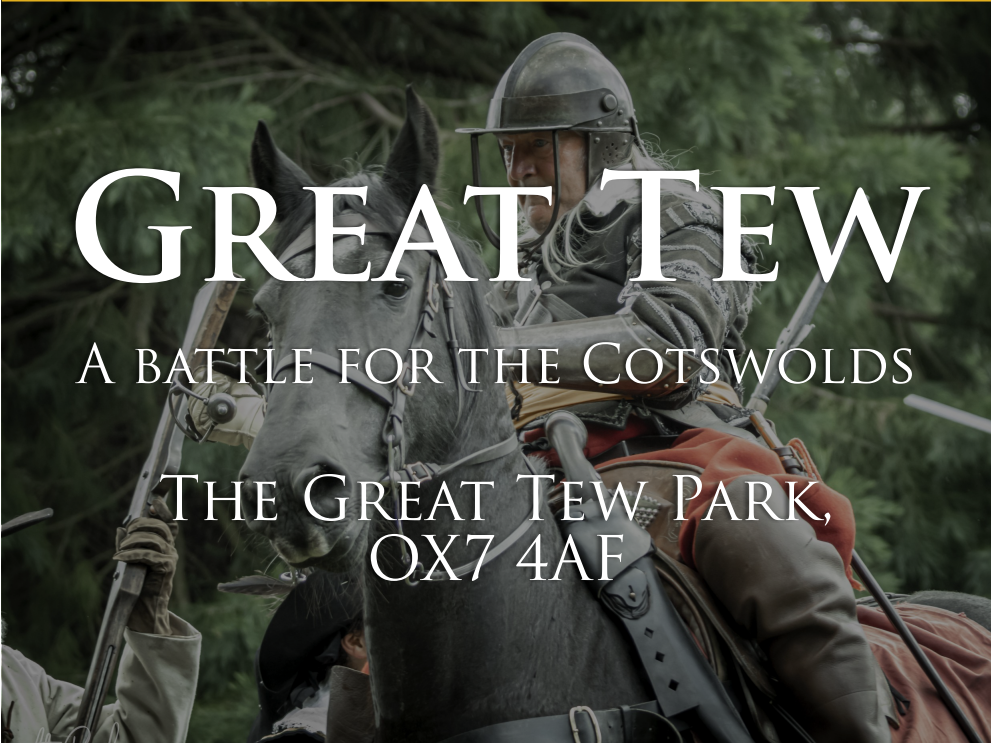
THE GREAT TEW ESTATE



GREAT TEW

A BATTLE FOR THE COTSWOLDS

THE GREAT TEW PARK,
OX7 4AF



INTERACTIVE
LIVING
HISTORY

FOOD &
DRINK

FULL DAY OF
ACTIVITIES

BATTLE
REENACTMENT

ENTRY ONLY **£20**
PER FAMILY
(2 ADULTS & 3 CHILDREN)

ADULT PRICE **£10**
CONCESSION PRICE **£5**

AUGUST 30TH &
31ST 2026

OPENING TIMES
11:00 – 17:00



STAY CONNECTED: www.thesealedknot.org.uk   [@thesealedknot](https://www.facebook.com/thesealedknot)  [@Sealed_Knot](https://twitter.com/Sealed_Knot)  [@TheSealedKnot1642](https://www.youtube.com/channel/UC...)

YOGAYOGAYOGAYOGA

Yoga for Ukraine

A drop in yoga morning has raised a massive £600 for a Ukrainian children's charity. Students of Sibford yoga teachers Juliette Glazebrook and Annalisa Sedholm made donations to join the session at the Village Hall, then enjoyed coffee and cake refreshments as a reward for all their efforts.

"We're so grateful for the support of our students for this incredibly worthwhile cause," said Juliette.

The funds will go to help two orphanages in the east of Ukraine which are dependent on charitable donations.

Sibford carpenter Matt Waring who has been driving out to Ukraine to deliver aid over the past four years, said children there need our support more than ever. "The war has stopped many children from being able to attend school so to get their education online they need tablets and laptops.

This fantastic donation will provide IT equipment for many of the children in these orphanages. I look forward to delivering them when I next drive there in July."

Matt has a Just Giving page which is open for donations. He is also appealing for essential medical supplies, even boxes of paracetamol or Ibuprofen are badly needed and can be left at Matt's home - Rye Hill Lodge, Sibford Gower.

Donate at Matthew Waring's page on <https://www.justgiving.com>

YOGAYOGAYOGAYOGA



BESPOKE DESIGN SERVICE FOR
CUSTOM MADE FURNISHINGS

**Pattern book room for you
to browse Fabric designs
Curtains, Blinds & Cushions
Loose covers & Lamsphade making
Headboards & bedspreads
Curtain poles & tracks
New Sofas & chairs & reupholstery**



07845 215814

ann@annwoolgrove.com | ann@yarnhill.co.uk

www.annwoolgrove.com

OPUS
**Property
Services Ltd**

**01295 780652
07816592124**

All aspects of property maintenance and refurbishment undertaken from replacement light bulbs and tap washers to new ceilings and floors.

Plumbing, tiling, wood flooring, floor renovation, under floor heating, plastering, electrics, decorating, damp proofing, carpentry, locks, drains, kitchens, bathrooms etc

**Call us or visit our website for
more information:
www.opusps.co.uk**

SIBFORD STORES & POST OFFICE, SIBFORD FERRIS. OX15 5RG

Tel: 01295 788317/788348

YOUR LOCAL CONVENIENCE STORE AND NEWSAGENT

We deliver newspapers and magazines, 7 days a week to all the surrounding area. Place your regular order today, whether for 1 day a week or 7. Always a wide selection of magazines, specialist titles to order.

Chilled & frozen foods, groceries, cigarettes, beers, wines and spirits, fresh fruit and vegetables, pet food, household goods, toiletries, medical requisites and lots, lots more...

Health Lottery, photocopying, fax service, dry cleaning

We will also undertake your mailings for you - just ask

Always an excellent selection of Hook Norton bottled beers in stock

Telephone your grocery order for free local delivery

OPENING HOURS

Monday - Saturday 8 am - 6.00 pm

Sunday 8am - 1.00 pm

**PLEASE SUPPORT YOUR LOCAL POST OFFICE - THERE ARE LOTS OF PRODUCTS & SERVICES
AVAILABLE ON YOUR DOORSTEP**



NATURE NOTES

Probably the most noticeable wildlife observation recently has been the influx of Painted Lady butterflies. These are the result of a most remarkable multi-generational migration. They originate in tropical Africa and migrate northward over the Sahara Desert. They then breed in Spain and France, and the offspring continue the journey. The adults that reach Britain then breed here with the caterpillars eating thistles and other plants. The resulting adult butterflies then start the return journey flying at heights above 500 metres and using the wind to achieve speeds of up to 30mph. It is estimated that in 2019 11 million adults reached the UK and 26 million left in the Autumn.

We have seen a couple of Kestrels on several occasions around the edges of the Sibford School playing fields hunting for small mammals in the long grass.

Also, on the playing fields we have seen a small flock of Starlings which seem to be becoming a rare bird around here.

Our garden pond is now teeming with insects with Large Red Damselflies being particularly noticeable.

The pond is also frequently visited by a couple of juvenile Great spotted woodpeckers coming to drink along with many other birds that come to drink or bathe in the shallow areas.

Please send any contributions for the next Nature Notes to ajnewbold88@gmail.com.

Andy and Gill Newbold



FUN CORNER

'Knock, knock'

'Who's there?'

'Aardvark'

'Aardvark who?'

'Aardvark a million miles for one of your smiles'

LOOKING TO RENT A SMALL GARAGE OR PART OF A BARN

Our garage is being demolished so looking for something similar locally

For a car, bikes, few boxes etc

Availability - July onwards

Timings - flexible, month by month, could be up to 12 months

Any ideas welcome, please contact Will 07775 728772

Home Wanted to Rent

Looking for a 2 or 3-bedroom rental in the Sibfords or nearby villages as landlord is selling. Mother and child looking to stay close to the local school.

If you know of any available properties, please get in touch via email:

georgina_anne@hotmail.com

RED HORSE VALE



Red Horse Vale are a long established and family run distributor of Fuels for heating and vehicles, as well as Building, Farm and Garden Supplies.

Solid Fuels • Logs and Kindling Wood
Gas in Cylinders • Central Heating Oil
Farm Oils • Sand and Ballast
Postcrete • Cement • Slabs
Fencing Materials • Garden Supplies
Top Soil • Composts • Flower Pots
Wood Chippings • Animal Feeds

Call us for a free quotation!

OPEN HOURS

MONDAY - SATURDAY

8am to 5pm

www.redhorsevale.co.uk

01926 642 832

Windmill Farm, Banbury Road (A422), Oxhill,
Warwickshire, CV35 0RP

Visiting Podiatrist / Chiropodist

Julia Edwards D.Pod. M. M.Ch. S. S. R.Ch.

State Registered



Special rate £40/visit

Chipping Norton - Sibford - Hook Norton

Call **07854 968377** to arrange a home visit



Here at Sibford Gower Endowed Primary School, we are developing strong links with C.A.T.S (Cotswold Arts Through Schools). Our thanks once again to ex-governor and local resident Mr Oli Broom for making the introductions. Gill Bray and her colleagues from C.A.T.S. have been in to run art workshops for both teachers and pupils over the past year. They have also been working on a local nature themed mosaic as part of our recent 400th birthday party celebrations. The completed work, based on drawings by our children and incorporating broken ceramics donated by our school families, has now been installed in the playground at the back of the school. The finished piece is full of beautiful details and the scale is perfect for our children. We are all delighted with it and really cannot thank CATS enough for this lovely birthday present which will be enjoyed by generations of children to come.



During the week before the mosaic was installed, Gill and Cally from C.A.T.S. came into school to lead mosaic workshops with all of the children so that they understood how a larger image is created from smaller pieces in mosaic work. Every child made a beautiful mosaic tile that they could take home. **Thank you C.A.T.S.**



To find out more about our wonderful, welcoming village school and the things that are going on in each class, please take some time to visit our school website at <http://www.sibford-gower.oxon.sch.uk/>



Sibford

Discover Sibford School

Local families are warmly invited to visit Sibford School and experience life at our co-educational day and boarding school, which welcomes children from Early Years through to Sixth Form.

Set in the heart of the village, Sibford is known for its friendly atmosphere, exceptional pastoral care and strong sense of community. Small class sizes and dedicated teachers help every student to develop confidence, curiosity and a love of learning.

Alongside academic success, students enjoy a wide range of opportunities in sport, performing arts, outdoor education, technology, sustainability and horticulture, enabling them to discover their interests and follow their own path.

Families considering future school places are encouraged to visit and see the school in action. Prospective families can also learn more about scholarship opportunities available for Senior School and Sixth Form entry in 2027.

Upcoming Open Events

- Friday 18 September 2026, 10.15am–12.00pm – Whole School Open Morning
- Tuesday 13 October 2026, 6.00pm–8.00pm – Sixth Form Open Evening
- Thursday 15 October 2026, 10.15am–12.00pm – Whole School Open Morning
- Friday 13 November 2026, 10.15am–12.00pm – Junior School Open Morning

To book a place, visit sibford.org.uk/events or call 01295 781203.



PILATES IN SIBFORD

Private tuition available

Madeleine Wilson M.Sc, Mat & Studio Master Teacher Offers

Bespoke One to One and Duet sessions

Training on Specialised Pilates Equipment

Reformers, Chairs, Barrels & Cadillac

Small Group Matwork Classes

For all Levels from Beginners to Advanced

Tel: 01295 780279

Mob: 07905 953300

email:madeleine@pilatesinsibford.co.uk

www.pilatesinsibford.co.uk

LETTERCARVE

Hand-carved, hardwood signs for the home and workplace.

Personalised boards and platters, stable plates and memorials.

#MadeInSibford

Browse the website:

www.lettercarve.com

e: lettercarve@gmail.com

DID YOU KNOW?

Education in the Sibfords – Our Village School - Part 5

The Second World War passed with little comment in the School Log book. On the day war was declared on July 28th 1939, there was no mention of the national news but 28 children were evacuated from Bow in East London to Sibford with their teacher. They had some of their lessons in the Friends Meeting House. Some children were billeted with local families while others slept in the attic area in the Friends Mission Room. The increased numbers of pupils meant that school lunches were taken in the Old Village Hall behind the Wykham Arms. Many lasting friendships were made with local families. School was closed for one day on 8th May to celebrate VE Day in 1945 and by 1946 the last evacuee is reported to have either left the village and returned to London or, because some had so enjoyed their time in the countryside, some remained and found alternative housing in the local and surrounding villages.

Childhood immunisation against diphtheria was introduced and the general health and well-being of the schoolchildren gradually improved. School nurses visited and recorded the height and weight of the children while dental inspections and treatment improved the dental health in the post war years

The introduction of the Education Act in 1944 recast the whole of the educational system. The Board of Education was replaced by a government minister who was to direct and control local education authorities throughout England and Wales to ensure a more even standard of educational opportunity. By 1948 our village school formed



a Parent Teacher Association and more contact with parents became established – something which has continued and flourished ever since. The educational teaching and learning was taken over by the Oxfordshire County Council in 1951 but the buildings and land remained in the ownership of the Town Estate Charity.

By 1953 pupil numbers started to rise again with 64 on roll and in 1954 a third teacher took over the reuse of the third classroom with a class of fifteen pupils. However, the heating in school was still inadequate – 4.5 degrees Centigrade in January 1956 and there were still bucket lavatories. Flush, indoor lavatories were completed in 1957, much to the joy of the caretaker, when a sewage system was completed for the village.

DID YOU KNOW?

Cont'd

Improved relationships between Sibford School and the village school resulted in benefits for both. Older pupils from the Friends School interested in working with children as teachers or in other capacities, spent time in the village school while the shared use of the heated swimming pool meant that a high percentage of the village children left the primary school each year able to swim at least 10 yards.

Maureen Hicks

Stay in style in the Sibfords

Sumptuous self-catering

Newly refurbished self-catering accommodation set in stunning private gardens with heated swimming pool, tennis court and croquet lawn. 4 beds, 5 bathrooms. Sleeps 8 (plus 4 in the main house for larger groups).

Private dinners also catered for up to 16 guests.

Contact **Sally Wass**
T: 01295 780104
E: sally.wass@btinternet.com
www.holmyhouse.com

**Holmy
House** 



The Septic Tank Store

FAMILY RUN BUSINESS WITH OVER
30 YEAR'S EXPERIENCE

Sewage Treatment Plant installation
Irrigation and waterpipe
Rain harvesting
Drainage projects
Outdoor electrical works
Ditch clearance and field drainage



Contact us for friendly advice
www.theseptictankstore.co.uk

T: 01295 236101 E: sales@theseptictankstore.co.uk



SIBFORDS WALKING GROUP

Sibford Strollers

Future dates TBA

departure from VH at 10 sharp, therefore be there by latest 9.55. I won't announce destination in advance but choose according to mud factor. They might be on foot from VH or a short drive to start/finish point. Any queries to me on 07711 131399 or sebannister@gmail.com welcome. Future dates will be added.

Sibford Striders

Sibford Striders walks (c. 2 hour walk) will take place on Wednesday 8 July and Wednesday 22 July, departing village hall at 09.30. We aim to return to the village hall by 12 noon.

There is a Sibford walkers' WhatsApp group: if you would like to join this please contact Christopher Steane +44 7703 719749

FOOTPATHS

Our footpath warden is.....**Allan Smith , Arundel House, Backside Lane 07447 423043**. Any problems or complaints, then please contact Allan.

THE VILLAGE SHOP HOOK NORTON

National Lottery

Grocery - Green grocery - Bakery - Wines

Spirits - Confectionery - Newspapers

Magazines - Cards - Bottled Gas

Open Monday to Friday

8 am to 8 pm

Saturday 8 am to 8 pm

Sunday 8 am to 6 pm

Telephone: 01608 737245

Please note: On Sunday, we open at 9am

D&D Enterprises



DAVE & DAUGHTERS
PAINTING & DECORATING

TEL: 07734 679 251

@: DAVE@DANDDENTERPRISES.CO.UK

W: WWW.DANDDENTERPRISES.CO.UK



For all your local Painting & Decorating Services



Internal & External



Domestic & Commercial



Fully Insured



Free, No Obligation Quote

www.danddenterprises.co.uk



Generations of Care

R.Locke & Son

Independent Family Funeral Directors – Est 1853



Offices at Brailes, Shipston,
Kineton and Wellesbourne

01608 685 274

For more information about our services,
to view our funeral announcements
and online donations, please visit

www.rlockeandson.co.uk

As a family owned business serving our
local area, we take great pride in offering
a dedicated and compassionate service.

GOLDEN CHARTER
FUNERAL PLANS





SIBFORDS HISTORY SOCIETY

On May 21, Heritage Advisor Stephen Barker's talk, titled 'Indian Students in Victorian Oxford', opened our eyes to a little-known aspect of Oxford student life. The first Indian visitors to Oxford University arrived as early as the end of the 18th Century. Stephen opened by giving us an understanding of Indo-British relations, focusing on the link between the universities and the Empire.

He spotlighted, in particular, prominent students, who went on to become famous later in life: Shyamiji Krisnavarma, Manmohan Ghose, peer of Oscar Wilde and himself a poet, Albion Raj Kumar, Banajeri Singh, Cornelia Sorabji, the only woman student at Somerville until 1890 and Catherine Duleep Singh, lawyer, social reformer and writer. Very few women made it to Oxford; only a bold Indian family would risk sending their daughter unchaperoned thousands of miles away.

Why did Indians come to Oxford? They entered the Indian Civil Service, or were called to the bar, or major professions, and British degrees carried more prestige. Indians found kindness from landladies, and some made lasting friendships with students and their liberal-minded families. In hindsight many spoke warmly of their time in Oxford.

We are recommended to visit the exhibition at Kensington Palace until the 8th November 2026, focusing specifically on the life of Sophia Duleep Singh, daughter of the deposed Maharajah, exiled and befriended by Queen Victoria, and sister of Catherine.

Thanks to Stephen for a very fascinating and informative, talk which could be the introduction to a lot of further study!

The Bournemouth trip has been cancelled, but instead we are going to have a talk: 'End of Term Report'. With over 70 years of service to the Friends School between them, and now keepers of the archive, Mike and Penny Spring take us on an informative and entertaining journey through the history of Sibford School.

This will be on **Thursday, 16th July**, in Sibford Village Hall. Doors open 7.15pm and the talk begins at 7.30pm. Refreshments served after the talk. Visitors £5.

Diana Hughes



Sibford Yoga and FunRun

*In aid of Leonard Cheshire
Care Home, Banbury*

SIBFORD VILLAGE HALL

**Saturday July 11th
11-1pm**

***Come and join us for some Yoga,
Fun Running for Kids
Refreshments
Raffle and Tombola!***

See you there!

*For more info
Juliette 07703 836856*

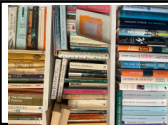


HORTI SOCIETY

On 10th July we visited the gardens of University College Oxford, ably guided by the head gardener, Tompkins Bartlett, with some enthusiastic horticulturalists attending the 'In Bloom, how plants changed our world' exhibition at the Ashmolean in the morning.

Looking ahead to August 29th, please check the Sibford website for the Summer Show programme which we hope you will print off. A few copies will be available from the village shop or by request to Gil Soden for those unable to access a printer.

We were so delighted with the quantity and the standard of the entries at the spring show that we are hoping for great things at the summer show! Sue Bannister will also be providing plants for sale. Diana Thompson



WHAT WE'RE READING



WHAT WE'RE LISTENING TO



DEAN AND CHADLINGTON SUMMER MUSIC FESTIVAL

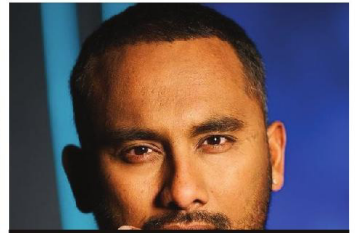
THURS 2 – SUN 5 JULY 2026



Craig Ogden and the
Aquarelle Guitar Quartet



Gala Picnic Concert



Desert Island Discs with
Amol Rajan



Adrian Bradbury

PLUS

Dinner & Opera Arias

Classical Singing
Competition

Junior Royal Birmingham
Conservatoire

Academy of Barmy
Composers



Afternoon Tea Concert
Isbourne Trio



WWW.CHADLINGTONFESTIVAL.ORG.UK
EXCEPTIONAL MUSIC, TIMELESS SETTINGS





NEIGHBOURHOOD WATCH

NEIGHBOURHOOD WATCH

SCAM ALERT

The most prominent scams currently circulating in the UK include;

1. Authorised Push Payment (APP) Fraud. Criminals impersonate banks, HMRC, or the Police, claiming your account is compromised and instructing you to transfer funds to a 'safe account'.
 2. Quishing & QR Code scams. Fraudsters use fake QR codes on parking meters, restaurant menus, or delivery slips, or email them directly to redirect you to phishing sites which steal personal and financial details.
 3. FCA Impersonation. Scammers pose as the Financial Conduct Authority (FCA) and charge fake fees for "compensation" or "anti-money laundering" clearance.
 4. Delivery and Service Phishing. Fake texts or emails claiming to be from Royal Mail, Evri, BT, or Netflix, state that you missed a package, have a parcel fee, or that your subscription has failed, pushing you to a malicious link.
 5. Consumer and Service Scams;
 - I Dodgy loft insulation. Scammers cold call home owners , usually immediately asking questions such as "are you the homeowner" or "how old are you?" before offering to install sub-standard spray foam insulation at heavily inflated prices (or other works).
 - Ii Energy Refunds & Debt Collection. Fraudsters pose as energy suppliers, offering fake refunds or claiming you have an outstanding balance following recent supplier collapses.
- 5(i) above or similar have recently been doing the rounds in our area. I know we have had most of these before, but they are pretty relentless and victims are still falling for them.

Info from Which? and local sources. Thank you. Peter Hine. Watch Co-ord Sibford and Burdrop. Tel: 788830

**Atlas
Pest and Wildlife
Control**

Locally based
For all your pest problems inc.
rodents, insects etc.

Call Phil
07768 111491
01295 367066
Never beaten on price or
professionalism



**Registration
Services**



 Oil Boiler Servicing

 Oil Aga Servicing

 New Oil Boiler Installations

Hook Norton 01608 738156

Emergency Breakdowns: 07973 128987



SIBFORD PHOTOGRAPHY CLUB

In view of the fine warm weather, we chose to rearrange our activities and visit Woodford Bottom and Lamb's Pool Nature Reserve as our May meeting. We met at the gate and ambled through the meadow, finding plants, insects and other subjects of interest to photograph as we went, before entering the area of the pool at the far end then walking back past the lake and returning through the meadow as the light was fading.

Our meeting on 30th June will give us an opportunity to review our photographs from May's outing and also members' images on our topic of "People at Work". There promise to be interesting colour and black and white photographs of people engaged in all sorts of activities and occupations to inspire, educate and entertain us. Our forthcoming meetings will be on Tuesday, 28th July and Tuesday, 25th August. If there is sufficient interest, we might also make a summer visit to the Butterfly Conservation nature reserve at Fenny Compton Tunnels.

We would like to welcome more members to the club, so if you have an interest in photography with a camera or phone, please contact Colin Lamb at colinlamb.cl@gmail.com or phone 01295 780357. We generally meet on the last Tuesday of each month at 7:00 pm in the small hall at the Village Hall.

Colin Lamb



"Farmer" by Stuart Ralph

CALENDAR OF EVENTS

JULY

- 1st - Ladies Coffee Club - Wykham Arms 11am
3rd - Mens' Breakfast Club - The George, Brailes - 9.30am
4th - SGPC meeting - Village Hall
7th - Friendship Club - Village Hall 2pm
10th - Horti visit - University College 2.30pm
11th - 'Drop-in' yoga fundraiser - Village Hall 11-1pm
16th - SHS meeting "End of Term Report" - Village Hall 7pm
18th- Book Swap Cafe - Village Hall 10am - 12pm
28th - Model Railway club - Village Hall 12pm
28th - Sibford Photography Club - Village Hall 7pm
29th - Film Night "V Song Sung Blue" - Village Hall 7.30pm

BIN COLLECTIONS

Green Tuesday: 14th;28th
Blue/Brown Tuesday: 7th; 21st

Unwanted clothing and shoes may be recycled anytime at the Textiles/
Recycling Bank at Sibford School Swimming Pool. Bottle banks at Sibford Ferris:
Elm crossroads and Sibford Gower: Wykham Arms car park.

75

SIBFORD BUS SERVICE

Sibford Ferris - Banbury

M-F: 6.19, 8.37, 11.07, 13.32, 17.34. Sat: 6.56, 8.35, 11.09, 13.32, 17.22

Banbury - Sibford Ferris

M-F: 6.50 (Term time), 7.05 (Hols), 11.40; 14.30; 18.00

Sat: 11.40, 14.30, 17.40

Sibford Ferris - Stratford

M-F: 7.13 (Term time), 7.28 (Hols), 12.03, 14.53, 18.23.

Sat: 12.03, 14.53, 18.03

Stratford - Sibford Ferris

M-F: 5.40, 7.30, (Term Time), 7.35 (Hols), 10.30, 12.50, 16.25. Sat: 6.17, 7.57, 10.30, 12.50, 16.40

**No service on Sundays or
Bank Holidays**

Your Local Locksmith.

07743143742



Annalisa Sederholm

yoga

massage

an invitation to create space for stillness, energy & peace

07928098018
info@organic-living.co.uk
www.organic-living.co.uk



FHT
COMPLEMENTARY • BEAUTY • SPORTS



YOGA

SIBFORD VILLAGE HALL

FLOW YOGA

WEDNESDAYS 9-10AM

CHAIR YOGA

MONDAYS 10-11

WEDNESDAYS 10.15-11.15



YIN YOGA

EVERY 2 WEEKS

ANY ENQUIRIES TO:

JULIETTE53@BTINTERNET.COM

07703 836856

LOCAL LOGS DELIVERED

Two Yrs barn dried
8" and 12" available

Also available bagged
kindling.

07816 379 836

Celebrating 70 Years

1952-2022

The Forge Garage (Brailes) Ltd

Your local, family-run garage.

MOT's, Servicing, Air Conditioning, Diagnostics and In-Depth Repair Work

Pump attended fuel station also selling Calor gas, kindling, coal, BBQ coal
We're here to help so please contact us today on 01608 685247 if you have any questions
about your vehicle, or for a free no-obligation quote.



<https://www.theforgegarage.co.uk/>
Telephone: 01608 685247;
Email: enquiries@theforgegarage.co.uk

