



Sibford Scene.

May 2026

Number - 483



EARTHWISE
TREE CARE

Serving North Oxfordshire, Warwickshire
Gloucestershire & Northamptonshire

Tree care with a conscience

Felling / Reductions & Crown Lifting
Pollarding / Hedge Trimming
Stump Grinding / Dead Wooding
Tree Planting

Call for a **FREE** quote from your friendly
local tree surgeon on

07806 753 862

BASED OUT OF EPWELL

www.earthwisetreecare.co.uk



ED'S THOUGHTS

Artweeks is here!

9-12th at the Village Hall and
9-17th at the Old Mission Hall
Studios & Shruberry Cottage
Studio

And, this month we have a couple
of features that I had no space
for in previous issues: The
Montane Winter Spine Challenger
South Race (p 23) and The
Great Wall of China Trek (p 14)

Don't forget The Spring Horti
Show on the 16th

Some great photos on page 33,
too!

Thought for the month

Tonight we'll go and paint this
town

We're gonna drink champagne
till we both fall down

And we'll find some other crazy
dream tomorrow

Paul Brady

Deadline for June Issue

12 NOON - 18th May 2026

Cover picture :

"Church Blossom" by Zosia
Skowronska

The Scene Team

Editor: Tony Skowronski (780490)

E: sibfordscene@gmail.com

Advertising Mgr & Treasurer: Oonagh
O'Neill (788160)

E: Advertsibfordscene@gmail.com

Distribution: Fiona Pidgeon

Distributors: Mollie Mulley, Chris
Fieldhouse, Mike Spring, Alison Rippon,
Sue Lovatt, Petra Berry, Jean Scouse,
Aniela Duggins, Ivor Hopkyns, Clive
Warner, Briony Franklin, Selina Chard,
Maureen Hicks, Adrian Lamb, Megan
Gilkes, Sarah Gale, Sue Etherington-
Smith, Alice Pennell, Nicki Kitchen.

Advertising Rates

Quarter Page:

Black & White £40 (10 issues)

Colour £50.00 (10 issues)

Black & White £6.00 (one off advert)

Colour £8.00 (one off advert)

Half Page: (Landscape only)

Black & White £80 (10 issues)

Colour £110.00 (10 issues)

Black & White £10.00 (one off advert)

Colour £15.00 (one off advert)

Full Page:

Black & White £120.00 (10 issues)

Colour £170 (10 issues)

Black & White £15.00 (one off advert)

Colour £25.00 (one off advert)

You can pay for ads directly into our
account: Sort Code: 60 01 35
Acct: 52612236

WELCOME TO SIBFORD

If you are new to the Sibfords and would like any advice on our village, please call Ivor Hopkyns on T: 788367 (Gower & Burdrop) or Nic Durrant T: 07972 263331 (Ferris). We are also lucky enough to have a really great village website at: thesibfords.uk



THE VILLAGE HALL LOTTERY

SUPPORT OUR VILLAGE HALL AND WIN!

Support the Sibford Village Hall lottery for a chance to win cash prizes every month of the year.

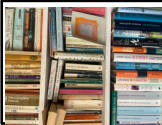
For a one off payment of £48 you could win a first prize of £75, second prize of £45 or third prize of £30 in every monthly draw.

The lottery provides vital funds and in the last financial year generated **£1,648** towards village hall funds.

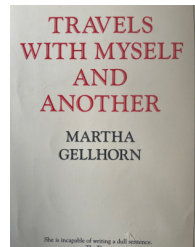
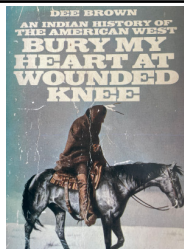
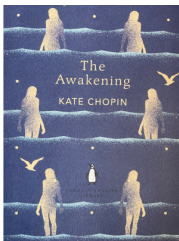
To find out how to make your payment contact Anne at crucialpr@macace.net

April winners were

First Prize Mary Nash, Second prize Nicola Durrant, Third prize Philip Hilton



WHAT WE'RE READING





LETTERS AND NOTICES



ARTWEEKS FESTIVAL

The Festival runs from May 2nd to 25th over the whole of Oxfordshire. More than a thousand artists, makers and designers will exhibit and demonstrate in artist studios , pop-up galleries, glorious gardens, ancient churches, schools, colleges and village halls.

See paintings , ceramics , sculpture, photography , glass, jewellery, woodwork, and textiles.

North Oxfordshire Artweeks start from May 9th to 17th. and every venue has free entry. www.artweeks.org

SIBFORD VILLAGE HALL is VENUE 255 and you will be welcomed by Ginny Bennett , Sue Levitch, Judith Waywell and Corina Titman. All local artists, with a wide variety of painted art.

We will be open from Saturday , May 9th until Wednesday May 12th - 11am to 5pm.Refreshments available. Ginny Bennett



Holy Trinity church will be supporting **Christian Aid week, 9 - 16 May.** Envelopes are to be delivered to homes in The Sibfords and Burdrop with collection points at The Post Office, Sibford Ferris; The Surgery, Burdrop and The Rectory in Sibford Gower 2, Sycamore Close. To start off the week there will be a COFFEE MORNING in our recently reorganised church with Filtered Coffee, Speciality Teas, cake and toasted teacakes. Please drop in before or after your visit to Carters Yard, Main Street, Sibford Gower to buy plants from Sue Bannister a Horti. Fundraising event open to all. Thank you.

- Bespoke bathrooms, kitchens and carpentry
- Fitted furniture
- Plumbing and electrical works
- Home improvements and renovations



**Hugo
Seely**

Trading in the Sitfords since 1992

From concept to completion

*Exceptional value,
exceptional service*

T: 01295 780355

or 07773 319239

E: hugo.seely@gmail.com

Excellent references

**Do you need a helping hand to find the
mortgage, pension or investment
that's right for you?**



For Independent financial advice please
get in touch



SCR Financial

Call Sue for a free telephone consultation

01295788475

sue@scrfinancial.co.uk

www.scrfinancial.co.uk

Authorised and regulated by the Financial Conduct Authority FCA# 959557



LETTERS AND NOTICES

Sibford Gower Parish Council

How to report potholes (and other issues on our roads!)

We are aware that there are a rapidly growing number of potholes in and around Sibford Gower and the surrounding areas (and across the country!). These are the responsibility of Oxfordshire County Council (OCC) and the only way they will get fixed is if OCC have been made aware of them.

The best way to report issues to OCC is using the online reporting system 'fixmystreet.com'.

The fixmystreet system allows the reporting of all sorts of things, including potholes, faded road markings, damaged road signs, Rights of Way issues, overgrown verges (particularly important to report if they are impacting visibility for road users at junctions), blocked drains, fly-tipping, and much more.

Please report any issues you see on fixmystreet.com, ideally with a picture (you can report on your mobile phone while at the site of the issue so it logs the location and you can upload a picture), which should give us the best chance of getting the issues that affect us resolved.

The Results are In: Meet Your New Parish Councillors

The nomination period for the Sibfords Parish Councils has now closed. Because the councils were not contested, no formal ballot will take place this year.

Sibford Gower is now at full strength with five members: Alan Berks, Roger Mallows, Zoe Wesson, Jakie Noquet, and Peter Hine.

Sibford Ferris will begin the new term with three members: Virginia Bennett, Michael Gordon, and David Abecassis. This means there are still **two seats available** for anyone wishing to get involved in local matters!

Interested in joining? We would love to hear from you. To find out more about being co-opted onto Sibford Ferris Parish Council, please email the Clerk: sfpc@thesibfords.org.uk.



HOME CLOSE

— F L O W E R S —

Beautiful British Seasonal Flowers!

Flower stall open Thursday to Sunday for Jars and
Bunches 9am-6pm

I also supply Florist and Bridal Buckets and Gift Buckets
for special occasions and Funeral Flowers

Contact Carolyn@Homecloseflowers.co.uk

07711 897902

Sustainable flowers, scented, seasonal, grown, not flown!

QUALITY FISH DIRECT
FROM GRIMSBY MARKET

Proprietor: Robert Hill

hill42804@gmail.com

07578 195979

Freshest fish and shellfish direct from
Grimsby to Sibford. Now delivering
directly to your home every Thursday
from 3.45 - 4.15





OUT AND ABOUT WITH ED.



This month I want to highlight the amazing "Orinoco" on the High Street in Banbury. You can pretty much get anything from this very successful 'scrapstore' The staff are super and very helpful and actively encourage you to get involved with re-using scrap items. Here is what they say:

Our mission is:

"To banish boredom and save the planet using creativity and play to inspire the reuse of materials"

Over its 25 year history, Orinoco has saved lorry loads of interesting resources from ending up in landfill and turned them into fabulous and inspiring items.

We sell scrap items for art, crafts, play and creative projects as well as new art materials, refurbished tools and DIY stuff. You can even book a birthday party, craft lessons join our workshops...

And we encourage children to play with scrap items based on their favourite things.

Lisa Hawtin



Original Wooden Platters & Boards

Crafted by hand at Temple Mill in the Sibfords

Trunks and branches from fallen trees planked, seasoned, designed at Temple Mill. Unique, often quirky, always useful boards for:

- ~ Presentation – Food Theatre! ~ Cake Boards ~ Cheese Boards ~
- ~ Chopping Boards ~ Serving Platters ~ Etc ~

**** 5th Wedding Anniversary: 'Wood' ****

Between Sibford Ferris and Sibford Gower. Welcome to view.

07580 597042 - jonquilsabin@hotmail.co.uk – 01295 780418

www.at-temple-mill.co.uk



Holiday Cottage in Cornwall

On the beautiful north coast in Poldark country, character cottage set in a large south-facing enclosed garden, is available for holiday lets. It is situated on the outskirts of the vibrant and friendly village of St Agnes.

Scrumbles Hollow sleeps six in three double bedrooms, one with ensuite shower room, plus a family bathroom. Full central heating.

The spacious cottage has an open fire place in a cosy sitting room, while the dining room boasts a log burner. New, fully equipped kitchen and separate utility room for sorting out sportswear after a day on the beach or walking the breathtaking countryside.

Lots of good local pubs and restaurants, shops and galleries. Excellent public transport connections, including Newquay airport (half an hour by car).

For more information, please contact Linda on 01295 780 242 or 07973 226 032 or lindalaneyolo@gmail.com.



VILLAGE HALL NEWS

Ginny's retirement from Village Hall duties? We are delighted that three volunteers have offered to take over some of Ginny's many jobs at the Village Hall – more details coming soon. There are more opportunities to help, so if you have any skills or interests and can be a regular helper in any small way, then please contact Ginny 01295 780373

Thursday Community Cafe 2.30 – 4.30pm We would love to welcome new members to come and join in the activities, have a chat and a cup of tea and cake! There is no charge as these events are kindly sponsored by the Town Estate Charity.

Book Swap Saturdays and Café continue: May 23rd, June 20th and July 18th 10am–12pm, Small Hall. Come and browse a large selection of books for all ages and genres and have a drink and a chat in the Small Hall. Teas and coffees available. It's free to borrow books but donations welcome.

CCTV installation and security: The grounds are now closely monitored by CCTV. Hirers, please double check that doors are locked after use. If you see anything suspicious, please photograph it and report it.

Fencing: please do not climb over the fence into the horse field. If your football goes into the field, it will have to stay there until it gets thrown back.

Parking space does not include the yellow hatched area as that is for emergency access to the rear of the hall. Please park on the field if needed, now that it has dried out.

Book the Village Hall for your next event using our online booking system: When paying, please include your name and the invoice number. Preferential rates for village residents are only £12/hr (one hall); and £22/hr (both halls). Please use us for your next birthday party or community gathering.
www.sibfordvillagehall.org.uk.

Charlotte Davies, Village Hall Trustee

Stag's Head
 The Green,
 Swalcliffe,
 Banbury,
 Oxfordshire OX155EJ
 Tel: 01295788660
www.the-stags-head.co.uk

Opening Times

	Bar	Restaurant
Monday	12-2.30-5.00-to close	12-2.00-6.00-8.30
Tuesday	5.00-to close	closed
Wednesday	12-2.30-5.00-to close	12-2.00-6.00-8.30
Thursday	12-2.30-5.00-to close	12-2.00-6.00-8.30
Friday	12-to close	12-2.00-6.00-8.30
Saturday	12-to close	12-3.00-6.00-8.30
Sunday	12- 8.00	12-3.00

A lovely traditional thatched village pub, circa 1445. Open fire for the colder weather & pretty pub garden with countryside views covered pergola. Ales, Lagers, Cider, Guinness, Bottle Beers, Spirits International & Greek Wines. Lights Bites, Full Menu, Greek Dishes Sharing Platters & Specials. Local Products

We Have over 35 Years Experience in Hospitality
 We can also Cater for small Parties and weddings
 Contact us to Discuss your Requirements
 Check our website for up Coming Events

Greek Night Last Saturday of Every Month
Book in Advance
 Two B&B Rooms

Check our website for up Coming Events



NATURE NOTES

Since writing the last Nature Notes we have had several more visits from a Blackcap and a Siskin to the garden bird feeders. I am sure most people are aware of the advice from the RSPB that it would be better not to feed garden birds on nuts and seeds from May 1st until the end of October. This is to hopefully reduce the spread of diseases, especially trichomonosis that is thought to be responsible for the massive decline in numbers of Greenfinches and Chaffinches. We will be following this advice and just using fat balls which are thought to be less risky.

We spent some time in the garden watching a Wren collecting moss and taking it into a juniper bush where presumably it was building a nest. We have also seen a pair of Song Thrushes and often hear them breaking open snails by hitting them against convenient stones.

Barbara Crabtree spotted a Redwing and a Fieldfare in late March. These were presumably stragglers from the overwintering flocks that visit the UK.

The patch of Coltsfoot on the bank opposite the Manor in Sibford Ferris seems to have spread considerably over the last few years. The flowers that appear before the leaves were impressive this year.

The butterflies that hibernated over the winter months have now been joined by newly emerged Holly Blues, Orange-tips and Speckled Woods.

The new moth season is now getting underway, and it was nice to see the first Chocolate-tip.

Please send contributions for the next Nature Notes to ajnewbold88@gmail.com

Andy and Gill Newbold



Chocolate - tip moth

Great Wall of China Trek ~ October 2026

February 2026

Three of us, Nic, Eva and I, who used to work together at Katharine House Hospice, have, independently of one another, signed up to walk a section of The Great Wall of China. This will take place in October 2026, as a fundraising trip arranged by the hospice and 'The Different Travel Company.' Both Nic and I live in Sibford Ferris and Eva is nearby.

This hospice is important to me—I worked on the ward, and in the community team, overall for about 8 years. My experience there was formative in many ways, giving me the skills and confidence to take a role as a nurse in the 'Hospice at Home' charity, Lawrence Nurses, based in Chipping Norton.

Nic still works at the hospice, as a deputy ward sister, and is passionate the importance of holistic, high quality care for palliative patients and those at the end of life. She is acutely aware of the shortfall in funds for this level of care to be possible.

Dr Rachel Clarke, a palliative care doctor and a journalist who worked at the hospice during my time there writes regularly for The Guardian. In a piece on 10th November 2025 she wrote this: *Remarkably, the famously “cradle to grave” NHS funds only about 30% of hospice care in the UK. The shortfall is made up from charitable donations: the goodwill of local individuals and businesses stepping in where the state has chosen to walk away.*

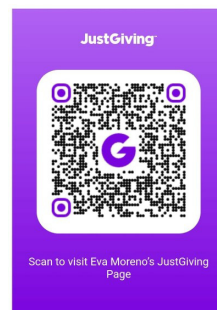
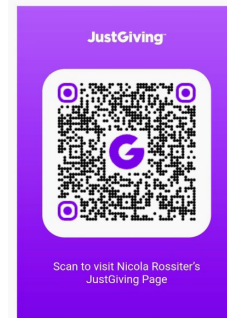
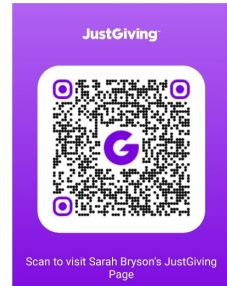
Nic, Eva and I have decided to do some training together, to get fit enough to tackle the steep inclines and descents along the wall, and for this purpose we have formed a what's app group, 'China Girls.'

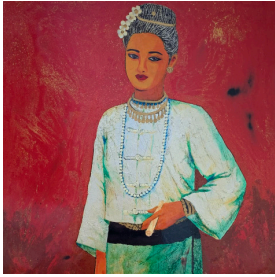
If you'd like to support our endeavours we would be most grateful. Here are the links to our Just Giving pages

Nic: https://www.justgiving.com/page/nicola-rossiter-6?utm_medium=FR&utm_source=CL

Eva: https://www.justgiving.com/page/eva-moreno?utm_medium=FR&utm_source=CL

Sarah: https://www.justgiving.com/page/sarah-bryson-5?utm_medium=FR&utm_source=CL





Phyu Gordon & Rhiannon Evans
9th-17th May
Site 254
The Old Mission Hall Studios,
Sibford Gower, Banbury OX15 5RX
///later.making.universal



Phyu Gordon and Rhiannon Evans share a unique studio in **The Old Mission Hall, Sibford Gower.** Their common concerns are the natural world, local and global culture, heritage and memory.

Phyu is originally from Burma. Her practice focuses on portrait paintings especially in water colour and the specialist technique of lacquer painting which she learnt in Vietnam. She will also be showing the process of making. She paints local landscape and still life in oil and acrylic as well. She has lived in many different countries in the last 20 years and creates paintings that reflect her experiences of people and cultures.

Rhiannon's paintings, drawings and sculpture use semi-transparent surfaces and take varying forms from loose, unbound, unframed leaves to 3D collages and dynamic triptychs. They refer to historical traditions & archival methods and materials. They engage with the boundaries between technology, the natural world and community where she feels confusion and conflict may arise in everyday life.



BESPOKE DESIGN SERVICE FOR
CUSTOM MADE FURNISHINGS

**Pattern book room for you
to browse Fabric designs
Curtains, Blinds & Cushions
Loose covers & Lamsphade making
Headboards & bedspreads
Curtain poles & tracks
New Sofas & chairs & reupholstery**



07845 215814

ann@annwoolgrove.com | ann@yarnhill.co.uk

www.annwoolgrove.com

OPUS
**Property
Services Ltd**

**01295 780652
07816592124**

All aspects of property maintenance and refurbishment undertaken from replacement light bulbs and tap washers to new ceilings and floors.

Plumbing, tiling, wood flooring, floor renovation, under floor heating, plastering, electrics, decorating, damp proofing, carpentry, locks, drains, kitchens, bathrooms etc

**Call us or visit our website for
more information:
www.opusps.co.uk**

SIBFORD STORES & POST OFFICE, SIBFORD FERRIS. OX15 5RG

Tel: 01295 788317/788348

YOUR LOCAL CONVENIENCE STORE AND NEWSAGENT

We deliver newspapers and magazines, 7 days a week to all the surrounding area. Place your regular order today, whether for 1 day a week or 7. Always a wide selection of magazines, specialist titles to order.

Chilled & frozen foods, groceries, cigarettes, beers, wines and spirits, fresh fruit and vegetables, pet food, household goods, toiletries, medical requisites and lots, lots more...

Health Lottery, photocopying, fax service, dry cleaning

We will also undertake your mailings for you - just ask

Always an excellent selection of Hook Norton bottled beers in stock

Telephone your grocery order for free local delivery

OPENING HOURS

Monday - Saturday 8 am - 6.00 pm

Sunday 8am - 1.00 pm

**PLEASE SUPPORT YOUR LOCAL POST OFFICE - THERE ARE LOTS OF PRODUCTS & SERVICES
AVAILABLE ON YOUR DOORSTEP**



HORTI SOCIETY

"The flower farmer's year"

We have our very own flower farmer in the Sibfords; Carolyn White, she began her talk with a short history British grown flowers. In the 1940's the Isles of Scilly alone produced an astonishing 200 million stems of deliciously scented narcissi. Today, 86% of the flowers we buy come from just 5 countries; Columbia, Kenya, Ethiopia, Ecuador and the Netherlands. Most of these flowers will have been genetically modified not to produce scent, which gives them a longer vase life, not to mention the thousands of air miles and the obligatory chemical spraying to avoid bringing unwanted pests into the country. In contrast, Carolyn grows her flowers in a totally sustainable way. Through her flower growing she has learned to work with nature and to grow seasonally, tailoring her choice of plants to encourage biodiversity and taking a long-time environmental approach. Central to this approach is the focus on soil health and she has moved away from using chemical fertilisers preferring to "feed the soil and not the plant". She has also learned the art of bee keeping as part of her venture. There are huge benefits to growing in this way not least the health and high quality of the flowers and increased vase life compared with commercially grown ones. This kind of growing is not for the faint hearted as Carolyn admitted, when she sees greenfly she has to hold her nerve and wait for the ladybirds to find their lunch.

These are Carolyn's key crops:

Spring: narcissi, tulips, ranunculus, cerinthe major, blue bell, sweet cicely, hazel and raspberry (she uses the young foilage in her bouquets)

Summer: peony, saponaria, nigella, lupins, agrostemma, bupleurum and ammi visnaga

Mid Summer: roses, alchemilla mollis, sweet peas, snapdragon and phlox

Late Summer: dahlia, cosmos, limonium, astrantia, scabious, feverfew, sedum and fountain grass.

And don't forget the herbs: sage, rosemary, mint, borage and fennel

Unusually, the flower farmer's year begins in June with the sowing of biennials for example this is when Carolyn sows lunaria, foxglove, sweet rocket, sweet william, and canterbury bells.

In September she sows hardy annuals e.g. antirrhinum, saponaria, nigella, cerinthe major, corncockle, rudbeckia and in winter her sweet peas.

In February she does another sowing of hardy annuals plus strawflowers, orleya grandiflora, ammobiium and stock

In March, celosia and sunflower

And in April tender annuals e.g. cosmos, amaranth, zinnia, marigolds, grasses and basils



HORTI SOCIETY

Cont'd

You can never have enough greenery for example, physocarpus, pittosporum, beech, hazel, willow, whilst not forgetting the humble ivy.

Carolyn also gave us numerous tips, for example, if you grow cosmos make sure to deadhead them in the evening and pick in the early morning before the sun gets up and the bees arrive. An unpollinated flower has a much longer vase life than a pollinated one. Other tips to help prolong vase life: dip stems that are prone to flop in boiling water for a few seconds; remove all foliage below the waterline; rest stems for several hours in the cool before arranging; snip the ends and change the water regularly.

It was wonderful to learn that, although this is a commercial venture, Carolyn is doing it in a highly sustainable way, nurturing the soil, the plants and the insect life to everyone's benefit and with zero air miles.

To round off the evening, Carolyn created a beautiful bouquet which was raffled and given to one of our lucky members.

Here is a link to her website:

<https://www.homecloseflowers.co.uk/>

Véronique Tyrrell

Home Wanted to Rent

Looking for a 2 or 3-bedroom rental in the Sibfords or nearby villages as landlord is selling. Mother and child looking to stay close to the local school.

If you know of any available properties, please get in touch via email:

georgina_anne@hotmail.com

RED HORSE VALE



Red Horse Vale are a long established and family run distributor of Fuels for heating and vehicles, as well as Building, Farm and Garden Supplies.

Solid Fuels • Logs and Kindling Wood
Gas in Cylinders • Central Heating Oil
Farm Oils • Sand and Ballast
Postcrete • Cement • Slabs
Fencing Materials • Garden Supplies
Top Soil • Composts • Flower Pots
Wood Chippings • Animal Feeds

Call us for a free quotation!

OPEN HOURS

MONDAY - SATURDAY

8am to 5pm

www.redhorsevale.co.uk

01926 642 832

Windmill Farm, Banbury Road (A422), Oxhill,
Warwickshire, CV35 0RP

Visiting Podiatrist / Chiropodist

Julia Edwards D.Pod. M. M.Ch. S. S. R.Ch.

State Registered



Special rate £40/visit

Chipping Norton - Sibford - Hook Norton

Call **07854 968377** to arrange a home visit



We have an exciting and busy summer term ahead here at school. With the arrival of warmer weather, we are delighted to be making the most of our beautiful grounds, with children spending even more time learning outdoors. Forest School sessions and Woodland Days have begun, and our P.E. lessons have moved outside, making the most of the fresh air and open space.

Although learning continues right through to the end of the academic year, the completion of Year 6 SATs in May, along with the range of activities planned for the summer months, brings a noticeable sense of energy and enjoyment across the school. It is a special time of year, particularly for our Year 6 pupils, as we focus on creating happy memories and celebrating their time with us before they move on to the next stage of their journey. We look forward to sharing more of these moments with you over the coming months.

It currently looks like all of our Reception places for next year have now been filled.

We have a lovely group of children and families who will either be joining us or continuing with us as children move on from our Nursery provision. We do still have some places in Nursery for September for children who have their third birthday before September 1st 2026. If you wish to make an application for a September start you can find all the information you need, including a downloadable copy of our application form, on the Nursery Admissions page of our school website at

<https://www.sibford-gower.oxon.sch.uk/nursery-provision--admission.html>

Please do contact the school office if you would like to come in for a tour and a chat.

Charity Fundraiser for ‘Freddie’s Future’

We couldn't be prouder of our children, who recently took part in our 'Fun Run for Freddie's Fund'. This was a truly inclusive event, supporting an important local charity that raises awareness, funds vital research, and provides support for families affected by bone cancer. The enthusiasm, determination, and community spirit shown by the children made the day incredibly special.

A heartfelt thank you goes to our amazing families and the wider community for their generous support and encouragement. So far, we have raised over £950 for this cause. We are so fortunate to be part of such a caring and supportive school community here at Sibford Gower, and events like this really highlight the difference we can make when we come together.

If you want to find out more about 'Freddie's Future' just type this link into your browser.

<https://specialfunds-bcrt.blackbaud-sites.com/freddies-future/>

To find out more about our wonderful, welcoming village school and the things that are going on in each class, please take some time to visit our school website at

<http://www.sibford-gower.oxon.sch.uk/>



Sibford

Discover Sibford School

Sibford is a co-educational day and boarding school from Early Years to Sixth Form. A school that is passionate about empowering young people with the skills, self-belief, and spirit to take their place in the world.

Focused on the needs of the individual child, Sibford encourages them to explore, discover, and challenge their potential. And they do. Students leave with an inner confidence and a clear sense of where they want to go in life.

Sibford believes that academic success is driven by outstanding pastoral care and a well-rounded education. The open and calm environment gives students the confidence and mindset to work to their full potential. A vibrant and varied curriculum enriched by a wealth of co-curricular activities encourages individuals to discover and follow their own path, whether it's a traditional academic one, creative arts, technology or horticulture.

Small class sizes with dedicated teachers nurture, inspire and stretch students, giving them the space to collaborate, challenge and be creative in their learning.

Sibford places great value on human experience, collaboration and connection, so encourages families to come and experience the school for themselves.

Join a whole school open morning

Friday 1 May, 10.15am

Friday 26 June, 10.15am

Visit sibford.org.uk/events to book your place, or call our Admissions Registrar on 01295 781203.



PILATES IN SIBFORD

Private tuition available

Madeleine Wilson M.Sc, Mat & Studio Master Teacher Offers

Bespoke One to One and Duet sessions

Training on Specialised Pilates Equipment

Reformers, Chairs, Barrels & Cadillac

Small Group Matwork Classes

For all Levels from Beginners to Advanced

Tel: 01295 780279

Mob: 07905 953300

email:madeleine@pilatesinsibford.co.uk

www.pilatesinsibford.co.uk

LETTERCARVE

Hand-carved, hardwood signs for the home and workplace.

Personalised boards and platters, stable plates and memorials.

#MadeInSibford

Browse the website:

www.lettercarve.com

e: lettercarve@gmail.com

The Montane Winter Spine Challenger South Race: My Winter Ultra Adventure

The Spine race is one of Britain's most demanding endurance races and has a number of iterations from the full Spine— all 268 miles of the Pennine Way— to 'sprints': a mere 46 miles (south version) or 43 miles (north version). My race was the Winter Challenger South, 108 miles along the Pennine Way from Edale to Hawes to be completed within 60 hours. It's an unsupported, non-stop race with only one checkpoint where you can refuel and rest for up to 6 hours (if you wish) and a monitoring station further up the course where you can get hot water and rest for up to 30 minutes. This means that you're required to be self-sufficient and to keep going for the duration without designated stops. This is what appealed to me: the prospect of an adventurous, expeditionary way of racing across relatively remote terrain.

Such a race requires focus, mental fortitude and the ability to problem-solve in relentless, hostile conditions. The organisers describe the event as 'more than a race, it's a battle of survival'. This January, following the wake of Storm Goretta, the course threw everything it could at us: deep snow on the fell tops, sheet ice for the duration, relentless headwinds with 80km gusts and freezing side rain. These conditions tested me to my limits and my pace was at a crawl at times, but what an epic adventure! It threw so much into the mix; nothing was a given. Many runners had to drop out (or DNF – Did Not Finish) due to injuries from falling on the ice, hypothermia or becoming so fatigued they no longer felt safe to make sensible decisions. My strategy of keeping it slow and steady and buddying up later on proved to be instrumental to my completion.

Bivvying in a bird hide with seven strangers for an hour or so of essential shut-eye proved to be a highlight! It was good to use the mandatory kit we were required to carry and find that it was effective. Despite the cold wind blowing in across Malham Tarn, I was warm in my sleeping bag that I had been carrying all this way. I also learnt to have confidence in my ice spikes, another item of essential kit. Although they ended up wrecking my feet and running shoes, they stayed on for virtually the whole race, ensuring that I remained upright!

152 runners toed the start line with 82 successfully making it to the finish, representing a 54% finish rate. I completed in 52:15:47, 68th overall and 19th lady. It was reported that this was the most challenging of conditions experienced yet on this course, giving credit to 'Britain's most brutal race' but I'd also add 'beautiful' to that description. Will I be back for more? Where do I sign up?!

Philippa Martindale

C. A. Berger

Painting & Decorating
Interiors & Exteriors
Residential & Commercial
Carpentry Repairs
and
Property Maintenance

Mobile: 07875 212 315

Office Tel/Fax:
01295 738633

THE VILLAGE SHOP HOOK NORTON

National Lottery

Grocery - Greengrocery - Bakery - Wines
Spirits - Confectionery - Newspapers
Magazines - Cards - Bottled Gas
Open Monday to Friday
8 am to 8 pm
Saturday 8 am to 8 pm
Sunday 8 am to 6 pm
Telephone: 01608 737245

Please note: On Sunday, we open
at 9am

Stay in style in the Sibfords

Sumptuous self-catering

Newly refurbished self-catering accommodation set in stunning private gardens with heated swimming pool, tennis court and croquet lawn. 4 beds, 5 bathrooms. Sleeps 8 (plus 4 in the main house for larger groups).

Private dinners also catered for up to 16 guests.

Contact **Sally Wass**
T: **01295 780104**
E: sally.wass@btinternet.com
www.holmbyhouse.com

Holmby
House 



The Septic Tank Store

FAMILY RUN BUSINESS WITH OVER
30 YEAR'S EXPERIENCE

Sewage Treatment Plant installation
Irrigation and waterpipe
Rain harvesting
Drainage projects
Outdoor electrical works
Ditch clearance and field drainage



Contact us for friendly advice
www.theseptic-tank-store.co.uk

T: 01295 236101 E: sales@theseptic-tank-store.co.uk



SIBFORDS WALKING GROUP

Sibford Strollers

Thursdays 23 April, 7 May, 21 May, 4 June, departure from VH at 10 sharp, therefore be there by latest 9.55. I won't announce destination in advance but choose according to mud factor. They might be on foot from VH or a short drive to start/finish point. Any queries to me on 07711 131399 or sebannister@gmail.com welcome. Future dates will be added.

Sibford Striders

Sibford Striders walks (c. 2 hour walk) will take place on Wednesday 13 May and Wednesday 27 May, departing village hall at 09.30. We aim to return to the village hall by 12 noon. Any queries to: christophersteane@gmail.com mob 07703 719749

FOOTPATHS

Our footpath warden is.....**Allan Smith , Arundel House, Backside Lane 07447 423043**. Any problems or complaints, then please contact Allan.



FRIENDSHIP CLUB

The Annual General Meeting of the Friendship Club is on **May 5**. Also on that day the Annual Subscription are due. This year it will be £12. On June 2 the Club hope to out for an afternoon tea . Club members to meet at 1-15 in the Village Hall car park. Anyone wishing to join the club. You are welcome to come and see at the AGM 2 pm in the small village hall.

Evey Boughton

D&D Enterprises



DAVE & DAUGHTERS
PAINTING & DECORATING

TEL: 07734 679 251

@: DAVE@DANDDENTERPRISES.CO.UK

W: WWW.DANDDENTERPRISES.CO.UK



For all your local Painting & Decorating Services



Internal & External



Domestic & Commercial



Fully Insured



Free, No Obligation Quote

www.danddenterprises.co.uk



Generations of Care

R.Locke & Son

Independent Family Funeral Directors – Est 1853



Offices at Brailes, Shipston,
Kineton and Wellesbourne

01608 685 274

For more information about our services,
to view our funeral announcements
and online donations, please visit

www.rlockeandson.co.uk

As a family owned business serving our
local area, we take great pride in offering
a dedicated and compassionate service.

GOLDEN CHARTER
FUNERAL PLANS





SIBFORDS HISTORY SOCIETY

Many thanks to Dr Stephen Wass and the Adderbury Morris Men, who brought so much pleasure and fun to our Social Evening on 19th March. Stephen's talk was interesting and informative, the demonstrations both of the musical instruments, and then of the dancing, were all expertly done, with quite a few of us really enjoying joining in. We are so grateful to them. This was followed by a delicious meal, and all in all it was a very merry evening!

Looking ahead to our coach trip to Bournemouth on July 7th, we are hoping to fill a 32-seater bus from Cheney Travel, which will leave the Village Hall at 8am and arrive in Bournemouth at 11 am. We will have a guided tour of the Russell-Cotes Museum and Gallery, a unique Victorian survival, situated on the East Cliff with a fabulous view of Bournemouth Bay, and full of treasures from all over the world, collected by the owners on their many travels.

Visitors do not necessarily need to visit the Museum, and may wish to spend the hours on the beach and in the town. We will leave at 4.30pm.

Prices are currently £26.50 for the coach, and £7.50 per person for the guided tour, group rate.

Do please let us know if you are interested in coming by the end of May.

Our next talk will be on 21st May when Stephen Barker will be speaking about 'Indians at Oxford'. The first Indian students to attend the University of Oxford arrived in 1871. The presentation examines the close relationship between Britain and the Subcontinent, aiming to explain briefly the background in Indian politics, the views of the families and students themselves.

Stephen will focus in particular on the stories of four students who attended Oxford before the First World War: the first woman to study law at the university, a Sikh princess, a nationalist revolutionary and a Bengali poet.

As usual, doors open 7.15pm and the talk starts at 7.30pm. Guests £5.

Diana Hughes

DID YOU KNOW?

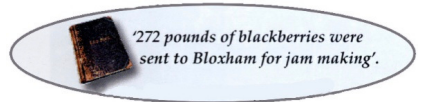
Education in the Sibfords -Our Village School - Part 3, 1900 to 1935

In 1900 the total population of Sibford Gower and Burdrop was 394, and the Ferris was 255 and the two parishes provided all the 100 children at this time. The majority



of children walked to the village school but there were rarely more than 75% in school at any given time. Attendance was greatly affected by a number of factors. Ill health resulted in a lot of absence with whooping cough being the most frequently noted infectious disease. Poor clothing and inadequate footwear often meant that children could

not attend in bad weather. In a predominantly agricultural community, school was of secondary importance to the planting and harvesting of crops. There are many mentions, in the Log Books, of children being absent for blackberrying, potato picking, allotment work, haymaking, reaping and even dandelion picking.



The children were divided into three classes: the Infants, the Lower Division which consisted of standards 1, 2, and 3 and the Upper Division which comprised Standards 4, 5, and 6. The syllabus for the infants in 1900, in addition to reading, writing and arithmetic included recitation, singing, physical exercise, needlework, knitting and handwork while the older children added to these, drawing, musical drill, geography, history and object lessons on scientific subject. All in all, a pretty comprehensive curriculum which gave the rural village children a good educational grounding.

The age of the child did not affect which class they were in. This depended on the examinations of the various Standards. The more able children, once they reached the level required in Standard 6, could remain in the same class until the end of their time in school. The older children were sometimes called upon to help with the younger ones alleviating the pressure on the teaching staff. There was little or no communication between the home and the school and the schoolmaster enjoyed a considerably higher status in the community.

DID YOU KNOW?

Cont'd

The Hadow report in 1926 recommended the separation of primary and secondary schooling with the change at 11 years of age up until the leaving age of 14. This was not fully implemented until the Education Act of 1944. The first Scholarship Intelligence Test was introduced in 1928. Sibford's first success was in 1931. If you were successful at the age of eleven and won a Scholarship to go to Banbury Grammar School you would have had a long and difficult journey. You would walk or cycle the three and a half miles to Hook Norton railway station, catch a train via Bloxham, Adderbury and Kings Sutton, finally arriving at Banbury station. You then had a mile and a half walk from the station to the school. And then you did the same in reverse to get home. How many eleven-year-olds would be allowed to do that today! Maureen Hicks



FILM NIGHT

This month's film is on Wednesday May 27th and is "Hamnet"

William Shakespeare and his wife, Agnes, celebrate the birth of their son, Hamnet.

However, when tragedy strikes and Hamnet dies at a young age, it inspires Shakespeare to write his timeless masterpiece "Hamlet".

Based on the 2020 novel by Maggie O'Farrell.

With Jessie Buckley, who won the Oscar for best actress for her role as Agnes. And Paul Mescal.

Rotten tomatoes reviews 87%

Doors open at 7. Film starts at 7.30.

Tea and coffee available or bring your own bottle.

Admission £5

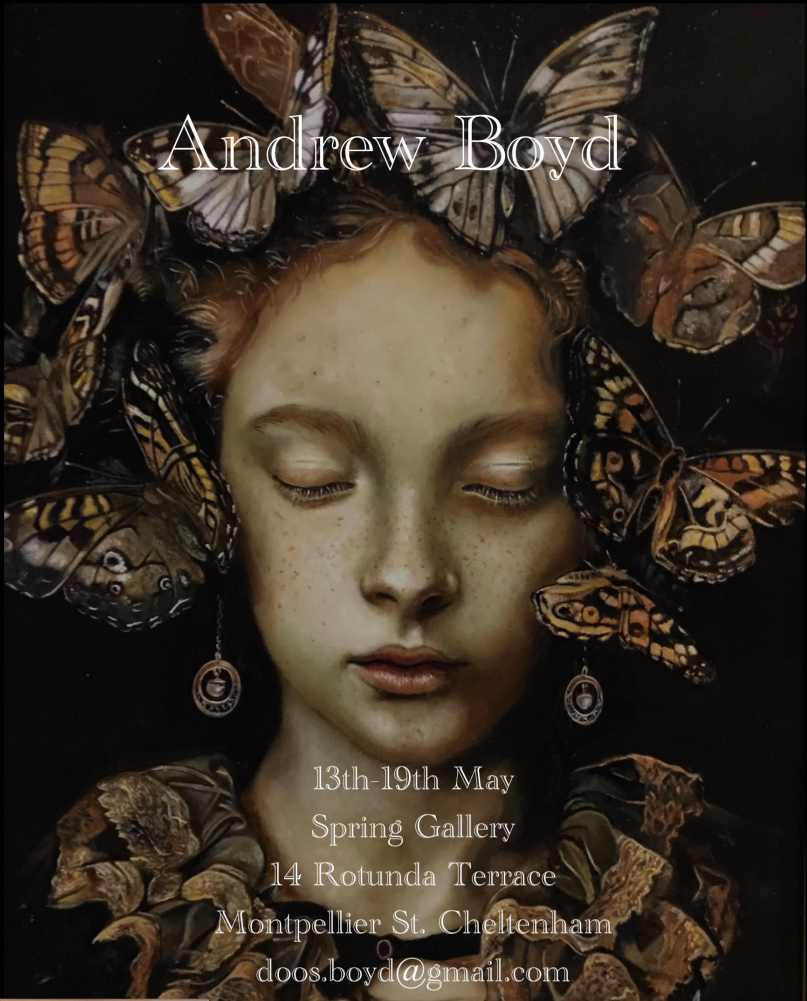
FUN CORNER

"What do you call a lion with no eyes?"

"A lon"

What a terrible joke! Ed

Andrew Boyd



13th-19th May
Spring Gallery
14 Rotunda Terrace
Montpellier St. Cheltenham
doos.boyd@gmail.com





NEIGHBOURHOOD WATCH

NEIGHBOURHOOD WATCH

SCAM ALERT

Most of these scams are probably reminders, but they keep coming;

1. DPD delivery scam. (They tried this on me yesterday - Judy spotted it immediately). Versions of this message are likely to warn that there has been a missed delivery which you need to rearrange or an unpaid fee will apply. The message will instruct you to reply to the text, or follow a link to give further information or card details. Some will use v. convincing copycat websites.

Do not reply to the message or follow any link. Report the message to 7726, a free reporting service run by phone operators. If you are concerned it could be genuine, visit the DPD website.

2. Car finance claims scams. Watch out for scammers taking advantage of the Financial Conduct Authority's car finance compensation scheme.

Be aware of dodgy texts, emails and websites claiming that you're owed compensation for mis-sold car finance. The aim of this scam is to trick you into sharing your personal and sensitive information.

Scam texts can be reported by forwarding them to 7726, scam emails can be forwarded to report@phishing.gov.uk and scam websites can be reported to the National Cyber Security Centre (NCSC).

3. Finally, would you believe a scam email impersonating Fortnum and Mason !

A dodgy email claiming to be from F and M telling you that you are eligible for a 'Tea Explorer Hamper' - by following a suspicious link. Don't be tempted, report as above.

Many thanks to Which? For all this info.

Peter Hine Gower and Burdrop Watch Co-ord. Tel:788830



**Atlas
Pest and Wildlife
Control**

Locally based
For all your pest problems inc.
rodents, insects etc.

Call Phil
07768 111491
01295 367066
Never beaten on price or
professionalism



**Registration
Services**



 Oil Boiler Servicing

 Oil Aga Servicing

 New Oil Boiler Installations

Hook Norton 01608 738156

Emergency Breakdowns: 07973 128987



SIBFORD PHOTOGRAPHY CLUB

Our March meeting unfortunately had to be cancelled, so the resumption of the black and white photography tutorial was delayed until our April meeting. We also reviewed our members' black and white photographs, together with colour versions of the same image where available. The subject matter for these images was diverse and in most cases, members felt that conversion to black and white was appropriate and had improved the images, with particular benefits in representation of texture and minimising distractions from the subject in some images.

Our next meeting will be on Tuesday, 26th May when we will view a video presentation about the uses of artificial intelligence (AI) in photography. This is a subject that all photographers should be aware of as it affects so many aspects of photography in positive or negative ways. Our photo topic for May is "People at Work".

We would like to welcome more members to the club, so if you are interested in joining, please contact Colin Lamb at colinlamb.cl@gmail.com or phone 01295 780357. We generally meet on the last Tuesday of each month at 7:00 pm in the small hall at the Village Hall.



Promenade - Martin Layer



Flamenco - Stuart Ralph

CALENDAR OF EVENTS

MAY

- 1st - Mens' Breakfast Club - The George, Brailes - 9.30am
5th - Friendship Club - Village Hall 2pm
6th - Ladies Coffee Club - Wykham Arms 11am
9th - Plant Sale - Carter's Yard - 10am
15th - Horti Meeting - Village Hall 7.30pm
16th - Horti Spring Show - Village Hall 2.30pm
18th - SGPC Meeting - Village Hall 7pm
20th - PET 1st Aid Course - Village Hall 5pm
21st - Sibford History Society "Indians at Victorian Oxford" - Village Hall 7pm
23rd - Book Swap Cafe - Village Hall 10am - 12pm
26th - Sibford Photography Club "People at Work" - Village Hall 7pm
27th - Film Night "Hamnett" - Village Hall 7.30pm

BIN COLLECTIONS

Green Tuesday: 5th; 19th
Blue/Brown Tuesday: 12th; 26th

Unwanted clothing and shoes may be recycled anytime at the Textiles/
Recycling Bank at Sibford School Swimming Pool. Bottle banks at Sibford Ferris:
Elm crossroads and Sibford Gower: Wykham Arms car park.

75

SIBFORD BUS SERVICE

Sibford Ferris - Banbury

M-F: 6.19, 8.37, 11.07, 13.32, 17.34. Sat: 6.56, 8.35, 11.09, 13.32, 17.22

Banbury - Sibford Ferris

M-F: 6.50 (Term time), 7.05 (Hols), 11.40; 14.30; 18.00

Sat: 11.40, 14.30, 17.40

Sibford Ferris - Stratford

M-F: 7.13 (Term time), 7.28 (Hols), 12.03, 14.53, 18.23.

Sat: 12.03, 14.53, 18.03

Stratford - Sibford Ferris

M-F: 5.40, 7.30, (Term Time), 7.35 (Hols), 10.30, 12.50, 16.25. Sat: 6.17, 7.57, 10.30, 12.50, 16.40

**No service on Sundays or
Bank Holidays**

Your Local Locksmith.

07743143742



Annalisa Sederholm

yoga

massage

an invitation to create space for stillness, energy & peace

07928098018
info@organic-living.co.uk
www.organic-living.co.uk



FHT
COMPLEMENTARY • BEAUTY • SPORTS



YOGA

SIBFORD VILLAGE HALL

FLOW YOGA

WEDNESDAYS 9-10AM

CHAIR YOGA

MONDAYS 10-11

WEDNESDAYS 10.15-11.15



YIN YOGA

EVERY 2 WEEKS

ANY ENQUIRIES TO:

JULIETTE53@BTINTERNET.COM

07703 836856

LOCAL LOGS DELIVERED

Two Yrs barn dried
8" and 12" available

Also available bagged
kindling.

07816 379 836

Celebrating 70 Years

1952-2022

The Forge Garage (Brailes) Ltd

Your local, family-run garage.

MOT's, Servicing, Air Conditioning, Diagnostics and In-Depth Repair Work

Pump attended fuel station also selling Calor gas, kindling, coal, BBQ coal
We're here to help so please contact us today on 01608 685247 if you have any questions
about your vehicle, or for a free no-obligation quote.



<https://www.theforgegarage.co.uk/>
Telephone: 01608 685247;
Email: enquiries@theforgegarage.co.uk

