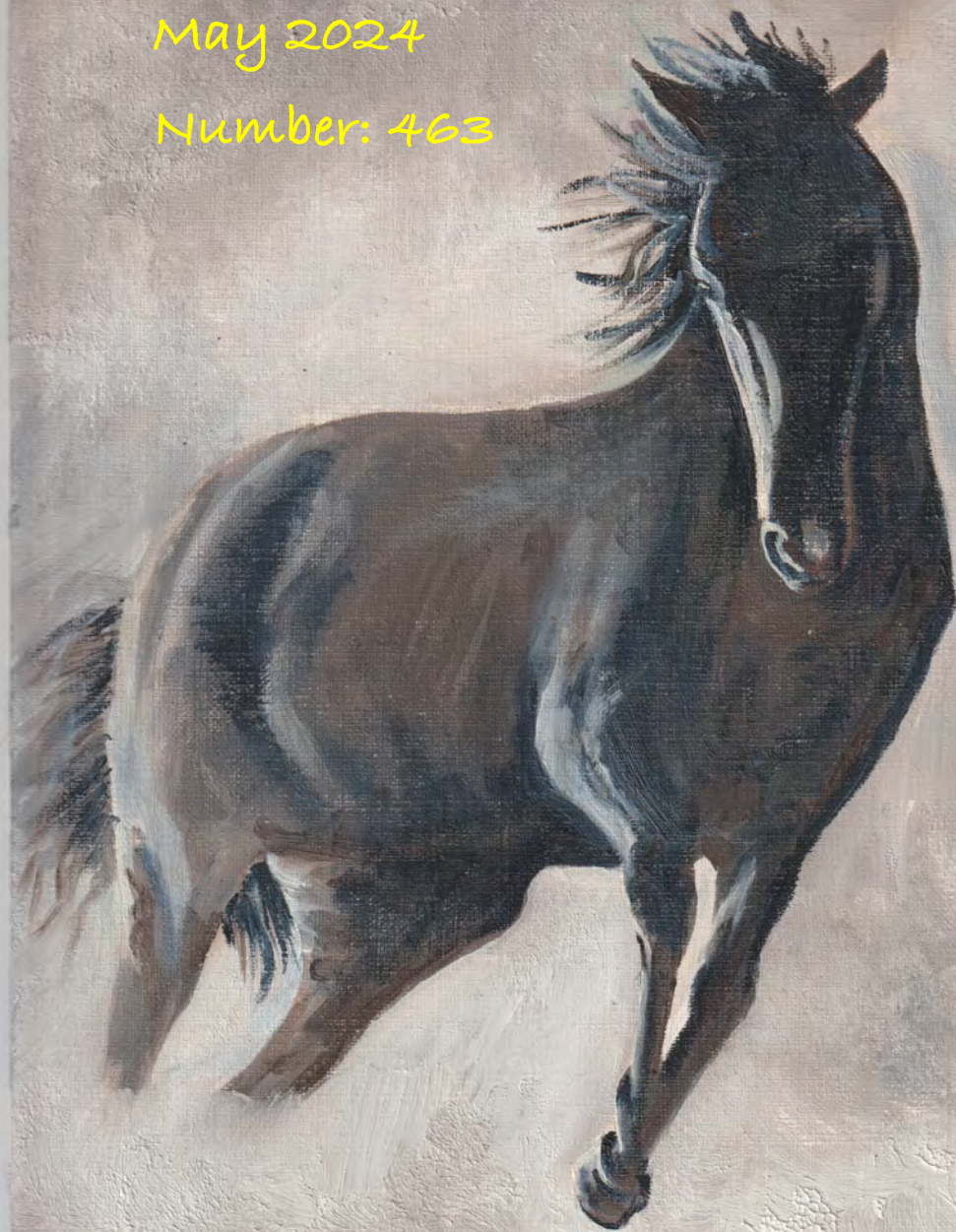


Sibford Scene

May 2024

Number: 463



VMB



Local artist Ginny Bennett will be taking part in the Artweeks Festival 2024 , exhibiting many of her paintings.

SIBFORD VILLAGE HALL is Venue 41 on the art trail and Ginny will be open to visitors MAY 3rd ,4th and 5th, from 11am until 5pm. There is disabled access and parking and refreshments will be available.

More information can be found about all exhibitors and venues on the ARTWEEKS website.



@ HOOK NORTON SPORTS & SOCIAL CLUB

## YOGA

STRETCH & FLOW CLASS - TUESDAYS 6-7PM

## MASSAGE

RELAXING AROMATHERAPY MASSAGE [1hr]

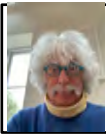
DEEP TISSUE SPORTS MASSAGE [30mins]

[available by appointment]

To make a booking or find out more:

07928098018

[annalisasederholm@gmail.com](mailto:annalisasederholm@gmail.com)



## ED'S THOUGHTS

Hello!!!

After 7 years of leading the Sibford Walking Group, Sue Bannister has hung up her boots! On behalf of all the people who have enjoyed getting out to our beautiful countryside - a big thankyou!!

And we have a new Footpath Warden - Allan Smith (see page 13)

It's Artweeks Month! There are 3 exhibitions this year at the Village Hall, Shrubbery Cottage and Swalcliffe Village Hall

We have 2 films this month - "One Night" and "Goldeneye" (see page 10)

And not forgetting the Horti Spring Show on the 18th

### Thought for the month

"I went looking for Warren

Zevon's Los Angeles

I got turned around on Gower  
Avenue"

Benjamin John Nichols

Cover picture:

Painting by Ginny Bennett. See her exhibition at the Village Hall

## The Scene Team

Editor: Tony Skowronski (780490)

E: [sibfordscene@gmail.com](mailto:sibfordscene@gmail.com)

Advertising Mgr & Treasurer: Oonagh O'Neill (788160)

E: [Advertsibfordscene@gmail.com](mailto:Advertsibfordscene@gmail.com)

Distribution: Fiona Pidgeon

Distributors: Mollie Mulley, Chris Fieldhouse, Mike Spring, Alison Rippon, Peter Hardman, Sue Lovatt, Petra Berry, Jean Scouse, Aniela Duggins, Ivor Hopkyns, Clive Warner, Briony Franklin, Selina Chard, Maureen Hicks, Adrian Lamb, Megan Gilkes, Sarah Gale, Sue Etherington-Smith, Alice Pennell, Nicki Kitchen.

## Advertising Rates

The Prices for 1 year (10 issues) are:

Full page 125mm x 185mm £ 110

1/2 page 125mm x 90mm £ 65

1/4 page 60mm x 90mm £35

Price for colour or a single issue on application to Oonagh O'Neill

You can pay for ads directly into our account:

Sort Code: 60 01 35      Acct    52612236

## Deadline for June Issue

12 NOON - 18th MAY 2024

# WELCOME TO SIBFORD

If you are new to the Sibfords and would like any advice on our village, please call Ivor Hopkyns on T: 788367 (Gower & Burdrop) or Nic Durrant T: 07972 26333 (Ferris). We are also lucky enough to have a really great village website at: [thesibfords.uk](http://thesibfords.uk)



## LETTERS AND NOTICES

### VILLAGE HALL LOTTERY

**Lottery winners for April:**

- 1st prize - Fiona Pidgeon
- 2nd prize - Roger Mallows
- 3rd prize - Ivor Hopkyns



## **In appreciation of the Warm Hub.**

Those of us who have enjoyed the opportunity to meet with others on a Thursday afternoon would like to thank Ginny and her helpers who prepared the small Village Hall, baked cakes and provided tea for those who came along to chat, play table games, learn new ones, continue with their knitting or tackle a challenging jigsaw puzzle. Further thanks are extended to the Town Estate Charity who supported this scheme during the winter months. At our last gathering we enjoyed a glass of bubbles to celebrate the fact that we had made it through the winter once again - hope to see you again next year!

## **MESSAGE FOR ALL GARDENERS**

On **Saturday 11th May**, there is a splendid Plant Sale at Carter's Yard, from 10 till 1. Entrance is through the gate next to the Wykham Arms, and everyone is welcome, and you can enjoy looking at the lovely garden Sue has made over the years. You can also visit the garden at other time by appointment at 01295 780365, [sebannister@gmail.com](mailto:sebannister@gmail.com).

## Sibford Swifts



It was delightful to see so many people interested in swifts at my Horti talk on 10th April. Several folk have since asked me about putting up nest boxes for them. By the time you read this some swifts may already have returned from Africa to breed here in nesting places that they have used before or discovered last year. But it's not too late to put up boxes or install bricks for the prospecting swifts that are looking for new nesting sites to breed in next year; young swifts will be "knocking" on boxes to check them out until at least the end of June. You'll need to play swift calls to help them find new boxes; the best times to do this are early in the morning and in the evening.

Please email me at [swifts@thesibfords.uk](mailto:swifts@thesibfords.uk) if you have any queries about boxes, calls, or indeed anything swiftian and I'll do my best to help. As in previous years, I'll be logging and illustrating the progress of my small colony on the village website at [thesibfords.uk/swifts](http://thesibfords.uk/swifts), where you will also find links to other sources of swift information.

Tim Huckvale

**PC Problems**

a+ qualified PC Technician  
repairs - upgrades - advice

---

Contact Dan on:

01295 788766  
or preferably  
email: [dcpcdex@gmail.com](mailto:dcpcdex@gmail.com)

## MISS "T" CATERING.

**Good Home Cooked Food**  
Catering for events such as:  
Anniversaries, Weddings,  
Christenings, Birthday parties,  
Funerals & private dinner parties.



Also available  
Cutlery and Crockery Hire.  
Contact Victoria Taylor on:  
Mob: 07841 910037  
Home: 01295 780206



BESPOKE DESIGN SERVICE FOR  
CUSTOM MADE FURNISHINGS

**Pattern book room for you  
to browse fabric designs**  
**Curtains, blinds & cushions**  
**Loose covers & lampshade making**  
**Headboards & bedspreads**  
**Curtain poles & tracks**  
**New sofas & chairs & reupholstery**

01295 788145

ann@annwoolgrove.com | www.yarnhill.co.uk

www.annwoolgrove.com



### The Wykham Arms

We're now open inside and outside! and  
for takeaway, too

Homemade Desserts

Bespoke special occasions catered for  
including anniversaries & birthdays

Weekly Specials

Please tel **01295 788808** or email  
**info@wykhamarms.co.uk** to book or for  
more information



The Wykham Arms



@wykhamarms



## The Septic Tank Store

FAMILY RUN BUSINESS WITH OVER  
30 YEAR'S EXPERIENCE

**Sewage Treatment Plant installation**  
**Irrigation and waterpipe**  
**Rain harvesting**  
**Drainage projects**  
**Outdoor electrical works**  
**Ditch clearance and field drainage**



Contact us for friendly advice

www.theseptictankstore.co.uk

T: 01295 236101 E: sales@theseptictankstore.co.uk



## NATURE NOTES

Following on from the less usual birds reported in Sibford gardens last month Peter Abbott had two Bramblings in his garden in Sibford Gower in March.

On a walk around Swalecliffe Common on 6<sup>th</sup> April we saw our first Speckled Wood butterfly and House Martin of the year. We also found a live Roman Snail. They seem to be fairly common in that area but since 2008 have been a protected species in England and Wales.

Other newly emerged butterflies have started to appear including Orange-tips and Holly Blues.

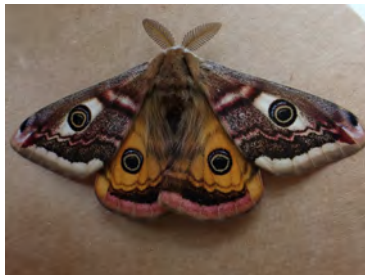
This year there seems to have been an exceptional number of caterpillars of the Scarlet Tiger moth feeding on Comfrey or Green Alkanet plants that are growing beside paths or on roadside verges. I don't know whether this is due to the mild winter. It will be interesting to see if there are more of the adult moths around later in the year.

For the second year running I managed to attract a male Emperor moth to the garden using a pheromone lure. These are possibly one of the most spectacular of the British moths and I understand that Emperor moth tattoos are currently popular!

Throughout late March and early April Greater Spotted Woodpeckers have frequently been heard drumming on trees. The noisy drumming is mainly territorial behaviour, the equivalent to singing in other birds. They are much quieter when digging into rotting wood searching for food or excavating nest holes.

Please send contributions for the next Nature Notes to [ajnewbold88@gmail.com](mailto:ajnewbold88@gmail.com).

Andy and Gill Newbold



Emperor March moth

# Oil and Watercolour classes

Learn the basics in a friendly informal class with easy to follow demonstrations

## **OIL PAINTING -**

Sibford Village Hall

(Friday's 9.30 - 12.30 weekly)

Shutford Village Hall

(Saturday's 9.30 - 12.30 monthly)

## **WATERCOLOUR -**

Sibford Village Hall

(Friday's 1.30 - 3.30 - weekly)

[nvfletcher@btinternet.com](mailto:nvfletcher@btinternet.com)

[www.nigelfletcher.co.uk](http://www.nigelfletcher.co.uk)

07792 657 248

## Stay in style in the Sibfords

Sumptuous self-catering

Newly refurbished self-catering accommodation set in stunning private gardens with heated swimming pool, tennis court and croquet lawn. 4 beds, 5 bathrooms. Sleeps 8 (plus 4 in the main house for larger groups).

Private dinners also catered for up to 16 guests.

Contact Sally Wass

T: 01295 780104

E: [sally.wass@btinternet.com](mailto:sally.wass@btinternet.com)

[www.holmbyhouse.com](http://www.holmbyhouse.com)

Holmby  
House 



*Generations of Care*

# R. Locke & Son

Independent Family Funeral Directors - Est 1853

Cauton Corner

**BRAILES**

OX15 5AZ

t: (01608) 685274

Southam Street

**KINETON**

CV35 0JN

t: (01926) 640386

No. 6 The Precinct

**WELLESBOURNE**

CV35 9NL

t: (01789) 840744



For more information about our services, to view our funeral announcements and online donations, please visit

[www.rlockeandson.co.uk](http://www.rlockeandson.co.uk)

As a family owned business serving our local area, we take great pride in offering a dedicated and compassionate service.

Golden Charter  
Funeral Plans 







## VILLAGE HALL NEWS

**Book Swap Saturdays and Cafe: May 25<sup>th</sup>, June 22<sup>nd</sup> 10am-12pm.** Books for all ages and genres at this popular event. Come and have a drink and a chat in the Small Hall. Teas and coffees available. It's free to borrow books but donations welcome.

**Help look after our Village Hall.** We need more volunteers from the village to help look after our Village Hall and gardens. A couple of hours every month would make a huge difference. We really need help with keeping the plants looking lovely and gardening is good for the soul! Contact Ginny 780373 or [ginnybennett@googlemail.com](mailto:ginnybennett@googlemail.com)

**Support the Village Hall by joining the Sibford Lottery.** We have an amazing community lottery running with fantastic cash prizes every month. Join now and next month you could be a winner! Existing members, just a reminder to renew your annual subscription before March. £48 for 12 months or £4 a month. Contact [juliette53@btinternet.com](mailto:juliette53@btinternet.com) for more info.

**Book the Village Hall for your next event using our online booking system:** When you are paying the invoice for your event, please include your name and the invoice number. We have preferential rates for village residents, only £11/hr (one hall); and £20/hr (both halls). Please use us for your next birthday party or community gathering. [www.sibfordvillagehall.org.uk](http://www.sibfordvillagehall.org.uk).

**Quick reminder on Hirers' responsibilities:** Please remember that if you hire the hall, it must be left as you would like to find it. The chairs must be stacked (use the chair trolleys) as per the photograph and advice notice on the door of the chair store, because we need to comply with our Health and Safety Policy. The dishwasher must be emptied completely and rinsed with clean water and the mesh plug must be cleaned of all food residue before replacing in the machine. Please remember that the Village Hall has a NO SMOKING policy which includes the outside space.

Charlotte Davies



## FILM NIGHTS

The film for May on Thursday 23rd is **One Life**.

Johnny Flynn, Helena Bonham-Carter and the great Anthony Hopkins lead a powerful reminder of the power of individual acts in defence of human rights, even when all seems lost.

Retiree Nicholas Winton lives with the haunting feeling that he has not made a great difference in the world. Yet, on the eve of the Second World War, Nicholas, along with the help of his firebrand mother and the generosity of the British public, embarked on an ambitious project, saving 669 children from a horrific fate.

Doors open at 7. Film starts at 7.30. Admission £3 pp. Refreshments available. Please note that the filmnight will return to the last Wednesday of the month starting in June.

Petra Berry



### THE NAME'S BOND: JAMES BOND

Understand what it's like to direct a James Bond film from the man himself

18.30, May 29th

We have organised a showing of **GoldenEye** at Village Hall - there will be free drinks!.

Ian Sharpe our wonderful village compatriot, will be there to take us through his directing of Golden Eye and of the action sequences which he organised. This promises to be a unique chance to see the film and this one has been voted by cognoscenti as the best Bond film of all time.

We will have a talk from Ian and show the film and then have a discussion afterwards.

This promises to be a memorable occasion and fun. It was the biggest grossing Bond film ever.

We look forward to seeing you there!

John Wass

# Crossword

## Cake walk

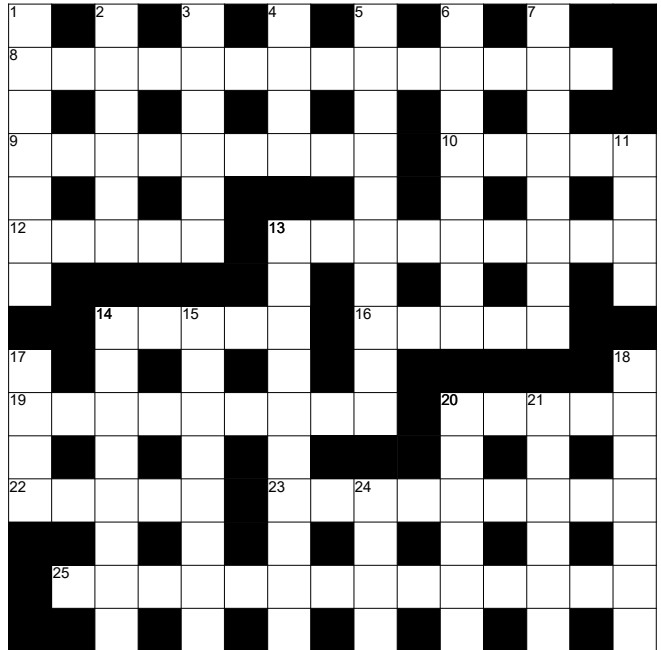
### ACROSS

8. Officially sanctioned healthy walk. (14)
9. Digital component primarily manufactured in contended Republic of China, helping island profitability. (9)
10. Symbol to understand slight. (5)
12. Move carefully to the side of mount.(5)
13. Note routes after what's said about concealed travellers. (9)
14. To irritate Kamala return the drug. (5)
16. Dhal also contains dietary requirement. (5)
19. Rancid eel upset European. (9)
20. Tacked United onto last quarter of exercise. (5)
22. Position left in-step. (5)
23. Purity is fashionable without this French northern church. (9)
25. Spoil Imperial Chinese edicts to get sent packing. (8,6)

### DOWN

1. Move fast after fraud. Salesman shows up. (7)
2. Scottish minister intones criticisms. (6)
3. Promenade is in street directory. (6)

## Declaration Game



4. To thumb a lift leaving hotel creates discomfort. (4)
5. Who spun the corgi inside to stop it breathing? Camilla? (10)
6. A step for gullible person to swallow flat move. (8)
7. To be self-confident on stilts? (4,4)
11. Curious, off-spring returns unknown. (4)
13. Clip-on cap at 70, say. (5,5)
14. During pregnancy, part on lane meandering. (8)
15. Cave seen to erupt and vanish. (8)
17. Flaccid - top comes off airship. (4)
18. Damaging to promote without IT. (7)
20. Collar dog in spot. (6)
21. Err and err again briefly after dawn confusion. (6)
24. Gin cocktail hour is soon. (4)

## FOR SALE IN BURDROP

**300-yr old thatched stone cottage with  
stunning views**

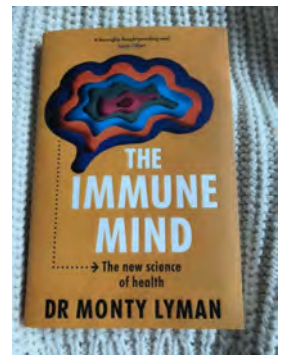
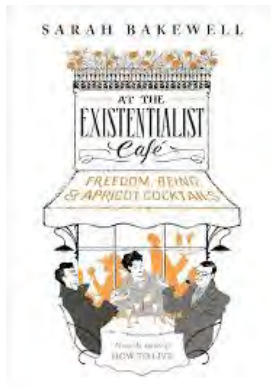
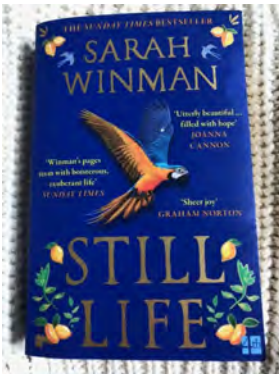
**3 bedrooms, 2 bathrooms,  
3 reception rooms**

**large gardens and garage**

**CALL: 07813 477004**



WHAT WE'RE READING.....





## SIBFORDS WALKING GROUP

### WALKING DATES

13 May (last one I will lead); 3 June; 17 June

Again there are three week gaps between the first two owing to May bank holidays.

From June, **Phil Hilton**, Gowers Close, our next door neighbour is taking over running the walking group.

We leave the village hall on foot or by car at 10 am sharp to do a circuit of approximately 2 hours. You are advised therefore, to get to the village hall by 9.55 am latest. Often a shorter version of the walk is possible but that it is advisable to check with Sue just before

Dogs are welcome provided they are put on the lead when requested. Walking boots and poles are recommended but not compulsory. Some routes include stiles. If you would prefer a shorter walk, please contact Sue to discuss as it is sometimes possible to leave a car about halfway, so the less energetic may drop off and drive home. At the village hall, please park either on the road or on the grass field beyond the tarmac.

Please don't hesitate to ring me on 01295 780365 or email [sebannister@gmail.com](mailto:sebannister@gmail.com) if you have any queries.

Sue Bannister

### FOOTPATHS

**HOORAY!** The new footpath warden is.....**Allan Smith , Arundel House, Backside Lane 07447 423043**. Any problems or complaints, then please contact Allan

## LETTERCARVE

Hand-carved, hardwood signs for the home and workplace.

Personalised boards and platters, stable plates and memorials.

#MadeInSibford

Browse the website:

[www.lettercarve.com](http://www.lettercarve.com)

e: [lettercarve@gmail.com](mailto:lettercarve@gmail.com)



Locally grown Sibfords seasonal cut flowers

Subscribe for a monthly bouquet or  
pop along to our flower stall for bunches

Florist and DIY bridal buckets also available

Contact [carolyn@familywhites.co.uk](mailto:carolyn@familywhites.co.uk)  
07711 897902

Sustainable flowers. Scented, seasonal -  
grown, not flown!

QUALITY FISH DIRECT  
FROM GRIMSBY MARKET

Proprietor: Robert Hill

[hill42804@gmail.com](mailto:hill42804@gmail.com)

07578 195979

Freshest fish and shellfish direct from  
Grimsby to Sibford. Now delivering  
directly to your home every Thursday  
from 3.45 - 4.15



### THE VILLAGE SHOP HOOK NORTON

\*National Lottery\*

Grocery - Greengrocery - Bakery - Wines

Spirits - Confectionery - Newspapers

Magazines - Cards - Bottled Gas

Open Monday to Friday

8 am to 8 pm

Saturday 8 am to 8 pm

Sunday 8 am to 6 pm

Telephone: 01608 737245

Please note: On Sunday, we open  
at 9am

### **Remember someone special**

Purchase a rose and celebrate the life of a loved one at our remembrance event, taking place this year at popular National Trust property, Upton House and Gardens from 18 to 30 June. More than 350 white roses will form part of the stunning temporary installation, with each one hand-crafted especially for Katharine House by British Ironworks in memory of someone special.

[www.khh.org.uk/rose-remember](http://www.khh.org.uk/rose-remember).

### **Open Gardens galore**

If you love spending time in the great outdoors, then don't miss out on our Open Garden events throughout the spring and summer months. We have some fabulous villages taking part, as well as some private tours and events with limited availability. You can find the full list of our Open Gardens on our website. [www.khh.org.uk/gardens](http://www.khh.org.uk/gardens)

### **Carers group returns**

We are delighted to announce that Living Well's family and carers group, which had to pause during the refurb, is returning to the hospice in early May! The relaxed drop-in sessions help people to share, socialise and reflect with their peers, while our team of specialists provide emotional, practical and financial advice. If you'd like to find out more then email: [pallcarelivingwell@ouh.nhs.uk](mailto:pallcarelivingwell@ouh.nhs.uk).

### **Easy as ABC**

Fundraising can be as easy as ABC... In fact, we have an A-Z of fundraising ideas. So if you're keen to help raise money for our hospice but not quite sure how, then take a look at some of these great suggestions!

Let us know - we love hearing about what our supporters get up to.

[www.khh.org.uk/a-z](http://www.khh.org.uk/a-z)

### **Be in it to win it**

Would you like to be in with a chance of winning up to £1,000 each week? Of course you would. Playing the Katharine House weekly lottery couldn't be simpler! For just £1 a week, you can be in with a chance of winning one of our 20 weekly cash prizes. When you join the Katharine House Hospice lottery, you'll be supporting local people living with an incurable illness, as well as their families and loved ones. Players must be 18 and over. Find out more and sign up here: [www.khh.org.uk/lottery](http://www.khh.org.uk/lottery).

# Malawi Stationery Collection

Run by **Olivia Sparks** and **Cicely Glazebrook**

Hello everybody! Cicely and I are running a stationery collection for underprivileged school children in Malawi. The students being supplied with the stationery are both primary and senior school children, and the schools are in remote areas of Malawi that do not receive any support from any charities. So Cicely and I are incredibly excited to be making a difference at these schools and your donations and support would be very much appreciated by us!



We'll be collecting all the usual day-to-day stationery, for example - pens, pencils, colouring pens and pencils, rubbers, rulers, sharpeners, calculators, felt tips, crayons, highlighters, maths sets & staplers. Cicely and I have set up collection points for your generous donations. These include The Holy Trinity Church in Sibford and St Peter's & St Paul Church in Swalcliffe which have kindly allowed us to use their porches' as a collection point. We are also collecting stationery at our houses- Hillcrest Cottage, Main Street, Sibford Gower OX15 5RW and Meadowbank, Burdorp, OX15 5RN. Each collection point will have a waterproof box in an obvious place at the collection point and will be emptied daily!

As many people may know from my last Malawi stationery collection, my inspiration to run these stationery collections mostly comes from my childhood growing up in South Africa and seeing the effect of poverty on education. Cicely spent the summer in Kenya on a volunteering expedition with Camps International. Most of this time, she spent around young school students, who are being educated in poverty-stricken areas. She was taken aback by the condition that the students were expected to learn in. After the last stationery collection being such a success, and being able to send two large boxes to Malawi I'm confident that this collection will also be able to create an impact. We received these pictures on this poster from the school after they finally received the stationery.



**Thank you!**





## DID YOU KNOW?

This month we take a look at the three North facing windows on the left of the chancel - on your left as you stand in the nave looking at the altar. Each of the stained-glass windows feature aspects of the Holy Communion. The central window depicts Jesus at a table sharing the Last Supper with his disciples in the Upper Room prior to his crucifixion. Below the image is an inscription which reads: "Take, eat, this is my body."



The window to the right depicts Moses distributing 'Manna' which God had provided to feed Moses and the Israelites while they were in exile. The text reads: "Moses gave you the manna but I am the true bread" suggesting that it is the Father who gives you the true bread from heaven". The use of the present tense suggests that it is Jesus who is the 'true bread'.



At the base of this light is a memorial inscription which reads: "To the honour of the Holy Trinity and for a memorial. 13 Years pastoral work. W S Miller." William

Sanderson Miller was vicar at Holy Trinity, Sibford from 1848-1860.

The window to the left depicts Abraham preparing to sacrifice his only son, Isaac, prefiguring the sacrifice of Jesus, God's Son, on the Cross. The text reads: "Abraham took the knife to his son." Having prepared the altar with wood to burn the offered sacrifice, Jacob laid Isaac on the altar and took his knife to slaughter his beloved son. God, seeing Abraham's willingness to obey Him and sacrifice his only son, God instructed him to sacrifice the lamb that was caught in a thicket nearby instead of Isaac. Because you have obeyed my voice God said "your offspring shall all the nations of the earth be blessed". Thus, Abraham became The Father of the Jewish nation.



At the base of the light is a memorial inscription which reads; "To the memory of Rev Richard Eliot. A student of Christ Church Oxford, died 14 May 1862. It is thought that Richard Eliot was the younger brother of Rev Edward Eliot who was the incumbent at Holy Trinity, Sibford from 1860-1864. Edward also studied at Oxford and was a student at New College. Richard died while Edward was vicar at Sibford.

*Maureen Hicks*



# HORTI SOCIETY

A packed audience attended Tim Huckvale's fascinating talk on 10th April on The Swifts of Sibford. It was both educational and enchanting. The perfect combination in a lecture!

We learned how to tell when a swift is actually a house martin, and that they don't perch but do pretty much everything on the wing, except for laying eggs and raising chicks and they can attain speeds of up to 70mph. Their migration patterns tell us that they travel thousands of miles from UK to East Africa but they come back to their original nests, and this is where the problem lies. They nest in the crannies of old buildings. New buildings have no such nesting sites and when the old habitats are pulled down, they can't find suitable new nests and their numbers are now in serious decline making them on the endangered Red List. Anyone who was not able to attend the talk and wants to put up swift boxes could contact Tim for advice: [swifts@thesibfords.uk](mailto:swifts@thesibfords.uk). He has had an increasing number of swifts nesting at his house over the 7 years that he has installed swift boxes. But here are some pointers. Incorporate a nest cup into the box, site the box high up, at least 4.5m above the ground ideally on a north facing aspect to keep the box cool, there should be no obstructions (eg trees) near the box nor should it be close to a busy road. Transmit swift calls recordings to make them interested in your box - and put up several. They are gregarious.

A reminder! Andy Newbold is setting moth traps at The Long House, Sibford Ferris, OX15 5RG in June. Come and see what he has managed to catch at **8.00am on Saturday 8 June**. (I know, but he wants to release them promptly after he has caught them the night before) This is a family event, everyone welcome. Andy will not only identify the moths but will tell us which plants they love so that we can attract them to our gardens.

And also.... on **Wednesday 10 June** the horti is planning to visit West View House and Priors Marston Manor, leaving the Village hall, Sibford, at 2.00pm. We will hope to share cars as it is approximately an hour's drive to the 2 venues. Tea and refreshments will be provided at The Manor . Diana Thompson



## In Your Garden - May

March was a tough month. The storms battered all the blossoms off my magnolia tree, and the tulips were flattened. We may yet get some hard frosts, so do not be in a rush to plant out any vulnerable plants yet. May is one of the busiest months for gardeners, so brace yourselves whilst I try and remember all the jobs to do.

1. **Veggies.** French and runner beans can be planted now, also lettuces, radishes and salad leaves, like rocket. If you have already planted your carrots and spinach last month, they may need to be thinned out a bit by now. Inside the greenhouse you can plant courgettes, tomatoes and cucumbers. Leave sweetcorn for a few more weeks. It hates getting cold, wet, feet. (so do I.)
2. **Bugs.** Keep a watch out for whitefly, red spidermite, thrips, slugs and blackfly. Spray regularly and also examine the lilies for their bright red lily beetles.
3. **Shrubs.** Hedges should be trimmed, but only if the birds are not nesting in them. Spring flowering shrubs like forsythia, choisya, ribes, etc need trimming back when they have finished flowering. If you have variegated shrubs, cut out any shoots that are turning green, as they are reverting their colour.
4. **Climbers and tall plants.** Honeysuckles and clematis grow very fast, and will need tying into their supports. Rambling and climbing roses will too. Tall perennials are shooting up fast, and must have plenty of wooden supports, or metal hoops to keep them upright - delphiniums and phlox particularly.
5. **Dahlia's.** If you have kept them inside and wrapped up warmly all winter, you can wake them up and plant them in pots with plenty of room. Water gently, but not too much. They must not lie in soggy compost, and they must remain in a frost proof place for a few weeks. They come alive in two or three weeks, and plant them out later.
6. **Lawns** suffered with being sodden all winter in the ferocious rain storms, so loads of moss has grown. You can try aerating or raking out the moss, and using moss killer. They will probably need a lot of TLC for a while. Trimming the edges always makes the lawn look better



## In Your Garden - May

Cont'd

7. **Annuals.** As the soil warms up start sowing your seeds outside - cornflowers, marigolds, poppies, cosmos and nasturtiums are some of my favourites. They like a sunny place, and will get rather too tall if you don't remember to pinch some of them out. If you planted your sweet peas in the greenhouse, you can harden them off out on the patio during the day, and then plant them up to whizz up the fences and supports. Don't forget to tie them in, in the direction you want them to take.

8. **Half-hardy annuals.** These are all flooding into the plant centres, and you can now buy lovely trailing plants and colourful beauties for your pots and hanging baskets. I always chose to go to Phillip Gilbert's at Quarry Nurseries. He opens up again on the 30th April. Might see you there!

That's enough. Hope I haven't given you too much to do. Do not work too hard - gardens are there to enjoy, and relax in. Get the comfy chairs out and the big long cushions. Put your feet up. What about a pot of tea and some lemon drizzle cake?  
Jupe Hitchings

### **PILATES IN SIBFORD**

***On-line classes and private tuition available***

**Madeleine Wilson M.Sc, Mat & Studio Master Teacher Offers**

Bespoke One to One and Duet sessions

Training on Specialised Pilates Equipment

Reformers, Chairs, Barrels & Cadillac

Small Group Matwork Classes

For all Levels from Beginners to Advanced

**Tel: 01295 78027**

**Mob: 07905 953300**

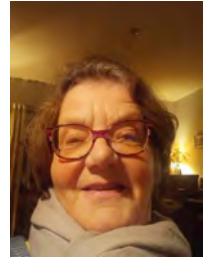
**email:madeleine@pilatesinsibford.co.uk**

**www.pilatesinsibford.co.uk**



# VILLAGE PEOPLE

**This month, we have Petra Berry.....**



## **Why Sibford?**

We lived in Stonesfield when we needed to look for a larger home. As we came closer to Sibford we just loved the unspoilt countryside and when we entered Barley Close we immediately felt at home and knew it would be a great place to bring up our young family.

## **Earliest memory of Sibford**

We moved in December 1984 and within weeks we were snowed in for 3 days without electricity and very little oil! Snowdrifts were 2 meters high! The virgin snow on Ditchedge was just beautiful. Something we probably won't see again.

## **Surprising things about yourself.**

I started a bookgroup in the village with a friend, over 30 years ago. We were featured in Woman's Weekly soon after on how to set up a book club! We are still going strong.

## **Best thing about Sibford and what would you like to change.**

No streetlights. Which gives us amazing starry skies on dark, clear nights. Change? Maybe council tax on 2nd homes should be doubled.

## **What do you do.**

I am retired after having worked in the NHS for many years. I now work as a volunteer in Hook Norton library and I also deliver library books to housebound people. This service was set up when the mobile library vans stopped coming.

## **Hobbies**

I love gardening. I do lots of reading (I belong to 2 bookgroups). Watching good films and plays. I also knit the occasional jumper and scarf. I do Pilates and walk the dog to keep fit.

## **What really gets you going.**

The inequality in this country. And politicians that still think Brexit is a success. Alternatively a cup of green tea in the morning and then a long walk with Roscoe.

# Yoga

**Tuesdays:** Beginner's Yoga - 9-10am  
Deddington Windmill Centre

**Thursdays** - All levels Yoga Flow.

9 - 10am

Gentle Yoga with a Chair - 10.15 - 11.15

Sibford Village Hall

**Fridays:** Hatha Flow Yoga - 9 - 10am

Deddington Windmill Centre

Any enquiries to  
[juliette53@btinternet.com](mailto:juliette53@btinternet.com)

OPUS

**OPUS  
Property  
Services Ltd**

**01295 780652  
07816592124**

All aspects of property maintenance and refurbishment undertaken from replacement light bulbs and tap washers to new ceilings and floors.

Plumbing, tiling, wood flooring, floor renovation, under floor heating, plastering, electrics, decorating, damp proofing, carpentry, locks, drains, kitchens, bathrooms etc

**Call us or visit our website for  
more information:  
[www.opusps.co.uk](http://www.opusps.co.uk)**

SIBFORD STORES & POST OFFICE, SIBFORD FERRIS. OX15 5RG

Tel: 01295 788317/788348

YOUR LOCAL CONVENIENCE STORE AND NEWSAGENT

We deliver newspapers and magazines, 7 days a week to all the surrounding area. Place your regular order today, whether for 1 day a week or 7. Always a wide selection of magazines, specialist titles to order.

Chilled & frozen foods, groceries, cigarettes, beers, wines and spirits, fresh fruit and vegetables, pet food, household goods, toiletries, medical requisites and lots, lots more...

Health Lottery, photocopying, fax service, dry cleaning

We will also undertake your mailings for you - just ask

Always an excellent selection of Hook Norton bottled beers in stock

Telephone your grocery order for free local delivery

OPENING HOURS

Monday - Saturday 8 am - 6.00 pm

Sunday 8am - 1.00 pm

PLEASE SUPPORT YOUR LOCAL POST OFFICE - THERE ARE LOTS OF PRODUCTS & SERVICES  
AVAILABLE ON YOUR DOORSTEP



## FRIENDSHIP CLUB

The Club's AGM will be on the 7th May. I hope all members will attend

Anyone wishing to join us - please come along to the AGM. You will be very welcome

Evey Boughton



**Thursday 6<sup>th</sup> June**

**80th Anniversary D-Day Celebrations in the Sibfords**

With the support of both our Parish Councils, plans are in place to celebrate this historic occasion along with the rest of the country. We shall join in the National Beacon Lighting at 21.30hrs with the lighting of our own Beacon in the village hall field. Again, we hope to be able to see other local Beacons.

This will follow a free showing of a special BBC D-Day documentary made to celebrate the 60th anniversary and unlike most Hollywood blockbusters, concentrates of the British aspect of the invasion.

Although this is not a national holiday, we hope to announce further details in the following weeks and look forward to the support from our community.

Keith Hicks



## FUN CORNER

"What do you call a rifle with three barrels?

A Trifle"

"Did you hear about the karate expert who joined the Army?

The first time he saluted, he killed himself"



## CHIMNEY SWEEP

**Jonathan Perry**

*Guild of Master Chimney  
Sweeps Qualified*

**Open fires, Inglenooks,  
Wood burners, Agas**

*All work certificated for  
house insurance purposes*

For a clean, friendly and professional  
service please contact me on:

Tel: 07557 058051 (Swalcliffe)

Email: [jperrychimneysweep@gmail.com](mailto:jperrychimneysweep@gmail.com)

### **Holiday Cottage in Cornwall**

On the beautiful north coast in Poldark country, character cottage set in a large south-facing enclosed garden, is available for holiday lets. It is situated on the outskirts of the vibrant and friendly village of St Agnes.

**Scrumbles Hollow** sleeps six in three double bedrooms, one with ensuite shower room, plus a family bathroom. Full central heating.

The spacious cottage has an open fire place in a cosy sitting room, while the dining room boasts a log burner. New, fully equipped kitchen and separate utility room for sorting out sportswear after a day on the beach or walking the breathtaking countryside.

Lots of good local pubs and restaurants, shops and galleries. Excellent public transport connections, including Newquay airport (half an hour by car).

For more information, please contact Linda on 01295 780 242 or 07973 226 032 or [lindaneyolo@gmail.com](mailto:lindaneyolo@gmail.com).



## LOCAL NEWS



*present*

### **A Summer Concert**

**15<sup>th</sup> June 2024, 7pm**

**Swalcliffe Church**

**Bar, doors open 6 pm**

This summer's concert features a programme of familiar pieces from film, popular and classical repertoire

**Tickets £10, on the door**

or in advance from Gay Harris 01295 788427 or Stags Head

This year the Orchestra supports the breast cancer charity "CoppaFeel"

### **LOCAL MARKETS**

Banbury - Every Thursday & Saturday. Farmers Market  
- 1st Friday of the month

Deddington Farmers - 4th Saturday of the month

Chipping Norton - Every Wednesday. Farmers market -  
3rd Saturday of the month

Stourton Farmers - 1st Thursday of the month. 6-8pm

## RED HORSE VALE



Red Horse Vale are a long established and family run distributor of Fuels for heating and vehicles, as well as Building, Farm and Garden Supplies.

Solid Fuels • Logs and Kindling Wood  
Gas in Cylinders • Central Heating Oil  
Farm Oils • Sand and Ballast  
Postcrete • Cement • Slabs  
Fencing Materials • Garden Supplies  
Top Soil • Composts • Flower Pots  
Wood Chippings • Animal Feeds

Call us for a free quotation!

OPEN HOURS

**MONDAY - SATURDAY**

**8am to 5pm**

[www.redhorsevale.co.uk](http://www.redhorsevale.co.uk)

**01926 642 832**

Windmill Farm, Banbury Road (A422), Oxhill,  
Warwickshire, CV35 0RP

### CHURCH SERVICES

**Quakers** - Sibford Gower, Sunday, 10.30 am

**Roman Catholics** - Brailes, Saturday, 5pm; Shipston, Sunday 9am  
Kineton, Sunday 11am

**Baptists** - Hook Norton, Sunday, 10.30 am

**Methodists** - Marlborough Rd Banbury, Sunday, 10.30am  
Shipston-on-Stour, Sunday, 10.30am (All the same circuit)



## SHS Talk on 'The Light of the World'.

On March 21, following the AGM, art historian Lizzy Rowe gave us a fascinating talk on the allegorical painting in the chapel at Keble College: 'I am the Light of the World' by William Holman Hunt (1827 -1910). Lizzy started with a short history of Keble College, which was founded in 1870 by John Keble, poet and priest, initiator of the Oxford Movement and admirer of the Pre-Raphaelite Brotherhood. The sacred painting took Holman Hunt four years to complete, (1849-53), was bought by Thomas and Martha Combe of the Oxford University Press, and given to Keble College on Thomas' death. It can be found in a side chapel constructed to accommodate it.

Those who visited the Pre-Raphaelite exhibition at the Ashmolean in 2022 will remember the many sketches of the lantern which the figure of Christ is holding, 'The Light of the World', as he knocks at the door: just one example of the perfectionism of the artist.

A later version of this powerful painting, which Holman Hunt completed in 1904, went on a world tour before coming to rest at St Paul's Cathedral.

Many of us were so intrigued by the topic that Lizzy has offered to take us to the Pre-Raphaelites Room at the Ashmolean, and then on to Keble College to see the painting in situ.

We plan to go one day this summer. Let us know if you are interested.

In contrast to this we will be welcoming back Bill King, who gave us such an entertaining talk on Glenn Miller last year. His topic: 'Dad's Underground Army: the Auxiliary Units of the British Resistance Organisation'.

May 16 at Sibford Village Hall. Doors open 7.15pm and the talk starts at 7.30pm. £5 for non-members. Light refreshments follow the talk.

Diana Hughes

**Do you need a helping hand to find the mortgage, pension or investment that's right for you?**



For Independent financial advice please get in touch



**SCR Financial**

Call Sue for a free telephone consultation

**01295788475**

[sue@scrfinancial.co.uk](mailto:sue@scrfinancial.co.uk)

[www.scrfinancial.co.uk](http://www.scrfinancial.co.uk)

Authorised and regulated by the Financial Conduct Authority FCA# 959557



**Registration  
Services**



 Oil Boiler Servicing

 Oil Aga Servicing

 New Oil Boiler Installations

***Hook Norton 01608 738156***

***Emergency Breakdowns: 07973 128987***



# GREAT TASTE

## Italian Lemon Cake

### Ingredients

250g butter (softened) plus extra for the tin  
250g caster sugar  
3 eggs  
100g polenta  
250g ground almonds  
1 tsp baking powder  
3 Amalfi lemons or large lemons zested, 1 juiced (see below)  
[crème fraîche](#), to serve



### Syrup

1 Amalfi lemons or large lemons  
3 tbsp caster sugar

### Method

1. Heat the oven to 160C/fan 140C/gas 3. Butter and line the base of a 23cm [springform cake tin](#). Use electric beaters to whip the butter and sugar until light and fluffy.
2. Add the eggs one by one, beating between each. Fold in the polenta, ground almonds and baking powder, then stir in the lemon zest and juice. Spoon into the tin and smooth the surface.
3. Bake for about 50 minutes-1 hour until the cake is risen and golden (cover the top loosely with foil after 30 minutes to stop it browning too much). Cool in the tin.
- 4 For the syrup, pare thin strips of peel from the final lemon, trim any pith and cut the peel into thin matchsticks (or use a zester).
5. Juice the lemon and put in a small pan with the sugar and 3 tbsp water. Heat gently until the sugar dissolves then simmer for a minute. Add the sliced peel and leave to cool.
6. Put the cake on a plate, drizzle over the lemon syrup and zest and leave to soak in. Serve with [crème fraîche](#), if you like.

07734 679 251

dave@danddenterprises.co.uk



Dave & Daughters Enterprises  
For all your local Painting & Decorating Services



Internal  
External  
Fully Insured  
DBS Checked  
Free, No Obligation Quote

www.danddenterprises.co.uk

### **Tinhay - St Ives Holiday Cottage**

Our lovely St Ives 3 bedroom cottage is available - with stunning sea views, private garden and use of a parking space.

Whilst being a stone's throw from Porthmeor Beach it is a short walk to gorgeous Porthgidden and Porthminster beaches as well as all the many shops and restaurants that St Ives has to offer.

<https://orangerooft.co.uk/properties/areas/st-ives/tinhay/> - please use this link to check out our photos and availability, and contact Brian & Carolyn direct at [tinhaystives@gmail.com](mailto:tinhaystives@gmail.com) with any questions.



## SIBFORD PHOTOGRAPHY CLUB

At the time of writing, I am hopeful that at our meeting on 30th April, the weather will have permitted us to enjoy our first outdoor photoshoot of the year. The idea of the photoshoot was to make images of the architecture around the villages; whole buildings, details or features were all suitable subjects. Following the shoot, we returned to the Village Hall to view the members' images on the monthly topic of "Rocks and Stones".

Our next meeting is on 28th May, when we will review the photos from our April session and our images on the monthly topic of "Decay".

Sibford Photography Club is a friendly, informal group with a shared interest in photography. Activities include instructive presentations and regular photo topics with the resulting images presented and discussed at meetings (face to face or virtual). In addition to our regular meetings, we also arrange outdoor photoshoots at local stately homes, gardens, nature reserves and other places of interest.

We would like to welcome more members to the club, so if you are interested in joining, please contact Colin Lamb at [colinlamb.cl@gmail.com](mailto:colinlamb.cl@gmail.com) or phone 01295 780357. We generally meet on the last Tuesday of each month at 7:30 pm in the small hall at the Village Hall.

Colin Lamb



Punakaiki Pancake Rocks



Embedded Moeraki boulder

- Bespoke bathrooms, kitchens and carpentry
- Fitted furniture
- Plumbing and electrical works
- Home improvements and renovations

# Hugo Seely

*Trading in the Sibfords since 1992*

From concept to completion  
*Exceptional value,  
 exceptional service*

T: 01295 780355  
 or 07773 319239  
 E: [hugo.seely@gmail.com](mailto:hugo.seely@gmail.com)

*Excellent references*



## Original Wooden Platters & Boards

Crafted by hand at Temple Mill in the Sibfords

Trunks and branches from fallen trees planked, seasoned, designed at Temple Mill. Unique, often quirky, always useful boards for:

- ~ Presentation – Food Theatre! ~ Cake Boards ~ Cheese Boards ~
- ~ Chopping Boards ~ Serving Platters ~ Etc ~

**\*\* 5<sup>th</sup> Wedding Anniversary: 'Wood' \*\***

Between Sibford Ferris and Sibford Gower. Welcome to view.

07580 597042 - [jonquilsabin@hotmail.co.uk](mailto:jonquilsabin@hotmail.co.uk) – 01295 780418

[www.at-temple-mill.co.uk](http://www.at-temple-mill.co.uk)







# NEIGHBOURHOOD WATCH



The usual scams are appearing under different guises:

1. This one arrived on Judy's phone recently. A fake email claiming to come from the Driver and Vehicle Licensing Agency (DVLA). The email states that you are not up to date with your current vehicle tax and threatens car owners with a fine if they fail to pay. You are then directed to fill out a DVLA form on a malicious link, and the rest is the usual demand for personal data. Of course it's the usual rubbish, and please forward any such email to '[report@phishing.gov](mailto:report@phishing.gov) .uk.'
2. Email users watch out for an Invoice Scam by fraudsters impersonating payment provider PayPal. These crooks email a receipt for a high-value order to encourage you to call a fake phone line. A scammer will then try to obtain your personal details over the phone etc,etc. - please send the email as at 1. above. (info from Which? website ).
3. Beware scam emails claiming your internet protection is ending. Crooks impersonating anti virus company McAfee claim renewing the fake subscription will give benefits such as browsing, identity protection and customer support. The links lead to a malicious website ,etc.  
McAfee says please check with McAfee.com to confirm your subscription. Any such emails please forward @ 1. above. ( Source- Which? and D/Mail.)

Thames Valley Police have asked all dog owners to be particularly careful at this time of the year. With the fields full of new born lambs and calves there is a real danger to livestock from out of control dogs. Keep your dog on a lead and enjoy your walk.

I've had a couple of enquiries from local residents concerning the grey Landrover Defender parked in Acre Ditch near the Church yard and village hall car park. I've passed the concerns onto T.Valley Police.



# CALENDAR OF EVENTS

## MAY

- 1st - Ladies Coffee Club- Wykham Arms - 11am
- 3rd - Mens Brunch - Sun Inn - 11.30am
- 3rd-5th - Artweeks Exhibition - Village Hall 11am-5pm
- 4th -12th - Artweeks Exhibition - Shrubbery Cottage 11am-6pm
- 7th - Friendship Club - Village Hall 2pm
- 8th - Horti Society - Village Hall 7.30pm
- 11th - Plant Sale - Carter's Yard 10am
- 16th - Sibfords History Society - Village Hall 7.30pm
- 18th - Horti Spring Show - Village Hall 2.30pm
- 23rd - Film Night: "One Night " - Village Hall 7.30pm
- 25th - Book Swap Cafe - Village Hall 10am
- 28th - Sibford Photography Club - Village Hall 7.30pm
- 29th - "Goldeneye" film & talk - Village Hall 6pm

## MAY BIN COLLECTIONS

- Green Tuesday: 7th; 21st
- Blue/Brown Tuesday: 14th; 28th

Unwanted clothing and shoes may be recycled anytime at the Textiles/ Recycling Bank at Sibford School Swimming Pool. Bottle banks at Sibford Ferris: Elm crossroads and Sibford Gower: Wykham Arms car park.

## SIBFORD BUS SERVICE

### Bus 75 - Timetable from 25 July 2022

Leave Sibford Ferris to Banbury: 06:56, 08:37, 11:09, 13:59, 17:31 (Sat only)

Leave from Banbury for Sibford: 11:35 (Sat), 11:40 (Mon-Fri), 14:35, 17:40

Leave Sibford Ferris to Stratford: 11:58 (Sat), 12:02 (Mon-Fri), 14:53, 17:58

Leave from Stratford for Sibford: 06:02, 07:30 (Mon-Fri), 07:54 (Sat)  
10:15, 13:15, 16:38 (Sat only)

No service on Sundays or Bank Holidays.

# Nigel Fletcher



## Exhibition



A large collection of paintings including Still Life Flowers, Local Landscapes and New Greeting Cards. Teas and demonstrations throughout the fortnight

[www.nigelfletcher.co.uk](http://www.nigelfletcher.co.uk)

07792 657 248

# DOG WALKING

- ✓ 1-1 / Group walks
- ✓ Pop in Pet Care
- ✓ Sleepover Dog Sitting
- ✓ Dog Taxi Service

 [countrycaninecompany.co.uk](http://countrycaninecompany.co.uk)

 07394 615094



Celebrating 70 Years  
1952-2022

## The Forge Garage (Brailes) Ltd

Your local, family-run garage.

MOT's, Servicing, Air Conditioning, Diagnostics and In-Depth Repair Work

Pump attended fuel station also selling Calor gas, kindling, coal, BBQ coal  
We're here to help so please contact us today on 01608 685247 if you have any questions  
about your vehicle, or for a free no-obligation quote.



<https://www.theforgegarage.co.uk/>  
Telephone: 01608 685247;  
Email: [enquiries@theforgegarage.co.uk](mailto:enquiries@theforgegarage.co.uk)

