

The Sibfords Historical Society 2024 Quiz



This quiz was produced by Maureen Hicks, Tim Huckvale and
Keith Hicks for the SHS social in February 2024

1.

A renowned cleric lived in Holmby House, Sibford Ferris from 1988 to 2000.



Can you name his religious office?

2.

In which year was Sibford Manor sold to be a school?



- A. 1840
- B. 1842
- C. 1845

3.

How much was the National Lottery Community Fund Grant towards the new small village hall?



- A. £127,950.00
- B. £139,762.00
- C. £154,315.00

5.

What is the name of the new development on Hook Norton Road, Sibford Ferris?



6

6.

What is the name of the footpath that runs through Sibford school?



7.

What are these people doing?



- A. Practising their movements for the ceremony of rockets at the Elm
- B. Limbering up before a dwile flonking competition in the Slinket
- C. Learning the bean-planting Morris dance as part of a leadership training course on the Hill

8.

In which month does Bishop Blaise saint day fall?



- A. January
- B. February
- C. March

9.

In which decade did mains water come to Sibford Ferris?



- A. 1910's
- B. 1920's
- C. 1930's

10.

Which is the oldest settlement?



- A. Gower
- B. Burdrop
- C. Ferris

11.

What person is the link?



12.

What was the name of Sibford's 'Flying Doctor' who lived at Nicholas Corner?



13.

What high office did William of Wykeham hold?



- A. Bishop of Oxford
- B. Lord Chancellor of England
- C. Principal of Winchester College

14.

What was the given surname of Queen Victoria's Pageant Master who lived in Sibford?



15.

What person is the link?



16.

When was Sibford Ferris Manor sold to Swan Hill for housing development?



- A. 1998
- B. 1999
- C. 2000

17.

In the early 1900's where in Sibford Ferris could you take your Sunday joint for roasting?



18.

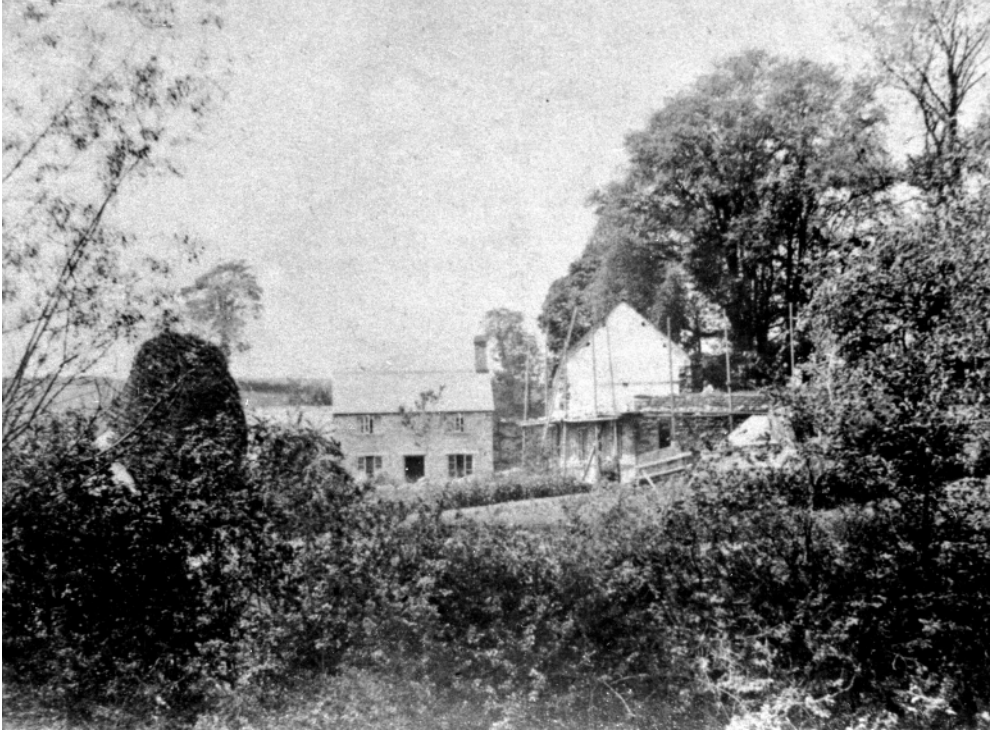
During WW1, what did Sibford Gower School children send to Bloxham?



- A. Conkers
- B. Blackberries
- C. Crab Apples

19.

When did Temple Mill stop milling corn?



- A. 1940's
- B. 1950's
- C. 1960's

20.

When was the seat installed at Sibford Gower Pond?



Answers

1. A renowned cleric lived in Holmby House, Sibford Ferris from 1988 to 2000. Can you name his religious office?

Bishop of Dorchester

Anthony Russell, later Bishop of Ely.

A keen horseman, upon appointment as area Bishop of Dorchester he moved his episcopal residence to Sibford in order to secure suitable stabling.



2. In which year was Sibford Manor sold to be a school?

B. 1842

It was sold by Thomas Walford for £1200

3. How much was the National Lottery Community Fund Grant towards the new small village hall?

C. £154,315

Together with £18,143 from Cherwell District Council, plus village donations.

The new hall was opened on 12th September 2002.

4. How old will Holy Trinity Church be in 2024?

B. 184 years

Consecrated in 1840, probably on Trinity Sunday, 15 June.

5. What is the name of the new development on Hook Norton Road, Sibford Ferris?

Deanfield Heights

The original development proposed by Gade homes was called *Orchard View*.

The name was changed when Deanfield Homes took over the development in 2021.

6. What is the name of the footpath that runs through Sibford school?

The d'Arcy Dalton Way

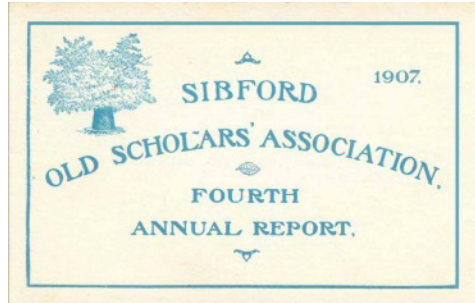
A long-distance footpath created in 1986 to celebrate the Oxford Fieldpath Society's diamond jubilee, It runs 65 miles down the western edge of Oxfordshire from Wormleighton reservoir to Waylands Smithy on The Ridgeway Path.

Colonel W P d'Arcy Dalton was a founder member of the Oxford Fieldpath Society.



7. What are these people doing?

A. Practising their movements for the ceremony of rockets at the Elm



Sibford School has a long association with elm trees at the crossroads 500m east of Sibford Ferris (next to the current bottle bank). They adopted an image of the original “Old Elm” on the NE corner as their emblem in 1907. That elm died and disappeared around 1980. A successor, the “New Elm” on the SE corner, succumbed to Dutch Elm disease and was felled in 1982. A third elm was planted in 1983 in the school’s small garden on the SE corner.

A regular feature of SOSA annual reunions was (is?) a late night trek up to the Elm for a sing-song and “Rockets”, for which they gathered in a circle and lowered and raised their arms in imitation of a rocket launch.

8. In which month does Bishop Blaise saint day fall?

B. February

Bishop Blaise of Sebaste was an Armenian physician whose feast day is 3rd February. He is the Patron Saint of wool combers and sufferers from ENT illnesses. He met his death in 316 AD, first tortured with iron combs then beheaded.

Wool-combing was a cottage craft carried out in Burdrop.



9. In which decade did mains water come to Sibford Ferris?

C. 1930's

Mains water came to Sibford Ferris in 1935. The photo was taken outside the Old Bakehouse.

10. Which is the oldest settlement?

B. Burdrop

The name *Burdrop* means 'the burgh on the heath'. A burgh is a fortified manor house. It was thought to be an outpost of the Roman settlement at Madmarston.

11. What person is the link?

Godfrey Baseley

Godfrey Baseley (1904 – 1997) was a scholar at Sibford School.

He created *The Archers*, the longest running radio soap opera in the world.



12. *What was the name of Sibford's 'Flying Doctor' who lived at Nicholas Corner?*

Dr Sidney Agnew

Dr Sidney Agnew, born in Ireland, came as a GP to the village in 1952. He took a year out in 1976 to be a Flying Doctor in Northern Australia.



13. *What high office did William of Wykeham hold?*

Lord Chancellor of England

William of Wykeham (1320 – 1404) served two terms as Lord High Chancellor. He founded New College, Oxford in 1379, and Winchester College in 1382. He was also the clerk of works when much of Windsor Castle was built.

Locally he built the Tythe Barn in Swalcliffe, shown here.



14. What was the given surname of Queen Victoria's Pageant Master who lived in Sibford?

Stevens

Frank Lascelles (1875 – 1934) was the younger son of the Rev. Edward Stevens, vicar of Holy Trinity church, Sibford. He gave himself the name Lascelles to cement his royal association.

15. What person is the link?

Guy Woolfenden

Guy Woolfenden OBE (1937 – 2016) lived in Malvern House in Sibford Ferris.

He was a composer and conductor and Head of Music at the Royal Shakespeare Company.



16. When was Sibford Ferris Manor sold to Swan Hill for housing development?

C. 2000

The Manor and its grounds were developed as Walford Road, named after Thomas Walford, who sold the Manor to the Society of Friends in 1842 to found the school. The money raised from the sale of the Manor in 2000 was used to fund development on the main school site.



17. In the early 1900's where in Sibford Ferris could you take your Sunday joint for roasting?

The Old Bakehouse

The Long family lived and baked bread in the bakehouse except on Sundays when villagers could take their joint of meat to be cooked in the baker's oven.



18. During WW1, what did Sibford Gower School children send to Bloxham?

B. Blackberries

Sibford's primary school children were given half-day holidays to pick blackberries from local hedgerows. They were taken by cart to Bloxham station, sent to London by rail and used to make jam for the servicemen.

Headmaster (1912 – 1932) Oliver Hooper recorded in his logbook on 4th November 1918:

“One ton, six hundred weight and 94 pounds have been sent from school to Bloxham.”



19. *When did Temple Mill stop milling corn?*

C. 1960's

Temple Mill ceased grinding corn when it entered a period of disuse on the farm's conversion to livestock in the 1960's.

Although not named as such, Temple Mill is mentioned in the Domesday Book of 1086: *In Sibford Gower Abba holds 11 hides of Hugh [de Grandmesnil]. There is land for 8 ploughs. In demesne are 2 [ploughs], and 4 acres of meadow, and a mill rendering 32d, and 13 furlongs of pasture. It was and is worth £4.10s. Baldwin held it.*

20. *When was the seat installed at Sibford Gower Pond?*

1977

The seat was installed to celebrate Queen Elizabeth II's silver jubilee.

