



7th MAY

2023

Join the

Sibford Street lunch

Bring your own picnic and drinks, and
join the long Sibford Table

To reserve your place email:

CORONATION@SIBFORDS.UK

Acre Ditch 12.45 for 1.30pm



afternoon fun & entertainment 3-5pm

Coronation

OXFORDSHIRE

ART
WEEKS

Artweeks 2023

13th-21st
May
10am-6pm

TEMPLE MILL LOFT
Sibford

"A diverse & original
mix of creative
artworks"



TEMPLE MILL LOFT



ED'S THOUGHTS

Coronation, Coronation, Coronation... let's just have a BIG PARTY for all of us in the Sibfords - Book your seats, come along and have a lot of fun! Full details on page 9

And let's not forget ARTWEEKS - 13th-21st May. What about FILM NIGHT or FILM NIGHY (!) on the 25th.

And of course - there's the SUPER SPRING SHOW on the 20th

Thought for the month:

"Come down off your throne.....

And I can't find my way home"

Steve Winwood



LETTERS AND NOTICES

VILLAGE HALL LOTTERY!!

April Winners

1st prize Catherine Berks

2nd prize Jo Connor

3rd prize Philip Hilton



MARIE CURIE-HOUSE TO HOUSE COLLECTION: March 1-31st 2023 **Sibford Ferris**

The last house to house collection in Sibford Ferris in support of the Great Daffodil Appeal took place in 2020. With the cost of living crisis and backlog of care caused by the pandemic, the demand for Marie Curie nurses remains very high. Every £20 raised pays for an hour of care from a Marie Curie nurse and for the loved ones of someone with a terminal illness every moment spent together is priceless.

I am pleased to confirm that the house to house collection in Sibford Ferris has resulted in the sum of **£313** being raised.

Many thanks to the many householders for their generous support.

David Bennet - Volunteer



LETTERS AND NOTICES

On May 13 our brilliant postman, Steve, is retiring after 38 years pounding the streets of Oxfordshire. He's been delivering our letters, giving treats to our dogs, supplying dodgy racing tips, moaning about Tottenham and telling us where our parcels are hidden for the last eighteen years in our villages. He's been everything that's good about living here: a smiling, friendly, face - whatever the weather - who always want a (lengthy) chat. After Steve's last round he's going to head to The Wykham Arms at 2:30 so if anyone is about and wants to buy him a drink or show their appreciation to him in any way, then please come along.



COTSWOLD CLOSE PLAY AREA

Some updates for you. The new fencing has now been erected and looks superb. It complies with all the latest Health and Safety Recommendations and should last for years, as the posts have a protective sleeve on to prevent rot under ground.

The Baby Swing seat is on order so will be up soon.

The Parish Council are looking for funding to help replace the bigger wooden walkway. There are some smaller projects to provide too , such as a new bench , a round swing and new "Springers".

If anyone in the villages would like to sponsor an item of play equipment then please contact our Parish Clerk , Kirsty Buttle

By email sfpc@thesibfords.org.uk.

Ginny Bennett. Parish Councillor

VILLAGE COOKBOOK

Sibford Church is planning to produce a Village Cookbook later this year and villagers are invited to share their favourite recipes, commenting in just a few words on where/how they came by it. We cannot guarantee that every recipe received will be included but look forward to your contributions. The closing date is 31 August 2023. Please send your recipes to: recipes@thesibfords.uk.

Barbara Foster



LETTERS AND NOTICES

A Greener Sibford Community

Blessed as we are to live in this beautiful area. We've been thinking about how together we could help make the Sibfords an even better, greener and more sustainable community. If you feel the same way, we would welcome your response and support, even in the smallest way.

You probably know that some years ago Hook Norton set up their own voluntary organisation to help residents to use electric vehicles, advise on domestic heating and insulation, and encourage the building of zero-carbon homes. It is a very practical approach which seems a good model to us. Legislation and taxation already means that in the next few years, most of us will want to make optimum decisions about replacing our cars, oil and gas boilers, and other means to cut energy costs. Some within the community have gone further with solar installations and net zero energy housing. Many have experience with suppliers and heat pump installations for example.

We think that if we could share the expertise we already have, and develop a shared knowledge base about the pros and cons of particular solutions and the best technologies and deals around, everyone could gain some benefit.

We invite you to think about whether you have professional or user experience in this area which you could share, and whether you would be prepared to spend a little of your time with us to develop a community approach in an area of common benefit.

At the moment this is not a Parish Council initiative, but we will of course keep both the Sibford Ferris and Sibford Gower Parish councils up to date with our plans and seek their help and support where appropriate.

If you can, please drop us a line by email to sibford.community@gmail.com and let us know what experience you have, what are the most pressing issues for you, or how you might be willing to contribute. Our first step would then be to bring people together to discuss how to take this forward.

Stephen Gomersall, Tom Dyson, John Wass, Stewart Roussel



Locally grown Sibfords seasonal cut flowers.

Bunches and bouquets available

April - September

Available from our flower stall opening in April

or subscribe for a monthly bouquet

Florist and DIY bridal buckets also available

Contact carolyn@familywhites.co.uk

Sustainable flowers. Scented, seasonal -
grown, not flown!

Stay in style in the Sibfords

Sumptuous self-catering

Newly refurbished self-catering accommodation set in stunning private gardens with heated swimming pool, tennis court and croquet lawn. 4 beds, 5 bathrooms. Sleeps 8 (plus 4 in the main house for larger groups).

Private dinners also catered for up to 16 guests.

Contact **Sally Wass**

T: 01295 780104

E: sally.wass@btinternet.com

www.holmbyhouse.com

Holmby
House 

LETTERCARVE

Hand-carved, hardwood signs for the home and workplace.

Personalised boards and platters, stable plates and memorials.

#MadeInSibford

Browse the website:

www.lettercarve.com

e: lettercarve@gmail.com



VILLAGE HALL NEWS

Film Nights Thursday May 25th, Thursday June 28th, doors at 7pm, film starts at 7.30pm

The very popular Film Night is finally returning to Sibford. Refreshments available for a small charge or please feel free to bring your own wine. This is a free event, but donations welcome.

Charity Music Night, Saturday April 29 7-11.30pm

In aid of Headway and Dementia Oxon. Red and Grey (eclectic covers band), Belle Collective (acapella singers) plus DJ's. Tickets £15 including curry. Licensed bar. Call/text 07714838108.

Book Swap Saturdays and Cafe: May 13th, June 17th, July 15th 10am-12pm

Books for all ages and genres at this popular event. Come and have a drink and a chat in the Small Hall. Teas and coffees available. It's free to borrow books but donations welcome.

Support the Village Hall by joining the Sibford Lottery

We have an amazing community lottery running with fantastic cash prizes every month. Join now and next month could be your winning month! Existing members, just a reminder to renew your annual subscription. Funds from the lottery are supporting the Village Hall Roof Fund. Please contact juliette53@btinternet.com or 07703 836856 to join or renew. £48 for 12 months or £4 a month.

Polite reminder – please do not walk your dogs on the Village Hall field

This is a play area for children and a public facility where for obvious reasons dog walking is prohibited. Keep dog walking for our beautiful countryside paths and fields instead.

Book the Village Hall for your next event using our new online booking system!

Our online booking system will launch on June 1st, and you will be directed there via our website www.sibfordvillagehall.org.uk. We have preferential rates for village residents, only £11/hr (one hall); and £20/hr (both halls). Please use us for your next birthday party or community gathering.

VILLAGE HALL ONLINE BOOKING

The Village Hall booking system will change to ONLINE at the beginning of June. You will see how to get onto the site, when using thesibfords.org.uk website

All user groups will be contacted by Ginny Bennett, [Booking Manager] to advise of the date that your current bookings end, so you will know when to start using the new system. If anyone is unable to book online then Ginny can be contacted as usual.



FILM NIGHTS

There was a very good turn out for our first filmnight since Covid.

Please note that for the time being the filmnight will be on the last Thursday of each month.

On April 27th we are showing **Empire of Light**. Please check April Sibford Scene for details.

On Thursday 25th May the film is **Living**.

Bill Nighy (Love Actually) gives one of the finest performances of his career in a drama about the last act of one's life. Having lived in a stupor since his wife's death, Mr Williams lives out his life through the observance of daily rituals. But then the civil servant receives some shocking news. A modest man, Williams embarks on an odyssey of discovery, encountering seaside bohemian Sutherland and opening up to co-worker Margaret.

Doors open at 7. Refreshments available. Film starts at 7.30

Petra Berry



LETTERS AND NOTICES

Richard Austing

I am sorry to let those of you who knew Richard and Jenny Austing that Richard died recently following a terminal illness. They lived in Barley Close, Sibford Gower with their two boys, Peter and John. Richard was Head of the Lower School at Warriner School and reformed Sibford Scout Group, starting a new Cub Pack with Erica Wimbush in 1981. Jenny, who now lives in Essex was a former editor of the Sibford Scene.

After 3 very happy years in our cottage in Burdrop, our family of 4 (Mum, daughter, dog, and cat) must sadly find a new home in the Sibfords. Please contact me if you know of anything for rent. Tessa Sparks 07930375714.



CORONATION CELEBRATIONS



Please come and make this a day for **everybody** in Sibford to remember!

Come and join us on Sunday the 7th of May for a day of celebration, beginning with a **Church Service** at 12.15 followed by **THE BIG LUNCH PARTY** on Acre Ditch at 1.30. Bring your own lunch and join in the fun. Already over 100 people have put their names down and we need many more!



Book your families/group of friends free seats at the table by emailing coronation@sibfords.co.uk or by scanning the QR code. WE HAVE LOTS OF SEATS, SO GET SCANNING/EMAILING!!!!

We will provide complimentary cake and you can enjoy an afternoon of fun from 3-5 which includes:

Cash/card bar

Country Dancing for everyone to join in

Bouncy castle & inflatable slide

Delicious Ice Cream

Tea and coffee

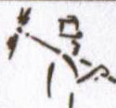


There will be a **Royal fancy dress parade** organised by Clemmie Broom before lunch. There will also be a prize in the Village Hall at 3.30 for the school class prize making the best crown.

There will be limited parking in the village hall and surrounding streets so please consider lift share, drop off or walking. There will be a car park at the Village Hall where we are also having a bouncy castle and a slide for children.

If anyone would like to volunteer with setting up or clearing please contact: coronation@sibfords.uk

We ask that you please take your rubbish home.



CHIMNEY SWEEP

Jonathan Perry

Guild of Master Chimney

Sweeps Qualified

**Open fires, Inglenooks,
Wood burners, Agas**

*All work certificated for
house insurance purposes*

For a clean, friendly and professional
service please contact me on:

Tel: 07557 058051 (Swalcliffe)

Email: jperrychimneysweep@gmail.com

Holiday Cottage in Cornwall

On the beautiful north coast in Poldark country, character cottage set in a large south-facing enclosed garden, is available for holiday lets. It is situated on the outskirts of the vibrant and friendly village of St Agnes.

Scrumbles Hollow sleeps six in three double bedrooms, one with ensuite shower room, plus a family bathroom. Full central heating.

The spacious cottage has an open fire place in a cosy sitting room, while the dining room boasts a log burner. New, fully equipped kitchen and separate utility room for sorting out sportswear after a day on the beach or walking the breathtaking countryside.

Lots of good local pubs and restaurants, shops and galleries. Excellent public transport connections, including Newquay airport (half an hour by car).

For more information, please contact Linda on 01295 780 242 or 07973 226 032 or lindalaneyolo@gmail.com.



Kelmscott Manor

Following on from the talk by Katherine Bradley on 20th April, in which she spoke about Oxfordshire and the Cotswolds' Creative Women, including Jane and May Morris, wife and daughter of William Morris, we are planning to visit Kelmscott Manor, the family home. William Morris, (1834 -1896), the poet, designer, craftsman and radical socialist was much influenced by his country residence, and its surroundings.

On August 2nd we have the chance to learn about his life and work and to view the house, which was thoroughly renovated during lockdown. A coach will take us from Sibford Village Hall to Lechlade, where there will be light refreshments followed by a guided tour of the Manor, and a cream tea later in the afternoon. Tickets will be £40 per person, and can be obtained from members of the SHS committee or by email to shs@thesibfords.uk . Please let us know if you are interested in coming. After June 15th we intend to offer seats on the coach to members of the Hook Norton History Society, who had a talk on Kelmscott Manor in April.

Inspector Morse

On 18th May, in his talk "The Oxford of Inspector Morse" our speaker Alistair Lack will explore the characters of Inspector Morse and his colleague Sergeant Lewis, as depicted in Colin Dexter's books and appearing in the famous and popular TV series based on the novels. The films make the most of their settings in and near Oxford, as well as pubs in and around the city.

Doors open at the Village Hall 7:15pm, talk starts 7:30pm. Refreshments will follow. Non-members £3 pp.

Diana Hughes

QUALITY FISH DIRECT
FROM GRIMSBY MARKET

Proprietor: Robert Hill

hill42804@gmail.com

07578 195979

Freshest fish and shellfish direct from
Grimsby to Sibford. Now delivering
directly to your home every Thursday
from 3.45 - 4.15



MISS "T" CATERING.

Good Home Cooked Food

Catering for events such as:

*Anniversaries, Weddings,
Christenings, Birthday parties,
Funerals & private dinner parties.*



*Also available
Cutlery and Crockery Hire.
Contact Victoria Taylor on:*

Mob: 07841 910037

Home: 01295 780206



Original Wooden Platters & Boards

Crafted by hand at Temple Mill in the Sibfords

Trunks and branches from fallen trees planked, seasoned, designed at
Temple Mill. Unique, often quirky, always useful boards for:

- ~ Presentation – Food Theatre! ~ Cake Boards ~ Cheese Boards ~
- ~ Chopping Boards ~ Serving Platters ~ Etc ~

**** 5th Wedding Anniversary: 'Wood' ****

Between Sibford Ferris and Sibford Gower. Welcome to view.

07580 597042 - jonquilsabin@hotmail.co.uk – 01295 780418

www.at-temple-mill.co.uk





FRIENDSHIP CLUB

It seems very strange to say King Charles 111

But it doesn't stop the Friendship Club celebrating a Coronation on May 9th

In the Village Hall

On the same day we will also have the AGM.

To all members - please try to attend

Evey Boughton

RED HORSE VALE



Red Horse Vale are a long established and family run distributor of Fuels for heating and vehicles, as well as Building, Farm and Garden Supplies.

Solid Fuels • Logs and Kindling Wood

Gas in Cylinders • Central Heating Oil

Farm Oils • Sand and Ballast

Postcrete • Cement • Slabs

Fencing Materials • Garden Supplies

Top Soil • Composts • Flower Pots

Wood Chippings • Animal Feeds

Call us for a free quotation!

OPEN HOURS

MONDAY - SATURDAY

8am to 5pm

www.redhorsevale.co.uk

01926 642 832

Windmill Farm, Banbury Road (A422), Oxhill,
Warwickshire, CV35 0RP

**THE VILLAGE SHOP
HOOK NORTON**

National Lottery

Grocery - Greengrocery - Bakery - Wines

Spirits - Confectionery - Newspapers

Magazines - Cards - Bottled Gas

Open Monday to Friday

8 am to 8 pm

Saturday 8 am to 8 pm

Sunday 8 am to 6 pm

Telephone: 01608 737245

Please note: On Sunday, we open
at 9am

C. A. Berger

Painting & Decorating
Interiors & Exteriors
Residential & Commercial
Carpentry Repairs
and
Property Maintenance

Mobile: 07875 212 315

Office Tel/Fax:
01295 738633



NGS Sibford Open Gardens – Sunday 25th June 2-6pm
Combined admission for all gardens £7 adult –
children free

A group of 6 very different and interesting gardens with 'Shrubbery Cottage' joining our opening for the first time for this year's NGS event.

Do come along and enjoy afternoon, support the NGS and its Nursing Charities (plus many more) and enjoy some tea and delicious homemade cakes at the village hall in aid of Holy Trinity Church and pick up some plants for your garden at our plant stall at 'Carter's Yard'.





DID YOU KNOW?

Sibford Gower Village Pond



This month's calendar photograph showing the pond in Sibford Gower was taken by Colin Lamb. Historically, and at the heart of the village, the pond has been a feature in our village for hundreds of years attracting generations of families to enjoy it. Various springs arising from the bank below Elmridge Farmhouse come together forming a pool, which until 1885 constantly flowed across the village track

making a swampy area below Pond Cottage.

In the late 1800's work was undertaken to kerb it and an entry in Rev E Stevens diary for 7 September 1885 recorded that, *'The pond at Sibford Gower is now finished and considerably improved; but I fear it is done in such a manner that the improvement will not be very permanent, though Adkins has done all he undertook to do for £9. I think that if the first plan had been carried out, the estimate for which was £16 it would have been better, would have looked better, and would have been a great and permanent improvement. The area appears too large for the supply of water which leaks away all round the pond.'*



Since it was formed in 1894, the Gower Parish Council has spent much time discussing pond matters – ownership (which has never been established,) ducks, fish, frogs, newts, emptying and cleaning and traffic matters. In recent years, and for various reasons, the water table has dropped significantly especially during the summer months. The water has become very shallow reducing oxygen levels making it unsustainable for the shadow carp which used to be seen in its clear waters. It is said that you are not a true Sibfordian until you have fallen into the village pond!

In 1887 an oak tree was planted by the pond to commemorate Queen Victoria's Golden Jubilee. Sadly, the tree did not thrive. On October 22, 1887 Joseph John Lamb, met his end by falling from a chestnut tree in the garden of his home, West Town House in Sibford Ferris. He was killed instantly while knocking down the ripe fruit for his son Theodore. The chestnut tree now growing by the pond in Sibford Gower was raised from a nut picked up by Theodore, from the side of his father's dead body. This childhood trauma may have led to Theodore Lamb later living as a hermit on Sibford Heath.



BESPOKE DESIGN SERVICE FOR
CUSTOM MADE FURNISHINGS

Pattern book room for you
to browse fabric designs
Curtains, blinds & cushions
Loose covers & lampshade making
Headboards & bedspreads
Curtain poles & tracks
New sofas & chairs & reupholstery



01295 788145

ann@annwoolgrove.com | www.yarnhill.co.uk

www.annwoolgrove.com

PILATES IN SIBFORD

On-line classes and private tuition available

Madeleine Wilson M.Sc, Mat & Studio Master Teacher Offers

Bespoke One to One and Duet sessions

Training on Specialised Pilates Equipment

Reformers, Chairs, Barrels & Cadillac

Small Group Matwork Classes

For all Levels from Beginners to Advanced

Tel: 01295 78027

Mob: 07905 953300

email: madeleine@pilatesinsibford.co.uk

www.pilatesinsibford.co.uk



SIBFORDS WALKING GROUP

WALKING DATES

15 May; 22 May; 5 June; 19 June

Please note: 3 Monday bank holidays this May with no walk

We leave the village hall on foot or by car at 10 am sharp to do a circuit of approximately 2 hours. You are advised therefore, to get to the village hall by 9.55 am latest. Often a shorter version of the walk is possible but that it is advisable to check with Sue just before

Dogs are welcome provided they are put on the lead when requested. Walking boots and poles are recommended but not compulsory. Some routes include stiles. If you would prefer a shorter walk, please contact Sue to discuss as it is sometimes possible to leave a car about halfway, so the less energetic may drop off and drive home. At the village hall, please park either on the road or on the grass field beyond the tarmac.

Please don't hesitate to ring me on 01295 780365 or email sebannister@gmail.com if you have any queries.

Sue Bannister

FOOTPATHS

Ian Sharp, ian@iansharp.net, Lamb's Croft, Back Lane, Sibford Ferris, OX15



WELCOME TO SIBFORD

If you are new to the Sibfords and would like any advice on our village, please call Ivor Hopkyns on T: 788367 (Gower & Burdrop) or Nic Durrant T: 788865 (Ferris). We are lucky enough to have a really great village website at: thesibfords.org.uk



In Your Garden - May

I have just read in an old RHS Gardening Magazine that the first Saturday in May is called World Naked Gardening Day. Blimey! Gardeners are encouraged to shed their clothes and bond with Nature as they tend their gardens. Really? They then advise you do not prune roses, or dig around cacti whilst bare. Really? I never knew this. However keen you are to try this I suggest you don't do it in the front garden..

1. Be wary of late frosts, and do not plant out dahlias too early.
2. Finish planting your potatoes, and if the ones you planted earlier have grown to 4 or 5 inches, its time to earth them up.
3. Pansies and violas have been cheering us up in pots since Christmas. You can keep them going by always cutting off dead heads, and snipping back any straggling weak growth. And feed them. They seem to love tomato feed.
4. As usual keep hoeing out the weeds and digging out the dandelions.
5. Make sure the vents and windows in the greenhouse are opened in the morning, and closed up in the late afternoon. It is best to water the plants early in the morning, or after a very hot day, in the evening.
6. Tall plants, such as delphiniums, aconitums and dahlias are going to need some supports before they get any taller; and it is time to put up bean poles, and supports for peas before you plant them.
7. Now that the daffodils have finished you can dig up clumps and separate them, as you probably have done with snowdrops last month. They need replanting straight away - do not leave them hanging around or they dry out.
8. Our enemies are creeping around the garden. Get back on your slug hunt in the evenings, and watch out for whitefly in the greenhouse. Roses should be sprayed, as the greenfly always seem to turn up, and red Lily beetles will need squidding. Gooseberries can also be attacked by sawflies.



In Your Garden - May

Cont'd

9. On the 28th April Quarry Nurseries will open up again. The delightful gardener there, Phillip Gilbert will have all the summer bedding plants you might want, and vegetables and tomatoes. This nursery is a treasure, and so

10 The Chelsea Chop is always a good idea. I usually cut my perennials back by one third to a half. You then get a stronger growth and flowers continuing on through the summer. It is a nice idea to buy yourself the Open Gardens Yellow Book, which is on sale now, and then you can see how many gorgeous gardens will have opening days in this area. Enjoy them, and get inspiration from them.

Jupe Hitching



The Wykham Arms

We're now open inside and outside! and for takeaway, too

Homemade Desserts

Bespoke special occasions catered for including anniversaries & birthdays

Weekly Specials

Please tel **01295 788808** or email **info@wykhamarms.co.uk** to book or for more information



The Wykham Arms



@wykhamarms



The Septic Tank Store

FAMILY RUN BUSINESS WITH OVER
30 YEAR'S EXPERIENCE

*Sewage Treatment Plant installation
Irrigation and waterpipe
Rain harvesting
Drainage projects
Outdoor electrical works
Ditch clearance and field drainage*



Contact us for friendly advice

www.theseptictankstore.co.uk

T: 01295 236101 E: sales@theseptictankstore.co.uk



Registration
Services



Oil Boiler Servicing

Oil Aga Servicing

New Oil Boiler Installations

Hook Norton 01608 738156

Emergency Breakdowns: 07973 128987

SIBFORD STORES & POST OFFICE, SIBFORD FERRIS. OX15 5RG

Tel: 01295 788317/788348

YOUR LOCAL CONVENIENCE STORE AND NEWSAGENT

We deliver newspapers and magazines, 7 days a week to all the surrounding area. Place your regular order today, whether for 1 day a week or 7. Always a wide selection of magazines, specialist titles to order.

Chilled & frozen foods, groceries, cigarettes, beers, wines and spirits, fresh fruit and vegetables, pet food, household goods, toiletries, medical requisites and lots, lots more...

Health Lottery, photocopying, fax service, dry cleaning

We will also undertake your mailings for you - just ask

Always an excellent selection of Hook Norton bottled beers in stock

Telephone your grocery order for free local delivery

OPENING HOURS

Monday - Saturday 8 am - 6.00 pm

Sunday 8am - 1.00 pm

PLEASE SUPPORT YOUR LOCAL POST OFFICE - THERE ARE LOTS OF PRODUCTS & SERVICES
AVAILABLE ON YOUR DOORSTEP



LOCAL NEWS



Kids and Caffeine

At Tadmarton Village Hall, OX15 5SG



Exciting news...

Now **EVERY Saturday 10am-12noon**

Starting Saturday 4th March

Amazing selection of toys for children aged 0 – 8 years

£2.50 per child

Booking advisable to avoid disappointment as spaces are limited tadmarton.kc@gmail.com

Join our WhatsApp Group and e-Newsletter for the latest updates

All welcome from far and wide!

Special occasions will be themed craft sessions.

First up...Mother's Day Crafts on Saturday 11th March



Find us on  Kids and Caffeine

CHURCH SERVICES

Quakers – Sibford Gower, Sunday, 10.30 am

Roman Catholics – Brailes, Saturday, 5pm; Shipston, Sunday 9am Kington, Sunday 11am

Baptists – Hook Norton, Sunday, 10.30 am

Methodists – Marlborough Rd Banbury. Sunday, 10.30am Shipston-on-Stour. Sunday, 10.30am (All the same circuit)

LOCAL MARKETS

Banbury – Every Thursday & Saturday. Farmers Market – 1st Friday of the month

Deddington Farmers – 4th Saturday of the month

Chipping Norton – Every Wednesday. Farmers market – 3rd Saturday of the month

Stourton Farmers – 1st Thursday of the month. 6–8pm

Do you need a helping hand to find the mortgage, pension or investment that's right for you?



For Independent financial advice please
get in touch



SCR Financial

Call Sue for a free telephone consultation

01295788475

sue@scrfinancial.co.uk

www.scrfinancial.co.uk

Authorised and regulated by the Financial Conduct Authority FCA# 959557

- Bespoke bathrooms, kitchens and carpentry
- Fitted furniture
- Plumbing and electrical works
- Home improvements and renovations

**Hugo
Seely**

Trading in the Stirlings since 1992

From concept to completion

*Exceptional value,
exceptional service*

T: **01295 780355**

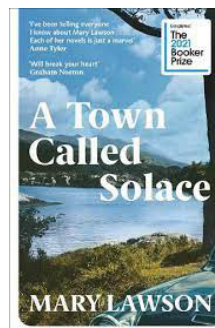
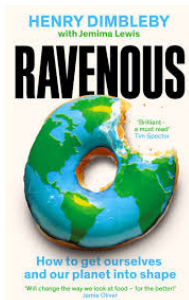
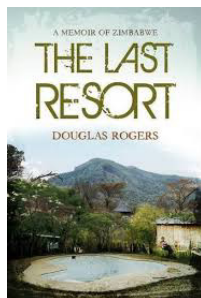
or **07773 319239**

E: hugo.seely@gmail.com

Excellent references



WHAT WE'RE READING.....



SIBFORD PHOTOGRAPHY CLUB

Two more super pictures.....



Pukauni Falls



Sperm whale tail

Yoga

Sibford Village Hall

Tuesdays: Slow Hatha Yoga
9-10am

**Tuesdays: NEW Beginner
Yogalates (A fusion of Yoga and
Pilates)** 7-8pm

Thursdays: Flow Yoga
9-10am

Thursdays: Chair Yoga
10.15 - 11.15am

Any enquiries to
juliette53@btinternet.com

OPUS

OPUS Property Services Ltd

**01295 780652
07816592124**

All aspects of property maintenance
and refurbishment undertaken from
replacement light bulbs and tap
washers to new ceilings and floors.

Plumbing, tiling, wood flooring, floor
renovation, under floor heating,
plastering, electrics, decorating, damp
proofing, carpentry, locks, drains,
kitchens, bathrooms etc

**Call us or visit our website for
more information:
www.opusps.co.uk**

Advertising Rates in The Scene

The Sibford Scene is delivered to 480 homes in Sibford Gower, Sibford
Ferris and Burdrop

The Prices for 1 year (10 issues) are:

Full page 125mm x 185mm £ 110

1/2 page 125mm x 90mm £ 65

1/4 page 60mm x 90mm £ 35

1/8 page 60mm x 40mm £ 20

Price for colour or a single issue on application to Oonagh O'Neil

You can pay for ads directly into our account:

Sort Code: 60 01 35 Acct 52612236



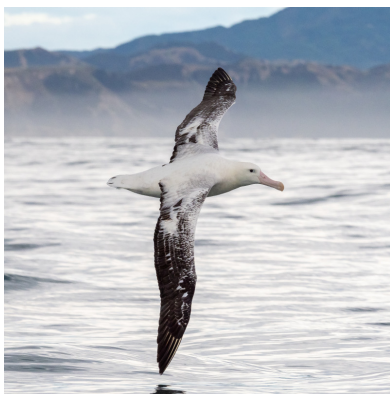
SIBFORD PHOTOGRAPHY CLUB

At our meeting on 28th March, we looked at photos from the first six days of my holiday earlier that month to the Southern islands of New Zealand. At our meeting on 25th April, I showed the next instalment of photographs from this trip, covering the section from Blenheim in the North-East of South Island across to the West coast and travelling down that side of the country, with visits to vineyards, waterfalls, a glacier and pancake rocks! We also viewed our members' images on the monthly topic of 'Weather', with photographs that made the most of April's changeable conditions, as well as some excellent shots taken at other times of the year.

Sibford Photography Club is a friendly, informal group with a shared interest in photography. Activities include instructive presentations and regular photo topics with the resulting images presented and discussed at meetings (face to face or virtual).

In addition to our regular meetings, we also arrange outdoor photoshoots at local nature reserves and other places of interest.

We would like to welcome more members to the club, so if you are interested in joining, please contact Colin Lamb at colinlamb.cl@gmail.com or phone 01295 780357.



64 Gibson's wandering albatross in flight



Sea Bea Transport Ltd.

U.K. & EUROPEAN TRANSPORT CONTRACTORS

Hay and Straw Merchants

Sugarswell Farm, Shenington, Banbury, Oxon, OX15 6HW

Telephone: (01295) 680204 & 680741 Fax: (01295) 680657

E-mail: seabeatransport@btopenworld.com



HGV DRIVERS AND HGV MAINTENANCE TECHNICIAN WANTED

We are a family run haulage company based in Shenington. William And Constance Barton first started the business in 1961 in Sibford Gower. We pride ourselves of provided the highest level of service to our customers. We operate a mixed fleet from vans up to artics.

We are looking for drivers who hold a class 2 upwards. Must hold a valid CPC.

We are also looking for a HGV maintenance technician to work within our onsite workshop. The job entails carrying out any repairs that are need to our fleet and carrying out maintenance inspections at regular intervals inline with the guidelines.

For further information, please contact Ronnie Barton on 01295 680204 or seabeatransport@btinternet.com



NATURE NOTES

Colin Lamb reported seeing the first of this year's butterflies on 30th March. The three species he saw in the garden were Comma, Peacock and Brimstone. These earliest butterflies to appear are ones that have hibernated as adults. Any time now newly emerged Orange-tips and Holly Blues should be around.

He also commented that Snake's Head Fritillaries and Ransoms were coming into bloom.

A couple of weeks later I have noticed that Colt's-foot and Celandines are starting to flower in the road-side verges.

A Sparrow Hawk has started to visit our garden again and managed to catch a Blackbird. I'm sure it will move on once the smaller birds that it preys on become more alert.

Over the early part of the Easter weekend when it was warm and sunny with a light breeze, I decided to try out my Emperor moth lure. These lures contain a mixture of chemicals that mimic the pheromones produced by the female moths to attract males. Much to my surprise a male Emperor moth did turn up! These are among the most spectacular of the British moths and the only members of the Silkworm family to occur in the UK. The males are day flying. The females don't fly much and wait for the males to find them.

Please send any contributions for the next Nature Notes to ajnewbold88@gmail.com.

Andy and Gill Newbold.



Emperor Moth



SIBFORD BUS SERVICE

Bus 75 - Timetable from 25 July 2022

Leave Sibford Ferris to Banbury: 06:56, 08:37, 11:09, 13:59, 17:31 (Sat only)

Leave from Banbury for Sibford: 11:35 (Sat), 11:40 (Mon-Fri), 14:35, 17:40

Leave Sibford Ferris to Stratford: 11:58 (Sat), 12:02 (Mon-Fri), 14:53, 17:58

Leave from Stratford for Sibford: 06:02, 07:30 (Mon-Fri), 07:54 (Sat)
10:15, 13:15, 16:38 (Sat only)

No service on Sundays or Bank Holidays.

Oil and Watercolour classes

Learn the basics in a friendly
informal class with easy to follow
demonstrations

OIL PAINTING -

Sibford Village Hall

(Friday's 9.30 - 12.30 weekly)

Shutford Village Hall

(Saturday's 9.30 - 12.30 monthly)

WATERCOLOUR -

Sibford Village Hall

(Friday's 1.30 - 3.30 - weekly)

nvfletcher@btinternet.com

www.nigelfletcher.co.uk

07792 657 248



HORTI SOCIETY

Despite cold blustery weather, a good number of members turned out to our first meeting of the year to hear Simon Gulliver talk to us on Colour in the Garden. Clearly an immensely knowledgeable, passionate gardener, he gave us a thought provoking talk and reminded us that green is also a colour – although he might not have carried all of us along with him in his passion for conifers.

May is a busy month horticulturally: Sue and Malcolm Bannister will be hosting a **PLANT SALE AT CARTER'S YARD on 13 MAY FROM 10.00am to 1.00pm.** If you can't make the 13th, Sue is happy to welcome you at other times. Please contact her on 01295 780365 to arrange a mutually convenient alternative.

THE HORTICULTURAL SPRING SHOW will be taking place on **Saturday May 20th at the village hall from 2.30-4.00pm.**

Entry night: Village Hall Wednesday 17th May, 7.00-8.00pm HAVE A GO! We want lots of entries! If your Sibford Scene didn't contain a show schedule, you can pick up a copy at Green's Post Office.

Looking ahead, on **14th June**, we have our **ALL DAY TRIP TO WISLEY RHS GARDEN. TICKETS** including Wisley entry are **£12.00 members, £17.50 non-members.**

Departing the village hall at 9.45 sharp. I don't need to tell you that this represents fabulous value for money with entry to Wisley alone costing £16.50. This is a subsidised event and is likely to be very popular. So please make bookings via diana_thompson@btinternet.com by **May 15th.** After this date, it will be made available to 2 other local Horti societies so bag a place now! And I hope that by the time you read this the weather will have warmed considerably and you are impelled into the garden with trowel and secateurs!

PLANT SALE

If unable to come on the day, please contact Sue on sebannister@gmail.com or 01295 780365 and arrange to come at a mutually convenient time. Sue is not able to take card payments but is happy to receive cash or a bank transfer. As usual she has a wide range of perennials and shrubs for sale in aid of the Sibford's Horticultural Society and the National Gardens Scheme.

Diana Thompson

SUNEDAY SMALLHOLDING

Fantastic news this month.

Goose eggs were due on 11th April. It was during the following day that Charlie, the gander alerted me to the fact that something was happening in the nest. He spent most of his time in the shed standing right next to a very patient Ruby Goose. On 13th the first fluffy yellow gosling was spotted. It was an immense feeling of relief that this young goose who had sat solidly for 28 days, had received her reward. Charlie became a proud and ferocious father and I have the bruises to prove it! When I had counted 3 chicks, I was very satisfied as she had been sitting on 4 eggs. However, I was soon to be shocked when the fifth gosling appeared...! So, what's the future for these adorable little creatures? Yes...let me know if you would like a special Christmas lunch... or know somebody who would like to start a flock or have a guard goose/lawnmower!



Much success also with the Hebrideans. Fourteen year old Debra was first to lamb, producing the single lamb as hoped. If you pass the field, this is the largest of all the lambs. Eight more lambs have arrived; another single, 2 sets of twins and a group of triplets, reaching the target total of 9. These lambs will stay with their mothers all summer, then move over to the field by the school for most of the following year.

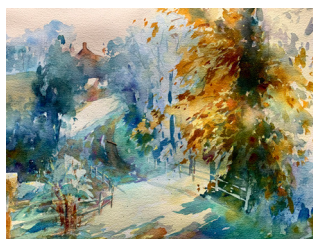
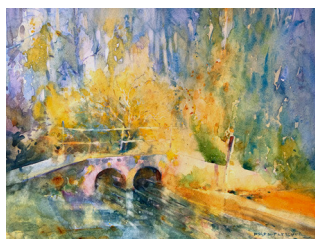
Sophie goat will be next. Fingers are anxiously crossed in anticipation of a safe arrival of a kid (or two), around the middle of May. My task during the next week is to clean out their shed. This is a 'deep litter' bedding system – easy for most of the year, then incredibly hard muscle building work for a couple of days. The muck that comes out will then be the bed for this year's pumpkins!

I will begin milking Sophie again at some point over the summer. I will make yogurt and cheese, mainly just enough for me but please let me know if you would like some goat milk on a regular basis.

Open Day 2nd Sept. A celebration of self-sufficiency. If you make 'stuff' instead of buy it, why not grab a space at the open day and share it with everyone.

Sue 07891 249526

Spring Painting Exhibition



13th to 29th May - 10am to 6pm
Swalcliffe Village Hall

A large exhibition of colourful new paintings!
www.nigelfletcher.co.uk nvfletcher@btinternet.com



FUN CORNER

Since youngsters of today have their texting codes [LOL, OMG, TTYL, etc] the oldies decided not to be outdone by these kids, and now have developed their own codes.

ATD- at the doctors
BFF- best friends funeral
BTW- bring the wheelchair
BYOT- bring your own teeth
FWIW- forgot where I was
GGPBL- gotta go, pacemaker battery low
GHA- got heartburn again
TFT- texting from toilet



HOLY TRINITY CHURCH CHATTER

Sunday services in May at Holy Trinity church

Sunday 7th May

12.15pm A special service to celebrate the Coronation of King Charles III

Sunday 14th May

8am Holy Communion (Book of Common Prayer)

10am Christian Aid service

Sunday 21st May

9.30am Holy Communion,

Sunday 28th May

9.30am Holy Communion

CHRISTIAN AID WEEK 14-20 May

Donation envelopes will be delivered to homes in the Sibfords a few days before the 14th May. These are DELIVERY ONLY, your donation can be left at the Post Office, the Rectory or one of the other collection points around the area, A Christian Aid On-line Giving envelope is being set up as an alternative way to donate.

Coronations – History and Sibford Connections

As part of the celebrations for the Coronation of King Charles III there will be a display in Holy Trinity Church showing items of historical interest to include some Sibfordian connections with former Coronations. Please pop in while the church is open from Thursday 4th May to see how Sibford people have been involved in former coronation celebrations.

With lighter evenings and warmer weather, it's time to ditch the weekends stuck inside and get back to enjoying the outdoors. We have plenty of ways that you can support our hospice while getting some fresh air. We couldn't keep supporting local people without your help. Thank you!

An evening of stars!

Don't miss out on your chance to sign up for our movie-themed Moonlight Walk! Join with friends and family for a fun-filled six-mile or ten-mile walk under the stars on Saturday 20 May. Dress to impress and walk with hundreds of local people through the moonlit streets of Banbury to help raise vital funds for our hospice. Sign up to secure your tickets now: www.khh.org.uk/moonlight

Rose to Remember

There's still time to be part of our new Rose to Remember event this June! By purchasing a hand-crafted metal rose you can remember a loved one and pay tribute to the life and memory of someone special. The roses will be part of a stunning temporary installation, hosted by our friends at Sulgrave Manor, from Monday 5 June until Sunday 18 June, before they are taken home to keep. To find out how you can purchase a rose and be part of this special event, visit: www.khh.org.uk/rose-remember

Dig deep for a good cause

If you love spending time in the great outdoors, then don't miss out on our Open Garden events throughout the spring and summer months. We have some fabulous villages taking part, as well as some private tours and events with limited availability. You can find the full list of our Open Gardens on our website. www.khh.org.uk/gardens

Can you make a difference?

We are looking for volunteers with excellent communication and presentation skills who are also enthusiastic, friendly and approachable. If that sounds like you, then our exciting new Community Ambassador role could be right up your street. You will work alongside our super friendly fundraising team within the local community. Full training and ongoing support will be provided. Interested? Find out more here: www.khh.org.uk/community-ambassador



CALENDAR OF EVENTS

MAY

- 3rd - Ladies Coffee Club - Wykhan Arms - 11am
- 5th - Mens Brunch - Sun Inn - 1130am
- 7th - Coronation Street Party (and more!) - Acre Ditch - 1.30pm
- 9th - Friendship Club - Village Hall - 2pm
- 11th - CPR training - Village Hall - 6.30pm
- 13th - Book Swap Cafe - Village Hall - 10am
- 13th - Plant Sale - Carter's Yard - 10am
- 18th - Sibfords History Society - Village Hall - 7.30pm
- 20th - Horti Club Spring Show - Village Hall - 8am
- 25th - Film Night - Village Hall - 7pm
- 30th - Sibford Photography Club - Village Hall - 7.30pm

MAY BIN COLLECTIONS

- Green Tuesday: 9th; 23rd
- Blue/Brown Tuesday: 2nd; 16th; 30th

Unwanted clothing and shoes may be recycled anytime at the Textiles/ Recycling Bank at Sibford School Swimming Pool. Bottle banks at Sibford Ferris: Elm crossroads and Sibford Gower: Wykham Arms car park.

SIBFORD SCENE DEADLINE FOR JUNE ISSUE - 12 NOON - 18th MAY 2023

Editor: Tony Skowronski, Jasmine Cottage, Burdrop, OX15 5RN
T: 01295 780490
E: sibfordscene@gmail.com

Ad Manager & Treasurer: Oonagh O'Neill Garnham
Folly Cottage, Main Street, Sibford Ferris. OX15 5RG
T: 01295 788160. Mob: 07717 723919
E: Advertsibfordscene@gmail.com



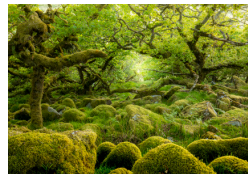
PHOTOGRAPHY EXHIBITION

Drop in to view a selection of landscape
and wildlife images by award-winning
photographer William Gray

“For this year’s ArtWeeks, I’ll be exhibiting some of my favourite images from the Cotswolds, along with a selection of Cornish seascapes and Lake District landscapes. As well as framed and canvas prints, there will be limited edition giclée fine art prints and cards for sale. You can also find out about my photography workshops in the UK, Iceland and Namibia. Please do drop in for a chat – there will be a pop-up café in the garden!”



13-21 May 2023 11am-6pm (8pm Thu/Fri), Sun 10am-4pm
The Garden Studio at Barnes Cottage, Sibford Gower
Off the footpath between Main Street and Backside Lane



www.william-gray.co.uk   [@willgrayphotography](https://www.facebook.com/willgrayphotography)



R. Locke & Son

Independent Family Funeral Directors – Est 1853

Cauton Corner

BRAILES

OX15 5AZ

t: (01608) 685274

Southam Street

KINETON

CV35 0JN

t: (01926) 640386

No. 6 The Precinct

WELLESBOURNE

CV35 9NL

t: (01789) 840744



For more information about our services,
to view our funeral announcements
and online donations, please visit

www.rlockeandson.co.uk

As a family owned business serving our local
area, we take great pride in offering a
dedicated and compassionate service.

Golden Charter
Funeral Plans



Celebrating 70 Years

1952-2022

The Forge Garage (Brailes) Ltd

Your local, family-run garage.

MOT's, Servicing, Air Conditioning, Diagnostics and In-Depth Repair Work

Pump attended fuel station also selling Calor gas, kindling, coal, BBQ coal
We're here to help so please contact us today on 01608 685247 if you have any questions
about your vehicle, or for a free no-obligation quote.



<https://www.theforgegarage.co.uk/>

Telephone: 01608 685247;

Email: enquiries@theforgegarage.co.uk

