

SIBFORD SCENE

APRIL 2022

Number 442





Venue 433

Local artists Ginny Bennett, Sue Levitch and Rosie Wells will be using Cherington Hall for their exhibition from May 21st until 29th from 11am to 4pm daily.

We will have a wide variety of subjects, in oil painting and acrylics.

The`Hall` at Cherington has good parking and disabled access.

Refreshments will be available and a selection of cards printed from the art work will be on sale.

Do come and visit us .



ED'S THOUGHTS

Two or three articles about Ukrainian refugees this month. I just think we're all very lucky here in Sibford and sometimes I get very worried about rising energy and petrol price costs and then I think "Woah!, at least I have a home to live in." Please give generously to any charity supporting these desperate people.....

Cover painting by Michael Spring: "In the Medina, Morocco"

Thought for the month:

"All we are saying, is give peace a chance"

John Lennon



LETTERS AND NOTICES

VILLAGE HALL LOTTERY!!

March Winners:

1st prize - £70 Kathleen Winter
2nd prize - £42 Anita Spencer
3rd prize - £28 Nicky Sena Cullen

Pound Lane and Colony Road down to Temple Mill will be closed to through traffic from **Wednesday 6 April for three days** "whilst cabling and blockage clearing works are carried out".

CHARITY FAMILY QUIZ NIGHT

James and Cicely Glazebrook are joining forces to run a charity family quiz night on Saturday June 18th at the village hall to raise funds for African communities and projects they'll be working with next year through Camp Kenya. More details in next months Sibford Scene, or for more information call Tracey on 07774 211044.



LETTERS AND NOTICES

Dear AA

Thank you so much for your kind note about CPR training. The Parish Council aims to try to offer training to the whole village eventually and will certainly continue to have slots in the village hall. It is wonderful that St John Ambulance give their time and energy gratis

John Wass.

ENSEMBLE BURLETTA



This month we had a wonderful musical afternoon soirée with the Ensemble Burletta , playing the finest music for clarinet and strings we heard different pieces from several composers. It was magical. Our Burdrop representative from the ensemble is Cressida Nash so we are very lucky to have come and perform. They are now available for bespoke concerts for all occasions many styles of music.

Fiona Steane

POLLY

Thanks to all those who have faithfully continued to support Polly in her mission to look after the most vulnerable Banbury residents. If you have any food donations, the place to put them is just outside the church in the basket provided. We are hoping that this month we might be able to give a small treat in the form of an Easter egg to each of her most regular 15 clients.

It doesn't need to be expensive. It's the thought that counts!

Diana Thompson

UKRAINIAN REFUGEE FAMILIES

If anyone in the Sibfords is interested in becoming a host to Ukrainian refugee families Revd Neil Rector is co-ordinating local interest and will pass on any information about local support groups and latest updates. Tel Neil on 78005 or email: revneil@wykehambenefice.org.uk



VILLAGE HALL NEWS

Village Hall News

The Annual Easter Egg Hunt Returns! Friday 15th April (Good Friday) 2-5pm

- Hunts for older and younger children – everyone gets a prize!
- Refreshments and cake available

Birmingham Symphonic Winds Concert, Leasowe House, Sibford Gower, Saturday June 25th

- We are excited to share that we are in the early stage of planning another amazing event, in collaboration with Keith Allen and the Birmingham Symphonic Winds. Please bookmark **June 25th** in your diaries and watch this space!

Book Swap Saturdays: 10am – 12pm April 23, May 14, June 18

- Books for all ages and genres at this popular event.
- Come and have a drink and a chat in the Small Hall. Teas and coffees available
- It's free to borrow books but donations welcome towards the Village Hall Roof fund.

Village Hall Website

- Please visit our website www.sibfordvillagehall.org.uk to request a booking. We have preferential rates for village residents, only £10/hr (one hall); and £18/hr (both halls). Please use us for your next birthday party or community gathering.

Village Hall Committee and Friends Group

- The Friends Group is run by Joan Broady and has been formed to support the Committee in holding events and looking after the Hall. If you have a little time and are looking for ways to be more involved in the village, we would love you to join us. Please contact Joan on 780410 or joanfbroady@gmail.com



VILLAGE HALL NEWS

Cont'd

Hall Hire and Heating

- If you are hiring the Hall and need to adjust the temperature, please check the thermostat first (next to the stage) before adjusting the radiators. When leaving, please reset the thermostat to 18°C and radiators to between 3 and 4. This way we can keep the Hall cosy for everyone this winter. There is a stall in the kitchen if needed to get a better view of the thermostat.
- Please continue to prioritise hand washing and sanitising, keeping space around you and opening windows to improve ventilation. It's also a good idea to chat with friends after an event by moving outside into the open air!



 Oil Boiler Servicing

 Oil Aga Servicing

 New Oil Boiler Installations

Hook Norton 01608 738156

Emergency Breakdowns: 07973 128987



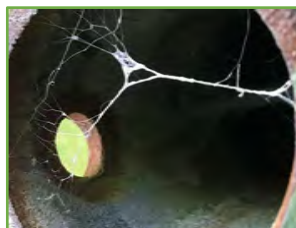
There has been quite a GREEN theme evident across the school in recent weeks. In Science lessons there has been a focus on 'growth' which is very well-supported by our wonderful site and local environs. The children have been able to see green shoots appearing across the site, including those from bulbs they planted in one of the raised beds in the Old School playground.

A group of our older children have been working with Rob from the Oxford United in the Community team to tidy up our 'allotment' area too. This was the children's choice of a project they could carry out to improve our school site. The area needed a bit of work as it had become slightly neglected during the pandemic.

Thanks to Rob and his pupil team, it is beginning to look lovely again. The next step is to repaint the outdoor wooden furniture with some 'mindful' colours to smarten them up.

We have signed up for the Tower of London Superbloom project. To mark the Queen's Platinum Jubilee, 20 million carefully selected seeds will be sown in the Tower's famous moat, 'creating a vibrant sea of flowers which will continuously evolve from June to September, changing colours and patterns throughout the summer'. Our packs of seeds have just arrived and we will be scattering these within areas of the school site to create a linked display here, if on a much smaller scale!

Aimee White in Oak Class spent some of her playtime taking photographs of nature around the playground. She has captured the texture of the bark on our oak tree, the contours of the daffodils and the strength of a spider's web. Well done, Aimee!



Mrs Williams, one of our three qualified Forest School practitioners, has been liaising with our friends at Sibford School about a tree planting project on our site. Last year we planted hawthorn within some sections of the hedge to in-fill some gaps. This month, Harry Wragg from Sibford School is visiting to do a tree planting event in a corner of our Big Field with children from Willow Class (Thank you Harry!) Our plan is that each child will be able to plant one of a choice of trees including Rowan, Silver Birch, Cherry and Hazel.

We are exploring growth in animals too, and studying habitats. Thanks to a phone call from ex-governor Fred Inns, many of our children walked down to take a look at the Village Pond and it's workings while the pond was drained. This half-term they have been able to take a walk down and clearly see frogspawn by the pond plants to support their life-cycle lessons at school – all made more interesting because they understand what it looks like beneath the water. (Thank you Fred!)

Green cropped up in a different context too, with a special assembly on St Patrick's Day led by Beech Class teacher, Miss Niamh Keogh. The children learned about the legend of St Patrick, with pupils taking on different roles to act this out, they learned some words in Gaelic, performed some Irish dancing and learned a traditional children's song involving bogs and trees and nests and fleas. Great Fun!

To find out more about our wonderful, welcoming village school and nursery for children from 3+, and the things that are going on in each class, please take some time to visit our school website at

<http://www.sibford-gower.oxon.sch.uk/>



Sea Bea Transport Ltd.

U.K. & EUROPEAN TRANSPORT CONTRACTORS

Hay and Straw Merchants



Sugarswell Farm, Shenington, Banbury, Oxon, OX15 6HW
Telephone: (01295) 680204 & 680741 Fax: (01295) 680657
E-mail: seabeatransport@btopenworld.com

HGV DRIVERS AND HGV MAINTENANCE TECHNICIAN WANTED

We are a family run haulage company based in Shenington. William And Constance Barton first started the business in 1961 in Sibford Gower. We pride ourselves of provided the highest level of service to our customers. We operate a mixed fleet from vans up to artics.

We are looking for drivers who hold a class 2 upwards. Must hold a valid CPC.

We are also looking for a HGV maintenance technician to work within our onsite workshop. The job entails carrying out any repairs that are need to our fleet and carrying out maintenance inspections at regular intervals inline with the guidelines.

For further information, please contact Ronnie Barton on 01295 680204 or seabeatransport@btinternet.com

Explore Sibford School at Open Events in 2022

Don't miss your chance to attend a Sibford School open event in 2022. All other Autumn open events were fully booked so book your place today to join us in the new year.

Sibford School is offering whole school open mornings on Friday 4 March and Friday 29 April, as well as a Sixth Form open evening on Thursday 17 February.

These events will offer the opportunity to talk to staff, meet current parents and take a tour of the school with student guides.

Toby explains 'At Sibford we value holistic education where the happiness and well-being of pupils is paramount. We encourage pupils to live adventurously, and foster resilience and we look for the unique talents in every individual that comes to the school.'

'If you are interested in entry for September 2022 and beyond or perhaps for immediate entry, we encourage you to come along and learn more about what we offer here at Sibford.'

Sibford School is a co-educational independent day and boarding school set on a 50-acre campus that offers a junior school, senior school and separate Sixth Form, as well as its own forest school, a state-of-the-art climbing wall and 25 metre swimming pool.

The school offers a gifted and talented programme for the most able pupils, a wide range of sporting opportunities and an excellent support for learning department to support those students with additional learning requirements. Scholarships and bursaries are also available.

Don't miss out and book your place today online at www.sibfordschool.co.uk/events, or call Elspeth Dyer, Admissions Officer on **01295 781 203**.



Sibford Ferris Parish Council

Sibford Ferris Annual Litter Pick 2022

This year there will be not be a formally organised collection of litter through the village or on the approach roads. We would like to encourage residents young and old to continue to pickup and dispose of litter when they are out and about in the community. We are very grateful to a small band of individuals that regularly collect litter almost daily and it would be fantastic for the rest of the community to support this. As always personal safety is paramount, particularly when collecting litter on approach roads to the village and where footpaths do not exist. We recommend that litter pickers wear high visibility items of clothing and obey the Highway Code at all times. Collected litter should be disposed of using home domestic refuse services provided by Cherwell District Council.



4th Corner Landscaping

are recruiting now

Join a friendly family run company supplying grounds and soft landscaping services across the region

We have part time, seasonal, full time, and apprenticeship roles available with good rates of pay

Full training provided with good career progression

**Call: 01295 817628 or
email: hr@4thcorner.co.uk**

*Supplier of landscaping services to Banbury Town Council,
Taylor Wimpey, Lioncourt Homes, Guinness, Orbit,
Redrow, PA Housing and many more*

**See our website for more information:
www.4thcorner.co.uk**

Stay in style in the Sibfords

Sumptuous self-catering

Newly refurbished self-catering accommodation set in stunning private gardens with heated swimming pool, tennis court and croquet lawn. 4 beds, 5 bathrooms. Sleeps 8 (plus 4 in the main house for larger groups).

Private dinners also catered for up to 16 guests.

Contact Sally Wass
T: 01295 780104
E: sally.wass@btinternet.com
www.holmbyhouse.com

Holmby House



NATURE NOTES

Megan Gilkes reported seeing a Woodcock during the very windy Friday we had back in February. It was being blown about in the wind and only just able to control itself. It flew over the wall of the Manor and then on over the roof of Home Close. She was able to catch a fleeting glimpse of it's distinctive beak and short body.

Megan also asked me if I knew why some frog tadpoles did not develop into young frogs but remained as tadpoles over the winter. A bit of internet research suggested that this might occur if the pond was cold due to shading or the pond lacked shallow areas where the water warmed up more quickly in sunny weather. Lack of food was also suggested as a possible reason. Tadpoles can be fed with small amounts of Spinach which has been frozen first to help break down the cells. I remember that in the past I used to hang small pieces of liver on a piece of string in the pond and tadpoles would feed on that. The liver should be removed before it becomes smelly. Maybe spinach is the better option!

As I am writing this, I have just seen my first Brimstone butterfly of the year flying through the garden and both bumble and honey bees are active around the apricot blossoms and other early flowers.

Please send contributions for the next Nature Notes to ajnewbold88@gmail.com

Andy and Gill Newbold

CHURCH SERVICES

Quakers	Sibford Gower, Sunday, 10.30 am
Roman Catholic	Brailles, Saturday, 5pm; Shipston, Sunday 9am
	Kineton, Sunday 11am
Baptist	Hook Norton, Sunday, 10.30 am

**Do you need a helping hand to find
the mortgage that's right
for you?**



If you are looking for Independent
Financial Advice... I'm here to help



SCR Financial

Call Sue for a free telephone consultation

01295788475

sue@scrfinancial.co.uk

www.scrfinancial.co.uk

Authorised and regulated by the Financial Conduct Authority FCA# 959557

- **Bespoke bathrooms, kitchens and carpentry**
- **Fitted furniture**
- **Plumbing and electrical works**
- **Home improvements and renovations**

**Hugo
Seely**

Trading in the Stirlings since 1992

From concept to completion
*Exceptional value,
exceptional service*

T: **01295 780355**

or **07773 319239**

E: **hugo.seely@gmail.com**

Excellent references



POP UP TABLETOP PLANT & HOME PRODUCE STALLS

**Saturday 30th APRIL
Monday 2nd MAY**

**Gardeners - please sow now ready to
donate plants**

PLANTS & PRODUCE WANTED PLEASE

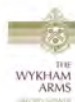
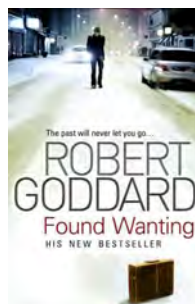
**Please see our website for a list of stall locations
at www.shipstonhomenursing.co.uk/events**

**For details of how to donate or volunteer to host your own stall -
please contact Rebecca Mawle on 01608 674929**

Fudge Ramsay 01608 680000 or Caroline Gunn 01608 663508



WHAT WE'RE READING.....



The Wykham Arms

We're now open inside and outside! and for takeaway, too

Homemade Desserts

Bespoke special occasions catered for including anniversaries & birthdays

Weekly Specials

Please tel **01295 788808** or email info@wykhamarms.co.uk to book or for more information



The Wykham Arms



@wykhamarms

THE VILLAGE SHOP HOOK NORTON

National Lottery

Grocery - Greengrocery - Bakery - Wines
Spirits - Confectionary - Newspapers
Magazines - Cards - Bottled Gas

Open Monday to Friday

8 a.m to 8 pm

Saturday 8 am to 8 pm

Sunday 8 am to 6 pm

Telephone: 01608 737245

Please note: On Sunday, we open at 9am

RICHARD WALLINGTON BUILDER

Block paver drives a speciality
Also extensions, patios
fencing etc.

High Quality Work - Free Estimates

T 01295 780705

Mobile 07743 932545

(Sibford Gower)



SIBFORDS WALKING GROUP

WALKING DATES

4th April; 25 April (please note 3-week gap because of Easter); 9th May; 23rd May

We leave the village hall on foot or by car at 10 am sharp to do a circuit of approximately 2 hours. You are advised therefore, to get to the village hall by 9.55 am latest.

Dogs are welcome provided they are put on the lead when requested. Walking boots and poles are recommended but not compulsory. Some routes include stiles. If you would prefer a shorter walk, please contact Sue to discuss as it is sometimes possible to leave a car about halfway, so the less energetic may drop off and drive home. At the village hall, please park either on the road or on the grass field beyond the tarmac.

Please don't hesitate to ring me on 01295 780365 or email sebannister@gmail.com if you have any queries.

Sue Bannister

FOOTPATHS

Ian Sharp, ian@iansharp.net, Lamb's Croft, Back Lane, Sibford Ferris, OX15 5RE. Tel. 01295 780790, is the footpaths warden and anyone who has a problem or complaint should contact him.

LETTERCARVE

Hand-carved, hardwood signs for the home and workplace.

Personalised boards and platters, stable plates and memorials.

#MadeInSibford

Browse the website:

www.lettercarve.com

e: lettercarve@gmail.com



C. A. Berger

Painting & Decorating
Interiors & Exteriors
Residential & Commercial
Carpentry Repairs
and
Property Maintenance

Mobile: 07875 212 315
Office Tel/Fax:
01295 738633



**BESPOKE DESIGN SERVICE FOR
CUSTOM MADE FURNISHINGS**

**Pattern book room for you
to browse fabric designs**
Curtains, blinds & cushions
Loose covers & lampshade making
Headboards & bedspreads
Curtain poles & tracks
New sofas & chairs & reupholstery

01295 788145
ann@annwoolgrove.com | www.yarnhill.co.uk
www.annwoolgrove.com

PILATES IN SIBFORD
On-line classes and private tuition available

Madeleine Wilson M.Sc, Mat & Studio Master Teacher Offers
Bespoke One to One and Duet sessions

Training on Specialised Pilates Equipment
Reformers, Chairs, Barrels & Cadillac

Small Group Matwork Classes
For all Levels from Beginners to Advanced

Tel: 01295 78027 **Mob: 07905 953300**
email:madeleine@pilatesinsibford.co.uk
www.pilatesinsibford.co.uk

WELCOME TO SIBFORD

If you are new to the Sibfords and would like any advice on our village, please call Ivor Hopkyns on T: 788367 (Gower & Burdrop) or Nic Durrant T: 788865 (Ferris). We are lucky enough to have a really great village website at: thesibfords.org.uk



FUN CORNER

They say every piece of chocolate eaten shortens your life by 2 minutes. I've done the maths. Seems like I died in 1537 .

.....

I got myself a seniors' G P S. Not only does it tell me how to get to my destination, it tells me why I wanted to go there.

Bryony Franklin

Holiday Cottage in Cornwall

On the beautiful north coast in Poldark country, character cottage set in a large south-facing enclosed garden, is available for holiday lets. It is situated on the outskirts of the vibrant and friendly village of St Agnes.

Scrumbles Hollow sleeps six in three double bedrooms, one with ensuite shower room, plus a family bathroom. Full central heating.

The spacious cottage has an open fire place in a cosy sitting room, while the dining room boasts a log burner. New, fully equipped kitchen and separate utility room for sorting out sportswear after a day on the beach or walking the breathtaking countryside.

Lots of good local pubs and restaurants, shops and galleries. Excellent public transport connections, including Newquay airport (half an hour by car).

For more information, please contact Linda on 01295 780 242 or 07973 226 032 or lindalaneyolo@gmail.com.



In Your Garden - March

Spring! I thought it might never come, but today I have eaten lunch outside, in the sun, and for a good few weeks now the dawn chorus has been rapturous - almost as good as Wagner - and there is a promise and hope in everything shooting up in the flowerbeds.

The grim and terrible things in the world are bound to change our lovely, peaceful and rural lifestyle, and we are told that food prices will rocket, so, I suggest.....

1. We concentrate a bit more on growing our veggies. The ground is warming up, so planting can start right away for carrots, leeks, spinach and chard, beetroot, and of course potatoes. At the end of the month plant lettuce, runner and french beans, courgettes and squash, peas. Tomatoes in pots in the greenhouse. I have stopped doing brassicas because the bloomin' pigeons peck them to bits.
2. Pansies and violas have been blooming on and off all winter in pots in my porch; they need feeding and deadheading to keep them going, but makes cheerful entrance to the house, together with the lovely sarcococca bush that wafts scent everywhere.
3. Summer and autumn flowering bulbs have just arrived, in a great bit box full of joy - so a very busy week getting them all planted. If you haven't tried Acidantheras before they are worth it. Delicate white blooms that last for weeks. I shove plenty of them into a large pot or two - they don't seem to mind being a bit crowded. Colchicums, Nerines and Sternbergias are all old favourites of mine.
4. A large magnolia tree is just showing the first pink buds, and underneath it is my spring garden. It is full of sunlight before the tree leafs up, and very dark after that. But right now it is gloriously packed with little daffodils (tete-a-tetes), blue anemones, snowdrops, crocus, primroses, and loads of hellebores. So if you have a shady patch in summer, that gets all the sun in winter, a spring garden is well worth thinking about.
5. Taking a little posy of flowers to a friend when you drop in for tea, or coffee, or drinkies, is always appreciated.. You can start sowing annuals in your picking border towards the end of the month, or inside, if you have a greenhouse. Beware the mouse in the greenhouse. They have nibbled and scabbled up my sweet peas again. From now on, I shall grow them in my very sunny bathroom window..(and hope I can get them into the garden before they climb up my toothbrush.)



In Your Garden - March

6. I meant to write more about veggies, but dahlias need attention if you wintered some of them inside. Fill a large container with dry compost, and plant the tubers fairly shallowly. Do not water until the first sign of growth, then gently give them a drink. Too much wet compost can make them go rotten. Keep them inside, preferably under the staging or in a light frost proof shed. I left my whopping great big tall dahlias in the ground over winter, covered with heaps of mulch - so fingers crossed they have survived again.

7. The lawn must have some TLC right now, and everything always looks smarter when the edges are neatly cut.

8. Clematis and roses are growing fast , so keep tying in new stems before they go astray.

9. Brush off your garden seats, place them in the sun, sit down and enjoy your garden. That,s a must. Spend as much time as you can out there; hoovering and dusting can wait. Being close to nature is the healthiest and most calming place to be at the moment. And relax. Breathe.....
Jupe Hitching

Sea Bea Transport LTD

ADR
Flat Beds
Low Loaders



Vans
Tail Lifts
24/7

Sugarswell Farm | Shenington | Banbury | OX15 6HW



HORTI SOCIETY

Our first Horti speaker of the year found himself trapped in Australia and unable to deliver his talk due to Covid, so Victoria Logue stepped into the breach at the last moment and very kindly spoke to us on Extending The Seasons. It was a useful reminder that anyone can make a garden look beautiful in summer, the clever trick is to extend the interest from spring to autumn and through the winter as well. She gave us lots of good ideas and gardening tips.

The meeting was very well attended so a big thank you to everyone who turned out, despite it being the AGM and subscription renewal (!) Pauline Inns is retiring from The Show Committee at the end of the year after years of devoted service and we owe her a great debt of gratitude. Quite how we are going to manage without her indefatigable ability to launder and iron miles of table cloths or lend us original WW2 blackout material for displaying beans is a mystery. Ann Bishop is kindly going to attempt to replace her.

Our April speaker is Dr Richard Turner. They have released him from Australia and as long as none of his family comes down with Covid again, he is eager to talk to us on the subject of Propagating Exotic Plants. Details are:

April 13th. Village Hall 7.00 for a 7.30 start, refreshments served before the talk, non members always welcome.

Diana Thompson



SIBFORD PHOTOGRAPHY CLUB

Sibford Photography Club is an informal group with a shared interest in photography. Activities include instructive presentations and regular photo topics with the resulting images presented and discussed at meetings (face to face or virtual).

During March a small contingent from the club visited a couple of photography exhibitions. The first was held at a small gallery in Leamington Spa and featured the work of American photographer, Michael Grecco during the late 1970s and 1980s, showing the US punk rock scene. The second was [Focus] on Photography '22, an exhibition of work by photographers from this region at the Heseltine Gallery in Middleton Cheney. This featured a couple of images by club member Colin Lamb. It was great to get out with friends and see such a varied and eye-catching range of photographic images.



SIBFORD PHOTOGRAPHY CLUB

Cont'd

On Tuesday, 29th March, we enjoyed a session creating and photographing still life images illuminated by light painting. This technique uses long exposures meaning that a hand-held torch can be used to illuminate the specific parts of the image that you choose, to give the desired lighting effect. This was used to good effect by several of the members to achieve beautiful images.

This was followed by a review of the members' monthly topic images on the theme "Signs of Spring", with added considerations that there should be at least one image showing the subject in each of the following ways (not necessarily the same subject for each technique):

- in it's environment
- close-up
- in an unexpected way, from an unusual angle or in action

Members certainly gave thought to how they would tackle making their images with these added considerations, so there was much to talk about and some great images to look at.

Our monthly topic for April is "Inspired by..." with members asked to create images that have drawn their inspiration from works of art or literature. Inspiration might come from a poem, a book, a painting, a sculpture, a stained glass window, a photograph, or the image might be in the style of a particular artist or photographer, rather than inspired by a particular work. This should give plenty of scope for creativity.

At our meeting on Tuesday 26th April, we will have a session on assessing our images, in which we will discuss methods to evaluate images that might give you a basis for judging which are worth keeping, or which you might enter into a competition. We will then review members' monthly photo topic images with those thoughts fresh in our minds.

Sibford Photography Club also holds outdoor photoshoots, for example walking round nearby villages finding photo opportunities or visiting local nature reserves. In the future, we hope to put on a club exhibition. We would like to welcome more members to the club, so if you are interested in joining, please contact Colin Lamb at colinlamb.cl@gmail.com or phone 01295 780357

With the evenings getting lighter and signs of spring all around us, it's time to ditch the weekends stuck inside and get back to enjoying the outdoors. We have plenty of ways that you can support our hospice while getting some fresh air – from taking part in events to volunteering for one of our collections. We couldn't keep supporting local people without your help. Thank you!

Open Gardens return

We have an incredible seven dates for our Open Garden scheme running throughout the spring and summer – with more to come! A huge thank you to all our green-fingered supporters who are opening their gardens to help raise money for our hospice. If you're looking for some fun family days out in the months ahead then take a look at our Open Gardens page to find out more.

Out on the town!

We're always on the lookout for more volunteers for our street collections. Each collection slot lasts for 1.5 hours – so it's a great introduction to volunteering if it's something you've been thinking about. Find out how you can get involved on the volunteering page of our website.

Walk the walk

If you love nothing more than lacing up your walking boots and getting out to see the world then we have three new challenge events that will be right up your street.

- Cotswold Way Challenge - 25 June
- Thames Path Challenge - 10 September
- Halloween Walk - 29 October

So whether you fancy something beautifully scenic or a little bit spooky – we've got you covered! Find out about these challenges and more on our website.

Digital monthly newsletter – keep up to date with your hospice

Sign up to receive our Katharine House digital monthly newsletter, which is designed to keep you in touch with all our latest news and fundraising events at the hospice.

Find out more

Head to our website for more details, events and news: www.khh.org.uk.



SIBFORD HISTORICAL SOCIETY

The Society kicked off its 2022 programme, the first full programme since before Covid lockdown, on 17 March with a brief AGM (after a glass of wine) at which the present committee was re-elected. There are vacancies on the committee and Chairman Clive Warner invited anyone else interested in local history to consider joining this enthusiastic group.

The AGM was followed by Cathy Stoertz's fascinating investigation into a single aerial photograph of Moreton-in-Marsh taken on 27 May 1944. Drawing on other archive material, some of which she had discovered just a few days before the talk, Cathy showed how a huge influx of men and materiel from the USA had transformed the town and surrounding countryside for a short time as they prepared for the D-Day landings, 10 days later. One photo showed ammunition dumps beside the road up to what is now Wyatt's Farm Shop.

At our next meeting, on 21 April, Colin Hill of the Swalcliffe Society will talk about Swalcliffe's magnificent medieval barn, the finest barn in Oxfordshire. Do come and join us as we find out why it is here, who built it, when and how, and for what purpose, why it is so big and how it fits into Swalcliffe's medieval landscape. Colin will also explain the role of the Swalcliffe Society in connection with this fine barn and their interest in the general history and archaeology of the area.

Tim Huckvale

QUALITY FISH DIRECT
FROM GRIMSBY MARKET

Proprietor: Robert Hill

hill42804@gmail.com

07578 195979

Freshest fish and shellfish direct from Grimsby to Sibford. Now delivering directly to your home every Thursday from 3.45 - 4.15



MISS "T" CATERING.

Good Home Cooked Food

Catering for events such as:

Anniversaries, Weddings,

Christenings, Birthday parties,

Funerals & private dinner parties.



Also available

Cutlery and Crockery Hire.

Contact Victoria Taylor on:

Mob: 07841 910037

Home: 01295 780206

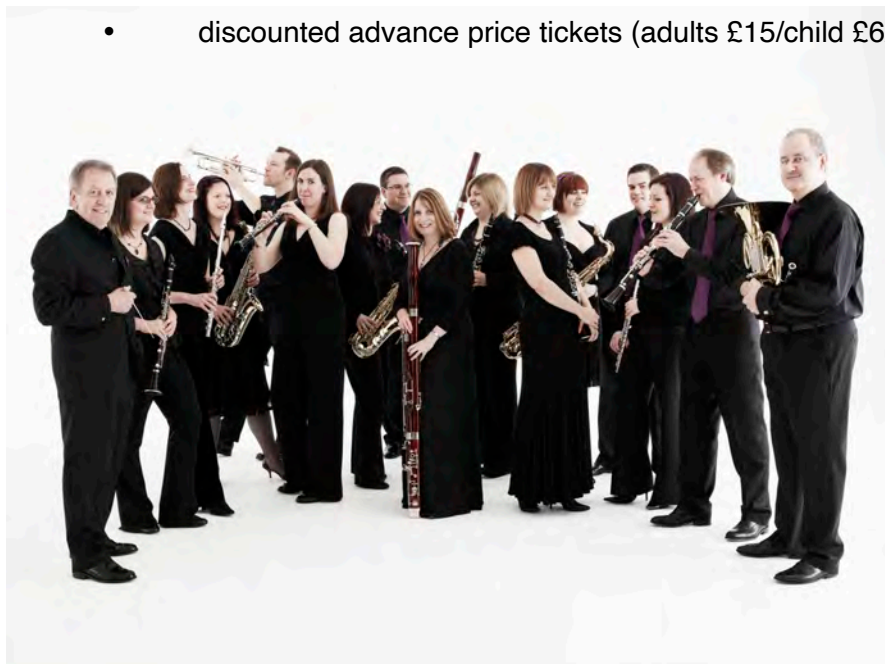
LIGHTS, CAMERA, ACTION!

is back this summer

- once again, set in the spacious gardens of **Leasowe House, Sibford Gower**, with its magnificent views across the valley
- the 40 piece award-winning orchestra **Birmingham Symphonic Winds** plus **Sibford Young Performers** and **Sibford Songbirds** will entertain with movie themes, drama and songs

6.00 pm on Saturday 25 June is the time & date for your diaries

- an occasion for the whole family (sorry, no dogs)
- refreshments, bar & BBQ
- grand raffle
- discounted advance price tickets (adults £15/child £6/





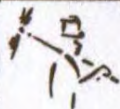
POET'S CORNER

Refugees

They have no need of our help
So do not tell me
These haggard faces could belong to you or me
Shu=ould life have dealt a different hand
We need to see them for who they really are
Chancers and scroungers
Layabouts and loungers
With bombs up their sleeves
Cut-throats and thieves
They are not
Welcome here
We should make them
Go back to where they came from
They cannot
Share our food
Share our homes
Share our countries
Instead let us
Build a wall to keep them out
It is not ok to say
These are people just like us
A place should only belong to those who are born there
Do not be so stupid to think that
The world can be looked at another way

(now read from bottom to top)

Brian Bilston



CHIMNEY SWEEP

Jonathan Perry

Guild of Master Chimney

Sweeps Qualified

**Open fires, Inglenooks,
Wood burners, Agas**

*All work certificated for
house insurance purposes*

For a clean, friendly and professional
service please contact me on:

Tel: 07557 058051 (Swalcliffe)

Email: jperrychimneysweep@gmail.com

SIBFORD STORES & POST OFFICE, SIBFORD FERRIS. OX15 5RG

Tel: 01295 788317/788348

YOUR LOCAL CONVENIENCE STORE AND NEWSAGENT

We deliver newspapers and magazines, 7 days a week to all the surrounding area. Place your regular order today, whether for 1 day a week or 7. Always a wide selection of magazines, specialist titles to order.

Chilled & frozen foods, groceries, cigarettes, beers, wines and spirits, fresh fruit and vegetables, pet food, household goods, toiletries, medical requisites and lots, lots more...

Health Lottery, photocopying, fax service, dry cleaning

We will also undertake your mailings for you - just ask

Always an excellent selection of Hook Norton bottled beers in stock

Telephone your grocery order for free local delivery

**NEW
OPENING
HOURS**

OPENING HOURS
Monday - Friday 7.30am - 7.00pm

Saturday 8am - 6.30pm

Sunday 8am - 1.00 pm

**NEW
OPENING
HOURS**

PLEASE SUPPORT YOUR LOCAL POST OFFICE - THERE ARE LOTS OF PRODUCTS & SERVICES
AVAILABLE ON YOUR DOORSTEP



DID YOU KNOW?

In the early 1990's Oxfordshire Social Services recognised that the rising number of elderly people living in the rural villages of north Oxfordshire had little or no support compared to their contemporaries living in the major towns where Day Centres provided support serving meals and social contact.

At the same time some of the senior pupils at Sibford School, in line with their Quaker ethos, were studying vocational courses preparing for careers in vocational work. These courses included catering, business, horticulture and health and care. Each of these courses had a practical requirement and the Health and Care course was led by the Head of Sixth Form, Gill Manthorpe. The Fielding Boarding House, where Gill lived with her family, afforded ideal accommodation where the students could gain some practical experience in understanding and offering elderly care. Judith Weeks, who worked for Social Services, was also a parent with a child at Sibford School who was taking the Health and Care Course. An invaluable connection was made. Sibford School could provide a safe environment for elderly people who lived in the rural villages around Sibford and who would benefit from the much-needed social contact. Fielding Day Centre was born in April 1992.

The school minibus, driven by Gill provided transport, Sibford School provided meals and the pupils prepared the friendly dining room. With the additional help of village volunteers, the elderly folk enjoyed a programme of games, quizzes, coffee, lunch and tea plus the chance to meet up and chat together. The Sixth form pupils had a first-hand opportunity to understand and observe the needs of the elderly villagers. The Day Centre in Sibford was one of the first set up in the rural communities of north Oxfordshire.

In subsequent years funding, transport and staff have been removed. What was a full day has been curtailed but with the continued support of Sibford School, a Village Lunch Club continues to this very day. Open now to all villagers over 65, lunch is served in the Village Hall every Wednesday and the members continue to value the opportunity to meet and enjoy a chat and lunch together. Members and volunteers will be celebrating their 30th anniversary with a birthday tea on 20 April. New members are always welcome – if you are interested, please contact Keith Hicks, Tel. 780259 or keith.hicks@sibford.co.uk for further information.

Happy Birthday Lunch Club!

Maureen Hicks



LOCAL MARKETS

Banbury - Every Thursday & Saturday. Farmers Market - 1st Friday of the month

Deddington Farmers - 4th Saturday of the month (click & collect)

Chipping Norton - Every Wednesday

Stourton Farmers - 1st Thursday of the month. 6-8pm

Advertising Rates in The Scene

The Sibford Scene is delivered to 480 homes in Sibford Gower, Sibford Ferris and Burdrop

The Prices for 1 year (10 issues) are:

Full page 125mm x 185mm £ 110

1/2 page 125mm x 90mm £ 65

1/4 page 60mm x 90mm £ 35

1/8 page 60mm x 40mm £ 20

Price for colour or a single issue on application to Oonagh O'Neil

You can pay for ads directly into our account:

Sort Code: 60 01 35 Acct 52612236

Yoga

Sibford Village Hall

Tuesdays: Slow & Gentle

Yoga 9-10am

Thursdays: Flow Yoga

9-10am

Chair Yoga

10.15 - 11.15am

**Any enquiries to
juliette53@btinternet.com**



**OPUS Property
Services Ltd**
*Bathroom &
Kitchen Design
and Installation*

From minor alterations to full refurbishment we can transform your bathroom or kitchen into an inspirational space. We offer a complete service from the first sack of rubbish out to the final polish.

Call **Alan** or **Catherine** on
01295 780652 or **07816592124**

Visit: **www.opusps.co.uk**
for photo gallery and to learn more about us.



HOLY TRINITY CHURCH

Easter Blessings

Dear friends,

**Rise heart; thy Lord is risen. Sing his praise
Without delays,**

These opening two lines of George Herbert's beautiful poem Easter encourages us all, whoever we might be, to some sort of celebration at Easter. In his poem he uses the description of music as being something we should have in mind when we think about a celebration.

Now for those of you who might have the wonderful gift of being able to play a musical instrument, or for those us, like myself, who simply enjoy listening to music, what we all might have in common is the thought that music can emotionally change us. There is something about music that is not just physical but also I would suggest spiritual as well. It can affect maybe how we feel, it reminds us also sometimes of people and places. Music can be both exuberant and life affirming, whilst also it can be calming and can bring peace into our lives.

On Easter Sunday, on the 17th April, we celebrate the Resurrection of Jesus, a time to once again hear the beautiful life changing music of God. This Easter we might, individually and together as a village, want to remind ourselves of something the great Greek philosopher Plato is reported to have once said about music:

**It gives a soul to the Universe, wings to the mind,
flight to the imagination and life to everything.**

May I take this opportunity to wish everyone who lives, works and studies in our villages, a very happy and joy filled Easter!

Love & prayers
Revd Neil

Tel: 788005

QUARRY NURSERIES

Philip Gilbert

Quarry Road, Hornton, Nr. Banbury, Oxon OX15 6DF

Nursery: 07903 655267 www.quarrynurseries.co.uk

Please see Website for Latest Opening Times



Original Wooden Platters & Boards

Crafted by hand at Temple Mill in the Sibfords

Trunks and branches from fallen trees planked, seasoned, designed at Temple Mill. Unique, often quirky, always useful boards for:

- ~ Presentation – Food Theatre! ~ Cake Boards ~ Cheese Boards ~
- ~ Chopping Boards ~ Serving Platters ~ Etc ~

**** 5th Wedding Anniversary: 'Wood' ****

Between Sibford Ferris and Sibford Gower. Welcome to view.

07580 597042 - jonquilsabin@hotmail.co.uk – 01295 780418

www.at-temple-mill.co.uk





FRIENDSHIP CLUB

How nice to get together again.

APRIL 5th is our 1st date for the Club to meet since before last Christmas. That seems a LONG LONG time ago.

So on the 5th we have our Easter Tea. We start at 2 pm.

So members come along and have a gossip with Friends and neighbours. There will be FOOD and a CHOCOLATE raffle.

We will try and work out any trips we might make during this year.

I must also tell members of the passing of Gordon Fowler, husband of Alice. We remember him as a very good washer up when Alice held her garden parties.

AND we're always looking for new members.

Eveline Boughton



HOLY TRINITY CHURCH CHATTER

New Look website for the Wykeham Benefice: there is now a new look website for the parishes in the Wykeham Benefice, which is updated every week, with news and events of what all that is happening in our churches.

www.wykehambenefice.org.uk

Services in Holy Trinity Church in April;

14th April Maundy Thursday 7pm Holy Communion remembering the Last Supper

17th APRIL EASTER SUNDAY 9.30am A special Holy Communion service with hymns

24th April Sunday 9.30am Holy Communion with hymn

NEIL'S EASTER JOKES

What do you call the Easter Bunny the Monday after Easter? **Eggs-hausted**

Why shouldn't you tell an Easter egg a joke? **It might crack up**

How does the Easter bunny stay fit? **Eggs-ercise!**

Aaron O'Rourke

- Sibford Gower Based
- All Electrical Works Covered
- Free Quotes
- Friendly Local Family Business



07415210413



AMO_ELECTRICAL



AMO_ELECTRICAL



AMO ELECTRICAL SERVICES
DOMESTIC
COMMERCIAL
INDUSTRIAL



AMOELECTRICAL@HOTMAIL.COM

RED HORSE VALE



Red Horse Vale are a long established and family run distributor of Fuels for heating and vehicles, as well as Building, Farm and Garden Supplies.

Solid Fuels • Logs and Kindling Wood
Gas in Cylinders • Central Heating Oil
Farm Oils • Sand and Ballast
Postcrete • Cement • Slabs
Fencing Materials • Garden Supplies
Top Soil • Composts • Flower Pots
Wood Chippings • Animal Feeds

Call us for a free quotation!

OPEN HOURS

MONDAY - SATURDAY

8am to 5pm

www.redhorsevale.co.uk

01926 642 832

Windmill Farm, Banbury Road (A422), Oxhill,
Warwickshire, CV35 0RP

SIBFORD BUS SERVICE

Service 50A via the Sibfords and Tadmarton is being renumbered 75/75A, with the same number of inbound journeys (although with time changes) but a reduction from five to four return journeys. Here is the latest timetable:

SOA (adj Natwest bank)	6.15	7.35	9.15	11.15	13.15
Shipston (opp garage)	6.42	8.21	9.50	11.50	13.50
Sibford Ferris (opp school)	6.58	8.37	10.06	12.06	14.06
Banbury	7.21	9.00	10.29	12.29	14.29
Banbury	9.35	11.35	14.35	17.30	
Sibford Ferris (opp school)	9.53	11.53	14.53	17.48	
Shipston (opp garage)	10.11	12.11	15.11	18.06	
SOA (adj Natwest bank)	10.45	12.45	14.45	17.45	

Oil and Watercolour classes

Learn the basics in a friendly informal class with easy to follow demonstrations

OIL PAINTING -

Sibford Village Hall
(Friday's 9.30 - 12.30 weekly)

Shutford Village Hall

(Saturday's 9.30 - 12.30 monthly)

WATERCOLOUR -

Sibford Village Hall
(Please contact for times - weekly)

nvfletcher@btinternet.com
www.nigelfletcher.co.uk
 07792 657 248



CALENDAR OF EVENTS

APRIL

- 1st - Mens Brunch - Sun Inn, Hook Norton - 1130am
- 6th - Ladies Coffee Club - Wykham Arms - 11am
- 13th - Horti Talk - Village Hall - 7.30pm
- 15th - Easter Egg Trail - Village Hall 12 noon
- 21st - Sibford Historical Society - Village Hall - 7.30pm
- 23rd - Book Swap Cafe - Village Hall - 10am
- 26th - Sibford Photography Club talk - Village Hall - 7.30pm

APRIL BIN COLLECTIONS

Green Tuesday: 12th; 26th
Blue/Brown Tuesday: 5th; 19th

Unwanted clothing and shoes may be recycled anytime at the Textiles/
Recycling Bank at Sibford School Swimming Pool. Bottle banks at Sibford
Ferris: Elm crossroads and Sibford Gower: Wykham Arms car park.

SIBFORD SCENE
DEADLINE FOR MAY ISSUE -
12 NOON - 18th APRIL 2022

Editor: Tony Skowronski, Jasmine Cottage, Burdrop, OX15 5RN
T: 01295 780490
E: sibfordscene@gmail.com

Ad Manager & Treasurer: Oonagh O'Neill Garnham
Folly Cottage, Main Street, Sibford Ferris. OX15 5RG
T: 01295 788160. Mob: 07717 723919
E: oonaghtoneill@gmail.com

The poster features a light yellow background decorated with various colorful illustrations of flowers and Easter eggs. At the top center, the text 'EASTER TRAIL - FRIDAY 15 APRIL 2022' is written in a bold, black, sans-serif font. Below this, there are four decorated Easter eggs: a large teal egg with white and pink stripes, a purple egg with white wavy lines, a yellow egg with pink stripes, and a yellow egg with white polka dots. The text 'REFRESHMENTS - TEA/COFFEE/CAKES', '£2.50 ENTRY FEE FOR TRAIL', and 'CHOCOLATE EGG ON COMPLETION' is centered in bold black font. Below this, 'Shorter trail for younger children' is also centered. A horizontal line separates the text from the location and time details. The location 'Sibford Village Hall' is on the left, and the time '2 - 5 PM' is on the right, with a note '(Last trail leaves @ 4PM)' below it. The bottom of the poster features more floral and egg illustrations, including a large yellow flower and a purple flower.

REFRESHMENTS - TEA/COFFEE/CAKES
£2.50 ENTRY FEE FOR TRAIL
CHOCOLATE EGG ON COMPLETION
Shorter trail for younger children

Sibford
Village Hall | **2 - 5 PM**
(Last trail leaves
@ 4PM)



**SATURDAY 21st MAY
- SUNDAY 29th MAY**
10am - 6pm all days



Stunning location with café, run by Miss T. Catering with ample parking & a picnic area
Temple Mill, Sibford Gower, Banbury, OX15 5DA · Jonquilsabin@hotmail.co.uk

The Forge Garage (Brailes) Ltd

Telephone: 01608 685247

Email: enquiries@theforgegarage.co.uk



A family-run, community-focused garage since 1952, where excellence is at the centre of all we do. You'll be guaranteed a tailored service every time.

Quite simply, Forge Garage saves you time, money and stress.

Vehicles are everything we know. That's why we're able to keep every part of your car running at optimum – from an honest, reliable MOT to brakes to air conditioning. We're here to help so please contact us today on 01608 685247 if you have any questions about your vehicle, or for a free no-obligation quote.

We also have a pump attended fuel station selling unleaded, diesel and Autogas, as well as Calor gas, kindling, logs, coal, BBQ coal and firelighters.

<https://www.theforgegarage.co.uk/>