

An impressionistic painting of a river scene. The foreground is dominated by dark green reeds and grasses on the left bank, and a large, vibrant tree with orange and yellow foliage on the right bank. The river reflects the sky and the surrounding greenery. The overall style is soft and painterly, with visible brushstrokes and a rich color palette.

SIBFORD SCENE

DECEMBER/JANUARY 2022

Number 439



The recent Warwickshire Hunt Meet

The Forge Garage (Brailes) Ltd

Telephone: 01608 685247

Email: enquiries@theforgegarage.co.uk



A family-run, community-focused garage since 1952, where excellence is at the centre of all we do. You'll be guaranteed a tailored service every time.

Quite simply, Forge Garage saves you time, money and stress.

Vehicles are everything we know. That's why we're able to keep every part of your car running at optimum – from an honest, reliable MOT to brakes to air conditioning. We're here to help so please contact us today on 01608 685247 if you have any questions about your vehicle, or for a free no-obligation quote.

We also have a pump attended fuel station selling unleaded, diesel and Autogas, as well as Calor gas, kindling, logs, coal, BBQ coal and firelighters.

<https://www.theforgegarage.co.uk/>



ED'S THOUGHTS

The Scene is delivered to all 450 households in the Sibfords, so if anyone would like to reach all these households, why not insert a flyer into the Scene?

Please keep the pictures coming (portrait please, for the front cover). This month's were by Nigel Fletcher and Fiona Pidgeon

Merry Christmas to you all!!

Thought for the month:

The boys of the NYPD choir

Still singing "Galway Bay"

And the bells are ringing out

For Christmas day

The Pogues



LETTERS AND NOTICES

VILLAGE HALL LOTTERY!!

Village lottery winners for November:

1st prize - Rachel Levell £70

2nd prize - Amy Brace £42

3rd prize - Keith Hicks £28

Picked by Kathy Yorke and Charles Glazebrook

Noman and Mary Nash wish all their friends in the village a very Happy Christmas and a Peaceful New Year.

We are not delivering cards this year, so please don't send us any as we will feel guilty!

Our love to you all



LETTERS AND NOTICES



HERE WE GO AGAIN!!!

If you have done this and are reading this -

SHAME ON YOU

If the bin is full, take your poo bag home or put it in another bin!

It's simple, isn't it?

John Loggins....

If you wish to apply to the above Charity please write to Mrs E Boughton co Mrs G Soden Wyatts Close Sibford Gower by December 6th. You must be a resident of Sibford.

This made me laugh.:

"A Dartmoor pony could get elected for the Tories here."

(from a disgruntled "I" reader in Devon)

POLLY PREEDY CHRISTMAS CHARITY SHOE BOXES

This was such a success last year and so gratefully received that we have decided to do it again this Christmas. The idea is to collect some small Christmas treats, either for a man or a woman, and put them in a shoe box wrapped in seasonal paper, so that Polly can distribute them to her homeless and vulnerable clients in Banbury.

These can be left in Sibford church where they will be collected in mid December. Tesco sometimes has shoe boxes if you don't have any spare.

Suggestion of contents -

Toiletries, chocolates, nuts, gloves, hat, scarf, hot water bottle, hair brush mince pies etc

Many thanks

Diana Thompson



VILLAGE HALL NEWS

Book Swap Saturdays: 10am – 12pm, Dec 18th (with festive treats!!), Jan 22nd, February 19th, March 19th

- Books for all ages and genres at this popular event.
- Come and have a drink and a chat in the Small Hall. Teas and coffees available.
- No charge, but donations welcome towards the Village Hall fund.

Village Hall Committee and Friends Group

- The Committee is a diverse group of individuals of all ages who each bring a unique mix of skills including experience in business, DIY, drama, finance, law, parenting, and teaching. We do have a space for a new committee member, so if you would like to find out more, please contact Charlotte Davies (Chair) on 07855 499172 or charandjas@icloud.com
- The Friends Group is run by Joan Broady and has been formed to support the Committee in holding events and looking after the Hall. If you have a little time and are looking for ways to be more involved in the village, we would love you to join us. Please contact Joan on 780410 or joanfbroady@gmail.com

Hall Hire and Heating

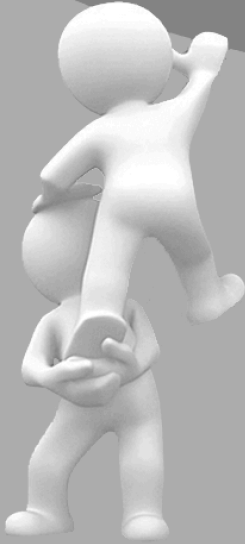
- If you are hiring the Hall and need to adjust the temperature, please check the thermostat first (next to the stage) before adjusting the radiators. When leaving, please reset the thermostat to 20°C and radiators to between 3 and 4. This way we can keep the Hall cosy for everyone this winter. There is a stall in the kitchen if needed to get a better view of the thermostat.
- Remember we still have some COVID guidance in place, so please continue to prioritise hand washing and sanitising, keeping space around you and opening windows to improve ventilation. It's also a good idea to chat with friends after an event by moving outside into the open air!

Hall Bookings

- We have preferential rates for village residents, only £10/hr (one hall); and £18/hr (both halls). Please use us for your next birthday party or for your community group. Contact Ginny: ginnymbennett@googlemail.com or 780373 for more info.

Charlotte Davies

Do you need a helping hand to find
the mortgage that's right
for you?



If you are looking for Independent
Financial Advice... I'm here to help
Call Sue Rowley for a free telephone consultation

01295788475

scr@holyoakes.co.uk

SCR FINANCIAL

Mortgages
Pensions
Investments
Protection

www.scrfinancial.co.uk

Authorised and regulated by the Financial Conduct Authority FCA# 435591

**THE VILLAGE SHOP
HOOK NORTON**

National Lottery

Grocery - Greengrocery - Bakery - Wines

Spirits - Confectionery - Newspapers

Magazines - Cards - Bottled Gas

Open Monday to Friday

8 am to 8 pm

Saturday 8 am to 8 pm

Sunday 8 am to 6 pm

Te le phone: 01608 737245

Please note: On Sunday, we open
at 9am

**Stay in style
in the Sibfords**

Sumptuous self-catering

Newly refurbished self-catering accommodation
set in stunning private gardens with heated
swimming pool, tennis court and croquet lawn.
4 beds, 5 bathrooms. Sleeps 8 (plus 4 in the
main house for larger groups).

Private dinners also catered for up to 16 guests.

Contact **Sally Wass**

T: 01295 780104

E: sally.wass@btinternet.com

www.holmbyhouse.com

**Holmby
House** 



We are as busy as ever at Sibford Gower Endowed Primary School. In Beech Class the children are exploring the theme of Arctic Explorers and started this topic in a very practical way, exploring lumps of floating ice and what happens to them as they melt. This very simple activity really caught the children's imagination, supporting all sorts of ambitious vocabulary and some lovely artwork and descriptive writing. It also linked brilliantly to current global learning themes and the implications for our environment, the impact of melting ice-flows on animals, marine life and the environment.



Care of our environment is a theme regularly raised by our children. The Wombats, who make up our democratically elected pupil school council and represent the views of children across the school, have decided to run a fundraiser across the school in support of Team Seas, an international collaborative fundraiser project which aims to raise enough money to fund the removal of 30 million pounds of marine debris from the ocean. Class representatives have led a whole school assembly to introduce this, working together independently to produce a powerpoint presentation and posters as assembly resources. Well done, Wombats!

As the days get shorter and the darkness of winter approaches, we are having a focus on exploring festivals from world religions that explore the theme of light. The first festival we learned about was Diwali. Following a whole school assembly, children in different classes made their own decorative divas with different levels of complexity depending on their age. Although all the work was lovely, the multi-coloured divas made by Oak Class were particularly original and beautiful.



During the rest of the Autumn term, we will be exploring the festivals of Chanuka and Christmas welcoming special visitors to school, assemblies, lessons, art workshops and celebrations of our own.

To find out more about our wonderful, welcoming village school, please take some time to visit our school website at <http://www.sibford-gower.oxon.sch.uk/>



Explore Sibford School at a Open Event in 2022.

Don't miss your chance to attend a Sibford School open event in 2022. All other Autumn open events were fully booked so book your place today to join us in the new year.

Sibford School is offering whole school open mornings on Friday 14 January and Friday 4 March, as well as a Sixth Form open evening on Thursday 17 February.

These events will offer the opportunity to talk to staff, meet current parents and take a tour of the school with student guides.

Toby explains 'At Sibford we value holistic education where the happiness and well-being of pupils is paramount. We encourage pupils to live adventurously, and foster resilience and we look for the unique talents in every individual that comes to the school.'

'If you are interested in entry for September 2022 and beyond or perhaps for immediate entry, we encourage you to come along and learn more about what we offer here at Sibford.'

Sibford School is a co-educational independent day and boarding school set on a 50-acre campus that offers a junior school, senior school and separate Sixth Form, as well as its own forest school, a state-of-the-art climbing wall and 25 metre swimming pool.

The school offers a gifted and talented programme for the most able pupils, a wide range of sporting opportunities and an excellent support for learning department to support those students with additional learning requirements. Scholarships and bursaries are also available.

Don't miss out and book your place today online at www.sibfordschool.co.uk/events, or call Elspeth Dyer, Admissions Officer on **01295 781 203**.



SIBFORD PHOTOGRAPHY CLUB

On 26th October, we were treated to a talk about how to capture images of live music at concerts and festivals delivered by Carol Henson, a photographer from Eydon in Northamptonshire, with her partner, Dave. The talk was illustrated by a feast of Carol's colourful and impactful images. Her talk was informative, entertaining and enjoyable and her photographs were of a very high standard.

On 30th November, Colin Lamb LRPS will give a short talk about the the Royal Photographic Society and their distinctions program, particularly the Licentiate, followed by a practical session in which members will all have a chance to select and arrange ten of his images to present as a panel for assessment to see if they make the same decisions he did! He will then show the ten prints that he selected for his successful Licentiate panel and the layout he chose for them. Then we will look at members' images on this month's topic, "Autumn Colours".

The Royal Photographic Society is an educational charity promoting both the art and science of photography. The RPS exists to educate the public, promote the highest standards of photography and encourage the public appreciation of photography. The RPS is one of the world's oldest photographic societies with continuous existence since 1853 and has a membership of over 11,000 photographers worldwide. Membership is open to all, irrespective of experience or knowledge. The RPS is situated in the photography hub at Paintworks, Bristol, UK.

At our December meeting on **Tuesday, 28th**, we will travel to southern Africa through the medium of Colin Lamb's photographs of the landscapes and wildlife of Namibia as he recounts details of a two-week visit to the country. We will then view members images on the months topic, "Wild".

Sibford Photography Club also hold outdoor photoshoots, for example walking round nearby villages finding photo opportunities or visiting local nature reserves. In the future, we hope to put on a club exhibition. We would like to welcome more members to the club, so if you are interested in joining, please contact Colin Lamb at colinlamb.cl@gmail.com or phone 01295 780357.

Vaalai's

Sri-Lankan Street Food

Do you wish to try food from the pearl of the Indian Ocean? Sri-Lanka offers a truly exquisite cuisine

Our food truck will bring the authentic taste of Sri-Lankan cuisine to your area

5.00pm - 7.30pm

SIBFORD STORES

ONCE A MONTH

DECEMBER DATE: 5th - Village Shop

JANUARY DATE: 7th - Village Shop

Yoga

Sibford Village Hall

Tuesdays: Slow & Gentle

Yoga 9-10am

Thursdays: Flow Yoga

9-10am

Chair Yoga

10.15 - 11.15am

**Any enquiries to
juliette53@btinternet.com**

OPUS

**OPUS
Property
Services Ltd**

**01295 780652
07816592124**

All aspects of property maintenance and refurbishment undertaken from replacement light bulbs and tap washers to new ceilings and floors.

Plumbing, tiling, wood flooring, floor renovation, under floor heating, plastering, electrics, decorating, damp proofing, carpentry, locks, drains, kitchens, bathrooms etc

**Call us or visit our website for
more information:
www.opusps.co.uk**



NATURE NOTES

The sunny days at the end of October saw what was probably the last of this year's butterflies. A few Red Admirals were seen feeding on windfall apples. As the weather turns colder they will find suitable places to hibernate for the winter months.

As always it is worth being careful when tidying up in the garden. There was a large toad at the base of a stack of logs that I was moving recently. Fortunately, it came to no harm and was relocated to a safer place.

The bird feeders are rarely without birds on them during the daylight hours apart from the odd occasions when a Sparrow Hawk visits the garden. It seems to stay for a few days and then moves on.

Tawny Owls have been very vocal in recent weeks. The following extract is taken from the BTO news

Autumn is the best time to hear Tawny Owl, particularly on clear, moonlit nights. In late summer, young Tawny Owl disperse in an attempt to find their own territories. Tawny Owl need to call more at this time to establish their own territories, and those that can't lay claim to a suitable habitat are unlikely to survive. As we move further into winter, Tawny Owl will become quieter. They are early nesters, with most being on eggs during March, though some can lay much earlier.

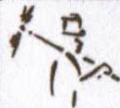
I have noticed that there is often a Robin flitting around in the bushes around street lights very early in the morning, at least an hour before it gets light. I assume it is feeding on insects attracted to the light.

Colin Lamb has submitted the following - Today, I downloaded from my trail camera and found that there is a video clip of a fox carrying what looks like a hen's egg, but then it digs a hole and carefully places the egg in it, as though it is keeping the egg for later. From a quick internet search, it seems this is not unusual behaviour, but interesting none the less. I presume the fox knows that the egg will keep for a while when buried, but I don't know where it found the egg. I guess it could have been laid somewhere accessible by a local chicken, or possibly snatched from a doorstep after an early morning delivery by a milkman! Perhaps if you include this in your Nature Notes, someone might come forward to say that they're missing an egg! Later the same night, the camera has recorded a mouse going to and from a hole only a foot or two from where the egg was buried. It's just as well the fox didn't realise that, or the mouse might have had a nasty surprise!

Any contributions for the next Nature Notes would be very welcome.

ajnewbold88@gmail.com

Andy and Gill Newbold



CHIMNEY SWEEP

Jonathan Perry

*Guild of Master Chimney
Sweeps Qualified*

**Open fires, Inglenooks,
Wood burners, Agas**

*All work certificated for
house insurance purposes*

For a clean, friendly and professional
service please contact me on:

Tel: 07557 058051 (Swalcliffe)

Email: jperrychimneysweep@gmail.com

SIBFORD STORES & POST OFFICE, SIBFORD FERRIS. OX15 5RG

Tel: 01295 788317/788348

YOUR LOCAL CONVENIENCE STORE AND NEWSAGENT

We deliver newspapers and magazines, 7 days a week to all the surrounding area. Place your regular order today, whether for 1 day a week or 7. Always a wide selection of magazines, specialist titles to order.

Chilled & frozen foods, groceries, cigarettes, beers, wines and spirits, fresh fruit and vegetables, pet food, household goods, toiletries, medical requisites and lots, lots more...

Health Lottery, photocopying, fax service, dry cleaning

We will also undertake your mailings for you - just ask

Always an excellent selection of Hook Norton bottled beers in stock

Telephone your grocery order for free local delivery

**NEW
OPENING
HOURS**

OPENING HOURS
Monday - Friday 7.30am - 7.00pm

Saturday 8am - 6.30pm

Sunday 8am - 1.00 pm

**NEW
OPENING
HOURS**

PLEASE SUPPORT YOUR LOCAL POST OFFICE - THERE ARE LOTS OF PRODUCTS & SERVICES
AVAILABLE ON YOUR DOORSTEP



POET'S CORNER

January

A white frost tops the stone walls
and the still solid posts of the abandoned fence line
that stretches up to the ancient track of Ditchedge Lane,
look as if crystal ice upon them might bond to any touch.
The perspective of the field we are in,
points in neat rows towards silhouettes of bare oaks,
tho' in part, still gloriously sky-cloaked by the lifting misty sky,
and to the left, a terrace of twisted small trees,
mostly hawthorn, impatient for first leaf and nesting birds,
or blackthorn, desperate to bloom,
while myriad clumps of frost-spiked grass
pay homage to those fan spread hands of clouds
with their bird-breast plumage and soft angelic down
that hover above the shy pink, grey dawn gold, of sun rising
into a blue sky, that promises brightness to a winter's day
and perhaps a lifting of some heart, in Sibford Gower.

Jo the Po December 2021

- **Bespoke bathrooms, kitchens and carpentry**
- **Fitted furniture**
- **Plumbing and electrical works**
- **Home improvements and renovations**

**Hugo
Seely**

Trading in the Sibfords since 1992

From concept to completion
*Exceptional value,
exceptional service*

T: **01295 780355**

or **07773 319239**

E: **hugo.seely@gmail.com**

Excellent references

**Is your child due to start at primary school in September 2022
OR are you looking for high quality nursery provision?**

We would like to invite you to one of our

OPEN DAYS

**These are running on Saturday mornings,
27th November & 4th December 2021, 9:30-11:00**



We now offer nursery places for children from the term after their 3rd birthday in our dedicated Early Years Unit.

If you would like to find out whether our provision is right for your nursery-aged child, or if your child is due to start school in September 2022, please do come along to visit the school and meet our EYFS teacher and Early Years governor.

Covid restrictions mean that we are welcoming visits 'by appointment' only. Please email our Early Years team at acorn@sibford-gower.oxon.sch.uk to register your interest. A member of our staff will be in touch within 24 hours to agree a visiting time with you.

To find out more about our warm & welcoming village school and our Early Years provision, please take some time to look at our school website <http://www.sibford-gower.oxon.sch.uk/>

Sibford Gower Endowed Primary School is committed to safeguarding and promoting the welfare of children and young people.



VILLAGE PEOPLE

THIS MONTH WE HEAR FROM MARIA OCANA GILL

I've been a wandering for much of my life. Born in London, an early childhood in the depths of southern Spain under Franco and then to a small ordinary Medway town dominated by cement and paper factories but a most wonderful grandparents sweetshop and holidays in the now fashionable Whitstable and Broadstairs.

The call of the north took me to study in wonderful Hull and then via Birmingham to Bristol where my biology and genetic studies led me into the field of Cytogenetics and a career in the NHS.

But I was not to stay long; I needed to follow my Spanish roots and was extraordinarily offered a job in Malaga and so flew off to set up a new cytogenetic service.

From there I travelled to Paris, lived on a 'peniche' on the Seine and then ended up in Sunderland! It served as a base as I flew in and out of Newcastle in a new commercial role.

It took motherhood and the rolling Cotswolds to finally anchor me and that's how I find myself here 23 years later! (arrived in Hook Norton in 1998 and moved here in 2013). I am no longer working in that wonderful world of science but as a Primary School Teacher- and hopefully inspiring others!

I cherish being able to step out of my house directly into the Sibford countryside. I have made new friends through the Sibford Players and you may know me as the 'posh lady on the horse' or Dracula's toothless cook.

Love passing away a few hours in the garden and cooking up a tasty supper for friends especially on bookclub nights and hope they don't notice I haven't quite finished the book! (if only)

Looking forward to the new allotments and sharing a cuppa over vegetable talk! Hope there'll be a view!



Sibford Ferris Parish Council

Cherwell Local Plan Review

A submission has been made to Cherwell District Council (CDC) in response to the Cherwell Local Plan Review and has been published on the Parish Council (PC) website. CDC will now need to review all responses received and will agree a final version of the Plan in 2022.

S106 agreement for Hook Norton Road Development

After much chasing Alex Chrusciak of CDC has finally responded to the Chairman regarding the PC's request that the S106 agreement be amended. Alex has advised that CDC have no intention on amending the S106 agreement but they do intend on appointing someone to liaise with Sibford School and the Warriner to discuss how the money earmarked for them in the S106 agreement could be used to benefit the residents of Sibford Ferris.

Blue Cedar Homes

The PC are aware of the flyers recently sent out by Blue Cedar Homes seeking the opinions of parishioners regarding proposals to build 6 purpose-built retirement living homes on land east of Woodway Road. The PC will fully consider the detail of the application when it has been finalised by Blue Cedar Homes and formally submitted to CDC. We would welcome any comments about this proposal from parishioners as this will help the PC to form its response to the application. Please e-mail your comments to the Parish Clerk.

The Parish Clerk can be contacted by e-mail: sfpc@thesibfords.org.uk or telephone: 07419 126206

LOCAL MARKETS

Banbury - Every Thursday & Saturday. Farmers Market - 1st Friday of the month

Deddington Farmers - 4th Saturday of the month (click & collect)

Chipping Norton - Every Wednesday

Stourton Farmers - 1st Thursday of the month. 6-8pm

SUNDAY SMALLHOLDING

Apple Day 30th October

The most important thing for the first ever Sibford Apple Day, was to have enough apples! Pete and Mel Adams had agreed to bring a scratting machine and a large press and were expecting to have plenty of apples to put through it but the 2021 apple harvest at The Brambles had been pretty unproductive! In somewhat of a panic I began searching the local area for apples and everybody I asked in the village seemed to think Oswyn's orchard was the place to go. I had no idea who Oswyn was nor where I could find him, but find him I eventually did and what a treasure chest was at the end of that particular rainbow! In no time at all a pile of apples grew into a hill and then a mountain. A friend had also been out scrumping and arrived with a large builder's bag holding probably a half tonne of apples that had to be lifted off with a JCB! As I relaxed about having enough apples for Pete and his press, the problem began to form that I would now have too much juice and not enough demi-johns. A quick call was made to the Cotswold Distillery in Whichford to source a 40-gallon bourbon barrel and finally we were good to go. The day itself was great fun. The weather was good and watching the press working was fascinating. Thank you very much to Pete and Mel for giving up their time to bring and operate the press. Thanks to all those who made cakes for the café, and all those who came to eat it. Thank you especially Oswyn and Penny for all the apples!

Date for the diary; Sibford Apple Day - October 22nd 2022

Community Veg Patch

The pigs are being moved onto the area that I used to grow the veg this year. They will clear up the weeds and grass and dig out left over root crops. They will enjoy doing this and will tidy up where I failed. I'm good at getting plants started and am enthusiastic to do a great job, but the weeds always get the better of me in the end. I think I need some help.

The area the pigs are leaving will be the site for next year's vegetable production. It will have been well manured and will grow some great crops. It will grow far more than I will need and so I would like to invite anyone in the village who would like to get involved in a community vegetable growing project to come and have a chat and share some ideas. This is something I have considered for a while and now think it's time to try it out.



HORTI SOCIETY

For our Christmas Horti meeting, Timothy Walker entertained us, as he always does, with his highly individual account of a botanical trip he had taken from Cape town to the borders of Namibia. He described The Cape of Good Hope as one of the most species-rich areas in the world with a Mediterranean type climate but because it is a 'biological island' the flora and fauna of the region have evolved characteristics seen nowhere else.

As a bonus extra we enjoyed mulled wine (thank you Val Law) mince pies and other delicious things, and the chance to catch up with each other.

This is our last meeting before Christmas.

Our 2022 programme will start on 9 February with a trip to Evenly gardens to see the snowdrops. Look out for more details nearer the time.

Meanwhile, have a very Happy Christmas and keep warm by leaf - raking!

Diana Thompson



In Your Garden - Dec/Jan

Now is the time for your garden to show off its' structure - or lack of it - as the frothy blooms of summer, and glorious colours of autumn fade away. This is the time to seriously look at the structure and bones, as winter gardens can be beautiful and elegant. Think of neatly trimmed hedges, clipped of box and yew, graceful silver birches with glittering white bark, and help paint a stunning picture with a focal point of an obelisk, birdbath, garden seat or some arches. If your garden is looking boring, dull and rather bare, here are some good ideas.

- 1 Consider buying cornus alba, whose bright red stem glow in the low sunlight, or silver birch (*Betula jacquemontii*) whose shiny white bark helps to draw the eye to it.
2. Then think about buying some winter flowering shrubs. My favourites are witch hazel (*Hamamelis mollis*), daphnes, and sarcococa, all with heavenly scent. A sprig or two will perfume the whole room.



In Your Garden (Cont"d)

3. I have underplanted a large magnolia with blue anemone blanda, little tete-a-tet daffs, and snowdrops. Flowers do not want to flower here in the summer, as the shade is too deep, but in winter, with the leaves off, and the sun bursting through - we hope - this patch of the garden is full of colour.
4. Plant big pots of tulips, and let them stand in a sheltered place, against a wall. Raise the bottom of the pot off the ground onto some stones, to stop the tulips getting the dreaded soggy bottom. You can move them around the garden later to wherever you need a blast of colour.
5. Cut away old leaves from hellebores, to let their beautiful flowers reach through to the light.
6. Keep mulching tender plants, such as agapanthus, and any dahlias you have left in the soil.
7. Take care of the lawns. Remember not to walk on them when they are frosted, and later on, when the wormcasts start appearing, brush the soil off with a stiff broom. A trimmed edge makes all the difference.
8. Winter is a good time to maintain paths - fixing wobbly paving stones and slabs, and brushing off the moss and slippery leaves.
9. January means loads of walks to ease off the inevitable plumpness, and it is a good time to prune apple and pear trees, whilst they are leafless.
10. Take a photo of your garden this winter, and then see, next winter, if you have given it a facelift, with your new planting ideas. And do have a Merry Christmas.

Jupe Hitching

C. A. Berger

Painting & Decorating
Interiors & Exteriors
Residential & Commercial
Carpentry Repairs
and
Property Maintenance

Mobile: 07875 212 315

Office Tel/Fax:
01295 738633



BESPOKE DESIGN SERVICE FOR
CUSTOM MADE FURNISHINGS

**Pattern book room for you
to browse fabric designs
Curtains, blinds & cushions
Loose covers & lampshade making
Headboards & bedspreads
Curtain poles & tracks
New sofas & chairs & reupholstery**

01295 788145

ann@annwoolgrove.com | www.yarnhill.co.uk

www.annwoolgrove.com

PILATES IN SIBFORD

On-line classes and private tuition available

Madeleine Wilson M.Sc, Mat & Studio Master Teacher Offers

Bespoke One to One and Duet sessions

Training on Specialised Pilates Equipment

Reformers, Chairs, Barrels & Cadillac

Small Group Matwork Classes

For all Levels from Beginners to Advanced

Tel: 01295 78027

Mob: 07905 953300

email:madeleine@pilatesinsibford.co.uk

www.pilatesinsibford.co.uk



SIBFORDS WALKING GROUP

WALKING DATES

29th Nov; 13th Dec - This will be a shorter walk and all walkers that day are invited to lunch at Carter's Yard for our annual get together; 10th Jan; 24th Jan;

We leave the village hall on foot or by car at 10 am sharp to do a circuit of approximately 2 hours. You are advised therefore, to get to the village hall by 9.55 am latest.

Dogs are welcome provided they are put on the lead when requested. Walking boots and poles are recommended but not compulsory. Some routes include stiles. If you would prefer a shorter walk, please contact Sue to discuss as it is sometimes possible to leave a car about halfway, so the less energetic may drop off and drive home. At the village hall, please park either on the road or on the grass field beyond the tarmac.

Please don't hesitate to ring me on 01295 780365 or email sebannister@gmail.com if you have any queries.

Sue Bannister

FOOTPATHS

Ian Sharp, ian@iansharp.net, Lamb's Croft, Back Lane, Sibford Ferris, OX15 5RE. Tel. 01295 780790, is the footpaths warden and anyone who has a problem or complaint should contact him.

LETTERCARVE

Hand-carved, hardwood signs for the home and workplace.

Personalised boards and platters, stable plates and memorials.

#MadeInSibford

Browse the website:

www.lettercarve.com

e: lettercarve@gmail.com

Christmas joke: **How did Mary and Joseph know Jesus' weight when he was born? They had a weigh in a manger!**

QUALITY FISH DIRECT
FROM GRIMSBY MARKET



Proprietor: Robert Hill

hill42804@gmail.com

07578 195979

Freshest fish and shellfish direct from Grimsby to Sibford. Now delivering directly to your home every Thursday from 3.45 - 4.15

MISS "T" CATERING.

Good Home Cooked Food
Catering for events such as:
Anniversaries, Weddings,
Christenings, Birthday parties,
Funerals & private dinner parties.



Also available
Cutlery and Crockery Hire.
Contact Victoria Taylor on:
Mob: 07841 910037
Home: 01295 780206



The Wykham Arms

We're now open inside and outside! and
for takeaway, too

Homemade Desserts

Bespoke special occasions catered for
including anniversaries & birthdays

Weekly Specials

Please tel **01295 788808** or email
info@wykhamarms.co.uk to book or for
more information



The Wykham Arms



@wykhamarms

RICHARD WALLINGTON BUILDER

Block paver drives a speciality
Also extensions, patios
fencing etc.
High Quality Work - Free Estimates
T 01295 780705
Mobile 07743 932545
(Sibford Gower)



SIBFORD HISTORICAL SOCIETY

Dr Gillian White came to Sibford on 28th October to give us another of her unique talks. This time the subject was William Cavendish, 1st Duke of Devonshire, 1640 – 1707, “the most dissolute man in London”. Gill’s talk was, as always, informative, extremely entertaining and full of humour; you never want to miss so much as a single sentence.

Cavendish’s life was so colourful and so relevant to the history of his time that it cannot be done justice in a brief summary. He was, Gillian said, “graceful and gallant, but also hot-tempered and argumentative.” His fiery temperament landed him in many tricky situations, not least when he drew his sword during a dispute at court, which led to a fine and a spell in prison. His mother had a word with the King, reminding him that the Cavendishes had lent the Crown £60,000 during the Civil War- the fine was waived, and William escaped from prison. His fortunes improved when he aided William of Orange in his taking over of the monarchy. He inherited Chatsworth House, a 16th Century building which he redesigned and was instrumental in turning it into the superb place it is today. Chatsworth is another whole topic; perhaps the SHS should consider a visit there next year!

With John Wass’s talk on 18th November we will have concluded this year’s programme. Thank you, all of you who kept the Society going by tuning in to the Zoom talks and attending the live ones when it became possible.

The possibility of a social evening in February 2022 is being considered. Please let Clive (01295 780475) or Diana (01993 811682) know if you are interested in attending. If there is enough enthusiasm we will go ahead and publish details.

The committee wishes you a very Happy Christmas and we look forward to seeing you in 2022!

On 18th November the village hall was packed for Professor John Wass’s talk on ‘Plagues, then and now -: 1665 vs. 2020/21’. John’s talk was, as we had expected, captivating, full of illuminating details and above all, perfectly timed to inform us not only of past pandemics, but also of what the future may hold.

It is truly remarkable how many facts about past plagues John managed to impart, before moving on to an enlightening view of the present situation, with a quote from Jeremy Farrar’s must-read book ‘Spike’ – Dominic Cummings’ scathing analysis of the PM’s reasons for delaying decisions regarding the first lockdown!

John’s warning is that Covid 19 is by means over, but we do have the weapon with which to combat it which was non-existent in 1665: vaccination. He stressed that whilst vaccination entails some risk this is miniscule in comparison to exposure to the virus without the jab. Anti-vaxxers are a danger to everyone.

I, for one, would welcome hearing all this again, and perhaps John could come back and update us with another talk next year. That would be wonderful.

Very many thanks to John for giving us his time and expertise.

Diana Hughes

The gift that keeps on giving - CHARITY CALENDAR

If you're after a great idea for Christmas pressies, then we think our A4 Charity Calendar for 2022 makes a great gift. The calendar features 12 stunning local scenes – taken by talented members of Banbury Camera Club – and helps to raise vital funds for our hospice.

You can pick up your calendars as well as our fantastic range of Christmas cards in one of our shops or find them in the Christmas Shop on our website.

RC Baker Christmas Tractor Run – 18 December

Once again, RC Baker will be bringing the X factor to tractors this Christmas. The hugely popular Tractor Run is making a welcome return, bringing all the glitz and glam of the festive season. On Saturday 18 December, a fleet of fairy-lit tractors will be taking a tour around local villages to spread some Christmas cheer and raise money for Katharine House Hospice. To help plan your evening, you can find all the details as well as the route and timings on our website.

CHRISTMAS TREE RECYCLING

There's nothing like the smell of a real Christmas tree to get you feeling festive.

And this year, instead of worrying about how to environmentally dispose of your tree after all the festivities are over, you can make a donation to Katharine House Hospice and, in return, we will send one of our elves to pick up your tree to be recycled. Interested? Head to our website to find out more and check if your postcode is included in the scheme.

Could you be a VILLAGE CHAMPION for Katharine House?

We're looking for volunteers to help put up posters three or four times a year in their local village to help us spread the word about our upcoming events. We already have some brilliant Village Champions, but we're looking to recruit more. If you think you could help, then we'd love to hear from you. Send an email to GetInvolved@khh.org.uk or find out more on our website.

BEREAVEMENT SUPPORT

Coping with the loss of someone special is difficult and can be painful. We offer support and counselling to the family and friends of those cared for by Katharine House Hospice. But we're also here to help anyone in the wider community who is adjusting to a bereavement. If you think that talking to someone would help, or you just want to find out how we can help support you, please get in touch with Mel Mobley, Bereavement and Counselling Lead, on 01295 811866 or email khhbereavement@ouh.nhs.uk.

Find out more

Head to our website to find out more about all these events, news, and more: www.khh.org.uk.

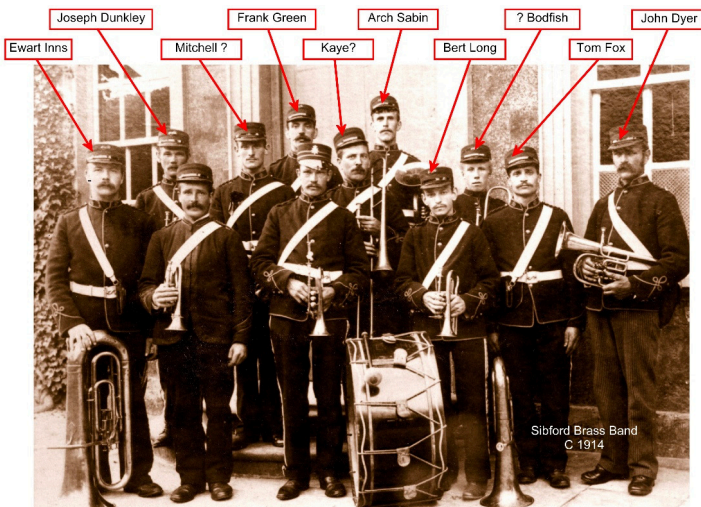


DID YOU KNOW?

Recent extracts on the Sibford Website from the Stevens Diaries have covered the year 1884, and have included comment about the Sibford Brass Band which was founded in June 1884 by the diarist, Reverend Edward T Stevens. Subscriptions from the band members and donations from the wider public were collected. Mr Henry Norris of Swalcliffe Park said he would donate a sovereign – but suggested that a rule should be made to the effect that there should be no performance of the Band on Good Fridays, as that was done at Shutford, much to the annoyance of the inhabitants!

The band members, mostly young agricultural labourers, subscribed half-a-crown a week towards the instruments which were supplied by Messrs Besson. Mr J Griffin was the first Bandmaster, Thomas Lamb the Treasurer and R Gaydon the Secretary. The first instruments arrived late in 1884 and the first public performance was in February 1885. By the end of 1885 the members' subscriptions amounted to £59 9s 6d, with further donations of £19 9s 7d. The instruments had cost £50 17 6d and, after payment of other expenses, a balance of £12 8s 0d remained which was put towards the uniforms.

The original uniforms were made of heavy warm cloth with a high-necked tunic-style jacket which was decorated with braid. This style of uniform had a small matching 'kepi' cap. By 1920 the uniform had been updated and the bandsmen wore a collar and tie under a lapelled jacket. The cap was replaced with a smart peaked cap





DID YOU KNOW?

Cont'd.

By 1893 the conductor was John West and by 1903 J Scruby had taken the conductor's baton. The band used to practise in the Band Room above the Old Post Office and some of the uniforms were found there. When the Band disbanded many of the instruments were retained by the players but the side drums were loaned to The Shipston Town Band. We were fortunate to be able to display the uniform and some instruments, including the original bass drum and euphonium at the exhibition in 2018 celebrating the 100th anniversary of the end of WWI.

I hope you enjoy reading these snippets of life in the Sibfords as much as I enjoy researching and writing them. Wishing all readers, a very Happy Christmas with a great year to come reflecting on Sibford's history. Maureen Hicks



LOCAL NEWS

Friday 3rd December at 7pm

Holy Trinity church

The story of Christmas, favourite carols and some laughs too!

Music from **The Skeptics**, an a-cappella trio based in North Oxfordshire, who bring a "folk-fusion" twist to familiar Christmas Carols

**SHUTFORD
CHRISTMAS MARKET
4TH DECEMBER -
12-3.30PM -
SWALCLIFFE CHURCH**

NURSES' HOME-MADE CAKE STALL
at the Shipston Rotary Victorian Evening
Friday 3rd December 6pm-8pm

For more information please visit
www.shipstonhomenursing.co.uk/events



HOLY TRINITY CHURCH CHATTER

Services & events at Holy Trinity church December & January

- 3rd December** - 7pm Christmas concert & carols with 'The Skeptics'
11th December - 11am onwards Christmas tree festival (throughout December)
12th December - 8am Holy Communion - 5pm **CHRISTINGLE SERVICE**
17th December - 7pm Carols by Candlelight
19th December - 9.30am Holy Communion
24th December - 11.30pm Midnight Communion
25th December - 9.30am Christmas morning family communion
2nd January The Epiphany - 10am Holy Communion
9th January - 8am Holy Communion - 9.30am All age family service
16th January - 9.30am Holy Communion
23rd January - 9.30am Holy Communion
30th January Candlemas - 9.30am Holy Communion

CHURCH SERVICES

Quakers	Sibford Gower, Sunday, 10.30 am
Roman Catholic	Brailes, Saturday, 5pm; Shipston, Sunday 9am Kineton, Sunday 11am
Baptist	Hook Norton, Sunday, 10.30 am

Holiday Cottage in Cornwall

On the beautiful north coast in Poldark country, character cottage set in a large south-facing enclosed garden, is available for holiday lets. It is situated on the outskirts of the vibrant and friendly village of St Agnes.

Scrumbles Hollow sleeps six in three double bedrooms, one with ensuite shower room, plus a family bathroom. Full central heating.

The spacious cottage has an open fire place in a cosy sitting room, while the dining room boasts a log burner. New, fully equipped kitchen and separate utility room for sorting out sportswear after a day on the beach or walking the breathtaking countryside.

Lots of good local pubs and restaurants, shops and galleries. Excellent public transport connections, including Newquay airport (half an hour by car).

For more information, please contact Linda on 01295 780 242 or 07973 226 032 or llindalaneyolo@gmail.com

Aaron O'Rourke

- Sibford Gower Based
- All Electrical Works Covered
- Free Quotes
- Friendly Local Family Business



07415210413



AMO_ELECTRICAL



AMO_ELECTRICAL



AMO ELECTRICAL SERVICES
DOMESTIC
COMMERCIAL
INDUSTRIAL



AMOELECTRICAL@HOTMAIL.COM

RED HORSE VALE



Red Horse Vale are a long established and family run distributor of Fuels for heating and vehicles, as well as Building, Farm and Garden Supplies.

Solid Fuels • Logs and Kindling Wood
Gas in Cylinders • Central Heating Oil
Farm Oils • Sand and Ballast
Postcrete • Cement • Slabs
Fencing Materials • Garden Supplies
Top Soil • Composts • Flower Pots
Wood Chippings • Animal Feeds

Call us for a free quotation!

OPEN HOURS

MONDAY - SATURDAY

8am to 5pm

www.redhorsevale.co.uk

01926 642 832

Windmill Farm, Banbury Road (A422), Oxhill,
Warwickshire, CV35 0RP

CHRISTINGLE SERVICE

AT HOLY TRINITY CHURCH
SIBFORD.

SUNDAY 12th DECEMBER at 5pm.

Our annual Christingle service is on Sunday 12th December at 5pm, Come and sing carols, listen to the story and enjoy lighting of the Christingles.



PLEASE BRING YOUR OWN CHRISTINGLE!

Making one is easy, you'll need:

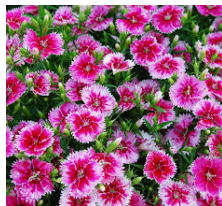
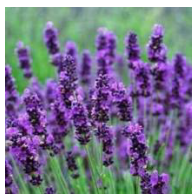
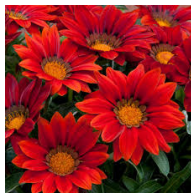
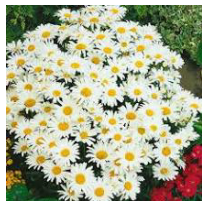
1 orange **** Candle (with a little bit of foil)
Red ribbon **** Sweets or raisins on cocktail sticks.

If you need ribbon or candles, please contact Isabel George on 07989 968736 she has a supply of these, no problem!

2021

QUARRY NURSERIES

Philip Gilbert



Quarry Road, Hornton, Nr. Banbury, Oxon OX15 6DF

Nursery: 07903 655267 www.quarrynurseries.co.uk

Please see Website for Latest Opening Times



Original Wooden Platters & Boards

Crafted by hand at Temple Mill in the Sibfords

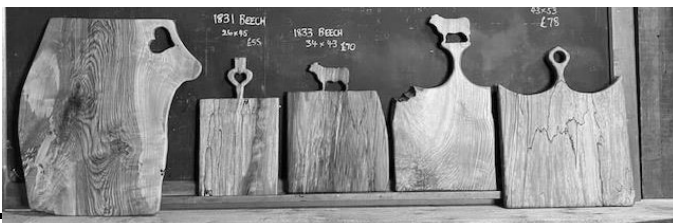
Trunks and branches from fallen trees planked, seasoned, designed at Temple Mill. Unique, often quirky, always useful boards for:

- ~ Presentation – Food Theatre! ~ Cake Boards ~ Cheese Boards ~
- ~ Chopping Boards ~ Serving Platters ~ Etc ~

**** 5th Wedding Anniversary: 'Wood' ****

Between Sibford Ferris and Sibford Gower. Welcome to view.

07580 597042 - jonquilsabin@hotmail.co.uk – 01295 780418
www.at-temple-mill.co.uk





HOLY TRINITY CHURCH

Love came down at Christmas,
Love all lovely, Love divine;
Love was born at Christmas,
Star and angels gave the sign.

Worship we the Godhead,
Love incarnate, Love divine;
Worship we our Jesus:
But wherewith for sacred sign?

Love shall be our token,
Love be yours and love be mine,
Love to God and to all people,
Love for plea and gift and sign.

Dear friends,

This beautiful poem by Christina Rossetti captures I would suggest the real essence of what we truly celebrate at Christmas. As a Christian I do believe that we see God's presence in the world around us whenever we encounter and see an act of love for and to someone else, because as it says in 1 John 4 v16;

God is love. Whoever lives in love lives in God, and God lives in them.

The birth of Jesus, that we celebrate at Christmas, is the physical birth of God's presence in world, the physical birth of God's love on earth. Jesus is what is known as God's incarnation. As a Christian I believe then that Jesus is God's son and so, therefore, is the physical embodiment of God. If I believe that God is love then I also believe that Jesus is also the embodiment of this divine love.

So however we might be preparing to celebrate Christmas, be it on our own, be it with family and friends, be it attending one of the several church services taking place in our village, let us remember what we are truly celebrating; the birth of Jesus, the birth of God's divine love in our lives.

May I take this opportunity to wish everyone who lives, works and studies in our parish a very happy and joy filled Christmas.

Love & prayers, Revd Neil Tel: 788005

WELCOME

WELCOME TO SIBFORD

If you are new to the Sibfords and would like any advice on our village, please call Ivor Hopkyns on T: 788367 (Gower & Burdorp) or Nic Durrant T: 788865 (Ferris). We are lucky enough to have a really great village website at: thesibfords.org.uk



FRIENDSHIP CLUB

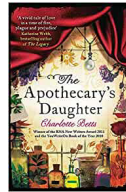
The club will meet at 2-00 in the village hall for our Christmas tea. 7th December

Don't forget cards (if you are giving any) and a little something for the raffle.

Eveline Boughton



WHAT WE'RE READING.....



Advertising Rates

The Sibford Scene is delivered to 480 homes in Sibford Gower, Sibford Ferris and Burdorp

The Prices for 1 year (10 issues) are:

Full page 125mm x 185mm £ 110

1/2 page 125mm x 90mm £ 65

1/4 page 60mm x 90mm £ 35

1/8 page 60mm x 40mm £ 20

Price for colour or a single issue on application to Oonagh O'Neil

You can pay for ads directly into our account:

Sort Code: 60 01 35 Acct 52612236



SIBFORD BUS SERVICE

Service 50A via the Sibfords and Tadmarton is being renumbered 75/75A, with the same number of inbound journeys (although with time changes) but a reduction from five to four return journeys. Here is the latest timetable:

SOA (adj Natwest bank)	6.15	7.35	9.15	11.15	13.15
Shipston (opp garage)	6.42	8.21	9.50	11.50	13.50
Sibford Ferris (opp school)	6.58	8.37	10.06	12.06	14.06
Banbury	7.21	9.00	10.29	12.29	14.29
Banbury	9.35	11.35	14.35	17.30	
Sibford Ferris (opp school)	9.53	11.53	14.53	17.48	
Shipston (opp garage)	10.11	12.11	15.11	18.06	
SOA (adj Natwest bank)	10.45	12.45	14.45	17.45	



**Registration
Services**



 Oil Boiler Servicing

 Oil Aga Servicing

 New Oil Boiler Installations

Hook Norton 01608 738156

Emergency Breakdowns: 07973 128987



CALENDAR OF EVENTS

DECEMBER

- 1st - Ladies Coffee Club - Wykham Arms - 11am
- 1st - The Climate Agenda after COP26 - Villge hall - 6.30pm
- 3rd - Christmas Carols with The Sceptics - Holy Trinity Church -7pm
- 3rd - Mens Brunch - Sun Inn, Hook Norton - 1130am
- 11th - Chritmas Tree Festival - Holy Trinity Church - 10am
- 14th - SGPC meeting - Village Hall - 7pm
- 17th - Carols by Candlelight - Holy Trinity Church - 7pm

JANUARY (Part)

- 14th - Sibford School Open Day

DECEMBER BIN COLLECTIONS

- Green Tuesday: 7th; 21st
- Blue/Brown Tuesday: 14th; 28th

Unwanted clothing and shoes may be recycled anytime at the Textiles/
Recycling Bank at Sibford School Swimming Pool. Bottle banks at Sibford
Ferris: Elm crossroads and Sibford Gower: Wykham Arms car park.

SIBFORD SCENE
DEADLINE FOR FEBRUARY ISSUE -
12 NOON - 18th JANUARY 2022

Editor: Tony Skowronski, Jasmine Cottage, Burdrop, OX15 5RN
T: 01295 780490
E: sibfordscene@gmail.com

Ad Manager & Treasurer: Oonagh O'Neill Garnham
Folly Cottage, Main Street, Sibford Ferris. OX15 5RG
T: 01295 788160. Mob: 07717 723919
E: oonaghtoneill@gmail.com

Here at Grange Farm, Oxfordshire, we believe it's important that our beef gets as much care along the supply chain as we give our prime cattle in the field. So we shortened it. Once our grass-fed steers are ready (and not before), the meat is dry-aged and prepared by our trusted local butcher and delivered back to our farm for sale.



07779287433
 INFO@GRANGEFARBEEF.COM

HALF & WHOLE LAMBS
 NOW AVAILABLE TOO!



DRY-AGED FOR
 21 DAYS

Grange Farm Beef

Direct from our farm to your fork

21 DAY DRY-AGED

All of our beef, from the fillet steaks to the mince, is dry-aged for 21 days by our trusted butcher. This gives our meat an additional depth of flavour.

FARM DIRECT

Straight from us to you.
 Provenance & traceability guaranteed.

FREE RECIPE BOOKLET

With our family beef variety boxes

The Taylor family has reared premium quality beef on Grange Farm for 20 years, and are delighted to offer it directly to customers old and new.

"We had Grange Farm steak for supper and it was delicious! You can't beat grass-fed beef!"
 Sally, Facebook

1

CHOOSE FROM

our mouth-watering selection of grilling & frying steaks, roasting joints, braising and stewing cuts, burgers, mince and diced beef.

2

GET IN TOUCH

to find out what we have in stock and place your order.

Don't forget to ask about our family variety boxes!

3

ENJOY

our premium beef!

We can arrange delivery (subject to location) or you're welcome to stop by the farm and collect your order.



WHOLE AND HALF LAMBS READY NOW
 DELIVERY AVAILABLE

**Grange Farm
 Oxfordshire**

Email: info@grangefarmbeef.com

Phone: +44 (0)777 928 7433

www.grangefarmbeef.com

