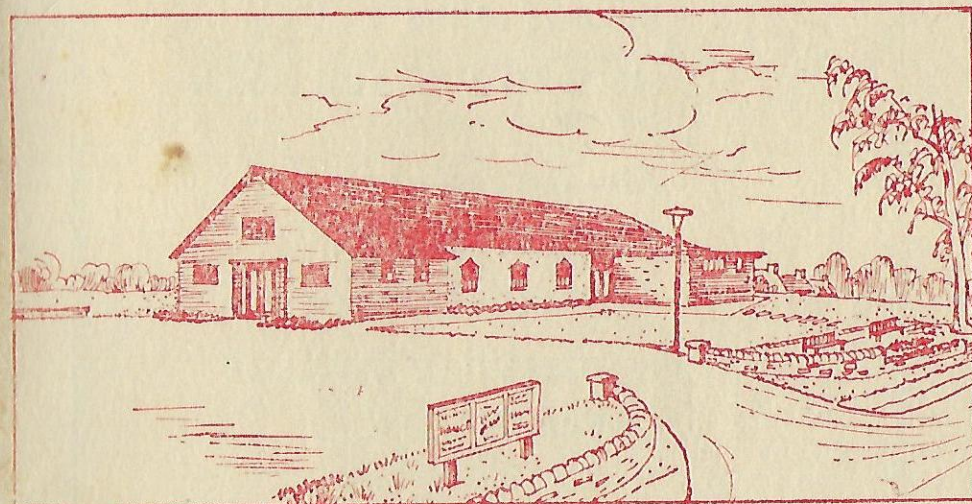


# SIBFORD VILLAGE HALL

SOUVENIR



**PS** May we suggest that you buy extra copies of this Souvenir to send to your friends away from Sibford?

1957

*All profits go to the Sibford Village Hall Maintenance Fund*

*Price One Shilling*

**W. T. HICKS**

LIMITED

BUILDING CONTRACTORS

Hook Norton      PHONE 239

---

Builders of the  
**SIBFORD VILLAGE HALL**

Also contractors to  
**BANBURY R.D.C.**  
**SHIPSTON-ON-STOUR R.D.C.**  
**BOURNVILLE VILLAGE**  
**TRUST, Etc., Etc.**

---

ALL TYPES OF BUILDING AND  
CONSTRUCTIONAL WORK  
UNDERTAKEN

## *Dedication for a Village Hall*

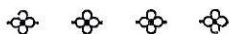
Leave unkind feelings all behind,  
O ye who enter here.  
And let the New Life echo through these walls,  
With visions of the World as it shall be  
When you and I have played our parts and passed away.

Leave to the worn-out days the ancient grudge,  
the harboured bitterness,  
The cankered searching for our neighbour's faults,  
And let us bring a newer Joy to Life  
And live the New Commandment day by day,  
Always lend a helping hand to Youth,  
To cheer the toiler in his struggling days,  
Bring hope to boyhood and bring peace to age,  
To do good, not to envy,  
and to make other folk's happiness our own.

Let this be our Religion and our Creed.  
So shall this room hold only joyous thoughts,  
Here it shall stand for happiness and peace  
To lighten dreary days and make them glad.  
Thus filled with happy memories shall it be  
To all who in their turn, as generations fade and pass away,  
Will dwell within this village on the hills,  
And make these hamlets famed for happiness  
Among all other hamlets round about,  
As a sure home of happy fellowship,  
A lasting record and a staunch abode  
Of the true brotherhood of man.

FRANK LASCELLES

*Congratulations to every one concerned  
in the building of this splendid hall*



PLUMBING INSTALLATION BY

**J. POWELL**  
AND SON



PLUMBER AND HOT WATER  
ENGINEER

Reasonable prices and First-class Workmanship  
Guaranteed

FREE ESTIMATES

40 HORTON VIEW : BANBURY

Telephone 2333

 Celebrations   
*of the Opening of the Village Hall*

NOVEMBER

**Saturday 9th**—Afternoon : THE OPENING by MRS. C. KREYER, O.B.E.,  
late hon. secretary, Oxfordshire Rural Community Council.  
Evening : " SIBFORD SOCIAL EVENING."  
A house-warming party. Admission Free.

**Friday 15th**—CELEBRATION DANCE AND CABARET : 8.30 p.m. to 1 a.m.  
Two bands : **The Goldtones** and **Ron Quinton's Sibford Old  
Scholars Band**  
Cabaret : **Sparti**, the Comedy Cartoonist.  
**Johnny Gadd**, the Singing Guitarist  
Tickets 4s. Refreshments

**Saturday 23rd**—GRAND CHRISTMAS FAIR. 2.30 p.m. to 7 p.m.  
Christmas Gifts : Funfair : Father Christmas  
All proceeds for the Hall Maintenance Fund

**You save space**

with **Sebel**



Sebel steel chairs and tables solve a lot of  
problems. They're strong, they're com-  
fortable, they're good-looking. They can  
be stacked away in a very small space in  
a very short time. In a few minutes a  
roomfull of furniture can be cleared for  
games and dancing

Write for illustrated booklet of complete  
range to :

**SEBEL PRODUCTS LTD.**  
West Street, Erith, Kent



The Nest-A-Bye plywood chair as used at  
SIBFORD NEW VILLAGE HALL, BANBURY

# Sibford Village Hall

As we of the Village Hall Committee arrive at the culmination of our efforts of recent months we are filled with relief and thankfulness to have a job well done, and look forward with keen anticipation to the Hall being opened and put to its proper use. Much work was done after the old village hall was closed by such good people as Messrs. Parkin, Herbert, Carruth, and M. R. Lamb. But you may read the past history on another page! The *real* history of the *real* Hall begins now, with the opening on November 9th, 1957.

The efforts of the committees of the past, and the generous donations, will only have been worth while if future generations of Sibford people take a lively interest in its management. We think you will because it is *your* Hall. Your subscriptions have paid for it, and the committee you elected have built it.

It would take too long to describe the trials and tribulations we have gone through, but the final result you see is a brick hall, as large as it could be with the money available and with as many refinements as were possible: a good floor with accommodation for 180 seated, adequate heating, a good kitchen, committee room and cloakrooms, and a car park.

A great debt is due to all who have helped and given in the past, and we would like to mention particularly the Rowntree Village Trust who have by now given nearly all of a promised £1,000 by doubling donations: the Barrow Cadbury Trust, £250; those good people who gave covenanted subscriptions; the Friends Work Camp who did such a gigantic task in clearing the car park, making fences, repairing furniture etc. together with many voluntary helpers from the village.

We have been especially touched by goodwill gifts from former Sibford residents no longer with us: Mrs. M. E. Oddie has given the Hall an electric clock, Mrs. Frances E. Wells a table. The Sibford Social Evening Committee has given a garden seat and contribution towards buying a piano. It would be invidious to mention by name our present residents who have helped, for so many have done so. If you have given anything, your time or your advice, we of the Committee express our grateful thanks and appreciation. We hope that you will derive pleasure from the Hall in the future.

We shall all find it difficult to get used to the idea of actually having this Hall, and I apologise that we have had to talk for so long about a Hall which did not exist, but we are confident now, with the interest that has been taken, and the promise of future bookings, that this building will do much to help us village people enjoy ourselves and each other's company, and will provide a place for future generations to keep alive the spirit and traditions of country life.

We express our thanks to Messrs. Nuttall and Lucas, our architects; to the Oxfordshire Rural Community Council and Mr. A. D. Dodds-Parker, M.P., for their help and counsel; to Mr. Siggs and Mr. Oldham, who have acted as auditors; and to our builders, Messrs. W. T. Hicks Ltd. The sudden death of Mr. W. Hicks has robbed us of a good friend and sympathetic adviser.

S. A. AGNEW  
Chairman

on behalf of the Sibford Village Hall Committee:

REGINALD ROWNTREE,  
Vice-Chairman.

FRED INNS,  
Hon. Treasurer.

H. R. LOWE,  
Hon. Secretary,  
The Colony, Sibford Gower,  
Near Banbury.

Mrs. W. E. Bennett  
Mrs. A. C. Crabtree  
Mrs. F. T. Harris  
Miss A. M. Inns  
Miss Marjorie Sabin

M. R. Lamb  
Leslie Baily  
Joe Canning  
Michael Canning  
W. Dunkley  
Percy Gardiner  
F. Hall  
Arthur Harrison  
L. W. Poulton  
Peter Stewart

THE TRUSTEES of the Hall, under a Trust Deed drawn up in 1946, are Dr. Agnew, Mr. M. R. Lamb, and Mr. J. Kennedy Carruth.

Apply to

**MR. H. R. LOWE**

*Hon. Secretary,  
Sibford Village Hall Committee,*

**FOR TERMS OF HIRE OF THE HALL**

*The Colony,  
Sibford Gower,  
Near Banbury.*

*Telephone Swalcliffe 353*

SIBFORD VILLAGE HALL

ELECTRICAL INSTALLATIONS BY

**J. GIBBS**

SIBFORD FERRIS and 9 BUTCHERS ROW, BANBURY

Phone :  
Swalcliffe 303



Phone :  
Banbury 2405

*Flooring Installation in the  
Sibford Village Hall by*

**BANBURY FLOORING  
SERVICES**

*Flooring Specialist*

66 Calthorpe Street,  
Banbury.

Phone :  
Banbury 3235

*Builders Merchants  
Iron and Steel Merchants  
Fencing Specialists*



**JAMES FRISWELL  
AND SON LIMITED**



George Street  
**BANBURY**

Telephone 3113

# Some thoughts on the years leading to the Village Hall

by M. R. LAMB

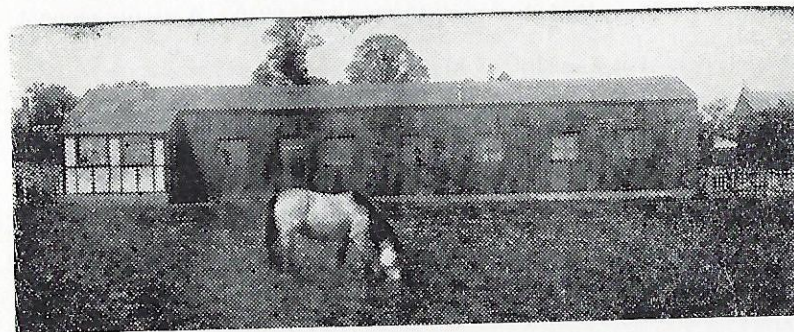
Previous to the year 1914 any concerts, dances, dinners, parish teas, etc., took place in the Village School, or in the old dining hall at the Friends' School, a temporary stage of forms and trestle table tops being erected. Of course no dances were permitted at the Friends' School in those days; only the use of the piano was allowed.

I have some recollection that at Queen Victoria's Diamond Jubilee in 1897 a tea or dinner took place in the barn opposite Paradise House, Sibford Ferris. Up to 1914 quite a lot of use was made of the Village School for concerts, dances (possibly four in a year), country dancing classes, morris dancing, and the great annual event—Sibford Club Dinner. It must be remembered that up to this time there was no means of getting to Banbury except on Thursday and Saturday by the carrier's horse and cart, the journey taking approximately four hours, and even in late 1914 the moving pictures had only just arrived in Banbury.

Before 1914 Sibford had two uniformed brass bands, the Old Band whose headquarters were at The Bishop Blaize, and the Temperance Band, who used the Mission Room. The Band of Hope and Adult School also used the Mission Room, and about 1913 a string band was formed with quite a lot of novices: they practised in Mr. Inns' plumbers' shop at the Post Office, and when they had had a full night practising "Art thou weary?" the Post Office people were very weary. In fact they came out and told us so.

The Play scene from "A Midsummer Night's Dream" was produced by Mr. Frank Lascelles in the summer of 1912 as a sideshow at a Fete held at the Manor, and was thought so successful by Mr. Lascelles that a tour of some towns was carried out in 1913. The places visited were Oxford, Newbury, Evesham, Wolverton, Stratford-on-Avon, Banbury, Salisbury, Winchester, and Bournemouth.

During 1919-33 Mr. Lascelles was identified with a wooden hut that was used as a village hall, the entrance being opposite the Co-operative Stores. After his death the people of Sibford learned with dismay that the Hall they thought belonged to Sibford had, in fact, never done so, and further that it was, with the rest of the Lascelles estate, heavily mortgaged. A meeting of the Sibfords was called and a committee was appointed, under the chairmanship of myself, to meet the mortgagee and fight to save the Hall if possible, and any of the furnishings. After many meetings it was found impossible to save the Hall, but most of the furnishings were saved. It was decided to start a fund for obtaining a new Hall, and meanwhile the committee took steps to rent the old Hall from the mortgagees as a



The old Sibford Hall, now demolished



The 1914 "Midsummer Night's Dream": From the left: Mark Barnes, Thomas Manning, George Bodfish, Joseph Alcock, M. R. Lamb.

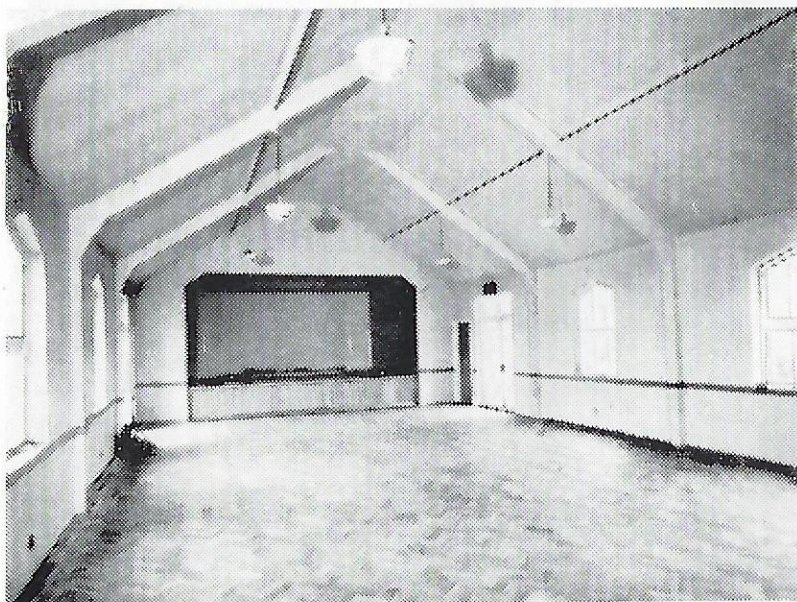


The same play in 1956, in aid of the Village Hall Fund: W. Dunkley, Bill Barton, W. Morbey ("Lion"), Albert Hanks, Raymond Thompson, Kathleen and Barry Berrington.

headquarters for events to swell this fund. Up to the outbreak of the 1939 war various efforts had raised upwards of £250. A goodly amount of this sum was raised by an annual fete, held in the grounds of the Friends School at The Hill, by kind permission of the Headmaster.

After the war Mr. Hiles converted a coachhouse and workshop at Sibford Ferris into a room for social activities, and it was in great demand. In due course Mr. Carruth was elected chairman of the Village Hall Committee and a scheme he started took the fund into the thousands. A large amount of work was done by the Hall Committee; a fete held just after the war raised over £200. With the purchase of the present site and acceptance by the villagers of the plans drawn up by Mr. Hunt, a stone-built hall was hoped for in the near future. But the Korean crisis of 1951 cancelled out any hope of grants from Government sources, so everything was stopped again.

The village, at the annual Hall meeting, felt that if it were possible to obtain a disused Y.M.C.A. Hall or other large building from R.A.F. or Army sites this should be explored, and many journeys were made by the committee to see various buildings but most of them were too narrow and wider ones had been built of brick and cement and so were not removable; so this also had to be dropped.



The interior of the new Sibford Village Hall

Photo: Peter Buckland

## Our progress since 1954

By REGINALD ROWNTREE

It was in 1954 that the Hall Committee called a public meeting, at which the W.I. and others asked for renewed efforts to build a hall.

Owing to hesitation on the part of others, I found myself chairman of the Committee together with Harry Lowe as Secretary, both of us comparative newcomers to the village. We remade contact with the Oxfordshire Rural Community Council office, and found that a Ministry of Education grant was available up to one third of the cost of halls built by voluntary labour. The village, at a further public meeting, authorised the Committee to go ahead to lay plans for erecting a hall built in this way. Accordingly we collected information about sectional halls in wood, in concrete, and in brick. A change in ministerial policy then allowed similar grants for professionally built halls, and all existing ideas were scrapped in favour of this new type of hall.

Mr. Hunt, mentioned by M. R. Lamb, had retired by this time, but we were again indebted to him for much advice in our search for help.

A wonderful scheme was submitted to us, by a local architect, but which, when pared down to the costs that we could manage, had lost all architectural features.

Designs were submitted to us by various firms marketing prefabricated types of structures; we were even offered a stone hall, to be built in material from a dismantled "stately home of England."

Eventually, through lack of planning approval, and by common consent, these ideas were discarded in favour of a fine design in brick by Orrel H. Nuttall and Lucas; this is the Hall that we now see, built during the period of chairmanship of Dr. Agnew.

---

"ANIMAL, VEGETABLE, OR MINERAL": Among lectures in the Village Hall in the New Year will be a visit by Mr. Nicholas Thomas, of Birmingham Museum, an archaeologist who has appeared in the T.V. "Animal, Vegetable, and Mineral" programme. He will speak about recent excavations in the Sibford area. Anyone who has ancient pottery, arrowheads, etc. is invited to bring them for identification to this meeting, details of which will be posted on notice boards.

For Calendar of other events in the Hall see centre pages of this Souvenir

---

ACKNOWLEDGEMENTS: For help in the production of this Souvenir our thanks are due to our architect, Mr. Lucas, and to "The Banbury Guardian"; to the advertisers who by taking space made its production possible; to the Sibford Old Scholars' Association for the loan of blocks; and to the following for photographs: Mr. K. P. Woolhouse, Miss A. M. Inns, Mr. Peter Buckland, Mr. Leslie Baily and Mr. Lewis Poulton.

# H. M. STEWART & SONS

*Hauliers, Contractors,  
Building Sand & Stone Quarriers*

## SIBFORD FERRIS

Near BANBURY, Oxon

Telephone Swalcliffe 19

\* \* \* \* \*

Many types of

### COTSWOLD STONE

supplied and delivered, including

WALLING STONE (2" - 3" and Dutch Walling)

CRAZY PAVING STONE, ROCKERY STONE, etc.

\* \* \* \* \*

### ROAD CONSTRUCTION

Repairs executed—Farm drives and roads being a speciality

## AT YOUR SERVICE

# THE CO-OPERATIVE SHOP

SIBFORD GOWER

*For Top Quality Groceries  
and Provisions*

MILK, BREAD & CONFECTIONERY  
COAL and FUEL OF ALL KINDS



A busy scene during the building of the Hall and laying-out of the site. And (below) some who helped :

Young people of eight nationalities who joined volunteers from the village. They came from France, Germany, the U.S.A., Holland, Sweden, Norway, Scotland and England. The camp leader, Martin Dodsworth, is in the centre at the back.

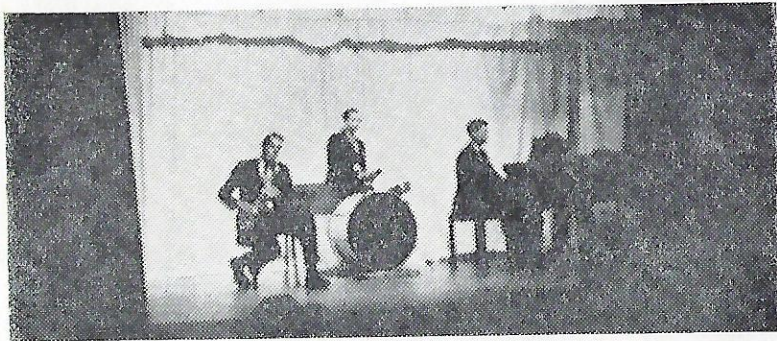






Morris Dancers in the Ferris, 1957

The Vicar opens the  
Flower Show



The Goldtones' first appearance, 1956, in a Village Hall Fund concert, in which we were also entertained by pupils of the Sibford School of Dancing (below).



## Present day Sibford

by LEWIS W. POULTON

The Sibfords, standing as they do far enough from, yet near enough to, the rush and tear of present day life, are two of the least spoilt of the North Oxfordshire villages. Nevertheless, many changes have been and are taking place. The stone cottages are fast having their thatched roofs replaced by tiles. The District Council has installed a main sewage disposal system, which, together with the piped water supply and mains electricity provide all the "mod. cons." so desired today.

Coupled with the wonderful scenery for which the district is well known, this has caused a keen demand for property. There is a steady influx of new residents, who seek a retreat in this spur of the Cotswolds after a day's or life's work in more hectic surroundings. The buying up by these very welcome members of the community of many small houses for modernisation has resulted in the small village cottage being almost unobtainable for renting. Therefore the demand on the District Council for houses is considerable, and some 32 council houses have been built since the war, on three estates. These, together with six pre-war houses, are now almost the only cottage property available for letting in Sibford. Whilst they are unfortunately not built with the lovely Cotswold stone of the older properties, they are homes that fit reasonably well into the countryside.

Like most country places Sibford has lost many of its local craftsmen and tradesmen. Even the resident police constable has gone! There are still local grocers, builders, and plumbers, but meat, bread, etc. are now delivered from the towns. Modern transport enables the population to get to the towns for employment and shopping. A large number work in a factory in Banbury, and others in shops and offices.

The Friends' Boarding School, which has a considerable effect on the village in general, provides work for some men and women: a local stone quarry and the ironstone workings in the Wroxton district offer a living for others. The agricultural holdings are mainly small "family" farms, so there are few agricultural employees left.

There are many societies, clubs etc., available for recreation and enjoyment. All these have been handicapped by the lack of a suitable meeting place, and it is hoped they will find the new hall a fillip to their activities.

With a lively social life, and a fine new village centre, a growing population, coupled with the beautiful position in glorious scenery that—thank goodness—is in no danger of being spoilt by the ironstone working which threatens to desecrate many of the villages of North Oxfordshire in the next twenty years, the Sibfords may well become one of the very few remaining beauty spots and desirable places in which to live in the Banbury district. As such they should continue and indeed increase their attraction for visitors, residents, and business concerns, without ever losing their old-world charm. At least let us hope so.

## CLARKS (BANBURY) LTD.

FLOUR MILLERS, AGRICULTURAL MERCHANTS and SEEDSMEN

Station Mills, Banbury. North Newington Mills, Banbury

(phone Banbury 2898 - 2 lines)



We offer congratulations and good wishes  
for the prosperity and success of the new  
SIBFORD VILLAGE HALL

## J. E. SIMMS

ELECTRICAL CONTRACTORS

INSTALLATION . . . SALES  
SERVICE

*The BEST workmanship*

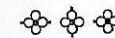
*The RIGHT price*

## SIBFORD FERRIS

BANBURY — OXON

## Hunt, Edmunds & Co Ltd

Congratulate  
all those concerned  
on their initiative and effort  
in producing  
this excellent Village Hall  
and offer  
their sincere wishes  
for its future prosperity



## Hunt, Edmunds

and Co. Ltd.

Brewers, Wine and Spirit Merchants

THE BREWERY : BANBURY

Telephone : Banbury 2284

# Calendar of Future Events

The Hall is now available for letting. Up to the time of going to press with this Souvenir the following bookings had been received. Later bookings will be advertised on the notice boards and in "The Banbury Guardian."

Events sponsored by the Village Hall Entertainments Sub-committee, for Hall funds, are indicated below by the letter (V). Other events are organised by various village societies, which book the Hall for their own purposes; a list of Clubs appears at the end of this Souvenir.

## REGULAR BOOKINGS

**Mondays**, at 7.45 p.m. : **The Sibford Singers** rehearsal.

**Tuesdays and Wednesdays**, evening : **Badminton**, unless other special priority bookings are received, in which case badminton will stand down.

**Thursdays**, 7.30 p.m., commencing November 21st : **Community Dancing** (old-time, square, and folk dancing). Except 2nd Thursday in each month.

These arrangements are for the time being, and are subject to revision.

\* \* \* \* \*

## SPECIAL EVENTS

**November 15th, Friday, 8.30 p.m. to 1 a.m. CELEBRATION DANCE**

\* \* \* \* \*

**November 23rd, Saturday, 2.30 p.m. to 7 p.m. GRAND CHRISTMAS FAIR**

\* \* \* \* \*

**November 29th, Friday, 7.30 p.m. SIBFORD CELEBRITY EVENING (V)**

The first of a series of exceptional attractions, to be held at intervals. These will not be stiff lectures; they will be informal talks, with opportunity for all to ask questions and contribute to the discussion. Cups of tea provided.

**CHRISTOPHER CHATAWAY**, the runner and TV personality will speak and lead a discussion. Chairman : **Commander Lang**.

Admission 2s. 6d.; teenagers still at school 1s.

\* \* \* \* \*

**November 30th, Saturday : SIBFORD HORTICULTURAL SOCIETY WINTER SHOW** (afternoon). **DANCE** in the evening.

\* \* \* \* \*

**December 6th, Friday, at 7.30 p.m. DRAMA EVENING**

The **SIBFORD PLAYERS** jointly with the **BLOXHAM BARN-STORMERS** to present three one-act plays.

Sibford presents **The Rose and Crown** by J. B. Priestley and

**The Man in the Bowler Hat** by A. A. Milne.

Both plays produced by Spencer Lester, of Banbury Cross Players.

Bloxham presents **The Mayor of Torontal** by Gwentyth Jones.

Admission : 2s. and 1s. 6d.

**December 10th, Tuesday, at 2.30 p.m.** 1st meeting in the Hall of the Women's Institute. Thereafter monthly.

\* \* \* \* \*

**December 11th, Wednesday, at 7.30 p.m.** **WHIST DRIVE**, organised by John Sabin and Lewis Poulton (V). Admission 3s., including refreshments. Good prizes.

\* \* \* \* \*

**December 13th, Friday, at 8 p.m. CAROL CONCERT.**

**The Sibford Singers** (conductor Clive Penman) and soloists, in a Festival of carols.

This is non-denominational, a seasonable celebration in which all Sibford people will be welcome to join. Silver Collection.

\* \* \* \* \*

**December 20th, Friday, at 7.30 p.m.**

**Sibford School of Dancing** annual show : "Red Riding Hood."

\* \* \* \* \*

**December 21st, Saturday, at 7.30 p.m.**

**WOMEN'S INSTITUTE** Christmas Party

\* \* \* \* \*

**December 26th, Boxing Day : SIBFORD FOOTBALL CLUB** Dance

\* \* \* \* \*

**January 27th, Monday, at 7.45 p.m. : LESLIE WOODGATE**

The famous choral conductor of the B.B.C. will give a talk on his experiences and will conduct the **SIBFORD SINGERS**.

Chairman : **Leslie Baily**

Admission 2s. 6d.

This event is organised jointly by the Singers and the Village Hall Entertainments Committee.

\* \* \* \* \*

**February 8th, Saturday, at 7.30 p.m. FILM SHOW** by Fellowship of Reconciliation.

\* \* \* \* \*

**February 21st, Friday. SIBFORD FARMING CLUB DANCE.**

\* \* \* \* \*

**March 8th, Saturday, at 7.30 p.m. SIBFORD CELEBRITY EVENING (V)**

"**DIGGING UP THE PAST**" **Nicholas Thomas**, of Birmingham Museum, will discuss Ancient British and Roman "finds" with local people, and with an archeologist who made excavations recently near Swalcliffe.

Admission 2s. 6d.

Teenagers still at school 1s.

\* \* \* \* \*

**In the Spring. "MUSIC FOR EVERY MOOD."**

A concert by the Sibford Singers, including "**Acis and Galatea**" by Handel. Details will be announced later.

\* \* \* \* \*

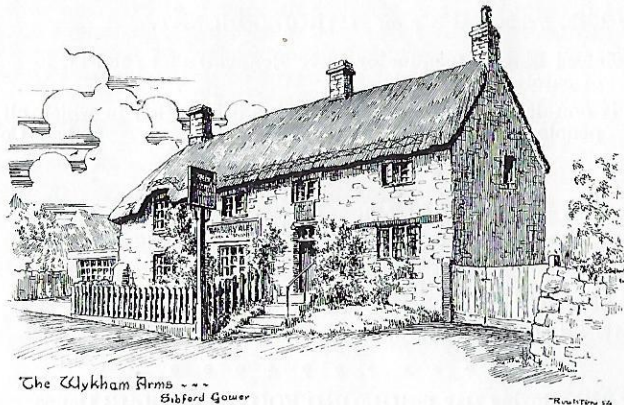
**April 12th, Saturday. SIBFORD HORTICULTURAL SOCIETY** Spring Show and Dance.

YOU MUST VISIT  
**THE WYKHAM ARMS**

SIBFORD GOWER

Fully Licensed

Tel: SWALCLIFFE 351



The Wykham Arms - - -  
Sibford Gower

Mine Host: F. T. HARRIS

## Wilfred Green

SIBFORD FERRIS

FOR HIGH CLASS

**GROCERIES  
and PROVISIONS**

*Weekly Deliveries*

Telephone : Swalcliffe 343

## Broughton Castle

BANBURY - - - OXON

Built 1306 and 1554

The property of the family of  
Lord Saye and Sele since 1451

\* \* \* \*

Sibford 5 miles. Banbury Cross 2½ miles  
Oxford 25 miles. Warwick 19 miles.  
Stratford-on-Avon 19 miles.

\* \* \* \*

Open 2 p.m. to 6 p.m. every Wed-  
nesday from April 1st to September  
30th, and to parties on any day by  
appointment. Charge 2s. 6d. each.

Phone : Bloxham 224

## Sibford School of Dancing

opening in

VILLAGE HALL

BALLROOM CLASSES

commencing

THURSDAY, NOVEMBER 14th

9-10 p.m.

CHILDREN'S BALLET CLASSES

EVERY FRIDAY

Babies 3.55 p.m.

Older Children 4.30 p.m.

to commence in

VILLAGE HALL

NOVEMBER 15th

All Classes 2/- Per Class

"ANNUAL SHOW" by all Pupils

"RED RIDING HOOD"

FRIDAY, DECEMBER 20th 7.30p.m.

## HAYDN HEARD

*for*

**RECORDS, SHEET MUSIC  
INSTRUMENTS, ACCESSORIES**

RECORD AUDITION STUDIOS

**12 CHURCH LANE  
BANBURY**

# Temple Close Nursery School

SIBFORD GOWER

Principal : Mrs. Eric Stewart

Registered with the Nursery School Association  
of Great Britain and N. Ireland

*Specially planned and officially  
approved accommodation*

Fully Qualified Teacher  
for Children 3-5 years

Mornings only  
9 a.m.—12 noon

Phone : *Swalcliffe 22*

From the Cradle to the Grave

Drink Natures Finest Food

## TUBERCULIN TESTED MILK

Produced and delivered daily in

Sibford Ferris and Sibford Gower

BY

**W. L. POULTON and SONS**

BURDROP FARM DAIRY : SIBFORD GOWER

## 1066 and all that

SOME HISTORICAL NOTES ON SIBFORD

By LESLIE BAILY

How old is Sibford? Stone weapons and flint arrow-heads turned up by the plough are links with the Ancient Britons who lived here. Excavations recently made at Swalcliffe Lea show that there were fortified villages hereabouts before the Romans came. Long before that, men lived on our North Oxfordshire hills: the mysterious ring of Roll-right Stones belongs to a past so dimmed by the passage of thousands of years that scholars are unable to say with certainty why it was put there.

The fact that the two villages stand on hilltops is significant. Probably the first Sibfordians lived behind walls circling these heights: outside and below lay swamps, forest, wild animals, danger. But when did the hamlets acquire their present names? As far as I know, this has never been established—a great deal of research has yet to be done on the history of Sibford. When William the Conqueror took Britain in 1066 and made his great survey of the country his surveyors inscribed in Domesday Book the fact that Henry de Ferrieres was the chief landowner at Scipforde (S. Ferris), and William, son of Corbucion, held land at Sibeford (S. Gower). In those days they were not so particular about spellings as we are: Old English charters refer to Siba's Ford. A charter of 1216 mentions Thomas Goher as a landowner here—hence, most probably, the place-name Gower.

By this time the Knight Templers had come to Sibford. About 1153 they obtained the whole manor of Sibford Ferris and a chapel at the Gower. They were a branch of a great international order of knighthood, and it may well be that the knights who came riding through Sibford press-ganged our peasants into service in the then wars in the Middle East, the Crusades.

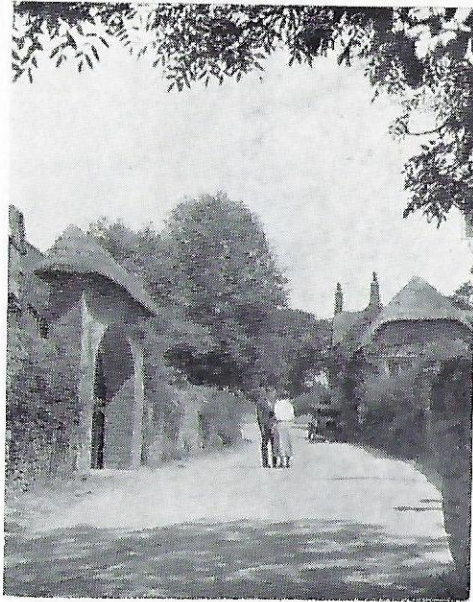
At Sibford the Templers owned land and a mill (still known as Temple Mill) and they quarrelled with the Cistercian monks at Holwell Grange, between Sibford and Swalcliffe. Two hundred years later a priest was still saying mass three times a week at the Chapel at Sibford Gower, but it had fallen into disrepair. It has long since disappeared.

Sibford was included in the Parish of Swalcliffe until 1840 when the present Anglican Church at Sibford Gower was opened.

Walking around Sibford, one may see the humps in the fields, clearly marking the old-time strip cultivation. For centuries the land was open—there were no hedges, and there was much common furze land and forest outside the villages. In mediaeval times each village had, as its "boss," the Lord of the Manor. In the Gower, it is said, the ancient manor was the house that stands back almost opposite the Post Office.

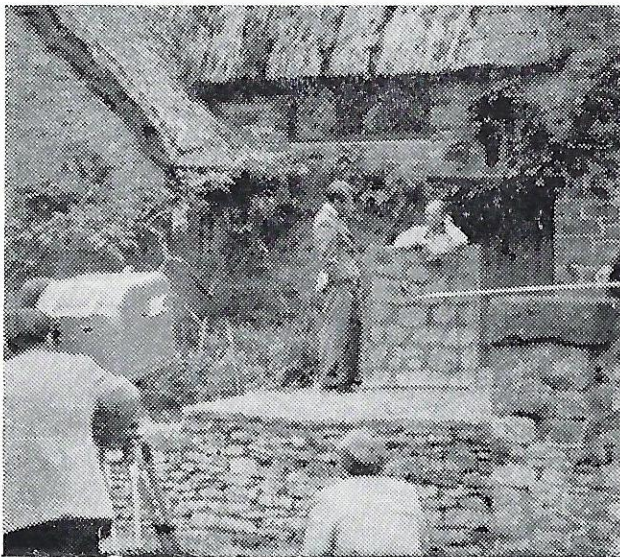
The present Manor House was so called by Frank Lascelles when he converted old property opposite the Wykham Arms for his residence.

1934



Sibford Gower

BELOW: Modern times bring modern methods — Christopher Chataway interviews Joe Canning for T.V., at The Manor. Joe was playing "Wall" in "A Midsummer Night's Dream."



1956

Mr. Lascelles was famous as a pageant master, his productions including the British Empire Pageant at Wembley, 1924. While staying with him at Sibford in 1914 Ivor Novello is said to have composed "Keep the Home Fires Burning."

Opposite The Manor is the Wykham Arms, presumably named after the famous William of Wykeham, who built part of Swalcliffe Church in the 14th century. The age of the Wykham Arms is uncertain, but during recent alterations a 300-years-old penny was found there.

The 18th century Sibford Ferris manor house was what is now the oldest part of the Friends School. The deeds show that in 1797 it belonged to the Pettifer family who sold it later to the Harris family, who sold it for £1,200 in 1842 to the Society of Friends "for the purpose of having a school."

The village school at Sibford Gower is much older, probably being founded in 1623 (though the present building dates only from 1866). It was a remarkable institution: 300 years ago virtually only the rich and the privileged received an education, yet this little school was endowed so that all children in the Gower could be educated free; those from the Ferris had to pay. There are in England many ancient grammar schools that were endowed in a like manner, but historians say that an endowed "primary" school of such antiquity is rare.

The endowment came from the Sibford Gower Town Estate which was given to the community about 1560. The profit from the land had to be divided, one third to the relief of the poor, one third to "pious and charitable purposes," and one third to the school. The Town Estate Charity is still in existence; practically 400 years old, it is our most venerable village institution.

A great change in the appearance of the countryside and in methods of agriculture came about nearly 200 years ago, when under the Enclosure Acts the lands were re-allocated among land-owners, hedges were made, and much common land abolished. The Ferris Enclosure Award is dated 1789, the Gower 1773.

Some 206 acres at Sibford Heath were allocated under the award to the Town Estate trustees. Adjoining this land was a patch of furze land where from time immemorial the poor people of Sibford had freely gathered fuel. With the enclosure of the lands they might have been deprived of this, but the Enclosure Act thoughtfully added 10 acres of the former furze land to the Town Estate to be farmed and the profit used to buy fuel for "such of the poor people as do now and shall hereafter reside within the Township." Today the allocation is made in coal to widows and old age pensioners.

For centuries the Cotswolds was a rich wool-producing area; one can see at Chipping Campden the fine houses of the merchants. Along such ancient roads as that which crosses Traitor's Ford (possibly "trader's ford") went the packhorses laden with wool. In Sibford we have an inn, the Bishop Blaize, named after the patron saint of the wool trade. Plush was woven at Shutford, and within living memory Joe Alcock had a plush-loom in his cottage in Sibford Gower.

The Friends School when first established had an agricultural bias, the boys working many hours in the fields. There was a farmyard where the concrete playground is today. Some 50 years ago a bold experiment was introduced, a crafts bias, with special emphasis on hand-work; this was, in essentials, a pioneering experiment towards what is known as Secondary Modern education today. Today the Friends School is recognised by the Ministry of Education as a grammar school.

Modern transport and communications, and the mechanisation of farming, have completely changed village life in the past half century. A record of 1878 shows that there were then 58 farm labourers in the village, and many village craftsmen. There were also 13 paupers. Poverty was acute among cottagers, especially in winter.

As early as 1877 a diarist at the Friends School wrote: "We have had a lecture on the telephone and microphone. Conversation was held with a plate 100 feet away and the tune of a musical box was distinctly heard."

In 1896 the first telegraph wires were fixed to connect Sibford with the outside world. Now we have television, motors, telephones, buses. But Man remains a social creature. He needs, perhaps more than ever in a mechanistic age, the company of his kind; he needs to do, to sing, dance, act, talk, listen to others, to learn from them, if he is to be a Man and not a robot enslaved by the machines he has invented. That is why the Village Hall now enters our history.

In the past Sibford had its Choral Society, its brass bands, its Morris dancers. With the coming of the great wars, of motors, radio, and T.V., these tended to die out. But more recently there has been a hopeful revival of interest.

When people join together in communal activities—singing, dancing, lectures, games, drama etc.—they are expressing their enthusiasms, actively and creatively. They are fostering a spirit badly needed in England today, the spirit of action, of pulling together, of doing things for ourselves.



The top of Mannings Hill in 1914

*Have you visited*

## COMPTON WYNYATES?

### MOST FAMOUS TUDOR HOUSE

Built between 1480 and 1520

Surmounted by battlemented walls and twisted chimneys, and at one time surrounded by a defensive moat, it is now the typical peaceful English home. Home of the Marquess of Northampton.

**Open :** March to November 10 a.m. — 12 noon and 2 p.m. — 5 p.m. on Wednesdays, Saturdays and Bank Holidays.

Also Sundays 2 p.m. — 5 p.m. during June to August.

The exterior is well seen at other times from the surrounding fields at a charge of 1s.

Parties over 30, on non-visiting days, by appointment.

**Admission :** House and Gardens 3s. 6d.

## **DUPLICATING**

Circulars, Programmes, Price Lists, Leaflets, Balance Sheets, Etc.

## **TYPEWRITING**

Literary and Commercial, Envelope Addressing.

*Accurate work at reasonable prices. Speedy service*

## **ERNEST G. LANDER**

Round Close Road, Adderbury West, Banbury. (Adderbury 336)

# The Friends' School

The school provides a grammar school education up to GCE 'O' level for boys and girls aged 11-16 years. Fees are at present £213 per annum for boarders and £96 p.a. for day pupils

*To ensure a place applications for admission in September, 1958 should be made immediately to the Headmaster, Hugh W. Maw, B.Sc.*

## Sibford Ferris

---

## The Hasty Leys Herd of Pedigree Landrace

Registered Vaccinated  
Tuberculin Tested  
National Recorded  
Virus Pneumonia Free

Gilts and Boars are usually available at commercial prices

### Richard Neal

Coombe Slade Farm, Brailes, near Banbury  
Telephone Brailes 40

---

---

## ROBINS BROS., LTD.

ESTABLISHED OVER ONE HUNDRED YEARS

*General Ironmongers*

**BANBURY** • **Telephone 2421**

The noted house for  
**QUALITY and SERVICE**

*Your Main Hoover Stockist and  
Calor Gas Agents*

---





*For three generations*

**COVENTRY'S  
LEADING  
JEWELLERS**

Repairs and  
Remounting  
by skilled workmen



*Thousands in Warwickshire and neighbouring Counties are wearing our Engagement and Wedding rings.*

*Mr. John Flinn was making the finest English watches over 100 years ago in Coventry.*

*We stock the best to-day.*

## *Who's who and what's what in Sibford*

SIBFORD GOWER PARISH COUNCIL : Chairman, Arthur Harrison ; G. W. Taylor, W. O. Soden, L. W. Poulton, F. Hall. Clerk, R. W. Penny.

SIBFORD FERRIS PARISH MEETING : Chairman and clerk, Mrs. Gwen Rowntree.

REPRESENTATIVES ON BANBURY RURAL DISTRICT COUNCIL : Ferris, F. J. Lamb ; Gower, L. W. Poulton.

\* \* \* \* \*

SIBFORD GOWER TOWN ESTATE CHARITY : Trustees—M. R. Lamb (chairman), Arthur Harrison (vice-chairman), H. R. Lowe (secretary), G. W. Taylor, F. Hall, W. D. Sabin, W. O. Soden, J. C. Bushell, F. M. Barton, P. R. Lamb.

SIBFORD GOWER ENDOWED CONTROLLED SCHOOL : Managers — L. W. Poulton (chairman), E. V. Dodd (correspondent), Mrs. Rowntree, J. Tanner, A. Harrison, F. Inns. Headmaster, R. W. Penny.

\* \* \* \* \*

## *Places of Worship*

CHURCH OF ENGLAND : Holy Communion—8 a.m., 2nd and 4th Sundays ; 10 a.m., 1st, 3rd and 5th Sundays. Matins—11.15 a.m., 2nd and 4th Sundays ; Sunday School—10.45 a.m., every Sunday. Evensong—6.30 p.m., every Sunday.

Vicar : The Rev. E. J. Blackmore. Lay Readers : K. F. Woolhouse, W. Upton. Churchwardens : H. Poulton, H. West.

METHODIST CHURCH : Sunday School 11 a.m. ; Worship 2.30 p.m. and 6 p.m. Stewards : Mrs. F. J. Greenway, P. Stewart, G. W. Taylor. Sunday School Superintendent, H. M. Stewart.

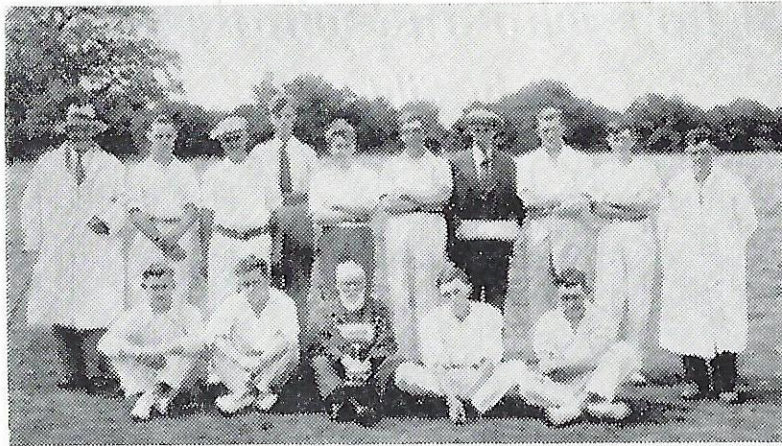
SOCIETY OF FRIENDS : Meeting for Worship, Sibford Gower, Sundays at 11 a.m. ; and at Friends School, Sibford Ferris, 6.30 p.m. in winter, 7 p.m. in summer. Clerk to the meeting : Louie McK. Winter.

\* \* \* \* \*

## *Clubs and Societies*

THE WOMEN'S INSTITUTE : President, Mrs. W. E. Bennett ; Vice-Presidents, Mrs. Leslie Baily and Mrs. H. Salmon ; Secretary, Mrs. F. Hall ; Treasurer, Mrs. H. R. Lowe. Committee meetings, first Tuesday afternoon in each month. Members meetings, second Tuesday at 2.30 p.m. in winter, 6.30 p.m. in summer.

THE SIBFORD PLAYERS, drama club : President, Leslie Baily ; Chairman, Jack Briggs ; Sec., Miss P. Foster ; Treas. Mrs. Wealsby jnr. ; Committee members, Miss Sheila Lines, J. Sabin. Meetings weekly, Tuesdays 7.30 p.m. First production, Village Hall, December 6th.



The Sibford cricket team, the first time it won the Banbury League competition 1932.

From the left, back row : Horace Salmon, Justin Poulton, W. L. Poulton, F. Sabin, F. Inns, H. Kaye, F. Barton, E. Herring, F. Haynes, G. Keyte.

Front H. Long, H. Poulton, the late L. T. Poulton (President), B. W. Lamb, F. Berry.

**SIBFORD BOWLS CLUB :** President, H. M. Stewart ; Chairman, R. Gaddes ; Captain, F. Hall ; Vice-captain, W. Morbey ; Sec. F. E. Bloxham. Matches are held at Sibford Gower (three rinks) and away, between May and September. Annual general meeting in November each year.

**SIBFORD OLD SCHOLARS' ASSOCIATION,** local group : Chairman, Leslie Thomas ; Sec. Patrick Flinn ; Treas., Mrs. Kate Long. Meets on the second Thursday of each month during autumn and winter.

**COMMUNITY DANCING :** Old-time, square, and folk dancing. Details of future activities from Alan Wicksteed, Sibford Ferris, or Leslie Baily, Sibford Gower.

**SIBFORD SINGERS CHORAL SOCIETY :** Chairman, Henry Poulton ; Sec., Miss A. M. Inns ; Treas., Miss Gatty ; conductor, Clive Penman ; committee : Mrs. D. Sabin, Mrs. Cliff Hodges, J. Bushell. Rehearsals, Mondays 7.45 p.m.

**SIBFORD FOOTBALL CLUB :** President, Leslie Baily ; Vice-Presidents, Captain Young, Messrs T. Harris, W. Morbey, J. Canning, H. Maw, E. V. Dodd ; Chairman, W. Haines ; Treas., H. Haines ; Captain, J. Masters.

**SIBFORD TABLE TENNIS CLUB :** Sec., Miss J. Lamb ; Treas., E. Stewart. Matches played in Banbury Table Tennis League (three teams). Match nights, Weds. and Thurs.; practice, Monday.

**SIBFORD HORTICULTURAL SOCIETY :** President, Dr. Taylor ; Vice-Presidents, E. C. Flinn, E. V. Dodd ; Chairman, Commander Lang ; Vice-chairman, Rev. E. J. Blackmore ; Treas., Dr. Davenport-Jones ; Sec. S. J. Sabin. Winter show, November 30th ; Spring show, April 12th ; Annual show, August Bank Holiday Monday.

**SIBFORD WOMEN'S BRIGHT HOUR :** President, Mrs. Winter ; Vice-Presidents, Mrs. H. Poulton, Mrs. W. Morbey ; Treasurer, Mrs. T. Tarver ; Secretary, Mrs. H. Salmon. Meets Friday, 2.30 p.m.

**THE BRITISH LEGION :** President, Dr. H. Taylor ; Chairman, F. Hall ; Treasurer, W. Morbey ; Secretary, M. R. Lamb.

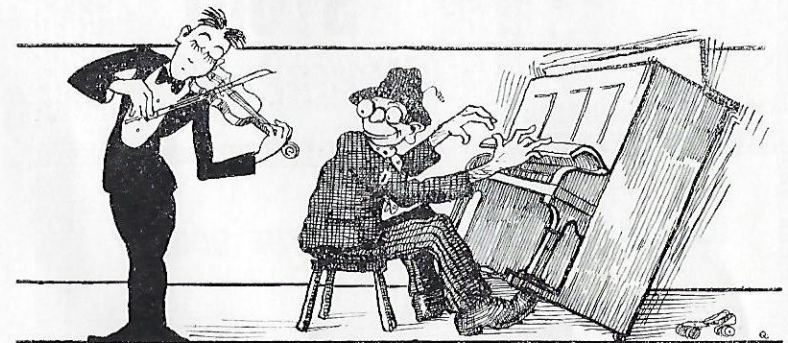
**SIBFORD CRICKET CLUB :** President, H. M. Stewart ; Chairman, P. J. Stewart, Secretary, F. Inns (Jnr.) ; Captain, F. L. Woolgrove ; Vice-Captain, E. H. Stewart. (Members of Banbury and District Cricket Association).

**SIBFORD FARMING CLUB :** Chairman, G. R. Alcock ; Vice-chairman, A. Colegrave Secretary and Treasurer, G. White ; Assistant Secretary, G. Miller ; Committee Representatives, Hook Norton, T. S. Hiatt, E. Johnson ; Sibford, T. Harris ; Swalecliffe, P. Copeman ; Shutford, W. Rudge, R. Gaydon ; Shenington, R. Stratton ; Epwell, W. Gilkes.

---

*We wish all our Clubs  
and Societies*

**A HAPPY FUTURE**



— in the Village Hall

CHESHAM & BRACKLEY BREWERIES  
LIMITED  
A MEMBER OF THE TAYLOR WALKER GROUP  
BRACKLEY BREWERY, NORTHANTS

**DRAUGHT  
&  
BOTTLED  
BEERS**

**RESERVE**  
Special Pale Ale

**CANNON  
STOUT**

**OBTAINABLE THROUGHOUT THE COUNTY**

*With the  
Compliments of*

**MARKS**

and

**SPENCER**  
LTD.

# TANNER'S SERVICES

*Travel by 'bus in comfort between  
Banbury and Sibford*

	MONDAY to FRIDAY								SATURDAY			
	TH am	TH pm	TH pm	TH NTH pm	NTH SCH	NTH pm	NTH pm	NTH pm	am	pm	pm	p m
Banbury, Wh. Hart Hotel	11 51	0 2	45 4	0 4	15 5	15 6	15	15	10 0	4 0	8 15	10*30
Broughton	1110	1 3	2 50	4 5	4 21	5 21	6 21	...	10 5	4 5	8 20	10 35
Lower Tadmarton	1114	1 3	2 55	4 10	4 24	5 24	6 24	...	1010	4 10	8 24	10 39
Upper Tadmarton	1118	1 12	2 59	4 15	4 27	5 27	6 27	...	1015	4 15	8 28	10 43
Swalcliffe	1122	1 16	3 4	4 19	4 31	5 31	6 31	...	1019	4 19	8 33	10 48
Sibford Gower	1130	1 23	3 15	4 29	4 39	5 39	6 39	...	1030	4 30	8 43	10 58

	am	am	TH	TH	TH	MWF	TH		am	am	pm	pm	pm
	am	am	am	am	pm	pm	pm		am	am	pm	pm	pm
Sibford Gower	7 10	7 55	9 45	1140	1 25	2 45	3 20	...	7 10	7 55	1 25	6 10	9 0
Swalcliffe	7 19	8 4	10 5	1155	1 35	2 54	3 23	...	7 19	8 4	1 35	6 15	9 5
Upper Tadmarton	7 23	8 8	1010	12 0	1 40	2 58	3 27	...	7 23	8 8	1 40	6 20	9 10
Lower Tadmarton	7 27	8 12	1015	12 5	1 45	3 23	3 31	...	7 27	8 12	1 45	6 25	9 14
Broughton	7 31	8 16	1020	1210	1 50	3 6	3 36	...	7 31	8 16	1 50	6 30	9 19
Banbury, Wh. Hart Hotel	7 37	8 22	1025	1215	1 55	3 12	3 41	...	7 37	8 22	1 55	6 35	9 24

\*—Waits until approx. 10.35 p.m. for Theatre traffic. MWF—Monday, Wednesday, Friday. NTH—Not Thursday. SCH—Schooldays only. TH—Thursday.

## Arthur W.

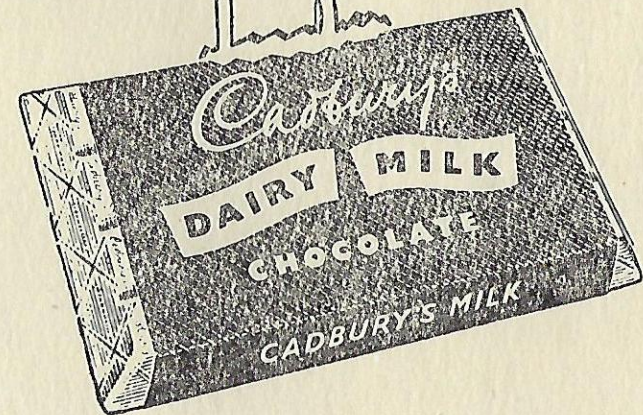
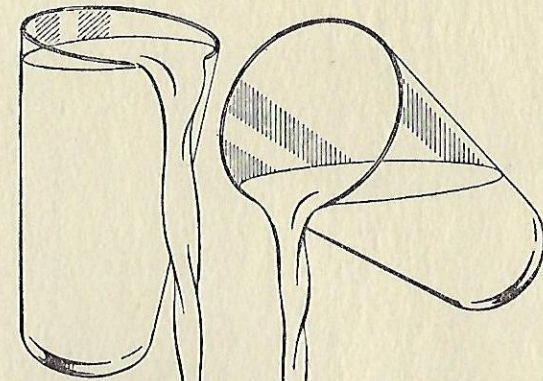
# HARRISON

### SIBFORD GOWER

## Building Contractor

Swalcliffe 341

# Taste the cream



*There is a glass and a half of full  
cream milk in every half pound*