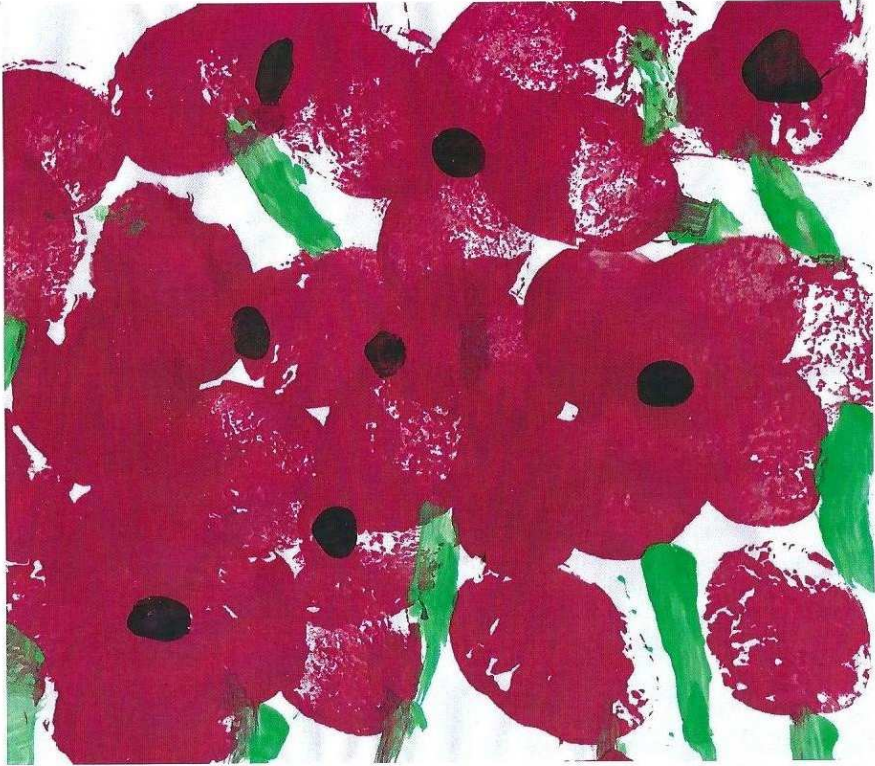


# SIBFORD SCENE



JULY/AUGUST 2015

No. 374

SIBFORD FERRIS PARISH COUNCIL MEETING  
Monday 6 July, Sibford School Sports Hall Classroom, 7.45 pm

CHURCH 175<sup>TH</sup> BIRTHDAY CELEBRATIONS  
Saturday 11 & Sunday 12 July

SIBFORD GOWER PARISH COUNCIL MEETING  
Tuesday 14 July, Sibford Primary School, 8pm

COFFEE MORNING IN AID OF HOLY TRINITY CHURCH  
Saturday 18 July, 2 Barley Close, Sibford Gower, 10 - 12 noon

SUMMER HORTI SHOW  
Saturday 29 August, Village Hall, 2.30 - 4 pm

DAVID ALLEYN'S ROCKOUSTIC & FRIENDS, BAR & BBQ  
Saturday 29 August, Village Hall, 7.30 pm

# WELCOME TO SIBFORD

If you are a new resident of Sibford, or have new neighbours who have not yet received their copy of the *Welcome to Sibford* booklet, please call Ivor Hopkyns on 788367 (Gower and Burdrop) or Nic Durrant on 788865 (Ferris) and a copy will be delivered to you. We hope the information will help to make you feel at home by telling you about the services, schools, clubs and societies that are currently active in the villages.

## LETTERS & NOTICES

### **Important changes to library service**

Please see page 12 for important changes to the Sibfords' mobile library service taking effect this month.

### **Charity Curry Lunch**

Thank you to all who participated in the Charity Curry Lunch on 7 June in aid of the Red Cross Nepal Earthquake Appeal. After food costs we made a donation of £667. Many thanks too to those who, unable to be there, made generous donations. I am also very grateful to everybody who helped me so much on the day in so many ways. *Diana Hughes*

### **Christian Aid Week**

Thanks to the generosity of those who gave their time to collect and all of you who donated, a total of £1321 was raised in the Sibfords this year. Some of the money will be used to buy cows to provide Ethiopian families with an alternative way to make a living, just one example of the projects supported by Christian Aid. Your support makes a difference and is very much appreciated.

**Sibford Primary School** is still looking for a caretaker, 15 hours a week. Contact E: [Office.3005@sibford-gower.oxon.sch.uk](mailto:Office.3005@sibford-gower.oxon.sch.uk) or T: 01295 780270.

**Sibford Mums, Tots and Babes** are holding a Nearly New Baby to Pre-School Sale on Saturday 4 July, 2.30 - 4 pm at the Village Hall. Come and grab a bargain - clothes, toys, books, games, equipment and more.

### **Sibford Scene - September issue**

As this issue of the Sibford Scene is a combined July/August issue, the next deadline is on 18 August for the September issue, so please plan ahead if you're going on holiday. Going forward, the deadline for submissions will be the 18th of each month.

### **Special thanks**

To Hugo Seely for so gallantly giving up his ad space last month in order to accommodate the account of the visit to the war graves.  
No favouritism :-)

## FIVE MINUTES WITH ...

*Continuing our new monthly column to help us get to know our neighbours.*

### **THIS MONTH: MURIEL CHANDLER**

*Muriel has been secretary of the Village Hall, the Sibford Scene's Advertising Secretary, and also served on Sibford Gower's Parish Council before taking on the role of Village Hall caretaker 25 years ago this year. Muriel has two daughters, four grandchildren and three great grandchildren, and spends her 'retirement' looking after the Hall, writing the village news for the Banbury Guardian, helping her daughters and, more recently, looking after her neighbour's beagle, who is a lovely companion.*

#### **What brought you to the Sibfords?**

I came to the Sibfords in 1989 as Cook/Housekeeper to Vera and Ernest Jones, then took on their company marketing and looking after the live-in trainees on their courses. An early memory of the village was going on pub crawls in a shooting trailer towed by 'Tractor Mike', selling large amounts of raffle tickets for the Village Hall's Annual Fayre.

#### **What is your earliest memory?**

As a very small child running in the middle of a pack of hounds in the hunting yard where my father was Chief Whipper-In, and hunting on my little pony. Sadly, my father died when I was 7 years old.

#### **What was the first record you ever bought?**

Probably Shirley Bassey's '40 Greatest Hits' in the '50s.

#### **Tell us something surprising about yourself**

I don't think there is anything very surprising about me, but perhaps my 20 year career in the oil world where I started as Secretary to the MD and finished as Company Secretary. And recently I sat for an art class in the Hall and have a lovely portrait of me (but really the artist was very kind and it looks more like my daughter!)

#### **What do you consider to be your best-ever achievement?**

When all the Directors of the oil company I worked for were away and couldn't be reached by 'phone and I was offered a very good deal to purchase a shipload of crude oil. With only 24 hours to make up my mind, I went to our elderly Chairman and told him the amount of money we could make, and he backed me. I did the deal and when the Directors returned there was a very large amount in the bank and I was given the deposit on my first house. Other than that, it is having two great daughters and being very proud of my family.

#### **Finally, what's the best thing for you about living in the Sibfords - and is there one thing you would change?**

I love the Sibfords because of all the lovely people who live here and look after me if I ever need help. I have moved 25 times in my life but hope I never move again! The only thing I would change is the speed of the cars that come down Pound Lane!



## NATURE NOTES

May 26 - My granddaughter found a badger asleep in an empty pig pen and, thinking it might be ill, offered it some sheep nuts but it showed no interest. When she fetched it a bit of salmon cat food it burst into action jumping on to some bales and out through a window.

May 27 - The badger must have been back overnight as it had made a nest of hay in an adjoining building.

May 30 - I still don't know whether the bumble bees nesting in our hollow gate post are the sort that like nesting in bird boxes, but they have sealed the nest's entrance leaving two holes for them to pass through. In spite of this there are more bees buzzing round the entrance than I have ever seen with a bumble bee nest. They are also livelier than other bumble bees and have stung three people, but the stings have not had any lasting effect. Being at the top of a gate post they are hopefully out of the reach of badgers that have in past years dug out many bumble bee nests from the rough grass of our paddock.

May 31 - I have been told there were up to 30 red kites following the silage machinery in Sibford Gower yesterday and there are still a few around today. I expect they were getting voles etc that were disturbed by the machinery.

June 8 - I saw a painted lady butterfly in the garden.

June 11 - There was a hummingbird hawk moth in a neighbouring garden today.

June 16 - A slightly warmer evening and at 10 pm there were more bats around than I have seen this year. Cock bullfinches still come frequently to our bird table to take sunflower hearts which they chew up. I wonder whether they regurgitate them to feed their nestlings.

June 17 - The young great spotted woodpecker feeding from our nut feeder this morning was as big as an adult. It seemed very much at home so perhaps it has been coming early and this morning stayed until I got up.



### Vanda's Ironing Service

Covering the Sibfords and surrounding villages

01295 780071 07776 101 571

sibfordironingservices@gmail.com



Per basket\* collected and returned by us - £20\*\*

Per basket\* delivered and collected by you - £15

#### Prices per item

Shirts/Blouses - £1.50 Skirts/Trousers - £1.35

Sweatshirts/Long-sleeved tops - £1.25 T-shirts/short sleeved tops - £1.10

#### Bedding - per set

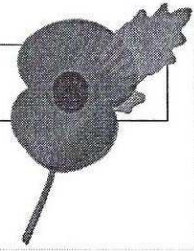
Super King - £4.00 King - £3.00 Double - £2.50 Single - £2.00

\*basket - (level basket) = one full machine load/approx.

3 carrier bags full or per item, if less than a full basket

\*\*delivery within 10 mile radius of Sibford

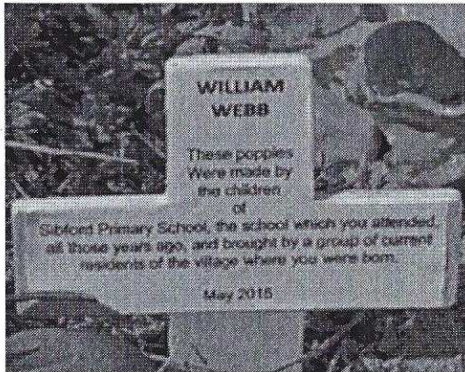
## WAR GRAVES VISIT



Thirteen bleary-eyed travellers arrived at the War memorial at 7 am on Sunday 17 May where the Rector led us in worship, following which we gathered at the grave of William Barton to lay poppies made by the pupils of the Primary School and to hear his history followed by a WW1 poem. This was repeated at all the graves we visited later, where we laid a small cross (*pictured*) explaining the link between the school's poppy makers and the young men, all of whom had been educated there over 100 years earlier.

We crossed to France by ferry and arrived on the outskirts of Ypres to visit the grave of Horace Hawtin at Lijssenthoek cemetery. Our wonderful guide, Simon, filled in all the military details during our visit, telling us how each of 'our men' died, bringing home to us the cost of that ghastly war.

We went to our hotel in Ypres then, an excellent one with very good and plentiful food. After supper we went to the Menin Gate for the Last Post ceremony which was exceedingly moving. The people named there are those British and Commonwealth troops who died in Flanders and have no known grave. There are 54,896 of them. This was followed by a visit to the memorial to lay poppies and a cross in the memory of Thomas Borsberry, to hear his story and read a poem.



The next day was spent on the Somme visiting graves. It was a comfort to see that the graves bearing the remains of the Sibford men are in lovely peaceful places, and so very well kept. We placed an extra cross on the grave of Thomas Dyer - David and Robin Spicer's great uncle - and on which Robin had inscribed a message. We had lunch at a café where we explored a WW1 trench in the grounds.

The highlight of the afternoon was the Newfoundland Memorial where some trenches remain, and where the first day of the battle of the Somme was so disastrously fought, with the loss of 58,000 men in one day.

*continues / ...*



## WAR GRAVES VISIT

We made special visits to the graves of men who did not come from Sibford, but who were important to our party. They included the grave of Evelyn Phillip's uncle, John Widdows, at Duissans cemetery, and the Thiepval memorial where Beryl Sabin's uncle, Frank Clifford, and Anne Spackman's great uncle, William Harris, were commemorated. Again, these carried the names of men with no known grave: 72,195 of them.

Charlotte Bird had purchased one of the poppies from the Tower of London exhibition and chose to leave it on the grave of George Bodfish, whose story was particularly sad because he had been married 7 days when he went back to the front and never returned home. We left his poppy rising proudly above the poppies made by the children.

Our last day was spent in the Ypres Salient again, where we visited a German cemetery and found tributes to the German dead from their relatives: a poignant reminder that losses were keenly felt by all nations. We went to Tyne Cot cemetery too, hearing about the battles fought in the places we passed.

Finally, we visited the grave of William Webb at Outtersteene before setting off for the ferry home.

It was an amazing trip, and we all benefitted from the visit, the warmth of our fellow travellers, and the chance to get to know one another better.

Special thanks to Sara Thomas who made all the travel arrangements, including the comfortable bus with its lovely driver, Terry, as well as the hotel and itinerary. Above all she found Simon for us who was such a well-informed guide. Without him we would have found the graves, but not the wealth of knowledge which he shared with us and which made it all come alive.

*Judith Weeks*



**ANN WOOLGROVE**  
Historica • curtains • soft furnishings

**BESPOKE DESIGN SERVICE FOR  
CUSTOM MADE FURNISHINGS**

- Curtains, Blinds & Cushions
- Loose covers
- Headboards & bedspreads
- Curtain poles & tracks
- New sofas & chairs & re-upholstery
- Lampshade making

01295 768145  
info@annwoolgrove.com  
www.annwoolgrove.com

## NEW ARTS HUB

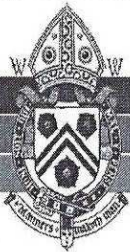
Sibford School is launching a specialist Adult Arts Hub offering evening classes at the school from September. You can read more about the Arts Hub initiative on page 14.

Arts Hub Classes include:

- Monday 7 September: start of **Painting and Drawing** Classes (including some life drawing) - £60 for six-week session. Mondays 7 - 9 pm.
- Tuesday 8 September: start of **Pottery** Classes - £60 for six-week session. Tuesdays 7 - 9 pm.
- Thursday 10 September: start of **Textiles** Classes - £60 for six-week session. Thursdays 6.30 - 8.30 pm.

All classes take place at Sibford School. To register or for further details, please contact Ali Bromhall

E: [abromhall@sibfordschool.co.uk](mailto:abromhall@sibfordschool.co.uk) or visit the website:  
[www.sibfordschool.co.uk/community/classes-clubs/](http://www.sibfordschool.co.uk/community/classes-clubs/)



THE  
WYKHAM  
ARMS  
SIBFORD GOWER

Damian and Debbie invite you to enjoy the atmosphere of our 16th Century thatched Inn.

- Bar and a la carte menus available lunch & dinner
- Excellent Sunday lunch - to suit the weather!
- New food and wine takeaway menu
- Wednesday steak and wine night £15
- Selection of fine wines and real cask ales
- Happy hour and a half every Wednesday evening
- Gift vouchers available

Opening Times

12.00 am - 3.00 pm

6.00 pm - 11.30 pm

Open all day Saturday & Sunday for cream teas

Bar only Sunday Night

Closed all day Monday (*except bank holidays*)

Temple Mill Road, Sibford Gower, Banbury OX15 5RX T: 01295 788808/07  
E: [info@wykhamarms.co.uk](mailto:info@wykhamarms.co.uk) [www.wykhamarms.co.uk](http://www.wykhamarms.co.uk)

## SIBFORD'S GOT TALENT

### **Jonquil Sabin - Q @ Temple Mill**

A pile of old gate posts and some elm boarding left over from a barn conversion was the motivation behind Jonquil Sabin's successful business venture, Q @ Temple Mill. That, and a persuasive kick from fellow Sibford artist, Nic Durrant.



Made from wood sourced on or near the Sabin's family farm, Jonquil's distinctive long-handled wooden boards are proving popular with customers from all over the world, as well as local residents who want to preserve a little bit of the Sibfords for themselves.

*"I'd always liked the look of those unusual long-handled bread boards, so I thought I'd have a go at making one," Jonquil says, "It was an impulse to go on a course and learn how to work with wood, but I loved it immediately and trusted my instinct as it just felt right. I soon realised it might also make a good business."*

Jonquil makes her boards in the workshop that used to house the old mill wheel at Temple Mill where the Sabins have farmed for generations. *"It's such a privilege to make use of the wonderful old workroom at the farm. It feels as though it has been sitting here just waiting to be brought back to life."* says Jonquil, who uses some of the same hand tools that husband Bill's father and grandfather used before her.

Jonquil crafts her boards from elm, apple, ash and oak – each with unique markings signifying age, prevailing wind and times of drought - adding to the character of each board and meaning no two are ever the same. As well as using seasoned

continues / ...



## SIBFORD'S GOT TALENT

wood from the farm's own stockpile, she sources wood from a local tree surgeon and woodmen in Hook Norton and Swerford where the history of the trees are known. Each board takes hours of shaping, rubbing down and oiling and they are often snapped up before the final coat of oil is dry.

The multi-purpose boards have all kinds of uses – from bread, chopping and cheese boards to place mats and ornaments – in fact, Scotland recently classed one as an offensive weapon! Jonquil has started to expand her range too, making cooking spoons which are selling fast at nearby Whichford Pottery.

Creativity runs in the family it seems: Jonquil's great grandfather painted for the Staffordshire potteries, while one of her sisters, Trilby, runs ArtyParty in London and the other, Myrica, is a talented artist specialising in interiors paint effects and finishes. The daughter of Warwickshire farmers, Jonquil studied at Agricultural College and jokes that she had a successful career in the stock market – she managed Thame Livestock Market - before moving to the Sibfords and marrying Bill.

*"I was looking for something different to do but never really expected to find it right here at home. I've got loads still to learn, but I love the challenge and there's a never-ending supply of wood out there waiting for me."*

Now in constant demand, Jonquil sells her unique boards at local events and exhibitions and can also be seen at Deddington Farmers' Market in the church on the fourth Saturday of every month. Contact Jonquil by email at E: [jonquilsabin@hotmail.co.uk](mailto:jonquilsabin@hotmail.co.uk)

*(With thanks to Annie Skowronska)*

### **TALKING OF TALENT ... JUGGLERS WANTED**

*Are there any jugglers in the Sibfords? I've been juggling for 10 years and am still not very good, so I thought it might be a splendid idea to form a group where we could all have a bit of fun and improve our skills. All ages and abilities welcome. Call Tony on T: 01295 780490 or E: [ctc@macace.net](mailto:ctc@macace.net) Happy Juggling!*

## VILLAGE HALL NEWS

Many thanks to all who helped with the Dog Show, either setting up, at the Show, and clearing up. We raised approx £300 which will go into the Village Hall Refurbishment Fund. The Top Dog Trophy was won by *Murphy*, shown by Ciara Mahoney and owned by Susan Mahoney from Tadmarton. Winner of the Reserve Trophy was *Vinnie*, shown and owned by Michael Lunn of Shutford. Winner of the Young Handler Trophy was James Morbey of Sibford Gower showing *Pepper*. Well done to all those dogs and owners who took part.

SUMMER REWIND presents David Alleyn's ROCKOUSTIC AND FRIENDS on Saturday 29 August from 7.30 pm. Bring your friends and family and enjoy the music. Licensed Bar and BBQ.

The VILLAGE FAYRE is on Saturday 26 September, starting with a FANCY DRESS competition at 2.30 pm in two classes - children 5 yrs and under, and 6 yrs to 11 yrs. The theme is *Film and TV Characters*. There will be lots of games, competitions, stalls, teas and cakes. We welcome donations of cakes for the cake stall and bottles for the tombola. Contact Ginny on T: 01295 780373 for collections.

- Bespoke bathrooms, kitchens and carpentry
- Fitted furniture
- Plumbing and electrical works
- Home improvements and renovations



**Hugo  
Seely**

Trading in the Sibfords since 1992

From concept to completion

*Exceptional value,  
exceptional service*

T: 01295 780355

or 07773 319239

E: [hugo.seely@gmail.com](mailto:hugo.seely@gmail.com)

*Excellent references*

## VILLAGE HALL NEWS

Alongside the Fayre attractions we are holding a CAR BOOT/ TABLE TOP SALE in the field. Pitches at £6 each are limited so please book early. Contact Joan on T: 01295 788410.

FILM NIGHTS On Thursday 23 July we are showing *Still Alice*, a touching story about coming to terms with Alzheimer's Disease. On Thursday 20 August join us for the hilarious *What We Did on Our Holiday*. As usual, doors open at 7 pm and the film starts at 7.30 pm. Hot and cold drinks available, or you are welcome to bring your own wine. Entry £2 for adults, £1 for students or children.

VILLAGE HALL LOTTERY WINNERS - 1st Mrs D Court, 2nd Mr C Cullen, 3rd Mrs K Winter, 4th Mr T Byrne (who now lives in Lincs!) Congratulations to all.

SIBFORD HALL PROMOTIONS - Keep an eye on the website: [thethesibfords.org.uk/sibford-hall-promotions](http://thethesibfords.org.uk/sibford-hall-promotions) for info on forthcoming events and for VILLAGE HALL HIRE, contact Ginny Bennett on T: 01295 780373 or via the website.

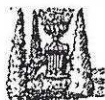
LOGS • HAY •  
• STRAW •  
GARDEN MANURE

Antony Sabin  
T: 01295 788421

Bed & Breakfast  
**AGDON FARM**  
**Nr Brailes**  
Comfortable rooms  
in old stone farmhouse  
Maggie Cripps  
T: 01608 685226

### YOGA

Sibford Village Hall  
Tuesday 9.00 - 10.00 am  
Thursday 7.00 - 8.00 pm  
Friday 9.00 - 10.00 am  
Beginners welcome  
Enquiries to:  
Juliette T: 07703 836 856  
E: [Juliette53@btinternet.com](mailto:Juliette53@btinternet.com)  
Drop-in £7.00



**BED & BREAKFAST**  
Buttslade House, Sibford  
Gower offers supremely  
comfortable en suite  
accommodation in the  
charming setting of a tranquil English  
country garden. Contact:  
Diana Thompson T: 01295 788818  
E: [diana@buttsladehouse.co.uk](mailto:diana@buttsladehouse.co.uk)  
[www.buttsladehouse.co.uk](http://www.buttsladehouse.co.uk)



# SIBFORD FERRIS PARISH COUNCIL

**Sibford Ferris Parish Council is looking to co-opt a Councillor** following the resignation of Joanne Connor. This is an ideal opportunity for you to get involved in your village.

You must be 18 or over, be registered to vote in the parish or have lived or worked here in the last 12 months. The most important requirements are that you have a keen interest in matters affecting people who live or work in the parish, are able to communicate effectively with residents and fellow councillors, and have time to attend about 7 evening meetings per year. More information at [thesibfords.org.uk/sfpc-vacancy](http://thesibfords.org.uk/sfpc-vacancy) or from Parish Clerk, Anita Spencer T: 788557. To apply, please contact the Clerk or use the form on the website. The closing date is 15 July.

## MOBILE LIBRARY CHANGES

Sibford Ferris and Sibford Gower Parish Councils have been advised that, from the beginning of July 2015, the mobile library service will introduce a new schedule and there will no longer be a stop in Sibford Ferris. The final stop in Sibford Ferris will be on Wednesday 1 July.

The new schedule will operate on a 2-weekly basis and moves from a Wednesday to a Tuesday.

The first rescheduled library bus visit will be at SIBFORD GOWER PRIMARY SCHOOL on TUESDAY 14 JULY from 2.30 – 3.30 pm, and every 2 weeks thereafter. Please see the outside back cover for forthcoming dates.

### JENNIFER WEALSBY - ART & DESIGN

*Tutor of drawing and painting classes since 1988*

Mondays 10 -12 am, Sibford Village Hall, small hall - pastels  
Fridays 1 - 3 pm, Sibford Village Hall - drawing and watercolour  
also

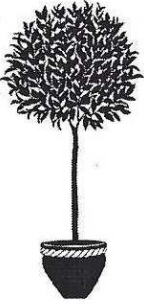
Wednesdays 9.30 - 11.30 am, Churchill Village Hall

Wednesdays 1 - 3 pm, Spelsbury Memorial Hall

Fridays 9.30 - 11.30 am, Holly Tree, Deddington

(All drawing and watercolour classes)

**To register your interest or find out more, please ring  
01608 730401 or email [jgw4art@gmail.com](mailto:jgw4art@gmail.com)**



## SIBFORD HORTI SOCIETY

### **Sibford Horti Show - 29 August**

There is no meeting in July, so the next event is the Sibford Horticultural Show on Saturday 29 August from 2.30 – 4.00 pm at the Village Hall.

Entry night is on Wednesday 26 August from 7.00 pm – 8.00 pm in the Small Hall.

Your copy of the Show schedule should be delivered with this issue of the Sibford Scene. If you do not receive one please contact Gil Soden (T: 780543) or Helen Lamb (T: 780380) and we will get one to you. Please do have a look to see what you can enter - the more entries, the better the Show!

### **Garden Visit - 10 June**

On Wednesday 10 June, members of the Horticultural Society enjoyed an evening visit to a magnificent garden, The Court House, at Stretton-on-the-Fosse. We were shown around and generously entertained by the charming owners, Mr and Mrs Christopher White. Anyone who missed the visit can see the garden when it opens for the NGS on Wednesday 22 July from 2 - 6 pm. Well worth a visit.

## THIS MONTH IN YOUR GARDEN - JULY

- Keep deadheading roses, and bedding plants
- Cut back hardy geraniums when they have finished flowering
- Start pruning the lanky growth on wisteria
- Net ripening fruit against birds
- Sow winter spinach and autumn and winter salads
- Plant out leeks
- Clip hedges once the birds have finished nesting
- Prune plum trees after harvesting the fruit
- Ventilate and shade greenhouses and conservatories
- Just time to sow more French or runner beans

## SIBFORD SCHOOL RECEIVES PRAISE FROM INSPECTORS

Sibford School in the Ferris offers 'a well-planned curriculum that is stimulating and of high quality' and that enables **all** pupils 'from the youngest through to those in the sixth form to make good progress', according to independent school inspectors.

In a report published by the Independent Schools Inspectorate, the school is praised for providing an environment that enables pupils to 'develop in confidence, self-esteem and tolerance'.

The standards achieved in Early Years are described as 'excellent'; the contribution of curricular and extra-curricular provision is described as 'excellent'; and the spiritual, moral, social and cultural development of pupils is described as 'excellent'.

The quality of teaching is described as 'good with many examples that were excellent' enabling pupils to 'make good progress in their understanding, in the development of their skills and in the acquisition of new knowledge'.



Michael Goodwin, head of Sibford School, said: "*The report is the result of a four day inspection involving eight inspectors and we couldn't be happier with the findings ... especially as they offer praise right across the board.*"

## SIBFORD LAUNCHES ADULT ARTS HUB

Sibford School is to launch a specialist Adult Arts Hub in a move that will see its facilities become more available to the general public. *See page 7 for full details.*

From September, the school will offer evening classes in Painting & Drawing (Mondays), Pottery (Tuesdays) and Textiles (Thursdays). Based in Sibford's purpose-built Art School, spaces are limited. To register, contact Ali Bromhall T: 01295 78121 or E: [abromhall@sibfordschool.co.uk](mailto:abromhall@sibfordschool.co.uk)



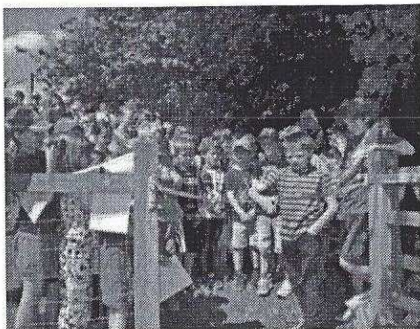


## SIBFORD GOWER PRIMARY SCHOOL NEWS

On Sunday 7 June, the school community and friends gathered in glorious sunshine for the Grand Opening of The Orchard Project at Sibford Gower Primary School. Guests included Alwyn, an ex-pupil returning after 45 years, who presented the school with an owl box, and gave an engaging talk on local wildlife that might visit the Orchard.

Visitors spent an enjoyable afternoon with plentiful supplies of tea, cake and Pimms. A nature quiz guided the children around the Orchard, and binoculars enabled a closer look at the stunning view across the valley.

The Orchard was officially opened by Harry Gaal, a Year 5 pupil who presented the school with two bird boxes and a bird table that he had made in his dad's workshop.



Our dream of creating this stunning learning space became reality thanks to the hard work and dedication of parent volunteers. Julian and Amanda Ransom, whose children attend the school, began working with head teacher Jane O'Sullivan to create "The Orchard Project" in February, funded by our hard working and dedicated PTA.

The Orchard provides a beautiful learning environment for pupils. Plants and wildflowers are becoming established and insect

habitats provide a focus for exploration. The Orchard is perfect for helping pupils understand the value of the natural environment, and the importance of caring for our natural world.

### Job Opportunity at Sibford Gower Primary School

Do you have a Level 3 qualification in either Playwork or Early Years/Childcare?  
(or are you interested in achieving one?)

We have an opening for a  
Play Leader at our After School Club,  
caring for children aged 4 to 11  
from 3pm to 6pm Monday to Friday.

To find out more please email  
office.3005@sibford-gower.oxon.sch.uk  
or call the school office T: 01295 780270

To find out more about this wonderful project taking place in the heart of our village community, please visit our school website at: [www.sibford-gower.oxon.sch.uk](http://www.sibford-gower.oxon.sch.uk)

## TERRY 'THE FISH'

Many Sibford residents already know how lucky we are to enjoy spankingly fresh fish and seafood deliveries direct from Grimsby market to Sibford Village Hall each Monday, and so the Sibford Scene was sad to learn that Terry Martin has been diagnosed with Huntington's disease, forcing him into early retirement.



Regulars to the fish van will know Terry's niece, Nikki Rayner (*pictured left*), who happily for us has agreed to take over the business. We will all miss Terry's cheery smile and friendly service and send him our best wishes as he copes with his early

retirement - although he's clearly not wasting any time judging by this photo of him with new friend Paris Hilton that came across the Sibford Scene's desk recently ...

It's business as usual for **Quality Fish from Grimsby Market**, with Nikki continuing to visit Sibford every Monday from 4.00 pm to 5.30 pm at the Village Hall car park. The fish and seafood is brought at Grimsby Market at 7.00 am on Monday mornings and Sibford is Nikki's first stop. Nikki takes orders from her website at: [www.qualityfishgrimsby.co.uk](http://www.qualityfishgrimsby.co.uk) or you can call her on T: 07871 879197.



**FARMHOUSE  
BED & BREAKFAST  
GRANGE FARM, SWALCLIFFE**

*Enjoy warm hospitality and peaceful surroundings in our comfortable 18th C farmhouse*

CONTACT BARBARA TAYLOR

T: 01295 780206 or 07712 895728  
[www.swalcliffegrange.com](http://www.swalcliffegrange.com)

**QUALITY FISH DIRECT  
FROM GRIMSBY MARKET**

Proprietor: Nikki Rayner

T: 07871 879197

[www.qualityfishgrimsby.co.uk](http://www.qualityfishgrimsby.co.uk)



Freshest fish and shellfish direct from Grimsby to Sibford Village Hall EVERY MONDAY from 4 'til 5.30 pm.



Unfortunately the Speaker, Gillian Hawtin, was unable to be with us, but we had an interesting meeting thanks to Barbara Crabtree and Lynda Conway. Barbara gave a colourful account of her day with 8,000 other WI ladies at the NFWI Garden Party at Buckingham Palace on 2 June. Lynda described our most enjoyable day at Cropredy Village Hall on 4 June, when Cropredy WI hosted the showing of the WI National AGM screened live from the Albert Hall with The Queen, The Princess Royal and The Countess of Wessex in attendance. During the lunch break we were served a delicious cold meal.

Members were reminded of events during the Summer. On 21 July, we are joining Hook Norton WI for a coach trip to Highclere Castle. On 11 August, a tour of the Guide Dog Breeding Centre near Leamington Spa. Tea at the Wykham Arms on 8 September. The Oxfordshire Federation Banner Parade and Service at Christ Church Cathedral, Oxford on 15 September. Sibford WI, after 87 years without a banner, will at last have one: Mollie Mulley is currently stitching away and nearing completion.

### Miss 'T' Catering

Catering for events including  
Anniversaries, weddings,  
christenings, birthday  
parties, funerals  
and private dinner parties.

~.~.~

Also available

Cutlery and crockery hire.  
Contact Victoria Taylor on:  
Mobile T: ~~07841 910037~~  
Home T: 01295 788924

Members judged the competition for a ceramic plant container:

- 1<sup>st</sup> Kathleen Winter
- 2<sup>nd</sup> Rosemary Neal
- 3<sup>rd</sup> Valerie Taylor

Val Powell was in charge of serving tea and tempting cakes.

July 14 is the date of our Garden Meeting at the home of Jan Warner. If wet, Jan has the space to accommodate us indoors.

*Glennis Hardman*

780206<sup>17</sup>



## SIBFORD CRICKET CLUB

The annual Bert Gilbert Memorial Cricket Match takes place this year at Sibford School on Sunday 5 July at 2.00 pm. As in previous years a number of current and veteran players will be involved. This is a major fundraising event and helps to maintain this village institution. Why not come along to enjoy the cricket, a BBQ, a piece of cake, and take part in our raffle.

With the new cricket season well underway the League campaign is going well. We play in the Third Division of the South Northants Cricket League on Saturdays and have a full programme of Sunday friendly fixtures. We play our home fixtures at Sibford School and are always looking for new players. If you are interested in playing please feel free to turn up at any of our home fixtures, or contact Mark Luker (Saturdays) T: 07929 972726 or Tom Pratt (Sundays) T: 07771 707308. Home fixtures in July and August include Bert Gilbert Memorial Match (above), Saturday 18 July - Kings Sutton, Sunday 19 July - Steeple Aston, Saturday 8 August - Wroxton.

*Simon Chard*

Sibford Stores & Post Office, Sibford Ferris, OX15 5RG

Telephone 01295 788317 / 788348

YOUR LOCAL CONVENIENCE STORE AND NEWSAGENT

We deliver newspapers and magazines 7 days a week to all the surrounding area. Place your regular order today, whether for 1 day a week or 7. Always a wide selection of magazines, specialist titles available to order.

Chilled & Frozen foods, groceries, cigarettes, beers, wines and spirits, fresh fruit and vegetables, pet foods, household goods, toiletries, medical requisites and lots, lots more ...

Health Lottery, photocopying, fax service, dry cleaning

We will also undertake your mailings for you, just ask.

Always an excellent selection of Hook Norton bottled beers in stock.

Telephone your grocery order for free local delivery.

### OPENING HOURS

Monday to Saturday 7.30 am to 7.30 pm

Sunday 7.30 am to 4.00 pm

PLEASE SUPPORT YOUR LOCAL POST OFFICE, THERE ARE LOTS OF PRODUCT AND SERVICES AVAILABLE ON YOUR DOORSTEP

# SIBFORDS WALKING GROUP

## Forthcoming Walks

6 July, 20 July, 3 August, 17 August, 7 September,  
21 September, 5 October, 19 October, 2 November

Leaving the village hall on foot or by car at 10.00 am sharp to do a circuit of approximately 2 hours' duration. Dogs welcome provided they are put on leads when requested. Walking boots and poles are recommended but not compulsory. Everybody welcome. Enquiries to Sue Bannister T: 01295 780365 or E: [sebannister@gmail.com](mailto:sebannister@gmail.com)

Please notify Sue, village footpaths warden, if you discover things that need repairing or cutting back on the footpaths within the Sibfords' parishes.

**C. A. Berger**

Painting & Decorating  
Interiors & Exteriors  
Residential & Commercial  
Carpentry Repairs  
and  
Property Maintenance

Mobile: 07875 212 315

Office Tel/Fax:  
01295 738633

## GODSWELL NATURAL THERAPY CENTRE

Godswell Lodge, Church Street, Bloxham,  
OX15 4ES T: 01295 722788

Acupuncture • Body & Face Therapies • Bowen  
Technique • Chiropody/Podiatry • Cognitive  
Behavioural Therapy (CBT) • Continence Advice  
for women & men • Counselling • Cranio-Sacral  
Therapy • Homeopathy • Hypnotherapy • Lymphatic  
Drainage Massage • Massage (deep tissue, hot  
stone & Indian Head) • McTimoney-Corley Spinal  
Therapy • Nutritional Therapy •

*Fully qualified and professional therapists*  
[www.bloxhamsurgery.co.uk](http://www.bloxhamsurgery.co.uk)

## PILATES IN SIBFORD

Madeleine Wilson M. Sc.

Mat & Studio Master Teacher  
offers bespoke one to one  
and duet sessions training on  
specialised pilates equipment.

Reformers, chairs, barrels  
& Cadillac plus small group  
matwork classes.

For all Levels from Beginners to  
Advanced.

T: 01295 780279

Mobile: 07905 953300

E: [mw1@linuxwaves.com](mailto:mw1@linuxwaves.com)

[www.pilatesinsibford.co.uk](http://www.pilatesinsibford.co.uk)

## HOLMBY HOUSE SIBFORD FERRIS

*A stunning setting for  
special celebrations*

From Buffets to Gourmet Dinners  
Formal dining for large groups

Garden parties

Business meetings

Wedding receptions

Luxurious B & B

Self-catering accommodation

Tel/Fax: 01295 780104

E: [sally.wass@btinternet.com](mailto:sally.wass@btinternet.com)

## DID YOU KNOW? ...

... The area by the pond in Sibford Gower used to be known as Pond End. Could this mean that Bond's End Lane is in fact a misspelling?

... The Sibfords were once under a great sea. Fossils found in the garden of Mulberry House, Sibford Ferris during building work in 1986 have been dated to the Middle Jurassic period, making them between 170-180 million years old. They are of marine origin, two are bivalve marine molluscs and one is a sea urchin. These creatures burrow into the sea bed, suggesting that 180 million years ago Sibford was under water.

### THE VILLAGE SHOP HOOK NORTON

\*National Lottery\*

Grocery - Greengrocery - Bakery - Wines  
Spirits - Confectionery - Newspapers  
Magazines - Cards - Bottled Gas  
Open Monday to Friday  
8 am to 8 pm  
Saturday 8 am to 8 pm  
Sunday 8 am to 6 pm  
Telephone: 01608 737245

### RICHARD WALLINGTON BUILDER

Block paver drives a speciality  
Also extensions, patios  
fencing etc.  
High Quality Work - Free Estimates  
T 01295 780705  
Mobile 07743 932545  
(Sibford Gower)



## The Firs Garage

[www.firs-garage.com](http://www.firs-garage.com)

Family business established 1960



New Mitsubishi Outlander PHEV  
full sized family 4x4 plug-in hybrid,

Extensive stock of new and  
used cars & 4x4's,  
economical & low road tax

Part exchange welcome

MOT All makes servicing

Parts Bodyshop Fuel

*We look forward to seeing you,*





## SIBFORDS SOCIETY

On 18 June members visited the Gloucestershire Warwickshire Railway, based at Toddington near Tewkesbury. The line, which currently runs from Laverton to Cheltenham Race Course, is being extended to Broadway and this is scheduled to open next year.

We were able to enjoy trips on a steam train and a diesel railcar throughout the current length of the line, also visiting stations at Gotherington and Winchcombe, and were impressed by the efficient organisation, knowledge and friendliness of the staff.

Our next meeting on Thursday 16 July will be an evening visit to Radway to see an exhibition of *'The Battle of Edge Hill'* and have a guided walk of the village. The evening will conclude with refreshments (optional) at The Castle Inn at Edge Hill. As we should be in Radway by 6 pm it is suggested that we meet at the Village Hall in order to car share and leave by no later than 5.30 pm.

A final reminder, Chris Mason will be visiting on 1 July when he will be guiding a walk around the villages during which we hope to be able to see swifts and their nesting places. All those interested are asked to meet at the Village Hall prior to the start at 8 pm.

### **Music making is the business!**

Make it your business to learn the piano with an experienced professional. Blues, jazz and contemporary styles plus improvisation. Fun and enjoyment for all ages. Grades optional.

Contact Matt Platt T: 07973 266497 E: [mattplattmp3@aol.com](mailto:mattplattmp3@aol.com)

### **For Practical Garden Assistance**

Please contact Nick Taylor  
T 07425 136992

E [johnnicktaylor31@gmail.com](mailto:johnnicktaylor31@gmail.com)  
01295 680206 or 01295 788397

All types of garden work undertaken

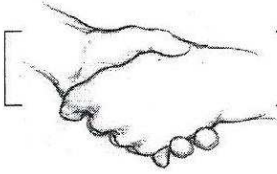
### **Maths Tuition places available from September**

Experienced Maths Teacher based in Sibford Ferris available to tutor pupils in Year 6 and Secondary School at all levels including preparation for GCSE, AS and A2 examinations.

For further information, call Helen

T: 01295 788736

E: [helen\\_earle@hotmail.com](mailto:helen_earle@hotmail.com)



## FRIENDSHIP CLUB

The Meeting on 7 July in the Village Hall is one of Oxfordshire County Council's Memory Boxes which always provokes a lot of chatter among our members. Why not call in and have a look? The cost is only 50p.

The trip on 21 July is to The National Memorial Arboretum leaving Sibford at 9.40 am. Please call the Secretary on T: 01295 263460 for further details.

On 4 August the Club will be playing bowls (indoors of course) - or at least attempting to. We usually end up with a lot of laughing and not much playing. We have a trip in August - details to follow for members.  
*Evey Boughton*

### HOLIDAY LET

For 1 or 2 people

In quiet, self-contained  
annexe

Contact Judy Abbott

T: 01295 780731

Native Germany speaker and qualified teacher with many years' experience offers  
**GERMAN TUITION**  
for all ages and levels.

For more information please contact Ilone T: 01295 788857  
E: [ilone@hotmail.com](mailto:ilone@hotmail.com)

### Serenity Beauty Salon

Gautherns Barn, Sibford Gower  
Open Tuesday to Saturday 9am-4pm

Plus late night Wednesday's  
Specialists in Environ and Guinot  
Facials and Skincare

OPI Manicure and Pedicures  
Waxing, Massage, Lash Tinting  
and Removal of Skin Blemishes

Stockist of Jane Iredale  
Mineral Make-Up

Contact Jo direct by email on

[joplum22@yahoo.com](mailto:joplum22@yahoo.com)

text 07891 220275 or leave a message on

01295 788463

£5 off a treatment with Jo with this ad!

### Holiday apartment overlooking Lake Trasimeno, Umbria, Italy

Self contained ground floor  
apartment; open plan lounge/  
kitchen /diner, 2 bedrooms,  
2 bathrooms, shared use of  
private garden/pool, panoramic  
lake views, close to bars,  
restaurants, shops and lake  
ferry.

See us on

[www.ownersdirect.co.uk](http://www.ownersdirect.co.uk)  
property ref IT12664

Or for further details, please  
contact local residents:  
[linckchick@gmail.com](mailto:linckchick@gmail.com)

# NEIGHBOURHOOD WATCH

Police phone: 101  
Crimestoppers phone: 0800 555111  
Trading Standards phone: 0845 0510845

The warmer weather and open doors and windows make it easy for the opportunist, so secure windows and doors, put away tools and toys, and lock sheds and garages. Don't let anyone you do not know or expect into your house without checking their identity - don't ask them for the number, close/lock the door while you are checking, and do not buy or sell at the door.

Remember to cancel papers when away and make sure your neighbour's post is put through the letterbox and packages are not left on doorsteps. The telephone and the internet are also used to find victims: criminals are continually finding new ways of approaching a victim and it's easy for any of us to be taken in.

At the latest NW meeting we heard about a man knocking at a door asking for directions. The lady noticed he took the wrong direction and when she tried to correct him he continued the same way. She phoned the police and, when they attended, found he had already committed seven burglaries.

Please remain vigilant and report anything suspicious. 999 is the emergency number or 101. Give as much information as you can: colour/vehicle type, registration number, direction of travel, number of people, age, height, clothing type/colour, hair colour/style. It is better to be safe than sorry.

**PC problems**  
*Get IT sorted*

- ◆ **Qualified PC technician,**
- ◆ **Expert advice,**
- ◆ **Competitive rates,**

[www.oxoncomputers.co.uk](http://www.oxoncomputers.co.uk)

*Get IT sorted*

**Tel Dan: 01295 788766**

Victoria Smith  
MASSAGE THERAPIST  
@ Serenity, Sibford Gower

*"Life takes it out of you, but  
massage puts it back"*

T: 07974 231571

**RED HORSEVALE** 

All Types of Fuel, Coal, Smokeless, Gas,  
Logs Kindling, Barbecue Needs, Central  
Heating Oil, Oil Tanks & Coal Bunkers  
Landscape & Building Materials  
Garden Centre & Garden Supplies,  
Farm & Country Sundries  
Equestrian Products, Horse & Pet Feeds  
Open: Monday - Saturday 8am - 5pm  
Windmill Farm, Banbury Road (A422),  
Oxhill, Warwickshire CV35 ORP  
Tel: 01926 642832 Fax: 01926 642853  
[www.redhorsevale.co.uk](http://www.redhorsevale.co.uk)

**Mick's Sticks**  
**Fire Lighting Wood For Sale**  
£3.00 per big bag  
Call in anytime and ask for  
Mick Canning at  
The Old Malt House, Sibford Ferris.  
T: 01295 780321



## LOCAL NEWS

**Epwell** - The Epwell Gardeners' Group invite Sibford residents to take part in the Epwell Flower and Produce Show, which takes place on Sunday 30 August from 2.30 - 5 pm at Epwell Village Hall, the day after Sibford's own Summer Horti' Show.

**Swalcliffe** - Save the Date - Orlando Jopling is holding a cello recital at Swalcliffe church on Sunday 8 November at 4 pm. Orlando holds recitals around the UK in aid of our parish churches and has raised over £70,000 through his Cello Pilgrimage to date. Further details from Gay Harris  
E: [gay.harris@virgin.net](mailto:gay.harris@virgin.net)

*If you hear of any local news - outside of the Sibfords - that you think would benefit or interest us all, please get in touch so we can include it in the Sibford Scene: E: [sibford.scene@btinternet.com](mailto:sibford.scene@btinternet.com)*

### Colour Analysis by Annie Broe

I will show you which colours are best for you.

Wearing the right colours is an easy and effective way to enhance your appearance.

You will instantly look more radiant, younger and healthier.

You will feel more confident. Colours are very powerful – use this power to your advantage and look fantastic!

Gift Vouchers available – the perfect present

For a personal colour analysis or for more details please call me on 01295 780637 or 07930 398151 or E: [annie4colourandstyle@gmail.com](mailto:annie4colourandstyle@gmail.com)

### BOXERSIZE & METAFIT FITNESS SESSION

Sibford Village Hall

*Every Monday at 7 pm*

Non contact, great cardio burn, strength training, confidence boost, stress relief. Men and women welcome, all ages and abilities.

For booking or further information, contact Lorraine on 07802 537100  
E: [willaminas@outlook.com](mailto:willaminas@outlook.com)

### LOGS

TOP QUALITY, SPLIT,  
SEASONED, HARDWOOD LOGS  
STACKING SERVICE AVAILABLE

DAVID RANDALL

01608 738109 or 07581 205451

E: [katylou63@sky.com](mailto:katylou63@sky.com)

## BOOK OF THE MONTH

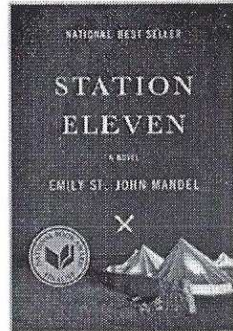
Continuing our recommendations for a good read ...

Send me your suggestions for Book of the Month along with a brief description and we'll run them in the Sibford Scene, space permitting. E: [sibford.scene@btinternet.com](mailto:sibford.scene@btinternet.com)

THIS MONTH ...

**STATION ELEVEN** by Emily St John Mandel

A dark read that follows a travelling caravan of actors, *The Travelling Symphony*, as they move around the North American Great Lakes in a world devastated by a 'flu pandemic. Spanning decades and moving between past and present, this is a story of art, ambition and relationships set against the eery backdrop of a collapsed civilisation.



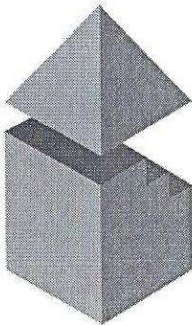
*Why not ask the mobile library to order you a copy? See the back cover for revised mobile library visiting dates.*

## LETTERCARVE

HAND-CARVED HARDWOOD SIGNS FOR THE HOME AND WORKPLACE.  
SUITABLE FOR HOUSES, SCHOOLS, ESTATES, FARMS, STABLES, KENNELS, OFFICES.

*MADE LOCALLY IN SIBFORD GOWER.*

.COM



**DAVID BOVILL**

**ARCHITECTURAL AND PLANNING SERVICES**

Providing a personal service from Design through Planning and Building Regulations, and beyond if required

Specialising in Extensions, Loft Extensions and Listed Buildings work

Please phone or e-mail to arrange a free initial consultation

01869 347906

[davidbovill@btinternet.com](mailto:davidbovill@btinternet.com)

# CHURCH SERVICES

Society of Friends  
Roman Catholic Mass

Sibford Gower, Sunday, 10.30 am  
Wroxton, Sunday, 9.00 am  
Brailes, Sunday, 11.30 am

## Holy Trinity Church, July & August 2015

- July 5            10 am Benefice Holy Communion at Broughton.  
6 pm Evening Prayer.
- July 11            Birthday Celebrations! 6pm Sibford Gower Endowed  
Primary School, birthday cake and fizz, the school  
choir and The Songbirds. 45 minutes of cheerful  
celebration. EVERYONE WARMLY WELCOMED.
- July 12            11 am Celebration Service and Holy Communion.  
Flower arrangements in church. 6 pm Choral  
Evensong - choir anthem, favourite hymns.
- July 18            Coffee Morning, 2 Barley Close, Sibford Gower,  
10 - 12 noon.
- July 19            11 am Methodist service. 6 pm Choral Evensong  
at Epwell - choir anthem, hymns for all.
- July 26            9.30 am Benefice Holy Communion. 6 pm Sung  
Evensong at Broughton.
- August 2            10 am Benefice Holy Communion at Epwell.  
6 pm Evening Prayer.
- August 9            8 am Benefice Holy Communion. 9.30 am Morning  
Praise.
- August 16            The Blessed Virgin Mary. 9.30 am Holy  
Communion. 6pm Evening Prayer.
- August 23            9.30 am Benefice Holy Communion.
- August 30            9.30 am Holy Communion.

Morning Prayer is said in church most Wednesdays  
at 8.45 am - it lasts 20 minutes or so. You are  
always welcome to join in.

**11 & 12 July**  
**Church 175th Birthday Celebration Weekend**  
See above - everyone warmly welcome to celebrate  
the church's 175th birthday.





# SIBFORD BUS SERVICES

## Cherwell Rural Dial-A-Ride Scheme

A minibus with tail-lift to take the **elderly** or **disabled** and escort to Banbury (max fare £1.60) Door-to-Door service. Book at least one day in advance. Operates on Wednesdays & Thursdays.

T: 01295 263777 for details.

BCTA also takes bookings for groups of 8 or more on a weekly/monthly basis (Wednesdays & Thursdays) to and from Banbury. T: 01295 263777

## Stagecoach – Timetable

Mondays to Saturdays

(No services on Sundays or public holidays)

### Bus 50A Banbury to Stratford-upon-Avon

Banbury, bus station .....	08.30	10.55	12.45	14.26	16.05	17.10	18.10
Sibford Ferris, crossroads.....	08.52	11.17	13.07	14.48	16.27	17.32	18.32
Sibford Gower, school .....	08.55	11.20	13.10	14.51	16.30	17.35	18.35
Shipston on Stour .....	09.15	11.40	13.35	15.11	16.50	17.55	18.55
Stratford on Avon, Wood St	09.40	12.09	14.04	15.40	17.19	18.24	19.24

### Bus 50A Stratford-upon-Avon to Banbury

	NS					<i>Sch hols</i>	<i>Term time</i>	
Stratford, Wood St .....	06.20	07.10	09.05	11.10	13.10	<i>15.10</i>	<i>15.24</i>	16.24
S Gower, school .....	07.04	07.55	09.56	11.56	13.56	<i>15.56</i>	<i>16.10</i>	17.14
S Ferris, crossroads .....	07.07	07.58	09.59	11.59	13.59	<i>15.59</i>	<i>16.13</i>	17.17
Banbury, bus station .....	07.28	08.25	10.21	12.21	14.21	<i>16.21</i>	<i>16.35</i>	17.39

NS Not Saturdays

All buses operate low floor wheelchair accessible vehicles. For complete details of all stops served by service 50A, timetables are available from the Tourist Information Centre, Castle Quay, Banbury.

## Fares

Sibford Ferris & Sibford Gower to Banbury:

Single £2.80 (Child £1.25) Return £5.25 (Child £2.35)

Sibford Ferris & Sibford Gower to Stratford:

Single £4.30 (Child £2.85) Return £6.30 (Child £4.20)

Unlimited Travel Cards are available for 1, 7 or 28 days but are regional and must be bought in advance. Contact the Stagecoach office, Stratford  
T: 01789 412680.

## CALENDAR OF EVENTS

### JULY

- Wed 1 Mobile Library in the Sibfords, 2.40 - 4.10 pm. **Last visit to Ferris. See page 12.**
- Sat 4 Nearly New Baby to Pre-School Sale, Village Hall, 2.30 - 4pm
- Sun 5 Bert Gilbert Memorial Cricket Match, Sibford School, 2pm
- Mon 6 Sibford Ferris Parish Council Meeting, Sibford School Sports Hall Classroom, 7.45 pm
- Sat 11 Church 175th birthday party, Primary School, 6 pm
- Sat 18 Coffee Morning in aid of Church, 2 Barley Close, 10 - 12 noon
- Tue 14 Sibford Gower Parish Council Meeting, Primary School, 8 pm
- Tue 14 Mobile Library in Sibford Gower, 2.30 - 3.30 pm
- Thu 23 Village Hall Film Night, *Still Alice*, 7.30 pm
- Tue 28 Mobile Library in Sibford Gower, 2.30 - 3.30 pm

### AUGUST

- Tue 11 Mobile Library in Sibford Gower, 2.30 - 3.30 pm
- Thu 20 Village Hall Film Night, *What We Did on Our Holiday*, 7.30 pm
- Tue 25 Mobile Library in Sibford Gower, 2.30 - 3.30 pm
- Sat 29 Summer Horti Show, Village Hall, 2.30 - 4.00 pm
- Sat 29 David Almeyn's *Rockoustic & Friends*, Village Hall, 7.30 pm

## JULY BIN COLLECTIONS

Green

Wednesday 1, 15 & 29 July

Brown and blue

Wednesday 8 & 22 July

## SIBFORD SCENE

DEADLINE FOR SEPTEMBER ISSUE - 18 AUGUST 2015

Editor: Caroline Seely, Home Farm, Sibford Gower, OX15 5RS  
E: sibford.scene@btinternet.com

Ads: Ivor Hopkyns, Elmridge Farmhouse, Sibford Gower, OX15 5RT  
T: 01295 788367  
E: sallyandivorhopkyns@hotmail.com

*Front cover pic: Poppies marking the visit to the Sibford war graves, by **Evie Fletcher of Sibford Gower.***