

# SIBFORD SCENE



JUNE 2015

No. 373

## VILLAGE HALL FUN DOG SHOW

Saturday 6 June, Village Hall, 1.30 pm

## PRIMARY SCHOOL ORCHARD GRAND OPENING

Sunday 7 June, Sibford Gower Primary School, 2 - 5 pm

## THE TEMPEST

Thursday 18 June, Holly House, Sibford Ferris, 7.30 pm

## NGS OPEN GARDENS

Sunday 21 June, Sibford Gower, 2 - 6 pm

## VILLAGE HALL FILM NIGHT

*Before I Go To Sleep*

Thursday 25 June, Village Hall, 7 pm

## DAMN RIGHT I GOT THE BLUES

Saturday 27 June, Village Hall, 7 pm

## WELCOME TO SIBFORD

If you are a new resident of Sibford or have new neighbours who have not yet received their copy of the *Welcome to Sibford* booklet, please call Ivor Hopkyns on 788367 (Gower and Burdrop) or Nic Durrant on 788865 (Ferris), and a copy will be delivered to you. We hope the information will help to make you feel at home by telling you about the services, schools, clubs and societies that are currently active in the villages.

## LETTERS & NOTICES

### **Nepal Earthquake Charity Quiz**

A huge thank you to everybody who came along and/or donated to the village quiz on Wednesday 6 May. We had 10 teams - between 40 and 50 people in total - which is more than I could have wished for. Together, through contributions, quiz and raffle, we raised a staggering £530 for Oxfam's Nepal Earthquake Fund. People are still asking to donate so please visit Oxfam's appeal page at <http://bit.ly/1Dwufrw>. I hope you all enjoyed the evening as much as we did. Thank you again for all your generous donations.

*Megan Gilkes*

### **Keeping our villages clean and tidy**

Following the recent 'litter pick' our village looked great, but there is some concern about the amount of dog waste left uncollected by dog owners. Areas of concern are along Woodway Road and near the village shop. As a regular walker, often with my grandchildren, to have to step onto the verge to avoid traffic only to find you have put your foot in something unpleasant is horrible! Please pick up after your dog(s) and place the bag in a bin. If you want to live in a lovely place you have to help look after it.

*Ginny Bennett*

### **Found**

Large bunch of car and house keys plus a pair of glasses found in Park Farmhouse garden, Burdrop. Please call Caroline Harley T: 788142.

*Front cover painting: Views from Ditch Edge Lane by Sibford artist, Nic Durrant. E: [nic@durrant-artwork.com](mailto:nic@durrant-artwork.com)*

## UNSUNG HEROES

It is with some trepidation that I step into Adrian Lamb's shoes as Editor of the Sibford Scene. During the handover process I have been repeatedly surprised by the huge behind-the-Sibford-Scene's effort that goes into its monthly production; from the mysteries of its layout software to the efforts of the many dedicated volunteers who print, collate and deliver it to us all each month. These people play an invaluable role in the Scene's continued future and I'd like to thank Reverend Ronald Hawkes, Peter Hardman, Ian Warden, Sarah Gale, Ina and Arnold Lamb, Sue Etherington-Smith, Nicky Kitchen, Peter Robinson, the Coventrys, the Franklins, Ivor Hopkyns, Mollie Mulley, Sue Lovatt, Peter Conway, Petra Berry, Sandra Tustain, Frank Scouse, Clive and Jan Warner, Brian Joynes, Erica Wimbush, Nicholas Giles, Fiona Pidgeon, Matthew Conisbee, Sue Mattinson, as well as all of the Scene's regular contributors.

Of course our biggest thanks must be reserved for Adrian, who took on the Scene's Editorship to prevent its demise and who has patiently and fairly presided over it for 15 years and 160 issues, not just as Editor but also stapler, postman and occasional diplomat.

The Sibford Scene is an invaluable village amenity and one we're all keen to preserve. You'll notice a few small changes in this issue, but this is your resource and I'd like to add to the Sibford Scene's content by encouraging your participation.

Please send me interesting articles, news, Sibford memories, ideas and (clean) comment for inclusion. Meanwhile, my thanks to an enthusiastic Burdrop resident for his regular column suggestions including, among others not printable here, roadkill recipes and interesting items seen on the back seats of the Sibfords' cars.

Please be patient with me for a little while as I get to grips with my new role. Oh, and finally, please help the Sibford Scene to continue by responding to the appeal on page 20.

*Caroline Seely*



## NATURE NOTES

April 29 - Two wheatears were seen in Field Barn Ground in the Ferris today. We have sometimes seen quite a few in that field in April and early May as they move up the country to their nesting areas further north. The field has been harrowed and rolled but has no crop cover yet giving every chance of seeing their white rumps as they take off. About 35 years ago a pair stayed around Field Barn throughout the summer and must have nested there as a young one was run over by a lorry on the road above the barn.

May 12 - Many years ago I bored a hole in a hollow gate post and capped the top thinking that it could make a nesting place for a great tit. It has never had a nest in it until this year and it is not a great tit's but a bumble bee's nest. In my experience bumble bees nest at or below ground level so I was surprised to find this one. I heard on the radio that a bumble bee that prefers to nest off the ground has appeared in this country. Perhaps someone can tell me if that is so.

May 16 - We saw three holly blue butterflies today and a comma a few days ago, but these cold winds are not what butterflies like.

May 17 - I hear of frequent sightings of a single red kite and one of two birds together but have not heard of any sign that they are nesting.

May 18 - I have been looking at the oil seed rape crops which are now in full bloom and even on sunny days I have a job to find any bees and very few other insects that might be pollinators. In spite of this bee keepers seem to get plenty of rape honey and the rape seems to produce good crops of seed. Perhaps the shaking by the wind is enough to pollinate it although it is not what I would think of as a wind-pollinated plant.

### **HOLMBY HOUSE SIBFORD FERRIS**

*A stunning setting for  
special celebrations*

From Buffets to Gourmet Dinners

Formal dining for large groups

Garden parties

Business meetings

Wedding receptions

Luxurious B & B

Self-catering accommodation

Tel/Fax: 01295 780104

E: sally.wass@btinternet.com

### **PILATES IN SIBFORD**

Madeleine Wilson M. Sc.

Mat & Studio Master Teacher  
offers bespoke one to one  
and duet sessions training on  
specialised pilates equipment.

Reformers, chairs, barrels  
& Cadillac plus small group  
matwork classes.

For all Levels from Beginners to  
Advanced.

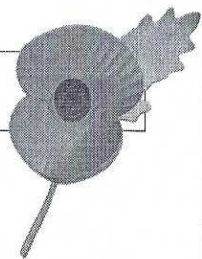
**T: 01295 780279**

**Mobile: 07905 953300**

**E: mw1@linuxwaves.com**

**www.pilatesinsibford.co.uk**

## WAR GRAVES VISIT



Fifteen tired but enthusiastic travellers returned to the Village Hall car park at 8 pm on Tuesday 19 May. We had no idea what to expect from the trip but, without exception, we all learnt a huge amount whilst covering hundreds of miles, saw so many sentient images, shed tears as well as howled with laughter (thanks mainly to Judith Weeks' hilarious tales) whilst forging friendships with people now linked by a quite extraordinary journey.

We placed exquisite ceramic poppies, made by Year 6 pupils at Sibford Primary School, on each of the Sibford graves. Judith had made individual wooden crosses with the names of the fallen and a message that reinforced the connection with home. After all, those who did not return had once been pupils at the same school.

There were so many highlights I could easily take up the whole of the Sibford Scene describing them and I urge you to watch the PowerPoint presentation that will be screened soon at the Village Hall. (*Details to follow in the next issue*). Sincere thanks to everyone who contributed to make this such an unforgettable experience. However, 'mentioned in despatches' must be Sara and Richard Thomas for their superb organisation (which included securing the services of a fantastic guide and driver) and Judith, who had the brilliant idea in the first place.

As we prepared to leave the final cemetery where Private Webb is buried, I recited these few words which seemed to have been written for us .....

*Remembering*

*A man's destination is not his destiny  
Every country is home to one man and exile to another  
Where a man died bravely  
at one with his destiny, that soil is his.*

*Let his village remember.*

*Sincere thanks to Charlotte Bird for getting this to us just as the Sibford Scene went to press. To do the visit the justice it deserves a fuller account, with photos, is planned for the next issue. Ed.*



Meeting 12 May 2015 - President Glennis Hardman welcomed members to the Resolution Meeting, '*Failure to Care - Assessment of Need in Long Term Care*' to be debated at the National AGM in London on 4 June. Secretary Lynda Conway explained the main points and a vote was taken and carried in favour.

Glennis gave an account of the Centenary Baton's route through this area on 18 April when members watched the handover at Hook Norton Brewery and followed the dray to *The Gate Hangs High*, where the baton was taken to Broughton Castle and then on to Bloxham School where it arrived by a lady on a white horse. A grand tea party concluded an exciting day. The baton will continue its route arriving at The Albert Hall on 4 June for The National AGM, in the presence of The Queen, The Princess Royal and The Countess of Wessex. Sibford members, with other WIs in the area, will be watching the event screened live at Cropredy Village Hall hosted by Cropredy WI.

The well-subscribed competition for '*A Flowering Stem from own Garden*' was won by Kathleen Winter, second Val Powell and third Glennis Hardman. Val Powell and Mary Hill served tea with mouth-watering cakes baked by Lynda Conway.

The next Meeting is on Tuesday 9 June. Gillian Horton from Flower Thyme, Kineton will demonstrate the planting of Summer pots. Competition: '*A Ceramic Plant Container*'. Anyone interested will be most welcome in the village hall at 2 pm.

*Glennis Hardman*

### **JENNIFER WEALSBY - ART & DESIGN**

*Tutor of drawing and painting classes since 1988*

Mondays 10 -12 am, Sibford Village Hall, small hall - pastels  
Fridays 1 - 3 pm, Sibford Village Hall - drawing and watercolour  
also

Wednesdays 9.30 - 11.30 am, Churchill Village Hall

Wednesdays 1 - 3 pm, Spelsbury Memorial Hall

Fridays 9.30 - 11.30 am, Holly Tree, Deddington

(All drawing and watercolour classes)

**To register your interest or find out more, please ring  
01608 730401 or email [jgw4art@gmail.com](mailto:jgw4art@gmail.com)**

## FIVE MINUTES WITH ...

*A new monthly column to help us get to know our neighbours.*

### THIS MONTH: SUE COOK

*Perhaps best known for presenting programmes like Crimewatch and Nationwide, Sue and her husband, Ian Sharp, moved to Sibford Ferris in 2011. Sue has two grown up children, a cat called Patches, and loves gardening, walking, tennis and yoga. She has recently returned from a trip to*



*Antarctica, taking part in a special voyage to mark the centenary of Sir Ernest Shackleton's Trans-Antarctic Expedition aboard the 'Endurance'.*

#### ***What brought you to the Sibfords?***

Happy accident. The children had left home and we decided it was time to leave London. We concentrated our search in North Oxfordshire/South Warwickshire because we had good friends in the area. We hadn't seen many properties before our house in Sibford Ferris came on the market. We saw it, fell for it... and the rest is history!

#### ***What is your earliest memory?***

The afternoon my brother was born. I was four and a half. While my father anxiously paced the living room, I sat at the bottom of the stairs naughtily tearing little strips off the wallpaper! Finally I was summoned upstairs where my mother was sitting up in bed, wreathed in smiles and an adorable new baby lay sleeping in a Moses basket beside her.

#### ***What was the first record you ever bought?***

'I Believe' by the Bachelors. It cost 6 shillings and 9 pence; a third of my day's pay from my job as a Saturday girl in Woolworths in Ruislip.

#### ***What do you currently do for a living?***

These days I write. I've had two novels published (*On Dangerous Ground* and *Force of Nature*) and am currently working on my third.

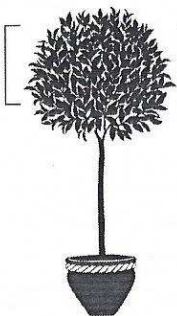
#### ***Tell us something surprising about yourself***

Perhaps because of my law-abiding Crimewatch image, people might not guess that I love driving – and driving at speed. I did a bit of rally driving in the 80s and the bug has never left me.

#### ***Finally, what's the best thing for you about living in the Sibfords - and is there one thing you would change?***

There are a lot of 'best things'. The landscape, the night sky... but especially the people. We were made welcome so quickly when we arrived here and consider ourselves hugely blessed. The one thing I would change is the potholed surface of Back Lane where we live!





## SIBFORD HORTI SOCIETY

### **The Spring Show and Plant Sale**

Many thanks to all who entered in the Spring Show. The committee work hard to stage the event and it is lovely to see people make an effort to enter into the spirit of it. The Show raises funds for the Horticultural Society to pay for the speakers that we have over the year.

The flowers were a real picture, the cookery looked very appetising, the handicrafts and photography were inspiring and everyone loved the children's entries (the treasure maps were much admired). Many thanks to Sue and Véronique for manning the plant stall and selling to all!

The next show will take place on August bank holiday Saturday 29 August, so please make a note on your calendar!

### **Sibford Horticultural Society News**

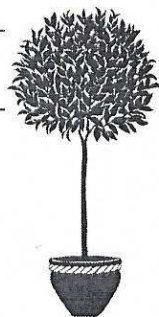
A most entertaining evening was enjoyed on Wednesday 13 May, when Tom Duncan gave us a witty and impressive talk on the history of Irish gardens. Beautifully illustrated slides, Tom's vast knowledge of Irish castles, gardens and their often eccentric owners made it a most enjoyable evening.

### **Plants for sale in aid of the Sibford Horti Society**

Sue Bannister raises money for guest speakers and outings for the Horti Society by propagating a wide range of perennials, shrubs, and unusual annuals for sale from her home by appointment throughout the year or at plant stalls. Prices start at 50p and rarely exceed £3. Before you rush off to the garden centre, why not ring or email Sue to arrange a visit, see the plants growing, and get advice on where they will grow best in your garden. Sue also runs stalls in aid of Holy Trinity Church and the Village Hall. Contact Sue T: 01295 780365  
E: [sebannister@gmail.com](mailto:sebannister@gmail.com)



# SIBFORD HORTI SOCIETY



**Wednesday 10 June** - Don't miss this one! An evening visit to a particularly lovely garden at the Court House, Stretton-on-the-Fosse. We shall travel in as few cars as possible, leaving the Village Hall at 6 pm. Please let Judith know (T: 780348) ASAP if you would like to come as our hosts are kindly providing drinks and nibbles and they need to know numbers. A lovely evening out for £7.50 each.

## **NGS Open Gardens, Sibford Gower** **Sunday 21 June, 2 - 6 pm**

NGS Open Gardens in Sibford Gower, with delicious garden teas at The Manor House. Please support us in raising money for much-needed charities. Come and enjoy four fabulous gardens - Gowers Close, Carter's Yard, The Manor House and Buttslade House - plus a woodland walk at Green Acres. Bring your friends and well-behaved dogs on leads. Children under 15 go free. Plants for sale at Carters Yard.

## THIS MONTH IN YOUR GARDEN - JUNE

- Tie in shoots on climbing roses securely.
- Continue planting any half-hardy annuals grown from seed, hardening them off first.
- Time to prune Spring flowering shrubs such as Philadelphus, Weigela, Deutzia etc.
- Remove dead foliage from spring bulbs.
- If you have lilies, check for red lily beetles every day.
- Time to clip hedges, but wait until fledglings have flown the nest first.
- Give your plants the 'Chelsea Chop', shortening growths to bush out and flower later. Choose several stems, leaving others to go on flowering.
- Keep tying in runner beans.
- Courgettes should be planted out now - and radishes become woody and peppery if they dry out. Give both plenty of water.
- Feed, water, and don't stop weeding. But do find time to sit in the garden and enjoy it - June is a wonderful month.

## VILLAGE HALL NEWS

**VILLAGE HALL FIELD – IMPORTANT MESSAGE** - There are still children climbing over the fences around the Village Hall field. PLEASE make sure that it is not your children. The fences are damaged and need repair, and there are livestock in the fields that must be kept safe. Enjoy the facilities at the Village Hall but please help to preserve them.

**DOG SHOW** - Saturday 6 June. See page 19 for the Dog Show classes.

**FILM NIGHTS** - The next film night on Thursday 25 June will show *Before I Go To Sleep*. Doors open 7 pm, film starts at 7.30 pm. Drinks available. You are welcome to bring your own wine (glasses provided). Next month's film night is 23 July.

**DAMN RIGHT I GOT THE BLUES** are coming back to Sibford on Saturday 27 June. Don't miss this really popular event and buy your tickets before the day to avoid disappointment. Tickets £12.50 each are available from Muriel Chandler on T: 01295 780025 or from the Sibford Ferris shop. Licensed Bar and BBQ. See pages 12 & 13 for more about the band.

OPUS

### OPUS Property Services Ltd

01295 780652  
07816592124

All aspects of property maintenance and refurbishment undertaken from replacement light bulbs and tap washers to new ceilings and floors.

Plumbing, tiling, wood flooring, floor renovation, under floor heating, plastering, electrics, decorating, damp proofing, carpentry, locks, drains, kitchens, bathrooms etc

**Call us or visit our website for more information:**  
[www.opusps.co.uk](http://www.opusps.co.uk)



BESPOKE DESIGN SERVICE FOR  
CUSTOM MADE FURNITURE

Curtains, Blinds & Cushions

Loose covers

Headboards & bedspreads

Curtain poles & tracks

New Sofas & chairs reupholstery

Lampshade making

01295 788145

[info@annwoolgrove.co.uk](mailto:info@annwoolgrove.co.uk)

[www.annwoolgrove.com](http://www.annwoolgrove.com)

[www.yarnhill.co.uk](http://www.yarnhill.co.uk)



## VILLAGE HALL NEWS

SUMMER REWIND presents David Alleyn's *Rockoustic and friends* on Saturday 29 August in the evening following the Summer Horti Show. Bring your friends and family to enjoy the music, Bar and BBQ.

VILLAGE FAYRE - This year's Fayre will take place on Saturday 26 September.

VILLAGE HALL LOTTERY - and the Winners are ...  
Congratulations to this month's Village Hall Lottery winners!  
1st Mrs Fleet, 2nd Mrs S Wass, 3rd Mr R Kana, 4th Mr M Thomas.

For latest Hall news, check out our Facebook page via the new SIBFORD HALL PROMOTIONS web page on the Sibfords' website: [sibfords.org.uk/sibford-hall-promotions](http://sibfords.org.uk/sibford-hall-promotions).

VILLAGE HALL HIRE - Don't forget that the Hall and its excellent amenities are available for hire at very reasonable rates. From £8.25 per hour for one hall and £15 per hour for both. Contact Ginny Bennett T: 01295 780373.

## NEPAL EARTHQUAKE APPEAL

You are invited to a Charity Curry Lunch at Sibford Village Hall on Sunday 7 June from 12.30 – 3 pm, provided by Gurkha Spice Restaurant, with all proceeds to the Red Cross Nepal Earthquake Appeal. Hear the latest news on the situation in Nepal. Adults: £15. Children under 14: £8. Bring your own drinks. (Dalai Lama quote t-shirts for sale £5). Tickets from Diana Hughes T: 01295 780506 by 4 June please.



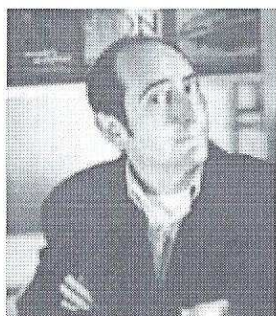
### **... a Sibfords Did You Know?**

***Burdop derives its name from the Old English for 'the hamlet near the burg' (a fortified place or Manor). Within living memory Sibford Gower and Burdop were known collectively as Broad Sibford while Sibford Ferris was known as Little Sibford.***



## SIBFORD'S GOT TALENT

**We're delighted - and a little bit lucky too - to welcome *Damn Right I Got the Blues* back to the village this month.** Thanks to Sibford Gower resident and band member, Ant Harwood, the band is returning to raise valuable funds for the Village Hall at what is always a great night for the Sibfords. We caught up with Ant to find out more about the band ...



*Damn Right I Got the Blues* was born one night in 1991 when I was driving home after seeing an awful band and said to my journalist and blues-harp-playing friend Graham that we could do better ourselves. I knew a film director who played drums and a systems analyst who sang. Graham had interviewed novelist Ken Follett for GQ magazine and knew that Ken played bass ... six months later, *DRIGTB* played its first gig at the legendary London venue, the Hope & Anchor. Ten years on, Graham quit and was replaced by Ken's guitarist son, the enigmatic virtuoso known only as Sonic Boom Boy.

A couple of years after Sonic's arrival, *DRIGTB* was the house band at a starry fundraising concert for the Royal Festival Hall and performed for the first time with the yet-to-be-ennobled television star, Floella Benjamin. Last year long-serving drummer Kevin Jones quit and was replaced by eminent branding designer and consultant, Daren Cook. And that's the band today.

*continues ...*

### YOGA

**Sibford Village Hall**

**Tuesday 9.00 - 10.00 am**

**Thursday 7.00 - 8.00 pm**

**Friday 9.00 - 10.00 am**

Beginners welcome

Enquiries to:

Juliette 07703 836 856

Juliette53@btinternet.com

Drop-in £7.00



### BED & BREAKFAST

Buttslade House, Sibford Gower offers supremely comfortable en suite accommodation in the

charming setting of a tranquil English country garden. Contact:

Diana Thompson T: 01295 788818

E: [diana@buttsladehouse.co.uk](mailto:diana@buttsladehouse.co.uk)

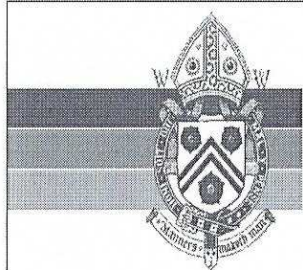
[www.buttsladehouse.co.uk](http://www.buttsladehouse.co.uk)

## SIBFORD'S GOT TALENT

The highlights of nearly 25 years of gigging include: being joined on stage at the Hollywood Palladium, Los Angeles, by Bruce Springsteen; celebrating the new millennium with a gig at Knebworth; arriving by private boat at a gig on the beach in Positano; gigging with the late, great Douglas Adams at the Berkeley Hotel, London; playing to a crowd of 6,000 people (and 50,000 online viewers) in the town square of Pietra Santo, Tuscany; getting a taste of Beatlemania-style hysteria at Exeter University's Leavers' Ball when a couple of thousand students welcome their Vice Chancellor, Floella, on stage; and several hot, happy nights in Sibford's village hall over the years – the band's favourite regular gig.

At Sibford on 27 June *DRIGTB* will be serving up lots of new material alongside some of our old favourites, and will be joined on stage by special guest, the most excellent rock violinist Amy Butterworth.

*Tickets for the 27 June gig at the Village Hall are £12.50 each and are available from the village shop or from Muriel on 01295 780025.*



THE  
WYKHAM  
ARMS

SIBFORD GOWER

Damian and Debbie invite you to enjoy the atmosphere of our 16th Century thatched Inn.

- Bar and a la carte menus available lunch & dinner
- Excellent Sunday lunch - to suit the weather!
- New food and wine takeaway menu
- Wednesday steak and wine night £15
- Selection of fine wines and real cask ales
- Happy hour and a half every Wednesday evening
- Gift vouchers available

Opening Times

12.00 am - 3.00 pm

6.00 pm - 11.30 pm

Open all day Saturday & Sunday for cream teas

Bar only Sunday Night

Closed all day Monday (*except bank holidays*)

Temple Mill Road, Sibford Gower, Banbury OX15 5RX T: 01295 788808/07  
E: [info@wykhamarms.co.uk](mailto:info@wykhamarms.co.uk) [www.wykhamarms.co.uk](http://www.wykhamarms.co.uk)



## **SIBFORD SCHOOL OPEN DAY**

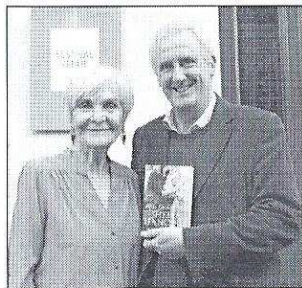
Sibford School's annual Open Day takes place on Saturday 13 June; an opportunity for parents of prospective pupils to join parents of current pupils, friends from the village and Old Scholars to find out more about the school. The 2015 theme is 'Celebrating Excellence'. The morning starts with music and drama at 9.30 am. Head, Michael Goodwin, will give a talk to parents and families of prospective pupils at 11 am after which there will be a chance to visit classrooms to view exhibitions and practical demonstrations. Refreshments for sale, and fun activities include zorbing and a bouncy castle! A Quaker Meeting for Worship will be held immediately preceding Open Morning at 9 am. All welcome.

## **SIBFORD PUPIL TO REPRESENT GB IN CHICAGO TRIATHLON**

Sibford pupil Rosie Weston is to represent Great Britain in the 2015 Chicago ITU Sprint Distance Triathlon World Championship. The 16-year old, who has only been competing in triathlon events for two years, qualified in May when she became the under 20s British Triathlon Sprint Champion.

## **SIBFORD HEAD MEETS SHEILA HANCOCK**

Sibford School Head, Michael Goodwin, is pictured with actress and author Sheila Hancock. The pair met at the 2015 Chipping Norton Literary Festival where Sheila was speaking about her recent novel '*Miss Carter's War*', her life with Morse actor John Thaw and her Quaker faith.



## **RAIN OR SHINE THEATRE COMPANY**

Some tickets are still available for *The Tempest* on Thursday 18 June in Holly House garden. Gates open 6.30 pm for picnics. Tickets - £13 for adults, £11 for concessions and £6 for children.

For further information, contact Ali Bromhall  
T: 01295 781216 or mobile 07595 284442  
Sibford School, Sibford Ferris, Oxfordshire OX15 5QL





## SIBFORD GOWER PRIMARY SCHOOL NEWS



### *Orchard Grand Opening*

*Please join us for the grand  
opening of the Sibford Gower  
Primary School Orchard,  
On Sunday 7<sup>th</sup> June 2pm-5pm  
@ Sibford Gower Primary School*

*If you were part of the original plan for the Orchard  
please come along and join in the celebrations!*

### **SCHOOL CARETAKER/SITE MANAGER**

Sibford Gower Endowed Primary School wish to appoint a reliable, resourceful person with excellent DIY skills to the position of Caretaker/Site Manager.

The successful applicant will live locally and have excellent communication skills. They will have a calm and friendly approach and be able to interact in a professional manner with children, parents, staff and contractors.

They will be responsible for the operation, management, and development of systems and procedures relating to buildings and grounds maintenance, the cleanliness and upkeep of the site and areas of health and safety. Training will be provided.

15 Hours per week, 7.30 am (open site) to 10.30 am. Flexible hours available during school holidays. If you would like to find out more please email [Office.3005@sibford-gower.oxon.sch.uk](mailto:Office.3005@sibford-gower.oxon.sch.uk) or call 01295 780270.

*Sibford Gower Endowed Primary School is committed to safeguarding and promoting the welfare of children and young people and expects all staff and volunteers to share this commitment*



## THE SIBFORDS SOCIETY

At our meeting on 21 May members enjoyed a presentation by railway historian Philip Jarvis. The first part of his talk related to the railway which used to run from Banbury to Cheltenham, passing through Hook Norton, Chipping Norton, Kingham and Andoversford. This line, which opened in 1885, was closed in October 1962 as part of the rationalisation of the rail network throughout the country. The track and infrastructure has been removed and very little remains of what was once a link between two north/south main lines.

The second part of Philip's talk covered the line which used to run south of Stratford-on-Avon, linking up with the network to South Wales and the West Country. In its heyday this line, which opened in 1906, used to carry trains from the North and Midlands to most parts of the South West. Today, very little of the track remains except for a 12 mile section between Laverton and Cheltenham Racecourse stations. This section has been relaid and is now operated by The Gloucestershire

### HOLIDAY LET

For 1 or 2 people

In quiet, self-contained  
annexe

Contact Judy Abbott

T: 01295 780731

### WANTED URGENTLY

Knowledgeable person to help in  
Sibford garden. Start as soon as  
possible. Must be reliable with some  
gardening experience.

E: [seagulllodge@gmail.com](mailto:seagulllodge@gmail.com)

T: 01295 788848

and leave a message with your name  
and phone number

### FARMHOUSE BED & BREAKFAST GRANGE FARM, SWALCLIFFE

*Enjoy warm hospitality and peaceful  
surroundings in our comfortable*

*18th C farmhouse*

CONTACT BARBARA TAYLOR

T: 01295 780206 or 07712 895728

[www.swalcliffegrance.com](http://www.swalcliffegrance.com)

### LOGS

TOP QUALITY, SPLIT,  
SEASONED, HARDWOOD LOGS  
STACKING SERVICE AVAILABLE

DAVID RANDALL

01608 738109 or 07581 205451

E: [katylou63@sky.com](mailto:katylou63@sky.com)

# THE SIBFORDS SOCIETY



Warwickshire Railway as a heritage line and is based at Toddington Station. Both talks were well illustrated with photos of the track, infrastructure and trains which used to run on these lines.

The Society has arranged a group visit to the GWR on Thursday 18 June when members will be able to travel on steam and diesel trains throughout the length of the track. It is intended that we will meet at the Village Hall car park in order to leave by 8.45 am to allow sufficient time to travel to Toddington for the first train at 10.00 am.

A note to members – Chris Mason who gave a talk on swifts in March is to visit again on 1 July at 8.00 pm and will guide a walk around the villages when we hope to be able to see some swifts and their nesting places. All those interested are asked to meet in the Village Hall car park.

*The Sibfords Society meets once a month in the Village Hall. Non members are always welcome at a cost of £2. Full details at: [thesibfords.org.uk/org/sibfords-society](http://thesibfords.org.uk/org/sibfords-society)*

## **Sibford Stores & Post Office, Sibford Ferris, OX15 5RG**

Telephone 01295 788317 / 788348

### **YOUR LOCAL CONVENIENCE STORE AND NEWSAGENT**

We deliver newspapers and magazines 7 days a week to all the surrounding area. Place your regular order today, whether for 1 day a week or 7. Always a wide selection of magazines, specialist titles available to order.

Chilled & Frozen foods, groceries, cigarettes, beers, wines and spirits, fresh fruit and vegetables, pet foods, household goods, toiletries, medical requisites and lots, lots more ...

Health Lottery, photocopying, fax service, dry cleaning

We will also undertake your mailings for you, just ask..

Always an excellent selection of Hook Norton bottled beers in stock.

Telephone your grocery order for free local delivery.

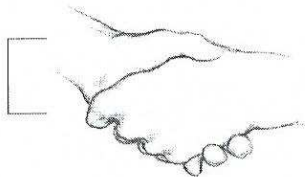
### **OPENING HOURS**

Monday to Saturday 7.30 am to 7.30 pm

Sunday 7.30 am to 4.00 pm

PLEASE SUPPORT YOUR LOCAL POST OFFICE, THERE ARE LOTS OF PRODUCT AND SERVICES AVAILABLE ON YOUR DOORSTEP





## FRIENDSHIP CLUB

We had our AGM in May and, apart from a rise in membership fees (to £8.00) which are due NOW, the Committee remains the same. We didn't go on our outing in May because of holidays and there was not enough interest to warrant a coach. Better luck in June.

Our meeting in the Hall on 2 June is going to include skittles, which will end with an awful lot of laughter as usual! Of course, we welcome any new members who wish to join us. Why sit at home on your own? Join us for 2 hours on the 1st Tuesday and 3rd Tuesday of every month at the Village Hall.

*Evey Boughton*



### ***... a Sibfords Did You Know?***

***Ivor Novello is said to have composed 'Keep the Home Fires Burning' during a visit to his friend, Frank Lascelles, in Sibford Gower.***

**LOGS • HAY •  
• STRAW •  
GARDEN MANURE**

**Antony Sabin  
T: 01295 788421**

**Bed & Breakfast  
AGDON FARM  
Nr Brailes**

**Comfortable rooms  
in old stone farmhouse  
Tel: Maggie Cripps  
01608 685226**

### **Colour Analysis by Annie Broe**

I will show you which colours are best for you.

Wearing the right colours is an easy and effective way to enhance your appearance.

You will instantly look more radiant, younger and healthier.

You will feel more confident.

Colours are very powerful – use this power to your advantage and look fantastic!

Gift Vouchers available – the perfect present

For a personal colour analysis or for more details please call me on  
01295 780637 or 07930 398151 or E: [annie4colourandstyle@gmail.com](mailto:annie4colourandstyle@gmail.com)

# SIBFORD FUN DOG SHOW

This year's Dog Show takes place at the Village Hall on Saturday 6 June. Entries open from 12.30 pm and classes start at 1.30. Entry £1.50 per class. There will be a BBQ, Bar and a bouncy castle.

Compete for the Young Handler's Trophy, the Top Dog Trophy and the Reserve Trophy. Classes are:

1. Best Young Handler (13 years & under)
2. Best Rescue - dog or bitch
3. Best Puppy (over 3 months up to 1 year)
4. Prettiest Bitch
5. Most Handsome Dog
6. Veteran - dog or bitch (7 years and over)
7. Best Crossbreed - dog or bitch
8. Best Pedigree - dog or bitch
9. Most Appealing Eyes - dog or bitch
10. Best Behaved - dog or bitch
11. Best Trick - dog or bitch
12. Dog/Bitch most like its Owner

The winner of classes 2 to 12 go through to the Final to compete for the Top Dog Trophy and Reserve Trophy.

Entries before the day to Ginny Bennett T: 01295 780373. Entry forms will be available from the Village Hall porch from 25 May onwards, or print off your own from the Sibfords website: [thesibfords.org.uk](http://thesibfords.org.uk)



## Vanda's Ironing Service

Covering the Sibfords and surrounding villages

**01295 780071 07776 101 571**

**[sibfordironingservices@gmail.com](mailto:sibfordironingservices@gmail.com)**

Per basket\* collected and returned by us - £20\*\*

Per basket\* delivered and collected by you - £15

### Prices per item

Shirts/Blouses - £1.50   Skirts/Trousers - £1.35

Sweatshirts/Long-sleeved tops - £1.25   T-shirts/short sleeved tops - £1.10

### Bedding - per set

Super King - £4.00   King - £3.00   Double - £2.50   Single - £2.00

\*basket - (level basket) = one full machine load/approx.

3 carrier bags full or per item, if less than a full basket

\*\*delivery within 10 mile radius of Sibford





## PLEASE HELP ...

We'd really like to continue to enhance the Sibford Scene over the coming months but need your help to achieve this. One thing we hope to do is to print, collate and staple the publication at a local print shop to release our volunteers from this time-consuming task and improve our production processes and print quality. But of course this comes at a cost.

Please consider donating a small sum to ensure the continued future of the Sibford Scene. Donations by cheque (*payable to Sibford Scene*) or cash to Ivor Hopkyns at Elmridge Farmhouse, Sibford Gower OX15 5RT, or by bank transfer direct to: Account No 52612236. Sort code 60-01-35.

### THE VILLAGE SHOP HOOK NORTON

\*National Lottery\*

Grocery - Greengrocery - Bakery - Wines  
Spirits - Confectionery - Newspapers  
Magazines - Cards - Bottled Gas  
Open Monday to Friday  
8 am to 8 pm  
Saturday 8 am to 8 pm  
Sunday 8 am to 6 pm  
Telephone: 01608 737245

### RICHARD WALLINGTON BUILDER

Block paver drives a speciality  
Also Extensions, Patios  
Fencing etc.  
High Quality Work - Free Estimates  
T 01295 780705  
Mobile 07743 932545  
(Sibford Gower)



## The Firs Garage

[www.firs-garage.com](http://www.firs-garage.com)

Family business established 1960



New Mitsubishi Outlander PHEV  
full sized family 4x4 plug-in hybrid,

Extensive stock of new and  
used cars & 4x4's,  
economical & low road tax

Part exchange welcome

MOT All makes servicing

Parts Bodyshop Fuel

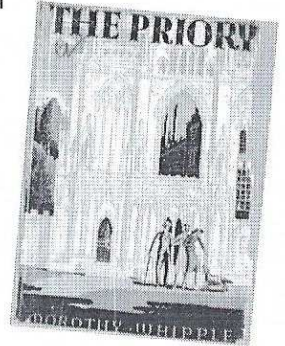
We look forward to seeing

## BOOK OF THE MONTH

What's the best book you have ever read? A memorable story that has stayed with you for some reason, or perhaps a book you return to again and again. Send me your suggestions for Book of the Month, along with a brief description, and we'll run them in the Sibford Scene, space permitting.  
E: [sibford.scene@btinternet.com](mailto:sibford.scene@btinternet.com)

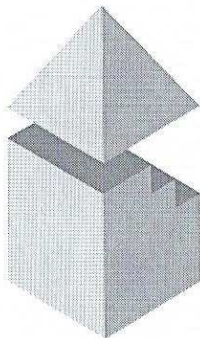
THIS MONTH ... *The Priory* by Dorothy Whipple

A delightful, amusing story about life above and below stairs. Set in pre-war England, the Marwood family live within the large, cold Saunby Priory and its crumbling estate. A widower for over 20 years with two almost grown-up daughters still living in the nursery on the top floor, Major Marwood takes a new young wife to run the house, cut down the household expenses, sort out the servants and organise his annual cricket match. A warm and well-observed story, Dorothy Whipple writes with gentle humour of the trials of growing up, love, good and bad marriage, money and cricket.



Published by the wonderful Persephone Books, who launched in 1998 to publish lost or out-of-print books. '*The nearest thing British publishing has to a cult*' (Observer).  
[www.persephonebooks.co.uk](http://www.persephonebooks.co.uk)

*Why not ask the mobile library to order you a copy? See the back cover for mobile library visiting dates.*



**DAVID BOVILL**

**ARCHITECTURAL AND PLANNING SERVICES**

• Providing a personal service from Design through Planning and Building Regulations, and beyond if required

Specialising in Extensions, Loft Extensions and Listed Buildings work

Please phone or e-mail to arrange a free initial consultation

01869 347906

[davidbovill@btinternet.com](mailto:davidbovill@btinternet.com)



# SIBFORDS WALKING GROUP

## Forthcoming Walks

**8 June, 22 June, 6 July, 20 July, 3 August, 17 August**

Leaving the village hall on foot or by car at 10.00 am sharp to do a circuit of approximately 2 hours' duration. Dogs welcome provided they are put on leads when requested, walking boots and poles are recommended but not compulsory. Everybody welcome. Enquiries to Sue Bannister. T: 01295 780365 or E: [sebannister@gmail.com](mailto:sebannister@gmail.com)

Please notify Sue, village footpaths warden, if you discover things that need repairing or cutting back on the footpaths within the Sibfords' parishes.



**C. A. Berger**

Painting & Decorating  
Interiors & Exteriors  
Residential & Commercial  
Carpentry Repairs  
and  
Property Maintenance

Mobile: 07875 212 315  
Office Tel/Fax:  
01295 738633

**GODSWELL NATURAL THERAPY CENTRE**  
Godswell Lodge, Church Street, Bloxham,  
OX15 4ES T: 01295 722788

Acupuncture • Body & Face Therapies • Bowen  
Technique • Chiropody/Podiatry • Cognitive  
Behavioural Therapy (CBT) • Continence Advice  
for women & men • Counselling • Cranio-Sacral  
Therapy • Homeopathy • Hypnotherapy • Lymphatic  
Drainage Massage • Massage (deep tissue, hot  
stone & Indian Head) • McTimoney-Corley Spinal  
Therapy • Nutritional Therapy •  
*Fully qualified and professional therapists*  
[www.bloxhamsurgery.co.uk](http://www.bloxhamsurgery.co.uk)

**For Practical Garden  
Assistance**

Please contact Nick Taylor  
T 07425 136992

E [johnnicktaylor31@gmail.com](mailto:johnnicktaylor31@gmail.com)  
01295 680206 or 01295 788397

All types of garden work undertaken

**Maths Tuition places  
available from September**

Experienced Maths Teacher based in  
Sibford Ferris available to tutor pupils in  
Year 6 and Secondary School at all  
levels including preparation for GCSE,  
AS and A2 examinations.  
For further information, call Helen  
T: 01295 788736  
E: [helen\\_earle@hotmail.com](mailto:helen_earle@hotmail.com)

# LETTERCARVE

HAND-CARVED HARDWOOD SIGNS FOR THE HOME AND WORKPLACE.  
SUITABLE FOR HOUSES, SCHOOLS, ESTATES, FARMS, STABLES, KENNELS, OFFICES.

**MADE LOCALLY IN SIBFORD GOWER.**

COM

# NEIGHBOURHOOD WATCH

Police phone: 101

Crimestoppers phone: 0800 555111

Trading Standards phone: 0845 0510845

June 2015 - At the recent Neighbourhood Watch meeting, PC Ian Allen from the Neighbourhood Police Team thanked NW members for the help and support they give the Police. He emphasised that we are 'the eyes and ears on the ground'. 101 calls cost 15p, but don't let 15p put you off; it is better to be safe than sorry. Emergency calls can delay the answering of 101 calls, so please be patient.

Michelle Miller gave advice on security, recommending texting alarm padlocks for sheds and garages and alarm padlocks for oil tanks. Other recommendations include: pinhole cameras used for spyholes in front doors, StranDNA door chains ([www.strandna.co.uk](http://www.strandna.co.uk)) and Minder Padlock Alarms ([www.personalalarms.com](http://www.personalalarms.com)).

SMARTWATER was also recommended: a forensic coding system, normally expensive, NW members can buy it for £15 while stocks last. The police find it very effective as it does not wash off. Please ask Mollie Mulley T: 01295 780629 if you would like a pot.

If you mark your jewellery etc. let your insurance company know - and also that you are in a Neighbourhood Watch area - this can help with insurance.

*Adrian, we would like to thank you for supporting Neighbourhood Watch in the "Scene" and wish you and your family all the best in the future. Caroline, thank you for becoming the new Editor - we wish you all the best.*

**Victoria Smith**  
**MASSAGE THERAPIST**  
**@ Serenity, Sibford Gower**

*"Life takes it out of you, but  
massage puts it back"*

**T: 07974 231571**

**Mick's Sticks**  
**Fire Lighting Wood For Sale**  
£3.00 per big bag  
Call in anytime and ask for  
Mick Canning at  
The Old Malt House, Sibford Ferris.  
T: 01295 780321



## LOCAL NEWS

### 1940s weekend at Upton House

Upton House & Gardens will be transported back to the 1940s for the weekend of 30 & 31 May giving visitors a fascinating glimpse of life on the home front. Have a pint in the 1940s pub, see how the home guard protected those doing vital war work, and understand how the women's land army, ARP wardens and Women's Voluntary Service played their part. Includes a selection of displays and vehicles outside, along with an amazing transformation inside the house.  
[www.nationaltrust.org.uk/uptonhouse](http://www.nationaltrust.org.uk/uptonhouse)

### Antiques Roadshow comes to Broughton Castle

Fans of the popular BBC television series, *Antiques Roadshow*, will be interested to hear that filming for the 38th series takes place in the grounds of Broughton Castle on Sunday 21 June. The doors open at 9.30 am and close at 4.30 pm and entry to the show is free. Some of Britain's leading antiques and fine arts specialists will be on hand to offer free advice and valuations to visitors. [www.broughtoncastle.com](http://www.broughtoncastle.com)

### Miss 'T' Catering

Catering for events including  
Anniversaries, weddings,  
christenings, birthday  
parties, funerals  
and private dinner parties.

~.~.~

Also available  
Cutlery and crockery hire.  
Contact Victoria Taylor on:  
Mob: 07841 910037  
Home: 01295 788924

### BOXERSIZE & METAFIT

FITNESS SESSION

Sibford Village Hall

Every Monday at 7 pm

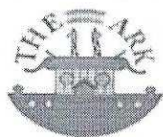
Non contact, great cardio burn,  
strength training, confidence boost,  
stress relief. Men and women  
welcome, all ages and abilities.  
For booking or further information,  
contact Lorraine on 07802 537100  
E: [willaminas@outlook.com](mailto:willaminas@outlook.com)

QUALITY FISH  
DIRECT FROM  
GRIMSBY MARKET  
Proprietor: T P Martin  
T: 07871 879197



Best fresh fish and shellfish to your area  
direct from Grimsby on the Lincolnshire  
coast. At Sibford Village Hall car park  
EVERY MONDAY from 4 'til 5.30 pm

## LOCAL NEWS



Congratulations to ex-Sibfords resident Julia Neal and her team, whose popular day nursery, The Ark at Epwell, has been rated 'Outstanding' in a recent OFSTED inspection.

The report concludes, *"The quality of teaching across the nursery is outstanding. Staff provide an excellent range of high-quality learning experiences for children. As a result, children are highly motivated, eager to explore and develop a curiosity for learning."*

Julia comments, *"This result is fantastic news for the staff, parents and above all the children, and I'd like to thank them all for contributing to the nursery's success!"*

Many children from the Sibfords benefit from this excellent early years facility. Well done to Julia and her team.

To find out more about The Ark, or to arrange a visit, contact: Julia Neal T: 01295 780580 or E: [Julia@arknursery.net](mailto:Julia@arknursery.net)

### Serenity Beauty Salon

Gautherns Barn, Sibford Gower  
Open Tuesday to Saturday 9am-4pm

Plus late night Wednesday's  
Specialists in Environ and Guinot  
Facials and Skincare

OPI Manicure and Pedicures  
Waxing, Massage, Lash Tinting  
and Removal of Skin Blemishes

Stockist of Jane Iredale

Mineral Make-Up

Contact Jo direct by email on

[joplum22@yahoo.com](mailto:joplum22@yahoo.com)

text 07891 220275 or leave a message on

01295 788463

£5 off a treatment with Jo with this ad!

### Holiday apartment overlooking Lake Trasimeno, Umbria, Italy

Self contained ground floor  
apartment; open plan lounge/  
kitchen /diner, 2 bedrooms,  
2 bathrooms, shared use of  
private garden/pool, panoramic  
lake views, close to bars,  
restaurants, shops and lake  
ferry.

See us on

[www.ownersdirect.co.uk](http://www.ownersdirect.co.uk)  
property ref IT12664

Or for further details, please  
contact local residents:  
[linckchick@gmail.com](mailto:linckchick@gmail.com)



# CHURCH SERVICES

Society of Friends	Sibford Gower, Sunday, 10.30 am
Roman Catholic Mass	Wroxton, Sunday, 9.00 am
	Brailes, Sunday, 11.30 am

## Holy Trinity Church, June 2015

<b>7 June</b>	10 am Benefice Service, Flowers' Farm, Tadmarton. Canon Glyn Evans preaching. All welcome. 6 pm Evening Prayer
<b>14 June</b>	8 am BCP Communion. 9.30 am Holy Communion. 6 pm Evening Prayer
<b>20 June</b>	10 am - 12 noon Coffee Morning
<b>21 June</b>	Fathers' Day. Antiques Roadshow at Broughton Castle. 10 am Family Service. 6 pm Evening Prayer
<b>28 June</b>	St Peter & St Paul. 9.30 am BCP Communion. Visiting preacher Rev Sally Musson from Hildenborough, Kent. 6 pm Evening Prayer.

## Reminder - Saturday 11 & Sunday 12 July

*175<sup>th</sup> birthday celebrations for Church*

**Saturday 11 July** - Party at the Primary School, 6 pm. ALL WELCOME. **Sunday 12 July** - Flowers in church. 11 am shared service with the Methodist congregation. 6pm traditional choral Evensong.

### RED HORSE VALE



All Types of Fuel, Coal, Smokeless, Gas, Logs Kindling, Barbecue Needs, Central Heating Oil, Oil Tanks & Coal Bunkers  
 Landscape & Building Materials  
 Garden Centre & Garden Supplies,  
 Farm & Country Sundries  
 Equestrian Products, Horse & Pet Feeds  
 Open: Monday - Saturday 8am - 5pm  
 Windmill Farm, Banbury Road (A422),  
 Oxhill, Warwickshire CV35 0RP  
 Tel: 01926 642832 Fax: 01926 642853  
[www.redhorsevale.co.uk](http://www.redhorsevale.co.uk)

### PC problems

*Get IT sorted*

- ★ **Qualified PC technician,**
- ★ **Expert advice,**
- ★ **Competitive rates,**

[www.oxoncomputers.co.uk](http://www.oxoncomputers.co.uk)

*Get IT sorted*

**Tel Dan: 01295 788766**

# SIBFORD BUS SERVICES

## Cherwell Rural Dial-A-Ride Scheme

A minibus with tail-lift to take the **elderly or disabled** and escort to Banbury (max fare £1.60) Door-to-Door service. Book at least one day in advance. Operates on Wednesdays & Thursdays.

T: 01295 263777 for details.

BCTA also takes bookings for groups of 8 or more on a weekly/monthly basis (Wednesdays & Thursdays) to and from Banbury. T: 01295 263777

## Stagecoach – Timetable

Mondays to Saturdays

(No services on Sundays or public holidays)

### Bus 50A Banbury to Stratford-upon-Avon

Banbury, Bus Station	08.30	10.55	12.45	14.26	16.05	17.10	18.10
Sibford Ferris, crossroads	08.52	11.17	13.07	14.48	16.27	17.32	18.32
Sibford Gower, School	08.55	11.20	13.10	14.51	16.30	17.35	18.35
Shipston on Stour	09.15	11.40	13.35	15.11	16.50	17.55	18.55
Stratford on Avon, Wood St	09.40	12.09	14.04	15.40	17.19	18.24	19.24

### Bus 50A Stratford-upon-Avon to Banbury

	<i>NS</i>					<i>Sch</i>	<i>Term</i>	
						<i>Hols</i>	<i>time</i>	
Stratford, Wood St	06.20	07.10	09.05	11.10	13.10	<i>15.10</i>	<i>15.24</i>	16.24
S Gower, School	07.04	07.55	09.56	11.56	13.56	<i>15.56</i>	<i>16.10</i>	17.14
S Ferris, crossroads	07.07	07.58	09.59	11.59	13.59	<i>15.59</i>	<i>16.13</i>	17.17
Banbury, Bus Station	07.28	08.25	10.21	12.21	14.21	<i>16.21</i>	<i>16.35</i>	17.39

NS = Not Saturdays

All buses operate low floor wheelchair accessible vehicles. For complete details of all stops served by service 50A, timetables are available from the Tourist Information Centre, Castle Quay, Banbury.

## Fares

Sibford Ferris & Sibford Gower to Banbury:

Single £2.80 (Child £1.25) Return £5.25 (Child £2.35)

Sibford Ferris & Sibford Gower to Stratford:

Single £4.30 (Child £2.85) Return £6.30 (Child £4.20)

Unlimited travel Cards are available for 1, 7 or 28 days but are regional and must be bought in advance. Contact the Stagecoach office, Stratford T: 01789 412680.

## CALENDAR OF EVENTS

### JUNE

- Wed 3 Mobile Library in the Sibfords, 2.40 - 4.10 pm  
Sat 6 Village Hall Dog Show, 1.30 pm  
Sun 7 Grand Opening, Primary School orchard, 2 - 5 pm  
Mon 8 Sibfords Walking Group, Village Hall, 10 am  
Tue 9 Sibford WI Meeting, Village Hall, 2 pm  
Wed 10 Horti Society visit to Stretton-on-the-Fosse, 6 pm  
Wed 17 Mobile Library in the Sibfords, 2.40 - 4.10 pm  
Thu 18 *The Tempest*, Holly House, Sibford Ferris, 7.30 pm  
Sun 21 NGS Open Gardens, Sibford Gower, 2 - 6 pm  
Sun 21 Antiques Roadshow, Broughton Castle, from 09.30 am  
Mon 22 Sibfords Walking Group, Village Hall, 10 am  
Thu 25 Village Hall Film Night, *Before I Go To Sleep*, 7 pm  
Sat 27 *Damn Right I Got The Blues*, Village Hall, 7 pm

### JULY (PART)

- Wed 1 Mobile Library in the Sibfords, 2.40 - 4.10 pm  
Sat 11 Church 175th birthday party, Primary School, 6 pm  
Tue 14 Sibford Gower Parish Council Meeting,  
Primary School, 8 pm  
Wed 15 Mobile Library in the Sibfords, 2.40 - 4.10 pm  
Thu 23 Village Hall Film Night  
Wed 29 Mobile Library in the Sibfords, 2.40 - 4.10 pm

### JUNE BIN COLLECTIONS

Green	Wednesday 3 & 17 June
Brown and blue	Wednesday 10 & 24 June

### SIBFORD SCENE

DEADLINE FOR JULY/AUGUST ISSUE - 23 JUNE 2015

Editor: Caroline Seely, Home Farm, Sibford Gower, OX15 5RS  
E: [sibford.scene@btinternet.com](mailto:sibford.scene@btinternet.com)

Ads: Ivor Hopkyns, Elmridge Farmhouse, Sibford Gower, OX15 5RT  
T: 01295 788367  
E: [sallyandivorhopkyns@hotmail.com](mailto:sallyandivorhopkyns@hotmail.com)

780206