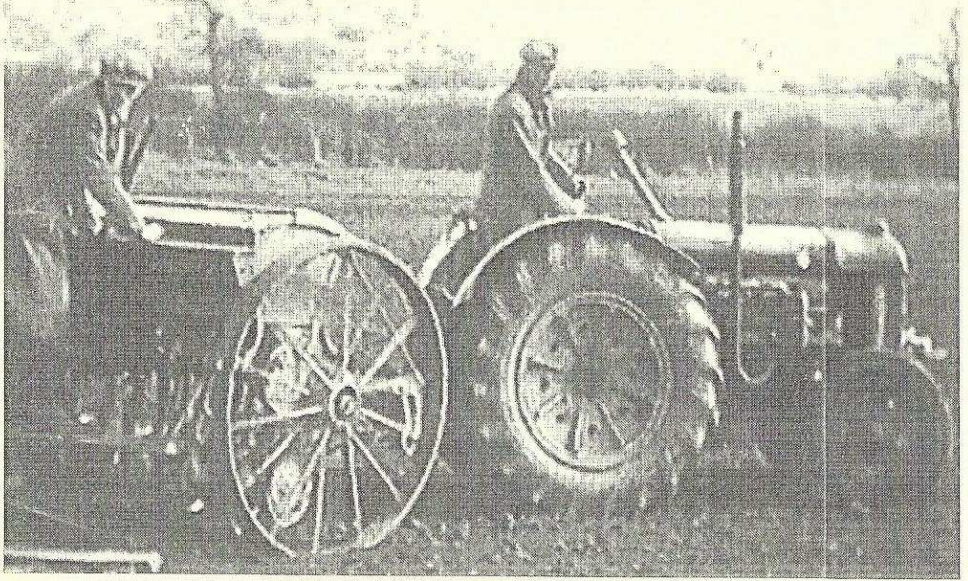


Sibford Scene



May 2015

No. 372

Café Scientifique

Oliver Studio at Sibford School on Wednesday 6th May

Guest Speaker - Professor Richard Cooper

Sibford Horticultural Society Spring Show

Saturday 15th May in the Village Hall 2.30 - 4.00 pm

Entry Night - Wednesday 13th May 6.30 - 7.30 pm (Small Hall)

Celebration Concert of Guy Woolfendens Music

RSC Swan Theatre, Stratford-upon-Avon

Sunday 24 May 2015, 3.00pm

Village Hall Film Night

The Theory of Everything

Thursday 28th May 7.00pm

Nature Notes

Apr 3rd Since I read the piece about clap netting or sparrow catching in last months Sibford Scene I have read again an old book that has a chapter on the capture of song birds. Writing in 1889 Charles Dixon says that in the autumn every game dealers shop has bunches of larks hung up for sale and they are on the menu of all smart London hotels. Many of these were caught in nets which, during the night, were dragged across grass fields where larks often roosted after flying across the German Ocean (North Sea). As the nets passed over, the larks would fly up some of them getting entangled in the net. Also on their menu are quail and ortolan which are mostly caught in Southern Europe and brought to London in cages via Holland or Belgium where they are fed well until deemed fat enough for tables of the best hotels. Charles Dixon thought that many of the birds served in hotels were not larks or ortolans as stated on the menu but "house sparrows which are easily caught in clap nets from ivy covered houses". He also says that in the south of France and Italy the bird markets have heaps of small birds for you to choose from including blackcaps, garden warblers and nightingales. In Rome robins are reputed to be the daintiest morsels and may be seen in large quantities on the stalls.

Apr 5th Of the three rooks nests in one of our silver birches the wind has blown one out and broken the branch that held another leaving it hanging upside down and today there were two rooks carrying away the twigs. I won-

HOLMBY HOUSE

SIBFORD FERRIS

A stunning setting for special celebrations

From Buffets to Gourmet Dinners

Formal dining for large groups

Garden parties Business meetings

Wedding receptions

Luxurious B & B

Self-catering accommodation

Tel/Fax:01295 780104

www.holmbyhouse.com

Sally.wass@btinternet.com



BESPOKE DESIGN SERVICE FOR
CUSTOM MADE FURNITURE

Curtains, blinds & Cushions

Loose covers

Headboards & bedspreads

Curtain poles & tracks

New Sofas & chairs & reupholstery

Lampshade making

01295 788145

info@annwoolgrove.co.uk

www.annwoolgrove.com

www.yarnhill.co.uk

dered whether they were the owners reconstructing it in a safer place or others raiding it to repair their own nests. After going out to lunch we came back home to find a sparrowhawk on the lawn eating what I am afraid was a stock dove. It eventually flew away with it. I would rather it had been a wood pigeon as there are plenty of them but I don't know that there are more than the four stock doves that come regularly to feed.

Apr 7th Bats are active this evening after a warm day with a sunny afternoon.

Apr 8th A blackcap is singing and I have seen a tortoiseshell, brimstone and peacock butterflies in the garden today.

Apr 14th I have seen two speckled wood butterflies today but have not yet seen an orange tip which is usually the first spring hatched butterfly to be seen.

Apr 16th Miner bees have been working among the plants in one of our stone troughs. There are six conical piles of dust rather like volcanoes with craters. I read that the bee digs its hole, provisions it with pollen and nectar and lays several eggs before leaving. They then have to look after themselves.

Apr 21st Today we came across a patch of hard ground where there were probably a hundred miner bee mounds. We also saw two orange tip butterflies. My grand daughter found two grass snakes at Hill Bottom sadly both dead. What or who killed them was not obvious.

Something Different

My new exhibition will showcase an exploration of the semi-abstract landscape along with a series of watercolours inspired by light and colour

2nd - 17th May

**11am - 6pm every day
Swalcliffe Village Hall**

www.nigelfletcher.co.uk

PILATES IN SIBFORD

Madeleine Wilson M. Sc.
Mat & Studio Master Teacher
Offers

Bespoke One to One
and Duet sessions

Training on Specialised Pilates
Equipment

Reformers, Chairs, Barrels
& Cadillac & Small Group
Matwork Classes

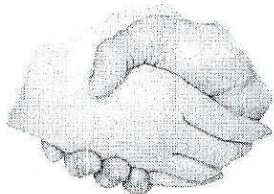
For all Levels from Beginners to
Advanced

Tel: 01295 780279

Mob: 07905 953300

E: mwl@linuxwaves.com

www.pilatesinsibford.co.uk



Friendship Club

Once again we were blessed with very good weather for our trip to Bourton on the water. All had a lovely day out. The AGM of the Club will be held on

May 5th ...will ALL members try to attend. 2pm in the small hall of the village hall.

Then on the 19th of MAY we are going to Cotswold Wildlife

Park and afterwards we will drop into Burford Garden Centre for a last minute cup of tea. Any one wishing to join us please call the Secretary on 263460 for details.

Victoria Smith
MASSAGE THERAPIST
@ Serenity, Sibford Gower
"Life takes it out of you, but
Massage puts it back"
07974 231571

Sibford Stores & Post Office, Sibford Ferris

OX15 5RG

Telephone 01295 788317 / 788348

YOUR LOCAL CONVENIENCE STORE AND NEWSAGENT

We deliver newspapers and magazines 7 days a week to all the surrounding area.

Place your regular order today, whether for 1 day a week or 7. Always a wide selection of magazines available, specialist titles available to order.

Chilled & Frozen foods, groceries, cigarettes, beers, wines and spirits, fresh fruit and vegetables, pet foods, household goods, toiletries & medical requisites and lots, lots more.....

Health Lottery, Photocopying, fax service, dry cleaning

We will also undertake your mailings for you, just ask.

Always an excellent selection of Hook Norton bottled beers in stock.

Telephone your grocery order for free local delivery.

OPENING HOURS

Monday to Saturday 7.30am to 7.30pm

Sunday 7.30am to 4.00pm

PLEASE SUPPORT YOUR LOCAL POST OFFICE, THERE ARE LOTS OF PRODUCTS AND SERVICES AVAILABLE ON YOUR DOORSTEP

We have a new editor!

This is the last Sibford Scene I will be in charge of as we have Caroline Seely taking over as Editor.

Caroline Seely, Home Farm, Sibford Gower OX15 5RS
Email sibford.scene@btinternet.com

As you see there is a new dedicated Sibford Scene email address so if all contributors would update their address lists that will make the transition to Caroline much easier. As with any new undertaking there are many things to learn so I'm sure that early contributions for the next couple of issues would be a great help while Caroline is getting to grips with the process.

The very best of luck!
Adrian Lamb (retiring Editor)

LOGS, HAY,
STRAW
Garden Manure
Antony Sabin
01295788421



The Firs Garage

www.firs-garage.com

Family business established 1960



Tel: 01608 737349 / 737641

Hook Norton, OX15 5DD



New Mitsubishi Outlander PHEV
full sized family 4x4 plug-in hybrid,
incredible mpg & zero road tax

Extensive stock of new and
used cars & 4x4's,
economical & low road tax

Part exchange welcome

MOT All makes servicing

Parts Bodyshop Fuel

*We look forward to seeing
you, the kettle is on!*

Sibfords Walking Group
Forthcoming Walks

4 May 18 May 8 June 22 June 6 July 20 July 3 August

Departure from the Village Hall car park at 10am sharp for a circular walk of approximately 2 hours. We recommend boots and walking poles but they are not compulsory. Dogs are welcome provided they are put on a lead when requested. Please contact Sue Bannister on

sebannister@gmail.com or
01295 780365 for any clarification.

All welcome!

YOGA

Sibford Village Hall

Tuesdays 9.00 -10.00am

Fridays 9.00 -10.00am

(beginners welcome)

New Thursday class starting on

16th April 7-8pm

Any enquiries to: Juliette

07703 836 856

Juliette53@btinternet.com

Drop-in £7.00



LOGS



TOP QUALITY, SPLIT,
SEASONED, HARDWOOD LOGS
STACKING SERVICE AVAILABLE

DAVID RANDALL

01608 738109 or 07581 205451

E:MAIL katylou63@sky.com

- Bespoke bathrooms, kitchens and carpentry
- Fitted furniture
- Plumbing and electrical works
- Home improvements and renovations

Hugo Seely

Trading in the Sibfords since 1992

From concept to completion

*Exceptional value,
exceptional service*

T: 01295 780355

or 07773 319239

E: hugo.seely@gmail.com

Excellent references

Report of Sibford Gower Annual Parish Meeting held in Sibford Village Hall on Wednesday, 15th April 2015

Present were the Parish Councillors (with the exception of two from whom apologies were received), County and District Cllr George Reynolds, Mrs Maureen Hicks (on behalf of Sibford Ferris Parish Council), Peter Hardman (Clerk) and twenty two local residents. The Rev Ronald Hawkes and Judith Weeks had been invited and they presented, respectively, reports on behalf of Holy Trinity Church and The Friends Meeting House. Next year, invitations will be extended to the Primary School and the Surgery. The Clerk gave his financial report and he thanked Mr David Soden for carrying out the internal examination of the accounts for the year ended 31st March 2015 and, in due course, they will be presented to the Parish Council for approval before submission to the External Auditor. He then referred to the Village Pond in respect of which the Parish Council submitted in January 2014 an application to Oxfordshire County Council to register it as a town or village green. A decision is awaited but the Parish Council was advised that the time being taken is not unusual. No one from Thames Valley Police and Oxfordshire Highways was available to attend the Meeting. With regard to Highways, matters requiring attention had been dealt with by Oxfordshire Highways although some more work is necessary in Colony Road where ditches again need to be cleaned out. With regard to the public footpath from Backside Lane leading down to Main Street there is a problem in that, from time to time, parked cars in Main Street make it difficult for users of the path to step to or from the path onto or from the road. This makes things difficult for the elderly. The Clerk was instructed to contact Oxfordshire Highways to ask for a white line to be marked on the road. Concern was expressed by



Vanda's Ironing Service

Covering the Sibfords and surrounding villages

01295 780071 07776 101 571

sibfordironingservices@gmail.com

Per basket*, collected and returned by us - £20**

Per basket*, delivered and collected by you - £15

Prices per item

Shirts/Blouses - £1.50 Skirts/Trousers - £1.35

Sweatshirts/Long-sleeved tops - £1.25 T-shirts/short sleeved tops - £1.10

Bedding - per set

Super King - £4.00 King - £3.00 Double - £2.50 Single - £2.00

*basket - (level basket) = one full machine load/approx.

3 carrier bags full or per item, if less than a full basket

**delivery within 10 mile radius of Sibford



a resident about cars parked partially on pavements making it difficult for users of mobility vehicles. Reports were then received from The Town Estate Charity, Neighbourhood Watch and Sibford Village Hall.

No further matters were raised and the Chairman closed the Meeting at 8.50pm. Minutes of the Meeting and relative appendices are available from the Clerk (Tel: 01295 780391) upon request.

Sibford Gower Annual Parish Council Meeting held on 20th April 2015

Because this Meeting took place only a couple of days after the Annual Parish Meeting there were very few matters to discuss. Cllrs Oswyn Murray and Peter Abbott were re-elected as Chairman and Vice-Chairman. The accounts for the financial year ended on 31st March 2015 are currently with the Internal Examiner and will be submitted to the Parish Council in due course. The Parish Councillors acknowledged their responsibility for ensuring that there is a sound system of internal control and this was exercised during the financial year. With regard to the Miriam Tebbs' Land, a small committee is to be formed to take matters forward and Cherwell District Council will have to be involved as the land is in a conservation area. Turning to the matter of the Village Pond, the application made to Oxfordshire County Council to register it as a Town or Village Green has been declined because 'there is some evidence of use of the surrounding land and naturally the pond forms a focus for such use but that does not constitute the use of the pond itself'. The Parish Council will now respond to this refusal. The Clerk will look into a comment that there may be a possible hazard on one of the footpaths. Cllr Susan Bannister, who keeps an eye on the village footpaths, liaises with the Ramblers Association who take matters forward with the Authorities when problems occur. Future Parish Council Meetings will take place in July and October with the dates to be advised in due course. The Chairman thanked all present for attending and closed the Meeting at 8.40pm.

Jennifer Wealsby- Art and Design

Tutor of drawing and painting classes since 1988

Mondays 10-12am Sibford Village Hall , Small Hall. - Pastels

Fridays 1-3pm Sibford Village Hall- Drawing and watercolour
also

Wednesdays 9.30-11.30am at Churchill Village Hall

Wednesdays 1-3pm Spelsbury Memorial Hall

Fridays 9.30-11.30am Holly Tree Deddington

(All Drawing and watercolour classes)

To register your interest in these any of these classes or find out more details you can ring me on 01608 730401 Or email jgw4art@gmail.com



Sibford Horticultural Society

Our last meeting saw Richard Hopkins from Applegarth Nurseries come and talk to us about how he came to work with plants. Being the 5th generation of his family to work with plants, it was interesting to hear how things have changed, often not for the best. A big thank you to Richard for stepping in at the last minute.

Our next meeting will be on Wednesday 13th May at 8 pm in the Small Hall where Tom Duncan will talk to us about Irish Gardens.

Horticultural Society Spring Show

The Spring Show will take place on Saturday 16th May 2.30 - 4.00pm at the Village Hall. Entry Night is Wednesday 13th May from 6.30 to 7.30pm so make your entries and stay on for the speaker.

The schedules came with last months Sibford Scene so look through it to find the classes you can enter. We can only stage a show if you enter so don't leave it to someone else, have a go yourself.

The more the merrier!

For Practical Garden Assistance

Please contact Nick Taylor

07425136992

johnnicktaylor31@gmail.com

01295 680206

01295 788397

All types of garden
work undertaken

Micks Sticks

Fire Lighting Wood For Sale

£3.00 per big bag

Call in anytime and ask for

Mick Canning, at

The Old Malt House,

Sibford Ferris

Tel; 01295 780321

OPUS

OPUS

Property

Services Ltd

01295 780652

07816592124

All aspects of property maintenance and refurbishment undertaken from replacement light bulbs and tap washers to new ceilings and floors.

Plumbing, tiling, wood flooring, floor renovation, under floor heating, plastering, electrics, decorating, damp proofing, carpentry, locks, drains, kitchens, bathrooms etc

Call us or visit our website for
more information:
www.opusps.co.uk

VILLAGE HALL NEWS

Thanks to those 80 [plus mums./dads/grandparents] who took part in our Easter Egg Trail. The weather was unkind, but everyone came back looking happy! A big thank you to the helpers as well.

FILM NIGHTS

Our next film is on May 28th, when you can see "The Theory of Everything", a film about the life of Stephen Hawking. Doors open at 7pm, film to start at 7-30pm. Drinks available or bring your own wine. Following dates for films are June 25th and July 23rd.

DOG SHOW

is on June 6th, starting at 1.30pm. Entries will be taken from 12-30pm. There is a mix of Fun Classes to suit all sorts of shapes and sizes of dog. Bar and BBQ available. Classes will soon be on the sibfords website, so why not print off your copy. Entries can be given before the day to Ginny or call 01295 780373.

DAMN RIGHT I GOT THE BLUES

are coming to Sibford!! June 27th is the date. Licensed bar open from 7pm. BBQ. Tickets are £12-50 each, and should be bought before the day. CHECK OUT our new Facebook page, via the new SIBFORD HALL PROMOTIONS webpage, coming soon to the Sibfords website :<http://thesibfords.org.uk/org/sibford-hall-promotions> for latest information and ticket availability.

Sibford Hall Promotions presents SUMMER REWIND with David Alleyn's Rockoustic, and friends, on Saturday August 29th 2015. David Alleyn is a newcomer to our village and, following his

Holiday Let
For 1 or 2 people
In quiet, self-contained
annexe
Contact Judy Abbott
01295 780731

BOXERSIZE and METAFIT FITNESS SESSION

Sibford Village Hall
Every Monday at 7pm from Feb 16th
Non contact, Great cardio burn, Strength
training, confidence boost, Stress relief
Men and women welcome
all ages and abilities.
For booking or further information
contact Lorraine on 07802537100
willaminas@outlook.com

guest performance at the Sibfords Society Social in February, he has kindly offered to play his full Rockoustic set to launch our new, late summer, charity musical event - the Sibford SUMMER REWIND! David's music will also rewind, through six decades of rock classics and quirky covers - acoustic with attitude - and may include some surprise guest performers along the way. Bring your friends and family, eat and drink at the BBQ and bar, and let your hair down one last time before the kids go back to school! Sibford Hall promotions hope that you will give your support to this new event in aid of your Village Hall Charity, and that this will become the first of many future SUMMER REWINDs Again CHECK OUT our new web-page.

VILLAGE FAYRE is on September 26th

SIBFORD VILLAGE HALL LOTTERY WINNERS!

1st Mr & Mrs Crabtree , 2nd Mrs K Healey, 3rd Mr N Fletcher,
4th Mr&Mrs Hughes. Congratulations to all!

VILLAGE HALL FIELD

It is lovely to see so many people enjoying using the field and goalposts now the fine weather has arrived. PLEASE, PLEASE take your rubbish home with you or use the dustbin beside the hall. Please do NOT jump over the play area fence to retrieve balls etc, as the palings come loose and have to be repaired.

Serenity Beauty Salon

Gautherns Barn, Sibford Gower

Open Tuesday to Saturday 9am-4pm

Plus late night Wednesday's

Specialists in Environ and Guinot

Facials and Skincare

OPI Manicure and Pedicures

Waxing, Massage, Lash Tinting

and Removal of Skin Blemishes

Stockist of Jane Iredale

Mineral Make-Up

Contact Jo direct by email on

jo plum22@yahoo.com,

text 07891 220275 or leave a message

on 01295 788463

£5 off a treatment with Jo with this ad!

Holiday apartment overlooking
Lake Trasimeno, Umbria, Italy.

Self contained ground floor apartment; open plan lounge/ kitchen /diner, 2 bedrooms, 2 bathrooms, shared use of private garden/pool, panoramic lake views, close to bars, restaurants, shops and lake ferry. See us on

www.ownersdirect.co.uk
property ref IT12664

Or for further details; please
contact local residents:-

linckchick@gmail.com

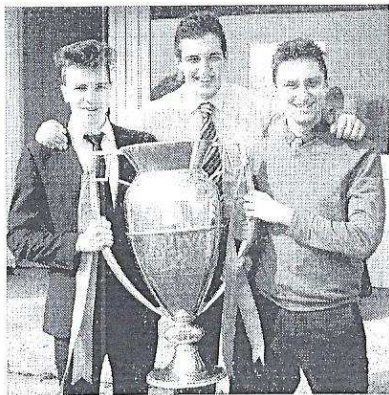


SIBFORD RUGBY PLAYERS ENJOY A TOUCH OF SUCCESS

Rugby players at Sibford School enjoyed a touch of success when the Premiership Cup arrived on campus courtesy of current champions Northampton Saints.

The impressive trophy was on display to mark the start of Sibford's annual Rugby Sevens Tournament. Now in its 17th year, the tournament is supported by the Northampton Saints Community Coaching team and also features the Oxfordshire regional tournament of the Elite Insurance Sevens Series for Under-13s, where pupils compete for the opportunity to play at The Saints' Franklin's Gardens ground.

Pictured: Sibford Under 18 players, Callum Pharo, Oliver Rigby and Tom



Meredith with the Championship Trophy.

WHOLE SCHOOL OPEN MORNING

Sibford will be holding a whole school Open Morning on Friday 1 May to give parents a chance to find out more about the school. The event starts at 9.45am and will include a presentation by head, Michael Goodwin, a guided tours of the school and refreshments.

EARLY YEARS OPEN AFTERNOON

Youngsters between the ages of two and four are being invited to join some of Sib-

ford's youngest pupils as they go on a bear hunt!

On Wednesday 6 May, the school will be hosting an Early Years Open Afternoon between 2pm and 3.30pm.

Parents will have the opportunity to find out more about Sibford's provision for children aged three to five, meanwhile little ones can enjoy a host of free activities based on the popular Michael Rosen book, 'We're Going on a Bear Hunt'. For further details call Elspeth on 01295 78120 or visit the school website (www.sibfordschool.co.uk)

Café Scientifique

Professor Richard Cooper, head of chemical crystallography at the University of Oxford will be guest speaker at the next Sibford Café Scientifique, which takes place at the school on Wednesday 6 May. All welcome

MAY FUN IN THE COUNTRY

Sibford School's popular Fun in the Country holiday club returns for May half term. From Tuesday 26 May through to Friday 29 May, children can

enjoy a range of activities including swimming, crafts, sports and cooking.

Cost is £28 per child per day. To book a place call Elspeth Gregory on Banbury 781203 or email: funinthecountry@sibfordschool.co.uk.

RAIN OR SHINE THEATRE COMPANY

The Rain or Shine Theatre Company will return to Sibford School next month with their production of Shakespeare's *The Tempest*.

The Gloucester-based company has been a popular feature in the school's calendar since their debut visit in 2010.

This year's performance, which will take place in Sibford's Holly House gardens on Thursday 18 June, will encompass comic capers, romantic encounters, villainous plots and a host of apparitions and spirits.

The gardens open at 6.30pm for picnics and the performance starts at 7.30pm. Tickets cost £13 for adults, £11 for concessions and £6 for children. To book call 01295 781216.

*Pictured: Members of the Rain or Shine Theatre company are pictured at Sibford School during their 2014 performance of *The Merchant of Venice*.*



Damian and Debbie

Welcome you to enjoy the atmosphere of our 16th century thatched Inn.

- Bar and a la carte menus available lunch & dinner.
- Excellent Sunday lunch - to suit the weather!
- New food and wine takeaway menu.
- Wednesday steak and wine night £15.00
- Selection of fine wines and real cask ales.
- Happy hour and a half every Wednesday evening!
- Gift vouchers available.

THE
WYKHAM
ARMS

Temple Mill Road
Sibford Gower
Nr. Banbury
OX15 5RX

Tel: 01295 788808 / 07

Take a look at our new website
www.wyksamarms.co.uk

email:
info@wyksamarms.co.uk

Opening Times
12.00am-3.00pm
6.00pm-11.30pm

Bar only Sunday Night
Closed all day Monday
(Except bank holidays)

*The
Staffordshire
Society*

In 2005 the Battlefields Trust encouraged a group from the History Society in Kington to do metal detecting all over the site of the Battle of Edge Hill, between Edge Hill and Radway. Two and a half years later their work was

completed. A dedicated band of local people spent most Sundays on this battlefield, where the first pitched battle of the English Civil War was fought on Sunday, 23 October 1642, between the Royalists, led by Prince Rupert, with Charles 1 and his sons all present, and the Parliamentarians under the Earl of Essex. Approximately 500 men were killed on each side. The result of the battle was said to be inconclusive, although the King had lost the chance to return to London and withdrew to Oxford to make this his headquarters. This battle was one of the steps which led to the dire end of Charles I

Our talk on Thursday April 16 was concerned with the retrieving of artefacts from the battlefield, and David Beaumont, who was always at the forefront of the metal detecting enthusiasts, gave us a highly informative description of the work they had done, the results and the significance of their finds, and he also told us what this survey had led to, including more searching of other battlegrounds, Flodden and Bosworth, and later detection work on the Staffordshire Hoard. He brought us a selection of finds, including some double case shot, pistol, carbine and musket balls, a small cannon ball, a piece of lead which held a flint lock pistol, even an Elizabethan silver sixpence.

Each of those scraps of metal and stone, objects people invented all those hundreds of years ago to destroy each other with, is vital historical evidence, and it must have been thrilling every time a new discovery was

made. Each contributes to forming a picture of life and death at that time.



YARN HILL
HANDMADE LAMP SHADES

BESPOKE HANDMADE LAMP SHADES
PERSONALISED DESIGN SERVICE
CONTEMPORARY AND CLASSICAL DESIGNS
EXTENSIVE RANGE OF FABRICS AND MANY BEAUTIFUL TRIMS
RE-COVERING SERVICE AVAILABLE

ANN WOOLFPOVE
TEL/FAX: 01295 788145
ann@yarnhill.co.uk
Oxfordshire/Oxford

LYNN HAMPTON
TEL: 01442 795577
lynn@yarnhill.co.uk
Herefordshire/Hereford

www.yarnhill.co.uk

Bed & Breakfast

AGDON FARM

Nr Brailes

Comfortable rooms

in old stone farmhouse

Tel: Maggie Cripps

01608 685226

Certainly the Sibfords Society members were fascinated by David's talk and much appreciated his tireless sharing of knowledge of his subject. We will be able to find out more about the Battle of Edge Hill when we visit Radway on July 16th to view a new exhibition in the church, when David will take us around the exhibits and the village.

Those interested in the Battlefields Trust may like to attend a talk at Banbury Museum at 2.30 p.m. on Saturday, 16th May entitled 'Finding Bosworth :The Search for the Battle that killed a King'. For tickets contact the museum at: 01295 753752.

Our next meeting will be on May 21, when Philip Jarvis will be giving a digital presentation on the Gloucester and Warwickshire Railway. If you would like to take part in the steam train trip to Cheltenham on June 18 please be prepared to sign up for this and pay the £15 on this evening. The meeting is at the Village Hall, doors open 7.45 and the talk begins at 8 p.m.

Diana Hughes



KING UNDER THE CAR PARK

A TALK BY RICHARD BUCKLEY, LEADER OF THE
ARCHAEOLOGICAL TEAM WHICH DISCOVERED
THE BONES OF RICHARD III

MAKE A NOTE IN YOUR DIARY:

THIS TALK WILL BE HELD IN SIBFORD VILLAGE HALL ON
THURSDAY 19TH NOVEMBER 2015 AT 8PM. (DOORS OPEN 7.45)
SEATING IS LIMITED SO IT IS ADVISABLE TO GET YOUR TICKETS IN
ADVANCE! £8 FROM DIANA HUGHES - CALL 01295 780506.

MEMBERS FREE

Richard Wallington
Builder

Block Paver Drives a Speciality
Also Extensions, Patios
Fencing etc.

High Quality Work, Free Estimates
01295 780705 07743 932545
(Sibford Gower) (Mobile)

THE VILLAGE SHOP HOOK NORTON

NATIONAL LOTTERY

Grocery - Greengrocery - Bakery
Wines - Spirits - Confectionary
Newspapers - Magazines
Cards - Bottled Gas
Open Monday to Friday
8 am to 8 pm
Saturday 8 am to 8 pm
Sunday 8 am to 6 pm
Telephone: 01608 737245

'Space for Art'

Need more space for your artistic endeavours?

Are you an artist that needs to rent a space in which to work?

Please contact 01295 788092 if you would like to express an interest

in *The Quaker Mission Room Artist Space* in Sibford Gower

£25 p/w + bills

One Day Closure of the Meeting House grounds

Please be advised that from midday May 3rd to midday May 4th 2015

the gates to the grounds of Sibford

Gower Quaker Meeting House of

the Religious Society of Friends

will be locked. As in the Millennium

Field, this prevents a concessionary

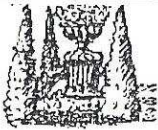
path from becoming a public right of way.

If access to the burial ground or the

Meeting House is required during

these times please ask at Meeting

House Cottage and this can be arranged.



BED AND BREAKFAST

Buttslade House, Sibford Gower

offers supremely comfortable en suite accommodation in the charming setting of a tranquil English country garden.

Contact Diana Thompson

01295 788818

Or diana@buttsladehouse.co.uk

www.buttsladehouse.co.uk

Miss 'T' Catering.

Catering for events such as:

Anniversaries, Weddings,

Christenings, Birthday parties,

Funerals

And private dinner parties.

~.~.~

Also available

Cutlery and Crockery Hire.

Contact Victoria Taylor on:

Mob: 07841 910037

Home: 01295 788924



QUALITY FISH

DIRECT FROM

GRIMSBY MARKET

Proprietor: T.P.Martin

Tel: 07871 879197

Best fresh fish and shell fish to your

area direct from Grimsby on the

Lincolnshire coast

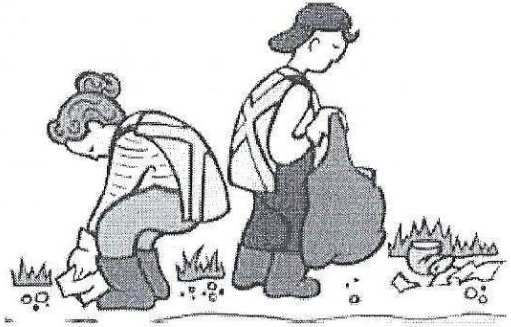
I'll be at Sibford Village Hall car park

EVERY MONDAY from

approximately 4pm till 5.30pm

Sibford Ferris Litter Pick

A huge thank you to those who came to help tidy up our parish. It's a great shame that only 10 households of the 170 or so in the parish managed to make the effort to help, given that, in the responses to the Community Plan questionnaire the vast majority highlighted the beauty of the area as a reason to be here. Maybe all those will be joining us next year!



WELCOME TO SIBFORD

If you are a new resident of Sibford or have new neighbours who have not yet received a copy of the “Welcome to Sibford” booklet, please telephone Ivor Hopkyns on 788367 (Gower or Burdrop) or Nic Durrant on 788865 (Ferris), and a copy will be delivered to you. The information will help to make you feel at home - by acquainting you with the services, schools, clubs and societies that are currently active in the villages.

Colour Analysis by Annie Broe

I will show you which colours are best for you.

Wearing the right colours is an easy and effective way to enhance your appearance.

You will instantly look more radiant, younger and healthier

You will feel more confident

Colours are very powerful – use this power to your advantage and look fantastic!

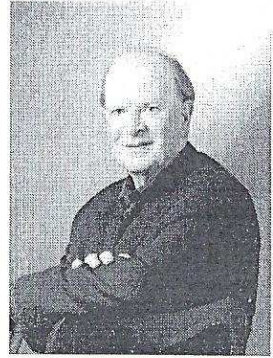
Gift Vouchers available – the perfect present

For a personal colour analysis or for more details please call me on 01295 780637 or 07930 398151 or email annie4colourandstyle@gmail.com



BIRMINGHAM
SYMPHONIC
WINDS

Join us for a celebration
of the music of
Guy Woolfenden
RSC Swan Theatre,
Stratford-upon-Avon



Sunday 24 May 2015, 3.00pm

British composer and long-term Sibford Ferris resident, Guy Woolfenden OBE was Head of Music at the Royal Shakespeare Company for 37 years, working with some of the company's finest actors and directors. Many Sibford residents will also know Guy as an active member of our community, supporting the village via fundraising concerts and composing music for the Village Pageant in 2000 which was recorded by the 45 strong orchestra Birmingham Symphonic Winds, of whom Guy is Patron.

Sadly Guy was recently diagnosed with Alzheimer's disease. In celebration of Guy's lifetime of music-making, Birmingham Symphonic Winds (conductor Keith Allen of Sibford Gower) will perform all 15 of Guy's pieces for wind band in the presence of the composer on Sunday 24th May 2015 in the RSC Swan Theatre, Stratford-upon-Avon at 3.00pm.

We would love to see as many villagers at the concert as possible to support Guy and to make this one-off occasion really special.

Guy wrote over 150 scores for numerous RSC productions and adapted some of this music for performance in the concert hall. Guy Woolfenden's wind band scores are widely recognised as appealing and memorable to conductors,

players and audiences alike. With his imaginative orchestration and the wit and pathos of the magical Shakespearean influences, Guy's music is enormously popular all over the world and, once heard, lives within us forever.

Tickets are available from:

Royal Shakespeare Company Box

Office Telephone: 0844 800 1110

Website: www.rsc.org.uk

Prices £10 - £35

Proceeds from the concert will be donated to the Alzheimer's Society

Maths Tuition places
available from September
Experienced Maths Teacher
based in Sibford Ferris available
to tutor pupils in Year 6 and
Secondary School at all levels
including preparation for GCSE,
AS and A2 examinations.
For further information call
Helen on 01295 788 736
or email
helen_earle@hotmail.com

Sibford Gower & Burdrop Annual Spring Clean Saturday, 28th March 2015

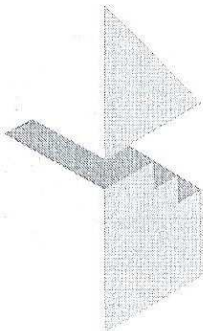
Sibford Gower Parish Council is very grateful to those residents who volunteered their time to help with the clearing of rubbish that had accumulated in Sibford Gower and Burdrop. Also, very much appreciated are those who could not help on the day but had cleared some areas at other times. Thanks go to Cllr Peter Abbott who allocated the areas to receive attention. As is usual, the worst verges were those of the B4035.

The Sibfords War Graves Visits

As people will know by now, a group of villagers from the Sibfords is going to France to visit the graves of the young men from our villages who died there in the first world war. We depart on Sunday 17th May and will begin our journey with a brief service at the war memorial, led by the Rector, followed by a visit to the grave of William Barton who is buried in our own Churchyard. The service will begin promptly at 7 am as we need to board our coach at 7.15 am

We should welcome anyone who would like to join us for the service, and hope many will do so. I'm sorry it has to be so early, but we have a ferry to catch!

Judith Weeks



DAVID BOVILL

ARCHITECTURAL AND PLANNING SERVICES

Providing a personal service from Design through Planning and Building Regulations, and beyond if required

Specialising in Extensions, Loft Extensions and Listed Buildings work

Please phone or e-mail to arrange a free initial consultation

01869 347906

davidbovill@btinternet.com

NEIGHBOURHOOD WATCH

Police Phone No. 101

Crimestoppers No. 0800 555111

May 2015

Trading Standards No. 0845 0510845

Please remember it is up to each of us to ensure that we follow police advice at all times to help discourage all fraudsters.

We have had a warning regarding oil thefts, so make sure your oil tank is secure.

Be very careful answering unwanted phone calls, texts and E-mails. We have been warned that these methods are on the increase. The papers especially the Banbury Guardian and some radio programmes are frequently warnings us about scams. Fraudsters are very clever and are always finding new approaches to catch you unawares or cause you great concern, so remember don't give your personal information.

It takes a very short time for the police to check car registrations etc. so please contact the police on 101 and ask for Banbury Police Station with any concerns regarding suspicious behaviour.



C. A. Berger

Painting & Decorating
Interiors & Exteriors
Residential & Commercial
Carpentry Repairs
and
Property Maintenance

Mobile: 07875 212 315

Office Tel/Fax:
01295 738633

GODSWELL NATURAL THERAPY CENTRE

*Godswell Lodge, Church Street, Bloxham, OX15 4ES
Tel: 01295 722788*


Acupuncture ; Body & Face Therapies ;
Bowen Technique ; Chiroprody/Podiatry ; Cognitive
Behavioural Therapy (CBT) ; Continnence Advice
(for women and men) ; Counselling ; Cranio-Sacral
Therapy ; Homeopathy ; Hypnotherapy ; Lympha-
tic Drainage Massage ; Massage (inc deep tissue, hot
stone and Indian Head) ; McTimoney-Corley Spinal
Therapy; Nutritional Therapy ;

Fully qualified and professional therapists

* See website for further details:-

www.bloxhamsurgerv.co.uk


(follow the link to Godswell NTC)



FARMHOUSE BED AND BREAKFAST GRANGE FARM, SWALCLIFFE

*Enjoy warm hospitality & peaceful
surroundings in our comfortable
18th C Farmhouse*

**CONTACT BARBARA TAYLOR
TEL.01295 780206 or 0771 2895728
WWW.swalcliffegrange.com**



Contributions for the
June
Sibford Scene
to the Editor by
May 19th



Sibford W.I. Meeting - 14th April 2015

This was our AGM. Secretary Lynda Conway gave a full and colourful account of our meetings and events over the past year. President Glennis Hardman followed with her address in which she thanked the Committee for its enthusiasm and unfailing support and the Members for the many tasks that they carry out to ensure the smooth running of Sibford W.I. The Committee for 2015/16 is unchanged. - Glennis Hardman (President), Lynda Conway (Secretary), Rosemary Neil (Treasurer), Mary Hill, Val Powell and Jan Warner. End of year prizes were presented for the most points earned in respect of the monthly competitions. Rosemary Neil came first, Kathleen Winter second and Jan Warner third. Mary Hill, Theresa Tovell and Kathleen Winter ran a busy Bring & Buy stall. Val Powell and Jan Warner served tea and cakes.

During the Meeting, Glennis reported on the O.F.W.I. Annual Council Meeting at Oxford Town Hall on 24th March which she attended with Rosemary. Historian Dr Lucy Worsley gave a fascinating talk. Julie Summers, who has written many books on the history of the W.I. informed the Meeting that there is to be a six part ITV period drama starting in May entitled 'Home Fires' scripted from her book 'Jambusters' about the role of W.I. Ladies during World War 11.

We meet next on Tuesday, 12th May. This is the Resolution Meeting and Lynda will explain the 2015 Resolution 'Failing to Care – Assessment of Need in Long-Term Care' which will be debated at the N.F.W.I. AGM on 4th June at the Albert Hall. At our Meeting there will be a raffle and a competition for a 'Best Flowering Stem from Own Garden'.

Glennis Hardman

LETTERCARVE

.COM

HAND-CARVED HARDWOOD SIGNS FOR THE HOME AND WORKPLACE.
SUITABLE FOR HOUSES, SCHOOLS, ESTATES, FARMS, STABLES, KENNELS, OFFICES.

MADE LOCALLY IN SIBFORD GOWER.

Church Services

Society of Friends
Roman Catholic Mass

Sunday at 10.30 am
Wroxton Sunday at 9.00 am
Brailes Sunday at 11.30 am
Hook Norton Sunday at 10.30 am

Baptist

Holy Trinity Church

May 3rd 10am Benefice Service (HC) at Swalcliffe
6pm Evening Prayer in Sibford

May 7th 7.30pm The Deanery Synod meets in Holy Trinity church

May 10th 8am BCP HC 10am Family Service for Rogation Sunday. Start of Christian Aid Week Please use the RED ENVELOPE coming with your Benefice News, and Return it to The Rectory, or to Church. THANK YOU!

May 17th 7am Brief Service at the War Memorial 9.30am Holy Communion with a special theme for Christian Aid Week
6pm Evening Prayer

May 24th Pentecost Sunday 9.30am Holy Communion

May 31st Trinity Sunday Holy Trinity's Patronal Festival in this its 175th year
9.30am Holy Communion

Book the Date – Saturday July 11th and Sunday July 12th
to celebrate Sibford 175 - 175 years since the church was built

Saturday 11th 6pm a Birthday Party, in the Primary School Hall; cake and fizz for all, children performing, brief "history of the church" EVERYONE WELCOME

Sunday 12th Flowers in church. 11am shared service with the Methodist congregation, 6pm traditional choral Evensong.



RED HORSE VALE LTD

All Types of Fuel, Coal, Smokeless, Gas,
Logs, Kindling, Barbecue Needs
Central Heating Oil, Oil Tanks & Coal Bunkers
Landscape & Building Materials, Garden Centre &
Garden Supplies, Farm & Country Sundries
Equestrian Products, Horse & Pet Feeds
Open: Monday - Saturday 8am - 5pm
Windmill Farm, Banbury Road (A422),
Oxhill, Warwickshire CV35 ORP
Tel: 01926642832
Fax: 01926 642 853 www.redhorsevale.co.uk

PC problems

Get IT sorted

- ◆ Qualified PC technician,
- ◆ Expert advice,
- ◆ Competitive rates,

www.oxoncomputers.co.uk

Get IT sorted

Tel Dan: 01295 788766

Sibford Bus Services

Cherwell Rural Dial-A-Ride Scheme

A mini bus with tail-lift to take **elderly or disabled people** and escort to Banbury (max fare £1.60) Door-to-Door service. Book at least one day in advance. Operates on Wednesdays & Thursdays. Phone 263777 for details.

BCTA also takes bookings for groups of 8 or more on a weekly/monthly basis (Wednesdays & Thursdays) to and from Banbury. Tel; 263777

Stagecoach – Timetable commencing 31st May 2009

Mondays to Saturdays (No services on Sundays or Public Holidays)

Bus 50A. From Banbury towards Stratford-upon-Avon

Banbury, Bus Station	08.30	10.55	12.45	14.26	16.05	17.10	18.10
Sibford Ferris, Cross Roads	08.52	11.17	13.07	14.48	16.27	17.32	18.32
Sibford Gower, School	08.55	11.20	13.10	14.51	16.30	17.35	18.35
Shipston,	09.15	11.40	13.35	15.11	16.50	17.55	18.55
Stratford on Avon, Wood St.	09.40	12.09	14.04	15.40	17.19	18.24	19.24

Bus 50A. From Stratford-upon-Avon towards Banbury

	NS					Sch Hols	Term time	
S on A, Wood St	06.20	07.10	09.05	11.10	13.10	15.10	15.24	16.24
S G, School	07.04	07.55	09.56	11.56	13.56	15.56	16.10	17.14
S F, Cross Roads	07.07	07.58	09.59	11.59	13.59	15.59	16.13	17.17
Ban, Bus Station	07.28	08.25	10.21	12.21	14.21	16.21	16.35	17.39

NS = Not Saturdays

All buses will operate low floor wheelchair accessible vehicles.

For complete details of all the stops that are served by service 50A, timetables are obtainable from the Tourist Information Centre in Castle Quay, Banbury.

Fares:-

Sibford Ferris & Sibford Gower to Banbury: Single £2.80 (Child£1.25)

Return £5.25 (Child £2.35)

Sibford Ferris & Sibford Gower to Stratford: Single £4.30 (Child £2.85)

Return £6.30 (Child £4.20)

Unlimited travel Cards are available for 1, 7 or 28 days but are regional and need to be bought in advance. Contact the Stagecoach sales office in Stratford tel; 01789 412680 for more details.

Calendar of Events

May

- Sun 3 & Mon 4 Meeting House grounds closure p16
Mon 4th Sibfords Walking Group 10am Village Hall p6
Tue 5th Friendship Club AGM p4
Tue 5th Ferris Parish Council Meeting
Wed 6th Mobile Library in the Sibfords (2.40-4.10pm)
Wed 6th Cafe Scientifique at Sibford School p12
Tue 12th W.I. Resolutions Meeting p21
Wed 13th Horticultural Society Show Entry Night 6.30 - 7.30pm p9
Wed 13th Horticultural Society - Irish Gardens 8.00 p9
Sat 16th Horticultural Society Spring Show 2.30 - 4pm Village Hall p9
Mon 18th Sibfords Walking Group 10am Village Hall p6
Tue 19th Friendship Club - Cotswold Wildlife Park trip p4
Wed 20th Mobile Library in the Sibfords (2.40-4.10pm)
Thu 21st Sibfords Society - Glous & Warks Railway 8pm p14
Sun 24th Celebration Concert at Stratford 3pm p18
Thu 28th Village Hall Film Night - The Theory of Everything 7pm p10

June (part)

- Wed 3rd Mobile Library in the Sibfords (2.40-4.10pm)
Sat 6th Village Hall Dog Show 1.30 pm p10
Mon 8th Sibfords Walking Group 10am Village Hall p6
Wed 17th Mobile Library in the Sibfords (2.40-4.10pm)
Thu 18th "The Tempest" at Holly House (see flyer) p12
Mon 22nd Sibfords Walking Group 10am Village Hall p6
Thu 25th Village Hall Film Night p10
Sat 27th "Damn Right I Got The Blues" at the Village Hall 7pm p10

Cover picture; Drilling at Brakelands Farm 1950's style.

Sibford Scene

Editor; of this edition Adrian Lamb

New Editor; Caroline Seely, Home Farm, Sibford Gower OX15 5RS

Email sibford.scene@btinternet.com

Advertising; Ivor Hopkyns, Elmridge Farmhouse, Sibford Gower,

Banbury, Oxon. OX15 5RT. Tel 788367

e-mail sallyandivorhopkyns@hotmail.com