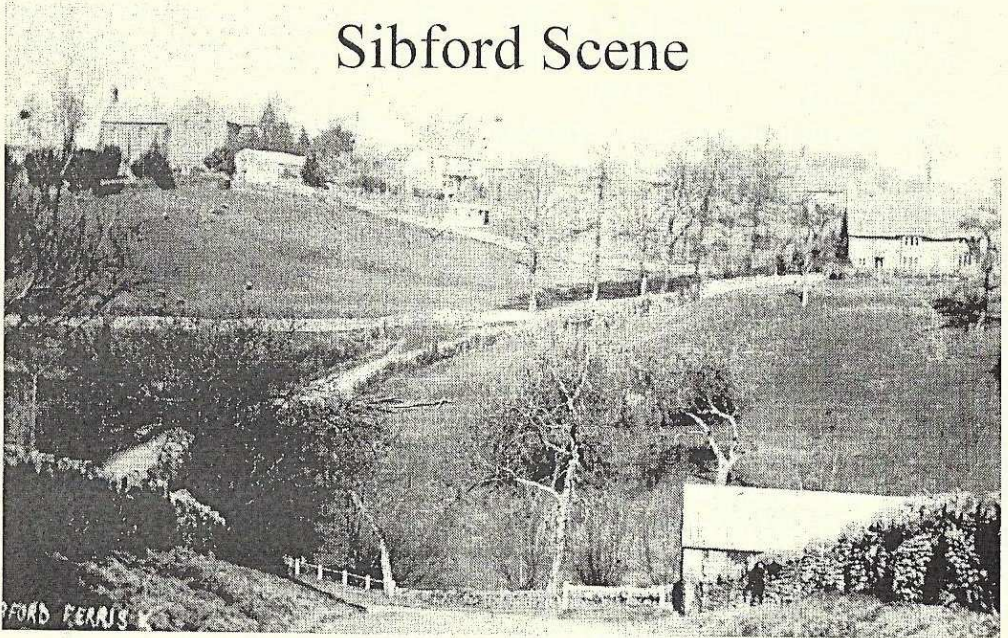


# Sibford Scene



March 2015

No. 370

## Primary School Art Exhibition

Saturday 7th and Sunday 8th March 10.30am - 4.30pm

### “CARE FOR A CUPPA”

Coffee Morning in aid of Katharine House Hospice

Saturday March 7th At The Leys, Backside Lane, S Gower 10-12noon

## Sibford Cricket Club AGM

Sunday 15th March 6.30pm Wykham Arms

### Village Hall Film Night

Thursday 26th March. Doors Open at 7.00pm

“Mr Turner”

## Parish Spring Clean

Saturday 28th March 10am

Please meet at the Village Hall or Lanes End Corner

## Nature Notes

Jan 29th A friend of ours saw 2 crows trying to see off a red kite over the school playing field. After a brief tussle she saw some feathers floating down but they got caught up in a tree and she could not be sure whether they were from the crows or the red kite.

Feb 3rd Six hen pheasants spent some time walking around on the top of our clipped yew hedge which is about 12 feet high. They look big up there.

Feb 6th Although badgers visit our garden pretty well every night we rarely see one. However I looked out at 3.30 this morning and, in the bright moonlight saw one cross the lawn. It looked to be heading for the well worn path through the trees which I think takes them back across the valley to Wheathills.

Feb 9th I was surprised to see a very smart looking fox trotting round our garden in the middle of the day and in bright sunshine. It showed some interest in an area where pheasants often collect.

Feb 18th I managed to get a close up view of a cock bullfinch that has a bad leg. It has a growth on its foot which looks similar to the one on the foot of the chaffinch that I mentioned last month. They both seem to be well otherwise and come to feed frequently from the tops of our wheelie bin. I have cleaned the wheelie bin lids incase it is infectious.

Feb 19th I did not get a close look but I thought I could see a growth on the foot of a blackbird. I hope that it only had something stuck to it.

### HOLMBY HOUSE

#### SIBFORD FERRIS

A stunning setting for special celebrations

*From Buffets to Gourmet Dinners*

Formal dining for large groups

Garden parties Business meetings

Wedding receptions

Luxurious B & B

Self-catering accommodation

Tel/Fax:01295 780104

[www.holmbyhouse.com](http://www.holmbyhouse.com)

[Sally.wass@btinternet.com](mailto:Sally.wass@btinternet.com)



BESPOKE DESIGN SERVICE FOR  
CUSTOM MADE FURNISHINGS

**Curtains, Blinds & Cushions**

**Loose covers**

**Headboards & bedspreads**

**Curtain poles & tracks**

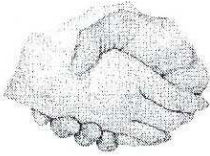
**New Sofas & chairs & reupholstery**

**Lampshade making**

01295 788145

[info@annwoolgrove.com](mailto:info@annwoolgrove.com)

[www.annwoolgrove.com](http://www.annwoolgrove.com)



## Friendship Club

The Friendship Club welcome home again Robin and Ann Spicer from Thailand and hope to see them at our Meetings while they are here.

On March 3rd we are having a speaker from Dogs for the Disabled and a Friend called Libby.

The Trip on March 17th is to Slimbridge leaving Sibford about 10 am.. Price for non members £20-00, anyone wishing to join us please ring Eveline on 263460

---

## Annual Spring Clean – Sibford Gower & Burdrop

Saturday, 28<sup>th</sup> March 2015

The Annual Spring Clean will take place on Saturday, 28<sup>th</sup> March 2015 and volunteers are sought to give an hour or so of their time to help with the work of clearing litter from where it may have gathered in Burdrop and Sibford Gower. We will meet at Sibford Village Hall at 10am when Peter Abbott will allocate the areas which require attention.

Clear recycling sacks (for paper, cardboard, plastic bottles and cans) and rubbish sacks (for other items) will be provided together with cotton gloves. The District Council supplies on loan only a minimal number of

litter pickers and high visibility jackets so if you are able to bring along your own it will be extremely helpful. Should anyone be willing to help but

not be available on 28<sup>th</sup> March, please phone Peter Abbott (Tel: 780731) and he will discuss with you a particular area that would benefit from your attention on another day.

The Members of Sibford Gower Parish Council hope that the occasion will once again receive the usual enthusiastic support and look forward to seeing you on Saturday, 28<sup>th</sup> March. Sibford Gower Parish Council

### PILATES IN SIBFORD

Madeleine Wilson M. Sc, Mat &  
Studio Master Teacher  
Offers

Bespoke One to One  
and Duet sessions

Training on Specialised Pilates  
Equipment

Reformers, Chairs, Barrels  
& Cadillac & Small Group  
Matwork Classes

For all Levels from Beginners to  
Advanced

Tel: 01295 780279

Mob: 07905 953300

E:mwl@linuxwaves.com

www.pilatesinsibford.co.uk

**“CARE FOR A CUPPA”**  
Coffee Morning in aid of Katharine House Hospice  
On Saturday March 7th  
At The Leys, Backside Lane, Sibford Gower  
Raffle - Bring and Buy - Cakes  
10am - 12 noon  
Free Admission

**Victoria Smith**  
**MASSAGE THERAPIST**  
**@ Serenity, Sibford Gower**  
*"Life takes it out of you, but  
Massage puts it back"*  
**07974 231571**

**LOGS, HAY,  
STRAW**  
Garden Manure  
Antony Sabin  
01295788421

**Sibford Stores & Post Office, Sibford Ferris**

OX15 5RG

Telephone 01295 788317 / 788348

**YOUR LOCAL CONVENIENCE STORE AND NEWSAGENT**

We deliver newspapers and magazines 7 days a week to all the surrounding area. Place your regular order today, whether for 1 day a week or 7. Always a wide selection of magazines available, specialist titles available to order.

Chilled & Frozen foods, groceries, cigarettes, beers, wines and spirits, fresh fruit and vegetables, pet foods, household goods, toiletries & medical requisites and lots, lots more.....

Health Lottery, Photocopying, fax service, dry cleaning

We will also undertake your mailings for you, just ask.

Always an excellent selection of Hook Norton bottled beers in stock.

Telephone your grocery order for free local delivery.

**OPENING HOURS**

Monday to Saturday 7.30am to 7.30pm

Sunday 7.30am to 4.00pm

**PLEASE SUPPORT YOUR LOCAL POST OFFICE, THERE ARE LOTS OF  
PRODUCTS AND SERVICES AVAILABLE ON YOUR DOORSTEP**

## Christmas Charity Funday football match raises nearly £300.

Soon after eleven o'clock on Saturday 27<sup>th</sup> December saw the kick-off of the Annual Christmas Fund raising event between an All-stars Swalcliffe and Sibford sides that took place at Swalcliffe Park School. A combined total of twenty seven men and young men braved the cold dressed in a massive variety of fancy dresses in order to participate in the Annual Fun day Charity Football event. There was joy on the faces of most of the players when it was disclosed that the referees whistle would be blown by Dr Spackman and Mark Austin standing in for the "one man judge and Jury" Referee Mick Foley. The Swalcliffe side got off to a flying start and were two goals up within the first fifteen minutes. It was end to end action throughout the rest of the game as Sibford fought back and were in the in lead at 5-4.

However, with only a minute to go before the Final whistle Referee Mark Austin awarded Swalcliffe a penalty which Ross Gilkes dispatched into the back of the net to level the score to 5-5. Team Fines and awards were duly despatched at the after match lunch that took place at the Stags Head Swalcliffe.

**Sony Bravia 40" LCD  
Digital Colour TV  
Freeview included. VGC  
£100 ONO.**

**If interested, please tele-  
phone 01295 788246.**

Just under three hundred pounds was raised for four Charities namely Katherine House, Frank Wise School, Shipston Home Nursing and Swalcliffe Park School. Special thanks to Swalcliffe Park School and support Staff, the touchline supporters, The Stags Head pub, Dr David Spackman, Phil and Aileen for the Prizes.



# The Firs Garage

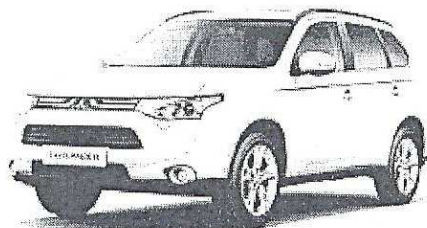
[www.firs-garage.com](http://www.firs-garage.com)

Family business established 1960



Tel: 01608 737349 / 737641

Hook Norton, OX15 5DD



All-new Mitsubishi Outlander 4x4

Extensive range of new  
and used cars & 4x4's:  
petrol, diesel & electric

Part exchange welcome

Service  
MOT Parts  
Bodyshop  
Fuel Shop

**ALL MAKES  
SERVICING  
COMPETITIVE PRICES**

*We look forward to seeing you, the kettle is on!*

## Sibfords Walking Group

### Forthcoming Walks

9 March, 23 March, 13 April, 20 April, 4 May

Departure from the Village Hall car park at 10am sharp for a circular walk of approximately 2 hours. We recommend boots and walking poles but they are not compulsory. Dogs are welcome provided they are put on a lead when requested. Please contact Sue Bannister on

sebannister@gmail.com or  
01295 780365 for any clarification.

All welcome!

## YOGA

Sibford Village Hall

Tuesdays 9.00-10.00am

Fridays 9.00-10.00am

(beginners welcome)

Any enquiries to:

Juliette – 07703 836 856

[Juliette53@btinternet.com](mailto:Juliette53@btinternet.com)

## LOGS



TOP QUALITY, SPLIT,  
SEASONED, HARDWOOD LOGS  
STACKING SERVICE AVAILABLE

**DAVID RANDALL**

01608 738109 or 07581 205451

E:MAIL [katylou63@sky.com](mailto:katylou63@sky.com)

- Bespoke bathrooms, kitchens and carpentry
- Fitted furniture
- Plumbing and electrical works
- Home improvements and renovations

# Hugo Seely

Trading in the Sibfords since 1992

From concept to completion

*Exceptional value,  
exceptional service*

T: 01295 780355

or 07773 319239

E: [hugo.seely@gmail.com](mailto:hugo.seely@gmail.com)

*Excellent references*

## VILLAGE HALL NEWS

FILM NIGHTS On Thursday March 26th we will show "Mr Turner" a fascinating story of the great painter starring Timothy Spall in the lead role. On Thursday April 23rd we will show "The Imitation Game". The film tells about Code Breaking and stars Benedict Cumberbatch. All films start at 7-30pm in the large hall .Doors open at 7pm. Hot and cold drinks available and you are welcome to bring your own wine . Entry £2 for adults, £1 for students/children.

### FORTHCOMING EVENTS

EASTER EGG TRAIL will be on Good Friday April 3rd starting from 2pm. Entry is £2-50 per child. For more details see [thesibfords.org](http://thesibfords.org)

DOG SHOW This is planned for June 6th 2015.

DAMN RIGHT I GOT THE BLUES are playing at the hall on June 27th. Make sure you put the date in your diary as you would not want to miss your favoutite band!

VILLAGE FAYRE will be in Setember this year on 26th.

HALL BOOKINGS Contact Ginny on 01295 780373 or via [thesibfords.org](http://thesibfords.org)

VILLAGE HALL CAR PARK this is getting a lot of use at the moment, particularly at certain times of day. Please may we request that people park considerately. The grass is fenced off at present to allow it to grow a bit. Later this year it will have some protective matting on it. Please do not park on the Yellow hatched area as this is for emergency access to the rear of the hall. Do take any litter home with you, or feel free to use the bins at the side of the hall.

Note from Muriel - a big THANK YOU to everyone who joined in the VH Lottery Game and waited patiently for the game to start. We raised £912 for the VH Refurbishment Fund and £912 went into the

Sibford Farming Club  
Visit to the Olympic Park

sometime in May

Please come and join us for a  
fascinating and enjoyable trip  
If interested please contact Sue

Tompkins on 780541

game's prize fund. The January prizes went to 1st Mrs J Allen, 2nd Mr T Pratt, 3rd Mr H Seeley ad 4th Mrs Godman. There will be 4 prizes given every month for the rest of this year. Good luck.

## SIBFORD CRICKET CLUB

The club's AGM will take place on

Sunday 15th of March at 6.30 at the Wykham Arms.

Any existing or prospective members will be welcome to join us.

Last season the club found itself short of players on a number of occasions, and as such we hope that any casual cricketers who might feel able to offer their services on occasion but who unable to offer a regular commitment may feel we are the club for them and we would look forward to seeing you at the AGM.

If you are unable to attend on the 15th feel free to join us at nets indoor at Sibford School on Tuesday 31st March & Tuesday 7th April 6.00 - 7.00pm and outside at Bloxham School on Tuesdays 14th, 21st & 28th of April from 6.00pm.

---

Sibford Ferris Parish Council

### Annual Spring Clean

Saturday 28th March. 10 am from Lanes End Corner

Lanes End Corner is the cross roads in the middle of the Ferris where the bus stops, where we will gather to allocate areas to the many volunteers we would like to see join us for a mass parish tidy up.

Bags will be provided and I have some gloves available.

If you are willing to help but are unable to join us on the 28th please contact Adrian Lamb (780380 [adrian.lamb1@btconnect.com](mailto:adrian.lamb1@btconnect.com)) and an area can be set aside for you.

### Jennifer Wealsby- Art and Design

Tutor of drawing and painting classes since 1988

Mondays 10-12am Sibford Village Hall , Small Hall. - Pastels

Fridays 1-3pm Sibford Village Hall- Drawing and watercolour

also

Wednesdays 9.30-11.30am at Churchill Village Hall

Wednesdays 1-3pm Spelsbury Memorial Hall

Fridays 9.30-11.30am Holly Tree Deddington

(All Drawing and watercolour classes)

To register your interest in these any of these classes or find out more details you can ring me on 01608 730401 Or email [jgw4art@gmail.com](mailto:jgw4art@gmail.com)



## NEIGHBOURHOOD WATCH

Police Phone No. 101

Crimestoppers No. 0800 555111

March 2015

Trading Standards No. 0845 0510845

Please remain aware, observant and report anything suspicious including callers, phone calls and the computer.

Fraudsters are very clever, convincing and are up to every trick. The radio, daily and local newspapers inform us about scams where people have been taken in, they have given out their personal details and lost money. Remember the police and the banks will never phone or visit you to ask for your bank details. Be very careful using the computer it is also a wonderful opportunity for the fraudster; make sure you have memorable and unique passwords.

Catalytic converters have been removed from vehicles, 4x4's, pick-up trucks and vans, in the Banbury Rural Area. If you need advice phone 101 and ask for Michelle Miller at Banbury Police Station. Make sure you always lock your vehicle you never leave any valuables in view and if possible remove them.

For Practical Garden Assistance

Please contact Nick Taylor

07425136992

johnnicktaylor31@gmail.com

01295 680206

01295 788397

All types of garden  
work undertaken

### Micks Sticks

Fire Lighting Wood For Sale

£3.00 per big bag

Call in anytime and ask for

Mick Canning, at

The Old Malt House,

Sibford Ferris

Tel; 01295 780321



## OPUS Property Services Ltd

01295 780652

07816592124

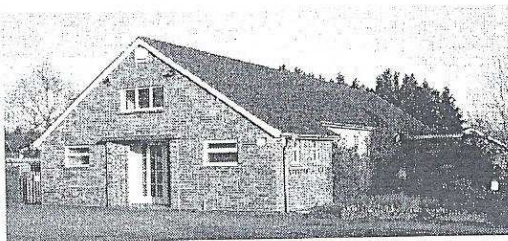
All aspects of property maintenance and refurbishment undertaken from replacement light bulbs and tap washers to new ceilings and floors.

Plumbing, tiling, wood flooring, floor renovation, under floor heating, plastering, electrics, decorating, damp proofing, carpentry, locks, drains, kitchens, bathrooms etc

Call us or visit our website for  
more information:  
[www.opusps.co.uk](http://www.opusps.co.uk)

## SIBFORD VILLAGE HALL TWO MAJOR CHANGES

When the village hall was built in 1957 it was constructed with a cedar shingle roof with a life span of 30 years. The roof was renewed



in the late 1980's. The Village Hall Management Committee has agreed that it would be prudent to plan financially for the renewal of the roof in the next few years. It was agreed at a recent Management Meeting that profits raised from village hall functions, Dog Show, Fayre, Film Nights etc. should in future be reserved for replacing the hall roof and not be used as a general subsidy to hire rates. The hall currently costs £10.45 an hour to run. This means that apart from when both halls are hired, which accounts for less than 6% use, the village hall currently runs at an operating loss of between £0.45 and £4.45 for every hour the hall is used. It was felt that it would be impractical to try and fund the running of the hall out of rental income in one step but it was agreed that this should be the objective over the next two years. Rates to village organisations will increase to £8.25 an hour with effect from 1st April 2015. Current bookings will be honoured at the current rate. Other rates will be published on the website.

The second change is that, after 24 years, Muriel Chandler will retire as secretary/caretaker at the end of this year. Efforts to find a replacement volunteer have failed dismally. This means that a paid caretaker will have to be employed. The cost will be reflected in any further rent increases after 1st January 2016.

Commercial hire of the village hall has increased by 44% in the

Holiday Let  
For 1 or 2 people  
In quiet, self-contained  
annexe  
Contact Judy Abbott  
01295 780731

### BOXERSIZE and METAFIT FITNESS SESSION

Sibford Village Hall

Every Monday at 7pm from Feb 16th  
Non contact, Great cardio burn, Strength  
training, confidence boost, Stress relief  
Men and women welcome  
all ages and abilities.

For booking or further information  
contact Lorraine on 07802537100  
willaminas@outlook.com

past two years. This has made up for a slight drop in village use and has helped keep hire costs competitive with other halls in the area. The Management Committee will continue the planned refurbishment programme although some major works may have to be put on hold in the short term.

The good news for users of the hall is that the replacement and draught proofing of the main village hall doors will continued as planned in the middle of March.

*Sibford Village Hall Management Committee*

---

## St. Patricks Night

Friday 13th March 7.30pm onwards

Swalcliffe Village Hall

Irish Themed menu, Traditional music from 16 strings and a dead goat

Guinness and Black Velvet cocktail available at the bar

Tickets £15 in advance - contact Kate Foley 01295 788223

[katefoley1@hotmail.com](mailto:katefoley1@hotmail.com)

Proceeds to Swalcliffe Village Hall

### Serenity Beauty Salon

Gautherns Barn, Sibford Gower

Open Tuesday to Saturday 9am-4pm

Plus late night Wednesday's

Specialists in Environ and Guinot

Facials and Skincare

OPI Manicure and Pedicures

Waxing, Massage, Lash Tinting

and Removal of Skin Blemishes

Stockist of Jane Iredale

Mineral Make-Up

Contact Jo direct by email on

[joplum22@yahoo.com](mailto:joplum22@yahoo.com).

text 07891 220275 or leave a message

on 01295 788463

£5 off a treatment with Jo with this ad!

Holiday apartment overlooking  
Lake Trasimeno, Umbria, Italy.

Self contained ground floor apartment; open plan lounge/ kitchen /diner, 2 bedrooms, 2 bathrooms, shared use of private garden/pool, panoramic lake views, close to bars, restaurants, shops and lake ferry. See us on

[www.ownersdirect.co.uk](http://www.ownersdirect.co.uk)  
property ref IT12664

Or for further details, please  
contact local residents:-  
[linckchick@gmail.com](mailto:linckchick@gmail.com)

## STUDENTS WARN OF PITFALLS OF SOCIAL NETWORKING

GCSE drama students at Sibford School combined coursework with community action when they devised an original play warning of the pitfalls young people face with social networking.

As part of their GCSE studies, the Year 10 pupils produced an original script, titled *'Social Media ... The Minefield'*, in which a newcomer to a chat room becomes a victim of cyber bullying.

Said Head of Drama, Neil Madden: "The students wanted to raise awareness of the dangers that young people face when using social networks so, as well as performing the piece as part of their controlled assessment, they also staged a special performance for fellow pupils who, having watched the play, were left with the clear message that, when using social media, you have to be very careful where you tread."

### HATS THE WAY TO DO IT!



Junior pupils Alex Wintle, Georgie Baxter, Archie Bothwell, Amelia Hadley and William Whalley.

Sibford pupils donned their hats and raised more than £345 to help the homeless.

The school took part in Woolly Hat Day in support of St Mungo's Broadway ... with pupils paying for the privilege of keeping their hats on.

Pictured in their hats are Senior pupils Scarlett Fowler, Charlotte Harries-Harris, Emma Mortimer, Alex Thompson and Meghan Robinson.



- Projects operated by St Mungo's include the West Oxfordshire Single Homeless Pathway, a semi-independent housing scheme based in Chipping Norton, Witney and Carterton.

### OPEN MORNING

The next Open Morning at Sibford School will take place on Friday 6 March starting at 9.45am. Further information can be found on the school website ([www.sibfordschool.co.uk](http://www.sibfordschool.co.uk)) or from the school's admissions officer, Elspeth Gregory on 01295 781203.

## SWIMATHON

Sibford School is urging swimmers to take the plunge and compete in the UK's biggest charity swimming event. The school's 25m indoor pool will be hosting Swimathon 2015 in aid of Marie Curie Cancer Care, and with entries now open, pool manager Angie Wiffen is hoping that swimmers of all ages will sign up to take part. "Swimathon is fantastic as it brings people together raising money for charity and, at the same time, provides them with a great way of keeping fit," said Angie. Individuals can choose to swim 1.5km, 2.5km or 5km while teams can opt for the 1.5km or 5km challenge.

Sibford pool will be open for the Swimathon Challenge on Saturday 18 April (from 4.30pm ~ 7.30pm) and Sunday 19 April (from 3pm ~ 7pm). To register for Swimathon 2015 at Sibford pool visit [www.sibfordschool.co.uk](http://www.sibfordschool.co.uk)

## CAFÉ SCIENTIFIQUE

Thomas Charlesworth, who has recently completed a PhD at the Medical Research Council, Cambridge, will be guest speaker at the next Sibford Café Scientifique which takes place on Wednesday 11 March. Doors open at 6.30pm. All welcome.

## EASTER FUN IN THE COUNTRY

Sibford School's popular Fun in the Country holiday club will be operating over the Easter holidays from Monday 30 March – Thursday 2 April and Tuesday 7 April – Friday 10 April. Children can enjoy a range of activities including swimming, crafts, sports and cooking. Cost is £28 per child per day. To book a place call Elspeth Gregory on Banbury 781203 or email: [funinthecountry@sibfordschool.co.uk](mailto:funinthecountry@sibfordschool.co.uk). Pre-booking is essential.

Damian and Debbie

Welcome you to enjoy the atmosphere of our 16<sup>th</sup> century thatched Inn.

- Bar and a la carte menus available lunch & dinner.
- Excellent Sunday lunch - to suit the weather!
- New food and wine takeaway menu.
- Wednesday steak and wine night £15.00
- Selection of fine wines and real cask ales.
- Happy hour and a half every Wednesday evening!
- Gift vouchers available.

THE  
WYKHAM  
ARMS

Temple Mill Road  
Sibford Gower  
Nr. Banbury  
OX15 5RX

Tel: 01295 788808 / 07

Take a look at our new website  
[www.wyksamarms.co.uk](http://www.wyksamarms.co.uk)

email:  
[info@wyksamarms.co.uk](mailto:info@wyksamarms.co.uk)

Opening Times  
12.00am-3.00pm  
6.00pm-11.30pm

Bar only Sunday Night  
Closed all day Monday  
(Except bank holidays)

*The*  
**S**ibfords  
*Society*

The Sibfords Society Social Evening was held on 19<sup>th</sup> February in the village hall, which was beautifully decorated by Sally Hopkyns and Marianne Allen. As with every year, the scrumptious bring and share supper appeared as if by magic on the tables in the small hall, and a glass of mulled wine prepared by Keith and Maureen Hicks started the evening in style. After a demanding but fun quiz featuring historical photos of the Sibfords, compiled by Tony Haynes, we enjoyed the meal, and after this the entertainment was kindly provided by David Allen, who took us down memory lane with some of the hits of the past decades, plenty of firm favourites and lovely to hear again, aided (or hindered!) briefly, by myself.

Peter Hardman rounded off the evening with some favourite piano pieces for an audience sing-along. Many thanks to them and to all the committee members who worked so hard to make the event a pleasure and also to society members who rallied round and helped with the clearing up at the end. Thanks too to Glennis Hardman for the use of the WI tablecloths and for her lovely floral centrepiece.

Sadly, we had to say goodbye to Richard Hartree, who has been a member for many years, and contributed a great deal to the society. He will soon be leaving Sibford after living here since 1992 and we wish him all the very best in his new home.

The next meeting of the Sibfords Society will be the AGM on 19<sup>th</sup> March, which will be followed by a film 'Swift Stories' presented by Chris Mason. Please note that the meeting will be in the small hall on this occasion. Doors open 7.45p.m. for an 8 p.m. start.

We have a pair of glasses left after the social. If you would like to be reunited with them please ring 780248

Richard Wallington  
Builder

Block Paver Drives a Speciality  
Also Extensions, Patios  
Fencing etc.

High Quality Work, Free Estimates

01295 780705 07743 932545  
(Sibford Gower) (Mobile)

**Bed & Breakfast**

**AGDON FARM**

**Nr Brailes**

**Comfortable rooms  
in old stone farmhouse**

**Tel: Maggie Cripps**

**01608 685226**



## CHAMBER CHOIR

Musical Director Vivienne Bellos

Accompanist Andrew Gellert

“A brief tour of Jewish choral music  
from early times to the present day”

Saturday 18th April 6.00pm in Swalcliffe Church

This highly acclaimed choir from the North Western Reform  
Synagogue, Alyth Gardens in Golder Green, London has performed  
concerts in Germany, Brussels and London

\*\*\*\*\*

There will be a free drink on arrival and donations on retiring will be  
in aid of Katharine House Hospice.

For further information please phone Gay on 01295 788427  
or Ronald on 01295 780555

### Hawthorn livery

Hawthorn stud  
South Newington  
Ox15 4JP

We offer Full, Part & D.I.Y  
Secure tack room & CCTV  
50 x 50 flood lit ménage with  
show jumping equipment  
Drink making & toilet facilities  
4 Large paddocks  
Places now available  
Call in for a chat  
or phone for more details  
01608 683911 or 07798764580

For Sale in Swalcliffe  
Smeg two oven electric  
cooker with gas hob.  
70cms wide. V.G.C.

£100 ono

Buyer collects  
Call Linda on  
07973 326032

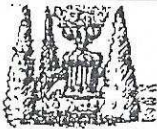
### THE VILLAGE SHOP HOOK NORTON

#### \*NATIONAL LOTTERY\*

Grocery - Greengrocery - Bakery  
Wines - Spirits - Confectionary  
Newspapers - Magazines  
Cards - Bottled Gas  
Open Monday to Friday  
8 am to 8 pm  
Saturday 8 am to 8 pm  
Sunday 8 am to 6 pm  
Telephone: 01608 737245

## WELCOME TO SIBFORD

If you are a new resident of Sibford or have new neighbours who have not yet received a copy of the "Welcome to Sibford" booklet, please telephone Ivor Hopkyns on 788367 (Gower or Burdrop) or Nic Durrant on 788865 (Ferris), and a copy will be delivered to you. The information will help to make you feel at home - by acquainting you with the services, schools, clubs and societies that are currently active in the villages.



### BED AND BREAKFAST

Buttslade House, Sibford Gower offers supremely comfortable en suite accommodation in the charming setting of a tranquil English country garden.

Contact Diana Thompson  
01295 788818

Or [diana@buttsladehouse.co.uk](mailto:diana@buttsladehouse.co.uk)  
[www.buttsladehouse.co.uk](http://www.buttsladehouse.co.uk)



### Sibford Horticultural Society

Our 2015 programme starts on Wednesday 11th March with Harriet Rycroft coming to talk to us on "Exciting Plants for Pots". We meet at 8.00 pm in the Small Hall at the Village Hall. All are very welcome.

### Miss 'T' Catering.

**Catering for events such as:**

**Anniversaries, Weddings,  
Christenings, Birthday parties,  
Funerals**

**And private dinner parties.**

~.~.~

**Also available**

**Cutlery and Crockery Hire.**

**Contact Victoria Taylor on:**

**Mob: 07841 910037**

**Home: 01295 788924**



**QUALITY FISH  
DIRECT FROM  
GRIMSBY MARKET**

Proprietor: T.P.Martin

Tel: 07871 879197

**Best fresh fish and shell fish to your  
area direct from Grimsby on the  
Lincolnshire coast**

**I'll be at Sibford Village Hall car park**

**EVERY MONDAY from**

**approximately 4pm till 5.30pm**



## WOULD YOU LIKE TO KEEP BEES?

A lot of people keep bees because they produce honey, one of the healthiest and most natural foods and one which has been valued by man since prehistory as a sweetener. Others keep bees because they are interested in the study of bees and of their habits; bees are fascinating creatures and there is always something new to learn about them. With no means of dealing with the ubiquitous varroa mite that is now present in all UK honey bee colonies, a feral honey bee nest is unlikely to remain viable for more than a couple of seasons; it is only managed colonies that can survive to carry out the essential pollination our food crops. Beekeeping is an enjoyable open air hobby bringing you in contact with people from all walks of life. Bees can be kept by almost everyone except a very small minority who are allergic to bee stings.

Shipston Beekeepers are holding an "Introduction to Beekeeping" day on Saturday 14th March at Stretton-on-Fosse Village Hall, GL56 9QX. The day will deal with the basics of beekeeping for the complete beginner or those with very limited experience of this craft. Arrive at 09.30 for coffee prior to a prompt 10.00 start. Refreshments, a light lunch and a practical beekeeping reference manual are included in the day's price of £40. The event is scheduled to finish at 15.30 approx. Contact Douglas Nethercleft on 07850 352905 or [djn0001@aol.com](mailto:djn0001@aol.com) to book your place. Numbers are limited.

## Colour Analysis by Annie Broe

I will show you which colours are best for you.

Wearing the right colours is an easy and effective way to enhance your appearance.

You will instantly look more radiant, younger and healthier

You will feel more confident

Colours are very powerful – use this power to your advantage and look fantastic!

Gift Vouchers available – the perfect Mother's Day present

For a personal colour analysis or for more details please call me on

01295 780637 or 07930 398151 or email  
[annie4colourandstyle@gmail.com](mailto:annie4colourandstyle@gmail.com)



## Sibfords Society Programme 2015

19<sup>th</sup> March : AGM (in small hall), followed by 'Swift Stories', a showing of the film on what local people in Oxon are doing to preserve our swifts. Presented by Chris Mason.

16<sup>th</sup> April : David Beaumont – a talk on 'Edge Hill and Beyond'.

21<sup>st</sup> May: Philip Jarvis – an illustrated talk on the Gloucester and Warwick Railway.

18<sup>th</sup> June: A steam train round trip with the GWR to Cheltenham.

16<sup>th</sup> July: Evening visit to Radway to see a brand new exhibition in the church on 'The Battle of Edge Hill.' Afterwards at The Castle at Edge Hill.

17<sup>th</sup> September 'The Water Gypsy' – talk and book signing on how an 18<sup>th</sup> Century Oxfordshire fishergirl became a viscountess. Julie Ann Godson.

15<sup>th</sup> October- talk by Maureen Hicks on 'The Sibfords 1914-1918'

19<sup>th</sup> November: Dr Richard Buckley from the Dept. of Archaeology, Leicester University– talk on Richard III - 'The King under the Car Park'.

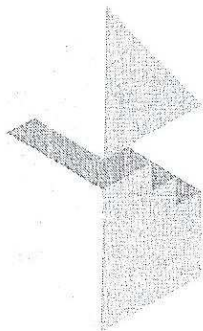
### Sibfords to Vienna

What do you think of the idea of a group from the Sibfords going to Vienna, probably in autumn 2015? I love Vienna for its music, its architecture, its history, its galleries and parks, to name a few things, and we go there a lot because my daughter lives there. I thought it would be fun to have a three-day trip to the city, to take in all of the above mentioned treats.

The approximate price of a direct flight is £250 and 3 nights in a 3 star hotel in the centre cost approx £329 for a double room.

If you would like to consider forming part of a group bound for Vienna please get in touch.

Diana Hughes: 01295 780506



**DAVID BOVILL**

ARCHITECTURAL AND PLANNING SERVICES

Providing a personal service from Design through Planning and Building Regulations, and beyond if required

Specialising in Extensions, Loft Extensions and Listed Buildings work

Please phone or e-mail to arrange a free initial consultation

01869 347906

davidbovill@btinternet.com

## Farewell to the Sibfords.

I moved into Stables Cottage in the Ferris in June 1992 following a 40 year career with Alcan which ended in Vancouver, Canada. In the 1960s and 70s I had worked in Banbury, had come to like the area and chose to return in retirement.

I've had a good life in the Ferris. My children and their families have always been happy to visit. Many of my activities have been beyond the villages – playing the horn in orchestras in Banbury and Stratford, going to the RSC and to concerts in Birmingham's Symphony Hall. Sibford is a convenient base for many activities when you don't mind driving.

In 2000 I volunteered to help with the Millennium Pageant and found myself playing the role of TIME. It was hard work but very enjoyable. In 2008 the idea of a Sibfords Community Plan was promoted. I volunteered again and found myself in the position of Chairman of the Steering Group – a role that suited my professional experience. We produced the Plan and in 2014 made a review of it which showed that several of the proposals had been implemented.

In March I shall be moving to a retirement flat in Cheltenham.

Thank you, Sibfords, for the opportunities.

I have many things which neither I, nor my family will have use for:- garden, garage and DIY tools, a MotherCare folding cot, various small items of furniture. Give me a call on 780335 and we can fix for you to have a look. Proceeds will be donated to charity. Richard Hartree

Maths Tuition places  
available from September  
Experienced Maths Teacher  
based in Sibford Ferris available  
to tutor pupils in Year 6 and  
Secondary School at all levels  
including preparation for GCSE,  
AS and A2 examinations.  
For further information call  
Helen on 01295 788 736  
or email  
helen\_earle@hotmail.com

INDULGE IN LUXURY SKIN CARE  
TREATMENTS IN THE COMFORT  
OF YOUR OWN HOME.

Tropic Skincare is a cruelty- free,  
Vegan, and 100% natural and proudly  
British Skincare Company.  
Hold a Tropic Pamper experience and as  
the hostess you will be lavished with  
luxury treatments. You will get a FREE  
spa Facial from our Senior  
Ambassador Vanessa and 15% of the  
value of sales on the night to spend on  
any of our products for yourself.  
To book a date or if you have any ques-  
tions call 07967 737469 or email  
pamperwithtropic@gmail.com

# ART EXHIBITION & CRAFT FAIR

Sibford Gower Endowed Primary School

Sat 7th and Sun 8th March 2015

10.30am - 4.30pm

More than 200 artworks by national and local artists

All day cafe

Quality Craft Stalls

Children's Craft Workshops

For more information please contact:

Sibford Gower Primary School PTA - [sibfordprimarypta@gmail.com](mailto:sibfordprimarypta@gmail.com)

Sibford Gower Endowed Primary School

Acre Ditch, Sibford Gower, Banbury OX15 5RW



C. A. Berger

Painting & Decorating  
Interiors & Exteriors  
Residential & Commercial  
Carpentry Repairs  
and  
Property Maintenance

Mobile: 07875 212 315

Office Tel/Fax:  
01295 738633

## GODSWELL NATURAL THERAPY CENTRE

Godswell Lodge, Church Street, Bloxham, OX15 4ES  
Tel: 01295 722788

\*\*\*\*\*

Acupuncture ; Body & Face Therapies ;  
Bowen Technique ; Chiropody/Podiatry ; Cognitive  
Behavioural Therapy (CBT) ; Continence Advice  
(for women and men) ; Counselling ; Cranio-Sacral  
Therapy ; Homeopathy ; Hypnotherapy ; Lympha-  
tic Drainage Massage ; Massage (inc deep tissue, hot  
stone and Indian Head) ; McTimoney-Corley Spinal  
Therapy; Nutritional Therapy ;


\*\*\*\*\*

*Fully qualified and professional therapists*

See website for further details:-

[www.bloxhamsurgerv.co.uk](http://www.bloxhamsurgerv.co.uk)


(follow the link to Godswell NTC)



### FARMHOUSE BED AND BREAKFAST GRANGE FARM, SWALCLIFFE

*Enjoy warm hospitality & peaceful  
surroundings in our comfortable  
18th C Farmhouse*

**CONTACT BARBARA TAYLOR**  
TEL.01295 780206 or 0771 2895728  
[WWW.swalcliffegrance.com](http://WWW.swalcliffegrance.com)



Contributions for the  
April  
Sibford Scene  
to the Editor by  
March 17th

President Glennis Hardman welcomed a good attendance with three guests (Sarah Bradford, Brian Joynes and Peter Hardman). She also informed the Members that the reason for our January speakers (Dave Talbot) non attendance was due to the fact that he, sadly, had died on 17th October 2014.

Happily, this months speaker, Dr David Mitchell, arrived in good time and entertained us with a talk entitled 'Experiences with Guide Dogs for the Blind'. He was accompanied by his wife Susan, his current guide dog Elliott and his retired guide dog Pickle. The head office of Guide Dogs for the Blind is just outside Leamington so this is a very local topic. David explained the history of guide dogs and the organisation providing some interesting facts along the way, for example each of the 90 registered dogs during WW2 had to have its own ration book! He explained how current day breeding, training and the process of matching dog to owner are managed. This is an expensive undertaking - in total each guide dog costs £50,000 to produce. David also gave us a better understanding of the hazards faced by blind and partially sighted people. Please think twice before parking on a pavement - this is a real problem for guide dog and owner. This was an educational and insightful presentation also it was good to meet Elliott and Pickle and to see at first hand how well trained and yet affectionate the dogs are. The speaker was thanked by Glennis Hardman who has had some experience with a guide dog puppy called Charm, looked after by her daughter, Elaine, during 2014 and now on formal training in Bristol. It is hoped that a Group Visit to the kennels in Leamington Spa can be arranged during the coming Summer.

Jan Warner, assisted by her daughter Sarah, served tea with home baked Welsh Cakes, lemon drizzle cake and biscuits. Our competition for a dog picture or photo was judged by Susan Mitchell who awarded 1st to Rosemary Neal (Willow), 2nd Miriam Hembrey (Nicky) and 3rd Kathleen Winter (Tessa).

Tuesday, 10th March, is the date of our next Meeting. Jane Stubbs will be giving a talk 'Women in Victorian Times

**LETTERCARVE**

**.COM**

HAND-CARVED HARDWOOD SIGNS FOR THE HOME AND WORKPLACE.  
SUITABLE FOR HOUSES, SCHOOLS, ESTATES, FARMS, STABLES, KENNELS, OFFICES.

**MADE LOCALLY IN SIBFORD GOWER.**

Church Services

Society of Friends  
Roman Catholic Mass

Sunday at 10.30 am  
Wroxton Sunday at 9.00 am  
Brailes Sunday at 11.30 am  
Hook Norton Sunday at 10.30 am

Baptist

Holy Trinity Church

Services in March

Sunday 1st Benefice Holy Communion at Sibford. The new Archdeacon of Dorchester, the Ven Judy French, will be presiding and preaching

Sunday 8th 8am BCP Holy Communion Ronald Hakes  
9.30am Holy Communion Hazel Scarr

Sunday 15th Mothering Sunday

10am Family Service with flowers for all mothers. John Tattersall

Sunday 22nd PASSION SUNDAY

9.30am Holy Communion Liz Hawkes

Sunday 29th 9.45am Procession of Palms, Reading of the Passion, Holy Communion, Epwell

9 a.m \*



**RED HORSE VALE LTD**

All Types of Fuel, Coal, Smokeless, Gas,  
Logs, Kindling, Barbecue Needs  
Central Heating Oil, Oil Tanks & Coal Bunkers  
Landscape & Building Materials, Garden Centre &  
Garden Supplies. Farm & Country Sundries  
Equestrian Products, Horse & Pet Feeds  
Open: Monday - Saturday 8am - 5pm  
Windmill Farm, Banbury Road (A422),  
Oxhill, Warwickshire CV35 ORP  
Tel: 01926642832  
Fax: 01926 642 853 [www.redhorsevale.co.uk](http://www.redhorsevale.co.uk)

*PC problems*

Get IT sorted

- ◆ Qualified PC technician,
- ◆ Expert advice,
- ◆ Competitive rates,

[www.oxoncomputers.co.uk](http://www.oxoncomputers.co.uk)

Get IT sorted

**Tel Dan: 01295 788766**

# Sibford Bus Services

## Cherwell Rural Dial-A-Ride Scheme

A mini bus with tail-lift to take **elderly or disabled people** and escort to Banbury (max fare £1.60) Door-to-Door service. Book at least one day in advance. Operates on Wednesdays & Thursdays. Phone 263777 for details. BCTA also takes bookings for groups of 8 or more on a weekly/monthly basis (Wednesdays & Thursdays) to and from Banbury. Tel; 263777

Stagecoach – Timetable commencing 31<sup>st</sup> May 2009  
Mondays to Saturdays (No services on Sundays or Public Holidays)

### Bus 50A. From Banbury towards Stratford-upon-Avon

Banbury, Bus Station	08.30	10.55	12.45	14.26	16.05	17.10	18.10
Sibford Ferris, Cross Roads	08.52	11.17	13.07	14.48	16.27	17.32	18.32
Sibford Gower, School	08.55	11.20	13.10	14.51	16.30	17.35	18.35
Shipston,	09.15	11.40	13.35	15.11	16.50	17.55	18.55
Stratford on Avon, Wood St.	09.40	12.09	14.04	15.40	17.19	18.24	19.24

### Bus 50A. From Stratford-upon-Avon towards Banbury

	NS					Sch	Term	
						Hols	time	
S on A, Wood St	06.20	07.10	09.05	11.10	13.10	15.10	15.24	16.24
S G, School	07.04	07.55	09.56	11.56	13.56	15.56	16.10	17.14
S F, Cross Roads	07.07	07.58	09.59	11.59	13.59	15.59	16.13	17.17
Ban, Bus Station	07.28	08.25	10.21	12.21	14.21	16.21	16.35	17.39

NS = Not Saturdays

All buses will operate low floor wheelchair accessible vehicles.

For complete details of all the stops that are served by service 50A, timetables are obtainable from the Tourist Information Centre in Castle Quay, Banbury.

Fares:-

Sibford Ferris & Sibford Gower to Banbury: Single £2.80 (Child£1.25)  
Return £5.25 (Child £2.35)

Sibford Ferris & Sibford Gower to Stratford: Single £4.30 (Child £2.85)  
Return £6.30 (Child £4.20)

Unlimited travel Cards are available for 1, 7 or 28 days but are regional and need to be bought in advance. Contact the Stagecoach sales office in Stratford tel; 01789 412680 for more details.

# Calendar of Events

## March

- Tue 3rd Friendship Club - Dogs for the Disabled p3  
Fri 6th Sibford School Open Morning. P12  
Sat 7th Care for a Cuppa - Coffee morning at The Leys S. Gower p4  
Sat 7 & Sun 8 Primary School Art Exhibition. 10.30 - 4.30 p20  
Mon 9th Sibfords Walking Group 10am V.Hall p6  
Mon 9th Ferris Parish Council Meeting 7.45pm (sports hall classroom)  
Tue 10th W.I. - Women in Victorian Times p21  
Wed 11th Mobile Library in the Sibfords (2.40-4.10pm)  
Wed 11th Cafe Scientifique at Sibford School p13  
Wed 11th Horticultural Society - Exciting Plants for Pots p16  
Fri 13th St Patricks Night at Swacliffe Village Hall p11  
Sun 15th Sibford Cricket Club AGM 6.30pm Wykham Arms p8  
Tue 17th Friendship Club Trip to Slimbridge p3  
Tue 17th Deadline for contributions to the April Sibford Scene p20  
Thu 19th Sibfords Society AGM and Swifts p14  
Mon 23rd Sibfords Walking Group 10am V.Hall p6  
Mon 23rd Lent Austerity Lunch at the Rectory  
Tue 24th Village Hall Film Night p4  
Wed 25th Mobile Library in the Sibfords (2.40-4.10pm)  
Thu 26th Village Hall Film Night - Mr Turner p7  
Sat 28th Parish Spring Clean. 10am Village Hall or Lanes End Corner p3, p8

## April (part)

- Fri 3rd Good Friday Easter Egg Trail from the Village Hall p7  
Mon 13th Sibfords Walking Group 10am V.Hall p6  
Wed 15th Gower Annual Parish Meeting - Village Hall 7.30pm.  
Mon 20th Sibfords Walking Group 10am V.Hall p6  
Mon 20th Gower Annual Parish Council Meeting in Primary School - 8pm.  
Thu 23rd Village Hall Film Night - The Imitation Game p7  
Cover picture; Looking across the valley towards Burdrop and the Gower

### Sibford Scene

Editor; Adrian Lamb. Grounds Farm, Sibford Ferris. 780380

e-mail [adrian.lamb1@btconnect.com](mailto:adrian.lamb1@btconnect.com)

Advertising; Ivor Hopkyns, Elmridge Farmhouse, Sibford Gower,

Banbury, Oxon. OX15 5RT. Tel 788367

e-mail [sallyandivorhopkyns@hotmail.com](mailto:sallyandivorhopkyns@hotmail.com)