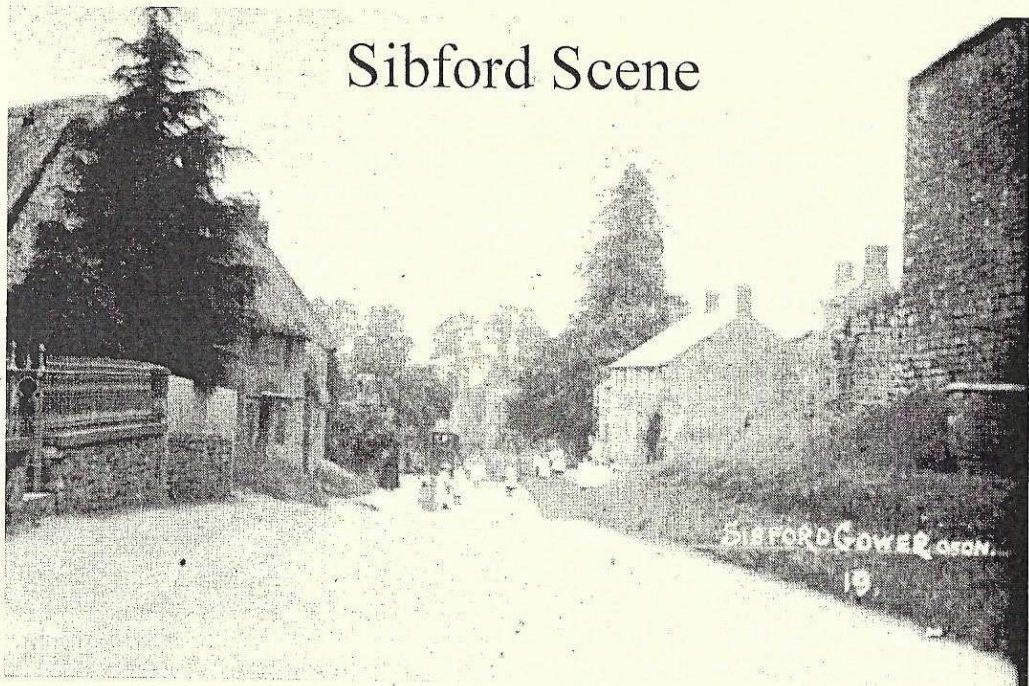


# Sibford Scene



February 2015

No. 369

## Annual Closure of the Permissive Paths at Green Acres

Tuesday 10th February for 24 hours only

## Sibfords Society Annual Social

Thursday 19th February in the Village Hall from 7pm

## Village Hall Film Night

Tuesday 24th February

Boyhood

Primary School Art Exhibition

Saturday 7th and Sunday 8th March

## Nature Notes

Dec 14th Two red kites were seen to the south of Sibford Ferris today. They are now being seen quite often on that side of the village.

Dec 28th A chaffinch that has a growth on its right foot comes to take food that I put out on the wheely bin. It could be the same bird that came last winter with a similar foot. It does not seem to be greatly bothered by it.

Dec 30th Gnats were dancing in this afternoons sunshine. I do wonder where they come from as there is about an inch of ice over the water everywhere after the last few nights of sharp frost.

Jan 1st 2014 was a wet year. Jan and Feb were very wet months together bringing over 12 inches (305mm) of rain which following the 3.91 inches (99mm) that fell in Dec 2013, caused much flooding especially in the Somerset Levels. If we pick out the wettest two month period of that winter from Dec 16th 2013 to Feb 15th 2014 I measured an exceptional 13.72 inches (348mm). The total rainfall for the year was 36.1 inches (917mm). The wettest month was Jan 6.82 inches (173mm) followed by Feb with 5.28 inches (134mm). The driest was September with 0.43 inches (11mm) followed by July with 1.19 inches (30mm). Again with record average temperatures both in the UK and globally, and with the weather patterns to go with the temperature rise we seem to be following the scientists prediction for global warming. At least a target to limit global warming to 2C has been set but very little effort is being made to meet that target. On the contrary all the talk seems to be about encouraging more flying by building more runways at airports.

Jan 4th Not having seen any ice towers for a few years there was one in my

### HOLMBY HOUSE

SIBFORD FERRIS

A stunning setting for special celebrations

*From Buffets to Gourmet Dinners*

Formal dining for large groups

Garden parties Business meetings

Wedding receptions

Luxurious B & B

Self-catering accommodation

Tel/Fax:01295 780104

[www.holmbyhouse.com](http://www.holmbyhouse.com)

[Sally.wass@btinternet.com](mailto:Sally.wass@btinternet.com)



BESPOKE DESIGN SERVICE FOR  
CUSTOM MADE FURNISHINGS

**Curtains, Blinds & Cushions**

**Loose covers**

**Headboards & bedspreads**

**Curtain poles & tracks**

**New Sofas & chairs & reupholstery**

**Lampshade making**

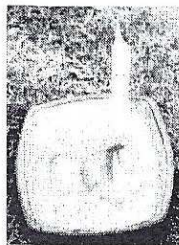
01295 788145

[info@annwoolgrove.com](mailto:info@annwoolgrove.com)

[www.annwoolgrove.com](http://www.annwoolgrove.com)



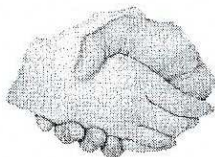
rain gauge where I have not seen one before. It was only an inch and a quarter tall and very slender; so slender that I did not manage to get the ice out with it attached for a photograph. A male blackcap came to feed on the window ledge this morning. Jan 7th Although quite a cold morning the birds seem to think that spring is in the air. The woodpecker is drumming, the song thrush and robins are singing, the rooks are sitting by their nests, the nuthatches calling excitedly and the great tit sharpening its saw as we used to say. We don't often hear a hand saw being sharpened with a file these days but it made a sound very like that made by a great tit.



*An Ice Tower*

Jan 8th The birds usually ignore the holly berries on the Christmas decorations when I put them out. This year I hung them in a bush and after a few days a female blackbird tried them and found them still edible. I think she may have been the only one to try them and has now taken them all.

Jan 9th Some very early aconites are blooming in a Burdrop garden.



### Friendship Club

If it's not to late I wish everyone a  
**VERY HAPPY NEW YEAR**

The Sibford Friendship Club meet for the 1st time in  
2015 on **TUESDAY FEB 3rd** at 2pm in the small room

at Sibford Village Hall.

At our 1st Meeting we will discuss what we will be doing this year.

Anyone wishing to join us **PLEASE** come along and see what we are all about.

### PIT STOP CATERING

Sibford School Car Park  
Every Tuesday evening  
between 5.30 and 8 pm.

With

**FISH&CHIPS**  
**SOUTHERN FRIED**  
**CHICKEN & CHIPS**

**PIE & CHIPS**

**PLUS** a "Special Meal" every week

### PILATES IN SIBFORD

Madeleine Wilson M. Sc, Mat &  
Studio Master Teacher  
Offers

Bespoke One to One  
and Duet sessions

Training on Specialised Pilates  
Equipment

Reformers, Chairs, Barrels  
& Cadillac & Small Group  
Matwork Classes

For all Levels from Beginners to  
Advanced

Tel: 01295 780279

Mob: 07905 953300

E:mwl@linuxwaves.com

www.pilatesinsibford.co.uk

## VILLAGE HALL NEWS

The Village Hall Committee would like to thank Adam Leyburn and Simon Chard for devising the Quiz and doing such a great job as Quizmasters at the close of last year. We hope you all enjoyed it. Thanks too to Chris Sabin for erecting the lovely Christmas tree outside the Village Hall. Dates for your diary

Film nights will be on February 24th, March 24th and April 28th. More to be arranged after that. Our February film is "Boyhood" and shows the joys and pitfalls of growing up as seen through

**Victoria Smith**  
**MASSAGE THERAPIST**  
**@ Serenity, Sibford Gower**  
***"Life takes it out of you, but***  
***Massage puts it back"***  
**07974 231571**

**LOGS, HAY,**  
**STRAW**  
**Garden Manure**  
**Half pigs for the**  
**freezer (limited)**  
**Antony Sabin**  
**01295788421**

## Sibford Stores & Post Office, Sibford Ferris

OX15 5RG

Telephone 01295 788317 / 788348

**YOUR LOCAL CONVENIENCE STORE AND NEWSAGENT**

We deliver newspapers and magazines 7 days a week to all the surrounding area. Place your regular order today, whether for 1 day a week or 7. Always a wide selection of magazines available, specialist titles available to order.

Chilled & Frozen foods, groceries, cigarettes, beers, wines and spirits, fresh fruit and vegetables, pet foods, household goods, toiletries & medical requisites and lots, lots more.....

Health Lottery, Photocopying, fax service, dry cleaning

We will also undertake your mailings for you, just ask.

Always an excellent selection of Hook Norton bottled beers in stock.

Telephone your grocery order for free local delivery.

### OPENING HOURS

Monday to Saturday 7.30am to 7.30pm

Sunday 7.30am to 4.00pm

**PLEASE SUPPORT YOUR LOCAL POST OFFICE, THERE ARE LOTS OF  
PRODUCTS AND SERVICES AVAILABLE ON YOUR DOORSTEP**



the eyes of a child named Mason [Ellar Coltrane] .his parents [Patricia Arquette, Ethan Hawke] and sister. Written and directed by Richard Linklater, the film was shot over a 12 year period from May 2002 to October 2013. It shows the growth of young Mason and his sister to adulthood. Winner of the Golden Globe Award for best Motion Picture - Drama. Damn right they're back!! Damn Right I Got The Blues will be playing at Sibford Village Hall on Saturday 27th June. After a five-year break, the band is back in town! Ant Harwood, Ken Follett and Sonic Boom Boy will be bringing along a new drummer Daren Cook, lots of new [old] songs and of course, the Baroness of the Blues herself, Floella Benjamin. "Since the band last played in the village, we have been gigging up and down the country as well as in Germany and Italy. In Pietrasanta, Tuscany, over 5,000 people crowded into the ancient town square for the band's gig and over 50,000 people streamed the gig online. Sibford has always been one of our favourite gigs and we can't wait to see you in June". Save the date and buff up your dancing shoes. Lights out! Please can all the regular users make sure that all lights are switched off [and the hot water urn] before leaving the hall. Every week something is left on!



## The Firs Garage

[www.firs-garage.com](http://www.firs-garage.com)

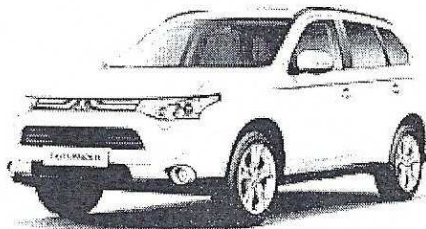
Family business established 1960



SSANGYONG

Tel: 01608 737349 / 737641

Hook Norton, OX15 5DD



All-new Mitsubishi Outlander 4x4

Extensive range of new  
and used cars & 4x4's:  
petrol, diesel & electric  
Part exchange welcome

Service  
MOT Parts  
Bodyshop  
Fuel Shop

*We look forward to seeing you, the kettle is on!*

**ALL MAKES  
SERVICING  
COMPETITIVE PRICES**

## WELCOME TO SIBFORD

If you are a new resident of Sibford or have new neighbours who have not yet received a copy of the "Welcome to Sibford" booklet, please telephone Ivor Hopkyns on 788367 (Gower or Burdrop) or Nic Durrant on 788865 (Ferris), and a copy will be delivered to you. The information will help to make you feel at home - by acquainting you with the services, schools, clubs and societies that are currently active in the villages.

## YOGA

Sibford Village Hall

Tuesdays 9.00-10.00am

Fridays 9.00-10.00am  
(beginners welcome)

Any enquiries to:

Juliette – 07703 836 856

[Juliette53@btinternet.com](mailto:Juliette53@btinternet.com)

**Delivery Round All Houses**  
The Sibfords and Burdrop = £35  
Epwell & Shutford = £25 will split  
Once every month  
01295 780620



## LOGS



TOP QUALITY, SPLIT,  
SEASONED, HARDWOOD LOGS  
STACKING SERVICE AVAILABLE

**DAVID RANDALL**

01608 738109 or 07581 205451

E:MAIL [katylou63@sky.com](mailto:katylou63@sky.com)

- Bespoke bathrooms, kitchens and carpentry
- Fitted furniture
- Plumbing and electrical works
- Home improvements and renovations

# Hugo Seely

Trading in the Sibfords since 1992

From concept to completion

*Exceptional value,  
exceptional service*

T: 01295 780355

or 07773 319239

E: [hugo.seely@gmail.com](mailto:hugo.seely@gmail.com)

*Excellent references*



### Sibford Gower Parish Council Meeting – 7<sup>th</sup> January 2015

The Meeting included the following matters. Chairman's Report: Bishop Blaize - The Chairman said that he had no further news of the current position at the present time. Defibrillator – The subject will be on the agenda of the Annual Parish Meeting which takes place a little later this year when rapid response volunteers will be sought so that matters may be taken forward. Miriam Tebbs' Land – Again, the future use of this plot of land will feature at the forthcoming Annual Parish Meeting and the views of the residents in Burdrop will be sought. Parish Council Membership – The names of local residents who may be willing to serve on the Parish Council is an issue and is currently receiving attention. Financial Matters: With regard to the precept for 2015/2016 and based on the fact that anticipated income and expenditure are similar to the current year, £6,400 is considered appropriate. Churchyard and Parish Council Burial Ground: The Parish Council received a letter dated 11th December 2014 from the Privy Council Office enclosing a copy of the Final Order in Council dated 10th December 2014 relating to burials in Holy Trinity Churchyard, Sibford Gower informing that burials should be discontinued forthwith. The Churchyard is, therefore, now formerly closed. The Parish Council received a quotation from Thomas Fox Landscaping & Maintenance for maintenance work and this is under current consideration. Highways: There was nothing to report at this stage of the Meeting. Footpaths: Cllr Susan Bannister reports on any matters that require attention and she had nothing upon which to comment apart from one particular footpath where she had taken upon herself to carry out some cutting back. The Councillors were appreciative of what she does. Wheathills Farm: The owner of Wheathills Farm advised the Parish Council on 13th October 2014 that it was to be sold. It will be sold by private treaty and included will be a claw back clause to help reduce the likelihood of it being viewed as a future residential development site. Any other business: Village Pond: The Clerk reported that on 7th January 2015, after enquiring about the present position, he was advised by Oxfordshire County Council that there was still no news about the Parish Council's Town or Village Green application. Superfast Broadband: The Chairman made reference to a report received from Mr Tony More on this subject. With regard to Sibford Gower it is expected that when the new services are available, households and businesses with an interest in increasing their broadband speeds will be able to subscribe to a new fast service at whatever prevailing competitive rates from their preferred broadband provider at that time. Public Participation: Two local residents, present at the Meeting, raised the subject of the extremely poor condition of the road surfaces in Main Street and Bonds End Lane. The Chairman said that because of lack of funds Oxfordshire Highways was not able at this stage to carry out remedial repair work on such relatively minor roads. However, the Clerk was instructed to write to check whether or not work could be carried out. Another local resident, present at the Meeting, once again commented on the lack of suitable drainage in Colony Road where work needs to be carried out to resolve the problem. Here again, the Clerk was instructed to contact Oxfordshire Highways. Flooding of part of the road adjacent to the Village Pond was raised and the Clerk will also refer this to Oxfordshire Highways.

Date of Next Meeting: The next Meeting will be on 20th April 2015 starting at 8pm in the Staff Room of the Primary School.

## Goodbye to Diesel - Cat of the village

I bought Wheathills Farm in 1999 and started looking for farm cats immediately. Diesel came into our lives from the Cats Protection League in Leamington Spa where he had appeared on their doormat one day waiting to be let in.

I fell for him straight away - not only because he was a beautiful looking cat but also because his unique character was immediately evident. He came across, introduced himself and started to purr loudly with a very throaty grumble that sounded like a Diesel engine, making the choice of his name an easy one.

He settled into life at Wheathills with ease, alongside his shy little 'sister' Porridge who came from the RSPCA in Oxford. They made a formidable hunting team and soon cleared the area of rats and mice as well as making a significant dent in the bunny population.

Diesel became well known around the Sibfords as he took to visiting the primary school and queuing with the children at dinner time, as well as attending the occasional church service or family party at the village hall. He was often seen sharing a lunchtime snack with Church Warden Eric Payne as he sat on the church wall or being clutched in the arms of grieving relatives as they visited loved ones graves in the churchyard. He also befriended a neighbour undergoing dialysis at the JR and provided comfort and friendship when it was needed - one of the many friends he made during his lifetime.

It wasn't just people who befriended him though, even cat-hating dogs seemed to warm to his character and his affinity with the horses and ponies at the farm had to be seen to be believed.

Diesel was also known for his capable skills as a hitch hiker, once happily jumping into a car for a lift to another cats home in a case of mistaken identity, another time appearing in the front seat of a car as it made its way to Cheltenham after visiting the yard with the sunroof open.

As he got older, his rumbly purr diminished in volume, the pinkness of his nose faded and all but four of his back teeth fell out, yet he remained a capable ratter and rabbitier right to the end, choosing to suffocate his victims with a gummy grip and lots of determination.

Through the years we collected more and more stories of exploits and activities Diesel had been involved in, too many to mention here, but each story demonstrating how truly extraordinary this ordinary looking cat was. We said goodbye to Diesel on January 2nd when he very quickly went from living to dying. A scan showed a massive growth behind his liver so he was sent off to sleep surrounded by people who loved him. He was 19 years old. He has left a cat-shaped hole in the lives of those who were privileged to know him and will always be fondly remembered. Tracey Morbey



### Jennifer Wealsby- Art and Design

Tutor of drawing and painting classes since 1988

Mondays 10-12am Sibford Village Hall , Small Hall. - Pastels

Fridays 1-3pm Sibford Village Hall- Drawing and watercolour  
also

Wednesdays 9.30-11.30am at Churchill Village Hall

Wednesdays 1-3pm Spelsbury Memorial Hall

Fridays 9.30-11.30am Holly Tree Deddington

(All Drawing and watercolour classes)

To register your interest in these any of these classes or find out more details you can ring me on 01608 730401 Or email [jgw4art@gmail.com](mailto:jgw4art@gmail.com)



## SIBFORD GOWER PARISH COUNCIL

A number of Parish Councillors have indicated their desire to stand down, and volunteers to serve are needed. Anyone willing to be nominated is asked to contact the Clerk, Peter Hardman on 01295 780391 (email: hardman214@btinternet.com) for details.

### Thank you for our Football Goals!

We would like to express our sincere thanks to Juliette Glazebrook, for her efforts in securing funding and resource in installing the wonderful football goals now installed on the village hall field.

Whilst it may not have been any easy job, it has made a huge amount of boys extremely happy over the Christmas period - and long may it continue!

As a family, we have always wondered why the Sibford Gower green space has not been better utilised for the good of village children - and as I write, I am happy in the knowledge that our 2 boys - along with other boys of all ages (from 7yrs up to 15 years) are currently all playing a game of football together at the village hall field!

Perhaps - as a village - we could capitalise on the momentum that this has created, to provide facilities for children of ALL ages! Thank you Juliette.

The Heather Family, Sibford Gower

For Practical Garden Assistance

Please contact Nick Taylor

07425136992

johnnicktaylor31@gmail.com

01295 680206

01295 788397

All types of garden

work undertaken

### Micks Sticks

Fire Lighting Wood For Sale

£3.00 per big bag

Call in anytime and ask for

Mick Canning, at

The Old Malt House,

Sibford Ferris

Tel; 01295 780321

OPUS

**OPUS Property**

**Services Ltd**

*Bathroom &*

*Kitchen Design*

*and Installation*

From minor alterations to full refurbishment we can transform your bathroom or kitchen into an inspirational space. We offer a complete service from the first sack of rubbish out to the final polish.

Call Alan or Catherine on  
01295 780652 or 07816592124

Visit: [www.opusps.co.uk](http://www.opusps.co.uk)  
for photo gallery and to learn more about us.

## David Ryall

David Ryall, a former resident of Sibford Gower died on Christmas Day at the age of 79. Our sympathies go out to his widow Penny, his son Jonathan and daughters Imogen and Charlie. David who has lived in Sussex with Penny for the last few years will be best remembered in the village as the originator, script writer and Director of the highly successful Sibford Millennium Pageant, played by a large cast of villagers for three nights in the year 2000. His brilliant conception was of a pageant to record the history of Sibford over 1000 years which he harnessed with the presence in the early part of the 20th century of Frank Lascelles the creator and owner of the Manor in Sibford Gower, son of the then Rector and the Royal Pageant Master who produced large scale pageants all over the world. This combination and the brilliant script which resulted was a reflection of the enormous stage experience and success as an actor which David Ryall achieved and in which he continued right up to his death.

David was one of the most successful character actors of his time and on the stage played important roles for leading directors including Laurence Olivier and Peter Hall at both the National Theatre and the Royal Shakespeare in Stratford on Avon. Indeed just two months before the Pageant was to be performed, he had to hand the Directorship to Amanda Laidler, an experienced stage director when he was summoned by Peter Hall to take the leading part in a new play, *Tantalus* which was opening in Denver, Colorado and which later transferred to many large stages in the UK. (The production played over 10 hours and David's presence was required on stage in all scenes except one.)

David's stage, television and film appearances were numerous. Television programmes included *The Pallisers*, *Lovejoy*, *Casualty*, *The Bill*, *Doctors*, *The Singing Detective*, *Prime Suspect*, *Inspector Morse*, *Holby City*, *Outnumbered*, *Goodnight Sweet-*

Holiday Let  
For 1 or 2 people  
In quiet, self-contained  
annexe  
Contact Judy Abbott  
01295 780731

Holiday apartment overlooking  
Lake Trasimeno, Umbria, Italy.  
Self contained ground floor apartment; open plan lounge/ kitchen /diner, 2 bedrooms, 2 bathrooms, shared use of private garden/pool, panoramic lake views, close to bars, restaurants, shops and lake ferry. See us on [www.ownersdirect.co.uk](http://www.ownersdirect.co.uk) property ref IT12664  
Or for further details; please contact local residents:- [linckchick@gmail.com](mailto:linckchick@gmail.com)



heart, *The Village*, *Trollied*. Plays at the National Theatre included *The Royal Hunt of the Sun*, *the National Health*, *The Captain of Kopenick*, *Guys and Dolls*, *the Beggars Opera*, *Coriolanus*, *Hamlet*, *Democracy* and in Peter Hall's 80th birthday production of *Twelfth Night*. Film parts were numerous and perhaps his best known was *Harry Potter and the Deathly Hallows*. His concluding stage appearance was during the course of his final illness when he played *King Lear* on the London stage with both his daughters in the cast. We in the village were very fortunate to have such a friendly and distinguished actor living in our midst and we remain so with others who still live here, as well as the former Director of Music at the Royal Shakespeare Theatre for 35 years, Guy Wolfenden whom David Ryall persuaded to write special music for the Pageant. This, recorded by Birmingham Symphonic Winds, the orchestra created and led by Keith Allen, yet another Sibford resident, helped to make the Pageant into the great production it turned out to be.

---

### FLY-TIPPING AT THE ELMS BOTTLE BANK LAY-BY

If any Sibford residents are responsible for the recent fly-tipping incidents next to the bottle banks by the Elms crossroads, would they please dispose of their rubbish via the official amenities. The facilities in this lay-by are for the disposal of bottles and jars only and the fly-tipping is illegal.

Clearing the rubbish ultimately costs everyone and if the problem continues, the bottle banks may have to be removed.

Thank you for your cooperation.

Sibford Ferris Parish Council

#### Serenity Beauty Salon

Gautherns Barn, Sibford Gower

Open Tuesday to Saturday 9am-4pm

Plus late night Wednesday's

Specialists in Environ and Guinot

Facials and Skincare

OPI Manicure and Pedicures

Waxing, Massage, Lash Tinting

and Removal of Skin Blemishes

Stockist of Jane Iredale

Mineral Make-Up

Contact Jo direct by email on

[joalum22@yahoo.com](mailto:joalum22@yahoo.com).

text 07891 220275 or leave a message

on 01295 788463

£5 off a treatment with Jo with this ad!

#### BOXERSIZE and METAFIT

#### FITNESS SESSION

Sibford Village Hall

Every Monday at 7pm from Feb 16th

Non contact, Great cardio burn, Strength training, confidence boost, Stress relief

Men and women welcome

all ages and abilities.

For booking or further information

contact Lorraine on 07802537100

[willaminas@outlook.com](mailto:willaminas@outlook.com)



## PUPILS ACHIEVE BEYOND EXPECTATIONS

Pupils at Sibford School in the Ferris are performing better than predicted across more than 10 subject areas, according to Value Added Results released by the school.

Figures calculated by the CEM Centre at Durham University show that Sibford students achieved results that were 'statistically significant' better than predicted in Additional Science, Biology, Chemistry, French, History, ICT, Mathematics, Physics, Religious Studies, Core Science and Statistics.

Sibford Head, Michael Goodwin, said: "What this means in layman's terms is that, on average, students who took GCSEs in these subjects last summer achieved *at least* half a grade higher than their measured potential would have predicted. So, for example, a student predicted to gain a mid A grade will, on average, have gained an A\* grade. "As a non selective school we take pupils of all abilities, and to be able to demonstrate that we are adding this value to the education of our young people is excellent news to be starting the New Year with."

## PUPILS SWING INTO THE RAINFOREST

Junior pupils at Sibford School arrived back after the Christmas break to find their classrooms transformed into rainforests ... complete with snakes, parrots, monkeys and gorillas! For the next six weeks the school will be operating a 'creative curriculum' with lessons in nearly all subject areas being based around the rainforest. Junior school assistant head, Edward Rossiter explained: "By introducing a thematic approach to teaching we are supporting the children's natural curiosity and stimulating their creativity. "While Geography is an obvious connection, all subjects

can be related back to the rainforest. In History, for example, we will be finding out about the European explorers who first discovered these strange lands; in Music, we will be looking at tribal rhythms; and the connection even



*Pictured in the rainforest are six-year-olds Arthur Nash and Emma Forster-Searle.*



carries over to French, where the story of 'Mamba et l'oiseau-crocodile' will be used as the basis for the language lessons.

"The children were so excited to find their classrooms decked out in every shade of green imaginable ... complete with leaves, fronds and fluffy animals hanging from the ceilings ... that coming back to lessons after the break didn't seem like a challenge at all!"

### OPEN MORNING

Sibford School's first Open Morning of 2015 will take place on Friday 6 March. The event will start at 9.45am and will include a presentation by Sibford Head Michael Goodwin and tours of both the Junior and Senior Schools. Further information can be found on the school website ([www.sibfordschool.co.uk](http://www.sibfordschool.co.uk)) or from the school's admissions officer, Elspeth Gregory on 01295 781203.

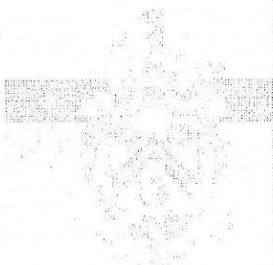
### RAIN OR SHINE THEATRE COMPANY

The Rain or Shine Theatre Company will be returning to Sibford in the summer for their annual open-air production. Shakespeare's The Tempest will be performed in the school's Holly House garden on Thursday 18 June. Save the date!

Damian and Debbie

Welcome you to enjoy the atmosphere of our 16<sup>th</sup> century thatched Inn.

- Bar and a la carte menus available lunch & dinner.
- Excellent Sunday lunch - to suit the weather!
- New food and wine takeaway menu.
- Wednesday steak and wine night £15.00
- Selection of fine wines and real cask ales.
- Happy hour and a half every Wednesday evening!
- Gift vouchers available.



THE  
WYKHAM  
ARMS

Temple Mill Road  
Sibford Gower  
Nr. Banbury  
OX15 5RX

Tel: 01295 788808 / 07

Take a look at our new website  
[www.wykehamarms.co.uk](http://www.wykehamarms.co.uk)

email.  
[info@wykehamarms.co.uk](mailto:info@wykehamarms.co.uk)

Opening Times  
12.00am-3.00pm  
6.00pm-11.30pm

Bar only Sunday Night  
Closed all day Monday  
(Except bank holidays)



## Reminder - Invitation to a social evening for members and non-members

You are invited to a friendly get-together on Thursday, 19th  
February 2015, at the Village Hall, 7 for 7.30 p.m.

Please bring a dish of food, hot or cold, ready to be served – plus your own drinks.  
Raffle and entertainment. Do come and join us! RSVP by Monday  
16th February (latest) Bryan Mills: 7802480 or Diana Hughes: 780506

### Church News

The Christmas Bazaar was excellent – great fun, a good variety of stalls, delicious refreshments, and, thanks to the hard work of David and Diana Hughes, the most financially successful yet.

We have enjoyed hosting the Methodist congregation for their Covenant Service, and are looking forward to joining with the Quakers during the Week of Prayer for Christian Unity.

February commences with the lovely festival of Candlemas - when traditionally we thank God for Jesus the Light of the World but also for candles to illuminate our darkness. We hope people will come to the short Family Service at 4.30pm on February 1st - children specially welcomed - where there will be lit candles, a cheerful short act of worship and then Afternoon Tea for everyone.

### Holly's Beauty

Fully qualified NVQ level 2 and 3 beauty therapist for a wide range of treatments carried out in a treatment room within my home. Very professional and efficient service, very reasonable prices. Previous salon experience. Fully insured. Flexible hours to suit your needs. Treatments include:

- Waxing
- Swedish massage and facials
- Tinting
- Makeup
- Hot stone therapy massage

For any details prices or bookings please don't hesitate to contact me. Based in Sibford Gower  
01295780705 / 07854016463

### Bed & Breakfast

**AGDON FARM**

**Nr Brailes**

**Comfortable rooms  
in old stone farmhouse**

**Tel: Maggie Cripps**

**01608 685226**

### Richard Wallington Builder

Block Paver Drives a Speciality  
Also Extensions, Patios  
Fencing etc.

High Quality Work, Free Estimates  
01295 780705 07743 932545  
(Sibford Gower) (Mobile)

### BIKE REPAIRS & SERVICING



General servicing  
Repairs  
Cleaning & maintenance  
All makes and types of bike  
Reasonable rates, speedy service

For all your bike repair needs, call: 01295 780355



COMMUNITY FIRST RESPONDERS FOR  
THE SIBFORDS - *a joint initiative*

Following a presentation and demonstration by David England, the NHS co-ordinator for Oxfordshire's First Responder Groups, and supported by members of the Epwell Group, the Parish Councils for the Gower, Burdrop and Ferris would like to support an initiative to form a Community First Responder Group in the Sibfords.

Volunteers have to be over 18 years of age with a clean driving licence, and be able to offer some time every week. Responders receive free NHS training with re-training offered regularly. The on-duty responders carry a kit, including a defibrillator, oxygen and trauma equipment. When a 999 emergency call for an ambulance is received, local responders are alerted and, with their training and local knowledge, can reach the patient and offer help and reassurance until the professional ambulance team arrives.

In order to take this initiative forward we require both volunteers and a co-ordinator(s) – ideally from both parishes. If you think you would like to help in any way please register your interest via the Community First Responder's page on the Sibford's website: [www.thesibfords.org.uk/cfr](http://www.thesibfords.org.uk/cfr) or call Tim Huckvale on 780491. The website includes links to further information about Community First Responders.

*As a rural community, some distance from our nearest ambulance station, this valuable support may well benefit you, your family and your friends and neighbours. Please help!*

## Hawthorn livery

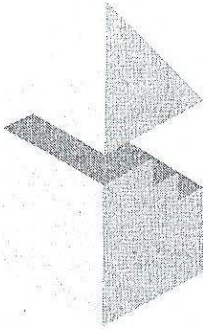
Hawthorn stud  
South Newington  
Ox15 4JP

We offer Full, Part & D.I.Y  
Secure tack room & CCTV  
50 x 50 flood lit ménage with  
show jumping equipment  
Drink making & toilet facilities  
4 Large paddocks  
Places now available  
Call in for a chat  
or phone for more details  
01608 683911 or 07798764580

## THE VILLAGE SHOP HOOK NORTON

### \*NATIONAL LOTTERY\*

Grocery - Greengrocery - Bakery  
Wines - Spirits - Confectionary  
Newspapers - Magazines - Cards  
Video Rental - Bottled Gas  
Open Monday to Friday  
8 am to 8 pm  
Saturday 8 am to 8 pm  
Sunday 8 am to 6 pm  
Telephone: 01608 737245



**DAVID BOVILL**

**ARCHITECTURAL AND PLANNING SERVICES**

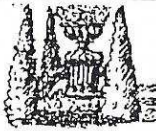
Providing a personal service from Design through Planning and Building Regulations, and beyond if required

Specialising in Extensions, Loft Extensions and Listed Buildings work

Please phone or e-mail to arrange a free initial consultation

01869 347906

davidbovill@btinternet.com



**BED AND BREAKFAST**

Buttslade House, Sibford Gower offers supremely comfortable en suite accommodation in the charming setting of a tranquil English country garden.

Contact Diana Thompson

01295 788818

Or [diana@buttsladehouse.co.uk](mailto:diana@buttsladehouse.co.uk)

[www.buttsladehouse.co.uk](http://www.buttsladehouse.co.uk)

**C. A. Berger**

Painting & Decorating  
Interiors & Exteriors  
Residential & Commercial  
Carpentry Repairs  
and  
Property Maintenance

Mobile: 07875 212 315

Office Tel/Fax:  
01295 738633

**Miss 'T' Catering.**

**Catering for events such as:  
Anniversaries, Weddings,  
Christenings, Birthday parties,  
Funerals**

**And private dinner parties.**

~ ~ ~

**Also available**

**Cutlery and Crockery Hire.**

**Contact Victoria Taylor on:**

**Mob: 07841 910037**

**Home: 01295 788924**



**QUALITY FISH  
DIRECT FROM  
GRIMSBY MARKET**

Proprietor: T.P.Martin

Tel: 07812 361853

**Best fresh fish and shell fish to your  
area direct from Grimsby on the  
Lincolnshire coast**

**I'll be at Sibford Village Hall car park**

**EVERY MONDAY from**

**approximately 4pm till 5.30pm**



Proposed trip to the graves  
of the young men from the village who died in WW1

We have more definite news of this trip now. It will be from Sunday 17<sup>th</sup> May until Tuesday 19<sup>th</sup> May. We have obtained the services of a War Graves Commission Guide who will take us to the individual graves and other places of interest, and tell us about the action there during WW1. We shall take some mementos to leave on the graves to link them to our village, and to commemorate the great sacrifice of these men who left Sibford (one of them straight from his honeymoon) for a war which was so far away in those days and from which they did not return.

We shall start our journey at 8 a.m. at the grave of William Barton who is in our own Churchyard. He was blown up in Sheerness Harbour, so brought home to rest. It must have been a great comfort to his family. As far as I am aware no-one else from Sibford was able to visit the graves of their loved ones

We shall travel by private coach, which will take us everywhere we need to go. It is estimated that we shall return at 8 p.m. on the Tuesday. We are booking accommodation at a recommended Great Western Hotel in Ypres.

The estimated cost of the whole trip is about £275, although that may vary a little depending on the numbers who come. The graves concerned are all in lovely places, and all are accessible to those of us who are past our youth! It would be lovely to have some young people with us as well.

If you have already expressed an interest, I should have been in touch by now. If anyone else is interested, please get in touch with me as soon as possible. If you have email, that is the easiest way. My email address is [judithweeks39@gmail.com](mailto:judithweeks39@gmail.com). Otherwise telephone me on 01295 788393. It would be great to have more people to join us.

Judith Weeks

## Colour Analysis by Annie Broe

I will show you which colours are best for you.

Wearing the right colours is an easy and effective way to enhance your appearance.

You will instantly look more radiant, younger and healthier

You will feel more confident

Colours are very powerful – use this power to your advantage and look fantastic!

Gift Vouchers available – the perfect Mother's Day present

For a personal colour analysis or for more details please call me on 01295 780637 or 07930 398151 or email [annie4colourandstyle@gmail.com](mailto:annie4colourandstyle@gmail.com)

What is Advocacy? At its heart advocacy is very simple, it is about helping someone to have their say. In doing so, advocacy can support people to secure their rights and obtain services they are entitled to. Advocacy reaches out to adults in some of the most marginalised and disadvantaged sections of our community, people isolated in their own home, in a care setting or in hospital. People who are experiencing tremendous difficulties in getting their views heard across a huge range of issues.

Oxfordshire Advocacy has been supporting disadvantaged adults in Oxfordshire to get their voices heard since 1992. Advocacy clients include older people, carers, those aged 50+ affected by cancer, people with learning difficulties, dementia, mental health concerns, physical or sensory impairments.

People come to Oxfordshire Advocacy facing a huge range of issues. Maybe they have just received a diagnosis of cancer but lack family or friends to accompany them to medical appointments. Maybe the lift in their block of flats has broken and they need the council to make swift repairs so that they can get to the doctors on their mobility scooter.

Oxfordshire Advocacy Advocates support people to make phone calls, prepare for and attend meetings, undertake research and whatever else is required on their issue so that they know what their options are and can get their voice heard.

**“My first experience of advocacy was the most precious gift I could have been given” Rosie Young, advocacy client and volunteer advocate with Oxfordshire Advocacy**

**Oxfordshire Advocacy (OA) could not provide their service without its dynamic and dedicated team of volunteers. OA currently has a pool of 50 volunteers and is looking to recruit more to meet the increased demand for advocacy in Oxfordshire in 2015 and beyond. Volunteers need to be good listeners and respectful of others' views, they are also required to attend a free 3 day advocacy training course – our next course is on 19, 20 and 27 February 2015.**

**Feedback from a client who benefited from OA advocacy support - “Gave me confidence, someone on my side. He was a good lad.”**

**To request the form to become a Volunteer Advocate for Oxfordshire Advocacy or to find out more please contact us by:**

**email: [pat@oadg.org.uk](mailto:pat@oadg.org.uk)**

**telephone: 01865 741200 - Pat**

**Please visit our website [www.gettingheard.org](http://www.gettingheard.org) for more info or to make a donation.**



## NEIGHBOURHOOD WATCH

Police Phone No. 101

Crimestoppers No. 0800 555111

February 2015

Trading Standards No. 0845 0510845

The Lions Clubs "MESSAGE IN A BOTTLE" by request.

The small plastic pot contains a form to be filled in and two emergency green cross stickers. It is for anyone of any age who is on regular medication.

The form explains the scheme, how it works and what you have to do.

It is supplied free by the Lions Club, delivered through Neighbourhood Watch Personal details, medical history and medication, doctor's surgery, emergency contact people, information regarding pets and who is to look after them and any other relevant information.

They recommend including a copy of your current prescription/s and a photo if possible, to confirm your identification.

One green cross sticker is put inside the front door, the other is placed on the fridge door and the pot and contents in the top of the fridge door.

The emergency services know and understand the scheme, they check the pot for medical details if immediate medication is required, if the person is sent to hospital the pot is sent with them. Considerable time and sometimes life can be saved.

It is very important to keep the information up to date.

If you would like a pot please phone Mollie Mulley 780629.

Recently a dog was removed from its owners' home. Please remain aware and observant and if you see anything suspicious please call the police with as much detail as you can, phone 999 for immediate attention or 101.

Maths Tuition places  
available from September  
Experienced Maths Teacher  
based in Sibford Ferris available  
to tutor pupils in Year 6 and  
Secondary School at all levels  
including preparation for GCSE,  
AS and A2 examinations.  
For further information call  
Helen on 01295 788 736  
or email  
helen\_earle@hotmail.com

### INDULGE IN LUXURY SKIN CARE TREATMENTS IN THE COMFORT OF YOUR OWN HOME.

Tropic Skincare is a cruelty- free,  
Vegan, and 100% natural and proudly  
British Skincare Company.

Hold a Tropic Pamper experience and as  
the hostess you will be lavished with  
luxury treatments. You will get a FREE  
spa Facial from our Senior

Ambassador Vanessa and 15% of the  
value of sales on the night to spend on  
any of our products for yourself.

To book a date or if you have any ques-  
tions call 07967 737469 or email  
pamperwithtropic@gmail.com

# ART EXHIBITION & CRAFT FAIR

Sibford Gower Endowed Primary School

Sat 7th and Sun 8th March 2015

10.30am - 4.30pm

More than 200 artworks by national and local artists

All day cafe

Quality Craft Stalls

Children's Craft Workshops

For more information please contact:

Sibford Gower Primary School PTA - [sibfordprimarypta@gmail.com](mailto:sibfordprimarypta@gmail.com)

Sibford Gower Endowed Primary School

Acre Ditch, Sibford Gower, Banbury OX15 5RW

**For Lawn  
Mowing and  
Strimming  
Call Gerry  
01295 780735.  
Thank You.**

## GODSWELL NATURAL THERAPY CENTRE

Godswell Lodge, Church Street, Bloxham, OX15 4ES  
Tel: 01295 722788

\*\*\*\*\*

Acupuncture ; Body & Face Therapies ;  
Bowen Technique ; Chiropody/Podiatry ; Cognitive  
Behavioural Therapy (CBT) ; Continence Advice  
(for women and men) ; Counselling ; Cranio-Sacral  
Therapy ; Homeopathy ; Hypnotherapy ; Lymphatic  
Drainage Massage ; Massage (inc deep tissue, hot  
stone and Indian Head) ; McTimoney-Corley Spinal  
Therapy ; Nutritional Therapy ; Yoga ; Reflexology  
& Remedial Massage

\*\*\*\*\*

*Fully qualified and professional therapists*

See website for further details:-

[www.bloxhamsurgerv.co.uk](http://www.bloxhamsurgerv.co.uk)

(follow the link to Godswell NTC) --

## FARMHOUSE BED AND BREAKFAST GRANGE FARM, SWALCLIFFE

*Enjoy warm hospitality & peaceful  
surroundings in our comfortable*

*18th C Farmhouse*

**CONTACT BARBARA TAYLOR  
TEL.01295 780206 or 0771 2895728  
[WWW.swalcliffegrange.com](http://WWW.swalcliffegrange.com)**

Contributions for the  
March  
Sibford Scene  
to the Editor by  
February 17th







## Sibford WI Report - Meeting 13th January 2015

It was disappointing that at the start of the New Year our speaker, Mr Dave Talbot, who was booked to give a talk on "Modern India" failed to arrive. However, this gave us a longer business session to discuss the many events coming up in 2015, it being the WI Centenary Year. The Baton will pass through our part of the Country on 18th April. The National AGM is at the Albert Hall, London on 4th June and a Banner Parade and Service will take place on 15th September at Christchurch Cathedral, Oxford. Names were taken of those wishing to attend the OFWI Annual Council Meeting at Oxford Town Hall on 24th March when the main speaker will be Lucy Worsley.

In the absence of a speaker we also had more time to enjoy tea and a selection of delicious cakes served by Val Powell and Valerie Taylor. Lynda Conway ran a brain testing quiz on "Identifying Shop and Outlet Logos" from pictures showing only a small section of each. Jan Warner organised the raffle with lots of pleasing donated prizes.

Members judged the competition for an item of Indian style jewellery and Glennis Hardman's pendant (given to her by her Indian pen friend) received the most points with Kathleen Winter second and Mary Hill and Jan Warner joint third.

Tuesday, 10th February is the date of our next meeting and there will be a talk from a representative of Guide Dogs for the Blind. Competition - A Dog Picture or Photograph. Visitors welcome - 2pm Village Hall.

Glennis Hardman

---

### Annual Closure of the permissive paths at Green Acres

We will be closing the paths at Green Acres on 10th February  
for 24 hours only, as usual.

# LETTERCARVE

.COM

HAND-CARVED HARDWOOD SIGNS FOR THE HOME AND WORKPLACE.  
SUITABLE FOR HOUSES, SCHOOLS, ESTATES, FARMS, STABLES, KENNELS, OFFICES.

**MADE LOCALLY IN SIBFORD GOWER.**

Church Services

Society of Friends  
Roman Catholic Mass

Sunday at 10.30 am  
Wroxton Sunday at 9.00 am  
Brailes Sunday at 11.30 am  
Hook Norton Sunday at 10.30 am

Baptist

Holy Trinity Church

Services in February

Sunday 1st 10am Benefice Eucharist in Broughton  
4.30pm Family service and Afternoon Tea in Sibford  
Sunday 8th 9.30am Holy communion  
Sunday 15th 9.30am Holy Communion  
6pm evening Prayer  
Wednesday 18th Ash Wednesday 9.30am Holy Communion in Epwell  
8pm Holy communion in Tadmarton  
Sunday 22nd 9.30am BCP Communion  
6pm Evening Prayer

Services in March

Sunday 1st 10am Benefice Eucharist in Sibford  
Monday 2nd 12.30pm Lent Lunch @ The Rectory. Soup bread, fruit. Collection for Christian Aid. All Welcome any time between 12.30pm and 2pm (preferably not all at once!!!)



**RED HORSE VALE LTD.**

All Types of Fuel, Coal, Smokeless, Gas,  
Logs, Kindling, Barbecue Needs  
Central Heating Oil, Oil Tanks & Coal Bunkers  
Landscape & Building Materials, Garden Centre &  
Garden Supplies. Farm & Country Sundries  
. Equestrian Products, Horse & Pet Feeds  
Open: Monday - Saturday 8am - 5pm  
Windmill Farm, Banbury Road (A422),  
Oxhill, Warwickshire CV35 0RP  
Tel: 01926642832  
Fax: 01926 642 853

*PC problems*

*Get IT sorted*

- ◆ *Qualified PC technician,*
- ◆ *Expert advice,*
- ◆ *Competitive rates,*

*[www.oxoncomputers.co.uk](http://www.oxoncomputers.co.uk)*

*Get IT sorted*

**Tel Dan: 01295 788766**



# Sibford Bus Services

## Cherwell Rural Dial-A-Ride Scheme

A mini bus with tail-lift to take **elderly or disabled people** and escort to Banbury (max fare £1.60) Door-to-Door service. Book at least one day in advance. Operates on Wednesdays & Thursdays. Phone 263777 for details. BCTA also takes bookings for groups of 8 or more on a weekly/monthly basis (Wednesdays & Thursdays) to and from Banbury. Tel; 263777

Stagecoach – Timetable commencing 31<sup>st</sup> May 2009  
Mondays to Saturdays (No services on Sundays or Public Holidays)

### Bus 50A. From Banbury towards Stratford-upon-Avon

Banbury, Bus Station	08.30	10.55	12.45	14.26	16.05	17.10	18.10
Sibford Ferris, Cross Roads	08.52	11.17	13.07	14.48	16.27	17.32	18.32
Sibford Gower, School	08.55	11.20	13.10	14.51	16.30	17.35	18.35
Shipston,	09.15	11.40	13.35	15.11	16.50	17.55	18.55
Stratford on Avon, Wood St.	09.40	12.09	14.04	15.40	17.19	18.24	19.24

### Bus 50A. From Stratford-upon-Avon towards Banbury

	NS					Sch Hols	Term time	
S on A, Wood St	06.20	07.10	09.05	11.10	13.10	15.10	15.24	16.24
S G, School	07.04	07.55	09.56	11.56	13.56	15.56	16.10	17.14
S F, Cross Roads	07.07	07.58	09.59	11.59	13.59	15.59	16.13	17.17
Ban, Bus Station	07.28	08.25	10.21	12.21	14.21	16.21	16.35	17.39

NS = Not Saturdays

All buses will operate low floor wheelchair accessible vehicles.

For complete details of all the stops that are served by service 50A, timetables are obtainable from the Tourist Information Centre in Castle Quay, Banbury.

Fares:-

Sibford Ferris & Sibford Gower to Banbury: Single £2.80 (Child£1.25)  
Return £5.25 (Child £2.35)

Sibford Ferris & Sibford Gower to Stratford: Single £4.30 (Child £2.85)  
Return £6.30 (Child £4.20)

Unlimited travel Cards are available for 1, 7 or 28 days but are regional and need to be bought in advance. Contact the Stagecoach sales office in Stratford tel; 01789 412680 for more details.

## Calendar of Events

### February

- Tue 3rd Friendship Club - This years programme p3
- Tue 10th Paths at Green Acres Closed. P21
- Tue 10th W.I. - Guide Dogs for the Blind. P21
- Wed 11th Mobile Library in the Sibfords (2.40-4.10pm)
- Tue 17th Deadline for contributions to the February Sibford Scene p20
- Thu 19th Sibfords Society Social Village Hall 7pm p14
- Tue 24th Village Hall Film Night p4
- Wed 25th Mobile Library in the Sibfords (2.40-4.10pm)

### March (part)

- Mon 2nd Lent Austerity Lunch at the Rectory p22
- Fri 6th Sibford School Open Morning. P12
- Sat 7 & Sun 8 Primary School Art Exhibition. 10.30 - 4.30 p20
- Wed 11th Mobile Library in the Sibfords (2.40-4.10pm)
- Tue 24th Village Hall Film Night p4
- Wed 25th Mobile Library in the Sibfords (2.40-4.10pm)

Cover picture; Sibford Gower looking towards the pond

#### Sibford Scene

Editor; Adrian Lamb. Grounds Farm, Sibford Ferris. 780380

e-mail [adrian.lamb1@btconnect.com](mailto:adrian.lamb1@btconnect.com)

Advertising; Ivor Hopkyns, Elmridge Farmhouse, Sibford Gower,

Banbury, Oxon. OX15 5RT. Tel 788367

e-mail [sallyandivorhopkyns@hotmail.com](mailto:sallyandivorhopkyns@hotmail.com)