

Sibford Scene

August & September 2014

No. 365

Church Coffee Mornings

10 - 12 noon on Saturday 16th August & Saturday 13th September

Horticultural and Produce Show

Saturday 23rd August 2.30 - 4.00 pm at the Village Hall

Show Entries - Village Hall 7 - 8.30 pm Wednesday 20th August

Historic Churches Ride and Stride

Saturday 13th September from 10am

Tashi Lhunpo Monks at the Village Hall

Sunday 14th & Monday 15th September

Musical Evening at the Village Hall

Saturday 27th September - Doors open 7pm

Village Hall AGM

Monday 29th September 7.30pm

Nature Notes

June 23rd It may be the same otter that was seen at Traitors Ford more than a fortnight ago that was seen in Sibford Ferris parish today. A few years ago I found what I thought were otter footprints by Lambs Pool and I understand that, unknown to me, there have been several otters seen since then so they could now be established in this area.

July 11th About a fortnight ago a badger trampled down the net that was covering our strawberries. It did not manage to eat many of them but since then we have not liked to eat them raw so we have made them into jam. We had anyway already picked the best of the crop.

July 14th The bumble bees nest in the eaves of our bungalow seems to have completed its lifecycle as there are no bees buzzing round any more. Our area of wild flowers is in full bloom but even on a nice day like this I could only see one bumble bee on them but lots of hover flies. A few years ago badgers used to dig out several bumble bee nests from the thick grass in our paddock each year but this year I have seen no sign of any being dug out which is ominous. A few weeks ago a bumble bee was sitting on a leaf and squirming in a way that made me think that it could be suffering from external parasites. It eventually flew away but it makes me wonder whether an infestation of mites could be killing them. I don't think bumble bees get the varoa mite which causes so much trouble with honey bees.

HOLMBY HOUSE

SIBFORD FERRIS

A stunning setting for special celebrations

From Buffets to Gourmet Dinners

Formal dining for large groups

Garden parties Business meetings

Wedding receptions

Luxurious B & B

Self-catering accommodation

Tel/Fax: 01295 780104

www.holmbymhouse.com

Sally.wass@btinternet.com



BESPOKE DESIGN SERVICE FOR
CUSTOM MADE FURNISHINGS

Curtains, Blinds & Cushions

Loose covers

Headboards & bedspreads

Curtain poles & tracks

New Sofas & chairs & reupholstery

Lampshade making

01295 788145

info@annwoolgrove.com

www.annwoolgrove.com

Oxfordshire Historic Churches Trust

Sponsored Ride and Stride

Saturday, 13th September 2014

Ride and Stride details and sponsor forms are also available from Arnold Lamb, Back Acre, Sibford Ferris (780357) and Peter Hardman 780391
hardman214@btinternet.com or email the editor for more details.

The challenge is to cycle or walk between places of worship and raise funds through sponsorship to support the work of the Trust and your local Church, Chapel or Meeting House. It is always an enjoyable event with many churches providing a warm welcome and refreshments. (Hempton have the reputation for fantastic cakes). There will be a group from the village cycling so if anyone would like to join us please contact the editor. Don't be put off by the thought of cycling big distances - just remember that it is only a couple of miles to the next church!

The Ride and Stride is also an effective way of raising funds for our church as 50% of the sponsorship money (excluding gift aid) comes straight back to the church if it is designated by the Striders and Riders.

Sibford Methodist Chapel

Are there any older members of the village who might know of relatives of anyone buried in the graveyard at the Chapel. It would be very helpful if they could let me know as the gravestones are illegible.

Kath Winter 780461

PIT STOP CATERING

Sibford School Car Park
Every Tuesday evening
between 5.30 and 8 pm.

With

FISH&CHIPS
SOUTHERN FRIED
CHICKEN & CHIPS

PIE & CHIPS

PLUS a "Special Meal" every week

PILATES IN SIBFORD

Madeleine Wilson M. Sc, Mat &
Studio Master Teacher

Offers

Bespoke One to One
and Duet sessions

Training on Specialised Pilates
Equipment

Reformers, Chairs, Barrels
& Cadillac & Small Group

Matwork Classes

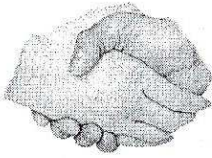
For all Levels from Beginners to
Advanced

Tel: 01295 780279

Mob: 07905 953300

E:mwl@linuxwaves.com

www.pilatesinsibford.co.uk



Friendship Club

The next 2 months of entertainments are as follows.
Tuesday August 5th one of the Memory Boxes This one is called 'Lotions and Potions'

The trip on Tuesday August 19th is to Thrupp for a carvery lunch.

On September 2nd the Speaker is yet to be confirmed and on September 16th we will have a cream tea on the train from Toddington.

Any information on the above trip will be given at the Club meetings on the 1st Tuesday of the month in the Village Hall.

Victoria Smith
MASSAGE THERAPIST
@ Serenity, Sibford Gower
*"Life takes it out of you, but
Massage puts it back"*
07974 231571

Over the August bank holiday Kit Lamb will be completing the Isle of Wight Challenge - 106km in 24 hours on foot, circumnavigating the Island. I am raising money for Great Ormond Street Childrens Hospital and would appreciate any donations. Search Kit Lamb on justgiving.com or send to the Editor. Many thanks Kit Lamb

Sibford Stores & Post Office, Sibford Ferris

OX15 5RG

Telephone 01295 788317 / 788348

YOUR LOCAL CONVENIENCE STORE AND NEWSAGENT

We deliver newspapers and magazines 7 days a week to all the surrounding area. Place your regular order today, whether for 1 day a week or 7. Always a wide selection of magazines available, specialist titles available to order.

Chilled & Frozen foods, groceries, cigarettes, beers, wines and spirits, fresh fruit and vegetables, pet foods, household goods, toiletries & medical requisites and lots, lots more.....

Health Lottery, Photocopying, fax service, dry cleaning

We will also undertake your mailings for you, just ask.

Always an excellent selection of Hook Norton bottled beers in stock.

Telephone your grocery order for free local delivery.

OPENING HOURS

Monday to Saturday 7.30am to 7.30pm

Sunday 7.30am to 4.00pm

**PLEASE SUPPORT YOUR LOCAL POST OFFICE, THERE ARE LOTS OF
PRODUCTS AND SERVICES AVAILABLE ON YOUR DOORSTEP**



Use of Sibford School Playing fields

The school playing fields have become an increasingly popular area for groups of young people to play football and other sports during late afternoon/early evenings and at weekends. Whilst we encourage young people to be active, these grounds are primarily for the use of pupils attending Sibford School. The school has a responsibility to ensure the safeguarding of these students at all times, in accordance with the regulations for educational establishments, therefore, with immediate effect, it has been agreed that the school playing fields are no longer available for casual use.

If groups would like to book the use of a football pitch or other areas, they can do so by contacting Sibford School on 01295 781200 or by emailing facilities@sibfordschool.co.uk. Anyone who has not booked will be asked to vacate the premises.

This ruling does not affect the Multi Use Games area which can continue to be used during the times specified on the school notice board.

We thank you for your cooperation.

Peter Robinson
Business Manager



The Firs Garage

www.firs-garage.com

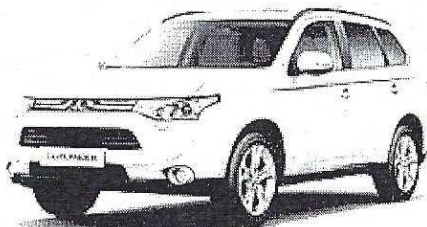
Family business established 1960



SSANGYONG

Tel: 01608 737349 / 737641

Hook Norton, OX15 5DD



All-new Mitsubishi Outlander 4x4

Extensive range of new
and used cars & 4x4's:
petrol, diesel & electric
Part exchange welcome

Service
MOT Parts
Bodyshop
Fuel Shop

We look forward to seeing you, the kettle is on!

**ALL MAKES
SERVICING**
COMPETITIVE PRICES



1914-1918 in the Sibfords

Much has been written and broadcast this year about the history of the First World War during this 100th anniversary year of the outbreak of the hostilities which affected the lives of so many people across the world. During this horrific war the total of military and civilian casualties was over 37 million – 16 million deaths and over 20 million wounded. These huge numbers ranked the First World War among the deadliest conflicts in human history.

The Sibfords played their part and I am currently researching life in our villages during these four years. To mark the 100th anniversary on 4th August 2014, I have summarised some of the facts which have already come to light about the lives of the villagers who lived and worked here during those war-torn years:

- ☐ The population of the Sibfords was around 650 in 1914
- ☐ 88 men and 2 women from the villages served in the British Armed Forces
- ☐ 10 men gave their lives in the service of their country
- ☐ 80 villagers returned safely
- ☐ The Primary School, which had between 80 and 90 pupils, was closed on several occasions due to outbreaks of measles, diphtheria and influenza
- ☐ The school children picked 1ton 6cwts and 94lbs of blackberries which were taken to Bloxham Station to be sent for jam making for the troops

- **Bespoke bathrooms, kitchens and carpentry**
- **Fitted furniture**
- **Plumbing and electrical works**
- **Home improvements and renovations**

Hugo Seely

Trading in the Sibfords since 1992

From concept to completion

*Exceptional value,
exceptional service*

T: 01295 780355

or 07773 319239

E: hugo.seely@gmail.com

Excellent references

□ Following a public meeting in October 1914, the villagers agreed to 'take a cottage and support a Belgian Refugee family for as long as seems necessary'

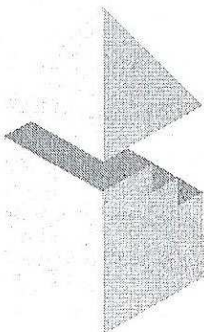
□ Regular donations of between 1 and 3 pence a week were collected and used to support two families who came to live in Burdrop. Monsieur de Vries and Monsieur Poppe were cousins and diamond cutters and polishers who fled from Antwerp during the German invasion of Belgium. With their wives and four young sons they were given a home, furniture and supported financially by the villagers

□ The 9 Trustees of the Town Estate Charity met regularly throughout the war years. They provided prizes to the village school for Scripture, Horticulture and Sewing. They supported the Rev Moxon's Clothing Fund, made allocations of coal and set up an account at the Co-op to pay for soup and Bovril for needy residents in the Gower and Burdrop

□ Sibford cricket club continued to play local matches although some of their players were serving abroad

I plan to continue my research and would love to hear from anyone who can add any local stories, photographs or memories from those years. I am grateful to those who have already helped in any way, especially Judith Weeks who has visited the War Graves in France and who has photographed and recorded the graves of the local men who were buried there. Bob Lamb has shared his memories of life on the family farm when his father and three brothers all served on the Western Front in different ways. Fortunately, they all returned safely to their families.

If you can help me in any way with further information, photographs or family memories please get in touch with me: Maureen Hicks – Tel: 780 259 email: maureen@hicks-sibford.co.uk



DAVID BOVILL

ARCHITECTURAL AND PLANNING SERVICES

Providing a personal service from Design through Planning and Building Regulations, and beyond if required

Specialising in Extensions, Loft Extensions and Listed Buildings work

Please phone or e-mail to arrange a free initial consultation

01869 347906

davidbovill@btinternet.com



Sibfords Society, July and September 2014

Since this edition of the Scene went to print, a large group of Sibford Society members plus friends will have been, on Thursday 17th July, to Swinbrook, a small village near Burford, home of the beautiful Mitford sisters, to hear a talk about their lives and to see where most of the family are buried, in the churchyard of St Mary, Swinbrook. More on this trip will follow in the next Sibford Scene.

On 18th September we will have a talk by Mark Davies on 'Artists in Wonderland: Alice and the Pre-Raphaelites.' Thomas Combe was superintendent of the Oxford University Press throughout the 1850s and 1860s. With his wife Martha, he played a key role in promoting the Pre-Raphaelite Movement, by encouraging artists such as Milais, Holman Hunt and Rosetti to stay with them in Jericho, close to the inspiring vistas of Port Meadow. The couple also facilitated the publication of Lewis Carroll's *Alice's Adventures in Wonderland* and enabled Carroll to meet and photograph these famous artists. The talk begins at 8.00p.m. in the Village Hall, Sibford; doors open at 7.45 p.m.

Micks Sticks

Fire Lighting Wood For Sale

£3.00 per big bag

Call in anytime and ask for

Mick Canning, at

The Old Malt House,

Sibford Ferris

Tel; 01295 780321

For Practical Garden Assistance

Please contact Nick Taylor

07425136992

johnnicktaylor31@gmail.com

01295 680206

01295 788397

All types of garden
work undertaken



OPUS Property Services Ltd

01295 780652

07816592124

All aspects of property maintenance
and refurbishment undertaken from
replacement light bulbs and tap
washers to new ceilings and floors.

Plumbing, tiling, wood flooring, floor
renovation, under floor heating,
plastering, electrics, decorating, damp
proofing, carpentry, locks, drains,
kitchens, bathrooms etc

Call us or visit our website for
more information:
www.opusps.co.uk



SWALCLIFFE SUNDAY FUN DAY



Sunday 24th August 2014

● Childrens challenge

● Space Hopper races

● Egg & Spoon

● Wellie Wanging

● Dog Obstacle Course

● Tug of war

● Teas, cakes and Beer

● Music

● Old Fashioned
Punch & Judy Show

● BBQ

Starts 2pm

At Taylors Fields, Park Lane, Swalcliffe

Join us for an afternoon of **FUN** for all the family

We'd like to challenge Tadmarton and The Sibfords to join us for the Tug or War challenge. All welcome, so if you know of any other village team let them know.



ALSO

Please bring your dogs along and let them join in the fun at the Dog Obstacle Course.

For more information contact:

Della on 01295 780292

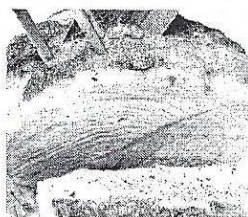
email: delladella@hotmail.co.uk

Entry Fee £2 Adults & £1 per child –

This includes participation to all the games

Proceeds going to The Swalcliffe Village Fund

www.swalcliffe.org



Tashi Lhunpo Monks

Eight Tibetan monks from the Tashi Lhunpo Monastery are coming to Sibford in September!

They will be arriving on Sunday 14th September when they will begin to make a sand mandala in the small village hall. There will be a workshop in the large hall for those wishing to learn about the sacred music and dance of this ancient culture and see musical instruments from the Tibetan Tantric tradition. That evening there will be a performance and the next day, after a morning of school visits, the monks will conduct the destruction ceremony of the mandala.

Tickets will be on sale soon. Look out for the posters!

For more details on the Tashi Lhunpo monks go to Tashi Lhunpo UK Trust-Home

Bed & Breakfast

AGDON FARM

Nr Brailes

**Comfortable rooms
in old stone farmhouse**

Tel: Maggie Cripps

01608 685226

Holiday Let

For 1 or 2 people

**In quiet, self-contained
annexe**

Contact Judy Abbott

01295 780731

Holiday apartment overlooking
Lake Trasimeno, Umbria, Italy.

Self contained ground floor apartment; open plan lounge/ kitchen /diner, 2 bedrooms, 2 bathrooms, shared use of private garden/pool, panoramic lake views, close to bars, restaurants, shops and lake ferry. See us on

www.ownersdirect.co.uk
property ref IT12664

Or for further details; please
contact local residents:-
linckchick@gmail.com

The weather, although not perfect for a garden party, was at least fine so that members were able to be outside and appreciate Mary Hill's beautiful garden in Bloxham. Before tea was served a short business meeting took place. Secretary Lynda Conway read out an interesting and detailed report written by Eileen Johnson of Bloxham WI on the NFWI Annual Meeting in Leeds on 7th June. Four thousand five hundred attended and the resolution 'Increasing Organ Donation' was passed in favour with a high majority vote. Sibford Members, who are going to the lunch on 14th August at the RSC Rooftop Restaurant, Stratford upon Avon, need to be at the Village Hall car park at 11am. A delicious tea, with cakes baked by the Committee, was much enjoyed at round tables set with attractive china. President, Glennis Hardman, thanked Mary for her lovely hospitality and presented her with a gift token and an arrangement of flowers.

There will be no Meeting in August. Instead of the Meeting scheduled for 9th September there will be an Afternoon Tea later in the month. Members will be advised of the venue, date and time.

Glennis Hardman

Serenity Beauty Salon

Gautherns Barn

Specialists in Guinot Hydradermie Facials, OPI Manicure and pedicures, Waxing, Tinting and removal of skin blemishes

Jane Iredale Mineral Make-up and Environ Skincare

Winter Opening: Wednesday and Friday 9.30am-7.00pm

Call Jo Plumley 01295 788463/07891 220275

INDULGE IN LUXURY SKIN CARE TREATMENTS IN THE COMFORT OF YOUR OWN HOME.

Tropic Skincare is a cruelty-free, Vegan, and 100% natural and proudly British Skincare Company.

Hold a Tropic Pamper experience and as the hostess you will be lavished with luxury treatments. You will get a FREE spa Facial from our Senior

Ambassador Vanessa and 15% of the value of sales on the night to spend on any of our products for yourself.

To book a date or if you have any questions call 07967 737469 or email pamperwithtropic@gmail.com

PROM SURPRISE

Attendees at Sibford School's year 11 Prom got a big surprise when reality TV star Ollie Locke popped by to say 'hi'.

The Made in Chelsea star was a pupil at the school from 2003 – 2005, and agreed to come along after receiving an invite from pupil Alice Abrey, a member of the Prom organising committee.

"I emailed his agent to see if would like to come along but heard nothing," said Alice. "Then on Wednesday evening I got a call on my mobile and it was from Ollie himself saying he'd love to join us. I couldn't believe it. I told my fellow organisers Becky and Jade

but we kept it a secret from everyone else so it was a big surprise on the night."

Ollie chatted with pupils and teachers and spoke about his time at the school and how he had enjoyed filming Made in Chelsea. He was also reunited with his GCSE art project 'Depiction of Water' which he had never collected from the school.



Colour Analysis by Annie Broe

I will show you which colours are best for you.

Wearing the right colour is an easy and effective way to improve your appearance.

You will instantly look more radiant, younger, healthier and will improve your confidence.

Colours are very powerful – use this power to your advantage and look fantastic!

Gift Vouchers available – the perfect present

For a personal colour analysis or for more details please call me on

01295 780637 or 07930 398151 or email annie4colourandstyle@gmail.com

"We found his folder in the art room and thought it would be good to give it back to him," said Alice. "Quite what he thought about it I'm not sure but this time he did at least take it away with him!" Ollie Locke is pictured with (from left to right) year 11 students Becky Sleath, Alice Abrey and Jade Spencer.

Senior School Open Evening

Sibford will be holding a Senior School Open Evening on Thursday 25 September starting at 6pm. The event will include a presentation from the head Michael Goodwin, tours of the senior school and refreshments. There will also be an opportunity to chat with some key members of staff.

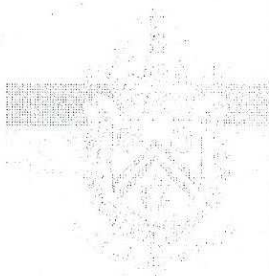
Summer Holiday Activity Club

Sibford School's popular Fun in the Country holiday club continues until Friday 22 August (week days only). Children can enjoy a range of activities including swimming, crafts, sports and cooking. Cost is £28 per child per day. To book a place call Elspeth Gregory on Banbury 781203 or Ali Bromhall on Banbury 781216 or email: funinthecountry@sibfordschool.co.uk. Pre-booking is essential.

Damian and Debbie

Welcome you to enjoy the atmosphere
of our 16th century thatched Inn.

- Bar and a la carte menus available lunch & dinner.
- Excellent Sunday lunch - to suit the weather!
- New food and wine takeaway menu.
- Wednesday steak and wine night £15.00
- Selection of fine wines and real cask ales.
- Happy hour and a half every Wednesday evening!
- Gift vouchers available.



THE
WYKHAM
ARMS

Temple Mill Road
Sibford Gower
Nr. Banbury
OX15 5RX

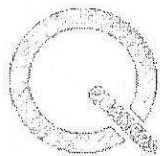
Tel: 01295 788808 / 07

Take a look at our new
website
www.wykhamarms.co.uk

email:
info@wykhamarms.co.uk

Opening Times
12.00am-3.00pm
6.00pm-11.30pm

Bar only Sunday Night
Closed all day Monday
(Except bank holidays)

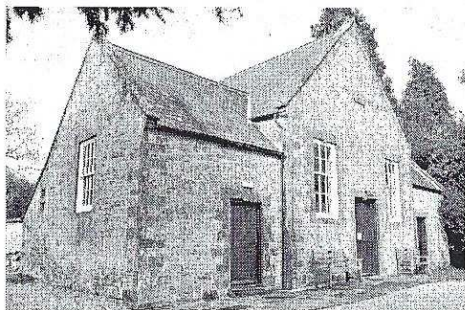


"Let your life speak" (Advices and Queries 27) is the theme this year for
National Quaker Week, 4-12 October 2014

The Religious Society of Friends (Quakers) at Sibford Gower Meeting
welcomes you to join us for any of the following:

Meeting for Worship in Sibford Gower Meeting House, Temple Mill Road Friday 3rd
October 3.30-4pm, a short introductory Meeting for Worship, pupils from the school and
Meeting will be present

Sunday 5th October – Meeting for Worship 10.30-11.15 am.



Wednesday 8th October – Evening
Meeting for Worship 6.00-6.45pm (followed
by drinks and a talk, do feel free to come to
either or both)

Sunday 12th October – Ecumenical
Meeting for Worship – Sibford Churches to-
gether 10.30-11.30, am with Children's Meet-
ing at 10.30 am for younger attenders

Need a pamper?

I'm a beauty therapist fully trained to NVQ
level2 and am currently learning level 3. I offer a
wide range of beauty treatments from a basic
eyelash tint to Gel nails and spray tanning.

Luxury treatments at affordable prices.

All treatments done from within my own beauty
room. For any details or prices please don't
hesitate to contact me

01295780705 / 07854016463

Holliewallington@hotmail.com

**LOGS, HAY,
STRAW**

**Garden Manure
Half pigs for the
freezer (limited)**

**Antony Sabin
01295788421**

Richard Wallington

Builder

Block Paver Drives a Speciality

Also Extensions, Patios

Fencing etc.

High Quality Work, Free Estimates

01295 780705 07743 932545

(Sibford Gower) (Mobile)

BIKE REPAIRS & SERVICING



General servicing
Repairs

Cleaning & maintenance

All makes and types of bike

Reasonable rates, speedy service

For all your bike repair needs, call: 01295 780355

Other events Free Fair Trade afternoon tea on Saturday 4th October from 3-5pm in Sibford Gower Meeting House, the Fair Trade stall will also be open for sales.

A display about conscientious objectors during World War 1 will be on show throughout the week for viewing at any time in Sibford Gower Meeting House.

Find out more about Quakers and the history of Quakerism on Wednesday 8th October at 7pm in Sibford Gower Meeting House, with Zoë Connor (Head of RS at Sibford School).

Thursday 9th October Banbury Quakers are hosting their 3rd Sustainability Forum from 6.30 – 9.30pm at the college in Banbury (Now Banbury and Bicester College, was Oxford and Cherwell Valley College). There will be a free light buffet beforehand and a retiring collection.

Chair:

Dr Paula Clifford, formerly Head of Theology at Christian Aid and the Archbishop of Canterbury's adviser on climate change

Speakers:

Florence Jupp, Kids Company

Marion Holmer, WRAP

Sabrina Groschel, Ethical Money Churches Project from The Ecumenical Council for Corporate Responsibility

Mike Pollard RSPB

For more information on any of the above please contact

zconnor@sibfordschool.co.uk

Hawthorn livery

Hawthorn stud
South Newington
Ox15 4JP

We offer Full, Part & D.I.Y
Secure tack room & CCTV
50 x 50 flood lit ménage with
show jumping equipment
Drink making & toilet facilities

4 Large paddocks

Places now available

Call in for a chat

or phone for more details

01608 683911 or 07798764580



THE VILLAGE SHOP HOOK NORTON

NATIONAL LOTTERY

Grocery - Greengrocery - Bakery
Wines - Spirits - Confectionary
Newspapers - Magazines - Cards
Video Rental - Bottled Gas

Open Monday to Friday

8 am to 8 pm

Saturday 8 am to 8 pm

Sunday 8 am to 6 pm

Telephone: 01608 737245



Sibford Horticultural Society

On Tuesday 10th June 23 members had a visit to Chastleton Glebe, the home of Prue Leith, the famous gourmet cook and novelist. The approach to the house is through an avenue of old and noble trees, which ring the entire garden. A large terrace, with roses and pots of geraniums and nepeta, is the place to enjoy the fabulous view across a wildflower meadow to a lake and then up to the hills. A bright red Chinese bridge crosses to the island in the lake, with red pagoda, and there was some eastern influence in some of the many statues in the garden. A long tunnel of roses was just coming into flower. Some magnificent cold frames made us all jealous, as they were filled with broccoli and cabbages, lettuces and spinach, all of which would win at a flower show. The original walled vegetable garden is now an ornamental one, with box parterres filled with different perennials - notably some gorgeous foxgloves. It was a grey evening, but the rain held off until we had all seen the garden, and as the raindrops fell, we were all ushered into the splendid house, and thoroughly spoilt with tea, coffee and platefuls of exceedingly delicious cakes and cookies.

Cotswold poultry

Hawthorn stud
South Newington
Ox15 4jp
Full range of p.o.l hens
Fully vaccinated
Free wing clipping
Advice on health & care
Holiday stay for your hens!
Call in or phone sue for more
details
01608 683911 or
07769153351
Email
cotswoldpoultry@gmail.com

Our Horticultural and Produce Show is on Saturday 23rd August, 2.30 - 4.00 pm at the Village Hall. You should have received the schedule with last months Sibford Scene, if not please contact Helen Lamb (780380) or Gillian Soden (780543) to get another copy. Entry night is Wednesday 20th August 7.00 - 8.30 pm in the small hall.

We can only have a show if you have a go

BY
HAZEL V ROBINSON

GARDEN ART EXHIBITION


Where
Hopkin House
Lower Tysoe

When
August 30th
Sept 7th

Time
10.30am - 5.00pm

Cream teas
Coffees

In aid of
SHIPSTON HOME
CARER'S TRUST



WELCOME TO SIBFORD

If you are a new resident of Sibford and have not yet received a copy of the "Welcome to Sibford" booklet, please telephone Ivor Hopkyns on 788367 (Gower or Burdrop) or Nic Durrant on 788865 (Ferris), and a copy will be delivered to you. The information will help to make you feel at home - by acquainting you with the services, schools, clubs and societies that are currently active in the villages.



BED AND BREAKFAST

Buttslade House, Sibford Gower
offers supremely comfortable en suite
accommodation in the charming setting
of a tranquil English country garden.

Contact Diana Thompson

01295 788818

Or diana@buttsladehouse.co.uk

www.buttsladehouse.co.uk

C. A. Berger

Painting & Decorating
Interiors & Exteriors
Residential & Commercial
Carpentry Repairs
and
Property Maintenance

Mobile: 07875 212 315

Office Tel/Fax:
01295 738633

VILLAGE HALL NEWS

Many, many thanks to all who helped at the Fayre or donated time or items to help make it a success. We have raised about £1,300 [some expenses to come out of that] which will go into the Hall refurbishment fund.

FUTURE EVENTS

MUSICAL EVENING on September 27th, with Ilone and Matt to entertain us. Refreshments will be served during the interval, and a Bar will be available from 7pm. Tickets will be available in September. Look out for the POSTERS!

A BRIDGE DRIVE will be held on October 25th from 2pm to 5pm. Proceeds from this will go into refurbishment fund. More details in October Sibford Scene. Light refreshments available. -contact Joan on 780410 or Sally on 788367

VILLAGE HALL QUIZ is on November 22nd for teams of up to 6 people. Cost £7 per person which includes a light supper. The Bar will be open from 7pm. Give your team name to Muriel 780025 or Ginny 780373.

VILLAGE HALL ANNUAL GENERAL MEETING

This is planned for September 29th, starting at 7-30pm. This will be an opportunity to view the REFURBISHMENT PLANS that we would like to progress with. It is our aim to bring the hall up to date and for it to be as efficient and comfortable as possible, making it a pleasure for all to use.

LOST PROPERTY

Several items were left after the Fayre. If any of the following are yours please contact Muriel on 780025. Lime green fold-up chair/ dog lead / northern rock biro / child's pink sun hat / white sink drainer/ large yellow plastic box / and we still have a navy[spotted with white] umbrella left after the Dog Show.

BOOKING SECRETARY

If you want to book the hall, or need info contact Ginny on 01295 780373 or via thesibfords.org website.

Maths Tuition places available
from September
Experienced Maths Teacher
based in Sibford Ferris available
to tutor pupils in Year 6 and
Secondary School at all levels
including preparation for GCSE,
AS and A2
examinations.

For further information call
Helen on 01295 788 736
or email
helen_earle@hotmail.com

Holy Trinity Church

August 3rd at 10am the Benefice Eucharist in Sibford will commemorate the centenary of the start of WW1. There will be poems and different readings, some hymns and anthems appropriate for the special day, as well as our chance to pledge ourselves to work for peace throughout the world. Everyone is warmly invited to attend whether or not you are specially "churchy".

The church will, as always, be open the following day, the official day of remembrance, for your own quiet times.

Saturday August 16th there will be a Coffee Morning from 10am until 12 noon in church – good refreshments, some simple stalls, and chat and friendship; all welcome.

Again on September 13th there will also be a Coffee Morning.

Sibford Methodist congregation have looked favourably on our offer to have a Methodist Service in church once a Quarter; The first will be at 11am on Sunday October 12th and it will be HARVEST FESTIVAL, with offerings of tins and packets warmly welcomed for the Banbury Food Bank. Please be part of this ecumenical venture.

One further "Tim Wimbush Commemoration" – the Royal School of Church Music have included a Choral Evensong in Broughton at 6.30pm on Sunday September 14th to give thanks for Tim's musical ministry and include some of his favourite hymns etc. We are still recruiting singers for this event – but you are all welcome to attend either as singers or as congregation.

The Clock; last month I promised you all a leaflet about the clock and how you can help. The leaflet is on its way! But as most of you know, between the idea and the execution there's always a delay. Meanwhile the clock ticks and strikes but the hands don't move. Continued thanks to Tom Pratt for his ministry of winding and care – you all know how accurate the clock is!



QUALITY FISH DIRECT FROM GRIMSBY MARKET

Proprietor: T.P.Martin

Tel: 07812 361853

**Best fresh fish and shell fish to your
area direct from Grimsby on the
Lincolnshire coast**

**I'll be at Sibford Village Hall car park
EVERY MONDAY from
approximately 4pm till 5.30pm**

Miss 'T' Catering.

**Catering for events such as:
Anniversaries, Weddings,
Christenings, Birthday parties,
Funerals**

And private dinner parties.

~.~.~

Also available

Cutlery and Crockery Hire.

Contact Victoria Taylor on:

Mob: 07841 910037

Home: 01295 788924

The Sibfords Walking Group

11 August Route tba

1 September Note: 3 week gap Route tba

15 September Route tba

We leave Sibford Gower Village Hall car park at 10 sharp, sometimes on foot, sometimes driving to the start.

Dogs on leads when requested are very welcome.

Boots and walking poles recommended but not essential, though some routes are rough.

The routes are normally a circuit and take about 2 hours unless marked as short. Please email sebannister@gmail.com or phone 01295 780365 if you have any queries.

Sibford Cricket Club.

Annual Bert Gilbert Memorial Match, Sunday 3 August from 1.30pm

Come and join us for a relaxing afternoon of cricket and BBQ.

This annual event is played by Sibford cricket players only for the purposes of fundraising and enjoyment. A 40 over match will start at 1.30pm, there will be a raffle during the tea break and a BBQ throughout. We look forward to seeing you. Fine weather guaranteed!! Saturday 12th July Sibford v Silverstone

Sibford won the toss and batting first were all out for 106. with Mark Luker scoring 49 & David Brabham 21. In reply Silverstone finished 108-5 with Sam Brabham taking 1-12.

**For Lawn
Mowing and
Strimming
Call Gerry
01295 780735.
Thank You.**

GODSWELL NATURAL THERAPY CENTRE

Godswell Lodge, Church Street, Bloxham, OX15 4ES
Tel: 01295 722788


Acupuncture ; Body & Face Therapies ;
Bowen Technique ; Chiropody/Podiatry ; Cognitive
Behavioural Therapy (CBT) ; Continence Advice
(for women and men) ; Counselling ; Cranio-Sacral
Therapy ; Homeopathy ; Hypnotherapy ; Lymphatic
Drainage Massage ; Massage (inc deep tissue, hot
stone and Indian Head) ; McTimoney-Corley Spinal
Therapy ; Nutritional Therapy ; Yoga ; Reflexology
& Remedial Massage

Fully qualified and professional therapists

See website for further details:-

www.bloxhamsurgery.co.uk


(follow the link to Godswell NTC)



FARMHOUSE BED AND BREAKFAST GRANGE FARM, SWALCLIFFE

*Enjoy warm hospitality & peaceful
surroundings in our comfortable
18th C Farmhouse*

**CONTACT BARBARA TAYLOR
TEL.01295 780206 or 0771 2895728
WWW.swalcliffegrange.com**



Contributions for the
October
Sibford Scene
to the Editor by
September 16th

Fun in the Country HOLIDAY CLUB

**open to ALL children
aged 5 ~ 11 years**

at Sibford School

Sibford Ferris, Banbury OX15 5QL

NOW BOOKING FOR

Summer 2014

Monday 28 July ~

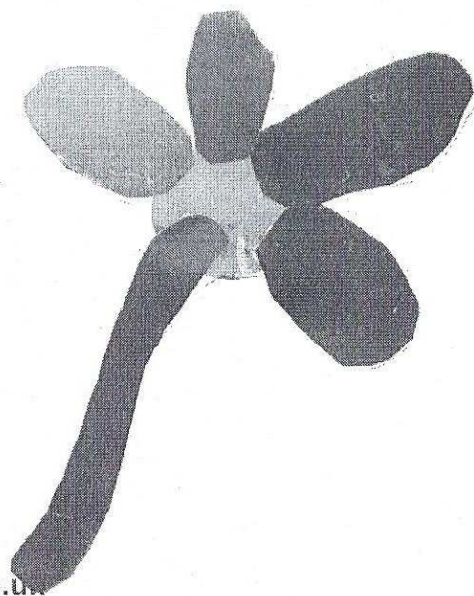
Friday 22 August 2014

**Arts & Crafts,
Music and Drama,
Sports,
Team Games,
Cookery,
Outdoor Activities,
Gardening,
Swimming
and much much more...**

**Cost: £28 per day.
To book a place call**

01295 781203

funinthecountry@sibfordschool.co.uk



Sunday

10 am

Church

Church Services

Society of Friends
Roman Catholic Mass

Sunday at 10.30 am
Wroxton Sunday at 9.00 am
Brailes Sunday at 11.30 am
Hook Norton Sunday at 10.30 am

Baptist

Holy Trinity Church

August

Sunday 3rd Benefice Eucharist in Sibford 10am

This Service will have quite a lot of material about the commemoration of the outbreak of World War 1 100 years ago

Sunday 10th – Morning Praise at 9.30am

Sunday 17th – Holy Communion at 9.30am

Sunday 24th – BCP Holy communion at 9.30am

And in September;

Sunday 7th – Benefice Eucharist at Epwell at 10am. At the start of this service some lovely new wooden gates in the churchyard, given by the Epwell Charity and the PCC in gratitude for Tim Wimbush's ministry, and designed along a special "Tim theme" will be dedicated

Sunday 14th – Morning Praise at 9.30am

Sunday 21st – Holy Communion at 9.30am

Sunday 28th – BCP Holy Communion at 9.30am



RED HORSE VALE LTD

All Types of Fuel, Coal, Smokeless, Gas,
Logs, Kindling, Barbecue Needs
Central Heating Oil, Oil Tanks & Coal Bunkers
Landscape & Building Materials, Garden Centre &
Garden Supplies. Farm & Country Sundries
Equestrian Products, Horse & Pet Feeds
Open: Monday - Saturday 8am - 5pm
Windmill Farm, Banbury Road (A422),
Oxhill, Warwickshire CV35 ORP
Tel: 01926642832
Fax: 01926 642 853

PC problems

Get IT sorted

- ◆ Qualified PC technician,
- ◆ Expert advice,
- ◆ Competitive rates,

www.oxoncomputers.co.uk

Get IT sorted

Tel Dan: 01295 788766

Glennis - owe £15.

Sibford Bus Services

Cherwell Rural Dial-A-Ride Scheme

A mini bus with tail-lift to take **elderly or disabled people** and escort to Banbury (max fare £1.60) Door-to-Door service. Book at least one day in advance. Operates on Wednesdays & Thursdays. Phone 263777 for details. BCTA also takes bookings for groups of 8 or more on a weekly/monthly basis (Wednesdays & Thursdays) to and from Banbury. Tel; 263777

Stagecoach – Timetable commencing 31st May 2009
Mondays to Saturdays (No services on Sundays or Public Holidays)

Bus 50A. From Banbury towards Stratford-upon-Avon

Banbury, Bus Station	08.30	10.55	12.45	14.26	16.05	17.10	18.10
Sibford Ferris, Cross Roads	08.52	11.17	13.07	14.48	16.27	17.32	18.32
Sibford Gower, School	08.55	11.20	13.10	14.51	16.30	17.35	18.35
Shipston,	09.15	11.40	13.35	15.11	16.50	17.55	18.55
Stratford on Avon, Wood St.	09.40	12.09	14.04	15.40	17.19	18.24	19.24

Bus 50A. From Stratford-upon-Avon towards Banbury

	NS					Sch Hols	Term time	
S on A, Wood St	06.20	07.10	09.05	11.10	13.10	15.10	15.24	16.24
S G, School	07.04	07.55	09.56	11.56	13.56	15.56	16.10	17.14
S F, Cross Roads	07.07	07.58	09.59	11.59	13.59	15.59	16.13	17.17
Ban, Bus Station	07.28	08.25	10.21	12.21	14.21	16.21	16.35	17.39

NS = Not Saturdays

All buses will operate low floor wheelchair accessible vehicles.

For complete details of all the stops that are served by service 50A, timetables are obtainable from the Tourist Information Centre in Castle Quay, Banbury.

Fares:-

Sibford Ferris & Sibford Gower to Banbury: Single £2.50 (Child£1.25)

Return £4.70 (Child £2.35)

Sibford Ferris & Sibford Gower to Stratford: Single £4.30 (Child £2.85)

Return £6.30 (Child £4.20)

Unlimited travel Cards are available for 1, 7 or 28 days but are regional and need to be bought in advance. Contact the Stagecoach sales office in Stratford tel; 01789 294155 for more details.

Calendar of Events

August

- Sun 3rd Bert Gilbert Memorial Cricket Match - Sibford School
- Tue 5th Friendship Club - Memory Box p4
- Mon 11th Sibfords Walking Group 10am from V. Hall p20
- Wed 13th Mobile Library in the Sibfords (2.40-4.10pm)
- Sat 16th Church Coffee Morning 10 - 12 noon p19
- Tue 19th Friendship Club outing to Thrupp p4
- Wed 20th Horticultural Show Entries - Village Hall 7 - 8.30 pm p16
- Sat 23rd Horticultural and Produce Show 2.30 - 4.00 pm p16
- Sun 24th Swalecliffe Sunday Funday p9
- Wed 27th Mobile Library in the Sibfords (2.40-4.10pm)
- Sat 30th to Sun 7th Sep Art Exhibition in Tysoe p17

September

- Tue 2nd Friendship Club p4
- Mon 8th Ferris Parish Council Meeting 7.45pm
- Wed 10th Mobile Library in the Sibfords (2.40-4.10pm)
- Sat 13th Church Coffee Morning 10 - 12 p19
- Sat 13th Historic Churches Ride and Stride p3
- Sun 14th & Mon 15th Tashi Lhunpo Monks at the Village Hall p10
- Tue 16th Friendship Club - Toddington p4
- Thu 18th Sibfords Society - Artists in Wonderland p8
- Mon 22nd Sibford Gower Parish Council Meeting - 8pm
- Wed 24th Mobile Library in the Sibfords (2.40-4.10pm)
- Thu 25th Sibford School Open Morning p12
- Sat 27th Musical Evening at the Village Hall 7pm p18
- Mon 29th Village Hall AGM 7.30pm p18

Cover picture; Friends School Picnic at Traitors Ford.

Sibford Scene

Editor; Adrian Lamb. Grounds Farm, Sibford Ferris. 780380

e-mail adrian.lamb1@btconnect.com

Advertising; Ivor Hopkyns, Elmridge Farmhouse, Sibford Gower,

Banbury, Oxon. OX15 5RT. Tel 788367

e-mail sallyandivorhopkyns@hotmail.com