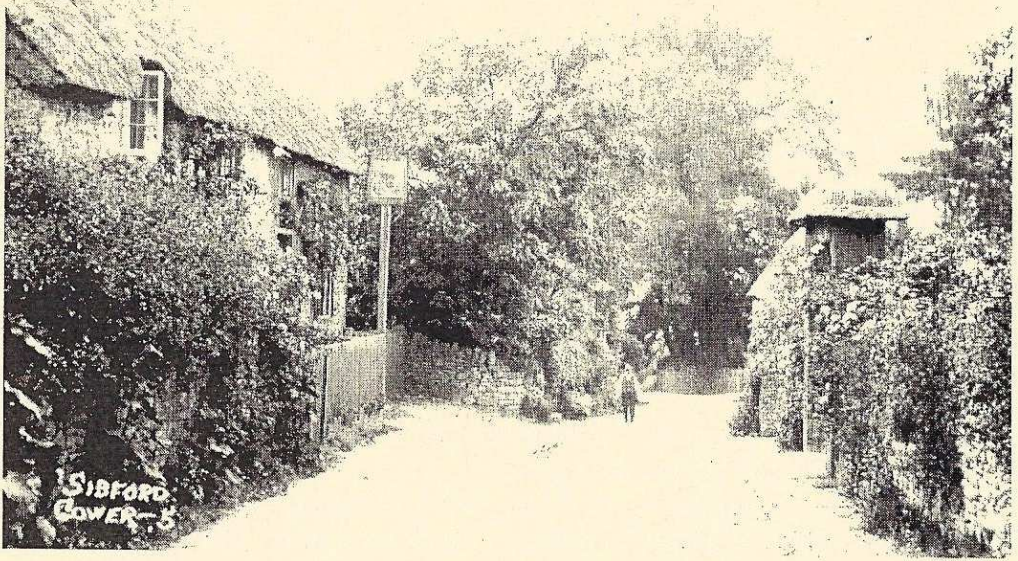


# Sibford Scene



July 2014

No. 364

## Birmingham Symphonic Winds

Saturday 5th July

Young at Heart concert at Swalcliffe Church 3pm

Summer Serenade concert at Swalcliffe Church 7.30pm

## Sibford Ferris Annual Parish Meeting

Wednesday 9th July at 7.30pm

in the Sports Hall classroom at Sibford School

## Village Hall Fayre

Saturday 12th July, 2 pm

## Coffee Morning at Carters Yard

In aid of Holy Trinity Church

Saturday 19th July 10 - 12 noon



## Nature Notes

May 24th I have not seen the bullfinches feeding their young ones in the nest in the wall shrubs on our bungalow wall today and wonder whether they have died.

May 27th My grandson went up to look at the bullfinches nest and found it empty. I think the young ones must have been taken by aerial predators probably the two magpies that have spent a lot of time round the garden recently.

May 29th My granddaughter tells me that there are 29 house martins nests on the youth hostel where she is working in North Wales. They are all on the south or west side of the building. She also says that there are plenty of cuckoos and plenty of big hairy wooly bears. (the caterpillar of the garden tiger moth) I still wonder whether they are essential food for the cuckoo as we have so few of the caterpillars or cuckoos when we used to have plenty of both.

May 31st I have not heard a cuckoo this year but one was heard in Sibford Ferris today.

June 5th Although I cannot hear larks now it is nice to know that they are still plentiful and singing in parts of the parish.

June 9th It was interesting to see on the TV programme "Springwatch" how a clever badger had taken to swimming across to islands in the scrapes at Minsmere where the concentration of water birds nests made it much easier to get a feed of eggs than it is in an area like this.

June 10th I hear that an otter was seen at Traitors Ford recently.

### HOLMBY HOUSE

#### SIBFORD FERRIS

A stunning setting for special celebrations

*From Buffets to Gourmet Dinners*

Formal dining for large groups

Garden parties Business meetings

Wedding receptions

Luxurious B & B

Self-catering accommodation

Tel/Fax: 01295 780104

[www.holmbyhouse.com](http://www.holmbyhouse.com)

[Sally.wass@btinternet.com](mailto:Sally.wass@btinternet.com)



BESPOKE DESIGN SERVICE FOR  
CUSTOM MADE FURNISHINGS

**Curtains, Blinds & Cushions**

**Loose covers**

**Headboards & bedspreads**

**Curtain poles & tracks**

**New Sofas & chairs & reupholstery**

**Lampshade making**

**01295 788145**

**[info@annwoolgrove.com](mailto:info@annwoolgrove.com)**

**[www.annwoolgrove.com](http://www.annwoolgrove.com)**



June 12th The jackdaws have been making a lot of noise around the rookery in Sibford Ferris and early one morning there were about 20 of them on our lawn. They were probably feeding on ants. Some of them were young ones that were being fed by their parents. They must in some way benefit from the rookery. My grandfather wrote in 1932, when touring Ireland that in Donegal the jackdaws made their nests in the lower part of deeper rooks nests. He noted that the clump of trees that the nests were in were the only trees for quite an area round and there were no other possible jackdaw nesting sites that he could see.

June 13th We have a bumble bees nest in the corner of our bungalow roof. At least it will be safe from badgers up there.

June 15th A swift going at speed failed in its attempt to collect a pigeon feather as it floated down but it made a tight turn and still got it on the way back before it came down on top of the hedge. I did not think that swifts could build nests as they cannot land to collect the material for one but they must still like to get a feather for lining when opportunity offers.

June 16th We have seen quite a few bats over the last few evening but I wonder what they feed on. Moths are few and far between.

## PIT STOP CATERING

Sibford School Car Park  
Every Tuesday evening  
between 5.30 and 8 pm.

With

FISH&CHIPS  
SOUTHERN FRIED  
CHICKEN & CHIPS  
PIE & CHIPS

PLUS a "Special Meal" every week

## YOGA

Sibford Village Hall

Tuesdays 9.00-10.00am

Fridays 9.00-10.00am

(beginners welcome)

Any enquiries to:

Juliette – 07703 836 856

[Juliette53@btinternet.com](mailto:Juliette53@btinternet.com)

New class from April 24th

## PILATES IN SIBFORD

Madeleine Wilson M. Sc, Mat &  
Studio Master Teacher

Offers

Bespoke One to One  
and Duet sessions

Training on Specialised Pilates  
Equipment

Reformers, Chairs, Barrels  
& Cadillac & Small Group

Matwork Classes

For all Levels from Beginners to  
Advanced

Tel: 01295 780279

Mob: 07905 953300

[E:mwl@linuxwaves.com](mailto:E:mwl@linuxwaves.com)

[www.pilatesinsibford.co.uk](http://www.pilatesinsibford.co.uk)





## Sibford Horticultural Society

With this Scene there should be a schedule for the August Horticultural Show. If you are missing your copy please contact Gil Soden (780543 Gower / Burdrop)  
Helen Lamb 780380 (Ferris)

## The Warriner School BBQ & Fun Day.

Saturday 12th July 12 - 4 pm

OPEN FARM, Bouncy Castle, BBQ, Tea & Cakes, Reunion meeting place and tours of the school, Open Piano, 'Old boys' 5-a-side football, Live performances by the school orchestra, choir and funk band, Bar, 'Old girls' netball match, Horse and carriage rides and more.

Adults £3 students and children free



## Sibford Stores & Post Office, Sibford Ferris

OX15 5RG

Telephone 01295 788317 / 788348

YOUR LOCAL CONVENIENCE STORE AND NEWSAGENT

We deliver newspapers and magazines 7 days a week to all the surrounding area. Place your regular order today, whether for 1 day a week or 7. Always a wide selection of magazines available, specialist titles available to order.

Chilled & Frozen foods, groceries, cigarettes, beers, wines and spirits, fresh fruit and vegetables, pet foods, household goods, toiletries & medical requisites and lots, lots more.....

Health Lottery, Photocopying, fax service, dry cleaning

We will also undertake your mailings for you, just ask.

Always an excellent selection of Hook Norton bottled beers in stock.

Telephone your grocery order for free local delivery.

### OPENING HOURS

Monday to Saturday 7.30am to 7.30pm

Sunday 7.30am to 4.00pm

PLEASE SUPPORT YOUR LOCAL POST OFFICE, THERE ARE LOTS OF PRODUCTS AND SERVICES AVAILABLE ON YOUR DOORSTEP



## SIBFORD FERRIS PARISH COUNCIL ELECTION RESULTS

Following the Parish Council Election on 22 May, Joanne Connor, Maureen Hicks, Tim Huckvale, Adrian Lamb and Peter Robinson were re-elected to the council

### SIBFORD FERRIS ANNUAL PARISH COUNCIL MEETING HELD 2 JUNE

The meeting was attended by all parish councillors, the clerk and two members of the public with apologies from District Councillor George Reynolds. Joanne Connor was elected Chairman and Maureen Hicks as Vice-Chairman, with Anita Spencer (Clerk) taking over the role of Responsible Financial Officer. The following items were addressed: the implications of the School Transport Review for the community; an update on efforts to improve broadband speeds in the Sibfords; the use of Wheathills for non-agricultural purposes; the investigations into acquiring a defibrillator facility; provision for badgers at the solar farm; closure of the churchyard and assistance with mowing costs; the problems reported from Sibford Gower of negotiating the corner at Temple Mill; the review of the Community Plan; the lack of information from Cherwell District Council following the parish council election; parish council insurance renewal; clerk's equipment; affordable housing; the new fitness equipment at the MUGA site and the post-installation inspection report; Cotswold Close play area and annual inspection report; a local heritage assets register; the provision of a replacement lamp and new lamppost on Mannings Hill; the consultation on non-emergency patient transport services; the annual return to 31 March and internal audit; planning. Under Any Other Business, the matters of damage to the bench on Hook Norton road and a hedge overgrowing Main Street were raised. The next meeting was arranged for Monday, 23 June when the annual return would be approved for sending to the external auditor. The meeting closed at 9.50pm. A copy of the full draft minutes of the meeting of 2 June is available on [www.thesibfords.org.uk](http://www.thesibfords.org.uk) or from the Clerk on 788557.



# The Firs Garage

[www.firs-garage.com](http://www.firs-garage.com)

Family business established 1960



Tel: 01608 737349 / 737641

Hook Norton, OX15 5DD



All-new Mitsubishi Outlander 4x4

Extensive range of new  
and used cars & 4x4's:  
petrol, diesel & electric

Part exchange welcome

Service  
MOT Parts  
Bodyshop  
Fuel Shop

**ALL MAKES  
SERVICING  
COMPETITIVE PRICES**

*We look forward to seeing you, the kettle is on!*





On 19<sup>th</sup> June a group of ten from the Sibfords Society enjoyed a very entertaining walking tour of Stratford, starting at the Birthplace of Shakespeare and ending at the RST. Our guide, David Gunnell, aware that we were a local group, avoided the usual information on Shakespeare and told us a great many facts about the architecture and history of the town and its Bard which were probably quite new to us all.

One of the most notable details was that the Birthplace was saved in 1846 from the fate of being bought by the showman P.T. Barnum and transported brick-by-brick to the USA! Thankfully the Shakespeare Birthplace Trust, then the Shakespeare Birthday Committee, purchased it. David painted a picture for us of the house as it would have been when Shakespeare was a boy, not pristine with carefully tended gardens, but a hectic household and place of business, with the pervasive stench of hides being cleaned and tanned filling the air all around.

Somehow the two hours shot by, while we were given an outline of Shakespeare's whole life, and shown all the places of importance in the town. Next time we go there we can forget about the twee souvenir shops and just appreciate the many 15<sup>th</sup> Century timber-framed buildings which are still all over Stratford.

An impromptu performance by David in the riverside gardens and lunch outside the theatre completed a lovely trip.

- Bespoke bathrooms, kitchens and carpentry
- Fitted furniture
- Plumbing and electrical works
- Home improvements and renovations

**Hugo  
Seely**

*Trading in the Sibfords since 1992*

From concept to completion  
*Exceptional value,  
exceptional service*

T: 01295 780355  
or 07773 319239  
E: [hugo.seely@gmail.com](mailto:hugo.seely@gmail.com)

*Excellent references*



On 17<sup>th</sup> July the Sibfords Society goes to Swinbrook for a short talk in the church there about the Mitford sisters and to see the family graves. We will also have the chance to walk to the tiny church of St Oswald out in the meadows nearby, and afterwards we can sit in the gardens of the Swan Inn, owned by the Duchess of Devonshire, the youngest Mitford sister. The cost towards the talk is £2.

The talk in the church begins at 18.30. Please either meet us there or depart from the Village Hall at 17.40. Please inform either Diana Hughes: 780506 or Bryan Mills: 780248 if you would like to come. Non-members are of course very welcome to join us!

## Tashi Lhunpo Monks

At Sibford Village Hall

Masked dance and sacred chant  
from a Tibetan Monastery

Sunday 14th September

Pre-performance workshop

4.00 - 5.30pm £5

Performance 8.00pm £15

Nepalese and Indian food on Sun-  
day afternoon and evening

A Sand Mandala will be made  
from 3 pm on Sunday with the  
destruction ceremony at 3pm on

Monday 15th

Tickets from Diana 780506

## INDULGE IN LUXURY SKIN CARE TREATMENTS IN THE COMFORT OF YOUR OWN HOME.

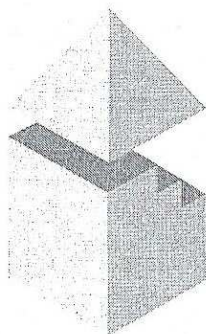
Tropic Skincare is a cruelty- free,  
Vegan, and 100% natural and proudly  
British Skincare Company.

Hold a Tropic Pamper experience and as  
the hostess you will be lavished with lux-  
ury treatments. You will get a FREE spa

Facial from our Senior

Ambassador Vanessa and 15% of the val-  
ue of sales on the night to spend on any of  
our products for yourself.

To book a date or if you have any ques-  
tions call 07967 737469 or email  
[pamperwithtropic@gmail.com](mailto:pamperwithtropic@gmail.com)



## DAVID BOVILL

### ARCHITECTURAL AND PLANNING SERVICES

Providing a personal service from Design through Planning  
and Building Regulations, and beyond if required

Specialising in Extensions, Loft Extensions and Listed  
Buildings work

Please phone or e-mail to arrange a free initial consultation

01869 347906

[davidbovill@btinternet.com](mailto:davidbovill@btinternet.com)



## SIBFORD FERRIS ANNUAL PARISH MEETING

Will take place on Wednesday, 9 July at 7.30pm in the Sports Hall Classroom (First Floor) at Sibford School. Items included on the agenda will be reports from: The Chairman, Responsible Financial Officer, the Town Estate charity on Wheathills, the Village Hall, Mr Goodwin of Sibford School and the Community Plan Co-ordinators. It is hoped that representatives from Thames Valley Police and the Highways Department will also attend. Items identified for discussion will include: Affordable Housing, Defibrillator, Wheathills, Closure of the Churchyard, Traffic at Temple Mill and Further Development of the MUGA Site. Please take this opportunity to find out what is happening in your village and come along on 9 July.

### Micks Sticks

Fire Lighting Wood For Sale  
£3.00 per big bag  
Call in anytime and ask for  
Mick Canning, at  
The Old Malt House,  
Sibford Ferris  
Tel: 01295 780321

### For Practical Garden Assistance

Please contact Nick Taylor  
07425136992  
johnnicktaylor31@gmail.com  
01295 680206  
01295 788397  
All types of garden  
work undertaken



### OPUS Property Services Ltd

01295 780652  
07816592124

All aspects of property maintenance and refurbishment undertaken from replacement light bulbs and tap washers to new ceilings and floors.

Plumbing, tiling, wood flooring, floor renovation, under floor heating, plastering, electrics, decorating, damp proofing, carpentry, locks, drains, kitchens, bathrooms etc

Call us or visit our website for  
more information:  
[www.opusps.co.uk](http://www.opusps.co.uk)





### Sibford WI Meeting - 10<sup>th</sup> June 2014

The President welcomed three guests to a well attended meeting – Joyce Seely from Canada (staying with Secretary Lynda Conway) and two more local ladies from Burdrop

(Mary Eddis and Valerie Parkinson). Members were invited to sign up for the Members Lunch on Thursday, 14<sup>th</sup> August at the Stratford-upon-Avon Rooftop Restaurant, organised by Lynda. Sibford WI will not be having an annual coach outing this year. However, ten of us will be joining Hook Norton WI coach outing to Greys Court on 17<sup>th</sup> July.

This month, Christine Abel, entertained us with a talk about hats and the hat hiring business she runs called “The Hat Box” in Broughton. Christine told us how to determine our face shape and then explained the theory of matching hats to the different shapes. For example a round face suits a hat with a big brim, a high flat crown and lots of decoration. Those lucky enough to have an oval face can wear any sort of hat. The hat hiring business is a fun job as it is generally all about happy occasions such as weddings, Royal Ascot and sometimes, Buckingham Palace garden parties! People are also very honest as Christine has experienced only one lost and three damaged hats in seven years of trading. We were then invited to find hats to suit from the large and colourful range placed on the table. It was a very interesting and enjoyable session with lots of enthusiastic hat trying-on and Christine was thanked by Lynda Conway. Eleanor Joynes and Jan Warner served tea with delicious cakes baked by Eleanor. Christine was invited to judge the competition for ‘A Decorated Hairpiece’. She decided on Val Powell as first, Kathleen Winter as second and Lynda Conway as third.

Tuesday, 8<sup>th</sup> July is the date for our Garden Meeting to be held at the home of Mary Hill – Walnut Tree House, Goose Walk, Church Street, Bloxham. Those members who are not making their own way there, please assemble at Sibford Village Hall carpark at 1.30pm to make up car

loads. Should the weather be very wet, the meeting will have to be relocated to the Village Hall. No competition. No raffle. Instead, National WI raffle tickets will be on sale.

Mary Hill

**Victoria Smith**  
**MASSAGE THERAPIST**  
**@ Serenity, Sibford Gower**  
*"Life takes it out of you, but  
Massage puts it back"*  
**07974 231571**



## NEIGHBOURHOOD WATCH

Police Phone No. 101

Crimestoppers No. 0800 555111

Trading Standards No. 0845 0510845

July 2014

Neighbourhood Watch Schemes:

Cut Crime and the opportunity for crime. Help and reassure those who live in the area. Encourage neighbourliness and closer communities. They help develop a close liaison between the community and the police.

There have been a number of burglaries from cars. Do not become a victim. Please remember to remove all bags etc. from your car and lock it even when it is on your own property.

Please follow police advice at all times and help us to make The Sibfords unattractive to unwanted visitors. Please remember scams are carried out over the telephone and by E-mail.

If you see anything suspicious or have any concerns regarding phone calls or E-mail, please phone the Police with as much information as possible.

### **Bed & Breakfast**

**AGDON FARM**

**Nr Brailes**

**Comfortable rooms  
in old stone farmhouse**

**Tel: Maggie Cripps**

**01608 685226**

**Holiday Let**

**For 1 or 2 people**

**In quiet, self-contained  
annexe**

**Contact Judy Abbott**

**01295 780731**

Holiday apartment overlooking  
Lake Trasimeno, Umbria, Italy.

Self contained ground floor apartment; open plan lounge/ kitchen /diner, 2 bedrooms, 2 bathrooms, shared use of private garden/pool, panoramic lake views, close to bars, restaurants, shops and lake ferry. See us on

[www.ownersdirect.co.uk](http://www.ownersdirect.co.uk)  
property ref IT12664

Or for further details; please  
contact local residents:-  
[linckchick@gmail.com](mailto:linckchick@gmail.com)



### Sibford's Cricket in Full Flow

It has been a bit of a mixed start to the season with four wins, four losses, one tie but only one match lost to the weather.

The Saturday league side started the season with a losing weak side versus Silverstone and were all out for 99 with only Ian Wollerton with 49 making any real impact.

This was followed with three consecutive wins. Notable performers were Lee Gilbert with 5-31, Matt Wood 30 and Ian Wollerton 36 no against Crown, Richard Ferley 91 no, Simon Chard and Dave Brassett with 3 wickets each against Syresham and Lee Gilbert 6-32, debutant S Brabham 3-23 and Rich Morbey scoring 27 no against Middleton Cheney A. This was followed by a loss against Helmdon where having posted what was thought to be a respectable 183 with good batting throughout the team, one of the opposition batsmen then had a field day which included seven 6s which got the opposition home safely.

The Sunday side have had good fun at each other's expense (literally!) in the four matches so far. The season started with a thrilling tie against a noisy Round of Gras. Steve Glanvill's 63 and the Chairman's 46 no resulted in a what was thought to be a defendable 170 total. However, despite good bowling from Lee Gilbert with 4-27, the total was reached but not exceeded by the last pair at the crease in the last over. A good day was had by all.

This was followed by two losses against Milton where only Simon Chard with 2-27 and Kit Lamb with 34 made any impressions and then against a strong Quinton side who posted over 200 with only the Chairman with 3-26 offering any containment and Steve Galnvill with 47 and Scott Cuthbert with 31 offering any real batting resistance in Sibford's 117 response.

The first Sunday win came against Hook Norton where a healthy 206 was posted by Sibford with notable contributions from Steve Glanvill 35, Dave Pratt 50 (held the inning together in Geoffrey Boycott style with 50 in 33 overs, got fined for slow scoring and then had to buy a jug of beer for his half century!) and young Will Eagles with 40 no. Hooky's response was always faltering with Lee Gilbert talking 5-17.

July home games include Towcestrians (5th), Round of Gras (6th), Syresham (19th), Steeple Aston (20th) where all are welcome to watch and support.

A date for the diary - the annual Bert Gilbert Memorial Club game with BBQ etc is on 3 August with fine weather and plenty of fun guaranteed! Come and join us for this annual event.



## NEW HEAD OF SIXTH FORM AT SIBFORD SCHOOL

Sibford School has announced the appointment of Cate Mallalieu-Needle as its new head of Sixth Form studies.

Cate, who has extensive experience and expertise in post 16 education, will take up the position in September.

Speaking about her appointment she said: "Young people today are facing a future in a very challenging world. They are also embarking on A level qualifications that, I firmly believe, have become increasingly more academically complex.

"To prepare for these challenges, students need individualised support and guidance and I am delighted that Sibford School will provide me with the opportunity to share my skills and understanding with students on a one-to-one basis.

"I am hugely excited by the future and I am looking forward to what this will mean for myself, the sixth formers and their tutors."

For the past four years, Cate has been Director of Post 16 Studies at Cooper School in Bicester. For five years prior to that she was head of sixth form at Chipping Norton School.

Sibford School head Michael Goodwin said: "We are delighted to welcome Cate to the team here at Sibford and look forward to the skills and enthusiasm she brings with her. When Cate joined Cooper School there was no existing provision for students to stay on after GCSEs. She oversaw the successful creation of their Post 16 Study Centre and I know that many of the talents she displayed in carrying out this task will be of great benefit to Sibford."

Sibford Sixth Form provides a range of post-16 opportunities for both Sibford's own pupils and to pupils who join from other schools.

Cate met up with some of her new students when she visited Sibford recently to chat with current year 10 and 11 pupils and their parents.

"I have chosen to move to Sibford because the school has an established reputation and ethos of individual support for all students and beliefs of tolerance and respect which strive to bring out the best in everyone," she said.

### Colour Analysis by Annie Broe

I will show you which colours are best for you.

Wearing the right colour is an easy and effective way to improve your appearance.

You will instantly look more radiant, younger, healthier and will improve your confidence.

Colours are very powerful – use this power to your advantage and look fantastic!

Gift Vouchers available – the perfect present

For a personal colour analysis or for more details please call me on

01295 780637 or 07930 398151 or email [annie4colourandstyle@gmail.com](mailto:annie4colourandstyle@gmail.com)



"I plan to build on this very firm foundation and to support all students with their individual plans and aims for the future – whether that be heading for University or taking a vocational route.

"I will be looking at the courses currently on offer and seeing how these can be expanded to provide you with a challenging, exciting and relevant environment. I will also be on hand to help you to develop essential study skills, provide academic mentoring and generally increase the number of options open to you."



Cate Mallalieu-Needle is pictured with some of Sibford's current Year 10 pupils ... Finn Ridley, Harry Berks, Beth Hughes, Amanda Helgemo and Eleanor Walton.

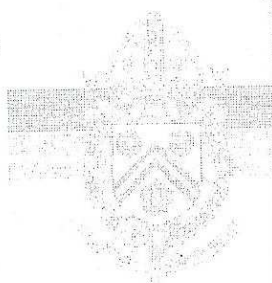
### Summer Holiday Activity Club

Sibford School's popular Fun in the Country holiday club will be operating during the summer from Monday 28 July until Friday 22 August (week days only). Children can enjoy a range of activities including swimming, crafts, sports and cooking. Cost is £28 per child per day. To book a place call Elspeth Gregory on Banbury 781203 or email: [funinthecountry@sibfordschool.co.uk](mailto:funinthecountry@sibfordschool.co.uk). Pre-booking is essential.

Damian and Debbie

Welcome you to enjoy the atmosphere of our 16<sup>th</sup> century thatched Inn.

- Bar and a la carte menus available lunch & dinner.
- Excellent Sunday lunch - to suit the weather!
- New food and wine takeaway menu.
- Wednesday steak and wine night £15.00
- Selection of fine wines and real cask ales.
- Happy hour and a half every Wednesday evening!
- Gift vouchers available.



THE  
WYKHAM  
ARMS

TEMPLE MILL ROAD

Temple Mill Road  
Sibford Gower  
Nr. Banbury  
OX15 5RX

Tel: 01295 788808 / 07

Take a look at our new website  
[www.wyksamarms.co.uk](http://www.wyksamarms.co.uk)

email.  
[info@wyksamarms.co.uk](mailto:info@wyksamarms.co.uk)

Opening Times  
12.00am-3.00pm  
6.00pm-11.30pm

Bar only Sunday Night  
Closed all day Monday  
(Except bank holidays)



## Sibford Gower Annual Parish Council Meeting – 9<sup>th</sup> June 2014

The Meeting took place in Sibford Gower Endowed Primary School with the re-elected Parish Councillors, County and District Cllr George Reynolds and seven local residents in attendance. Also present, at the invitation of the Parish Council, was Mr Maurice Sheehan (Area Steward, Oxfordshire Highways). Cllrs Murray and Abbott were re-elected Chairman and Vice Chairman respectively.

Chairman's Report: Defibrillator:: The acquisition of a defibrillator is ongoing and further information will be provided in due course. Signs at Temple Mill: The meeting agreed that the PC would support Sibford Ferris PC in a request for signs at Temple Mill indicating vehicle priority and that the road was single-track. Parking problems in Main Street, Sibford Gower around the Pond: Debate has continued about this problem for more than twenty five years. The present Parish Council generally takes the same view as that agreed by its predecessors in 1994, that there is no immediate solution, although in the long term alternative off-street parking might be found. It has been decided not to discuss this topic again for the next three years. Sibfords Community Plan: Two aspects of the Plan were carried forward by the Parish Council.

The first concerned the provision of allotments where minor interest by residents had been expressed but nobody has so far come forward to organise a management group to take control. It was agreed to join with Sibford Ferris PC if their appeal for volunteers produced results, otherwise to abandon the scheme. The second concerned the formation of a Walking Group and this was formed, albeit small in number, and regular walks currently take place. Verge in front of Bishops End (formerly The Bishop Blaize): The PC expressed its opposition to any form of obstruction on the verge, in the belief that there was an agricultural right of access to the adjoining field. They noted

### **Need a pamper?**

I'm a beauty therapist fully trained to NVQ level2 and am currently learning level 3. I offer a wide range of beauty treatments from a basic eyelash tint to Gel nails and spray tanning.

Luxury treatments at affordable prices.

All treatments done from within my own beauty room. For any details or prices please don't hesitate to contact me

01295780705 / 07854016463

Holliewallington@hotmail.com

**LOGS, HAY,  
STRAW**

**Garden Manure  
Half pigs for the  
freezer (limited)**

**Antony Sabin**

**01295788421**

**Richard Wallington  
Builder**

**Block Paver Drives a Speciality**

**Also Extensions, Patios**

**Fencing etc.**

**High Quality Work, Free Estimates**

**01295 780705 07743 932545**

**(Sibford Gower) (Mobile)**

### **BIKE REPAIRS & SERVICING**



**General servicing  
Repairs**

**Cleaning & maintenance**

**All makes and types of bike**

**Reasonable rates, speedy service**

**For all your bike repair needs, call: 01295 780355**



that half of this access had already been obstructed by a new fence and hedge, and asked Oxfordshire Highways to report on this apparent infringement of the rights of neighbouring owners to cross the verge in order to access their properties. Clerk's Report: Notification had been received from Cherwell District Council that Bishop's End (formerly The Bishop Blaize) had been nominated by The Bishop Blaize Support Group for listing as an Asset of Community Value and this is to receive consideration. A letter had been received from the Information Commissioner's Office following its receipt of a complaint from a local resident that information about her and her property held by the Parish Council was being withheld from her. This was strongly refuted. The IFO will now take no further action. Annual Financial Return: The

Members of the Parish Council approved the Annual Financial Return for the year ended 31<sup>st</sup> March 2014 for submission to the External Auditor and the Receipts & Payments Account for the same period. Thanks were expressed to Mr David Soden for carrying out the internal audit. The Members of the Parish Council acknowledged their responsibility for ensuring that there is a sound system of internal control and that this was exercised during the financial year..

Planning Matters: Since the previous Parish Council Meeting, five planning applications had been considered and five decisions received from Cherwell District Council. Highway

Matters: Oxfordshire Highways is to be requested to mark a Keep Clear sign on the road opposite the phone box in Main Street because anyone parking there blocks the essential access for the milk lorry and tractors to the farm at Rye Hill. At the same time the refreshing of other Keep Clear signs in Main Street would be welcomed. Oxfordshire Highways has been asked to provide a map of the Parish and, when received, the drains that tend to flood and give cause for complaints will be marked. Oxfordshire Highways will be requested to carry out such remedial work as may be necessary to prevent future problems. Footpath Matters: Cllr Susan Bannister, who leads the Walking Group, said that generally the footpaths appear to be in good order. Cllr Gilian Soden raised the matter of the path that leads from Hawkes Lane towards the road to the Doctors Surgery in respect of which complaints had been received

from some elderly residents that part of it is slippery and something of a potential hazard. The Parish Council is currently in discussion with Oxfordshire County Council with regard to this matter. Village Pond: The Chairman informed the Meeting that the Parish Council's application to register the Pond as a town or village green under section 15(2) of the Commons Act 2006 is still awaiting consideration by Oxford County Council's solicitor. Public Participation: No matters were raised. Any other Matters: Mrs Mulley stated that she wished it recorded that her views were not as represented in a recent letter to the Sibford Scene.

The next Meeting will be on Monday, 22<sup>nd</sup> September 2014 starting at 8pm in the Staff Room of Sibford Gower Endowed Primary School,

There being no further business to discuss, the Chairman thanked all present for attending and closed the Meeting at 9.15pm.

## Hawthorn livery

Hawthorn stud  
South Newington

Ox15 4JP

We offer Full, Part & D.I.Y  
Secure tack room & CCTV  
50 x 50 flood lit ménage with  
show jumping equipment  
Drink making & toilet facilities

4 Large paddocks  
Places now available

Call in for a chat  
or phone for more details

01608 683911 or 07798764580



## AFFORDABLE HOUSING FOR THE SIBFORDS

Following the drop-in event on affordable housing proposals held at the village hall on June 5<sup>th</sup>, the information boards and plans set up by Cherwell District Council and the developer are available to view on the Sibfords website, [www.thesibfords.org.uk](http://www.thesibfords.org.uk).

---

Hello from Thailand.

We arrived safely back to Thailand on the 22<sup>nd</sup> May and after staying one night in Bangkok we were home on the 23<sup>rd</sup> May we were told of curfew when we went to get our evening meal and that we had to be in our Hotel by 10.00pm and could not leave before 5.00am but up in Bualai as long as you are in your village by curfew time that's Ok we had a good drive back to Bualai and the only road blocks we saw was going the other way towards Bangkok. Back to school on the Monday and so back into the thick of school life we both now do another school in another village we do it for our friends who are Teachers there I started going to their school before the holidays they only have 70 children in the school.

### **Cotswold poultry**

**Hawthorn stud**

**South Newington**

**Ox15 4jp**

**Full range of p.o.l hens**

**Fully vaccinated**

**Free wing clipping**

**Advice on health & care**

**Holiday stay for your hens!**

**Call in or phone sue for more details**

**01608 683911 or**

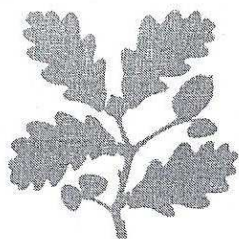
**07769153351**

**Email**

**cotswoldpoultry@gmail.com**

The weather here is very hot at the moment it never gets below 85f and we have had a lot of thunder storms and heavy rain over the last 3 weeks, Robin has managed to get his garden back and has planted Courgette lettuce pak choi tomatoes coriander and chines kale and they have all come through in the last 3 days not bad when he only planted them last Friday. We are both keeping well but finding the heat a bit much but then the locals are finding it too hot as well. Will write again soon.  
From Robin & Ann





**National  
Trust**

## Jazz up your Summer at Upton House

Join the Jazz Party at Upton House and Gardens on Saturday 12 July. Master the Charleston and other 1930s dances with our professional duo, Hoppin' Mad whilst listening to music from the jazz band The Charleston Five, part of the Charleston Chasers.

Adoring our lawns, our bar will be serving Pimms and Champagne as well as coffee. So bring a picnic, enjoy the music and have a dance as the sun sets in the beautiful gardens of Upton House.

Exclusive offer: Group discount for our local villages.

Book a party of 10 adults before the day and we will only charge you for the price of 9! Gates open at 6pm with the party getting underway at 7pm.

Prices are £17 on the door or £15 if pre-booked (£7 for 5-18yrs).

Booking is essential on 0844 249 1895 or online at

<http://www.nationaltrust.org.uk/uptonhouse>



**HORTON**

## Proposal to Close Fiennes Centre Beds!

Plans are in hand to close the Psychiatric beds at the Horton and transfer patients to Oxford.

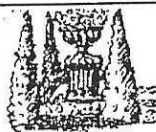
Would this affect your family? Would this

pose travel problems for you? Would this adversely affect treatment?

In complete confidence we need to know what's going on.

Tel 077450599736 Email [keepthehortongeneral@hotmail.co.uk](mailto:keepthehortongeneral@hotmail.co.uk)

Message "Horton Campaigner" on facebook



### BED AND BREAKFAST

Buttslade House, Sibford Gower  
offers supremely comfortable en suite  
accommodation in the charming setting  
of a tranquil English country garden.

Contact Diana Thompson

01295 788818

Or [diana@buttsladehouse.co.uk](mailto:diana@buttsladehouse.co.uk)

[www.buttsladehouse.co.uk](http://www.buttsladehouse.co.uk)

## C. A. Berger

Painting & Decorating  
Interiors & Exteriors  
Residential & Commercial  
Carpentry Repairs  
and  
Property Maintenance

**Mobile: 07875 212 315**

Office Tel/Fax:  
01295 738633



## VILLAGE HALL NEWS

Many thanks to all who helped to make the Dog Show a success. Our judge Peter Abbott and the Rev Ronald were a great team. The winner of The Sibford Top Dog Trophy went to Daisy with owner Lesley Bishop from Sibford Gower. Reserve was Toby with seven year old Tom Rowley from Burdrop, who also won the Best Dressed Dog and Owner class. The Best Young Handler trophy was won by Sarah Spencer with Jazzy from Sibford Ferris. We raised £446-00 which will go into the Village Hall Refurbishment Fund.

The VILLAGE HALL FAYRE is on July 12th from 2pm.

We would welcome any gifts /donations of items for the stalls. Contacts are;

White Elephant Ginny 780373

Gifts Sally 788367/Diana 780506

Books Petra & John 780462

Bottles Clive/Jan 780475 or Joan 780410

Cakes Anita 788557 or Ginny 780373

We will have stalls, cakes, teas, bar, competitions, face painting, bottle tombola, books, plants, raffle, bouncy castle, Paper plane making and flight competition and an Art display. Do come and help make it a fun afternoon.

## VILLAGE HALL AGM

will be on September 29th in the large hall. Everybody welcome.

BRIDGE DRIVE Join us on October 25th From 2pm to 5pm. Funds from this event will go into the Hall Refurbishment fund.

MUSICAL EVENING Ilone and Matt are going to entertain with music. Refreshments available in the interval, and bar open from 7pm. More details in September 'Scene'.

## DATES FOR THE DIARY

The QUIZ night will be on November 22nd for teams of up to 6 people. FILM nights will restart in September.

LOST AT THE Dog Show -an umbrella [navy with white spots and pink hearts] Contact Muriel on 01295 780025.

**Oxon Computers**  
Get IT sorted!..

- ◆PC speed up service
- ◆quick repairs & upgrades
- ◆Help & advice
- ◆Malware Zapped!!!

**CompTIA IT Technician**

www.oxoncomputers.co.uk  
Get IT sorted!..

Tel: 01295 788766  
email: admin@oxoncomputers.co.uk

BOOKING SECRETARY for the Village hall  
is Ginny on 01295 780373 or via  
thesibfords.org website.

## THE VILLAGE SHOP HOOK NORTON

### \*NATIONAL LOTTERY\*

Grocery - Greengrocery - Bakery  
Wines - Spirits - Confectionary  
Newspapers - Magazines - Cards  
Video Rental - Bottled Gas

Open Monday to Friday

8 am to 8 pm

Saturday 8 am to 8 pm

Sunday 8 am to 6 pm

Telephone: 01608 737245



The Sibfords Walking Group  
 '30 June Short (no more than 1.5 hours) Route tba  
 14 July Great Tew Park circuit  
 28 July Wroxton circuit Will alter route if very wet  
 11 August Route tba  
 1 September Note: 3 week gap Route tba  
 15 September Route tba

We leave Sibford Gower Village Hall car park at 10 sharp, sometimes on foot, sometimes driving to the start.

Dogs on leads when requested are very welcome.

Boots and walking poles recommended but not essential, though some routes are rough.

The routes are normally a circuit and take about 2 hours unless marked as short.

Please email [sebannister@gmail.com](mailto:sebannister@gmail.com) or phone 01295 780365 if you have any queries.

### WELCOME TO SIBFORD

If you are a new resident of Sibford and have not yet received a copy of the "Welcome to Sibford" booklet, please telephone Ivor Hopkyns on 788367 (Gower or Burdrop) or Nic Durrant on 788865 (Ferris), and a copy will be delivered to you. The information will help to make you feel at home - by acquainting you with the services, schools, clubs and societies that are currently active in the villages.



**QUALITY FISH  
 DIRECT FROM  
 GRIMSBY MARKET**

Proprietor: T.P.Martin  
 Tel: 07812 361853

Best fresh fish and shell fish to your  
 area direct from Grimsby on the  
 Lincolnshire coast

I'll be at Sibford Village Hall car park  
**EVERY MONDAY** from  
 approximately 4pm till 5.30pm

**Miss 'T' Catering.**

Catering for events such as:  
**Anniversaries, Weddings,  
 Christenings, Birthday parties,  
 Funerals**

**And private dinner parties.**

~.~.~

**Also available  
 Cutlery and Crockery Hire.**

**Contact Victoria Taylor on:**  
**Mob: 07841 910037**  
**Home: 01295 788924**



In reply to last months letter to the Editor

We are privileged to live in a lovely area, a no-through road with a working dairy farm at the end. ALL members of the community should want to help each other. Since living alone, the number of mid/late evening knocks on my door has considerably increased due to the milk lorry and other vehicles not being able to pass. Opening the door has caused me great anxiety.

To help ease the lack of parking by the pond now effecting Main Street, I have asked for ALL residents to be asked to park on their own land and for the public parking area between Bonds End Lane and the green to be reinstated and allocated for residents with no parking. The grass has been allowed to grow across this area, which was for people visiting The Post Office at Cedar Holm.

I have not accused Dr. Murray or the PC of not working. I did raise my voice with frustration as three members of the PC know exactly the area I mean.

Mollie Mulley.

**For Lawn  
Mowing and  
Strimming  
Call Gerry  
01295 780735.  
Thank You.**

**GODSWELL NATURAL THERAPY  
CENTRE**

*Godswell Lodge, Church Street, Bloxham, OX15 4ES  
Tel: 01295 722788*

\*\*\*\*\*

Acupuncture ; Body & Face Therapies ;  
Bowen Technique ; Chiropody/Podiatry ; Cognitive  
Behavioural Therapy (CBT) ; Continence Advice  
(for women and men) ; Counselling ; Cranio-Sacral  
Therapy ; Homeopathy ; Hypnotherapy ; Lymphatic  
Drainage Massage ; Massage (inc deep tissue, hot  
stone and Indian Head) ; McTimoney-Corley Spinal  
Therapy ; Nutritional Therapy ; Yoga ; Reflexology  
& Remedial Massage

\*\*\*\*\*

*Fully qualified and professional therapists*

See website for further details:-

[www.bloxhamsurgery.co.uk](http://www.bloxhamsurgery.co.uk)

(follow the link to Godswell NTC)

**FARMHOUSE  
BED AND BREAKFAST  
GRANGE FARM,  
SWALCLIFFE**

*Enjoy warm hospitality & peaceful  
surroundings in our comfortable*

*18th C Farmhouse*

**CONTACT BARBARA TAYLOR**

**TEL.01295 780206 or 0771 2895728**

***WWW.swalcliffefarmhouse.com***

**Contributions for the  
August & September**

**Sibford Scene  
to the Editor by**

**July 15th**





OPPORTUNITY TO HEAR A 40 PIECE ORCHESTRA ON YOUR DOORSTEP!  
The award winning Birmingham Symphonic Winds returns to Oxfordshire to perform two concerts in Swalcliffe – a daytime concert specially devised for families and an evening concert full of great music for a summer's evening.

BSW is a 40 piece orchestra of wind, brass and percussion players conducted by Sibford Gower resident, Keith Allen.

Saturday 05 July 2014, St Peter & St Paul Church, Swalcliffe  
**YOUNG AT HEART FAMILY CONCERT at 3.00 pm**

*...an hour's fun concert for children & adults  
+ Sibford Gower Primary School Choir*

Opportunities to join in... Hear the sounds & learn about the instruments...

*Programme includes The Jungle Book*

Kids – remember to bring your parents & grandparents too!

Tickets: £5.00 each (*same price per child & per adult*)

**SUMMER SERENADE at 7.30 pm**

*...an evening of great music for everyone + Sibford Songbirds*

Programme includes: Jupiter (from

*The Planets*).....Gustav Holst;

Elizabethan Serenade.....Ronald

Binge; ABBA selection;

633 Squadron.....Ron Goodwin;

Mockbeggar Variations...Guy

Woolfenden

Olympic Fanfare & Theme.....John

Williams; Jesus Christ

Superstar.....Lloyd Webber

music by John Rutter/Benjamin

Britten/George Gershwin

Tickets: £12.00 (adult)/£5.00 (child)

01295 780193 or

susannah.arnaboldi@gmail.com

**Serenity Beauty Salon**  
**Gautherns Barn**

Specialists in Guinot Hydradermie Facials, OPI Manicure and pedicures, Waxing, Tinting and removal of skin blemishes

Jane Iredale Mineral Make-up and Environ Skincare

Winter Opening: Wednesday and Friday 9.30am-7.00pm

Call Jo Plumley 01295  
788463/07891 220275



## Church Services

Society of Friends

Roman Catholic Mass

Baptist

Sunday at 10.30 am

Wroxton Sunday at 9.00 am

Brailes Sunday at 11.30 am

Hook Norton Sunday at 10.30 am

## Holy Trinity Church services

July 6th Benefice Eucharist at Swalcliffe at 10am

July 13th 8am BCP Holy Communion & 9.30am Morning Praise

July 20th 9.30am Holy Communion

July 27th 9.30am BCP Holy Communion

August

Aug 3rd Benefice Eucharist in Sibford 10am

This Service will have quite a lot of material about the commemoration of the outbreak of World War 1 100 years ago

Huge thanks to everyone who organised, supported or attended the Trinity Fair in June; lots of people enjoyed Afternoon Tea, games to play, and the Plant Stall and over £400 was raised for church funds.

Church Clock; you will ALL be receiving a leaflet about the Church Clock and the finances associated with it; please don't just bin it!

July 19th Coffee Morning at Carter's Yard by kind permission of Malcolm and Sue Bannister. 10am to 12noon. Do come and enjoy some good coffee and a chat with others. There may be plants in addition to the customary raffle and bring and buy stall.

The next Coffee Morning will be in church on August 16th.

Canon Tim Wimbush's significant contribution to music in North Oxfordshire and his work with the RSCM (Royal School of Church Music) will be noted at a Choral Evensong in Broughton Church on Saturday September 14th.

All competent singers are warmly invited to take part and full details and an application form can be obtained from Ronald -

[reverendronald1954@gmail.com](mailto:reverendronald1954@gmail.com). there will be but one rehearsal on the day itself, plus tea!



## RED HORSE VALE LTD

All Types of Fuel, Coal, Smokeless, Gas,

Logs, Kindling, Barbecue Needs

Central Heating Oil, Oil Tanks & Coal Bunkers  
Landscape & Building Materials, Garden Centre &

Garden Supplies, Farm & Country Sundries

Equestrian Products, Horse & Pet Feeds

Open: Monday - Saturday 8am - 5pm

Windmill Farm, Banbury Road (A422),

Oxhill, Warwickshire CV35 0RP

Tel: 01926642832

Fax: 01926 642 853



# Sibford Bus Services

## Cherwell Rural Dial-A-Ride Scheme

A mini bus with tail-lift to take **elderly or disabled people** and escort to Banbury (max fare £1.60) Door-to-Door service. Book at least one day in advance. Operates on Wednesdays & Thursdays. Phone 263777 for details.

BCTA also takes bookings for groups of 8 or more on a weekly/monthly basis (Wednesdays & Thursdays) to and from Banbury. Tel; 263777

## Stagecoach – Timetable commencing 31<sup>st</sup> May 2009

Mondays to Saturdays (No services on Sundays or Public Holidays)

### Bus 50A. From Banbury towards Stratford-upon-Avon

Banbury, Bus Station	08.30	10.55	12.45	14.26	16.05	17.10	18.10
Sibford Ferris, Cross Roads	08.52	11.17	13.07	14.48	16.27	17.32	18.32
Sibford Gower, School	08.55	11.20	13.10	14.51	16.30	17.35	18.35
Shipston,	09.15	11.40	13.35	15.11	16.50	17.55	18.55
Stratford on Avon, Wood St.	09.40	12.09	14.04	15.40	17.19	18.24	19.24

### Bus 50A. From Stratford-upon-Avon towards Banbury

	NS					Sch Hols	Term time	
S on A, Wood St	06.20	07.10	09.05	11.10	13.10	15.10	15.24	16.24
S G, School	07.04	07.55	09.56	11.56	13.56	15.56	16.10	17.14
S F, Cross Roads	07.07	07.58	09.59	11.59	13.59	15.59	16.13	17.17
Ban, Bus Station	07.28	08.25	10.21	12.21	14.21	16.21	16.35	17.39
NS = Not Saturdays								

NS = Not Saturdays

All buses will operate low floor wheelchair accessible vehicles.

For complete details of all the stops that are served by service 50A, timetables are obtainable from the Tourist Information Centre in Castle Quay, Banbury.

Fares:-

Sibford Ferris & Sibford Gower to Banbury: Single £2.50 (Child£1.25)  
Return £4.70 (Child £2.35)

Sibford Ferris & Sibford Gower to Stratford: Single £4.30 (Child £2.85)  
Return £6.30 (Child £4.20)

Unlimited travel Cards are available for 1, 7 or 28 days but are regional and need to be bought in advance. Contact the Stagecoach sales office in Stratford tel; 01789 294155 for more details.



## Calendar of Events

### July

- Wed 2nd Mobile Library in the Sibfords (2.40-4.10pm)  
Sat 5th Young at Heart concert at Swalcliffe Church 3pm p21  
Sat 5th Summer Serenade concert at Swalcliffe Church 7.30pm p21  
Tue 8th W.I. Garden Meeting p9  
Wed 9th Ferris Annual Parish Meeting. 7.30pm Sports Hall classroom p8  
Sat 12th Warriner School Fun Day 12 - 4pm p4  
Sat 12th Village Hall Fayre 2 pm p18  
Sat 12th Upton House Jazz Party p17  
Mon 14th Sibfords Walking Group - Great Tew 10am from V. Hall p19  
Tue 15th Deadline for contributions to Aug & Sep Sibford Scene p20  
Wed 16th Mobile Library in the Sibfords (2.40-4.10pm)  
Thu 17th Sibfords Society visit to Swinbrook Church. P6  
Sat 19th Church Coffee Morning at Carters Yard 10 - 12 noon p22  
Mon 28th Sibfords Walking Group - Wroxton 10am from V. Hall p19  
Wed 30th Mobile Library in the Sibfords (2.40-4.10pm)

### August (part)

- Sun 3rd Bert Gilbert Memorial Cricket Match - Sibford School p11  
Mon 11th Sibfords Walking Group 10am from V. Hall p19  
Wed 13th Mobile Library in the Sibfords (2.40-4.10pm)  
Sat 16th Church Coffee Morning 10 - 12 noon p22  
Wed 20th Horticultural Show Entries - Village Hall 7 - 8.30 pm p4  
Sat 23rd Horticultural and Produce Show 2.30 - 4.00 pm p4  
Wed 27th Mobile Library in the Sibfords (2.40-4.10pm)

Cover picture; Wykham Arms

#### Sibford Scene

Editor; Adrian Lamb. Grounds Farm, Sibford Ferris. 780380

e-mail [adrian.lamb1@btconnect.com](mailto:adrian.lamb1@btconnect.com)

Advertising; Ivor Hopkyns, Elmridge Farmhouse, Sibford Gower,

Banbury, Oxon. OX15 5RT. Tel 788367

e-mail [sallyandivorhopkyns@hotmail.com](mailto:sallyandivorhopkyns@hotmail.com)