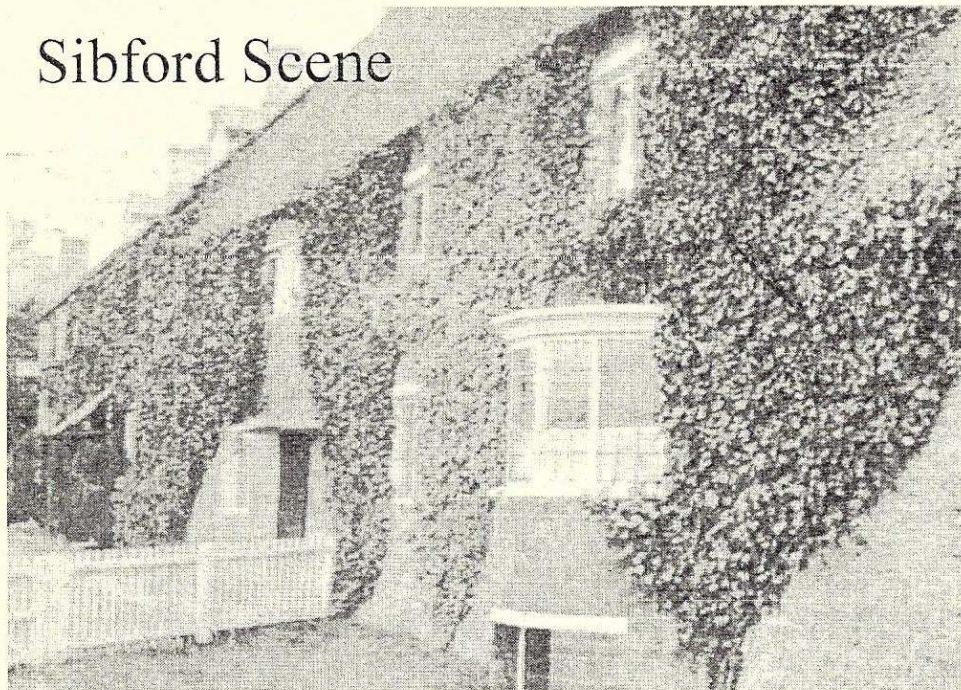


Sibford Scene



May 2013

No. 352

Sibford Ferris Annual Parish Meeting

Monday 29th April at 7.30pm
Sports Hall Classroom at Sibford School

Charity Quiz Night for Dogs for the Disabled

Sunday 5th May at 8.00 p.m. In the Wykham Arms

Sibford Horticultural Society

Spring Show and Plant Sale

Saturday 18th May 2.30 - 4.00 pm at the Village Hall

Sibford Gower Annual Parish Meeting

Wednesday 29th May 7.30pm
Primary School Hall

Nature Notes

Mar 28th 5 hares were seen in a field in Sibford Ferris so hopefully, there are a few more around than there were.

Mar 30th My wife found a tawny owl dead on our drive this morning. It was not very fat but not thin enough to make me think that it had starved to death.

Mar 31st Temperature down to 21F (-5C) at 7.00 am. It would have been a bit lower at dawn. It was colder still in Scotland falling overnight to -12C at Braemar.

Apr 6th At this time last year our warm dry spring was coming to an end and the very wet summer starting. This year we are still in the icy grip of winter. My uncle used to say that the truest thing he was taught at school was that "the climate of England is variable".

Apr 10th At last the weather is warming up and the wind is coming from the south west. Looking back, the last half of February was cold but during the four weeks from March 11th to April 8th the wind was from the east or north with sharp or hard frosts almost every night and a fair bit of snow at times. Some garden plants and shrubs that, in early March, looked to have come through the winter well have suffered badly from this late cold spell. We have not seen any siskins on our bird table but two people have told me that they have seen them on their feeders recently.

HOLMBY HOUSE

SIBFORD FERRIS

A stunning setting for special celebrations

From Buffets to Gourmet Dinners

Formal dining for large groups

Garden parties Business meetings

Wedding receptions

Luxurious B & B

Self-catering accommodation

Tel/Fax: 01295 780104

www.holmbyhouse.com

Sally.wass@btinternet.com



Ann Woolgrove
FABRICS, CURTAINS & SOFT FURNISHINGS

Personalised design service and consultancy in your own home.

Beautiful bespoke Curtains, Roman & Roller Blinds & Soft Furnishings, handmade to the highest standard.

Advice on every kind of Fabric from numerous suppliers.

Stylish complimentary Cushions & Loose Covers.

Re-upholstery service.

Custom made Bedspreads & Headboards

New Sofas & Chairs

Tel/Fax: 01295 788145
Email: info@annwoolgrove.com
www.annwoolgrove.com

Apr 12th I am reliably informed that a bittern was seen several times over a two week period but, sadly, the last sighting was only of a lot of feathers, its carcass having been taken away. I don't know what a bittern eats when freezing weather stops it getting food from the water but I would think in such a long cold period life could be hard for them. I wonder whether it was weakened by shortage of food making it an easy meal for a predator. A dead barn owl has also been found recently. Little owls usually suffer worse than tawny or barn owls in cold weather so their numbers could be greatly reduced this year as they have been in past cold winters.

Apr 14th A pair of goldcrests have been feeding among the wall shrubs and round our windows several times over the last few days which has given us a chance to see them close to. The female had a nice golden crest but the male's crest is a real dazzler at this time of the year with gold at the sides and orange in the centre and all on such a tiny bird.

Apr 16th The female blackcap has not come to feed for a few days so I expect she has moved north to her breeding ground. I saw a male one this morning and thought I heard it sing briefly but could not be sure because it was so windy. I always think that if they sing they intend to nest here.

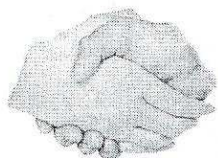
Apr 17th Two house martins were seen in the village today being buffeted by the strong wind. They are not much later than usual but will they find enough insects to keep them alive? Although we have now had a week of milder weather I have not seen a butterfly since March 5th when that single warm sunny day tempted a few out of hibernation and have only today seen my first bumble bee of the year.

The Tuesday Bike Rides

Starting at 7pm from Lanes End Corner (Ferris crossroads) Please come and join in. There are always others who have not been on a bike all winter so get in early!

We are considering a shorter ride, possibly a Thursday evening, aimed more at families. If you are interested in joining in please contact Adrian or Helen Lamb - details on the back cover.

<p>Holiday Let For 1 or 2 people In quiet, self-contained annexe Contact Judy Abbott 01295 780731</p>



Friendship Club

Once again the sun shone on our monthly trip.
This was to Becketts Farm and Restaurant.
I think we all enjoyed the day.

For the May 21st we will NOT have a coach so we
will be having a lunch out but will go by car. More about that at the
AGM on May 7th. MEMBERS PLEASE NOTE.
The June trip on the 18th may well be to Longleat



The Sibfords Society Meeting – 18th April 2013

The topic for this meeting was 'Old Hook Norton'. Martin
Quartermain, "born and bred in Hook Norton", brought a truly
charming collection of photographs, collected over the years
by John and Beryl Gibbs, depicting scenes from 'Hooky',

which went as far back as the end of the 19th Century and some up to the 60's and
early 70's, when Martin was a child. His family, who have lived there for four
generations, have seen great changes in the village, not least the dismantling of the
railway viaducts and the extensive building which has taken place since the 50's.

Sibford Stores & Post Office, Sibford Ferris

OX15 5RG

Telephone 01295 788317 / 788348

YOUR LOCAL CONVENIENCE STORE AND NEWSAGENT

We deliver newspapers and magazines 7 days a week to all the surrounding area.
Place your regular order today, whether for 1 day a week or 7. Always a wide
selection of magazines available, specialist titles available to order.

Chilled & Frozen foods, groceries, cigarettes, beers, wines and spirits, fresh fruit
and vegetables, pet foods, household goods, toiletries & medical requisites and
lots, lots more.....

National Lottery, Photocopying, fax service, dry cleaning

We will also undertake your mailings for you, just ask.

Always an excellent selection of Hook Norton bottled beers in stock.

Telephone your grocery order for free local delivery.

OPENING HOURS

Monday to Saturday 6.00am to 8.00pm

Sunday 6.00am to 4.00pm

PLEASE SUPPORT YOUR LOCAL POST OFFICE, THERE ARE LOTS OF
PRODUCTS AND SERVICES AVAILABLE ON YOUR DOORSTEP

We looked back in time at the somehow restful sepia photos, of people living out their lives all those years ago, and his commentary on the individual slides was just what was needed to learn a little more about individuals and events. Events there certainly were: fêtes and flower shows, club days, school plays, the celebrations for George V's Coronation, Remembrance Day marches, the opening of the Memorial Hall.

Although the pictures of thatched cottages and narrow country lanes, a horse peering inquisitively over a fence, children playing in the streets, long dresses and beautiful hats evoked a sense of innocence and tranquillity, we were reminded that this has always been a busy village, with the practical side depicted in the farriers' businesses, the ironstone works, the pig slaughterer with his victims at his feet and the graphic photo of the butcher's shop.

The most unusual feature of the village was the Hook Norton Electrical Company, whose staff of two provided power long before the National Grid was even dreamed of!

Alongside happy times there were some disasters: a hailstorm on a Sunday morning in 1927 which shattered windows, a fire which left the owners of a cottage standing bereft in their lost dining room, and a very nasty car accident.

We were given the impression of a constantly lively and energetic village, always moving with the times, and it was a privilege to see these long gone people in their homes. The good thing is that we can be there in five minutes and see a lot of the unchanged views for ourselves!

The next meeting will be held at 8 p.m. on Thursday, 16th May, (doors open 7.30 p.m.) and Gerald Lesinski will give the second part of his talk on 'Ceremonial Duties'.

Anyone interested in going to the study day on water power at Mapledurham House and Watermill, afterwards at the Caversham Heath Golf Club, on 18th May, please contact Diana Hughes (780506) for details.

For Practical Garden Assistance

Please contact Nick Taylor

07425136992

johnnicktaylor31@gmail.com

01295 680206

01295 788397

All types of garden
work undertaken

PIT STOP CATERING

Sibford School Car Park

Every Tuesday evening

between 5.30 and 8 pm.

With

FISH&CHIPS

SOUTHERN FRIED

CHICKEN & CHIPS

PIE & CHIPS

PLUS a "Special Meal" every week

SUSANNAH PHILLIPS

The death took place on 25th March in Cambridge of former Burdrop resident, Susannah Phillips at the age of 103. Susannah was born in November 1909 into a distinguished military family, her father, General Sir Reginald Byng-Stephens at one time being the oldest surviving general in the British army. Her life started in Colchester but much of her childhood was spent with her mother, sister and brother in her grandparents' house in Lechlade as part of a close-knit and happy family. Education by a governess left her with a considerable knowledge of history, a love of literature, an appreciation of fine writing, a natural command of phrase and a wonderful letter-writer. Susannah was a singularly beautiful young woman and retained her good looks into her last years. She married Patrick Phillips a highly talented young artist. When World War II started, Patrick was called up into the Camouflage Corps and was abroad for five years. During this time Susannah and her three children lived with her parents, back in Lechlade and she helped with War Work on the land.

The war over, the family bought a small-holding in Wiltshire to which was added a working water-mill. With her husband away all week as co-principal of an art school in London, Susannah became a knowledgeable farmer, gathering together a small herd of Jersey cows to which she added a bull which she hand-reared after an accident as a calf. Circumstances brought country life to an end and for some years the family lived in a tiny flat in Melbury Road in London where her talents were diverted to organising the embroidering of kneelers for Chelsea Old Church and as Librarian of the London Bach Society which involved the organisation of all music for the choir and where she became a surrogate mother to many of the choir members.

Susannah's marriage to Patrick was very close and they presided over a happy family atmosphere. Later they were able to move to Malden in Essex but Patrick, by now a well known and successful artist died after a short illness in 1976. Shortly after this, with her three children married, she moved to half of what is now Enoch Cottage, Burdrop to be near her daughter Tina Frith and husband Colin who lived in Barn Close also her distinguished younger sister Dame Anne Stephens who had retired as Commandant of the Women's RAF and who lived in Sibford Ferris. Together they had a wide circle of friends in the area and Susannah was soon absorbed into this and took part in many village activities, especially being a very supportive member of Holy Trinity Church.

Illness forced Susannah to live in a care home near her elder daughter in Cambridge where she was surrounded by care and kindness and was a much loved and loving member of her final community.

THE VILLAGE SHOP HOOK NORTON

NATIONAL LOTTERY

Grocery - Greengrocery - Bakery
Wines - Spirits - Confectionary
Newspapers - Magazines - Cards
Video Rental - Bottled Gas
Open Monday to Friday
7 am to 8 pm
Saturday 8 am to 8 pm
Sunday 8 am to 6 pm
Telephone: 01608 737245

Micks Sticks

Fire Lighting Wood For Sale
£2.50 per big bag
Call in anytime and ask for
Mick Canning, at
The Old Malt House,
Sibford Ferris
Tel: 01295 780321

VILLAGE HALL NEWS

VILLAGE FAYRE and DOG SHOW will be held on Saturday JUNE 15th 2013. Any ideas or offers of help - do contact Ginny on 01295 780373. We would love to put on an exciting afternoon for the Fayre but our small committee cannot do it without help.

VILLAGE LOTTERY As part of our continual fundraising, Muriel is starting the lottery again from April. To sign up please call her on 01295 780025 and maybe win some cash prizes.

Our BOOKING SECRETARY at present is Anita on 01295 788557

Support Oxfordshire Artweeks 2013

Maxine Chandler, a local artist is showing as part of Artweeks 2013, a collection of freestanding garden and ornamental stained glass as well as a collection of acrylic paintings. Artwork will be displayed in garden and studio and Maxine will be working on new material during the course of the week and will be demonstrating the art of stained glass. Please come and support your local artist.

18th to 27th May 2013; 12pm to 6pm at 6 Shepherds Close, Burdrop
www.maxinechandler.com

WELCOME TO SIBFORD

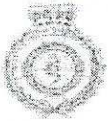
If you are a new resident of Sibford and have not yet received a copy of the "Welcome to Sibford" booklet, please telephone Ivor Hopkyns on 788367 (Gower or Burdrop) or Nic Durrant on 788865 (Ferris), and a copy will be delivered to you. The information will help to make you feel at home - by acquainting you with the services, schools, clubs and societies that are currently active in the villages.

Serenity Beautiful Bodies New Spa Treatment Experience

You can enjoy Being Pampered at Gautherns Barn, Sibford Gower

Pamper Days, Hen Spa Experiences, Yummy Mummy Days
Gautherns Barn, Sibford Gower, Oxfordshire, OX15 5RY

Email: joycoles@tiscali.co.uk www.serenitybeautifulbodies.co.uk
Please call 07507 165218 / 07790 262573 for your appointment



South Central Ambulance Service **NHS**

NHS Foundation Trust

Epwell Community First Responders OPEN DAY

Saturday 11th May 12 noon until 4pm Epwell Village Hall

- Come and meet the Epwell Community Responders
- Look at the life saving equipment carried
- Have a look around an Ambulance and Response Car
- Learn how the defibrillator works
- Learn how to do CPR and Recovery Position
- Refreshments – Tea, Coffee and Cake • BBQ • Raffle

For more details contact Julia on 01295 780580

(In memory Of Vaughan Castle valued CFR)

The Old Lion
Coffee Shop
at the Sun Inn
Hook Norton

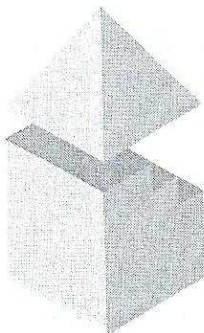


Open seven days
a week 9am - 4pm
Breakfast served
till 11am daily

Serving the finest coffees, teas and hot chocolate with
locally produced cakes, freshly baked scones and biscuits
A selection of hot (until 2pm) and cold food is
available to eat in or take away.

Why not pop in and give us a try?
We offer comfy seating and free WiFi

Give us a call on 01408 727520 and join us on Facebook at www.facebook.com/TheOldLionCoffeeShop



DAVID BOVILL ARCHITECTURAL AND PLANNING SERVICES

Providing a personal service from Design through Planning
and Building Regulations, and beyond if required

Specialising in Extensions, Loft Extensions and Listed
Buildings work

Please phone or e-mail to arrange a free initial consultation

01869 347906

davidbovill@btinternet.com

Charity Quiz Night for Dogs for the Disabled

Sunday 5th May at 8.00 p.m.

A special charity quiz night has been organised which will take place at the

Wykham Arms on Sunday 5th May.

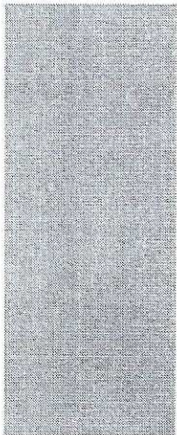
Maximum team size will be 6 people with a team entry fee of £6.00.

The theme for the night will be the past 50 years with one general knowledge question from each of the years from 1964 – 2013.

In addition to the quiz there will be a charity raffle with all proceeds being donated to Banbury based Dogs for the Disabled.

There's no need to book; simply turn up on the night.

Alice and Gordon would like to say thank you for all the cards, gifts and flowers received on the occasion of their diamond anniversary - and we heard from the Queen!

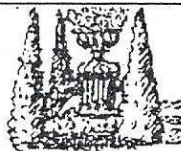


C. A. Berger

Painting & Decorating
Interiors & Exteriors
Residential & Commercial
Carpentry Repairs
and
Property Maintenance

Mobile: 07875 212 315

Office Tel/Fax:
01295 738633



BED AND BREAKFAST

Buttslade House, Sibford Gower
offers supremely comfortable en suite
accommodation in the charming setting
of a tranquil English country garden.

Contact Diana Thompson
01295 788818

Or diana@buttsladehouse.co.uk
www.buttsladehouse.co.uk

This was our AGM. Secretary Lynda Conway gave a full and colourful account of our Meetings and Events over the past year. President Glennis Hardman followed with her address in which she thanked the Committee for its enthusiasm and unfailing support and the Members for the many tasks that they carry out to ensure the smooth running of Sibford WI. The Committee for 2013/14 is as follows. Glennis Hardman (President), Lynda Conway (Secretary), Rosemary Neal (Treasurer), Mary Hill, Valerie Powell and Jan Warner. End of year prizes were presented for the most points earned in respect of the monthly competitions. Jan Warner came first, Kathleen Winter second and Valerie Taylor third. Mary Hill, Theresa Tovell and Kathleen Winter ran a laden bring & buy stall resulting in a pleasing profit for our funds. Norma Allen and Ann Benham served a delicious tea.

Members and many people in the Sibfords were deeply concerned when member Barbara and husband Bill Crabtree's Lancashire



The Firs Garage

www.firs-garage.com

Family business established 1960



Tel: 01608 737349 / 737641

Hook Norton, OX15 5DD



All-new Mitsubishi Outlander 4x4

We look forward to seeing you, the kettle is

Extensive range of new and used cars & 4x4's:
petrol, diesel & electric
Part exchange welcome

Service
MOT Parts
Bodyshop
Fuel Shop

**ALL MAKES
SERVICING**
COMPETITIVE PRICES

Heeler dog, Minty, disappeared without trace over three years ago. Because she was micro-chipped, they never completely gave up hope of her being found. However, it still came as a surprise when they received a telephone call one afternoon in January to say that she had been picked up by a dog warden in Northampton and was joyfully reunited with her rightful owners. In the meantime, they had adopted another Heeler, Dizzy. Fortunately, the two dogs get on well together. At teatime, Bill arrived and we had the pleasure of meeting both dogs. Bill and Barbara told us about the breed, the story of Minty's disappearance and recovery and the differing personalities of their delightful pets. Although now elderly and grey, Minty is in good health and an equal match for the younger Dizzy. The two little dogs behaved perfectly, relished being the centre of attention and generally enchanted us all.

Our next Meeting is on Tuesday, 14th May. Rosemary Neal will entertain us and Lynda Conway will take us through the 2013 Resolution 'Decline of our High Streets and Town Centres' to be debated and voted on at the National AGM in Cardiff on 1st June. Competition 'A Wine Glass'.

Glennis Hardman



villagefriend.com

*The new rural community website
for local people, by local people*

NOW 100% FREE !!!

WANT TO PROMOTE A COMMUNITY EVENT? USE US! ITS FREE!

WANT TO BUY OR SELL STUFF EBAY STYLE? USE US! ITS FREE!

WANT TO PROMOTE YOUR BUSINESS? USE US! ITS FREE!

*Local community events & info, buy & sell locally, promote your local business or service,
web-page sized adverts, up to 8 free images/photos, up to 3000 characters of text,
Google map of where you are, a link to your website if you have one,
people can leave testimonials, social networking links to Facebook & Twitter, etc*

Take a look for yourself!

villagefriend.com





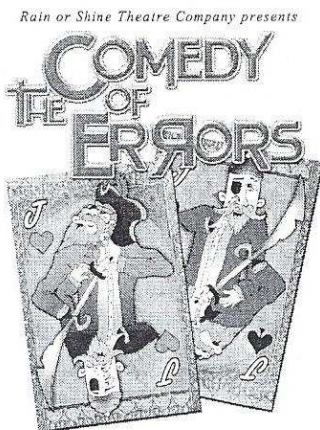
**Rain or Shine Theatre
Company present
The Comedy of Errors**

Sibford School is delighted to once again be hosting The Rain or Shine Theatre Company as part of its annual Festival of Theatre. This year's production, The Comedy Errors, will be performed in the school's Holly House Garden on Wednesday 26 June when the company's nine professional actors will re-create the comical confusion and chaotic capers of Shakespeare's hilarious masterpiece of mistaken identity.

Combining adventure, human folly, farce, romance and suspense, the Bard's clever and original plot shows a high degree of genius and creativity and is suitable for children and adults alike. Tickets cost £12.50 (adult), £10.50 (concession), £6 (child) and are available from the school on 01295 781216 or through the website:

www.sibford.oxon.sch.uk/news-events/whats-on/

The performance will start at 7.30pm and the grounds will open at 6.30pm for picnics. In the event of bad weather the event will be held inside.



**Savills support rugby
team**

Nicholas Rudge from Savills in Banbury said:
"As a business we are very keen to support local

**Victoria Smith
MASSAGE THERAPIST
@ Serenity, Sibford Gower**
*"Life takes it out of you, but
Massage puts it back"*
07974 231571

**Bed & Breakfast
AGDON FARM
Nr Brailes**
Comfortable rooms
in old stone farmhouse
**Tel: Maggie Cripps
01608 685226**

schools and we are delighted to be adding our support to Sibford's rugby players."

Pictured: Sibford rugby players model their new jackets. Centre: Nicholas Rudge from Savills and first team captain Adam Cooley.

The next Sibford School Open Morning will take place on 3 May starting at 10am. If you're considering sending your child to Sibford School in September 2013 or 2014, here's an opportunity to find out more. Head Michael Goodwin will give a presentation about the school after which pupils will take visitors on a guided tour of the campus. For those interested in boarding, there will also be a chance to visit one of the boarding houses. Sibford School is a co-education day and boarding school and is home to more than 400 pupils aged between 3 and 18. For further information contact admissions officer, Elspeth Gregory, on 01295 781203 or visit www.sibfordschool.co.uk

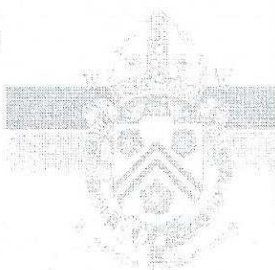
May Half Term Activities

Sibford School's 'Fun in the Country' holiday club returns in May Half Term from Tuesday 28 May – Friday 31 May. 'Fun in the Country' is open to all children aged between 5 and 11-years-old. Activities include arts and crafts, music and drama, cookery, sports and outdoor activities. There will also be the opportunity to swim in Sibford's 25m indoor pool. Cost is £28 per day. For further details or to obtain a booking form please contact Elspeth Gregory on 01295 781203. Looking ahead, the club will be running during the summer holidays from July 22 ~ August 23 (*weekdays only*).

Damian and Debbie

Welcome you to enjoy the atmosphere
of our 16th century thatched Inn.

- Bar and a la carte menus
available lunch & dinner.
- Excellent Sunday lunch-
to suit the weather!
- New food and wine takeaway
menu.
- Wednesday steak and wine
night £15.00
- Selection of fine wines and real
cask ales.
- Happy hour and a half every
Wednesday evening!
- Gift vouchers available.



THE
WYKHAM
ARMS

Temple Mill Road
Sibford Gower
Nr. Banbury
OX15 5RX

Tel: 01295 788808 / 07

Take a look at our new
website
www.wykhamarms.co.uk

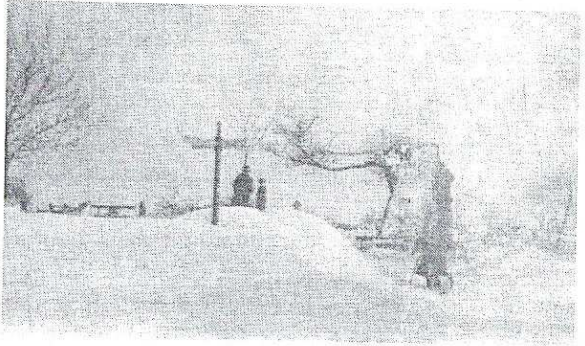
email.
info@wykhamarms.co.uk

Opening Times
12.00am-3.00pm
6.00pm-11.30pm

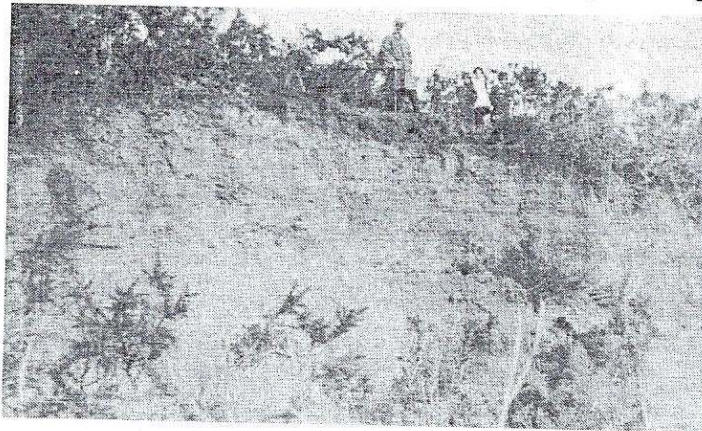
Bar only Sunday Night
Closed all day Monday
(Except bank holidays)

The Tyne Hill Landslide

When looking for the date of the landslide on Tyne Hill shown (behind the many villagers viewing it) on the cover of last months Sibford Scene I came across photos of the heavy snow which immediately preceded the slide. As this year, we have had unusual-



ly cold and snowy weather in March. I was interested to see the date of the photos was March 28th 1916, so the landslide was shortly after with the snow melt. It completely blocked the Brailes road and it wasn't cleared until the men came back from the Great War when it was shovelled into the field below. The busses had to go through Sibford Gower



because of the blockage and they have done so ever since.

Above - The old Elm and the snowdrifts.

Left - The head of the landslip.

FRANCIS MORDAUNT MCFHP MAFHP

*Member of the Open College of Foot Health Professionals
Member of the British Association of Foot Health Professionals*

FOOT HEALTH PROFESSIONAL

To enquire about a home visit please

telephone: 01295 730615

Professional Foot Care in Your Own Home

BIKE REPAIRS & SERVICING



**General servicing
Repairs**

Cleaning & maintenance

All makes and types of bike

Reasonable rates, speedy service

For all your bike repair needs, call: 01295 780355

Sibford Walking Group

29 April 10.15 Village Hall car park or please contact Sue about meeting point at 10.30. Shutford circular walk Duration approx 2 hours
PLEASE NOTE CHANGE FROM PREVIOUS ANNOUNCEMENT
Monday 13th May 10.15 Village Hall car park, 10.30 meeting point just north of Pear Tree pub by 30 mph signs on Clay Bank. Circular walk via Ascott and Great Rollright - Duration 2 1/2 hours to Rollright. Short version lunch Wyatts, energetic ones returning to Hook Norton, (approx 4 hours to HN) Long version suggest sandwiches
27 May Circular walk round Whichford woods, hopefully with blue-bells still visible; Village Hall car park 10.15 or contact Sue for departure point

3 June tba

Please confirm attendance to Sue Bannister on 01295 780365 or sebannister@gmail.com as well as to get precise details of starting point. If you wish to receive the programme by email, please let her know. Given the wet and muddy conditions a stick or walking poles are recommended.

Serenity at Sibford

Gautherns Barn
Sibford Gower OX15 5RY
01295 788463

Environ Skincare and Facials are now at Serenity

Using proven, cutting-edge technology and skincare products for men, women and children all skin types and ages can be effectively treated with remarkable results

If you know of anyone who has young, problem skin Jo is now offering a full skin analysis covering a home-care guide of products to use, treatments available in salon and make-up to help conceal, repair and feel more confident

We now have Lycon Hot Wax for more comfortable underarm, bikini and facial waxing

We have a beautiful Jane Iredale Mineral Make-up Tester Stand in reception

come and have a play or book a one-to-one with Jo to re-vamp your make-up routine!

Open Monday-Saturday

TO ALL RESIDENTS OF SIBFORD GOWER & BURDROP

ANNUAL PARISH MEETING

to be held in the hall of Sibford Gower Endowed Primary School

on 29th May 2013 commencing at 7.30pm

under the Chairmanship of Dr Oswyn Murray (Chairman of Sibford Gower Parish Council)

You are invited to take part. The Parish Meeting may by law discuss all parish affairs and pass resolutions about them. Invitations to be present, speak and answer questions have been extended to County & District Councillor George Reynolds, Oxfordshire Highways and Thames Valley Police.

Matters as set out below will be on the agenda:-

Minutes of the Annual Parish Meeting held on 25th May 2012

Matters arising.

Chairman's Report.

Clerk's and Financial Report.

Thames Valley Police Matters

Highway & Footpath Matters.

Report by The Town Estate Charity.

Report by the Neighbourhood Watch Representative.

Village Hall Report.

The Sibfords Community Plan

Any Other Business.

The Parish Council very much hopes that you will be able to be present and, if you wish, voice any comments or questions that you may have.

Peter Hardman Clerk to Sibford Gower Parish Council



CARPENTRY • PLUMBING

ELECTRICS • HOUSEHOLD REPAIRS

**No need to call in four
different contractors ...Call me!**

For your building, DIY and home improvement needs
KITCHEN & BATHROOM FITTING • HEATING INSTALLATION
CARPENTRY • PLUMBING • ELECTRICS • SECURITY ... and more

DIY? Don't do it yourself ...Call me!

For a comprehensive and reliable local service,

Call HUGO SEELY on 01295 780355

FREE NO-OBLIGATION ESTIMATES

Trading in the Sibfords since 1992 - Excellent local references available

May 2013

The monthly update says "Neighbourhood Watch is all about people getting together with their neighbours to take action and reduce local crime and disorder". If you see anyone acting suspiciously please phone the Police on 101 with as much information as possible, if you think a crime is being committed or the situation requires immediate attention phone 999. Please help us to make the Sibfords unattractive to unwanted visitors. Number plates are being removed from vehicles. You can fit security screws, theft resistant number plates and park in your garage if you are lucky enough to have one, this would also allow more road space for residents without one. Stolen number plates may be used to aid secondary crimes such as: theft of fuel from forecourts, avoidance of congestion charges, parking fines, vehicle cloning and burglary. Please report their loss.

Dogs in the Meeting House grounds.

It has been noted that the instances of dog fouling in the Meeting House grounds in Sibford Gower has been increasing of late. While it is a nice cut through from the road to the footpath and no body wants access reduced, it is private property so please make sure that all dogs are on leads and that all mess is picked up and taken home.

**LOGS, HAY,
STRAW
Garden Manure
Half pigs for the
freezer (limited)
Antony Sabin
01295788421**

Cottage to Let on the edge of Sibford Gower

2 bedroom charming Cottage with countryside views and pretty Garden.

Double aspect Sitting Room, Dining Room, Breakfast room/fully fitted Kitchen (including fridge and washing machine), Hallway, downstairs Toilet.

Upstairs Bathroom with over bath Shower, large double aspect Bedroom plus further double Bedroom, Large Landing/Study area. Plenty of Wardrobes and cupboards throughout the cottage. Oil fired heating, new boiler. Attached Garage. Reasonable rent, available May/June
Tel : 01295 788848 or email : seagulllodge@gmail.com



Sibford Horticultural Society

Our last meeting saw Gerald Sinclair talk about hemerocalis. During an entertaining and informative talk we learnt where they came from and how plant breeders got them to the huge range of colours that we have today. Pleasing to learn that Banbury played a big part in that. It was obvious that the day lily is a great favourite with Mr Sinclair as he has a national collection of them at his nursery at Mixbury.

Our next meeting is our trip to Coton Manor on Wednesday May 8th. The coach will leave the Village Hall at 2pm and will leave Coton Manor at 5.30pm to return home. Entrance to Coton Manor is £5 and the coach cost is £5 for Society members and £7 for non members. Names and numbers to Jupe Marshall, 780348 johnandjupe@btinternet.com ASAP

We have our first **Spring Show and Plant Sale on Saturday May 18th** 2.30 - 4.00pm at the Village Hall. Everyone should have got a schedule with last months Sibford Scene (if not there will be some spares available at the Village Shop in early May). Please do try and find something to enter and support this new venture. We especially want children to have a go as the numbers entering in the last few shows have been unbelievably low.

Entry Night is Wednesday 15th May 7

- 9 pm at the Village Hall. If you have never entered before and need guidance do get in touch with a committee member. The recipe for Cherry Scones was left out of the schedule so please use the

YOGA

All levels welcome

Starting Tuesday 16th April

9.00 – 10.00am

In the Village Hall

Any enquiries to

Juliette – 01295 788 650

Juliette53@btinternet.com



OPUS
Property
Services Ltd

01295 780652
07816592124

All aspects of property maintenance and refurbishment undertaken from replacement light bulbs and tap washers to new ceilings and floors.

Plumbing, tiling, wood flooring, floor renovation, under floor heating, plastering, electrics, decorating, damp proofing, carpentry, locks, drains, kitchens, bathrooms etc

Call us or visit our website for more information:
www.opusps.co.uk

one below. Any plants for the sale can be brought up to the Hall on the Saturday morning. Please come and support the Horticultural Society.

Cherry Scones - makes 8

225g (8oz) Self raising flour with a pinch of salt

50g (2oz) margarine

25g (1oz) caster sugar

50g (2oz) glace cherries

1 medium egg beaten with sufficient milk to make 150ml (quarter pint)

Mix the flour and salt and rub in the margarine. Stir in the sugar and cherries.

Add the egg and milk mixture reserving a little for brushing the tops. Knead lightly on a floured surface and roll out to 1cm (half an inch) thick and cut into rounds. Brush the tops with the reserved egg and milk mixture and bake for about 10 minutes at 220C (425F)



**QUALITY FISH
DIRECT FROM
GRIMSBY MARKET-**

Proprietor: T.P.Martin

Tel: 07812 361853

**Best fresh fish and shell fish to your
area direct from Grimsby on the
Lincolnshire coast**

**I'll be at Sibford Village Hall car park
EVERY MONDAY from
approximately 4pm till 5.30pm**

Miss 'T' Catering.

Catering for events such as:

**Anniversaries, Weddings,
Christenings, Birthday parties,
Funerals**

And private dinner parties.

~.~.~

Also available

Cutlery and Crockery Hire.

Contact Victoria Taylor on:

Mob: 07841 910037

Home: 01295 788924

Pilates

**Relax, Re-condition and
Re-energise**

Small Group Intensive Courses

Individual Sessions

by appointment with

Madeleine Wilson B.SC., M.SC

Master Mat &

Studio Instructor

Personal Trainer

07905 953 300 or

01295 780 279

email

mwl@linuxwaves.com

**Richard Wallington
Builder**

Block Paver Drives a Speciality

Also Extensions, Patios

Fencing etc.

High Quality Work, Free Estimates

01295 780705 07743 932545

(Sibford Gower) (Mobile)

HOLY TRINITY CHURCH NEWS

www.wykehambenefice.org.uk

It is not often that March comes in like a lion and out like a polar bear, but that is what it felt like this year. The freezing conditions though, and treacherous surfaces didn't seem to make much difference to our congregations at Easter church services. Palm Sunday was memorable and those who are able to peep at the new Benefice website which now absorbs the old Sibford site will see lovely pictures of Percy the Epwell donkey leading the pilgrimage round the village also a good number of followers.

Easter is of course the most important festival of the Christian's year and the services over the holiday period were profoundly supportive of this. At the Easter Day morning service we had the additional benefit of the Rectory quartet, those magnificent singers from Oxford, past and present with whom we are blessed when they are visiting their new home. We will soon be hearing the full Worcester College choir of which Michael is a part,



Sarah Walker
Vivienne Nott

fresh flowers, fresh ideas
Gorgeous bouquets & arrangements
Wedding bouquets, churches,
marquees and receptions
Flowers for supper parties,
house parties and celebrations
Funerals and memorials

Contact :
Sarah :01295 788595 Viv:01608 652819

GODSWELL NATURAL THERAPY CENTRE
Godswell Lodge, Church Street, Bloxham, OX15 4ES
Tel: 0844 477 8595

Acupuncture ; Body & Face Therapies
Bowen Technique ; Chiropody/Podiatry ; Clinical Pilates ;
Cognitive Behavioural Therapy (CBT) ;
Continence Advice (for women and men) ; Counselling ;
Cranio-Sacral Therapy ; Herbal Medicine ;
Homeopathy ; Hypnotherapy ;
Lymphatic Drainage Massage ;
Massage (inc deep tissue, hot stone and Indian Head) ;
McTimoney-Corley Spinal Therapy ;
Nutritional Therapy ;
Osteopathy ; Reflexology & Remedial Massage

Fully qualified and professional therapists

See website for further details:-
www.bloxhamsurgerv.co.uk
(follow the link to Godswell NTC)



FARMHOUSE
BED AND BREAKFAST
GRANGE FARM,
SWALCLIFFE

Enjoy warm hospitality & peaceful
surroundings in our comfortable
18th C Farmhouse

CONTACT BARBARA TAYLOR
TEL.01295 780206 or 0771 2895728
WWW.swalcliffegrange.com



Contributions for the
June
Sibford Scene
to the Editor by
May 14th

singing Choral Evensong followed by a concert in Broughton church at 5.30 pm and 7.30 pm respectively on Thursday 13th June.

On Thursday May 2nd at 7.45pm at Handywater House in Sibford there will be a discussion on Mark's gospel lead by Rev Ronald Hawkes where, he says "we can share impressions, surprises, meanings ... anything and everything." Read the gospel first if possible and bring your Bible with you.

The newly formed Sibford choir held its first practice on Wednesday 10th April and has been meeting on Wednesdays since at 6 pm. under its new banner "Let's get Sibford singing". Additional choristers are needed and we will be singing religious and non-religious music under Ronald's direction, Peter Hardman continuing as our organist for services, supported from time to time by Liz and sometimes by Ronald.

Our recent Family service was attended by a small number of families with children and was a lively occasion, popular with adults and children but Ronald has asked for views on having these services at times acceptable to more people, perhaps occasional afternoons followed by tea. Views on these and indeed all services would be appreciated by Ronald; a telephone call to 780555 or an email would avoid finding him out and about in the Benefice, which with 6 parishes to attend to is a normal occurrence.

The Carice Singers concert in aid of church expenses was a singular success and as the website discloses "....a group of sixteen young singers - who are all reading music at university - came to Sibford to enthrall, entertain and inspire us all. The church was packed and the audience also came from surrounding villages, as the word spread that here was an evening not to be missed. Their young voices filled the church with a clarity and purity one usually only hears in a vast cathedral. The choice of music was charming, ranging from Bach, Bruckner and Britten in the first half, and moving on to lighter music by English composers of the 19th and 20th century - Elgar, Stanford, Vaughan Williams, Warlock, Holst and Percy Grainger...." The group is founded and conducted by George Parris, who grew up near Shipston-on-Stour. With a very generous collection at the end of the concert, a splendid £1,200 was raised for the church.

The first of the season's Coffee Mornings was held on Saturday 27th April. These will be held in church each month on Saturday mornings to be announced from 10.00 am to 12 noon. Do look out for these, very happy gatherings of friends and neighbours with delicious cakes and other things to buy.

Church Services

Society of Friends		Sunday at 10.30 am
Methodist		Sunday at 11.00 am
Roman Catholic Mass	Wroxton	Sunday at 9.00 am
	Brailes	Sunday at 11.30 am
Baptist	Hook Norton	Sunday at 10.30 am

Holy Trinity Church Services

May 5th Benefice Eucharist 10am at Swalecliffe

May 9th Ascension Day. Holy Communion 8pm at Broughton

May 12th PET SERVICE 3PM. at Sibford all well behaved animals and their owners welcomed.

May 19th Pentecost. Holy Communion 9.30am

May 26th Trinity Sunday.

Family Communion 11am followed by Bring and Share Lunch.

Methodist Chapel Preachers for May

Sunday 5th Rev Broomfield

Sunday 12th Rev Beuzeval

Sunday 18th Rev Bywater

Sunday 26th Rev Rolfe



RED HORSE VALE LTD

All Types of Fuel, Coal, Smokeless, Gas,

Logs, Kindling, Barbecue Needs

Central Heating Oil, Oil Tanks & Coal Bunkers

Landscape & Building Materials, Garden Centre &

Garden Supplies, Farm & Country Sundries

Equestrian Products, Horse & Pet Feeds

Open: Monday - Saturday 8am - 5pm

Windmill Farm, Banbury Road (A422),

Oxhill, Warwickshire CV35 0RP

Tel: 01926642832

Fax: 01926 642 853

Oxon Computers

Get IT sorted!..

- ◆ PC speed up service
- ◆ quick repairs & upgrades
- ◆ Help & advice
- ◆ malware Zapped!!!

CompTIA IT Technician

www.oxoncomputers.co.uk

Get IT sorted!..

Tel: 01295 788766

email: admin@oxoncomputers.co.uk

Sibford Bus Services

Cherwell Rural Dial-A-Ride Scheme

A mini bus with tail-lift to take **elderly or disabled people** and escort to Banbury (max fare £1.60) Door-to-Door service. Book at least one day in advance. Operates on Wednesdays & Thursdays. Phone 263777 for details.

BCTA also takes bookings for groups of 8 or more on a weekly/monthly basis (Wednesdays & Thursdays) to and from Banbury. Tel; 263777

Stagecoach – Timetable commencing 31st May 2009

Mondays to Saturdays (No services on Sundays or Public Holidays)

Bus 50A. From Banbury towards Stratford-upon-Avon

Banbury, Bus Station	08.30	10.55	12.45	14.26	16.05	17.10	18.10
Sibford Ferris, Cross Roads	08.52	11.17	13.07	14.48	16.27	17.32	18.32
Sibford Gower, School	08.55	11.20	13.10	14.51	16.30	17.35	18.35
Shipston,	09.15	11.40	13.35	15.11	16.50	17.55	18.55
Stratford on Avon, Wood St.	09.40	12.09	14.04	15.40	17.19	18.24	19.24

Bus 50A. From Stratford-upon-Avon towards Banbury

NS

Stratford on Avon, Wood St	06.20	07.10	09.05	11.10	13.10	15.10	16.24
Sibford Gower, School	07.04	07.55	09.56	11.56	13.56	15.56	17.14
Sibford Ferris, Cross Roads	07.07	07.58	09.59	11.59	13.59	15.59	17.17
Banbury, Bus Station	07.28	08.25	10.21	12.21	14.21	16.21	17.39

NS = Not Saturdays

All buses will operate low floor wheelchair accessible vehicles.

For complete details of all the stops that are served by service 50A, timetables are obtainable from the Tourist Information Centre in Castle Quay, Banbury.

Fares:-

Sibford Ferris & Sibford Gower to Banbury: Single £2.50 (Child£1.25)

Return £4.70 (Child £2.35)

Sibford Ferris & Sibford Gower to Stratford: Single £4.30 (Child £2.85)

Return £6.30 (Child £4.20)

Unlimited travel Cards are available for 1, 7 or 28 days but are regional and need to be bought in advance. Contact the Stagecoach sales office in Stratford tel; 01789 294155 for more details.

Calendar of Events

April

- Sat 27th Church Coffee Morning
Mon 29th Walking Group p15
Mon 29th Sibford Ferris Annual Parish Meeting 7.30pm Sports Hall
Classroom at Sibford School

May

- Fri 3rd Sibford School Open Morning p12
Sun 5th Charity Quiz at the Wykham Arms 8pm p9
Tue 7th Mens Breakfast Club meeting.
Tue 7th Friendship Club AGM p4
Wed 8th Horticultural Society Trip. 2.00pm from the Village Hall.p18
Wed 8th Mobile Library in the Sibfords (2.40 - 4.10pm)
Sat 11th First Responders in Epwell. 12 - 4 pm. P8
Mon 13th Sibfords Walking Group 10.15am Village Hall car park p15
Mon 13th Sibford Ferris Parish Council Meeting. 7.45pm Sports Hall room
Tue 14th W.I. Resolutions. P10
Wed 15th Spring Show Entries Night 7 - 9 at the Village Hall p18
Thu 16th Sibfords Society - Ceremonial Duties. Village Hall 7.30pm p4
Sat 18th Spring Show and Plant Sale 2.30 - 4.00pm at the Village Hall p18
Tue 21st Friendship Club Lunch p4
Wed 22nd Mobile Library in the Sibfords (2.40 - 4.10pm)
Mon 27th Sibfords Walking Group 10.15am Village Hall car park p15
Wed 29th Sibford Gower Annual Parish Meeting. 7.30pm, Primary School p16

June (part)

- Mon 3rd Sibford Gower Parish council meeting. Primary School.
Tue 4th Mens Breakfast Club meeting.
Wed 5th Mobile Library in the Sibfords (2.40 - 4.10pm)
Sat 15th Village Hall Fayre p7
Wed 19th Mobile Library in the Sibfords (2.40 - 4.10pm)
Wed 26th The Comedy of Errors in Holly House garden from 6.30pm p12

Cover picture The Old House, Sibford Ferris

Sibford Scene

Editor; Adrian Lamb. Grounds Farm, Sibford Ferris. 780380

e-mail adrian.lamb1@btconnect.com

Advertising; Ivor Hopkyns, Elmridge Farmhouse, Sibford Gower,

Banbury, Oxon. OX15 5RT. Tel 788367

e-mail sallyandivorhopkyns@hotmail.com