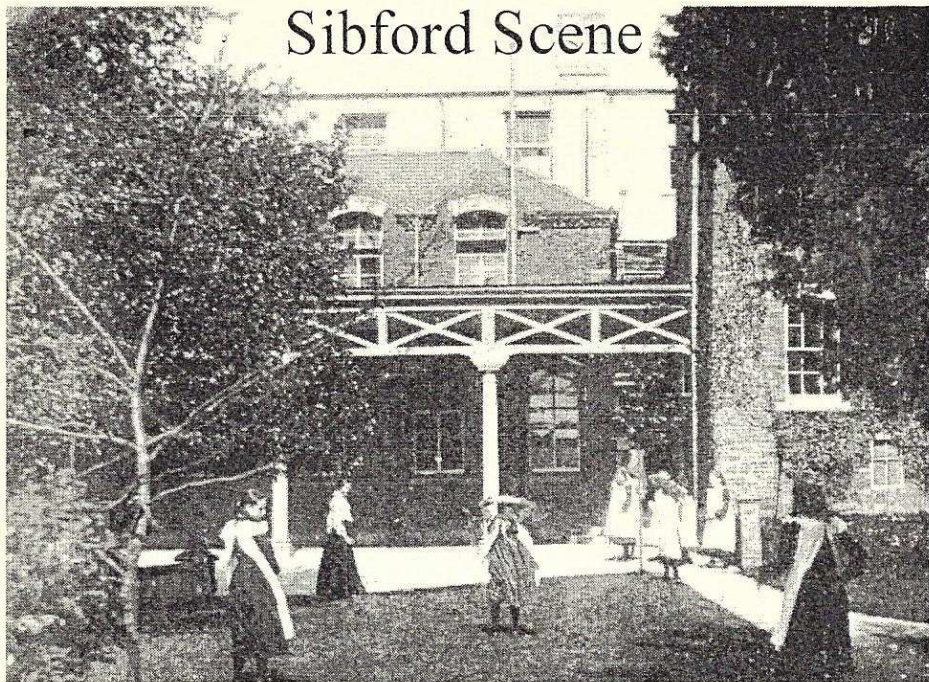


# Sibford Scene



February 2013

No. 349

## Primary School Jumble Sale

Saturday 26th January

## Ladies in Lavender

Village Hall Film Night Thursday 31st January 6.45 for 7.30 start

Next Film Night Thursday 28th February

Footpaths in paddock at Green Acres  
closed for one day only.

Sunday 10th February 2013

## Table Top Sale at Swalcliffe Village Hall

Sunday 10th February from 12 noon

## Nature Notes

Nov 24th This morning I saw what I think was a red kite on the ground just the other side of the new roadside fence beyond Broomhill Farm. I could have stopped the car for a better look but it would have flown.

Nov 27th We have had 3.98 inches of rain in the last 8 days (2-3 inches is about average for a month).

Dec 5th 2 cock and 3 hen bullfinches visited the bird table within a few minutes this morning. They come regularly now which is quite a change of habit as I used to think of them as a bird of the countryside and of course orchards, where they pecked the flower buds off the trees in the winter and early spring.

Dec 10th A female blackcap visited our bird table this morning. The first one this winter.

Dec 12th 16F (-8C) at 8 am. Heard fieldfares in our trees this morning but a spell of weather as cold as this would stop them getting any food from the grass fields and with so few berries left they would be forced to move on.

Dec 27th A mistle thrush has been singing loudly over Christmas. There may be more than one but it is difficult to be sure as they sing from so many different trees spread over a wide area. On mild days the nuthatches make their excited bubbly calls and



### HOLMBY HOUSE

### SIBFORD FERRIS

**A stunning setting for  
special celebrations**

### *From Buffets to Gourmet Dinners*

Formal dining for large groups

Garden parties Business meetings

Luxurious B & B

Self-catering accommodation

Tel/Fax: 01295 780104

[www.holmbyhouse.com](http://www.holmbyhouse.com)

[Sally.wass@btinternet.com](mailto:Sally.wass@btinternet.com)



Personalised design service and consultancy in  
your own home.

Beautiful bespoke Curtains, Roman & Roller  
Blinds & Soft Furnishings, handmade to the  
highest standard.

Advice on every kind of Fabric from numerous  
suppliers.

Stylish complimentary Cushions & Loose  
Covers.

Re-upholstery service.

Custom made Bedspreads & Headboards.

New Sofas & Chairs

Tel/Fax: 01295 788145

Email: [info@annwoolgrove.com](mailto:info@annwoolgrove.com)

[www.annwoolgrove.com](http://www.annwoolgrove.com)

the great tit "teacher teacher" song and of course the robin sings.

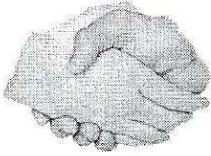
Jan 1st 2012 was a remarkable year for rainfall. The first three months only produced 3.45 inches (88mm) and hosepipe bans came into force in case it went on like that. The 9 months that followed produced considerably more rain than I have ever previously measured for a full year. The driest months were February with 0.92 inches (23mm) and March with 0.94 inches (24mm). The wettest, April with 6.36 inches (162mm) and November with 5.71 inches (145mm) and the total for the year was 41.33 inches (1050mm). The Met Office say that 2012 was the wettest year since records began for England and the second wettest for Great Britain as a whole. Another surprising thing is that with all this rain we have had so little thunder. Jan 3rd To put our record rainfall into perspective we hear from our granddaughter who is in South Island New Zealand, that she set off to walk in the mountains and met with violent thunderstorms that brought 600mm (23.64 inches) of rain in 2 days. We sometimes get less than that in a year.

Jan 14th I hear that 2 crossbills were seen recently in Sibford Ferris. I have never seen one but some were seen in Sibford Gower some years ago. 12 peewits have also been seen which would not have been noteworthy years ago when they came in huge numbers to feed on fields after straw had been burnt. What they found to eat there I don't know but it must have been well cooked.

Jan 15th A cock blackbird that comes to feed on our window ledge has an upper mandible that is only half as long as its lower one, which makes it difficult for it to pick up pieces of food. In spite of this it looks healthy.

Congratulations to  
Jean and Terry Bryant  
of Cotswold Close, Sibford  
Ferris who recently celebrated  
their 60th. (diamond) wedding  
anniversary.  
love Kaye, Linda & families.

Holiday Let  
For 1 or 2 people  
In quiet, self-contained  
annexe  
Contact Judy Abbott  
01295 780731



## Friendship Club

At the Club Meeting on Feb 6th we hope to have a speaker. I am waiting for confirmation.

By now the Club Members will have an idea what is happening during this year.

Please, if anyone would like to join our club, come along to a Meeting (1st Tuesday in the month 2-00p.m. In the Village Hall) and see what we are all about.

---

## 'Table Top' sale at Swalcliffe Village Hall

on Sunday the 10th of February, 12 noon till 4 p.m. if you would like to book a table (10% donation to the Village Hall) or just pop in for a tea or coffee! please contact Doug on 01295 780616  
[dougseymour7@btinternet.com](mailto:dougseymour7@btinternet.com)

Sibford Stores & Post Office  
Sibford Ferris  
OX15 5RG

Telephone 01295 788317 / 788348

**YOUR LOCAL CONVENIENCE STORE AND NEWSAGENT**

We deliver newspapers and magazines 7 days a week to all the surrounding area. Place your regular order today, whether for 1 day a week or 7. Always a wide selection of magazines available, specialist titles available to order.

Chilled & Frozen foods, groceries, cigarettes, beers, wines and spirits, fresh fruit and vegetables, pet foods, household goods, toiletries & medical requisites and lots, lots more.....

National Lottery, Photocopying, fax service, dry cleaning

We will also undertake your mailings for you, just ask.

Always an excellent selection of Hook Norton bottled beers in stock.

Telephone your grocery order for free local delivery.

**OPENING HOURS**

Monday to Saturday 6.00am to 8.00pm

Sunday 6.00am to 6.00pm

**PLEASE SUPPORT YOUR LOCAL POST OFFICE, THERE ARE LOTS OF PRODUCTS AND SERVICES AVAILABLE ON YOUR DOORSTEP**

## WELCOME TO SIBFORD

If you are a new resident of Sibford and have not yet received a copy of the "Welcome to Sibford" booklet, please telephone Ivor Hopkyns on 788367 (Gower or Burdrop) or Nikki Durrant on 788865 (Ferris), and a copy will be delivered to you. The information will help to make you feel at home - by acquainting you with the services, schools, clubs and societies that are currently active in the villages.

We would like to welcome Carolyn and Graham White who recently moved into Home close, Sibford Ferris. They have two children, Jamie 5 years and Ella 3, who are keen to meet children of a similar age. Carolyn and Graham are enthusiastic gardeners and look forward to taking part in the Horti Show this year.



### **Sibford Horticultural Society**

We hope you have remembered to take your winter photos ready to enter the photography classes in the Spring Show on Saturday 18th May. The Cookery and Children's classes will also be on that day with the Flower, Fruit and Veg and Handicrafts classes in the August show as usual. There is no meeting in February.

---

Sibford Village Hall would like to thank Bruce Woodall for donating the fine Christmas tree which has been illuminated in front of the Hall over the Christmas period..

For Practical Garden Assistance  
Please contact Nick Taylor  
07425136992  
johnnicktaylor31@gmail.com  
01295 680206  
01295 788397  
All types of garden  
work undertaken

### **PIT STOP CATERING**

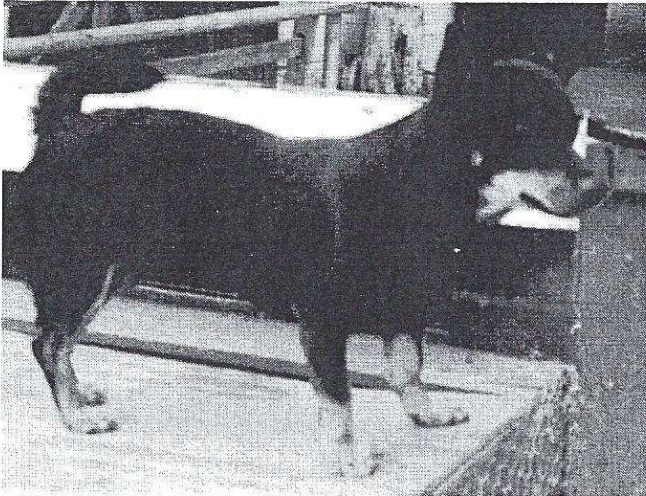
Sibford School Car Park  
Every Tuesday evening  
between 5.30 and 8 pm.

With

**FISH&CHIPS**  
**SOUTHERN FRIED**  
**CHICKEN & CHIPS**  
**PIE & CHIPS**

PLUS a "Special Meal" every week

We have been completely overwhelmed by all the messages we have received since the return home of our Lancashire Heeler dog Minty. We did not appreciate how much joy and happiness her return would bring to the wider community. Her story is that she went missing from Woodway Road, Sibford Ferris in February 2010, when she was ten years old - we had her as a six week old puppy. She was found in Northampton at the beginning of January this year - it is unusual, in this area, for a dog to be returned home after having been missing for so long. We do not forget and would like to thank all the many people who made so much effort to find her initially and do especially appreciate all the support we received from Lynn Simms, Wendy and Fred



Lewis both then and during last three years. Minty is fit and well and remembers her home in Sibford. Wherever she has been, she has been well cared for. We do recommend all pet owner to have their animals micro-chipped - Minty is proof that the system does work.

Barbara and Bill  
Crabtree

**THE VILLAGE SHOP  
HOOK NORTON**

**\*NATIONAL LOTTERY\***

Grocery - Greengrocery - Bakery  
Wines - Spirits - Confectionary  
Newspapers - Magazines - Cards  
Video Rental - Bottled Gas

Open Monday to Friday

7 am to 8 pm

Saturday 8 am to 8 pm

Sunday 8 am to 6 pm

Telephone: 01608 737245

**@ The Fits Garage**  
Hook Norton, Banbury, OX15 5DD  
Email: [theresa@graphics-direct.co.uk](mailto:theresa@graphics-direct.co.uk)  
T: 01608 730535 Fax: 01608 730271

**For all types of vinyl graphics & signage.**

Theresa Harper

## The Sibfords Community Plan and the Future

Following the Presentation of the Final Sibfords Community Plan on November 6th, 2012 the two Parish Councils have reviewed the Plan's findings. Their vision and the principal aims are set out below.

### The Vision

What is the vision for the villages? The Community Plan is, of course, the vision since it incorporates all your thoughts on what is best for the future; it is not simply a snapshot of the present. It suggests that you love your villages, and are broadly satisfied and appreciate the villages as they are.

### Aims

For a more specific set of aims and future proposals, the Plan points in the following directions:

- The villages should not become either retirement villages, or dormitory villages for the M40 corridor; they should remain active centres of employment and build on our strengths in terms of schools, farms, leisure and recreation centres, and small businesses.
- The Plan accepts a small increase of 10-20 houses over the next 20 years to promote this aim.
- The Plan recommends we actively promote business opportunities and seek to strengthen the 100-strong business community by encouraging networking, and if needed, by establishing a small business park.
- The Plan recommends we pursue superfast broadband options.
- The Plan seeks to publicise the attractions of the villages by publishing a guide.
- The Environment Group will pursue green options with vigour.
- We will seek to foster closer connections between the Parish Councils (including the possibility of amalgamation) and between all other village groups.
- The Plan recommends we survey the footpaths of the area and promote new links.
- The Plan recommends we investigate other concerns such as on-street parking, speeding, recycling and provision of dog bins.
- The Plan recommends we look for more play areas, especially in the Gower.

Without the Community Plan we could not have formulated these aims so clearly, or be able to present them so forcefully to the higher authorities. So, a big thanks to all of you for taking part in the creation of the Plan, and please be willing to come forward as volunteers in the pursuit of these aims.

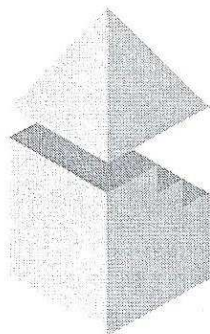
Oswyn Murray, Chair of Sibford Gower Parish Council  
Joanne Connor, Chair of Sibford Ferris Parish Council

### Micks Sticks

Fire Lighting Wood For Sale  
£2.50 per big bag  
Call in anytime and ask for  
Mick Canning, at  
The Old Malt House,  
Sibford Ferris  
Tel; 01295 780321

## Report of the Sibford Gower Parish Council Meeting – 14<sup>th</sup> January 2013

The Meeting was attended by four Parish Councillors (with apologies accepted from Cllr Alan Parkin who was unwell), District Cllr George Reynolds, four local residents and the Clerk. Matters arising: An approach to the Village Hall Committee to consider allowing off-street parking for residents to ease the problem of kerbside parking was met with the response that this would not be practicable in the light of the number of events held in the hall and the requirement of those attending needing the use of the car park. Chairman's Report: The Chairman referred briefly as to how matters stand with regard to The Bishop Blaize and, for the time being, the way forward rests with Cherwell District Council. With regard to the Swalcliffe Exchange Broadband Users Group the Clerk was instructed to approach Mr Tony More with regard to being appointed the Parish's Broadband Champion. Dr Murray said that he would report on other matters as the subjects occurred in the agenda. The Sibfords Community Plan: Mrs Sue Mattinson presented the Final Report which is available to residents. The Chairman expressed the thanks and appreciation of the Parish Council to Mrs Mattinson and Mr Richard Hartree for all the work that they had put in throughout the development of the Community Plan. The document prepared by the Chairs of the Ferris and Gower Parish Councils on the Vision, Key Aims and Future Proposals for the attention of the Parish Councils was formally approved for publication in the Sibford Scene and website. Clerk's Report: An approach to the Village Hall Committee to allow a bottle bank to be sited in the Village Hall car park was unsuccessful and discussions with the Ferris Parish Council are taking place to ascertain whether or not an alternative site for joint use may be available. Financial Matters: Following the resignation



### DAVID BOVILL

#### ARCHITECTURAL AND PLANNING SERVICES

Providing a personal service from Design through Planning and Building Regulations, and beyond if required

Specialising in Extensions, Loft Extensions and Listed Buildings work

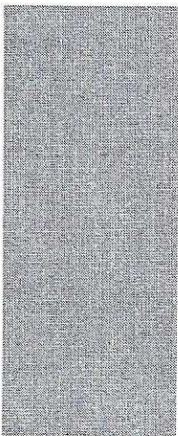
Please phone or e-mail to arrange a free initial consultation

01869 347906

davidbovill@btinternet.com



of Cllr Roger Alder and the co-option of Cllr Susan Bannister, the completion of a new bank mandate was approved. Planning Matters: Since the previous Parish Council Meeting two planning applications were approved and four applications had been approved by the District Council. Highway Matters: Oxfordshire Highways had been requested to improve the dropped kerb at the junction of Pound Lane and Main Street for the benefit of users of mobility vehicles. Work was carried out but the end result is not satisfactory. District Cllr George Reynolds said that he would deal with the matter. The tree at the corner of Hawkes Lane which was declared dead by Oxfordshire Highways has been removed at the Parish Council's request by Mr Cedric Brown. The cost was met by the Parish Council in the light of the fact that many years ago the tree was planted by the Parish Council at that time. Footpath Matters: Cllr Susan Bannister offered her services, which were gratefully accepted, as Parish Path Warden and she will keep a watchful eye for any work that needs to be reported. Village Pond: The matter of claiming ownership is ongoing. Public Participation: The following matters were raised by residents. Gullies in Acre Ditch require clearing and the Clerk was instructed to take matters forward with Oxfordshire Highways. The road leading from the Ferris to The Gate Hangs High seriously floods at times causing it to be closed. The area is outside the Parish Council boundary but the Clerk was instructed to liaise with Oxfordshire Highways. The footpath adjoining one of the cottages at The Cross is partially obstructed by plants growing through it and action is to be taken to cut them back. Any Other Matters: The Annual Spring Clean will take place on Saturday, 6<sup>th</sup> April 2013 and Cllr Peter Abbott will organise.

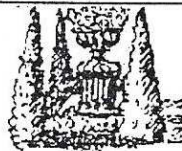


## C. A. Berger

Painting & Decorating  
Interiors & Exteriors  
Residential & Commercial  
Carpentry Repairs  
and  
Property Maintenance

Mobile: 07875 212 315

Office Tel/Fax:  
01295 738633



## BED & BREAKFAST

Buttslade House Cottage (Sibford Gower)  
offers comfortable accomodation with  
en suite bathroom overlooking a tranquil  
English country garden.

Contact Diana Thompson

(01295) 788818

or [janthompson50@hotmail.com](mailto:janthompson50@hotmail.com)

[www.buttsladehouse.co.uk](http://www.buttsladehouse.co.uk)



Sibford WI Report of Meeting on 8th January 2013

Members plus one guest, Rita Haaren on holiday from Germany, were welcomed by President Glennis Hardman.

“Infantilia” was the title of this months talk given by one of our own members, Jan Warner. It provided a fascinating insight into the history of baby equipment and its impact on baby welfare. Jan originally ran a business renting out modern baby equipment and her interest in and collection of “infantilia” started 30 years ago when offered an old pram by a customer. The collection includes a wide range of items from pin to pram. One safety pin donated has a particularly gruesome history, it was swallowed in an open state by the donor when a baby and then surgically removed in a major operation! In the 1850’s 50% of children died before the age of 5. An examination of childbirth practices helped to explain this. The more wealthy babies seemed to have less chance of survival due to the practice of shutting up expectant mothers in a sealed, overheated room and when the baby arrived rubbing it with salt, bathing it in wine and then pinning it into in several layers of restrictive clothing to make it even hotter. Death from overheating was common. For nourishment wet nurses provided breast milk and if this was not possible animal milk was given via a series of containers that harboured vast quantities of bacteria due to poor design. In fact one type with a long tube attached was so lethal it became known as the “murder bottle”. Eventually



**The Firs Garage**

[www.firs-garage.com](http://www.firs-garage.com)

Family business established 1960



Tel: 01608 737349 / 737641 Hook Norton, OX15 5DD



Cars & 4x4's with superb fuel economy & low emissions, including Mitsubishi ASX

Extensive range of new and used vehicles: petrol, diesel and electric

Part exchanges welcome

Servicing of all makes at competitive rates

Parts Bodyshop MOT

baby was weaned onto “pap”, a mixture of perhaps bread and milk with limited nutritional value. With little exposure to daylight or essential vitamins, rickets was common among upper class infants. Just to add more angst, babies’ gums were often cut to facilitate teething. The poorer country reared baby was fortunate by comparison. Not confined to a hot sealed room, fed naturally by its mother, weaned onto everyday foods including fruit and vegetables and lots of fresh air. All babies however were likely to be given soothing “elixirs” which generally contained opiates and alcohol. In the olden days it definitely was “survival of the fittest”. Jan’s full collection is displayed in her garage in Sibford and all are welcome to view it by appointment. A small, yet interesting selection was set out for us to look at during the meeting. Glennis expressed everyone’s thoughts when she thanked Jan for a most engaging and unique talk clearly delivered without reference to any notes.

Theresa Tovell, assisted by Mary Hill, served tea and a tempting selection of cakes baked by Barbara Crabtree. Jan had a difficult task in judging the competition “A Baby Clothing Keepsake”. Valerie Currie was awarded first, second Kathleen Winter and third Valerie Taylor.

Tuesday, 12th February is the date for our next Meeting. Dr Tony Maisey is coming to give a talk entitled “Spare Parts” and the competition will be “An Item of Old Medical Paraphernalia”. Guests most welcome. Village Hall 2pm.

Mary Hill



# villagefriend.com

*The new rural community website  
for local people, by local people*

## NOW 100% FREE !!!

WANT TO PROMOTE A COMMUNITY EVENT? USE US! ITS FREE!

WANT TO BUY OR SELL STUFF EBAY STYLE? USE US! ITS FREE!

WANT TO PROMOTE YOUR BUSINESS? USE US! ITS FREE!

*Local community events & info, buy & sell locally, promote your local business or service,  
web-page sized adverts, up to 8 free images/photos, up to 3000 characters of text,  
Google map of where you are, a link to your website if you have one,  
people can leave testimonials, social networking links to Facebook & Twitter, etc*

Take a look for yourself!

# villagefriend.com





## SIBFORD SCHOOL SELECTED TO HELP BOOST GLOBAL EDUCATION

2013 got off to an excellent start for Sibford School with news that the Quaker school has been selected as part of a major new initiative to boost global education.

*Connecting Classrooms* is a UK Government and British Council education programme aimed at linking schools around the world. As part of the initiative, Sibford School has been awarded a grant to help further links with Mbarara Preparatory School in Western Uganda.

Teacher Edward Rossiter said: "This is excellent news and a fabulous start to the New Year. We first became involved with Mbarara Preparatory School in 2005, thanks to a twinning programme operated by the British Council. The *Connecting Classrooms* grant will help us to continue to build on this relationship and will also enable us to develop links with Mbarara Municipal School, a government funded school in the city which has more than 3,000 pupils and class sizes of around 90 children."

The *Connecting Classrooms* grant will help fund teachers from Sibford to take part in exchange visits with the Ugandan schools to work on projects aimed at giving young people a unique and hands-on international learning experience and encouraging them to become responsible global citizens.

Secretary of State for International Development, Justine Greening said: "I want every child growing up in Britain today to be able to learn about the world around them, about what life is like for children in other countries, and about the potential of trade and economic development to build a freer, fairer, more prosperous world.

"*Connecting Classrooms* will enable pupils to learn about the facts of poverty that face children their own age in developing countries, and how education can help eradicate poverty. It will also benefit teachers by enhancing their professional skills.



*Nikki Brande*  
Photography

Nikki Brande | Director  
m: 07587 058563  
e: [nikki@nikkibrandephotography.co.uk](mailto:nikki@nikkibrandephotography.co.uk)

[www.nikkibrandephotography.co.uk](http://www.nikkibrandephotography.co.uk)

Specialising in children & family photography

**Bed & Breakfast**

**AGDON FARM**

**Nr Brailes**

**Comfortable rooms  
in old stone farmhouse**

**Tel: Maggie Cripps**

**01608 685226**

"I am very pleased that Sibford School is taking on this excellent opportunity to link with schools in other parts of our world. The benefits can be enormous – not just for pupils and teachers in the developing world, but for those in Britain too"

Pictured: pupils at Mbarara School in Western Uganda.

#### OPEN MORNING

Sibford School will be holding an Open Morning on Friday 8 March, offering parents of prospective pupils the opportunity to find out more about what the school provides. Head Michael Goodwin will give a short talk starting at 10am. Visitors will then be offered guided tours of the school and its facilities.

#### FEBRUARY HALF TERM

Sibford's 'Fun in the Country' activity club returns for February half term (February 11 – 15). 'Fun in the Country' is aimed at children aged between 5 and 11-years-old. Activities include arts and crafts, music and drama, cookery, sports and outdoor activities. There will also be the opportunity to swim in Sibford's 25m indoor pool. 'Fun in the Country' will be open on a daily basis from 8.30am through until 5.30pm and costs £28 per session. For further details or to obtain a booking form please contact Elspeth Gregory on 01295 781203 (email [egregory@sibfordschool.co.uk](mailto:egregory@sibfordschool.co.uk))

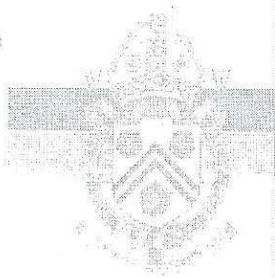
#### MASQUERADE MAY BALL

Sibford School parents' association is organising a Masquerade Ball to be held in a marquee in the school grounds on Saturday 18 May 2013. The event will include a formal dinner, live music from local band 'Under the Covers' and a disco. There will also be an exciting charity auction for things that money can't buy! Tickets are on sale now, £50 per person or £500 for a table of 10. Call 01295 781200.

Damian and Debbie

Welcome you to enjoy the atmosphere  
of our 16<sup>th</sup> century thatched Inn.

- Bar and a la carte menus available lunch & dinner.
- Excellent Sunday lunch - to suit the weather!
- New food and wine takeaway menu.
- Wednesday steak and wine night £15.00
- Selection of fine wines and real cask ales.
- Happy hour and a half every Wednesday evening!
- Gift vouchers available.



THE  
WYKHAM  
ARMS

Temple Mill Road  
Sibford Gower  
Nr. Banbury  
OX15 5RX

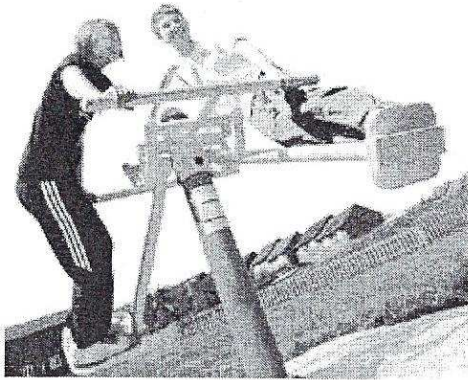
Tel: 01295 788808 / 07

Take a look at our new  
website  
[www.wykhamarms.co.uk](http://www.wykhamarms.co.uk)

email.  
[info@wykhamarms.co.uk](mailto:info@wykhamarms.co.uk)

Opening Times  
12.00am-3.00pm  
6.00pm-11.30pm

Bar only Sunday Night  
Closed all day Monday  
(Except bank holidays)



Sibford Ferris Parish Council is currently considering developing the area next to the Multi Use Games Area in conjunction with Sibford School. We hope to provide some fitness and adventure equipment for young people and adults and would welcome some young villagers to help us in the

planning and grant application process.

If you would like to be involved in the planning of this exciting project and help us provide what you would like to see and use on this site please ring Maureen Hicks (780259) as soon as possible so that we can get started.



**Victoria Smith**  
**MASSAGE THERAPIST**  
**@ Serenity, Sibford Gower**  
*"Life takes it out of you, but  
 Massage puts it back"*  
**07974 231571**

**REIKI**  
 HEALING FOR HUMANS  
 AND ANIMALS

**LYN SIMMS**  
 MASTER PRACTITIONER

**01295 780 655**

**FRANCIS MORDAUNT** MCFHP MAFHP

*Member of the Open College of Foot Health Professionals  
 Member of the British Association of Foot Health Professionals*

**FOOT HEALTH PROFESSIONAL**

To enquire about a home visit please

telephone: **01295 730615**

Professional Foot Care in Your Own Home

**BIKE REPAIRS & SERVICING**



**General servicing  
 Repairs**

**Cleaning & maintenance  
 All makes and types of bike  
 Reasonable rates, speedy service**

For all your bike repair needs, call: **01295 780355**

## Welly throwing competitions launch Upton House & Gardens NEW 2013 SEASON

The 2013 year is packed full of events. During the February half term there'll be children's activities every day except Thursdays. So whether it is adventuring on the woodland trail, welly throwing competitions, cooking up messy food in the kitchen or joining the Upton Art Academy of Mess, there will be lots to do between 16 – 24 February.

We have now assembled the absolute cream of our art collection all in one place. So from Feb 16 why not come and see this amazing collection curated by the National Trust Head of Paintings. You can see paintings by Heironymous Bosch, Pieter Breugel and El Greco shown in a whole new light.

Haidee Williams, Visitor Services Manager said "We are really excited about our new programme and hope that our Mud and Mess theme will get things off to a flying start, especially with Wellington boots hurtling through the air! Of course Upton's wonderful art collection will be here with all the paintings of the 'Top Choice' specially presented in the new squash court."

For further details call Upton House and Gardens on 01295 670266  
[www.nationaltrust.org.uk/uptonhouse](http://www.nationaltrust.org.uk/uptonhouse)

### **Serenity at Sibford**

**Gautherns Barn  
Sibford Gower OX15 5RY  
01295 788463**

**Environ Skincare and Facials are now at Serenity**

**Using proven, cutting-edge technology and skincare products for men, women and children all skin types and ages can be effectively treated with remarkable results**

**If you know of anyone who has young, problem skin Jo is now offering a full skin analysis covering a home-care guide of products to use, treatments available in salon and make-up to help conceal, repair and feel more confident**

**We now have Lycon Hot Wax for more comfortable underarm, bikini and facial waxing**

**We have a beautiful Jane Iredale Mineral Make-up Tester Stand in reception**

**come and have a play or book a one-to-one with Jo to re-vamp your make-up routine!**

**Open Monday-Saturday**

## WOULD YOU LIKE TO KEEP BEES?

A lot of people keep bees because they produce honey, one of the healthiest and most natural foods and one which has been valued by man since prehistory as a sweetener. Others keep bees because they are interested in the study of bees and of their habits; bees are fascinating creatures and there is always something new to learn about them. With no means of dealing with the varroa mite that is now present in all UK honey bee colonies, a feral honey bee nest is unlikely to remain viable for more than a couple of seasons. With the help of beekeepers it is only managed colonies that can survive to carry out the essential pollination of our food crops. Beekeeping is an enjoyable open air hobby bringing you in contact with people from all walks of life. Bees can be kept by almost everyone except a very small minority who are allergic to bee stings.

Shipston Beekeepers are holding an "Introduction to Beekeeping" day on Saturday 9th March at the Old Free School, Brailes OX15 5HT. The day will deal with the basics of beekeeping for the complete beginner or those with very limited experience of this craft.

Arrive at 09.30 for coffee prior to a prompt 10.00 start. Refreshments, a light lunch and a practical beekeeping reference manual are included in the day's price of £40. The event is scheduled to finish at 15.30 approx.

Contact Douglas Nethercleft on 07850 352905 or [djn0001@aol.com](mailto:djn0001@aol.com) to book your place. Numbers are limited.

# Oddjob

**CARPENTRY • PLUMBING • ELECTRICS • HOUSEHOLD REPAIRS**

**No need to call in four  
different contractors ...*Call me!***

For your building, DIY and home improvement needs  
KITCHEN & BATHROOM FITTING • HEATING INSTALLATION  
CARPENTRY • PLUMBING • ELECTRICS • SECURITY ... and more

**DIY? Don't do it yourself ...*Call me!***

For a comprehensive and reliable local service,

**Call HUGO SEELY on 01295 780355**

**FREE NO-OBLIGATION ESTIMATES**

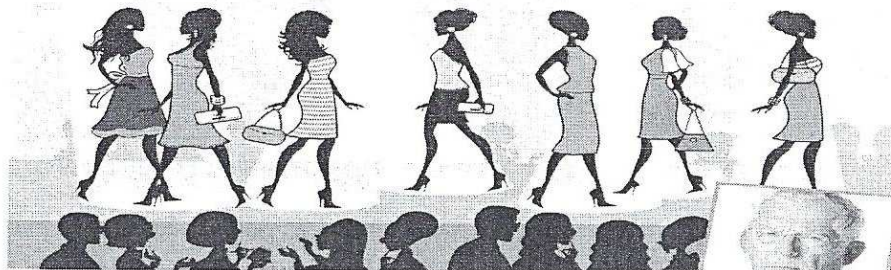
*Trading in the Sibfords since 1992 - Excellent local references available*



# Justina

Presents

## SPRING FASHION SHOW



**At the fabulous Walton Hall**  
**14th March 2013**

7pm Champagne & canape reception, 7.30pm 2 course dinner. Jewellery auction kindly donated by Howard Jewellers. £40 per person. Limited places. For tickets please contact Rebecca on 01608 674929 or Justina on 01789 841562. **In support of Shipston Home Nursing and Chedhams Yard Trust**



**LOGS, HAY,  
 STRAW**

**Garden Manure  
 Half pigs for the  
 freezer (limited)**

**Antony Sabin  
 01295788421**

**SERENITY**  
 BEAUTIFUL BODIES

**Serenity Beautiful Bodies**

can offer

- Spa Days/Treatments
- Relaxation Spa Days
- Pamper Days
- Lipo Laser
- Yummy Mummy Days
- Bride To Be Days
- Stag & Hen Days
- Pamper at Home Parties

*Our Philosophy*

*At Serenity we offer luxurious and indulgent therapies, and spa treatments in our tranquil, beautiful surroundings in the Cotswolds. All our treatments are carried out by carefully selected therapists to deliver the star quality you deserve and expect. We completely indulge you to ensure your day will be calming and relaxing, but also a day to remember.*

[www.serenitybeautifulbodies.co.uk](http://www.serenitybeautifulbodies.co.uk)

Email: [serenitybeautifulbodies@gmail.com](mailto:serenitybeautifulbodies@gmail.com)

Tel: 0129 07507 / 165213 / ANGLE 0780 262578

# VILLAGE HALL NEWS

**FILM NIGHT** Our next film night will show "Ladies in Lavender" starring Dame Judy Dench and Maggie Smith, on Thursday, January 31st. Doors open at 6-45pm and the film will start at 7-30pm. Hot drinks and soft drinks available. £2 entry. February film will be on Thursday 28th February.

**LOTTERY GAME** We are starting up the Village Lottery again in February. For the sum of £12 you have a chance to win one of three cash prizes given each month. Half the proceeds go into the prize fund and half to the the Village Hall. If you would like to join or renew your membership then telephone Muriel on 01295780025.

**VILLAGE FAYRE / DOG SHOW** We are planning to hold the Fayre and Dog Show on June 15th, Saturday.

**BOOKING SECRETARY** at the present time is Anita on 01295 788557.

**slight adjustments**  
the woman's touch

Lighting  
Flooring



Curtains  
Blinds



Colour  
Consultation



Artwork  
Gilding



Painted  
Furniture  
& Kitchens



Accessories  
Mirrors



Garden &  
Carpentry



Upholstery  
& Soft  
Furnishings



We can help you create the perfect home and living space by making the most of what you already have - tailoring everything to your budget whether you want a 'makeover' to maximise a house sale, to decorate a room or you simply require a pair of curtains.

Free consultation and estimate for any size job  
Contact Rachel: 07913 546 867  
[www.rachelberger.co.uk](http://www.rachelberger.co.uk)

**OPUS**  
Property  
Services Ltd

01295 780652  
07816592124

All aspects of property maintenance and refurbishment undertaken from replacement light bulbs and tap washers to new ceilings and floors.

Plumbing, tiling, wood flooring, floor renovation, under floor heating, plastering, electrics, decorating, damp proofing, carpentry, locks, drains, kitchens, bathrooms etc

Call us or visit our website for more information:  
[www.opusps.co.uk](http://www.opusps.co.uk)

## Oxfordshire Woodfuel Programme bulletin: January 2013

The Oxfordshire Woodfuel Programme now has a website which provides lots of advice on growing, cutting, storing and burning woodfuel:

[www.oxonwoodfuel.org.uk](http://www.oxonwoodfuel.org.uk).

I will be running a series of one-day woodfuel-related study visits on 15 April, 13 May and 8 June. They cost £25 each. More information is available on the website.

The Oxfordshire Woodland Project is running workshops on woodland management: see [www.oxfordshire.gov.uk/cms/public-site/woodland-workshops](http://www.oxfordshire.gov.uk/cms/public-site/woodland-workshops).

Grants: Households that do not have central heating and install a biomass boiler before the end of March can get a £950 grant. Woodland owners who need to put in roads to extract woodfuel can get a grant that covers up to 60% of the cost. Please contact me if you need help with these, or with any other aspect of woodfuel.

Riki Therivel, manager@oxonwoodfuel.org.uk, 01865 243488



### QUALITY FISH DIRECT FROM GRIMSBY MARKET-

Proprietor: T.P.Martin

Tel: 07812 361853

Best fresh fish and shell fish to your  
area direct from Grimsby on the  
Lincolnshire coast

I'll be at Sibford Village Hall car park  
EVERY MONDAY from  
approximately 4pm till 5.30pm

### Miss 'T' Catering.

Catering for events such as:

Anniversaries, Weddings,  
Christenings, Birthday parties,

Funerals

And private dinner parties.

~.~.~

Also available

Cutlery and Crockery Hire.

Contact Victoria Taylor on:

Mob: 07841 910037

Home: 01295 788924

## Pilates

Relax, Re-condition and  
Re-energise

Small Group Intensive Courses

Individual Sessions

by appointment with

Madeleine Wilson B.SC., M.SC

Master Mat &

Studio Instructor

Personal Trainer

07905 953 300 or

01295 780 279

email

[mw1@linuxwaves.com](mailto:mw1@linuxwaves.com)

Richard Wallington

Builder

Block Paver Drives a Speciality

Also Extensions, Patios

Fencing etc.

High Quality Work, Free Estimates

01295 780705 07743 932545

(Sibford Gower) (Mobile)

# ART EXHIBITION & CRAFT FAIR

Sibford Gower Endowed Primary School

**Sat 16<sup>th</sup> and Sun 17<sup>th</sup> March 2013**

10.30am – 4.30pm

More than 200 artworks by national and local artists

All day café

Quality Craft Stalls

Children's Craft Workshops

For more information please contact:

Sibford Gower Endowed Primary School PTA – ecm1979@hotmail.com

Sibford Gower Endowed Primary School  
Acre Ditch, Sibford Gower, Banbury, OX15 5RW



*Sarah Walker*

*Vivienne Nott*

*fresh flowers, fresh ideas*

*Gorgeous bouquets & arrangements*

*Wedding bouquets, churches,*

*marquees and receptions*

*Flowers for supper parties,  
house parties and celebrations*

*Funerals and memorials*

*Contact :*

*Sarah : 01295 788595 Viv: 01608 652819*



## GODSWELL NATURAL THERAPY CENTRE

*Godswell Lodge, Church Street, Bloxham, OX15 4ES*

*Tel: 0844 477 8595*

\*\*\*\*\*

Acupuncture ; Alexander Technique ; Aromatherapy ;  
Body & Face Therapies ; Bowen Technique ;  
Chiropody/Podiatry ; Clinical Pilates ;  
Cognitive Behavioural Therapy (CBT) ;  
Contenance Advice (for women and men) ; Counselling ;  
Cranio-Sacral Therapy ; Herbal Medicine ; Homeopathy ;  
Hypnotherapy ; Lymphatic Drainage Massage ;  
Massage (inc deep tissue, hot stone and Indian Head) ;  
McTimoney-Corley Spinal Therapy ; Nutritional Therapy ;  
Neuro-Linguistic Programming ; Osteopathy ;  
Reflexology & Remedial Massage

\*\*\*\*\*

*Fully qualified and professional therapists*

\*\*\*\*\*

See website for further details:-

[www.bloxhamsurgerv.co.uk](http://www.bloxhamsurgerv.co.uk)

(follow the link to Godswell NTC)



## FARMHOUSE BED AND BREAKFAST GRANGE FARM, SWALCLIFFE

*Enjoy warm hospitality & peaceful  
surroundings in our comfortable  
18th C Farmhouse*

**CONTACT BARBARA TAYLOR**  
**TEL. 01295 780206 or 0771 2895728**  
[WWW.swalcliffegrange.com](http://WWW.swalcliffegrange.com)



Contributions for the  
March

Sibford Scene  
to the Shop or Editor  
by February 19th

## HOLY TRINITY CHURCH NEWS

[www.thesibfords.org.uk/holytrinitychurch](http://www.thesibfords.org.uk/holytrinitychurch)

Much has happened since our last report including the Christmas Bazaar, the Confirmation service in Tadmarton, our final coffee morning of the year and of course all the Christmas services. The Family Service on 13th January arranged and lead by the Rector was a memorable and inspiring service and future Family services, usually on 2nd Sunday of each month are likely to be too good to be missed by young or old.

We start the New Year with a meeting of the Wykeham Council, the meeting of the combined PCC's of all the six Benefice Parishes which will be held in the small Sibford Village Hall on January 30th. It is hoped that many from the villages who are not PCC members will also be there where there will be discussions on the development of the new Wykeham Website (linked to our own), our Benefice Mission Plan, work with Families and Children and plans for the forthcoming year amongst other items. The views of those who do not like formal services are just as important as those who do, in many ways more so, and there are many to whom suggestions can be made: Rector, churchwardens and PCC members of whom a list may be found on the notice board inside the Church.

There will be a meeting in church on Saturday 2nd February at 10.00 am of all Sibford choir members together with any others who it is hoped, would like to join them. The meeting will consider a possible alteration to the regular choir practise time to suit more of the participants also the possibility of the choir singing regularly at Sunday services in the village. The Sibford choir is the old benefice choir and there are some members from Epwell and Tadmarton who will not be able to sing at Sibford services on a regular basis as they normally attend their own churches. Some of the choir members are also occasionally away at weekends visiting families and friends so there will be a need for some extra members. Please think seriously about joining our number.

Lent Groups will commence after Ash Wednesday on February 13th. They will be at 10.30am to 12.00 at 32 Danvers Close, Broughton on Thursdays starting 14th Tadmarton in the Lampit Arms on Tuesdays after 10.00am Holy Communion in the church; Epwell, probably at Dawn's house on a Thursday evening and Sibford, again possibly on a Thursday evening, please enquire from Evey Boughton (263460) for Sibford and Dawn Castle (788473) for Epwell. Please join one of them.

Please give a thought or prayer for the sick in the Benefice and the families of the recently departed. All their names will be found in the pewsheets in the church where there is also a prayer board for you to write your own personal prayer requests.

## Church Services

Society of Friends		Sunday at 10.30 am
Methodist		Sunday at 11.00 am
Roman Catholic Mass	Wroxton	Sunday at 9.00 am
	Brailes	Sunday at 11.30 am
Baptist	Hook Norton	Sunday at 10.30 am

### Holy Trinity Church, Sibford

Sunday Feb 3rd Candlemas 10am Benefice Eucharist at Epwell

Sunday Feb 10th Sunday before Lent 8am BCP Holy Communion  
and 10am Family Service

Wednesday Feb 13th Ash Wednesday 8pm Holy Communion and  
Imposition of ashes

Sunday Feb 17th 1st Sunday of Lent 9.30am Holy Communion

Sunday Feb 24th 2nd Sunday of Lent 9.30am BCP Holy Communion

Sunday March 3rd 3rd Sunday of Lent 10am Benefice Eucharist at Shutford

### Methodist Chapel Preachers for February

Sunday 3rd	Mairi Radcliff
Sunday 10th	Local arrangement
Sunday 17th	Mary Newman
Sunday 24th	Martin Hannant



## RED HORSE VALE LTD

All Types of Fuel, Coal, Smokeless, Gas,  
Logs, Kindling, Barbecue Needs  
Central Heating Oil, Oil Tanks & Coal Bunkers  
Landscape & Building Materials, Garden Centre &  
Garden Supplies, Farm & Country Sundries  
Equestrian Products, Horse & Pet Feeds  
Open: Monday - Saturday 8am - 5pm  
Windmill Farm, Banbury Road (A422),  
Oxhill, Warwickshire CV35 0RP  
Tel: 01926642832  
Fax: 01926 642 853

### Oxon Computers Get IT sorted!..

- ◆ PC speed up service
- ◆ quick repairs & upgrades
- ◆ Help & advice
- ◆ Malware Zapped!!!

### ComPTIA IT Technician

[www.oxoncomputers.co.uk](http://www.oxoncomputers.co.uk)  
Get IT sorted!..

Tel: **01295 788766**  
email: [admin@oxoncomputers.co.uk](mailto:admin@oxoncomputers.co.uk)

# Sibford Bus Services

## Cherwell Rural Dial-A-Ride Scheme

A mini bus with tail-lift to take **elderly or disabled people** and escort to Banbury (max fare £1.60) Door-to-Door service. Book at least one day in advance. Operates on Wednesdays & Thursdays. Phone 263777 for details.

BCTA also takes bookings for groups of 8 or more on a weekly/monthly basis (Wednesdays & Thursdays) to and from Banbury. Tel; 263777

## Stagecoach – Timetable commencing 31<sup>st</sup> May 2009

Mondays to Saturdays (No services on Sundays or Public Holidays)

### Bus 50A. From Banbury towards Stratford-upon-Avon

Banbury, Bus Station	08.30	10.55	12.45	14.26	16.05	17.10	18.10
Sibford Ferris, Cross Roads	08.52	11.17	13.07	14.48	16.27	17.32	18.32
Sibford Gower, School	08.55	11.20	13.10	14.51	16.30	17.35	18.35
Shipston,	09.15	11.40	13.35	15.11	16.50	17.55	18.55
Stratford on Avon, Wood St.	09.40	12.09	14.04	15.40	17.19	18.24	19.24

### Bus 50A. From Stratford-upon-Avon towards Banbury

NS

Stratford on Avon, Wood St	06.20	07.10	09.05	11.10	13.10	15.10	16.24
Sibford Gower, School	07.04	07.55	09.56	11.56	13.56	15.56	17.14
Sibford Ferris, Cross Roads	07.07	07.58	09.59	11.59	13.59	15.59	17.17
Banbury, Bus Station	07.28	08.25	10.21	12.21	14.21	16.21	17.39

NS = Not Saturdays

All buses will operate low floor wheelchair accessible vehicles.

For complete details of all the stops that are served by service 50A, timetables are obtainable from the Tourist Information Centre in Castle Quay, Banbury.

Fares:-

Sibford Ferris & Sibford Gower to Banbury: Single £2.50 (Child £1.25)

Return £4.70 (Child £2.35)

Sibford Ferris & Sibford Gower to Stratford: Single £4.30 (Child £2.85)

Return £6.30 (Child £4.20)

Unlimited travel Cards are available for 1, 7 or 28 days but are regional and need to be bought in advance. Contact the Stagecoach sales office in Oxford tel; 01865 772250 for more details.

# Calendar of Events

## January

Thu 31st "Ladies in Lavender" Village Hall Film Night 6.45 for 7.30 start.

## February

- Tue 5th Men's Breakfast Club. 9.15 at Wyatts
- Tue 5th Friendship Club Meeting. 2pm at the Village Hall p4
- Sun 10th Footpaths in paddock at Green Acres closed for one day only.
- Sun 10th Table Top Sale at Swalcliffe Village Hall 12 - 4pm p4
- Tue 12th WI. "Spare Parts" Village Hall 2pm p10
- Wed 13th Mobile Library in the Sibfords (2.40 - 4.10pm)
- Tue 19th Deadline for contributions to March Sibford Scene. P20
- Wed 27th Mobile Library in the Sibfords (2.40 - 4.10pm)
- Thu 28th Village Hall Film Night p18

## March (part)

- Tue 5th Men's Breakfast Club. 9.15 at Wyatts
- Fri 8th Sibford School Open Morning. P12
- Sat 9th Bee Keeping Course in Brailes. P16
- Wed 13th Mobile Library in the Sibfords (2.40 - 4.10pm)
- Sat 16 & Sun 17th Art Exhibition at the Primary School p20
- Wed 27th Mobile Library in the Sibfords (2.40 - 4.10pm)

Cover picture Girls at Play at Sibford School

### Sibford Scene

Editor; Adrian Lamb. Grounds Farm, Sibford Ferris. 780380

e-mail [adrian.lamb1@btconnect.com](mailto:adrian.lamb1@btconnect.com)

Advertising; Ivor Hopkyns, Elmridge Farmhouse, Sibford Gower,

Banbury, Oxon. OX15 5RT. Tel 788367

e-mail [sallyandivorhopkyns@hotmail.com](mailto:sallyandivorhopkyns@hotmail.com)