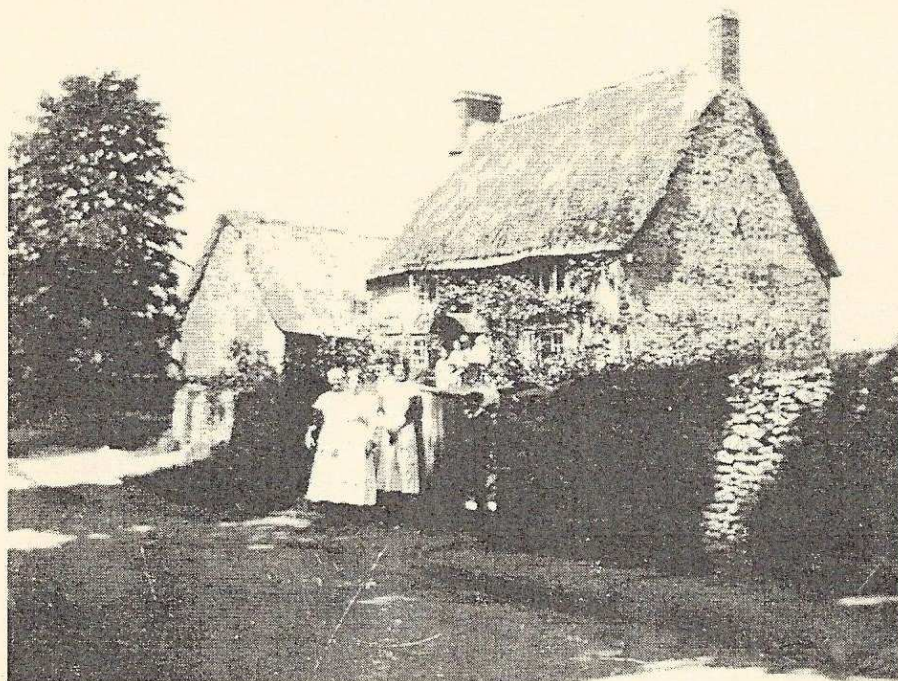


Sibford Scene



November 2011

No. 337

Bonfire and Fireworks at the Primary School

Saturday 5th November 5.30pm (fireworks at 6pm)

Remembrance Day Service

Sunday 13th November 10.55am

Village Hall Quiz

Saturday 19th November 7.00pm

Holy Trinity Christmas Bazaar

Saturday 26th November at the Village Hall (2 - 4:30pm)

Nature Notes

Sep 29th. Today my son in law saw quite a lot of gulls following the cultivator near Field Barn and a red kite above them keeping an eye on proceedings.

Sep 30th. We have seen hummingbird hawk moths on several occasions over the last few days feeding on our red salvia bush and on a late bud-leia. The way they fly sideways as the flower is blown about, staying in perfect alignment and correct distance from the flower to extract the nectar, is quite amazing.

Oct 9th. After a few chilly days today is milder and the hummingbird hawk moth was working on the salvia again which was fortunate as we had a lady here who had never seen one.

Oct 18th. In the spring, fine weather brought out good numbers of yellow brimstone and a few comma butterflies that had over wintered successfully, followed by orange tips and holly blues, we always see quite a few holly blues which may be because we have a lot of flowering ivy for the caterpillars to feed on in the autumn. Since then, at least in our garden, numbers have been well below average, particularly of the showier ones like peacocks, small tortoiseshells, painted ladies and red admirals. This is similar to what happened last year. I hope the summer ones are not going to continue to get fewer.



FOLLY FARM BACK PAIN CLINIC

ACHES & PAINS?

I can help you!

Just visit your local clinic
between Sibford & Swalcliffe

Contact: John McArthur
Back Pain Therapist
B.Sc. & Dip (Chiropractic)

Tel: 0845 862 4 862
(Local rate)

Mob: 07740 404 678

Ann Woolgrove FABRICS, CURTAINS & SOFT FURNISHINGS

Personalised design service and consultancy in
your own home.

Beautiful bespoke Curtains, Roman & Roller
Blinds & Soft Furnishings, handmade to the
highest standard.

Advice on every kind of Fabric from numerous
suppliers.

Stylish complimentary Cushions & Loose
Covers.

Re-upholstery service.

Custom made Bedspreads & Headboards.

New Sofas & Chairs

Tel/Fax: 01295 788145
Email: info@annwoolgrove.com
www.annwoolgrove.com



At our meeting held on 20th September, we were given an excellent presentation by Maureen and Keith Hicks on The Domesday Project which they had been working on since early 2010. The purpose of the survey was to obtain current data that could be compared with the survey carried out by the Rev Edward Stevens in 1877.

In The Sibfords we have a wide range of 30 Village Groups and Organisations and there was a response of 100% indicating a total adult membership of 656. All Households were surveyed and there was a response of just over 50% from 181 of the 359 recipients. One interesting point of comparison was that in 1877, adults over 21 comprised 51% of the population whereas in 2010 the figure is 81%. Also, in 1877 the local economy was based on agriculture and this had dropped significantly by 2010.

The date of June 16th 2010 was selected for the actual survey in which local residents were invited to record their actual activities on that day. Replies were received from 123 indicating that 76 different activities were carried out. The cost of a range of everyday items were recorded for use in any future surveys. The village Primary School was contacted and pupils were invited to submit details relating to their attendance at the school. It is interesting to note that in 1900 all pupils came from the Sibfords whereas today they attend from 13 surrounding villages.

The Sibford School which started in the Manor in 1842 had just 83 pupils in 1877. Today, the number has risen to 411 and the school now operates from new premises on the site.

All of the information obtained is recorded on a database for future use.

(Continued overleaf)



HOLMBY HOUSE

SIBFORD FERRIS

**A stunning setting for
special celebrations**

From Buffets to Gourmet Dinners

Formal dining for large groups

Garden parties Business meetings

Luxurious B & B

Self-catering accommodation

Tel/Fax: 01295 780104

www.holmbyhouse.com

Sally.wass@btinternet.com

THE VILLAGE SHOP HOOK NORTON

NATIONAL LOTTERY

Grocery - Greengrocery - Bakery

Wines - Spirits - Confectionary

Newspapers - Magazines - Cards

Video Rental - Bottled Gas

Open Monday to Friday

7 am to 8 pm

Saturday 8 am to 8 pm

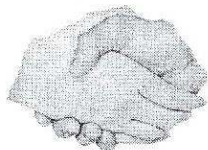
Sunday 8 am to 6 pm

Telephone: 01608 737245

At the end of the meeting Maureen and Keith were thanked for the immense amount of work that they had done to create this project.

Our next meeting will be held on Thursday 17th November in the Village Hall. David Ouvry will be demonstrating how violins are made and will also be playing for us. This promises to be a most entertaining evening and we are hoping for a large attendance.

There will be a small charge for non members and a raffle will be held.



Friendship Club

This month, I report that, once again, we have just returned from a trip, this time to Westonbirt Arboretum. The sun shone for us but there was a chilly wind. I think everyone had a lovely day. The one thing I have learnt on today's trip is, Don't Walk Under Oak Trees when the wind is blowing. The acorns can hurt as they fall!!!!!!!!!!.

In November we have changed the dates over, so that on Nov 1st we have a Speaker and on the 15th we are going to Millets.

Sibford Stores & Post Office

Sibford Ferris

OX15 5RG

Telephone 01295 788317 / 788348

YOUR LOCAL CONVENIENCE STORE AND NEWSAGENT

We deliver newspapers and magazines 7 days a week to all the surrounding area. Place your regular order today, whether for 1 day a week or 7. Always a wide selection of magazines available, specialist titles available to order.

Chilled & Frozen foods, groceries, cigarettes, beers, wines and spirits, fresh fruit and vegetables, pet foods, household goods, toiletries & medical requisites and lots, lots more.....

National Lottery, Photocopying, fax service, dry cleaning

We will also undertake your mailings for you, just ask.

Always an excellent selection of Hook Norton bottled beers in stock.

Telephone your grocery order for free local delivery.

OPENING HOURS

Monday to Saturday 6.00am to 8.00pm

Sunday 6.00am to 6.00pm

PLEASE SUPPORT YOUR LOCAL POST OFFICE, THERE ARE LOTS OF PRODUCTS AND SERVICES AVAILABLE ON YOUR DOORSTEP

BONFIRE AND FIREWORKS SATURDAY 5TH NOVEMBER SIBFORD GOWER PRIMARY SCHOOL

Gates open 5.30pm Fireworks at 6.00pm

Advance tickets - Family £10,

Adult £4, Child £2.50

On the Night - Family £15,

Adult £4, Child £3

For tickets contact Emma

Wood 780307

Mulled Wine, Bacon Rolls,
Hot Dogs, Homemade Soup,
Soft Drinks

Sibford Gower Endowed Primary
School PTA raising money for a
purpose built music room and re-
furnished cloakrooms with storage.

Holiday Let

For 1 or 2 people

In quiet, self-contained
annexe

Contact Judy Abbott

01295 780731

The English Furniture Workshop

Beautiful Hand Painted
Antique Furniture

Amanda Ransom, Sibford Gower
Tel: 01295 780799 M: 07932 613663

[www.englishfurniture
workshop.co.uk](http://www.englishfurnitureworkshop.co.uk)

SIBFORD GOWER

Endowed Primary School



Christmas

Shopping Evening

Tuesday 22nd November

FROM 6.30pm-10pm

Sibford Village Hall

This Christmas shopping evening offers a one stop shop for all things Christmas in November, with everything from gifts and trinkets to food and decorations. For truly unique gifts and to help fundraise for Sibford Gower Endowed Primary School PTA come and spend an evening shopping.



The entrance fee is going towards Sibford Gower Endowed Primary School PTA who are raising money for a purpose built MUSIC ROOM & REFURBISHED CLOAKROOMS with storage

PIT STOP CATERING

Village Hall Car Park
Every Tuesday evening
between 5.30 and 8 pm. Starting
TUESDAY 10th MAY

With

FISH&CHIPS

SOUTHERN FRIED

CHICKEN & CHIPS

PIE & CHIPS

PLUS a "Special Meal" every week

President Glennis Hardman welcomed twenty members and one guest, Mary Mills. Val Powell's flower and foliage arrangement in an Art Deco bag was much admired. Eight Sibford members attended the Group Meeting hosted by Hornton and District WI on 6th October. Peggy Mumby retired after three years as the Group Convenor. She was presented with a card of thanks, an M&S voucher and a basket of flowers. Her place is being taken by Kerrie McCormick, the Hook Norton WI President. Lynda Conway, Glennis Hardman and Kathleen Winter travelled to Horton-cum-Studley on 7th October to see the OFWI Textile Exhibition. This was attractively displayed and included three beautiful entries by Kathleen.

Gillian Cane, an excellent speaker, came to tell us about the Mitford family. Much has been written, by and about, the six daughters of Lord and Lady Redesdale; their social and political exploits dominated the front pages of newspapers for many of those turbulent years between, during and after the two world wars. Why? Because they were wealthy, as were all their friends, they were sociable, controversial, scandalous, articulate, political, talented, wilful, dangerous – all those characteristics which never fail to fascinate the general public. Their father was very involved in their lives from day 1 (most unusually in such times he was present at each birth) and one of his rulings was that none of them should attend school. (This edict was not applied to his only son, Tom who was educated at Eton.) Despite this lack of formal education they all went on to make their mark in one way or another on the literary world. Nancy, the first-born (1904) published her first novel in 1931. After the scandalous divorce by her of her first husband, Peter Rodd, which left her free to marry Gaston Palewski and move to Paris, her success in writing novels was such that two were made into films, one being *Love in a Cold Climate*. The next sister, Pamela, who was the first wife of five-times married Derek Johnson, was a countrywoman at heart and became a world renowned authority on poultry. Diana (b1914) was a fascist. After her divorce from very wealthy husband Brian Guinness, she lived with, and subsequently married, Sir Oswald Mosley and became possibly one of the most hated individuals of the time. Denounced by sister Nancy and also her ex-father-in-law, she was imprisoned in Holloway during the second world war. Unity (b 1914) was also a fascist. She was a very rebellious child and her parents finally agreed for her to go to school; however, she was expelled after a year. Later she lived in Germany where she met



The Firm, Hook Norton, Banbury, OX15 5DD
Email: enquiries@graphics-direct.co.uk
Phone: 01608 730555 Fax: 01608 730271

For all types of Vinyl Graphics & Signage

Theresa Harper

THE FIRM, HOOK NORTON, BANBURY, OX15 5DD

and became besotted with Adolf Hitler. Eventually she returned to England where she died in 1948 as a consequence of a self-inflicted head wound. Jessica (b 1917) was the daughter who in her younger years had the closest relationship with her father. Unfortunately, this changed after she eloped to Spain with communist Esmond Romilly who hated the whole family. In Spain they married, and fought in the Spanish War. Later they lived in America where she was devastated by his death although later she married a left-wing lawyer Robert Treuhaft. She had never spoken to her father during all this time and denied him his deathbed wish to see her. Deborah (b 1920) was probably the least rebellious, was steady and enjoyed rural pursuits. She married Andrew Cavendish, who inherited the Chatsworth Estate upon the untimely death of his brother, thus becoming the Duchess of Devonshire. There is too much to be told about the Mitfords and this account is only a morsel of a fascinating story. And in case you are wondering, Tom the only son was killed at the age of 36 during the war in Burma. Gillian was appreciatively thanked by Kathleen.

Gaynor Harper-Tarr and Val Powell served tea and delicious cakes. There were many entries for the competition for an item of Art Deco jewellery. Eleanor Joynes was judged the winner by the speaker who chose Val Powell's entry second and Jan Warner's third. Our next meeting in Sibford Village Hall is on 8th November when Nicholas Clark will be giving a talk entitled 'Bus across the Andes'. The competition is for a foreign coin. Visitors always welcome.

Margaret Gardiner

Micks Sticks

Fire Lighting Wood For Sale

£2.50 per big bag

Call in anytime and ask for Mick Canning, at
The Old Malt House, Sibford Ferris
Tel; 01295 780321

Sports & Remedial Massage

Aid sore, aching muscles and injuries

Natural Face Lift

Using the beautiful Japanese
facial massage

Special introductory offer £25.00

Victoria Smith

ITEC DIP SPORTS MASSAGE, VCTC, MIGHT
01295 78061007974 231571

Need an extra pair of hands
to help with household
chores whilst your at work
or holiday - cleaning, errand
running, cooking, caring for
your pet's (large or small inc
horses) or any other jobs
you just don't have the
time for?

One off or long term
bookings. References available.
Competitive rates assured.

I am an experienced reliable
mother of two awaiting
your call

01295 788519 / 07813202726

VILLAGE HALL NEWS

Village Hall Quiz is on November 19th, Saturday, starting at 7-30pm [doors open 7pm]. Teams of up to six persons are invited to enter at £6 per head. Please call Muriel on 780025, or Ginny on 780373 to register your team name. A ploughman supper will be available and the licensed bar open. Our quizmaster will be Adam Leyburn and the format of the quiz will be familiar to regular contenders. Why not get your friends and neighbours together and have a go!

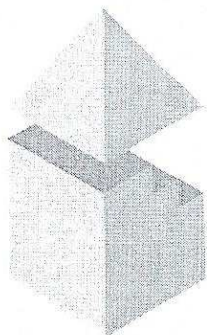
We are planning for next year already and will hold a Family Quiz in February. The popular Easter Egg Hunt will be on Good Friday. The Village Fayre is planned for June 2nd. This is earlier than usual so as to coincide with the Queens Jubilee celebrations. There will be other events happening in the villages so we would like to make it a full weekend of fun.

The winners of the Village Lottery draws during the summer are as follows--

JULY 1st Miss Lily Tuffrey ; 2nd Mr Gordon Fowler; 3rd Mr Mike and Mrs Ann Lewis

AUGUST 1st Mr Ivor Hopkyns; 2nd Mr Peter Hardman; 3rd Mrs Alexis Hopper

SEPTEMBER 1st Mr and Mrs Anthony Harwood; 2nd Mr and Mrs Hobson; 3rd Mrs Judith Byrne.



DAVID BOVILL

ARCHITECTURAL AND PLANNING SERVICES

Providing a personal service from Design through Planning and Building Regulations, and beyond if required

Specialising in Extensions, Loft Extensions and Listed Buildings work

Please phone or e-mail to arrange a free initial consultation

01869 347906

davidbovill@btinternet.com



Sibford Horticultural Society

A short and sweet AGM started the first meeting of the season. Members of both committees agreed to continue and a healthy bank balance will see us in good stead for the coming year. (Just a reminder that subscriptions of £8 are due) Duncan Combes, from Pershore Collage, then talked to us about Autumn Colour. As well as looking at the usual suspects who give excellent leaf colour he brought examples of flowering shrubs and herbaceous plants that give an excel-

lent show now. A very enjoyable evening to a good number of people. Our next meeting will be at the Village Hall on Wednesday 9th November at 8.00pm when Timothy Walker, director of Oxford Botanic's, will once again be entertaining us with a talk entitled A Blaze of Glory. No idea what it's about but would urge everyone to come and find out! Refreshments (wine and nibbles) served afterwards. Members free, non-members £1.50

HENRY PURCELL

DIDO & AENEAS

FUNERAL MUSIC FOR QUEEN MARY
WELCOME TO ALL THE PLEASURES

Sat 19th Nov, 7.30pm
Ss Peter & Paul Church,
Deddington

Tickets £10 available online
Hamptons Deddington
One Man Band Banbury
Bloxham Post Office
or Tel -01295 721224

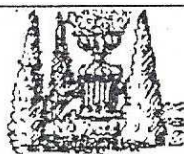


Warriner Choral Society
sponsored by sprat, endicott
www.warrinerchoralsociety.co.uk

C.A. Berger

painting & decorating
interiors & exteriors
residential & commercial

Mobile: 07875 212 315
Office Tel: 01295 780 140



BED & BREAKFAST

Buttslade House Cottage (Sibford Gower)
offers comfortable accomodation with
en suite bathroom overlooking a tranquil

English country garden.

Contact Diana Thompson

(01295) 788818

or janthompson50@hotmail.com

www.buttsladehouse.co.uk

Sibford Tots and Babies

Wednesday and Thursday
9.30am to 11.30am



Sibford Tots and Babies runs every Wednesday and Thursday from 9.30am to 11.30am. We are located in a purpose built, bright and airy room, within Sibford Village Hall with a dedicated and enclosed outdoor play area.

Welcoming all children from babies to pre-schoolers.

Why not come along with your child/ children and meet other parents/carers for a chat, a coffee and experience what we have to offer.

We are situated in the small hall:

*Sibford Village Hall
Sibford Gower
Banbury
Oxfordshire
OX15 5RW*

*If you need further details
please contact Emma on
01295 780072.*

The Firs Garage

- All Makes Vehicle Servicing
- Competitive Prices
- Factory trained mechanics
- MOT • Parts • Bodyshop • Fuel
- Large site with easy parking
- Extensive range of new and used vehicles

ALL MAKES SERVICING

Hook Norton • Oxon • OX15 5DD (1 mile north of Hook Norton Village)

Tel: 01608 737349/737641 • www.firs-garage.com

Family Business established 1960

WELCOME TO SIBFORD

If you are a new resident of Sibford and have not yet received a copy of the "Welcome to Sibford" booklet, please telephone Ivor Hopkyns on 788367 (Gower or Burdrop) or Ann Bishop on 788188 (Ferris), and a copy will be delivered to you. The information will help to make you feel at home - by acquainting you with the services, schools, clubs and societies that are currently active in the villages.

CDC Conservation Area Review

With this Sibford Scene you have received a map, letter and envelope from Cherwell District Council. You are asked to consider the two questions in the letter and draw on the map any changes you feel to be needed. In answering question 2 it will help if you mark the buildings on the map as well as giving the name on the back. Please remember that the maps are studied by people who don't know the area as well as the residents do. The timescale the Council are working to is quite tight so early responses would be appreciated.

REIKI
HEALING FOR HUMANS
AND ANIMALS

LYN SIMMS
MASTER PRACTITIONER

01295 780 655



villagefriend.com

*The new rural community website
for local people, by local people*

NOW 100% FREE !!!

WANT TO PROMOTE A COMMUNITY EVENT? USE US! ITS FREE!

WANT TO BUY OR SELL STUFF EBAY STYLE? USE US! ITS FREE!

WANT TO PROMOTE YOUR BUSINESS? USE US! ITS FREE!

*Local community events & info, buy & sell locally, promote your local business or service,
web-page sized adverts, up to 8 free images/photos, up to 3000 characters of text,
Google map of where you are, a link to your website if you have one,
people can leave testimonials, social networking links to Facebook & Twitter, etc*

Take a look for yourself!

villagefriend.com





SIBFORD DESIGNS ON SHOW AT COVENT GARDEN

Fashion designed by five students at Sibford School was specially selected to form part of a prestigious exhibition held at the Royal Ballet in London's Covent Garden.

Sibford School was one of just nine schools nationwide to be invited to take part in the exhibition, organised as part of the 50th anniversary celebrations of The Society of Headmasters & Headmistresses of Independent Schools (SHMIS). The show, which ran from Monday 10 October until Friday 14 October, celebrated excellence, quality and diversity in fashion design and featured work produced mainly by A Level and AS students.

Sibford pupil Milan Rai (16) is pictured with his 'spider corset', one of the exhibits in the Covent Garden exhibition.

HEAD ATTENDS STATESIDE CONFERENCE

Sibford School head Michael Goodwin visited the States last month to share examples of best practice at the American Quaker Heads' Annual Fall Gathering which took place in Philadelphia.

Michael, who is one of four Quaker heads in the UK invited to attend the conference, met with around 80 head teachers from across the United States to discuss community service and service learning. He also visited Germantown Friends School and William Penn Charter School.



FENCE-WORKS

Domestic Fencing Specialist

To Renew or repair your garden
fencing

and trellis work

close-board fencing specialist

free estimates & advice

call mark chater

07500 491402 / 01295 780294

Bed & Breakfast

AGDON FARM

Nr Brailes

Comfortable rooms

in old stone farmhouse

Tel: Maggie Cripps

01608 685226

DAILY MAIL CUP

Sibford School under 15s Rugby team sailed through the second round of the Daily Mail Cup with a 26-14 home victory over St Paul's Catholic School, Milton Keynes. A bye in the third round means they are now through to the fourth round.

NOVEMBER CALENDAR

Monday 7 November: 6.30pm Life Drawing

Monday 14 November: 6.30pm Life Drawing

Wednesday 16 November Café Scientifique ... 'From pure research to cancer therapy?' Speaker Blanka Collis, a postdoctoral researcher in the DNA damage and repair group at the Weatherall Institute of Molecular Medicine, Oxford University.

Friday 18 November: 10am Open Morning

A chance to see what Sibford School can offer your child. For further information contact Elspeth Gregory on 01285 781300

Monday 21 November: 6.30pm Life Drawing

Monday 28 November: 6.30pm Life Drawing

Wednesday 30 November: 6.30pm Community Reading Group
'In the Woods' by Tania French

Advance Notice

Friday 2 December: from 2pm Christmas Fayre Craft stalls, refreshments & Santa All welcome

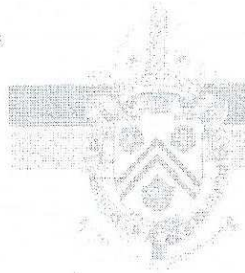
SWIMMING POOL

Sibford Swimming Pool is open to the public in the evenings and at weekends. For opening hours visit the website www.sibford.oxon.sch.uk and click on 'Public Facilities'.

Damian and Debbie

Welcome you to enjoy the atmosphere
of our 16th century thatched Inn.

- Bar and a la carte menus available lunch & dinner.
- Excellent Sunday lunch - to suit the weather!
- New food and wine takeaway menu.
- Wednesday steak and wine night £15.00
- Selection of fine wines and real cask ales.
- Happy hour and a half every Wednesday evening!
- Gift vouchers available.



THE
WYKHAM
ARMS

Temple Mill Road
Sibford Gower
Nr. Banbury
OX15 5RX

Tel: 01295 788808 / 07

Take a look at our new
website
www.wykhamarms.co.uk

email.
info@wykhamarms.co.uk

Opening Times
12.00am-3.00pm
6.00pm-11.30pm

Bar only Sunday Night
Closed all day Monday
(Except bank holidays)

Report of Sibford Gower Parish Council Meeting – 21st September 2011

The Chairman's Report: The Chairman referred to the recent sad loss of Mrs Eileen Haynes who had regularly attended Parish Council Meetings and was very much involved in community life. The Chairman referred briefly to The Bishop Blaize and it is understood that the matter of the ownership of the adjoining piece of land claimed by the Barton Family as theirs is still to be resolved with a recent court hearing having been adjourned and to be heard at a later date. With regard to the horse box and metal barrier positioned on the roadside verge, the matter is still to be resolved by Oxfordshire Highways. Land at Burdrop adjoining Piggy Path: The Parish Council some time ago approached Cherwell District Council which owns the land as to whether it may be used for allotments. The response was that the District Council would be reluctant to see the land transferred to the Parish Council for allotment use unless it was satisfied that there is no foreseeable prospect of development. The Chairman instructed the Clerk to approach the District Council to enquire as to the possibility of a relatively short term lease (say for twenty years). District Cllr George Reynolds, present at the Meeting, said that he would also look into the matter. The Chairman made reference to the fact that the Ferris and the Gower had been combined for planning purposes and are now classed as a Category A Village which could make them liable for a larger increase in house building. He is in discussion with the Chairman of Sibford Ferris PC and will report back in due course. He had prepared a letter that he had drafted to the Electoral Review concerning the reduction of representation for rural areas and this was approved by the Meeting. Sibfords Community Plan: Mrs Sue Mattinson reported on the current position. She stressed the importance of the Household Questionnaire which will be delivered to all households in November. Clerk's Report: 1) Merging of Sibford Ferris and Sibford Gower Parish Councils - This matter has been raised from time to time bearing in mind the shared community facilities (eg Church, Schools, Village Hall, Surgery, shop etc). 2) Salt bins: Details had been received from Oxfordshire County Council regarding the arrangements for the coming winter season. The County

Cotswold Sketchbook

original oil paintings

Oil paintings produced every working day
for sale online at:

www.cotswoldsketchbook.co.uk

visit the ARCHIVE pages to see what's
sold and what's still available

Council will fill ALL bins once at the beginning of the winter season. It will not refill the bins as required, the responsibility being left to the Parish Council which will have to find storage space for extra salt to be delivered and then be responsible for filling bins as and when necessary. Highway Matters: The Clerk reported that on 1st September he toured the Parish with Mr Tim Wilde (Oxfordshire Highways) with regard to outstanding matters still to receive attention from Oxfordshire Highways. They are 1) The installation of a mirror at the exit of Bondsend Lane, 2) Kerbing the left verge to the entry to Bondsend Lane, 3) The lowering of the kerb at the junction of Pound Lane and Main Street and 4) Resurfacing the road to the Sibford Surgery. Burial Ground: Very satisfactory maintenance continues to be carried out by Mr Cedric Brown and the costs are shared with Sibford Ferris Parish Council. Following the first two burials, a problem has arisen in that the grave diggers have been depositing the surplus earth (mainly stones) nearby creating an unsatisfactory appearance of the Burial Ground and the possible impact on future maintenance. The Clerk was instructed to speak with the Funeral Directors to ascertain whether a satisfactory arrangement for the surplus earth to be removed can be achieved. Churchyard: Cllrs Peter Abbott and Alan Parkin have been in discussion with Sibford Ferris Parish Council regarding maintenance of the Churchyard as to sharing maintenance costs. Date of Next Meeting: This will be on Tuesday, 22nd November 2011 starting at 8pm in the Staff Room of Sibford Gower Endowed Primary School. Residents are warmly invited to attend and express views and comments. Full Minutes of the Meeting may be obtained from the Clerk - Peter Hardman. Tel: 780391 or email (hardman214@btinternet.com)

**Serenity at Sibford
Gautherns Barn
01295 788463**

**Have you tried the new updated Guinot Hydradermie2 Facials?
Outstanding long-lasting results are achieved
— a must for all ages, male & female!**

Choose from:

- A Deep Cleansing Facial**
- A Non-Surgical Lifting Facial**
- An Anti-Ageing Facial**
- Or one that combines all of the above – Perfect!**

**Waxing * Shellac Gel & Bio Sculpture Gel Nails * Manicures
Pedicures * Sports & Remedial Massage * Pilates
* Eyelash Extensions**

*** Reflexology * Reiki and lots, lots more!**

**New Hours from September: Monday-Thursday 9.30-2
Friday 9.30-6, Saturday 9.30-2 www.serenityatsibford.com**

Father Christmas is coming to Sibford on 26th November
and is paying a special visit to the
Holy Trinity Christmas Bazaar
at the Village Hall (2 - 4:30pm).
He tells me he is looking forward to seeing the children!

Any donations towards the following stalls would be much appreciated:
White Elephant - Tom Pratt 780489 Raffle - Jean & Bill Dunkley
Hampers - Petra Berry 780462 & Kathy Yorke 780361
Books - Martin Layer 788139 Cakes & Produce - Evie Broughton 263460
Bottles- John Marshall China & Glass - Helen Earle 788736
2nd hand toys - Amelia Earle 788736

We look forward to seeing you there, many thanks - Amelia Earle (Organiser)

Sibford Methodist Chapel Coffee Morning
Saturday 3rd December 10 - 12 noon All Welcome
Carol Service
Sunday 11th December 11am Preacher Chris Cond



Oddjob

CARPENTRY • PLUMBING

ELECTRICS • HOUSEHOLD REPAIRS

**No need to call in four
different contractors ...*Call me!***

For your building, DIY and home improvement needs
KITCHEN & BATHROOM FITTING • HEATING INSTALLATION
CARPENTRY • PLUMBING • ELECTRICS • SECURITY ... and more

DIY? Don't do it yourself ...*Call me!*

For a comprehensive and reliable local service,

Call HUGO SEELY on 01295 780355

FREE NO-OBLIGATION ESTIMATES

Trading in the Sibfords since 1992 - Excellent local references available

BANBURY UNITED FOOTBALL CLUB
proudly present from
THE HOME OF DISNEY WORLD IN ORLANDO
the reigning USA champions

THE BRASS BAND OF CENTRAL FLORIDA

IN CONCERT ST. MARY'S CHURCH, BANBURY
TUESDAY, THE 15TH NOVEMBER 2011--7.30pm

Five years to the day, since their sensational appearance in Banbury, the band return to play an
entertaining programme of music in support of

FRANK WISE SCHOOL

KATHARINE HOUSE HOSPICE

Tickets available from Monday, the 5th September next:-

One Man Band
8/9 White Lion Walk
Banbury OX16 5UD
T:- 01295 266788

David Bennett
3 Mannings Close
Sibford Ferris OX15 5RA
T:- 01295 780373

E:- sales@ombmusic.co.uk

Tickets:- £15 Concessions, OAP's & Children £10



Small change makes a big difference

A collection box like me will collect around £10
a month in your local shop. We are actively
seeking volunteers to place and manage boxes
in your area.

It doesn't take long to empty your tin and
bank the money,
but it all adds up.
Help us to be there
for people in

Oxfordshire.

Thank you

Contact Chris 01235 552680
cwhaetcroft@redcross.org.uk

BIKE REPAIRS & SERVICING



General servicing
Repairs
Cleaning & maintenance
All makes and types of bike
Reasonable rates, speedy service

For all your bike repair needs, call: 01295 780355

Comprehensive
Freelance PA or VA Service
(based from home or your
home/office to suit requirements)

Experienced in a variety of business
skills - marketing / online marketing
sales / events / advertising
databases / copywriting
project management / mail shots

One off or long term bookings

References available
Competitive rates assured

Harriet Mountford
BA (hons) Business Management
01295 788519 / 07813202726

Call to chat through
your requirements

NEIGHBOURHOOD WATCH

POLICE phone no 08458505505

CRIMESTOPPERS 0800555111

TRADING STANDARDS 08450510845

Please remain aware and follow Police advice.

We now have a Banbury Rural Neighbourhood Monthly Update.

PC Becky McLeod has a new job; PC Duncan Vale is the new Neighbourhood Specialist Officer.

Burglaries are on the increase. Any person selling at the door should have a Peddlers Licence. The Police do advise us not to buy or sell at the door or have any work undertaken by cold callers. Please take this advice seriously and report any suspicious behaviour or cold calling with as much information as possible: the number of people with descriptions, location, vehicle colour, type, reg number, name of employer, name of caller and ant flyers etc.

There have been fuel thefts in the area. Please make sure fuel oil and diesel tanks are secure and locked if possible, especially if they are easily accessible. Crime prevention advice is available through the Neighbourhood Team.

Vacancy - Clerk/Responsible Financial Officer

There is a vacancy for the above position with Sibford Ferris Parish Council for 5 hours a week that includes the management of the Parish Council funds and meetings.

Remuneration package details on request.

Please contact Carolyn Heather for further details: 01295 780695

Good Quality Horse Hay £3.50 per Bale 780541

FRANCIS MORDAUNT MCFHP MAFHP

*Member of the Open College of Foot Health Professionals
Member of the British Association of Foot Health Professionals*

FOOT HEALTH PROFESSIONAL

To enquire about a home visit please

telephone: 01295 730615

Professional Foot Care in Your Own Home

Oxon Computers

Qualified PC Engineer

Danny, Company Owner

PC repair, maintenance & configuration

Tel: 01295 788766 Mobile: 07767 025752

Fax: 01295 788766

Email: Admin@oxoncomputers.co.uk



QUALITY FISH DIRECT FROM

Proprietor: T.P. Martin

Tel: 07812 361853

GRIMSBY MARKET

Best fresh fish and shell fish to your
area direct from Grimsby on the
Lincolnshire coast

I'll be at Sibford Village Hall car park
EVERY MONDAY from
approximately 4pm till 5.30pm

serénité Complementary Therapies

truly holistic treatments



Aromatherapy, Hot Stone Massage,
Swedish Massage, Facial Massage, Lymphatic Drainage,
Indian Head Massage & Reflexology

Baby Massage - Pregnancy & Post Natal Massage

Jeanne Corcos - Conisbee Tel 07896 242362

Sibford Gower and Banbury

www.serenite.co.uk

O
p
u
s

Alan Berks

SPECIALIST INSTALLER

Kitchens and Bathrooms

Natural and handmade

floor and wall tiles

Solid wood flooring

01295 780652

07816 592 124

Alan.berks@btopenworld.com

The Spinney

Sibford Gower, Banbury, Oxon,

OX15 5RS

Pilates

Relax, Re-condition and

Re-energise

Small Group Intensive Courses

Individual Sessions

by appointment with

Madeleine Wilson B.SC., M.SC

Master Mat &

Studio Instructor

Personal Trainer

07905 953 300 or

01295 780 279

email

mwl@linuxwaves.com

Miss 'T' Catering.

Catering for events such as:

Anniversaries, Weddings,

Christenings, Birthday parties,

Funerals

And private dinner parties.

~.~.~

Also available

Cutlery and Crockery Hire.

Contact Victoria Taylor on:

Mob: 07841 910037

Home: 01295 788924

Richard Wallington

Builder

Block Paver Drives a Speciality

Also Extensions, Patios

Fencing etc.

High Quality Work, Free Estimates

01295 780705 07743 932545

(Sibford Gower) (Mobile)

HOLY TRINITY CHURCH NEWS

www.thesibford.org.uk/holytrinitychurch

Those who were able to attend the funeral service of our Rector, Timothy Wimbush witnessed one of the most memorable possible. The decision to hold it in St Mary's Church, Banbury was proved to have been wise as about 600 attended, far more than any of his own Benefice churches could accommodate. There were four Bishops present, our own Bishop Colin taking the service and our former Bishop Anthony, later Bishop of Ely and now retired, gave the second address, the first being given by one of Timothy's close friends and former Theological College fellow student, Rev Stephen Leach. Tim had himself planned the order of service and included 5 of his favourite hymns which he so much used to enjoy playing. His friend Ben Elvidge played the *Toccata and Fugue in D minor* by JS Bach between the two addresses and the choir of 60, the majority consisting of the Benefice Choir with many additions from Deanery and other choirs sang an anthem by John Rutter accompanied by the St Mary's organist Cynthia Hall FRCO.



*Sarah Walker
Vivienne Nott*



fresh flowers, fresh ideas

Gorgeous bouquets & arrangements

Wedding bouquets, churches,

marquees and receptions

Flowers for supper parties,

house parties and celebrations

Funerals and memorials

Contact :

Sarah :01295 788595 Viv:01608 652819

GODSWELL NATURAL THERAPY CENTRE

*Godswell Lodge, Church Street, Bloxham,
Banbury, Oxon OX15 4ES*

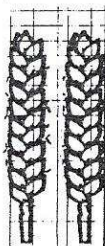
Tel: 0844 477 8595

Acupuncture, Alexander Technique,
Bowen Technique, Chiropody/Podiatry,
Clinical Pilates, Cranio-Sacral Therapy,
Counselling &
Cognitive-Behavioural Therapy (CBT)
Homeopathy, Hypnotherapy, Osteopathy,
McTimoney-Corley Spinal Therapy,
Physiotherapy & Sports Injury Clinic,
Reflexology & Remedial Massage

Fully qualified and professional therapists

See website for further details:-

www.bloxhamsurgery.co.uk
(follow the link to Godswell NTC)



**FARMHOUSE
BED AND BREAKFAST
GRANGE FARM,
SWALCLIFFE**

*Enjoy warm hospitality & peaceful
surroundings in our comfortable
18th C Farmhouse*

**CONTACT BARBARA TAYLOR
TEL.01295 780206 or 0771 2895728
WWW.swalcliffegrange.com**



Contributions for the
December & January
Sibford Scene
to the Shop or Editor
by November 15th

Canon Glyn Evans read the Gospel and Mary Nash read a poem found in Tim's Funeral file. Perhaps the most poignant moment came when Tim's coffin was carried by his sons and friends to the accompaniment of the theme tune of Test Match Special and finally seen off at the door by his eleven churchwardens. Lord and Lady Saye and Sele generously offered the Great Hall of Broughton Castle where most of the congregation attended the tea afterwards which was organised by Victoria Taylor with a multitude of cakes provided by members of the Benefice many of whom also assisted Victoria with serving it.

At this stage it seems appropriate to register the deep debt of gratitude we have for Tim over his 35 years of ministry in our Benefice. He has had a difficult task to minister to the widely spread population of initially 4 villages and then 7 when the Benefice was enlarged.

We also have a significant debt to John Tattersall, so recently ordained, who has so well organised the Benefice services and taken most of them all the time Tim was absent on sick leave.

The Harvest Thanksgiving service and "Bring & Share" lunch afterwards was exceptionally well attended. Isabel George and her helpers organised the children wonderfully during the "Sermon in action" into making a Harvest Pudding which was later baked in the Village Hall and consumed with great pleasure.

Please support the Christmas Bazaar on Saturday 26th November the organisation of which Amelia Earle has very kindly taken over supported by Richard and Helen. This work was started by Eileen Haynes before she was so suddenly and sadly taken from us.

Before that, on Sunday 13th there will be our usual Remembrance Day service at 10.55 am then on Sunday 20th November Rev Dr Dan Inman, the Curate of Deddington will be taking our Communion service at 9.30 am and preaching. It will be interesting to hear from a young dynamic theologian still in his 20's though we are very fortunate to have the services of so many older clergy who bring to us such a wide variety and depth of knowledge and experience in our regular services. It is hoped that there will be a good number to support Dan in this his first visit to Holy Trinity.

Advanced notices for Christmas: Traditional Carol Service led by the Benefice choir at Sibford on Friday 16th December at 7.00 pm; Christingle Service on Sunday 18th December at 4.30 pm. Other services to be announced later.

The Wimbush Family offer their heartfelt thanks to all those who have offered support and sent cards. It has been greatly appreciated.
--

Church Services

Society of Friends		Sunday at 10.30 am
Methodist		Sunday at 11.00 am
Roman Catholic Mass	Wroxton	Sunday at 9.00 am
	Brailes	Sunday at 11.30 am
Baptist	Hook Norton	Sunday at 10.30 am
Church of England, Holy Trinity, Sibford Gower, as below.		
Nov 6th 10.00 Benefice Eucharist at Broughton (Rev John Tattersall)		
Nov 13th 8.00 Holy Communion (BCP) (Rev John Tattersall)		
10.55 Remembrance Day Service (Rev John Tattersall)		
Nov 20th 9.30 Holy Communion (BCP) (Rev Dr Dan Inman)		
Nov 27th 10.00 Benefice Eucharist & Confirmation (Bishop Colin)		

Sibford Methodist Chapel Preachers for November.

Sun 6th Rev Alan Swann HC

Sun 13th Service at the Church

Sun 20th Rev P van de Kastelee

Sun 27th Rev S Bywater



RED HORSE VALE LTD

All Types of Fuel, Coal, Smokeless. Gas,
 Logs, Kindling, Barbecue Needs
 Central Heating Oil, Oil Tanks & Coal Bunkers
 Landscape & Building Materials. Garden Centre &
 Garden Supplies. Farm & Country Sundries
 Equestrian Products, Horse & Pet Feeds
 Open: Monday - Saturday 8am - 5pm
 Windmill Farm, Banbury Road (A422),
 Oxhill, Warwickshire CV35 0RP
 Tel: 01926 642 832
 Fax: 01926 642 853

slight adjustments

the woman's touch

Lighting
Flooring



Curtains
Blinds



Colour
Consultation



Artwork
Gilding



Painting &
Decorating



We can help you create the perfect home and living space by making the most of what you already have - tailoring everything to your budget whether you want a 'makeover' to maximise a house sale, to decorate a room or you simply require a pair of curtains.

Painted
Furniture
& Kitchens



Accessories
Mirrors



Garden &
Carpentry



Upholstery
& Soft
Furnishings



Free consultation and estimate for any size job
 Contact Rachel: 07913 546 867
www.rachelberger.co.uk

Sibford Bus Services

Cherwell Rural Dial-A-Ride Scheme

A mini bus with tail-lift to take **elderly or disabled people** and escort to Banbury (max fare £1.60) Door-to-Door service. Book at least one day in advance. Operates on Wednesdays & Thursdays. Phone 263777 for details. BCTA also takes bookings for groups of 8 or more on a weekly/monthly basis (Wednesdays & Thursdays) to and from Banbury. Tel; 263777

Stagecoach – Timetable commencing 31st May 2009
Mondays to Saturdays (No services on Sundays or Public Holidays)

Bus 50A. From Banbury towards Stratford-upon-Avon

Banbury, Bus Station	08.30	10.55	12.45	14.26	16.05	17.10	18.10
Sibford Ferris, Cross Roads	08.52	11.17	13.07	14.48	16.27	17.32	18.32
Sibford Gower, School	08.55	11.20	13.10	14.51	16.30	17.35	18.35
Shipston,	09.15	11.40	13.35	15.11	16.50	17.55	18.55
Stratford on Avon, Wood St.	09.40	12.09	14.04	15.40	17.19	18.24	19.24

Bus 50A. From Stratford-upon-Avon towards Banbury

NS

Stratford on Avon, Wood St	06.20	07.10	09.05	11.10	13.10	15.10	16.24
Sibford Gower, School	07.04	07.55	09.56	11.56	13.56	15.56	17.14
Sibford Ferris, Cross Roads	07.07	07.58	09.59	11.59	13.59	15.59	17.17
Banbury, Bus Station	07.28	08.25	10.21	12.21	14.21	16.21	17.39

NS = Not Saturdays

All buses will operate low floor wheelchair accessible vehicles.

For complete details of all the stops that are served by service 50A, timetables are obtainable from the Tourist Information Centre in Castle Quay, Banbury.

Fares:-

Sibford Ferris & Sibford Gower to Banbury: Single £2.50 (Child£1.25)

Return £4.70 (Child £2.35)

Sibford Ferris & Sibford Gower to Stratford: Single £4.30 (Child £2.85)

Return £6.30 (Child £4.20)

Unlimited travel Cards are available for 1, 7 or 28 days but are regional and need to be bought in advance. Contact the Stagecoach sales office in Oxford tel; 01865 772250 for more details.

Calendar of Events

November

- Tue 1st Mens Breakfast Club at Wyatts at 09.15 am.
- Tue 1st Friendship Club Speaker meeting p4
- Sat 5th Bonfire and Fireworks at the Primary School 5.30pm p5
- Tue 8th W.I. "Bus Across the Andes" p6
- Wed 9th Mobile Library in the Sibfords (2.40 - 4.10pm)
- Wed 9th Horticultural Society "A Blaize of Glory" p9
- Sun 13th Remembrance Day Service 10.55am p20
- Tue 15th Friendship Club Outing p4
- Tue 15th Central Florida Brass Band Concert p17
- Thu 17th Sibfords Society - Violin Making. p3
- Sat 19th Village Hall Quiz 7.00pm p8
- Tue 22nd Christmas Shopping Evening 6.30pm Village Hall p5
- Tue 22nd Sibford Gower Parish Council Meeting 8pm. p14
- Wed 23rd Mobile Library in the Sibfords (2.40 - 4.10pm)
- Sat 26th Church Christmas Bazaar p16

December (part)

- Sat 3rd Methodist Chapel Coffee Morning 10 - 12 noon p16
- Tue 6th Mens Breakfast Club at Wyatts at 9.15 am.
- Wed 8th Mobile Library in the Sibfords (2.40 - 4.10pm)
- Sun 11th Methodist Chapel Carol Service 11 am p16
- Fri 16th Traditional Carol Service 7.00pm in the Church p21
- Sun 18th Christingle Service 4.30pm in the Church p21
- Wed 22nd Mobile Library in the Sibfords (2.40 - 4.10pm)

Cover picture. The Post Office (it was then) in Sibford Ferris

Sibford Scene

Editor; Adrian Lamb. Grounds Farm, Sibford Ferris. 780380

e-mail adrian.lamb1@btconnect.com

Advertising; Ivor Hopkyns, Elmridge Farmhouse, Sibford Gower,

Banbury, Oxon. OX15 5RT. Tel 788367

e-mail sallyandivorhopkyns@hotmail.com