

March 2011

No. 330

Mens Breakfast Club

1st meeting on Tuesday 1st March 9.00 am

Village Hall Family Quiz

Saturday March 5th starting at 4 pm,

Sibford Ferris Litter Blitz

Saturday 12th March. Lanes End Corner at 10.00 am

Lent Austerity Lunch

Thursday 24th March at Wyatts Close, Sibford Gower 12.30pm

Primary School Art Exhibition

Saturday 26th and Sunday 27th March 10.30 - 4.30 pm

Nature Notes

Jan 20th. It is interesting to see the birds that are attracted to bird tables in different positions. We get lots of tits and blackbirds while my daughter in more open countryside gets more goldfinches than anything else. Sometimes as many as 20 at a time.

Jan 22nd. The female blackcap has now learnt to fly up to the globe feeder and hang on like the tits do to take sunflower hearts. Learning quickly must have helped it to survive the severe weather at the end of last year.

Feb 13th. Although the weather is milder now the tree creeper that has been coming on to our window ledge to take crumbs of bird bun that I put there for the robins, still comes which gives us a close up view of it. The goldcrest that I mentioned last month is also still coming to the bird table frequently.

Feb 17th. My son in law rang to say there were masses of twitchers near Chipping Norton all trying to see an oriental turtle dove. I think it could be a rufous turtle dove which my old bird book lists as an accidental (seen less than 20 times in Britain) as that has the Latin name of streptopelia orientalis.

Feb 18th. The rooks are now starting to build or repair their nests. This morning they are snapping twigs off the silver birches. They seem to use live twigs in preference to fallen ones. It may be that it is easier to get airborne with their load from a tree.



HOLMBY HOUSE
SIBFORD FERRIS
A stunning setting for
special celebrations

From Buffets to Gourmet Dinners

Formal dining for large groups
Garden parties Business meetings
Luxurious B & B
Self-catering accommodation
Tel/Fax: 01295 780104
www.holmbyhouse.com
Sally.wass@btinternet.com

THE VILLAGE SHOP
HOOK NORTON
NATIONAL LOTTERY
Grocery - Greengrocery - Bakery
Wines - Spirits - Confectionary
Newspapers - Magazines - Cards
Video Rental - Bottled Gas
Open Monday to Friday
7 am to 8 pm
Saturday 8 am to 8 pm
Sunday 8 am to 6 pm
Telephone: 01608 737245

ART EXHIBITION & CRAFT FAIR

Sibford Gower Endowed Primary School

Sat 26th and Sun 27th March 2011

10.30am – 4.30pm

More than 200 artworks by national and local artists

All day café

Quality Craft Stalls

Children's Craft Workshops

For more information please contact:

Sibford Gower Endowed Primary School PTA – susannah.arnaboldi@gmail.com

Sibford Gower Endowed Primary School
Acre Ditch, Sibford Gower, Banbury, OX15 5RW



**FOLLY FARM
BACK PAIN
CLINIC**

ACHES & PAINS?

I can help you!

**Just visit your local clinic
between Sibford & Swalecliffe**

Contact: **John McArthur**
Back Pain Therapist
B.Sc. & Dip (Chiropractic)

Tel: 0845 862 4 862
(Local rate)

Mob: 07740 404 678

Ann Woolgrove

FABRICS, CURTAINS & SOFT FURNISHINGS

Personalised design service and consultancy in
your own home.

Beautiful bespoke Curtains, Roman & Roller
Blinds & Soft Furnishings, handmade to the
highest standard.

Advice on every kind of Fabric from numerous
suppliers.

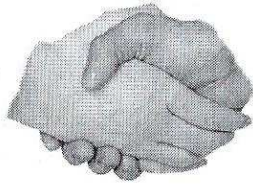
Stylish complimentary Cushions & Loose
Covers.

Re-upholstery service.

Custom made Bedspreads & Headboards.

New Sofas & Chairs

Tel/Fax: 01295 788145
Email: info@annwoolgrove.com
www.annwoolgrove.com



Friendship Club

We open this edition of the Friendship Club's Sibford Scene with having to send our condolences to Greta on the passing of her husband.

Also to wish a speedy recovery to Erica, having broken her ankle.

Our next meeting will be held March 1st in the Village Hall when we will be holding our Big Birthday Party, there are at least 6 members with a birthday around this time. On March 15th we are off to Webb's of Wychbold. Times of departure will be arranged at the Village Hall meeting.

Sibford Cricket Club AGM

7.00pm, Sunday 13 March

Wykham Arms

All current players, new players and villagers welcome.

Sibford Stores & Post Office

Sibford Ferris

OX15 5RG

Telephone 01295 788317 / 788348

YOUR LOCAL CONVENIENCE STORE AND NEWSAGENT

We deliver newspapers and magazines 7 days a week to all the surrounding area. Place your regular order today, whether for 1 day a week or 7. Always a wide selection of magazines available, specialist titles available to order.

Chilled & Frozen foods, groceries, cigarettes, beers, wines and spirits, fresh fruit and vegetables, pet foods, household goods, toiletries & medical requisites and lots, lots more.....

National Lottery, Photocopying, fax service, dry cleaning

We will also undertake your mailings for you, just ask.

Always an excellent selection of Hook Norton bottled beers in stock.

Telephone your grocery order for free local delivery.

OPENING HOURS

Monday to Saturday 6.00am to 8.00pm

Sunday 6.00am to 6.00pm

PLEASE SUPPORT YOUR LOCAL POST OFFICE, THERE ARE LOTS OF PRODUCTS AND SERVICES AVAILABLE ON YOUR DOORSTEP

NATIONAL CENSUS – 27th MARCH 2011

The census is a national event that collects information to plan services and facilities and because every penny counts these days, it is essential that you help shape what your local community needs – like schools, hospitals, housing, roads and emergency services. So, please, make sure that you complete your census questionnaire on 27th March 2011. So, what do you need to do? Nothing right now. Your questionnaire will be posted to you in a purple census envelope in March. There will be two ways to complete your questionnaire – either online or on paper. A pre-paid envelope will be provided for postal return.

To find out more about the census visit **www.census.gov.uk**

Parish Councils of The Ferris and The Gower.

Wanted a vegetable garden or allotment in the Ferris or Gower area that is no longer required.
Please ring Trevor Rankin on 788363.

Sibford Ferris Annual Litterblitz Saturday 12th March 10am

Meet at Lanes End Corner and we will hand out bags etc and sort out areas to cover. The aim is to litter pick the verges and public areas in the parish before the grass grows and makes the job harder.

If you would like to take part but cannot make the 12th please contact Adrian Lamb 780380 and let him know which area you can do so it does not get done again.

The more volunteers the less time it takes so
please come and help.

LOCAL HONEY

USUALLY AVAILABLE

Bill Wealsby

Tel: 01295 788405

Swarms of bees wanted

A. Sabin

LOGS

Millbarn, Hook Norton

Telephone 01295 788421

Mobile 0781 7709044



Sibford WI Meeting – Tuesday, 8th February 2011

Nineteen members were greeted by President Glennis Hardman with a special welcome to Kathleen Winter who renewed her membership after a break of one year. The subject of this month's speaker, Moira Byast, was food – BUT food with a difference, not a cupcake or muffin in sight! Instead "Tasting the Past" was a brief history of food and cooking through the ages. Moira's main sources of her research had been both archaeological and written evidence as well as the Art of each period. The earliest known British kitchen is believed to be circa 1000BC. This was discovered during an archaeological dig which had also shown that eating was a communal occasion with everyone sharing the staple food of potage, a gruel type dish consisting of wild plants, leaves etc but occasionally including mussels, seaweed, shellfish etc. The Romans had a more sophisticated palette and also possessed other skills e.g. grinding grain into flour for bread and similar items. Consequently there was more variation in diet - except for the poor for whom potage remained the main source of food. Comparatively few records exist about Saxon times after the departure of the Romans and during this period most of the Roman technology and way of life was abandoned. Cooking was now mainly over an open fire with spit-roasting of woodland animals such as pig. One consequence of the arrival of the Normans was a two-tier society, the higher of these enjoying a richer and more varied diet which included meat and fish. This two-tier society often resulted in each having its own word, one of Norman origin and the other Anglo-Saxon, to identify similar items. For example, sheep:mutton, pig:pork. By the mid (14th wheat, rye, oats, beans etc. were being cultivated. Consequently bread had replaced potage as the staple food. Food was more varied and delicacies such as Gilded Gingerbread were also being served to the aristocracy at banquets; the poorer were served plain gingerbread. (Hence the saying "...that takes the gilt off the gingerbread"). In fact many of today's expressions such as: upper crust, eating humble pie, take the rough with the smooth all originated from those early days of food preparation. And it should be mentioned here that it was men who were in charge of the kitchens and cooking of the food, and they were regarded as a very important members of the community. With the Elizabethan invention of chimneys, cooking progressed from free-standing wood-fuelled fires to within the fireplaces. Eventually sea-coal was discovered and replaced ever-decreasing wood supplies. By 1830 and despite its high cost the use of sugar was increased rapidly and those with black, damaged teeth were regarded with envy because this was proof of sufficient wealth to purchase it. Moira concluded her very entertaining talk with the offer to try various sweetmeats, which she had prepared in advance, including gilded gingerbread, Roman sweetcake with wine dip, Norman leathers, Roman apricots in an almond wrap. In true tradition a happy ending to a very enjoyable tale! Valerie Taylor thanked Moira for her fascinating talk. Charlotte Cox and Gaynor Harper-Tarr served a delightful tea. Our speaker then



The First, Hook Norton, Banbury, OX15 5DD
Email: enquiries@graphics-direct.co.uk
Phone: 01608 730555 Fax: 01608 730271

For all types of Vinyl Graphics & Signage.

Theresa Harper

DESIGNING PRODUCING & FITTING

judged the competition for 'An Old Recipe Book'. Daphne Lenton came first, Jan Warner second and Margaret Gardiner third. On Tuesday, 8th March Dr Gillian White will be speaking on 'Portraits of Queen Elizabeth I' As it is known that Dr White gives an outstanding presentation, representatives from other WI's in the area have been invited. Village guests will also be made very welcome. The competition is for 'An Old Portrait' (either a photograph or a painting).

Margaret Gardiner

EXTENDED SUPPORT FOR THE ELDERLY IN OUR COMMUNITY

There are many people in our community who find it difficult to get to Doctor, Dentist or Hospital appointments, collect prescriptions or sometimes do simple shopping either in our village shop or in Shipston or Hook Norton. We know that friends and neighbours are often prepared to help but many of our elderly community come from a generation reluctant to ask for help on a regular basis.

Fielding Day Centre is planning to extend its operation to the local community by offering a more organised service of volunteer transport that can be accessed five days a week through a simple telephone call.

We are looking for volunteers to offer three or four hours a month either with a car for transport or to answer the telephone in their own home on one morning a month.

The success, indeed the start of this new initiative, will depend on the number of volunteers who come forward. We are making this appeal across the communities of the Epwell, Shutford, Tadmarton, Swalcliffe and of course the Sibfords. These are the villages that are currently served by Fielding Day Centre.

If you feel that you would like to help and for more and full details please contact Keith Hicks (01295 780259 - keith@hicks-sibford.co.uk) or talk to one of our committee members.

Sports & Remedial Massage

Aid sore, aching muscles and injuries

Natural Face Lift

Using the beautiful Japanese facial massage

Special introductory offer £25.00

Victoria Smith

ITEC DIP SPORTS MASSAGE, VCTC, MIGHT

01295 780610

07974 231571

Micks Sticks

Fire Lighting Wood

For Sale

£2.50 per big bag

Call in anytime and ask

for Mick Canning, at

The Old Malt House,

Sibford Ferris

Tel; 01295 780321



JUDITH HANDS OVER THE KEYS OF THE DOOR

Judith Weeks has retired as Clerk of Sibford School Committee, after nearly 10 years.

The position, which is the Quaker school equivalent of Chair of Governors, has been taken over by Seren Wildwood. Judith, who lives in Sibford Gower, has been associated with the school for more than 25 years ... initially as a parent and, latterly, as a member of School Committee. She has been Clerk of Committee since March 2001.

"When I first came to Sibford there was no junior school and pupils were still being taught some subjects in the Old Manor across the road ... which was where the school had started way back in 1842," she said.

"There's been a tremendous amount of progress over the years and I've been privileged to have been associated with the school and watch it grow from strength to strength."

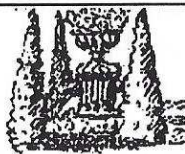
Seren, who lives in Sibford Ferris, works as a registrar in Cheltenham. She is married to Alex and their daughter, Hannah, has been a pupil at the school for the past three years.

"I'm looking forward to taking over as Clerk of Committee," she said. "This is an exciting time for the school ... we have just extended our age range to include three year olds and have started on a major development plan, the next stage of which will be the creation of a new design and food technology block. I'm extremely grateful to Judith for all the hard work she has done over the years ... she'll be a hard act to follow."

To mark Judith's retirement, fellow Committee members and friends presented her with bulbs which will be planted in the school in an area to be known as Judith's Piece.

Both Judith and Seren are members of Sibford Friends Meeting.

Judith is pictured (left) handing over the keys of Sibford School to new Clerk of Committee, Seren Wildwood.



BED & BREAKFAST

Buttslade House Cottage (Sibford Gower)
offers comfortable accomodation with
en suite bathroom overlooking a tranquil
English country garden.

Contact Diana Thompson

(01295) 788818

or janthompson50@hotmail.com

www.buttsladehouse.co.uk

SIBFORD MAKES A SPLASH FOR CHARITY

Sibford School has joined the world's
biggest ever charity swimming competi-

tion. Between 8 & 10 April, the school swimming pool will be open for people to compete in Swimathon 2011 and raise money for Marie Curie Cancer Care and the Swimathon Foundation.

Angie Wiffin, manager at Sibford Pool said: "Swimathon is fantastic as it brings people together raising money for charity and, at the same time, provides them with a great way of keeping fit. This is the first year we've registered for the competition and we hope we're going to get an excellent turnout."

Participants can compete in either a 1.5k, 2.5k or 5k challenge. Entries are open to both individuals and teams until 6 April.

2011 year has already proved a record-breaking year for Swimathon, with more than 580 pools across the UK signing up to host events ... the biggest number of pools in the event's 25-year history.

Olympic gold medalist and Swimathon President, Duncan Goodhew, said: "Last year's event enjoyed an astonishing 38 per cent rise in swimmers, and what's really exciting is that around 2,500 of those who dived in told us that they only started swimming again because they entered the event. From these grass roots right up to our overflowing international trophy cabinet, it seems that Britain's love affair with swimming really is back to stay."

Those wishing to compete in Swimathon 2011 at Sibford pool can do so on-line at www.swimathon.org or by phone on 0845 36 700 36.

Wednesdays commencing March 2: 8.30am -9.30am NEW adult only Early Birds swimming session ~ open to the general public

Wednesday March 2: 6.30pm. Community Reading Group ~ The Autograph Man by Zadie Smith

Saturday March 5 Banbury Young Musician of the Year Final

Monday March 7: 6.30pm Life Drawing Class (Adult Community Education)

Friday March 11: 10am Sibford School Open Morning ... come and see what Sibford School can offer your child

Monday March 14, 21 & 28 6.30pm Life Drawing Class (Adult Community Education)

Wednesday 30 March 6.30pm: Community Reading Group ~ Alone in Berlin by Hans Fallada

C.A. Berger

painting & decorating
interiors & exteriors
residential & commercial

Mobile: 07875 212 315
Office Tel: 01295 780 140

Half Loads

Full Loads

LOGS

Very Competitive Prices
Seasoned Hardwood Logs
Basil Page 01295 780215
Fencing Jobs Big or Small



Sibford Horticultural Society

Our first meeting of the year will be Dr. Page talking about "Tulips in the Wild and Cultivation" on Wednesday 9th March starting at 8.00pm in the Village Hall. All are welcome.

Sibford Scene Brown or White Envelope Campaign

Once again you have a small brown or white envelope
in your Sibford Scene.

Please put a small contribution (£3 suggested) in it and return it to our collection box which is behind the counter at the village shop. Your contribution, along with the revenue from the advertising, pays for the purchase of paper and the printing (photocopier, toner etc.) of the Sibford Scene. I hope that you find the Sibford Scene a useful publication and would wish to support the efforts of the 20 or so people who are involved in getting the Scene put together, printed and delivered to you ten times a year.

Many thanks.

The Firs Garage

- All Makes Vehicle Servicing
- Competitive Prices
- Factory trained mechanics
- MOT • Parts • Bodyshop • Fuel
- Large site with easy parking
- Extensive range of new and used vehicles

ALL MAKES SERVICING

Hook Norton • Oxon • OX15 5DD (1 mile north of Hook Norton Village)

Tel: 01608 737349/737641 • www.firs-garage.com

Family Business established 1960

The Sibfords Society

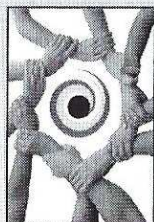
Our annual Old Fashioned Social was held in the village hall on Thursday 27th January.

Approximately 50 members and guests enjoyed a bring and share supper, mulled wine, a quiz and musical entertainment provided by Peter Hardman. Although the attendance was lower than in previous years due to family commitments and illness, the occasion was a success.

The next meeting will be on Thursday 17th March and this will be our AGM. The programme for 2011/12 will be available and members are reminded that subscriptions will be due at this time. Following the short business meeting, we will have two further items: Richard Hartree will give a short update on progress with the Sibfords Village plan. Margaret Gardiner who is currently maintaining our Society archives, will give a talk on her work as an archivist at Harwell.

We look forward to welcoming current and new members for what promises to be an interesting evening.

NEW RURAL COMMUNITY WEBSITE



For local people, by local people



**FIND LOCAL
INFO & EVENTS**
START YOUR OWN
COMMUNITY ADVERTS
FOR FREE!

**BID ON LOCAL
ONLINE AUCTIONS**
ADD YOUR OWN
'EBAY' STYLE AUCTIONS
FOR FREE!

USE LOCAL GOODS & SERVICES
PRODUCE AND MANAGE YOUR OWN
'WEB-PAGE' SIZE BUSINESS ADVERTS
ANNUAL ADVERTS ONLY £1 PER WEEK!

Tel: 0845 862 4268
admin@villagefriend.com

FREE REGISTRATION!

WWW.VILLAGEFRIEND.COM



Country Dancing Lives on in Sibford!

Members of the after school country dancing club have been working hard this term to learn a variety of traditional country dances in preparation for our very own May Celebrations.

The club, run by Anne Cody and Vicky Fletcher, have previously showcased their dancing skills at the annual Schools Country

Dancing Festival, a super event where the children from local schools relished the opportunity to dance to a real band (Apricot Pie) and even the parents couldn't help but join in! However, over the past few years, the number of local schools taking part in the festival have dwindled to such an extent that only two schools took part last year. As a result there are sadly no plans to run the festival this year.

After hearing the news, the club decided to take action and are planning their own event to showcase the dances and keep the tradition very much alive. In conjunction with the PTA, the school is planning a May Fete where everyone - children and parents - will be able to join in with dances. Tilly in Year 4 said "I'm really looking forward to the fete because Country Dancing is good fun and we can show people the dances we have learnt".

The club are now planning to learn May pole dances after the half-term break using their new May pole that was a gift to the school from the school leavers of 2010.

The Big Schools' Birdwatch

In January, Acorn Class took part in the Big Schools' Birdwatch.

First we learned about the different kinds of wild birds we might see. Using the RSPB website, we could see videos of the birds and listen too their different songs. Lots of children brought in bird books from home too. Then we made some bird food to attract them to our outdoor area.

We went out in groups and each group recorded the number of different birds we saw. Back at

Solid Pine Dresser VGC
£350 ONO

King Size Bed VGC
£150 ONO

Oak Sideboard £50 ONO

If interested please telephone 01295 788246

Over 50? Learn about computers in your own home!



We come to you - Learn in the comfort of your own home
One-to-one intensive learning - no need for group lessons
Advice, purchase & installation too!
Learn new skills & interests and exercise your brain!

 **SILVERTRAINING**

Call now to book your first lesson on 0845 862 0495
Or visit our website www.silvertraining.co.uk

school we made block charts to show what we had found and drew some pictures of the birds. We have sent our results in to the RSPB, who use them to monitor bird numbers across the country.

The 'Nursery Rhyme Challenge'

This term, children in Acorn Class have also been learning lots of nursery rhymes. They are taking part in a national scheme organised by the Booktrust, called 'The Nursery Rhyme Challenge' It is hoped that learning the rhymes will help build the children's confidence with speaking and reading. They are being sponsored for every nursery rhyme they can recite and the money raised is helping to buy some new toys for our outdoor area. The teachers have been taught a few new rhymes too!

Year 5/6 Warriner Partnership Indoor Athletics Event

The school would like to send their huge congratulations to the team of children who represented the school in the Warriner Partnership Indoor Athletics Event on Friday 11th February, where they came a brilliant second place.

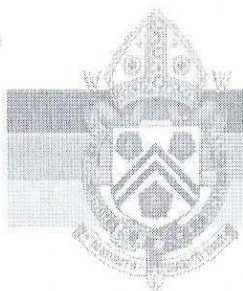
The team was made up of both boys and girls from years 5 and 6 who each took part in several events including sprint, relay, mixed relay, standing long jump, seated throw and speed bounce.

After each event the times and scores were put into the computer and totalled to give an overall score that was only four points away from the eventual winners. Mrs Worrell said "They were a pleasure to take and it was fantastic to see how much the children supported each other in all the events."

Damian and Debbie

Welcome you to enjoy the atmosphere
of our 16th century thatched Inn.

- Bar and a la carte menus
available lunch & dinner.
- Excellent Sunday lunch-
to suit the weather!
- New food and wine takeaway
menu.
- Wednesday steak and wine
night £15.00
- Selection of fine wines and real
cask ales.
- Happy hour and a half every
Wednesday evening!
- Gift vouchers available.



THE
WYKHAM
ARMS

SIBFORD GOWER

Temple Mill Road
Sibford Gower
Nr. Banbury
OX15 5RX

Tel: 01295 788808 / 07

Take a look at our new
website
www.wykehamarms.co.uk

email.
info@wykehamarms.co.uk

Opening Times
12.00am-3.00pm
6.00pm-11.30pm

Bar only Sunday Night
Closed all day Monday
(Except bank holidays)

Hello from Thailand

We arrived back in Thailand on the 11th we had to be back home for the 13th as Ben's Nephew was to become a Monk for Ten day's so we had to be there to join in with the activities. first thing on the Friday we had to take part in cutting their hair off, when that was all done and they were clean shaven heads they went back to their homes for lunch then we paraded around the streets with them. In the evening we had a party and on Saturday morning they then went to the Temple we were there for about 3 hours.

On Sunday it was Teachers Day, as we teach English voluntarily at the primary school, we had to be there for 8.00am as the Monks came to pray for the Teachers. Some of them were presented with certificates for exams they had passed, then during the rest of the day, they played sports, in the evening we went back for the party. That was great as they put on entertainment. Some of the Teachers did a play which was very funny.

We are both keeping well and you should get another letter before we get back in June.

From Robin & Ann

**The Editors email address is changing
Please send future contributions to
adrian.lamb1@btconnect.com**

Cotswold Sketchbook

original oil paintings

Oil paintings produced every working day
for sale online at:

www.cotswoldsketchbook.co.uk

visit the ARCHIVE pages to see what's
sold and what's still available

Best Wishes for 2011

It seems impossible that over a year has passed since we left Sibford Stores and Post Office, strange how as a child you never believed your elders that time goes quicker the older you get!

Unfortunately the snow arrived before Christmas so we didn't manage to see as many people as we had hoped but would like to take this opportunity to say thank you for the numerous Christmas cards and messages we received over the festive season. They brought warm feelings that we hadn't been forgotten by the village at a time when temperatures were below freezing!

We still haven't managed our trip to tour Scotland but are still planning the trip, hopefully during this year,

We wish everyone a happy
and prosperous 2011

Terry and Judith Byrne
Adderbury

REIKI
HEALING FOR HUMANS
AND ANIMALS

LYN SIMMS
MASTER PRACTITIONER

01295 780 655

Serenity at Sibford

Gautherns Barn, Sibford Gower, OX15 5RY

01295 788463

***Guinot Facials * Massage *OPI Manicures & Pedicures * Waxing & Electrolysis * Thread Vein Removal**

*** Skin Tag Removal * Milia/Age Spots/Sebaceous Cysts treatments
* Reiki * Eyelash Tinting**

*** Sports & Remedial Massage * Pilates Studio * Monthly Botox & Skin Regeneration clinic**

*** Pamper Packages & Pamper Days**

**Open Monday, Wednesday, Friday 9.30-5, Tuesday and Thursday
are exclusive pamper days,**

Saturday 9.30-2 (later appointments are available with prior notice)

www.serenityatsibford.com

Introduction to Beekeeping

Shipston Beekeepers are holding an "Introduction to Beekeeping" day on Saturday 2nd April at the Old Free School, Brailes. The day will deal with the basics of beekeeping for the complete beginner or those with very limited experience of this craft.

Arrive at 09.30 for coffee prior to a prompt 10.00 start, Refreshments and a light lunch are included in the day's price of £20. The event is scheduled to finish at 15.00 approx.

Contact Douglas Nethercleft on 01295 680041 or djn0001@aol.com to book your place. Numbers are limited.

MEN's BREAKFAST CLUB

As an experiment, we are trying to organise a Men's Breakfast Club, to meet at Wyatts' Farm Shop at 9.00 on the first Tuesday of the month. The occasion will be totally informal, and all are welcome to attend. Everyone can order their own food at the counter and pay for themselves. **The first gathering will be on Tuesday 1st March.**

If you propose going, please contact Martin Thomas so that we can give Wyatts a rough idea of numbers.

E-Mail: MDThomas@Care4Free.net Phone or Text: 07833-908004



CARPENTRY • PLUMBING **ELECTRICS • HOUSEHOLD REPAIRS**

**No need to call in four
different contractors ...*Call me!***

For your building, DIY and home improvement needs
KITCHEN & BATHROOM FITTING • HEATING INSTALLATION
CARPENTRY • PLUMBING • ELECTRICS • SECURITY ... and more

DIY? Don't do it yourself ...*Call me!*

For a comprehensive and reliable local service,

Call HUGO SEELY on 01295 780355

FREE NO-OBLIGATION ESTIMATES

Trading in the Sibfords since 1992 - Excellent local references available

Dear Sirs,

I am contacting you with regard to a new service Age UK Oxfordshire is piloting in Banbury and surrounding villages,

"My Life, My Way, Home Support".

The service offers general home support for older people who may require some help in day-to-day life. Our staff will assist with the following:- Domestic tasks, Shopping, Access to social activities, Transport to health appointments, Light gardening, Pet walking, Going for short walks, Writing letters, etc.

The cost of the service is £15.00 per hour (plus any additional expenses where applicable).

I would be extremely grateful if you are able to assist in spreading the word about the service, as we are now taking on referrals.

May I thank you for any help you may be able to offer, in assisting us to help improved the lives of older people in Oxfordshire.

Contact Tina Turvey - Home Support
Manager 01295 278040

BIKE REPAIRS & SERVICING



General servicing
Repairs
Cleaning & maintenance
All makes and types of bike
Reasonable rates, speedy service

For all your bike repair needs, call: 01295 780355

The English Furniture Workshop

Beautiful Hand Painted
Antique Furniture

Amanda Ransom, Sibford Gower

Tel: 01295 780799 M: 07932 613663

**www.englishfurniture
workshop.co.uk**

Bed & Breakfast

AGDON FARM

Nr Brailes

**Comfortable rooms
in old stone farmhouse**

**Tel: Maggie Cripps
01608 685226**

BUILDING PLANS BUILDING REGS. SUBMISSIONS

Extensions • Loft conversions
Listed Buildings work • New build

D.R. BOVILL, B.A.

DESIGN AND PLANNING CONSULTANT

Private and Trade enquiries welcome
01295 788922 davidbovill@btinternet.com

WELCOME TO SIBFORD

If you are a new resident of Sibford and have not yet received a copy of the "Welcome to Sibford" booklet, please telephone Ivor Hopkyns on 788367 (Gower or Burdrop) or Ann Bishop on 788188 (Ferris), and a copy will be delivered to you. The information will help to make you feel at home - by acquainting you with the services, schools, clubs and societies that are currently active in the villages.

We welcome Clive and Jan Warren who have recently moved to Sibford Gower, "downsizing" from a larger house in Bloxham. Both retired, they have an interest in local history; Jan is a joint curator of Bloxham museum. One daughter, who lives in Sydney, Australia, is visited periodically while the other 3 (adult) children live in the UK.

Miss 'T' Catering.

Catering for events such as:

**Anniversaries, Weddings,
Christenings, Birthday parties,
Funerals**

And private dinner parties.

~.~.~

Also available

Cutlery and Crockery Hire.

Contact Victoria Taylor on:

Mob: 07841 910037

Home: 01295 788924

O
p
u
s

Alan Berks

SPECIALIST INSTALLER

Kitchens and Bathrooms

Natural and handmade

floor and wall tiles

Solid wood flooring

01295 780652

07816 592 124

Alan.berks@btopenworld.com

The Spinney

Sibford Gower, Banbury, Oxon, OX15

Oxon Computers

Qualified PC Engineer

Danny, Company Owner

**PC repair, maintenance & configura-
tion**

Tel: 01295 788766 Mobile: 07767 025752

Fax: 01295 788766

Email: Admin@oxoncomputers.co.uk



QUALITY FISH DIRECT

FROM

Proprietor: T.P.Martin

Tel: 07812 361853

GRIMSBY MARKET

**Best fresh fish and shell fish to your
area direct from Grimsby on the
Lincolnshire coast**

I'll be at Sibford Village Hall car park

EVERY MONDAY from

approximately 4pm till 5.30pm

Fashion Extravaganza is back!

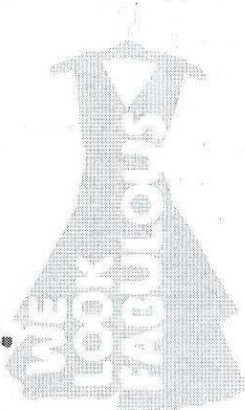
Oxford Town Hall

18 & 19 March 2011

We are holding another nearly new and end of season fashion sale and are collecting good quality clothes and accessories so please look in your wardrobes and kindly give Macmillan your donations

To arrange drop-off or collection contact Michelle Boycott 780001

**WE ARE
MACMILLAN.
CANCER SUPPORT**



Bed and Breakfast wanted
10th June 2011 for 2 people
attending wedding.
walking distance of
The Colony preferred.
Please contact Sue Lovatt
01295 788848

Holiday Let
For 1 or 2 people
In quiet, self-contained
annexe
Contact Judy Abbott
01295 780731

Pilates
Relax, Re-condition and
Re-energise
Small Group Intensive Courses
Individual Sessions
by appointment with
Madeleine Wilson B.SC., M.SC
Master Mat &
Studio Instructor
Personal Trainer
07905 953 300 or
01295 780 279
email
mw1@linuxwaves.com

FRANCIS MORDAUNT MCFHP MAFHP

*Member of the Open College of Foot Health Professionals
Member of the British Association of Foot Health Professionals*

FOOT HEALTH PROFESSIONAL

To enquire about a home visit please

telephone: 01295 730615

Professional Foot Care in Your Own Home

**Richard Wallington
Builder**

Block Paver Drives a Speciality
Also Extensions, Patios
Fencing etc.

High Quality Work, Free Estimates

01295 780705 07743 932545

(Sibford Gower) (Mobile)

Village Hall News

Village Hall Lottery Game. We are still looking for more players to start this game again. Please ring Muriel on 780025 - the more who participate the more you may win! Only £12 for the year - half goes towards Village Hall funds, half back in prize money.

Village Hall Family Quiz on Saturday March 5th starting at 4 pm, pizzas served at 5pm. £1.50 adults, £1 children, teams of up to 8. New style questions and fun for all ages. Licensed Bar and Prizes. Entries to Muriel 780025, Joan 780410, Anita 788577.

Easter Egg Hunt at the Village Hall on Good Friday 22nd April

If any regular hirers of the Hall have taken home tea towels to wash could they please return them.



*Sarah Walker
Vivienne Nott*

*fresh flowers, fresh ideas
Gorgeous bouquets & arrangements
Wedding bouquets, churches,
marquees and receptions
Flowers for supper parties,
house parties and celebrations
Funerals and memorials*



*Contact :
Sarah :01295 788595 Viv:01608 652819*

**GODSWELL NATURAL
THERAPY CENTRE**

*Godswell Lodge, Church Street, Blaxham
Banbury, Oxon OX15 4ES*

**Acupuncture, Alexander Technique,
Aromatherapy, Art Therapy,
Chiropody, Chiropractic,
Counselling & Psychotherapy,
Cranio-sacral therapy, Homoeopathy,
NLP, Nutrition, Physiotherapy,
Reflexology, Remedial Massage,
Reiki, Spiritual Healing,
Shiatsu, Yoga.**



**Fully qualified professional therapists
For information Ring 01295 720347**



**FARMHOUSE
BED AND BREAKFAST
GRANGE FARM, SWAL-
CLIFFE**

*Enjoy warm hospitality & peaceful
surroundings in our comfortable
18th C Farmhouse*

CONTACT BARBARA TAYLOR



Contributions for the
April
Sibford Scene
to the Shop or Editor by
March 22nd

Holy Trinity Church News

It is clearly time that your correspondent was replaced. He has been writing this article for a good many years and is now making mistakes. Volunteers for his replacement are called for. The latest blunder, or there were two, were that the concert series showed an incorrect date for the third in the series. This will be at The Court House, Sibford Gower on Friday July 22nd at 7.30pm and not as shown. Then a vital piece of information was omitted for the second concert which will be in Holy Trinity Church at 3.00pm on Sunday 8th May followed by a cream tea. The fact that this will be in aid jointly of Swalcliffe Church Tower Fund and Holy Trinity was not mentioned. Although the ongoing needs of our church are serious, we nevertheless thought that the problems of Swalcliffe Church, our neighbour and fellow Benefice member are also serious and in need of brotherly love.

The series of concerts previously announced have received favourable comment and place for the first on Friday March 4th at 7.30pm are going fast. There are places left though but people anxious to come should not delay with their applications to Norman Nash, The Vine House (780380 or email nnash@waitrose.com). On Sunday May 8th at 3.00pm we would really like to fill the church and make maximum use of our new pew cushions so do please apply for tickets and bring others with you. If the day is warm enough we may have the cream tea afterwards out of doors, otherwise it will take place in the Village Hall, Sibford Gower. Price for this event £10 to include tea. (children half price). Although the final concert on Friday 22nd July is some way away, places are also going fast and as space is limited applications should be made sooner rather than later. This is, as with the first, jointly in aid of Katharine House Hospice and Church funds.

A joint meeting of the PCC and the Finance Working Group was held in the Church on 14th February 2011 Mr Robin Brunner-Ellis, Diocesan Christian Stewardship Adviser was present, also Rev John Tattersall. Recommendations as to future action will be placed before the next PCC meeting which is being held on 23rd February 2011.

9th March 2011 Ash Wednesday and start of lent, Benefice Eucharist at Epwell at 8.00pm. Lent discussion groups Tuesdays at The Gables, Upper Tadmorton (Salethornes), Thursdays at 32 Danvers Close, Broughton (Howarths) both at 10.30am. Lent Austerity Charity lunches every Monday, except that in Sibford which will be on Thursday March 24th at the house of David and Gil Soden at Wyatts Close, Main Street, Sibford Gower and 12.30pm.

Church Services

Society of Friends		Sunday at 10.30 am
Methodist		Sunday at 11.00 am
Roman Catholic Mass	Wroxton	Sunday at 9.00 am
	Brailes	Sunday at 11.30 am
Baptist	Hook Norton	Sunday at 10.30 am

Church of England, Holy Trinity, Sibford Gower, as below.

March

Sunday 6th Benefice Service at Swalcliffe

Wednesday 9th Ash Wednesday Benefice Eucharist at Epwell 8.00pm

Sunday 13th Holy Communion 8.00am

And Family Service at 10.00 am

Sunday 20th Holy Communion 9.30am

Sunday 27th Holy Communion 9.30am (BCP)



RED HORSE VALE LTD

All Types of Fuel, Coal, Smokeless, Gas,
 Logs, Kindling, Barbecue Needs
 Central Heating Oil, Oil Tanks & Coal Bunkers
 Landscape & Building Materials, Garden Centre &
 Garden Supplies. Farm & Country Sundries
 Equestrian Products, Horse & Pet Feeds
 Open: Monday - Saturday 8am - 5pm
 Windmill Farm, Banbury Road (A422),
 Oxhill, Warwickshire CV35 ORP
 Tel: 01926642832
 Fax: 01926 642 853

slight adjustments

the woman's touch

Lighting
Flooring



Curtains
Blinds



Colour
Consultation



Artwork
Gilding



Painting &
Decorating



We can help you create the perfect home and living space by making the most of what you already have - tailoring everything to your budget whether you want a 'makeover' to maximise a house sale, to decorate a room or you simply require a pair of curtains.

Painted
Furniture
& Kitchens



Accessories
Mirrors



Garden &
Carpentry



Upholstery
& Soft
Furnishings



Free consultation and estimate for any size job
 Contact Rachel: 07913 546 867
www.rachelberger.co.uk

Sibford Bus Services

Cherwell Rural Dial-A-Ride Scheme

A mini bus with tail-lift to take **elderly or disabled people** and escort to Banbury (max fare £1.60) Door-to-Door service. Book at least one day in advance. Operates on Wednesdays & Thursdays. Phone 263777 for details. BCTA also takes bookings for groups of 8 or more on a weekly/monthly basis (Wednesdays & Thursdays) to and from Banbury. Tel; 263777

Stagecoach – Timetable commencing 31st May 2009

Mondays to Saturdays (No services on Sundays or Public Holidays)

Bus 50A. From Banbury towards Stratford-upon-Avon

Banbury, Bus Station	08.30	10.55	12.45	14.26	16.05	17.10	18.10
Sibford Ferris, Cross Roads	08.52	11.17	13.07	14.48	16.27	17.32	18.32
Sibford Gower, School	08.55	11.20	13.10	14.51	16.30	17.35	18.35
Shipston,	09.15	11.40	13.35	15.11	16.50	17.55	18.55
Stratford on Avon, Wood St.	09.40	12.09	14.04	15.40	17.19	18.24	19.24

Bus 50A. From Stratford-upon-Avon towards Banbury

NS

Stratford on Avon, Wood St	06.20	07.10	09.05	11.10	13.10	15.10	16.24
Sibford Gower, School	07.04	07.55	09.56	11.56	13.56	15/56	17.14
Sibford Ferris, Cross Roads	07.07	07.58	09.59	11.59	13.59	15.59	17.17
Banbury, Bus Station	07.28	08.25	10.21	12.21	14.21	16.21	17.39

NS = Not Saturdays

All buses will operate low floor wheelchair accessible vehicles.

For complete details of all the stops that are served by service 50A, timetables are obtainable from bus drivers and Sibford Stores & Post Office.

Fares:-

Sibford Ferris & Sibford Gower to Banbury: Single £2.30 (Child£1.15)

Return £4.40 (Child £2.20)

Sibford Ferris & Sibford Gower to Stratford: Single £4.00 (Child £2.65)

Return £6.00 (Child £4.00)

Seven days unlimited travel £20.00

Twenty eight days unlimited travel £76.00

Calendar of Events

March

- Tue 1st Mens Breakfast Club 9.00am at Wyatts p16
Tue 1st Friendship Club Big Birthday Party. P4
Wed 2nd and every Wednesday Adults Only Swim 8.30 - 9.30am Sibford School
Wed 2nd Mobile Library in the Sibfords (2.40 - 4.10pm)
Wed 2nd Community Reading Group 6.30pm Sibfpor School p9
Fri 4th Concert at The Manor, Sibford Gower 7.30pm p21
Sat 5th Village Hall Family Quiz 4pm p20
Sat 5th Banbury Young Musician of the Year Final at Sibford School p9
Mon 7th Ferris Parish Council meeting 7.45pm above Sports Hall, Sibford School
Monday evenings Life Drawing Classes at Sibford School p9
Tue 8th W.I. Portraits of Queen Elizabeth I p6
Wed 9th Horticultural Society Tulips wild and cultivated. V H 8pm p10
Fri 11th Sibford School Open Morning p9
Sat 12th Sibford Ferris Litterblitz 10.00am p5
Tue 15th Friendship Club Trip to Webbs of Wychbold. P4
Wed 16th Mobile Library in the Sibfords (2.40 - 4.10pm)
Thu 17th Sibfords Society AGM, Parish Plan update and Archives p11
Fri 18th & Sat 19th Fashion Extravaganza p19
Sat 19th Community Plan Open Day at the Village Hall
Thu 24th Lent Austerity Lunch at Wyatts Close SG. 12.30 p21
Thu 24th Gower Parish Council Meeting 8pm Primary School.
Sat 26 & Sun 27th Art Exhibition at the Primary School 10.30am - 4.30pm p3
Wed 30th Mobile Library in the Sibfords (2.40 - 4.10pm)
Wed 30th Community Reading Group 6.30pm Sibfpor School p9

April (part)

- Sat 2nd Introduction to Beekeeping Course p16
Wed 13th Mobile Library in the Sibfords (2.40 - 4.10pm)
Fri 22nd Easter Egg Hunt at the Village Hall p20
Wed 27th Mobile Library in the Sibfords (2.40 - 4.10pm)

Cover picture. Bonds End Lane, Sibford Gower

Sibford Scene

Editor; Adrian Lamb. Grounds Farm, Sibford Ferris. 780380

NEW ADDRESS e-mail adrian.lamb1@btconnect.com

Treasurer; Timothy Wimbush, The Rectory, Acre Ditch, S.Gower 780555

Advertising; Ivor Hopkyns, Elmridge Farmhouse, Sibford Gower,

Banbury, Oxon. OX15 5RT. Tel 788367

e-mail sallyandivorhopkyns@hotmail.com