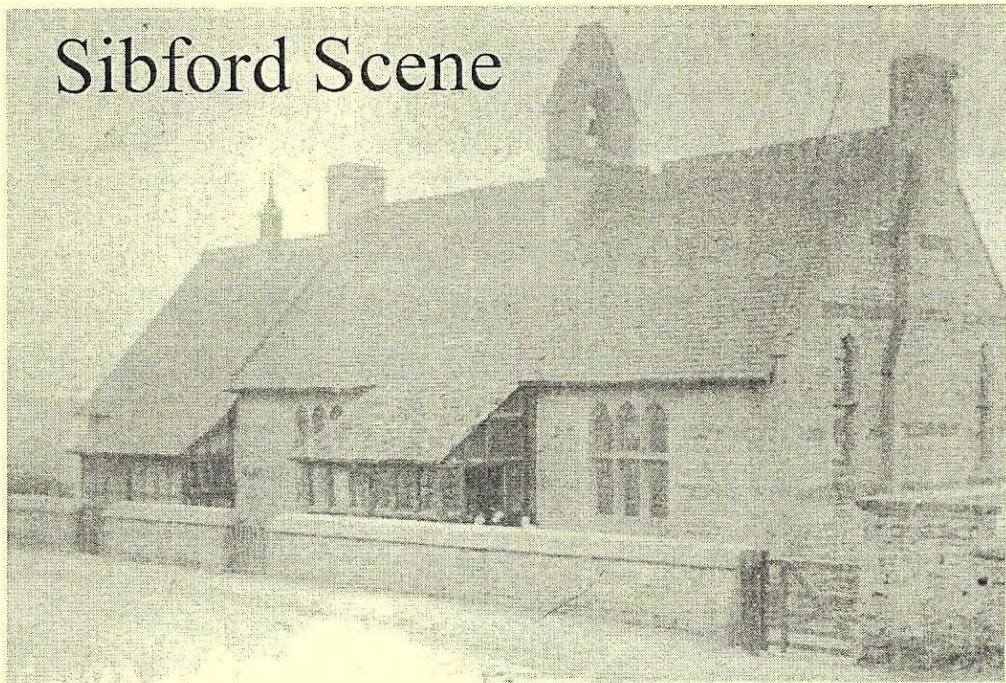


Sibford Scene



April 2010

No. 320

Good Friday Children's Activity Morning

At the Primary School 2nd April 9.30 - 12 noon

Easter Egg Hunt at the Village Hall

Friday 2nd April starting at 2.30pm

Cherwell Development Plan Public Meeting

Tuesday 6th April. 7.30pm in the Primary School Hall

Church Coffee Morning

Saturday 10th April 10 - 12 in the Church

Village Litterblitz

Saturday 17th April 10am at the Village Hall for the Gower
Lanes End Corner for the Ferris

Nature Notes

Feb 19th. A cock and four hen pheasants looked very ornamental against the snow that fell overnight. The hens are normally quite difficult to spot against the background of dead leaves in our bit of woodland.

Feb 21st. While we were at Grounds Farm a sparrow hawk suddenly appeared on the lawn with wings spread out obscuring the bird it had caught. However it must have lost its grip on the bird as it took off, or the bird got away and the sparrow hawk took off after it, but either way it got another chance of survival.

Mar 2nd. After a sharp morning frost this beautiful day brought a comma butterfly out of hibernation. It was sunning itself near the Friends School pond. The cold winter has held back the spring flowers and I could only see two primrose flowers as a possible source of nectar for it.

Mar 8th. The temperature was 17F (-8C) at 8 am which is the coldest morning since the middle of January but the rooks are still busy snapping off twigs for their nests.

Mar 13th. A female blackcap visited our bird table this morning. I wondered how well blackcaps would survive a hard winter as they only started wintering here comparatively recently, but this one seemed to be lively and well having made good use of the bird table food. I am told that the ones that now winter here nest further north and the ones that nest here winter further south. A bit like musical chairs.



HOLMBY HOUSE

SIBFORD FERRIS

A stunning setting for
special celebrations

From Buffets to Gourmet Dinners

Formal dining for large groups
Garden parties Business meetings
Luxurious B & B
Self-catering accommodation

Tel/Fax: 01295 780104

www.holmbyhouse.com

Sally.wass@btinternet.com

THE VILLAGE SHOP HOOK NORTON

NATIONAL LOTTERY

Grocery - Greengrocery - Bakery
Wines - Spirits - Confectionary
Newspapers - Magazines - Cards
Video Rental - Bottled Gas
Open Monday to Friday

7 am to 8 pm

Saturday 8 am to 8 pm

Sunday 8 am to 6 pm

Telephone: 01608 737245

Mar 15th. A red kite was seen to the south east of the village today. A rabbit with myxamatosis which could end up as red kite or more likely buzzard food was seen in the same area.

Mar 18th. I wondered whether we were going to get any frogspawn in our garden pond this year but a few bits have appeared today. Bill Crabtree is still wanting some frogspawn to try and re-establish frogs in Field Barn Pond. He can be contacted on 780635.



Sibford Horticultural Society

At a very well attended first meeting of the year, the Horticultural Society we heard Sue Byrne talk about Batsford Arboretum. She showed lovely slides of spring and early summer colour, from early bulbs to huge trees and magnolias. A great evening and as long as this sunny weather holds, we will enjoy those sights soon.

The next meeting is on Wednesday 14th April at 8pm in the Village Hall when Deborah Page will give us fresh ideas for tubs and hanging baskets. All are welcome. Don't forget the Plant Sale on the 15th May at Buttslade House.



**FOLLY FARM
BACK PAIN
CLINIC**

ACHES & PAINS?

I can help you!

**Just visit your local clinic
between Sibford & Swalcliffe**

Contact: **John McArthur**
Back Pain Therapist
B.Sc. & Dip (Chiropractic)

Tel: 0845 862 4 862
(Local rate)

Mob: 07740 404 678

Ann Woolgrove
FABRICS, CURTAINS & SOFT FURNISHINGS

Personalised design service and consultancy in
your own home.

Beautiful bespoke Curtains, Roman & Roller
Blinds & Soft Furnishings, handmade to the
highest standard.

Advice on every kind of Fabric from numerous
suppliers.

Stylish complimentary Cushions & Loose
Covers.

Re-upholstery service.

Custom made Bedspreads & Headboards.

New Sofas & Chairs

Tel/Fax: 01295 788145
Email: info@annwoolgrove.com
www.annwoolgrove.com

WHATEVER THE WEATHER!

An evening of fun and light entertainment.

SWALCLIFFE CHURCH – SUNDAY 11TH APRIL 2010 7pm

In aid of Swalcliffe Church Tower Appeal

Several fine actors, all of whom live in Swalcliffe and the surrounding villages have generously offered their services in aid of the Swalcliffe Church Tower Appeal at Swalcliffe Church on Sunday 11th April.

Drinks will be from 7.00pm. with the performance starting at 7.30pm.

Gillian Bevan, Jane Booker, Lynn Farleigh and John Woodvine, all well-known for their work with the RSC in Stratford-on-Avon and London, and in numerous TV series and films will be joined by **Ben Lamb** and **Pippa Bennett-Warner**, two future young stars currently studying at RADA. They will take part in *Whatever the Weather* a delightful selection of words and music devised by Roger Pringle, former director of the Stratford-on-Avon Poetry Festival and directed by Lynn Farleigh.

You are urged to look forward to the Spring and mark Sunday 11th April in your diaries. We are looking forward to seeing you – Whatever the Weather!

"When two Englishmen meet their first talk is of the weather"

Tickets £12 (to include a welcome drink and canapés) are available from:

Gay Harris 01295 788427 Email: gay.harris@virgin.net

Sibford Stores & Post Office

Sibford Ferris

OX15 5RG

Telephone 01295 788317 / 788348

YOUR LOCAL CONVENIENCE STORE AND NEWSAGENT

We deliver newspapers and magazines 7 days a week to all the surrounding area. Place your regular order today, whether for 1 day a week or 7. Always a wide selection of magazines available, specialist titles available to order.

Chilled & Frozen foods, groceries, cigarettes, beers, wines and spirits, fresh fruit and vegetables, pet foods, household goods, toiletries & medical requisites and lots, lots more.....

National Lottery, Photocopying, fax service, dry cleaning

We will also undertake your mailings for you, just ask.

Always an excellent selection of Hook Norton bottled beers in stock.

Telephone your grocery order for free local delivery.

OPENING HOURS

Monday to Saturday 5.00am to 6.00pm

Sunday 5.00am to 1.00pm

PLEASE SUPPORT YOUR LOCAL POST OFFICE, THERE ARE LOTS OF PRODUCTS AND SERVICES AVAILABLE ON YOUR DOORSTEP



Sibford WI. Meeting - Tuesday, 9th March 2010

Glennis Hardman (President), wearing the new WI logo badge, welcomed members. The more modern logo reflects how the WI. is forward thinking and not afraid to move with the times. She was pleased to announce that she and Jane Martin has each had a photograph selected to be included in the Oxfordshire Federation 2011 calendar. Jane Martin, Programme Secretary, gave details of the speakers that she has arranged for 2010/2011 period. Outings Secretary, Margaret Gardiner, revealed that our annual coach trip on August 10th will be to The Wyne, Basingstoke, Hampshire.

After bringing the general meeting to an end, the President introduced the poet Patricia Huth Ellis. Patricia was to present "A Performance of Poetry and Music" with support from her husband Geoffrey – a retired History Professor from Oxford. He plays classical guitar and would be providing four interludes between readings by Patricia of ten of her poems. Patricia's inspiration for the first of these, entitled "Farm Portrait, 1880", was a Van Gogh painting and her words and reading vividly described the sadness, misery and exhaustion of a woman eking out a living by potato picking in the 19th century. The topics she chose for her work were wide-ranging – family ties, life in the trenches, secret dreams, friendship. The balance of her presentation, together with Geoffrey's contributions of standards such as Blowin' in the Wind, Morning Has Broken, Greensleeves and Scarborough Fair, was just about right. It finished with all (?) of us joining in a rendition of "Raindrops Are Falling On My Head"! As one member remarked "I really enjoyed that – they can come back again at any time".

Tea and a selection of delicious home baked cakes were served by Sue Court and Ann Benham. Our entertainers judged the competition for Old Sheet Music and chose 1st Rosemary Neal, 2nd Glennis Hardman and 3rd Margaret Thomlinson.

Tuesday, 13th April will be the AGM. There will be a Bring & Buy Stall instead of a raffle. No competition.

Margaret Gardiner

LOCAL HONEY

USUALLY AVAILABLE

Bill Wealsby

Tel:01295 788405

Swarms of bees wanted

A. Sabin

LOGS

Millbarn, Hook Norton

Telephone 01295 788421

Mobile 0781 7709044



The Society held its 17th AGM and the chairman presented a report on the work of the Society during the year. Following the successful application to ‘Awards for All’ the new equipment had been purchased and installed and was being used to digitise data and photographs from the archive material. The

Financial Statement was adopted and a presentation was made to the retiring Chairman, Maureen Hicks. She was thanked for her contribution to the Society during her 13 years as chairman of the committee. She wished the Society every success in the future under the new chairman, Bryan Mills.

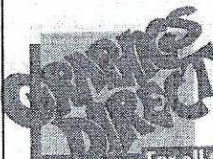
One of the Society’s members, Richard Hartree will be the speaker at the April meeting on Thursday 15th April at 8pm in the Village Hall. He will be talking about Alcan – the aluminium manufacturing company in Banbury from 1929 to 2009 when it was closed. Once a bus service was introduced to the Sibfords many agricultural workers went to work for Alcan and benefited from better working conditions and higher wages.

‘DOMESDAY 2010’

Your Individual Householder’s Survey is enclosed

Following the AGM members of the steering committee gave a presentation to villagers to explain the comparative nature of the survey we are carrying out during the year. The Groups and Organisations survey is well under way and many have already completed and returned their forms. It is hoped that this will provide a comprehensive look at all the activities taking part in the villages in 2010.

The Householder’s Survey was introduced and the complete anonymity of the form was explained. This form is being delivered to every household this month via the Sibford Scene and will provide the core data for the survey of life in the villages.



The Firs, Hook Norton, Banbury, OX15 5DD
 Email: enquiries@graphics-direct.co.uk
 Phone: 01608 730555 Fax: 01608 730271

For all types of Vinyl Graphics & Signage.

Theresa Harper
 DESIGNING PRODUCING & FITTING

Please take a few minutes to complete your form and return it to the Shop, the Primary School or the Surgery.

The success of our project depends entirely upon the

support of everyone in the villages – please help us to make a written record of life in the Sibfords for those who will live and work here in the future. We plan to include a photographic record of everyday life today, so we would be pleased to receive digital pictures on CD, memory stick or SD card so that we can capture the normal activities both in and out of doors. Please contact Dr Martin Thomas (788908 or email: mdthomas@care4free.net) if you can help in this way.

An exciting new website is in the final stages of development and this will be used to keep everyone informed about the progress of our Domesday Project and other Sibford village matters during the year.

Frog Notice

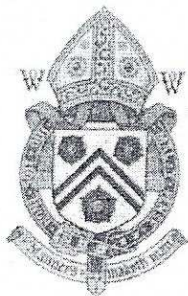
At this time of year, I seek the co-operation of motorists and pedestrians to look out for frogs on the road and to do their best not to squash them as they make their way to Sibford Gower Village Pond to mate. Frog numbers have dramatically declined over the past few years and last March I noted only four frogs in the pond. In the Sibford Gower area, garden ponds were also lacking in frog numbers. It will be interesting to see if there is any change this Spring and I should welcome reports from garden pond owners.

Glennis Hardman (Tel: 780391)

DAMIAN AND DEBBIE WELCOME YOU TO THE WYKHAM ARMS

Temple Mill Road, Sibford Gower, Nr. Banbury OX15 5RX
Tel: 01295 788808

Quiz Night
on First Sunday of the Month
'Hooky Night' Wednesday
evening 6.00 - 7.30 pm
(Beer, Lager, House Wine)
Wi-Fi Hotspot Service
Bar only Sunday Night, Closed
All Day Monday



Fantastic Family Sunday
Lunch
(Booking advised)
Freshly prepared
local produce.
Opening Times
11.00 am - 3.00 pm
6.00 pm - 11.30 pm

www.wyksamarms.co.uk

email: info@wyksamarms.co.uk

Village Hall News

The next event at the Village hall is an **EASTER EGG HUNT** on Good Friday 2nd April 2010. Come to the Village Hall for 2-30pm start .Entry £1 only. There is a short route for the little ones, and a longer more adventurous route for primary school age children. Chocolate prizes for all young finishers! Tea/coffee/squash/biscuits available when you get back to the hall. Parental supervision required for the young ones. Contact Joan on 01295 780410, or Muriel on 01295 780025.

The **VILLAGE FAYRE** and **DOG SHOW** will be held on June 19th. There will be jousting, bouncy castle and slide, sumo wrestling, games and refreshments and bar. More details to come in the future Sibford Scenes.

We will host the **DAMM RIGHT I GOT THE BLUES** band on July 3rd, playing their loud mix of rock, soul ,blues and in fact just about anything! We plan a **QUIZ NIGHT** in November, and the **FILM NIGHTS** will recommence from September.

What else would you like to see at your Village hall? outdoor jazz? country and folk? tea dancing/ bingo? jumble/nearly new sales?coffee shop?disco? Please let us know so that we can plan. Contact Joan with your ideas, or Ginny with queries about the fayre.

Village lottery Winners. Our latest lucky winners are Kay Healey £43, M Bristow £21, Mrs Seeley £12, Congratulations!

WOODSIDE GARDEN MAINTENANCE

Border Maintenance

Grass Cutting

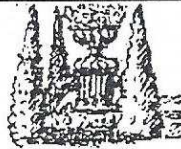
Hedge Cutting

All Your Garden Needs Etc

BTEC and NCH Qualified

Call Matt Simms

07976 644 509 or 01295 780 655



BED & BREAKFAST

Buttslade House Cottage (Sibford Gower)
offers comfortable accomodation with
en suite bathroom overlooking a tranquil
English country garden.

Contact Diana Thompson

(01295) 788818

or janthompson50@hotmail.com

www.buttsladehouse.co.uk

Sibford Gower & Sibford Ferris Parish Council Elections

The Parish of Sibford Gower (which includes Burdrop) and Sibford Ferris, have to elect FIVE Councillors each this coming May to serve on the Parish Councils for the next FOUR years and the official notice will be displayed on the Parish Council notice boards and the Village Hall notice board from 29th March 2010.

Nomination papers may be obtained from the Returning Officer, Bodicote House, Bodicote, Banbury OX15 4AA (Tel: 01295 221601) Monday to Friday 10am to 4pm (excluding bank holidays), who will at the request of any elector for the Parish prepare a nomination paper for signature. Alternatively, nomination papers can be obtained from the Parish Clerks who will be pleased to provide any information that may be required.

Completed nomination papers must be delivered to the Returning Officer, Bodicote House, Bodicote, Banbury OX15 4AA, Monday to Friday 10am to 4pm after 29th March 2010 (excluding bank holidays) but not later than **NOON** on **THURSDAY 8th APRIL 2010**.

Carolyn Heather
Clerk, Sibford Ferris PC
(Tel: 780695)

Peter Hardman
Clerk, Sibford Gower PC
(Tel: 780391)

Sports & Remedial

Massage

Aid sore, aching
muscles and
injuries

Victoria Smith

ITEC DIP SPORTS MASSAGE, VCTC, MIGHT
01295 780610
07974 231571

Micks Sticks

Fire Lighting Wood For Sale
£2.50 per big bag
Call in anytime and ask for
Mick Canning, at
The Old Malt House,
Sibford Ferris
Tel: 01295 780321

C.A. Berger

painting & decorating
interiors & exteriors
residential & commercial

Mobile: 07875 212 315
Office Tel: 01295 780 140

Half Loads

Full Loads

LOGS

Very Competitive Prices
Seasoned Hardwood Logs
Basil Page 01295 780215
Fencing Jobs Big or Small

Sibford Gower and Sibford Ferris Parish Councils
LITTERBLITZ
Saturday, 17th April 2010

The Annual Litterblitz will take place on Saturday, 17th April 2010 and volunteers are sought to give an hour or so of their time to help with the work of clearing litter from where it may have gathered in Burdrop, and Sibford Gower. We will meet at Sibford Village Hall at 10am when Peter Abbott will allocate the areas which require attention.

In Sibford Ferris, please meet at Lanes End Corner (cross roads outside the Manor) at 10am and we will work from there.

The Members of both Parish Councils hope that the occasion will once again receive the usual enthusiastic support and look forward to seeing you on the 17th April.

The Firs Garage

All makes vehicle servicing

Competitive prices
Factory trained mechanics
MOT Parts Bodyshop Fuel
Large site with easy parking



Extensive range of new and used vehicles

Hook Norton, Oxon. OX15 5DD (1 mile North of Hook Norton village)

Tel: 01608 737349 / 737641 www.firs-garage.com

Family Business Established 1960

Sibford Artists Unite!

Spring moving into summer brings Oxfordshire Artweeks, the county-wide celebration of the work of Oxfordshire artists and craftspeople, with studios open to visitors, and highly desirable art and craft on sale. Nigel Fletcher, renowned for his paintings of Cotswold scenes, has long been an Artweeks stalwart, with a large exhibition every year in Sibford Ferris; and the rural watercolourist Ronny Loxton has for several years exhibited in the magnificent surroundings of Swalcliffe Barn. From time to time other artists have also taken part. But this year there's a huge explosion of creativity in the two Sibfords and Swalcliffe. Nigel and Ronny are there, of course, but are joined by five artists exhibiting together at Sibford School, Sibford Ferris in a mixed media exhibition which includes paintings, prints, sculpture, felt and hand woven rugs; the school will also be showing its own exhibition of art by pupils, staff and friends. In addition, there will be two other 'open studios' in the Ferris, one showcasing photography. In the Gower visitors will be able to view paintings, exquisite drawings and furniture; and in Swalcliffe a professional illustrator is exhibiting in the Village Hall.

The artists are working together to create an easy to follow Sibford Trail. More details next month. But put the dates in the diary now – Saturday 22 May through to the Bank Holiday Monday, 31 May, although individual sites may have slight variations in days and hours of opening. The five artists at Sibford School are promising a bonus of good home-made cakes and teas at the two weekends, raising money for Save the Children. All the artists and makers would love to see you. You may even get a chance to see them at work.

WELCOME TO SIBFORD

If you are a new resident of Sibford and have not yet received a copy of the "Welcome to Sibford" booklet, please telephone Ivor Hopkyns on 788367 (Gower or Burdrop) or Ann Bishop on 788188 (Ferris), and a copy will be delivered to you. The information will help to make you feel at home - by acquainting you with the services, schools, clubs and societies that are currently active in the villages.



SIBFORD SCHOOL LAUNCHES COMMUNITY EDUCATION PROGRAMME

Sibford School in Sibford Ferris is to launch a new programme of adult community education.

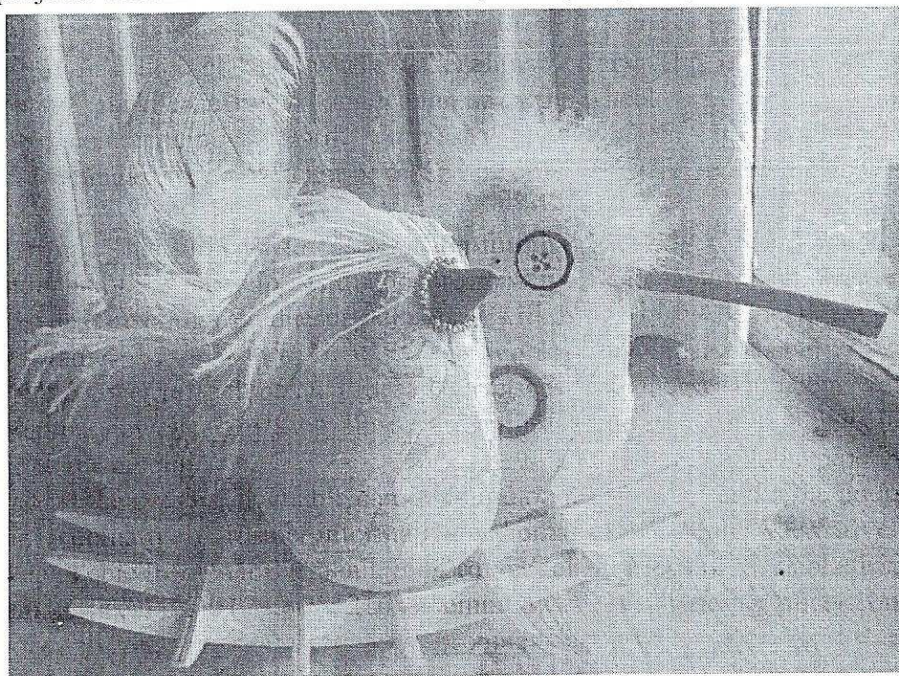
Building on the success of existing evening classes in life drawing and ceramics, the school is to introduce a number of new subjects for the summer term.

Head Michael Goodwin said: "We have some fantastic facilities here at Sibford School which we believe should be made more widely available to those living in the local community.

"We have been looking at the possibility of introducing an adult community education programme for a while, and I am delighted that this is now coming to fruition."

Already confirmed for the summer term are:

Soft Sculpture Workshop: this course is aimed at developing skills such as embroidery, appliqué, tie die, batik, beading and sequins. Initial projects will include beautiful bird sculptures (see photo) and cushion



covers, all made from recycled materials. Mondays 6.30pm – 8.30pm commencing 19th April.

Course fees: £50 per half term (five sessions)

Life Drawing: this course is aimed at experienced artists, enthusiastic amateurs or those wanting to try something completely different. Mondays 6.30pm – 8.30pm commencing 19th April.

Course fees: £40 per half term term (five sessions)

Lawn Care and Maintenance: like to make more of your garden lawn? Then this course is for you. Topics covered will include: Types of lawn; looking after your lawn; getting rid of moss; troubleshooting; mowing; machinery maintenance and usage; and creating and designing a lawn from scratch. Wednesdays 6.30pm – 8.30pm commencing 21st April.

Course fees £42 per half term (six sessions).

Adult Learn to Swim: this basic beginners course will take adults from being complete non-swimmers through to swimming up to 15 metres on their front and back. The course will develop basic stroke technique for breaststroke and back crawl, provide a chance to learn shallow water skills, overcome fears and develop confidence in the water. Thursdays 11am – 12 noon commencing 22 April.

Course fees £25.20 per half term (six sessions).

Ceramic Pottery: This is an unstructured class where students may throw on the wheel, or pursue any alternative making technique they wish. Thursdays 7pm – 9pm commencing 22 April.

Course fees: Block of six evenings, which need not be taken on consecutive weeks: £52.

Community Reading Group: This group will meet on the fourth Wednesday of each month and offers participants the opportunity to discuss recent 'reads'. The next meeting (Wednesday 28 April) will discuss Wolf Hall by Hilary Mantel.

Course fees: £3 per session to cover refreshments. Proceeds to charity.

As Sibford Scene went to press, jewellery making, flower arranging and knitting classes were also in the pipeline.

Up-to-date information about the courses available can be found on www.sibford.oxon.sch.uk. Alternatively, further information and details of course registration are available from Ali Bromhall, Sibford School Community Development Officer, on 01295 781216 or email abromhall@sibfordschool.co.uk.

**Notice of a Public Meeting
to be held in the Hall of
Sibford Gower Endowed Primary School
on Tuesday, 6th April 2010 starting at 7.30pm**

**Proposed future housing in The Sibfords.
Cherwell District Council Draft Core Strategy**

Residents of the Parishes of Sibford Ferris and Sibford Gower are invited to a Public Meeting to be held in the Hall of Sibford Gower Endowed Primary School on Tuesday, 6th April 2010 starting at 7.30pm to discuss the following matter.

Cherwell has to accommodate significant housing growth in the period to 2026 and the District Council has just published its draft plans for where the new housing should go. Most will go to Banbury and Bicester but some is also planned for some of the villages including the Sibfords. The draft plans make provision for a total of 250 new homes across the following villages: Cropredy, Hook Norton, Fritwell, Steeple Aston and Sibford Ferris/Sibford Gower. The draft plans do not identify where these homes might be built or, indeed, when in the period to 2026. This information will come forward in early 2011 when there will be a further opportunity to comment.

The District Council is now asking for comments on these proposals and the Parish Councils of Sibford Ferris and Sibford Gower would like to hear from residents on this important issue.

Further information is available from the District Council's website www.cherwell.gov.uk/localdevelopmentframework

At the Meeting, the facts as proposed will be presented and the purpose will be to gather comments and views to aid the formal response to the consultation to be made by both Parish Councils. What needs to be known, in principle, is whether growth is supported and the benefits that this could bring or whether there is opposition to any growth; where in the villages growth may be envisaged and what areas should be protected from development; what additional facilities may be needed if major growth is to happen (eg sports fields, improved bus service, employment opportunities, additional shops, street lighting).

Please note: this issue of the Core Strategy is completely separate from the possibility of a small project for additional housing for local residents recently canvassed in a questionnaire, which will not be discussed on this occasion.

Please come along to the Meeting and express your views and comments.

Find the Whites - Summer is Coming

Sibford Cricket Club is well advanced with its preparations and has high expectations for another successful season. On the back of winning promotion to the South Northants League Division 1, Chris Sabin was unanimously re appointed as Saturday captain.

The Wykham Arms have proved to be excellent hosts and a really supportive club sponsor. Their fine post match hospitality means that our opponents are looking forward to our home fixtures both on and off the pitch, which means we have not lost any of our regular fixtures. In fact, given the number of players we have, the Sunday fixtures have been increased to ensure everyone has sufficient games although new players, particularly youngsters, are always welcome.

Pre season cricket Nets are arranged as follows;

Tuesdays and Thursdays, 30 March, 1, 6 and 8 April at Sibford School Sports Hall at 6.00pm.

Tuesdays and Thursdays 13 to 29 April at Bloxham School Outdoor nets at 6.00pm

All current and new players welcome.

Serenity at Sibford

Gautherns Barn, Sibford Gower, OX15 5RY

01295 788463

*Guinot Facials * Massage *OPI Manicures & Pedicures * Waxing & Electrolysis * Thread Vein Removal

* Skin Tag Removal * Milia/Age Spots/Sebaceous Cysts treatments
* Reiki * Eyelash Tinting

* Sports & Remedial Massage * Pilates Studio * Monthly Botox & Skin Regeneration clinic

* Pamper Packages & Pamper Days

Open Monday, Wednesday, Friday 9.30-5, Tuesday and Thursday are exclusive pamper days,

Saturday 9.30-2 (later appointments are available with prior notice)

www.serenityatsibford.com

A CONCERT OF CHORAL MASTERS

The Warriner Choral Society

with the Akeman Chamber Orchestra and professional soloists
will perform some of the richest sacred choral works on
**Saturday 24th April at 7.30pm in the Church of St Peter and
St Paul, Deddington,**

Together with orchestral pieces *Exultate Jubilate* (Mozart),
Concerto for two trumpets (Vivaldi) and a suite from Handel,
there will be the stirring interpretations of the *Te Deum* from
Haydn and Mozart.

The concert, led by Musical Director Martin Quinn, will culminate
in the hugely-popular

Gloria, by Vivaldi.

Refreshments during the evening,

Tickets £10 (£8c) are available from

Hamptons International Deddington, One Man Band Banbury,
Bloxham Post Office, Jenny on 01295 721224, or on the door.

Oddjob

CARPENTRY • PLUMBING

ELECTRICS • HOUSEHOLD REPAIRS

**No need to call in four
different contractors ...*Call me!***

For your building, DIY and home improvement needs
KITCHEN & BATHROOM FITTING • HEATING INSTALLATION
CARPENTRY • PLUMBING • ELECTRICS • SECURITY ... and more

DIY? Don't do it yourself ...*Call me!*

For a comprehensive and reliable local service,

Call HUGO SEELY on 01295 780355

FREE NO-OBLIGATION ESTIMATES

Trading in the Sibfords since 1992 - Excellent local references available

NEIGHBOURHOOD WATCH

We have received a number of warnings about bogus callers. Some have been bogus police officers attempting to gain entry.

The Police advice is: do not let them in, take their name and shoulder number call the Police on 08458 505505 to check whether the person is a genuine police officer or not; if they are genuine they will not mind waiting.

Always check the identity of any caller you are not expecting with their employer and never give out your bank details.

Sadly, a few weeks ago we had a burglary in Sibford Gower. The resident was putting their washing on the line. For the person concerned it must be a very distressing experience. Please be aware and report any suspicious behaviour to the Police 08458 505505 with as much detail as possible, if it is

urgent 999.

The English Furniture Workshop

Beautiful Hand Painted

Antique Furniture

Amanda Ransom, Sibford Gower

Tel: 01295 780799 M: 07932 613663

www.englishfurnitureworkshop.co.uk

Bed & Breakfast

AGDON FARM

Nr Brailes

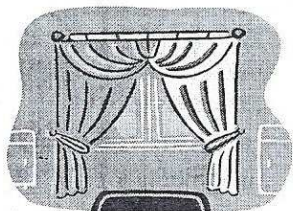
**Comfortable rooms
in old stone farmhouse**

**Tel: Maggie Cripps
01608 685226**

Curtains

(hand or machine sewn)

**Roman Blinds,
& Cushions**



Made to your requirements

Please call Carolyn on 01295 780695

BUILDING PLANS BUILDING REGS. SUBMISSIONS

Extensions * Loft conversions
Listed Buildings work * New build

D.R. BOVILL, B.A.

DESIGN AND PLANNING CONSULTANT

Private and Trade enquiries welcome
01295 788922 davidbovill@btinternet.com

Parish Transport Representative

Some years ago, the Oxfordshire Rural Community Council and Oxfordshire County Council established a network of Public Transport Representatives (PTRs) to give communities a means of voicing their needs and concerns about local transport.

They play an important part in shaping and supporting local services. They have regular opportunities to meet with officers and fellow PTRs at meetings held at County Hall. They will receive and provide information with a view to improving transport provision within their communities

Sibford Ferris and Sibford Gower Parish Councils are pleased to announce that local resident Mr Mike Harper-Tarr has agreed to take on the role of Parish Transport Representative acting for both Parishes and grateful thanks are extended to him for so doing.

Mike Harper-Tarr will be pleased to receive any comments or questions regarding local transport that you may have and he will take matters up with the appropriate department. Please route any such comments and questions via the Clerks of the respective Parish Councils.

Carolyn Heather
Clerk, Sibford Ferris PC
(Tel: 780695)

Peter Hardman
Clerk, Sibford Gower PC
(Tel: 780391)

Miss 'T' Catering.

**Catering for events such as:
Anniversaries, Weddings,
Christenings, Birthday parties,
Funerals**

And private dinner parties.

~.~.~

Also available

Cutlery and Crockery Hire.

Contact Victoria Taylor on:

Mob: 07841 910037

Home: 01295 788924

**O
p
u
s**

Alan Berks

SPECIALIST INSTALLER

Kitchens and Bathrooms

Natural and handmade

floor and wall tiles

Solid wood flooring

01295 780652

07816 592 124

Alan.berks@btopenworld.com

The Spinney

Sibford Gower, Banbury, Oxon, OX15

Oxon Computers

Qualified PC Engineer

Danny, Company Owner

**PC repair, maintenance & configura-
tion**

Tel: 01295 788766 Mobile: 07767 025752

Fax: 01295 788766

Email: Admin@oxoncomputers.co.uk



**QUALITY FISH DIRECT
FROM**

Proprietor: T.P.Martin

Tel: 07812 361853

GRIMSBY MARKET

**Best fresh fish and shell fish to your
area direct from Grimsby on the
Lincolnshire coast**

**I'll be at Sibford Village Hall car park
EVERY MONDAY from
approximately 4pm till 5.30pm**

kathartic

Support through Art for Katharine House Hospice

The
Katharine
House
Hospice

An Exhibition and Auction of Original Art

Donated by local professional artists

With Champagne, Canapes and Live Music

7.30pm, Saturday 24th April Tudor Hall School, Wykham Park Banbury.

All money received will benefit nursing care - Please support us

Tickets available from John Marshall. Tel 780348

Urgent

Request for help from Sibford Gower Primary School

Following the recent Art Exhibition held at the Primary School, we are now in urgent need of dry, secure storage for the wooden Art Boards that are used to display the art work. If you are able to offer "flat" storage space equivalent to a third of a single garage, please would you get in touch with me on tel 780695.

Many thanks.

REIKI
HEALING FOR HUMANS
AND ANIMALS

LYN SIMMS
MASTER PRACTITIONER

01295 780 655

BIKE REPAIRS & SERVICING



General servicing
Repairs
Cleaning & maintenance
All makes and types of bike
Reasonable rates, speedy service

For all your bike repair needs, call: 01295 780355

FRANCIS MORDAUNT MCFHP MAFHP

*Member of the Open College of Foot Health Professionals
Member of the British Association of Foot Health Professionals*

FOOT HEALTH PROFESSIONAL

To enquire about a home visit please

telephone: 01295 730615

Professional Foot Care in Your Own Home

Richard Wallington
Builder

Block Paver Drives a Speciality
Also Extensions, Patios
Fencing etc.

High Quality Work, Free Estimates

01295 780705 07743 932545

(Sibford Gower) (Mobile)

HOLY TRINITY CHURCH NEWS

Mothering Sunday had a huge number of young people present accompanied by their parents and their visit was well rewarded: to greet them all was a screen with pictures delivered by computer of various mothers and babies, humans, many animals and mother churches to remember the true origins of this Christian celebration. Rev Glyn Evans who is the Rural Officer for the Diocese of Oxford and who, most of us know, lives in the village used a well organised computer to assist his talk for the children; a Simnel cake was mixed with much young enthusiasm (to be baked and eventually eaten at Easter, so don't miss out) and beautiful posies were presented to the many mothers and grandmothers present. A highly suitable service brilliantly formulated by Erica Wimbush and Evey Boughton and presented by Glyn with much help from posy makers, cooks, and many others, not forgetting Peter Hardman our own musical maestro.

The Lent Austerity lunches and Lent Discussion Groups have continued around the Benefice and the Benefice Choir is rehearsing hard for the usual Good Friday choral service in Broughton at 7 pm. The other Lent and Easter services are as set out elsewhere in this publication but during Holy Week there will be Services of Matins at 7.30 am in Sibford each day (including Good Friday).



Sarah Walker
Vivienne Nott

fresh flowers, fresh ideas

Gorgeous bouquets & arrangements
Wedding bouquets, churches,
marquees and receptions
Flowers for supper parties,
house parties and celebrations
Funerals and memorials

Contact :

Sarah :01295 788595 Viv:01608 652819



**GODSWELL NATURAL
THERAPY CENTRE**

*Godswell Lodge, Church Street, Bloxham
Banbury, Oxon OX15 4ES*

**Acupuncture, Alexander Technique,
Aromatherapy, Art Therapy,
Chiropody, Chiropractic,
Counselling & Psychotherapy,
Cranio-sacral therapy, Homoeopathy,
NLP, Nutrition, Physiotherapy,
Reflexology, Remedial Massage,
Reiki, Spiritual Healing,
Shiatsu, Yoga.**

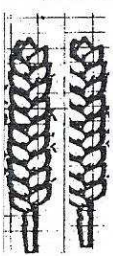
Fully qualified professional therapists
For information Ring 01295 720347



**FARMHOUSE
BED AND BREAKFAST
GRANGE FARM, SWAL-
CLIFFE**

*Enjoy warm hospitality & peaceful
surroundings in our comfortable
18th C Farmhouse*

CONTACT BARBARA TAYLOR



Contributions for the
April
Sibford Scene
to the Shop or Editor by
April 20th

The Annual Parochial Church Meeting will be held in Church at 7.30 pm. on Wednesday 24th March. Evelyn Boughton and Norman Nash have been nominated as Churchwardens also Peter Abbott, who has generously agreed to stand as Treasurer to take over from Cathy Cawley. The other 7 PCC members will retire as usual and will be eligible for re-election. Erica Wimbush continues as Deanery Synod representative for a further year. The meeting will consider the proposal concerning the amended constitution of the PCC. Under this there will be a limitation of the length of service of officers and two PCC members will be disallowed re-appointment for a one year period.

The first of this year's series of **Coffee Mornings** will be held in Sibford Church on Saturday **April 10th**. The others will be announced shortly.

Did you make an advance note in your diaries for

The Annual Church Fete

which will be held at the Village Hall on Saturday 10th July at 2.30 pm.?

This is one of our two major fund

raising events of the year

Catherine Loy, the representative from Christian Aid, Oxford office will be speaking at the morning service on **May 9th** instead of May 2nd as previously announced. It is hoped that this service, which will mark the start of **Christian Aid Week**, will be on ecumenical lines and attended by as many as possible from the various Christian denominations in the

village. The collectors who have generously agreed to operate are especially welcome as Catherine will be able to tell us a great deal about the Christian Aid organization in its many aspects and to answer questions which may well be put to us the doorsteps.

WEB DESIGNER

Websites designed (*From £195*)

Web Hosting packages

Domain Names purchased

We can help you with
all your requirements



Planet Web Studio

Evolving your internet presence

www.planetwebstudio.com

Tel: 07740 404678

Sibford Ferris Parish Council:

Chris Franklin (Chairman)

- Tel: 780210

John Simms - Tel: 780655

Maureen Hicks - Tel: 780259

Joanne Connor - Tel: 788948

Adrian Lamb - Tel: 780380

Carolyn Heather - (Clerk)

- Tel: 780695

Church Services

Society of Friends		Sunday at 10.30 am
Methodist		Sunday at 11.00 am
Roman Catholic Mass	Wroxton	Sunday at 9.00 am
	Brailes	Sunday at 11.30 am
Baptist	Hook Norton	Sunday at 10.30 am
Church of England, Holy Trinity, Sibford Gower.		

April

- Thu 1st Maundy Thursday Benefice Eucharist of the Last Supper 8.00pm
- Fri 2nd Good Friday Activity Morning 9.30 - 12noon at the Primary School
- Fri 2nd At the Cross, devotional service 1.30pm at Tadmarton
- Fri 2nd Words and Music at Broughton Church 7.00pm
- Sun 4th Easter Communion 9.30am
- Sun 11th Benefice Eucharist at Swalcliffe 10am
- Sun 18th Holy Communion 9.30am
- Sun 25th Holy Communion 9.30am

May

- Sun 2nd Benefice Eucharist 10am



RED HORSE VALE LTD

All Types of Fuel, Coal, Smokeless, Gas,
Logs, Kindling, Barbecue Needs
Central Heating Oil, Oil Tanks & Coal Bunkers
Landscape & Building Materials, Garden Centre &
Garden Supplies. Farm & Country Sundries
Equestrian Products, Horse & Pet Feeds
Open: Monday - Saturday 8am - 5pm
Windmill Farm, Banbury Road (A422),
Oxhill, Warwickshire CV35 0RP
Tel: 01926642832
Fax: 01926 642 853

Cotswold Sketchbook

Receive a mini oil painting in your
inbox each weekday ~
fresh off the easel, go to

www.cotswoldsketchbook.co.uk

and enter your email address.
You will get no spam and the
address will not be forwarded.

• Paintings are for sale on a first
come basis

~

Sibford Bus Services

Cherwell Rural Dial-A-Ride Scheme

A mini bus with tail-lift to take **elderly or disabled people** and escort to Banbury (max fare £1.60) Door-to-Door service. Book at least one day in advance. Operates on Wednesdays & Thursdays. Phone 263777 for details.

BCTA also takes bookings for groups of 8 or more on a weekly/monthly basis (Wednesdays & Thursdays) to and from Banbury. Tel; 263777

Stagecoach – Timetable commencing 31st May 2009
Mondays to Saturdays (No services on Sundays or Public Holidays)

Bus 50A. From Banbury towards Stratford-upon-Avon

Banbury, Bus Station	08.30	10.55	12.45	14.26	16.05	17.10	18.10
Sibford Ferris, Cross Roads	08.52	11.17	13.07	14.48	16.27	17.32	18.32
Sibford Gower, School	08.55	11.20	13.10	14.51	16.30	17.35	18.35
Shipston,	09.15	11.40	13.35	15.11	16.50	17.55	18.55
Stratford on Avon, Wood St.	09.40	12.09	14.04	15.40	17.19	18.24	19.24

Bus 50A. From Stratford-upon-Avon towards Banbury

NS

Stratford on Avon, Wood St	06.20	07.10	09.05	11.10	13.10	15.10	16.24
Sibford Gower, School	07.04	07.55	09.56	11.56	13.56	15.56	17.14
Sibford Ferris, Cross Roads	07.07	07.58	09.59	11.59	13.59	15.59	17.17
Banbury, Bus Station	07.28	08.25	10.21	12.21	14.21	16.21	17.39

NS = Not Saturdays

All buses will operate low floor wheelchair accessible vehicles.-

For complete details of all the stops that are served by service 50A, timetables are obtainable from bus drivers and Sibford Stores & Post Office.

Fares:-

Sibford Ferris & Sibford Gower to Banbury: Single £2.30 (Child£1.15)

Return £4.40 (Child £2.20)

Sibford Ferris & Sibford Gower to Stratford: Single £4.00 (Child £2.65)

Return £6.00 (Child £4.00)

Seven days unlimited travel £20.00

Twenty eight days unlimited travel £76.00

Calendar of Events

April

- Fri 2nd Children's Activity Morning at the Primary School 9.30 - 12
- Fri 2nd Easter Egg Hunt at the Village Hall 2.30pm p8
- Tue 6th Housing Plan Public Meeting. 7.30pm , the Primary School p14
- Wed 7th Sports Roadshow at the Primary School in the afternoon
- Sat 10th Coffee Morning in the Church p21
- Sun 11th Whatever The Weather at Swalcliffe Church p4
- Tue 13th W.I. A.G.M. P5
- Wed 14th Sports Roadshow at the Primary School in the afternoon
- Wed 14th Mobile Library in the Sibfords (2.40 - 4.10pm)
- Wed 14th Horticultural Society Tubs and Hanging Baskets V. Hall 8pm
- Thu 15th Sibfords Society talk on Alcan. Village Hall 8pm
- Sat 17th Sibford Gower Litterblitz 10am at the Village Hall p10
- Tue 20th Deadline for contributions to May Sibford Scene p20
- Sat 24th Art Exhibition and Auction p19
- Sat 24th Warriner Choral Society at Deddington Church. P16
- Wed 28th Mobile Library in the Sibfords (2.40 - 4.10pm)
- Wed 28th Sibford School Community Reading Group 6.30pm p12
- Fri 30th Sibford School Open Day

Cover picture. The Primary School

Sibford Scene

Editor; Adrian Lamb. Grounds Farm, Sibford Ferris. 780380

e-mail adrian.lamb@care4free.net

Treasurer; Timothy Wimbush, The Rectory, Acre Ditch, S.Gower
780555

Advertising; Ivor Hopkyns, Elmridge Farmhouse, Sibford Gower,
Banbury, Oxon. OX15 5RT. Tel 788367