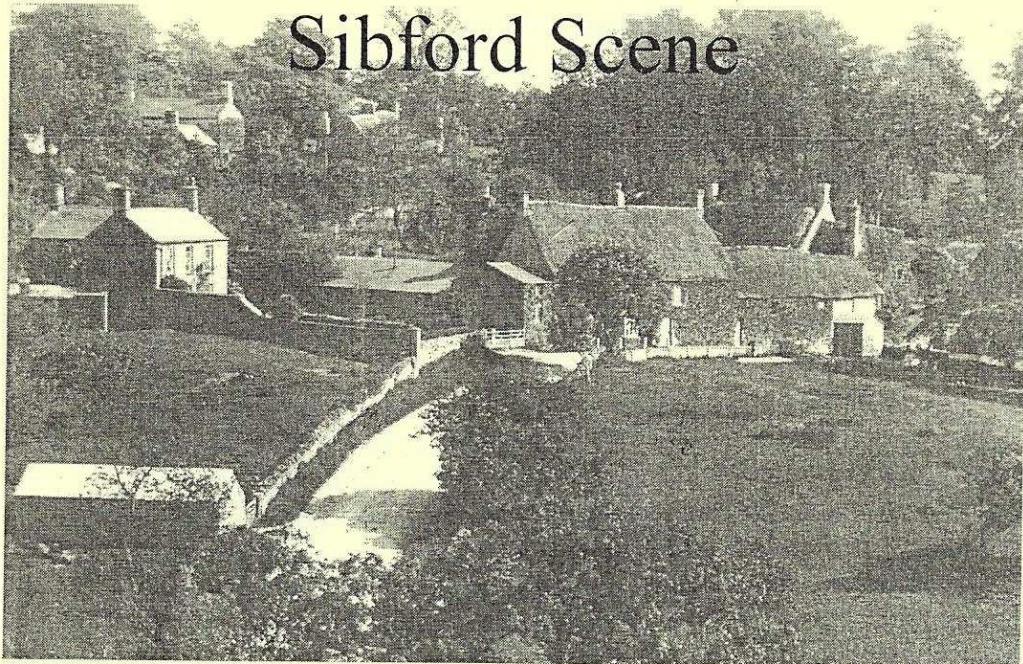


Sibford Scene



March 2010

No. 320

Sibford Gower Primary School
Art Exhibition and Craft Fair

Saturday 6th and Sunday 7th March
10.30am - 4.30pm Free Admission

Sibford Cricket Club
Annual General Meeting
Sunday 14th March at 7pm in the Wykham Arms

The Sibfords Society
'DOMESDAY 2010'

~~Thursday~~ ~~Monday~~ ~~12~~ March at 8.30pm in the Village Hall
18

Thames Valley Police
DROP IN SURGERY
Wednesday 17th March at the Village Hall 2.30 - 3.30pm

Nature Notes

Jan. 20th. Our lawn looked very crowded for a time this morning. I counted 7 wood pigeons, 3 hen pheasants, 1 cock pheasant and a few smaller birds.

Jan. 24th. A comparatively spring like day. My son saw a brimstone butterfly on Farthinghoe nature reserve but as it is unlikely to find a source of nectar after the weather we have had, its activity will reduce its chances of surviving the winter. The ones that stay in hibernation until spring really comes, do best.

Jan. 30th. After a few days of slightly warmer weather it is really cold again at 22F (-5C) this morning.

Feb. 11th. Very cold. A cock pheasant and up to 4 hen pheasants are coming to the food we put out for smaller birds. 30 years ago pheasants nested successfully in this garden but now with so many badgers around every night, the eggs would have very little chance of hatching undetected. I would guess that there are now very few pheasants that nest successfully in the wild as badgers seem to search all the hedge bottoms. I think they have also been a major factor in the decline of partridges over the last 60 years. With their taking of hedgehogs, bumble bee nests and the eggs of ground nesting birds I now see them as our most serious predator of wild life. On the credit side I believe they help to keep the rabbit population down by digging out shy rabbits from the short breeding burrows when they find them.

Feb. 14th. We were surprised to hear the hoot of an owl just before midday in Sibford Gower. I wonder what disturbed it. This afternoon I watched a sparrow hawk gaining height as it was followed by two rooks. It was very high for a sparrow hawk when it suddenly dived, getting up to a surprising



HOLMBY HOUSE
SIBFORD FERRIS
A stunning setting for
special celebrations

From Buffets to Gourmet Dinners

Formal dining for large groups
Garden parties Business meetings
Luxurious B & B

Self-catering accommodation

Tel/Fax:01295 780104

www.holmbyhouse.com

Sally.wass@btinternet.com

THE VILLAGE SHOP
HOOK NORTON

NATIONAL LOTTERY

Grocery - Greengrocery - Bakery
Wines - Spirits - Confectionary
Newspapers - Magazines - Cards
Video Rental - Bottled Gas

Open Monday to Friday

7 am to 8 pm

Saturday 8 am to 8 pm

Sunday 8 am to 6 pm

Telephone: 01608 737245

speed by the time it went into trees two or three hundred yards away, causing some pigeons to fly out in a panic. Whether it was trying to get a pigeon or only escaping from the pestering rooks I don't know. Feb. 16th. A song thrush was singing this morning. They often start earlier than this but have probably been too busy finding enough food to survive through the cold weather. If anyone has frogspawn on their pond Bill Crabtree would like some to try and re-establish frogs in Field Barn pond. He can be contacted on 780635

Sport Relief 2010: Rise to the Challenge

Sport Relief is back – and it's coming to Bloxham! The town is set to host one of Sainsbury's Sport Relief Miles on Sunday 21st March, and needs local people to show their support by entering now at www.sportrelief.com. The Bloxham Mile sets off at 9am. The Sport Relief Weekend is taking place from Friday 19th to Sunday 21st March and it'll be three whole days of energy, entertainment and events to help the nation rise to the challenge! The whole thing kicks off on Friday 19th March when everyone gets active, raises cash and has a ball at home, at work or at school; Then it's the big one, the chance for the nation to come together and take part in the Sainsbury's Sport Relief Mile on Sunday 21st March. For more information on Sport Relief 2010 visit sportrelief.com



FOLLY FARM
BACK PAIN
CLINIC

ACHES & PAINS?

I can help you!

**Just visit your local clinic
between Sibford & Swalcliffe**

Contact: **John McArthur**
Back Pain Therapist
B.Sc. & Dip (Chiropractic)

Tel: **0845 862 4 862**
(Local rate)

Mob: **07740 404 678**

Ann Woolgrove
FABRICS, CURTAINS & SOFT FURNISHINGS

Personalised design service and consultancy in
your own home.

Beautiful bespoke Curtains, Roman & Roller
Blinds & Soft Furnishings, handmade to the
highest standard.

Advice on every kind of Fabric from numerous
suppliers.

Stylish complimentary Cushions & Loose
Covers.

Re-upholstery service.

Custom made Bedspreads & Headboards.

New Sofas & Chairs

Tel/Fax: 01295 788145
Email: info@annwoolgrove.com
www.annwoolgrove.com

WHATEVER THE WEATHER!

An evening of fun and light entertainment.

SWALCLIFFE CHURCH – SUNDAY 11TH APRIL 2010 7pm

In aid of Swalcliffe Church Tower Appeal

Several fine actors, all of whom live in Swalcliffe and the surrounding villages have generously offered their services in aid of the Swalcliffe Church Tower Appeal at Swalcliffe Church on Sunday 11th April.

Drinks will be from 7.00pm. with the performance starting at 7.30pm.

Gillian Bevan, Jane Booker, Lynn Farleigh and John Woodvine, all well-known for their work with the RSC in Stratford-on-Avon and London, and in numerous TV series and films will be joined by **Ben Lamb** and **Pippa Bennett-Warner**, two future young stars currently studying at RADA. They will take part in *Whatever the Weather* a delightful selection of words and music devised by Roger Pringle, former director of the Stratford-on-Avon Poetry Festival and directed by Lynn Farleigh.

You are urged to look forward to the Spring and mark Sunday 11th April in your diaries. We are looking forward to seeing you – Whatever the Weather!

"When two Englishmen meet their first talk is of the weather"

Tickets £12 (to include a welcome drink and canapés) are available from:

Gay Harris 01295 788427 Email: gay.harris@virgin.net

Sibford Stores & Post Office

Sibford Ferris

OX15 5RG

Telephone 01295 788317 / 788348

YOUR LOCAL CONVENIENCE STORE AND NEWSAGENT

We deliver newspapers and magazines 7 days a week to all the surrounding area. Place your regular order today, whether for 1 day a week or 7. Always a wide selection of magazines available, specialist titles available to order.

Chilled & Frozen foods, groceries, cigarettes, beers, wines and spirits, fresh fruit and vegetables, pet foods, household goods, toiletries & medical requisites and lots, lots more.....

National Lottery, Photocopying, fax service, dry cleaning

We will also undertake your mailings for you, just ask.

Always an excellent selection of Hook Norton bottled beers in stock.

Telephone your grocery order for free local delivery.

OPENING HOURS

Monday to Saturday 5.00am to 6.00pm

Sunday 5.00am to 1.00pm

PLEASE SUPPORT YOUR LOCAL POST OFFICE, THERE ARE LOTS OF PRODUCTS AND SERVICES AVAILABLE ON YOUR DOORSTEP



**Women's
Institute**

Sibford WI. Meeting - Tuesday, 9th February 2010

Twenty members were welcomed by President Glennis Hardman. In Lynda Conway's absence, Rosemary Neal deputised as secretary. Following the Programme Planning Meeting on 26th January, Jane Martin has arranged some interesting speakers for the coming year.

When Amanda Wood, today's speaker, climbed aboard the Big Red Train a few years ago, she was about to embark on a 6,000 miles journey on the Trans Siberian Railway. Departing from Moscow, she would travel past the Ural Mountains, cross from Europe into Asia and pass through seven time zones. Eventually, at the end of seven and a half days and nights of continuous travel she would reach her destination - and she would still be in Russia.

Building the railway (or the Grand Track as it is known) across Siberia began in the late 19th century. It is a cruel terrain - ever-present perma frost, deep snow covers the ground for six months of the year and temperatures fall as low as -54 degrees Fahrenheit. The labourers had to deal with 8ft high nettles, mosquitoes, methane gases and anthrax. The vast area of coarse marshland made the building of the rail embankments extremely hazardous and difficult. It was the home of predatory animals such as wolves and man-eating tigers. However, the single track was eventually completed somewhere around 1910.

Illustrating her talk with excellent slides and photographs, Amanda went on to tell us about some of the stunning and lovely countryside through which she travelled before reaching her destination in Vladivostock. One highlight was Lake Baikal: the deepest, longest and most ancient freshwater lake in the world. It is 455m above sea level and approximately 1,500m deep. Over 300 rivers flow into it but only one river flows out. It is the habitat of a unique type of seal as well as hundreds of flora and fauna species. Sadly, there is insufficient space to provide here more than just a 'taster' of what we learned about Amanda's interesting trip - we certainly found it an enlightening and thought-provoking tale.

She was warmly thanked by Caroline Jennings. Charlotte Cox and Mary Hill served welcome cups of tea and a selection of delicious cakes. Our speaker judged the competition for a picture or photograph of a train and awarded first to Valerie Taylor, second Sue Court and third Jane Martin.

We meet again in the Village Hall on Tuesday, 9th March at 2pm and look forward to hearing Patricia Huth Ellis giving us an afternoon of poetry, prose and music. The competition is for Old Sheet Music. Visitors welcome.

Margaret Gardiner

LOCAL HONEY

USUALLY AVAILABLE

Bill Wealsby

Tel:01295 788405

Swarms of bees wanted

A. Sabin

LOGS

Millbarn, Hook Norton

Telephone 01295 788421

Mobile 0781 7709044

The Sibfords Society

Members and their guests enjoyed our annual Old Fashioned Social in January – a chance to meet with friends to cheer up a cold January evening. The Bring and Share supper provided a delicious variety of food for our buffet table and we were entertained by a group of young musicians from Sibford School. A collection during the evening raised a substantial amount for the School's Haiti appeal fund.

Our AGM will be held at 8pm on Thursday ¹⁸15th March in the Village Hall and members are reminded that annual subscriptions will be due. Following the short business meeting:

ALL VILLAGERS ARE INVITED TO AN OPEN EVENING 18th MARCH at 8.30 pm in the VILLAGE HALL 'DOMESDAY 2010'

There will be a short presentation to outline the reasons why the Society is undertaking this survey of life and activities in the village during 2010. We will show some material from our Archive to give information about life in the village in days gone by, explain the various aspects of the survey and show the form which will be delivered to all households in April. There will also be an opportunity to ask questions. It is important to us and vital to the success of this project that everyone is a part of this survey which will provide a look at our village in the 21st century for future generations.

We look forward to seeing as many villagers as possible for this evening to convey our enthusiasm for this project and to reassure villagers of the anonymity of this survey.

DO COME ALONG AND SUPPORT DOMESDAY 2010

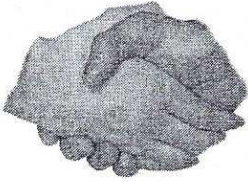
There will be a warm welcome and tea and coffee will be served.

The Firs, Hook Norton, Banbury, OX15 5DD
Email: enquiries@graphics-direct.co.uk
Phone: 01608 730555 Fax: 01608 730271

For all types of Vinyl Graphics & Signage.

Theresa Harper

DESIGNING PRODUCING & FITTING



Friendship Club

March is here and perhaps the weather MIGHT warm up a bit. I don't know about other Members but I like to see some warm sunshine.

Our speaker for March is the Rev. Tim Wimbush who will recount some thoughts about being a magistrate. Then on March 16th we go to Clifton Chambers for their carvery lunch.

Frog Notice

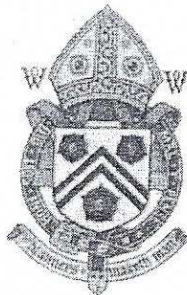
At this time of year, I seek the co-operation of motorists and pedestrians to look out for frogs on the road and to do their best not to squash them as they make their way to Sibford Gower Village Pond to mate. Frog numbers have dramatically declined over the past few years and last March I noted only four frogs in the pond. In the Sibford Gower area, garden ponds were also lacking in frog numbers. It will be interesting to see if there is any change this Spring and I should welcome reports from garden pond owners.

Glennis Hardman (Tel: 780391)

DAMIAN AND DEBBIE WELCOME YOU TO THE WYKHAM ARMS

Temple Mill Road, Sibford Gower, Nr. Banbury OX15 5RX
Tel: 01295 788808

Quiz Night
on First Sunday of the Month
'Hooky Night' Wednesday
evening 6.00 - 7.30 pm
(Beer, Lager, House Wine)
Wi-Fi Hotspot Service
Bar only Sunday Night, Closed
All Day Monday



Fantastic Family Sunday
Lunch
(Booking advised)
Freshly prepared
local produce.
Opening Times
11.00 am - 3.00 pm
6.00 pm - 11.30 pm

www.wykhamsarms.co.uk

email; info@wykhamsarms.co.uk

VILLAGE HALL NEWS

SALSA OXFORD return for a Carnival Evening in Sibford Village Hall on Saturday 13th March at 8pm. Tickets are £8-00 and include a welcome Latin cocktail to get you in the mood to Salsa the night away! No need to bring a partner. Bar available. Tickets available from Joan 01295 780410, Muriel 780025 or Anita 788557.

EASTER EGG HUNT On Good Friday 2nd April 2010, you can trek the village in search of clues and chocolate! There will two entry classes ,one for the little ones and one for older children. More details next month, or contact Joan on 01295 780410, or Muriel on 780025.

VILLAGE FAYRE and **DOG SHOW** 2010 will be held on June 19th. Anyone who would like to help before or on the day please contact Ginny on 780373.

Our **BOOKING SECRETARY** at the moment is Anita Spencer on 01295 788557

We had some more lucky winners in the Village Hall Lottery game, when the 3rd draw took place on January 30th. 1st prize of £43 went to Judith Byrne. 2nd prize of £21 went to Peter Neal, and 3rd prize of £12 to Ivor Hopkyns.

Also on Jan 30th we played host to the fantastic **COSMIC SAUSAGES** in their usual exuberant form. One villager remarked that she had not laughed so much for years!

WOODSIDE GARDEN MAINTENANCE

Border Maintenance

Grass Cutting

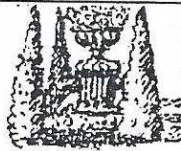
Hedge Cutting

All Your Garden Needs Etc

BTEC and NCH Qualified

Call Matt Simms

07976 644 509 or 01295 780 655



BED & BREAKFAST

Buttslade House Cottage (Sibford Gower)
offers comfortable accomodation with
en suite bathroom overlooking a tranquil
English country garden.

Contact Diana Thompson

(01295) 788818

or janthompson50@hotmail.com.

www.buttsladehouse.co.uk

Sibford Cricket Club

Annual General Meeting

7.00pm 14th March

Wykham Arms

All current players, new players and villagers welcome

Thames Valley Police

DROP IN SURGERY

The Neighbourhood Policing Team in the Banbury Rural Area is to hold a Drop-In Surgery in Sibford Village Hall Car Park on:-

Wednesday, 17th March 2010

from 2.30pm to 3.30pm

The Team is anxious to meet with those members of the public who may have questions to ask or points to make.

It is hoped that local residents will avail themselves of this opportunity.

Sports & Remedial

Massage

Aid sore, aching
muscles and
injuries

Victoria Smith

ITEC DIP SPORTS MASSAGE, VCTC, MIGHT

01295 780610

07974 231571

Micks Sticks

Fire Lighting Wood For Sale

£2.50 per big bag

Call in anytime and ask for

Mick Canning, at

The Old Malt House,

Sibford Ferris

Tel: 01295 780321

C.A. Berger

painting & decorating
interiors & exteriors
residential & commercial

Mobile: 07875 212 315

Office Tel: 01295 780 140

Half Loads

Full Loads

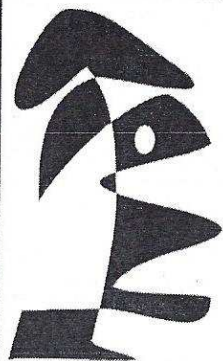
LOGS

Very Competitive Prices

Seasoned Hardwood Logs

Basil Page 01295 780215

Fencing Jobs Big or Small



Over 250 paintings by national and locally renowned artists available for purchase

A selection of craft stalls offering jewellery, pottery, books, needlework and much more

Excellent café refreshments available throughout the day

Children's Art Competition judged by Nigel Fletcher

Children's craft activity area

Saturday 6th and Sunday 7th March
10.30 am - 4.30 pm
Free admission

Art Exhibition and Craft Fair

General Enquiries (School Office) 01295 780270



Acre Ditch, Sibford Gower,
Banbury, OX15 5RW

The Firs Garage

All makes vehicle servicing

Competitive prices
Factory trained mechanics
MOT Parts Bodyshop Fuel
Large site with easy parking



Extensive range of new and used vehicles

Hook Norton, Oxon. OX15 5DD (1 mile North of Hook Norton village)

Tel: 01608 737349 / 737641

www.firs-garage.com

Family Business Established 1960



CHARITY CHAMPIONS

Big-hearted pupils at Sibford School have been putting their hearts into fund-raising. A hunger lunch, cake sale and non-uniform day have been among the many events at which pupils have been collecting charity cash for worthy causes including the Haiti

Earthquake Disaster; Guide Dogs for the Blind; Make a Wish Foundation and the Cumbrian Flood Appeal.

OPEN MORNINGS

Sibford School is holding two further Open Mornings to enable parents of prospective pupils to see what the school offers for children aged from 4 through to 18.

The Open Mornings, which include a talk by head, Michael Goodwin, and tours of the school, will take place on Friday March 12 and Friday April 30, starting at 10am.

The school is currently offering discounted places for children entering its early years classes in September 2010. To find out more contact Admissions Officer, Elspeth Gregory, on 01295 781203.

Serenity at Sibford

Beauty & Holistic Salon

01295 788463

* Guinot Skincare & Beauty Treatments * Waxing, Manicures & Pedicures * Sports, Remedial & Relaxation Massage * Botox & Skin Regeneration Treatments * NEW Pilates Studio now open Monthly Treatment Offers Pilates Taster Sessions Fri 22 & Sat 23 January!

Salon Open Day March 20th

Salon Closed Thursdays & Sundays

Gautherns Barn, Sibford Gower OX15 5RY

A CONCERT OF CHORAL MASTERS

The Warriner Choral Society

with the Akeman Chamber Orchestra and professional soloists will perform some of the richest sacred choral works on **Saturday 24th April at 7.30pm in the Church of St Peter and St Paul, Deddington,**

Together with orchestral pieces *Exultate Jubilate* (Mozart), *Concerto for two trumpets* (Vivaldi) and a suite from Handel, there will be the stirring interpretations of the *Te Deum* from Haydn and Mozart.

The concert, led by Musical Director Martin Quinn, will culminate in the hugely-popular

Gloria, by Vivaldi.

Refreshments during the evening,

Tickets £10 (£8c) are available from

Hamptons International Deddington, One Man Band Banbury, Bloxham Post Office, Jenny on 01295 721224, or on the door.

Oddjob

CARPENTRY • PLUMBING

ELECTRICS • HOUSEHOLD REPAIRS

**No need to call in four
different contractors ...Call me!**

For your building, DIY and home improvement needs
KITCHEN & BATHROOM FITTING • HEATING INSTALLATION
CARPENTRY • PLUMBING • ELECTRICS • SECURITY ... and more

DIY? Don't do it yourself ...Call me!

For a comprehensive and reliable local service,

Call HUGO SEELY on 01295 780355

FREE NO-OBLIGATION ESTIMATES

Trading in the Sibfords since 1992 - Excellent local references available

WELCOME TO SIBFORD

If you are a new resident of Sibford and have not yet received a copy of the "Welcome to Sibford" booklet, please telephone Ivor Hopkyns on 788367 (Gower or Burdrop) or Ann Bishop on 788188 (Ferris), and a copy will be delivered to you. The information will help to make you feel at home - by acquainting you with the services, schools, clubs and societies that are currently active in the villages.

We welcome Diane Disney and Nigel Yeadon who moved into Sibford Gower in January. Diane is employed by the Burford Tourist Office and Nigel is a solicitor in Banbury. They both know the area quite well having lived in Hook Norton and Oxhill recently.

The English Furniture Workshop

Beautiful Hand Painted
Antique Furniture

Amanda Ransom, Sibford Gower
Tel: 01295 780799 M: 07932 613663

www.englishfurnitureworkshop.co.uk

Bed & Breakfast

AGDON FARM

Nr Brailes

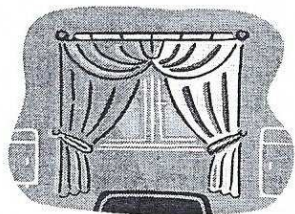
**Comfortable rooms
in old stone farmhouse**

**Tel: Maggie Cripps
01608 685226**

Curtains

(hand or machine sewn)

**Roman Blinds,
& Cushions**



Made to your requirements
Please call Carolyn on 01295 780695

BUILDING PLANS BUILDING REGS. SUBMISSIONS

Extensions • Loft conversions
Listed Buildings work • New build

D.R. BOVILL, B.A.
DESIGN AND PLANNING CONSULTANT

Private and Trade enquiries welcome
01295 788922 davidbovill@btinternet.com

ADVANCE NOTICE

Saturday 5th June 10am - 4pm St. Peter's Church, Hook Norton

Come and enjoy a creative day exploring the world and our place in it. This is a practical community workshop, so be prepared to get a bit messy! No previous experience of art or creative activity is needed, just an open mind and a willingness to get 'stuck in'. Age is immaterial. The day is free - and lunch / coffee / tea is included. Oh yes - wear old clothes or bring an apron. There are limited spaces, so do ring and let us know if you would like to come along.

Call; Cindy 01608 738299

Joyce 01295 720074

Judi 01608 730609

Rita 01608 737097

Miss 'T' Catering.

Catering for events such as:
Anniversaries, Weddings,
Christenings, Birthday parties,
Funerals

And private dinner parties.

~.~.~

Also available
Cutlery and Crockery Hire.
Contact Victoria Taylor on:

Mob: 07841 910037

Home: 01295 788924

Oxon Computers

Qualified PC Engineer

Danny, Company Owner

PC repair, maintenance & configuration

Tel: 01295 788766 Mobile: 07767 025752

Fax: 01295 788766

Email: Admin@oxoncomputers.co.uk

O
p
u
s

Alan Berks

SPECIALIST INSTALLER

Kitchens and Bathrooms

Natural and handmade

floor and wall tiles

Solid wood flooring

01295 780652

07816 592 124

Alan.berks@btopenworld.com

The Spinney

Sibford Gower, Banbury, Oxon, OX15

QUALITY FISH DIRECT
FROM



Proprietor: T.P.Martin

Tel: 07812 361853

GRIMSBY MARKET

Best fresh fish and shell fish to your
area direct from Grimsby on the
Lincolnshire coast

I'll be at Sibford Village Hall car park

EVERY MONDAY from

approximately 4pm till 5.30pm

kathartic

Support through Art for Katharine House Hospice

The 
Katharine
House
Hospice

An Exhibition and Auction of Original Art

Donated by local professional artists

With

Champagne, Canapes and Live Music

7.30pm, Saturday 24th April Tudor Hall School, Wykham Park, Banbury.

All money received will benefit nursing care - Please support us

Tickets available from John Marshall. Tel 780348



Sibford Horticultural Society

Our next meeting will be on Wednesday
10th March in the Village Hall starting at
8.00 pm. When Sue Byrne will be giving an illustrated talk about
Batsford Arboretum.

REIKI
HEALING FOR HUMANS
AND ANIMALS

LYN SIMMS
MASTER PRACTITIONER

01295 780 655

BIKE REPAIRS & SERVICING



General servicing
Repairs
Cleaning & maintenance
All makes and types of bike
Reasonable rates, speedy service

For all your bike repair needs, call: 01295 780355

FRANCIS MORDAUNT MCFHP MAFHP

*Member of the Open College of Foot Health Professionals
Member of the British Association of Foot Health Professionals*

FOOT HEALTH PROFESSIONAL

To enquire about a home visit please

telephone: 01295 730615

Professional Foot Care in Your Own Home

Richard Wallington
Builder

Block Paver Drives a Speciality
Also Extensions, Patios
Fencing etc.

High Quality Work, Free Estimates

01295 780705 07743 932545

(Sibford Gower) (Mobile)

Clothes Sale at Oxford Town Hall

5th & 6th March in aid of Macmillan Cancer Care

We are holding a quality nearly new and end of season clothes sale.

We are now collecting clothes so do sort out your wardrobes and kindly give us your donations. Michelle Boycot 780001

Loose Dogs and Sheep

Neighbourhood watch have been advised that, once again, we have had sheep being worried and attacked by loose dogs in the parish. With lambing underway and ewes being protective of their offspring there is more of a problem at this time of year. Please could all dog owners keep their dogs on a lead at all times when anywhere near livestock and not allow them to roam free. This should always be the case without having to be asked every year through the Sibford Scene.



Sarah Walker

Vivienne Nott

fresh flowers, fresh ideas

Gorgeous bouquets & arrangements

*Wedding bouquets, churches,
marquees and receptions*

*Flowers for supper parties,
house parties and celebrations*

Funerals and memorials

Contact :

Sarah : 01295 788595 Viv: 01608 652819



GODSWELL NATURAL THERAPY CENTRE

*Godswell Lodge, Church Street, Bloxham
Banbury, Oxon OX15 4ES*

**Acupuncture, Alexander Technique,
Aromatherapy, Art Therapy,
Chiropody, Chiropractic,
Counselling & Psychotherapy,
Cranio-sacral therapy, Homoeopathy,
NLP, Nutrition, Physiotherapy,
Reflexology, Remedial Massage,
Reiki, Spiritual Healing,
Shiatsu, Yoga.**

*Fully qualified professional therapists
For information Ring 01295 720347*

**FARMHOUSE
BED AND BREAKFAST
GRANGE FARM, SWAL-
CLIFFE**

*Enjoy warm hospitality & peaceful
surroundings in our comfortable
18th C Farmhouse*

CONTACT BARBARA TAYLOR



Contributions for the
April

Sibford Scene

to the Shop or Editor by

March 16th

HOLY TRINITY CHURCH NEWS

The Sibford Lent Austerity lunch was held at the home of David & Gilian Soden and was well attended. The other lunches being held in the Benefice are as follows: March 1st Swalcliffe (Grange Farm), March 8th Broughton (St Mary's House) March 16th Tadmarton (Village Hall), March 22nd Epwell (Gage Farm Barn), March 29th Shutford (Village Hall). These are all Mondays except Tadmarton (Tuesday) and all are at 12.30 pm. Lent Discussion Groups being held are on Sunday afternoons at 4pm with Rev John Tattersall at Abingdon House, Swalcliffe, Tuesdays mornings 10.30 to 12.00 at the home of John & Pat Salethorn, the Gables, Tadmarton and Thursdays 10.30am to 12.00 at 32 Danvers Close, Broughton, the home of Neil & Margaret Howarth. The theme on the Sunday groups is "Things Jesus carried; things Jesus said" and for the other two groups, Reflections on the Psalms. On Palm Sunday 28th March there will be the usual morning Eucharist preceded by a procession around the village. In the evening at 6pm at Bodicote there will be a presentation of Stainer's Crucifixion. On Good Friday 2nd April, there will be a choral service in Broughton Church at 7.00 pm. All of these services and house groups will be attended by Sibford parishioners and if anyone from Sibford would like a lift, would they please telephone 780980. During Lent there will be Holy Communion services on Tuesdays at 10.00 am in Tadmarton (BCP), Wednesdays at 9.30 am in Epwell (Common Worship) and Fridays at 7.30 am in Sibford (BCP). During Holy Week there will be Services of Matins at 7.30 am in Sibford each day (including Good Friday).

The Annual Parochial Church Meeting will be held in Church at 7.30 pm. on Wednesday 24th March. Two Churchwardens and eight PCC members will be elected and the

meeting will receive reports on the accounts, the PCC meetings held throughout the year and upon the fabric of the Church.

All church members are particularly asked to attend as it is probable that resolutions to amend the constitution of the Council and length of service of officers will be presented for consideration. There will also be a need for the appointment of a new Parish Treasurer as Cathy Cawley, who has done this job for so long and so well will be moving from the village later in the year.

23 members of the Society of Friends (Quakers), the Methodists, the Roman Catholic Church and the Anglicans of Holy Trinity "Sibford Churches Together", will be carrying out an envelope distribution and collection of the entire village during Christian Aid Week from May 9th to 15th.

Advance warning for the date of the Church Fete for your diaries is Saturday

WEB DESIGNER

Websites designed (*From £195*)

Web Hosting packages

Domain Names purchased

We can help you with
all your requirements



Planet Web Studio

Evolving your internet presence

www.planetwebstudio.com

Tel: 07740 404678

Church Services

Society of Friends		Sunday at 10.30 am
Methodist		Sunday at 11.00 am
Roman Catholic Mass	Wroxton	Sunday at 9.00 am
	Brailes	Sunday at 11.30 am
Baptist	Hook Norton	Sunday at 10.30 am

Church of England, Holy Trinity, Sibford Gower.

March

Mon 1st Evening Prayers 7.30 pm
Fri 5th and every Friday in Lent Holy Communion 7.30 am
Sun 7th Benefice Service 10 am
Sun 14th Holy Communion 8.00am & Mothering Sunday Family Service 10am
Sun 21st Holy Communion 9.30 am
Sun 28th Palm Sunday Service. 10.00am at Epwell
Mon 29th to Sat 3rd Holy Week. Matins 7.30am each day

April

Thu 1st Maundy Thursday Benefice Eucharist of the Last Supper 8.00pm
Fri 2nd Good Friday Activity Morning 9.30 - 12noon at the Primary School
Fri 2nd At the Cross, devotional service 1.30pm at Tadmarton
Fri 2nd Words and Music at
 Broughton Church 7.00pm
Sun 4th Easter Communion 9.30am



RED HORSE VALE LTD

All Types of Fuel, Coal, Smokeless, Gas,
Logs, Kindling, Barbecue Needs
Central Heating Oil, Oil Tanks & Coal Bunkers
Landscape & Building Materials, Garden Centre &
Garden Supplies. Farm & Country Sundries
Equestrian Products, Horse & Pet Feeds
Open: Monday - Saturday 8am - 5pm
Windmill Farm, Banbury Road (A422),
Oxhill, Warwickshire CV35 ORP
Tel: 01926642832
Fax: 01926 642 853

Cotswold Sketchbook

Receive a mini oil painting in your
inbôx each weekday ~
fresh off the easel, go to

www.cotswoldsketchbook.co.uk

and enter your email address.
You will get no spam and the
address will not be forwarded.

Paintings are for sale on a first
come basis

~

Sibford Bus Services

Cherwell Rural Dial-A-Ride Scheme

A mini bus with tail-lift to take **elderly or disabled people** and escort to Banbury (max fare £1.60) Door-to-Door service. Book at least one day in advance. Operates on Wednesdays & Thursdays. Phone 263777 for details. BCTA also takes bookings for groups of 8 or more on a weekly/monthly basis (Wednesdays & Thursdays) to and from Banbury. Tel; 263777

Stagecoach – Timetable commencing 31st May 2009
Mondays to Saturdays (No services on Sundays or Public Holidays)

Bus 50A. From Banbury towards Stratford-upon-Avon

Banbury, Bus Station	08.30	10.55	12.45	14.26	16.05	17.10	18.10
Sibford Ferris, Cross Roads	08.52	11.17	13.07	14.48	16.27	17.32	18.32
Sibford Gower, School	08.55	11.20	13.10	14.51	16.30	17.35	18.35
Shipston,	09.15	11.40	13.35	15.11	16.50	17.55	18.55
Stratford on Avon, Wood St.	09.40	12.09	14.04	15.40	17.19	18.24	19.24

Bus 50A. From Stratford-upon-Avon towards Banbury

NS

Stratford on Avon, Wood St	06.20	07.10	09.05	11.10	13.10	15.10	16.24
Sibford Gower, School	07.04	07.55	09.56	11.56	13.56	15/56	17.14
Sibford Ferris, Cross Roads	07.07	07.58	09.59	11.59	13.59	15.59	17.17
Banbury, Bus Station	07.28	08.25	10.21	12.21	14.21	16.21	17.39

NS = Not Saturdays

All buses will operate low floor wheelchair accessible vehicles.
For complete details of all the stops that are served by service 50A, timetables are obtainable from bus drivers and Sibford Stores & Post Office.

Fares:-

Sibford Ferris & Sibford Gower to Banbury:	Single £2.30 (Child£1.15)
	Return £4.40 (Child £2.20)
Sibford Ferris & Sibford Gower to Stratford:	Single £4.00 (Child £2.65)
	Return £6.00 (Child £4.00)
Seven days unlimited travel	£20.00
Twenty eight days unlimited travel	£76.00

Calendar of Events

March

- Tue 2nd Friendship Club Talk p7
Wed 3rd Mobile Library in the Sibfords (2.40 - 4.10pm)
Fri 5th / Sat 6th Charity Clothes Sale in Oxford p16
Sat 6th / Sun 7th Art Exhibition at the Primary School. P10
Tue 9th W.I. Poetry, Prose and Music. p5
Wed 10th Horticultural Society talk on Batsford Arbouretum p15
Fri 12th Sibford School Open Day p11
Sat 13th Salsa Oxford in the Village Hall. 8pm p8
Sun 14th Sibford Cricket Club AGM. p9
~~Thurs~~ ~~Mon~~ 18th Sibfords Society Domesday Presentation p6
Tue 16th Friendship Club Lunch p7
Wed 17th Police Drop In Session 2.30 - 3.30 at the Village Hall p9
Wed 17th Mobile Library in the Sibfords (2.40 - 4.10pm)
Sun 21st Sport Relief Mile p3
Wed 24th Annual Parochial Church Meeting, in Church at 7.30 pm.
Wed 24th Sibford School Community Reading Group 6.30pm
Thu 25th Sibford Gower Parish Council Meeting. Primary School 8pm
Wed 31st Mobile Library in the Sibfords (2.40 - 4.10pm)

April (part)

- Fri 2nd Easter Egg Hunt at the Village Hall p8
Sun 11th Whatever The Weather at Swalcliffe Church p4
Wed 14th Mobile Library in the Sibfords (2.40 - 4.10pm)
Sat 24th Art Exhibition and Auction p15
Sat 24th Warriner Choral Society at Deddington Church. P12
Wed 28th Mobile Library in the Sibfords (2.40 - 4.10pm)
Wed 28th Sibford School Community Reading Group 6.30pm
Fri 30th Sibford School Open Day p11

Cover picture. Looking across Mannings Hill

Sibford Scene

Editor; Adrian Lamb. Grounds Farm, Sibford Ferris. 780380

e-mail adrian.lamb@care4free.net

Treasurer; Timothy Wimbush, The Rectory, Acre Ditch, S.Gower
780555'

Advertising; Ivor Hopkyns, Elmridge Farmhouse, Sibford Gower,
Banbury, Oxon. OX15 5RT. Tel 788367