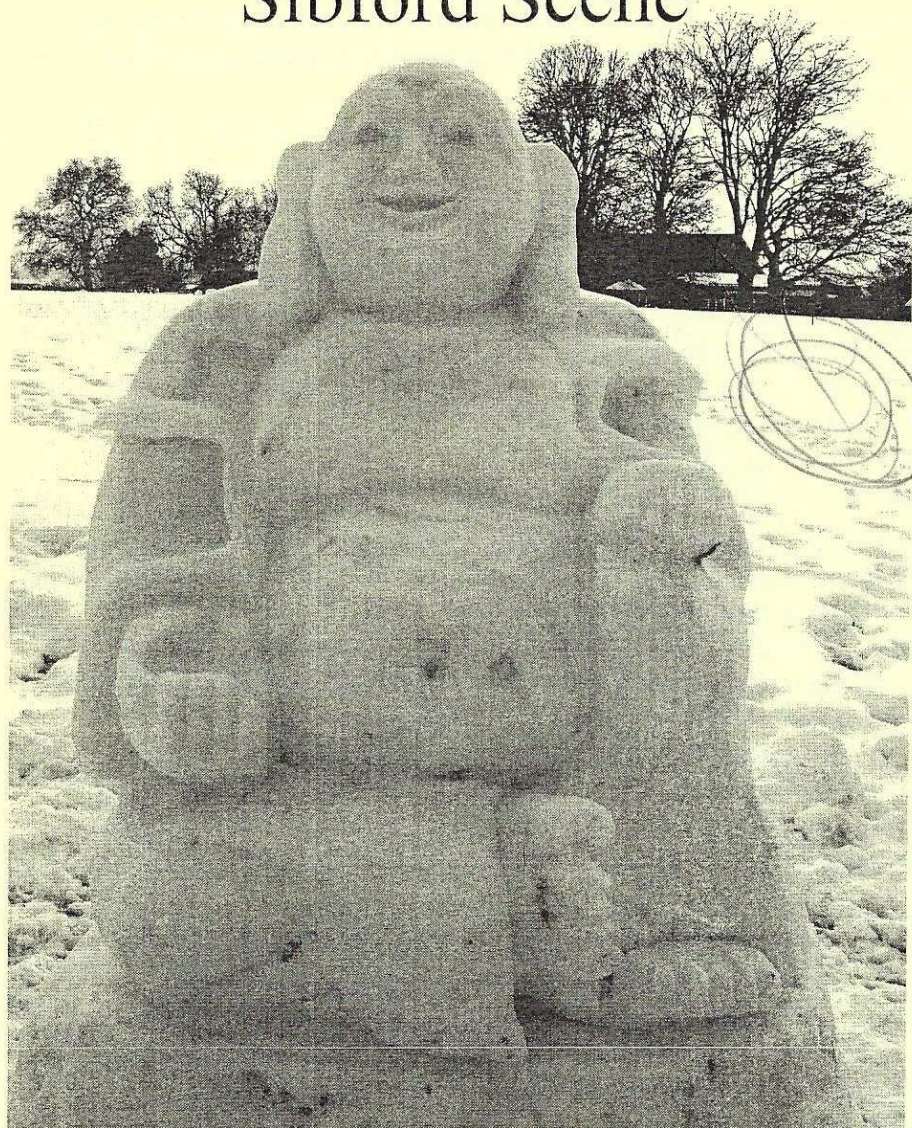


# Sibford Scene



February 2010

No. 319

1st The Sibfords Scout Group  
**RNLI Stroll On Sunday**  
Sunday 31st January

Starting between 2 & 3pm from the Village Hall

## Nature Notes

Nov 25th Our holly tree has now been virtually stripped of berries by the pigeons, redwings and blackbirds and they have now started on the yellow pyracantha.

Nov 29th The pyracantha that was loaded with berries only has a few difficult to reach ones left.

Dec 6th. Two people have told me that they have seen flocks of about 50 peewits which is good to hear. These would have been seen as very small flocks 30 years ago when they used to collect on the burned stubbles in their hundreds, sometimes thousands. Whether they were British birds or ones from the continent that smelled the smoke I don't know. Nor do I know what they found to eat there. Could it be that they found well cooked insects and grubs palatable.

Dec 19th. Very cold 17F (-8C) at 8 am.

Dec 20th. With a good variety of bird food on offer 19 different birds were attracted to a small garden in Sibford Ferris yesterday. The list included a brambling which I have not seen this winter and a pied wagtail which we seldom see in our garden.

Dec 23rd. As the cold spell continues the birds get used to our feeding routine and this morning blackbirds were piping from every bush as they waited to rush in when I put out the food and apples.

Jan 1st At 28.4 inches the 2009 rainfall was above average with July (4.23 inches) and November (4.90 inches) the wettest months and March (0.99 inches) and September (1.02 inches) the driest. After all the rain in July and most of August the drier spell in September and October came



**HOLMBY HOUSE**  
**SIBFORD FERRIS**  
A stunning setting for  
special celebrations

*From Buffets to Gourmet Dinners*

Formal dining for large groups  
Garden parties Business meetings  
Luxurious B & B

Self-catering accommodation

Tel/Fax: 01295 780104

[www.holmbyhouse.com](http://www.holmbyhouse.com)

[Sally.wass@btinternet.com](mailto:Sally.wass@btinternet.com)

**THE VILLAGE SHOP**  
**HOOK NORTON**

**\*NATIONAL LOTTERY\***

Grocery - Greengrocery - Bakery  
Wines - Spirits - Confectionary  
Newspapers - Magazines - Cards  
Video Rental - Bottled Gas

Open Monday to Friday

7 am to 8 pm

Saturday 8 am to 8 pm

Sunday 8 am to 6 pm

Telephone: 01608 737245

as a great relief giving arable farmers a chance to finish harvest and get autumn cultivations done.

Jan 3rd. Still very cold. Yesterday a female blackcap came to food that we put out and today a male and female came. This weather must be tough on birds like this that used to winter farther south.

Jan 4th. 17F (-8C) 2 fieldfares eating apples and some bullfinches that, as usual, ate stinging nettle seed rather than anything that we put out.

Jan 6th. Seven inches of snow over night but luckily no wind. With a strong wind it would have been enough to fill the roads hedge high. A female blackcap was trying to feed on the apples but was frightened off by more than 30 blackbirds, starlings and fieldfares that were squabbling over them.

Jan 7th. Really cold 14F (-10C) Radio report of -15C in Oxfordshire and -16.7C in Pershore. Masses of blackbirds waiting for food with a buzzard on a branch about 15 feet above them, which didn't seem to worry them at all.

Jan 9th. Scientists tell us that the Arctic ice is melting away far more quickly that predicted a few years ago but this cold spell is making people doubt that the world is really warming at all. It could be that

scientists are still underestimating

the speed of change and we are already starting to feel the predicted cooling of Britain due to the weakening of the gulf stream caused by the huge increase in fresh water entering the arctic ocean from the melting icecap and the glaciers of northern Russia.

Jan 10th. A woodpecker was drumming this morning in spite of the cold.

Jan 13th. Pretty well every day we find fresh badger and fox tracks on the lawn and today some interesting deer tracks showing all four feet landing close together and a 5 or 6 foot gap to the next group.

The muntjacs that we usually see



FOLLY FARM  
BACK PAIN  
CLINIC

**ACHES & PAINS?**

**I can help you!**

**Just visit your local clinic  
between Sibford & Swalcliffe**

Contact: **John McArthur**  
Back Pain Therapist  
B.Sc. & Dip (Chiropractic)

**Tel: 0845 862 4 862**  
(Local rate)

**Mob: 07740 404 678**

tend to creep around so this might have been a roe as the hoof marks were quite small.

Jan 14th. I expect that streams are monitored for the effect of road salt on the drinking water supplies and, I hope, for any damage to wildlife in the streams. This is a good chance to do it as we must have spread more salt than ever before. I did hear that more dead birds were being found by some roads so I hope they too are being checked to see whether they have ingested too much salt.

Jan 15th. The temperature is still at freezing point but it is raining this morning and forecast to get milder. We have had a very tame cock pheasant feeding throughout the cold spell but this morning two hen pheasants have come instead. The lowest temperature recorded during the cold spell was -8F (-22.3C) in Scotland.

---

### Bishops Blaize

The planning application for change of use having been withdrawn I have decided not to include the correspondence I have received (both pro and anti) on the subject in this issue (Ed)

Sibford Stores & Post Office  
Sibford Ferris  
OX15 5RG

Telephone 01295 788317 / 788348

### YOUR LOCAL CONVENIENCE STORE AND NEWSAGENT

We deliver newspapers and magazines 7 days a week to all the surrounding area. Place your regular order today, whether for 1 day a week or 7. Always a wide selection of magazines available, specialist titles available to order.

Chilled & Frozen foods, groceries, cigarettes, beers, wines and spirits, fresh fruit and vegetables, pet foods, household goods, toiletries & medical requisites and lots, lots more.....

National Lottery, Photocopying, fax service, dry cleaning & buffet lunches. We will also undertake your mailings for you, just speak with Terry or Judith.

Always an excellent selection of Hook Norton bottled beers in stock.

Telephone your grocery order for free local delivery.

### OPENING HOURS

Monday to Saturday 5.00am to 6.00pm

Sunday 5.00am to 1.00pm

PLEASE SUPPORT YOUR LOCAL POST OFFICE, THERE ARE LOTS OF PRODUCTS AND SERVICES AVAILABLE ON YOUR DOORSTEP



Women's  
Institute

## Sibford WI.

Because of heavy snow, the meeting due to be held on 12<sup>th</sup> January was unable to take place and, unfortunately, Stephen Griffith's presentation on 'The Mary Rose' was missed. However, he will now be rescheduled to come in the 2010/2011 programme.

The next meeting is on Tuesday, 9<sup>th</sup> February at 2pm in the Village Hall when Amanda Wood will be giving a talk on the Trans-Siberian Railway. The competition is for a picture or photograph of a train. Visitors will be very welcome.

Glennis Hardman

---

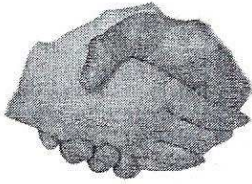
## Job hunting?

### **Cherwell's new guide tells you what you need to know**

Cherwell District Council, in association with its Job Club partners, has published an essential guide for Cherwell residents who are facing redundancy and looking for job. It offers advice on redundancy, money matters, job hunting, careers, and training. There are all the local contact details for organisations job seekers may need to get in touch with, including information on what to expect from the weekly Job Clubs in Banbury and Bicester. Cherwell residents can get a copy by phoning the Job Club helpline, 01295 221863 or visiting one of the Banbury or Bicester Job Clubs. It can also be downloaded from the Job Club page of Cherwell District Council's website, [www.cherwell.gov.uk](http://www.cherwell.gov.uk), by following the job club link on the homepage. Partners such as Banbury and Bicester Citizen's Advice Bureau also have copies of the guide, as well as Cherwell's one stop shops and the libraries. Cllr Norman Bolster, Cherwell's portfolio holder for economic development and estates, said: "This Essential Guide for our residents facing redundancy or looking for a job recognises that people want to have information together in one place.

That way they will know what advice and support they can expect, and where they can get it from locally. If you or someone you know could benefit from this guide then call the Job Club helpline today on 01295 221863."

A. Sabin  
**LOGS**  
Millbarn, Hook Norton  
Telephone 01295 788421  
Mobile 0781 7709044



## Friendship Club

What a start to the New Year!!!! We will, with hope, have met in January. So at the first meeting in February we shall have another " Little Box" from Woodstock Museum, so let all Members know. On the 16th February we have our annual Big Birthday Party for those who's big day is either in February or March. Our Treasurer will be Celebrating a certain BIG DAY. We will also sort out some trips for the year. Any Ideas?? Don't forget that we do not want to travel to long there and back to get to places. See you all on February 2nd.

Sibford Ferris Parish Council,

It has been brought to my action, from the drivers of the gritting lorries, that the run through the village, at times, is almost impossible to get through, especially by the shop due to inconsiderate parking. Unlike large agricultural vehicles, these gritting runs are normally carried out over night where its impracticable to get vehicles moved.

It is even more important in bad weather conditions, that the gritter is given room to negotiate this section of road, due to its size, and limited manoeuvrability. If the gritter cannot get through, the driver has no option but to drop this section of his route.

Please can you pass these comments on to the residents via the village magazine.

Kind regards.

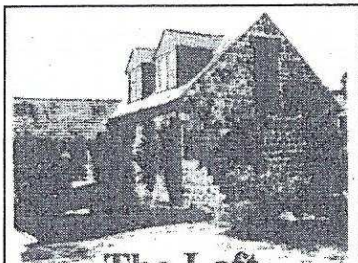
Simon Marsden Senior Technician Northern Area Office



The Firs, Hook Norton, Banbury, OX15 5DD  
Email: [enquiries@graphics-direct.co.uk](mailto:enquiries@graphics-direct.co.uk)  
Phone: 01608 730555 Fax: 01608 730271

**For all types of Vinyl Graphics & Signage.**

**Theresa Harper**  
DESIGNING PRODUCING & FITTING



### The Loft at Forge House

Visit Britain 4 ♦

*Bed & Breakfast  
or Self Catering Apartment  
with double bedroom*

**Carole Ralph**

The Loft at Forge House  
Old Forge Yard, Swalcliffe,  
Oxon OX15 5EH

Tel & Fax: 01295 788677

Email: [stuart@forgeyard.freeserve.co.uk](mailto:stuart@forgeyard.freeserve.co.uk)  
[http://mysite.wanadoo-members.co.uk/the\\_loft](http://mysite.wanadoo-members.co.uk/the_loft)

## Hello from Thailand

Well we arrived safely and had a few days in Bangkok. While we were there we found the Anglican Church and we hope to go to a service there on Christmas Day at 10.00am that will be 3.00am for you all.

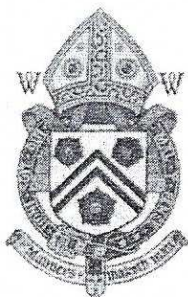
The Village has about 2000 houses in, 2 Temples, a Primary School, High School, small Cottage Hospital, lots of little shops or stalls, a market twice a week on Monday's and Wednesday's. If we want to use the internet I have to go to one of Ben's cousins to use their's as there is a waiting list for the internet, also for a telephone as they only have so many lines for the village. As we said it is like us in the 1950's. But the people are so friendly and all say a greeting when they pass us. On Tuesday we went to the Primary school and gave them some money for Scouts and Guides as it happens they are going on camp on the 28th-30th December and will use it for that.

We have already been to a Scout meeting and they were trying to put up tents without mallet's as they don't have any so we were using a stone or wood to bang pegs into the ground. Our Scout's would be mortified if they have to sleep in these as they were thin nylon tents without fly sheets and not very tall. All they had to

### DAMIAN AND DEBBIE WELCOME YOU TO THE WYKHAM ARMS

Temple Mill Road, Sibford Gower, Nr. Banbury OX15 5RX  
Tel: 01295 788808

Quiz Night  
on First Sunday of the Month  
'Hooky Night' Wednesday  
evening 6.00 - 7.30 pm  
(Beer, Lager, House Wine)  
Wi-Fi Hotspot Service  
Bar only Sunday Night, Closed  
All Day Monday



Fantastic Family Sunday  
Lunch  
(Booking advised)  
Freshly prepared  
local produce.  
Opening Times  
11.00 am - 3.00 pm  
6.00 pm - 11.30 pm

[www.wykhamarms.co.uk](http://www.wykhamarms.co.uk)

email: [info@wykhamarms.co.uk](mailto:info@wykhamarms.co.uk)

put them up with was 2 tall poles 4 smaller poles and a few tent pegs, but they got on with it with a smile, they don't know any knots so it was tie it up and hope it would not fall down. Both Robin and I helped where we could and they thought that was great. Then on Friday we went back to see them cooking rice, a practice run for camp. They had no idea about lighting fires and if it was not going they would just keep on feeding it with paper. We managed to get 3 or 4 going and they were pleased, eventually they managed to cook their rice and eggs and eat it. I have decided we must have pyromaniacs back in Sibford as the Scouts all manage to have great big fire's just to cook some sausages, of course we were asked to try some it was alright as rice goes, we then stayed for lunch with the Teachers and we will be going back next week to see them.

The ground for the house has been made higher as the canal is near where we will have the house built. We are just waiting for Ben to find an architect to design the houses and then it will be all system's go. I will send some photos later on.

Ann & Robin Spicer 11 01 2010

I would like to thank everyone who kindly gave me so much help through the harsh weather, which was very much appreciated.

Muriel Chandler

**WOODSIDE GARDEN  
MAINTENANCE**

Border Maintenance

Grass Cutting

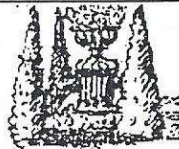
Hedge Cutting

All Your Garden Needs Etc

BTEC and NCH Qualified

Call Matt Simms

07976 644 509 or 01295 780 655



**BED & BREAKFAST**

Buttslade House Cottage (Sibford Gower)  
offers comfortable acomodation with  
en suite bathroom overlooking a tranquil

English country garden.

Contact Diana Thompson

(01295) 788818

or [janthompson50@hotmail.com](mailto:janthompson50@hotmail.com)

[www.buttsladehouse.co.uk](http://www.buttsladehouse.co.uk)



## Village Hall News

SALSA OXFORD return for a Carnival Evening in Sibford Village Hall on Saturday 13th March at 8-00pm. Tickets are £8-00 to include a welcome latin cocktail to get you in the mood to salsa the night away! Tickets from Joan 01295 780410, Muriel 780025 or Anita 788557.

At the present our BOOKING SECRETARY is Anita Spencer on 01295 788557.

More details of future events will be in the next Sibford Scene.

152 players joined in the Village Hall Lottery Game and the first two draws have taken place in November and December. Winners of £43 each were John Marshall and Ivor Hopkyns; 2nd prizes of £21 each went to Kate Wood and Bill Crabtree; 3rd of £12 each went to Muriel Chandler and Phil Edmunds. The next draw will take place at the Cosmic Sausages Concert on January 30th in the Village Hall. Many thanks to everyone for joining in the fun and this has made £921 for Village Hall funds.

### Sports & Remedial

#### Massage

Aid sore, aching  
muscles and  
injuries

Victoria Smith

ITEC DIP SPORTS MASSAGE, VCTC, MIGHT  
01295 780610  
07974 231571

### Micks Sticks

Fire Lighting Wood For Sale  
£2.50 per big bag  
Call in anytime and ask for  
Mick Canning, at  
The Old Malt House,  
Sibford Ferris  
Tel; 01295 780321

### C.A. Berger

painting & decorating  
interiors & exteriors  
residential & commercial

Mobile: 07875 212 315  
Office Tel: 01295 780 140

Half Loads

Full Loads

### LOGS

Very Competitive Prices  
Seasoned Hardwood Logs  
Basil Page 01295 780215  
Fencing Jobs Big or Small

## The Sibfords' Farewell Present to Terry & Judith

Donations poured in from all of us who were sad to see Terry & Judith leave the shop. The grand total came to £918. The box on the shop counter alone received £275. Thanks go to Ramesh, the new owner, for allowing us to put a collection box in the shop for two weeks, and to Penny Perris for collating all the various donations and adding it all up. Thanks also to the Sibford Scene delivery teams, who posted donations envelopes through your letter boxes.

When Terry & Judith left the shop, they were presented with a formal notification from Nigel Fletcher, saying he had been commissioned to produce a framed oil painting of any local view they might select, at the season of their choice. This will account for slightly under half the money collected.

Terry & Judith were very touched to learn the extent of your collective generosity & are now mulling over various ideas on what to buy with the other half. Hopefully we will all be given the opportunity to view Nigel's painting when it is completed. How Terry & Judith spend the second half of their leaving fund will be communicated via the Sibford Scene. Watch this space.

# **The Firs Garage**

**All makes vehicle servicing**

**Competitive prices**  
**Factory trained mechanics**  
**MOT Parts Bodyshop Fuel**  
**Large site with easy parking**



**Extensive range of new and used vehicles**

**Hook Norton, Oxon. OX15 5DD (1 mile North of Hook Norton village)**

**Tel: 01608 737349 / 737641**

**[www.firs-garage.com](http://www.firs-garage.com)**

**Family Business Established 1960**

## Sibford Ferris Parish Council Meeting

held in Sports Hall classroom, Sibford School

on Wednesday, 25<sup>th</sup> November 2009

All Councillors were present at the meeting, and the second half of the meeting was attended by Cllr George Reynolds.

### **Matters arising from the previous meeting:-**

**MUGA** - The Chairman explained the difficulties that had been encountered with trying to obtain further funding for the MUGA project at Sibford School. Difficulties had appeared when approaching Grant Funders, who are not prepared to offer monies, as the land is owned by the Sibford School and there is no lease contract in place between the school and SFPC for the MUGA use currently.

There are also issues surrounding the access agreement to the site which need to be resolved. It was agreed to try and involve the local community more in the fundraising aspect of the project.

**Burial Ground** - Ongoing communications between Gower and Ferris PCs are hoping to ensure a swift resolve to the outstanding maintenance issues.

**Cotswold Close Play Area** - The Chairman advised that regular Play Area checks were being undertaken, and confirmed that there was no remedial action required to any of the Play Area equipment from the checks.

**Parish Plans** - After detailed discussion, the Clerk was asked to contact Oxford Rural Planning to obtain further updated guidelines relating to production of a Parish Plan and also copies of local Parish Plans that would be relevant to S. Ferris, in embarking on production of it's own Parish Plan.

**Parish Governance Toolkit and Complaints procedure** – SFPC was advised that a revised and updated Parish Governance Toolkit had been reissued from Cherwell District Council. SFPC understood the importance of reviewing the document. It was agreed to immediately adopt the Complaints procedure for SFPC.

**Planning** - Councillors expressed concern at the inconsistencies currently seen in the planning approvals coming through from Cherwell District Planning. Recent examples were discussed, and it was agreed that SFPC would write to Cherwell District Planning to express their concerns.

**Footpath/Highway Issues** - Various matters were discussed concerning pathway maintenance. These included several issues requiring householders to remedy overgrown shrubs/ bushes affecting access to the pathways.

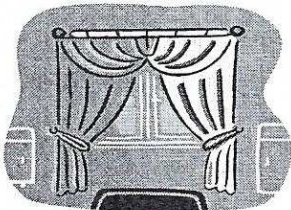
**Date of Next Meeting** – agreed as Wednesday 20<sup>th</sup> January, 2010 The meeting closed at 10.10pm.

*Note – the next PC meeting date has since been changed to 27<sup>th</sup> January, 2010.*

## Curtains

(hand or machine sewn)

## Roman Blinds, & Cushions



*Made to your requirements*  
Please call Carolyn on 01295 780695



## Domesday 2010!

Our survey of the Sibford villages is underway. The groups and organisations who meet in the village should have received the first questionnaire which we hope they will complete and return to Richard Hartree by the end of March. If, by any chance, your group has not received one please let us know so you can be included. We are now preparing the anonymous householder survey which will be delivered to every household via the April edition of the Sibford Scene. To explain the aims of this survey we invite all villagers to an open meeting to be held in the Village Hall on Thursday 18 March at 8.30pm. This will follow on directly after our Society AGM which, members are reminded, starts at 8pm. Do come along, hear about the survey and look at some archive material which will be on display.

In our archive we have the survey carried out by Rev Edward Stevens in 1877 which we are using as the base for our comparative data in 2010. In the more recent past quite detailed records have been published about our village community. Kelly's Directory for Oxfordshire dated 1899 summarises details separately for the Gower with Burdrop and Sibford Ferris. The principal landowners then in the Gower were New College, Oxford meaning that most of the farmers listed in the commercial section were tenant farmers. The Gower comprised 1758 acres with an assessable value of £2492 for the population of 420. In the Ferris, three gentlemen are listed as the principal landowners for the 1007 acres with a rateable value of £1634: the population in 1899 in the Ferris was 276. The list of commercial businesses and services makes interesting reading supporting the self contained nature of the villages to meet the needs of all residents at that time.

Richard Laycock Routh LRCPEdin.,LFP &S.Glas is listed as resident in the Ferris and being a surgeon & medical officer & public vaccinator, Swalcliffe district, Banbury Union. William Gaydon kept the Wykham Arms and Edward Woods, the Bishop Blaize .

Please help us to create a record of our villages now for future generations. Please contact Maureen Hicks (780259) if you would like to know more or help in any way.

### The English Furniture Workshop

Beautiful Hand Painted  
Antique Furniture

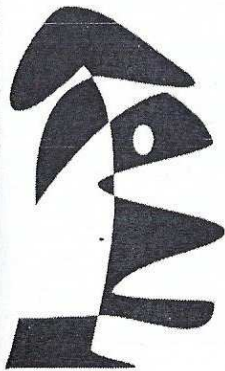
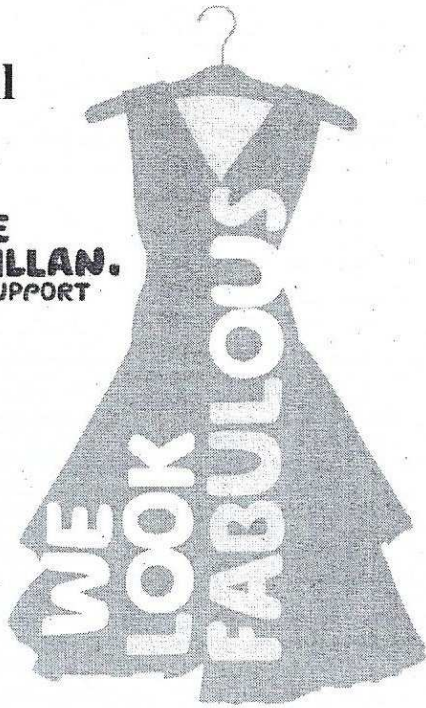
Amanda Ransom, Sibford Gower  
Tel: 01295 780799 M: 07932 613663

[www.englishfurniture  
workshop.co.uk](http://www.englishfurnitureworkshop.co.uk)

# Clothes Sale Oxford Town Hall 5th & 6th March

**WE ARE  
MACMILLAN.  
CANCER SUPPORT**

We are holding a quality nearly new and end of season clothes sale. We are now collecting clothes so do sort out your wardrobes and kindly give us your donations.  
Michelle Boycot 780001



Over 250 paintings by national and locally renowned artists available for purchase

A selection of craft stalls offering jewellery, pottery, books, needlework and much more

Excellent café refreshments available throughout the day

Warriner Partnership Schools Children's Art Exhibition and Competition judged by Nigel Slater

Children's craft activity area

**Saturday 6th and Sunday 7th March**  
**10.30 am - 4.30 pm**  
**Free admission**

## Art Exhibition and Craft Fair



General Enquiries (School Office) 01295 780270

Acre Ditch, Sibford Gower,  
Banbury, OX15 5RW



**History comes to life** Year 8 pupils at Sibford School near Banbury enjoyed a history lesson with a difference when the Time Traveller came to visit. Otherwise known as Dave Lord, the Time Traveller brought the Civil War to life allowing pupils to dress in period costume, handle arte-

facts and weapons and learn about the hardships, battles and diseases of 17th Century Britain. Pictured left to right are: Behshad Shafaatian, Nino Winlaw, Time Traveller Dave Lord, Imogen Creed, Will Champion and Amie Roberts.

### **SCHOOL TO HOST COMMUNITY READING GROUP**

Sibford School near Banbury is to host a monthly community reading group. The first book to be put under the spotlight will be 'Year of Wonders' by Geraldine Brook. Described by Woman's Hour presenter, Jenni Murray, as 'one of the best novels I've ever clapped eyes on', Year of Wonders is based in part on the true story of Eyam, a rural Derbyshire village whose rector persuaded residents to voluntarily quarantine themselves during the plague. The reading group is being coordinated



by Miranda Leonard who also runs the school's life drawing classes. "My past experience of reading groups is that they provide an excellent discipline not only to read more but also to read more widely," said Miranda. "My only qualification as coordinator is that I'm a keen reader, but I hope that we'll get a good core of people and have some good, lively and fun discussions." The reading group will take place between 6.30pm and 7.30pm on the fourth Wednesday of each month commencing February 24, and will meet in the reception area of the school's Mackenzie Thorpe Art Gallery. Open to all, each session will cost £3 to cover refreshments, with any profits going towards the Nchima Trust, a small charity that supports health and education projects in Malawi. Further information on the reading group is available from Sibford School Community Development Officer, Ali Bromhall, on 01295 781216 or email [abromhall@sibfordschool.co.uk](mailto:abromhall@sibfordschool.co.uk)

1st The Sibfords Scout Group  
**RNLI Stroll On Sunday**

Sunday 31st January Starting between 2 & 3pm from the Village Hall

The Cubs and Beavers will be organising a stroll around the footpaths of the villages on Sunday afternoon to raise funds for the Royal National Lifeboat Institution. This is part of the RNLI national fund-raising weekend. A Family walk of about 2 miles along the local footpaths where each family will have a card to punch where ever an orienteering punch is found. A contribution (£1 per person suggested) to the fund is requested in order to take part and there will be RNLI information and a Lifeboat Station Raffle, along with Tea Coffee and Squash in the Hall afterwards.

The Cubs have been making and decorating Lifeboat collecting boxes which we hope will be filled for us on Sunday with your loose change

We hope to see as many people as possible and raise even more money than we managed last year, for the RNLI.

**Serenity at Sibford**

**Beauty & Holistic Salon**

**01295 788463**

**\* Guinot Skincare & Beauty Treatments \* Waxing, Manicures & Pedicures \* Sports, Remedial & Relaxation Massage \* Botox & Skin Regeneration Treatments \* NEW Pilates Studio now open Monthly Treatment Offers Pilates Taster Sessions Fri 22 & Sat 23 January!**

**Salon Open Day March 20th**

**Salon Closed Thursdays & Sundays**

**Gautherns Barn, Sibford Gower OX15 5RY**

## Happy and Sad

It is impossible to tell you how we felt on 25 November 2009. our last day at Sibford Stores and Post Office, we had such a roller coaster ride of emotions. By the time you read this we'll have been 'retired' for 2 months and still wondering just how we managed to spend so many hours in Sibford every week; we now understand why so many people told us that we wouldn't have time to do everything once we'd finished!

We would like to thank you for the numerous cards and presents we received. The sentiments expressed by so many were really moving and we hadn't appreciated the affection in which we were held. Our decision to sell the business wasn't an easy one but all good things must come to an end and we felt that an injection of new blood and energy was needed to take the stores onto the next level if it was to survive.

We have so many happy memories of our time in Sibford and it would be unfair to recall any particular events with the one exception of July 2002 when so many of our friends and customers joined us on the occasion of our wedding, no one could have asked for a such a terrific reminder of one of the most important days of our lives.

We hope to remain involved in the village albeit in a much lesser way and will no doubt renew many acquaintances in the coming months

Terry & Judith

# Oddjob

**CARPENTRY  
PLUMBING  
ELECTRICS  
HEATING INSTALLATION  
KITCHEN & BATHROOM FITTING  
BUILDING WORKS  
SECURITY**

**FOR A COMPREHENSIVE AND RELIABLE  
LOCAL SERVICE**

**HUGO SEELY 01295 780355**

**FREE NO-OBLIGATION ESTIMATES**

**No job too large**

**Excellent local references available**

*Ann Woolgrove*  
FABRICS, CURTAINS & SOFT FURNISHINGS

Personalised design service and consultancy in your own home.

Beautiful bespoke Curtains, Roman & Roller Blinds & Soft Furnishings, handmade to the highest standard.

Advice on every kind of Fabric from numerous suppliers.

Stylish complimentary Cushions & Loose Covers.

Re-upholstery service.

Custom made Bedspreads & Headboards.

New Sofas & Chairs

Tel/Fax: 01295 788145

Email: [info@annwoolgrove.com](mailto:info@annwoolgrove.com)  
[www.annwoolgrove.com](http://www.annwoolgrove.com)



## WELCOME TO SIBFORD

If you are a new resident of Sibford and have not yet received a copy of the "Welcome to Sibford" booklet, please telephone Pauleen Inns on 780702(Gower or Burdrop) or Ann Bishop on 788188 (Ferris), and a copy will be delivered to you. The information will help to make you feel at home - by acquainting you with the services, schools, clubs and societies that are currently active in the villages.

We welcome Harriet and Ian Mountford who have moved into High Meadow from Drayton just before Christmas. Ian works in the medical services industry in Witney. Two year old Isabella has already joined the pre-school group. They have two dogs, Amber and Poppy and enjoy walking around the many public footpaths in the area. The Peacock family moved from Tysoe into Barn Close, Burdrop. Sarah, Nick, Harriet, Cecilily and Monty. Nick is a barrister, Sarah is a full time Mum and Harriet attends Shenington school. Cecilily attends the local play school. Monty is a Spaniel who likes plenty of walks.

Anthony (Tony) Tierney moved into Buttslade Bungalow, Sibford Gower, just before Christmas - he originates from West Hartlepool

and is a Historian. His hobbies include painting and music. Molly his ginger cat keeps him company.

### Toby Seely



General servicing  
Repairs  
Cleaning & maintenance  
Reasonable rates  
Speedy service

For all your bike needs. call 780355

### Zoe Andrews

Registered Childminder  
Daytime and wrap-around school childcare

Vacancies for children 6 months to 9 years  
- local drop off/pick up - term time -  
school holidays - great facilities - large  
garden - pets - strictly no smoking home  
Please call me on 01295 780174, or email  
at [zoeandrews@btconnect.com](mailto:zoeandrews@btconnect.com)

### BUILDING PLANS BUILDING REGS. SUBMISSIONS

Extensions • Loft conversions  
Listed Buildings work • New build

D.R. BOVILL, B.A.  
DESIGN AND PLANNING CONSULTANT

Private and Trade enquiries welcome  
01295 788922 [davidbovill@btinternet.com](mailto:davidbovill@btinternet.com)

## Great response to food recycling

Cherwell's new food waste recycling scheme has proven very popular with the residents of Sibford Ferris and Sibford Gower. The scheme, launched in October, has already diverted 32 per cent of cooked and uncooked food from the village's green bins. And once everyone becomes accustomed to putting their food waste in the brown bin, this figure will rise. Cherwell's portfolio holder for environment, recreation and health, Councillor George Reynolds, said: "It is surprising just how much food we throw away, even those of us with a frugal nature." "There are many items which can now go in the brown bin including bones, plate scrapings and shells, it's just a matter of getting used to the change. "I would ask everyone to stop and think for a second before they throw anything away – 'could I avoid some of that going to landfill?' "Not only will this be better for the environment but recycling food waste costs about half as much as paying landfill taxes." Each home in the village should have received a kitchen caddy – a container to store food waste before transferring it from the kitchen to the brown bin. They came with a complimentary roll of compostable liners which can also go in with the food and garden waste. These should not be substituted with plastic liners but they are not essential; the caddy can be lined with newspaper - which can also go in the brown bin - or be left unlined. Those wishing to buy some more liners can pick them up at all the major supermarkets in Banbury and the Co-op in High Street, Bloxham. Anyone with questions about the scheme should visit [www.cherwell.gov.uk/foodwaste](http://www.cherwell.gov.uk/foodwaste) or call 01295 221940.

Craig Forsyth Communications officer

### Miss 'T' Catering.

Catering for events such as:  
Anniversaries, Weddings,  
Christenings, Birthday parties,  
Funerals

And private dinner parties.

~.~.~

Also available

Cutlery and Crockery Hire.

Contact Victoria Taylor on:

Mob: 07841 910037

Home: 01295 788924

O  
P  
U  
S

### Alan Berks

SPECIALIST INSTALLER

Kitchens and Bathrooms  
Natural and handmade  
floor and wall tiles  
Solid wood flooring

01295 780652

07816 592 124

[Alan.berks@btopenworld.com](mailto:Alan.berks@btopenworld.com)

The Spinney

Sibford Gower, Banbury, Oxon, OX15

### Oxon Computers

Qualified PC Engineer

Danny, Company Owner

PC repair, maintenance & configura-  
tion

Tel: 01295 788766 Mobile: 07767 025752

Fax: 01295 788766

Email: [Admin@oxoncomputers.co.uk](mailto:Admin@oxoncomputers.co.uk)



### QUALITY FISH DIRECT FROM

Proprietor: T.P.Martin

Tel: 07812 361853

GRIMSBY MARKET

Best fresh fish and shell fish to your  
area direct from Grimsby on the  
Lincolnshire coast

I'll be at Sibford Village Hall car park

EVERY MONDAY from

approximately 4pm till 5.30pm

## Sibford Gower Parish Council Meeting – Thursday, 21<sup>st</sup> January 2010

**Clerk's Report:** The Clerk had advised the residents who had expressed an interest in having allotments that the Parish Council had been unsuccessful in its search for suitable land. During the week ended 21<sup>st</sup> Nov 2009, after a considerable delay by the bus company, the timetables went in to make the matter of the bus stops complete. He referred to a letter that had been received from the Oxfordshire Rural Community Council. Some years ago, the ORCC and Oxfordshire County Council established a network of Parish Transport Representatives (PTRs) to give communities a means of voicing the needs and concerns about local transport. Additional PTRs are now sought to speak for Parishes such as ours and the Parish Council is requested to be involved in this. At this Meeting, it was decided that the way forward would be to place a suitable item in an issue of the Sibford Scene to ascertain what interest may be generated. The Clerk is to liaise with Sibford Ferris Parish Council to establish whether it would like to make the subject a joint one bearing in mind that the bus route runs through both Parishes. The Parish Council Election will take place this year and the relevant information will be received from Cherwell District Council in due course. However, it has been established that the date is 6<sup>th</sup> May. In a Parish Council election year, the Annual Parish Council Meeting must take place on, or within fourteen days, the day on which the elected Councillors take office (ie when election results are known). Therefore, the date of the Annual Parish Council Meeting must be between 6<sup>th</sup> and 20<sup>th</sup> May. At the March Parish Council Meeting the actual date will be decided. A provisional date of 17<sup>th</sup> April, subject to details to come from the District Council, has been set for this year's Litterblitz. **Precept for the Financial Year 2010/2011:** After consideration of the Council's current financial position, the expenditure envisaged during the coming financial year with sufficient monies for contingency purposes, it was agreed that the precept request be set at £5,000 (down £1,000 on the figure for the current financial year). **Planning Matters:** Since the previous Meeting, the Council had considered four planning applications and received five planning decisions. The District Council had advised that the application to change the use of the Bishop Blaize from closed public house to dwelling had been withdrawn. **Highway Matters:** The Parish Council had received many complaints regarding the condition

**REIKI**  
HEALING FOR HUMANS  
AND ANIMALS

**LYN SIMMS**  
MASTER PRACTITIONER

**01295 780 655**



**Jay 'T' Disco's**  
Music for any occasion  
LOCAL DJ Contact Jason on  
PHONE:  
07949336625  
EMAIL:  
**JASONWT@HOTMAIL.CO.UK**

**FRANCIS MORDAUNT MCFHP MAFHP**

*Member of the Open College of Foot Health Professionals  
Member of the British Association of Foot Health Professionals*

**FOOT HEALTH PROFESSIONAL**

To enquire about a home visit please

telephone: 01295 730615

Professional Foot Care in Your Own Home

**Richard Wallington**  
Builder

Block Paver Drives a Speciality  
Also Extensions, Patios  
Fencing etc.

High Quality Work, Free Estimates

01295 780705 07743 932545  
(Sibford Gower) (Mobile)

of the roads during the recent snowy and icy weather. Pound Lane, Main Street leading on to Acre Ditch had been completely ignored by Oxfordshire Highways despite the fact that they form part of a bus route and are the means of access to the school, church and the village hall. Many residents had contacted Oxfordshire Highways as had the Clerk who was told that Oxfordshire Highways had considered that the gritting of Hawkes Lane was sufficient to allow the residents of the Parish to access the Shipston/Banbury road (B4035). The Clerk subsequently made contact with Oxfordshire Highways to stress that this certainly was not the case. At the Meeting, the Clerk was instructed to write to Oxfordshire Highways setting out what the Parish Council considers to be absolutely the minimum requirement for snow clearance in the event of future snow and ice situations ie Pound Lane, Main Street/Acre Ditch and Hawkes Lane. He was also instructed to write to Mr Tony Baldry MP seeking his help in ensuring that County Councils are financially able to deal with treating roads where passable conditions are a priority for local residents. Turning to the matter of grit bins, a request had been received from a local resident that a bin be installed in The Colony and Cllr Peter Abbott felt that one should be installed on Burdrop Hill. Oxfordshire Highways are prepared to install bins (at a cost to the Parish Council) and attend to subsequent maintenance and filling. The Clerk was instructed to liaise with the authority in this regard. The Clerk reported that an email had been received from Mr Geoff Reeve (Highway Inspector, Oxfordshire Highways) advising that on 18<sup>th</sup> January he visited the Parish, noted and issued defects for potholes recently caused by the recent snow and ice. Remedial work is, therefore, expected. **Footpath Matters:** A review of the condition of footpaths in Main Street/Acre Ditch is due following complaints received some six months ago regarding the resurfacing work that had been carried out. This will have the Parish Council's attention. The Clerk was instructed to speak with an official of the Friends Meeting House to seek co-operation by pruning the hedges which overhang the adjacent footpath. **Churchyard & Burial Ground:** Contained within the Precept request for the coming financial year is a sum sufficient to cover the cost of the maintenance of that part of the Churchyard for which the Parish Council has accepted responsibility and its share (with Sibford Ferris PC) of maintaining the Burial Ground. **Public Participation:** The member of the public present at the Meeting raised the matter of the condition of footpaths being damaged by the tread of horses. The Clerk was instructed to speak with the County's Rights of Way Officer to establish whether riders may access footpaths as opposed to bridleways. **Any Other Business:** No matters were raised.

**Date of Next Meeting:** The next Meeting of the Parish Council will be on Thursday, 25<sup>th</sup> March starting at 8pm in the usual venue – The Staff Room of Sibford Gower Endowed Primary School. There being no further business to discuss, the Chairman thanked all present for attending and closed the Meeting at 9.25pm.

## LOCAL HONEY

USUALLY AVAILABLE

*Bill Wealsby*

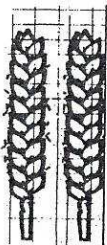
Tel:01295 788405

Swarms of bees wanted

### FARMHOUSE

**BED AND BREAKFAST  
GRANGE FARM, SWAL-  
CLIFFE**

*Enjoy warm hospitality & peaceful  
surroundings in our comfortable  
18th C Farmhouse*  
**CONTACT BARBARA TAYLOR**



Contributions for the  
March

Sibford Scene

to the Shop or Editor by  
February 16th

## HOLY TRINITY CHURCH NEWS

The Christmas services proved to be very popular events with the service on Christmas morning taken by Bishop James Johnson, formerly Bishop of St Helena, who now lives nearby. Bishop James is an old friend who has taken our Christmas services on many previous occasions. It was good to see him with us again but we were sorry to miss his wife who was this year unable to come with him.

Many thanks are due to the numerous contributors to the Church Mission Society whose boxes and donations were counted just before Christmas. This year we counted an amazing £919.14 including Gift Aid tax relief, by far the largest sum we have received over the years

This is advance warning that "Sibford Churches Together", being various members of the Society of Friends (Quakers), the Methodists, the Roman Catholic Church and the Anglicans of Holy Trinity will be carrying out an envelope collection for Christian Aid during Christian Aid Week from May 9<sup>th</sup> to 15<sup>th</sup>. This is possibly the first time that such a collection has been made, certainly for a very long time, and we have already 20 of the 23 volunteers needed to cover all the houses in Burdrop, Gower and Ferris. We have already received an exploratory visit from Catherine Loy, one of the members of the Oxford office team, and Catherine will be speaking at a joint Benefice PCC meeting to be held in Tadmarton on January 27<sup>th</sup>. She will also be speaking at the morning Benefice Service in Sibford on May 2<sup>nd</sup>. Catherine is an experienced member of the team and has seen at first hand conditions in various parts of Africa and the work being done there locally in trying to improve some terrible human conditions.

There will be a meeting of the Parochial Church Council on Thursday 24<sup>th</sup> February at Woodway Farm on the kind invitation of Sue Wilson and there will be numerous items under consideration. These will include proposals for Ann Spicer's successor as Churchwarden, where suggested names may still be submitted; regulations concerning length of service for PCC membership and officers and reports from Churchwarden, Secretary and Treasurer. If any members of the Parish ie any village members, have matters to raise they should be submitted to the PCC

Secretary Peter Hardman in good time before the meeting.

*Sarah Walker*

*Vivienne Nott*

*fresh flowers, fresh ideas*

*Gorgeous bouquets & arrangements*

*Wedding bouquets, churches,*

*marquees and receptions*

*Flowers for supper parties,*

*house parties and celebrations*

*Funerals and memorials*

*Contact :*

*Sarah :01295 788595 Viv:01608 652819*

**Bed & Breakfast**

**AGDON FARM**

**Nr Brailes**

**Comfortable rooms  
in old stone farmhouse**

**Tel: Maggie Cripps**

**01608 685226**

# Church Services

Society of Friends		Sunday at 10.30 am
Methodist		Sunday at 11.00 am
Roman Catholic Mass	Wroxton	Sunday at 9.00 am
	Brailes	Sunday at 11.30 am
Baptist	Hook Norton	Sunday at 10.30 am

Church of England, Holy Trinity, Sibford Gower.

February

Mon 1st Evening Prayers 7.30 pm

Tues 2nd Candlemas - Benefice Service at Swalcliffe 8 pm

Sun 7th Benefice Service at Tadmarton 10 am

Sun 14th Family Service 10 am

Wed 17th Ash Wednesday Service 8 pm

Fri 19th and all Fridays in Lent Holy Communion 7.30 am

Sun 21st Holy Communion 9.30 am

Fri 26th Holy Communion 7.30 am

Sun 28th Holy Communion 9.30 am

March

Mon 1st Evening Prayers 7.30 pm

Fri 5th Holy Communion 7.30 am

Sun 7th Benefice Service 10 am



## RED HORSE VALE LTD

All Types of Fuel, Coal, Smokeless, Gas,  
Logs, Kindling, Barbecue Needs  
Central Heating Oil, Oil Tanks & Coal Bunkers  
Landscape & Building Materials, Garden Centre &  
Garden Supplies. Farm & Country Sundries  
Equestrian Products, Horse & Pet Feeds  
Open: Monday - Saturday 8am - 5pm  
Windmill Farm, Banbury Road (A422),  
Oxhill, Warwickshire CV35 ORP  
Tel: 01926642832  
Fax: 01926 642 853

## Cotswold Sketchbook

Receive a mini oil painting in your  
inbox each weekday ~  
fresh off the easel, go to

[www.cotswoldsketchbook.co.uk](http://www.cotswoldsketchbook.co.uk)

and enter your email address.  
You will get no spam and the  
address will not be forwarded.

Paintings are for sale on a first  
come basis

~

# Sibford Bus Services

## Cherwell Rural Dial-A-Ride Scheme

A mini bus with tail-lift to take **elderly or disabled people** and escort to Banbury (max fare £1.60) Door-to-Door service. Book at least one day in advance. Operates on Wednesdays & Thursdays. Phone 263777 for details. BCTA also takes bookings for groups of 8 or more on a weekly/monthly basis (Wednesdays & Thursdays) to and from Banbury. Tel; 263777

Stagecoach – Timetable commencing 31<sup>st</sup> May 2009  
Mondays to Saturdays (No services on Sundays or Public Holidays)

### Bus 50A. From Banbury towards Stratford-upon-Avon

Banbury, Bus Station	08.30	10.55	12.45	14.26	16.05	17.10	18.10
Sibford Ferris, Cross Roads	08.52	11.17	13.07	14.48	16.27	17.32	18.32
Sibford Gower, School	08.55	11.20	13.10	14.51	16.30	17.35	18.35
Shipston,	09.15	11.40	13.35	15.11	16.50	17.55	18.55
Stratford on Avon, Wood St.	09.40	12.09	14.04	15.40	17.19	18.24	19.24

### Bus 50A. From Stratford-upon-Avon towards Banbury

NS

Stratford on Avon, Wood St	06.20	07.10	09.05	11.10	13.10	15.10	16.24
Sibford Gower, School	07.04	07.55	09.56	11.56	13.56	15/56	17.14
Sibford Ferris, Cross Roads	07.07	07.58	09.59	11.59	13.59	15.59	17.17
Banbury, Bus Station	07.28	08.25	10.21	12.21	14.21	16.21	17.39

NS = Not Saturdays

All buses will operate low floor wheelchair accessible vehicles.

For complete details of all the stops that are served by service 50A, timetables are obtainable from bus drivers and Sibford Stores & Post Office.

Fares:-

Sibford Ferris & Sibford Gower to Banbury: Single £2.30 (Child£1.15)

Return £4.40 (Child £2.20)

Sibford Ferris & Sibford Gower to Stratford: Single £4.00 (Child £2.65)

Return £6.00 (Child £4.00)

Seven days unlimited travel £20.00

Twenty eight days unlimited travel £76.00

# Calendar of Events

## January

- Sat 30th Cosmic Sausages at the Village Hall  
Sun 31st Stroll On Sunday from 2pm, Village Hall p15

## February

- Tue 2nd Friendship Club "Little Boxes" p6  
Wed 3rd Mobile Library in the Sibfords (2.40 - 4.10pm)  
Tue 9th W.I. Meeting. Trans Siberian Railway. 2pm Village Hall p5  
Tue 16th Friendship Club Big Birthday Party p6  
Wed 17th Mobile Library in the Sibfords (2.40 - 4.10pm)

## March (part)

- Wed 3rd Mobile Library in the Sibfords (2.40 - 4.10pm)  
Fri 5th / Sat 6th Charity Clothes Sale in Oxford p13  
Sat 6th / Sun 7th Art Exhibition at the Primary School. p13  
Sat 13th Salsa Oxford in the Village Hall. 8pm p13  
Wed 17th Mobile Library in the Sibfords (2.40 - 4.10pm)  
Thu 25th Sibford Gower Parish Concil Meeting

Cover picture. Snow Carving in the Piece

### Sibford Scene

Editor; Adrian Lamb. Grounds Farm, Sibford Ferris. 780380  
e-mail [adrian.lamb@care4free.net](mailto:adrian.lamb@care4free.net)

Treasurer; Timothy Wimbush, The Rectory, Acre Ditch, S.Gower  
780555

Advertising; Ivor Hopkyns, Elmridge Farmhouse, Sibford Gower,  
Banbury, Oxon. OX15 5RT. Tel 788367