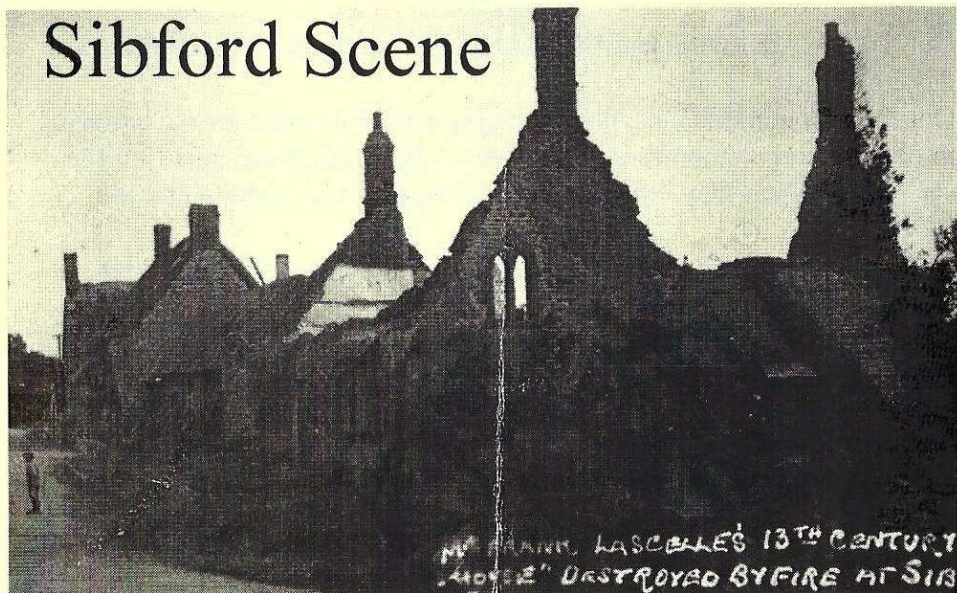


Sibford Scene



December 2009 & January 2010

No. 318

Holy Trinity Church Christmas Bazaar

Saturday 28th November 2.30 pm in the Village Hall

Sibford School Christmas Fayre

Friday 4th December 2.30 - 5.30pm

Methodist Chapel Coffee Morning

Saturday 5th December 10.00 - 12 noon

Village Hall Film Night

Saturday 12th December 5.00pm for 6pm Film

Carol Services

Sunday 13th December in the Chapel at 11.00 am

Friday 18th December in the Church 7.00 pm

Sunday 20th December Christingle Service in Church 4.30pm

Village Hall Family Quiz

Saturday 16th January 5.00 pm

Primary School Jumble Sale

Saturday 23rd January 10.00 - 12 noon

Nature Notes

Oct. 20th My daughter had 15 goldfinches feeding at her bird table today

Oct. 31st Conditions must have been just right last night for the badgers to collect mud on their feet as they have left muddy tracks marking the six places where they cross the road between Little London and the Elm.

Nov. 6th Several redwings and a few blackbirds have already started eating berries from our holly tree.

Nov. 10th I understand that a dipper has been seen recently within or close to our parish boundary. About 60 years ago one nested under a bridge between our villages. I did not see the nest and don't know which bridge but it was recorded by Arnold Darlington who then taught science at Sibford School.

Nov. 12th Pigeons have now joined the redwings and blackbirds so our massive crop of holly berries will soon be gone. They have already cleared the top part of the tree.

Nov. 15th A late flower spike of the parasitic ivy broomrape has recently appeared under a tree in our garden. As well as being later, it is also bigger, than the ones we have seen there over the last few years. It is about 11 inches tall and looks as though it might develop further yet.

Nov. 16th September and October were pretty dry months enabling farmers to catch up with the field work but November is very different with 2.75 inches of rain in the first 2 weeks and the promise of more to come. There are not many holly berries left now. I think it will be a job to find one by next week.



HOLMBY HOUSE

SIBFORD FERRIS

**A stunning setting for
special celebrations**

From Buffets to Gourmet Dinners

Formal dining for large groups

Garden parties Business meetings

Luxurious B & B

Self-catering accommodation

Tel/Fax: 01295 780104

www.holmbyhouse.com

Sally.wass@btinternet.com

THE VILLAGE SHOP HOOK NORTON

NATIONAL LOTTERY

Grocery - Greengrocery - Bakery

Wines - Spirits - Confectionary

Newspapers - Magazines - Cards

Video Rental - Bottled Gas

Open Monday to Friday

7 am to 8 pm

Saturday 8 am to 8 pm

Sunday 8 am to 6 pm

Telephone: 01608 737245

VILLAGE HALL NEWS

FILM NIGHT

On Wednesday 25th November we are showing "ERIN BROKOVICH". The story stars Julia Roberts as a single mother who takes on a large USA water company she suspects of dumping poisonous substances. Graded 15. Tickets £1 at the door. 7-30pm for film at 8pm. Bar available and ice creams.

On Saturday 12th December we will show "POLAR EXPRESS". This is an enchanting computer generated film with a Christmas theme with "voice-over" by Tom Hanks. Great entertainment for the whole family. Doors open at 5pm for 6pm start. Drinks and ice creams available. Tickets £1 for everyone – pay on the door.

FUTURE EVENTS

On January 16th 2010, we are hosting a Family Quiz, devised by one of our local families. Teams of ALL ages are welcome to enter, maximum of 6 people per team, £10 per team. Start 5pm. Licensed bar available and refreshments. Do enter your team in good time.

THE COSMIC SAUSAGES Many of you will remember this fantastic band from the past. We are hosting them again on January 30th 2010, at 7-30pm. You will be amazed by their energy and humour, as well as their musical talent.

Licensed bar available. Tickets will be available from December at £10 each. On the door tickets will be £12 each. Contact 780373 for more details.

SALSA NIGHT! On March 13th 2010, we welcome SALSA OXFORD to help us learn and dance the Salsa in one evening. Those of you who came last time will remember what fun you had! Do not worry – there is no need to bring a partner. More details in the next Sibford Scene.

EASTER EGG HUNT On Good Friday 2nd April 2010, you can trek the village in search of clues and chocolate! Details will be given in the New Year.

VILLAGE FAYRE 2010 This will be held on June 19th.

Our booking secretary is Anne Spackman on 01295 780734.

CHRISTMAS MARKET Sadly we have decided to cancel the market on December 6th as there seem to be several already planned in the village around the same time.

We would welcome some input from the villagers. If you have any suggestions as to what you would like see improved in the hall do contact Joan on 01295 780410.

At the time of going to press we have 147 players in the Village Hall Lottery Game and the first draw will take place in early December. If anyone is still interested in joining in, please ring Muriel on 780025. ONLY £12 per year and £6 goes back into the monthly prize draw.

We are pleased to say that the Oxfordshire Community Foundation, under the Grassroots Grass Fund, awarded us £1,500 to replace the old track, fittings and curtains on the Hall stage, which are now in operation and, for the first time for many years, can easily be opened by the cord on the side of the stage.

We are now in the process of obtaining a grant to fit double glazing in the large hall and next March will be sending in a grant to replace the crockery in the Hall.

Sibford Stores & Post Office

Sibford Ferris

OX15 5RG

Telephone 01295 788317 / 788348

YOUR LOCAL CONVENIENCE STORE AND NEWSAGENT

We deliver newspapers and magazines 7 days a week to all the surrounding area. Place your regular order today, whether for 1 day a week or 7. Always a wide selection of magazines available, specialist titles available to order.

Chilled & Frozen foods, groceries, cigarettes, beers, wines and spirits, fresh fruit and vegetables, pet foods, household goods, toiletries & medical requisites and lots, lots more.....

National Lottery, Photocopying, fax service, dry cleaning & buffet lunches. We will also undertake your mailings for you, just speak with Terry or Judith.

Always an excellent selection of Hook Norton bottled beers in stock.

Telephone your grocery order for free local delivery.

OPENING HOURS

Monday to Saturday 5.00am to 6.00pm

Sunday 5.00am to 1.00pm

PLEASE SUPPORT YOUR LOCAL POST OFFICE, THERE ARE LOTS OF PRODUCTS AND SERVICES AVAILABLE ON YOUR DOORSTEP



Women's
Institute

Sibford WI. Meeting - 10th November 2009

A good attendance of members was welcomed by President Glennis Hardman. The recent Group Meeting at Bloxham was discussed and unanimously agreed by those who attended that it had been an excellent evening with brilliant entertainment by 'Our Flossie' whose singing and dancing talents were greatly enjoyed.

Christmas is coming! and today our festive season got off to a good start with a demonstration by Deborah Page from Barn Side Farms, Wardington of how to make Christmas wreaths and table arrangements. She had brought along with her small sprays of spruce, bunches of ivy, holly and cuttings of variegated euonymus because, whenever possible, Deborah prefers to work with natural materials gathered from her garden and the countryside. Using florist wire she showed us how to fix and layer these on a circular metal frame to build up a dense, sweet-smelling base for a Christmas wreath. She then added decorations such as fir cones, chillies and cinnamon sticks and her final touch was to add a bow of creamy yellow wired ribbon.

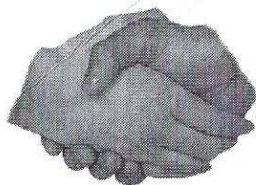
The second example of her work was a symmetrical shape built upon an oasis base. Once more spruce and various other pieces of evergreen were used but this time the decorations were more colourful – such as bright red holly berries, gold sprayed cones and a large tartan ribbon bow, which cleverly appeared to run through the complete piece from top to bottom. This decoration was suitable for hanging on a door or, when laid flat and with the insertion of a candle in the middle, could be converted to a centrepiece for the Christmas table! So don't be too surprised by the number of denuded spruce trees and holly bushes to be seen throughout The Sibfords this year! Glennis gave an enthusiastic vote of thanks

Tea and tasty cakes were served by Gaynor Harper-Tarr and Val Powell. The competition for a hand crafted Christmas card was judged by our speaker and she awarded first to Rosemary Neal with joint second to Margaret Gardiner and Jane Martin.

Tuesday, 8th December will be our Christmas Party with time to socialise and a beetle drive to add to the fun. Members are asked to bring a plate of finger food and a wrapped gift plus a seasonal table centre for the competition.

Margaret Gardiner

A. Sabin
LOGS
Millbarn, Hook Norton
Telephone 01295 788421
Mobile 0781 7709044



Friendship Club IT'S CHRISTMAS

The Chairman and Committee wish everyone in the Friendship Club A Very Happy Christmas and a Bright New Year. By the time you read this we will have had our Festive lunch, which I hope everyone enjoyed. We now look forward to the Christmas tea which is on December 15th. Please would members be at the Hall by 3 pm.

The 1st Meeting in 2010 is on Jan 4th. We shall be in the Village Hall. At that meeting the Annual Tea Rota will be passed around, so please decide when you wish to do the teas.

Sibford Methodist Chapel

**December 5th Coffee Morning and
Christmas Stalls in the
Chapel 10am - 12 noon**

December 13th

Carol Service 11.00am

**All are welcome to these
events**

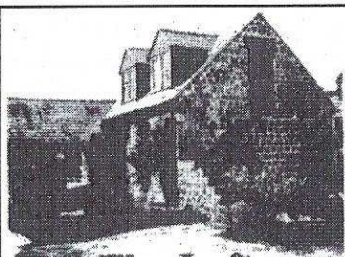


The Firs, Hook Norton, Banbury. OX15 5DD
Email: enquiries@graphics-direct.co.uk
Phone: 01608 730555 Fax: 01608 730271

For all types of Vinyl Graphics & Signage.

Theresa Harper

DESIGNING PRODUCING & FITTING



The Loft at Forge House

Visit Britain 4 ♦

*Bed & Breakfast
or Self Catering Apartment
with double bedroom*

Carole Ralph

**The Loft at Forge House
Old Forge Yard, Swalcliffe,
Oxon OX15 5EH**

Tel & Fax: 01295 788677

Email: stuart@forgeyard.freeserve.co.uk
http://mysite.wanadoo-members.co.uk/the_loft

This is a Sad Farewell but also the beginning of an exciting new phase in our lives. We have thoroughly enjoyed serving you for the past eleven years but feel the time has arrived when the stores need an injection of youth and vitality to take them through into the next decade, and Ramesh has plenty of both of these qualities.

We shall certainly miss the many friends we have made over the years as running a village stores and Post Office is far more than a job and more a way of life. Whilst we're sure we will soon adjust to not getting up whilst others are only just thinking of going to bed the loss of the constant stream of familiar faces will take far longer.

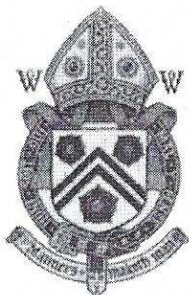
Thank you to each and every one of you for your custom, help and friendship over the time we have been in Sibford. Our success in the stores was only possible because of the support given to us by so many. We know how much you value the many benefits which are given to any village by retaining their shop and Post Office and hope that you will continue to give Ramesh the same support to enable him to provide the services that are so vital today to life in a rural community.

Terry & Judith Byrne

DAMIAN AND DEBBIE WELCOME YOU TO
THE WYKHAM ARMS

Temple Mill Road, Sibford Gower, Nr. Banbury OX15 5RX
Tel: 01295 788808

Quiz Night
on First Sunday of the Month
'Hooky Night' Wednesday
evening 6.00 - 7.30 pm
(Beer, Lager, House Wine)
Wi-Fi Hotspot Service
Bar only Sunday Night, Closed
All Day Monday



Fantastic Family Sunday
Lunch
(Booking advised)
Freshly prepared
local produce.
Opening Times
11.00 am - 3.00 pm
6.00 pm - 11.30 pm

www.wyksamarms.co.uk

email: info@wyksamarms.co.uk

Sibford Gower Parish Council Meeting

Tuesday, 17th November 2009

The Meeting was attended by all five Parish Councillors, County & District Councillor George Reynolds, five local residents and the Clerk. Various matters were discussed including **Allotments:** Regrettably, land owned by the District Council, which it was hoped might be used proved not to be so as the District Council was not willing to allow it. No other offers of land were forthcoming. Residents who had expressed a desire for allotments will be advised of the situation. **Forthcoming resignation of Chairman:** With the departure to Thailand in early December, Cllr Spicer tended his resignation as Chairman. The offer of Vice Chairman Martin Layer to fill the position was unanimously accepted as was the appointment of Cllr Peter Abbott as Vice Chairman. The Council's position will be reviewed in May 2010 at the time of the next Parish Council elections. Robin Spicer has been a Parish Councillor since 26th September 1986 (Chairman since 17th May 2006) and his presence at Meetings and involvement in the community will be greatly missed. **Clerk's Report:** The Clerk referred to his attendance, with Cllrs Spicer and Abbott at the Parish Liaison Meeting held in Bodicote House on 11th November. Minutes of the meeting, when received, will be passed to the members of the Parish Council. The Council had received information and posters (subsequently displayed) concerning fly tipping. Included were forms to report to the District Council any fly tipping incidents. These are available should they be required. Also received prior to the Meeting was a letter from the District Council 'Operation of the Ethical Framework – Customer Survey'. This was completed at the Meeting.

Review of the Asset Register, Risks and Councillors' Interests: A review took place. **Planning Matters:** Since the previous Meeting, eight planning applications had been considered and seven planning decisions received. **Highway Matters:** The attention of the Parish Council had been drawn to the adverse impact of parked cars (usually those of visitors to the Surgery) on the grass verge opposite the Doctors' Surgery. In addition to this, the wall of

WOODSIDE GARDEN

MAINTENANCE

Border Maintenance

Grass Cutting

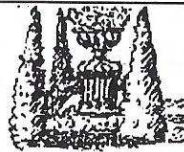
Hedge Cutting

All Your Garden Needs Etc

BTEC and NCH Qualified

Call Matt Simms

07976 644 509 or 01295 780 655



BED & BREAKFAST

Buttslade House Cottage (Sibford Gower)

offers comfortable accommodation with
en suite bathroom overlooking a tranquil
English country garden.

Contact Diana Thompson

(01295) 788818

or janthompson50@hotmail.com

www.buttsladehouse.co.uk

the adjacent property is starting to be affected. Previously, damage to the road nearby had been caused by heavy vehicles and remedial work is promised by Oxfordshire Highways. In view of this latest situation, the Clerk had a site meeting on 5th November with an Oxfordshire Highways Inspector who recommended that two protective posts be installed at a cost to the Parish Council. At this Council Meeting, this solution was challenged in that the corrective work (and the cost thereof) should be the duty totally of Oxfordshire Highways as the road and the verge are its responsibilities as, indeed, would be any damage to the adjacent wall. The Clerk was instructed to take the matter forward with Oxfordshire Highways. **Footpath Matters:** The Clerk advised the Meeting that, as requested by the Parish Council, the kerbs in High Meadow had been dropped at two points to allow wheelchair access. Regarding the wall at part of the footpath between Backside Lane and Main Street where some stones are dislodged, a site visit was made by the Rights of Way Officer (OCC) who considered that the matter was not serious but that the owners of the property involved should be aware of their responsibility. The Clerk had advised them of this. At a previous Parish Council Meeting, local residents Lesley and Andrew Bishop offered to walk the Parish footpaths and highlight any problems. At tonight's Meeting they were present having previously handed to the Clerk a very detailed list and photographs highlighting where remedial work is needed. The Councillors expressed their thanks and gratitude for the time and effort involved and the Clerk was instructed to enter into dialogue with the Rights of Way Officer (OCC). **Burial Ground:** Ongoing discussion took place regarding its maintenance and dialogue with the Ferris PC will continue. **Public Participation:** County and District Cllr George Reynolds spoke briefly of the Cherwell Rural Area Integration Transport and Land Use Study stage two report. In January, the Core Strategy will be looked at by the District Council and information will be passed down to Parish Councils. **Date of next Meeting:** Thursday, 21st January 2010 starting at 8pm in the usual venue – the Staff Room, Sibford Gower Endowed Primary School. **There being no further business to discuss, the Chairman thanked all present for attending and closed the Meeting at 10pm.**

C.A. Berger

painting & decorating
interiors & exteriors
residential & commercial

Mobile: 07875 212 315
Office Tel: 01295 780 140

Half Loads

Full

LOGS

Very Competitive Prices
Seasoned Hardwood Logs
Basil Page 01295 780215
Fencing Jobs Big or Small

BOXING DAY CHARITY FOOTBALL MATCH

All Welcome!

Fancy walking off that Christmas Day excess? Want a little fresh air to get your appetite for Boxing Day lunch? Like to support local charity? Want to watch a bunch of amateur footballers make a complete hash of it trying to play in the snow & frost?

If the answers to at least the first three above are "yes" or "maybe", then disregard number four (and treat it as a bonus) and turn out to watch your two local footballing giants battle it out for Seasonal Supremacy! Again!

SIBFORD GENTLEMEN F.C. vs SWALCLIFFE COTTAGERS F.C.

Swalcliffe Park School Ground, Boxing Day 11.00am k.o.

Previous years' games have been great fun & very entertaining
(see <http://www.swalcliffe-cottagers.com>) - let's hope this year will be similar

Team subs, comedy referee fines & kind donations from the spectators (with only minor tin-rattling) will be donated to local charities *Katharine House Hospice & the Frank Wise School*. Last year's total was £300 & we'd like to get even more this year.. it's up to you & your generosity so thank-you in advance!

The Firs Garage

All makes vehicle servicing

**Competitive prices
Factory trained mechanics
MOT Parts Bodyshop Fuel
Large site with easy parking**



Extensive range of new and used vehicles

Hook Norton, Oxon. OX15 5DD (1 mile North of Hook Norton village)

Tel: 01608 737349 / 737641

www.firs-garage.com

Family Business Established 1960

THE 40TH NEW YORK CITY MARATHON **SUNDAY, THE 1ST NOVEMBER 2009**

The New York Times, Monday, the 2nd November recorded the following data:-

DAVID BENNETT

Finishing Place 22263 Age 66 Time 4H 20M 38S

JONATHAN BENNETT

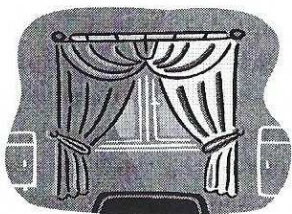
Finishing Place 15024 Age 34 Time 3H 59M 41S

A wonderful experience for David & Jonathan as they completed the 26 miles 385 yards, crossing five bridges, in front of an estimated 3 million spectators. The course passes through the 5 New York boroughs, Staten Island, Brooklyn, Queens, The Bronx and Manhattan, finishing in Central Park. Over 42,000 people took part in the event representing all 50 states and in excess of 100 countries. It is staggering to report that when the race started in 1970 there were just 127 competitors !.

As one of several thousand people raising funds for charity, we hope to have raised £1,250.00 for the Air Ambulance Service and the Sir Bobby Robson Foundation. May we take this opportunity to thank the many people in the villages and the local area for their generous support to our efforts.

The Air Ambulance Service costs £1.4 million a year to operate and is supported entirely through voluntary donations. The service is airborne in 45 seconds to respond to the needs of seriously ill or injured patients.

**Curtains,
Roman Blinds
(Hand or Machine Sewn)
and Cushions**



Made to your requirements

**Please call Carolyn on 01295 780695
Sibford Gower.**

Our links with North East England are well known and we are most grateful to our friends in that area for their contribution too ; we wore our "black & white striped shirts" to acknowledge a true soccer legend who battled cancer on 5 separate occasions. The foundation based at the Freeman Hospital, Newcastle upon Tyne, close to where David was born, focuses on the early detection and treatment of cancer and the clinical trials of new drugs that will eventually beat the disease.

**MANY THANKS TO
YOU ALL ONCE AGAIN**

The Cotswolds were shown in a new light when Alan Winterburn talked to those attending our November meeting. His illustrated talk fully demonstrated the need to look above our heads and around corners when visiting well known Cotswold villages such as Stow in the Wold, Moreton and Burford. Many small village Churches have a wealth of unusual Monuments and connections

with important historical events. The tradition of people publicly confessing their wrong doings at a Weeping Cross is one we might, in some cases like to see continue! We all benefited from Alan's considerable research into the stories behind the plaques and monuments by which we are surrounded.

The Sibfords Society Annual Social Evening will be held on Thursday, 28th January and invitations will be delivered after Christmas. There will as usual be no meeting in December or February but look out for more information regarding our AGM on the 18th March 2010.

We wish all our Members and supporters a Happy Christmas and look forward to seeing you all in the New Year.

Domesday 2010!

Last month we outlined the Society's plan to record what happens in the Sibfords during the course of a year to provide a look at everyday life in a north Oxfordshire village in the 21st century. During December we plan to contact all the organisations who meet or worship in our community and hope that they will co-operate with us to provide a record of their membership and programmes including a photographic record of events and activities during 2010.

In 1877 the vicar of Sibford, Rev Edward Stevens (Frank Lascelles' father) personally conducted a door to door survey of all households in the Gower, Burdrop and the Ferris. He recorded the gender, age groups and occupation of the head of the household. His findings were tabulated and give us a complete insight into the social history of the village at that time. It makes interesting reading, although many of the descriptions and classifications have little bearing to life in the village today. We have included the table which Rev Edward Stevens prepared and his personal contribution to life in the Sibfords, through the records in his diaries, are part of our treasured archive material.

The population recorded in Beesley's History of Banbury in 1841 was 821. The total population of the villages in 1877 was recorded by Stevens as 615 – this was raised to 692 when the 7 staff and 70 boarding pupils at Sibford Quaker School were included. Sibford's village children were able to go to the village school endowed by the Town Estate Charity in 1540. Formal education was rare in rural communities and the school log books, recorded by former headmasters, tell of totally different schooldays to those enjoyed by pupils today. School provision ended at 14 years of age or as soon as employment was found in the final year. Some were apprenticed to trades in the village, some found work on the local farms or entered service.

Once completed, we plan to submit the record to the Oxfordshire Records Office and keep a copy for our archive. If you would like to help and be more directly involved please contact Maureen Hicks, (780259) or any member of the Sibfords' Society.

Population of Sibford 1877 (Personal census of Rev. Stevens)

Occupation

Gower

Burdrop

Ferris

Totals

	A	B	A	B	A	B	A	B	TOTAL
Vicar	1	4					1	4	5
Surgeon					1	3	1	3	4
Lawyer	1	5					1	5	6
School Master	1	1			1	5	2	6	8
Surveyor					1	3	1	3	4
Bailiff	1	1					1	1	2
Independent	5	11	3	3	2	2	10	16	26
Farmer	10	35	4	14	5	21	19	70	89
Baker	1				2	6	3	6	9
Butcher	1	1			1	3	2	4	6
Blacksmith	1	2			1	1	2	3	5
Carpenter	1	2	1	2	1	2	3	6	9
Dairyman	3	3			1	1	4	4	8
Mason	1	4	2	4			3	8	11
Miller	1	5					1	5	6
Master Plumber	1	2					1	2	3
Painter	3	11					3	11	14
Tailor					1	1	1	1	2
Thatcher	1	2					1	2	3
Shoemaker	3	10					3	10	13
Sawyer	1	4	1	4			2	8	10
Carrier	2	4	1	3	1	2	4	9	13
Machinist	1	3					1	3	4
Seamstress	1						1		1
Clock cleaner	1	1					1	1	2
Inn Keeper	2	5	1	1			3	6	9
Beershop	1	1	1	1	1	1	3	3	6
Shopkeeper	1	1	1	1	1	1	3	3	6
Bread seller	1	3					1	3	4
Coal seller	1						1		1
Roadman	1	3			1	1	2	4	6
Molecatcher	1	1					1	1	2
Servant	1	5			2	1	3	6	9
Widow	4	6	6	15	1	1	11	22	33
Separated from Husband	1		1	2			2	2	4
Labourer	24	60	15	47	22	66	61	173	234
Pauper	4	1	5	11	5	7	14	19	33
Lunatic	1	4					1	4	5
TOTAL	85	201	42	108	51	128	178	473	615

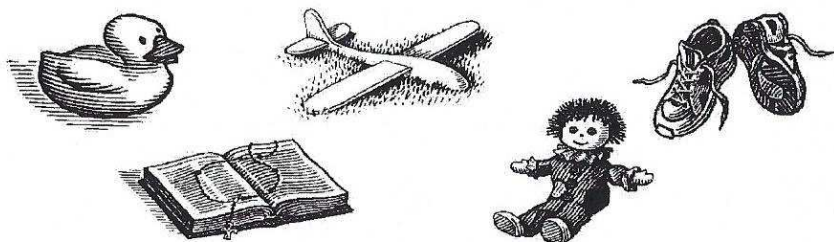
In addition the Quaker School had 7 staff and 70 pupils

A = Householder B = Additional people in household

Jumble Sale

Sibford Gower Primary School

23rd January
10.00am - 12.00pm



Donations gratefully received at school by 9.30am on the day or Friday 22nd from 3pm.

Sibford Gower Primary School PTA

John Loggins Charity

The trustees of the Charity will soon be meeting and the annual distribution of funds will be considered. As in previous years, those people, older or younger, who feel themselves in need of the financial assistance offered, please write to The Trustees, c/o The Rectory, Sibford Gower by December 14th. All applications will be considered in complete confidence by the trustees and distribution will be carried out in time for Christmas.

Timothy Wimbush. (Rector)

WELCOME TO SIBFORD

If you are a new resident of Sibford and have not yet received a copy of the "Welcome to Sibford" booklet, please telephone Pauleen Inns on 780702(Gower or Burdrop) or Ann Bishop on 788188 (Ferris), and a copy will be delivered to you. The information will help to make you feel at home - by acquainting you with the services, schools, clubs and societies that are currently active in the villages.

BRIDGE DRIVE

You may have noticed that we advertised a Bridge Drive in the Village Hall last month. This was a very successful event which raised £340 for Leukaemia Care. We are grateful to those who helped, supported or attended.

Frank and Jean Scouse

Sports & Remedial

Massage

Aid sore, aching
muscles and
injuries

Victoria Smith

ITEC DIP SPORTS MASSAGE, VCTC, MIGHT
01295 780610
07974 231571

Micks Sticks

Fire Lighting Wood For Sale
£2.50 per big bag
Call in anytime and ask for
Mick Canning, at
The Old Malt House,
Sibford Ferris
Tel; 01295 780321

Serenity at Sibford

Gautherns Barn Sibford Gower

01295 788463

New lower prices to beat the credit
crunch and feel GREAT!

* Facials * Botox Clinic * Waxing * Massage
* Manicures and Pedicures * Eyebrows and Eyelashes

Open Monday Wednesday and Friday

9.30am-6.00pm

**This year The Warriner Choral Society offer
A CHRISTMAS TREASURY**

of seasonal 'gems' which shall include some rarer carols (yet just as sweet) for example, a medley by Holst drawn from medieval times, Wilhousky/Leontovich's evocative

Carol of the Bells

and many others.

**Christmas Readings will be delivered by guest
CHARLES ROSS**

known to many from BBCtv's *Flog It*, the *Antiques Roadshow*, etc, and who is an accomplished singer, himself.

Saturday 12th December; St Mary's Church, Bloxham, at 7.30 pm, under Musical Director Martin Quinn. Organist Jeremy Meager. Seasonal refreshments.

Tickets £10 (£8 concs) from Jenny on 01295 721224
or on the door.

Oddjob

**CARPENTRY
PLUMBING
ELECTRICS
HEATING INSTALLATION
KITCHEN & BATHROOM FITTING
BUILDING WORKS
SECURITY**

**FOR A COMPREHENSIVE AND RELIABLE
LOCAL SERVICE**

HUGO SEELY 01295 780355

FREE NO-OBLIGATION ESTIMATES

No job too large

Excellent local references available

Ann Woolgrove
FABRICS, CURTAINS & SOFT FURNISHINGS

Personalised design service and consultancy in
your own home.

Beautiful bespoke Curtains, Roman & Roller
Blinds & Soft Furnishings, handmade to the
highest standard.

Advice on every kind of Fabric from numerous
suppliers.

Stylish complimentary Cushions & Loose
Covers.

Re-upholstery service.

Custom made Bedspreads & Headboards.

New Sofas & Chairs

Tel/Fax: 01295 788145

Email: info@annwoolgrove.com

www.annwoolgrove.com



FESTIVE FAYRE

Sibford School is hosting a Christmas Craft Fayre on **Friday December 4 between 2.30pm and 5.30pm.**

Attractions will include Town House Preserves; Little Bird Soaps; Martin Hallam Wood Turning; Belflair Chocolates and Dotty Hen Jewellery. In addition there will be home-made cakes, crafts, toiletries, bowls of hyacinth bulbs, a chocolate fountain and Santa's Grotto.

Admittance is £1.50, which includes free mince pie and hot drink. There is no charge for children.

.PUPILS USE THEIR BOTTLE TO CREATE ECO GREENHOUSE



Junior pupils at Sibford School near Banbury were joined by youngsters from All Saints Primary School in Nuneaton for a very exciting eco project. As part of Recycling Week the children started work on building a walk-in greenhouse made out of more than 2,000 discarded plastic bottles. The day was made even more exciting when the BBC turned up to film the youngsters at work.

Pictured: Hannah Gardiner

Toby Seely

General servicing

Repairs

Cleaning & maintenance

Reasonable rates

Speedy service



For all your bike needs. call 780355

Zoe Andrews

Registered Childminder

Daytime and wrap-around school childcare

Vacancies for children 6 months to 9 years
- local drop off/pick up —term time—
school holidays — great facilities—large
garden—pets—strictly no smoking home
Please call me on 01295 780174, or email
at zoeandrews@btconnect.com

BUILDING PLANS BUILDING REGS. SUBMISSIONS

*
Extensions * Loft conversions
Listed Buildings work * New build

*
D.R. BOVILL, B.A.

DESIGN AND PLANNING CONSULTANT

*
Private and Trade enquiries welcome
01295 788922 davidbovill@btinternet.com



Sibford Horticultural Society

Our evening with Tim Walker was it's usual success. The slides and talk on Sex and Putrifaction in the Garden was informative and entertaining. It

was great to see so many people attending and hopefully they will continue coming. Our next meeting is in March. The handicraft classes for next years show are as follow.

1. A piece of patchwork quilting.
2. A mask for a masked ball.
3. An item of knitting.
4. An item of cross stitch.
5. An item of costume jewellery.
6. A congratulations card (not computer generated)
7. A handicraft exhibit.
8. The spirit was willing... A craft item started but not finished.
9. Photography
10. Tree/Trees.
11. Flower/Flowers.
12. Animal/Animals.
13. Sunrise or Sunset.
14. People/Person at Work.
15. "Motion".
16. Any Seascape.
17. Travel.
18. 4 Related Views.
19. A Black and White photo.
20. An Enlargement.
21. An Amateur Painting or Drawing.

Miss 'T' Catering.

Catering for events such as:
Anniversaries, Weddings,
Christenings, Birthday parties,
Funerals

And private dinner parties.

~.~.~

Also available
Cutlery and Crockery Hire.
Contact Victoria Taylor on:

Mob: 07841 910037

Home: 01295 788924

Oxon Computers

Qualified PC Engineer

Danny, Company Owner

**PC repair, maintenance & configura-
tion**

Tel: 01295 788766 Mobile: 07767 025752

Fax: 01295 788766

Email: Admin@oxoncomputers.co.uk

O
p
u
s

Alan Berks

SPECIALIST INSTALLER

Kitchens and Bathrooms
Natural and handmade
floor and wall tiles
Solid wood flooring

01295 780652

07816 592 124

Alan.berks@btopenworld.com

The Spinney

Sibford Gower, Banbury, Oxon, OX15



**QUALITY FISH DIRECT
FROM**

Proprietor: T.P.Martin

Tel: 07812 361853

GRIMSBY MARKET

Best fresh fish and shell fish to your
area direct from Grimsby on the
Lincolnshire coast

I'll be at Sibford Village Hall car park

EVERY MONDAY from

approximately 4pm till 5.30pm

NEIGHBOURHOOD WATCH

Please remain observant and aware during the Christmas and New Year period.

We are now receiving many more warnings by E-mail and the Ringmaster Messaging Service. Distraction burglaries and bogus callers are of particular concern. "Be safe Be Secure" an informative booklet to help you avoid unwelcome visitors was delivered with the November "Scene". Please take the time to read it and keep it for future reference. Anyone wanting advice on security, locks and alarm systems please contact Jayne Taylor Crime Prevention Officer at Banbury Police Station. Phone 08458 505505. Remember never buy from the door, always check the identity of a caller, look after your neighbour make sure post and papers are pushed through the letterbox and that parcels are not left on the doorstep. If you are away remember to cancel deliveries.

The Sibford Neighbourhood Watch Team would like to Wish You All A Very Happy Christmas and New Year.

REIKI
HEALING FOR HUMANS
AND ANIMALS

LYN SIMMS
MASTER PRACTITIONER

01295 780 655



Jay 'T' Disco's
Music for any occasion
LOCAL DJ Contact Jason on
PHONE:
07949336625
EMAIL:
JASONWT@HOTMAIL.CO.UK

FRANCIS MORDAUNT MCFHP MAFHP

*Member of the Open College of Foot Health Professionals
Member of the British Association of Foot Health Professionals*

FOOT HEALTH PROFESSIONAL

To enquire about a home visit please

telephone: 01295 730615

Professional Foot Care in Your Own Home

Richard Wallington
Builder

Block Paver Drives a Speciality
Also Extensions, Patios
Fencing etc.

High Quality Work, Free Estimates

01295 780705 07743 932545
(Sibford Gower) (Mobile)

HOLY TRINITY CHURCH NEWS

The Remembrance Service was held on Sunday November 8th, starting around the War Memorial as is our custom, where wreaths were laid by Bob Lamb on behalf of the British Legion and by Bethany Owen on behalf of the 1st Sibford Scouting Group. The Last Post and Reveille were played by trumpeter Michael Butt; Robin Spicer took the service and that following in the Church assisted by Major Sue Vivash, a nurse in Queen Alexandra's Royal Army Nursing Corps and by Pat Hughes a coxswain in the Royal Naval Submarine Service.

A meeting of the Parochial Church Council was held on Thursday 12th November. There were numerous items under consideration: The resignation of Ann Spicer as church warden owing to her impending move to Thailand. Proposals for Ann's successor are called for from the members of the parish; reference was made to the long service of Ann and Robin to the Church and of their families before them and the warm thanks and good wishes of the PCC members were expressed; the Annual Confirmation Service is to be held at Tadmarton on 6th December at 10.00 and this will be conducted by Bishop Colin; the year's series of coffee mornings which were most successful for fellowship also made a surplus of £1,077.15 which will help with the continuing cost of the sound system; the old books in the Church have now been removed and villagers are

asked please not to leave books, DVD's, CD's etc in the Church. There are each year second-hand book stalls at the Summer Fete and the Christmas Bazaar as well as at other village events and it would be

LOCAL HONEY

USUALLY AVAILABLE

Bill Wealsby

Tel:01295 788405

Swarms of bees wanted

FARMHOUSE

**BED AND BREAKFAST
GRANGE FARM, SWAL-
CLIFFE**

*Enjoy warm hospitality & peaceful
surroundings in our comfortable
18th C Farmhouse
CONTACT BARBARA TAYLOR*

Contributions for the

February

Sibford Scene

to the Shop or Editor by

January 19th

greatly appreciated if villagers with spare books etc could hold on to them until the events occur when they would be much appreciated by those running the stalls; It was decided to promote a house-to-house envelope collection for Christian Aid during Christian Aid week which next year will be from 9th to 16th May 2010. It is hoped that this will be supported by all the Christian denominations in the villages and volunteers are called for from the Anglican, Catholic, Methodist and Quaker communities to act as distributors/collectors. Offers of assistance please to Norman Nash 780980 (nnash@waitrose.com.) A representative of the Oxford Christian Aid office with direct experience of work "in the field" will be speaking at the Benefice Service being held in Sibford on May 2nd.

The Annual Carol Service will be held in the Church on Friday 18th December at 7.00 pm. This will be followed by Mince Pies and Mulled Wine. Carol services in Broughton and Tadmerton Churches as well as other Christmas services in the Benefice are shown elsewhere in this publication.

In case you receive this copy beforehand, don't forget the Church Christmas Bazaar being held in the Village Hall at 2.30 pm. on Saturday 28th November. This is a major fund raising event for the Church and it is hoped that it will be well supported. There will be much on offer relevant to Christmas.

The PCC members wish all in the village a Very Happy Christmas and a Peaceful New Year.



Sarah Walker

Vivienne Nott



fresh flowers, fresh ideas

Gorgeous bouquets & arrangements

Wedding bouquets, churches,

marquees and receptions

Flowers for supper parties,

house parties and celebrations

Funerals and memorials

Contact :

Sarah :01295 788595 Viv:01608 652819

Bed & Breakfast

AGDON FARM

Nr Brailes

Comfortable rooms

in old stone farmhouse

Tel: Maggie Cripps

01608 685226

Church Services

Society of Friends

Methodist

Roman Catholic Mass

Wroxton

Brailes

Hook Norton

Sunday at 10.30 am

Sunday at 11.00 am

Sunday at 9.00 am

Sunday at 11.30 am

Sunday at 10.30 am

Baptist

Church of England, Holy Trinity, Sibford Gower.

December

Sun 6th Confirmation at Tadmarton 10.00am

Mon 7th Evening Prayers 8.00 pm

Sun 13th Carol Service in the Chapel 11.00 am

Sun 20th Christingle Service 4.30 pm

Thu 24th Midnight Mass 11.30 pm

Fri 25th Christmas Communion 10.00 am

Sun 27th Benefice Service at Epwell 10.00 am

January

Sun 3rd Benefice Eucharist at Broughton 10.00 am

Mon 4th Evening Prayers 8.00 pm

Wed 6th Benefice Eucharist for Epiphany Shutford 8.00 pm

Sun 10th Holy Communion 8.00 am and Family Service 10.00 am

Sun 17th Holy Communion 9.30 am

Sun 24th Christian Unity Week Service 11am in the Methodist Chapel

Sun 31st Matins & Holy Communion 9.30

February

Mon 1st Evening Prayers 7.30 pm

Tues 2nd Candlemas - Swalcliffe 8 pm



RED HORSE VALE LTD.

All Types of Fuel, Coal, Smokeless, Gas,
Logs, Kindling, Barbecue Needs
Central Heating Oil, Oil Tanks & Coal Bunkers
Landscape & Building Materials, Garden Centre &
Garden Supplies. Farm & Country Sundries
Equestrian Products, Horse & Pet Feeds
Open: Monday - Saturday 8am - 5pm
Windmill Farm, Banbury Road (A422),
Oxhill, Warwickshire CV35 ORP
Tel: 01926642832
Fax: 01926 642 853

Cotswold Sketchbook

Receive a mini oil painting in your
inbox each weekday ~
fresh off the easel, go to

www.cotswoldsketchbook.co.uk

and enter your email address.
You will get no spam and the
address will not be forwarded.

Paintings are for sale on a first
come basis



Sibford Bus Services

Cherwell Rural Dial-A-Ride Scheme

A mini bus with tail-lift to take **elderly or disabled people** and escort to Banbury (max fare £1.60) Door-to-Door service. Book at least one day in advance. Operates on Wednesdays & Thursdays. Phone 263777 for details. BCTA also takes bookings for groups of 8 or more on a weekly/monthly basis (Wednesdays & Thursdays) to and from Banbury. Tel; 263777

Stagecoach – Timetable commencing 31st May 2009

Mondays to Saturdays (No services on Sundays or Public Holidays)

Bus 50A. From Banbury towards Stratford-upon-Avon

Banbury, Bus Station	08.30	10.55	12.45	14.26	16.05	17.10	18.10
Sibford Ferris, Cross Roads	08.52	11.17	13.07	14.48	16.27	17.32	18.32
Sibford Gower, School	08.55	11.20	13.10	14.51	16.30	17.35	18.35
Shipston,	09.15	11.40	13.35	15.11	16.50	17.55	18.55
Stratford on Avon, Wood St.	09.40	12.09	14.04	15.40	17.19	18.24	19.24

Bus 50A. From Stratford-upon-Avon towards Banbury

NS

Stratford on Avon, Wood St	06.20	07.10	09.05	11.10	13.10	15.10	16.24
Sibford Gower, School	07.04	07.55	09.56	11.56	13.56	15/56	17.14
Sibford Ferris, Cross Roads	07.07	07.58	09.59	11.59	13.59	15.59	17.17
Banbury, Bus Station	07.28	08.25	10.21	12.21	14.21	16.21	17.39

NS = Not Saturdays

All buses will operate low floor wheelchair accessible vehicles.

For complete details of all the stops that are served by service 50A, timetables are obtainable from bus drivers and Sibford Stores & Post Office.

Fares:-

Sibford Ferris & Sibford Gower to Banbury: Single £2.30 (Child£1.15)

Return £4.40 (Child £2.20)

Sibford Ferris & Sibford Gower to Stratford: Single £4.00 (Child £2.65)

Return £6.00 (Child £4.00)

Seven days unlimited travel £20.00

Twenty eight days unlimited travel £76.00

Calendar of Events

November

Sat 28th Church Christmas Bazaar 2.30 pm Village Hall

December

Fri 4th Christmas Fayre at Sibford School 2.30 - 5.30pm p17
Sat 5th Coffee Morning in the Methodist Chapel p6
Tue 8th WI Christmas Party p5
Wed 9th Mobile Library in the Sibfords (2.40 - 4.10pm)
Sat 12th Village Hall Film Night "Polar Express" 5pm p3
Sat 12th A Christmas Treasury. Warriner Choral Society p16
Sun 13th Methodist Chapel Carol Service 11.00 am p6
Tue 15th Friendship Club Christmas Tea 3 pm .6
Fri 18th Church Carol Service 7.00pm p21
Wed 23rd Mobile Library in the Sibfords (2.40 - 4.10pm)

January

Mon 4th Friendship Club meeting p6 (please check this date - ed)
Wed 6th Mobile Library in the Sibfords (2.40 - 4.10pm)
Sat 16th Village Hall Family Quiz 5pm p3
Wed 20th Mobile Library in the Sibfords (2.40 - 4.10pm)
Thu 21st Sibford Gower Parish Council Meeting p9
Sat 23rd Jumble Sale at the Primary School p14
Thu 28th Sibfords Society Social Evening p12

A Merry Christmas to all our readers

Cover picture. The Manor after burning out.

Sibford Scene

Editor; Adrian Lamb. Grounds Farm, Sibford Ferris. 780380
e-mail adrian.lamb@care4free.net

Treasurer; Timothy Wimbush, The Rectory, Acre Ditch, S.Gower
780555

Advertising; Ivor Hopkyns, Elmridge Farmhouse, Sibford Gower,
Banbury, Oxon. OX15 5RT. Tel 788367