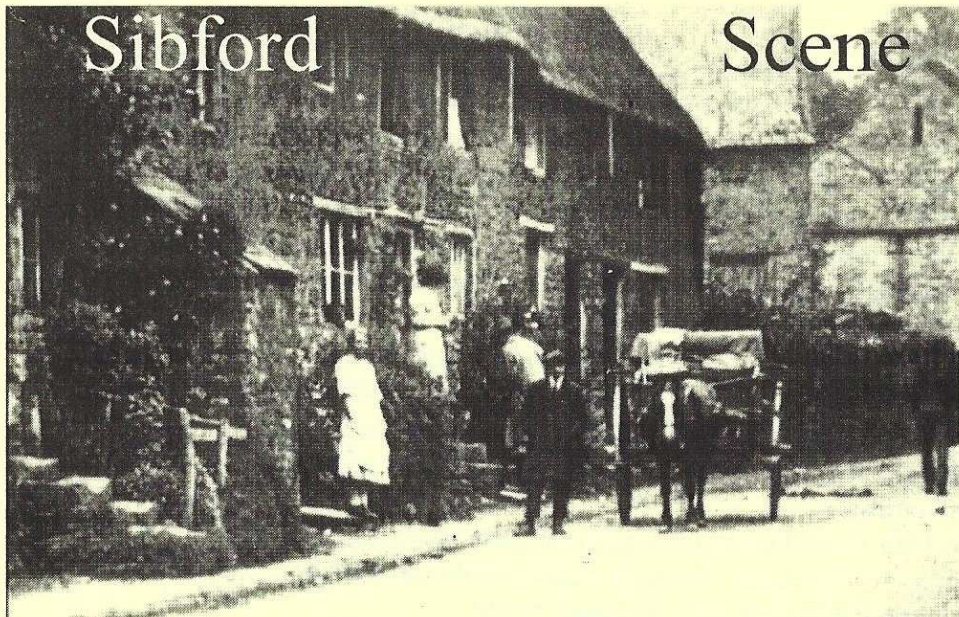


Sibford

Scene



August and September 2009

No. 315

## National Play Day Wednesday 5th August Caterpillar Music

will be at Cotswold Close Playarea at 2.00pm  
for a free music taster session for children under 11 to try out  
percussion instruments with encouragement and supervision.

---

Sibford Horticultural Society

## Annual Flower and Produce Show

Saturday 29th August at the Village Hall

---

Oxfordshire Historic Churches Trust

## Sponsored Ride or Stride

Saturday 12th September

---

Sibford Village Hall

## Murder Mystery Night

Saturday 19th September from 7.00pm

## Nature Notes

June 25th A cameraman at the Wimbledon tennis focused in on a butterfly which was probably a brown or white-letter hairstreak. They only showed a brief glimpse of it and not a word from the commentators. I would have liked them to have kept it on for a few more seconds.

June 28th Two people have told me that they saw twisters extending horizontally from a storm cloud today and that one appeared to bend and go up vertically. I have never seen them do this although I have seen them hang from the bottom of storm clouds.

July 6th Last month a red kite was seen in Burdrop and today one was seen to the north of Sibford Gower so they are getting here.

July 12th The rooks came back to roost at the Sibford Ferris rookery tonight and went on talking in very loud voices for nearly half an hour before settling down.

July 15th A well grown young great spotted woodpecker came to feed on peanuts while a cock pheasant, minus all its tail feathers, walked across the lawn. I wonder how it manages to fly.

July 17th A song thrush sang on through some very loud claps of thunder at 4.20am only stopping briefly when we eventually got a burst of torrential rain.

July 19th I never find it easy to identify gulls but when we walked along the coast path to the south of Seahouses the colony nesting on the cliff were telling us what they were before we got to them by calling out kitti-wake kitti-wake. They apparently only call when they come ashore to nest living quietly out at sea for the rest of the year. There were still plenty of nests with young and some may still be sitting on eggs as I saw



**HOLMBY HOUSE**  
**SIBFORD FERRIS**  
A stunning setting for  
special celebrations

*From Buffets to Gourmet Dinners*

Formal dining for large groups  
Garden parties Business meetings  
Luxurious B & B

Self-catering accommodation

Tel/Fax: 01295 780104

[www.holmbyhouse.com](http://www.holmbyhouse.com)

[Sally.wass@btinternet.com](mailto:Sally.wass@btinternet.com)

**THE VILLAGE SHOP**  
**HOOK NORTON**

**\*NATIONAL LOTTERY\***

Grocery - Greengrocery - Bakery

Wines - Spirits - Confectionary

Newspapers - Magazines - Cards

Video Rental - Bottled Gas

Open Monday to Friday

7 am to 8 pm

Saturday 8 am to 8 pm

Sunday 8 am to 6 pm

Telephone: 01608 737245

through my binoculars a black headed gull eating what looked like a chick from an egg that was very close to hatching.

July 20th The notice at Bamburgh SSSI showed petalwort as a flower that grows on the dunes there. We could not find such a plant listed in our books but we did see pyramidal orchids and a lot of English stonecrop which were also on the notice.

July 21st There is more ragwort on the roadsides up here particularly the bigger roads where the seed is sucked along by passing lorries. It is colourful but will get monotonous if it covers all the verges.

July 22nd On our way to Holy Island we had to avoid a hedgehog which was trying to cross the road. Proof that they still have some up here. The sand dunes on Holy Island are as good as any I have seen for wild flowers with carpets of eyebright, autumn gentians, vipers bugloss, grass of parnassus, houndstongue and the very invasive pirri-pirri bur which came from Australia and is very common up here. I had a burr sticking to my sleeve when we got back to the car park. It is that easily spread. There were also a few fritillary and blue butterflies.

July 23rd I don't think I have ever seen more swallows and house martins that there are here. There must be a good supply of insects along the shore line and dunes. Younger eyes have spotted a colony of sand martins nesting in the sandy part of the cliff near the kittywakes but we have seen very few swifts. I suppose some of the older birds might have already left but the streets down by the harbour look made for swifts to scream along. We found that nesting colonies of kittywakes are common along this coast and on the Farne Islands where the younger members of our party enjoyed a tour by boat this morning.

July 24th There are more swifts here than I thought. As we were leaving I saw a group of more than twenty high up in the cloudless sky.



**FOLLY FARM  
BACK PAIN CLINIC**

*Gentle but effective treatment*

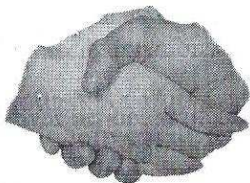
**Aches & Pains?**

**I can help you!**

Just visit the local clinic between  
**Sibford & Swalcliffe**

Contact: **John McArthur**  
B.Sc. & Dip (Chiropractic)  
McTimoney-Corley Practitioner  
(M.A.M.C.S.T.)

**Tel: 0845 862 4 862** (local rate)  
**Mob: 07740 404 678**



## Friendship Club

We don't meet during August so our NEXT meeting will on SEPTEMBER 1<sup>st</sup> when we will be investigating 1 of the "Little Boxes" Which will be the Mystery Box. Also our outing is on SEPTEMBER 15<sup>th</sup> and we are going to Hill Close Gardens, Warwick. Anyone wishing to join us on our trips, Please call Eveline on 263460 Have a lovely holiday and see you all in Sept

Kathleen Winter

Would like to thank all those in Sibford and around for their "Get Well" wishes, cards, flowers and gifts. Also for the many offers of help given to Barbara and herself. Your kindness was over-whelming and greatly appreciated. I am making progress - not driving - yet!!

Sibford Stores & Post Office  
Sibford Ferris  
OX15 5RG

Telephone 01295 788317 / 788348

**YOUR LOCAL CONVENIENCE STORE AND NEWSAGENT**

We deliver newspapers and magazines 7 days a week to all the surrounding area. Place your regular order today, whether for 1 day a week or 7. Always a wide selection of magazines available, specialist titles available to order.

Chilled & Frozen foods, groceries, cigarettes, beers, wines and spirits, fresh fruit and vegetables, pet foods, household goods, toiletries & medical requisites and lots, lots more.....

National Lottery, Photocopying, fax service, dry cleaning & buffet lunches. We will also undertake your mailings for you, just speak with Terry or Judith.

Always an excellent selection of Hook Norton bottled beers in stock.

Telephone your grocery order for free local delivery.

### **OPENING HOURS**

**Monday to Saturday 5.00am to 6.00pm**

**Sunday 5.00am to 1.00pm**

**PLEASE SUPPORT YOUR LOCAL POST OFFICE, THERE ARE LOTS OF PRODUCTS AND SERVICES AVAILABLE ON YOUR DOORSTEP**



Women's  
Institute

## Sibford WI. Meeting – 14<sup>th</sup> July 2009

This year's Garden Meeting was hosted by Norma Allen at her home in Shenington. Actually, the weather was not settled enough to be held in the garden but, fortunately, Norma has a very spacious conservatory which comfortably seated the nineteen members who attended and enabled them to enjoy the beautiful views across the lawns to the rolling countryside beyond. Charlotte Cox gave an excellent report of the OFWI trip to Hatfield House on the 16<sup>th</sup> June and Jane Martin displayed brilliant photographs which she had taken on the day. Caroline Jennings, Charlotte and Jane then told us about their weekend at Denman College on 19<sup>th</sup> to 21<sup>st</sup> June. Samples of Charlotte's parchment craft and Jane's drawings were much admired. Caroline gave a mouth watering description of her cheesecake. President Glennis Hardman told members about the 'Supper with Scarecrows' evening at Millets Farm on 2<sup>nd</sup> July. On a perfect summer evening there were over fifty impressive scarecrows to view, including Caroline's worthy contribution from Sibford, followed by an alfresco buffet supper. Caroline, Lynda and Glennis had all taken lots of colourful photographs for members to peruse. With business matters over, it was time to enjoy enticing cakes and scones followed by a wander around the lovely garden. Lynda Conway presented Norma with a garden token in appreciation of her hospitality. The next meeting will take the form of a coach trip to Ascott House on 11<sup>th</sup> August, meeting

at the Village Hall at 12.15pm. On 8<sup>th</sup> September, Jenny Roberts will be giving an illustrated talk on her experience in Malawi with Habitat for Humanity. The competition will be an African artefact.

Glennis Hardman

### **GODSWELL NATURAL THERAPY CENTRE**

*Godswell Lodge, Church Street, Bloxham  
Banbury, Oxon OX15 4ES*

\*\*\*\*\*

**Acupuncture, Alexander Technique,  
Aromatherapy, Art Therapy,  
Chiroprody, Chiropractic,  
Counselling & Psychotherapy,  
Cranio-sacral therapy, Homoeopathy,  
NLP, Nutrition, Physiotherapy,  
Reflexology, Remedial Massage,  
Reiki, Spiritual Healing,  
Shiatsu, Yoga.**

\*\*\*\*\*

**Fully qualified professional therapists  
For information Ring 01295 720347**

A. Sabin

# LOGS

Millbarn, Hook Norton

Telephone 01295 788421

Mobile 0781 7709044

# The Sibfords Society

## SIBFORDS SOCIETY EVENING STROLL POSTPONED DUE TO JULY DELUGE

Following a really heavy downpour our evening stroll around the Gower had to be postponed. We now plan to try again on Thursday 20th August meeting at The

Wykham Arms at 7pm. Robin and Ann Spicer have planned a route for us with a some questions to try to answer on the way. Everyone is welcome to join us to puzzle out the answers and to enjoy a sociable evening stroll finishing back at the Wykham Arms. See you there?

The September Meeting will be on 17th at 8pm and will be a talk by Mairi McDonald about Local families and the Gunpowder Plot

---

## TADMARTON CHARITY WALK / RUN / HORSE RIDE

*7 or 12 miles through beautiful Oxfordshire countryside*

Walk or Run Saturday August 22nd

Adults £5 (pre-booked £3)

Children £1 (pre booked 50p)

Family £10 (pre booked £5)

Dogs on lead welcome. Sorry - No bikes.

Fun Ride Sunday August 23rd

Includes 2 cross-country courses and many other jumps!

Ring for details: Jill Perry 01295 780538

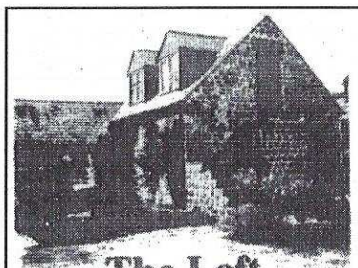
E-mail: [jperry@go-plus.net](mailto:jperry@go-plus.net)



The Firs, Hook Norton, Banbury. OX15 5DD  
Email: [enquiries@graphics-direct.co.uk](mailto:enquiries@graphics-direct.co.uk)  
Phone: 01608 730555 Fax: 01608 730271

**For all types of Vinyl Graphics & Signage.**

**Theresa Harper**  
DESIGNING PRODUCING & FITTING



### The Loft at Forge House

Visit Britain 4 ♦

*Bed & Breakfast  
or Self Catering Apartment  
with double bedroom*

**Carole Ralph**

The Loft at Forge House  
Old Forge Yard, Swalcliffe,  
Oxon OX15 5EH

Tel & Fax: 01295 788677

Email: [stuart@forgeyard.treeserve.co.uk](mailto:stuart@forgeyard.treeserve.co.uk)  
[http://mySite.wanadoo-members.co.uk/the\\_loft](http://mySite.wanadoo-members.co.uk/the_loft)

## My fund-raising walk

Overnight on Sept 18, I will be joining 2000 other people walking 20 miles round London to raise money for Maggie's Centres.

A Maggie's Centre is a place to turn to for help with any of the problems, small or large, associated with cancer. They are for anyone who wants help and information- the person with cancer, their family and friends. I visited the centre in London with my sister when she was diagnosed with cancer. The staff were so helpful, offering counselling, benefits advice and all the factual information we needed over several visits. Sibford's nearest centre is at the Churchill in Oxford where a beautiful new building is planned. I hope you will feel able to help me raise as much money as possible, who knows when any of us might need the help offered in a wonderfully welcoming, relaxed, non-medical environment.

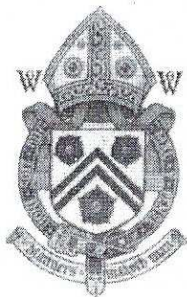
Thank you so much.

Fiona Pidgeon, Burdrop Green (780360)

### DAMIAN AND DEBBIE WELCOME YOU TO **THE WYKHAM ARMS**

Temple Mill Road, Sibford Gower, Nr. Banbury OX15 5RX  
Tel: 01295 788808

Quiz Night  
on First Sunday of the Month  
'Hooky Night' Wednesday  
evening 6.00 - 7.30 pm  
(Beer, Lager, House Wine)  
Wi-Fi Hotspot Service  
Bar only Sunday Night, Closed  
All Day Monday



Fantastic Family Sunday  
Lunch  
(Booking advised)  
Freshly prepared  
local produce.  
Opening Times  
11.00 am - 3.00 pm  
6.00 pm - 11.30 pm

[www.wykhamarms.co.uk](http://www.wykhamarms.co.uk)

email; [info@wykhamarms.co.uk](mailto:info@wykhamarms.co.uk)

## Sibford Gower Parish Council Meeting – Tuesday, 14<sup>th</sup> July 2009

The five Parish Councillors, eight local residents and the Clerk were in attendance. The Clerk's Report included that on 17th June, he and Parish Cllrs Peter Abbott and Martin Layer attended the Cherwell Parishes Meeting at Bodicote House. Information about the presentations was subsequently circulated amongst the Parish Councillors. Cllr Peter Abbott referred to the use of a certain Bridleway by vehicles and motorbikes. Bridleways should only be used by walkers, cycle riders and horses. The Clerk was instructed to establish whether or not the pathway involved is actually classed as a Bridleway. The Parish Councillors recently had considered the Partial Review of the Regional Spatial Strategy and various matters had been raised. Cllr Martin Layer undertook to formulate the Parish Council's views. Mr John Sabin had offered to provide a seat in the Burial Ground in memory of his late wife who very recently passed away. The offer was accepted with thanks and the Clerk was instructed to contact Mr Sabin to take the matter forward. Cllr Martin Layer had reported that the owner of the land to which the entry from Pound Lane is to be the site of the new bus stop had expressed concern that Oxfordshire County Council may wish to formalise it by laying a permanent surface and this he would oppose. The Clerk informed the Meeting that he had spoken with Mr Matt Bromley of OCC who said that there would be no question of this and it was accepted that there were many bus stops such as this in the County where underfoot conditions in inclement weather may not be as one might wish. The new bus stop sign will be sited on the other side of Pound Lane, where there is a suitable pathway, with the sign indicating that the bus will stop at the place in question at the other side of the road. The Clerk reported that OCC is in discussion with Stagecoach regarding the sometime problem of buses keeping to the timetable because it does not give drivers sufficient time between stops. Planning Matters: Two Planning Applications had been considered and two Planning Decisions received.

### **WOODSIDE GARDEN**

#### **MAINTENANCE**

#### **Border Maintenance**

#### **Grass Cutting**

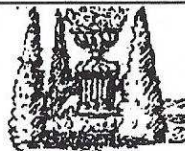
#### **Hedge Cutting**

#### **All Your Garden Needs Etc**

#### **BTEC and NCH Qualified**

#### **Call Matt Simms**

**07976 644 509 or 01295 780 655**



### **BED & BREAKFAST**

**Buttslade House Cottage (Sibford Gower)**

offers comfortable accommodation with  
en suite bathroom overlooking a tranquil  
English country garden.

Contact Diana Thompson

(01295) 788818

or [janthompson50@hotmail.com](mailto:janthompson50@hotmail.com)

[www.buttsladehouse.co.uk](http://www.buttsladehouse.co.uk)



Footpath Matters: Regarding a complaint made by a local resident at the Annual Parish Meeting regarding the standard of workmanship of the recently resurfaced footpaths, Oxfordshire Highways advised on 8th June that the work had been inspected and found satisfactory and therefore the complaint was considered to be unfounded. The Parish Council is not content with this but will review the situation in six months time to reassess the condition of the footpaths at that time. Rural Exception Sites for Affordable Housing: Cherwell District Council has reviewed previously considered sites in Sibford Ferris and Sibford Gower and two have been assessed as being possibly suitable to pursue, one in the Ferris and the other in the Gower. The site in the Gower to the rear of High Meadow has a considerable chance of being successful if an appropriate access could be created. The Parish Council responded by advising CDC that the site appears to have potential worth debating. Highway access is the key and may be costly to overcome but may deliver a solution to the parking problem. There would be no objection should the Ferris site be selected. Churchyard: The current situation is that Sibford Gower Parish Council engages Mr Cedric Brown to maintain all areas and paths apart from the very old part (which is left as a nature reserve) and the six rows of graves immediately to the front of the Church. Sibford Ferris Parish Council has accepted responsibility for these six rows which will be maintained on a voluntary basis. Burial Ground: The commemorative seats donated by Mrs Evelyn Phillips are now in place and a letter of thanks and appreciation had been sent to her. With regard to ongoing maintenance, Mr Cedric Brown expressed a considerable reservation regarding dividing the area into two, with one part for current use and the other as a reserve for the future. The intention was that the reserved area should be sheep maintained from time to time but it has been found that sheep will probably not be available. The matter requires to be reassessed and will be referred to the Parish Councils' Burial Ground Working Committee for consideration. Allotments: It had been brought to the attention of Cllr Martin Layer that there may be a wish to have the facility for allotments in the Parish. Initially, it was thought that the Parish Council owned Miriam Tebbs' land may be suitable but objections were raised by adjacent local residents. The Clerk was instructed to place a notice in the Sibford Scene to establish what demand there may be for allotments and whether any local resident may be willing to devote land for this purpose. There are other avenues to

## C.A. Berger

painting & decorating  
interiors & exteriors  
residential & commercial

Mobile: 07875 212 315  
Office Tel: 01295 780 140

Half Loads

Full Loads

## LOGS

Very Competitive Prices  
Seasoned Hardwood Logs  
Basil Page 01295 780215  
Fencing Jobs Big or Small

pursue but these will await the result of the Sibford Scene notice. Public Participation: The following matters were raised by local residents at the Meeting. A tree near to her property in Burdrop requires pruning as does the hedge of a plot of land adjacent to Burdrop Hill. The Clerk will take matters forward. A stone wall on one side of part of the pathway between Backside Lane and Main Street is in a state of collapse and a potential hazard. The Clerk will speak with the owners of the property concerned. Reference was made to the bus stop sign to be installed at Burdrop Corner with a suggestion for its siting to easier facilitate access to buses. The Clerk will take this matter forward with the appropriate authority. Any Other Business: Cllr Peter Abbott referred a recent difficult situation where an ambulance called to an emergency situation at a property at the end of Bonds End Lane could not effect entry because of parked cars. The Parish Council is very aware that parking in some areas is an on-going problem and a solution is not easily found. From time to time, residents are asked to give due consideration in parking vehicles. Cllr Martin Layer referred to the deteriorating condition of the surface of part of the road leading from Hawkes Lane to the Surgery. The Clerk was instructed to speak with Oxfordshire Highways. The next Meeting of the Parish Council will be on Wednesday, 16th September 2009 starting at 8pm in the usual venue – The Staff Room of Sibford Gower Endowed School. There being no further business to discuss, the Chairman thanked all present for attending and closed the Meeting at 9.35pm.

# **The Firs Garage**

**All makes vehicle servicing**

**Competitive prices  
Factory trained mechanics  
MOT Parts Bodyshop Fuel  
Large site with easy parking**



**Extensive range of new and used vehicles**

**Hook Norton, Oxon. OX15 5DD** (1 mile North of Hook Norton village)

**Tel: 01608 737349 / 737641**

**www.firs-garage.com**

**Family Business Established 1960**

## VILLAGE HALL NEWS

Following a busy two weeks in June with the Fayre and the "Damn Right I Got The Blues" Band, the Village Hall would like to thank all those who helped on the day, or provided things. The Fayre raised nearly £800. The Band night was a fantastic event as I am sure all those who were there would agree, and we raised approx £1,400. Our next event is "HIGH SPIRITS" –A Murder Mystery Evening. "The Cassidy's are celebrating the opening of their new pub. Tensions are running high with spooky games and too much drink. Then one of the guests is found dead!" We need volunteers for two male actors and two female actresses to help act out the scenario playlet. If you fancy yourself as a bit of a thespian then contact Muriel on 01295 780025. You can still take part in solving the mystery and there is a prize for the winning team. Teams of 6 to 8 people are invited to enter. Cost £10 per head which will include a hot supper. We will limit the number of teams to 10 so get your team together and book in with Muriel on the above number. Doors will open at 7pm for 7-30pm start. Licensed Bar available.

### FILM NIGHTS

We have some more dates planned for the Autumn Season. Saturday 3rd October 5pm for 6pm start, Wednesday 28th November 7pm for 7-45pm start and Saturday 12th December ,5pm for 6pm start .Film Titles will be advertised soon.

### VILLAGE HALL LOTTERY GAME

Anyone interested in joining this game could you please ring Muriel on 780025. For a one off payment of £12 per year, half would be paid out monthly in prize money and half would go to the Village Hall funds. We have nearly 150 people interested, so if we could make it 200 people, £100 in prize money per month could be paid divided between 1st. 2nd and 3rd. With the high cost of oil and electricity and always wishing to keep the hall in a good state of repair, fund raising has to be an ongoing item.

### FUTURE EVENTS

In January 2010 we are hosting a Family Quiz, devised by one of our local families. More details in the autumn Sibford Scenes.

We would welcome some input from the villagers. If you have any suggestions as to what you would like see improved in the hall do contact Joan on 01295 780410. (cont ...)

The Live Band 'Damn Right I Got The Blues' played to a packed and very enthusiastic audience on the 27<sup>th</sup> June and it was great to see so many people dancing. Our thanks to Antony and the Band for such a great evening, also to Steve Wilkinson and his helpers for the great BBQ and to Charlotte, Michael, Rory and Barney for their hard work in the bars. Thanks to all the Committee Members who helped on the night and after — without all these people this evening would not be possible. The evening made a great profit of £1,417 for Hall funds, which is a great help towards the running of the Hall and enables us to keep hiring costs to a manageable level.

We are continuing to improve the facilities and hope to replace the stage curtains as soon as possible. We are also still looking into applying for a grant to double glaze the windows in the large hall. Then, of course, there is the store room which needs some TLC! It never stops!

---

**Sibford Ferris Parish Council  
New Clerk for Sibford Ferris**

Following the resignation in July of Anita Spencer, who held the post of Clerk for five years, Sibford Ferris Parish Council is pleased to welcome new Clerk, Mrs Carolyn Heather from Sibford Gower. Mrs Heather will also be taking on the role of Responsible Financial Officer. The new contact telephone number is 780695.

**Street Lighting in Sibford Ferris** The initiative to switch off street lights in Sibford Ferris from around midnight (not Cotswold Close), is due to commence at the end of July.

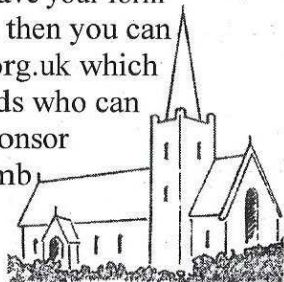
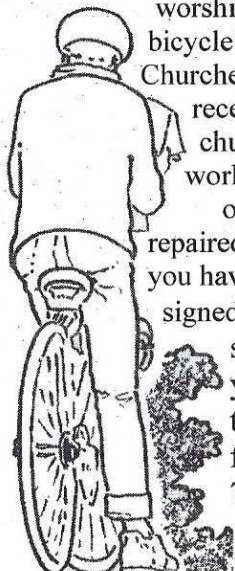
**National Playday Event  
at Cotswold Close Play Area, Sibford Ferris**

Wednesday, 5<sup>th</sup> August is National Playday and there will be an event for children under 11 at the play area at the end of Cotswold Close (off the Hook Norton Road) at 2.00 pm. This will be a fun, 40-minute music session which will be free of charge thanks to Caterpillar Music who are providing the entertainment. It will be an opportunity to try out fun music and percussion instruments under supervision. Of course, children will also be able to enjoy the play equipment. Why not bring a picnic? Please note there is no parking in Cotswold Close itself, so please park in the village and make your way on foot if you are driving over. *(Please also note that in the event of wet weather, which we very much hope will not be the case, unfortunately the event may have to be cancelled or postponed.)*

Oxfordshire Historic Churches Trust  
**Sponsored Ride or Stride**

**Saturday 12th September 10 am - 6 pm**

Once again the Ride or Stride is coming up. The idea is to visit places of worship (Churches, Chapels, Meeting Houses etc) on foot or by bicycle and to raise funds both for the Oxfordshire Historic Churches Trust and for your nominated place of worship - which receives 50% of your sponsor money directly. With so many churches having increasing maintenance costs the need for the work of the Trust in giving grants for repairs is increasing. Our own church received help from the Trust when the roof was repaired a few years ago. The event is very easy to take part in as all you have to do is visit places of worship and have your form signed. If asking for sponsors is a problem, then you can set up your own page at [www.ohct.org.uk](http://www.ohct.org.uk) which you can then email round your friends who can then support your efforts on line. Sponsor forms are available from Arnold Lamb 780357 or contact the Editor.



*Learn to dance whilst you have fun with*

## **Dance-Addiction**

**Ballroom & Latin-American Dance Classes**

**Come and join us at  
Sibford Gower Village Hall**

**New AUTUMN TERM starts 15th September!**

**Tuesdays - Adult Beginners 7pm  
Adult Improvers 8pm**

*Other days and venues are also available*

**Tel. 01295 788079**



Web: [www.dance-addiction.co.uk](http://www.dance-addiction.co.uk) Email: [info@dance-addiction.co.uk](mailto:info@dance-addiction.co.uk)

## SIBFORD CRICKET REPORT

First things first I have to congratulate the Gower Greyhounds on their (close) victory against the Ferris Foxes in the Bert Gilbert Memorial Match. The weather was good for a change and everyone had a great day. It was nice to see so many supporters come along and watch, and enjoy the BBQ. This brings me to give a big thank you to Adrian Cooper for the use of his BBQ, to Ainsley Ward and Wheeler Wealsby for cooking all day, and big thanks also to everyone who contributed to the raffle prizes, cakes, wine and a Sunday lunch (Damian & Debs). The 'Power Play' Comp was won by Ben Leyburn and Roly Dean getting £20 each for guessing the over/s with the most runs in it. 2 separate overs having 13 runs knocked off them. Well Done! Sibford In the league are having a great run at the moment, which you will know if you follow it in the Banbury Guardian. We are currently in 3rd position just 12 points behind the joint leaders, Evenley A & Preston Capes. This is some consolation after losing in the Div 2 KO cup semi finals by just 4 runs to Preston Capes. Richard (The Don) Ferley 100 no & 118 in consecutive matches, and Tom Bowen, who is looking like he want's to set the fastest 50 record each week, seems to have given the team a huge boost in confidence which is showing throughout. Promotion could be just around the corner! I shall put up fixture lists on the village notice boards for the forth coming matches so that you can come and help us along In our quest for the championship. Evenly A 201 pts, Preston Capes 201, Sibford 189, MK Air 185, Preston Bissett 156, Greens Norton 123, Silverstone 110, Wardington 108, Hanslope 95, Croughton 76. (20 pts for a win )



**To Rent.** A recently redecorated and spacious 2/3 bedroom bungalow with a large garden in a quiet cul-de-sac in the heart of Sibford Gower. For further details contact **Martin & Co.** on **01295 701 773**.

## The Question of Allotments in Sibford Gower & Burdrop

Sibford Gower Parish Council understands that there may be a desire for the use of land for allotment purposes and to ascertain the strength of feeling in this regard it would be extremely helpful if any residents who are interested will contact the Clerk (Peter Hardman Tel: 01295 780391. email: [hardman214@btinternet.com](mailto:hardman214@btinternet.com). There are avenues that can be explored if the response is quite positive.

It will also be very useful to know whether anyone has land that they would consider making available for the purpose. Again, the Clerk will welcome a call.

Sibford Gower Parish Council

### **Sports & Remedial**

#### **Massage**

**Aid sore, aching  
muscles and  
injuries**

**Victoria Smith**

ITEC DIP SPORTS MASSAGE, VCTC, MIGHT  
01295 780610  
07974 231571

### **Micks Sticks**

Fire Lighting Wood For Sale  
£2.50 per big bag  
Call in anytime and ask for  
Mick Canning, at  
The Old Malt House,  
Sibford Ferris  
Tel; 01295 780321

## **Serenity at Sibford**

Gautherns Barn Sibford Gower

01295 788463

**New lower prices to beat the credit  
crunch and feel GREAT!**

\* Facials \* Botox Clinic \* Waxing \* Massage  
\* Manicures and Pedicures \* Eyebrows and Eyelashes

Open Monday Wednesday and Friday

9.30am-6.00pm

## Agricultural Vehicles at Harvest Time

This is plea to all those who park their vehicles in the villages to be considerate to drivers of agricultural vehicles at this busy harvest period. It is often very difficult to get through, especially where vehicles are parked on both sides of the road. Long trailers on large tractors need a lot of space to pass a parked car. If all vehicles park on the same side of the road, leaving a straight passage it will make life a lot easier for the tractor drivers as well as avoiding snarling up the village quite so often.

### **A little thought when you stop at the shop really will help traffic flow.**

Please remember when parking vehicles overnight that we farmers do work late into the evenings and, if we need to move large equipment, tend to do it very early in the morning when there is less traffic. Nothing seems to upset the residents quite as much as being woken up to move a car before 6 am!

If all residents who have off road parking spaces were to use them it would help the running of what we hope will be an easier harvest than last year.

Many thanks from your parishes farmers.

# Oddjob

**CARPENTRY  
PLUMBING  
ELECTRICS  
HEATING INSTALLATION  
KITCHEN & BATHROOM FITTING  
BUILDING WORKS  
SECURITY**

**FOR A COMPREHENSIVE AND RELIABLE  
LOCAL SERVICE**

**HUGO SEELY 01295 780355**

**FREE NO-OBLIGATION ESTIMATES**

**No job too large**

**Excellent local references available**



Personalised design service and consultancy in  
your own home.

Beautiful bespoke Curtains, Roman & Roller  
Blinds & Soft Furnishings, handmade to the  
highest standard.

Advice on every kind of Fabric from numerous  
suppliers.

Stylish complimentary Cushions & Loose  
Covers.

Re-upholstery service.

Custom made Bedspreads & Headboards.

New Sofas & Chairs

Tel/Fax: 01295 788145

Email: [info@annwoolgrove.com](mailto:info@annwoolgrove.com)

[www.annwoolgrove.com](http://www.annwoolgrove.com)



## NEIGHBOURHOOD WATCH

**The Green Cross Information Scheme** is for any resident of any age needing regular medication. It could save valuable time if there is an accident or emergency situation. It is supported by the Emergency Services and is free and private. For more information please contact *your* neighbourhood Watch member or Mollie Mulley tel. 01295 780629.

It is now the summer holidays. An ideal time for unwanted visitors who are up to every trick.

Please look after your neighbours. Make sure the post and papers are not left in the door or parcels left on the doorstep. Never inform strangers when asked if neighbours are away or-out.

Be careful to shut windows, lock doors, garden sheds, garages and vehicles when they are out of your sight.

It is important to check the identity of callers if they -ask for access to your property. Never ask them for their employer's telephone number. Close the door, check the number and phone the employer. Con men frequently claim to work for the Water Board or similar body.

Police advice is never to buy or sell at the door or allow people who knock on your door to undertake work on your property.

Beware of telephone scams. Never give out any personal or bank details.

**Be Aware** recent warnings have included:

Distraction burglaries, during past summers children have also been used. Tool thefts from vans. Petrol removed from vehicles.

If you see anything suspicious phone the Police with as much detail as you can of the person or people involved, vehicle being used and registration number if possible also their direction of travel. Police tel. 08458 505 505.

If anyone in Sibford Ferris is interested in setting up a Neighbourhood Watch Scheme phone the Police 08458 505 505 and ask for Mrs. Deborah Tonks, the Neighbourhood Watch Manager.



**Zoe Andrews**

Registered Childminder

Daytime and wrap-around school childcare

Vacancies for children 6 months to 9 years  
- local drop off/pick up -term time-  
school holidays - great facilities-large  
garden-pets-strictly no smoking home  
Please call me on 01295 780174, or email  
at [zoeandrews@btconnect.com](mailto:zoeandrews@btconnect.com)

**BUILDING PLANS**  
**BUILDING REGS. SUBMISSIONS**

\*  
Extensions \* Loft conversions  
Listed Buildings work \* New build

\*  
D.R.BOVILL, B.A.  
DESIGN AND PLANNING CONSULTANT

\*  
Private and Trade enquiries welcome  
01295 788922 [davidbovill@btinternet.com](mailto:davidbovill@btinternet.com)

## To Plan or not to Plan

Sibford Ferris Parish Council have been reconsidering having a Parish Plan. Parish Plans outline the parish and its communities, current amenities and its future development. The District and County Council will take what is in a Parish Plan into account when they are dealing with strategic planning which affects that parish. At the moment neither the Ferris nor Gower has a Parish Plan. We have been told that Parish Plans need to consult all sections of the community on the content of the Plan and should be led by a group other than the Parish Council. At the last two Annual Parish Meetings this has been raised with no volunteers to take a lead and get this off the ground. It would be greatly appreciated if anyone would like to get involved and help as the Parish Council have now decided that the only way forward is to write a draft plan which, naturally enough will be from a Parish Council perspective.

Volunteers please contact the Editor.

### Miss 'T' Catering.

Catering for events such as:

Anniversaries, Weddings,  
Christenings, Birthday parties,  
Funerals

And private dinner parties.

~.~.~

Also available

Cutlery and Crockery Hire.

Contact Victoria Taylor on:

Mob: 07841 910037

Home: 01295 788924

O  
P  
U  
S

### Alan Berks

SPECIALIST INSTALLER

Kitchens and Bathrooms

Natural and handmade

floor and wall tiles

Solid wood flooring

01295 780652

07816 592 124

Alan.berks@btopenworld.com

The Spinney

Sibford Gower, Banbury, Oxon, OX15 5RS

### Oxon Computers

Qualified PC Engineer

Danny, Company Owner

PC repair, maintenance & configuration

Tel: 01295 788766 Mobile: 07767 025752

Fax: 01295 788766

Email: Admin@oxoncomputers.co.uk

www.oxoncomputers.co.uk



QUALITY FISH DIRECT

FROM

Proprietor: T.P.Martin

Tel: 07812 361853

GRIMSBY MARKET

Best fresh fish and shell fish to your area

direct from Grimsby on the

Lincolnshire coast

I'll be at Sibford Village Hall car park

**EVERY MONDAY from**

**approximately 4pm till 5.30pm**



## Sibford Horticultural Society

**Annual Horticultural and Produce Show  
on Saturday 29th August at 2.30pm.**

Entries can be made either in advance to any Show Committee member or at the **Entries Evening on Wednesday 26th August** from 7.00 - 9.00pm in the Village Hall.

If you have a cup from last years show please ensure that it is returned on or before entry night

There is something everyone can enter from potatoes to photographs and cakes to cross stitch, from flower arranging to the 'best weed in the garden', not forgetting the ultra competitive men's cookery class - this year it's tuna puff pasties - and the children's sections which include cooking, photography, flower arranging and model making. Please take the trouble to find something to enter as we can only have a show if you do. Can every member please contribute to the Bottle stall and Cake / Produce stall. Any contributions from elsewhere will be most welcome.

**Our show can only be a success if you enter**

**REIKI**  
HEALING FOR HUMANS  
AND ANIMALS

**LYN SIMMS**  
MASTER PRACTITIONER

**01295 780 655**

**Jay 'T' Disco's**  
Music for any occasion  
LOCAL DJ Contact Jason on  
PHONE:  
07949336625  
EMAIL:  
**JASONWT@HOTMAIL.CO.UK**

**FRANCIS MORDAUNT MCFHP MAFHP**

*Member of the Open College of Foot Health Professionals  
Member of the British Association of Foot Health Professionals*

**FOOT HEALTH PROFESSIONAL**

To enquire about a home visit please

telephone: 01295 730615

Professional Foot Care in Your Own Home

**Richard Wallington**

Builder

Block Paver Drives a Speciality

Also Extensions, Patios

Fencing etc.

High Quality Work, Free Estimates

01295 780705 07743 932545

(Sibford Gower) (Mobile)

## WELCOME TO SIBFORD

If you are a new resident of Sibford and have not yet received a copy of the "Welcome to Sibford" booklet, please telephone Pauleen Inns on 780702(Gower or Burdrop) or Ann Bishop on 788188 (Ferris), and a copy will be delivered to you. The information will help to make you feel at home - by acquainting you with the services, schools, clubs and societies that are currently active in the villages.

This month we welcome Sandra and Gareth Price who have moved to Riverdale House in Ferris Court, Sibford Ferris. They have come here latterly from Cropredy, but have spent most of their family life in Frimley. Sandra and Gareth have two grown up children, and have decided to move here in semi-retirement, but look forward to playing a positive part in the community!

## HOLY TRINITY CHURCH NEWS

The Annual Church Fete was held at the Village Hall on Saturday 25<sup>th</sup> July, and we were blessed with bright and warm sunshine in the midst of a wet and uncertain period. The fete was opened by Dr David Spackman and introducing him, comment was made of the wonderful service supplied to the village and area by him and by Dr Emma Haskew, the nurses, the pharmacists, the receptionists and all involved with the surgery. With an Edwardian theme for the fete, there was a remarkable selection of suitable dress from which to choose and Dr Spackman was later rewarded with the prize of best dressed Edwardian by the judge Mrs Pearlman. Despite being such a beautiful day and probably due to many being away on holiday, the numbers present were not quite as great as in former years. Nevertheless a most happy atmosphere prevailed which resulted in a great financial success and thanks are due to all present who spent so generously, to the stallholders, to those donating

### LOCAL HONEY

USUALLY AVAILABLE

*Bill Wealsby*

Tel:01295 788405

Swarms of bees wanted




#### FARMHOUSE

#### BED AND BREAKFAST

#### GRANGE FARM, SWALCLIFFE

•Enjoy warm hospitality & peaceful surroundings in our comfortable 18th C Farmhouse

CONTACT BARBARA TAYLOR  
TEL.01295 780206 or 0771 2895728  
[WWW.swalcliffegrange.com](http://WWW.swalcliffegrange.com)



Contributions for the  
October  
Sibford Scene  
to the Shop or Editor by  
September 15th

money and goods and to the Inland Revenue for much Gift Aid tax. The total so far, with one or two promised donations yet to come in, is a remarkable £1,991.19.

The Harvest Festival service will be held on Sunday 11<sup>th</sup> October at 11.00 am and will be followed by Harvest Lunch in the Village Hall. As usual, the lunch will be on a bring and share basis and it is hoped that many in the parish will attend. It is always a successful and happy occasion and is particularly appropriate for us who live within a farming community. Donations of fruit and vegetables with which to decorate the church, would be much appreciated on Saturday 10<sup>th</sup> and these will afterwards be donated to charity.

The Coffee Morning held in Sibford Church on Saturday July 18<sup>th</sup> was the usual great success and raised nearly £150 which will all help keep the church building going.

The joint Benefice Council meeting was held on July 15<sup>th</sup>. Reports were received on the activities and services of each of our six parishes and there was considerable discussion of the hoped for continuation of the employment of our youth worker Jon Cardy. For some years, Jon has been working part time at The Warriner School who provide him with an office. Students and their parents alike are vocal in praise of the work he does amongst them. He has been immensely helpful with the many problems of both students and parents and many are recognizing the practicalities of the Christian point of view. It was felt that parishes must make their own decisions on the required increase of their financial support which is very much hoped will be forthcoming as he can only rely on the churches in the Deanery for this.

The Family service on 12<sup>th</sup> July had as its theme Sea Sunday. This was very well designed and presented by Erica Wimbush and Robin Spicer and there was an outstanding presentation of the story of Noah and the Ark through the words of "Arthur the Angel" alias James Wimbush, complete with mobile telephone and conversations with The Almighty and various prophets. It is very much hoped that we will hear more from Arthur on future occasions.



**Sarah Walker**

**Vivienne Nott**



*fresh flowers, fresh ideas*

*Gorgeous bouquets & arrangements*

*Wedding bouquets, churches,*

*marquees and receptions*

*Flowers for supper parties,*

*house parties and celebrations*

*Funerals and memorials*

*Contact :*

*Sarah :01295 788595 Viv:01608 652819*

**Bed & Breakfast**

**AGDON FARM**

**Nr Brailes**

**Comfortable rooms**

**in old stone farmhouse**

**Tel: Maggie Cripps**

**01608 685226**

## Church Services

Society of Friends Sunday at 10.30 am  
Methodist Sunday at 11.00 am  
Roman Catholic Mass Wroxton Sunday at 9.00 am  
Brailes Sunday at 11.30 am  
Baptist Hook Norton Sunday at 10.30 am  
Church of England, Holy Trinity, Sibford Gower.

August

Sun 2nd Benefice Service at Tadmarton 10.00am

Sun 9th Matins 10.00am

Sun 16th Holy Communion 9.30am

Sun 23rd Holy Communion 9.30am

Sun 30th Matins and Holy Communion 9.30am

September

Sun 6th Benefice Service at Broughton 10.00am

Sun 13th Holy Communion 8.00am and

Family Service and Baptism 10.00am

Sun 20th Holy Communion 9.30am

Sun 27th Holy Communion 9.30am

October

Sun 4th Benefice Service at Epwell 10.00am

Sun 11th Harvest Festival 11.00am followed by lunch in the Village Hall.



### RED HORSE VALE LTD

All Types of Fuel, Coal, Smokeless, Gas,

Logs, Kindling, Barbecue Needs

Central Heating Oil, Oil Tanks & Coal Bunkers

Landscape & Building Materials, Garden Centre  
& Garden Supplies, Farm & Country Sundries

Equestrian Products, Horse & Pet Feeds

Open: Monday - Saturday 8am - 5pm

Windmill Farm, Banbury Road (A422),

Oxhill, Warwickshire CV35 0RP

Tel: 01926642832

Fax: 01926 642 853

## Found

A sum of  
money in the  
Village Hall  
Please contact  
01295 780025

# Sibford Bus Services

## Cherwell Rural Dial-A-Ride Scheme

A mini bus with tail-lift to take **elderly or disabled people** and escort to Banbury (max fare £1.60) Door-to-Door service. Book at least one day in advance. Operates on Wednesdays & Thursdays. Phone 263777 for details.

BCTA also takes bookings for groups of 8 or more on a weekly/monthly basis (Wednesdays & Thursdays) to and from Banbury. Tel; 263777

## Stagecoach – Timetable commencing 31<sup>st</sup> May 2009 Mondays to Saturdays (No services on Sundays or Public Holidays)

### Bus 50A. From Banbury towards Stratford-upon-Avon

Banbury, Bus Station	08.30	10.55	12.45	14.26	16.05	17.10	18.10
Sibford Ferris, Cross Roads	08.52	11.17	13.07	14.48	16.27	17.32	18.32
Sibford Gower, School	08.55	11.20	13.10	14.51	16.30	17.35	18.35
Shipston,	09.15	11.40	13.35	15.11	16.50	17.55	18.55
Stratford on Avon, Wood St.	09.40	12.09	14.04	15.40	17.19	18.24	19.24

### Bus 50A. From Stratford-upon-Avon towards Banbury

	NS						
Stratford on Avon, Wood St	06.20	07.10	09.05	11.10	13.10	15.10	16.24
Sibford Gower, School	07.04	07.55	09.56	11.56	13.56	15/56	17.14
Sibford Ferris, Cross Roads	07.07	07.58	09.59	11.59	13.59	15.59	17.17
Banbury, Bus Station	07.28	08.25	10.21	12.21	14.21	16.21	17.39

NS = Not Saturdays

All buses will operate low floor wheelchair accessible vehicles.

For complete details of all the stops that are served by service 50A, timetables are obtainable from bus drivers and Sibford Stores & Post Office.

Fares:-

Sibford Ferris & Sibford Gower to Banbury: Single £2.30 (Child£1.15)  
Return £4.40 (Child £2.20)

Sibford Ferris & Sibford Gower to Stratford: Single £4.00 (Child £2.65)  
Return £6.00 (Child £4.00)

Seven days unlimited travel £20.00

Twenty eight days unlimited travel £76.00

# Calendar of Events

## August

- Wed 5th National Playday Event at Cotswold Close Playarea. 2.00pm p12
- Wed 5th Mobile Library in the Sibfords (2.40 - 4.10pm)
- Wed 19th Mobile Library in the Sibfords (2.40 - 4.10pm)
- Thu 20th Sibfords Society Re-Scheduled Evening Stroll 7.00pm p6
- Sat 22nd Charity Run / Walk in Tadmarton p6
- Sun 23rd Charity Horse Ride in Tadmarton p6
- Wed 26th Horticultural Show Entry Night 7 - 9pm at the Village Hall p15
- Sat 29th Horticultural Show 2.30pm at the Village Hall p15

## September

- Tue 1st Friendship Club meeting "Little Boxes" p4
- Wed 2nd Mobile Library in the Sibfords (2.40 - 4.10pm)
- Tue 8th W.I. Talk on "Habitat for Humans" p5
- Sat 12th Historic Churches Trust Ride and Stride p13
- Tue 15th Friendship Club Outing to Hill Close Gardens p4
- Tue 15th Dance Classes Start again at the Village Hall. P13
- Tue 15th Deadline for contributions to the October Sibford Scene p20
- Wed 16th Mobile Library in the Sibfords (2.40 - 4.10pm)
- Wed 16th Sibford Gower Parish Council Meeting p10
- Thu 17th Sibfords Society. "Local Families and the Gunpowder Plot" p6
- Fri 18th Walk in aid of Maggie's Centres. P7
- Sat 19th Murder Mystery Night at the Village Hall from 7pm p11
- Wed 30th Mobile Library in the Sibfords (2.40 - 4.10pm)

Cover picture. Looking up hill from the Village Shop, Sibford Ferris

### Sibford Scene

Editor; Adrian Lamb. Grounds Farm, Sibford Ferris. 780380  
e-mail [adrian.lamb@care4free.net](mailto:adrian.lamb@care4free.net)

Treasurer; Timothy Wimbush, The Rectory, Acre Ditch, S.Gower  
780555

Advertising; Ivor Hopkyns, Elmridge Farmhouse, Sibford Gower,  
Banbury, Oxon. OX15 5RT. Tel 788367