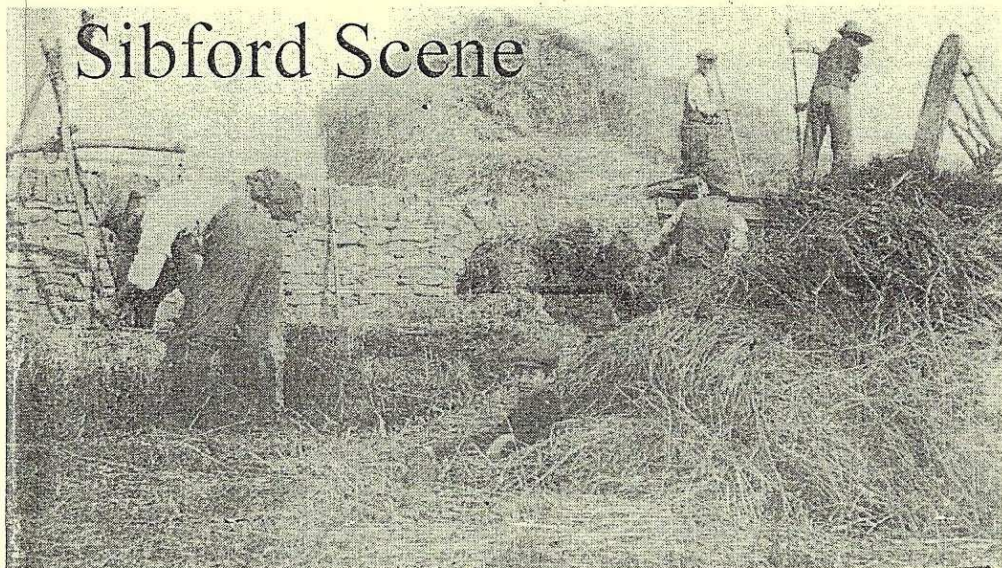


Sibford Scene



October 2008

No. 306

5

Katharine House Hospice Jumble Sale

**Saturday
October 11th 2pm
Sibford Village Hall.**



**Sibfords Society talk on
Bess of Hardwick and
Hardwick Hall
Thursday 16th October
Village Hall 8.00pm.**

Nature Notes

July 30th. I noticed that there were some malformed flowers on a greater knapweed in our paddock and then saw that the plant had two spikes of knapweed broomrape growing by it. I suppose that as it is a parasitic plant that draws its nourishment from the roots of the knapweed it might affect the flowers. I also saw one by the road to Traitors Ford yesterday. We also have some ivy broomrape in bloom at the moment.

Aug 1st. Today we found a wasps nest which had been neatly dug out by a badger showing how beautifully spherical the nest had been. I marvel at how wasps can remove a quantity of soil to almost the size of a football. I suppose they keep taking particles of soil away and bring back wood pulp to gradually expand the nest.

Aug 12th. We have a wasp nest in our chimney and some wasps and a few wasp grubs are appearing in our sitting room so I may have to get rid of that one.

Sept 6th. An unusually dark, almost charcoal coloured, fallow deer crossed the road in front of us near Traitors Ford.

Sept 13th. What a harvest. I don't think I can recall a worse one although I have been reminded that 1968 was a bit of a nightmare. This year we had 4.63 inches of rain in August making it the wettest month of the year but this month I have measured rain every day and have already passed the 4 inch mark. I shudder to think what a disastrous harvest it would have been before the days of the combine harvester. If we were still cutting it with a binder and standing the sheaves together in shocks I doubt whether any of it could have been carried and ricked by now and the soggy sheaves would have been growing green along the top of each shock. As it is, the big problems are the drying of the grain and that the quality will have suffered, down grading much of the

Lodge to Let, Cornwall/Devon borders

Slps 8/10 in four bedrooms, fitted kitchen, bathroom, shower room,

Panoramic views, in quiet position.

Facilities include indoor/outdoor pool, tennis courts. Dogs permitted.

Excellent base for North and South coast beaches, National Trust, Devon, Dartmoor and Plymouth. Very reasonable rates: call

Sue Lovatt on 01295 788848. email: lovfam@btinternet.com or

pick up leaflet in the Ferris shop.

wheat from milling to animal feed glutting that market and lowering prices. However drier weather is forecast.

Sept 14th. This is the first morning this month without measurable rain.

Katharine House Hospice Jumble Sale

Saturday October 11th 2pm
Sibford Village Hall. Adm 30p

All usual stalls, many bargains to be had!

also KHH Xmas cards, calendars.

Raffle/Tombola Refreshments & more. See you there!

Any donations for this worthwhile cause can be left with, or collected by Bernie & Andrew Jones 780343.

Thank you for your support.

GODSWELL NATURAL THERAPY CENTRE

*Godswell Lodge, Church Street, Bloxham
Banbury, Oxon OX15 4ES*

Acupuncture, Alexander Technique,
Aromatherapy, Art Therapy,
Chiropody, Chiropractic,
Counselling & Psychotherapy,
Cranio-sacral therapy, Homoeopathy,
NLP, Nutrition, Physiotherapy,
Reflexology, Remedial Massage,
Reiki, Spiritual Healing,
Shiatsu, Yoga.

*Fully qualified professional therapists
For information Ring 01295 720347*

A. Sabin

LOGS

Millbarn, Hook Norton

Telephone 01295 788421

Mobile 0781 7709044



FOLLY FARM BACK PAIN CLINIC

Gentle but effective treatment

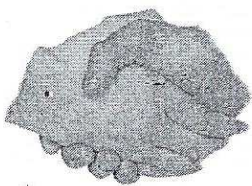
Aches & Pains?

I can help you!

Just visit the local clinic between
Sibford & Swalcliffe

Contact: **John McArthur**
B.Sc. & Dip (Chiropractic)
McTimoney-Corley Practitioner
(M.A.M.C.S.T.)

Tel: 0845 862 4 862 (local rate)
Mob: 07740 404 678



Friendship Club

Welcome to October. Our first Meeting is on TUES. 7th, when Margaret Rees will telling us all about Corn Dollies, also we shall be having a go at making them ourselves. On October 21st there will a trip. More on that on the 7th. At the end of Sept the club celebrated the birthday of Bea Tanner who was ?? years old. We all wished her a Happy Day, and last but not least it was nice to see Alice back among us.

Dear Editor

I would like to say a sincere thank you to all my friends and neighbours in Sibford who helped and supported me during the last few months and visited me during recent stays in hospital.

I have now settled into my new home at Brackley Fields Care Home in the Halse Road in Brackley. I hope to keep in touch and see you all from time to time.

Kinds Regards, Mrs Pat Doolan

Sibford Stores & Post Office
Sibford Ferris
OX15 5RG

Telephone 01295 788317 / 788348

YOUR LOCAL CONVENIENCE STORE AND NEWSAGENT

We deliver newspapers and magazines 7 days a week to all the surrounding area. Place your regular order today, whether for 1 day a week or 7. Always a wide selection of magazines available, specialist titles available to order.

Chilled & Frozen foods, groceries, cigarettes, beers, wines and spirits, fresh fruit and vegetables, pet foods, household goods, toiletries & medical requisites and lots, lots more.....

National Lottery, Photocopying, fax service, dry cleaning & buffet lunches. We will also undertake your mailings for you, just speak with Terry or Judith.

Always an excellent selection of Hook Norton bottled beers in stock.

Telephone your grocery order for free local delivery.

OPENING HOURS

Monday to Saturday 5.00am to 6.00pm

Sunday 5.00am to 1.00pm

PLEASE SUPPORT YOUR LOCAL POST OFFICE, THERE ARE LOTS OF PRODUCTS AND SERVICES AVAILABLE ON YOUR DOORSTEP



**Women's
Institute**

Sibford W.I. Meeting — Tuesday, 9th September 2008

Although a number of Members were on holiday, President Glennis Hardman was pleased to welcome eighteen plus two guests, Caroline Jennings and Sue Nottingham. A lengthy list of business was dealt with swiftly. Mention was made of the Coach Outings that took place over the Summer months — Savill Garden, Coughton Court and Bath. In this rain drenched season, we were very fortunate to have fine weather on each occasion. Our speaker, Gillian Hawtin, cheered up a chilly and dull afternoon by demonstrating the creation of three beautiful flower arrangements. We were impressed by the ease with which she chatted and at the same time fully concentrated on her art. She told us that floristry was not her first choice of career. After gaining a degree in geography and having enrolled to take a teacher training course, she suddenly decided that flowers rather than children would be more desirable to her! After qualifying as a florist, she acquired a shop in Kineton and proceeded to build up a most successful business. Mainly during the Summer Months, she specialises in weddings and keeps busy in Wintertime with Christmas, Valentine's Day, Mothers' Day and Easter. She also supplies lovely floral tributes for funerals. Although she employs a number of staff, she is very "hands-on" in her well stocked shop of cut flowers, plants and gifts giving a personal service. She works very long hours but says that her passion has not faded over the years. She showed us how to make a beautiful hand tie using purple and pink flowers followed by a round arrangement featuring a variety of greenery with pink roses and carnations. Her final front facing arrangement turned our thoughts to Autumn with the use of shades of bronze and orange. Three lucky raffle ticket winners were delighted to take the flower arrangements home.

Val Powell, herself a keen flower arranger, gave a charming vote of thanks saying that Gillian had given us a delightful afternoon and had imparted many useful tips. Gillian judged the competition entries for a miniature arrangement. She awarded first to Jane Martin, second to Glennis Hardman and third to Val Powell. Greta and Jane served a delicious tea with iced cup cakes and coffee sponge.

At our Meeting on 14th October, Frances Gittens will teach us how to keep fit without getting up from our chairs! Competition — A Personal Aid. Visitors always welcome. Village Hall-- 2pm.

Glennis Hardman

THE VILLAGE SHOP HOOK NORTON

NATIONAL LOTTERY

Grocery - Greengrocery - Bakery
Wines - Spirits - Confectionary
Newspapers - Magazines - Cards
Video Rental - Bottled Gas
Open Monday to Friday

7 am to 8 pm

Saturday 8 am to 8 pm

Sunday 8 am to 6 pm

Telephone: 01608 737245

To begin the Autumn programme, David Smith spoke to us about 'Country Life Remembered', with some wonderful slides of old photographs he obtained from the Reading University Archive, showing many different occupations and ways of life between 1850 and 1950. Before modern machinery,

rural workers had a hard time, working outside in all weathers, doing all the work manually. Gradually, basic machinery was introduced but still had to be worked by hand or pulled by oxen. Oxen were used extensively until the 1900's and the ploughman would sing as they were working and when he stopped singing, they came to a halt!. Then horses were introduced to take over the heavy work, taking seven years to train and worked for a further seven years. Incredibly, wheat and barley were still sown by hand up to the 1940's and crops had to be

hoed by hand, with a row of men working alongside each other, as there were no herbicides to kill the

TREES

WE'RE THERE FOR TREE CARE

All aspects of tree care undertaken
Specialising in reduction/removal of
trees in confined spaces
Supplier of logs & chippings
Over 20 years experience
Fully Insured

For a free quote and a chat please
contact:

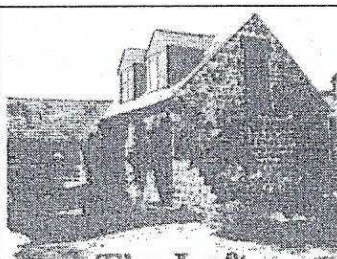
Arthur White (The Tree Chap) 01295 788549

FOR SALE

Modern Upright Piano
Barrett & Robinson (English 1980's)
Will require tuning. Buyer collects
£250

Fridge/Freezer
(approx 4'6" high)
Colour Beige
Buyer collects
£50

Both items in Sibford Gower
Contact Ruby Lawrence
01202 888438



The Loft at Forge House

Visit Britain 4 ♦

Bed & Breakfast
or Self Catering Apartment
with double bedroom

Carole Ralph

The Loft at Forge House
Old Forge Yard, Swalcliffe,
Oxon OX15 5EH

Tel & Fax: 01295 788677

Email: stuart@forgeyard.freeserve.co.uk
http://mysite.wanadoo-members.co.uk/the_loft

weeds then. Very organic and much better for everyones health!

DVD We are still taking orders for the DVD, priced £5, of the Sibford Club Day Re-enactment, when so many of you joined the procession, wearing Victorian costume, so if you would like a memory of that very enjoyable event, phone Maureen on 780259.

The next meeting will be held on Thursday, 16 October at 8.00pm in the Village Hall, when Dr. Gillian White will speak to us about 'Bess of Hardwick and Hardwick Hall'. Visitors and new members are very welcome to attend any of our meetings, so do come and join us.

Many Thanks

to all our friends who made donations to the Katharine House Hospice in memory of Bernard Phillips.

We were able to send £745 to help the Hospice in its work.

Evelyn Phillips

Maureen Warden

I would like to thank all Maureens Friends for their many cards and letters, expressing sympathy and offering help following her sudden departure.

Ian.

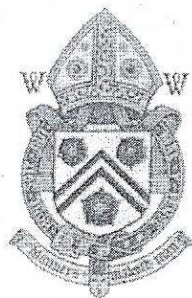
DAMIAN AND DEBBIE WELCOME YOU TO

THE WYKHAM ARMS

Temple Mill Road, Sibford Gower, Nr. Banbury OX15 5RX

Tel: 01295 788808

Quiz Night
on First Sunday of the Month
'Hooky Night' Wednesday
evening 6.00 - 7.30 pm
(Beer, Lager, House Wine)
Wi-Fi Hotspot Service
Bar only Sunday Night, Closed
All Day Monday



Fantastic Family Sunday
Lunch
(Booking advised)
Freshly prepared
local produce.
Opening Times
11.00 am - 3.00 pm
6.00 pm - 11.30 pm

www.wykhamarms.co.uk

email; info@wykhamarms.co.uk



Sibford Pre-School: Tots and Babes

Sibford Pre-school is opening a Tots and Babes morning every Wednesday and Thursday from 9.30am to 11.30am. We are located in a purpose built, bright and airy hall within Sibford Village Hall, with a dedicated and enclosed outdoor play area. Why not come along with your child/children and meet other parents/carers for a chat, a coffee, and let the children play!

Sibford Pre-school has not been able to re-open as a Pre-school this academic year due to the low number of children attending the setting. However, it is hoped by opening the Tots and Babes facility, it will encourage more children will come and enjoy the great facilities we have. As our numbers increase we would like to re-open the Pre-school for the older children. We will continue our link with Sibford Gower Primary School.

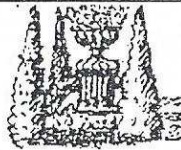
Please contact Nicki Kitchen on 01295 780633 or during the Tots and Babes session on 01295 780998 if you need any further information.

SPONSORSHIP WANTED FOR THE SIMULATED ROUND THE WORLD FLIGHT IN AID OF THE WNAA (Warks & Northants Air Ambulance)

I would be very grateful If you can sponsor me for the flight. If you wish do do so, contact me or leave your sponsorship at Sibford Stores or use the donation box in the shop or visit justgiving.com/andrewjamesharrison for online donations.

Many thanks for supporting me. Andrew at Sibford Stores

Sheila Job LCH
HOMŒOPATH
EFT PRACTITIONER
For all health problems
01295 780468



BED & BREAKFAST

Buttslade House Cottage (Sibford Gower)
offers comfortable accomodation with
en suite bathroom overlooking a tranquil
English country garden.

Contact Diana Thompson
(01295) 788818

or janthompson50@hotmail.com
www.buttsladehouse.co.uk



The Horticultural & Show Committee would like to thank all who helped make the flower show such a success, those who helped in putting tents up and setting up on Friday all who ran stalls and games, those who helped with teas, lent us tents and helped with the clearing up on Saturday, also our thanks to all the judges who came and judged all the classes. We were just so lucky with the weather which made it so much more enjoyable. We all hope that every one who came enjoyed the afternoon. The date for next year is August 29th. Our first indoor meeting saw Gerald Sinclair from the Nursery Further Afield talk about Summer Perennials, illustrated with some lovely plants, (most of which got bought at the end of the evening) and are now all cognisant with the "Chelsea chop" (you had to be there). Our next meeting is on Wednesday 8th October at 8pm in the Village Hall which is our AGM (subs will be due) followed by Tim Miles from the Cotswold Wildlife Park talking about their beautiful grounds and stunning displays of exotic bedding. All welcome.

Cup Winners from the
Flower Show were;

Sibford Rose Bowl - Mike Clarke

Albert Spicer Trophy - Andy Newbold

The Society Cup - Bill Wealsby

Mrs. F Padbury Cup - Glennis Hardman

Dr. Taylor Cup - Sally Wass

Ted Webb Trophy - Pauline Inns

Mrs F Padbury Rose Bowl - Valerie Law

The Village Cup - Kathleen Winter

John Sabin Cup - N Durrant

The Junior Cup - Kit Lamb

Keith Hicks Cup - Harry Berks

SJ Sabin Cup - Milo Donovan

Committee Cup - Diana Thompson

Roger Powell Cup - Jane Martin

C.A. Berger

painting & decorating
interiors & exteriors
residential & commercial

Mobile: 07875 212 315

Office Tel: 01295 780 140

Half Loads

LOGS

Full Loads

Very Competitive Prices
Seasoned Hardwood Logs
Basil Page 01295 780215
Fencing Jobs Big or Small

Sibford Stores and Post Office News

Last Posting Dates for Christmas

We are already aware of these dates and many countries have a last recommended mailing date for surface mail in early October! Christmas stamps are available from 4th November 2008, in good time for any items being posted by Air Mail. Ask at the counter for specific dates for any country. We aim to provide a posting service 7 days a week so everyone can avoid the 4.00 o'clock rush.

Electric Key Charging

We are now able to offer this service at anytime that the shop is open, from 4.30am onwards, so you should never be left in the dark. We can also offer **Mobile Phone Top Ups** whenever the shop is open, there's no need to wait for the Post Office to open.

Frozen Fish

Many of you have already sampled our new line of 'fresh frozen' fish. The range is quite varied and includes cod fillets, king prawns (both raw and cooked), tuna steaks, haddock Florentine, lemon sole, smoked haddock and many more. We are trying to keep a selection in stock but any special requests can generally be obtained on a Friday. Ask in the shop for a full list of fish available.

The Firs Garage

? All makes vehicle servicing

? Competitive prices

? Factory trained mechanics

? MOT ? Parts ? Bodyshop ? Fuel

? Large site with easy parking



? Extensive range of new and used vehicles

Hook Norton, Oxon. OX15 5DD (1 mile North of Hook Norton village)

Tel: 01608 737349 / 737641

www.firs-garage.com

Family Business Established 1960

The Warriner Choral Society

Dank, recessionary August splatters into Similar September. By the time you read this shall October have even *glinted*? Where be the cymbals, songs and sunlight for the suffering soul?

REJOICE! **Warriner Choral Society** under Musical Director Martin Quinn present THREE JOYFUL WORKS! From the 'blistering brass' which opens John Rutter's *Gloria* to the 'great peal of Alleluias' that closes his *Winchester Te Deum* we can promise an evening of *jubilant music*. Voice, brass, percussion and mighty organ will resound the rafters in these and in Bob Chilcott's *Jubilate* - a remarkable new *joyous* composition.

You will hear them at the Church of St Peter & St Paul, Deddington, on Saturday 15th November commencing at 7.30 pm, with refreshments during the evening. Tickets (£8 and £7 concs) obtainable from Hamptons International Deddington, One Man Band Banbury, Bloxham Post Office, Jenny on 01295 721224, or on the door. (www.warrinerchoralsociety.co.uk)

Serenity at Sibford Gower

01295 788463

(Between The Wykham Arms and Temple Mill)

Bring this advert for a 10% discount!

- * Guinot Facials * Massage - sports and relaxing
- * Waxing & Electrolysis * Manicures & Pedicures
- * Eyelash Tinting * Monthly Botox Clinic
- * Make-up Lessons

Recommend a friend to our salon and you
both receive a 10% discount!

WELCOME TO SIBFORD

If you are a new resident of Sibford and have not yet received a copy of the "Welcome to Sibford" booklet, please telephone Pauleen Inns on 780702 (Gower or Burdrop) or Ann Bishop on 788188 (Ferris), and a copy will be delivered to you. The information will help to make you feel at home - by acquainting you with the services, schools, clubs and societies that are currently active in the villages.

Sibford Quaker Meeting House

You will find a leaflet about the Meeting House Appeal enclosed with this copy of the Scene and we hope that some parishioners will feel able to support us. The Meeting House is the oldest place of worship in the parish, and besides its use as a meeting place for Quakers over the years, has proved a place of peace and tranquillity for many others. It is open in daylight hours and anyone is welcome to spend time there, or in the grounds which surround it.

In the leaflet you can read about the building work currently being undertaken to make it an even friendlier place. Any assistance would be most welcome.

Oddjob

**CARPENTRY
PLUMBING
ELECTRICS
HEATING INSTALLATION
KITCHEN & BATHROOM FITTING
BUILDING WORKS
SECURITY**

**FOR A COMPREHENSIVE AND RELIABLE
LOCAL SERVICE**

HUGO SEELY 01295 780355

**FREE NO-OBLIGATION ESTIMATES
No job too large**

Excellent local references available

Ann Woolgrove

FABRICS, CURTAINS & SOFT FURNISHINGS

**Handsewn & interlined curtains &
pelmet's our speciality**

Roman & Roller blinds

**Customised design service and
home consultancy**

**Every kind of fabric from many
leading manufacturers**

Decorative Poles, Tie backs & Trimmings

New Sofas &

Chairs -

Loose Covers and

Cushions -

Wallpapers -

Lampshade making -

Custom made

Bedspreads &

Headboards -

Reupholstery Service -

Tel/Fax: 01295 788145

www.annwoolgrove.com

SIBFORD SCHOOL SWIMMING POOL PUBLIC OPENING TIMES

(Monday 8 September 2008 - Sunday 2 March 2009)

... please note time table will change during school holidays ...

visit www.sibford.oxon.sch.uk for up to date information)

Monday	11.45am - 12.45pm	Open Swim
	6.00pm - 8.00pm	Open Swim
	8.00pm - 10.00pm	Adults Only
Tuesday	7pm ~ 9pm	Open Swim
Wednesday	CLOSED	
Thursday	7pm - 8pm	Open Swim
Friday	7.30pm - 9pm	Open Swim
Saturday	12noon - 2pm	Splash Time*
	6pm - 7pm	Open Swim
Sunday	1pm - 2pm	Open Swim
	2pm - 5pm	Splash Time*
	5pm - 6pm	Open Swim



The Firs, Hook Norton, Banbury. OX15 5DD
Email: enquiries@graphics-direct.co.uk
Phone: 01608 730555 Fax: 01608 730271

For all types of Vinyl Graphics & Signage.

Theresa Harper

DESIGNING PRODUCING & FITTING

* Pool Parties can be booked during Family Splash time which can reduce public access to the Pool. We advise you to phone 01295 781254 to check the availability of these sessions.

Zoe Andrews

Registered Childminder

Daytime and wrap-around school childcare

Vacancies for children 6 months to 9 years
- local drop off/pick up - term time -
school holidays - great facilities - large
garden - pets - strictly no smoking home.
Please call me on 01295 780174, or email
at zoeandrews@btconnect.com



BUILDING PLANS BUILDING REGS. SUBMISSIONS

*
Extensions • Loft conversions
Listed Buildings work • New build
*
D.R. BOVILL, B.A.
DESIGN AND PLANNING CONSULTANT
*
Private and Trade enquiries welcome
01295 788922 davidbovill@btinternet.com

Sibford Gower Parish Council Meeting — Tuesday, 29th July 2008

Three Parish Councillors were in attendance with Cllr Martin Layer being away enjoying a well earned holiday. Also present were County and District Cllr George Reynolds to whom the Parish Council is always grateful for his advice, seven members of the public (and it was good to see two relatively new residents) and the Clerk. The following matters were reported. The seat in the Miriam Tebbs' area had been repaired and made safe by Mr Cedric Brown. A letter of sympathy following the death of the late Eric Payne had been received from Sibford Ferris PC. A suitable location is being sought for a seat in memory of the late Bernard Phillips. Cllr Peter Abbott was thanked for keeping the grass verge of the road adjacent to Holy Trinity Church neat and tidy and also for his involvement with the Cotswolds Conservation Board. Cllr Martin Layer had attended the Cherwell Parishes Meeting on 18th June and his detailed report had been read by the other Parish Councillors. Since the previous Meeting three planning applications had been considered and five planning decisions had been received. With regard to Highway

Matters, it has been acknowledged by Charter Community Housing that it has responsibility for the steps leading from Pound Lane to 1 - 6 Pound Lane and the hedge in front of those properties. Turning to Footpath Matters, the "Piggy" path, Burdrop still awaits resurfacing and the Clerk is to press Oxfordshire Highways urging attention. A request has been made of Oxfordshire Highways to lower the kerb at various points in High

Miss 'T' Catering.

Catering for events such as:

Anniversaries, Weddings,
Christenings, Birthday parties,
Funerals

And private dinner parties.

~.~.~

Also available

Cutlery and Crockery Hire.

Contact Victoria Taylor on:

Mob: 07841 910037

Home: 01295 788924

Oxon Computers

Qualified PC Engineer

Danny, Company Owner

PC repair, maintenance & configuration

Tel: 01295 788766 Mobile: 07767 025752

Fax: 01295 788766

Email: Admin@oxoncomputers.co.uk

www.oxoncomputers.co.uk



QUALITY FISH DIRECT FROM

Proprietor: T.P.Martin

Tel: 07812 361853

GRIMSBY MARKET

Best fresh fish and shell fish to your area
direct from Grimsby on the

Lincolnshire coast

I'll be at Sibford Village Hall car park

EVERY MONDAY from

approximately 4pm till 5.30pm

Meadow to make life easier for wheelchair users. This has been promised but only when funds are available. A replacement on the Council for the Late Eric Payne is sought and an item inviting interested parties to seek further information appeared in the July edition of the Sibford Scene. Mrs Glennis Hardman reported that the village pond is coming along quite nicely. Plants in the pond have to be reinstated from time to time and the wild flowers in the border at the rear of the pond just require time to become established. With regard to the erosion caused by parked vehicles to the grass verges adjacent to the pond, it is hoped shortly to arrange a meeting of those residents near to the pond so that preventative measures may be discussed. Again, a plea was made that drivers who have parking facilities to please use them and avoid parking in the pond area. The Clerk advised the Meeting that the metal fencing for the new burial ground will be installed very soon. The Parish Councillors expressed their appreciation of what Mr Cedric Brown does in keeping the Churchyard under control. Mrs Eileen Haynes spoke of the constant watch regarding any activity with regard to the Bishop Blaize. There have been no further developments at this time. The matter of Public Participation was discussed and it was agreed that the present system of allowing members of the public present at the Meeting to speak, by invitation of the Chairman, as various matters arose in respect of the agenda. Under the Any Other Business part of the agenda, reference was made to cars parked and the danger of doors being incautiously opened (not on the pavement side) as school pupils enter and leave the vehicles. The Clerk was instructed to ask our Rural Police Officer to arrange for one of his Community Officers to visit and assess the situation. One other matter was raised and it concerned the hedge at Burdrop Hill which is growing over the footpath Oxfordshire Highways is to be asked to prune.

There being no further business, the Chairman closed the Meeting at 9.25pm thanking all those who had attended.

The next Meeting will be on Tuesday, 30th September 2008 starting at 8pm and be held in the same venue — Sibford Gower Endowed Primary School.

FRANCIS MORDAUNT MCFHP MAFHP

*Member of the Open College of Foot Health Professionals
Member of the British Association of Foot Health Professionals*

FOOT HEALTH PROFESSIONAL

To enquire about a home visit please

telephone: 01295 730615

Professional Foot Care in Your Own Home

Richard Wallington

Builder

Block Paver Drives a Speciality

Also Extensions, Patios

Fencing etc.

High Quality Work, Free Estimates

01295 780705 07743 932545

(Sibford Gower)

(Mobile)

Life Drawing Classes

Master of Fine Arts, John Lendis, who has recently returned to Oxfordshire having spent the summer as Artist in Residence at the Scott Polar Research Institute at Cambridge University, is launching a series of adult education classes.

Held at Sibford School, Sibford Ferris, the Life Drawing classes are aimed at anyone interested in art ... whether an experienced artist or keen amateur. Tuition will be given according to experience.

Classes will take place on Monday evenings between 6.30pm and 8.30pm. Cost is £7.50 per session (£5 for students). Further information is available from the school on 01295 781200.



Jay 'T' Disco's
Music for any occasion


Contact Jason on

PHONE:
07949336625

EMAIL:
DJAYJOE@HOTMAIL.CO.UK



FARMHOUSE
BED AND BREAKFAST
GRANGE FARM, SWALCLIFFE
Enjoy warm hospitality & peaceful surroundings in our comfortable 18th C Farmhouse
CONTACT BARBARA TAYLOR
TEL.01295 780206 or 0771 2895728
WWW.swalcliffegrange.com



Contributions for the
November
Sibford Scene
to the Shop or Editor by
October 21st

REIKI
HEALING FOR HUMANS
AND ANIMALS

LYN SIMMS
MASTER PRACTITIONER

01295 780 655

CASHMORE ANTIQUES

Period Timber Restorer

Beams, doors, floors, furniture repaired and re-coloured by hand with NO MESS
also
brick and stone walls constructed or repaired, paving, terracing, steps, patios, ponds built

01295 788101 or 07733428220


Restorer for 25 yrs - portfolio available

HOLY TRINITY CHURCH NEWS

The last in the series of *Coffee Mornings* will be from 10.00 am to mid-day on Saturday 4th October at Handywater House, the new home of Sue and William Colquhoun. It is particularly generous of them to offer their house into which they have only recently moved, and a great opportunity to see a remarkably designed building. The previous *Coffee Morning* was held in church on 6th September and was the usual success.

Our intrepid cyclists and walkers were unable this year to take part in the *Oxford Historic Churches Trust* Annual Ride and Stride event. This entails visiting as many churches in the area as possible, with each church visit being evidenced by a team on hand, the members of whom also provide refreshments. Petra Berry organized this latter at Holy Trinity and we are grateful to her for this, also to those on her rota who staffed the church throughout the day. We are also particularly grateful to Adrian and Kit Lamb who offered to take our list of sponsors round to the churches as with two of them on their tandem, they only had the Meeting House sponsorship list and felt that two lists were justified. Amazingly, and expensively, they visited no fewer than 39 churches. It is feared that this will give a nasty shock to the generous sponsors, and the muggins who took round the list will no doubt be in for some serious trouble when he goes to collect their offering. There are many church regulars not on the list but there is plenty of time for some of these to add their names. With advance information of the number of churches, they needn't over extend themselves too much. You have been warned! Half the collection goes to our own church and half to the *Trust*, which incidentally was a major contributor when we re-roofed and decorated the church some years ago.

There were very many mourners in church to give thanks for the life of our dear friend Maureen Warden, for so long a worshipper, PCC member and general helper. Her passing was a great shock and sadness to us all, and indeed to the whole community, but mostly of course to Ian and their family to whom we give our sincere sympathy and love and remember them all in our prayers.



Sarah Walker

Vivienne Nott



fresh flowers, fresh ideas

Gorgeous bouquets & arrangements

*Wedding bouquets, churches,
marquees and receptions*

*Flowers for supper parties,
house parties and celebrations*

Funerals and memorials

Contact :

Sarah : 01295 788595 Viv: 01608 652819

Micks Sticks

Fire Lighting Wood For Sale

£2.50 per big bag

Call in anytime and ask for

Mick Canning, at

The Old Malt House,

Sibford Ferris

Tel: 01295 780321

Church Services

Society of Friends		Sunday at 10.30 am
Methodist		Sunday at 11.00 am
Roman Catholic Mass	Wroxton	Sunday at 9.00 am
	Brailes	Sunday at 11.30 am
Baptist	Hook Norton	Sunday at 10.30 am

Church of England, Holy Trinity, Sibford Gower.

October

Sun 5th Benefice Eucharist at Tadmarton 10.30am

Mon 6th Evening Worship 7.30pm

Sun 12th 8.00 am Holy Communion & 11.00am Harvest Festival

Sun 19th Holy Communion 9.30am

Sun 26th Holy Communion 9.30am

November

Sun 2nd Benefice Service at Broughton 10.30am



RED HORSE VALE LTD

All Types of Fuel, Coal, Smokeless, Gas,
 Logs, Kindling, Barbecue Needs
 Central Heating Oil, Oil Tanks & Coal Bunkers
 Landscape & Building Materials, Garden Centre
 & Garden Supplies. Farm & Country Sundries
 Equestrian Products, Horse & Pet Feeds
 Open: Monday - Saturday 8am - 5pm
 Windmill Farm, Banbury Road (A422),
 Oxhill, Warwickshire CV35 0RP
 Tel: 01926642832
 Fax: 01926 642 853

Sports & Remedial Massage

Aid sore, aching
 muscles and
 injuries

Victoria Smith

ITEC DIP SPORTS MASSAGE, VCTC, MIGHT
 01295 780610
 07974 231571

Reflexology Remedial Massage

Elizabeth Webber

MAR.LCSP (Phys)

15 years experience

Godswell Natural Therapy Centre
 Bloxham, Banbury

Tel: 01295 - 788101

Sibford Bus Services

Free Bus Service

Chipping Norton Wednesday 1st & 15th October

Departs 10 am and Returns 12 noon

Pick up points are; The Colony, High Meadow, Cross Roads, Village Hall,
Lanes End Corner & Cotswold Close (Ferris)

Cherwell Rural Dial-A-Ride Scheme

A mini bus with tail-lift to take **elderly or disabled people** and escort to Banbury (max fare £1.60) Door-to-Door service. Book at least one day in advance. Operates on Wednesdays & Thursdays. Phone 263777 for details. BCTA also takes bookings for groups of 8 or more on a weekly/monthly basis (Wednesdays & Thursdays) to and from Banbury. Tel; 263777

BUS 480 - Times from 5th June 2005 - Mondays to Saturdays

From Banbury towards Shipston

Banbury Bus Station dep.	09.00	11.00	12.30	13.30	15.30	17.10	18.10
SIBFORD GOWER School	09.25	11.25	12.55	13.55	15.55	17.35	18.35
Shipston, Tilemans Lane	09.47	11.47	13.17	14.17	16.17	17.57	18.57

From Shipston towards Banbury

	NS		S	NS			
Shipston, Tilemans Lane	06.50	07.45	08.50	09.50	11.50	13.20 17.10
SIBFORD GOWER School	07.12	08.07	09.12	09.12	10.12	12.12	13.42 17.32
Banbury Bus Station	07.37	08.35	09.37	09.37	10.37	12.37	14.07 17.57

Buses serve Sibford Ferris two minutes before the times shown at Sibford Gower towards Shipston and two minutes after the time shown at Sibford Gower towards Banbury.

Notes: S = Saturdays only, NS = Not Saturdays.

Most journeys, where possible, will operate low floor wheelchair accessible vehicles.

Sorry, No services on Sundays or Public Holidays

For complete times at all of the intermediate places that are served by 480 please see new timetables available from bus drivers and in the Village Shop.

The Fare structure has changed: Adult Fare £2.10 each way

Child (5-16yrs) £1.05

Family ticket (2 Adults + up to 3 children) £9.30 return

Calendar of Events

September

Tue 30th Sibford Gower Parish Council Meeting 8pm, Primary School.

October

Wed 1st Mobile Library in the Sibfords (2.40 - 4.10pm)

Tue 7th Friendship Club meeting on Corn Dollies p4

Wed 8th Horticultural Society AGM and talk. Village Hall 8pm p9

Sat 11th Jumble Sale in aid of the Katharine House Hospice. P3

Tue 14th W.I. Meeting - Keep Fit p5

Wed 15th Mobile Library in the Sibfords (2.40 - 4.10pm)

Thu 16th Sibfords Society talk on Bess of Hardwick. Village Hall 8pm p7

Tue 21st Friendship Club Trip. p4

Wed 29th Mobile Library in the Sibfords (2.40 - 4.10pm)

November(part)

Fri 7th Primary School Fireworks and Bonfire Night

Wed 12th Mobile Library in the Sibfords (2.40 - 4.10pm)

Sat 15th Warriner Choral Society at Deddington Church 7.30pm p11

Wed 26th Mobile Library in the Sibfords (2.40 - 4.10pm)

Cover Pictures; Top - Straw baling at Field Barn in Sibford Ferris during the First World War to provide straw for the Armies horses in France.

Bottom - The attractions of shooing oats!

Sibford Scene

Editor; Adrian Lamb. Grounds Farm, Sibford Ferris. 780380

e-mail adrian.lamb@care4free.net

Treasurer; Timothy Wimbush, The Rectory, Acre Ditch, S.Gower
780555

Advertising; Ivor Hopkyns, Elmridge Farmhouse, Sibford Gower,
Banbury, Oxon. OX15 5RT. Tel 788367