

# Sibford School



March 2008

No. 301

## Young Musician of the Year

Saturday 1st March 5.30 pm at Sibford School

---

## Sibford Preschool Open Morning

Tuesday 4th March 10.00 - 11.30 am

---

## Primary School Art Exhibition

Saturday 15th and Sunday 16th March

Ticket only Preview Night Friday 14th

---

## Annual Village Hall Quiz Night

Saturday 29th March 7pm

---

## Parish Litterblitz

Meeting at 10 am at the Village Hall and Lanes End Corner

Saturday 5th April

## Nature Notes

Jan. 19th We had to stop our car near Broomhill Farm this morning while a herd of fallow deer came through the hedge and trotted away down the road for some distance before jumping a fence into the field on the opposite side of the road. There were at least four bucks among the herd of twelve or more.

Jan. 21st Perhaps the male blackcap that was feeding on the apples that we put out for the blackbirds was the same one that we saw in December. It could well spend its winter in the village gardens.

Feb. 2nd Quite a hard frost. I found that the ice on the water tank by our greenhouse had been broken during the night and refrozen. I can only think that a fox or more likely a badger had fallen through the ice and from the amount of water splashed on to the path struggled to get out again. It may be that they are in the habit of drinking there.

Feb. 7th There are quite a few dandelions in bloom near Folly Farm and one had already gone to seed.

Feb. 11th Frosty nights but the daytime warmth brought out a bumble bee to spend a long time feeding from our winter flowering honeysuckle.

Feb. 12th There was a bumble bee on the honeysuckle by 8 o'clock this morning with the temperature at freezing point so it did well to get its body up to working temperature by then. The sun was shining but not onto the honeysuckle.

Feb. 16th Quite a big flock of fieldfares and redwings were spread out over the Friends School playing fields and the adjoining wheat crops this morning. I wondered what they could be getting from the hard frozen ground.

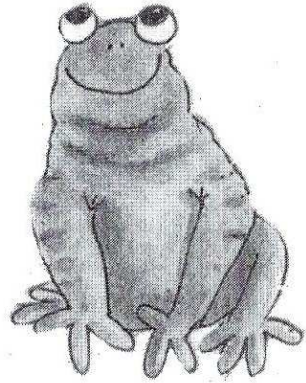
### **Lodge to Let, Cornwall/Devon borders**

*Slps 8/10 in four bedrooms, fitted kitchen, bathroom, shower room,  
Panoramic views, in quiet position.*

*Facilities include indoor/outdoor pool, tennis courts. Dogs permitted. Excellent base for North and South coast beaches, National Trust, Devon, Dartmoor and Plymouth. Very reasonable rates :call Sue Lovatt on 01295 788848. email : [lovfam@btinternet.com](mailto:lovfam@btinternet.com) or pick up leaflet in the Ferris shop.*

## Frog Alert

The promise of Spring is evident with beautiful snowdrops blooming on banks and in gardens and the beginning of March will see the gradual emergence of frogs, toads and newts as they make their way to the village pond and many other garden ponds plus surrounding areas for annual spawning. Unfortunately, their favoured routes are on the roads and pathways. So, may I appeal to motorists, cyclists and pedestrians (best walk with a torch) to try to avoid squashing them. Please take care in Main Street, Bonds End Lane, Barley Close, Colony Road and Hawkes Lane until the end of the first week in April. Numbers were well down last year so we need to be extra vigilant.



Glennis Hardman

### **GODSWELL NATURAL THERAPY CENTRE**

*Godswell Lodge, Church Street, Bloxham  
Banbury, Oxon OX15 4ES  
\*\*\*\*\**

**Acupuncture, Alexander Technique,  
Aromatherapy, Art Therapy,  
Chiropody, Chiropractic,  
Counselling & Psychotherapy,  
Cranio-sacral therapy, Homocopathy,  
NLP, Nutrition, Physiotherapy,  
Reflexology, Remedial Massage,  
Reiki, Spiritual Healing,  
Shiatsu, Yoga.**  
\*\*\*\*\*

*Fully qualified professional therapists  
For information Ring 01295 720347*

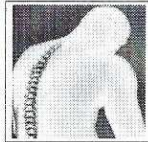
A. Sabin

# LOGS

Millbarn, Hook Norton

Telephone 01295 788421

Mobile 0781 7709044



### **FOLLY FARM BACK PAIN CLINIC**

*Gentle but effective treatment*

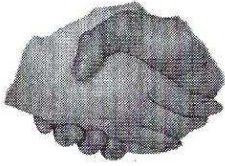
## **Aches & Pains?**

**I can help you!**

Just visit the local clinic between  
Sibford & Swalcliffe

Contact: **John McArthur**  
B.Sc. & Dip (Chiropractic)  
McTimoney-Corley Practitioner  
(M.A.M.C.S.T.)

**Tel: 0845 862 4 862** (local rate)  
**Mob: 07740 404 678**



## Friendship Club

As Easter is early this year, the club will have it's Easter tea on April 1st, "This is no April Fool" I wouldn't dare!!!! More on that at our next meeting. On the day. I expect Easter bonnets on every head, to be judged of course!!!!

Before then, on March 18th we are off to Warwick Museum. I believe we are having a guide to help us along. And for lunch, we are going to Charlote Pheasant for a carvery.

Val will give us more details on March 4th. Our Thanks go to Sandra and her band of tea ladies for the Birthday Party on Feb 19th

### THE VILLAGE SHOP HOOK NORTON

\*NATIONAL LOTTERY\*

Grocery - Greengrocery - Bakery

Wines - Spirits - Confectionary

Newspapers - Magazines - Cards

Video Rental - Bottled Gas

Open Monday to Friday

7 am to 8 pm

Saturday 8 am to 8 pm

Sunday 8 am to 6 pm

Telephone: 01608 737245

Sibford Stores & Post Office

Sibford Ferris

OX15 5RG

Telephone 01295 788317 / 788348

**YOUR LOCAL CONVENIENCE STORE AND NEWSAGENT**

We deliver newspapers and magazines 7 days a week to all the surrounding area. Place your regular order today, whether for 1 day a week or 7. Always a wide selection of magazines available, specialist titles available to order.

Chilled & Frozen foods, groceries, cigarettes, beers, wines and spirits, fresh fruit and vegetables, pet foods, household goods, toiletries & medical requisites and lots, lots more.....

National Lottery, Photocopying, fax service, dry cleaning & buffet lunches. We will also undertake your mailings for you, just speak with Terry or Judith.

Always an excellent selection of Hook Norton bottled beers in stock.

Telephone your grocery order for free local delivery.

#### **OPENING HOURS**

**Monday to Saturday 5.00am to 6.00pm**

**Sunday 5.00am to 1.00pm**

**PLEASE SUPPORT YOUR LOCAL POST OFFICE, THERE ARE LOTS OF PRODUCTS AND SERVICES AVAILABLE ON YOUR DOORSTEP**

### **Sibford Gower Parish Council**

The Parish Council Meeting took place on 31<sup>st</sup> January 2008 with apologies being received from two Parish Councillors. In attendance were County and District Cllr George Reynolds, five local residents and the Clerk. Since the previous Meeting seven planning applications had been considered and eight planning decisions received. Complaints had been received regarding damage by cars done to a grass verge at the lay-by in Pound Lane and the Clerk will speak with the owners, where known. Various footpaths are somewhat impeded by overhanging branches and brambles and, here again, the Clerk will speak with the owners of the adjacent properties. Part of the agenda involved the setting of the precept for 2008/2009. There are one or two uncertain items for this period and they relate to the new burial ground and the maintenance of that part of the Churchyard for which the Parish Council has accepted responsibility. They certainly add to what the Parish Council will need in addition to its known outgoings. A figure of £6,000 was decided upon and should the Parish Council have not the need to call upon it all, any excess will be available to reduce the precept requirement for the following financial year. The Clerk's salary was discussed and, in view of his fully satisfactory performance, the Parish Councillors deemed it proper that it should be increased by one point to the level recommended by Oxfordshire Association of Local Councils and the Society of Local Council Clerks. With Health & Safety in mind, the Parish Councillors considered Cllr Martin Layer's suggestions for good sense guidelines in respect of the Village Pond. Appreciation was expressed for the work and time put in by Cllr Layer and his thoughts were fully accepted and agreed. The guidelines are to be published in the Sibford Scene and sent to local groups who may have cause to visit the pond. A report regarding the current condition of the pond was given by Mrs Glennis Hardman in her capacity of Pond Action Team Leader. All is well and clear at this time of year and it is hoped that the plants put into the pond will bloom with the approaching Spring. Flowers have been planted in the pond's grass verge. The Clerk reported on progress with the Parish Council's recently purchased Burial Ground. The next stage is for the metal fencing to be installed. As to the Churchyard, maintenance for that part of it for which the Parish Council has accepted responsibility (Sibford Ferris Parish Council takes care of the other) has been put in place for the next year and grateful thanks were extended to Mr Cedric Brown for his involvement. Turning to the Bishop Blaize, Mrs Eileen Haynes was invited to report on the current situation. She keeps in close contact with the Planning Department of Cherwell District Council to establish whether there have been any developments. Presently the building is unoccupied and the way forward is most uncertain but there is a determination amongst local residents that a change of use from licensed to residential should not take place. Mrs Haynes will keep the local community updated. At the Chairman's invitation, other matters were raised including the possibility of the installation of a postal box in High Meadow, the poor state of gullies, holes in some roads, the local bus service and damage to grass verges by parked vehicles. All these matters will be pursued by the Clerk.

Residents are asked to note, please, the following dates:-

Litterblitz Saturday, 5<sup>th</sup> April 2008 (meeting at the Village Hall at 10am)

Annual Parish Meeting Thursday, 8<sup>th</sup> May 2008 (in the hall of Sibford Gower Endowed Primary School starting at 7.30pm)

Next Parish Council Meeting Thursday, 27<sup>th</sup> March 2008 (in the staff room of Sibford Gower Endowed Primary School starting at 8pm)

## Village Hall News

Sunday Markets will again be held in the Hall on 9<sup>th</sup> March; 6<sup>th</sup> April; 4<sup>th</sup> May and 1<sup>st</sup> June, 1.30 to 4.00pm. 20p entry fee, £5 to hire a table to sell your own goods. On the 9<sup>th</sup> March a local resident has donated a number of items to be sold for Hall Funds and these include thirteen old blue and white Delph plates valued at between £40 – 60, other old dishes, vases, cigarette cards etc. Other goods include new household items, sweets, small presents, lovely handmade inexpensive greeting cards, other handmade items, homemade pies and cakes, second hand books etc. Refreshments.

### Village Hall Quiz - March 29th

The Village Hall will again host the popular quiz night. Teams (maximum of 6 people) from the Sibfords and Burdrop may be entered by calling 780025 or 780373, or by dropping a note in at the Rectory. Doors will open at 7 pm for a prompt 7.30 pm start. A ploughmans supper will be provided and the licensed bar will be open. Please enter your named team as soon as possible. Entry fee of £4 per head is payable on the night. Thanks to the Vicar and James Wimbush for acting as question masters.

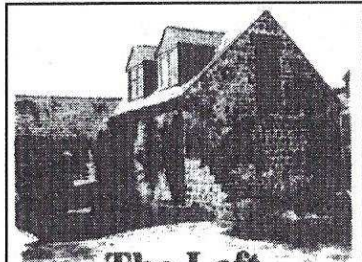
### Village Hall Fayre - June 21st

The Village Hall team is now planning the Annual Fayre which will be held on the afternoon of June 21st. If you have any great ideas or are willing to help plan or help on the day, please contact Ginny on 780373.

### C.A. Berger

painting & decorating  
interiors & exteriors  
residential & commercial

Mobile: 07875 212 315  
Office Tel: 01295 780 140



### The Loft at Forge House

Visit Britain 4 ♦

*Bed & Breakfast  
or Self Catering Apartment  
with double bedroom*

**Carole Ralph**

The Loft at Forge House  
Old Forge Yard, Swalcliffe,  
Oxon OX15 5EH

Tel & Fax: 01295 788677

Email: [stuart@forgeyard.freemove.co.uk](mailto:stuart@forgeyard.freemove.co.uk)  
[http://mysite.wanadoo-members.co.uk/the\\_loft](http://mysite.wanadoo-members.co.uk/the_loft)

# The Sibfords Society

We invite you to join us on a Winter's Walk with Robin and Ann to greet the new month of March with a walk from Stratford upon Avon. Please meet at the Village Hall on 1st March at 9.45am to share cars and strongly advise wearing waterproof footwear, as we will be walking over muddy footpaths. It will not be possible to have our usual soup refreshment at the end of the walk but as we are parking near to the town centre, it will be easy to find somewhere for a hot drink and a sandwich. As usual, there will be a collection for the Katharine House Hospice. The next meeting will be our Annual General Meeting on Thursday, 20 March, when we will have a short business session and then Mike Finch will talk about the history of Sibford School and show an early film of the School. We are always very pleased to welcome non-members to our meetings, so do come and join us.

## **Katharine House Hospice Jumble/Recycling Sale Saturday October 13th 2PM Sibford Village Hall.**

Adm 30p, usual stalls, raffle, teas, KHH Xmas cards.

Any donations of unwanted items can be left with or collected by Andrew/Bernie Jones 780343. Any offers of help on the day would be more than welcome. Thankyou for your support.

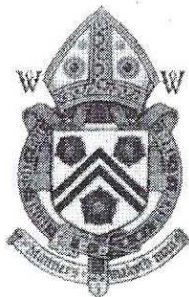
DAMIAN AND DEBBIE WELCOME YOU TO

## THE WYKHAM ARMS

Temple Mill Road, Sibford Gower, Nr. Banbury OX15 5RX

Tel: 01295 788808

Quiz Night  
on First Sunday of the Month  
'Hooky Night' Wednesday  
evening 6.00 - 7.30 pm  
(Beer, Lager, House Wine)  
Wi-Fi Hotspot Service  
Bar only Sunday Night, Closed  
All Day Monday



Fantastic Family Sunday  
Lunch  
(Booking advised)  
Freshly prepared  
local produce.  
Opening Times  
11.00 am - 3.00 pm  
6.00 pm - 11.30 pm

[www.wykhamarms.co.uk](http://www.wykhamarms.co.uk)

email; [info@wykhamarms.co.uk](mailto:info@wykhamarms.co.uk)

**Sibford Gower Parish Council**  
**LITTERBLITZ**  
**Saturday, 5<sup>th</sup> April 2008**

The Annual Litterblitz will take place on Saturday, 5<sup>th</sup> April 2008 and volunteers are sought to give an hour or so of their time to help with the work of clearing litter from where it may have gathered in Burdrop and Sibford Gower. We will meet at Sibford Village Hall at 10am when Robin Spicer will allocate the areas which require attention.

The Members of the Parish Council hope that the occasion will receive the usual enthusiastic support and look forward to seeing you on the 5<sup>th</sup> April.

**SIBFORD FERRIS LITTER BLITZ**

The Annual Litter Blitz in the Ferris will take place on

**Saturday, 5<sup>th</sup> April**

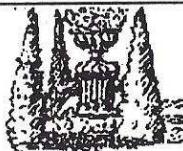
meeting at Lanes End at **10.00 am**

Martin Thomas has kindly agreed to do the organising on the day.

**Volunteers most welcome!**

Equipment will be provided. If you would like to take part, but cannot make the day or time, please contact Anita Spencer on 788557 to make alternative arrangements.

**Sheila Job LCH**  
**HOMŒOPATH**  
**EFT PRACTITIONER**  
For all health problems  
**01295 780468**



**BED & BREAKFAST**

Buttslade House Cottage (Sibford Gower)  
offers comfortable accommodation with  
en suite bathroom overlooking a tranquil  
English country garden.  
Contact Diana Thompson  
(01295) 788818  
or [janthompson50@hotmail.com](mailto:janthompson50@hotmail.com)  
[www.buttsladehouse.co.uk](http://www.buttsladehouse.co.uk)



## **SIBFORD GOWER VILLAGE POND**

### **Good sense guidelines when visiting the pond**

In response to concerns expressed that the changes in hand through the Pond Action Team to improve the biodiversity of the pond introduce new risks for the health and safety of those visiting and enjoying the pond, Sibford Gower Parish Council has carried out a risk assessment. This has identified the potential hazards and those groups of people who may be most at risk. These are mostly but not exclusively young children and the elderly. Following discussion at Parish Council meetings it has been agreed that the following guidelines should be published for the safe enjoyment of the village pond. The Parish Council will keep these guidelines under review and will welcome any further suggestions for maintaining a low risk environment for those visiting the pond. A copy of the Risk Assessment is held by the Parish Clerk.

Please follow these good sense guidelines when visiting the village pond:

Children should be supervised at all times

Beware of passing traffic and parked cars

Walk don't run! — surfaces may be slippery

Take care on uneven ground

Keep fresh cuts covered and wash hands after contact with the pond water

Don't put fingers in mouths after contact with the pond water

Don't go in the water-there is mud and silt on the bottom of the pond

Some of the insects that are attracted to a pond habitat can bite or sting so beware!

Note that should it be necessary, the water in the pond is shallow and can be easily waded.

It is recognised that parking problems exist in the village but where other spaces are available the Parish Council seeks residents' co-operation in trying to avoid parking alongside the pond.

Sibford Gower Parish Council January 2008

## **Sibford Methodist Chapel**

The Stewards would like to thank all those who supported our December Coffee Morning. It was lovely to see so many of you, who helped us to raise the grand sum of £430.90

This money goes towards Chapel maintenance and a donation is also sent to a chosen charity.

**SIBFORD GOWER PRIMARY SCHOOL**

**Acre Ditch, Sibford Gower, Banbury, OX15 5RW**

**ART EXHIBITION  
& CRAFT FAIR**

**Saturday 15 and Sunday 16 March**

**10.30 am - 4.30 pm**

**Free admission**

**Over 250 paintings by national and locally renowned artists**

**Excellent café refreshments available throughout the day**

**Official opening of the new school buildings (Sunday 12 noon)  
and balloon release**

**A selection of craft stalls and children's "see and do" displays**

**General enquiries (School Office) 01295 780270**

**Exclusive preview evening**

**Friday 14 March 7.30 to 9.30**

**Wine and nibbles included**

**Entrance £5**

**Admission by ticket only ~ available from 01295 780888**



**The Firs Garage**

**HOOK NORTON, Oxon., OX15 5DD**  
(1 mile north of village)



**Telephone: 01608 737349**

**Fax: 01608 730271**

**[www.firs-garage.com](http://www.firs-garage.com)**

**SALES OPEN Mon-Fri 8am-6pm, Sat 8am-5pm, Sun Closed**

**(For out of hours Sales, please telephone for an appointment)**

**SERVICE & PARTS Mon-Fri 8am-5.30pm, Sat 8am-12 noon**

**WE OFFER YOU**

- \* Sales (New & Used)
- \* 3 year unlimited mileage warranty (new)
- \* Optional 12 months warranty
- \* Part exchange welcome
- \* Off road demos

- \* Service & MOT (all makes)
- \* Parts \* Vinyl Graphics
- \* Body work & Insurance estimates
- \* Attendant service (fuel)
- \* Friendly service & lots more!

**We always have an extensive range of new and used vehicles, fully serviced with warranty. Come and have a look, a cup of coffee, and take a leisurely test drive.**

***We would like to thank the local community for their support, it is appreciated.  
Family business Established 1960***



Sibford Pre-school is a happy and welcoming environment providing care, play and education for all children aged 2½ to 5 years, building on their home experiences. We are located in a purpose built, bright and airy room in Sibford Village Hall. We also have a dedicated and enclosed outdoor play area and when the weather conditions are too bad, we can make full use of the Village Hall for indoor play!

*Our aims are to –*

- Meet the emotional and social needs of the children in our care, providing a secure and stable environment, treating each child as the individual that they are!*
- Help the children gain confidence and independence within their social, moral, spiritual and cultural development.*
- Cultivate a desire – within each child – to discover and learn, helping them to reach their full potential.*
- To prepare the children to go onto school as keen and confident learners as well as happy and considerate young people.*

The Pre-school runs every weekday morning – 9am to 12 noon, during term-time.

In addition we run a very popular lunch club every Monday, Thursday and Friday. This is a session where Children bring a packed lunch and enjoy a happy, sociable lunch time with friends (this facility is also open to Children who attend Sibford Primary School on a part-time basis).

**Do come and talk to us, or pick up an information pack:-**

**Tel: 01295 780998 or out of hours, please call Emma on 07887 558809.**

### **Sibford Pre-School Open Morning**

**Tuesday 4<sup>th</sup> March from 10am to 11.30am**

Sibford Playgroup provides a bright and stimulating environment for children aged between 2 and 5 years of age. Why not come along to our open morning and experience what we have to offer. Our trained staff will be happy to discuss your child's needs and any questions you may have regarding our facilities. We look forward to welcoming you and your children on Tuesday 4<sup>th</sup> March. If you require any further information, please contact Emma or Helen on 01295 780998 during playgroup hours (9am to 12 noon), or out of hours Emma on 07887 558809

### **Sibford Ferris Parish Council - Date of Next Meeting**

There will be an ordinary meeting of Sibford Ferris Parish Council on **Wednesday, 19th March at 7.45pm** in the Sports Hall Classroom at Sibford School. This will be the last ordinary meeting of the parish council financial year. Members of the public are given an opportunity to comment or ask questions at meetings. All welcome.

### **VACANCY ON SIBFORD FERRIS PARISH COUNCIL**

A vacancy has arisen on the Parish Council due to the resignation of Nicki Kitchen due to other commitments. The Parish Council will be required to co-opt a new member onto the Council and would be pleased to hear from anyone interested in taking on this role. If you would like to offer your services to the community in this way or would like to know more about the role, please do not hesitate to contact the Clerk on 788557.

#### **SUPPORT NEEDED**

Richard Thomas is running the London Marathon to raise funds for The Childrens Society and needs your support.

To sponsor Richard please ask Sue Bannister (at Carters Yard or email; [susan@priorymill.demon.co.uk](mailto:susan@priorymill.demon.co.uk)) for a sponsorship form.

All the details are on the form so please support Richards efforts!

## **Music in the Abbey: St John Passion** **6.30pm Friday 21 March**

Dorchester Abbey, Dorchester-on-Thames,

The Orchestra of St John's and OSJ Voices, under their conductor John Lubbock, return to Dorchester Abbey to perform Bach's powerful meditation on the story of the betrayal, arrest, trial and crucifixion of Jesus Christ. Performed without an interval, this performance in the beauty and grandeur of Dorchester Abbey promises to be a stunning, moving and inspiring occasion.

The work is being performed in English, in a translation by the Chorus Master of OSJ, Jeremy Jackman.

Ticket Prices: A £25; B £18 (£15); C £14 (£12)

**By Phone; Tickets Oxford** T: 01865 305305 9.30am-6.30pm Mon – Sat

**By Internet; [www.ticketsoxford.com](http://www.ticketsoxford.com)**

## New Car Share Scheme for Chiltern Railways

Chiltern Railways has recently launched a car-sharing scheme to reduce travel costs as well as congestion and pollution for its passengers. The scheme is accessed through Chiltern's new website and enables passengers to share lifts to any destination.

Passengers can access the scheme from home or work at [www.chilterncarshare.co.uk](http://www.chilterncarshare.co.uk) and register their journey details for free. The system will then tell them if anyone else is going in the same direction, leaving it up to them to make contact through a secure e-mail connection, and arrange to share both the journey and the costs of travel.

The software behind the system has been provided by the specialist car-sharing company, *liftshare*, which has established more than 900 car-sharing schemes for communities across the UK.

As well as reducing travel costs, the scheme has been designed to encourage more efficient use of the car, thereby reducing congestion and pollution in the local area.

Ray Cutler, aged 43, travels from Watford to Denham Station and will use Chiltern Carshare between Watford and Denham Station. Ray said: "Chiltern Carshare will cut the fuel cost on every shared journey, therefore making my vehicle more efficient."

Chrys Handy, aged 52, lives in Solihull. Chrys will use Chiltern Carshare to get to and from work. Chrys said: "I usually put approx £50 worth of fuel in my car every 10 days or so which is extended to 20 days if I am sharing – plus company on a 30 – 50 minute journey each way. My advice to a first time user is to go for it. With the current price of fuel, any savings must be worthwhile!"

For more information about the scheme, visit [www.chilterncarshare.co.uk](http://www.chilterncarshare.co.uk).



## SEARCH FOR BANBURY'S TOP YOUNG MUSICIAN REACHES CLIMAX

Young performers from across the district will be descending on Sibford School for the final of the Banbury Young Musician of the Year Award. Sibford is well represented with Emily Sloan competing in the Junior Singing Final; Miki Arai in the Senior Piano Final; and Rachel Greene, Cleo Jones, James Monaghan and Connie Foster-Hall who are hoping to take the edge over Shipston High School in the Open Class for Trios and Quartets.

The competition, which is organised by the Rotary Club of Banbury, takes place at **5.30pm on Saturday March 1** in the school's main hall and is open to the public so do go along and hear some excellent young musicians.

---

### Sibford Ferris Annual Parish Meeting

The **SIBFORD FERRIS ANNUAL PARISH MEETING** will be held on **Wednesday, 30th April 2008 at 7.45 pm** in the first-floor room of the Sports Hall, Sibford School.

This is not a parish council meeting but a village meeting. However, as is customary, the Parish Council Chairman and Responsible Financial Officer will give their reports for the year.

There will then be an opportunity for residents to air their views, raise and discuss any issues of concern or ask questions of the Parish Councillors.

One of the topics for discussion this year will be the possibility of creating a **Parish Plan**. A Parish Plan is a statement of how a community envisages it will develop in the future. The parish council normally initiates discussions about undertaking a Parish Plan, but it is something that is then researched and drawn up by other members of the community. Once a Parish Plan is in place, it becomes a reference point for any future decisions made at Parish level.

All residents are welcome to attend the meeting.



Women's  
Institute

## Sibford W.I. Meeting – Tuesday, 12<sup>th</sup> February 2008

President Glennis was delighted to welcome three new members, Charlotte Cox, Teresa Tovell and Margaret Thomlinson bringing this month's attendance up to twenty.

In Lynda's absence, Rosemary deputised as secretary. Tickets were on sale for the Group Coffee, Cake and Chat morning at Jubilee Hall, Bloxham on 3rd April. Following the Planning Meeting on the 29<sup>th</sup> January, Jane has finalised an exciting programme for the coming year. Our coach outing will be on Tuesday, 12<sup>th</sup> August. The destination is Coughton Court, an imposing Tudor house set in beautiful gardens near Alcester. The coach will leave the Village Hall at 10am and return by 6pm. We usually have some spare seats and if any villagers are interested in joining us, please ring Margaret Gardiner (780979). If she is unavailable please try Glennis Hardman (780391).

Oh, what lovely hats! Celia Crook of 'That Hat' brought lots of examples of the hats she makes. She told how she'd always loved hats since she was a little girl and after taking early retirement from teaching, she took courses in millinery and then set up her own business. She does special commissions for customers, having enquiries from as far away as America. She demonstrated how her hats were made and modelled some of her beautiful creations – hats and fascinators. She was thanked by Gaynor and then members were able to try the hats for themselves! Celia then judged the competition for a Posh Hat which was won by Margaret with Glennis second and Val third.

Kathleen (W) and Rosalind were not able to fulfil their tea duties so Margaret and Valerie kindly took over tea pouring and excellent home made cakes were provided by Kathleen, Valerie and Glennis.

We meet again on Tuesday, 11<sup>th</sup> March at 2pm in the Village Hall. Barbara Gray is coming to talk about Denman College. Six home baked Easter biscuits will be the competition. RVN

## "Bishop Blaize" - March update

The Noquets did not appeal against the planning decision of last June. This means that if they want to change the use of the building to a private dwelling, they will have to present a new application, which seems unlikely in the present circumstances. So it is still a pub, although it is empty at the moment, the landlords are seemingly living abroad. We did have a fleeting visit from Mrs. Noquet on Feb. 2nd, but no-one has been seen since.

So do not despair - all is not lost as long as we continue our stand. Legally there is not a lot we can do for the moment, but we are determined that this will not become a 'stalemate' situation, as is the case a Gt. Rollright. It is now one year since the "Bishop Blaize" closed on 9th March 2007, and we would very much like to see it back!

pp Bishop Blaize Support Group  
Eileen Haynes (780083)

# Oddjob

**CARPENTRY  
PLUMBING  
ELECTRICS  
HEATING INSTALLATION  
KITCHEN & BATHROOM FITTING  
BUILDING WORKS  
SECURITY**

**FOR A COMPREHENSIVE AND RELIABLE  
LOCAL SERVICE**

**HUGO SEELY 01295 780355**

**FREE NO-OBLIGATION ESTIMATES  
No job too large**

**Excellent local references available**

*Ann Woolgrove*

FABRICS, CURTAINS & SOFT FURNISHINGS

**Handsewn & interlined curtains &  
pelmetts our speciality**

Roman & Roller blinds

Customised design service and  
home consultancy

Every kind of fabric from many  
leading manufacturers

Decorative Poles, Tie backs & Trimmings

*New Sofas &  
Chairs -*

*Loose Covers and*

*Cushions -*

*Wallpapers -*

*Lampshade making -  
Custom made*

*Bedspreads &*

*Headboards -*

*Reupholstery Service -*

**Tel/Fax: 01295 788145**

**[www.annwoolgrove.com](http://www.annwoolgrove.com)**



## WELCOME TO SIBFORD

*If you are a new resident of Sibford and have not yet received a copy of the "Welcome to Sibford" booklet, please telephone Pauleen Inns on 780702 (Gower or Burdrop) or Ann Bishop on 788188 (Ferris), and a copy will be delivered to you. The information will help to make you feel at home - by acquainting you with the services, schools, clubs and societies that are currently active in the villages.*

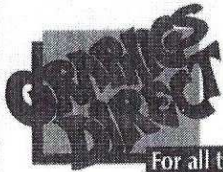


## Sibford Horticultural Society

Our indoor meetings re-start on March 12th at 8 pm in the Village Hall with Rob Cole talking on 'Building a Dream'.

## FOR SALE

VIDEO CAMERA NEARLY NEW CANON E 300 (POP-UP LIGHT) 8MM VIDEO. CARRYING CASE, SPARE BATTERY £75  
2 OAK CUPBOARDS £25 EACH  
MAHOGANY BOOKCASE 3 SHELVES £20  
SMALL ROUND CAFFEE TABLE £25  
LADIES AND GENTS BIKES NEEDS SOME ATTENTION BOTH FOR £60  
SONY SURROUND SOUND 5 SPEAKERS VGC £100  
NEST OF TABLES GLASS TOPS £30  
THORN VIDEO PLUS RECORDER £50  
IF INTERESTED PLEASE RING 01295 788246



The Firs, Hook Norton, Banbury, OX15 5DD  
Email: enquiries@graphics-direct.co.uk  
Phone: 01608 730555 Fax: 01608 730271

For all types of Vinyl Graphics & Signage.

Theresa Harper

DESIGNING PRODUCING & FITTING

## Bed & Breakfast

**AGDON FARM**

**Nr Brailes**

**Comfortable rooms  
in old stone farmhouse**

**Tel: Maggie Cripps  
01608 685226**

## Holy Trinity Church. Sibford

The Annual Parochial Church Meeting will take place at 10.30am on Sunday, 9<sup>th</sup> March 2008 (following the Church Service) and a cordial invitation to all is extended.

The purpose is:-

For the election of Parochial representatives of the laity as follows:-

To the Parochial Church Council - eight representatives.

To the Deanery Synod - one representative.

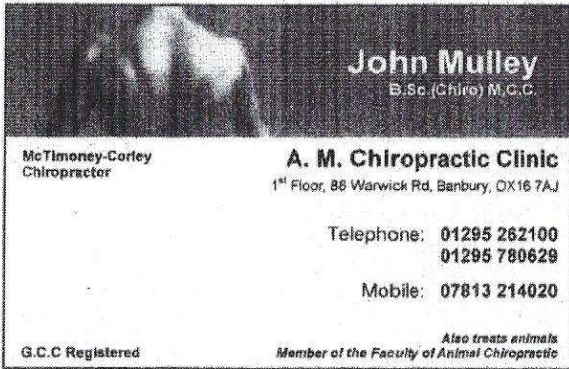
Two Church Wardens.

For the appointment of Sidespersons and the Independent Examiner or Auditor.

To hear Reports on Church related matters.

All persons whose names are entered upon the Church Electoral Roll are entitled to vote at the election of parochial representatives of the laity.

Should any regular churchgoer whose name is not already included on the Electoral Roll and would like it to be, application forms are available in the church or may be obtained from Peter Hardman (780391) to whom completed forms should be handed



**John Mulley**  
B.Sc. (Chiro) M.C.C.

**McTimoney-Corley**  
Chiropractor

**A. M. Chiropractic Clinic**  
1<sup>st</sup> Floor, 88 Warwick Rd, Banbury, OX16 7AJ

Telephone: **01295 262100**  
**01295 780629**

Mobile: **07813 214020**

Also treats animals  
Member of the Faculty of Animal Chiropractic

G.C.C Registered

**Oxon Computers**  
Qualified PC Engineer

Danny, Company Owner

PC repair, maintenance & configuration  
Tel: 01295 788766 Mobile: 07767 025752  
Fax: 01295 788766  
Email: [oxoncomputers@lowriser.co.uk](mailto:oxoncomputers@lowriser.co.uk)  
[www.oxoncomputers.co.uk](http://www.oxoncomputers.co.uk)

**QUALITY FISH DIRECT**  
FROM

Proprietor: T.P.Martin  
Tel: 07812 361853

**GRIMSBY MARKET**

Best fresh fish and shell fish to your area  
direct from Grimsby on the  
Lincolnshire coast

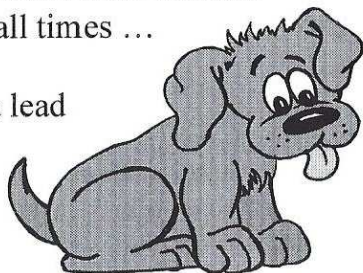
I'll be at Sibford Village Hall car park  
**EVERY MONDAY from**  
**approximately 4pm till 6pm**

## It's a dogs life!

Sibford School would like to make a polite appeal to all dogs to encourage their owners to act responsibly.

We all know how unpleasant dog mess is, and that it can cause infection, but unfortunately some owners are failing to pick up after their pets. Dogs are therefore encouraged to ensure their walkers remember to carry a plastic bag with them at all times ... and to use it!

Please also ensure your owners keep you on a lead when walking in the school grounds.



Many thanks

Serenity at Sibford Gower

Gautherns Barn

788463

Come and escape for some well deserved pampering!

Facials \* Pedicures

Massage \* Waxing

plus lots more relaxing treatments

Gift Vouchers can be bought over the phone

### Miss 'T' Catering.

Catering for events such as:  
Anniversaries, Weddings,  
Christenings, Birthday parties,  
Funerals

And private dinner parties.

~.~.~

Also available

Cutlery and Crockery Hire.

Contact Victoria Taylor on:

Mob: 07841 910037

Home: 01295 788924

**FRANCIS MORDAUNT** MCFHP MAFHP

*Member of the Open College of Foot Health Professionals*

*Member of the British Association of Foot Health Professionals*

**FOOT HEALTH PROFESSIONAL**

To enquire about a home visit please

telephone: 01295 730615

Professional Foot Care in Your Own Home

### Richard Wallington

Builder

Block Paver Drives a Speciality

Also Extensions, Patios

Fencing etc.

High Quality Work, Free Estimates

01295 780705 07743 932545

(Sibford Gower) (Mobile)

## HOLY TRINITY CHURCH NEWS

The Lent Austerity Lunches are being held in the six Benefice Parishes, that in Sibford being on Friday 14th March at 12.30 pm at Wyatts Close, Sibford Gower, the home of Gilian and David Soden. The Discussion Groups on Sundays at 3.30 pm (except for March 2nd when there will be none) led by Rev. John Tattersall at his home at Abingdon House, Park Lane, Swalcliffe, and weekly on Thursdays at 10.30 am at the home of Margaret and Neil Howarth at 32 Danvers Close, Broughton will be continuing. All living in the villages of the Benefice are invited to both of these series. Services of Eucharist take place each Friday at 7.30 am in Sibford Church up to Friday 14th March. In Holy Week from Monday 17th March to Saturday 22nd March there will be short services of Matins, again in Sibford Church at 7.30 am. Other Easter services will be as listed separately in these pages.

The Parish Annual Meeting will be held after the morning service in church on Sunday 9th March and all in the villages are invited to attend. This will include an election for the two churchwardens and for the 8 members of the Parochial Church Council. Nominations should be handed to Peter Hardman, PCC Secretary and should contain the signed consents for nomination.



**FARMHOUSE**  
**BED AND BREAKFAST**  
**GRANGE FARM, SWALCLIFFE**  
*Enjoy warm hospitality & peaceful  
surroundings in our comfortable  
18th C Farmhouse*  
**CONTACT BARBARA TAYLOR**  
TEL.01295 780206 or 0771 2895728  
[WWW.swalcliffegrange.com](http://WWW.swalcliffegrange.com)



Contributions for the  
April  
Sibford Scene  
to the Shop or Editor by  
March 18th

**REIKI**  
**HEALING FOR HUMANS  
AND ANIMALS**

**LYN SIMMS**  
MASTER PRACTITIONER

**01295 780 655**

### **CASHMORE ANTIQUES**

*Period Timber Restorer*

**Beams, doors, floors, furniture repaired and  
re-coloured by hand with NO MESS**

**also**

**brick and stone walls constructed or repaired,  
paving, terracing, steps, patios, ponds built**

01295 788101 or 07733428220

Restorer for 25 yrs – portfolio available

The Family Service held on Sunday 10th February, being the last Sunday before St Valentine's Day was on the theme of Love. A very large congregation came forward for red hearts to be drawn on the backs of their hands by two artistic young ladies and there were the usual readings, mostly by young people and much singing with arm waving descriptions. The next Family Service will be at 10.00 am on Sunday 2nd March which is Mothering Sunday.

A coffee morning was held on Saturday 23rd February at the home of Glyn & Jane Evans. Unfortunately the hosts couldn't be present as the National Health Service decided to call Jane in for a hip operation that morning so Erica Wimbush and her team took over. We are glad to say that both the operation and the coffee morning were very successful, the latter contributing £130 to Church funds. We wish Jane a very speedy recovery and return to normal.

We are also delighted that our Rector's eye operation seems to have been very successful and that his sight is gradually improving. We wish him a complete recovery very soon.

**TREES**

**WE'RE THERE FOR TREE CARE**

All aspects of tree care undertaken  
 Specialising in reduction/removal of trees in confined spaces  
 Supplier of logs & chippings  
 Over 20 years experience  
 Fully Insured

For a free quote and a chat please contact:  
**Arthur White (The Tree Chap) 01295 788549**

**Micks Sticks**  
 Fire Lighting Wood For Sale  
 £2.50 per big bag  
 Call in anytime and ask for Mick Canning, at The Old Malt House, Sibford Ferris  
 Tel; 01295 780321

*Sarah Walker*  
*Vivienne Nott*

*fresh flowers, fresh ideas*  
*Gorgeous bouquets & arrangements*  
*Wedding bouquets, churches, marquees and receptions*  
*Flowers for supper parties, house parties and celebrations*  
*Funerals and memorials*

Contact :  
 Sarah : 01295 788595 Viv: 01608 652819

**BUILDING PLANS**  
**BUILDING REGS. SUBMISSIONS**

Extensions \* Loft conversions  
 Listed Buildings work \* New build

D.R. BOVILL, B.A.  
 DESIGN AND PLANNING CONSULTANT

Private and Trade enquiries welcome  
 01295 788922 davidbovill@btinternet.com

## Church Services

Society of Friends Sunday at 10.30 am  
Methodist Sunday at 11.00 am  
Roman Catholic Mass Wroxton Sunday at 9.00 am  
Brailes Sunday at 11.30 am  
Baptist Hook Norton Sunday at 10.30 am  
Church of England, Holy Trinity, Sibford Gower.  
March  
Sun 2nd Mothering Sunday. 8am Holy Communion  
& Family Service 10am  
Sun 9th 9.30 am Holy Communion  
Sun 16th Palm Sunday Service at Epwell 10.15am  
Mon 17th to Sat 22nd Holy Week Matins at 7.30am Daily  
Thu 22nd Maundy Thursday Service at Swalcliffe 8.00pm  
Fri 21st 9.30 - 12.00 Good Friday Childrens Workshop at the Primary School  
1.30pm Devotional Service at Epwell  
6.30pm Words and Music for Good Friday at Broughton  
Sun 23rd 10.00am Easter Sunday Holy Communion  
Sun 30th 10.30am Benefice Service at Shutford  
April  
Sun 6th 10.30am Benefice Service at Swalcliffe



### RED HORSE VALE LTD

All Types of Fuel, Coal, Smokeless, Gas,  
Logs, Kindling, Barbecue Needs  
Central Heating Oil, Oil Tanks & Coal Bunkers  
Landscape & Building Materials, Garden Centre  
& Garden Supplies. Farm & Country Sundries  
Equestrian Products, Horse & Pet Feeds  
Open: Monday - Saturday 8am - 5pm  
Windmill Farm, Banbury Road (A422),  
Oxhill, Warwickshire CV35 ORP  
Tel: 01926642832  
Fax: 01926 642 853

## *Reflexology Remedial Massage*

**Elizabeth Webber**

MAR.LCSP (Phys)

15 years experience

**Godswell Natural Therapy Centre  
Bloxham, Banbury**

**Tel: 01295 - 788101**

# Sibford Bus Services

## Free Bus Service

Chipping Norton Wednesday 5th & 19th. March

Departs 10 am and Returns 12 noon

Pick up points are; The Colony, High Meadow, Cross Roads, Village Hall,  
Lanes End Corner & Cotswold Close (Ferris)

## Cherwell Rural Dial-A-Ride Scheme

A mini bus with tail-lift to take **elderly or disabled people** and escort to Banbury (max fare £1.60) Door-to-Door service. Book at least one day in advance. Operates on Wednesdays & Thursdays. Phone 263777 for details.

BCTA also takes bookings for groups of 8 or more on a weekly/monthly basis (Wednesdays & Thursdays) to and from Banbury. Tel; 263777

## BUS 480 - Times from 5th June 2005 - Mondays to Saturdays

### *From Banbury towards Shipston*

Banbury Bus Station dep.	09.00	11.00	12.30	13.30	15.30	17.10	18.10
SIBFORD GOWER School	09.25	11.25	12.55	13.55	15.55	17.35	18.35
Shipston, Tilemans Lane	09.47	11.47	13.17	14.17	16.17	17.57	18.57

### *From Shipston towards Banbury*

	NS		S		NS			
Shipston, Tilemans Lane	06.50	07.45	08.50	.....	09.50	11.50	13.20	17.10
SIBFORD GOWER School	07.12	08.07	09.12	09.12	10.12	12.12	13.42	17.32
Banbury Bus Station	07.37	08.35	09.37	09.37	10.37	12.37	14.07	17.57

Buses serve Sibford Ferris two minutes before the times shown at Sibford Gower towards Shipston and two minutes after the time shown at Sibford Gower towards Banbury.

Notes: S = Saturdays only, NS = Not Saturdays.

Most journeys, where possible, will operate low floor wheelchair accessible vehicles.

*Sorry, No services on Sundays or Public Holidays*

**For complete times at all of the intermediate places that are served by 480 please see new timetables available from bus drivers and in the Village Shop.**

**The Fare structure has changed: Adult Fare £2.00 each way**

**Child (5-16yrs) £1.00**

**Family ticket (2 Adults + up to 3 children) £8.40 return**

# Calendar of Events

## March

- Sat 1st Sibfords Society Walk. 9.45am at the Village Hall. p7  
Sat 1st Young Musicians at Sibford School 5.30pm p14  
Tue 4th Preschool Open Morning. p11  
Tue 4th Friendship Club. Polymer Clay work. p4  
Wed 5th Mobile Library in the Sibfords (2.40 - 4.10pm)  
Sun 9th Annual Parochial Church Meeting 10.30 am p18  
Sun 9th Village Hall Market p7  
Tue 11th W.I. Talk on Denman Collage p15  
Wed 12th Horticultural Society Talk - Building a Dream p17  
Fri 14th Austerity Lunch at Wyatts Close, Sibford Gower 12.30pm p20  
Fri 14th Ticket Only Art Exhibition preview. p10  
Sat 15 & Sun 16 Annual Art Exhibition at the Primary School 10.30-4.30 p10  
Tue 18th Friendship Club. Warwick Museum p4  
Tue 18th Deadline for contributions to the April Sibford Scene p20  
Wed 19th Mobile Library in the Sibfords (2.40 - 4.10pm)  
Wed 19th Sibford Ferris Parish Council Meeting. P12  
Thu 20th Sibfords Society Annual General Meeting p7  
Fri 21st Music in the Abbey p12  
Thu 27th Sibford Gower Parish Council meeting p5  
Sat 29th Village Hall Quiz Night 7pm. P6

## April (part)

- Tue 1st Friendship Club Easter Tea. P4  
Sat 5th Sibford Gower and Sibford Ferris Litterblitz p8  
Sun 6th Village Hall Market p7  
Wed 30th Sibford Ferris Annual Parish Meeting p14

Cover Picture; Post Office and delivery van in Sibford Gower.

## Sibford Scene

Editor; Adrian Lamb. Grounds Farm, Sibford Ferris. 780380

e-mail [adrian.lamb@care4free.net](mailto:adrian.lamb@care4free.net)

Treasurer; Timothy Wimbush, The Rectory, Acre Ditch, S.Gower  
780555

Advertising; Ivor Hopkyns, Elmridge Farmhouse, Sibford Gower,  
Banbury, Oxon. OX15 5RT. Tel 788367