

# Sibford Scene

June 2007

No. 294

Artweeks Exhibitions until 3rd June

---

Open Garden at the Katharine House Hospice

At the Katharine House Hospice, Adderbury, 2 - 5 pm

---

Methodist Chapel Anniversary Service

Tuesday 5th June 7.30 pm

---

Sibford Gower Open Gardens

Sunday 17th June 2 - 6 pm

---

Club Day re-enactment and Village Fayre

Saturday 23rd June. Parade at 12 noon, Fayre at 1.00 pm

---

1st The Sibfords Scout Group

Sale & Teas

Saturday 30th June in the Village Hall 2 - 4 pm

& Treasure Hunt

Sunday 1st July 3 pm from the Village Hall



## Nature Notes

Apr. 26th. Walking in Swalcliffe Common we were pleased to find that less of the early purple orchids had been nibbled by deer this year and in places they were making quite a show. The area below the old quarry that was cleared and sown with wild flowers some years ago, has a good show of cowslips which grew rather large for the first few years, when the soil was rich, but now have blooms of a more natural size. There is also the promise of a good show of other flowers to come later in the summer. Had we visited the common at the end of April fifty years ago we would have heard nightingales but sadly not now. Their decline is probably due to the widening of the Sahara Desert which they cross, or fail to cross, on migration.

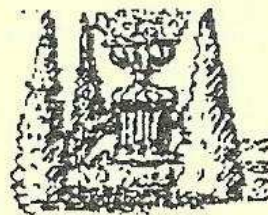
Apr. 28th. Walked over Brailes Hill from the Shipston Road. There was a nice patch of primroses in the woodland and a plantation of young oaks on this side of the hill that looked as though it had grown from acorns which were drilled in rows. After seeing so many oak apples last year they are few and far between this year. I read that the gaul wasp that causes them to grow has a two year life cycle so it seems likely that we shall see more again next year.

May. 2nd. Another red kite was seen over Sibford Ferris recently. Hopfully these masters of the air will soon follow the buzzards example and start nesting in our area.

May. 4th. Great spotted woodpeckers often seem to stop for a nap while clinging to our peanut feeder. Today a female was motionless for perhaps ten minutes after feeding.

May. 5th. It was nice to find sizable patches of pink purslane flowering in Beggars Lane. I had previously only seen it in Epwell Woods but it had obviously been seeding itself here for many years. Walking back on the footpath from Beggars Lane to the site of Bilberry Hall we found that in the recently drilled grass, there were lots of heartsease, or field pansies, a few of them very fine specimens with purple upper petals.

May. 14th. Having had 5 weeks during which only 0.13 inches (3mm) of rain fell we have now had 2.77 inches (71mm) in the last eight days. A case of the weather paying its debts.



### **BED & BREAKFAST**

**Buttslade House Cottage (Sibford Gower)**  
offers comfortable accommodation with  
en suite bathroom overlooking a tranquil  
English country garden.

Contact Diana Thompson

(01295) 788818

or [janthompson50@hotmail.com](mailto:janthompson50@hotmail.com)

[www.buttsladehouse.co.uk](http://www.buttsladehouse.co.uk)



## A German Soldiers Story

About ten years ago Jean and I went on a coach holiday with a Moreton-in-Marsh Senior Citizens club to the Austrian Tyrol and the holiday included a boat trip on Lake Aachensee. Also on the boat was a similar party of Germans and we sat facing a German couple of about our age with whom we exchanged greetings. Later we started to chat as best we could in what we knew of each others languages.

The man asked me whether I had served in the war and I told him I had served in Normandy and Western Europe. At this point I noticed that his wife became rather apprehensive as though she thought that the pair of us, in our middle seventies, might want to restart the war.

He told me that he was Polish by birth, having been born in Gdansk which had formerly been the German port of Danzig in East Prussia. When Hitlers forces invaded Poland on September 1st 1939 and occupied the western part of Poland they were soon followed by a prearranged invasion by Russia who took the eastern side of Poland. The Germans announced that East Prussia would again be part of Germany and that those who served in the German army would have German citizenship after the war. He decided, rightly or wrongly, that with his country occupied this would be his best course of action.

He served in the German Afrika Corps in the Western Desert until they were eventually pushed out of Africa and then took part in the rearguard action up the full length of Italy. When the ceasefire came he was in Southern Germany, in the part occupied by the Russian Army. Instead of being disarmed and released he was shipped off to Russia for five years of slave labour, so as he ruefully said, the war had cost him ten years of his life. He was now living with his German wife in West Germany.

After the boat trip we shook hands and said goodbye and went our separate ways. When the time came to leave, we went back to the coach park and a German coach was parked next to ours and as I was waiting to get on, the German couple suddenly appeared from the other coach to shake hands and wish us well once again.

I think our little chat had meant as much to him as it had to myself. I am glad it happened.

Bob Lamb.

---

Thank you to all who supported the coffee morning in aid of Break-through Breast Cancer held at Holmby House. We raised £142.51



*- Ann Woolgrove -  
Fabrics, Curtains &  
Soft Furnishings*

*I am having a sale of curtain,  
blind & upholstery weight fabrics  
on*

*Monday 11<sup>th</sup> – Thursday 14<sup>th</sup> June  
8.45am till 4 pm (till 8pm on  
Wednesday) at*

*5 Acre Ditch Sibford Gower  
(1/2 way between Church &  
Primary School)*

*Show lengths, roll ends, useful  
remnants & some display curtains.*

*10% of proceeds to Primary  
School funds.*

*Call 788145 for more details*

Rhubarb Rhubarb Rhubarb  
Here is a really good recipe  
which I make as soon as the  
new rhubarb appears.

6oz self raising wholemeal  
flour

3oz margarine

4oz brown sugar

4oz chopped dates

8oz rhubarb (cut into half inch  
chunks)

1 egg & 4 tablespoons milk

Rub the fat into the flour then  
chuck everything else in.

Bake for 40 mins at 180°C.

I use a square tin.

Jane Holliday

*Sibford Stores & Post Office  
Sibford Ferris  
OX15 5RG*

*Tel: 01295 788317 / 788348*

*Your Local Convenience Store*

Your local newsagent, we deliver newspapers and magazines 7 days a week to  
all the surrounding area, always a wide selection of newspapers and magazines  
available in the shop. Place your regular order today

Bread, cakes and savouries baked on the premises throughout the day.

We are your local National Lottery Agent

Photocopying, fax and mailing service available on the premises.

Agents for Dry Cleaning and Laundry.

Chilled & frozen foods, groceries, cigarettes, beers, wines and spirits, fresh  
fruit & vegetables, pet foods, medical and toiletries and lots, lots more.....

Telephone your grocery order for free local delivery 7 days a week.

**OPENING HOURS**

Monday to Saturday 5.30am to 6.00pm

Sunday 5.30am to 1.00pm





This term at Playgroup the children have been singing their favourite songs and learning new action rhymes. They have also been working hard making their cards and gifts for Fathers Day on June 17th. In the next few weeks the topics covered will be shopping, money and making money boxes, followed by a week of learning to eat and keep healthy. If you know of any 2 1/2 to 5 year olds, who would like to meet other children of their own age and join in our fun, then enrol them into Playgroup. We also run a successful lunch club from 12 noon to 12.45pm on Monday, Thursday and Friday. Please contact Emma or Nikki 01295 780998 during playgroup hours.

### Treasure Hunt

To raise funds for the 1st The Sibfords Beaver / Cub / Scout Group a treasure hunt will take place on Sunday 1st July at 3.00pm at the Village Hall. It will take about 1- 1 1/2 hours and will lead you round the village / villages. £1 per person entry fee. This will be a great way to walk off your Sunday lunch and then you can finish off the afternoon by purchasing tea and cakes back at the Village Hall.

All very welcome to take part.




**Ann Woolgrove**  
FABRICS, CURTAINS & SOFT FURNISHINGS

**Handsewn & interlined curtains & pelmets our speciality**  
Roman & Roller blinds  
Customised design service and home consultancy  
Every kind of fabric from many leading manufacturers  
Decorative Poles, Tie backs & Trimmings

<i>New Sofas &amp; Chairs -</i>	<i>Lampshade making -</i>
<i>Loose Covers and Cushions -</i>	<i>Custom made Bedspreads &amp; Headboards -</i>
<i>Wallpapers -</i>	<i>Reupholstery Service -</i>

**Tel/Fax: 01295 788145**  
**www.annwoolgrove.com**



**FOLLY FARM  
BACK PAIN CLINIC**

*Gentle but effective treatment*

## Aches & Pains?

### I can help you!

Just visit the local clinic between  
**Sibford & Swalcliffe**

**Contact: John McArthur**  
B.Sc. & Dip (Chiropractic)  
McTimoney-Corley Practitioner  
(M.A.M.C.S.T.)

**Tel: 0845 862 4 862** (local rate)  
**Mob: 07740 404 678**





Although we are surrounded by many fields still retaining their old ridge and furrow system clearly showing, we really know very little about them. However, at the last meeting of the Society, Deborah Hayter explained how they began to be used, as far back as the 9C but by the 14C, being the accepted use of land management. The ridges always went downhill, to facilitate drainage and on heavy clay soils the ridges were always deeper than on lighter soils. A three field system was used for crop rotation; one for harvest crops; one for peas and beans and the other fallow, where cattle and sheep could graze. In the early days, villagers would own an equal number of strips in these three fields but by the 17C these were not evenly distributed. We shall now look at our ancient heritage with a little more understanding in the future.

On 2 June, a walk of about 4 miles has been arranged by Holly and Peter McGee around their farm near Enstone. For those wishing to come, we shall meet at the Village Hall at 9.50am to car-share and then travel there together to start the walk at 10.30am. There will be light refreshments at the end of the walk and a collection towards the funds of the Society. This walk is open to everyone, so do please join us.

The annual outside visit of the Society this year will be to the villages made famous by Flora Thompson in the trilogy, 'Larkrise to Candleford'. Those who have agreed to come on the trip should meet at 10.00am, again at the Village Hall to car-share and we will proceed to Juniper Hill, near Bicester for a starting time of 11.00am. The cost will be £6 each. We shall break for lunch, either at the Butchers Arms at Fringford, or if preferred, you can eat a picnic on the village green. Please get in touch with Jenny Barratt on 01386 438238 if you have any queries.

## Wanted

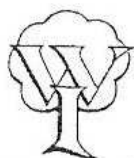
### House to Rent in Sibford (or nearby)

Local family seeking unfurnished house for minimum 12 months from September onwards.

References Available.

Please call 01295 780701. Mobile 07976 379244 or  
email; [si.edwards@btinternet.com](mailto:si.edwards@btinternet.com)





Women's  
Institute

### Sibford W.I. Meeting – Tuesday, 8th May 2007

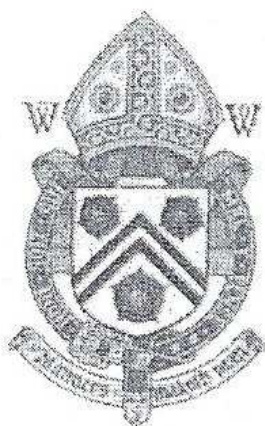
After welcoming everyone to the Meeting, the President reported that the new committee had met and that jobs and responsibilities had been allocated. She then read out a letter from Caroline and it was pleasing to hear that she had settled well into her exotic life in Hong Kong. She has joined the American Women's Association which she says fills the W.I. gap. Six members attended the Group Meeting at Hook Norton Baptist Church on 26<sup>th</sup> April and Lynda said that this had been a most enjoyable afternoon watching Tom Williams from Central Stores creating stunning modern flower arrangements. This was followed by a cream tea attractively set out in the adjacent church hall. Glennis won the cup for Sibford with her miniature flower arrangement. Jane gave a colourful account of the Speakers Selection Meeting on 2<sup>nd</sup> May when eight speakers gave twenty minute samples of their subjects. This in an excellent way of finding suitable speakers for our own future meetings. Lynda explained the National Resolution which urges HM Government to stop the closure of Community Hospitals which provide essential services to local people. This was carried unanimously and our group delegate will vote in favour of this worthwhile resolution at the NFWI AGM at the Albert Hall on 6<sup>th</sup> June. Whilst teas were being served by Gaynor and Kathleen (R), a written quiz was available to those who wished to take part. The competition for "Best Garden Bloom" was won by Gwen with Barbara and Valerie taking joint second. Our next meeting is on Tuesday, 12<sup>th</sup> June when Mrs Mervi Moyaert will talk on The History of Chocolate. A plate of chocolate goodies will be the competition. Visitors are always welcome.

GH

## DAMIAN AND DEBBIE WELCOME YOU TO THE WYKHAM ARMS

Temple Mill Road, Sibford Gower, Mr. Banbury OX15 5RX  
Tel: 01295 788808

Quiz Night  
on First Sunday of the Month  
'Hooky Night' Wednesday  
evening 6.00 - 7.30 pm  
(Beer, Lager, House Wine)  
Wi-Fi Hotspot Service  
Bar only Sunday Night, Closed  
All Day Monday



Fantastic Family Sunday  
Lunch  
(Booking advised)  
Freshly prepared  
local produce.  
Opening Times  
11.00 am - 3.00 pm  
6.00 pm - 11.30 pm

[www.wykhamsarms.co.uk](http://www.wykhamsarms.co.uk)

email; [info@wykhamsarms.co.uk](mailto:info@wykhamsarms.co.uk)



## The Sibford Ferris Annual Parish Meeting, held on 25 April.

The meeting was attended by the Parish Council Chairman, Chris Franklin, Vice-Chairman, John Simms and the three other Councillors – Maureen Hicks, Nicki Kitchen and Adrian Lamb, the Clerk, Cllr George Reynolds and, for the first item on the agenda, eighteen members of the public. This was the second planning application for change of use of the Bishop Blaize to a private dwelling. During discussions, it was generally agreed that the basis for the application was not sound: the saleability of the pub was proven by known purchase offers from individuals and also from a brewery, and its viability was currently of the same order as over the last twenty years, during which time the pub was run profitably and sold on at a profit. It was agreed that the loss of business cited by the owner as a reason for the application for change of use was self-made and that the pub would thrive under different ownership. The Parish Council confirmed that a strong objection to the application would be sent to the Planning Department on the grounds of loss of amenity. All attending were urged to write to the District Council with their clear, concise objections. Cllr Layer, attending from Sibford Gower Parish Council, took the opportunity to thank Eileen Haynes on behalf of all those present for her excellent work in co-ordinating the campaign against closure of the pub.

For the remainder of the agenda, three members of the public were present. Following the approval and signing of the minutes of last year's meeting, the Chairman, Chris Franklin, gave his report for the year. This was an election year and the Chairman thanked the Councillors, outgoing and incoming, and Clerk for their contributions during the year. He reported on some positive items from which the village is benefiting, including the surface water drainage improvements, the forthcoming refurbishment of the Cotswold Close play area, the resurfacing work to Main Street and the purchase of the burial ground extension. The Chairman thanked the gentlemen who kindly mowed the churchyard during the year, including Mike Clarke and Mick Clarke from the Ferris. He also thanked Mike Spring for the carved sign for the new notice board and Adrian Lamb for making and installing the devices now securing the gap in the wall on New Road. He noted that the new drainage scheme by Ferris Hill Farm has removed the serious flooding problem experienced there recently and that there have been no further sewage floods from the manhole in Woodway Road. Items with less satisfactory outcomes included the junction alignment at Lanes End,

where the resurfacing contractors were not asked to put in the new safety hatching on the corner, designed to protect pedestrians. He also reported with regret that the project to provide recreation facilities for older children in the village has made little progress, insurance cover being the main stumbling block. However, efforts are still being made to resolve these issues and move the project forward. The two small-leaved limes promised as replacements for the diseased horse-chestnuts along the Hook Norton road have yet to be planted. The County Council are also refusing to consider kerbing the verge on Main Street by the Small House garden where serious erosion is taking place. There was no progress on affordable housing for the communities. The proposal of

### THE VILLAGE SHOP HOOK NORTON

**\*NATIONAL LOTTERY\***

Grocery - Greengrocery - Bakery  
Wines - Spirits - Confectionary  
Newspapers - Magazines - Cards  
Video Rental - Bottled Gas

Open Monday to Friday

7 am to 8 pm

Saturday 8 am to 8 pm

Sunday 8 am to 6 pm

Telephone: 01608 737245



an annual joint meeting of the Wheathills Committee raised at the last APM, was put to the Town Estates Charity and Sibford Gower Parish Council but was voted against. Instead, a written annual report will be submitted by the Charity and the Secretary will attend the Ferris APM as well as the Gower. The Chairman then reported on a planning issue affecting the village, which was an application from Ferris Hill Farm to extend and relocate its waste transfer building. No decision has been received, but in their submission the Parish Council requested additional tree screening for the new building and commented on the need for environmental controls and the enforcement of the routing agreement to keep through traffic out of the village. The Chairman ended his report with a thank-you to Arnold Lamb for once again organising the annual litter blitz and for all those who turned out on 30 March and worked hard to clean up the village highways and byways. If anyone would be interested in taking over this task, Arnold would be pleased to hand over his stock of gloves and sacks (contact the Clerk 788557)!

The Clerk/Responsible Financial Officer then gave the Financial Report to 31 March 2007, advising that there had been receipts totalling £5021.17 and payments of £4112, including the Ferris contribution towards purchase of the burial ground extension (£1615). The Clerk thanked David Bennett for once again agreeing to continue in the role of Internal Auditor.

The meeting was then opened to public debate. Those present were asked if they supported the annual public donations made out of the precept to local good causes, totalling £520. No strong opinions were expressed and it was agreed Councillors would consider the matter again at the next parish council meeting. The request for thoughts on fund-raising for a future refurbishment of the Cotswold Close play area again did not raise a conclusive response, although it was agreed the village was fortunate to have benefited from the Section 106 monies and should recognise there would not be such funds available on another occasion. The matter would be put on the next council meeting agenda, together with the next item discussed - again inconclusively - which was whether there was a benefit in installing dog bins in the village.

Cllr Reynolds then made comments on two items of interest to the parish. Firstly, he advised that the flashing speed sign scheme offered by the District Council was being hampered by County Council restrictions on where they could be sited. Secondly, he reported that in the definitive Minerals Site Proposals and Policy Document due for publication in the summer, there was likely to be a recommendation to expand waste recycling facilities. With thanks to Cllr Reynolds for attending so many meetings during the year despite his busy schedule, and to all those present, there being no further business, the Chairman declared the meeting closed at 9.40 pm. The next parish council meeting will be on Wednesday, 11<sup>th</sup> July at 7.45 pm in the Sports Hall classroom, Sibford School. All welcome.

### **GODSWELL NATURAL THERAPY CENTRE**

*Godswell Lodge, Church Street, Bloxham  
Banbury, Oxon OX15 4ES*

\*\*\*\*\*

**Acupuncture, Alexander Technique,  
Aromatherapy, Art Therapy,  
Chiropractic, Chiropody,  
Counselling & Psychotherapy,  
Cranio-sacral therapy, Homoeopathy,  
NLP, Nutrition, Physiotherapy,  
Reflexology, Remedial Massage,  
Reiki, Spiritual Healing,  
Shiatsu, Yoga.**

\*\*\*\*\*

**Fully qualified professional therapists  
For information Ring 01295 720347**



## NEIGHBOURHOOD WATCH

The warmer weather is a time to take care. Please do not make it easy for the opportunist visitor, a person who can cause you so much distress.

Make sure you close windows and doors if they are out of your sight and lock garden sheds. Ask officials for identification before you allow them to enter your property, if you are not expecting them close the door and check

their identity with the authority concerned.

When neighbours are away keep an eye on their property, check that post or papers are not left sticking out of the letterbox and parcels are not left on the doorstep.

If you are bothered about strangers or unusual activities then contact the police, if they are not told they cannot investigate the situation.

Watch Office phone 01295 754611 Control Room phone 08458 505505

Bogus Royal Mail delivery cards suggesting "unable to deliver please ring (a premium rate) telephone number". If such a card is received, phone Royal Mail on 0207 239 6655.



**BUILDING PLANS**  
**BUILDING REGS. SUBMISSIONS**  
NEW BUILD EXTENSIONS ALTERATIONS

D.R. BOVILL, B.A.  
PLANNING & DESIGN CONSULTANT

PRIVATE AND TRADE ENQUIRIES - PLEASE CALL  
**01295 780609 OR 07890 591763**



# The Firs Garage

HOOK NORTON, Oxon., OX15 5DD  
(1 mile north of village)



Telephone: **01608 737349**  
Fax: **01608 730271**  
**www.firs-garage.com**

SALES OPEN Mon-Fri 8am-6pm, Sat 8am-5pm, Sun Closed  
(For out of hours Sales, please telephone for an appointment)  
SERVICE & PARTS Mon-Fri 8am-5.30pm, Sat 8am-12 noon

### WE OFFER YOU

- \* Sales (New & Used)
- \* 3 year unlimited mileage warranty (new)
- \* Optional 12 months warranty
- \* Part exchange welcome
- \* Off road demos
- \* Service & MOT (all makes)
- \* Parts \* Vinyl Graphics
- \* Body work & Insurance estimates
- \* Attendant service (fuel)
- \* Friendly service & lots more!

We always have an extensive range of new and used vehicles, fully serviced with warranty. Come and have a look, a cup of coffee, and take a leisurely test drive.

*We would like to thank the local community for their support, it is appreciated.  
Family business Established 1960*



## WELCOME TO SIBFORD

*If you are a new resident of Sibford and have not yet received a copy of the "Welcome to Sibford" booklet, please telephone Pauleen Inns on 780702 (Gower or Burdrop) or Ann Bishop on 788188 (Ferris), and a copy will be delivered to you. The information will help to make you feel at home - by acquainting you with the services, schools, clubs and societies that are currently active in the villages.*

This month we welcome to Sibford Gower, Adrian & Philippa Watts who have moved into Oaklands, Acre Ditch, from Hook Norton. They have two children Megan aged six who attends the local school and Harry aged four and enjoys time at the Ark Epwell. Adrian is a Technical Director. Their hobbies include horse riding and running.

Next we welcome Simon and Victoria Watts who have moved into the cottage at the Meeting House, Colony Road. They have one daughter Madelein aged two. Simon was educated at the local school and Friend School so knows the area well and is looking to put their roots down in this area permanently. He now works for Social Services. Victoria works for a Medical company. Their hobbies include music, cars, keep fit, and cycling.

This month we welcome to Sibford Ferris, Nicola and David Tarring who have moved into an apartment in the Manor, no.3 Sibford Grange. They have recently arrived from New Zealand. Nicola is British and has spent the last 17 years in New Zealand, but she and David have moved back due to family commitments. Nicola is an experienced equestrian and would like to get in touch with anyone who would like their horse exercised, as she is missing riding. Similarly, David would like anyone who enjoys tennis to get in touch, as he is keen to get a few games in as soon as possible. If you can help these two feel welcome by helping out with either, can you call them on 788518.

**TREES**  
**WE'RE THERE FOR TREE CARE**  
All aspects of tree care undertaken  
Specialising in reduction/removal of trees in confined spaces  
Supplier of logs & chippings  
Over 20 years experience  
Fully Insured  
For a free quote and a chat please contact:  
Arthur White (The Tree Chap) 01295 788549

1422716

**Sheila Job LCH**  
**HOMŒOPATH**  
**EFT PRACTITIONER**  
For all health problems  
**01295 780468**



**Report of the Sibford Gower Annual Parish Meeting held in Sibford Gower  
Endowed Primary School on 10th May 2007**

**(Please note that, because of space availability in this edition of the Sibford Scene, this is an abridged version of the full report. Full minutes of the Meeting are available from the Clerk (780391) )**

The Meeting was attended by all the Parish Councillors (Cllr Robin Spicer in the Chair) with the exception of Cllr Muriel Chandler, forty four local residents and the Clerk. Apologies were received from County and District Cllr George Reynolds and Mr Grant, Area Engineer, Oxfordshire Highways. The following matters featured:-

**The Bishop Blaize.** The Chairman referred to the meeting which took place immediately prior to the commencement of the Formal Meeting when Mrs Eileen Haynes presented to Parish Councillors and the ninety seven local residents an update on the situation of the owner attempting to change the nature of the building from licenced to residential. She and the Bishop Blaize Support Group have worked extremely hard in gathering information which indicates that the owner may not wish to effect the sale of the pub as a going concern as it is known that an offer had been made at the asking price of £575,000. A very detailed objection, by the Parish Council, to the change of use has been lodged with Cherwell District Council and grateful thanks were expressed to Cllr Martin Layer for preparing this where his technical expertise was of great value.

**Chairman's Report.** The Chairman welcomed and thanked all present for attending. He gave a full account of the activities of the Parish Council since last year's Annual Parish Meeting. The annual Litterblitz took place on 31<sup>st</sup> March 2007 and grateful thanks were extended to all those who so willingly gave their time to take part. Thanks were extended to the Town Estates Charity for providing the weekly free bus service which is very much appreciated by those who use it. The Special Parish Meeting to debate the installation of street lighting into High Meadow took place on 12<sup>th</sup> April 2007 in the Village Hall. The matter, when put to the vote, resulted in nine local electors in favour and fifty three against. With regard to the Miriam Tebbs' land, thanks are due to Julie Goodlake for her involvement in keeping the land in good order and to Cedric Brown for the work he carries out by way of maintenance.

**Clerk's and Responsible Financial Officer's Report.** During the Financial Year ended 31st March 2007, receipts totaled £8,932 including Precept £5,803, a grant of £800 from The Town Estates Charity towards the purchase of the New Burial Ground, a grant from the Ferris PC towards the purchase of the new Burial Ground and £310 being grants received towards the installation of a new kissing gate at the field side of the Churchyard. Outgoings of £7,301 included the costs of acquiring the new Burial Ground £3,511 and grants to the Village Hall, Sibford Scene, Sibford Gower Endowed Primary School, Royal British Legion and Thames Valley & Chiltern Air Ambulance. The 2006 accounts had been audited and passed as correct. His thanks went to Mr David Soden for once again acting as internal auditor. A precept of £3,000 was requested from Cherwell DC to facilitate anticipated expenditure during the current year. Finally, he thanked the Parish Councillors for their willing support.



**The Town Estate Charity.** Mrs Jean White, Secretary to the Charity, reported that this had been an eventful year for the Trust and many organisations and individuals have benefited from Trust funds. Further improvement at Wheathills have constituted a major cost to the Trust this year. The roadside hedge has been re-layed, two dead willow trees have been cut down and a fence behind the building re-instated. A large sum is still available for the Village Hall for when repairs have been carried out. The Playgroup rent has again been paid. The chiropody and personal alarm costs for elderly residents continue to be paid as does half the cost of the Friendship bus for monthly outings. The free bus which runs to Chipping Norton on the first and third Wednesdays of the month has now been re-routed to include pick-up points in Sibford Ferris. A Christmas special bus to Stratford was arranged by the Trust in response to a resident and this will be repeated each Christmas. The accounts for the year show income from rents, interest on investment and wayleaves totaled £28,334. From this sum payments were made for the maintenance of the School House and Heath Farm, Wheathills, insurance and other expenses. The total distributions were then made under mandatory categories:- Relief in Need £6,797 General Benefit £4,312 School £99

It will have been read that Peter Baadsgaard resigned after twenty years of service and the Trust has been most fortunate that Dr Oswyn "Murray, a long time resident of Sibford Gower, has been able to join as a nominated Trustee.

**Neighbourhood Watch.** Mr John Mulley said that co-ordinators have tried to keep the village warned and encouraged people to report worries and observations to the police and if by phone to follow up by letter or E-mail. The following phone numbers are useful:- Immediate police response -999. Rural Beat Officer (Police Office, Market Square, Deddington - 01869 338444.

**Village Hall.** The Village Hall continues to be used every weekday during term time and, as well as regular hirers, now includes classes in Karate, Tai Chi, Belly Dancing and Art. With a number of private hirers, plus the Hall's own fund-raising events, the Hall's income is coping with the increases in costs of fuel, electricity etc. Last August the internal decoration and ceiling repairs of the main hall were completed with a much appreciated grant of £3,065 from the SITA Trust. The play area was fenced to avoid accidents by people slipping down the surrounding bank. This was done with a 50% grant from Cherwell District Council. The Town Estate Charity granted the Hall a sum of £2,000 to paint and repair outside woodwork on the Main Hall, replace the last small amount of guttering and down spout and replace a back door. The next project is to obtain a grant to enable double glazing

## Micks Sticks

Fire Lighting Wood For Sale

£2.50 per big bag

Call in anytime and ask for

Mick Canning, at

The Old Malt House,

Sibford Ferris

Tel; 01295 780321

to be fitted in the Main Hall. At the AGM Mrs Kathleen Winter resigned as Booking Secretary after some ten years, fortunately Mrs Anne Spackman took over as Booking Secretary. The Chairman said that thanks are due to Muriel Chandler for all that she does in her capacity as Secretary to the Village Hall.

**Highway Matters.** Urgent works receive attention but sometimes the County Council's budgetary constraints cause delays and, indeed, some requests are turned aside when considered



of low priority.

**Footpath Matters.** Again, Oxfordshire Highways is always willing to discuss and deal, when considered appropriate, with footpath matters raised. To safeguard the footpath, almost opposite the Surgery, wooden posts have been installed and similar posts are to be put in place to protect Burdrop Corner from traffic. The posts are at a cost to the Parish Council but will be maintained by Oxfordshire Highways.

**New Burial Ground.** The land was purchased from the Diocese and is now vested in the name of the Parish Council. The cost of the land and the attendant legal and surveyors' fees amounted to £3,611 of which £1,615 was received from Sibford Ferris Parish Council being its contribution on a pro-rata basis and a generous grant of £800 was made by the Town Estates Charity. The land is now due to be leveled and fenced. The cost of the fencing is to be paid for by a generous local benefactor.

**Holy Trinity Churchyard.** The Parish Council and the Parochial Church Council are grateful to the small band of volunteers who cut the grass. Parish Councils have the power to contribute towards the upkeep of Churchyards and two years ago monies were set aside to engage contractors to carry out maintenance work in the event that volunteers felt unable to continue. So, for the time being the volunteers will be relied upon and grateful thanks are extended to them.

**The Village Pond.** Cllr Martin Layer, the link with the Pond Action Team, gave a very full account of the work carried out by the team and a particular mention should go to Mrs Glennis Hardman for co-ordinating the volunteers and remaining enthusiastic in all weathers and against many odds. An inaugural meeting of the Pond Action Team was held on 29<sup>th</sup> September 2006 when sixteen villagers attended and fourteen expressed a willingness to be involved in carrying forward the management recommendations. Since January 2007 approximately forty water plants have been positioned in the pond and all appear to be developing nicely. Three shrubs were placed on one of the grassy banks and thirty five plug plants are due to be placed in the unmown grass behind the pond. The Pond Action Team has invested considerable time and energy in the work to date and there is tremendous optimism and excitement as to what the first year of the management recommendations might deliver.

**Any Other Business.** Mr Fred Inns made the observation that should a child fall into the pond, he or she would stand little chance of survival. Mrs Kathleen Winter, referring to the Health and Safety issue, enquired as to how many children had drowned in the pond. The Chairman said that there had been none during his sixty years as a village resident. Mrs Kay Harries enquired regarding pond liability and whether this might be established. This matter had been covered in Cllr Layer's pond report. Mr Fred Inns queried the ownership of the pond and the surrounding land. He maintained that they had always belonged to the village. The Clerk said that maps exhibited to him by Oxfordshire Highways indicated, that the owner of the land is the County Council but it does not own the pond. As mentioned earlier, exhaustive enquiries of all appropriate authorities have failed to establish true ownership. The Rev'd Canon Timothy Wimbush, referring to the claim that the pond belonged to the village, wondered what was meant by "the village". Who or what comprises the village in this context?

There being no further business to discuss, the Chairman thanked all present for attending and declared the meeting closed at 9.08pm.



## VILLAGE FAYRE JUNE 23RD

Gates will open at 1pm, by which time we hope that the Sibford Club Day Parade led by The Bodicote Band of the British Legion will have reached the Village Hall. Those wishing to be included in the fancy Dress Competition should proceed to the arena. Entries will be classified as follows-Under 4yrs - 4yrs to 9yrs - 10yrs to 16yrs - Adult - Family group - Best hat.

After some entertainment from the Band there will be attractions for all around the field and in the hall. The Fun Dog Show takes place in the arena. Mr Muddles will entertain the children. Refreshments and licenced Bar are available throughout the afternoon. The Raffle, games and competitions will provide plenty of opportunities to spend your money.

Please take your A4 paintings {theme-My House} to the big hall. Enter your scarecrow at the secretary's tent on the day. Entry forms for the Dog Show and the Art Competition will be available from Sibford Stores, or contact Ginny on 780373.

We are planning an evening event on Fayre Day with two local bands providing us with music! Food will be available and bar. Watch for the advertising posters. Do come and enjoy the whole day with us and support your Village Hall.

# Oddjob

CARPENTRY  
PLUMBING  
ELECTRICS

HEATING INSTALLATION  
KITCHEN & BATHROOM FITTING  
BUILDING WORKS  
SECURITY

FOR A COMPREHENSIVE AND RELIABLE  
LOCAL SERVICE

**HUGO SEELY 01295 780355**

FREE NO-OBLIGATION ESTIMATES

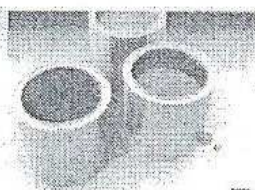
No job too large

Excellent local references available

## Sibford Chapel Anniversary Service

Tuesday June 5th  
at 7.30 pm

The speaker will be  
Rev. Robin Jenkins  
Chairman, Mr. Miles Dixon  
All are welcome



C. A. Berger

Painting & Decorating  
Interiors & Exteriors  
Residential & Commercial

Mobile: 07875 212 315

Office Tel/Fax:  
01295 780140

Approved by Dulux



### **New school building will be of benefit to all**

Exciting developments that will benefit the children and the wider community are underway at the primary school. Improvements and an extension to the Foundation Stage and Key Stage One (Infant) classrooms will be taking place from this summer onwards. In the school's recent very good OFSTED report it was highlighted that some of the working conditions and classroom spaces could be improved, as well as there being a need for new (and more) toilets – something every infant at the school will heartily agree with.

We will be able to maximise the potential of our outdoor space, a strength that has already been recognised by OFSTED. And as Harry, age 5 says, we do need a new library: *"We need a nice new space for the books and we could sort them out. Because, accidentally they get all mixed up."*

But the benefits of the new space don't just stop there – a new ICT (computer) suite will be created, and the building will include access from the ICT suite to tea and coffee making facilities as well as a new disabled toilet. So this is where the whole school benefits, as well as the wider community – use of the computer facilities will be made available to clubs and is planned to form part of our extended schools provision. The plan is that no child in the villages will be left without access to the Internet for homework purposes, once the facility has been set up and is running.

The school forms the very heart and soul of the Sibfords and its surrounding villages, as a nurturing ground for the children of our community, a place where lifelong friendships are made (between parents and children alike) and in the future, as a facility that will be of benefit to the whole community, directly and indirectly. Crucially, the improved and state-of-the art facilities at the school will continue to attract families and ensure that the local community is kept as a thriving and sought after place to live in.

But we can't do it all alone. We need to raise a further, heart-stopping £30,000. Look out for the fundraising thermometer that will soon be up outside the school to check our progress. And please help us. We will shortly be running a series of fundraising events and asking for sponsorship and donations. Look out for the posters and leaflets that will soon be coming your way, and if you want to help, donate or get involved, then please do call in, phone or email us at school.

Please consider supporting us and investing in the future of the young people of your community.

Joanna Rigg Tel: 01295 780270  
Email: [headteacher.3005@sibford-gower.oxon.sch.uk](mailto:headteacher.3005@sibford-gower.oxon.sch.uk)

### **Oxon Computers** **Qualified PC Engineer**

**Danny, Company Owner**

PC repair, maintenance & configuration  
Tel: 01295 788766 Mobile: 07767 025752  
Fax: 01295 788766

Email: [oxoncomputers@lowriser.co.uk](mailto:oxoncomputers@lowriser.co.uk)  
[www.oxoncomputers.co.uk](http://www.oxoncomputers.co.uk)





At our meeting in May, Wendy Dare came to talk on the garden at Mill Dene. She told us how they had started the garden and how it had all evolved and we are now looking forward to our trip to see the garden on Wednesday June 6th when we will meet at the Village Hall at quarter to six and take as few cars as is needed. Non members are very welcome to join us.

There are still places for our trip to Wisley on 30th June. We need more people or it will be cancelled.

Next on the calendar will be the Annual Show on Saturday 25th August. I do hope you have all been doing your handicrafts and taking photos.

*Lodge to Let, Cornwall/Devon borders*

*Slps 8/10 in four bedrooms, fitted kitchen, bathroom, shower room, Panoramic views, in quiet position.*

*Facilities include indoor/outdoor pool, tennis courts. Dogs permitted. Excellent base for North and South coast beaches, National Trust, Devon, Dartmoor and Plymouth. Very reasonable rates :call Sue Lovatt on 01295 788848. email : [lovfam@btinternet.com](mailto:lovfam@btinternet.com) or pick up leaflet in the Ferris shop.*

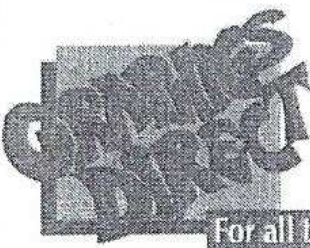
**FARMHOUSE  
BED AND BREAKFAST  
GRANGE FARM  
SWALCLIFFE**

*Enjoy warm hospitality & peaceful surroundings in our comfortable 18<sup>th</sup> C Farmhouse*

**CONTACT: BARBARA TAYLOR  
TEL. 01295 780206**

Contributions for the  
July

Sibford Scene  
to the Shop or Editor by  
June 19th



The Firs, Hook Norton, Banbury. OX15 5DD  
Email: [enquiries@graphics-direct.co.uk](mailto:enquiries@graphics-direct.co.uk)  
Phone: 01608 730555 Fax: 01608 730271

**For all types of Vinyl Graphics & Signage**

**Theresa Harper**

**DESIGNING PRODUCING & FITTING**

**Bed & Breakfast  
AGDON FARM  
Nr Brailes**

**Comfortable rooms  
in old stone farmhouse  
Tel: Maggie Cripps  
01608 685226**



## ARTWEEKS INVITATION

Luke Mulley — A.S.Designs and Mollie Picken

Would like to invite you to their exhibition of Furniture and Textiles at  
The Old Post Office, Sibford Gower, Banbury. Tel. 01295 788822

The Exhibition will run from

**Saturday 26th.May to Sunday 3rd.June 2007**

The opening times are 12 noon till 6pm daily.

We would be delighted to see you.

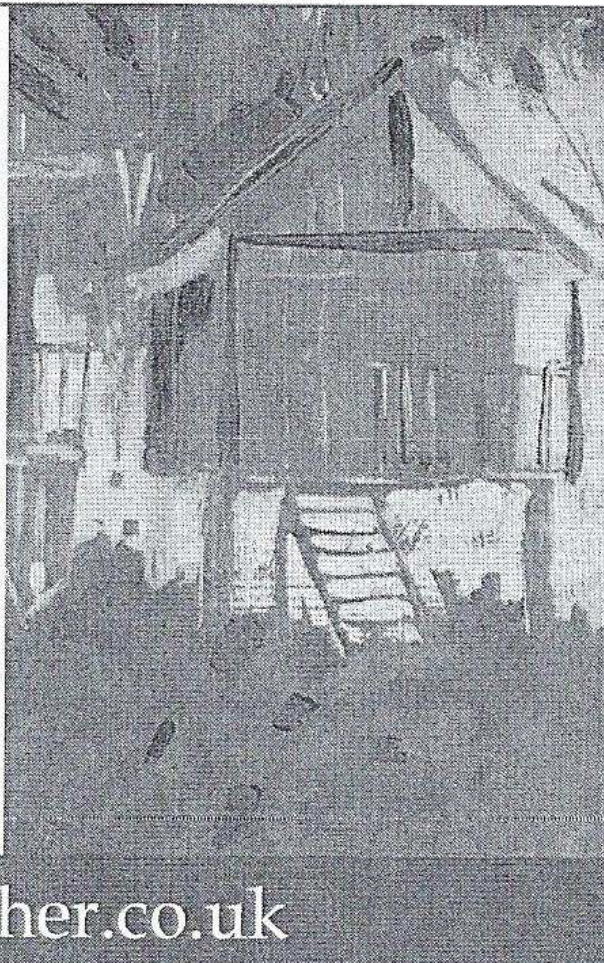
## Art Exhibition

by Nigel Fletcher

From Sat 19th May  
to Sun 3rd June From  
12 to 6pm

at The Mission Room  
Sibford Gower

Opposite The Wykham Arms  
late nights thursdays 'till 8pm



[www.nigelfletcher.co.uk](http://www.nigelfletcher.co.uk)

**Bed & Breakfast or Self Catering**  
Self Contained & Over Looking Garden

### 'THE LOFT'

Forge House  
Swalcliffe

Comfort & Privacy  
Contact Carole Ralph

**Tel/Fax: 01295 788677**

[Mysite.freemove.com/the\\_loft](http://Mysite.freemove.com/the_loft)



**QUALITY FISH DIRECT  
FROM**

Proprietor: T.P.Martin  
Tel: 07812 361853

**GRIMSBY MARKET**

Best fresh fish and shell fish to your area  
direct from Grimsby on the  
Lincolnshire coast

I'll be at Sibford Village Hall car park

**EVERY MONDAY from  
approximately 4pm till 6pm**



## Cotswold Close Play Area Update

The District Council has now released a portion of the Section 106 funds to the Parish Council, and the contractor for the refurbishment, Trevor Stewart, has been paid a deposit to commence work. He has reported that there are no delays from his suppliers for the items he requires, and he hopes to start work on site in early June. Meanwhile, the Parish Council would like to thank David Stewart of H M Stewart & Sons for kindly offering the services of a digger and driver to clear the site at Cotswold Close ready for Trevor to start work. This will help the project immensely and the Councillors are very grateful to David for his assistance.

### **Warriner Choral Society**

#### **Music for a Summer's Evening**

Featuring popular choruses from the majesty of Grand Opera through the merriment of G&S to West End Musicals

Saturday 7th July 2007 St Mary's Church Bloxham 7.30 pm

Tickets £8.00 (£7.00 concessions)

from Jenny on 01295 721224 or on the door

### **Serenity at Sibford Gower**

Gautherns Barn (formerly The Beauty Salon) We are pleased to announce the re-opening of the new salon - Serenity.

We offer you a full range of Guinot facials and body treatments, holistic treatments, amazing pedicures plus lots, lots more!

Guinot Body Polish and Self Tan just £22

For an appointment please call Jo Plumley  
01295 788463

### **Cutlery and Crockery for Hire**

Are you holding an event that you need to hire crockery for?

I have enough for 120 people including cruets, milk jugs, sugar bowls and serving spoons.

15p an item, and return it dirty!

Pick up and return required from Swalcliffe  
From private dinner parties from 10 to the one off party for 120 guests all you need to do is call:

Vicky Taylor on 01295 788924  
07841910037

### **FRANCIS MORDAUNT MCFHP MAFHP**

*Member of the Open College of Foot Health Professionals*

*Member of the British Association of Foot Health Professionals*

### **FOOT HEALTH PROFESSIONAL**

To enquire about a home visit please

telephone: 01295 730615

Professional Foot Care in Your Own Home

### **Richard Wallington**

**Builder**

Block Paver Drives a Speciality

Also Extensions, Patios

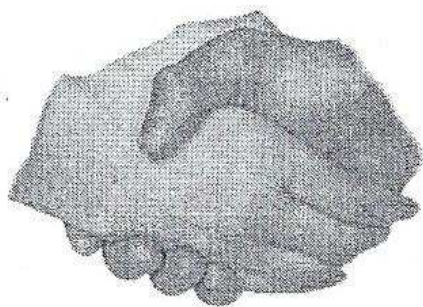
Fencing etc.

High Quality Work, Free Estimates

01295 780705 07743 932545

(Sibford Gower) (Mobile)





## Friendship Club

We have held our A.G.M. and there are a few changes to be noted. Our new chairperson is Eve-line (Tel. 263460) and our new Secretary is Val (Tel 01608 685564) also a new member on the Committee, Marion. As with most Clubs with comings and goings we are able to accept 1/2 more members, so anyone in The Sibfords who wish to join us PLEASE contact someone on the Committee or any member. I must thank Marion and Jean for providing the teas for the A.G.M. One other thing, the yearly subs are now due so please see Sandra at the June meeting, where our new Secretary will inform us what she has in mind for this year.

### *Music & Songs for a Summer Evening At Tadmarton Manor*

*Saturday 2 June – 6.30 pm – 9 pm*

**£7.50 (inclusive of light supper and glass of wine)**

Tickets available from Jane Asser 780212

or Margaret Tyrrell on 01295 269457.

**REIKI**  
HEALING FOR HUMANS  
AND ANIMALS

**LYN SIMMS**  
MASTER PRACTITIONER

**01295 780 655**

### **CASHMORE ANTIQUES**

*Period Timber Restorer*

Beams, doors, floors, furniture repaired and  
re-coloured by hand with NO MESS  
also

brick and stone walls constructed or repaired  
paving, terracing, steps, patios, ponds built

**01608 643441 or 07733428220**

Restorer for 25 yrs – portfolio available



**Sarah Walker**

**Vivienne Nott**

*fresh flowers, fresh ideas*

*Gorgeous bouquets & arrangements*

*Wedding bouquets, churches,  
marquees and receptions*

*Flowers for supper parties,  
house parties and celebrations*

*Funerals and memorials*

*Contact :*

*Sarah :01295 788595 Viv:01608 652819*



**John Mulley**

B.Sc (Chiro) M.C.C.

McTimoney-Cortey  
Chiropractor

**A. M. Chiropractic Clinic**

1<sup>st</sup> Floor, 88 Warwick Rd, Banbury, OX16 7AJ

Telephone: **01295 262100**

**01295 780628**

Mobile: **07813 214020**

G.C.C Registered

Also treats animals  
Member of the Faculty of Animal Chiropractic



## HOLY TRINITY CHURCH NEWS

The first in the series of Saturday Coffee Mornings in Sibford Church was held on April 28<sup>th</sup> and was well attended and a great success. There was a surplus of £237 of which £100 was donated to the Swalcliffe Church Tower Restoration Fund. Our sister church is having to undergo substantial repairs to its tower at vast expense and needs a great deal of help. The next Coffee Morning will be on **7th July from 10am to 12 noon** and not as hitherto advertised as 2<sup>nd</sup> June.

The Family Service on Sunday 13<sup>th</sup> May had as its theme *Colours*. The central part was the story of Joseph in three episodes accompanied by music from the well known musical. The Rector gave a talk about the various colours of the Church's Year and at the request of the children, hymns were accompanied by musical instruments and coloured streamers. Altogether a highly imaginative service much enjoyed by all. The next Family Service will be on **17<sup>th</sup> June at 10.00 am** and will celebrate Fathers' day so this is a three-line whip for all Dads. On **July 8<sup>th</sup>** there will be a Pets Service of the type much appreciated in Tadmarton for some years.

There was a large attendance in the Village Hall to discuss how best to serve the children of the parish. Many ideas from those present were attached to boards placed on the walls and these would be examined and discussed by the Family Service organizers.

The new Bishop of Oxford, Rt Rev John Pritchard will be conducting a service in **St Mary's Church, Banbury on June 26<sup>th</sup> at 7.30 pm**. This will be the first visit of our new bishop to the area and during the service, all churchwardens from the local parishes will be commissioned.

Advance notice of other Parish events: **21<sup>st</sup> July** a barbecue at **Woodway Farm**, the home of Guy and Sue Wilson to repeat the great success of last year; the annual Church Fete on **11th August** in the Village Hall; the annual Christmas Bazaar on **10<sup>th</sup> November** in the Village Hall.

There was an omission in last month's article when thanks and congratulations were extended to Ian Warden on the Easter Garden in church. Ian says that he had important helpers in Amelia and Isabelle Earle, without whose help he could not have achieved the eventual result and our previous comments should be extended to them.



## Church Services

Society of Friends		Sunday at 10.30 am
Methodist		Sunday at 11.00 am
Roman Catholic Mass	Wroxton	Sunday at 9.00 am
	Brailes	Sunday at 11.30 am
Baptist	Hook Norton	Sunday at 10.30 am
Church of the Firstborn (Bridleways S.Gower)		Sunday at 10.30 am

Church of England, Holy Trinity, Sibford Gower.

June

Sun 3rd Trinity Sunday, Benefice Eucharist 10.30 am

Sun 10th Holy Communion 8.00 am  
& Holy Communion 9.30 am

Sun 17th Family Service for Fathers Day 10.00 am

Sun 24th Holy Communion 9.30 am

July

Sun 1st Benefice Eucharist, 6.00 pm at Swalcliffe

Sun 8th Family Service 10.00 am

Open Garden at Katharine House Hospice  
The Simon Weatherby Garden Open Day will be  
Sunday June 3rd, from 2pm to 5.00pm  
Entry £1.50 - Children Free



### RED HORSE VALE LTD

All Types of Fuel, Coal, Smokeless, Gas,

Logs, Kindling, Barbecue Needs

Central Heating Oil, Oil Tanks & Coal Bunkers

Landscape & Building Materials, Garden Centre  
& Garden Supplies. Farm & Country Sundries

Equestrian Products, Horse & Pet Feeds

Open: Monday - Saturday 8am - 5pm

Windmill Farm, Banbury Road (A422),

Oxhill, Warwickshire CV35 0RP

Tel: 01926642832

Fax: 01926 642 853

## *Reflexology Remedial Massage*

**Elizabeth Webber**

MAR.LCSP (Phys)

15 years experience

Godswell Natural Therapy Centre

Bloxham, Banbury

**Tel: 01295 - 788101**



# Sibford Bus Services

## Free Bus Service

To Chipping Norton Wednesday June 6th & 20th.

Departs 10 am and Returns 12 noon

Pick up points are; The Colony, High Meadow, Cross Roads, Village Hall,  
Lanes End Corner & Cotswold Close (Ferris)

## Cherwell Rural Dial-A-Ride Scheme

A mini bus with tail-lift to take **elderly or disabled people** and escort to Banbury (max fare £1.60) Door-to-Door service. Book at least one day in advance. Operates on Wednesdays & Thursdays. Phone 263777 for details.

BCTA also takes bookings for groups of 8 or more on a weekly/monthly basis (Wednesdays & Thursdays) to and from Banbury. Tel; 263777

## BUS 480 - Times from 5th June 2005 - Mondays to Saturdays

### *From Banbury towards Shipston*

Banbury Bus Station dep.	09.00	11.00	12.30	13.30	15.30	17.10	18.10
SIBFORD GOWER School	09.25	11.25	12.55	13.55	15.55	17.35	18.35
Shipston, Tilemans Lane	09.47	11.47	13.17	14.17	16.17	17.57	18.57

### *From Shipston towards Banbury*

	NS		S	NS				
Shipston, Tilemans Lane	06.50	07.45	08.50	.....	09.50	11.50	13.20	17.10
SIBFORD GOWER School	07.12	08.07	09.12	09.12	10.12	12.12	13.42	17.32
Banbury Bus Station	07.37	08.35	09.37	09.37	10.37	12.37	14.07	17.57

Buses serve Sibford Ferris two minutes before the times shown at Sibford Gower towards Shipston and two minutes after the time shown at Sibford Gower towards Banbury.

Notes: S = Saturdays only, NS = Not Saturdays.

Most journeys, where possible, will operate low floor wheelchair accessible vehicles.

*Sorry, No services on Sundays or Public Holidays*

For complete times at all of the intermediate places that are served by 480 please see new timetables available from bus drivers and in the Village Shop.

The Fare structure has changed: Adult Fare £1.90 each way

Child (5-16yrs) £0.95

Family ticket (2 Adults + up to 3 children) £8.40 return



# Calendar of Events

## June

Art Weeks Exhibitions on until June 3rd p18

Sat 2nd Sibfords Society Farm Walk p6

Sat 2nd Music and Songs at Tadmarton Manor p20

Sun 3rd Open Garden at Katharine House Hospice, Adderbury 2 - 5pm p22

Sun 3rd Village Hall Table Top Sale 2 - 4 pm

Tue 5th Chapel Anniversary Service 7.30pm p15

Tue 12th W.I. History of Chocolate p7

Wed 13th Mobile Library in the Sibfords (2.40 - 4.10pm)

Sun 17th Open Gardens in Sibford Gower 2 - 6 pm p24

Sat 23rd Club Day re-enactment and Village Fayre. From 12 noon p15

Wed 27th Mobile Library in the Sibfords (2.40 - 4.10pm)

Sat 30th Horticultural Society trip to Wisley Gardens. p17

Sat 30th Scouts Tea & Cakes and Sale. Village Hall 2 - 4pm

## July (part)

Sun 1st Scout Group Treasure Hunt 3pm p5

Sat 7th Church Coffee Morning 10 - 12 noon. P21

Sat 7th Music for a Summers Evening in Bloxham Church. p19

Wed 11th Mobile Library in the Sibfords (2.40 - 4.10pm)

Wed 11th Sibford Ferris Parish Council Meeting 7.45pm p9

Sat 21st Barbecue in aid of the Church. Woodway Farm p21

Wed 25th Mobile Library in the Sibfords (2.40 - 4.10pm)

Cover picture - Vintage Tractors ploughing at Grounds Farm 20th May 07

### Sibford Gower Open Gardens

Sunday 17th June 2 - 6 pm

4 gardens open for the National Gardens Scheme  
£3 entrance to 4 gardens, accompanied children free.

### Sibford Scene

Editor; Adrian Lamb. Grounds Farm, Sibford Ferris. 780380

e-mail [adrian.lamb@care4free.net](mailto:adrian.lamb@care4free.net)

Treasurer; Timothy Wimbush, The Rectory, Acre Ditch, S.Gower  
780555

Advertising; Ivor Hopkyns, Elmridge Farmhouse, Sibford Gower,  
Banbury, Oxon. OX15 5RT. Tel 788367