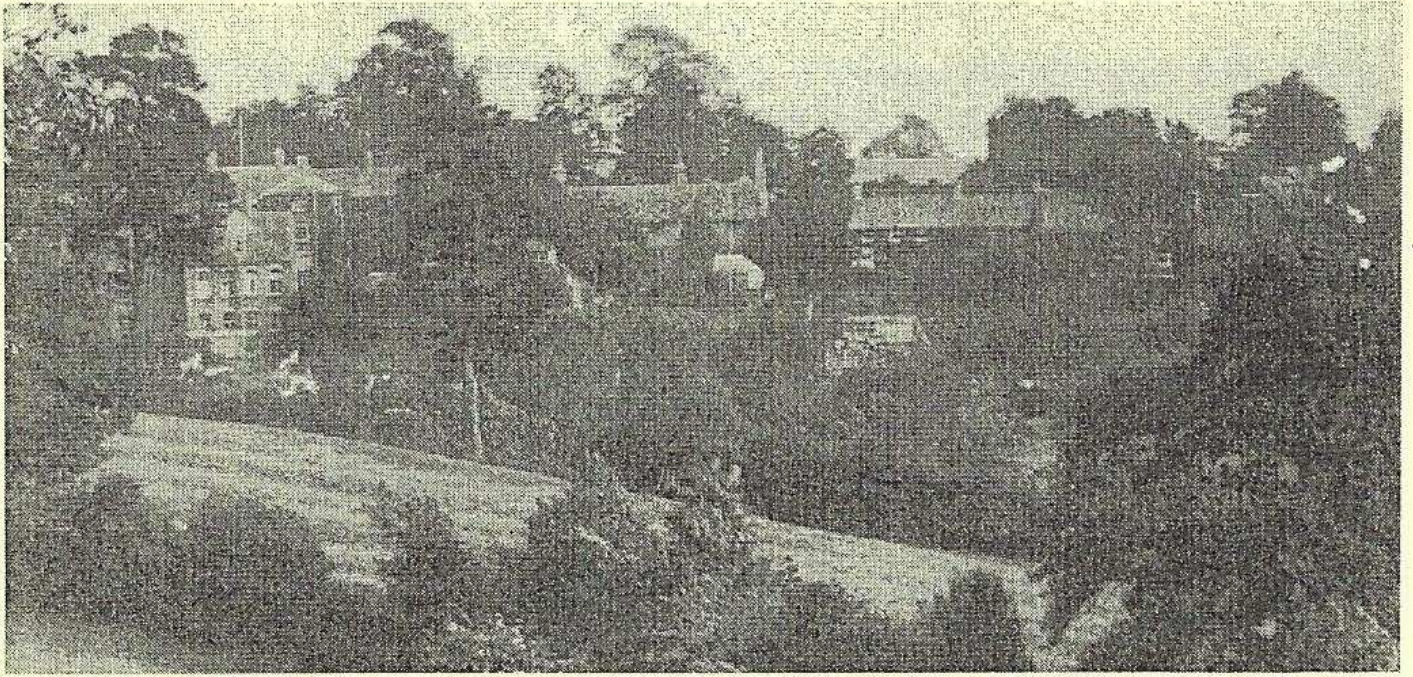


Sibford Scene



October 2005

No. 277

Jumble Sale in aid of Katharine House Hospice
Saturday October 15th 2pm Sibford Village Hall.

AN EVENING WITH TERRY WAITE C.B.E.
18th October 7.30pm at Sibford School

Saturday, October 22 at 7.30 pm
Heart of England Jazz Band
At Sibford Village Hall

Guide Dogs for the Blind
Coffee Morning
Wednesday 26th, Westerways, Sibford Ferris 10-12 noon

Cottage Crafts
Malcolm's Cottage, Tadmarton
28, 29 & 30th October

Nature Notes

Aug. 8th. I don't think anyone had walked across lowerway fields for a few hours before we went that way this afternoon as I have rarely seen as many grasshoppers as rose from the path in the ungrazed field.

Aug. 9th. While cycling this evening we found a plant of, the now quite rare, knapweed broomrape which is a parasitic plant taking its sustenance from the roots of knapweed.

Aug. 12th I cleared some snails from a rainwater gully yesterday but there were almost as many there today so I threw them on to the lawn and kept an eye on them. They were soon on the move turning to make a bee line for the gully and were all back within an hour.

Aug. 14th. To Borth y Gest near Porthmadog in Wales where we are staying in a house on the front overlooking the estuary.

Aug. 15th. All of our party walked up to the Roman Steps which go over a pass in the Rhinog mountains. On the way back 3 of us called in at an R.S.P.B. hide where they had three telescopes trained onto an ospreys nest about a mile away. The three young had recently flown but they showed us a video taken before they left by a camera erected near the nest. While I was looking through a telescope at the empty nest one of the old birds brought a fish in and the young ones were soon back to get their share. There were shouts for me to come and look at the T.V. pictures of it but I was getting a good view of them through the telescope. We were lucky as that was the only time that they had been seen at the nest that day. We also saw some ravens and a buzzard.

Aug. 16th. We wake here to the sound of oystercatchers chattering loudly as they run around with their beaks pointing down towards the sand. I don't know what this ritual is all about.

Aug. 17th. Went to National Trust land at the tip of the Llyn Peninsular. It was a marvelous sight with dwarf gorse, heather and harebells all in full bloom over a large area. Less showy but still beautiful were the carline thistles and rampion. We could hear choughs but it was some time before they came up from the cliffs and we could see them. There were also plenty of ravens around. Looking across at Bardsey Island on this lovely day it was hard to believe that 2 of my friends had to stay there 7 extra days before the weather allowed them to do the return trip.

Aug. 18th. Went to look at the salt marshes at Morfa Harlech which are famous for their range of wild flowers and found huge numbers of sheep

grazing there. We wondered whether salt marsh grazed lamb made a higher price.

Aug. 19th. There are 2 or 3 fish, that we are told are grey mullet, that come in with the tide to feed in shallow water often standing on their heads with tails out of the water. The tidal range has increased greatly since we came. A boat called Aquarius which stands on its keels and rudder was so far above high tide mark when we came that we wondered whether it could ever be floated off, but now as my grandchildren say Aquarius has lift off and the tide goes out to expose much more sand. While we sheltered in the lych gate of an isolated, disused church we read the story of a black boy who was brought here in the 17th century when he was 6 years old. He trained as a gardener, married and had 7 children and many of their descendants still live in this area. In some sand dunes that have SSSI status we found sea holly, sea bindweed, eyebright and sea spurge.

Aug. 20th. We find that a small area of sea washed turf only about 200 yards from our front door contains much the same collection of flowers as we saw at Morfa Harlech including sea spurry, thrift, sea aster and sea lavender.

Aug. 30th. To check that the insect on the mat inside our front door was a hornet I set the open insect book by it. Obliging it crawled up onto the book for comparison with its picture before flying away.

Sept. 17th. After a cold day yesterday we had the first frost of the autumn this morning.

Sept. 18th. It has been a poor year for butterflies but I have seen several humming-bird hawk-moths over the last few weeks or was it one several times?

Sept. 19th. This afternoon I was surprised to see a carrion crow settle in our blenheim apple tree and set about devouring an apple with great gusto. I don't ever remember seeing one eat apples before. I am now wondering whether he also took our plums that mysteriously disappeared a few days ago.

Ann Woolgrove
FABRICS, CURTAINS & SOFT FURNISHINGS

Handsewn & interlined curtains & pelmets our speciality
Roman & Roller blinds
Customised design service and home consultancy
Every kind of fabric from many leading manufacturers
Decorative Poles, Tie backs & Trimmings

<i>Loose Covers and Cushions</i>	<i>Lampshade making</i>
<i>Wallpapers & Interior Decoration</i>	<i>Custom made Bedspreads & Headboards</i>

Tel/Fax: 01295 788145

****Live at Sibford Village Hall****

Saturday, October 22 at 7.30 pm

Heart of England Jazz Band

A line up of six musicians who have been playing jazz for many years with the Midlands' leading bands. They have performed at most of the major jazz clubs in the UK and at numerous jazz festivals, at home and abroad.

Join us for an exhilarating evening of traditional jazz.

Tickets: £10	from	the Village Shop	
Concessions: £8		Muriel Chandler	(780025)
Licensed bar		Terry Young	(780386)

Sibford Stores & Post Office

Sibford Ferris

OX15 5RG

Tel: 01295 788317 / 788348

Your Local Convenience Store

Your local newsagent, we deliver newspapers and magazines 7 days a week to all the surrounding area, always a wide selection of newspapers and magazines available in the shop. Place your regular order today

Bread, cakes and savouries baked on the premises throughout the day.

We are your local National Lottery Agent

Photocopying, fax and mailing service available on the premises.

Agents for Dry Cleaning and Laundry.

Chilled & frozen foods, groceries, cigarettes, beers, wines and spirits, fresh fruit & vegetables, pet foods, medical and toiletries and lots, lots more.....

Telephone your grocery order for free local delivery 7 days a week.

OPENING HOURS

Monday to Saturday 5.30am to 6.00pm

Sunday 5.30am to 1.00pm

Friendship Club

We are pleased to report that one of our oldest members - Bea Tanner - is now well on the road to recovery after her stay in hospital. Before this magazine is printed she will have celebrated her 95th birthday, congratulations Bea we all wish you well.

We would like to thank Alice and all her merry helpers for the garden party which she held in August. She made almost £150 for the club. Well done! At our meeting in September we received a talk about Singapore and Australia which was very interesting and many photographs and souvenirs were passed round for people to peruse. Refreshments were made and served by Jill with the help of her grandson who was staying with her, thank you Jill, they were delicious.

Diary Dates

Tuesday October 4th. Village Hall at 2.00pm. Mary Watkin will be giving a talk on "Life as a Teacher".

Tuesday October 18th. We have arranged to go to Lyneham Golf Club for lunch, which will be served at 12.30. Coach times will be given at the previous meeting.

Tuesday November 1st. Village Hall at 2.00pm.



The Bishop Blaize Inn

17th Century Freehouse

Burdrop, Sibford Gower

Tel. (01295) 780323

Sam and Sheila welcome you

Senior Citizens Special

15% **OFF** all meals on our main menu board

Monday - Friday Lunch

(For persons 65 and over)

Dont forget - Monday night is take-out night
Fish or double jumbo sausage and chips
NOW includes ALL meals from our childrens menu

Traditional Sunday Lunch

12noon til 2pm

Bookings Advisable

NO food will be served Sunday evenings



Playgroup time is here again,
We've been celebrating Harvest and looking at grain,
We've baked tarts and cooked bread,
And now we are looking at trees instead.
We're counting nuts and printing leaves,
We're painting and sticking, pulling up our sleeves,
It's nearly Autumn and the colours are bright,
Through magnifying glasses we are examining the glorious
sights....

We welcome some new children: Emma, Matthew, Tilly and Jack, and say "hello" to the new Playgroup Committee: Claire Inns-Chairperson; Lynne Wealsby-Treasurer and Becky Skinner-Registration Secretary. We also have two new members of staff to our team; Helen Earle and Sue Childs.

Michelle Knapman, Supervisor, has just gained a distinction in the Foundation Degree in Early Years and is continuing with the final year of BA(hons) in Educational Practice (Well done!)

Preparations are being made for our Annual Christmas Bazaar, on 26th November. As well as the traditional Tombola, there is going to be a Jam Jar Jamboree along with many other stalls together with a grand prize draw. All donations of prizes, bottles for Tombola, empty (or full) jam jars, or even help on the day would be greatly appreciated. (Please contact Claire Inns 01295 780035)

We currently have vacancies for our playgroup which runs Monday-Friday mornings, 9.00 am - 12.00 pm and for more information, please call Michelle or Judith on 01295 780998.

Patrick Bowen Fine Art Consultants

Patrick Bowen BA (Hons) Lond. MRICS

Asset Management 2 Stewarts Court

Professional Inventories Sibford Ferris

Valuations for insurance, Oxon

probate, Market OX15 5QX

and family division

Sale and aquisition Phone 01295 780999

Mobile 07979 911892

Email: patrickbowen@btopenworld.com

Contributions for the
November
Sibford Scene
to the Shop or Editor
by
October 18th



Our autumn programme started with an evening of aural archive material cleverly edited, compiled and presented by Keith Hicks. Many memories were stirred as we listened to villagers, past and present, talking about their memories of everyday life in the Sibfords. There is still much recording to be done to capture more thoughts about life in the past as well as to record and comment on what is happening in our village now. Today's stories and memories will provide the history and anecdotes for the future.

Our next meeting will be held in the Village Hall at 8pm on Thursday 20th October, when Bill King will be talking to us about 'Dad's Other Army'. This promises to be a most entertaining evening with stories and artefacts from the Second World War brought to life in a factual but humourous way. Do join us if you can and non-members are also warmly invited to come along.

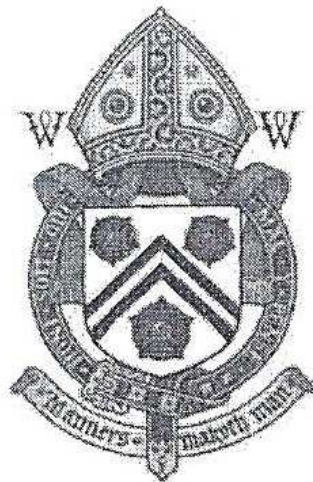
Fire Lighting Wood
For Sale
£2 per big bag
Call in anytime and ask for
Mick Canning, at
The Old Malt House,
Sibford Ferris
Tel; 01295 780321

The Wykham Arms

TEMPLE MILL ROAD
SIBFORD GOWER
OXFORDSHIRE

01295 788808

WWW.WYKHAMARMS.CO.UK



ENJOY A GREAT VALUE
GASTRONOMIC EXPERIENCE
FROM CHEF PROPRIETOR
IAN WALLACE AND HIS
TEAM OF FRIENDLY STAFF

HOOK NORTON REAL ALES
TERRACE DINING
LARGE BEER GARDEN
CAR PARK

TWO COURSE LUNCH MENU

£12

SERVED TUESDAY TO SATURDAY – ASK YOUR WAITER FOR DETAILS

FULL A LA CARTE MENU ALWAYS AVAILABLE

LIVEARTS AT ST. MARY'S CHURCH, BANBURY
Presents..

ACOUSTIC TRIANGLE

Malcolm Creese, Tim Garland and Gwilym Simcock

Saturday 22 October 7.45 pm

'A trio of world-class virtuosi.....exquisitely passionate and inspired....' BBC Music Magazine

A unique blend of melodic modern jazz, European 'classical' and folk music from around the world.

Visually engaging, fun and thought-provoking

Tickets: £10, £8, £5 (student)

Tel: 01295 259855 or book online

www.livearts-at-stmarys.co.uk

Heavy Vehicle Count - Sibford Ferris Volunteers Required

Concerns have been raised about the number of large vehicles using Sibford Ferris Main Street as a through route. Oxfordshire County Council has limited resources to carry out a lorry count. If anyone would be willing to spend an hour or two on a given day counting lorries, Sibford Ferris Parish Council would be pleased to hear from you. You can either leave a note at the shop, telephone Anita Spencer, clerk, on 788557 or let one of the Councillors know. (Peter Neighbour, Barbara Crabtree, Stephen Hopkins, Arnold Lamb or John Simms)

◆◆◆◆◆◆◆◆◆◆
Aromatherapy, Swedish Massage
Indian Head Massage, Reiki,
A Holistic attitude to health.

Virginia Bennett RGN 01295780373



LOGS



TOP QUALITY, SPLIT, SEASONED
HARDWOOD LOGS
BULK OR BAGS

DAVID RANDALL TREE WORK
01608 738109 / 07831 571176

SIBFORD SCHOOL OUTREACH PROGRAMME

The purpose of Outreach is for students at the school to be involved in the wider community by visiting, in pairs, its older members in their homes once a week for half an hour. All those participating in this programme have had their lives enriched by the experience and the relationships developed are often strong, consisting of mutual respect and a genuine interest in what each person has to say.

If you are interested in being involved in this programme please contact
Lyn Usher, Outreach Programme
Co-ordinator by telephoning 01295 781200.
Sibford School, Sibford Ferris, Banbury, OX15 5QL

Katharine House Hospice Jumble Sale

Saturday October 15th 2pm

Sibford Village Hall. Adm 25p.

Any donations of Jumble, bric a brac, books etc can be left with

Bernie & Andrew Jones 780343.

Any other offers of help on the day, raffle prizes, cakes etc would be most welcome.

Many thanks for your support.



BUILDING PLANS

BUILDING REGS. SUBMISSIONS

NEW BUILD EXTENSIONS ALTERATIONS

**D.R. BOVILL, B.A.
PLANNING & DESIGN CONSULTANT**

PRIVATE AND TRADE ENQUIRIES - PLEASE CALL

01295 780609 OR 07890 591783

NOAH'S ARK

PAINTING
COMPANY

Inspiring a generation to say **NO** to magnolia!

EVERY FORM OF
**INTERIOR AND EXTERIOR
PAINTING AND DECORATING**

01295 257785

Approved by **DULUX**

Richard Wallington

Builder

Block Paver Drives A Speciality

Also Extensions, Patios

Fencing etc.

High Quality Work, Free Estimates

01295 780705 07743 932545

(Sibford Gower) (Mobile)



Another show has come and gone and everyone is in agreement that it was one of the best. The entries were up significantly and so another marquee was pressed into action, for which the committee was very grateful. The halls and marquees looked very impressive and a big thank you to everyone who entered. Without you we wouldn't have a show. The show committee also thank everyone who helped to set up and take down chairs, tables, tents etc.

A number of plates & vases were left after the show and can be collected from Gill Soden.

The Cup Winners

The Sibford Rose Bowl
The Albert Spicer Trophy
The Society Cup
The Mrs F Padbury Cup
The Dr. H Taylor Cup
The Mrs. F Padbury Rose Bowl
The Ted Webb Trophy
The Village Cup
The John Sabin Cup
The Banbury Marquee Trophy
The Junior Cup
The Keith Hicks Cup
The S J Sabin Cup
The Committee Cup

Andy Newbold
Mike Clarke
Bill Wealsby
Glennis Hardman
Kate Randall
Jane Evans
Pauline Inns
Martin Layer
Tracy Warren
Megan Gilkes
George Berks
Polly Berks & Jamie Lamb
Kilian Aston
Jane Thomas

The first talk of the season was given by Mr Hardy on vegetable growing. Audience participation was definitely expected and some traditional garden lore was laid to rest. An eye opening and enjoyable evening was had so we now know which veg. varieties to grow and how to make excellent compost!

The next meeting will be on **Wednesday 12th October** at 8.00pm in the Village Hall. It is the AGM followed by Liz Nicholson, from Nicholson's Nurseries to talk about 'Trees'. All are very welcome to attend.

John Mulley
B.Sc (Chiro) M.C.C

McTimoney-Corley
Chiropractor

A. M. Chiropractic Clinic
1st Floor, 88 Warwick Rd, Banbury, OX16 7AJ

Telephone: 01295 262100
01295 780929

Mobile: 07813 214020

G.C.C Registered

Also treats animals
Member of the Faculty of Animal Chiropractic

Sibford School is proud to present an Evening with

Terry Waite

Terry will tell the amazing story of his life in captivity. He will be accompanied by concert pianist, **Vincent Billington**, playing Terry's favourite piano music.

18th October 2005 at 7.30pm Tickets £15

Available from the Terry Waite Box Office, Sibford School
Telephone 01295 781200

AN EVENING WITH TERRY WAITE C.B.E.

On October 18th at 7.30pm there will be a momentous concert at Sibford School, when the legendary TERRY WAITE will be relating his own heart-rending account of how he survived 1,763 days in captivity.

Almost four years of Terry's own capture as a Beirut hostage were spent in solitary confinement when he was chained to the floor in total darkness. Apart from his family, the things he missed most of all were books and music and during this concert, VINCENT BILLINGTON, will play some of the music that is close to Terry's heart, and music that fits the mood of his story. The combination of words and music is a unique and compelling experience.

Terry is instantly recognisable anywhere in the world, and his brilliant speaking skills are in great demand all over the globe. He is known by Kings, Queens, Presidents and Prime Ministers, yet he remains humble and very approachable. Terry will be delighted to meet his audience after the concert and also to sign copies of his book.

Vincent Billington is an internationally acclaimed concert pianist. He has played full time for the BBC, and appeared with Halle, Royal Liverpool Philharmonic, Birmingham, BBC Welsh orchestras, and with Max Jaffa. He also played for the then Prime Minister, John Major, at the Houses of Parliament in a series of concerts arranged by the former Speaker of the House, Betty Boothroyd.

GODSWELL NATURAL THERAPY CENTRE

*Godswell Lodge, Church Street, Blaxham
Banbury, Oxon OX15 4ES*

**Acupuncture, Alexander Technique,
Aromatherapy, Art Therapy,
Chiropody, Chiropractic,
Counselling & Psychotherapy,
Cranio-sacral therapy, Homocopathy,
NLP, Nutrition, Physiotherapy,
Reflexology, Remedial Massage,
Reiki, Spiritual Healing,
Shiatsu, Yoga.**

**Fully qualified professional therapists
For information Ring 01295 720347**




DAVID MALONE


HIGH CLASS PAINTER AND DECORATOR

Cherington
 Warwickshire
 CV36 5HP
 Tel: (01608) 685908



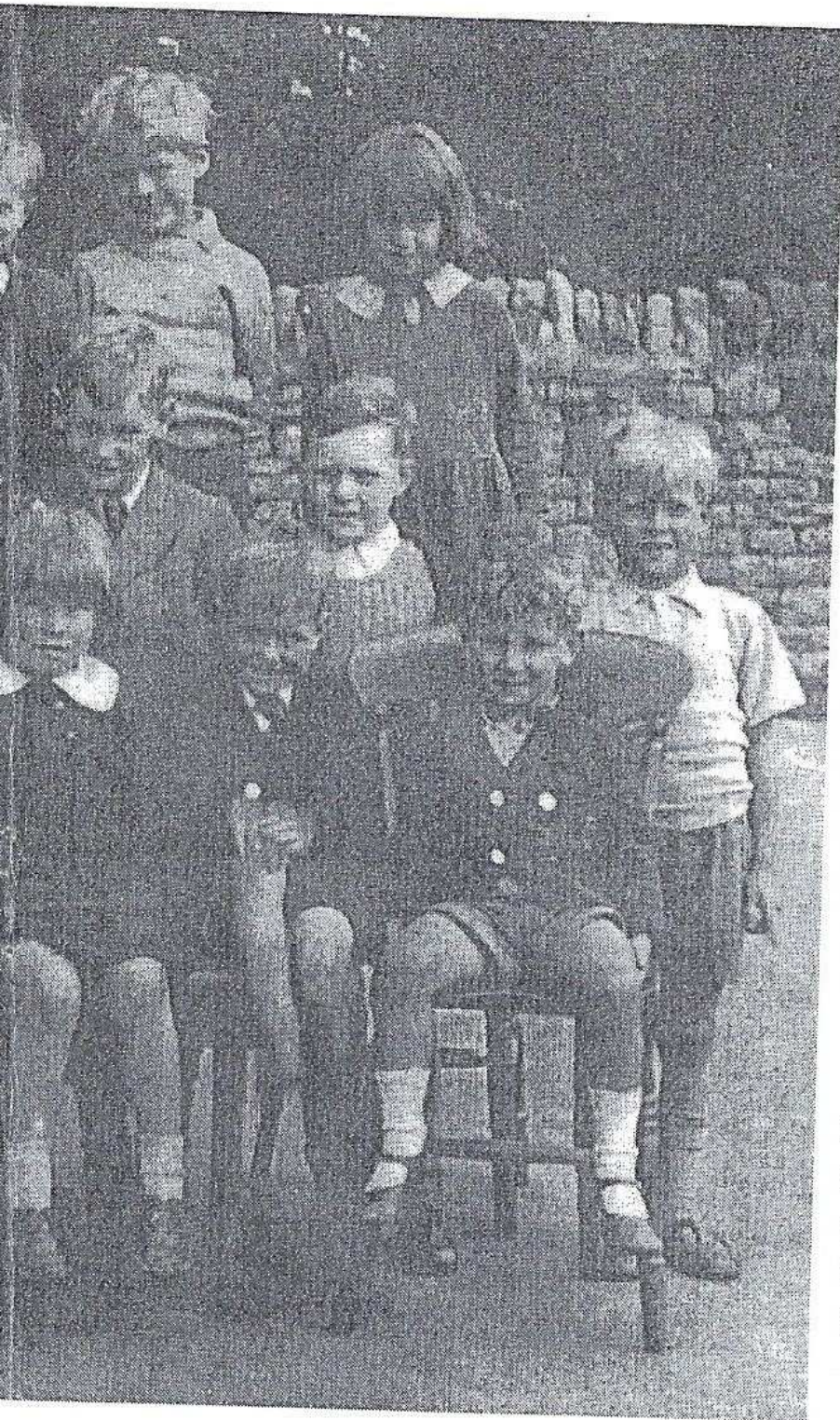

C.I.T.B. NDA OCN

Decorative Paint Finishes and Paperhanging a Speciality

DESIGN & PRINT

Leaflets. Stationery.
 Brochures.
*Designed, Printed
 and Delivered*

Tel: 01295 780234



Sibford Gower School Infants
Class 1939 (4-8 yrs)

Back Row L - R

Mrs. Tarver, Steven Nodon,
Eddie Brown, Doreen Stevens,
Bruce Horne, Tommy Harvey,
Lennard Spicer, Helen Nodon.

Middle Row L-R

Donald Haynes, Eve Bodfish,
John Davis, Peter Stowe, Peter
Hoddenot, Pamela (Whitehead?)
Walter Davis, David Dyer, Billy
Barton.

Front Row L-R

Michael Canning, Peter Haynes,
Jean Stewart, Ruth Tanner,
Peggy Jeffries, Cynthia Wool-
grove, Sydney Haynes, Derek
Bodfish.

Many parents will receive the
new Primary School class photos
shortly and this shows the value
of writing down the names at the
time. Will you remember all the
class in 65 years time?

FRANCIS MORDAUNT
MSSch, MBChA
VISITING CHIROPODIST
To enquire about a Home Visit,
please telephone;
01295 730615
Professional Foot Care
In Your Own Home

HOMŒOPATH
Sheila Job LCH
Consultations by appointment
Family budget scheme available
For details please telephone
01295 780468

Coffee Morning
 in aid of
 Guide Dogs for the Blind
 Association
 at
 Westerways - Sibford Ferris
 Wednesday 26th October
 10am - 12 noon
 Bring and Buy - Cakes & Jams
 Raffle
 Sale of G.D.B.A.
 Christmas Cards & Gifts
 Clean aluminium foil and used
 stamps gladly received



sarah walker
 FLOWERS

Fresh flowers in Sibford

- ✦ *Gorgeous hand-tied bunches*
- ✦ *Tissue wrapped seasonal blooms*
- ✦ *Weddings - parties - christenings*
- ✦ *Flowers for offices - shops
and restaurants*
- ✦ *Funeral flowers*

Free local delivery

Telephone 788595
 Lavender Cottage, Bonds End Lane,
 Sibford Gower, Banbury OX15 5RT

LIANE NORRIS-ASTON
 A COMPLETE BESPOKE CAKE SERVICE.
 WEDDINGS, CHRISTENINGS,
 BIRTHDAYS!
 TRADITIONAL AND CONTEMPORARY
 PLEASE CONTACT LIANE ON
 01295 780472
 GREYCOTE, COLONEY ROAD,
 SIBFORD GOWER

Oddjob

**CARPENTRY
 PLUMBING
 ELECTRICS
 HEATING INSTALLATION
 KITCHEN & BATHROOM FITTING
 BUILDING WORKS
 SECURITY**

**FOR A COMPREHENSIVE AND RELIABLE
 LOCAL SERVICE
 HUGO SEELY 01295 780355
 FREE NO-OBLIGATION ESTIMATES
 No job too large
 Excellent local references available**

MURALS

Designed and painted by
 professional artist, any size
 any subject. Samples of
 work available.

**For further information
 please call 01295 780234**



Women's
Institute

Sibford W.I.

Outing to Rockingham Castle on Tuesday, 9th August 2005

A virtually full coach left the Village Hall on a beautiful morning and it was a pleasure to have on board friends of members plus eleven from the Friendship Club. We arrived at Rockingham at 12.10pm after negotiating the roundabouts and by-passes around Northampton. Sensibly, the coach was parked in the shade of some trees but some of us were a little disconcerted to be faced with a stiffish climb to the castle gate set between its famous drum towers. A quick comfort stop and a light lunch in the tea room (or a picnic) set us up to tour around the Tudor House behind its Mediaeval ramparts. Very interesting, especially the integral "street", the kitchens and the many family portraits and Rockingham china to be found in the living area. Those fit enough climbed the tower adjacent to the gift shop to view the twenty five miles (and five counties) panorama of the surrounding countryside.

Having viewed the house, most of us set off to explore the gardens and nearby church. The Elephant Hedge was an unusual feature - a long line of yews clipped into weird elephant like shapes. At the gate-house, there was a video -presentation of the -castle's fascinating history. James Saunders-Watson, his wife and three children live at the castle giving it a homely feel. Through the windows, we caught glimpses of them enjoying tea under parasols in their private garden. The gluttons amongst us finished the day with a delightful cream tea and by 5pm we were all back on the coach and returned home via Welsh Lane and some pretty countryside. A very enjoyable day out. Gaynor

Outing to the Gardens of Highgrove on Tuesday, 30th August 2005

After being on a waiting list for three years, twenty five lucky members and friends set off by coach to visit Highgrove. Although leaving as early as 8.30am, it was obvious that the weather was going to be very hot so we were glad that our tour was scheduled for 10.30am. We were comfortably transported by Martin -(of Martins of Tysoe) who timed our arrival -precisely. At the entrance gate, we were met by two friendly policemen. One boarded the coach and checked our identities whilst the other searched underneath. At the Orchard House we were warmly welcomed and introduced to our -charming lady guide, Mrs Timothy Barker. The tour took two hours and she led us at a leisurely pace, patiently answering our many questions. Highgrove Garden is actually made up of many different gardens, contrasting, imaginative and unique. When Prince Charles acquired Highgrove twenty five years ago, the house was surrounded by uninteresting parkland. This blank canvas appealed to His Royal Highness as it gave him the opportunity of fulfilling his dreams and ideas. This he has gradually achieved with the greatest of success. His love of statues, topiary, water features and huge terracotta pots is evident. Particularly admired were two gigantic olive jars at the entrance to the Thyme Walk. Friends of Prince Charles willingly helped him put his designs into effect. Rosemary Verey's cottage garden was looking at its best at this time of the year as was the Stumpery with its dramatic arrangement of tree roots which make excellent hosts for the growing of a huge variety of ferns, hostas and the most enormous gunnera ever seen. Very different was the Carpet Garden, our last one to view. Inspired

by a Turkish carpet in the house, the geometric shapes and colours were translated into a walled garden using beautiful ceramics and plants of Eastern origin. Tea and Duchy biscuits awaited us in the Orchard Room where round tables were set with beautiful cream and green table cloths and matching china. Time then to purchase souvenirs of books, china, preserves or a-plant or two from the shop. On the way home, we stopped at The Thames Head pub and everyone agreed that we had experienced a magical day.

W.I. NEWS

Sixteen members and three visitors were welcomed to the September Meeting. Gaynor acted as Secretary as Lynda was on holiday.

Glennis reported on the Literary Lunch held at Osney-Mead, Oxford on a very hot day. Four members travelled to Water Eaton Park & Ride, with Jane driving, and were transferred by coach to the Kings Centre. Veronica Stallwood and Colin Dexter were the two very good speakers. Guests were offered Bucks Fizz on arrival and served an excellent lunch, with wine or fruit juice. Voted very enjoyable.

The Group Meeting at Shutford on 29th October was discussed. Numerous members would like to go, if there is sufficient room.

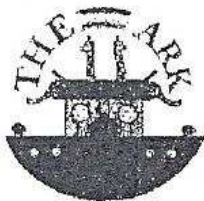
Glennis recalled our two successful Summer outings, first to Rockingham Castle and then to Highgrove, both blessed with perfect weather.

When the business was finished, we were entertained by a fascinating talk on European and American folk art, delivered very professionally by Carole Richardson, with photographs of a high standard and examples of various types of work from Germany, Switzerland, Scandinavia, The Netherlands, Russia and America ranging from simple geometric decoration to -elaborate Rococo on furniture and boxes. Examples were passed around including copies produced by Carole herself and then she surprised everyone by demonstrating the "comma technique" of flower painting using a brush loaded with two colours of paint and producing a charming flower painting in five minutes. Carole assured members that this was a skill anyone could learn, her own interest having been fired when she was on a course on Folk Art in a competition.

Greta thanked our speaker for a wonderfully entertaining talk. The competition for-a hand-painted item was won by Glennis, second Jean and third Miriam. Gwen won the raffle and Jane and Rosemary served tea with apricot loaf and bakewell tarts.

Next Meeting - Tuesday, 11th October. Speaker - Lindsay Fairgrieve on "A Year in China". Competition - "A Souvenir of China" Gaynor

Children's Day Nursery, Epwell



- Full day care for children 2½ to 5 years
- Full and part time places
- Open Monday to Friday 9.00am - 4.00pm.
- Excellent Ofsted Report

The nursery provides excellent opportunities for children to explore and learn at their own pace under the guidance of trained, experienced and caring staff.

For further information ring Julia
Tel: (01295) 780580

Bed & Breakfast

AGDON FARM

Nr Brailes

Comfortable rooms

in old stone farmhouse

Tel: Maggie Cripps

01608 685226

WELCOME TO SIBFORD

If you are a new resident of Sibford and have not yet received a copy of the "Welcome to Sibford" booklet, please telephone Pauleen Inns on 780702 (Gower or Burdrop) or Ann Bishop on 788188 (Ferris), and a copy will be delivered to you. The information will help to make you feel at home - by acquainting you with the services, schools, clubs and societies that are currently active in the villages.

This month we welcome the Jennings family, who have recently moved to 5, Walford Road in the Ferris Manor development. Caroline and Simon have moved here indirectly from Over Norton, their work having taken them to London and Brazil in between!

Their daughters are Issy and Ellie, and Ellie is a pupil at the Friends School.

Rachel and Clayton Berger moved into Hadlands, Bonds End Lane, at the beginning of September after returning from Australia. They have 2 children Max and Francesca. Clayton is a painter and decorator and Rachel works from home.

The Gate Hangs High Inn

Hook Norton

Oxfordshire OX15 5DF

Tel: 01608 - 737387 Fax: 01608 - 737870

*Home Cooked Food daily Lunchtimes & Evenings
Traditional Sunday Lunches*

*Hook Norton Real Ales Courtyard Garden
Car Park Accommodation Available*

Proprietors: Stephen & Karen Coots-Williams

Re - Upholstery

Antique & Modern

Dining Chairs Easy Chairs Arm Chairs
Three Piece suites Etc.

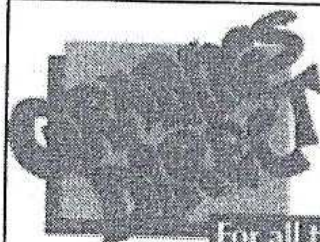
Furniture Repair

20 Years Experience

Free Estimates

B. WEBBER

0790 6248801



The Firs, Hook Norton, Banbury. OX15 5DD

Email: graphicsdirect@aol.com

Phone: 01608 730555 Fax: 01608 730271

For all types of Vinyl Graphics & Signage

Theresa Jack

DESIGNING PRODUCING & FITTING

TREES

WE'RE THERE FOR TREE CARE

All aspects of tree care undertaken
Specialising in reduction/removal of
trees in confined spaces

Supplier of logs & chippings
Over 20 years experience
Fully Insured

For a free quote and a chat please
contact:

Arthur White (The Tree Chap) 01295 788549

HAVE YOU OR SOME ONE YOU KNOW BEEN HELPED BY THE HOSPICE?
Peter and Margaret Whittle invite you to the 2005 Annual Sale (our 13th) of

Cottage Crafts

FRIDAY/SATURDAY/SUNDAY

OCTOBER 28th/29th/30th

MALCOLM'S COTTAGE TADMARTON

10am - 5pm

Light Lunches available 12 - 2pm **ADMISSION £2 INCLUDING REFRESHMENTS**
in aid of

THE KATHARINE HOUSE HOSPICE, ADDERBURY

PETER & MARGARET'S crafts this year include:

traditional & wooden toys for children & adults, creaturesaurus & Micasso/patchwork galore. over 1000 jams & chutneys using locally grown produce, coal clutchers/clambering cats/fudge nativity scenes/ Amish cushions/cards/ hand warmers expanding toast racks/fridge hats and a C.D. of stories written & read by Margaret
There will also be Heyland & Whittle handmade soaps as well as their candles

BRING & BUY CAKE STALL

parking well signposted

David Randall

Fully InsuredEst. 1989


TREE WORK SPECIALIST

● Tree Work All Types <i>Crown Thinning Reduction Pruning / Re Shaping</i>	● Hedges <i>Reduced / Trimmed</i>
● Stump Grinding Service <i>Minimum ground Disturbance</i>	● Wood Chip Mulch <i>Supplied</i>
	● Garden Fencing All Types <i>Supplied & Erected</i>

Free Quotes & Friendly Advice

01608 738109 / 07831 571176

22 The Glebe, Hook Norton OX15 5LD



**FOLLY FARM
BACK PAIN CLINIC**

ACHES & PAINS?

I can help you!

Just visit the new clinic near
SWALCLIFFE

Contact - John McArthur
DC, BSc (Chiropractic)
McTimoney-Corley Practitioner

TEL: **077 40404 678**

OR: **01295 788774**

'FLU JABS

Patients of Sibford Surgery who are over 65 years of age or suffer from certain conditions (e.g. diabetes, angina, chronic heart disease, chronic kidney disease or asthma treated with steroids) are reminded that vaccination against influenza is recommended and is available free of charge. Please telephone the Surgery for an appointment.

01295 780213

If you have any queries about the "flu jab" please pop in to the Surgery and pick up a leaflet, or contact any of our Practice Staff who will be happy to help you.

For further information about the Surgery, including opening times, surgery times, repeat prescriptions, staff and services available, please see our website:-

www.sibfordsurgery.co.uk

The Firs Garage

a world apart from the rest

HOOK NORTON OXON

(1 mile north of village)

01608 737349 / 01608737641



Sales Open : Mon - Fri 8am - 6pm, Sat 8am - 5pm, Sun closed
(out of hours please phone for an appointment)

Parts Open : Mon - Fri 8am - 5.30pm, sat 8.30am 12.30pm

WE OFFER YOU

- * Sales (New & Used)
- * 3 year unlimited mileage warranty (New)
- * Optional 12 months warranty
- * Part exchange
- * Off Road demos
- * Service
- * MOTs
- * Parts
- * Body work
- * Insurance estimates
- * Attendant service (Fuel)
- * Car wash
- * Friendly service & lots more!

ESTABLISHED 1960

IT PAYS TO DEAL WITH A FAMILY BUSINESS

*The Firs Garage would like to thank the local community for their support
it is much appreciated*

Sibford Gower Parish Council Meeting - 2nd September 2005

The Parish Council met on 2nd September 2005 at Sibford Gower Endowed Primary School. In addition to the five Parish Councillors and the Clerk, four local residents were in attendance. The previous Meeting's minutes were approved and there were no matters arising. The Clerk drew the Meeting's attention to a Parish Action Plan which would involve all sections of the Community. Cllr Martin Layer undertook to prepare a notice giving full details for the next issue of the Sibford Scene to establish whether it may generate interest. Charter Community Housing has looked into installing a light for the steps between High Meadow and Pound Lane and things look promising. The Council had considered three planning reports since the previous Meeting. The Clerk reported on a recent tour of the Parish by Mr Steve Bowden, Deputy Area Engineer, Oxfordshire CC, visiting all the areas where remedial work is required. Undertakings were given but not yet fulfilled. With regard to footpath matters, the Council expressed appreciation of clearance work either carried out or promised by the owners of adjacent -hedges. As to finance, the Clerk presented the externally audited accounts for the year ended 31st March 2005. There was one criticism by the Auditors and it concerned the donation of £50 towards the retirement gift for the previous Head Teacher of Sibford Gower Endowed Primary School. It had been thought appropriate in view of his time at the school and the regard in which he was held by the local community. The Auditors advised that the payment was ultra vires being outside the Parish -Council's powers. However, apart from that, the accounts were considered to be in order. They were duly approved and accepted by the Councillors. On the agenda was the Village Pond. The Clerk reported that a very detailed survey had been carried out by Pond Conservation, Oxford and a report for consideration by the Council is awaited. The acquisition of land to extend burial availability continues to move ahead and a working party with members from Sibford -Ferris PC, Sibford Gower PC and Holy Trinity Church PCC is to be set up so that progress may be made as quickly as possible. Reference was made as to whether street lighting in High Meadow might be possible particularly with the safety of the more elderly residents in mind. Discussions with Oxfordshire County Council are ongoing. Mr A Mullis, a resident in High Meadow and who was at the Meeting, said that he was speaking for residents in support of their desire to see perhaps just three lights installed at strategic points. A resident living in Acre Ditch spoke of his concern at the rebuilding of Wheathills barn and -asked whether building permission had been granted by Cherwell District Council. The Chairman advised that no application had been seen by the Parish Council and the Clerk was instructed to make appropriate enquiries. The next Meeting was arranged for Friday, 11th November 2005 to be held in the same venue. The Chairman thanked all those present for attending and closed the Meeting at 9.30pm.

HOLY TRINITY CHURCH NEWS

The Annual Church Fete held on Saturday 30th July was a resounding success, thanks to dedicated work by the many stallholders/games organizers/tea providers and huge support from the village and numerous people from farther afield. Many thanks to you all for your generosity of time, gifts, donations and spending. Despite rain starting to fall just before we opened, it soon cleared and the outdoor occupations were able to return into some sunshine. The financial reward was also great with an all-time high of £1,255.12 collected for church funds.

The Harvest Festival Service on September 11th well represented the bounty of the harvest and was well attended, including many from the Methodist Church. The large number of children present was also fortuitous as the Rector dedicated and officially opened the Children's Corner, now beautifully finished. The children took a major part in the service and most of the congregation moved to the Village Hall for a most happy *bring and share* lunch.

Another happy occasion took place the previous day with the marriage of James Wimbush and Amanda Gardner. Considerable rain on the day was unfortunate but in no way dampened the spirit of the occasion and the guests were entertained to a magnificent lunch afterwards in the Village Hall, prepared very expertly by various skilful villagers.

SIBFORD SALON OF BEAUTY

01295 788463

Botox - Red vein removal - Hydradermie

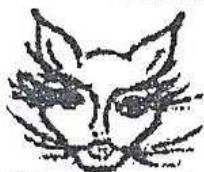
Oxygen facials - Calgel nails

Indian head massage - loads more

Regular offers - Gift Vouchers

www.sibfordsalon.co.uk

New clients 10% discount with advert



Your garden could
reflect your style..

Cathy Wallwork



Garden Design

Creative, sensitive garden designs

Beautiful planting schemes &

Professional planting & landscaping

Tel: 01608 685 314

..with help from an
experienced designer

Church Services

Society of Friends

Sunday at 10.30 am

Methodist

Sunday at 11.00 am

Roman Catholic Mass

Wroxton

Sunday at 9.00 am

Brailes

Sunday at 11.30 am

Baptist

Hook Norton

Sunday at 10.30 am

Church of the Firstborn (Bridleways S.Gower) Sunday at 10.30 am

Church of England, Holy Trinity, Sibford Gower.

October

Sun 2nd Benefice Eucharist at Broughton 10.30

Sun 9th Family service 10.00

Sun 16th Holy Communion 9.30

Sun 23rd Holy Communion 9.30

Sun 30th Matins and Holy Communion 9.30

November

Wed 2nd Holy Communion and requiem

Sun 6th Benefice service at Tadmarton 10.30

**FARMHOUSE
BED AND BREAKFAST
GRANGE FARM
SWALCLIFFE**

*Enjoy warm hospitality & peaceful
surroundings in our comfortable 18th C
Farmhouse*

**CONTACT: BARBARA TAYLOR
TEL. 01295 780206**

**THE VILLAGE SHOP
HOOK NORTON**

NATIONAL LOTTERY

Grocery - Greengrocery - Bakery

Wines - Spirits - Confectionary

Newspapers - Magazines - Cards

Video Rental - Bottled Gas

Open Monday to Friday

7 am to 8 pm

Saturday 8 am to 8 pm

Sunday 8 am to 6 pm

Telephone: 01608 737245



RED HORSE VALE LTD

All Types of Fuel, Coal, Smokeless, Gas,

Logs, Kindling, Barbecue Needs

Central Heating Oil, Oil Tanks & Coal Bunkers

Landscape & Building Materials, Garden Centre

& Garden Supplies. Farm & Country Sundries

Equestrian Products, Horse & Pet Feeds

Open: Monday - Saturday 8am - 5pm

Windmill Farm, Banbury Road (A422),

Oxhill, Warwickshire CV35 ORL

Tel: 01926642832

Fax: 01926 642 853

*Reflexology
Remedial Massage*

Elizabeth Webber

MAR.LCSP (Phys)

13 years experience

Godswell Natural Therapy Centre

Bloxham, Banbury

Tel: 01295 - 788101

Sibford Bus Services

Free Bus Service

To Banbury Thu October 6 & 20 Departs 10 am
 To Chipping Norton Wed October 12 & 26 Returns 12 noon
 Pick up points are; The Colony, High Meadow, Cross Roads, Village Hall.

Cherwell Rural Dial-A-Ride Scheme

A mini bus with tail-lift to take **elderly or disabled people** and escort to Banbury (max fare £1.60) Door-to-Door service. Book at least one day in advance. Operates on Wednesdays & Thursdays. Phone 263777 for details. BCTA also takes bookings for groups of 8 or more on a weekly/monthly basis (Wednesdays & Thursdays) to and from Banbury. Tel; 263777

BUS 480 - Times from 5th June 2005 - Mondays to Saturdays

From Banbury towards Shipston

Banbury Bus Station dep.	09.00	11.00	12.30	13.30	15.30	17.10	18.10
SIBFORD GOWER School	09.25	11.25	12.55	13.55	15.55	17.35	18.35
Shipston, Tilemans Lane	09.47	11.47	13.17	14.17	16.17	17.57	18.57

From Shipston towards Banbury

	NS		S	NS				
Shipston, Tilemans Lane	06.50	07.45	08.50	09.50	11.50	13.20	17.10
SIBFORD GOWER School	07.12	08.07	09.12	09.12	10.12	12.12	13.42	17.32
Banbury Bus Station	07.37	08.35	09.37	09.37	10.37	12.37	14.07	17.57

Buses serve Sibford Ferris two minutes before the times shown at Sibford Gower towards Shipston and two minutes after the time shown at Sibford Gower towards Banbury.

Notes: S = Saturdays only, NS = Not Saturdays.

Most journeys, where possible, will operate low floor wheelchair accessible vehicles.

Sorry, No services on Sundays or Public Holidays

For complete times at all of the intermediate places that are served by 480 please see new timetables available from bus drivers and in the Village Shop.

The Fare structure has changed: Adult Fare £1.70 each way Child (5-16yrs) £0.85

Family ticket (2 Adults = up to 3 children) £5.00 . Monthly ticket £55.00

Calendar of Events

October

Sun 2nd Village Hall Market

Tue 4th Friendship Club 'Life as a Teacher' Village Hall 2.00pm p5

Wed 5th Mobile Library in Sibfords and Burdrop (2.40 - 4.25pm)

Tue 11th WI 'A Year in China' p16

Wed 12th Horticultural Society AGM and 'Trees' Village Hall 8pm p10

Sat 15th Jumble Sale in aid of Katharine House Hospice V.Hall 2pm p9

Tue 18th Friendship Club lunch at Lyneham Golf Club p5

Tue 18th Terry Waite at Sibford School 7.30pm p11

Wed 19th Mobile Library in Sibfords and Burdrop (2.40 - 4.25pm)

Thu 20th Sibfords Society 'Dads Other Army' Village Hall 8pm p7

Sat 22nd Heart of England Jazz Band. Village Hall 7.30pm p4

Sat 22nd Acoustic Triangle at St. Mary's, Banbury 7.45pm p8

Wed 26th Guide Dogs Coffee Morning, Westerways, S.Ferris 10-12 p14

28/29/30th Cottage Crafts, Malcolm's Cottage, Tadmarton p18

November (part)

Tue 1st Friendship Club Village Hall 2.00pm p5

Wed 2nd Mobile Library in Sibfords and Burdrop (2.40 - 4.25pm)

Wed 2nd Ferris Parish Council 7.45pm upstairs in the Sports Hall, Sibford School

Fri 11th Gower Parish Council Meeting, Primary School p20

Wed 16th Mobile Library in Sibfords and Burdrop (2.40 - 4.25pm)

Wed 30th Mobile Library in Sibfords and Burdrop (2.40 - 4.25pm)

Cover picture - The Manor, Sibford Ferris viewed from the Gower 1942

Sibford Scene

Editor; Adrian Lamb. Grounds Farm, Sibford Ferris. 780380

e-mail adrian.lamb@care4free.net

Treasurer; Timothy Wimbush, The Rectory, Acre Ditch, S.Gower
780555

Advertising; Ivor Hopkyns, Elmridge Farmhouse, Sibford Gower,
Banbury, Oxon. OX15 5RT. Tel 788367