



April
2005

SIBFORD SCENE

No. 272

Sibford Village Hall Extraordinary General Meeting
Thursday 31st March 8.00 pm in the Village Hall

SIBFORD FERRIS LITTER BLITZ

Saturday 2nd April
Meet 10.00 am at Lanes End Corner

SIBFORD GOWER LITTER BLITZ

Saturday, 9th April 2005
Meet 10.00 am at the Village Hall

SIBFORD FERRIS ANNUAL PARISH MEETING

Wednesday 27th April 7.45 pm
upstairs in Sibford School Sports Hall

SIBFORD GOWER ANNUAL PARISH MEETING

Wednesday 4th May 7.30 pm
Primary School Hall

Nature Notes

Feb. 28th. From our window I watched a male muntjac which had a very pointed backward curving horns and prominent tusks. It was eating cyclamen leaves and then surprisingly changed to yew which it ate with some relish. I thought yew leaves were poisonous but perhaps that is only to horses.

Mar. 1st. Last night my daughter heard a disturbance in the poultry house and when she got there could only see a tail sticking out so she grabbed it heaving out a badger which she threw across the lawn to avoid being bitten. Sadly it had already damaged two of the chickens badly and one has since died. It takes a strong hen coop to keep out badgers.

Mar. 11th Two buzzards were working their way up the valley behind Burdrop when one suddenly dropped like a stone. I thought it might reappear with a rabbit but after a minute or two it rose again without anything. My granddaughter said that she was buzzed by a buzzard this morning, but I wonder whether it only saw her as it came over the hedge and rose sharply over her head.

Mar. 15th It has been a remarkably dry year so far. I have measured less than 2 inches of rain which is about 1/3 of average. After three weeks of cold weather with frost most nights, some quite hard, it is milder today.



TSUNAMIA APPEAL

A very big 'thank you' to all who supported our Coffee Morning and Lunch. We raised £229 towards the appeal. This money will go to the Scout Association Special Tsunamia appeal which, unlike many others, is still open.

Sibford Cricket Club
Indoor Cricket Nets
29 & 31 March, 5, 7, 12 & 14 April at 7.00pm
At Sibford School Sports Hall.
New players most welcome

SIBFORD FERRIS LITTER BLITZ

The Annual litter blitz in the Ferris will take place on

Saturday 2nd April

meeting at Lanes End at 10.00 am. Volunteers most welcome!
Equipment will be provided. If you would like to take part, but cannot make that day or time, please contact Arnold Lamb on 780357 to make alternative arrangements.

SIBFORD GOWER LITTER BLITZ

The Annual Litterblitz in the Gower will take place on

Saturday, 9th April 2005

Volunteers are sought to give an hour or so of their time to help with the work of clearing litter from where it may have gathered in Burdrop and Sibford Gower.

We will meet at Sibford Village hall at 10am when Robin Spicer will allocate the areas which require attention.

The Parish Council hopes that the occasion will receive enthusiastic support and looks forward to seeing you on the 9th of April.



Ann Woolgrove
FABRICS, CURTAINS & SOFT FURNISHINGS

Handsewn & interlined curtains & pelmets our speciality
Roman & Roller blinds
Customised design service and home consultancy
Every kind of fabric from many leading manufacturers
Decorative Poles, Tie backs & Trimmings

<i>Loose Covers and Cushions</i>	<i>Lampshade making</i>
<i>Wallpapers & Interior Decoration</i>	<i>Custom made Bedspreads & Headboards</i>

Tel/Fax: 01295 788145



Oddjob

**CARPENTRY
PLUMBING
ELECTRICS
HEATING INSTALLATION
KITCHEN & BATHROOM FITTING
BUILDING WORKS
SECURITY**

**FOR A COMPREHENSIVE AND RELIABLE
LOCAL SERVICE
HUGO SEELY 01295 780355
FREE NO-OBLIGATION ESTIMATES
No job too large
Excellent local references available**



Become a Friend of the Simon Weatherby Garden

It was just over 10 years ago that the garden for the Katharine House hospice was designed, built & stocked by our Trust; paid for entirely from donations.

We have maintained the gardens ever since at no charge to the Hospice. Although all our gardeners are volunteers, we have expenses to meet each year, equipment to run and maintain, plants need replacing and tools don't last for ever. Then there are a myriad of sundries constantly needing replacing; ponds, pumps & even fish.

The garden is a constant joy to the people who come to the Hospice for convalescence and care, and in order to continue our good work we need your support!

By making a small regular donation you can ensure that this garden lives on, not just in Simon's memory, but for the dozens of people for whom this is a place of comfort in their time of need.

We invite you to become a friend of the Simon Weatherby Garden at Katharine House Hospice, and make a regular donation by covenant or Gift Aid. For more details of the Friends scheme please contact Helen Lamb (Head Gardener) on 780380

Advance Notice - Garden Open Day Sunday June 5th

Sibford Stores & Post Office

Sibford Ferris

OX15 5RG

Tel: 01295 788317 / 788348

Your Local Convenience Store

Your local newsagent, we deliver newspapers and magazines 7 days a week to all the surrounding area, always a wide selection of newspapers and magazines available in the shop. Place your regular order today

Bread, cakes and savouries baked on the premises throughout the day.

We are your local National Lottery Agent

Photocopying, fax and mailing service available on the premises.

Agents for Dry Cleaning and Laundry.

Chilled & frozen foods, groceries, cigarettes, beers, wines and spirits, fresh fruit & vegetables, pet foods, medical and toiletries and lots, lots more.....

Telephone your grocery order for free local delivery 7 days a week.

OPENING HOURS

Monday to Saturday 5.30am to 6.00pm

Sunday 5.30am to 1.00pm



Sibford Horticultural Society

It was good to see so many people turn out for our first meeting of the year when John Cornwall talked to us about the Glories of the Gar-

den. It became very clear that he was a very good photographer with a good eye for different textures and colours. The many slides that he showed gave good examples of garden flowers and how they looked in all weathers and situations.

The next meeting will be in the Village Hall on **Wednesday April 13th** at 8.00 pm when Sue Bedwell will be talking to us about 'Making the most of your garden'. All are welcome to attend.

A reminder to get your second early or maincrop potatoes planted for the 'Plant a Potato' section of the show.

Put one potato in a 9" pot. Water, feed etc. Bring it to the show. The heaviest crop of potatoes wins - Simple!!

Advance Notice - **Saturday 21st May** 10.30-12 noon - Plant Sale at Gowers Close.



The Bishop Blaize Inn

17th Century Freehouse

Burdrop, Sibford Gower

Tel. (01295) 780323

Sam and Sheila welcome you

Senior Citizens Special

15% **OFF** all meals on our main menu board

Monday - Friday Lunch

(For persons 65 and over)

Dont forget - Monday night is take-out night

Fish or double jumbo sausage and chips

NOW includes ALL meals from our childrens menu

Traditional Sunday Lunch

12noon til 2pm

Bookings Advisable

NO food will be served Sunday evenings



This term has seen much activity at Playgroup on the theme of recycling. The children have been learning about the different uses of materials and making many crafts from them - including litter bins!

At the end of term we will say goodbye to the following children as they go off to school; Jamie Lamb, Isabelle Cook, Harry and Sam Prickett, Kit Field, Toby Lovick and Ashley Clarke. We wish them all the best.

We reopen on Monday 18th April after the Easter holidays. If you would like more information about Playgroup please ring 780998 during Playgroup hours (mornings)

ROAD CLOSURE BETWEEN THE SIBFORDS - SUSPENSION OF 480 BUS SERVICE TO AND FROM THE FERRIS

While the road between the Sibfords is closed for repairs during April, the 480 bus will be unable to service Sibford Ferris and passengers will have to use the Burdrop Corner stop (see time-table for times). The bus companies have been advised by the Highways Department at Oxfordshire County Council that the closure will be from 4th to 8th April. OCC has informally advised that the closure will probably not be for the whole week, but it is probably safest to assume that the suspension of the Ferris 480 bus service will be for the whole period. If you have any queries, you can telephone Cheney Coaches on 254254 or Geoff Amos on 01327 260522. If you need a time-table, they are available from the bus-drivers or from the village shop.

The Gate Hangs High Inn

Hook Norton

Oxfordshire OX15 5DF

Tel: 01608 - 737387 Fax: 01608 - 737870

Home Cooked Food daily Lunchtimes & Evenings

Traditional Sunday Lunches

Hook Norton Real Ales Courtyard Garden

Car Park Accommodation Available

Proprietors: Stephen & Karen Coots-Williams

Contributions for the
May
Sibford Scene
to the Shop or Editor
by
April 19th



20 Walkers, led by Robin Spicer, set off from Woodway Barn on a cold Saturday morning early in March. The overnight frost was just melting the top surface making it quite slippery. As we crossed over the valley to the Gower and cut up to Ditch Hedge Lane the 'mud factor' really impacted but, fortunately everyone remained upright and no boots were lost. After a couple of hours we returned to the barn and enjoyed hot soup and crusty French bread. The generosity of our walkers and their supporters enabled us to send a donation of £64 to Katharine House Hospice. Sincere thanks to all concerned.

At our AGM in March thanks were given to Gaynor Harper-Tarr and Bernard Keen, our retiring committee members. Kay Harries and John Marshall were elected to join the committee for the coming year. The new programme was introduced and members were reminded that subscriptions are now due. New members are always welcome.

Following the meeting, the churchyard working party reported on their work during the year. They have been identifying and recording all the headstones in the churchyard. This is now documented and the next task is to prepare an index and grid map reference so that visitors will be able to identify more easily where family members are buried.



Our next meeting is on **Thursday 21 April** at 8pm in the Village Hall when Mr J Steele will talk and give a demonstration on Chair Making - all are welcome to see him make a Windsor- type chair from a tree!.



LOGS

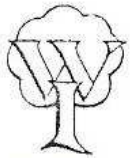


TOP QUALITY, SPLIT, SEASONED
HARDWOOD LOGS
BULK OR BAGS

DAVID RANDALL TREE WORK
01608 738109 / 07831 571176

Re - Upholstery

Antique & Modern
Dining Chairs Easy Chairs Arm Chairs
Three Piece suites Etc.
Furniture Repair
20 Years Experience
Free Estimates
B. WEBBER
01295 269362



W.I. News

**Women's
Institute**

At our Meeting on the 8th March, six apologies were received but numbers were helped by the welcome presence of three guests from Tadmarton W.I. With Lynda still away, Gaynor once again took over the secretary's job. It was with sadness that the President, Glennis, announced the death of two previous Members, Margaret Baker and Sheila Walsh. She also read out letters received from Lynda, Mary and Brenda. We envied Lynda's description of life in the Florida sunshine. Mary expressed thanks for the card and tulips sent to her following her operation and Brenda invited Members to visit her in Stratford upon Avon at a date to be arranged. On the display table was a copy of the 2004 Diary of Events compiled by Mary. The original had been submitted to Head Office. Oxfordshire Federation celebrated its 85th birthday last year and had requested that each W.I. in Oxfordshire submit a record of activities condensed onto two pages of A4 paper. These will be on show at the AGM in Oxford Town Hall on 22nd March. Our Programme Secretary, Jane, gave us a run down of the varied and interesting speakers she has arranged for the coming W.I. year.

Members then settled down to be richly entertained by Jeanette and Peter Cook with their brilliant and professionally delivered renderings of their extensive repertoire of light hearted monologues. Peter's interpretation of the Stanley Holloway monologue "My word, you do look queer" caused much hilarity. Mr & Mrs Cook treated us to forty five minutes of sheer joy and they received well deserved thanks from Rosalind.

It was then the turn of Members to entertain! The competition for an amusing short poem attracted an excellent response and the writers were invited to read out their compositions. Our guest speakers were so impressed with the talent that they asked if they could keep the poems to add to their own collection. Judging was extremely difficult but after much deliberation they awarded Gaynor first, Margaret second and Rosalind third. Pat provided the raffle prize of a golden

primula which was won by Glennis. Jane and Jean served teas and homemade tempting cakes.

♣♣♣♣♣♣♣♣♣♣

Aromatherapy, Swedish Massage
Indian Head Massage, Reiki,
A Holistic attitude to health.

Virginia Bennett RGN 01295780373



Tuesday, 12th April, will be our AGM and there will be a bring-and-buy stall manned by Gaynor and Kathleen (Winter).

Friendship Club

We had a very short talk from Ena Bowley on 'Life living in the Town Hall'. Evidently she lived in a house attached to the Town Hall, her grandfather was the Mace Bearer and she and her parents looked after the Town Hall and prepared it for all the functions which were held there, both civic and social. The house where she lived plus three shops, a tobacconist, jeweller and my favourite 'Rocky' Leech's sweet shop eventually became the Nat West Bank. The afternoon ended with tea and cakes which were provided and served by Val and Ann, and the usual raffle.

Tuesday 29th March. We have our Easter Tea which this year is being provided by the members (excluding the committee) and is being organised by Phyllis. Time 2.00 pm to sit down at 2.30 in the Village Hall.

Tuesday 5th April Meet in the Village Hall at 2.00 pm.

Tuesday 26th April. An outing is being arranged.

Tuesday 3rd May. A.G.M. in the Village Hall at 2.00 pm when subs for the following year will be collected.

(Appologies for failling to print the Friendship Club article in the March Scene - ed)



BUILDING PLANS
BUILDING REGS. SUBMISSIONS
NEW BUILD EXTENSIONS ALTERATIONS

D.R. BOVILL, B.A.
PLANNING & DESIGN CONSULTANT

PRIVATE AND TRADE ENQUIRIES - PLEASE CALL
01295 780609 OR 07890 591783

Family Bingo
at Tadmarton Village Hall.
Doors open 6.45 - Eyes Down 7 pm
8th April, 20th May,
1st July, 12th August
No entrance fee. 50p a book with
prizes for 'a line' and 'House'
There will be a raffle and Tea/Coffee
during the interval.
If transport is a problem contact;
Eileen Steele 788593 or
Barbara Wright 780402

Sibford Ferris Parish Council Meeting, 10th January 2005

The meeting was attended by all councillors, three members of the public and Mr Simon Marsden of the Highways Department. Mr Marsden was present to discuss solutions to the **drainage** problem along Main Street where drains are either inadequate or broken and will require major refurbishment. The councillors were shown a new system involving kerbing with drainage holes. The kerbing would also prevent bank erosion, which has become a problem in several places, but particularly near to the Shop. In a rural setting, however, it was felt that the drainage holes could quickly become blocked by earth, leaves, etc. It was agreed that the councillors and Highways would produce proposals separately based on a mixture of the new and conventional schemes and would meet to discuss again. Mr Marsden advised that road closure would be inevitable for this work.

Mr Marsden was also asked about the **potholes** on the road near the telephone exchange and he advised that a scheme had been drawn up for repairs to the section from the exchange up to the Elm crossroads and another section from the Elm up towards Banbury, but that there was no finance at present.

The closure of "**Burdrop Hill**" from 4th to 8th April was also discussed and the meeting was advised that the closure would probably only be for two to three days from the middle of the week and that the repairs would probably be confined to the section of road between the last house in the Ferris and the slip road up to the Blaize.

The Clerk advised that twelve completed questionnaires on the **play area** had been received and would like to thank the respondents for their time. The replies will be carefully studied by the Play Area Liaison Group and a scheme proposal for the Cotswold Close area will be put to selected companies shortly with a view to receiving quotations. Facilities for older children are still being investigated.

Speed measuring equipment has been in place on the Hook Norton road, and also, courtesy of Speedwatch, on Mannings Hill. Traffic in Main Street near the Banbury entrance to the village will also be surveyed.

CHIROPRACTOR

John Mulley

DC MCC BAAC

AM Clinic, Banbury: 01295 262100
Bicester Chiropractic Clinic: 01869 321166
Or: 01295 780629

McTimony-Corley

Also treats animals



DAVID MALONE



HIGH CLASS PAINTER AND DECORATOR

Cherington
Warwickshire
CV36 5HP

Tel: (01608) 685908



C.I.T.B. NDA OCN

Decorative Paint Finishes and Paperhanging a Speciality

As reported last month, OCC Highways met with Councillors to discuss the **junction alterations at Lanes End** and have agreed to put a smooth section across the proposed "rumble effect" bell-mouth to permit people with walking difficulties to cross easily. However, there have been further discussions about the bus stop area on the east side of the junction and a new proposal will be put to OCC to construct a raised, kerbed area to protect pedestrians on that corner.

The new fences sub-dividing the **fields adjacent to the Manor development** and the new tree plantings have been checked by CDC as being in accordance with the landscape plans for the development. The councillors found that the fence alongside the new footpath behind the stone wall a little high and enquiries will be made to see if it can be lowered to reduce its impact.

It has been confirmed that two of the **horse chestnut trees** along the Hook Norton road near the School entrance will have to be removed by OCC due to disease. They will have to be replaced by other species and a grant will be applied for from CDC for replacements. The Parish Council accepted with thanks a very kind offer from Mr Bill Crabtree to donate funds for a small-leaved lime for this purpose.

A letter has been received from Banburyshire Community Transport Association to advise that the **Cherwell Villager** service will be withdrawn from the Sibfords at the end of May due to lack of use.

The next meeting will be the **Annual Parish Meeting on Wednesday, 27 April** at 7.45 pm in the top floor room of the Sports Hall, Sibford School. This is an open meeting at which the Chairman/Responsible Financial Officer will make his annual report and villagers will be able to raise issues and ask questions. Councillor George Reynolds will be attending the meeting and will speak and be available to answer questions on District Council matters.

Anita Spencer, Clerk Tel: 788557

STOP PRESS

The Wykham Arms has
re-opened under
new ownership.

More to follow.

Meanwhile come and meet
Ian Wallace and his team to enjoy a
fine meal with good wine or simply a
great pint of Hooky.

Richard Wallington

Builder

Block Paver Drives A Speciality

Also Extensions, Patios

Fencing etc.

High Quality Work, Free Estimates

01295 780705 07743 932545

(Sibford Gower) (Mobile)

SIBFORD CRICKET CLUB AGM REPORT

Dust down your whites another cricket season is about to begin!

The 2005 AGM took place in the usual salubrious surroundings of The Bishop Blaize and was well attended by young and old alike.

Many topics were discussed and a few problems aired and with any luck resolved and I think everybody is looking forward to a good season in both league and friendly matches alike.

Good news came from the Chairman who said a constructive meeting had taken place with The Friends School about our use of the pitch with some good out of season work having taken place to the wicket and the promise of some remedial work to the pavilion in the pipeline.

Kevin Peachey got the go-ahead to take the helm for his second season as captain being ably backed by his vice Jason Barton and Dave Pratt will continue on Sunday (cushty!)

There was talk of people being 'groomed' for the future but I'm not entirely sure it had anything to do with cricket.

A full fixture list was announced with some interesting new opposition even including a touring team from Wales, yes apparently some of them can tear themselves from the rugby pitch for a game of cricket.

The first game is a warm up against Harbury on the 24th of April followed on Sat 30th by the first league game against Gawcott.

There is net practice in April on the 5th, 7th, 12th and 14th (Tuesdays and Thursdays) at the Friends school sports hall at 7 pm everybody is welcome including minor TV and radio personalities (you know who you are) kit of variable quality is supplied. Hope to see some new faces.

Let the season commence.....

The anonymous bowler (well I think of myself as more of an all rounder)

SIBFORD CRICKET CLUB PLAYER PROFILES

1 DAVE PRATT

- ? Nickname/s : Del Boy.
? Cricketing Occupation: Housewives favourite batsman /
Sunday skipper
? Cricketing Style: Laid back (especially when fielding)
? Sponsors: Rothmans, The Racing Post and
Stannah Stair lifts.
? Favourite batting stroke: Forward defensive prod.
? Second favourite stroke: You mean there are other strokes?
? Cricketing Hero: Geoff Boycott.
? Don't mention: Hair dye / Fake tan.
? Most likely to say Cushty my son / You know it
makes sense

DAVE PRATTS FAVOURITES :

- ? Favourite colour: Orange (particularly clothes)
? Favourite TV: Only Fools and Horses.... of course
? Favourite Car: Capri ghia.
? Favourite Film: Goodbye Mr. Chips
? Favourite Band: Englebert Humperdink.
? Favourite Drink: Mild in handled glass (you think
this is made up.)
? Favourite Vice: The Gee Gee's.
? Favourite batting score: The scores not important, just
crease occupation!

THE INTERVIEW:

So Dave is there any useful advice you could give us?

A: Well don't tell anyone I told ya but Doctor Dennis in the 3.40 at
Lingfield is where the smart money is going.

And have you any plans for the future Dave?

A: Well my son this time next year I'm gonna be a millyonair ain't I.
And finally in one sentence Dave could you sum up your outlook on
cricket and perhaps life in general. A motto if you like.

A: E who dares!!

A Page from the Past
A short account of Farming in and around Sibford
in the 1930's by Charles J. Lamb

An account of the farmers, farm buildings and farming of the depression years of the 1930s, and later as observed by C.J. Lamb, who was born in Sibford Gower in 1924 of a wide-spread farming family, most of whom were at that time struggling for a precarious living because of the disastrous agricultural policies of a Society to which industrial export and a need for cheap food for industrial workers was the only consideration.

The parishes of Sibford Gower, with Burdrop and Sibford Ferris, are each roughly triangular in shape, together forming a rectangle with the largest area of the Gower lying to the North of the compass and the Ferris largely to the South. The two parishes are each bounded by the infant River Stour to the South and by a tributary of the Sor Brook to the North, with the parishes of Hook Norton as neighbour to the South and Epwell and Shutford to the North.

Sibford Gower's Western boundary with Brailes, which is also the Oxon Warwickshire County boundary, is formed by a centuries old British road known as Ditchedge, which follows the escarpment from Rollright to Edgehill. Sibford Ferris has as its Eastern boundary with Swalcliffe parts of two small streams running to North and South over the watershed

between Severn and Thames, but drawn largely in a more or less straight line, not dictated by any natural feature. The boundary between the two Sibfords, however, is almost completely formed by a tributary to the River Stour and another to the Sor Brook, separated only by a few hundred yards over the watershed at Tyne Hill.

The configuration of the land extends from 400 ft above sea level at Temple Mill Sibford Ferris to 750 ft at Heath Farm Sibford Gower. Sibford Gower will be described commencing from the River Stour to the South following the long spur of ground to Sibford Heath over the watershed to Blenheim Farm and returning on the shorter spur to Sibford Gower Village.

Approximately 30 acres of land, mainly of limestone, Bunkers Hill, Bunkers Ground, Trai-



sarah walker
FLOWERS

Fresh flowers in Sibford

- ✦ *Gorgeous hand-tied bunches*
- ✦ *Tissue wrapped seasonal blooms*
- ✦ *Weddings - parties - christenings*
- ✦ *Flowers for offices - shops and restaurants*
- ✦ *Funeral flowers*

Free local delivery

Telephone 788505
Lavender Cottage, Bonds End Lane,
Sibford Gower, Banbury OX15 5RT

torsford Meadow and Lady Bell Hangings, was farmed by Will Tustain, a wealthy bachelor grazier of Milcombe, who also owned Hook Norton Leys Farm adjacent across the River Stour. Another 30 acres of pasture opposite the Colony brought this man's local holding to approximately 260 acres, which was run by only one man, George Waterman, who lived in Sibford Gower, walked to and from his work, and by hard work and exposure to the elements was crippled with rheumatism at early middle age and yet continued to carry out his duties.

The standard of farming, of course, was appalling. The land, entirely pasture, was covered with thorn bushes, rushes, thistles, etc., but it was probably one of the few holdings producing more than a bare living. Hook Norton Leys Farm and the Bunkers Hill land had, within the memory of an old friend of mine, Fred K. Dyer, who worked there as a young man, "Been entirely under arable crops except the hangings of the tanks".

College Barn and New Barn together about 100 acres was farmed by Lewis Poulton, Master Builder of Burdrop, where he also farmed the Park and Burdrop and Wheathills Farms. All these farms, predominantly arable and probably well farmed in the more profitable past, had degenerated by the 1930s to growing crops more remarkable for its content of poppies, moon daisies and couch grass than grain. This holding decreased in the 30s when J. Salmon Pettipher purchased College Barn and Lewis Poulton's son, Will, purchased Burdrop Farm.

Haynes Barn Farm was farmed by Joseph Sabin of Temple Mill together with other land near college Barn, approximately 15 acres known as Shaws and Whitemoor.

Ryehill Farm of 50 acres was in the occupation of Walter Davies, who after years of hard work was unfortunately to have to admit defeat just before the outbreak of the 1939 war, which would no doubt have enabled him to continue farming.

Stickleys Farm, approximately 35 acres stretching from Sibford Gower to Ryehill, was owned by my mother, who came of a farming family, the Bishops of Whichford, and farmed by my father, who was hard put to provide a living for his wife and four children from this acreage.

He kept a large number of poultry on the farm, was a member of the Scientific Poultry Breeders Association and produced sex linked Rhode Island Red and Light Sussex chicks for sale, but unfortunately, in company with many others, the then prevalent diseases of fowl paralysis and Bacterial White Diarrhoea, combined with undue competition from other returned service men to defeat this enterprise. He turned his attention then to part time house thatching, which enabled him to survive until the outbreak of war when he was able to increase his holding of land by renting College Barn and Gautherns Farm, Sibford Ferris, from J.S. Pettipher, who was retiring mainly because he hated to see pasture, however worn out, broken up for arable farming.

(To be continued in a future issue)

WELCOME TO SIBFORD

If you are a new resident of Sibford and have not yet received a copy of the "Welcome to Sibford" booklet, please telephone Pauleen Inns on 780702 (Gower or Burdrop) or Ann Bishop on 788188 (ferris), and a copy will be delivered to you. The information will help to make you feel at home - by acquainting you with the services, schools, clubs and societies that are currently active in the villages.

The Sibford Scene Brown Envelope Campaign.

Thank you to the 65 households who have kindly returned their brown envelopes containing donations. It would be very helpful to the running of the Sibford Scene if the other 300 or so could also be returned with a small donation in each. The collection box behind the counter in the Post Office is big enough to receive them and the treasurer will be more than happy to count them up and add it to the bank balance ready to pay for the next 12 months running costs.

HOMŒOPATH

Sheila Job LCH

**Consultations by appointment
Family budget scheme available**

For details please telephone

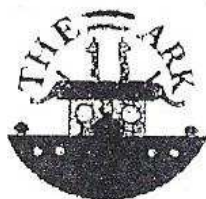
01295 780468

**Fire Lighting Wood
For Sale**

£2 per big bag

**Call in anytime and ask
for Mick Canning, at
The Old Malt House,
Sibford Ferris 780321
Tel; 01295 780321**

Children's Day Nursery, Epwell



- Full day care for children 2½ to 5 years
- Full and part time places
- Open Monday to Friday 9.00am - 4.00pm.
- Excellent Ofsted Report

The nursery provides excellent opportunities for children to explore and learn at their own pace under the guidance of trained, experienced and caring staff.

**For further information ring Julia
Tel: (01295) 780580**

Bed & Breakfast

AGDON FARM

Nr Brailes

**Comfortable rooms
in old stone farmhouse
Tel: Maggie Cripps
01608 685226**

QUIET DAYS AT HANDYWATER FARM, SIBFORD GOWER

DATES FOR 2005

Friday 29th April

9.30am to 3pm or later

led by Rev Dr Hugh White from Deddington

Pearl: a 14th century poem of loss and gain

Another opportunity to be enthralled by Hugh's insights into mediaeval poetry.

Saturday 21st May

9.30am to 3pm or later

led by Rev Professor Abbott Conway, priest-in-charge at Great Tew.

The Seafarer: Exile and Homecoming

Formerly of the Diocese of Montreal, Abbott has in the past led quiet days at Marywood, a 200 year old farm in a lovely riverside setting near Montreal.

Like Handywater, Marywood is affiliated to the Quiet Garden Trust.

The evening of Tuesday 21st June

from 6.30pm

An opportunity to observe the natural world during the evening,
with St Francis at the centre of our reflections.

The evening of Wednesday 13th July

from 6.30pm

An interfaith evening, with representatives from six of the world's great faiths
gathering to pray and reflect together.

Everyone is welcome, from any denomination, or indeed any faith, or none.

Please bring a contribution to a bring-and-share meal.

If you are curious to know more about quiet days,
or if you would like directions to Handywater Farm,
please telephone Sue on 01295 788770.



The Firs, Hook Norton, Banbury. OX15 5DD

Email: graphicsdirect@aol.com

Phone: 01608 730555 Fax: 01608 730271

For all types of Vinyl Graphics & Signage

Theresa Jack

DESIGNING, PRODUCING & FITTING

TREES

WE'RE THERE FOR TREE CARE

All aspects of tree care undertaken
Specialising in reduction/removal of
trees in confined spaces

Supplier of logs & chippings
Over 20 years experience
Fully Insured

For a free quote and a chat please
contact:

Arthur White (The Tree Chap) 01295 788549

142706

Sibford Gower Annual Parish Meeting
Wednesday, 4th May 2005
commencing at 7.30pm

This is a reminder that the Sibford Gower Annual Parish Meeting will take place in the main hall of Sibford Gower Endowed Primary School on Wednesday, 4th May 2005 commencing at 7.30pm. The Chairman of the Parish Council will report on the Council's work during the past year. A financial report will be presented. Invitations to the Meeting have been extended to The Town Estate Charity and our Neighbourhood Watch Representative in order that they may report on their particular areas. Thames Valley Police and Oxfordshire County Council's Deputy Area Engineer who is responsible for the highways in this vicinity have also been invited so that they may respond to any questions or matters of concern which may be raised.

All residents will be welcome so that they may be made aware of what the Parish Councillors strive to do in the interests of Burdrop and Sibford Gower. Please come along to hear from your Parish Council and, also, to put forward any subjects where you may require answers or explanations.



David Randall

Fully Insured

Est. 1989


TREE WORK SPECIALIST

● Tree Work All Types <i>Crown Thinning Reduction Pruning / Re Shaping</i>	● Hedges <i>Reduced / Trimmed</i>
● Stump Grinding Service <i>Minimum ground Disturbance</i>	● Wood Chip Mulch <i>Supplied</i>
	● Garden Fencing All Types <i>Supplied & Erected</i>

Free Quotes & Friendly Advice

01608 738109 / 07831 571176

22 The Glebe, Hook Norton OX15 5LD



FOLLY FARM BACK PAIN CLINIC

ACHES & PAINS?

I can help you!

**Just visit the new clinic near
SWALCLIFFE**

Contact - John McArthur
DC, BSc (Chiropractic)
McTimoney-Corley Practitioner

TEL: 077 40404 678
OR: 01295 788774

The Tuesday Bike Ride Starts Again

With the clocks changing and the evenings getting lighter we will once again be out on our bikes every Tuesday evening from the start of April. We leave Lanes End Corner (the cross roads outside the Manor in Sibford Ferris) at 7.00pm and return at dusk. There is a huge spread of ages (from 11 to 70+) and abilities so everyone can join in. With the shorter evenings early in the season it is a very good time to start as the rides are short and we can all get broken in gently! There is a wide variety of friendly cyclists who come along and enjoy the bike rides as

a social occasion as well as a pleasant form of exercise so please come along and join in. More details from Adrian Lamb 780380 or Joanna Gilkes 788190

Firs Garage

HOOK NORTON, OXON

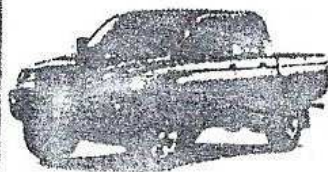
(1 mile north of village)

Phone: 01608 737349

www.firs-garage.com



A world apart from the rest



L200 pick-up Best Gold Award



Mitsubishi Shogun Commercial 4x4 Van Gold Award

TOW WITH CONFIDENCE!

- Sales (New & Used)
- 3 year unlimited mileage warranty (New)
- Optional 12 months warranty
- Part exchange welcome
- Off Road demos
- Service.
- Vinyl graphics: for vehicle graphics, signage, magnetic, banners, etc
- MOTs
- Parts
- Body work
- Insurance Estimates
- Attendant service (Fuel)
- Jet wash
- Friendly service and lots more



ESTABLISHED 1960

IT PAYS TO DEAL WITH A FAMILY BUSINESS
Where good old fashioned personal service & value still count

The Firs Garage would like to thank the local community for their loyal support, it is much appreciated

FRANCIS MORDAUNT
MSSCh, MBChA

VISITING CHIROPODIST

To enquire about a Home Visit,
please telephone;

01295 730615

Professional Foot Care
In Your Own Home

GODSWELL NATURAL THERAPY CENTRE

Godswell Lodge, Church Street, Bloxham
Banbury, Oxon OX15 4ES

Acupuncture, Alexander Technique,
Aromatherapy, Art Therapy,
Chiropody, Chiropractic,
Counselling & Psychotherapy,
Cranio-sacral therapy, Homoeopathy,
NLP, Nutrition, Physiotherapy,
Reflexology, Remedial Massage,
Reiki, Spiritual Healing,
Shiatsu, Yoga.

Fully qualified professional therapists
For information Ring 01295 720347

Village Hall News

Extraordinary General Meeting

Thursday 31st March, 2005 at 8 pm

To present the Village Hall accounts for the 2003/4 financial year.
Any enquires to Terry Young (vice chairman) 780386 or Muriel
Chandler (secretary) 780025

Mark Darvill has had to stand down from the position as chairman of the Village Hall committee. Our vice chairman Terry Young has indicated his willingness to stand as our chairman.

Sunday Markets are continuing on the first Sunday each month as a fund raiser for the Hall. The next one's being on 3rd April and 1st May. Starting at 12 noon these usually go on until approximately 2.30 pm. As well as our usual stalwart stall holders, who have supported us for many years, we have a lady selling aloe vera and Bee Health and Nutrition products both medicinal and make up, and for animal use. A gentleman selling "Deli very" delicatessen fine foods (and try before you buy), who can also deliver to your home. A mother and daughter selling many items including lovely home-made cards (and will make you a personalised card), earrings etc. A couple from Warwickshire selling home made pies, cakes, jams and marmalade. We really do need your help to support these days to keep the fundraising going. Refreshments are available served in our "Tea Room". Entry only 20p.

Our Annual Fayre is booked for Sturday 25th June. If you can help to arrange the fayre or help on the day please ring Ginny Bennett on 780373. Any ideas for new games etc. gratefully received.

We are happy to announce we have booked a return of "The Heart of England Jazz Band" by popular request on Saturday 22nd October. Further details later.

To hire the Hall please ring Kathleen Winter, our booking secretary, on 780461.

<i>Patrick Bowen Fine Art Consultants</i>	
<i>Patrick Bowen BA (Hons) Lond. MRICS</i>	
<i>Asset Management</i>	<i>2 Stewarts Court</i>
<i>Professional Inventories</i>	<i>Sibford Ferris</i>
<i>Valuations for insurance,</i>	<i>Oxon</i>
<i>probate, Market</i>	<i>OX15 5QX</i>
<i>and family division</i>	
<i>Sale and aquisition</i>	<i>Phone 01295 780990</i>
	<i>Mobile 07979 911892</i>
<i>Email: patrickbowen@btopenworld.com</i>	

HOLY TRINITY CHURCH NEWS

The Annual Meeting of the church was held on Wednesday 2nd March. Eric Payne and Ann Spicer were re-elected as Churchwardens. Eveline Boughton, Cathy Cawley, Helen Earle, Gladys Stevens, Sue Wilson, Kathy Yorke, Peter Hardman, and Tom Pratt were elected as members of the Parochial Church Council, Erica Wimbush as Deanery Synod representative. All of these were elected as Sidespersons and in addition Judy & Peter Abbott, Bill Dunkley, Petra Berry, Gaynor Harper-Tarr, Keith Hicks, Peter McGee, Robin Spicer and James Wimbush. At the subsequent meeting of the Council, Peter Hardman was elected as Secretary and Cathy Cawley as Treasurer. Tributes were paid to Maureen Warden and David Soden, the retiring PCC members.

There was a very large congregation for the Mothering Sunday service on 5th March at which there was also the Baptism of Helen Jane Skinner, who had a great many supporters present, some from long distances.

The series of Wykeham Benefice lunches in this year's Lent Austerity Lunch continued at Tadmarton on 28th February where donations were in aid of Banbury Young Homeless Project (BYHP) and at Epwell on March 7th in aid of The Eve Appeal for the Gynaecological Cancer Research Unit (GCRU). Future lunches will be held in Broughton and Shutford.

The Lent Groups continue at Wyatt's Close, Sibford Gower on Tuesdays from 7.30 to 9.00 pm and 32 Danvers Close, Broughton on Thursdays from 10.30 am to noon, to which all are welcome.

The Scouts held a Coffee Morning and Lunch on Saturday 12th March in the Sibford Village Hall in aid of the Tsunami Appeal. A collection of £220.00 was made and thanks are extended to all who arranged and supported this successful function.

The Annual Church Fete will be held in the Village Hall on **Saturday 30th July at 2.30 pm.**

SIBFORD SALON OF BEAUTY

01295 788463

Botox - Red vein removal - Hydradermie

Oxygen facials - Calgel nails

Indian head massage - loads more

Regular offers - Gift Vouchers

www.sibfordsalon.co.uk

New clients 10% discount with advert



**Your garden could
reflect your style..**

Cathy Wallwork

Garden Design



Creative, sensitive garden designs

Beautiful planting schemes &

Professional planting & landscaping

Tel: 01608 685 314

**..with help from an
experienced designer**

Church Services

Society of Friends		Sunday at 10.30 am
Methodist		Sunday at 11.00 am
Roman Catholic Mass	Wroxton	Sunday at 9.00 am
	Brailes	Sunday at 11.30 am
Baptist	Hook Norton	Sunday at 10.30 am
Church of the Firstborn (Bridleways S.Gower)		Sunday at 10.30 am
Church of England, Holy Trinity, Sibford Gower.		

March Mon 21st to Sat 26th Holy Week. Matins 7.30 am every day

Thu 24th Eucharist for the Last Supper 8.00 pm

Fri 25th Good Friday 1.30 pm Tadmarton & Words and Music for Good Friday at Broughton 7.00pm

Sat 26th Easter Vigil 11.00 pm

Sun 27th 8.00 am Holy Communion & Family Service at 10.00 am

April Sun 3rd Benefice Service at Broughton 10.00 am

Sun 10th Family Service 10.00 am

Sun 17th Holy Communion 9.30 am

Sun 24th Holy Communion 9.30 am

May 1st Benefice Service at Tadmarton 10.00 am

FARMHOUSE BED AND BREAKFAST GRANGE FARM SWALCLIFFE

*Enjoy warm hospitality & peaceful
surroundings in our comfortable 18th C
Farmhouse*

**CONTACT: BARBARA TAYLOR
TEL. 01295 780206**

THE VILLAGE SHOP HOOK NORTON

NATIONAL LOTTERY

Grocery - Greengrocery - Bakery

Wines - Spirits - Confectionary

Newspapers - Magazines - Cards

Video Rental - Bottled Gas

Open Monday to Friday

7 am to 8 pm

Saturday 8 am to 8 pm

Sunday 8 am to 6 pm

Telephone: 01608 737245



RED HORSE VALE LTD

All Types of Fuel, Coal, Smokeless, Gas,

Logs, Kindling, Barbecue Needs

Central Heating Oil, Oil Tanks & Coal Bunkers

Landscape & Building Materials, Garden Centre
& Garden Supplies. Farm & Country Sundries

Equestrian Products, Horse & Pet Feeds

Open: Monday - Saturday 8am - 5pm

Windmill Farm, Banbury Road (A422),

Oxhill, Warwickshire CV35 0RL

Tel: 01926642832

Fax: 01926 642 853

Reflexology Remedial Massage

Elizabeth Webber

MAR.LCSP (Phys)

12 years experience

Godswell Natural Therapy Centre

Bloxham, Banbury

Tel: 01295 - 788101

Sibford Bus Services

Free Bus Service

To Banbury Thursdays April 7th & 21st Departs 10 am
 To Chipping Norton Wednesdays April 13th & 27th Returns 12 noon
 Pick up points are; The Colony, High Meadow, Cross Roads, Village Hall.

Cherwell Villager 55 Sibford ~ Banbury

Wednesdays Only	Outward	Return
Sibford Gower	9.55 am	The bus leaves
Sibford Ferris	9.57 am	Banbury at 12.30
Hook Norton	10.05 am	but arrival home
Milcome	10.15 am	is variable due to
Banbury	10.30 am	drop-off needs.
Cost £1.40 each way (National Bus Cards and Bus Tokens are accepted)		

Cherwell Rural Dial-A-Ride Scheme

A mini bus with tail-lift to take **elderly or disabled people** and escort to Banbury (max fare £1.60) Door-to-Door service. Book at least one day in advance. Operates on Wednesdays & Thursdays. Phone 263777 for details. BCTA also takes bookings for groups of 8 or more on a weekly/monthly basis (Wednesdays & Thursdays) to and from Banbury. Tel; 263777

BUS 480 - Times from 13 April 2004 - Mondays to Saturdays

From Banbury towards Shipston

	GA	CH	GA	GA	CH	GA	CH	GA
Banbury Bus Station dep.	08.45	10.50	11.45	13.45	14.45	16.10	17.10	18.10
SIBFORD GOWER School	09.10	11.15	12.10	14.10	15.10	16.35	17.35	18.35
Shipston, Pettifers Garage	09.31	11.36	12.31	14.31	-----	16.56	17.56	18.56

From Shipston towards Banbury

	Sats		M-F							
	CH	GA	CH	CH	GA	CH	GA	GA	GA	CH
Shipston, Pettifers Garage	6.55	7.45	8.45	-----	9.45	11.45	12.45	14.45	17.10	18.10
SIBFORD GOWER School	7.20	8.10	9.10	9.10	10.10	12.10	13.10	15.10	17.35	18.35
Banbury Bus Station	7.45	8.35	9.35	9.35	10.35	12.35	13.35	15.35	18.00	19.00

Buses serve Sibford Ferris two minutes before the times shown towards Shipston and two minutes after the time shown at Sibford Gower towards Banbury.

Notes: Sats = Saturdays only, M-F = Mondays to Fridays only.

GA = Operated by Geoff Amos. CH = Operated by Cheney Coaches.

Both companies will operate most journeys, where possible, by low floor wheelchair accessible vehicles.

Sorry, No services on Sundays or Public Holidays

For complete times at all of the intermediate places that are served by 480 please see new timetables on bus stops from 13 April or available from bus drivers beforehand.

Calendar of Events

March

Tue 29th Friendship Club Easter Tea. 2.00 pm Village Hall p9

Thu 31st Village Hall Extraordinary General Meeting 8.00 pm p20

April

Sat 2nd Ferris Litterblitz 10.00 am p3

Sun 3rd Village Hall Market p20

Mon 4th to Fri 8th ROAD CLOSED ACROSS THE HILLS p6

Tue 5th Friendship Club meeting. Village Hall 2.00 pm p9

Tue 5th Tuesday Bike Rides Start Again p19

Wed 6th Mobile Library in Sibfords and Burdrop (2.40 - 4.25pm)

Fri 8th Family Bingo at Tadmarton Village Hall 6.45 pm p9

Sat 9th Gower Litterblitz 10.00 am p3

Tue 12th W.I. A.G.M. & Bring and Buy. p8

Wed 13th Horticultural Society 'Making the most of your Garden' 8pm p5

Tue 19th Deadline for contributions to the May Sibford Scene p6

Wed 20th Mobile Library in Sibfords and Burdrop (2.40 - 4.25pm)

Thu 21st Sibfords Society 'Chair Making' p7

Tue 26th Friendship Club Outing p9

Wed 27th Sibford Ferris Annual Parish Meeting 7.45pm Sibford School p11

Fri 29th Quiet Day at Handywater. P17

May (part)

Sun 1st Village Hall Market p20

Tue 3rd Friendship Club A.G.M. P9

Wed 4th Gower Annual Parish Meeting 7.30 pm Primary School Hall p18

Fri 20th Family Bingo at Tadmarton Village Hall 6.45 pm p9

Sat 21st Horticultural Society Plant Sale p5

Sat 21st Quiet Day at Handywater. P17

Cover picture - Re-print of a cover drawn in 2001 for the Sibford Scene by Sheila Walsh who died last month.

Sibford Scene

Editor; Adrian Lamb. Grounds Farm, Sibford Ferris. 780380

e-mail adrian.lamb@care4free.net

Treasurer; Timothy Wimbush, The Rectory, Acre Ditch, S.Gower
780555

Advertising; Ivor Hopkyns, Elmridge Farmhouse, Sibford Gower,
Banbury, Oxon. OX15 5RT. Tel 788367