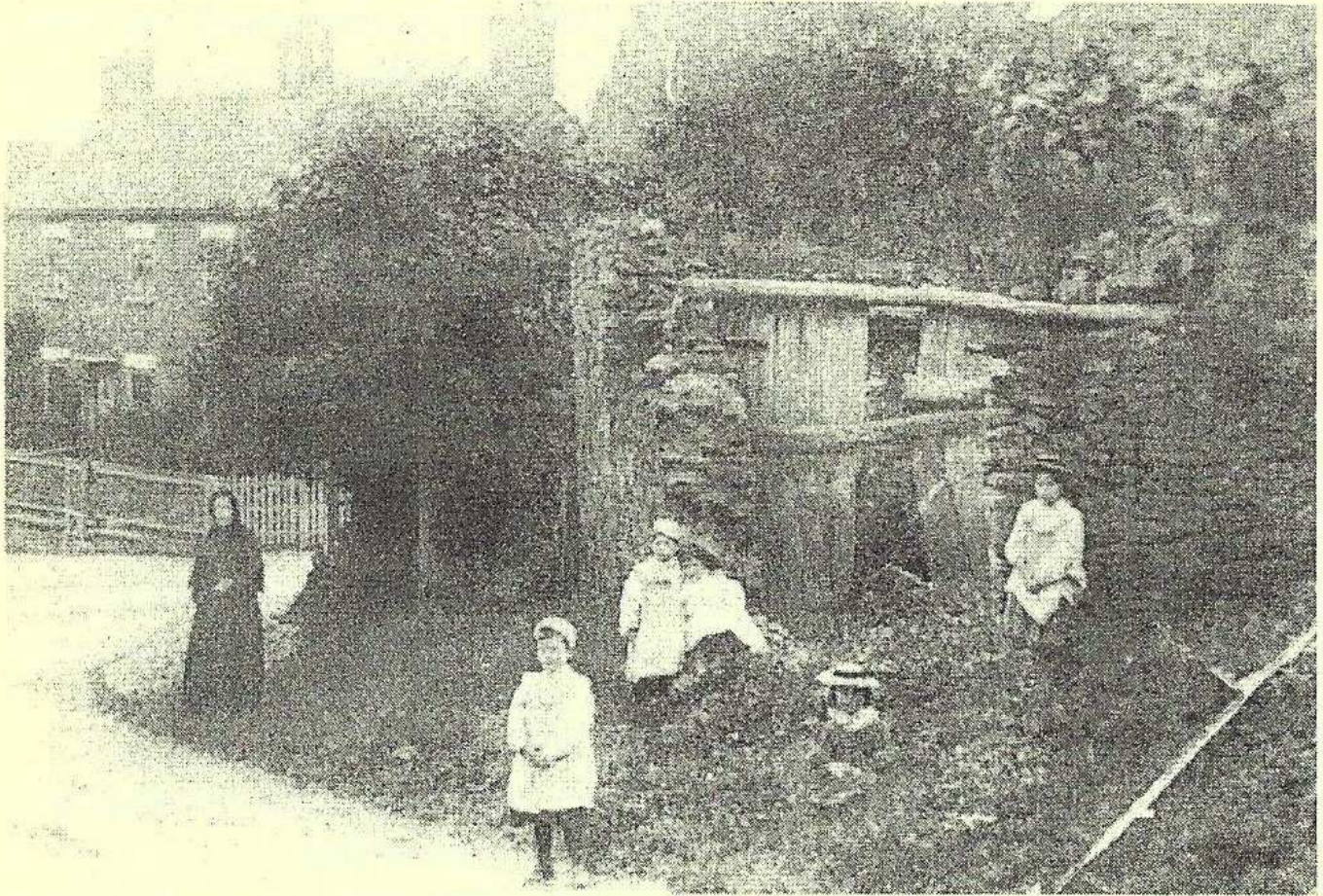


Sibford Scene



October 2004

No. 267

Sibford Village Hall Present

Bruce Boardman's New York Café Band
Saturday 16th October 7.30 pm.

Jumble Sale

In aid of Katharine House Hospice

Saturday 23rd October 12.00 - 2.00 pm
In the Village Hall

Coffee Morning at Westerways

In aid of Guide Dogs for the Blind

Wednesday 27th October 10.00 - 12.00

Nature Notes

July. 24th. I recently went to look for some young crows with the markings of hooded crows that I had been told occupied an area just south west of Sibford Gower. I got a distant flying view of them through my binoculars and they did look very like hoodies. Although hooded crows are occasionally seen in the Banbury area I don't think they ever breed here.

July 29th. A flock of gulls spent quite a long time twisting and turning high overhead in a way that I had not seen before. They must have been catching flying insects, perhaps on this warm sultry day it could have been flying ants.

Aug. 4th After last evenings violent thunder storm that produced nearly an inch of rain, today's sunshine has brought out masses of butterflies, mostly gatekeepers but with several small coppers and common blues, which at first I thought might be brown argus but when I saw some common blue males it made me think that they must be common blue females. We are seeing some red admirals, peacocks, tortoiseshells and painted ladies but not nearly as many as last year and I have not seen any of the humming-bird hawk moths that were plentiful then.

Aug. 13th Walking this evening we could see that most of the wheat is yet to be harvested and long roots are growing from the ears in the flattened areas, which is not surprising as August is already the wettest month of the year and we are not half way through it yet.

I have been told of two separate sightings of ospreys passing over Sibford. The first at a great height and the other not quite so high up.

Aug. 29th A song thrush died when it hit our double glazed window. It is probably young inexperienced ones that die in this way.

Aug. 31st I measured over 5.3 inches of rain in August but hopefully the weather is now on the mend.

Sept. 4th A grain merchant tells me that the quality of the wheat he is buying is better than he thought it would be after such a wet August.

Sept. 10th After a much better spell of weather the harvest is pretty well completed thanks to modern harvesting equipment. I can all too vividly remember wet harvests when we used to cut the corn with binder and set the sheaves up in shooks to dry. In years like this the tops of the shooks would grow together so that they had to be dragged apart and reshooked before they had any chance of drying.

**QUIET DAY AT HANDYWATER FARM, SIBFORD GOWER
WEDNESDAY 20TH OCTOBER 2004**

This will be the last quiet day at Handywater for the 2004 season. It will be led by Reverend John Stroyan from Bloxham, and he is taking as his theme '*Coming to God, and letting God come to us*'. This is an opportunity for spiritual refreshment, reflecting on prayer as work, rest, and play.

As usual we invite you to arrive in good time, from 9.30am for a 10am start, bringing if you would a contribution to a bring-and-share lunch. The day will come to an end around 3.30pm.

There is a friendly core of regular attenders at these quiet days, with a few newcomers on each occasion as well. First-timers are always made to feel particularly welcome, so if you haven't been before and would like more information about what happens at a quiet day, or you would like directions to Handywater, please ring Sue on 01295 788770.


Ann Woolgrove
FABRICS, CURTAINS & SOFT FURNISHINGS

Handsewn & interlined curtains & pelmets our speciality
Roman & Roller blinds
Customised design service and home consultancy
Every kind of fabric from many leading manufacturers
Decorative Poles, Tie backs & Trimmings

Loose Covers and Cushions	Lampshade making
Wallpapers & Interior Decoration	Custom made Bedspreads & Headboards

Tel/Fax: 01295 788145

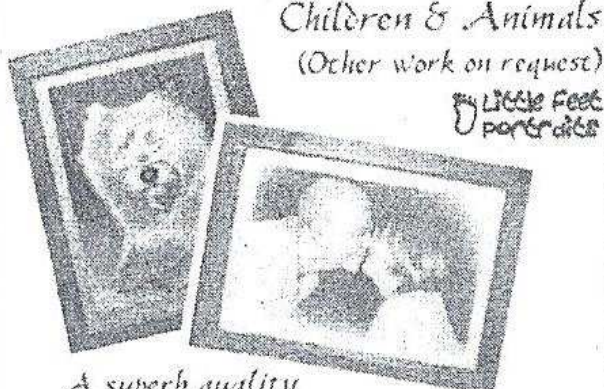

Oddjob

CARPENTRY
PLUMBING
ELECTRICS
HEATING INSTALLATION
KITCHEN & BATHROOM FITTING
BUILDING WORKS
SECURITY

FOR A COMPREHENSIVE AND RELIABLE LOCAL SERVICE
HUGO SEELY 01295 780355
FREE NO-OBLIGATION ESTIMATES
No job too large
Excellent local references available

An Ideal Gift for Christmas

*We Specialise in Portraits of
Children & Animals
(Other work on request)*



*By Little Feet
portraits*

*A superb quality
original pencil portrait created from your
favourite photograph. The perfect gift for
Parents, Grandparents & Pet Lovers.*

*Place your Christmas order by 7th Nov 04
& receive £5 discount for Sibford residents
Delivery approx 4-6 weeks. Size 11 X 15'
Normal price £67 unframed (£89 framed)
Call 01295 788542 - for orders and enquiries*

Coffee Morning

in aid of
Guide Dogs for the Blind
Association

Westerways
Sibford Ferris

Wednesday 27th October

10 am - 12 noon

Bring and Buy - Cakes and Jam,
Raffle.

G.D.B.A. Christmas Cards &
Gifts

(Aluminium Foil and used stamps
gladly received)

Sibford Stores & Post Office

Sibford Ferris

OX15 5RG

Tel: 01295 788317 / 788348

Your Local Convenience Store

Your local newsagent, we deliver newspapers and magazines 7 days a week to all the surrounding area, always a wide selection of newspapers and magazines available in the shop. Place your regular order today

Bread, cakes and savouries baked on the premises throughout the day.

We are your local National Lottery Agent

Photocopying, fax and mailing service available on the premises.

Agents for Dry Cleaning and Laundry.

Chilled & frozen foods, groceries, cigarettes, beers, wines and spirits, fresh fruit & vegetables, pet foods, medical and toiletries and lots, lots more.....

Telephone your grocery order for free local delivery 7 days a week.

OPENING HOURS

Monday to Saturday 5.30am to 6.00pm

Sunday 5.30am to 1.00pm

Sibford Horticultural Society Annual Show

This event was very well supported with entries up by over a hundred on last year, it was so good to see so many new people entering the show, and our thanks to everyone who helped to make it such a success. In September we had Mrs Cropley to talk and show her beautiful slides of summer bulbs for the garden, we hope to have a visit to her garden next year.

October 13th is the AGM at 8.00 pm in the Village Hall and it would be nice to see many there with ideas for future events, also any who would like to be on the show or ordinary committee. After the AGM which will be short, we have Tony Clear talking on plants for winter colour, we hope to see many of you there.

Sibford Village Hall presents

Bruce Boardmans New York Café Band

16th October at 7.30 pm. In the Village Hall

Tickets £7 and £5

from the Village Shop or phone 780025



The Bishop Blaize Inn

17th Century Freehouse

Burdrop, Sibford Gower

Tel. (01295) 780323

Sam and Sheila welcome you

Senior Citizens Winter Special

25% **OFF** all meals on our main menus board
Monday - Friday Lunch (For persons 65 and over)

Dont forget - Monday night is take-out night

Fish or double jumbo sausage and chips - **NOW** includes ALL meals from our childrens menu

QUIZ NIGHT - our quiz night will now be the last Sunday in each month until the end of
March, 2005 - 8pm start

NO food will be served Sunday evening October to March



The playgroup staff and children are already back in the swing of things for the start of another 'school year'. Michelle has transferred seamlessly to her new role as Supervisor and with lots of encouraging words from OFSTED and the support of Judith and Dawn, things are going very well for her first term in the role. We are joined by some new children and a new member of staff this half

term. Welcome back to Mandy Wymer-Hoad who will be taking on the role as Playgroup Assistant and a warm 'hello' to several new children - Abigail Luke, Isabel Collis, Archie Beardsley, Matthew Graham and Hannah Kisley. The children have been engrossed in the theme of Harvest since coming back - cooking delicious blackberry tarts (thanks for the pastry, Judith); making harvest mice and making a special harvest visit to the church. Their playhouse has been transferred into a woodland wonderland and if you enter the small hall you will see the seasonal artwork that the children and staff have been working hard to produce.

If you would like more information about playgroup or if you wish to secure your child a place then please contact us on 780998 (Monday to Friday mornings).

Village Hall Monthly Markets
Sunday 3rd October & Sunday 17th October
Christmas Cards and Calendars now on sale
in aid of the Katharine House Hospice

The Gate Hangs High Inn

Hook Norton

Oxfordshire OX15 5DF

Tel: 01608 - 737387 Fax: 01608 - 737870

Home Cooked Food daily Lunchtimes & Evenings

Traditional Sunday Lunches

Hook Norton Real Ales Courtyard Garden

Car Park Accommodation Available

Proprietors: Stephen & Karen Coots-Williams

Contributions for the
November
Sibford Scene
to the Shop or Editor
by
October 19th



Our first Autumn Meeting was well attended to listen to Peter Noble talking about Steam in Agriculture, which he illustrated with slides, showing early advertising for the first portable steam engines, pulled by horses, made in

1845 to the end of the use of steam in the countryside in the 1970's. During the 19thC the engines became more sophisticated and were able to do all of the jobs present day machinery is capable of but using prodigious amounts of coal and water. The method of ploughing and harrowing, etc., was to position two steam engines on opposite sides of the field, with cables running between them, on which was attached the plough and it was then hauled forwards and backwards across the field. A team of five men would travel between farms with their engines, living on site in a van between the months of March and November.

Eventually, many steam engines were converted to diesel, as they fired up within a few minutes, unlike the steam, which took up to two hours to reach the correct pressure.

The next meeting is on **Thursday, 21 October** in the Village Hall at 8.00pm, when we have a return visit by Mike Hallam, who will talk about the Village History of his own village, which will have parallels with our own village.

Sibford Table Tennis Club

At the Annual General Meeting it was agreed to enter 5 teams in the Banbury League this year.

From **Saturday 16th October** there will be practice nights for juniors (preferable over 9 years of age) starting at 7.00pm & costing 50p per session.



LOGS



TOP QUALITY, SPLIT, SEASONED
HARDWOOD LOGS
BULK OR BAGS

DAVID RANDALL TREE WORK
01608 738109 / 07831 571176

Re - Upholstery

Antique & Modern
Dining Chairs Easy Chairs Arm Chairs
Three Piece suites Etc.
Furniture Repair
20 Years Experience
Free Estimates
B. WEBBER
01295 269362



Women's
Institute

W.I NEWS.

An almost full coach of members, husbands and friends set off from the village hall on the 10th August for the annual outing. This year it was to Bowood House, Wiltshire.

We arrived at Bowood in lovely warm sunshine and it stayed fine for the duration of our visit. Some went to find a suitable place for a picnic and others made a beeline for the restaurant where an excellent lunch was available. Some were seen to disappear to explore the arboretum, whilst others decided to look over the magnificent house. Not all the rooms were open as the Marquis and Marchioness of Lansdowne reside in part of the house. Bowood is an early Georgian house and has been open to the public since 1975. During the afternoon, those who were able embarked on the long walk down to the lake (with splendid views of the house) and the attractive waterfall. Shortly before boarding the coach for home, a cup of tea and cake in the tea shop nicely rounded off a most enjoyable day indeed. A big thank you is due to Mary Bristow for organising our outing so efficiently and to Peter Hardman for taking care of the finances on the day. Finally, thanks to Margaret's son-in-law for transporting us there and back so comfortably.

At our monthly meeting on September 14th, the record was read by Linda, then agreed and signed. Apologies were received from a number of members who were on holiday and Pat Horsley, who was at home recovering from surgery. A letter was received from Brenda Power, who has recently moved to Stratford-upon-Avon. She expressed her sadness at having to leave Sibford W.I. She is a long-standing member, serving on Committee and doing a spell as President. Cards of good wishes have been sent to Pat and Brenda.

Four members had been to Cheltenham Town Hall and enjoyed the talk by Betty Boothroyd. Lynda, Glennis and Kathleen (Reid) are going to Oxford Town Hall on 28th September to hear Edwina Currie.

The next Group Meeting will be held at Tadmarton on **October 28th**, where the speaker will be Mrs Jones on 'Me and My Dolls'. The competition will be for a Halloween Doll.

Then we came to our speaker, a Mr. H. Sutherland, whose talk was entitled 'Elizabeth 1st at Charleote'. He spoke of the visit of Elizabeth 1st to Warwickshire in 1572, outlining life in the Elizabethan period, pointing out the differences in the wealthy and the poor and he talked specifically about the hospitality that was shown to Elizabeth by her host families. Mr Sutherland's talk was detailed and fascinating. We then all enjoyed a cup of tea and cakes, provided by Kathleen (Winter), assisted by Mary. The raffle was won by Jane.

The speaker at our next meeting (**October 12th**) will be Miss Shirley Smith, whose talk will be entitled '50 Years in the Life of a Nanny'. The competition will be for an old toy. Visitors are always welcome.

GH/MW.

HELP WITH BATHING NEEDED

Help is needed to bath and dress a young woman suffering from cerebral palsy when she returns home to her mother in Sibford for occasional weekends. It would be needed for 2 or 3 mornings over a weekend approximately once a month, at about 9 a.m. although the timing could be flexible. It should take about half an hour, and remuneration would be at £7.50 per session.

Experience is desirable, but not essential as training could be given. A pleasant personality and a sense of humour are more important! If you feel you could help, please telephone Judith Weeks on 01295 788393.

GARAGE GIVEAWAY

Saturday 2nd October
10am - 1 pm

Lime Tree House, Swalcliffe
(opposite church)
Everything Free
Optional donations to
Katharine House Hospice.

North Cotswold Chamber Choir

Saturday 16th October at 7.30 pm
Saints Peter and Paul, Deddington

Faure Requiem *Allegri Miserere*

Bernstein Chichester Psalms

Finzi Lo. The full final sacrifice

Tickets £10 / £8 conc / £4 under 14s

From: tickets@nc3.org.uk

Richard Wallington

Builder

Block Paver Drives A Speciality

Also Extensions, Patios

Fencing etc.

High Quality Work. Free Estimates

01295 780705 07743 932545

(Sibford Gower) (Mobile)

♠♠♠♠♠♠♠♠♠♠

Aromatherapy, Swedish Massage
Indian Head Massage, Reiki,
A Holistic attitude to health.

Virginia Bennett RGN 01295780373



DON'T BE LEFT OUT!

Buy your very own signed copy now

"There is a Destiny"

A novel by P.C. Calveley

(local author)

"A gripping kaleidoscope of
interesting times"

"A real page-turner"

"Certainly catches the flavour
of an era"

Hardback 483 pages £12.95

Free delivery within ten miles of

Sibfords or £3.00 p & p

Ring 07973795833

Or 01295 780565

INVITATION TO TAKE PART IN A TRANSPORT NEEDS SURVEY

Note from Sibford Ferris & Sibford Gower Parish Councils

REVIEW OF BUS SERVICES BY OXFORDSHIRE COUNTY COUNCIL

The County Council proposes to undertake a review of the bus services which it supports financially in the Banbury area over the forthcoming months. Most of these contracts expire in late May/early June 2005 and it is the County Council's policy to review the network prior to going through the tendering process and the subsequent award of new contracts for a further four years until June 2009.

The Oxfordshire Rural Community Service is leading an initiative, in conjunction with the Public Transport team at the County Council, and the Parish Council has been asked to seek local information and views by way of a survey, the results of which will be analysed by the Rural Community Transport Adviser of the ORCC and fed back to the County Council. Included with this issue of the Sibford Scene is survey form which you are invited and urged to complete. Judith and Terry have very kindly agreed that Sibford Ferris Village shop may be used as a collection point and the completed survey forms may be left there. Should further information be required, it is available from Anita Spencer (Clerk to Sibford Ferris Parish Council - Tel 01295 788557) or Peter Hardman (Clerk to Sibford Gower Parish Council - Tel 01295 780391).

The Parish Councillors sincerely hope that all residents will take part by spending a little time in completing the survey forms and they extend their thanks for and appreciation of your anticipated involvement.

**PLEASE HAND IN THE COMPLETED FORM TO
SIBFORD STORES & POST OFFICE
BY 15th OCTOBER 2004**

**Change of Time
Stay Supple at the Village Hall, now from 9.30 to 10.30 am.**

CHIROPRACTOR

John Mulley

DC MCC BAAC

AM Clinic, Banbury: 01295 262100
Bicester Chiropractic Clinic: 01869 321166
Or: 01295 780629

McTimony-Corley

Also treats animals

DAVID MALONE

HIGH CLASS PAINTER AND DECORATOR

Acre Ditch
Sibford Gower
Banbury
Oxfordshire OX15 5RW
Tel: (01295) 780546



CITB REGISTERED

Broken Colour Effects and Paperhanging a Speciality

**HAVE YOU OR SOME ONE YOU KNOW BEEN
HELPED BY THE HOSPICE?**

**Peter and Margaret Whittle invite you to
the 2004 Annual Sale(our 12th) of**

Cottage Crafts

**FRIDAY/SATURDAY/SUNDAY
OCTOBER 29th/30th/31st
MALCOLM'S COTTAGE**

TADMARTON

(B4035 Banbury to Shipston road)

10am - 5pm

PETER & MARGARET'S crafts this year include:

**traditional & wooden toys for children & adults
creaturesaurus/ lambs/patchwork galore
over 1000 jams & chutneys using locally grown produce
ballet bags & cushions/climbing frogs/fudge
nativity scenes/ Amish cushions/cards/hand warmers
expanding toast racks/fridge hats and a C.D. of
stories written & read by Margaret**

**There will also be Heyland & Whittle
handmade soaps as well as their candles**

BRING & BUY CAKE STALL

light lunches available 11.45 - 2.30

**ADMISSION £2 INCLUDING REFRESHMENTS
in aid of**

THE KATHARINE HOUSE HOSPICE, BANBURY

ample parking well signposted

Sibford Ferris Parish Council Meeting, 23rd August

The notice placed in the last edition of the Scene requesting ideas for a replacement for the play area roundabout did not draw any suggestions from the village. A new, small roundabout will be ordered to replace it. There were a couple of kind offers from people willing to join a new play area committee. It was felt that a less formal "Play Area Liaison Group" would be more workable. The Group will meet as necessary, and will report back to the Parish Council with any suggestions to improve recreational facilities for village children. It is expected that the new footpath joining the path next to the Manor development and the one down Mannings Hill will be constructed during October. It was noted that the new wheelie bin near the shop was being used, and hopefully the bin will contribute to a tidier village. Sibford School advised that the containers have been sold and hopefully will all have been removed by the time this note is published. Extension works to the burial ground are to be postponed until next year. There has been communication with Swan Hill Homes and also Cherwell District Council over the change of name of the Manor to "Sibford Grange". It is still unclear why the name has been changed and the Parish Council are pursuing the matter with Swan Hill, with support from the Sibfords Society. Sibford School are renewing efforts to stop vehicles from using their entrance in the centre of the village and have explained that this is for reasons of student safety in areas of their site where traffic could put

students at risk. The audited Annual Return for the year ended 31 March 2003 was received and it was approved and accepted by the Parish Council. In line with regulations, it has been displayed at the shop for 14 days. Complaints about very loud fireworks coming from Rye Hill Golf Club on 20 August were made and subsequently the Clerk received an unreserved apology by telephone from the Club, with assurances that they had not appreciated how loud the fireworks were going to be and that there would be no recurrence.

The next meeting of the Parish Council will be on **Monday, 4th October at 7.45 pm** in the top floor room of the Sports Hall, Sibford School.

Anita Spencer - Clerk



sarah walker
FLOWERS

Fresh flowers in Sibford

- ✿ *Gorgeous hand-tied bunches*
- ✿ *Tissue wrapped seasonal blooms*
- ✿ *Weddings - parties - christenings*
- ✿ *Flowers for offices - shops and restaurants*
- ✿ *Funeral flowers*

Free local delivery

Telephone 788505

*Lavender Cottage, Bonds End Lane,
Sibford Green, Banbury OX15 5RT*

Sibford Ferris Play Area

A Play Area Liaison Group has been formed to come up with ideas to improve play facilities for the village. The Group will meet informally as required. If any other villagers are interested in joining the Group please do not hesitate to contact the Clerk, on 788557. One proposal recently made to the Parish Council was to put a roof over the existing play area in the hope that children would be able to use it for a greater part of the year. As this would be an expensive option, the Parish Council is putting the suggestion to the village and would be grateful for any thoughts or comments, either by telephone to the Clerk, or in writing via the village shop.

LEO CLUB

We all seemed pleased to resume our meetings this month, and met up on the 21st at Glennis's house. There were just enough people to fill her sitting room, without having to squeeze ourselves in too much. We discussed our Christmas meal, traditionally held in January (cannot believe the time has gone by so quickly!) and asked for a volunteer to arrange it. Eileen manfully took up the challenge and we hope we can book in somewhere fairly local, as the weather is almost certain to be doubtful by that time. We always venture further afield for the summer outing, but try not to travel too far when there is a possibility of snow and ice.

Then it was time for Lynda's talk. She had called it "Holiday Happenings", but it really involved much more than that. It spanned over the years during which she had been married and the many adventures she

and her husband, Peter, had had almost all over the world. There were many disasters and many happy memories and it was all very enjoyable to listen to. Our next meeting will be on the **19th October**, at Gaynor's, when Glennis will tell us about last year's holiday in Australia, when she and Peter (a different Peter!!) visited the Red Centre. This will be accompanied by a slide show. We shall all look forward to hearing it.

MW.



BUILDING PLANS

BUILDING REGS. SUBMISSIONS

NEW BUILD EXTENSIONS ALTERATIONS

D.R. BOVILL, B.A.
PLANNING & DESIGN CONSULTANT

PRIVATE AND TRADE ENQUIRIES - PLEASE CALL
01295 780609 OR 07890 591783

WELCOME TO SIBFORD

If you are a new resident of Sibford and have not yet received a copy of the "Welcome to Sibford" booklet, please telephone Maureen Warden on 788252 (Gower or Burdrop) or Ann Bishop on 788188 (Ferris), and a copy will be delivered to you. The information will help to make you feel at home - by acquainting you with the services, schools, clubs and societies that are currently active in the villages.

This month we say WELCOME to:-

Louise and Antony Harwood, who had just moved into Leasowe, Bonds End Lane with their two little boys. Tom is 7 and Jack is 6, and they were starting at the primary school at the beginning of this term. They also have a little spaniel called Sage.

The family rented a house in Duns Tew for a year, while they looked for a house in Sibford and are delighted that they have eventually managed to find a house that they love, in such beautiful surroundings. The views from their garden are delightful.

As for hobbies, Antony is an amateur astronomer, while Louise enjoys riding, cooking and reading. Antony works as an independent literary agent in Oxford. Louise writes popular fiction and is to have her third book published next year. Her first one is entitled: 'Calling on Lily' and is set in Shropshire. They are both keen to get to know lots of people and to settle down in Sibford

In the Ferris we are pleased to welcome;

Michael Goodwin, the new head of the Friends School, and his family, who have moved into Holly House over the summer holiday. Michael's wife is Veronika and they have four children - Benedict (18) Christina (16) Edmund (Ned) aged 13 and Mathilda (Tilly) aged 10. They also have a lively Tibetan terrier aptly named Sherpa.

Ray and Helen Pearce have moved into Number one Hook Norton road with their children Thomas aged 5 and Isabelle aged 1. They have come from Little Compton and hope to get to know some new friends in the village.

We have two new arrivals at the Manor development. First at number 4 Walford Road is Lynn and Maurice Archer, who have moved here from Flore in Northamptonshire. Number 3 Walford Road is the new home of Cathy and Rob Cawley, who have come from Suffolk.

Friendship Club

We had no meeting or outing in August but Bea Tanner and her daughter Sandra organised a Garden Party which, due to the uncertainty of the weather, was held in the Village Hall. A total of £143 was made for the club and we must thank Bea and Sandra for all their work and also the stall holders and everyone who helped in putting up and taking down tables, putting out chairs, working in the kitchen providing teas, washing up and everything else which has to be done behind the scenes. Also many thanks to all those who supported this event and helped to make it such a success. At our meeting in September we had a short discussion on future outings etc. and then played five games of card bingo. The afternoon was rounded off with a delicious tea provided by Phylis and Dinah.

Our next meeting will be on **Tuesday 5th October** at 2.00pm in the Village Hall when we have a speaker - subject not definite - but could be her experiences when delivering the milk. Sounds interesting! We have a coach trip arranged for **Tuesday 19th October** when we shall be going to the Visitor Centre at Heathrow Airport. A meal is being arranged en-route. Further details at our meeting on the 5th.

Cherwell District Council Environment Forum, in partnership with Oxfordshire County Council, presents

Moving away from Landfill

A discussion on the future of waste disposal in Oxfordshire.

An update on the new recycling and refuse collection arrangements in Cherwell.

What do you think? - Your chance to have your say!

Tuesday 5th October 2004 6.30 - 9.00 pm

The Council Chamber, Bodicote House.

For further details or to book your place, contact Alison McHugh - 01295 221637

E-mail alison.mchugh@cherwell-dc.gov.uk



The Firs, Hook Norton, Banbury OX15 5DD

Email: graphicsdirect@aol.com

Phone: 01608 730555 Fax: 01608 730271

For all types of Vinyl Graphics & Signage.

Theresa Jack

THE FIRS, HOOK NORTON, BANBURY, OX15 5DD

TREES

WE'RE THERE FOR TREE CARE

All aspects of tree care undertaken
Specialising in reduction/removal of trees in confined spaces

Supplier of logs & chippings
Over 20 years experience
Fully Insured

For a free quote and a chat please contact:

Arthur White (The Tree Chap) 01295 788549

Sibford Gower Parish Council

It was with regret that the Parish Council Meeting which was scheduled for Friday, 17th September 2004 had to be postponed because unexpected commitments by three Parish Councillors made the required quorum to be not available. The Meeting will now take place on **Friday, 22nd October 2004** commencing at 8pm in the usual venue (Sibford Gower Endowed Primary School). Members of the public are, as always, cordially invited to be present. Amongst the items, at present, on the agenda is the future of the land which was bequeathed to the Parish Council by the late Miriam Tebbs. Suggestions have been sought in the past and any views will be welcomed. Also, the Sibford Ferris Manor development, which whilst not technically within the Gower Parish is of considerable local interest, will be a topic following enquiries which have been made. The subjects of Affordable Housing and Oxfordshire County Council's Review of Subsidised Bus Services will also be discussed as will Highway matters following a visit by the County Council's Deputy Engineer.

HOMŒOPATH

Sheila Job LCH

Consultations by appointment

Family budget scheme available

For details please telephone

01295 780468

Fire Lighting Wood

For Sale

£2 per big bag

Call in anytime and ask

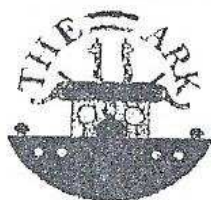
for Mick Canning, at

The Old Malt House,

Sibford Ferris 780321

Tel; 01295 780321

Children's Day Nursery, Epwell



- Full day care for children 2½ to 5 years
- Full and part time places
- Open Monday to Friday 9.00am - 4.00pm.
- Excellent Ofsted Report

The nursery provides excellent opportunities for children to explore and learn at their own pace under the guidance of trained, experienced and caring staff.

For further information ring Julia

Tel (01295) 780580

Bed & Breakfast

AGDON FARM

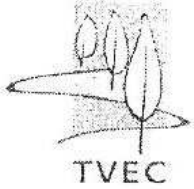
Nr Brailes

Comfortable rooms

in old stone farmhouse

Tel: Maggie Cripps

01608 685226



The Big Green Insulation Scheme heats up
Did you know that with better insulation you could save
up to £100 a year on your home energy bills?

Insulation is the new heating

There needs to be a drastic reduction of the current levels of harmful emissions, which are thought to be responsible for Global Warming. The average house produces 11 tonnes of toxic gases through energy use, whilst losing half their heat through walls and roofs. Proper insulation is a step towards reducing heat and financial losses, and is something that everyone can do. Therefore, your local council has teamed up with London Energy to bring a special discounted insulation offer to all home owners in the District. This offer may allow savings of up to £100 a year for some homeowners with insulation discounts of over 50% the normal installation price. These measures should last the lifetime of the building. They require no maintenance or adjustment to generate energy saving. What does the scheme cover?

- Cavity Wall Insulation - this is straightforward, non-disruptive and could save you £70-£100 a year off your energy bills - Not bad for an investment of £175 for a typical gas-heated 3 bedroom semi (Energy Saving Trust estimate).
- Loft Insulation - everyone knows heat rises, but did you know that 25% of your heat could be escaping through the loft? By laying 250mm (10 inches) of insulation you could save up to £45 a year off your energy bill (Energy Saving Trust estimate) and, under this scheme, the work would typically cost £125.

Who is eligible?

All owner-occupiers are entitled to benefit from the Big Green Insulation Scheme. Householders receiving income related benefits or on low incomes may qualify for free insulation works.

What do I do next?

The Scheme is managed by Thames Valley Energy Centre which is a not for profit organisation funded by your local Council and the Energy Saving Trust to encourage householders to save energy. If you wish to take advantage of this offer, please call the staff at Thames Valley Energy Centre on

0800 107 0047

Bed & Breakfast or Self Catering
Self Contained & Over Looking Garden

'THE LOFT'

Forge House

Swalcliffe

Comfort & Privacy

Contact Carole Ralph

Tel/Fax: 01295 788677

Mysite.freeserve.com/the_loft

NOAH'S ARK
PAINTING
COMPANY

Inspiring a generation to say **NO** to magnolia!

EVERY FORM OF

**INTERIOR AND EXTERIOR
PAINTING AND DECORATING**

01295 257785

Approved by **DULUX**

SIBFORD TOTS AND BABES

Summer term 2004

Decorating eggs, eating biscuits, visiting Cotswold Farm Park, making father's day boats, meeting new friends, making sun glasses, reading books, entering the village fayre art competition, eating biscuits, playing with play dough, blowing bubbles, having a mini fashion show - well a clothes sale, playing with toys, eating biscuits, making wonderful if loud music, running games at the village fayre, eating biscuits, playing with lots of toys and singing songs.

The above are just some of the fun activities we shared together during the term, many thanks to the all who helped make our sessions such a success.

We meet every Tuesday during term time at Sibford Gower Village Hall in the small hall from 10.30 until noon.

For more information please contact

Phillipa on 01608 686918 pippawatts@hotmail.com Or

Joanne on 01295 788433 Jlovegrove@waitrose.com

David Randall



Fully Insured Est. 1989


TREE WORK SPECIALIST

● Tree Work All Types <i>Crown Thinning Reduction Pruning / Re Shaping</i>	● Hedges <i>Reduced / Trimmed</i>
● Stump Grinding Service <i>Minimum ground Disturbance</i>	● Wood Chip Mulch <i>Supplied</i>
	● Garden Fencing All Types <i>Supplied & Erected</i>

Free Quotes & Friendly Advice

01608 738109 / 07831 571176

22 The Glebe, Hook Norton OX15 5LD



FOLLY FARM BACK PAIN CLINIC

ACHES & PAINS?

I can help you!

Just visit the new clinic near
SWALCLIFFE

Contact - John McArthur
DC, BSc (Chiropractic)
McTimoney-Corley Practitioner

TEL: 077 40404 678
OR: 01295 788774

Dear Editor,

With the departure of Andrew and Julia Gordon from Leasowe I feel I must write to thank them profoundly for the wonderful woodland which they have created and the permission which they have given for members of the village to enjoy it. We are extremely fortunate in the Gower to have this lovely space, and also the one being created by Margaret and Paul Hobson below Greenacres, who again encourage us to use it. In addition to the daily pleasure they give, these two spaces made life bearable for us walkers during the Foot and Mouth crisis. I am sure that I am not the only one to offer thanks and to wish Andrew and Julia well in their new life.

As for the Hobson's - long may they remain at Greenacres!

Judith Weeks

Jumble Sale

In aid of Katharine House Hospice
Saturday 23rd October 12 noon - 2 pm
At Sibford Village Hall
Adm. 20p. Raffle, Teas etc.

Jumble, books, bric-a-brac, cakes, raffle prizes etc. Can be left with Bernie Jones (780343). Or at the Village Hall on the morning of the sale. Offers of help on the day would be greatly appreciated.

FRANCIS MORDAUNT
MSSCh, MBChA
VISITING CHIROPODIST
To enquire about a Home Visit,
please telephone;
01295 730615
Professional Foot Care
In Your Own Home

**GODSWELL NATURAL
THERAPY CENTRE**
*Godswell Lodge, Church Street, Bloxham
Banbury, Oxon OX15 4ES*

Acupuncture, Alexander Technique,
Aromatherapy, Art Therapy,
Chiropody, Chiropractic,
Counselling & Psychotherapy,
Cranio-sacral therapy, Homoeopathy,
NLP, Nutrition, Physiotherapy,
Reflexology, Remedial Massage,
Reiki, Spiritual Healing,
Shiatsu, Yoga.

*Fully qualified professional therapists
For information Ring 01295 720347*

NEIGHBOURHOOD WATCH

Unwanted visitors - intruders - are a very distressing experience. They are up to every trick you can imagine. Some are just opportunists. Recent reports.

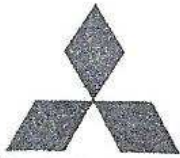
A conman acting as a Council Official asked for entry to homes in Oxford to check that all was prepared for a terrorist attack. This was after the government leaflet was distributed to all households. The Police advice is to check the identity of any official calling, close the door and check the details with the authority, do not ask the official for the telephone number.

People including children have been distracting people in bars, clubs, shops, public places with notices while purses, wallets, mobile phones have been stolen. This was also reported in the Banbury Guardian.

Entry has been made through an open backdoor and money removed while the householder was watching television.

Please be careful.

The Firs Garage



Firs Mitsubishi

HOOK NORTON, OXON
(1 mile north of village)

Phone:

01608 737349

www.firs-garage.com



Firs Daihatsu

We offer far more than the city garages at country prices.

- * Sales (New & Used)
- * 3 year unlimited mileage warranty (New)
- * Optional 12 months warranty
- * Part exchange welcome
- * Off Road demos
- * Service
- * Vinyl graphics: for vehicle graphics, signage, magnetic, banners, etc.
- * MOTs
- * Parts
- * Body work
- * Insurance estimates
- * Attendant service (Fuel)
- * Jet wash
- * Friendly service & lots more!

ESTABLISHED 1960

IT PAYS TO DEAL WITH A FAMILY BUSINESS

Where good old fashioned personal service & value still count.

The Firs Garage would like to thank the local community for their loyal support, it is much appreciated.

HOLY TRINITY CHURCH NEWS

The Harvest Festival service was held in Sibford Church on Saturday 18th September 2004 at 5.30 pm. As usual the church was magnificently decked with the most artistic arrangements of flowers, fruit and vegetables and the harvest loaf was bigger and better than ever. The parish is grateful to those who so lovingly prepare all these. Most of those present were able to move on to the Village Hall for a Bring and Share Harvest supper, about the only one unable to do so, having to return to her hard working farming husband who was still dealing with the harvest. A gathering of all ages was very amply fed and all joined in hearty community singing lead by Timothy Wimbush at the piano.

The Family Service on 12th September was lead by Catherine Berks, ably supported by her children, the theme being *Daniel the Dream Man*. Some rather difficult passages about Daniel were read by Pippa Grimston and Amy Spackman and other readings by Amelia Earle and Thomas Broe. We are very fortunate with our youthful readers, as well as our large team of grown ups, and the Family Services are always interestingly designed and well executed.

The Sibford choir will be joined by members of the Broughton choir for the Royal Society of Church Music, Oxfordshire Festival service on **9th October** at Radley College. For this, choirs join together from all over the county and there is an interesting selection of choral gems. The Chapel at Radley is an easier place in which to sing as the conductor is in the middle of the large gathering of choristers and not at the far end, which is inevitable at Dorchester Abbey, where we usually go. The organist will be Elizabeth Burgess, Organ Scholar of Christ Church Oxford, the Conductor Roger Sayer, Director of Music of Rochester Cathedral and the preacher Canon Lucy Winkett, the precentor of St Paul's Cathedral.

SIBFORD SALON
OF BEAUTY

01295 788463

Botox - Red vein removal - Hydradermie

Oxygen facials - Calgel nails

Indian head massage - loads more

Regular offers - Gift Vouchers

www.sibfordsalon.co.uk

New clients 10% discount with advert



**What do you want from
your garden?**

For: Garden Design & Advice,
Planting Plans, Sourcing
& Planting

Tel: 01608 685 314

Cathy Wallwork

Garden Design



Let me turn your garden dreams into reality..

Church Services

Society of Friends		Sunday at 10.30 am
Methodist		Sunday at 11.00 am
Roman Catholic Mass	Wroxton	Sunday at 8.30 am
	Brailes	Sunday at 11.30 am
Baptist	Hook Norton	Sunday at 10.30 am
Church of the Firstborn (Bridleways S.Gower)		Sunday at 10.30 am

Church of England, Holy Trinity, Sibford Gower.

October Sunday 3rd Young at Heart at Swalcliffe 10.30 am
 Sunday 10th Family Service 10.00 am
 Sunday 17th Holy Communion 9.30 am
 Sunday 24th Holy Communion 9.30 am
 Sunday 31st Holy Communion 9.30 am

November. Sunday 7th Young at Heart at Sibford 10.30 am



**FARMHOUSE
 BED AND BREAKFAST
 GRANGE FARM
 SWALCLIFFE**

*Enjoy warm hospitality & peaceful
 surroundings in our comfortable 18th C
 Farmhouse*

**CONTACT: BARBARA TAYLOR
 TEL. 01295 780206**

**THE VILLAGE SHOP
 HOOK NORTON**

NATIONAL LOTTERY

Grocery - Greengrocery - Bakery
 Wines - Spirits - Confectionary
 Newspapers - Magazines - Cards
 Video Rental - Bottled Gas

Open Monday to Friday
 7 am to 8 pm
 Saturday 8 am to 8 pm
 Sunday 8 am to 6 pm
 Telephone: 01608 737245



RED HORSE VALE LTD

All Types of Fuel, Coal. Smokeless. Gas.
 Logs. Kindling, Barbecue Needs
 Central Heating Oil. Oil Tanks & Coal Bunkers
 Landscape & Building Materials. Garden Centre
 & Garden Supplies. Farm & Country Sundries
 Equestrian Products. Horse & Pet Feeds

Open: Monday - Saturday 8am - 5pm
 Windmill Farm. Banbury Road (A422).
 Oxhill. Warwickshire CV35 0RL
 Tel: 01926642832
 Fax: 01926 642 853

*Reflexology
 Remedial Massage*

Elizabeth Webber
 MAR.LCSP (Phys)
 12 years experience

Godswell Natural Therapy Centre
 Bloxham, Banbury
Tel: 01295 - 788101

Sibford Bus Services

Free Bus Service

To Banbury Thursdays October 7th & 21st

Departs 10 am

To Chippy Wednesdays October 13th & 27th

Returns 12 noon

Pick up points are; The Colony, High Meadow, Cross Roads, Village Hall.

Cherwell Villager 55 Sibford ~ Banbury

Wednesdays Only	Outward	Return
Sibford Gower	9.55 am	1.55 pm
Sibford Ferris	9.57 am	1.53 pm
Hook Norton	10.15 am	1.45 pm
Bloxham	10.35 am	1.15 pm
Banbury	10.50 am	1.00 pm

Cherwell Rural Dial-A-Ride Scheme

A mini bus with tail-lift to take **elderly or disabled people** and escort to Banbury (max fare £1.20) Door-to-Door service. Book at least one day in advance. Operates on **WEDNESDAYS ONLY**.

Phone 263777 for more details.

BUS 480 - Times from 13 April 2004 - Mondays to Saturdays

From Banbury towards Shipston

	GA	CH	GA	GA	CH	GA	CH	GA
Banbury Bus Station dep.	08.45	10.50	11.45	13.45	14.45	16.10	17.10	18.10
SIBFORD GOWER School	09.10	11.15	12.10	14.10	15.10	16.35	17.35	18.35
Shipston, Pettifers Garage	09.31	11.36	12.31	14.31	-----	16.56	17.56	18.56

From Shipston towards Banbury

	Sats				M-F					
	CH	GA	CH	CH	GA	CH	GA	GA	GA	CH
Shipston, Pettifers Garage	6.55	7.45	8.45	-----	9.45	11.45	12.45	14.45	17.10	18.10
SIBFORD GOWER School	7.20	8.10	9.10	9.10	10.10	12.10	13.10	15.10	17.35	18.35
Banbury Bus Station	7.45	8.35	9.35	9.35	10.35	12.35	13.35	15.35	18.00	19.00

Buses serve Sibford Ferris two minutes before the times shown towards Shipston and two minutes after the time shown at Sibford Gower towards Banbury.

Notes: Sats = Saturdays only. M-F = Mondays to Fridays only.

GA = Operated by Geoff Amos. CH = Operated by Cheney Coaches.

Both companies will operate most journeys, where possible, by low floor wheelchair accessible vehicles.

Sorry. No services on Sundays or Public Holidays

For complete times at all of the intermediate places that are served by 480 please see new timetables on bus stops from 13 April or available from bus drivers beforehand.

Calendar of Events

October

- Sat 2nd Garage Giveaway in Swalcliffe 10 - 1 pm p9
Sun 3rd Village Hall Market p6
Mon 4th Sibford Ferris Parish Council Meeting 7.45pm p12
Tue 5th Friendship Club meeting in the Village Hall p15
Tue 5th Moving away from Landfill CDC meeting p15
Wed 6th Mobile Library in Sibfords and Burdrop (2.40 - 4.25pm)
Wed 8th Horticultural Society AGM & Winter Colour V. Hall 8 pm p5
Tue 12th W.I. '50 Years in the life of a Nanny' p8
Fri 15th Deadline for Transport Needs Survey p10
Sat 16th Table Tennis Practice Nights start p7
Sat 16th Bruce Boardmans New York Café Band. V. Hall 7.30pm p5
Sat 16th North Cotswold Chamber Choir at Deddington 7.30pm p9
Sun 17th Village Hall Market p6
Tue 19th Friendship Club visit to Heathrow Visitor Centre p15
Tue 19th LEO Club meeting p13
Tue 19th Deadline for contributions to the November Sibford Scene p6
Wed 20th Mobile Library in Sibfords and Burdrop (2.40 - 4.25pm)
Wed 20th Quiet Day at Handywater p3
Thu 21st Sibfords Society talk 'Village History' 8pm V.Hall p7
Fri 22nd Sibford Gower Parish Council Meeting 8 pm Primary School p16
Sat 23rd Jumble Sale. Village Hall 12 noon. P-19
Wed 27th Coffee Morning at Westerways. 10 - 12 noon p4
29 - 30 - 31 Cottage Crafts in Tadmarton p11

Cover picture - Sibford Gower Crossroads

Sibford Scene

Editor; Adrian Lamb. Grounds Farm, Sibford Ferris. 780380

e-mail adrian.lamb@care4free.net

Treasurer; Timothy Wimbush, The Rectory, Acre Ditch, S.Gower
780555

Advertising; Ivor Hopkyns, Elmridge Farmhouse, Sibford Gower,
Banbury, Oxon. OX15 5RT. Tel 788367