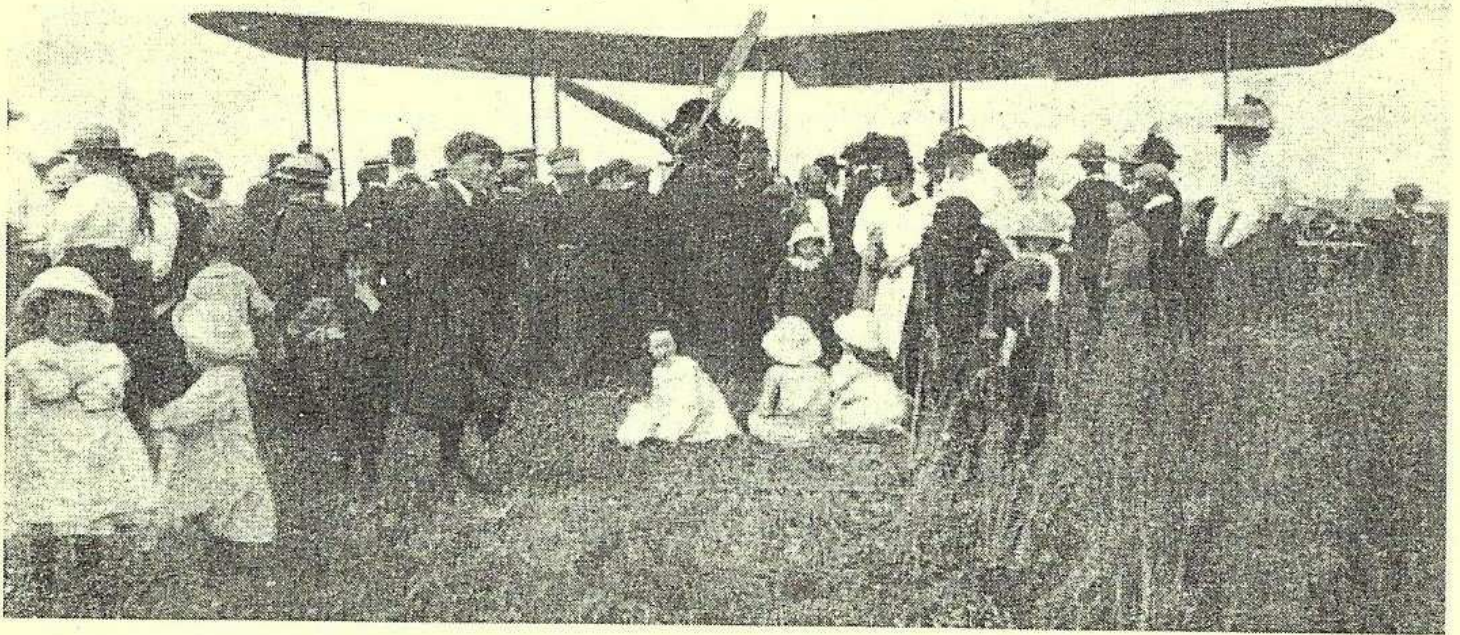


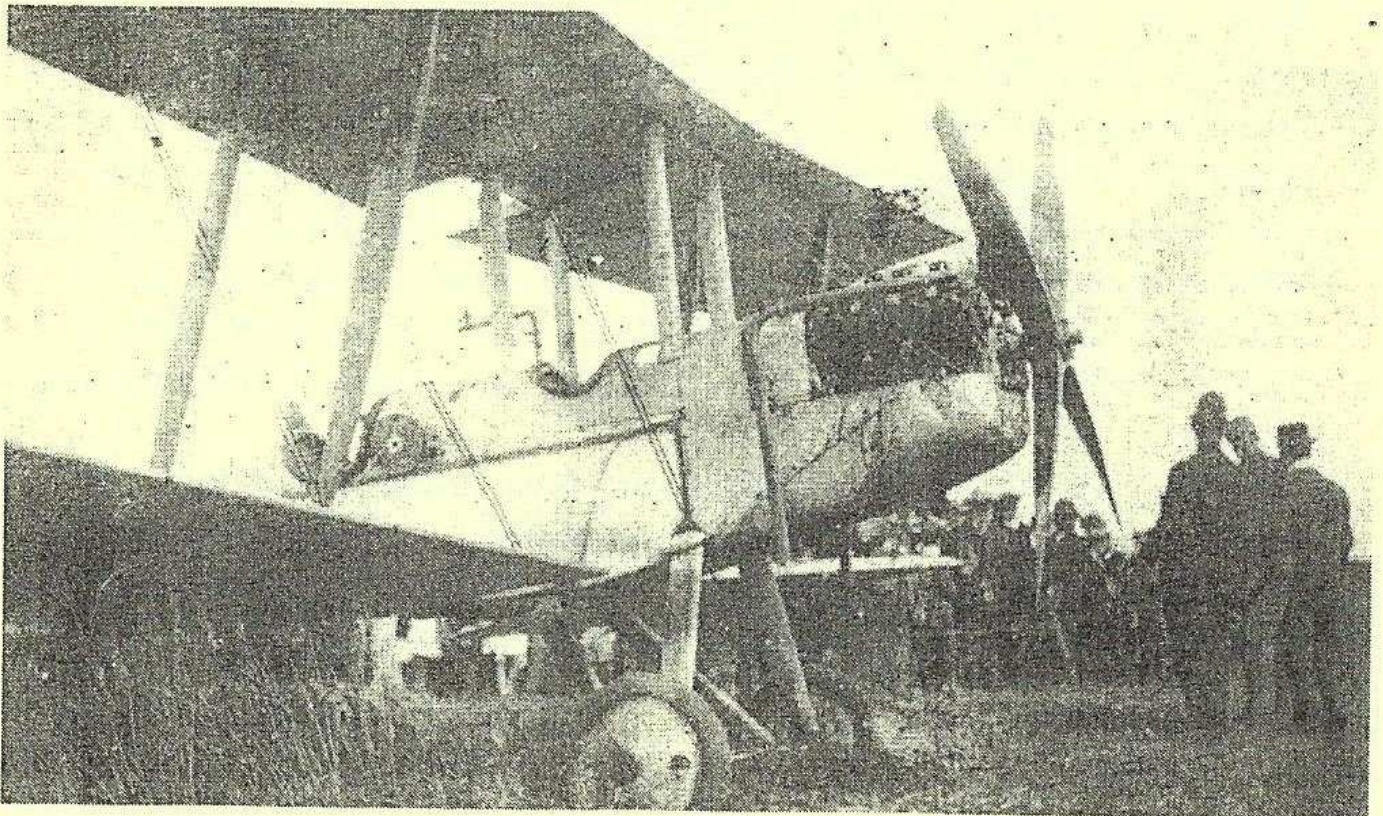
Sibford Scene



April 2003

No. 252

This aeroplane, piloted by 2nd Lt. Arthur Crisp landed in a field of oats near Sibford Heath in 1916. It drew quite a crowd of spectators many of whom may not have seen an aeroplane before let alone on the ground. A way had to be cut through the crop to allow it to take off again.



Nature Notes

Feb. 20th As a child I was told that badgers spent the winter in hibernation which I doubt was ever true but there were so few around then that we were unlikely to disprove it. Now things are very different. On a round trip to Ratley this evening, with the temperature around freezing point, we saw four badgers one of which had just been killed by a vehicle.

Feb. 22nd Neighbours across the road asked me over to see a pair of siskins on their peanuts.

Mar. 8th The new seat by Woodway Road is sited for the view but it is also in a good spot to see and hear farmland birds like skylarks, yellowhammers and linnets. It might be a good place for a picnic where the children could play 'spot the skylarks'.

Mar. 11th With two bumble bees on the wing and frogspawn in our pond spring must be here.

Mar. 15th A few days ago I watched a great spotted woodpecker as it moved up and down a spur, left when a branch broke off, testing it as a drumming site. Having started with a loud drum it tried a few more spots which gave out softer lower notes finally returning to the original spot which he has since been using frequently. The collared dove that was sitting on eggs a month ago has given up leaving an unhatched egg which must have got too cold on those freezing nights to have any chance of hatching.

Mar. 16th A pair of bullfinches have been coming to our bird table each day lately eating crumbs and the bits of peanuts that fall when the woodpecker is feeding.

Mar. 17th This glorious sunny day brought out good numbers of insects. Honey bees concentrated on the heathers, bee-flies on the pulmonaria and bumble bee queens were looking for nesting sites. Overwintered brimstone, peacock, tortoiseshell and comma butterflies all visited our garden during the day. I looked out for a holly blue but had no luck.

Mar. 18th As yet we are getting a very poor dawn chorus and I am wondering whether the songbirds are nervous of the three pairs of rooks that are nesting in the trees above them or are they suffering from lack of sleep because the rooks will talk for much of the night.

North Oxfordshire Guild of Weavers Spinners and Dyers Programme 2003

April 15th 'Millenium & Commonwealth Tapestries' - Lizzie Owen

May 20th 'The Great Wheel' Clare King - Talk and Demonstration

June 17th Craft Sales tables - Bring and Buy.

Opportunity to find just what you need.

July 15th Wool Spinning Forum. 'I did it my way'

Bring wheel & share ideas.

Sept 16th 'The Pearl Button Man' - George Hook

Oct 21st Activity Evening - Warping a Loom

Nov 18th A.G.M. & Members Exhibition of Work.

Meetings held in Hook Norton Baptist Schoolroom at 7.30pm.

New members are always welcome and tuition is available is wished.

Annual Membership £14. Visitor £2.50

Contact Douglas Ward 01869 81072

Rose Kirkcaldie 01295 253789



Ann Woolgrove
FABRICS, CURTAINS & SOFT FURNISHINGS

Handsewn & interlined curtains & pelmets our speciality
Roman & Roller blinds
Customised design service and home consultancy
Every kind of fabric from many leading manufacturers
Decorative Poles, Tie backs & Trimmings

<i>Loose Covers and Cushions</i>	<i>Lampshade making</i>
<i>Wallpapers & Interior Decoration</i>	<i>Custom made Bedspreads & Headboards</i>

Tel/Fax: 01295 788145



Oddjob

**CARPENTRY
PLUMBING
ELECTRICS
HEATING INSTALLATION
KITCHEN & BATHROOM FITTING
BUILDING WORKS
SECURITY**

FOR A COMPREHENSIVE AND RELIABLE LOCAL SERVICE
HUGO SEELY 01295 780355
FREE NO-OBLIGATION ESTIMATES
No job too large
Excellent local references available



News from Playgroup

This month lots of exciting parcels have been delivered to the Hall. Dressing up clothes, Paints and Puppets have all been unpacked and played with! Our shopping spree continues and everyone is enjoying all our new equipment.

At the end of term we are waving a cheery goodbye to Ellie-Rose, Harry, Jessica, Lucy G, Lucy T, Riannon, William F, and William O - who are all starting school.

We will also be saying goodbye, good luck and good wishes to Michelle. Thank you Michelle for laughing, playing, tear mopping, story telling and for being a brilliant assistant supervisor. We will miss you!

For more information about playgroup please contact Julie on 780998

Happy Easter everyone.

Sibford Stores & Post Office

Sibford Ferris

OX15 5RG

Tel: 01295 788317 / 788348

Your Local Convenience Store

Your local newsagent, we deliver newspapers and magazines 7 days a week to all the surrounding area, always a wide selection of newspapers and magazines available in the shop. Place your regular order today

Bread, cakes and savouries baked on the premises throughout the day.

We are your local National Lottery Agent

Photocopying, fax and mailing service available on the premises.

Agents for Dry Cleaning and Laundry.

Chilled & frozen foods, groceries, cigarettes, beers, wines and spirits, fresh fruit & vegetables, pet foods, medical and toiletries and lots, lots more.....

Telephone your grocery order for free local delivery 7 days a week.

OPENING HOURS

Monday to Saturday 5.30am to 6.00pm

Sunday 5.30am to 1.00pm

QUIET DAY AT HANDYWATER FARM MONDAY 28th APRIL

The first of this season's days set aside for meditation and quiet reflection will focus on the life and work of George Herbert. Rector of a tiny parish in Bemerton near Salisbury for only three years before his early death in 1633, George Herbert wrote devotional poems that have inspired generations of those in search of spiritual nourishment. Four of his poems are among our best-known and favourite hymns.

If you are interested in finding out more about this saintly man and his work, you are welcome to Handywater for all or part of the day. There will be four 10-15 minute sessions exploring Herbert's life and work, at 10am, 12.15, 1pm and 2.45, with plenty of time in between to read and reflect, meditate and just 'be'. Please bring a contribution to a bring and share lunch, and a rug and cushion if you want to be warm and comfortable in the garden on a cool day. If you would like directions to Handywater, or any further information about the day, please ring Sue on 01295 788770.

FRANCIS MORDAUNT
MSSCh, MBChA
VISITING CHIROPODIST
To enquire about a Home Visit,
please telephone;
01295 730615
Professional Foot Care
In Your Own Home



The Bishop Blaize Inn
17th Century Freehouse
Burdrop, Sibford Gower
Tel. (01295) 780323

Sam & Sheila welcome you.
Enjoy our well-kept traditional ales
Also our new menu of fine traditional fayre
Don't forget, Monday night is take-out night
Fish or double jumbo sausage and chips

Now Serving Traditional Sunday Roast.

Roast Beef, Yorkshire Pudding,
Roast potatoes, New Potatoes,
and Three Veg.

Book Early To Reserve Your Table.

Please Note...our kitchen will now be closed Sunday evenings until March.

The Sibfords Society

The walk led by Robin Spicer was well attended on a cold morning on 1 March and we set off at a brisk pace to warm up, going down to Temple Mill Farm and then left towards Hook Norton. We then turned off along a very muddy path towards Swalcliffe Common, then making our way back to the Crabtrees home through Sibford School. Ann Spicer provided us with very welcome hot soup and the collection taken enabled us to send £27 to Katharine House Hospice.

Our AGM took place on 20 March and afterwards Norman Nash had prepared slides for a quiz of unusual views of the Sibfords and it proved very difficult to recognise just where he had taken the photos. This just proved to everyone how unobservant we are when walking around our own area.

The next meeting is on **17 April at 7.30 pm** in the Village Hall when Audrey Linkman will talk about interpreting Victorian Portrait Photography, pointing out how much information can be gleaned from clothes and surroundings. She invites us to take along any Victorian photos we may have, so that she can discuss these as well as the ones she brings with her.

Don't forget the
Village Litterblitz
Saturday 5th April
9am at Lane End Corner in the Ferris
10am at the Village Hall in the Gower

The Gate Hangs High Inn

Hook Norton
Oxfordshire OX15 5DF
Tel: 01608 - 737387

Home Cooked Food daily Lunchtimes & Evenings
Traditional Sunday Lunches
Hook Norton Real Ales
Patio Garden Car Park

Proprietors: Stephen & Karen Coots-Williams

Food is served Mon - Sat 12 - 2 & 6 - 10
Sunday 12 - 2.30 & 7 - 9.30

Contributions for the
May
Sibford Scene
to the Shop or Editor
by
April 22nd

The Sibford Scene Brown Envelope Appeal

Once again those of us involved in bringing you your copy of the Sibford Scene are asking for a little of your money to help us cover the costs involved.

Our income in 2002 was £1,942.80 with £781.00 from advertisers and the balance (£1,161.80) from the Brown Envelopes and the donations from the clubs and societies who contribute articles for publication and the support we receive from the Parish Councils and the Charities.

Our expenses for the year were £1,687.39 being paper purchase and printing costs. The £255 surplus for the year has been added to the reserves for future copier or printer replacement. No one involved in the production or distribution of the Sibford Scene gets paid anything other than out of pocket expenses.

The actual cost of producing 10 issues a year for every household in the villages is £4 per house. Once again we are suggesting a £3 donation towards these costs. The envelopes can be left with the Treasurer or put into the collecting box in the Post Office or if you feel adventurous delivered to the Editor.

Usually we get less than one in three of the envelopes back so if you have not contributed in the last year or two please make the effort to support our efforts.

As Editor, I get very little feedback about what I should or should not be putting in the Scene so any comments about content or lack of it would be most welcome as well. One question which comes up quite often is how many adverts we should have and how we should select which we include. Their inclusion helps pay the bills but it also increases the amount of printing which has to be done. Is the balance of adverts to text about right? Should we be looking for more articles and if so on what subjects? What would you like to see in your parish magazine? Please let me know your views.



**FARMHOUSE
BED AND BREAKFAST
GRANGE FARM
SWALCLIFFE**
*Enjoy warm hospitality & peaceful
surroundings in our comfortable 18th C
Farmhouse*
**CONTACT: BARBARA TAYLOR
TEL. 01295 780206**

SIBFORD TOTS & BABES

Tuesdays (during term time) 10 - 11.30 am,
Sibford Gower Village Hall (in the new small hall)

We have recently extended the toy library
to include toys for 3 to 5 year olds, in addition to the 0 to 3's.

Toys are available to borrow for a small weekly fee.

For more information, please come along to a session
or telephone Anita Spencer on 788557

Jumbo Jumble Sale

Saturday April 5th at 2pm

In the Village Hall

In aid of Holy Trinity Church

Entrance 20 pence.

Please come and support this event.

Erica Wimbush 780555

Jane Holliday 780500

Part Time Job Opportunity

Playgroup Assistant

8.30-12.30 4/5 days per week

term time only

Please contact Julie on 780998

for further information

The Stag's Head, Swalcliffe

Tel: 01295 780232

Our Butcher's the best

Our Baker's not bad either

And we're working on the candlestickmaker!

**Listed in the CAMRA Good Beer Guide
and The Good Pub Guide**



Proprietors: Julia and Ian Kingsford

Fabulous Food

Superb Real Ale and wines

TRADITIONAL SUNDAY ROAST LUNCH

PIQUANT DISHES A SPECIALITY

**WE CURRENTLY HAVE VACANCIES FOR
WAITING, & KITCHEN STAFF. PLEASE
TELEPHONE JULIA FOR DETAILS.**

COMPTON LANE NURSERIES

Little Compton

Nr. Moreton-in-Marsh

Tel:- 01608 674578

We offer an exciting and diverse range
of herbaceous perennials, many of
which are not widely available. A
sales area surrounded by planted bor-
ders offers interest and ideas all year
round. The alpine garden allows visi-
tors to see some real gems growing in
the open and under glass and houses
the Joe Elliot collection.

As featured on Gardeners World.

Open Tuesday to Saturday

10am to 5pm. February to

October

1st the Sibfords Scouts Group AUCTION OF FAVOURS

Our thanks to everyone who supported our Auction of Favours and Promises at the Village Hall at the end of last month. Not only for the incredible variety of favours and promises given, but also to everyone who came along on the evening and bid so generously. We made in excess of £4,000 during the evening, which will pay for a new equipment trailer and guarantee our financial stability for some time.

Paul Clayson, our auctioneer for the evening, put the FUN into Fundraising

John Edward Christopher Hill. (6.2.1912 - 23.2.2003)

It is with the deepest of regrets that I report the death of Christopher Hill. As some will know, Christopher was (and always will be) the greatest historian of 17th century history and alongside his beloved wife Bridget, made a formidable couple. Both a great loss to society.

Bernie Jones

AROMATHERAPY &
MASSAGE
INDIAN HEAD MASSAGE
VIRGINIA BENNETT SRN
MHAF
Home Visits Available
Tel 01295 780373

SIBFORD SALON
OF BEAUTY

01285 788463

Botox - Red vein removal - Hydradermie

Oxygen facials - Calgel nails

Indian head massage - loads more

Regular offers - Gift Vouchers

www.sibfordsalon.co.uk

New clients 10% discount with advert



**RICHARD WALLINGTON
BUILDER
BLOCK PAVER DRIVES A SPECIALITY
ALSO EXTENSIONS, PATIOS
FENCING ETC.
HIGH QUALITY WORK, FREE ESTIMATES.
01295 780705 0771 4613173
(SIBFORD GOWER) (MOBILE)**

TREES

WE'RE THERE FOR TREE CARE

All aspects of tree care undertaken
Specialising in reduction/removal of
trees in confined spaces

Supplier of logs & chippings

Over 20 years experience

Fully Insured

For a free quote and a chat please
contact:

Arthur White (The Tree Chap) 01295 788549

142785

Calling All Young Cricketers

The 2003 season will soon be upon us and Sibford Cricket Club is well underway with its preparations. Indoor net practice has been arranged at the Sibford School Sports Hall on 8, 10, 15 and 17 April from 7.00pm. Two practice matches towards the end of April are also being arranged before fixtures start in earnest in May.

The club is actively seeking teenagers and senior players to increase its playing membership. Opportunities will be available most weekends for teenagers in particular as we have a full Saturday league and Sunday friendly fixture list from May to August. Any prospective player who is interested in playing should come along to the nets on the dates above or contact:

Kevin Peachey (Sunday Captain) - 07974 420636

Simon Chard (Saturday Captain) - 07947 027367

Ian Davies (Chairman) - 01926 640974

GODSWELL NATURAL THERAPY CENTRE

*Godswell Lodge, Church Street, Blaxham
Banbury, Oxon OX15 4ES*

**Acupuncture, Alexander Technique,
Aromatherapy, Art Therapy,
Chiropody, Chiropractic,
Counselling & Psychotherapy,
Cranio-sacral therapy, Homocopathy,
NLP, Nutrition, Physiotherapy,
Reflexology, Remedial Massage,
Reiki, Spiritual Healing,
Shiatsu, Yoga.**

*Fully qualified professional therapists
For information Ring 01295 720347*

What do you want from your garden?

For: Garden Design & Advice,
Planting Plans, Sourcing
& Planting

Tel: 01608 685314

Cathy Wallwork

Garden Design



Let me turn your garden dreams into reality..

CHIROPRACTOR

John Mulley

DC MCC BAAC

AM Clinic, Banbury: 01295 262100
Bicester Chiropractic Clinic: 01869 321166
Or: 01295 780629

McTimony-Corley

Also treats animals

DAVID MALONE

HIGH CLASS PAINTER AND DECORATOR

Acre Ditch
Sibford Gower
Banbury
Oxfordshire OX15 5RW
Tel: (01295) 780546



CITB REGISTERED

Broken Colour Effects and Paperhanging a Speciality

W.I. MEETING - 11th MARCH.

Very few members were present for this, the annual general meeting. Names were taken for the Group Meeting on the 14th April at Wigginton, the half-yearly meeting at Oxford Town Hall, and the Garden Event in Sibford on the 28th June, when there will be Open Gardens and teas in the village hall. One Sibford member is to go to the NFWI Annual Meeting at the Albert Hall on 11th June. There are also to be 75th birthday celebrations, involving a lunch on Tuesday the 28th October. The financial statement for the year was presented and adopted. Yearly competition :- Prizes were awarded to Glennis Hardman, Rosalind Pearlman and Maureen Warden for the most competition points gained throughout the year. The President read out her report, in which she expressed much gratitude to all officers and her thanks for the support she had received. Then came the nomination for the new President, and Glennis Hardman accepted the office. The other officers will be decided upon at the next committee meeting. There was a very full stall for the Bring and Buy and £42 was raised. Tea and cakes were served by Gwen Whitehead and Audrey Taylor.

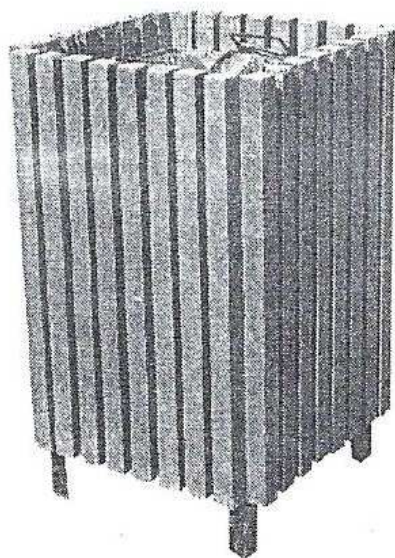
At the next meeting, which will be on **Tuesday, April 8th**, the speaker will be Barbara Gray, whose talk is entitled "Four Weddings". Barbara is a very good speaker and visitors will be very welcome to this meeting. The competition will be for a corsage of spring flowers.

MW

Sibford Ferris Litter Blitz

This years spring clean will be on
Saturday April 5th.

Will anyone willing to help be at Lanes End Corner (Manor crossroads) at 9.00 am where bags etc will be available. If you are unable to do it at that time please ring Arnold Lamb on 780357 to say which stretch of road you would do at another time.



CAPE ESCAPES

Our summer has continued with glorious hot weather and here we are in March with the first signs of Autumn as the trees start to turn colour. We won't think of winter just yet though.

We have been out and about again with our various visitors and I thought I'd share a few of our expeditions with you. We have discovered two delightful places not far from Cape Town which make a nice day out. One is a small town called Genadendal which claims to be the oldest mission station in South Africa. It was founded by a Moravian missionary called Georg Schmidt in 1737. His work was mainly among the native Khoi (Hottentots) who were virtually on the verge of extinction, he taught them to read and write and formed a small Christian congregation. Schmidt then got into trouble with the Cape Dutch Reformed Church as he started to baptise his converts and he was not an ordained minister. So after seven years he left the country.

However, after several years the Moravians returned and resumed the work that Schmidt had started. They encountered various difficulties with the authorities and the local farmers but the settlement flourished and at one stage Genadendal, which means the Valley of Grace, was the second largest settlement in the Cape Colony after Cape Town. In the early nineteenth century, after a visit from the Governor at the time, it was decided to make a more permanent settlement and create jobs to become a self-sufficient community. During this 'Golden Age' the place thrived and it became a centre for local industry and training. However, because of its 'coloured' status the Teacher Training College, which had been established there, was closed down and various other apartheid policies led to its general impoverishment and stagnation.

In more recent years, money from overseas has helped to revive many of the old buildings associated with the original mission and now it is possible to visit a very well stocked museum, the old mill which is now working again and of course the church which still forms the centre of life in the town. It's a peaceful and a very surprising place to find tucked away at the foothills of the Overberg.

Just up the road is another small town called Greyton which is fast becoming a place to stay, permanently or for a short break, if you want to get away from it all. With lots of great coffee shops, lovely English style gardens and gentle walks in the hills or by the river it's a very relaxing venue. We also visited Knysna again in February and explored the forest behind this popular seaside town. It's a great place for walking and discovering the evidence of gold mining that boomed for a short time in the region. Some of the original mine workings have been restored along with the machinery they

used to extract the gold from the ore. It's amazing how those early pioneers managed to get this huge, heavy machinery to such a remote and difficult location. Most of it was imported from England and still bears the name of the manufacturer and town where it was made.

From Knysna we went to Oudtshoorn which also boomed at one time because it became the centre for the ostrich trade. Located in the Karoo (semi desert) the ostriches thrive in the hot, dry climate. Alfalfa also grows well which is the staple diet of the birds. Although the boom days are over now that the fashion for the feathers has died, the birds are now farmed more for their meat and their skin - nice handbags!

From there we travelled along a spectacular road called the Swartberg Pass, a dirt road that winds its way up and over the mountains. It is certainly a breathtaking sight but not for the faint hearted! We ended up in a small town called Prince Albert which is very quaint to say the least. We stayed in excellent B&Bs along the way and met some great people as usual.

No more trips have been planned just yet but I hope you've enjoyed these latest journeys with us.

Pat and Steve Bates

The Firs Garage



HOOK NORTON, OXON
(1 mile north of village)

Phone:

01608 737349

01608 737641



Always a good range of used 4x4's fully serviced with warranty

WE OFFER YOU

- * Sales (New & Used)
- * 3 year unlimited mileage warranty (New)
- * Optional 12 months warranty
- * Part exchange welcome
- * Off Road demos
- * Service
- * Vinyl graphics: for vehicle graphics, signage, magnetic, banners, etc.
- * MOTs
- * Parts
- * Body work
- * Insurance estimates
- * Attendant service (Fuel)
- * Car wash
- * Friendly service & lots more!

Sales & Forecourt OPEN:

Mon-Fri 8am-6pm, Sat 8am-5pm, Sun Closed
(out of hours sales please phone for an appointment)

Parts OPEN:

Mon-Fri 8am-5.30pm, Sat 8.30am-12.30pm, Sun Closed

ESTABLISHED 1960

IT PAYS TO DEAL WITH A FAMILY BUSINESS

We offer far more than the city garages at country prices.

Sibford Gower Annual Parish Meeting

The Annual Parish Meeting will be held in the main hall of Sibford Gower Endowed Primary School on Thursday, 1st May 2003 commencing at 7,30pm. It is hoped that representatives of the County Council's Highways Department and Thames Valley Police will be available to attend and answer any relevant questions. Our County and District Councillor, George Reynolds, has also been invited but his attendance will depend upon availability within what is necessarily a very busy schedule. The Annual Parish Meeting is a chance to meet with the members of the Parish Council and to learn about their work during the year since the previous meeting. It also gives the opportunity to raise any matters of concern regarding the village in which we live. So, a cordial invitation is extended to all to be present and the Parish Councillors look forward to seeing you there. The next regular Parish Council Meeting will take place at 8pm on Friday, 16th May 2003 in the usual room in Sibford Gower Endowed Primary School.

Roving Recycling Service The following message was received on 26th February 2003 from Cherwell District Council's Amenity Services Officer:- 'You are probably aware of the Council's difficult financial position and its need to identify and implement cost savings in the services provided for the financial year 2003/4 and beyond. In view of the high operational costs of the roving recycling service and the low tonnage of recyclable materials collected, I regret to inform you that the Council has decided to terminate the service with effect from the 31st March 2003. There are already 40 permanent recycling sites located throughout the district where most materials can be recycled, including glass. You will also know that the District Council currently provides a door to door recycling service for paper waste via the blue box scheme and later this year it is proposed to extend this service to include other recyclable materials such as cans, aluminium, plastics and cardboard..'

GOWER LITTERBLITZ

The Annual Litterblitz will take place on Saturday, 5th April 2003 and volunteers are sought to give an hour or so of their time to help with the work of clearing litter from the verges of the village. Sacks and protective gloves will be provided. We will meet at Sibford Village hall at 10am when Robin Spicer will allocate the areas which require our attention. The Parish Council hopes that the occasion will receive the enthusiastic support as has been given in previous years and looks forward to seeing you on the 5th of April to help with this very worthwhile exercise. Do come along and help in keeping Sibford Gower an attractive village.

The Parish Councils of Sibford Ferris and Sibford Gower

Publication Schemes for Parishes Freedom of Information Act 2000

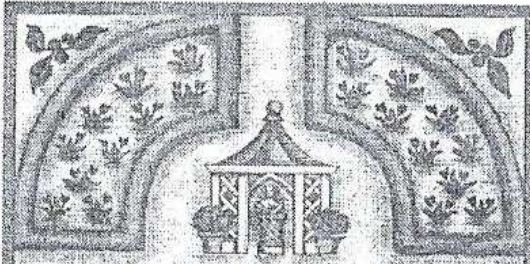
The requirements of the Freedom of Information Act 2000, s19(1) call for Town/Parish Councils to adopt a Publication Scheme and have it approved by the Information Commissioner. Accordingly, each of the Parish Councils of Sibford Ferris and Sibford Gower has passed a resolution at their Special Council Meeting and Council Meeting respectively in December 2002 as follows:- In accordance with the requirements of the Freedom of Information act 2000, s19(1) this Council resolves to adopt the model publication scheme for local councils (core classes only) The core classes are:

1. Council internal practice and procedure
2. Code of Conduct
3. Periodic Electoral Review
4. Employment practice and procedure
5. Planning documents
6. Audit and Accounts

The Information Commissioner has approved the schemes and information in respect of the core classes will be available from the respective Parish Council Clerks with effect from 28th February 2003. There may be a charge to cover photocopying, postage etc for information provided.

Mrs Sally Wass
Clerk to Sibford Ferris Parish Council
Tel: 780589

Peter Hardman
Clerk to Sibford Gower Parish Council
Tel: 780391



CREATIVE EARTH

For
**KNOWLEDGEABLE
AND HELPFUL
GARDEN
MAINTENANCE**

Contact:
Sarah Martyn
at CREATIVE EARTH
TELEPHONE: 01295 788819
MOBILE: 07866 716 748

THE VILLAGE SHOP
HOOK NORTON
NATIONAL LOTTERY
Grocery - Greengrocery - Bakery
Wines - Spirits - Confectionary
Newspapers - Magazines - Cards
Video Rental - Bottled Gas
Open Monday to Friday
7 am to 8 pm
Saturday 8 am to 8 pm
Sunday 8 am to 8 pm
Telephone: 01608 737245

Autism and Volunteering Opportunities in Oxfordshire.

What is autism?

Autism is a lifelong disability that affects the way a person communicates and relates to people around them. Children and adults with autism are often unable to relate to others in a meaningful way. They can have a difficulty in developing friendships and understanding other people's feelings. People with autism can often have accompanying learning disabilities but everyone with the condition shares a difficulty in making sense of the world. Asperger syndrome is a form of autism, at the higher functioning end of the autistic spectrum.

Could you spare a couple of hours a week
to befriend someone with autism?

What is a befriender?

Befrienders spend a few hours a week with a person with autism or Asperger syndrome or their family. Befrienders can help break the wall of isolation for families and individuals whose lives are affected by autism. Some befrienders always spend time in the family home, others go out and about. We match volunteers and families to individuals who have something in common.

Volunteer befrienders do not have to be 'experts' in autism. We're looking for people who are friendly, reliable, willing to learn, and sensitive to the needs of others. We'll provide initial and ongoing training and support and we'll pay travel expenses too. The scheme is part of the National Autistic Society's Volunteering Network.

"Befriending is very much a two way thing - families get practical help which is flexible and informal; befrienders meet new, like-minded people, find the training fun and informative and learn a lot. It's extremely rewarding."

For more information, contact

Rachel Pike

Family Services Development. Officer - Autism

Thomley Hatt Centre,

Menmarsh Road

Worminghall

Bucks HP18 9JZ

Tel/Fax: 01844 338696 Email:

rachel@childrenintouch.freeserve.co.uk

STEEPLE ASTON COPE EXHIBITION

Oxfordshire

26th - 27th APRIL 2003

Steeple Aston Church owns an exquisite piece of medieval embroidery made in the early 14th century, probably in London. It is a cope made for a very important member of the clergy to wear for great processions, and it has been on loan to the Victoria and Albert Museum for over 100 years. Now in two pieces, it is coming home to Steeple Aston to raise money for the Church Restoration and Improvements Appeal.

Talks about the Cope

Linda Woolley, Curator at the Victoria and Albert Museum, will give two talks, entitled *The Steeple Aston Cope and English Medieval Embroidery: Opus Anglicanum*, on Monday 28th April at 10.00 and 11.00am. The cost including coffee is £10. To book, please send a cheque made out to Steeple Aston Church with a stamped addressed envelope to Mrs Edwina Kinch, Manor Farm, South Side, Steeple Aston, Bicester, OX25 4RT

Also in the Exhibition

The Cope worn by Archbishop Fisher at the coronation of HM The Queen, 5 other Copes - 18th century embroidery - Roman bracelets, Enclosures Map of 1776 and many other items of local history

Exhibition Opening Hours

Saturday 26th April 10.00am - 6.00pm Sunday 10.00am-5.30pm Entrance £5 for adults £1 for age 6-18 and children under 5 free Free leaflet ~ attractive merchandise. Refreshments in the Village Hall

Medieval Musical Mystery Play with Shadow Puppets

With the Steeple Aston Players, the Choral Society and the school choir

24th, 25th and 26th April at 7.30pm in the Village Hall

Tickets from the Village Shop or ring Margaret Mason on 01869 340485 or Sue Barber on 01869 347146

Sibford Horticultural Society

The first meeting of the year was well attended and a very enjoyable talk on Whichford Pottery was given by Sue Gale.

At the next meeting Val Bourne will be giving a talk on "Plant Legends". We hope to see a lot of you there then. The meeting starts at 8 pm on the **9th April** in the Village Hall.

Diary Dates

14th May Chris Brown - 'Alpines from here to Patagonia'.

18th June Radway Garden Club to visit Sibford gardens

9th July Visit to Kiftsgate Court Gardens

23rd August Annual Show - All readers are encouraged to have a go.



The Firs, Hook Norton, Banbury, OX15 5DD

Email graphicsdirect@aol.com

Phone: 01608 730555 Fax: 01608 730277

For all types of Vinyl Graphics & Signage.

Theresa Jack

DESIGNING PEOPLE IN A HURRY

David Randall

Fully Insured



Est. 1989

TREE WORK SPECIALIST

- Tree Work
All Types
*Crown Thinning
Reduction
Pruning / Re Shaping*
- Stump Grinding
Service
*Minimum ground
Disturbance*
- Hedges
Reduced / Trimmed
- Wood Chip
Mulch *Supplied*
- Garden Fencing
All Types
Supplied & Erected

Free Quotes & Friendly Advice

01608 738109 / 07831 571176

22 The Glebe, Hook Norton OX15 5LD



**FOLLY FARM
BACK PAIN CLINIC**

ACHES & PAINS?

I can help you!

Just visit the new clinic near

SWALCLIFFE

Contact - John McArthur

DC, BSc (Chiropractic)

McTimoney-Corley Practitioner

TEL: 077 40404 678

OR: 01295 788774

Citizen Advocacy in Cherwell & West Oxfordshire (CITAD) is in business to recruit, train, match, support and supervise volunteer citizen advocates in making one to one relationships with a person living near them who is communication-disabled for any reason. We find that, sometimes, the very presence of a volunteer advocate, who is an independent, unpaid, accredited, trained and police-checked citizen advocate in a room full of professionals discussing the future of a disempowered, vulnerable person (who may well not be present) can subtly alter everything that is said and done in that meeting - and the advocate may have said very little!

Citizen advocacy can be challenging, but also fulfilling and good fun. Ann became Sheila's citizen advocate and soon started helping her sort out several issues in her life that had previously been difficult for Sheila to contemplate and overcome herself including some medical problems: Sheila suffers from a chronic medical disorder causing her increasing pain, discomfort and limiting her mobility. She felt that she was not being taken seriously or listened to by doctors, and was repeatedly and routinely prescribed painkillers. Just one appointment with her GP, with Ann accompanied by her citizen advocate, resulted in a referral to a consultant neurologist. Whether or not anything more can be done medically to ease Sheila's situation is yet to be seen, but at least her voice has now been heard. Ann has also helped Sheila sort out some domestic help and enabled her to go on some day trips which has introduced her to other people and helped her make new friendships. Whilst improving the quality of life for Sheila, Ann has realized the value and power of citizen advocacy. Yes, citizen advocacy can be fulfilling, and sometimes - just sometimes - the breach of a damaged human right can be healed.

If you could spare an hour a fortnight to become a citizen advocate with someone living close to you who is communication disabled, we would like to hear from you. The charity's joint Co-Ordinators - Anthony Richards and June Ward - are based at 33a High Street, Witney, OX28 6HP and can be contacted on telephone 01993 704826. or on e-mail info@CITAD33a.freereserve.co.uk. For more information check us out at our Web site www.CITAD33a.freereserve.co.uk and contact us. Thank you for considering this appeal. We look forward to hearing from you.

LEO MEETING ON 18th MARCH.

It was a "full house" at Maureen Warden's on LEO night; her sitting room was jammed to full capacity. However, no-one was disappointed by the speaker, in the form of Judy Abbott. She works for the Princess Royal Trust Carers Centre (N. A W. Oxon) and told us things about them that really made us sit up and think. Most of us had no idea of the many things that were available for "carers", meaning people who care for their relatives at home. The Care Centre aims to improve the quality of carers' lives by offering information, advice and support on any aspect.

The next LEO meeting will be on the 15th April and will be at the home of Jenny Barratt, at 11 Barley Close. Jenny will talk to us and show photos about her holiday in Australia and it should be a good evening, so do try and come.

MW

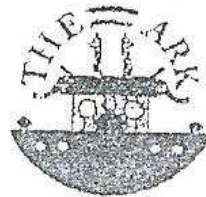
Bed & Breakfast

AGDON FARM

Nr Brailes

Comfortable rooms
in old stone farmhouse
Tel: Maggie Cripps
01608 685226

Children's Day Nursery, Epwell



- Full day care for children 2½ to 5 years
- Full and part time places
- Open Monday to Friday 9.00am - 4.00pm.
- Excellent Ofsted Report

The nursery provides excellent opportunities for children to explore and learn at their own pace under the guidance of trained, experienced and caring staff.
For further information ring Julia
Tel: (01295) 780580



BUILDING PLANS

BUILDING REGS. SUBMISSIONS

NEW BUILD EXTENSIONS ALTERATIONS

D.R. BOVILL, B.A.
PLANNING & DESIGN CONSULTANT

PRIVATE AND TRADE ENQUIRIES - PLEASE CALL
01295 780609 OR 07890 591783

HOMŒOPATH

with 4 years of training completed

Offering consultations at
greatly

reduced prices for a
limited period only

Cases now being taken for the
Licentiate of The College of Homœopathy
award

All cases treated under fully qualified
supervision

For details please telephone

SHEILA JOB

01295 780468

HOLY TRINITY CHURCH NEWS

The Annual General Meeting of the Church was held in the Village Hall on Shrove Tuesday 4th March 2003. There were 20 people present and the meeting was opened by the Rector with prayers.

Eric Payne and Ann Spicer were re-elected as Churchwardens and with the exception of Jenny Barratt who retired, the remaining PCC members were re-elected: Maureen Warden, Helen Earle, Sue Wilson, David Soden (Treasurer) and Tom Pratt. The three Deanery Synod representatives Evelyn Boughton, Erica Wimbush and Kathy Yorke (PCC Secretary) continued in office. A warm vote of thanks was passed to all those attending the PCC meetings over the year, coupled with the name of Jenny Barratt.

A report on the activities of the Council was presented and the accounts for 2002 were presented by the Treasurer: Expenditure for the year exceeded income by £2,698 despite an under-payment for the Diocesan Quota of £2,972. The PCC were discussing measures to eliminate this large and dangerous deficit and would be presenting proposals shortly to the members.

Pancakes were served after the meeting to mark the beginning of Lent. During Lent, there will be services of Holy Communion at 7.30am on all Fridays except Holy Week when a shortened Matins would be held each day at that time.

There will be a Quiet Day in the Village Hall on Saturday 29th March, beginning at 10.30 am and each Wednesday in the Rectory at 7.30 pm a study course based on St Paul's *Letter to the Galatians*. Austerity lunches in aid of charities will be held on Mondays each week in the various villages of the Wykeham Benefice.

The **Church Fete** will this year be held in the **Rectory Garden, Acreditch** on **Saturday 5th July** at 2.30pm. The **Jumble Sale** in the **Village Hall**, as previously announced will be on **Saturday 5th April** at 2.00 pm.

The Warriner Choral Society
Spring Concert now to be held on
Saturday May 10th at 7.30 pm in the
Main Hall at Sibford School

Church Services

Society of Friends
Methodist

Roman Catholic Mass

Wroxton

Brailes

Baptist

Hook Norton

Church of the Firstborn (Bridleways S.Gower)

Church of England, Holy Trinity, Sibford Gower.

Sunday at 10.30 am

Sunday at 11.00 am

Sunday at 9.00 am

Sunday at 11.30 am

Sunday at 10.30 am

Sunday at 10.30 am

April

Fri 4th Holy Communion 7.30 am

Sun 6th Benefice Eucharist 10 am at Swalcliffe

Fri 11th Holy Communion 7.30 am

Sun 13th Palm Sunday Young at Heart at Epwell 10.00 am

Holy Week 14th to 19th Matins 7.30 am

Thu 17th Maundy Thursday service 8.00pm at Broughton

Fri 18th 9.30 - 12 noon Sibford Primary School Childrens Music and Crafts day. 1.30pm Good Friday service at Shutford. 7pm Good Friday service with choir at Tadmarton

Sun 20th Holy Communion 10 am

Sun 27th Benefice Eucharist 10 am

May

Sun 4th Benefice Eucharist 10 am at Tadmarton

Sun 11th Family Service 10 am

LEARN TO DRIVE

Roy Bishop A.D.I.

Hourly Lessons, Intensive Courses
Pass Plus, Motorway Tuition

2 Cotswold Close
Sibford Ferris
Nr Banbury
Oxon OX15 5QP

Tel. 07967360417
01295 780484

RED HORSE GROUP

Windmill Farm
Banbury Road (A422)
Oxhill
Warwickshire CV35 0RL

Fuels - Coal, Oil, Gas, Wood
Gardening Services
Fencing
Soil, Compost, Mulch, Seeds
Landscaping
Farm & Country Supplies
Building Materials
Oil Tanks & Coal Bunkers

And much more !
Telephone: 01926-642832
Free Quotations !

Reflexology

Remedial Massage

Elizabeth Webber

MAR.LCSP (Phys)

Godswell Natural Therapy Centre
Bloxham, Banbury
Tel: 01295 - 788101

Sibford Bus Services

Free Bus Service

To Chippy Wednesdays Apr 2nd, 16th & 30th Departs 10 am
 To Banbury Thursdays Apr 10th & 24th Returns 12 noon

Pick up points are; The Colony, High Meadow, Cross Roads, Village Hall.

Service 480 Shipston - Sibford - Banbury

Not Sat (NS) Sat Only (S)

		NS	S		NS	S	
Shipston			8.45				
S Ferris School	7.15	9.10	9.13	10.57	12.57	13.43	18.27
S Gower Crossroads	7.18	9.13	9.10	11.05	13.05	13.40	18.30
Banbury Bus Station	7.45	9.40	9.40	11.32	13.32	14.10	18.57
		NS	S	NS	S		
Banbury Bus Station	10.30	12.30	12.30	14.40	15.10	18.00	
S Ferris School	10.57	12.57	12.57	15.07	15.37	18.27	
S Gower Crossroads	11.00	13.00	13.00	15.10	15.40	18.30	
Shipston			13.25				

Cherwell Villager 55 Sibford ~ Banbury

Wednesdays Only	Outward	Return
Sibford Gower	9.55 am	1.55 pm
Sibford Ferris	9.57 am	1.53 pm
Hook Norton	10.15 am	1.45 pm
Bloxham	10.35 am	1.15 pm
Banbury	10.50 am	1.00 pm

Cherwell Rural Dial-A-Ride Scheme

A mini bus with tail-lift to take **elderly or disabled people** and escort to Banbury (max fare £1.20)

Door-to-Door service. Book at least one day in advance.

Operates on **WEDNESDAYS ONLY**.

Phone 263777 for more details.

Calendar of Events

April

- Sat 5th Litterblitz collections. (9am Ferris p11 10am Gower p14)
Sat 5th Jumbo Jumble Sale 2 pm Village Hall p8
Tue 8th WI Talk. 'Four Weddings'. P 11
Wed 9th Mobile Library in Sibfords and Burdrop (2.25-4.20pm)
Wed 9th Horticultural Society Talk - Plant Legends p 18
Tue 16th LEO Club meeting. p20
Tue 15th Spinners & Weavers talk. p3
Thu 17th Sibfords Society Victorian Portrait Photography p6
Tue 22nd Deadline for contributions to the May Sibford Scene p6
Wed 23rd Mobile Library in Sibfords and Burdrop (2.25-4.20pm)
Sat 26 & Sun 27th Steeple Aston Cope Exhibition. p17
Mon 28th Quiet Garden day at Handywater p5

May (part)

- Thu 1st Sibford Gower Annual Parish Meeting. P14
Wed 7th Mobile Library in Sibfords and Burdrop (2.25-4.20pm)
Sat 10th New date for Warriner Choral Society at Sibford School p21
Fri 16th Sibford Gower Parish Council Meeting. P14

Don't forget the

Saturday 5th April

Village Litterblitz

9am at Lane End Corner in the Ferris

10am at the Village Hall in the Gower

And the

Church Jumble Sale

At 2pm in the Village Hall

Sibford Scene

Editor; Adrian Lamb. Grounds Farm, Sibford Ferris. 780380

e-mail adrian.lamb@care4free.net

Treasurer; Timothy Wimbush, The Rectory, Acre Ditch, S.Gower
780555

Advertising; Ivor Hopkyns, Elmridge Farmhouse, Sibford Gower,
Banbury, Oxon. OX15 5RT. Tel 788367