

Sibford Scene

June 2002

No. 244

Jubilee Celebrations

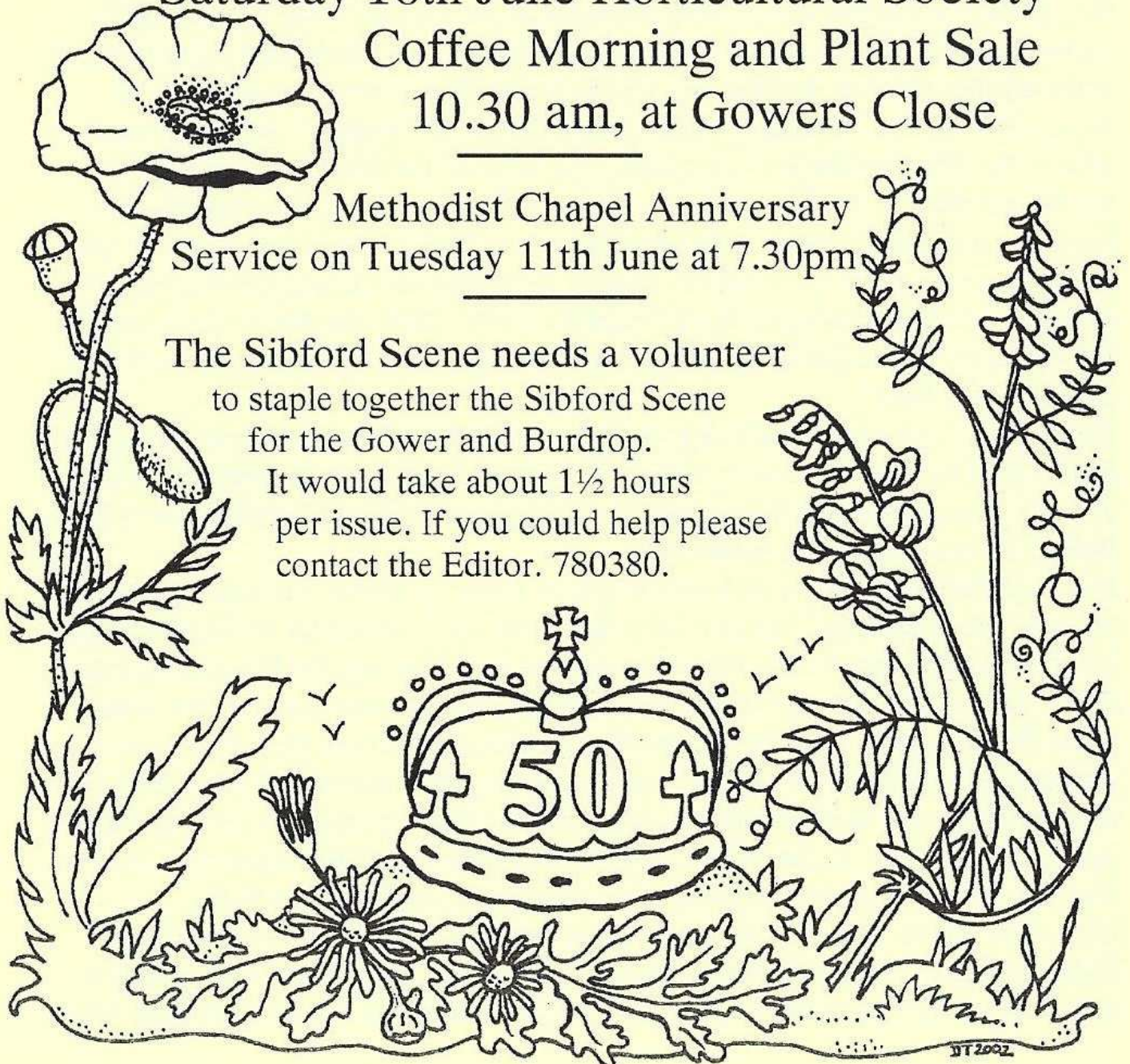
Saturday 1st to Tuesday 4th June

Your Full Pull Out Programme Inside

Saturday 16th June Horticultural Society
Coffee Morning and Plant Sale
10.30 am, at Gowers Close

Methodist Chapel Anniversary
Service on Tuesday 11th June at 7.30pm

The Sibford Scene needs a volunteer
to staple together the Sibford Scene
for the Gower and Burdrop.
It would take about 1½ hours
per issue. If you could help please
contact the Editor. 780380.



Nature Notes

April. 27th Away to Hickling in Norfolk to a house facing onto the broad with the floor level about the same as the water level of the broad but with a road between which is a few feet higher. We were greeted by moorhens on the front lawn.

April. 28th Coming from Sibford where natural laws apply this seems a strange man made, or at least man controlled area where the main waterways are higher than the agricultural land and the water from the network of drainage dykes has to be pumped up into them. However the system must work well as almost all the land is arable and the planting well forward with potatoes all planted and ridged up and the sugar beet showing well in their rows having been planted into a nice fine tilth. About 50% of the land in the immediate area is planted with these two crops the remainder is mostly wheat or barley but no oilseed rape. It is the sugar beet growing that has changed most since my youth when they had to be singled and then hoed twice more to control the weeds which meant hundreds of hours of backbreaking work. To see them here all coming up at the correct spacing without any weed competition seems almost magical.

April. 29th To the Norfolk Wildlife Trust Centre at Ranworth where about a mile of boarded walkways allow the inspection of the flora and fauna of the marsh and reed beds. We saw terns, house martins, swifts and swallows over the water and heard cetties warbler in the reeds. Seeing three small groups of egyptian geese made me wonder whether they, like the canada geese, could increase to become a nuisance until I read in a 1911 diary that there were quite a few of them around Hickling at that time. Strangely enough there are very few canada geese here.

April. 30th A wet and windy day. A bit better in the afternoon when we went to Bure Marshes Nature Reserve where we saw mallard, coot and greylag geese all with young ones which suggests that mink are not a great problem here although I have yet to see a water vole.

May. 1st To Hickling Broad Reserve where a pair of marsh harriers were working over the reed beds. The only bird that went up to challenge them was a peewit. Saw a very smart male reed bunting and a willow warbler that seemed to know that I was a bit hard of hearing as it shouted its song into my ear from about 2 yards away. Yellow alkanet was coming into bloom near the reserve entrance and the pretty little white climbing corydalis grows along the edges of the reed beds. It was probably a bearded tit that flew up from the reed and down again. It is not easy to see or hear the birds in these reed beds when the wind is blowing but I did see shovelers, a greenshank and swifts from a hide.

May. 2nd While some of our party hired a motor launch and went through Hickling Broad to Horsey Mere, I again went to the reserve and saw or heard reed, willow and grasshopper warblers and a whitethroat but the highlight was a

huge crane that flew over calling as it went. When the others returned from their boat trip they said that they had seen three of them. I was told by a local man that they are quite often seen at this time of year. This evening I heard the turtle dove which has been cooing in some bushes just along the road. We find that two local farms breed game birds which may be why we often see two red-legged partridges on our front lawn.

May 3rd There were three red-legged partridges on our lawn this morning. We cycled over to explore a nature trail on the river Ant where we saw two lazy mallard taking a lift on the roof of a cabin cruiser. We looked at two very different types of windmill pumps that used to raise the water from the dykes into the river. There were quite a lot of warblers including some grasshopper warblers. From a hide we watched a redshank feeding close by and again saw marsh harriers. We also found moschatel growing by the entrance gate.

May 4th As we left for home this morning there were two mallard sitting on the roof of the house and two greylag geese in their favourite spot on the reed thatched roof of the boat house opposite.

May 7th When we were cycling past the Brailes industrial park this evening a leveret as big as a rabbit ran out into the road. It must have been born very early this year or could it have survived the winter from a late litter last year?

Ann Woolgrove
FABRICS, CURTAINS & SOFT FURNISHINGS

Handsewn & interlined curtains & pelmet headings our speciality

Roman & Roller blinds

Customised design service and home consultancy

Every kind of fabric from many leading manufacturers

Decorative Poles, Tie backs & Trimmings

<i>Loose Covers and Cushions</i>	<i>Lampshade making</i>
<i>Wallpapers & Interior Decoration</i>	<i>Custom made Bedspreads & Headboards</i>
<i>Re-upholstery service</i>	

Tel/Fax: 01295 788145

Oddjob

CARPENTRY
PLUMBING
ELECTRICS
HEATING INSTALLATION
KITCHEN & BATHROOM FITTING
BUILDING WORKS
SECURITY

FOR A COMPREHENSIVE AND RELIABLE
LOCAL SERVICE
HUGO SEELY 01295 780355
FREE NO-OBLIGATION ESTIMATES
No job too large
Excellent local references available

The Sibfords Society

Our May meeting entitled King Alfred - Fact and Fantasy provide an evening of total entertainment.

Tim Porter shared with us his immense knowledge and enthusiasm for the Warrior/scholar King who shaped the original British Constitution. His slides illustrating his talk were excellent and transported us to the misty Wessex Weald and Somerset Levels where much of King Alfred's life was spent defending his kingdom against the Vikings. Our present Queen is a direct descendant of King Alfred so that made a good connection with our current Golden Jubilee celebrations.

Don't forget to visit our exhibition in the Primary school during the 4 day Bank holiday celebrating the Jubilee.

On **19 June at Swalcliffe Village Hall at 8pm**, Tim Node will be taking about Heraldry.

Our next meeting is our summer meeting on **Thursday 20th June** when we are visiting Anyho Park. We shall have a talk in the Library at 7pm and then a guided tour of the house and grounds. Please meet at the house at 6.50pm or let Jenny Barratt (780336) or Maureen Hicks (780259) know if you need to share a car lift. There are still a few places left if you haven't already signed up to join us on that evening.

FRANCIS MORDAUNT
MSSCh, MBChA
VISITING CHIROPODIST
To enquire about a Home Visit,
please telephone;
01295 730615
Professional Foot Care
In Your Own Home

Sibford Ferris Stores and Post Office

Your Local Convenience Shop

Bread baked daily on the premises

Fresh cakes and savouries

Newspapers & Cigarettes

Beers, Wines and Spirits

Chilled and Frozen Foods

Dry Cleaning, Photocopying and
Fax Services

National Lottery Agent

And lots, lots more....

Telephone your order
for free local delivery

Opening Hours

6 am to 6.00pm Monday to
Saturday

6 am to 1pm on Sunday

Terry & Judith

Main Street Sibford Ferris

Telephone 01295 788317

Friendship Club

The AGM was attended by quite a number of members and we were sorry to hear that Phyllis Webb had decided to retire as Chairperson, a position she has held for 12 years. After thanking the committee for their help and telling us a little history about the club she was thanked for all she had done and presented with a bouquet of flowers and a bowl of fruit. Bea Haynes was elected to take her place as chairperson and the rest of the committee elected as follows; Sandra Tustian (Treasurer), Eveline Boughton (Secretary), Bea Tanner, Alice Fowler, Daisy Moreby and Val Clark. The afternoon ended with a birthday tea provided by Phyllis Webb and Bea Haynes.

Dates for the Diary

June 4th Celebration Jubilee Tea in the Village Hall at 2 pm. Please bring a little food.

June 18th Mystery Coach Trip. Entrance to venue will be £3.00 each. Coach pick up times from Eveline 263460.

July 2nd Meeting in the Village Hall at 2 pm when Marilyn from Holloways will be talking about antiques. A small object for valuation may be brought to this meeting.



The Bishop Blaize Inn
17th Century Freehouse
Burdrop, Sibford Gower
Tel. (01295) 780323

Sam & Sheila welcome you.

Enjoy our well-kept traditional ales
Also our new menu of fine traditional fayre
Don't forget, Monday night is take-out night
Fish or double jumbo sausage and chips

Now Serving Traditional Sunday Roast.

Roast Beef, Yorkshire Pudding,
Roast potatoes, New Potatoes,
and Three Veg.

Book Early To Reserve Your Table.

Please Note...our kitchen will now be closed Tuesday evenings until March.

LEO NEWS.

The Leo ladies enjoyed their May meeting at Claydon. They had gone there for dinner to the Bygones Museum, where there is a restaurant now and very good food is served. They were rather depleted, being a party of eleven only, but the noise level was ear-splitting, which was surely a sign that everyone was having a good time.

There are so many things happening in the village during June, that it was decided not to have a Leo meeting in that month, but a meal is being planned in the White Horse pub, Wroxton for July 16th. Please keep an eye on the Scene to find out all the details.

MW.

SIBFORD TOTS AND BABES GROUP

We meet every Wednesday morning in term time, from 10.00 until 11.30 in the Friends' Meeting House, Sibford Gower - opposite the Moody Cow pub. A board is put at the entrance to guide you. New members always welcome! For more info call Anita Spencer on 788557.

The Gate Hangs High Inn

Hook Norton
Oxfordshire OX15 5DF
Tel: 01608 - 737387

*Home Cooked Food daily Lunchtimes & Evenings
Traditional Sunday Lunches
Hook Norton Real Ales
Patio Garden Car Park*

Proprietors: Stephen & Karen Coots-Williams

Food is served Mon - Sat 12 - 2 & 6 - 10
Sunday 12 - 2.30 & 7 - 9.30

Contributions for
the July
Sibford Scene
to the Shop or
Editor by
June 18th



GRIMSBY

FISH
MARKET

I am Terry Martin
and for 15 years I
have brought
fresh, best quality
fish and shell fish

to your area direct from Grimsby
on the Lincolnshire coast, and I'll
be appearing at Sibford Village
Hall car park from approximately
4 pm till 6 pm every Monday.
All welcome. I hope to see you all
soon. T.P. Martin

FARMHOUSE BED AND BREAKFAST GRANGE FARM SWALCLIFFE

*Enjoy warm hospitality & peaceful
surroundings in our comfortable 18th C
Farmhouse*

CONTACT: BARBARA TAYLOR.
TEL. 01295 780206

W.I. NEWS.

At the May meeting, discussions were raised on the resolutions selected to go before the T.G.M. at Wembley in June. Our Tadmarton W.I. Representative will raise her hand on our behalf, saying a definite "YES" to :-

1. Urging H.M. Government to support existing small abattoirs and to promote the re-establishment of local abattoirs, in order to minimise stress to animals, reduce the risk and spread of disease, and encourage the availability of locally produced meat.
2. In the interests of the health of both people and animals-of this country, urging NFWI to put pressure on the Government to implement stricter controls on the importation of foodstuffs into this country.

Arrangements were discussed about our yearly outing, which this year is to be to Stanway Water Gardens on **August 13th**. Then cake makers were enlisted for serving teas at the Village Fayre, as part of the Jubilee celebrations, on the 1 st June.

A quiz had been prepared, but by this time it was necessary to put the kettle on for a cup of tea - which was most welcome after all the talking! (We shall look forward to the quiz on another occasion). No less welcome were the scones and cake prepared and served by Norma Alien and Ann Benham.

The next meeting will be on **June 1 lth**, at 2 p.m. in the Village Hall. The speaker will be Mr. Goss, whose subject is "Laughter is the Best Medicine".
Competition: It Made me Laugh (written). MW

What do you want from your garden?

For: Garden Design & Advice,
Planting Plans, Sourcing
& Planting

Tel: 01608 685 314

Cathy Wallwork
Garden Design



Let me turn your garden dreams into reality..

GODSWELL NATURAL THERAPY CENTRE

Godswell Lodge, Church Street, Bloxham
Banbury, Oxon OX15 4ES

Acupuncture, Alexander Technique,
Aromatherapy, Art Therapy,
Chiropody, Chiropractic,
Counselling & Psychotherapy,
Cranio-sacral therapy, Homoeopathy,
NLP, Nutrition, Physiotherapy,
Reflexology, Remedial Massage,
Reiki, Spiritual Healing,
Shiatsu, Yoga.

Fully qualified professional therapists
For information Ring 01295 720347

Sibford Gower Annual Parish Meeting

The Annual Parish Meeting took place in the hall of Sibford Gower Endowed Primary School on the 24th April 2002. Several local electors joined the Parish Councillors and the Meeting was pleased to welcome Mr George Reynolds (County Councillor), Mr Steve Bowden (Deputy Area Engineer, Oxfordshire County Council Environmental Services) and Sgt Garrett who was accompanied by PC Owen Gilkes (both of the Police Rural Team).

Eric Payne (Chairman) gave a summarised account of the Parish Council's working year informing the Meeting of the various activities undertaken (eg planning applications considered, liaison with the County and District Councils with regard to road and footpath repairs, attendance at relevant meetings and seminars at Bodicote House etc)..

Mr Peter Baadsgaard reported on the financial year of the Town Estate Charity. Mr John Mulley (Neighbourhood Watch Scheme) spoke amongst other matters of the need for vigilance in respect of "doorstep sales" and home security. Mr Steve Bowden informed the Meeting of various repairs to roads, footpaths and drains which will take place during the coming months. Some of the repairs will remedy problems which have been drawn to his attention by the Parish Council. Sgt Garrett and PC Gilkes then addressed the Meeting. Owen Gilkes is on the point of taking up his duties as "Village Bobby" and these encompass responsibility for other villages in addition to ours. The Rural Police Team operates from an office in Deddington (Tel:01869 338444). Because the members of the Team will be out and about on their duties, this telephone may be unmanned but an answerphone is installed. Therefore, calls of an urgent nature should be made to Banbury Police Station (Tel:01295 252525). Sgt Garrett drew the Meeting's attention to the introduction by Cherwell District Council of Nuisance Investigations Officers. The title is self explanatory but more information may be obtained from the District Council's Environmental Health Dept (Tel: 01295 252535) or the Clerk to the Parish Council (01295 780391) will be pleased to supply details. The Clerk gave a brief account of the Parish Council's financial position. The Chairman paid tribute and expressed grateful thanks to two retiring Council Members. Maureen Hicks and Tom Pratt will be very much missed. The Chairman went on to welcome three new Councillors who take up their duties in May. From then, the Council will comprise (in alphabetical order) Peter Abbott, Peter Baseby, Muriel Chandler, Eric Payne and Robin Spicer. Questions from the floor concerning various topics were directed to the Chairman and the speakers. Some were dealt with but the others are to be referred to the next Parish Council Meeting on the 10th May.

The Chairman thanked all who had attended and expressed appreciation to the speakers for their contributions.

PH

NEWS LETTER FROM VILLAGE HALL MANAGEMENT COMMITTEE

The Village Lottery Games second draw took place on 5th May. First prize of £12 went to Mrs Suzie Taylor, formerly of Sibford Ferris. 2nd prize went to Muriel Chandler of £6 and 3rd prize of £5 went to Mr & Mrs Ron & Judy Hall both from Sibford Gower. To join in the fun please ring 01295 780025/780373.

The Official Opening of the Village Hall Extension will take place on **Saturday, 14th September**, starting at 1.30 p.m. with a children's party - Punch & Judy, Magician, Bouncy Castle, food and drink and this will be free to all the children. Followed by an adult evening event with live music, our own licensed bar and bar snacks. Raffle tickets will be on sale with a top prize of £100. Tickets for the evening event will be on sale in the next couple of months.

On **Saturday, 26th October** we are self promoting The Heart of England Jazz Band from 7.30 p.m. to midnight with one ticket price of £5 per person. There will be a licensed bar and bar snacks.

On **Saturday, 24th November**, in conjunction with Cherwell District Council, there will be a Concert at 8 p.m. by one of Britain's finest concert guitarists - John Mills. Tickets will be £6 and £4 (concessions).

On **Thursday, 5th December** we have The Toy Theatre for children from 5 plus, when paper puppets from a fading Victorian theatre come to life, at 7 p.m.

On **Saturday, 8th March**, at 7.30 p.m. we have an evening with Sid Kipper at The Parish Pump Show.

Please note these dates in your diaries and support your Village Hall and retain these theatre performances for the future. Further details from 780025.

Following the Collectables and Car Boot Sale on **Sunday, 2nd June**, 11.30 to 2.30 p.m., the next Sale will be on **Sunday, 7th July** and to try and get more support, we will hold this in the afternoon. Many thanks to everyone who has supplied many items for sale in aid of Village Hall funds. To book a table/pitch please ring 01295 251339.

At the recent Village Hall AGM, Mark Darvill was appointed Chairman (780052). Peter Stolwood, Treasurer (780326). Muriel Chandler, Secretary (780025). Ginny Bennett, Assistant Secretary (780373). Kathleen Winter, Booking Secretary (780461).

We are now looking forward to having the new extension, it is exciting watching the building progress and we are now ordering the white goods for the kitchen, cupboards, floor covering.



ORLo

Oxfordshire Rural Learner's Project
Sibford Gower Village Hall

Computer Open Day

Tuesday July 9th

10 till 2

Come and have a go at:

Surfing the Net

Making your own cards

Creating Posters

Find out about the course we will be offering

Sibford Ferris Parish Council Report Matters arising from the Annual Parish Meeting

Manor House Development.

Disruption in the village over the next 3 - 4 months. Swan Hill the developers of the Manor have given notice that they are to introduce a priority traffic system giving priority to traffic going from the Ferris to the Gower. This is to facilitate the removal and re-erection of the wall along to Mannings Hill. When the system is set up it would be very helpful if all traffic heading from the Gower to the Ferris could go via The Elm. A large rig will be arriving shortly on site to pile the footings. This will be on 3 or 4 lorries each large enough to need a police escort and will require Main Street to be free of parked cars to allow access. Notice will be given so that people can move their cars otherwise they will be moved by the Police from Main Street. The whole project may take up to 2 years to complete. Any problems should be addressed to the Site Manager - Mr. Castle.

The council is looking into possible access for villagers through the Manor arch to create a temporary footpath.

Concern was expressed about the fields below the site and what this area was going to be used for. The council are going to talk to the developers about this.

Sibford Ferris Sign

A replacement village sign on the Hook Norton Road was requested. A Preservation Order was asked to be placed on the sign post where Woodway Rd joins Main Street.

Parking outside the shop - It was questioned whether a lay-by could be built here. The chairman agreed to talk to the highways dept. about this and the sign.

The replacement for the bench which was stolen from near the Elm was discussed and where a new bench could be sited.

CHIROPRACTOR

John Mulley

DC MCC BAAC

AM Clinic, Banbury: 01295 262100
Bicester Chiropractic Clinic: 01869 321166
Or: 01295 780629

McTimony-Corley

Also treats animals

DAVID MALONE

HIGH CLASS PAINTER AND DECORATOR

Acre Ditch
Sibford Gower
Banbury
Oxfordshire OX15 5RW
Tel: (01295) 780546



CITB REGISTERED

Broken Colour Effects and Paperhanging a Speciality

Swan Hill - Re: Construction work at the Manor

We are writing to inform you that we will be putting a traffic management system in place within the next few days. This is to enable us to reposition the wall and form a new entrance opposite Mannings Close. The traffic management system is likely to be in place for 15 weeks. We apologise for any inconvenience caused during this time.

There has been talk of a temporary footpath through the site whilst construction is taking place. There will be no footpath temporary or otherwise through the site at all. When big plant is being moved through the village we will try and give as much notice as possible but we come under Police movement restrictions. It would also help if double parking did not take place in Main Street where the road is quite narrow.

We are sorry for any inconvenience caused during our construction operations, and can assure you all we will not be on site any longer than necessary.

V. Castle. Site Manager.

Sibford Horticultural Society

The talk with slides on patios, container planting and plants was well received and hopefully everyone went home with new ideas. Our next event is a plant stall at the Street Fayre on **June 1st**, plants needed to sell for this please.

Open Garden, Coffee Morning and Plant Sale at the home of Mr and Mrs Marshall on **Saturday 15th June** 10.30 am, Gowers Close which is just before the crossroads in the Gower. Judith has a very interesting garden so we hope to see many people at this event as it is to raise funds for the flower show.

July 24th. Outing to Radway Gardens. Meet at Radway Village Hall at 7 pm. Refreshments are being provided by Radway gardening club. Cost for non members £1.

August 17th Annual Show
Bottles and cakes will be needed please.

AROMATHERAPY &
MASSAGE
INDIAN HEAD MASSAGE
VIRGINIA BENNETT SRN
MHAFF
Home Visits Available
Tel 01295 780373

CAPE COLLECTION

Reading in the May Scene about the return of the swallows to Sibford made me think about what fantastic creatures they are. They spend the northern winter in this part of the Cape only to fly north again for over 6000 miles returning to within a mile or so of where they were born. We had a pair who nested under our porch in Folly Court and produced two families in the summer of 2000 before we left for South Africa. I often wonder what happened to them.

Talking of swallows, our human swallows have now left and gone to enjoy the European summer. They'll be back in October to enjoy the South African summer, This seems to be a growing trend in the Cape. Erinvale in particular is down to about 50% occupation in the winter. I must say that it is a very pleasant lifestyle if you can do it!

The Autumn rains have started but in between we are getting glorious warm, wind free days. The nights are cool but that's an excuse to have open fires and drink lots of red wine. Not that we need much excuse to drink red wine! The trees are turning lovely shades of red and gold especially the liquid ambers and the pin oaks.

At least in the Cape we get a proper Autumn. Steve and I went up to Johannesburg recently and experienced the dry cold of the High Veld. It stops raining for about two or three months in the winter so the landscape is very brown but the sky is bright blue day after day. Although we lived in Johannesburg from 1975 to 1988 I found that it had changed so much I hardly recognised some of the areas. It has grown and expanded enormously and continues to do so with new office parks, hotels and shopping centres being built. Some of the latter are very glitzy bordering on the naff. We visited one called Monte Casino which is mock Italian complete with fake exposed brickwork and peeling paint.

Way back in February we spent a few days in a wonderful place called Bushmans Kloof. It is situated north of Cape Town near Clanwilliam in an area called the Cederberg. Originally farmland, it has been returned to it's natural state and some of the native animals have been reintroduced like Cape mountain zebra, springbok, eland and red hartebeest . Evening game drives give you good views of these animals as well as many species of bird. The main attraction for me was the rock art paintings. Produced by the bushmen many years ago, there are over 125 sites on the reserve. There are lots of theories as to why they did the paintings and what they represented which only adds to their fascination. It was a great place to stay (luxurious accommodation and food) in a beautiful area.

Finally, we wish you well with all the Jubilee celebrations, we hope you have good weather to go with them. We will be visiting the UK again in August and hope to see some of you then.

Pat and Steve Bates

British Lung Foundation (BLF)
Breathe Easy Banbury
Coffee Morning

with

Revd. Keith and Barbara Walklate

at

Holly Tree House, Old Glebe, Tadmarton

Monday, 24 June 10-00 am

Bring & Buy, Plants, Gifts,

Cakes, Raffle, Tombola etc.

Information on BLF

Donations and Gift Aid welcome

For further information 'phone Chairman 01295 780273

Charity No. 326730 vworld wide web.lunguk.org

ALL WELCOME

.....

The BLF is a relatively young medical charity with its Breathe Easy Branch in Banbury, established for only 6 years. Nationally it has been in existence for 17 years and has undertaken some invaluable research work in 30 different lung and respiratory diseases. There is much more to do, particularly as 40% of deaths are now down to lung disease, including lung cancer and 48% of GP's consultation time is taken up on the range of illnesses. There is also a mistaken view that all lung complaints are self induced through smoking and this is not always the case, but these thoughts do hold back financial support for this charity. Like me, many of my friends in Breathe Easy have never smoked.

In addition to research, funds are spent on appropriate equipment at the Horton Hospital, campaigning for oxygen and other medical / care support and educational materials for patients, carers and the public at large.

Do put this event in your diary now and come along. If you can't make it then think how else you might be able to help.

We look forward to seeing you there.
Reverend Keith and Barbara Walklate.

**Fire Lighting Wood
For Sale**

2 pounds in money for

6 pounds in weight

Summer price

3 bags for a fiver

Will deliver

Mick Canning

The Old Malthouse, S.Ferris

01295 780321

Hook Norton Tennis Club - Summer News

The junior development programme organised by the Hook Norton Tennis Club continues to go from strength to strength. Currently children from Hook Norton and the surrounding villages are attending after-school coaching sessions on three days a week. However, to maintain the momentum, there will be further coaching in the summer holidays.

- The Summer Holiday Course, organised in partnership with Cherwell District Council, will run from 27-30 August between 10.00am and 1.00pm.
- Hook Norton Tennis Club has arranged additional 3-day coaching sessions on 5th, 6th and 7th August, which will take place between 10.00am and 4.00pm at the Club.

For further information on these courses please contact Rebecca Watts on 01608 730568.

There has been an excellent response from the youth players in the area (12-18 year olds) and a new coaching session has been established for them every third Sunday afternoon. The Club is keen to encourage the integration of the youth players into the senior section and the Tuesday and Friday Club evening sessions are an ideal opportunity for this to happen.

Hook Norton Sports and Social Club is holding its annual (well we hope it will become annual after the tremendous success of last year's celebrations) **FUN DAY**. This is on **Sunday 23rd June from 2pm - 6pm** on the playing fields, Bourne Lane, Hook Norton. This is a fantastic day for all the family with the chance to try all sorts of sports including javelin, softball, badminton, tug of war, football, tennis coaching, welly-wanging, shotput, frying-pan tennis, races and speed serving. There will be a bouncy castle for the younger children and plenty of entertainment for everyone. The Friends of Hook Norton School will be serving refreshments during the afternoon and the day's activities will be rounded off with a prize giving ceremony and a barbeque. The entrance fee (which covers all activities) will be £8 per family or £4 per adult and £1 per child. The proceeds will go to the Development Fund of the Hook Norton Sports and Social Club.

Wanted One Drake Must be small breed Jo Gilkes 788190
--

Oxfordshire Structure Plan

Oxfordshire County Council is reviewing the Structure Plan for the county. The Review will provide the framework for where new housing and other development should be built over the next fifteen years and beyond. The County Council wants to know your views before drawing up a new plan and it advises that you can look at the Issues Paper at the local library, district council offices or at County Hall. If you would like a copy of the Issues Paper, please phone the Structure Plan Team on 01865 815645 or view it on the web site at www.oxfordshire.gov.uk

Bed & Breakfast

AGDON FARM

Nr Brailes

Comfortable rooms
in old stone farmhouse

Tel: Maggie Cripps
01608 685226

THE VILLAGE SHOP - HOOK
NORTON

* NATIONAL LOTTERY *

Grocery - Greengrocery - Bakery

Wines - Spirits - Confectionery

Newspapers - Magazines - Cards

Flowers - Plants and Accessories

Video Rental - Bottled Gas

Open Monday to Friday 7am to
8pm

Saturday 7am to 8pm

Sunday 8am to 8pm

Telephone: 01608 737245

David Randall

Fully
Insured



Est.
1989

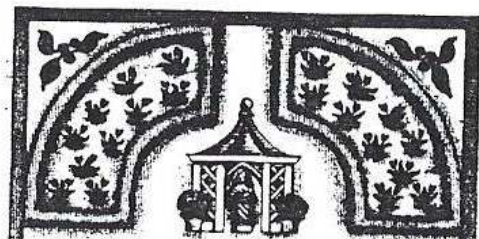
TREE WORK SPECIALIST

- Tree Work
All Types
*Crown Thinning
Reduction
Pruning / Re Shaping*
- Stump Grinding
Service
*Minimum ground
Disturbance*
- Hedges
Reduced / Trimmed
- Wood Chip
Mulch *Supplied*
- Garden Fencing
All Types
Supplied & Erected

Free Quotes & Friendly Advice

01608 738109 / 07831 571176

22 The Glebe, Hook Norton OX15 5LD



CREATIVE EARTH

For
CREATIVE
GARDEN DESIGN
and a
PROFESSIONAL
PLANTING SERVICE

Contact:
Sarah Martyn
at CREATIVE EARTH
TELEPHONE: 01295 788819

Sibford Cricket Club

An encouraging start has been made to the season with the weather holding to mid-May and five wins out of six starts.

The Saturday league team, after a loss on the opening day against Gayton, has secured two consecutive wins against Afro Caribbean and Croughton. Ian Woolerton, Dave Pratt, Jason Barton and Dan Watts have been in the runs with good bowling performances from Tom Holliday and Jason Barton.

The Sunday team is currently registering a 100% record with three straight wins against Aynho, Ilmington and Round of Gras. Spectators and new players are welcome.

June home games (2.30pm start) are:

Saturday 1 June	Wootton (League)
Sunday 2 June	Long Compton (Friendly)
Saturday 15 June	Byfield (League)
Sunday 23 June	Lower Swell (Friendly)
Saturday 29 June	Deanshanger (League)
Sunday 30 June	Chairman's Invitation

How great it is to have our very own village cricket team playing back at Sibford School again. It is good for us tea ladies and gents and nice too for those of us who like to wander up to the School and watch the team playing. Good village entertainment back on our doorstep. Thanks to all who made it possible

A Tea Lady

WELCOME TO SIBFORD

If you are a new resident of Sibford and have not yet received a copy of the, "Welcome to Sibford" booklet, please telephone Maureen Warden on Swalcliffe 788252 (Gower or Burdrop) or Mary Mills on Swalcliffe 780248 (Ferris), and a copy will be delivered to you. The information will help to make you feel at home - by acquainting you with the services, schools, clubs and societies that are currently active in the villages.

This month we say "welcome" to Eileen and Tony Haynes, who have recently moved into Cubbs Cottage, Burdrop. They have come from Potters Bar, Hertfordshire and are very thrilled to find themselves living in this lovely village. They have two grown-up sons, one of whom lives nearby in Bloxham.

Tony has recently retired from advertising and Eileen was last involved in insurance. As for hobbies, Eileen likes to paint, to read and visit the theatre. Tony has two Shetland ponies which he is hoping to move here eventually. He was also involved in Scouting to a great extent.

QUIET GARDEN DAY AT HANDYWATER FARM, SIBFORD GOWER

The last quiet retreat day before the start of the summer holidays will take place on **Tuesday 18th June**, from 9.30am. The weather could not have been more different for our last two meetings: we basked in hotter sunshine than Barcelona on April 3rd, and were treated to a day-long downpour on May 13th. However, bad weather is immaterial on these days. We curled up by log fires, reading and reflecting, and finding calm and inner peace in silent companionship.

If you would like to join one of these quiet retreat days, but would like to know more about it before you commit yourself, do contact Sue on 01295 788770.

There will be further Quiet Days in September and October, the dates for which will be posted nearer the time.

The garden at Handywater is also open for the National Gardens Scheme every Tuesday between 11am and 8pm until 11th June. Refreshments are available all day, in aid of the NGS charities.

COMPTON LANE NURSERIES

Little Compton
Nr. Moreton-in-Marsh
Tel:- 01608 674578

We offer an exciting and diverse range of herbaceous perennials, many of which are not widely available. A sales area surrounded by planted borders offers interest and ideas all year round. The alpine garden allows visitors to see some real gems growing in the open and under glass and houses the Joe Elliot collection.

As featured on Gardeners World.
Open Tuesday to Saturday
10am to 5pm. February to
October

SSN

SIBFORD SYSTEMS & NETWORKS

Over 15 years experience of PC and Mac sales, support, upgrades, internet, and networking for home and business.

Visit our internet store at

<http://www.sibford.com>

secure, on-line shopping for a wide range of peripherals, accessories, and consumables for Apple and PC systems.

Or call us with computer problems, or a quotation for your new system, network, or web site

Tel: 0845 458 2175

Fax: 0845 458 2176

e-mail: geoff@sibford.co.uk

Yellow Peril - beware the Killer Weed

Common ragwort (*Senecio Jacobaea*) is the most common form of poisoning in livestock and in March yet another pony suffered horrific pain and died in our county due to ragwort poisoning.

Ragwort also damages our environment by smothering rare wild flowers and most worrying is that research now proves that the pyrrolizidine alkaloids (the poisons in ragwort) have been found in eggs, grain, milk and honey.

If you want to safeguard the environment for future generations this is how you can help

- a. Check your land regularly for ragwort plants and treat as necessary.
- b. When you see ragwort plants in your locality pull them up and incinerate them. Please always wear gloves when handling ragwort.
- c. When you spot large areas of ragwort in fields or on road side verges contact either myself or the Oxfordshire County Council Environmental Services (tel no 01 869 241144) with full details of the location.

During July and August the British Horse Society clearance volunteers will be working throughout Oxfordshire clearing ragwort from public land, commons etc. So if you can spare a few hours to help please contact me. Lets make our county a safer place for both animals and humans free from the dangers of ragwort.

If you would like further information, leaflets or even a field visit to help identify ragwort please contact me the BHS welfare officer Miss D M Harris on 01 993 702844.

Please don't pull up all the other harmless plants in the senecio family. Ed.

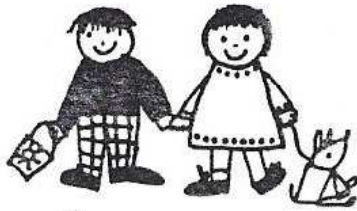


The 10th Anniversary of the Simon Weatherby Garden at Katharine House Hospice is being celebrated by a **Garden Open Day on Sunday 9th June** from 2 to 5 pm. Do come along and support this worthy cause. There will be plant stalls, bric-a-brac, teas and a raffle - as well as a lovely garden to enjoy!

The garden was independently funded and built, and then presented to the Hospice in memory of Simon Weatherby. Over £40,000 was needed for this task all of which was raised by private subscription.

Today the garden is maintained and cared for by a noble band of volunteers; it is still independently financed, so we do hope you will come along on the 9th June and give us your most valued support.

Sibford



Playgroup

News from Playgroup

“There’s a rumble in the jungle and a whisper in the trees...”

The children have been learning about big animals this month and with the help of Joel (a future big game warden perhaps!) a fine parade

of safari animals appeared in the middle of the hall this week. Colourful pictures of ‘Elmer the Patchwork Elephant’ have arrived at home and gutsy singing of ‘Down in the jungle where nobody goes’ added to the atmosphere!

If you would like more information about Playgroup please contact Michelle 780813 or Julie 788594.

The Firs Garage



HOOK NORTON, OXON

(1 mile north of village)

Phone:

01608 737349

www.firs-garage.com



TOW WITH CONFIDENCE

- * Sales (New & Used)
- * 3 year unlimited mileage warranty (New)
- * Optional 12 months warranty
- * Part exchange welcome
- * Off Road demos
- * Service
- * Vinyl graphics: for vehicle graphics, signage, magnetic, banners, etc.
- * MOTs
- * Parts
- * Body Work
- * Insurance estimates
- * Attendant service (Fuel)
- * Jet wash
- * Friendly service & lots more!

ESTABLISHED 1960

IT PAYS TO DEAL WITH A FAMILY BUSINESS

Where good old fashioned personal service & value still count

We offer far more than the city garages at country prices

Reflexology Remedial Massage

Elizabeth Webber

MAR.LCSP (Assoc)

Godswell Natural Therapy Centre
Bloxham, Banbury

Tel: 01295 - 788101

**RICHARD WALLINGTON
BUILDER**

**BLOCK PAVER DRIVES A SPECIALITY
ALSO EXTENSIONS, PATIOS
FENCING ETC.**

HIGH QUALITY WORK, FREE ESTIMATES.

01295 780705

0771 4613173

(SIBFORD COWER)

(MOBILE)

Methodist Chapel

We will be holding our Anniversary Service on **Tuesday 11th June at 7.30 pm** in the Chapel. The Chairman will be Thomas Rigg and the Speaker the Rev. J Smith, both from the Banbury Circuit. We would love to have a good congregation, all will be very welcome. Light refreshments will be served afterwards.

Bike Rides

There will be a Friday evening Bike Ride leaving Lanes End Corner (Ferris cross roads) at 7 pm. It is being started because there are youngsters unable to come on our usual Tuesday evening rides. All young riders must bring a responsible adult with them. Everyone is welcome to join us on Tuesdays or Fridays or even both!

THE SIBFORDS JUBILEE CELEBRATIONS

Tuesday 4 June 3.00 to 5.30 pm

Tea Dance at Temple Close

Only £3 per person to have tea and enjoy the delightful music of Pete Lay's quartet.

Listen, dance or just chat - whatever takes your fancy!

Please contact Vera Jones for tickets - 01295 780222

The Stag's Head, Swalcliffe

Tel: 01295 780232

*Our Butcher's the best
Our Baker's not bad either*

And we're working on the candlestickmaker!

**Listed in the CAMRA Good Beer Guide
and The Good Pub Guide**



Proprietors: Julia and Ian Kingsford

Fabulous Food

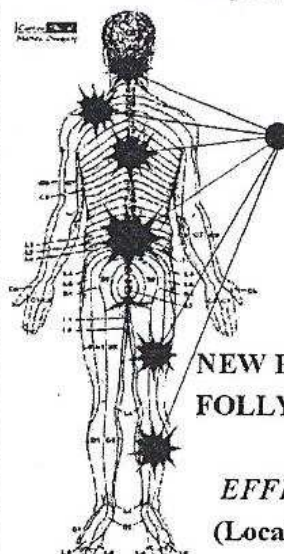
Superb Real Ale and wines

TRADITIONAL SUNDAY ROAST LUNCH

PIQUANT DISHES A SPECIALITY

**WE CURRENTLY HAVE VACANCIES FOR
WAITING, & KITCHEN STAFF. PLEASE
TELEPHONE JULIA FOR DETAILS.**

FOLLY FARM BACK PAIN CLINIC



**ACHES &
PAINS?**

I can help!

**NEW BACK PAIN CLINIC AT
FOLLY FARM, SWALCLIFFE**

A GENTLE &

**EFFECTIVE TREATMENT
(Local testimonials available)**

Call- John McArthur

DC, BSc (chiropractic), MBAAC

TEL: 077 40404 678 (BUSINESS)

OR, 01295 780280 (HOME)

SIBFORD GOWER OPEN GARDENS

Sunday 7 July - 2.00 to 6.,00 pm

The following gardens will be open under the National Garden Scheme:

The Manor House - Mr & Mrs M Booth

Carters Yard - Mr & Mrs.H Tengvall

Buttslade House - Mr & Mrs C Smith

Temple Close - Mrs V Jones

Teas at Temple Close will be organised by, and in aid of, the PTA.

Combined admission fee £2.50. Children accompanied by an adult admitted free.

MAKING PLANS ?

a complete design service

internal alterations,
lofts and extensions
hard landscaping
timber constructions
full planning and
building regs. service

Contact

D.R.Bovill

On 01295 780609



RED HORSE FUELS & GENERAL SUPPLIES

Windmill Farm, Oxhill
Warwickshire CV35 0RP

We Supply:-

Solid Fuels, British Gas (Propane & Butane) Heating and Farm Oils, Oil Tanks, Logs & Kindling Wood, Sand/Bal-
last, Cement, Slabs, Fencing Materials, Garden supplies
(Compost, Soil, Bark Mulch) Water Features, Flower
pots, tubs and much more!

Services we offer:- Lawn Mowing, Hedge Trimming,
Garden Tidying, Fence Erection, Slab Laying, Block
Paving, Landscaping, Mini Digger Hire, Replacement Oil
Tanks.

Call us now on 01926 642832 for a free quotation!

LEARN TO DRIVE Roy Bishop A.D.I.

Hourly Lessons, Intensive Courses
Pass Plus, Motorway Tuition

2 Cotswold Close
Sibford Ferris
Nr Banbury
Oxon OX15 5QP

Tel. 07967360417
01295 780484

Re - Upholstery

Antique & Modern

Dining Chairs Easy Chairs Arm Chairs
Three Piece suites Etc.
Contracts Undertaken

20 Years Experience

Free Estimates

B. WEBBER
01295 269362

Church Services

Society of Friends		Sunday at 10.30 am
Methodist		Sunday at 11.00 am
Roman Catholic Mass	Wroxton	Sunday at 9.00 am
	Brailes	Sunday at 11.30 am
Baptist	Hook Norton	Sunday at 10.30 am
Church of the Firstborn (Bridleways S.Gower)		Sunday at 10.30 am
Church of England, Holy Trinity, Sibford Gower.		

June

Sun	2nd	Benefice Eucharist at Shutford 10 am
Sun	2nd	Interdenominational Service 1.00 at Sibford School
Tue	4th	Songs of Praise for the Jubilee 7 pm
Wed	5th	Mums and Tots 2.15 pm. (For all under 5's)
Sun	9th	Family Service 10 am
Sun	16th	Holy Communion 9.30 am
Sun	23rd	Holy Communion 9.30 am
Sun	30th	Deanery Eucharist at Deddington 10 am



VINYL GRAPHICS
by
THERESA JACK

**VEHICLE LIVERY : SIGNAGE :
BANNERS : MAGNETIC : ARTWORKS : ETC**

The Firs, Hook Norton, Banbury. OX15 5DD
Tel: 01608 730555 Fax: 730271 Mobile: 07703 548154

TREES

WE'RE THERE FOR TREE CARE

All aspects of tree care undertaken
Specialising in reduction/removal of trees in confined spaces
Supplier of logs & chippings
Over 20 years experience
Fully Insured

For a free quote and a chat please contact:
Arthur White (The Tree Chap) 01295 788549

1422785

Children's Day Nursery, Epwell



- Full day care for children 2½ to 5 years
- Full and part time places
- Open Monday to Friday 9.00am - 4.00pm.
- Excellent Ofsted Report

The nursery provides excellent opportunities for children to explore and learn at their own pace under the guidance of trained, experienced and caring staff.

For further information ring Julia
Tel: (01295) 780580

Calendar of Events

June

- Sat 1st to Tue 4th Jubilee Celebrations. See programme.
- Sat 1st Annual Village Fayre and Evening Concert
- Sun 2nd Village Sports and Helicopter trips
- Sun 2nd Collectables and Car Boot sale. V.Hall 11.30 - 2.30 pm p9
- Mon 3rd Open Gardens, Evening of Music and Beacon
- Tue 4th Tea Dance p20, Songs of Praise and Bring and Share Supper
- Tue 4th Friendship Club Jubilee Tea Party p5
- Wed 5th Mobile Library in Sibfords and Burdrop (2.25-4.20pm)
- Sun 9th Hospice Gardens Open Day 2 - 5pm p18
- Tue 11th W.I. "Laughter is the best Medicine" p7
- Tue 11th Chapel Anniversary Service 7.30pm p20
- Sat 15th Horticultural Society Coffee Morning p11
- Sun 16th Warriner School PTA Car Boot Sale
- Tue 18th Quiet Garden Day at Handywater p17
- Tue 18th Friendship Club Coach Trip p5
- Thu 20th Sibfords Society at Aynho Park p4
- Sat 22nd Shakespeare's *Richard III* Leasowe House 780569
- Sun 23rd Hook Norton Sports Club Open Day p14
- Mon 24th B.L.F. Coffee Morning p13

July (part)

- Tue 2nd Friendship Club "Antiques" p5
- Sat 6th Warriner PTA Car Boot Sale (01295 720580)
- Sun 7th Collectables and Car Boot sale. V.Hall 11.30 - 2.30 pm p9
- Sun 7th Gower Open Gardens p21
- Tue 9th Village Hall Computer Day p9
- Wed 24th Horticultural Society Visit to Radway Gardens p11

Advance Notice

August 4th Senior Citizens Garden Tea Party at Temple Close 3pm

Sibford Scene

Editor; Adrian Lamb. Grounds Farm, Sibford Ferris. 780380

e-mail adrian.lamb@care4free.net

Treasurer; Timothy Wimbush, The Rectory, Acre Ditch, S.Gower
780555

Advertising; Ivor Hopkyns, Elmridge Farmhouse, Sibford Gower,
Banbury, Oxon. OX15 5RT. Tel 788367