

# Sibford Scene



May  
2001

No. 233

A very big **Thank You** must go to

Sheila Walsh for all the cover designs and extra cartoons and sketches she has provided over the years to brighten up the Scene. They have been much admired and appreciated as each issue of the Scene has its own individual appearance.

Sheila feels that it is now a job for someone younger. If you would like to take on the job of providing a cover design for the Scene please contact me.

Adrian Lamb

---

Christian Aid Austerity Lunch  
Monday 14th May 12.30 - 2.00pm  
At the Rectory. See page 18



## Nature Notes

**March 26th** I was alerted to a road casualty at the bottom of the hill between Sibford Ferris and Hook Norton. It turned out to be another mink which shows that there must be quite a few in our area. It was warm enough today to bring a brimstone butterfly out of hibernation but it is not forecast to last.

**March 29th** In spite of the weather a blue tit is busily carrying nesting material to a nestbox that I made from an offcut of grey plastic sewerage pipe. They will probably be safer there than in a wooden box especially one that is going a bit rotten. My daughter saw a blackbird chopping up worms to feed to its young one today. A real early bird.

**April 2nd** The blackcap that was singing in the garden this morning is the first migrant that I have heard this year.

**April 15th** Young blackbirds, probably the ones that were being fed on March 29th have left their nest and are being fed around my daughters garden.

**April 16th** Mink are an even worse threat to our wildlife that I had thought. I knew that they were decimating the duck population by taking their eggs and young but a film shown on television this evening showed one taking an adult duck. The introduction of wild creatures from other countries has so often had disastrous results; the grey squirrel that took over from the more attractive red one in most of England; the Canada geese which were imported as ornamental birds and for some time had to be restocked with imported birds as they did not at first breed here but now nest on every sizable pond in the country to the detriment of our mute swans; the coypu which did so much damage to river banks and sugar beet crops in East Anglia, for a few years, but which now has been trapped to, or almost to, extinction as a wild animal in England. A scientist who is studying B.S.E. thinks that it is most likely to have come to this country with a consignment of antelope that were imported from South Africa for a safari park; various deer which were released or have escaped from collections have added to the problems of foresters and gardeners; foreign crayfish that are taking over from our native ones in many rivers; many damaging insects and diseases have been accidentally imported with timber; aliens are still being introduced like the big cats thought to be roaming



some areas and insects that are being released into glasshouses to kill off other insect pests now known as biological control. I am afraid that when they have killed off all the pest insects they may start on the beneficial ones. Although the reintroduction of once native species is unlikely to do much harm I don't think that the introduction of foreign ones into the wild can ever be worth the risk involved.

**April 18th** A pair of bullfinches paid a rare visit to our bird table this morning and a goldfinch came this afternoon.

**April 19th** The bullfinches came again this morning.

---

## The Brown Envelope Collection

Its never too late to send us a donation towards the production cost of the Sibford Scene.

Thank you to all those who have been returning the brown (and a few white) envelopes to the Post Office with donations to the Sibford Scene and for the generous donations made.

To date I have received less than a fifth of the envelopes delivered with last months Scene and it would be very nice to increase the funds a little more. If you would like to contribute please hand your envelope in at the Post Office or deliver it to the Treasurer at The Rectory in Acre Ditch.

The Sibford Scene relies on donations and advertising to pay its bills and we are trying to improve the quality of printing and the overall appearance of your parish magazine, so please help us to keep up what I hope is the good work.



*Ann Woolgrove*  
FABRICS, CURTAINS & SOFT FURNISHINGS

Handsewn & interlined curtains & pelmet headings our speciality  
Roman & Roller blinds  
Customised design service and home consultancy  
Every kind of fabric from many leading manufacturers  
Decorative Poles, Tie backs & Trimmings

---

*Loose Covers and Cushions*      *Lampshade making*  
*Wallpapers & Interior Decoration*      *Custom made Bedspreads & Headboards*  
*Re-upholstery service*

**Tel/Fax: 01295 788145**



# LEO NEWS

The April meeting was at the home of Maureen Warden. We all took photographs of the first house we occupied after getting married and there were lots of interesting stories to impart. For a few of us, who were married soon after the war, it was very difficult finding accommodation in those hard times and it often meant sharing a home with parents or taking rooms.

The next meeting, on **May 15th**, will be at the Red House, Burdrop. Norman and Mary Nash have agreed to give us a talk about **Holidays on a Canal Boat**, which should prove to be very entertaining. There were apparently some frightening moments as well as funny ones, so we are looking forward to hearing about them.

We meet at 8 p.m. and always welcome new members.

MW

## MAKING PLANS ?

**a complete design service**

internal alterations,  
lofts and extensions  
hard landscaping  
timber constructions  
full planning and  
building regs. service

Contact

**D.R. Bovill**

**On 01295 780609**

**FRANCIS MORDAUNT**

**MSSCh, MBChA**

**VISITING CHIROPODIST**

To enquire about a Home Visit,  
please telephone;

**01295 730615**

**Professional Foot Care**

**In Your Own Home**

*Sibford Ferris*

*Stores and Post Office*

Your Local Convenience Shop

Bread baked daily on the premises

Fresh cakes and savouries

Newspapers & Cigarettes

Beers, Wines and Spirits

Chilled and Frozen Foods

Dry Cleaning, Photocopying and

Fax Services

National Lottery Agent

*And lots, lots more....*

Telephone your order

for free local delivery

Opening Hours

7.30 am to 6.00pm Monday to

Saturday

8am to 1pm on Sunday

Terry & Judith

Main Street Sibford Ferris

Telephone 01295 788317



## W. I. NEWS & INFORMATION

We welcomed Greta Baadsgaard back for another turn as President.

An interesting report on the recent meeting at Oxford Town Hall was given by Margaret Cox. Tim Finney spoke about Organic Farming and on the sad subject of "Foot and Mouth". He was followed by Gervase Phinn, a former Inspector of Schools in Yorkshire, who had a fund of very funny stories to tell of his sixteen years in the Job.

Brenda Power attended Valerie Cantrell's craft class at Middleway and showed us the beautiful sewing box she'd made. It took her six hours !

We had almost a full house to hear Elizabeth Page's 'Let me entertain you' and feel sorry for the few who missed a most hilarious afternoon. With a change of hats, specs or scarves she altered her appearance to fit each monologue. Brilliant!

A fine array of scarves were brought for the competition. 1st. Maureen Warden, 2nd. Gillian Soden and 3rd. Jean Puddle.

Delicious teas were provided by Kathleen Reid and Brenda Power. Sadly the 'Spectacular' at Broughton Castle for July is cancelled owing to 'Foot and Mouth'.

MAY 8th - RESOLUTIONS MEETING

R.P.



### **Bishop Blaize Inn**

#### **17th Century Freehouse**

**Burdrop, Sibford Gower**

**TeL.(01295) 780328**

**Sam & Sheila Welcome you.**

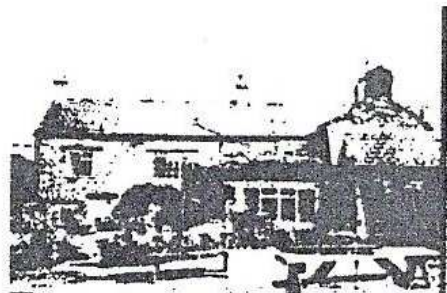
**Enjoy our Well-Kept Traditional ales**

**Also our new menu of fine Traditional Fayre**

**Don't forget Monday night is take-out night**

**Fish or double jumbo sausage and chips**

**Looking for some where to go on a warm  
summers evening ? Don't sit in any garden  
Sit in our Fabulous open garden with  
views over the Glorious Sib Valley, were  
on a clear day you can see into three  
different Counties.**





# VILLAGE HALL NEWS

The first draw of the Village Lottery took place at last month's Collectables & Car Boot sale, with 50 players taking part. Mrs C Bell, Burdrop took the £12 prize; Mr & Mrs Hall, Sibford Gower £8; Mr P Hardman, Sibford Gower £5. If you would like to take part please telephone either 780025 or 780373 - the more players, the higher the prizes!

Proposed Hall Extension. Two members of the Steering Committee had a lengthy telephone interview with the person from the Lottery Board who will represent us and present the Application to the Board. This provided additional background information and the application now goes forward and we hope to have further news in early June.

A further meeting to organise the Annual Fayre on **Saturday, 23rd June**, takes place on the 25th April, with probably two further meetings in May (which will be given in the District News of the Banbury Guardian). There will be a Childrens Art Competition and this year's picture theme is to be "Midsummer", for three age groups - under 5's, 5 to 9 years and 10 to 14 years. Forms will shortly be available in Sibford Ferris Stores, Sibford Primary School and at the various Clubs held in the Hall. Pictures will be judged by local artist Nigel Fletcher.

The April Collectables and Car Boot Sale raised £94 (less advertising costs) for Hall funds and again thanks go to local residents who provided items for sale on the Village Hall table. The next Sale is on **Sunday 6th May**, 12 noon to approximately 3 p.m., with refreshments available, and the June Sale is on **Sunday the 3rd**. The **Annual Fayre on the 23rd June** will also include a Car Boot Sale. Bookings taken on 01295 251339.

The Annual General Meeting of Sibford Village Hall takes place on **Wednesday, 16th May** at 8 p.m. in the Hall, when members of the public are welcome.

Dunns Public Auction takes place in the Hall on **Sunday, 27th May** - viewing from 12 noon, auction starting at 2.30 p.m. Refreshments available. Details from 01608 662587.



# Friendship Club

Our Easter Tea was preceded by a few games of bingo and then we sat down to enjoy a lovely meal which was provided by all the members. Thank you one and all for such lovely food and wonderful variety. The meal was rounded off with an Easter Cake which was made by Valerie Clarke.

## Diary dates for May and June.

**Tuesday 1st May.** AGM in the Village Hall at 2.00 pm. Please come if possible.

**Tuesday 15th May.** Coach trip to the Wedgewood Pottery. Details from Eveline Boughton (263460).

**Tuesday 5th June.** Coach trip possibly to a garden centre yet to be decided.

**Tuesday 19th June.** Village Hall at 2.00 pm when Canon Palmer will talk about one of his River Trips in Russia. Visitors welcome.

**DAVID MALONE**  
**HIGH CLASS PAINTER AND DECORATOR**

Acre Ditch  
Sibford Gower  
Banbury  
Oxfordshire OX15 5RW  
Tel: (01295) 780546



CITB REGISTERED

*Broken Colour Effects and Paperhanging a Speciality*

**What do you want from your garden?**

For: Garden Design & Advice,  
Planting Plans, Sourcing  
& Planting

Tel: 01608 685 314

**Cathy Wallwork**  
**Garden Design**



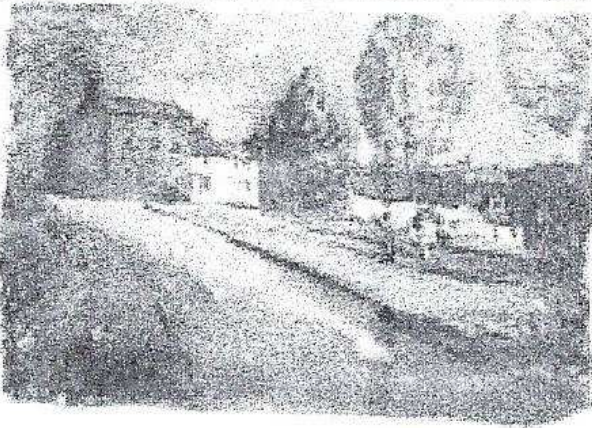
Let me turn your garden dreams into reality..

**GODSWELL NATURAL THERAPY CENTRE**  
*Godswell Lodge, Church Street, Bloxham  
Banbury, Oxon OX15 4ES*  
\*\*\*\*\*

Acupuncture, Alexander Technique,  
Aromatherapy, Art Therapy,  
Chiropody, Chiropractic,  
Counselling & Psychotherapy,  
Cranio-sacral therapy, Homoeopathy,  
NLP, Nutrition, Physiotherapy,  
Reflexology, Remedial Massage,  
Reiki, Spiritual Healing,  
Shiatsu, Yoga.  
\*\*\*\*\*

*Fully qualified professional therapists  
For information Ring 01295 720347*





# EXHIBITION

WATERCOLOURS OF  
LOCAL SCENES & LANDSCAPES

By Nigel Fletcher at:

## THE MISSION ROOM SIBFORD GOWER

(7 miles west of Banbury on the B4035,  
signposted near village)

OPEN FOR TWO WEEKS  
12th May until 27th May  
inclusive. 10am-5pm

For further details contact  
01295 780234

In conjunction with ARTWEEKS

## The Firs Garage



HOOK NORTON, OXON  
(1 mile north of village)

Phone:

01608 737349

[www.firs-garage.com](http://www.firs-garage.com)



Firs Daihatsu

*We offer far more than their city garages at country prices.*

- \* Sales (New & Used)
- \* 3 year unlimited mileage warranty (New)
- \* Optional 12 months warranty
- \* Part exchange welcome
- \* Off Road demos
- \* Service
- \* Vinyl graphics: for vehicle graphics, signage, magnetic, banners, etc.
- \* MOTs
- \* Parts
- \* Body work
- \* Insurance estimates
- \* Attendant service (Fuel)
- \* Jet wash
- \* Friendly service & lots more!

ESTABLISHED 1960

IT PAYS TO DEAL WITH A FAMILY BUSINESS

*Where good old fashioned personal service & value still count.*

The Firs Garage would like to thank the local community  
for there loyal support, it is much appreciated.



# The Sibfords Society

courtiers resided whilst hunting. During Henry II's reign, he brought animals in from other countries, even, apparently, a tiger. It is only in recent times that the forest has largely been cut down and sold for agricultural land

The next meeting on the **17 May at 7.30 pm** in the Village Hall, will be given by a local speaker, Kevin Wyles, who will talk

about the history of the Tysoe Fire Service. The Fire Service used to attend fires in the Sibfords and so promises to be an interesting evening.

On the **9 May** in the Swalcliffe Village Hall, there will be a talk about printed maps given by John Leighfield, which we are welcome to attend.



**FARMHOUSE  
BED AND BREAKFAST  
GRANGE FARM  
SWALCLIFFE**  
*Enjoy warm hospitality & peaceful  
surroundings in our comfortable 18<sup>th</sup> C  
Farmhouse*  
**CONTACT: BARBARA TAYLOR  
TEL. 01295 780206**

**STUART and JOYCE**  
welcome you at  
**THE GATE HANGS HIGH**  
Hook Norton

Traditional Ales in our friendly pub  
with excellent food available in the  
extended restaurant

Evening Bookings Advisable

Telephone 01608 - 737387

**BAR MEALS ALSO AVAILABLE**

Open Seven Days per Week.

Bar only on Sunday evenings.

The Gate Hangs High & Hinders None,

Refresh & Pay and Travel On!

**AROMATHERAPY &  
MASSAGE**  
**INDIAN HEAD MASSAGE**  
**VIRGINIA BENNETT SRN**  
**MBAF**

Home Visits Available

Tel 01295 780373



## EASTER IN CAPE TOWN

I remember somebody asking me where we would go on our holidays when we lived in South Africa. The inference was that we would be on permanent holiday living in the Cape and so where else could we possibly go which would offer us something different or more relaxing. Well of course South Africa is a big country and although we lived here before we've seen only a fraction of it. Also there are so many more places that have opened up to tourists and have something to offer. So our first real holiday since we've been here was to a place called Knysna along the Cape coast towards Port Elizabeth. It's a small seaside town on the popular Garden Route and a favourite stopping off place for people 'doing' this part of SA.

We booked a week in a B & B situated on the Kynsna lagoon which is a large tidal lake. The entrance to the sea was known as one of the most dangerous in the days of the sailing ships and many of them foundered trying to get through the Heads, as they are known, to the sheltered waters beyond. Now only leisure craft go through but even they have to know the tides and conditions to get through safely. The lagoon itself has a tidal range of two metres which makes it a haven for birds and good for fishing. We had some fun paddling around on paddle skis looking at the bird life which included the black African oyster catcher, giant kingfishers, avocets with their spoon shaped bills and herons. One night we also saw a Cape Eagle owl just sitting in the middle of the road. At first we thought it was injured but when we stopped it flew off and landed on a road sign so we could have a good look at it.

We also explored some of the nearby coastline and found some beautiful beaches, completely unspoilt with very few people around. It's so nice to see that places of natural beauty still exist without the aid of a MacDonaldis. Also, while we were in Knysna we met up with another, now ex, Sibfordian, Miriam Henbrey who was over here visiting her sister who lives in Cape Town. We all had a meal together one evening in a lovely fish restaurant overlooking the lagoon and reflected on how Sibfordians meet in the strangest of places.

Returning from Knysna I prepared for another visitor, this time a girlfriend who I have known for a very long time. So yet again I went up Table Mountain, out to Cape Point, shopping at the Waterfront, wine tasting, and beach walking - it's a tough life here! One thing we did that was different was to go on a historic walk around Cape Town. This was very interesting and a real education as the lady that took us around was a mine of information and a real enthusiast. She didn't stop talking for two and a half hours!



Easter also saw some special events. We went on the Helderberg historic steam train up Sir Lowrey's Pass which was great fun. We didn't think we were going to make it at one point as it had been raining and the wheels kept slipping on the track but we all sung 'of course it can, of course it can' and it did! There's another steam train that runs from Knysna to George along a beautiful stretch of the coast called the Outeniqua Chou Chou. I'm afraid we didn't make that one this time so that's still to do.

We also have a very good craft market in Somerset West which was on over the Easter weekend. Only registered crafters are allowed to have stalls and they are all of very high quality. My friend and I had a great time looking and of course buying. Then on Easter Sunday we got up early and went to the sunrise service held in the Helderberg Nature Reserve. We all took our chairs and our breakfast picnics and watched the sun rise over the Hottentots-Holland mountains. It was truly glorious and a wonderful way to celebrate Easter. We then had friends round for a braai (barbecue). Yes, the weather is still good enough, in fact it's very pleasant at the moment, not too hot and not too much wind. We have had some rain too and there is an autumnal feeling with the leaves turning and the nights drawing in.

Finally, we have just had a notice to say that the guinea fowl and Egyptian geese which are plentiful on the golf estate where we live have now become a nuisance. They are scratching up the greens and leaving their calling cards all over the place. There has been much debate as to how to get rid of them with Cape Nature Conservation, the Helderberg Nature Reserve and the local bird society all being consulted. The solution has been to employ a dog trained to chase the birds (only these two species however!). The theory being that they will leave the estate of their own accord and settle elsewhere. I'm not sure whether this will work in the long term but I've seen the dog in action and he is remarkably good at his job and I should think that the dog thinks he's in heaven!

Telephone: 01295 269362 / 788101

## Gower Products

*Upholstery  
Traditional & Modern*



SIBFORD GOWER, BANBURY, OXON.

So wishing you all a (be-lated) happy Easter and hoping that the weather is brightening up for you. We are also saddened at the extent and devastation of the foot and mouth disease and hope that Sibford has not been too badly hit.

Pat and Steve Bates



# Methodist Chapel

An invitation is extended to everyone to come to our Chapel Anniversary on **Tuesday 5th June at 7.30 pm**. When the speaker will be our present Superintendent the Rev. James Skinner who has been in this Circuit for the past 5 years and will soon be moving to new pastures.

We would love to have our Chapel full on this occasion which could be his last appearance at Sibford.

Light refreshments will be served after the service.

## **Bed & Breakfast**

**AGDON FARM**

**Nr Brailes**

**Comfortable rooms  
in old stone farmhouse**

**Tel: Maggie Cripps  
01608 685226**

## **RED HORSE FUELS**

*(R. C. Hoggins)*

Windmill Farm, Oxhill, Warwickshire

Telephone: 01926 642832

Solid Fuels and Logs  
Heating Oils  
Bottled Gas and Paraffin  
Peat, Compost, Growbags, Soil,  
Sand, Gravel, Cement  
Garden Fencing  
Lawn Mowing/Garden Tidying

Phone for more details

# **GRAPHICS \*DIRECT**

## **VINYL GRAPHICS**

by

## **THERESA JACK**

**VEHICLE LIVERY : SIGNAGE :  
BANNERS : MAGNETIC : ARTWORKS : ETC**

**Tel: 01608 730555 Fax: 730271**

**The Firs, Hook Norton, Banbury.**



# Enter the Tug O War Challenge!

Farmers! Will you dare to enter a team for the Village Hall  
Annual Fayre Tug O War?

If any local groups wish to form a team,  
please contact Ginny on 780373.

The prize is a generous amount of Hook Norton Beer.

## DAVID RANDALL TREE CARE

ALL ASPECTS OF TREE WORK UNDERTAKEN  
CROWN THIN / REDUCTIONS, FELLING, ALSO  
HEDGE CUTTING, FENCING AND  
WOODCHIP MULCH SUPPLIED

FRIENDLY ADVICE AND FREE QUOTES  
"A SIBFORD BASED BUSINESS"

01295 780 342

## COMPTON LANE NURSERIES

Little Compton,  
Nr Moreton-in-Marsh  
Tel:- 01608 674 578

We offer an exciting and diverse  
range of alpines and herbaceous  
perennials, many of which are not  
widely available. A sales area sur-  
rounded by planted borders offers  
interest and ideas all year round.  
The alpine garden allows visitors to  
see some real gems growing in the  
open and under glass and houses  
the Joe Elliot collection.

Open Tuesday to Saturday  
10am to 5pm February to  
October

## SSN

### SIBFORD SYSTEMS & NETWORKS

Over 15 years experience of PC and Mac  
sales, support, upgrades and networking

600MHz PC systems from £450

Apple iMac and G4 systems from £549

WWW package with free domain name,  
unlimited web space, 5 e-mail accounts,  
internet access only £40 p.a.

E-mail to your domain name only £20 p.a.

sibford.com e-mail addresses only £5 p.a.

Prices include local delivery and  
installation but exclude VAT @ 17.5%

33 Distons Lane, Chipping Norton OX7 5NY

Tel/Fax: 01608 641323

e-mail: geoff@sibford.co.uk



# Jumble Sale

A jumble sale will be held in the Village Hall on  
Saturday 26th May at 2.00 pm.

Part of the proceeds will be donated to "Dogs for the Disabled".  
Please support this worthy cause.

---

Thank you to everyone who helped with the Jumble Sale on Saturday 8th April in aid of our Church. £192.96 was raised. It was a pity we did not have more customers but it was a ghastly afternoon which I expect kept people indoors.

Jane Holliday.

## THE VILLAGE SHOP - HOOK NORTON

\* NATIONAL LOTTERY \*

Grocery - Greengrocery - Bakery  
Wines - Spirits - Confectionery  
Newspapers - Magazines - Cards  
Flowers - Plants and Accessories  
Video Rental - Bottled Gas  
Open Monday to Friday 7am to  
9pm

Saturday 7am to 8pm

Sunday 8am to 6pm

Telephone: 01608 737245

## RICHARD WALLINGTON BUILDER

**BLOCK PAVER DRIVES A SPECIALITY  
ALSO EXTENSIONS, PATIOS  
FENCING ETC.**

**HIGH QUALITY WORK, FREE ESTIMATES.**  
**01295 780705      0771 4613173**  
**(SISFORD GOWER)                      (MOBILE)**

## *Reflexology Remedial Massage*

**Elizabeth Webber**

MAR.LCSP (Assoc)

Godswell Natural Therapy Centre  
Bloxham, Banbury  
Tel: 01295 - 788101

## TREES

### WE'RE THERE FOR TREE CARE

All aspects of tree care undertaken  
Specialising in reduction/removal of  
trees in confined spaces  
Supplier of logs & chippings  
Over 20 years experience  
Fully Insured

For a free quote and a chat please  
contact:

**Arthur White (The Tree Chap) 01295 788549**



## QUIET GARDEN DAY

at Handywater Farm,

Sibford Gower

Tuesday 5th June

9 for 9.30am

The next Quiet Day at Handywater will have a few changes to the usual pattern. On Tuesday 5th June the day will start half an hour earlier than usual, so please make a note of the time. For those that wish to join the group, I will be leading the meditation with reflections on my own spiritual journey, with some reference to Bible quotations. You may find it helpful to bring a Bible of your own. You will be invited to join the group at 9.30am, 11am, and 12.30pm for 10-15 minutes, so there will be more than an hour between those times for private meditation.

Tea, coffee, soft drinks and biscuits will be available as usual in the kitchen, but if you would like to have lunch at Handywater, please could you bring a contribution to the meal table.

For those who would like a longer time to themselves in the garden, the afternoon will begin at 1.30pm and end at 3.30pm with a few prayers based on the morning's reflections.

*The Stag's Head, Swatcliffe*

*Tel: 01295 780232*

*Our Butcher's the best*

*Our Baker's not bad either*

*And we're working on the candlestickmaker!*

**Listed in the CAMRA Good Beer Guide  
and The Good Pub Guide**



*Proprietors: Julia and Ian Kingsford*

*Fabulous Food*

*Superb Real Ale and wines*

TRADITIONAL SUNDAY ROAST LUNCH

PIQUANT DISHES A SPECIALITY

+ COURSE CHRISTMAS MENU FOR PARTIES

**WE CURRENTLY HAVE VACANCIES FOR**

**WAITING, & KITCHEN STAFF. PLEASE**

**TELEPHONE JULIA FOR DETAILS.**

Nobody is obliged to join any of the group sessions; anybody who would like just to spend a quiet time on their own in the garden is still welcome. The times outlined here are only intended as a guide for those who would like to join the group but who can only attend part of the day.

Let's hope that by June we'll be relaxing in warm shade rather than huddling in warm coats. Do ring me on 01295 788770 if you'd like any further information.





Registered Charity 1026753

O.F.S.T.E.D APPROVED

MONDAYS, WEDNESDAYS, THURSDAYS, FRIDAYS

9.00 - 12.00

SIBFORD GOWER VILLAGE HALL

FOR 2 ½ - 5 YEAR OLDS

ONLY £4.00 PER SESSION

NURSERY VOUCHERS FOR 3 AND 4 YEAR OLDS ACCEPTED

FRIDAY SESSION DEDICATED TO  
RISING 4'S & 4 YEAR OLDS ONLY  
TO HELP PREPARE THEM FOR SCHOOL

SPACES NOW AVAILABLE FOR FRIDAYS

CONTACT OUR SUPERVISOR  
JULIE BRUGGENWIRTH ON 01295 788594  
FOR FURTHER INFORMATION

## Triple M Services

Quality Repairs TO  
All Makes Of Car And

Light Commercial  
Vehicles

MOT Prep

Welding

Call M.J Harris

on

Swadcliffe 780614

## *Méli-Mélo Cuisine*

*French & English  
Country Cuisine*

*Stylish Innovative fresh food*

*We Specialize in*

- Marquee Weddings
- Business Functions
- Dinner Parties
- Banquets
- Hot & Cold Buffets
- Birthdays...

*Traditional Designed  
Menus*

Old Plush Mill House, West Street, Shutford

**01295 788598**

## **Oddjob**

CARPENTRY

PLUMBING

ELECTRICS

HEATING INSTALLATION

KITCHEN & BATHROOM FITTING

SECURITY

FOR A COMPREHENSIVE AND RELIABLE  
LOCAL SERVICE

**HUGO SEELY 01295 780355**

FREE NO-OBLIGATION ESTIMATES

No job too large

Excellent local references available



# Sibford Horticultural Society

Listed below are the various meetings which will take place up to and including the show. Further reminders will be issued as time progresses.

**9th May.** Gerald Sinclair of A Nursery Further Afield will give a talk on 'Hardy Geraniums' of which he holds the national collection. His meeting will be held at Sibford Village Hall at 8 o'clock.

**19th May.** A plant sale will be held at the Baseby's, Temple Lodge between 10.30 and 12 noon. Contributions welcome on the day or to a committee member beforehand.

**13th June.** A garden visit to Whichford. Please meet at the Green for 7 o'clock.

**16th June.** Coffee morning at Judith Hitching's, Gower Close from 10.30 to 12.00

**18th August.** The Annual Show in the marquee and Village Hall with entries at the Surgery on the Wednesday before at a time to be advised. Residents of Sibford and Epwell qualify for entry in the show.

Please come along and support all these events and ensure the continuation of the Society under its new and expanded committee.

Help your body to keep itself healthy

**Swedish Therapeutic Massage  
and Aromatherapy**

gives general toning  
and relief from stress and aches and pains

Call 01295 788398 for details - ask for Sue

**MEADOWCROFT**

**SECRETARIAL SERVICES**

Tel. 01295 780741 + *AnsaFone*

(Evenings/Weekends

Tel. 01295 788106 + *AnsaFone*)

Letters, Manuscripts,  
C.V's, etc.

**LASER PRINTER**

***Photocopying/ Fax***

**VERY COMPETITIVE RATES**

**Collection/Delivery**

**Service if required.**

## The Tuesday Bike Ride is back

Every Tuesday from Lanes End Corner (Ferris Crossroads) at 7 pm.

All abilities and enthusiasms catered for. For more details

Tel. Joanna Gilkes on 788190 or Adrian Lamb on 780380



## Church Services

Society of Friends Sunday at 10.30 am  
 Methodist Sunday at 11.00 am  
 Roman Catholic Mass Wroxton Sunday at 9.00 am  
 Brailes Sunday at 11.30 am  
 Baptist Hook Norton Sunday at 10.30 am

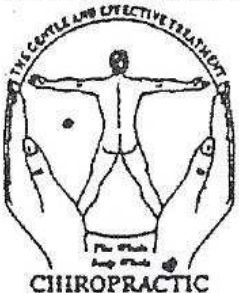
Church of England, Holy Trinity, Sibford Gower. May Services.  
 Sun 6th Benefice Eucharist 10am at Shutford  
 Sun 13th 9.30 am Family Service  
 Sun 20th 9.30 am Holy Communion  
 Thu 24th 8 pm Benefice Eucharist at Broughton for Ascension day  
 Sun 27th 9.30 am Holy Communion

June Services (part)  
**Fri 1st 8pm Benefice Eucharist to celebrate 25 years with  
 Timothy Wimbush as our Vicar.**  
 Sun 3rd Deanery Service 10 am, St Marys, Banbury

### Christian Aid Austerity Lunch

Monday 14th May at the Rectory from 12.30 until 2.00pm .  
 Details on 780555

MCTIMONEY-CORLEY



**John  
 Mulley**  
 CHIROPRACTOR

DC MBAAC

THE OLD POST OFFICE,  
 SIBFORD GOWER, BANBURY,  
 OXON. OX15 5RT.

Tel. (01295) 780629

### Children's Day Nursery, Epwell



- Full day care for children 2½ to 5 years
- Full and part time places
- Open Monday to Friday 9.00am - 4.00pm.
- Excellent Ofsted Report

The nursery provides excellent opportunities for children to explore and learn at their own pace under the guidance of trained, experienced and caring staff.

For further information ring Julia  
 Tel: (01295) 780580

INTRODUCING THE AWARD WINNING

# NOAH'S ARK

PAINTING  
 COMPANY

Inspiring a generation to say NO to magnolia!

EVERY FORM OF  
 INTERIOR AND EXTERIOR  
 PAINTING AND DECORATING

\*\*\*\*\*  
 CLEAN, TIDY & EFFICIENT  
 \*\*\*\*\*

DELIGHTFUL DECORATION BY POLITE PAINTERS

FREEPHONE

## 0800 7311165

Approved by **BOLEX**

featured in House Beautiful, Perfect Home,  
 Inspirations, BBC Good Homes show and Central TV's 'Our House'.



# Sibford Bus Services

## Free Bus Service

To Chippy Wednesdays May 2nd, 16th and 30th Departs 10 o'clock  
 To Banbury Thursdays May 10th and 24th Returns 12 noon  
 Pick up points are; The Colony, High Meadow, Crossroads, Village Hall.

### Stage Coach 480 Shipston - Sibford - Banbury

	Mon~Sat (M-S) Not Sat (NS) Sat Only (SO)				
	M~S	NS	SO	M~S	NS
Shipston	-	-	9.20	-	-
Sibford Gower Crossroads	7.30	9.00	9.45	11.45	12.45
Sibford Ferris School	7.32	9.02	9.48	(11.38)	(12.38)
Banbury Bus Station	8.00	9.30	10.15	12.15	1.15
	M~S	SO	NS	M~S	M~S
Banbury Bus Station	11.15	12.15	12.15	2.15	6.00
Sibford Ferris School	11.38	12.47	12.38	2.38	6.23
Sibford Gower Crossroads	11.40	12.50	12.40	2.40	6.25
Shipston	-	1.15	-	-	-

### Cherwell Villager 55 Sibford ~ Banbury

Wednesdays Only	Outward	Return
Sibford Gower	9.55 am	1.55 pm
Sibford Ferris	9.57 am	1.53 pm
Hook Norton	10.15 am	1.45 pm
Bloxham	10.35 am	1.15 pm
Banbury	10.50 am	1.00 pm

### Cherwell Rural Dial-A-Ride Scheme

A mini bus with tail-lift to take **elderly or disabled people** and escort to Banbury (max fare £1.20)

Door-to-Door service. Book at least one day in advance.

Operates on **WEDNESDAYS ONLY**.

Phone 263777 for more details.



# Calendar of Events

## May

- Tue 1st Friendship Club AGM. 2pm Village Hall p7  
Wed 2nd Gower Annual Parish Meeting.  
Sun 6th Collectables and Car Boot Sale. 12-3pm V.Hall p6  
Mon 7th Ferris Parish Council Meeting. Friends School.  
Tue 8th W.I. Resolutions Meeting. p5  
Wed 9th Mobile Library in Sibfords and Burdrop (2.25-4.20pm)  
Wed 9th Horticultural Society talk. 'Hardy Geraniums' p17  
Wed 9th Swalcliffe Society talk on Maps. p9  
Tue 15th Friendship Club trip to Wedgewood Pottery. p7  
Tue 15th LEO Club Meeting at The Red House. p4  
Tue 15th North Oxon Guild of Weavers Spinners & Dyers talk on 'British Basket Making Today' Details on 251088  
**Tue 15th Deadline for contributions to the June Scene**  
Wed 16th Village Hall AGM. 8pm. Village Hall p6  
Thur 17th Sibfords Society Talk. 'Tysoe Fire Service' 7.30 p9  
Sat 19th Horticultural Society Plant Sale. 10.30-12 noon p17  
Wed 23rd Mobile Library in Sibfords and Burdrop (2.25-4.20pm)  
Sat 26th Jumble Sale in the Village Hall at 2pm p14  
**June (part)**  
Sun 3rd Collectables and Car Boot Sale. 12-3pm V.Hall p6  
Tue 5th Quiet Garden Day at Handywater. p15  
Tue 5th Friendship Club Trip. p7  
Tue 5th Methodist Chapel Anniversary Service. 7.30pm p12  
Wed 13th Horticultural Society Whichford Visit. p17  
Sat 16th Horticultural Society Coffee Morning. p17  
Tue 19th Friendship Club Meeting 2pm Village Hall. p7  
Sat 23rd Village Fayre. p6  
Sat 23rd Merchant of Venice - Leasowe House. Tel 780569

## Sibford Scene

Editor; Adrian Lamb. Grounds Farm, Sibford Ferris. 780380  
e-mail [adrian.lamb@care4free.net](mailto:adrian.lamb@care4free.net)

Treasurer; Timothy Wimbush, The Rectory, Acre Ditch, S.Gower  
780555

Advertising; Ivor Hopkyns, Elmridge Farmhouse, Sibford Gower,  
Banbury, Oxon. OX15 5RT. Tel 788367