



# SIBFORD SCENE

## Harvest Bounty

October 2000

No. 227

Harvest Thanksgiving Service and Supper  
Saturday 30 September at 5.30 pm

---

The Mousehole Cat  
Puppet Theatre at the Village Hall  
Saturday 28th October 3 pm

---

The Village Hall Quiz  
Saturday 28th October starting at 7 pm.

# Nature Notes

**July 24th.** During this drier spell of weather thrushes have been taking a lot of snails. The concrete paving slabs that we set into the lawn to prevent wear are littered with the rather beautiful shells of the yellow and brown banded ones which must have a better flavour than the brown garden snail.

**July 27th.** My brother watched a beetle crossing the road in a dead straight line so he put the bulbous rubber top of his walking stick on that line to see what it would do. When it got to the stick it stopped to think about the problem. It then walked round the tip until it came to its line and continued on its straight course again. He repeated this experiment several times with the same result. It must, I suppose, have been following a track marked by some scent or some other means.

**Aug 4th.** My son, who lives in Culworth, heard something scratching around in the gutter of his two storey house so he shone a torch on to the gutter and was surprised to see the nose and front feet of a mole appear over the edge. How it got up there is a mystery. The downpipe is made of steel which could be rust roughened on the inside which might give some grip for a mole; even so with the first seven feet being vertical it would be a difficult route. I think it more likely that it was carried on to the roof by an owl as moles do surface more often at night.

**Aug 6th.** There has been a flock of about 40 house martins over the village recently and today some of them were swooping up to the wall under the eaves of a house where they nested until 1997. Hopefully they are thinking about coming back next year.

**Aug 19th** I have now heard of flycatchers nesting in each village. In the Gower the young having flown were being fed around some gardens while in the Ferris they have managed to hatch off their third clutch of eggs having lost the first two clutches to predators, probably squirrels. It will be very bad luck if this hatch suffers the same fate.

**Aug 27th** This afternoon we watched a leaf cutter bee that was carrying a piece of leaf, neatly rolled up, between its legs. After looking round for a while it went into a hole under the roots of a plant where it would use the piece of leaf to make a cell in which to lay an egg. We later found

that the young leaves of our favourite rose had lost some neatly cut pieces.  
**Aug 28th** A song thrush died when it flew against a window of our bungalow this evening.

**Aug 30th** Another song thrush has suffered the same fate as the one two days ago but this time it was at 10am instead of 8pm. I went straight out to find a cat already on the scene. I expect the cat chased it and that it made for the window as a way of escape.

**Sept 13th** This evening I went with a group to look for bats with the help of detectors that converted the squeaks made by the bats into a series of clicks. By the tone and rhythm of the clicks the leaders were able to tell us what sort of bat we were hearing. The highlight of the evening, in more ways than one, came when having detected a daubentons bat powerful torches were switched on to follow its flight only a foot or so above the water dipping down every now and again to scoop up insects that were on or just above the surface. With their white bellies they looked very like house martins in the torchlight.

**Sept 16th** During the blockade of fuel depots very little has been said about why the tax on fuel had, until the last budget been going up faster than inflation. It was part of a package of measures to meet the commitment we made at the Rio Summit on the Environment to reduce carbon dioxide emissions to the 1990 level and now with sea levels rising and the polar ice cap thinning to the extent that a lake a mile long has appeared near the north pole, we are beginning to feel some of the effects of global warming. Perhaps the next generation will be able to book a cruise over the north pole instead of making the hazardous journey over the ice.

## Table Tennis

The AGM of Sibford Table Tennis Club was held on Aug. 24th. We are again hoping to put four teams in the Banbuy League, although we could do with a few more players & particularly one who could play regularly. The teams match nights will be Tuesday for the A & B teams and Thursday for the C & D teams. The subscription has gone up to £20 this year with each team paying £45 towards the room cost. Home matches are played in the Mission Room. Would anyone interested in playing please contact the secretary, Ina Lamb on 780357

# The Sibfords Society

Our autumn programme of speaker meetings is now under way. Nigel Hammond came to talk to us about Victorian England for our September meeting and it was good to welcome him back to Sibford.

Peter Stowe, an old scholar from Sibford School whose parents used to keep a shop in Bonds End Lane during the 1930's, spent some time in Sibford recently. His father kept a market garden, and later built the house at Bramley Close. His garden produce was sold in their shop and also in Butcher's Row in Banbury. He brought some interesting photographs and we will need your help trying to identify some of the Sibford folk in the pictures.

Our October meeting will be in the Village Hall on Thursday 19 October at 7.30pm when our speaker will be Oliver Lane who is the Administrator for Upton House. We look forward to having a personal insight into the life and working of this local National Trust property. We do hope you will be able to come. Non members are always welcome.

## Oddjob

CARPENTRY

PLUMBING

ELECTRICS

HOUSEHOLD REPAIRS

SECURITY

HEATING INSTALLATION

KITCHEN FITTING

FOR A COMPREHENSIVE AND RELIABLE

LOCAL SERVICE

**HUGO SEELY 01295 780355**

FREE NO-OBLIGATION ESTIMATES

No job too large

Excellent local references available

## Méli-Mélo Cuisine

French & English

Country Cuisine

*Stylish Innovative fresh food*

*We Specialize in*

- Marquee Weddings

- Business Functions

- Dinner Parties

- Banquets

- Hot & Cold Buffets

- Birthdays...

- Wedding Reception

- Menus

Old Plush Mill House, West Street, Shutford

**01295 788598**

Holistic Aromatherapy Practice  
Virginia Bennett SRN MHAf

Ginny has recently qualified as an Aromatherapist, gaining a Diploma from the Cotswold School of Clinical Aromatherapy.

She is setting up her own practice offering massage and treatments using essential oils, which are known to be beneficial to health.

For further information do contact Ginny on 01295 780373

# Scouts

1<sup>st</sup> the Sibfords Scout Group



For some years the Scout Association has welcomed girls into the Movement, but it has only been in the past few months that 1<sup>st</sup> the Sibfords Scout Group has been in a position to accept girls in every section of our group.

From the 1<sup>st</sup> September we are able to welcome girls from 6 to 14 to join our thriving units of Beavers, Cubs and Scouts. All three sections meet on a Friday evening at the Village Hall.

If you would like further information please contact Keith Hicks, Group Scout Leader on 01295 780259 or email [keith.hicks@btclick.com](mailto:keith.hicks@btclick.com).

## *Reflexology* *Remedial Massage*

**Elizabeth Webber**

MAR.LCSP (Assoc)

Godswell Natural Therapy Centre  
Bloxham, Banbury

Tel: 01295 - 788101

## **RED HORSE FUELS**

*(R. C. Hoggins)*

Windmill Farm, Oxhill, Warwickshire

Telephone: 01926 642832

Solid Fuels and Logs  
Heating Oils  
Bottled Gas and Paraffin  
Peat, Compost, Growbags, Soil,  
Sand, Gravel, Cement  
Garden Fencing  
Lawn Mowing/Garden Tidying

Phone for more details

## SIBFORD BROWNIES

I wrote in the last issue of The Scene that, sadly, Sibford Brownies were closing.

I am now very pleased to say that Mrs. Sabin from Mill Barn, Hook Norton (Tel: 788421) has agreed to take over and, by the time you read this, they should be up and running again.

This is very good news and brownies will be back on Tuesdays at 5.15 p.m in Sibford Village Hall.

The joining age for brownies is 7 years and all enquiries should go to Mrs Sabin at the above address and phone number.

Vivienne Scouse.

## SIBFORD BROWNIES

As you may already know, Brown Owl and Tawny Owl both retired in July after many successful years running the Sibford Brownie pack. They had been unable to find anyone to replace them, and as all local packs had long waiting lists it seemed that Sibford girls would not have the opportunity to attend Brownies at all.

Sue Sabin has elected to run the Sibford Brownie pack with the assistance of parents on a rota basis. Meetings are in the Village Hall at 5.15 each Tuesday during term-time. Girls can join from age 7 and enjoy a wide range of activities, games, songs and achievements. Please contact Sue Sabin on 788421 for more details.

If you feel you could offer help at the meetings or have a special interest you'd like to share with the girls please contact Sue on the above number.

We were all sad at the thought of the community being without a Brownie pack, we hope the community will play an active role in the future of Sibford Brownies and support Sue and the Mums in their efforts.

Ainzie Conboy

# Guide Dogs for the Blind Association COFFEE MORNING

in aid of G.D.B.A.

Wednesday November 1st

10.30 - 12.30

Westerways Sibford Ferris

Bring and Buy, Cakes & Jams Raffle  
Sale of GDBA Christmas Cards, gifts etc.  
(used stamps & aluminium foil gladly received)

## A Big Thankyou

for all the cards and kind words you had for me following the death  
of my father.

Nick. (postman for Ferris and Burdrop)

INTRODUCING THE AWARD WINNING

# NOAH'S ARK

PAINTING  
COMPANY

Inspiring a generation to say NO to magnolia!  
**EVERY FORM OF INTERIOR  
AND EXTERIOR  
PAINTING AND DECORATING**  
CLEAN, TIDY & EFFICIENT  
DELIGHTFUL DECORATION BY POLITE PAINTERS

FREEPHONE  
**0800 7311165**

Approved by **BULOX**

featured in House Beautiful, Perfect Home,  
inspirations, BBC Good Homes show and Central TV's 'Our House'.

## S. WEBBER BUILDING & JOINERY

Est. 1976  
Specialising in :-  
Loft conversions  
House renovations  
Extensions  
Staircases  
Windows & Doors  
Conservatories  
From design to completion  
TEL: 01295 788 112  
MOBILE: 0467771380  
E-MAIL:- SW1BUILD@AOL.COM

## The Churches Bike Ride

A lovely Saturday dawned, which was a relief after the continuous rain of the previous day. Our small group of five (Joanna, Ross & Megan Gilkes, Jamie Randall and Arnold Lamb) gathered and we set out to Wigginton to bag our first church and chapel of the day, alas someone had beaten us to being the first to sign in. (The lady signing in at the church had memories of being shown round Sibford meeting house by a pleasant man which must have been John) We headed on towards Swerford where we saw several more cyclists arriving. After a steady climb and a bit of downhill we came to Great Tew. Major clearing was taking place on the lengthy path to the church so we had to pick our way through felled laurel, chainsaw wielding men and the shredder which was blowing the wood chips quite a distance. Not a restful place to visit on that day. Little Tew was much more peaceful. We had a lovely run down into Enstone and then on to Charlbury which boasts five churches of different denominations. We stopped on the green and had our sandwiches. The conker tree took a battering with shoes being thrown, one of which inevitable got stuck and caused great hilarity trying to get it down. We located all the churches and continued on to Spelsbury and Chadlington. Coming out of Chadlington we had a two mile steady climb in the warm sunshine before getting our reward of a nice run down to Churchill to gain three more churches. (The old church is a tiny building struggling to seat more than 20) We rode along the top of the hill running into Chipping Norton with good views over the countryside and of the mill with its distinctive chimney. Three churches and an ice cream were picked up in Chippy. The lady at St. Marys thought she was in for trouble as the lads sped up to the door with great back wheel skids making a very satisfying noise on the gravel and the look of relief on her face when the 'oldies' caught up was considerable! At this point it was decided to leave the fourth church unvisited in Chippy hoping to have time to reach Sibford before the 6 o'clock deadline. So it was full speed ahead to Over Norton and Great Rollright. A speedy chase along the top and into Hook Norton for the two churches where we clocked in at 5.25. We tried to get quickly to Sibford but I never realised just what a drag it was from Hooky to the Firs Garage, then down to Temple Mill and finished with a push up the Colony to reach the meeting house where we



were told there hadn't been a visitor since 2.55. We visited the chapel and the church to make a grand total of 27. On our route only 3 churches were unmanned. It is always nice to see some welcoming people at the churches and the children also find it nice stocking up on biscuits, chocolate and squash at each church even if they are only a hundred yards apart. Well done to the other villagers who took part. The only sad aspect to the day was that overall there were fewer people taking part as visitor numbers were down at all the churches we went to. It is an interesting way to spend all or part of the day. Try it next year!

Joanna Gilkes

---

**Oxfordshire Village Shops Association** is pleased to announce a new competition aimed at rewarding good service to the community from rural retailers.

Shoppers are being invited to nominate their local store for the top prize of a magnum of champagne (and hopefully lots of free publicity!)

Nominations stating;

the store name & address the nominators name & address reasons for the nomination should be sent to:

Helen Datson, Village Shops Fieldworker at 1 Church Lane, Spelsbury, Chipping Norton, Oxon, OX7 3JR to arrive no later than 30th October 2000

The ten stores receiving the most nominations will be visited by a mystery shopper followed by the judging panel.


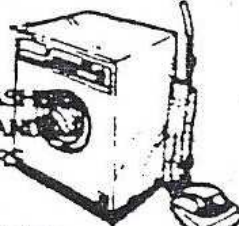
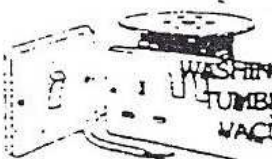
Judging will take place during November with the winner being announced in early December.

Further details from Helen Datson

01608 810098

[helenldatson@aol.com](mailto:helenldatson@aol.com)

**ADDERBURY  
DOMESTIC APPLIANCES**



WASHING MACHINE · DISHWASHER  
TUMBLE DRYER · COOKER AND  
VACUUM CLEANER REPAIRS

**Eric Wyatt**  
6 Round Close Rd. Adderbury  
Tel. No. (0295) 810116

## LOCAL OLDER PEOPLES PANELS

A chance for older people to advise and influence.

Feel nobody listens? Now people over 50 have a chance to be heard through five Local People's Panels around the county. The new scheme aims to feed their opinions into policies as organisations seek their views on services. It's a chance to turn ideas into suggestions by getting a word in edgeways before big decisions are taken. The independent Local Panels are being set up by Age Concern Oxfordshire City and County with support from the Oxfordshire Better Government for Older People (BGOP) project. They will advise local authorities, health services and voluntary services.

More people are needed for the Local Panels and those that do volunteer will be offered appropriate training where needed to help them feel at ease in the process. All out of pocket expenses will be paid. To find out more contact Gill Martin at Age Concern, The Lodge, Rivermead Centre, Abingdon Road, Oxford OX1 4XD (01865 240619)

*The Stag's Head, Swalcliffe*

*Tel: 01295 780232*

*Our Butcher's the best*

*Our Baker's not bad either*

*And we're working on the candlestickmaker!*

**UNDER NEW OWNERSHIP**



*Proprietors: Julia and Ian Kingsford*

*Fabulous Food*

*Superb Real Ale and wines*

**AL FRESCO DINING IN OUR NEWLY LANDSCAPED GARDEN**

**TRADITIONAL SUNDAY ROAST LUNCH**

**PIQUANT DISHES A SPECIALITY**

**WE CURRENTLY HAVE VACANCIES FOR WAITING,  
KITCHEN AND BAR STAFF FOR THE SUMMER/ ALL  
YEAR ROUND. — PLEASE PHONE FOR DETAILS.**

## COMPTON LANE NURSERIES

Little Compton,

Nr Moreton-in-Marsh

Tel:- 01608 674 578

We offer an exciting and diverse range of alpines and herbaceous perennials, many of which are not widely available. A sales area surrounded by planted borders offers interest and ideas all year round.

The alpine garden allows visitors to see some real gems growing in the open and under glass and houses the Joe Elliot collection.

Open Tuesday to Saturday  
10am to 5pm February to  
October

Playarea Jumble Sale  
Mission Hall, S.Gower  
(almost opposite the Wykham Arms)  
Saturday 21st October

12 noon to 2pm

Please leave jumble on the day or ring Joanna Gilkes 788190 if you would like it collected, or leave it with Bernie Jones at 7 Cotswold Close.

The Playarea is at the far end of Cotswold Close and has swings, slide, roundabout, sand diggers and rocking animal. It has recently had more safety surfaces added so please go along and enjoy it.

---

### HOLY TRINITY CHURCHNEWS

First of all, a reminder about the Harvest Thanksgiving Service on Saturday, 30th September at 5.30, followed by a Bring and Share Supper in the Endowed School, where everyone will be made most welcome.

The Annual Church **Christmas Bazaar** will be held on Saturday, 25th November. Would you please make a note of this in your diaries. Maureen and Ian Warden who organised this event last year have agreed to do so again and they would be grateful for offers of help and of gifts. Please do contact them at 9 Bafey Close, telephone 788252.

There will be a confirmation service at Swalcliffe Church on the 3rd December. The new Bishop Colin will be attending. If anyone would like to make up lessons, please contact the Rector, who will arrange suitable times - 780555.

---

The Deadline for contributions to the November Sibford Scene will be Tuesday 17th October.

Contributions to the Village Shop or Editor please.

If all contributors could get their copy in promptly it would help me as I will be trying to sort out the Village Hall quiz questions that same week.

Thankyou. Adrian Lamb

## Letter from the Village Hall Committee

The Collectables and Car Boot sales in August and September made £143.80 for Village Hall funds. Again our thanks to all who donated items for sale. Next sale is Sunday 1st October.

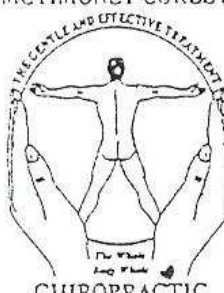
We do hope you will support us by buying tickets for the childrens puppet show "The Moushole Cat" on Saturday 28th October at 3 p.m. we are promoting this entirely on our own and it will cost £397 to stage. Tickets are £2 for children 4 years and over and £4 for adults. The puppets tell how the village of Mousehole was saved by a fisherman and his cat. Two performers tell the story using carved puppets, coloured shadows, live music, song, sound effects and audience participation, set in a beautiful stage of sea, sky and the little Cornish village. It is for any age from 4 to very grown up, based on the award winning book by Antonia Barber. PuppetCraft, who bring this story to life, has performed nationally and internationally since 1990, creating puppet theatre full of humour, drama, music and visual magic.

On the evening of Saturday 28th October, 7.0'Clock start, it is the Annual Village Hall Quiz. Our usual format i.e. teams of up to 6 people, Supper provided, wine and soft drinks available at the bargain price of £3.50 per person. Team entries please by Oct 21st to Adrian or Helen Lamb 780380 Joanna Gilkes 788190 or Muriel Chandler 780025.

The Heart of England Jazz Band will be back in the Village Hall on Saturday 2nd December.

The next public auction will be at the Village Hall on Saturday 21st October at 2.30pm. Viewing from 12 noon. Refreshments available. Telephone 01608 662587.

MCTIMONEY-CORLEY



**John Mulley**  
CHIROPRACTOR

DC MBAAC

THE OLD POST OFFICE,  
SIBFORD GOWER, BANBURY,  
OXON. OX15 5RT.

Tel. (01295) 780629

**Bed & Breakfast**  
**AGDON FARM**  
**Nr Brailes**  
Comfortable rooms  
in old stone farmhouse  
**Tel: Maggie Cripps**  
**01608 685226**

# Friendship Club

We would like to thank Mrs. Puddle for inviting us to her home and providing such a delicious tea. Also thanks to Mrs. Tanner who gave us a lovely tea and raised £81 towards the clubs funds with a raffle and several stalls. We have also been to Inkberrow for lunch, visited a farm shop and then spent an hour Stratford when the sun shone for us.

Programme for the coming months;

**Tuesday October 3rd.** Skittles match and buffet meal at Long Itchington.

**Tuesday October 17th.** Village Hall at 2pm when the speaker will be Mr. W. Wyntt.

**Tuesday October 24th.** Village Hall 2pm. This will replace Mrs. Fowlers Garden Party which would normally be held in the summer.

**Tuesday November 7th.** Turners at Northampton for their Christmas Show. Lunch and tea there.

**Tuesday November 21st** Village Hall at 2pm when we have a speaker from the St. Johns Ambulance.

**Tuesday December 12th** Chipping Norton Pantomime - Dick Whittington - 5pm performance.

**Tuesday December 19th** Christmas Tea in the Village Hall.

Why don't you join our club and enjoy some of these lovely outings? Membership £5.00 per annum, free tea and cake when we meet in the Village Hall.

STUART and JOYCE

welcome you at

THE GATE HANGS HIGH

Hook Norton

Traditional Ales in our friendly pub  
with excellent food available in the  
extended restaurant

Evening Bookings Advisable

Telephone 01608 - 737387

BAR MEALS ALSO AVAILABLE

Open Seven Days per Week.

Bar only on Sunday evenings.

The Gate Hangs High & Hinders None,  
Refresh & Pay and Travel On.'

DAVID RANDALL

1 CROSS COTTAGE, SIBFORD GOWER, BANBURY,  
OXON. OX155RP

FENCING

ALL TYPES OF FENCING, GATES AND GARDEN  
WOODWORK SUPPLIED, ERECTED AND REPAIRED.

HEDGE CUTTING

ALL TYPES AND SIZES OF HEDGE CUT, WHETHER  
IT'S AN ANNUAL TRIM OR A DRASTIC REDUCTION,  
WE CAN HANDLE IT.

TREE WORK

GARDEN TREES TOPPED, RE-SHAPED, DEAD WOODED  
OR FELLER IF REQUIRED.

CALL NOW FOR FRIENDLY ADVICE  
AND A FREE QUOTE.

01295 780342 / 07831 571176

Peter and Margaret Whittle invite you to  
the 8th annual sale of their

# Cottage Crafts

\*\*\*\*\*

FRIDAY/SATURDAY/SUNDAY  
OCTOBER 27th/28th/29th

\*\*\*\*

## MALCOLM'S COTTAGE TADMARTON

(B4035 Banbury to Shipston road)

**10am - 5pm**

\*\*\*\*\*

PETER & MARGARET's crafts include:-  
flower clocks/patchwork/hexagonal trays/fudge  
cravats & long scarves/black sheep/herb pillows  
small decorated Christmas trees/tea boxes/jams  
snowy owls/traditional bears/sleep-over bags  
texts on silk/puppets/hand carved bellows  
...and more & more ,all designed & created at the cottage

as well as

URSULA's handcrafted jewellery & buttons  
PADDY's award winning Activity Play-Range of  
educational slot together toy houses, gardens & barns

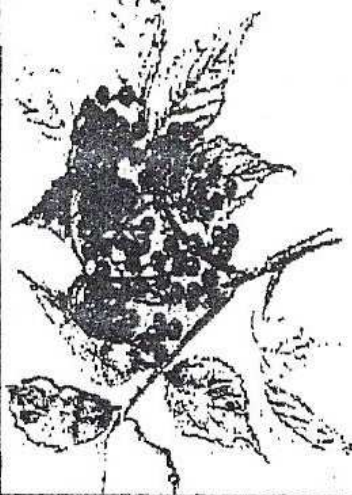
\*\*\*\*

**BRING & BUY CAKE STALL**

\*HOMEMADE SOUP & A BREAD ROLL £2\*

\*Admission £1.50 including refreshments\*  
in aid of

**The Katharine House  
Hospice, Banbury**  
parking ...well sign posted



# An Autumn Medley

Swalcliffe PCC presents an Evening of Musical Entertainment featuring words and music for Autumn, at

**7.30pm on Saturday October 7th  
at Swalcliffe Parish Church**

Popular Songs for Autumn  
*Mike Webber with Nathan & Keri  
Harwood on vibes, clarinet & alto sax, flute*

Classical, Folk & Traditional Songs  
*with vocalist Wendy Allitt*

Organ Music from JS Bach & Saint-Saens  
*played by Clive Tuck*

Poetry with a Seasonal Theme  
*selected by Anita Harris*

**Ticket includes a glass of wine or soft drink  
and light refreshments during the interval.**

Adults £5; Concessions £3; Families £10  
(2 adults & up to 2 under-14s)

Tickets available from:  
The Stag's Head, Swalcliffe  
Andrew Harter (01295 788001)  
Anita Harris (01295 780614)

Proceeds will be devoted to church development.



Registered Charity  
1026753

O.F.S.T.E.D APPROVED

MONDAYS, WEDNESDAYS, THURSDAYS, FRIDAYS  
9.00 - 12.00  
SIBFORD GOWER VILLAGE HALL

FOR 2 ½ - 5 YEAR OLDS

ONLY £3.50 PER SESSION

NURSERY VOUCHERS FOR 3 AND 4 YEAR OLDS ACCEPTED

EXCELLENT LINK WITH LOCAL PRIMARY SCHOOL

ENCLOSED PLAY-AREA AND AMPLE CAR-PARKING SPACE

COME AND SEE US  
OR

CONTACT OUR SUPERVISOR

JULIE BRUGGENWIRTH ON 01295 788594

FOR FURTHER INFORMATION

Bridge at the George Hotel, Brailes  
Fortnightly commencing November 7th at 7.30pm  
£1.50 per session  
Friendly atmosphere  
Competent level of playing an asset  
Queries to Mrs Jean Wingfield Tel. 01789 740139

## WELCOME TO SIBFORD

If you are a new resident of Sibford and have not yet received a copy of the "Welcome to Sibford" booklet, please telephone **Maureen Warden** on Swalcliffe 788252 (Gower or Burdrop) or **Mary Mills** on Swalcliffe 780248 (Ferris) and a copy will be delivered to you. The information will help to make you feel at home - by acquainting you with the services, schools, clubs and societies that are currently active in the villages.

This month we say "welcome" to **Jane McClenaghan** and **Luke Adams**, who have recently moved into Barthrop Cottage, Burdrop. They had previously spent nine years in Reading, where they met at the university. Luke is an archaeologist, working in Oxford, and Jane is a nutritionist, working in Birmingham. They both enjoy cycling, reading and walking, and Luke writes his own computer music. They have already decided that Sibford is going to be a good place to live, and I think we would all agree with that!

-----  
**Mike and Sue Lovatt** have moved to Briar Cottage, The Colony, from Wigginton. They have four children, the youngest two still living at home. Marc is married and lives near Hungerford; Jo, a doctor, getting married later this month, lives in Ringwood; Vanessa is taking A-levels at Malvern Girls' College; and Edward is taking G.C.S.E's at Bloxham School.

Mike is an Insurance Broker with offices in Banbury and Brackley; Sue is a part-time school secretary.

The family's main interests are their animals - horses, sheep, chickens, cat and dog, and they are looking forward to enjoying the garden at Briar Cottage and joining in village life at Sibford.

-----  
**Julia and Graham Sale** have moved into Little Acre, The Colony, from Hook Norton. Graham works for the World Health Organisation and Julia is not working at present. They have four children: Deborah, who is newly married; Clare, who has just had her first baby and lives in Cornwall; Nicola, who is almost 18 and is at Banbury College for A-levels; and James, 13, who has just started at Rugby School. James plays rugby for Chipping Norton Under-14s and also for Oxford County.

At present they haven't any time for hobbies - they are far too busy doing up the house and sorting out the garden.

Continued on page 17



It has been a hectic few months since my move to Sibford Ferris. When I slow down - (to a gallop) I hope to become involved in local interests when time permits. For now, my priority is to get the two bungalows converted into a single dwelling, now that planning permission has been approved indeed the extension footings have been dug as well.

To me, it is important to support/use local artisans/craftsmen and materials as I want "Orchard End" to blend in with the area. I have a collection of classic cars and motorcycles, too many in fact, and some will be found new homes shortly. I am impressed with other interesting vehicles in this locale, the "Tatra" especially so, and has to be almost as rare as my "Scimitar Sabre" of which 60 or so were made in that format.

Once the improvements are completed, my 3 cats and I will be joined by my future wife, Edy, and her son Adrian, who already attends Sibford School. The family will be swelled by her dog and cat and we hope to get some pheasants - they'll be quite safe as we are vegetarians!

My cats have eventually settled in (though one went AWOL for a few days) having been prised from their home in Dunchurch, where they lived with me in my remote cottage at the end of a bridleway with Cawston Woods behind. I'm still getting used to seeing more people than I'm used to but I don't miss the noise of far away traffic.

My move to Sibford has also led to a career change I am now Editor/Proof Reader for a Long Hanborough company handling theological, judicial, research & political publications and is a far cry from my years spent in advertising in London.

George Sampford

### GRATEFUL THANKS

We would like publicly to acknowledge the help and care given to Anne Stephens, and to us, during the last days of her life.

The support of the doctors and nurses of our surgery, the District and Macmillan nurses and the relief night nurse provided by Shipston Home Nursing, as well as two excellent Australian nurses from Oxford Aunts was a truly remarkable team effort, which enabled Anne to remain, as she wished, in her own home.

To this must be added the care and concern of Timothy and Erica Wimbush and the thoughts and prayers of many other people in and outside the village.

Nobody could have asked or hoped for more, or even as much. We are truly grateful.

Susannah Phillips, Tina and Colin Frith

## SHORT COURSES IN INFORMATION TECHNOLOGY

### From Oxford Brookes University's School of Computing & Mathematical Sciences

An exciting new programme of short courses in information technology begins in October, offering you the chance to update your skills in all the latest computing technological advances. Whether you're looking for professional or personal development, or just fancy finding out what all the fuss is about, there's something for you.

Courses vary in length from 6 to 9 hours (prices from £60-£90):

*Introduction to Programming*

*Introduction to IT Skills*

*Introduction to the Internet*

*Introduction to Microsoft Word*

*Introduction to Microsoft Excel*

*Introduction to C*

*Introduction to Multimedia Systems*

*Introduction to Microsoft Access*

*Introduction to Java*

*Building a Web Presence*

*Introduction to Microsoft Visual Basic*

*Introduction to Desktop Publishing using Microsoft Publisher*

Teaching will be by Brookes tutors from the School of Computing & Mathematical Sciences, delivered in the University's own PC laboratories at Gipsy Lane, Headington.

For more information and a copy of the University's Short Course Directory, please contact Lindsay Wells on 01 865 484749.

---

## Dialability

Our Mobile Information Unit will be in Banbury on Wednesday 18th October and Wednesday 19th November. We shall be parking in Bridge Street outside Marks and Spencer and look forward to seeing you there between 10.30am and 3.30pm.

We can offer all sorts of advice and information on any topic to do with disability. It does not matter whether or not you are disabled yourself, a carer, a friendly neighbour or a relative..... or just someone who wants to know what goes on in our van ..... we really would like to meet you, so do call in and say "hello"

# W.I. NEWS & INFORMATION

A warm welcome awaited members to the September meeting ! Being unfamiliar with required "off" switches, windows were opened and soon all was calm and cool.

The president being on holiday, V.P. Greta Baadsgaard presided, reminding us of the forthcoming Group Exchange at Broughton Castle, the Sibford Group Meeting and our annual Moreton Market morning, for which we need to be busy jamming and baking. Helpers are always happy to welcome familiar faces, so do drop into the W.I. Hall for a morning coffee if you are in Moreton on Tuesday, Oct. 31st.

The August outing to Lacock village and abbey had been enjoyed by members with friends from Tysoe.

If only our members (or even just one !) had been contemplating investing in "new" dining chairs, then Michael Bull's talk on 'The Do's and Don'ts of Antiquing' would have been most helpful. Dealing solely with chairs his many hints on what, and what not to look for when purchasing could prove very helpful. He was thanked by Audrey Taylor.

There was a happy interlude when Glennis Hutchinson was presented with a garden token in celebration of her forthcoming marriage.

Gillian Soden's entry of a very young horserider won the competition for "An Old Framed Photograph", with Rosalind Pearlman 2nd. and Molly Gallard 3rd.

Molly and May Jarvis were our tea hostesses.

\* \* \* \* \*

October 10th.

Speaker is Wendy Kingsbeer

"A Day in the life of an Environmental Health Officer"

Competition :- A Mouse Trap

M.C.

Saturday October 7th  
Garage Sale  
10.00am 12.30pm  
at Burdrop House Barn  
Proceeds to Village Hall Funds  
phone 788162

## The Sibford Web Site - the other side of the coin

Having read, with interest, the letter in last months issue regarding the proposed re-positioning of the Sibford web site, I thought perhaps we should pause for thought before launching into this venture because, unfortunately, not everyone who "surfs the net" does so with good intentions - in fact some may even have malicious reasons for so doing.

Also, do we really want our village to become too well known -do we want to become a tourist attraction like Broadway, Chipping Campden or Stow-on-the-Wold where one can hardly see the lovely villages for cars & people?

Surely our needs regarding local services, calendar of events etc. are more than adequately met by our own very efficient "Sibford Scene", local news papers and the very useful "Advertiser" published every month.

Would it not perhaps be appropriate, therefore, to hold a Village Meeting or Referendum before committing ourselves to the new web site, as it will affect every household and every person in the village.

Mary Malloy.

# The Firs Garage

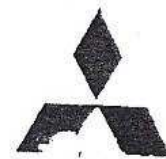
*a world apart from the rest*



**HOOK NORTON OXON**

(1 MILE NORTH OF VILLAGE)

(01608 737349/01608 737641)



MITSUBISHI  
MOTORS

**SALES OPEN: Mon - Fri 8am - 6pm, Sat 8am - 5pm, Sun CLOSED**  
(Out of hours please phone for an appointment)

**PARTS OPEN Mon - Fri 8am - 5.30pm, Sat 8.30am - 12.30pm**

## WE OFFER YOU

- \*Sales (New and Used)
- \*3 year unlimited mileage warranty (New)
- \*Optional 12 months warranty
- \*Part Exchange
- \*Off Road demos
- \*Service

- \*MOTs
- \*Parts
- \*Body work
- \*Insurance estimates
- \*Attended services (Fuel)
- \*Car Wash
- \*Friendly service and lots more!

ESTABLISHED 1960

*IT PAYS TO DEAL WITH A FAMILY BUSINESS*

*The Firs Garage would like to thank the local community for their loyal support; it is very much appreciated.*

We have had a much longer than usual summer break, due partly to the Pageant with which most of us were involved, if only indirectly.

Our next LEO meeting will be on the 31st October, when Timothy Wimbush has kindly agreed to give us a talk about some amusing incidents in his life. We shall make it a food evening too, so will everyone please bring a small plate of finger food to share. Also, will you all rack your brains and think of some ideas for future evenings. It does not necessarily have to involve a speaker.

We are meeting once again at the home of Mary Mills, at Maria's House, Sibford Ferris, at 8 p.m. Any new members will be made really welcome.

MW

## Sibford Horticultural Society

Previous pleas for more support for the Society resulted in a most successful show when gross takings of over £800 were achieved, much more than previous years. Several offers of assistance for the future were made which should mean that "the show goes on".

More offers would however be appreciated.

Our next meeting on **Wednesday 11th Oct.** at 8pm in the Village Hall will incorporate the Annual General Meeting taking only a short time before we listen to our speaker Mr. Meredith on 'Willow Structures in the Garden'

## Bishop Blaize Inn 17th Century Freehouse

Burdrop, Sibford Gower (01295 780328)

*Well-kept range of Traditional Beers and Guest Ales*

*Mondays Takeout Fish & Chips  
Frying times 12noon-2pm 6pm-9.45pm*

**BAR FOOD SERVED**

*Mon to sun 12noon-2pm*

*Mon to Sat 7pm-9.30pm*

*Sun Eve 7pm-8.30pm*

*Patio & Large Garden with Superb Views!*

*Sam, Sheila and Zebby Welcome You*

# SSN

## SIBFORD SYSTEMS AND NETWORKS

Over 15 years experience of PC and Mac sales, support, upgrades, internet, e-mail, and networking for home and business.

PC multimedia systems from only £499 inc. VAT, delivery and installation.

Hosts and creators of the Sibford Millennium Pageant internet site:  
<http://www.sibford.co.uk/2000/>

Lions Den, Sibford Ferris, Banbury,  
Oxon OX15 5RG

T: 01295 780482 - F: 07070 604713  
e-mail: [geoff@sibford.co.uk](mailto:geoff@sibford.co.uk)



FABRICS, CURTAINS & SOFT FURNISHINGS

### CURTAINS & BLINDS:

Handsewn, interlined  
and handmade headings  
our speciality

Customised pelmet design

Design service and home  
consultancy included

Every kind of fabric from  
many leading  
manufacturers

Decorative poles,  
Tie backs & trimmings

### OTHER SERVICES:

Loose Covers and  
Cushions

Wallpapers & Interior  
Decoration

Lampshade making

Custom made  
Bedspreads & Headboards

Re-upholstery Service

**Tel/Fax: 01295 788145**  
**Workroom/Office**

## DAVID MALONE

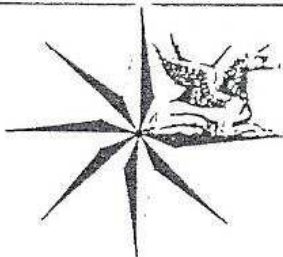
HIGH CLASS PAINTER AND DECORATOR

4 Acre Ditch  
Sibford Gower  
Banbury  
Oxfordshire OX15 5RW  
Tel: (01295) 780546



CITB REGISTERED

*Broken Colour Effects and Paperhanging a Speciality*



ALAN HESSEL  
ANTIQUE RESTORATION

SPECIALIST CONSERVATION OF FINE PERIOD FURNITURE

The Old Town Workshop  
Saint George's Close  
Moreton-in-Marsh  
Gloucestershire  
GL56 0LP

Tel/Fax: 01608 650026  
Mobile: 0860 225 608



### *Sibford Ferris*

*Stores and Post Office*

Your Local Convenience Shop

Bread baked daily on the premises

Fresh cakes and savouries

Newspapers & Cigarettes

Beers, Wines and Spirits

Chilled and Frozen Foods

Dry Cleaning, Photocopying and

Fax Services

National Lottery Agent

*And lots, lots more....*

Telephone your order  
for free local delivery

Opening Hours

7.30 am to 6.00pm Monday to

Saturday

8am to 1pm on Sunday

Terry & Judith

Main Street Sibford Ferris

Telephone 01295 788317

# THE SIBFORD MILLENNIUM PANELS CHRISTMAS IS COMING.

A pack of cards, a tea towel, or a book on the panels all make the ideal and unique gift for Christmas. Colourful and packed with interest. They record the Sibfords today with very personal contributions created by so many residents, they illustrate our history with characters from our pageant.

ALL for SALE at THE SIBFORD FERRIS POST OFFICE and STORES, Mollie Mulley tel. 780629 or Pauline Inns tel. 780702

## GREETING CARDS

A very personal Christmas Card to send to family and friends. A pack is the perfect gift. Blank inside they make interesting general greetings cards, thank you cards and notelets.

Pack of 6 cards - 1 card for each of 6 panels, £3.50 per pack.  
Individual cards 65p per card.

## TEA TOWELS

A special and personal gift for family and friends to enjoy and to use. Excellent value at £3.50 also available from Vera Jones 780522

## BOOK

An excellent record of the panels. It is the ideal gift for friends and family and all who know or have passed through the Sibfords. Also available at £8.00 from Andrew Gordon tel.780569

### **Aromatherapy & Massage**

Virginia Bennett SRN MHAF

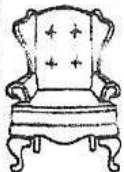
Home visits available

Tel: 01295 780373

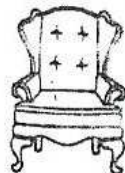


Telephone: 01295 269362 / 788101

### **Gower Products**



*Upholstery  
Traditional & Modern  
Furniture Repairs*



SIBFORD GOWER, BANBURY, OXON.

### **GODSWELL NATURAL THERAPY CENTRE**

*Godswell Lodge, Church Street, Bloxham  
Banbury, Oxon OX15 4ES*

\*\*\*\*\*

Acupuncture, Alexander Technique,  
Aromatherapy, Art Therapy,  
Chiropody, Chiropractic,  
Counselling & Psychotherapy,  
Cranio-sacral therapy, Homoeopathy,  
NLP, Nutrition, Physiotherapy,  
Reflexology, Remedial Massage,  
Reiki, Spiritual Healing,  
Shiatsu, Yoga.

\*\*\*\*\*

*Fully qualified professional therapists  
For information Ring 01295 720347*

## VOLUNTEERS NEEDED FOR A NEW SERVICE

I am delighted to tell you that Victim Support, Oxfordshire is launching a new service later in the year, with support from the Home Office. We will be offering a service to witnesses at the Magistrates Courts in Oxfordshire.

If you have ever been called to give evidence at a trial you will know just how daunting that experience can be. Imagine not having a friend or member of your family to come with you, knowing that you will have to speak in public about a crime that may have affected you deeply. At the moment, sadly too often people who are called to be witnesses just do not have the courage to attend and therefore the efficiency of the justice system fails and trials have to be abandoned.

There are seven Magistrates courts on Oxfordshire, each meeting on different days, and I am seeking to set up a team of volunteers to help witnesses as they arrive, to be on hand during and after the hearings. The volunteers will be trained to provide emotional support and practical information about court proceedings. They will also be able to arrange pre court visits so that witnesses can see the layout before the court assembles.

The volunteers will help witnesses who are called to give evidence, including defence witnesses as well as victims of crime and their families and friends attending court for any reason.

### Could you be a Witness Service Volunteer?

Volunteers would be expected to attend one of the seven courts in the County - Banbury, Bicester, Witney, Wantage, Didcot, Thame and Oxford for a whole day every week or fortnight. There will be at least two volunteers on duty at each session and full training will be given by Victim Support. Travel expenses will be paid.

If you could help please contact Victim Support at the Police Station, Warwick Road, Banbury or phone 01869 247050.

(I have a few copies of their application form if anyone would like one - Ed)

Suzanne Tharani

Milliner

Sibford Ferris & Deddington

Beautiful hats made to order  
or choose from existing collection  
(alterations considered)

Telephone: 01869 337456

By appointment only

**Her In Doors**

Bought & Sold

Old Pine, Oak & Mahogany Furniture  
Panelled, Ledged/Braced & Glazed  
Doors

Doors made from Reclaimed Pine, Oak  
& Elm

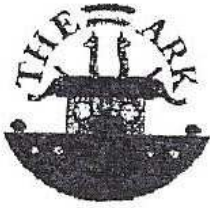
Houses Cleared

Patsy Edwards Tel/Fax 01608

737157



## Children's Day Nursery, Epwell



- Full day care for children 2½ to 5 years
- Full and part time places
- Open Monday to Friday 9.00am - 4.00pm.
- Excellent Ofsted Report

The nursery provides excellent opportunities for children to explore and learn at their own pace under the guidance of trained, experienced and caring staff.

For further information ring Julia  
Tel: (01295) 780580

**RICHARD WALLINGTON  
BUILDER**

**BLOCK PAVER DRIVES A SPECIALITY  
ALSO EXTENSIONS, PATIOS  
FENCING ETC.**

**HIGH QUALITY WORK, FREE ESTIMATES.  
01295 780705      0771 4613173  
(SIBFORD GOWER)      (MOBILE)**

MEADOWCROFT  
SECRETARIAL SERVICES  
Tel. 01295 780741+ *Ansafone*  
(Evenings/Weekends  
Tel. 01295 788106 + *Ansafone*)  
Letters, Manuscripts,  
C.V's, etc.  
LASER PRINTER  
*Photocopying/ Fax*  
VERY COMPETITIVE RATES  
Collection/Delivery  
Service if required.

FRANCIS MORDAUNT  
MSSCh, MBChA  
VISITING CHIROPODIST  
To enquire about a Home Visit,  
please telephone;  
01295 730615  
Professional Foot Care  
In Your Own Home

# GRAPHICS DIRECT

## Vinyl Graphics

Vehicle Livery : Signage : Etc

Ever thought of having your  
vehicle personalised?  
Need a sign made?  
All sorts of graphic decals  
made to order.

*contact Theresa Jack*

Tel: 01608 730555

The Firs, Hook Norton, Banbury. OX15 5DD

Tel: 01608 730555 Fax: 730271 Mobile: 0403 548154

# Church Services

Society of Friends Sunday at 10.30 am  
Methodist Sunday at 11.00 am  
Roman Catholic Mass (Wroxton) Sunday at 9.00 am  
(Brailes) Sunday at 11.30 am  
Baptist (Hook Norton) Sunday at 10.30 am  
Church of England, Holy Trinity, Sibford Gower

1st Oct. 10 am. Young at Heart at Shutford (N.B. change of venue)  
8th Oct. 9.30 am Family Service.  
15th Oct. 9.30 am Holy Communion  
22nd Oct. 9.30 am Holy Communion  
29th Oct. 9.30 am Holy Communion with Baptism  
1st Nov. 8.00 pm All-Saints Day communion service  
5th Nov. 10 am. Young at Heart at Tadmarton with Dedication of bells

Don't forget the Harvest Thanksgiving Service and bring and share supper afterwards. Service at 5.30pm followed by supper at the primary school on the 30th September.

## Triple M Services

Quality Repairs TO  
All Makes Of Car And  
Light Commercial  
Vehicles  
MOT Prep  
Welding  
Call M.J Harris  
on  
Swaldiffe 780614

## THE VILLAGE SHOP - HOOK NORTON

\* NATIONAL LOTTERY \*

Grocery - Greengrocery - Bakery  
Wines - Spirits - Confectionery  
Newspapers - Magazines - Cards  
Flowers - Plants and Accessories  
Video Rental - Bottled Gas  
Open Monday to Friday 7am to  
9pm

Saturday 7am to 8pm

Sunday 8am to 6pm

Telephone: 01608 737245

# Sibford Bus Services

## FREE BUS SERVICE

	Depart	Return
To Chippy Wednesday 4th & 18th October	10am	12 noon
To Banbury Thursday 12th, & 26th October	10am	12 noon

The pick-up points are :	<b>Banbury Bus</b>	<b>Chippy Bus</b>
	High Meadow Crossroads Village Hall	Village Hall Crossroads High Meadow The Colony

## 2. Stagecoach 480 Shipston - Sibford - Banbury

	M~S	NS	SO	Mon ~ Sat (M-S). (NS).	Sat only (SO).	Not Sat
Shipston	-	-	9.20am	-	-	-
Sibford Gower Crossroads	7.30am	9.00am	9.45am	11.45am	12.45pm	
Sibford Ferris School	7.32am	9.02am	9.48am	(11.38)	(12.38)	
Banbury Bus Station	8.00am	9.30am	10.15am	12.15pm	1.15pm	
	M~S	SO	NS	M~S	M~S	
Banbury Bus Station	11.15am	12.15pm	12.15pm	2.15pm	6.00pm	
Sibford Ferris School	11.38am	12.47pm	12.38pm	2.38pm	6.23pm	
Sibford Gower Crossroads	11.40am	12.50pm	12.40pm	2.40pm	6.25pm	
Shipston	-	1.15pm	-	-	-	

## 3. CHERWELL VILLAGER. 55

	Sibford ~ Banbury
Wednesday only	Outward Return (read up)
Sibford Gower	9.55am 1.55pm
Sibford Ferris	9.57am 1.53pm
Hooky	10.05am 1.45pm
Bloxham	10.35am 1.15pm
Banbury	10.50am 1.00pm

4. CHERWELL RURAL DIAL-A-RIDE SCHEME-A mini-bus with tail-lift to take ELDERLY OR DISABLED PEOPLE, and escort, to Banbury (max fare £1.20),

Door-to-door service, Book at Least one day in advance.

Operates on WEDNESDAYS ONLY.

Phone 263777 for more details or to book.

# Calendar of Events

## October

- Sun 1st Collectables and Car Boot sale. Village Hall p12  
Mon 2nd Ferris Parish Council Meeting. Sibford School.  
Tue 3rd Friendship Club Skittles match. p13  
Sat 7th Skip in Acre Ditch  
Sat 7th Garage Sale at Burdrop House Barn 10.00-12.30. p19  
Sat 7th Autumn Medley. 7.30pm at Swalcliffe Church. p15  
Tue 10th W.I. meeting at the Village Hall. p19  
Wed 11th Mobile Library in Sibfords and Burdrop 2.25 - 4.20pm  
Wed 11th Horticultural Society AGM/Talk. Village Hall 8pm p21  
Tue 17th Friendship Club. Village Hall 2 pm. p13  
**Tue 17th Deadline for contributions to the November Sibford Scene. Contributions to the Village Shop or Editor. p11**  
Wed 18th Dialability Unit in Bridge Street, Banbury. p18  
Thu 19th Sibfords Society Meeting. Village Hall 7.30pm. p4  
Sat 21st Playarea Jumble Sale. Mission Room, 12 noon. p11  
Sat 21st Last entry day for the Village Hall Quiz!!  
Tue 24th Friendship Club. Village Hall 2 pm. p13  
Wed 25th Mobile Library in Sibfords and Burdrop 2.25 - 4.20pm  
Fri/Sat/Sun 27,28,29th Cottage Crafts. Malcolms Cottage. p14  
Sat 28th Skip in Pound Lane  
Sat 28th Puppet Show, 'The Mousehole Cat' V.Hall 3 pm. p12  
Sat 28th Village Hall Quiz. 7.00 pm. p12  
Tue 31st LEO Club at Marias House, S.Ferris. 8 pm. p21

## November

- Wed 1st G.D.B.A. Coffee Morning, Westerways, S.Ferris. p7

## Sibford Scene

Editor; Adrian Lamb, Grounds Farm, S.Ferris 780380

Treasurer; Timothy Wimbush, The Rectory, Acre Ditch, S.Gower  
780555

Advertising Manager; Ivor Hopkyns, Elmridge Farmhouse, S.Gower  
788367

Personal Adverts; Up to 4 lines £1.00, 8 Lines £2.00 - Contact Editor  
Commercial Adverts; Small £15 p.a. Consult Advertising Manager