

No. 216

JUNE/JULY 1999

**OPEN GARDEN in THE COLONY - Saturday 19 June
in aid of CHURCH ROOF REPAIR FUND**

Roger & Val Powell's garden at 'Meadow Cottage' will be open, 2 - 4.30pm, for your first viewing of their Summer shrubs & flowers. There will be a cake-stall and teas. Please come along and give a little extra boost to the Roof Repair Fund. Entrance £1.50.

RH



**SENIOR CITIZENS AFTERNOON TEA PARTY
SUNDAY 18 JULY 3 - 5pm**

All senior citizens are welcome to come along for afternoon tea at Temple Close, Sibford Gower - in the garden if weather permits, otherwise indoors. Music will, as usual, be provided by the renamed, but ever popular, Hook Norton Brass Band.



**An Extract from the BANBURY GUARDIAN
March 1877**

TWO CHURCHMEN and CHURCHWOMEN.—The Vicar of a scattered country parish will be very thankful for CONTRIBUTIONS towards the fund being raised for building a parsonage house. The living (£230 per annum) is in public patronage. Population about 800; all poor. Amount already received, £381. Subscriptions may be paid to the Sibford-parsonage account, London and County Bank, Oxford; or sent to the Vicar, Rev. E. T. Stevens, Sibford Gower, Banbury, who will thankfully acknowledge all donations.

(Plus ce change, plus c'est la même chose.)



SIBFORD SCHOOL

SIBFORD FERRIS, BANBURY,
OXFORDSHIRE OX15 5QL
Tel: 01295 781200 Fax: 01295 781204
E-mail: Sibford.School@dial.pipex.com
www.sibford.oxon.sch.uk

A school with a distinctive Quaker ethos for boys and girls aged 5 - 18. Day and boarding places for 320 pupils in beautiful Oxfordshire countryside.

Each talented ~ Each different ~ All valued

OPEN MORNINGS

10 am

on Monday, 3rd May & Friday 25th June

- High quality education for all
- Wide range of GCSE options
- Flourishing Sixth Form with a wide range of A level and GNVQ choices
- Nationally renowned Dyslexia Department with specialist Maths support
- Use of Information and Communications Technology across the curriculum
- Excellence in the Arts

Transport available for day pupils

Please contact the Admissions Secretary for further details

Sibford School - Established in 1842
Registered Charity no. 1068256

Sibford School is a charity limited by guarantee registered in England under no. 3487651

STUART and JOYCE
welcome you at
THE GATE HANGS HIGH
Hook Norton

Traditional Ales in our friendly pub
with excellent food available in the
extended restaurant

Evening Bookings Advisable

Telephone 01608 - 737387

BAR MEALS ALSO AVAILABLE

Open Seven Days per Week.

Bar only on Sunday evenings.

The Gate Hangs High & Hinders None,
Refresh & Pay and Travel On'

*Something Old; Something New;
Something Borrowed; Something Blue*

Exquisite Silk Flowers To Hire
Vintage Wedding Cars

Clark & Dee Spencer

Stonepit Cottage, Epwell Road, Shutford, Oxon OX15 6HE
Tel: 01295 788233

NOAH'S ARK PAINTING COMPANY

TRADITIONAL & CONTEMPORARY DECORATION

Winners of Banbury Business Awards 1997

'New Business of the Year'

Featured in 'House Beautiful', 'Perfect Home' and
on Central TV's 'Our House'

FRIENDLY * PROFESSIONAL * EFFICIENT

Approved by DULUX 01295 267024

Oddjob

CARPENTRY

PLUMBING

ELECTRICS

HOUSEHOLD REPAIRS

SECURITY

HEATING INSTALLATION

KITCHEN FITTING

FOR A COMPREHENSIVE AND RELIABLE
LOCAL SERVICE

HUGO SEELY 01295 780355

FREE NO-OBLIGATION ESTIMATES

No job too large or too small

Excellent local references available

* * **SIBFORD L. E. O. CLUB NEWS** * *
(Ladies Evening Out Club)

Members gathered at Jean Puddle's home on 18 May for a very enjoyable evening swapping memories centred around the souvenirs they had brought along.

The next LEO meeting will be on 15 June at Rosalind Pearlman's home in Burdrop - this will be a visit by a 'Weekenders versatile clothing' representative. M. H.

£ £ £

THE 1999 BROWN ENVELOPES APPEAL
on behalf of the *Sibford Scene* Funds.

OUR PROFOUND THANKS go out to the 104 households who have contributed a **grand total of £449** - some 10% more than last year. All contributions are greatly appreciated, but we are particularly grateful to the dozen villagers whose brown envelopes contained between £10 & £25 each.

All these **contributions**, together with the recently received **donations** from local organisations and **payments** for adverts, have arrived in the nick of time to keep our finances out of the red, following our recent purchase of a new, more versatile and slightly faster copier. The previous one was slowly (and literally) grinding to a halt and had served us well for five years.

We will still have to pay for future stocks of paper and for the copier maintenance contract, but we are keeping our fingers, legs, etc crossed, in hopes of further **contributions & donations** arriving over the next few months (nudge, nudge, say no more!).

Once again - **THANKS, FOLKS.**

The Editor

£ £ £

DONATIONS TO SIBFORD SCENE FUNDS
from **LOCAL ORGANISATIONS**

Four further donations to our funds have been received recently - regular ones from the **Women's Institute** & the **Friendship Club**, a nicely inflation-proofed one from **Sibford Village Hall** and a helpful one from first-timers **Tots' N' Babes**.

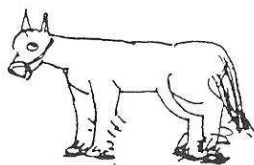
As mentioned above, all such donations are greatly appreciated, especially when our bank balance has recently nose-dived near to that 'thin red line'. Ed.

Nature Notes.

Apr 17th. Went to stay at Asterton immediately west of the Long Mynd in Shropshire. It is an area reminiscent of pre war days with narrow lanes and small fields which are nearly all grazed by sheep at the moment but I expect many of them will be moved up on to the Long Mynd when lambing is completed. Most of them are welsh mountain ewes with a few mules and even fewer cluns. The little welsh ewes have tiny lambs but they seem to be quite lively. The hedges are mechanically trimmed like ours but are made up of very different species. With hardly any elder or sycamore and very little ash they are made up mainly of holly, hazel, hawthorn and rowan.

Apr 18th. Up on the Long Mynd gliders were being towed up by a plane and several hardy individuals were paragliding in spite of the cold wind and an icy shower of sago.

Apr 19th. Visited the Stiperstones which are rocky outcrops standing like a line of ruined castles along a moorland ridge. The heather, bilberry, crowberry, cowberry and western gorse provide homes for large numbers of meadow pipits, quite a few skylarks and wagtails. Above us anything up to thirty ravens were having fun soaring on the updraught and powerdiving while talking to each other in that soft croak that carries so far. We did not see or hear any grouse but, my sister-in-law who is with us, found some grouse droppings by the path. On the hills around some sizable areas of gorse in full bloom made some fine splashes of colour and far away to the west we could see some snow covered peaks, probably Snowdonia.



Apr 20th. A wet day so we visited Acton Scot Farm Museum. There was no fieldwork going on as the carter, dressed in his boots, breeches and leather leggings, was in the geer house cleaning the harness while his two horses were kicking their heels in the adjoining stable. Butter making and laundry work were being done as it would have been a century ago.

Apr 21st. Went to Stokesay Castle, A well preserved but unspoiled castle. From the tower we could see a pond across the road where a coot was sitting on its nest and a group of sand martins were skimming low over the water.

Apr 22nd. Walked on Offas Dyke where there was a fine show of primroses and wood anemones. We came across a huge yew in a churchyard. It was over 30 feet around the trunk and still pretty healthy. We went to a nature reserve with gorse covered banks and with its variety of habitat, looked to have a great selection of wild flowers but it is a bit early in the year and we were having to keep an eye on the frequent storms. When we got back to our bungalow at Asterton we found a redstart in the living room. After flying round the room it flew out through the hopper window that we had left open. It must have been in there for some time judging by the offerings that it had left behind.

Apr 23rd. In Wentnor church we saw a memorial stone to a family that died when their house was swept away by a blizzard at 9 O'Clock one sunday morning in 1779. We found some white climbing corydalis in bloom this afternoon and a patch of moschatel which is known as town hall clock as it has a group of five flowers set like a four faced clock with a fifth one pointing skyward.

Apr 24th As we left this morning there were ravens on the Long Mynd.

Apr 28th. Tawny owls were out early this evening. We could see one against the sunset preening itself in our walnut tree. There were also more bats around than I have seen for many years.

May 1st. A starling near us has spoiled a first class imitation of a ringing phone by changing from a double ring to a triple one.

May 12th. In the recent tornados in Oklahoma the wind blew at 318mph which is the strongest wind ever recorded on earth.

May 18th. I have heard of 2 separate sightings of buzzards over Sibford Gower recently.

DO YOU HAVE THE COLLECTING BUG? Are you looking for that special piece to add to your collection?

Local resident is regularly travelling to antique and collectors auctions and fairs, and could search out that piece for you. Will match your requirements and can phone to confirm details from auction/fair, if preferred.

All types of collections sought out by committed treasure seeker - often at prices far better than the shops. Phone 780025.



You are ALL invited to Come Along and
HELP to 'RAISE the ROOF' by joining in

SHEILA WALSH's

'BRING & SHARE' 90th BIRTHDAY LUNCH
on SUNDAY 27th JUNE at 1pm in the VILLAGE HALL.

Come along with a plate of food for the communal table;
liquid refreshments will be provided

- glass of wine, beer, soft drinks, tea & coffee.

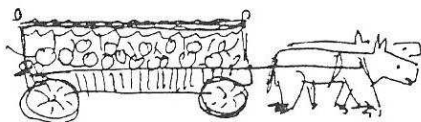
♪ ♪ ♪ SINGERS ♪ ♪ ♪ MUSIC ♪ ♪ ♪

NO CHARGE - but there will be a COLLECTION BOX at the door
for your generous contributions towards

*** THE CHURCH ROOF REPAIR FUND. ***



COME WITH A PLATE



TWO WONDERFUL SHIRE HORSES, PERCY & ARTHUR, & their WAGON
will come at 2.30pm and give free rides for children.

* NO PRESENTS - just a DONATION for the CHURCH ROOF FUND *
ALL WELCOME

- IF YOU CAN COME ALONG

PLEASE PHONE 780109 NOW (to give an idea of numbers).



S.WEBBER
BUILDING AND JOINERY
EST. 1976

WINDOWS/DOORS
EXTENSIONS
KITCHENS
LOFT CONVERSIONS
MAINTENANCE
AND MORE

TEL: 01295788112
MOBILE: 0467771380

MEADOWCROFT
SECRETARIAL SERVICES
Tel. 01295 780741+ *Ansafone*
(Evenings/Weekends
Tel. 01295 788106 + *Ansafone*)
Letters, Manuscripts,
C.V's, etc.
LASER PRINTER
Photocopying/ Fax
VERY COMPETITIVE RATES
Collection/Delivery
Service if required.



Mon/Wed/Thurs/Fri
9.00 - 12.00
Sibford Village Hall
O.F.S.T.E.D. approved
For ages 2½-5 years

HELP! Do you have any unwanted tricycles suitable for children aged 3 - 5 years and in good condition? If so, we would love to have them and we will collect them from you.

Please contact our supervisor, Julie Bruggenwirth on 01608 730861 for any information regarding Sibford Playgroup.

*Sibford Ferris
Stores and Post Office*

Your Local Convenience Shop

Bread baked daily on the premises

Fresh cakes and savouries

Newspapers & Cigarettes

Beers, Wines and Spirits

Chilled and Frozen Foods

Dry Cleaning, Photocopying and

Fax Services

National Lottery Agent

And lots, lots more.....

Telephone your order
for free local delivery

Opening Hours

7.30 am to 6.00pm Monday to

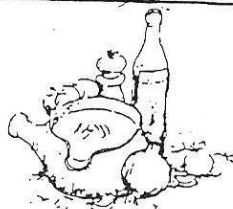
Saturday

8am to 1pm on Sunday

Terry & Judith

Main Street Sibford Ferris

Telephone 01295 788317



Méli-Mélo Cuisine

*Elegant & Imaginative Food for
Private and Corporate Occasions*

French & English Country Cuisine

*Business Functions, Dinner Parties,
Hot & Cold Buffets, Canapés,
Anniversaries & Christenings*

*Telephone Victoria on
(01295) 730338*

W. I. NEWS & INFORMATION

After the mid-day deluge, all was calm as we arrived for the May meeting.

The business session was as varied as ever. Was anyone interested in the making of a W.I. banner ? There was a moderate response whilst several needed time to think about it. Were members in favour of purchasing a President's Badge ? One was - she lost the vote !

Energetic members were reminded of the forthcoming Kirtlington walk for which they had previously enrolled, and there was general approval of the proposed August outing.

Neighbouring W.Is. gave notice of coffee mornings in June, and our help (and cakes!) will be requested for Village Fayre teas.

A collection of cuddly "Teddies for Trgedies", knitted by members, was much admired, destined for the Horton Hospital's small patients.

A delightful poem by Gaynor Harper-Tarr describing her childhood "Secret Place" is being submitted for the County Denman Cup competition. Good luck, Gaynor !

Our V.C.O. secretary expounded on the resolutions for the June I.G.M. (see May Sibford Scene Extra). We voted unanimously in favour of all four. In lighter vein she tested our general knowledge with a "w i" quiz.

The competition for flowers in an egg-cup was won by Margaret Cox who, with Mollie Gallard, provided refreshments.

The meeting closed in warm sunshine !

M.C.

FOR SALE

Whirlpool (Philips)

Chest Freezer

10 cubic feet

Very good condition £75

Phone: 01295-780358

K.G.PREEDY & SON GENERAL BUILDERS

For All your building work

*

SPECIALISTS in STONE WALLS Etc

*

Braggingtons Lane, Middleton Cheney

Tel; 01295 - 710977

Sibford References Available

FRIENDSHIP CLUB

At the A.G.M. held in early May the past, present and future of the Club was discussed and then thanks were given by Mrs Webb to all the committee members for their support during the past year. Mrs Webb expressed her wish to resign as Leader, but since no-one was willing to take over she agreed to carry on in a temporary capacity for the next future. The rest of the committee were re-elected 'en bloc'. A resolution was passed by a majority vote to increase the membership to £5 per year, but to abolish the payment of 25p for refreshments when meeting in the Village Hall. The afternoon was concluded with a tea provided by the committee.

Our future programme is as follows :-

Tuesday 8th June - Outing to Hatton Locks.

Coach leaving Epwell 12.30 p.m.

Tuesday 22nd June - Meeting in the Village Hall at 2.00 p.m.

Tuesday 6th July - Outing to Weymouth.

Coach leaving Epwell at 8.00 a.m.

Tuesday 20th July - Meeting in Village Hall at 2.00 p.m. when it is hoped Mrs Hichens will be giving a talk about her recently published book.

This has been rescheduled from 18th May.

Tuesday 3rd August - Outing to Hampton Court.

Coach leaving Epwell 8.30 a.m.

SIBFORD PAGEANT 2000

Recently, thanks to information given to us by Joan Shields, Neil and I visited The Mill in Banbury to see the lovely panels produced by so many people in the Sibfords and Burdrop! What a great start and introduction to your forthcoming pageant, for many newcomers to the villages; how exciting for longer-term residents to have their homes displayed and friendships made and others renewed.

As some of you will know, "The Manor" was home to my immediate family and grandfather for about 50 years, all of whom were much involved in village activities. I, personally, lived in Axbridge, Somerset for about 8 years, where we had a pageant every 10 years, with an "extra" one in 1985 recalling the Battle of Sedgemoor in 1685 (to which my parents came). What fun all of us in the "town" had - in acting, costumes, street scenes, music, flower exhibitions etc., etc., - everyone who wished to be involved in any way whatsoever, great or small, public or private - was! In 1990, (the last big one) - the sun shone for the three days! Don't be disheartened if it all sounds rather daunting - it really can be great fun, and brings a whole community together.

With all good wishes - we hope to come!

Sue Brambell (nee Kinnish)
Ledbury, Herefordshire.

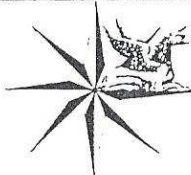
The Tuesday Bike Ride



A record start to this summers outings with more than twenty cyclists turning out for the first evening. Since then the weather seem to have put people off although we have not got wet yet (there is still time).


We leave Lanes End Corner (Ferris Crossroads) at 7 O'Clock.
More details from Adrian Lamb 780380 or Joanna Gilkes 788190

The Tuesday Bike Rides are the perfect training ground for taking part in the Historic Churches ride in September. This is an annual sponsored event to raise funds for grant aiding repairs to historic places of worship of all denominations. Our own Church has been granted £5000 towards the roof repairs. This worthwhile cause needs all the support it can get so do get involved or at least sponsor those who do.



The Old Town Workshop
Saint George's Close
Moreton-in-Marsh
Gloucestershire
GL56 0LP
Tel/Fax: 01608 650026
Mobile: 0800 225 608

ALAN HESSEL
ANTIQUE RESTORATION



SPECIALIST CONSERVATION OF FINE PERIOD FURNITURE

RED HORSE FUELS

(R.C. Hoggins)

Windmill Farm, Oxhill, Warwickshire
Telephone: 01926 642832

Solid Fuels and Logs
Bottled Gas and Paraffin
Peat, Compost, Growbags, Soil,
Sand, Gravel, Cement

Ring for Delivery or collect from our
new yard on the A422

Bed & Breakfast

AGDON FARM

Nr Brailes

Comfortable rooms
in old stone farmhouse

Tel: Maggie Cripps

01608 685226



flowers for all occasions

Petals

43a Market Place, Banbury, Oxon. OX16 8NW
(Next to Laura Ashley)

Telephone: (01295) 255450



LETTER from SIBFORD VILLAGE HALL COMMITTEE

The May Collectables and Car Boot Sale raised £69.25 for Hall funds. The next Sale is on Sunday, 6th June, at the revised time of 2.00 to 4.00 p.m., tables at £5 - please ring 01295 251339. Refreshments available. There is also a Car Boot Sale at the Village Annual Fayre on Saturday, 26th June, ring the same number for bookings.

We are looking for craft stalls at the Annual Fayre on Saturday, 26th June, 1999, starting at 1.00 p.m. If anyone is interested, please ring 780025. The complementary Programme is being delivered with your Sibford Scene - please support the Fayre, as you will see there is something for everyone and the Childrens Obstacle Races will again be held as last year. We are sure the evening's entertainment will be as good as last year and why not make a pledge to the brave men losing their hair on Friday night 25th June, at the Bishop Blaize. AND talking of bravery - how about putting yourself in the stocks to raise funds for your own Club!

Or why not enter your dog in the Sibford Fun Dog Show - this year there is a Challenge Trophy for 'Sibford Top Dog' and a Championship Rosette, plus a Trophy for the overall Best Young Handler.



BISHOP BLAIZE - EXTENDED SUMMER OPENING HOURS

Throughout the Summer, the Bishop Blaize will remain
OPEN ALL DAY (ie. from 12noon till closing time)
every Saturday & Sunday and on Bank Holidays.

BISHOP BLAIZE INN

17th Century Freehouse

Burdrop, Sibford Gower - (01295) 780323

Well -kept range of Traditional Beers and Guest Ales

BAR FOOD SERVED

Monday
Take-out Fish
and Chips

Mon to Sun 12noon - 2pm
Mon to Sat 7pm - 9.30pm
Sunday 7pm - 8.30pm

Traditonal
Sunday Lunch

Patio and Large Garden with Superb Views!!

Sam, Sheila and Zebby Welcome You

SIBFORD GOWER PARISH COUNCIL

The Annual Parish Meeting was held on April 30th. Ten local electors attended the meeting.

The Chairman reported that works to improve the drains in the Colony Road had been done and new gullies had been installed. However the Council was still waiting for more work to be carried out but due to the highways reduced budget this work might take some time before it would be completed.

Mr David Randall has agreed again to look after the village footpaths, cutting them back twice a year, Spring and Autumn.

Parking was still a major problem at the cross-roads and by the pond.

At the moment Emergency Services are not be able to get through Main Street and Bonds End Lane and the Council is urging car owners to park their vehicles in their garage or on their driveway.

Dog fouling is also on the increase. Will dog owners please be responsible and clear up after their dogs.

A lengthy discussion took place about planning issues. Discontent was expressed by both villagers and members of the Council because of the lack of support from the Planning Department and Committee given the number of permissions granted on sensitive applications against the wishes of village residents and the Parish Council. The Chairman thanked everyone who helped with the Litter blitz.

The Annual Parish Council meeting will be held on May 21st at the Primary School.

Petra Berry, Clerk (780462)

SIBFORD GOWER OPEN GARDENS

SUNDAY 11 JULY

The following gardens will be open under the National Garden Scheme from 2 - 6 pm:

The Manor House	-	Mr & Mrs Martyn Booth
Carters Yard	-	Mr & Mrs Henri Tengvall
Meadow Cottage	-	Mr & Mrs Robert Powell (plants for sale)
Temple Close	-	Mrs Vera Jones (teas organised by the PTA).

Combined admission fee £2.50 children accompanied by an adult admitted free.

§ § §

*** LATE NEWS EXTRA ***

THREE SIBFORD GOWER GARDENS ALSO OPEN

SUNDAY 30 MAY 2-6pm

Princess Royal Trust for Carers



COME TO A



Fancy Dress Garden Party




at **WYATTS CLOSE, SIBFORD GOWER**
(VILLAGE HALL IF WET)

SATURDAY 17th JULY

2.30 - 4.30 p.m.

IN AID OF CHURCH FUNDS

CHILDREN'S FANCY DRESS PARADE AND
COMPETITION (in three classes by ages)

GOOD FOOD

BOTTLE STALL

GLASS & CHINA

ICE CREAM

TREASURE HUNT

FACE PAINTING

GAMES

TEAS
AND MUCH MORE!

CLOCK GOLF

ENTRANCE 20P
FANCY DRESSED CHILDREN FREE

SIBFORD HORTICULTURAL SOCIETY

Thursday 8 July - Visit to Oxford Botanic Gardens. Members wishing to join this outing should please contact Gil Soden (780543) or Roger Powell (780525) to arrange car-loads in order to minimise transport.

Saturday 21 August - Annual Show. Final details will appear in the forthcoming Show Schedule & in next month's *Scene Extra*.

SIBFORD TABLE TENNIS CLUB

On the whole the 1998-99 season was very successful for the Sibford teams in the Banbury & District T.T. League. The "A" team finished top of the 1st division with the "B" team and "C" team both well up in division 2 & 3 respectively. The "D" team in the 4th division were not so good!

Jason Tustain, who was runner-up in the Top Ten tournament, went on to win the singles final in the Fine Lady Bakeries Banbury Closed Championship. The doubles final was an all Sibford "A" team affair where Jason and Sean O'Keefe lost to David Symcox and Ian Gilbert. Runner-up in the Divisional tournament in division 2 was Sibford player Rev. Nicholas Morgan.

Sibford residents playing in the teams include Fred Inns, Allister Wealsby, George Hall, David Stewart, David Simms, Peter Randall, Arnold and Ina Lamb.

The Secretary, Ina Lamb (780357), would be pleased to hear from anyone interested in playing.



DAY NURSERY

Day care for 0 to 5 year olds
8:30am to 5:30pm
Safe Fun Environment

The Day Nursery offers a mixture of care with educational and play opportunities.
Book from an hour to a whole day!

For further details contact:
Mella Waters, Day Nursery Co-ordinator on
01608 644440


Registered Charity No: 1060208
The ACE Centre is a non profit organisation

**GODSWELL NATURAL
THERAPY CENTRE**

*Godswell Lodge, Church Street, Bloxham
Banbury, Oxon OX15 4ES*

Acupuncture, Alexander Technique,
Aromatherapy, Art Therapy,
Chiropody, Chiropractic,
Counselling & Psychotherapy,
Cranio-sacral therapy, Homoeopathy,
NLP, Nutrition, Physiotherapy,
Reflexology, Remedial Massage,
Reiki, Spiritual Healing,
Shiatsu, Yoga.

*Fully qualified professional therapists
For information Ring 01295 720347*

The Sibfords Society

At our last meeting, Mr Eric Kaye spoke about Shenington Airfield during the Second World War, when it was used to train bomber pilots and crew to fly the Wellington and other planes. Eventually bombers flew on raids over Germany, with the

consequent sadness of some planes not returning.

On the 16 June we have an addition to our programme when Caroline Balderston Parry will talk about her book tracing the early life of a young woman who emigrated to Canada in 1835, in the Village Hall at 7.30 pm. Caroline's home is in Canada and she is at present working at the Friend's School for a year, so do come and hear what promises to be an interesting evening

Our visit to Wroxton Abbey has been arranged for 30th June at 7.00pm and if it is good weather we can walk in the grounds and have a picnic there beforehand. We should meet outside the Abbey at 6.50pm so that we will be ready to start the tour at 7.00pm. There are still a few places left for more people to join us on a first come first served basis, so please ring Jenny Barratt on 780336 if you would like to join us.

THE VILLAGE SHOP - HOOK NORTON

* NATIONAL LOTTERY *

Grocery - Greengrocery - Bakery
Wines - Spirits - Confectionery
Newspapers - Magazines - Cards
Flowers - Plants and Accessories
Video Rental - Bottled Gas
Open Monday to Friday 7am to

9pm

Saturday 7am to 8pm

Sunday 8am to 6pm

Telephone: 01608 737245

DAVID MALONE

HIGH CLASS PAINTER AND DECORATOR

4 Acre Ditch
Sibford Gower
Banbury
Oxfordshire OX15 5RW
Tel: (01295) 780546



CITB REGISTERED

Broken Colour Effects and Paperhanging a Speciality

Editor's Antique Hunt Ends in Success

I wish to thank the several villagers who responded to my plea for an Amstrad word processor to replace my antique model which had suddenly seized up.

A slightly superior machine was persuaded to stay awake long enough to produce the April/May edition but was then put gently back into semi-retirement. *Many thanks, Roger.*

In the end, Michael Wollerton of Sibford School very kindly donated a machine, an enhanced version of my deceased model, which has, so far, behaved itself - although most of the 'enhancements' still remain a mystery to me!

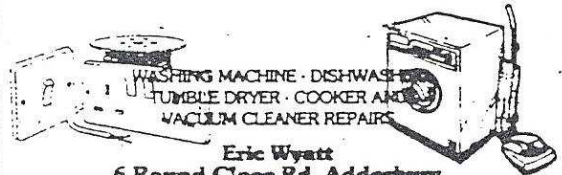
So, with any luck, I can delay, for a few more years, before plunging into the white-hot technology of the 1990's.

S S S

Triple M Services

Quality Repairs TO
All Makes OF Car And
Light Commercial
Vehicles
MOT Prep
Welding
Call M.J Harris
on
Suwalcliffe 780614

ADDERBURY DOMESTIC APPLIANCES



WASHING MACHINE · DISHWASHER
TUMBLE DRYER · COOKER AND
VACUUM CLEANER REPAIRS
Eric Wyatt
6 Round Close Rd. Adderbury
Tel. No. (0295) 810116

-Ann Woolgrove-

Fabrics & Soft Furnishings

*- choose from hundreds of fabrics for
Professionally made curtains, pelmets
and blinds. Loose covers, cushions
and re-upholstery.*

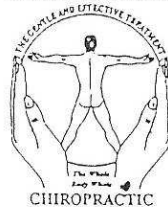
Bedspreads and headboards.

Wallpapers and decorating service.

Please phone for details

-01295 788145-

MCTIMONEY-CORLEY



John Mulley

CHIROPRACTOR

DC MBAAC

THE OLD POST OFFICE,
SIBFORD GOWER, BANBURY,
OXON. OX15 5RT.

Tel. (01295) 780629



SIBFORD SCHOOL OPEN DAY & SPORTS DAY Saturday 12 June

Meeting for Worship at 9.30am - Oliver Studio.

OPEN DAY 10am - 12noon: exhibitions of work and
presentations by pupils, classroom displays.

SPORTS DAY 1pm - 4pm.

Detailed Programme of Events on arrival.

You are welcome to picnic in School Grounds at Lunch Time.

Please contact Head's Secretary (781200)
if you wish to join us for tea at 4pm.



SIBFORD FERRIS PARISH COUNCIL

Dates of Meetings for the coming year are:

21st June

18th October

10th January

17th April (AGM)

16th August

29th November

6th March

8th May

The next meeting of The Cherwell Local Agenda 21 Environment Forum will be held on Saturday 19th June at 2 p.m. at Bodicote House. The meeting will look at several issues concerning the Cherwell Local plan which is currently being reviewed. All welcome. Further details from Philip Middlewood on 01295 252535 extn 4224.

Arts bursaries are available for individuals pursuing professional arts careers or enthusiastic amateurs wishing to attend short courses or purchase equipment. Applications must be in by first week in December. Details from Arts Promotions Officer (01295) 252535 ext. 4343

David Moir Parish Clerk

REMEDIAL MASSEUSE

STRESS AND TENSION EASED AWAY
MUSCULAR AND SKELETAL PAIN RELIEVED



Elizabeth Webber - MAR.LCSP (Assoc)
Godswell Natural Therapy Centre
Godswell Lodge, Bloxham, Banbury.
Telephone 01295 788101

Founded 1919

FRANCIS MORDAUNT

MSSch, MBChA

VISITING CHIROPODIST

To enquire about a Home Visit,

please telephone;

01295 730615

Professional Foot Care

In Your Own Home

the wykham arms

Sibford Gower 01295 - 780351

A Seventeenth-Century Thatched
FREE HOUSE

Selection of Real Ales
HOME COOKED FOOD

* Wooded Beer Garden *

Ample Seating in Bar & Restaurant
Booking Advisable at Weekends

Children Welcomed

The Firs Garage

a world apart from the rest

HOOK NORTON OXON

(1 MILE NORTH OF VILLAGE)

(01608 737349/01608 737641)



SALES OPEN: Mon - Fri 8am - 6pm, Sat 8am - 5pm, Sun CLOSED

(Out of hours please phone for an appointment)

PARTS OPEN Mon - Fri 8am - 5.30pm, Sat 8.30am - 12.30pm

WE OFFER YOU

- *Sales (New and Used)
- *3 year unlimited mileage warranty (New)
- *Optional 12 months warranty
- *Part Exchange
- *Off Road demos
- *Service

- *MOTs
- *Parts
- *Body work
- *Insurance estimates
- *Attended services (Fuel)
- *Car Wash
- *Friendly service and lots more!

ESTABLISHED 1960

IT PAYS TO DEAL WITH A FAMILY BUSINESS

*The Firs Garage would like to thank the local community for their loyal support;
it is very much appreciated.*

SIBFORD CRICKET CLUB

NEWS FROM THE BOUNDARY

The season has got off to a flying start with two victories from our first two games. The credit for this flying start must largely go to Jason Barton, who has in two games scored nearly 90 runs and taken 4 wickets, and Lee Gilbert, who has taken 9 wickets so far this season.

Sibford VS Woodford

Woodford 117 all out:

J Barton 4 for 28, L Gilbert 3 for 19, D Prickett 2 for 5 Sibford 118 for 5:

J Barton 43, D Pratt 39 not out, Ron Morbey 25

Sibford VS Thornbrough: Match Abandoned-Rain

Sibford Vs Gawcott & Hillesden Sibford 152 for 7:

J Barton 43 not out, I Wollerton 40, K Peachey 24.

Gawcott 114 all out:

L Gilbert 6 for 28, D Prickett 1 for 12, I Davies 1 for 12

Fixtures June 1999

Sat 5th VS Hanslope at home

Sat 12th VS Thornbrough at home (ground to be found)

Sun 13th VS Darlingscott away

Sat 19th VS Priors at home

Sun 20th VS Round of Gras at home

Sat 26th VS Chacombe away

Sun 27th VS Mickleton at home

ACUPUNCTURE

Acupuncture is a gentle and effective treatment for a wide variety of common complaints, including back and joint pain; sinus problems; digestive disorders; depression; PMS; high blood pressure; asthma and skin complaints. Contact me to discuss how acupuncture and traditional chinese medicine could help you.

Hugo Seely, Lic. Ac. M.B.A.C

Licensed Acupuncturist

Holly Mount, Main Street, Sibford Gower, Oxon OX15 5RT

T: 01295 780355

Member of the British Acupuncture Council



HOLY TRINITY CHURCH NEWS



The last service in church before we close to prepare for the programme of repairs to be carried out will be Sunday 30th May which is Trinity Sunday and our Patronal Festival. After this date all 9.30 am services at Sibford will be held in the Village Hall, and not as previously reported, in other churches in the Benefice. The only exceptions to this are the two Benefice Services which will be held elsewhere as the Village Hall is not available on the first Sundays, the two 8.00 am services (13th June and 12th September) which will be held at Epwell and the service on 27th June, when we have accepted the very kind invitation to hold the service in the Methodist Chapel.

The Jumble Sale organised by Jane Holliday and Sue Heath added over £350 to the Roof Repair Appeal, a wonderful result which will greatly help to "Raise the Roof". Very many thanks to Jane and Sue for their very hard work over this and to all their helpers.

Thanks also to Norah Barth for organising a Bridge Drive yet again; her contribution to Church Funds over the years in this way has been immense.

Meanwhile contributions to the Roof Appeal have continued to roll in and we are all working hard to reduce the £15,000 deficiency in the total amount required.

METHODIST CHAPEL

We would like to extend a welcome to anyone who would like to attend our Chapel Anniversary on Tuesday 1st. June at 7.30 p.m. when the Rev. Michael Longstaffe of Banbury will be the Speaker and Mrs Margaret Gibbs of Tysoe the Chairperson.

Light refreshments will be served afterwards.

We are also holding a Coffee Morning the following week on Wednesday 9th June 10 - 12 noon in the Chapel. Coffee and home made biscuits 60p.

The usual cake and plant stall. Please come along and meet friends old and new.

CHURCH SERVICES

Society of Friends	Sunday at 10.30 am
Methodist	Sunday at 11.00 am
Roman Catholic Mass (Wroxton)	Sunday at 9.00 am
(Brailes)	Sunday at 11.30 am
Baptist (Hook Norton)	Sunday at 10.30 am

Church of England, Holy Trinity, Sibford Gower

6 Jun	10.00am	Benefice Eucharist at Epwell
13 "	8.00am	Holy Communion (Epwell)
13 "	9.30am	Family Service (Village Hall)
20 "	9.30am	Holy Communion (Village Hall)
27 "	9.30am	Holy Communion (Methodist Chapel)
4 Jul	10.00am	'Young at Heart' Eucharist at Broughton
11 "	10.00am	Deanery Eucharist at Bloxham Church
18 "	9.30am	Holy Communion (Village Hall)
25 "	9.30am	Holy Communion (Village Hall)
1 Aug	10.00am	Benefice Eucharist at Tadmarton

† † †

MONTHLY COLLECTORS & CAR BOOT SALES SUNDAYS in SIBFORD VILLAGE HALL

The next sales will be on Sunday 6 June & 4 July, from 2.00 to 4.00pm. Refreshments available. Phone 251339 to book a table.

☺ ☺ ☺

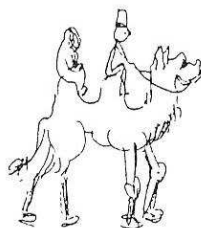
UPPER WHEATHILLS FIELD

Sibford Gower

AGRICULTURAL GRAZING

This four acre field will be available
for letting from 1 July 1999.

Applications in writing, with offered rental,
should be addressed to: The Secretary,
The Town Estate Charity, Quince Cottage,
Sibford Gower, OX15 5RT.



SIBFORD BUS SERVICES

1. FREE BUS SERVICE

Sponsored by the Town Estate Charity

			Depart	Return
Wednesday	2, 16 & 30 Jun	to Chippy	10.00am	12.00noon
Friday	11 & 25 Jun	to Banbury	10.00am	12.00noon
Friday	9 & 23 Jul	to Banbury	10.00am	12.00noon
Wednesday	14 & 28 Jul	to Chippy	10.00am	12.00noon

The pick-up points are:

Banbury Bus

Village Hall

Crossroads

High Meadow

Chippy Bus

Village Hall

High Meadow

Crossroads

The Colony

2. MIDLAND RED. 480

Mon - Sat (M-S).

Shipston - Sibford - Banbury

Not Sat (NS).

Sat only (SO).

	M-S	NS	SO	M-S	NS
Shipston	-	-	9.20am	-	-
Sibford Gower Crossroads	7.30am	9.00am	9.45	11.45am	12.45pm
Sibford Ferris School	7.32	9.02	9.48	(11.38)	(12.38)
Banbury Bus Station	8.00am	9.30am	10.15am	12.15pm	1.15pm
	M-S	SO	NS	M-S	M-S
Banbury Bus Station	11.15am	12.15pm	12.15pm	2.15pm	6.00pm
Sibford Ferris School	11.38	12.47	12.38	2.38	6.23
Sibford Gower Crossroads	11.40am	12.50pm	12.40pm	2.40pm	6.25pm
Shipston	-	1.15pm	-	-	-

3. CHERWELL VILLAGER. 55

Sibford - Banbury

	Outward	Return (read up)
Wednesday only		
Sibford Gower	9.55am	1.55pm
Sibford Ferris	9.57	1.53
Hooky	10.05	1.45
Bloxham	10.35	1.15
Banbury	10.50am	1.00pm

4. CHERWELL RURAL DIAL-A-RIDE SCHEME - A mini-bus with tail-lift to take ELDERLY OR DISABLED PEOPLE, and escort, to Banbury (max fare £1.20). Door-to-door service. Book at least one day in advance.

Operates on WEDNESDAYS ONLY.

*** Phone 263777 for more details or to book. ***

THE DEADLINE for CONTRIBUTIONS
for the JULY issue of *Sibford Scene Extra*
will be

* TUESDAY 15 JUNE *

Contributions to Treasurer, Shop or any Lamb

*



THE DEADLINE for CONTRIBUTIONS
for the AUG/SEPT issue of *SIBFORD SCENE*
will be

***** TUESDAY 13 JULY *****

Contributions to Editor, Treasurer or Shop

* * * * *

FORTHCOMING EVENTS

DIARIST - vacancy

1999

Aug 21 Sat	Sibford Horti Society Annual Show	Sibford Village Hall	780543
Nov 27 Sat	Sibford Church Bazaar	Sibford Village Hall	780275
Dec 4 Sat	Coffee Morning, Crafts, Cakes, Plants	Sibford Methodist Chapel	780461

2000

June 22-24 SIBFORD MILLENNIUM PAGEANT (MM) THE SIBFORDS

* = NEW or CHANGED ENTRY.

-----S-----

WEEKLY EVENTS

Guides	Hook Norton	Monday	evening
Indoor Bowls	Village Hall	Monday	2.00 - 4.00pm
Brownies	Village Hall	Tuesday	5.15 - 6.45pm
Tots'N'Babes	Friends Meeting Hse	Wednesday	10.30 - 12noon
Fielding Day Centre	Friends School	Wednesday	12.45 - 4.45pm
Badminton	Friends School	Wednesday	7.30 - 9.30pm
Beavers	Village Hall	Friday	4.30 - 5.45pm
Cub Scouts	Village Hall	Friday	6.00pm
Scouts	Village Hall	Friday	following Cubs
Playgroup	Village Hall	Mon, Wed, Thur, Fri	9.00am - 12noon

-----S-----

LOCAL CORRESPONDENT for BANBURY GUARDIAN

Muriel Chandler (Telephone & Fax 780025)

2 Pound Lane, Sibford Gower.

Copy for Guardian by MONDAY please.

S

LOCAL CHERWELL DISTRICT COUNCILLOR - David Green (Tel 780444)

CALENDAR for JUNE 1999

- Tuesday 1st Methodist Chapel Anniversary - see p20
 Sunday 6th Collectors & Car Boot Sale, Vill Hall 2-4pm - see pp11&21
 Tuesday 8th Friendship Club outing to Hatton Locks - see p 9
 Wednesday 9th Methodist Chapel - Coffee Morning - see p20
 Wednesday 9th Mobile Library in Sibfords & Burdrop (2.25 - 4.20pm)
 Saturday 12th Sibford School - Open Day & Sports Day - see p17
 Saturday 12th Skip in the Gower - Pound Lane
 Saturday 12th *Twelfth Night* - Leasowe House, Sibford Gower (780569)
 Tuesday 15th LEO Club meeting - 'Weekenders Clothing' - see p 3
 TUESDAY 15th * DEADLINE for JULY issue of *SCENE EXTRA* - see p23 *
 Wednesday 16th Sibfords Society EXTRA meeting - see p15
 Saturday 19th Colony Open Garden - for Roof Repair Fund - see p 1
 Monday 21st Sibford Ferris Parish Council meeting - see p17.
 Tuesday 22nd Friendship Club meeting - see p 9
 Wednesday 23rd Mobile Library in Sibfords & Burdrop (2.25 - 4.20pm)
 Friday 25th Sibford School - Open Morning - see p 2
 Saturday 26th Sibford Annual Village Fayre & Pig Roast - see p11
 Sunday 27th Sheila's Bring-&-Share 90th Birthday Lunch - see p 6
 Wednesday 30th Sibfords Society visit to Wroxton Abbey - see p15

CALENDAR for JULY 1999

- Saturday 3rd Scouts Paper Collection - from homes or at Village Hall
 Saturday 3rd Skip in the Gower - Barley Close
 Sunday 4th Collectors & Car Boot Sale - Village Hall - see p21
 Tuesday 6th Friendship Club outing to Weymouth - see p 9
 Wednesday 7th Mobile Library in Sibfords & Burdrop (2.25 - 4.20pm)
 Thursday 8th Sibford Horti Society, Oxford Botanic Gardens - see p13
 Saturday 10th Birmingham Symphonic Winds Concert, Sibford School, MM
 Sunday 11th Sibford Gower Open Gardens - see p12
 TUESDAY 13th * DEADLINE for AUG/SEPT issue of *SCENE* - see p23 *
 Saturday 17th Recycling Units in the Gower - Acre Ditch
 Saturday 17th Skip in the Gower - Village Pond
 Saturday 17th Sibford Church Fancy Dress Garden Party - see p13
 Sunday 18th Senior Citizens Tea Party, Temple Close - see p 1
 Tuesday 20th Friendship Club meeting - Mrs Hichens - see p 9
 Wednesday 21st Mobile Library in Sibfords & Burdrop (2.25 - 4.20pm)
 Saturday 31st Skip in the Gower - Acre Ditch

* SIBFORD SCENE *

Editor: Ray Henbrey, Virginia Cottage, H'k Norton Rd, Sibford Ferris (788265)
 Treasurer: Timothy Wimbush, The Rectory, Acre Ditch, Sibford Gower (780555)
 Advert Mgr: Ivor Hopkyns, Elmridge Farmhouse, Sibford Gower OX15 5RT (788367)
Scene Extra Editor: Adrian Lamb, Grounds Farm, Sibford Ferris (780380)
 Personal Adverts: up to 4 lines £1.00, 8 lines £2.00 - contact Editor.
 Commercial Adverts: small £15.00 p.a. - consult Ivor for future space.
 Loose Leaf Insertions: £10 for distribution - ask Editor for details.