

# SIBFORD SCENE

April - May 1999





## SIBFORD SCHOOL

SIBFORD FERRIS, BANBURY,  
OXFORDSHIRE OX15 5QL  
Tel: 01295 781200 Fax: 01295 781204  
E-mail: Sibford.School@dial.pipex.com  
www.sibford.oxon.sch.uk

A school with a distinctive Quaker ethos for boys and girls aged 5 - 18. Day and boarding places for 320 pupils in beautiful Oxfordshire countryside.

*Each talented ~ Each different ~ All valued*

### OPEN MORNINGS

10 am

on Monday, 3rd May & Friday 25th June

- High quality education for all
- Wide range of GCSE options
- Flourishing Sixth Form with a wide range of A level and GNVQ choices
- Nationally renowned Dyslexia Department with specialist Maths support
- Use of Information and Communications Technology across the curriculum
- Excellence in the Arts

Transport available for day pupils

Please contact the Admissions Secretary for further details

Sibford School - Established in 1842  
Registered Charity no. 1068256

Sibford School is a charity limited by guarantee registered in England under no. 3487651

*Something Old, Something New,  
Something Borrowed, Something Blue*

*Exquisite Silk Flowers To Hire  
Vintage Wedding Cars*

Clark & Dee Spencer

Stonepit Cottage, Epwell Road, Shutford, Oxon OX15 6HE  
Tel: 01295 788233



### TRADITIONAL & CONTEMPORARY DECORATION

Winners of Banbury Business Awards 1997

'New Business of the Year'

Featured in 'House Beautiful', 'Perfect Home' and  
on Central TV's 'Our Home'

FRIENDLY \* PROFESSIONAL \* EFFICIENT

Approved by DULUX 01295 267024

STUART and JOYCE

welcome you at

THE GATE HANGS HIGH

Hook Norton

Traditional Ales in our friendly pub  
with excellent food available in the  
extended restaurant

Evening Bookings Advisable

Telephone 01608 - 737387

BAR MEALS ALSO AVAILABLE

Open Seven Days per Week.

Bar only on Sunday evenings.

The Gate Hangs High & Hinders None,  
Refresh & Pay and Travel On!

# Oddjob

CARPENTRY

PLUMBING

ELECTRICS

HOUSEHOLD REPAIRS

SECURITY

HEATING INSTALLATION

KITCHEN FITTING

FOR A COMPREHENSIVE AND RELIABLE  
LOCAL SERVICE

HUGO SEELY 01295 780355

FREE NO-OBLIGATION ESTIMATES

No job too large or too small

Excellent local references available



COME and SEE  
OUR MILLENNIUM PANELS  
THE THREE VILLAGES  
in  
EMBROIDERED SPLENDOUR  
at  
THE MILL  
Spiceball Park, Banbury  
20th APRIL - 9th MAY

#

Annual Spring Clean Sibford Ferris  
Meet at Ferris Cross Roads Lane's End  
10.30 a.m. Saturday 27<sup>th</sup> March 1999

Please come and help to spruce up the village for an hour  
or so. Gloves etc. provided.

#

**ANNUAL LITTER BLITZ IN GOWER - SATURDAY 24 APRIL**

If you care about the look of the village, meet us at the  
Village Hall at 2pm on the day, to help tidy up the verges &  
public areas. Sacks and gloves will be provided. P.B.

#

**'RAISE the ROOF' JUMBLE SALE - Saturday 8 May**

2pm - Village Hall - Entrance 20p

Items for Sale to Jane Holliday or Susan Heath, please.

\*\* In aid of Church Roof Repair Fund \*\*

# Nature Notes.

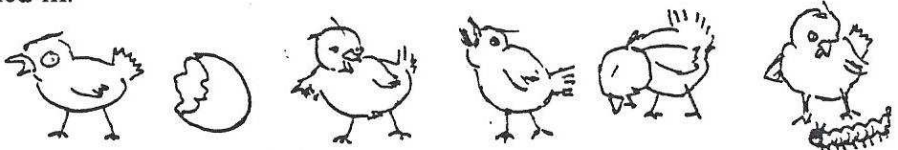
**Feb 23rd.** Tree sparrows are, for the first time, feeding at our peanut tubes. There were 6 of them at one time today. They are quite aggressive and don't give way easily even when a flock of greenfinches come to feed.

**Feb 25th.** Since long-tailed tits started coming to nut feeders around the village a month or so ago, I have made some enquiries and find that they also started coming to the nuts put out by several different people in the Banbury area at about the same time. A similar thing happened a year or two ago when goldfinches began feeding on peanuts and sunflower seed at a few places in the village and I heard that people in other areas were getting them too. It is not easy to understand why birds that have never or rarely visited birdtables should suddenly change their habits over such a wide area.

**Mar 5th.** Two goldfinches were feeding on peanuts and sunflower seed for the first time this year. A goldcrest also came for a few moments. It has come a few times this year but never feeds for long on what seems to me to be an unnatural diet for such a bird.

**Mar 14th.** Great spotted woodpeckers have made a lot of noise with their drumming in the valley between our villages recently, often answering each other. One drummed close to our bungalow this morning, using what sounded like a cracked branch as a sounding board and then flew off towards a rival that was drumming lower down the valley. I have also heard a green one calling so the valley is well populated with woodpeckers. We had a single siskin on the peanuts today and though much smaller than all the greenfinches it was boss and stayed for a good feed. It is usually in March and April that we see them.

**Mar 17th.** These last Three warm days have brought the butterflies out of hibernation, particularly the yellow brimstones. The warmth has also made for noisier mornings with the rooks, which are very early risers, passing over before the owls have finished hooting. Following that we had a dawn chorus which is quite strong now that the blackbirds have joined in.





**THE 1999 BROWN ENVELOPES APPEAL**  
on behalf of the Sibford Scene Funds.

Yes, dear readers, here we are again with our annual appeal for your help to keep the Sibford Scene and Sibford Scene Extra going for another year.

As usual, you are once again asked to put **your annual voluntary contribution** (cash or a cheque payable to **Sibford Scene**) into the **enclosed BROWN ENVELOPE** (which this year may actually be a **WHITE ENVELOPE**), and drop it into the **Collection Box at the Village Shop or into the letter-box at one of the addresses listed below.**

**The suggested contribution is still £2 per household,** although larger amounts would, of course, be greatly appreciated!

Remember, since we now publish right through the Summer, it's now a case of "Buy 10, get 1 free"!

**THANK YOU - The Editor.**

£ £ £

**LETTER-BOXES for BROWN ENVELOPES**

**SIBFORD GOWER**

Roger Powell	6 The Colony
Petra Berry	2 Barley Close
Mollie Mulley	Old Post Office, Main St (garage door)
Kathleen Winter	Cels Bield, Backside Lane
Ann Spicer	7 High Meadow
Timothy Wimbush	The Rectory, Acre Ditch

**BURDROP**

Sheila Baseby	Park Farm House
Colin Frith	Barn Close

**SIBFORD FERRIS**

Jim Shields	West Town Cottage
Ray Hembrey	Virginia Cottage, Hook Norton Rd
Bruce Horn	3 Cotswold Close



\* also Collection Box at Village Shop \*



## 'Tripping the Light Fantastic' - a Review by a Visitor to Sibford

"Tripping the Light Fantastic" - a New Perspectives and Oxfordshire Touring Theatre Companies co-production, performed at Sibford Village Hall.

Two well known theatre companies came together for this performance/of Jane Buckler's "Tripping the Light Fantastic", a play that centres around village life and five very different characters.

It begins in the local petrol station, where the gum chewing young attendant Gary meets up with a pair of shoes that change his aspirations. These are no Cinderella glass slippers but a pair of ballroom dancing shoes, left by Harry, whose years in retirement are spent whirling the ladies round the dance floor.

The play centres around Harry's would be romance with Maggie, whose intentions are more firmly on the grouchy Frank, her potbellied dance partner and the teenage Gary and Lisa. Particularly in the second half of the play, as they work towards the local dancing competition with a few changes of partners along the way, the characters really start to come alive.

Frank develops a sense of humour - and proportion - after a dream meeting with a old flame. Actor Mike Afford, who plays Frank and has appeared in roles as diverse as Ali Baba and Toby Belch in Twelfth Night, has some of the best lines and delivered them with great underplayed humour.

The final scenes at the dancing competition are wonderfully convincing, with the young Lisa and Gary moving effortlessly from absolute beginners to stirring performers. Lisa - played by Yorkshire lass Jennifer Fordham and Gary - played by Daniel Martin, were both very charismatic, and it should be interesting to watch their future progress.

Completing the cast were Rosemary Macvie as Maggie, and Graham Colclough as Harry, whose TV work includes Coronation Street, The Bill and Emmerdale. Performing in such a small and intense setting, with the actors moving and adding props as they went along, cannot be easy but all five carried it off like the true professionals they so obviously are.

These performances make for a memorable evening out with their own unique atmosphere, and the wine and nibbles served at the interval were greatly appreciated. The greatest compliment perhaps came from my 13 year old daughter Amy, one of the younger audience members. She started to dance when she got in the car park - albeit after everyone else had gone home - and hummed the dance numbers all the way home to Sezincote. Surely proof that "Tripping the Light Fantastic" really did capture the imagination of all ages.

**S.WEBBER**  
**BUILDING AND JOINERY**  
*EST. 1976*

**WINDOWS/DOORS**  
**EXTENSIONS**  
**KITCHENS**  
**LOFT CONVERSIONS**  
**MAINTENANCE**  
**AND MORE**

**TEL: 01295788112**  
**MOBILE: 0467771380**

**MEADOWCROFT**  
**SECRETARIAL SERVICES**  
Tel. 01295 780741 + *AnsaFone*  
(Evenings/Weekends)  
Tel. 01295 788106 + *AnsaFone*  
Letters, Manuscripts,  
C.V's, etc.  
**LASER PRINTER**  
**Photocopying/ Fax**  
**VERY COMPETITIVE RATES**  
Collection/Delivery  
Service if required.

## FRIENDSHIP CLUB

Unfortunately we were a little too early to see many daffodils in bloom at Sherbourne, and also it was very wet and muddy underfoot, nevertheless, we had a lovely ride into the Cotswolds and enjoyed the scenery.

Arrangements for April and May as follows :-

**Tuesday April 6th.** Village Hall at 2.00 when we shall have an Easter tea. We would be grateful if members could bring a plate of food.

**Tuesday April 13th.** An outing is being arranged, destination to be decided.

**Tuesday May 4th.** Village Hall at 2.00 for the A.G.M.. Tea provided afterwards by the committee.

**Tuesday May 25th.** An outing to Woburn Abbey.

B.H.

*Sibford Ferris  
Stores and Post Office.*

*Your Local Convenience Shop*

Bread baked daily on the premises

Fresh cakes and savouries

Newspapers & Cigarettes

Beers, Wines and Spirits

Chilled & Frozen Foods

Dry Cleaning, Photocopying and Fax Services

National Lottery Agent

*And lots, lots more. . . . .*

Telephone you order for free local delivery

**Opening Hours**

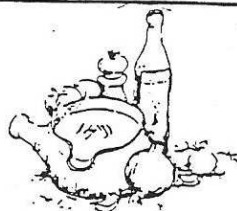
**7.30am to 6.00pm Monday to Saturday.**

**8am to 1pm on Sunday.**

Terry & Judith

Main Street Sibford Ferris

Telephone 01295 788317



*Méli-Mélo Cuisine*

*Elegant & Imaginative Food for  
Private and Corporate Occasions*

*French & English Country Cuisine*

*Business Functions, Dinner Parties,  
Hot & Cold Buffets, Canapés,  
Anniversaries & Christenings*

*Telephone Victoria on  
(01295) 730338*

\* \* SIBFORD L.E.O. CLUB NEWS \* \*  
(Ladies Evening Out Club)

Only a handful of members gathered to view Miriam's video of the palaces of St Petersburg and to plan our future programme; consequently, only the April meeting was arranged.

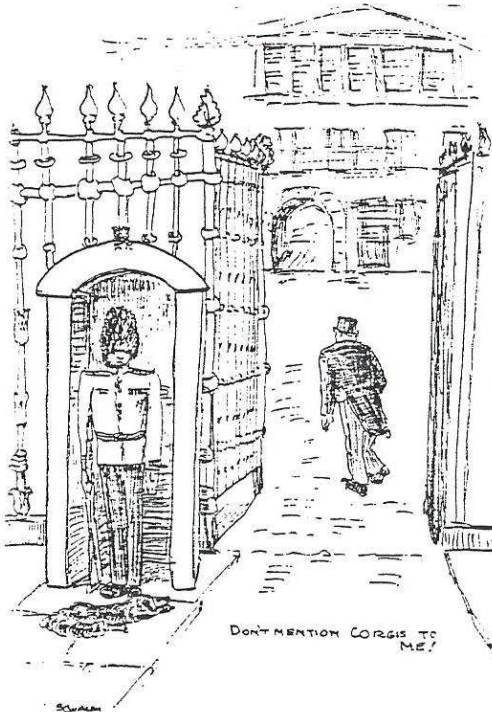
This will be held at 8pm on Tuesday, 20 April, at Gaynor Harper-Tarr's home at Folly Farm Court in the Ferris. Each member is asked to bring along a small piece (a few ounces) of an 'unusual' cheese to be shared out for a 'Cheese Taste-Off' - crackers & wine will be provided to help it down. That should set our grey cells working to plan our programme for the next few months, so please come along with some suggestions.

M.H.

\* \* \*

# # #

Eric (sans dog) goes to tea  
with The Queen



WANTED URGENTLY

**AMSTRAD**

**WORD PROCESSOR**

for production of

SIBFORD SCENE

Phone Editor

788265

**K.G.PREEDY & SON**  
**GENERAL BUILDERS**

For All your building work

\*

SPECIALISTS in STONE WALLS Etc

\*

Braggingtons Lane, Middleton Cheney

Tel; 01295 - 710977

\*Sibford References Available\*



## SIBFORD FERRIS PARISH COUNCIL

There are awards available for environmental projects carried out in the village - details from the clerk.

Do you have views on public transport needs in the village (e.g. a teenager special to Banbury on Friday and Saturday evenings)? If you do please let me know.

Wheathills field now belongs to the two villages. We believe that it should be used for truly agricultural purposes, not horses, and that caravans, motor cycle scrambling clay pigeon shooting, etc. should be banned. Let us have your views.

David Moir 788241

### **The Annual Parish Meeting Sibford Ferris**

will be held on Monday 19<sup>th</sup> April at 8 p.m. in room S3 of  
the Friends School

Come and hear about the work of the council during the past year. Get an update on planning issues. All villagers are welcome to this and all our meetings.

### **The Sibberts Amateur Dramatic Society**

If you would be interested in participating please let me know. We need actors, directors, musicians, lighting crew, painters, scene builders, costume makers and general backstage helpers.

Phone David Moir on 788241 (after 19<sup>th</sup> April)

## SIBFORD BROWNIES

Isabel and I are resigning from Sibford Brownies from the end of July this year. We have both been running brownies for many years now and feel it is time to hand over to someone else. We both travel quite a long way to run brownies and we feel it would be better if someone locally took over.

We have, at present, 23 brownies and 2 Pack Leaders (guides) who come each week to help us. It would be very sad if the Pack had to close with such a strong group of brownies.

If anyone is interested and would like to talk it over with me, please ring on 01295 810918.

Vivienne Scouse



The Old Town Workshop  
Saint George's Close  
Moreton-in-Marsh  
Gloucestershire  
GL56 0LP

Tel/Fax: 01608 650026  
Mobile: 0860 225 608

**ALAN HESSEL**  
ANTIQUE RESTORATION



SPECIALIST CONSERVATION OF FINE PERIOD FURNITURE

## RED HORSE FUELS

*(R.C. Hoggins)*

Windmill Farm, Oxhill, Warwickshire

Telephone: 01926 642832

Solid Fuels and Logs  
Bottled Gas and Paraffin  
Peat, Compost, Growbags, Soil,  
Sand, Gravel, Cement

Ring for Delivery or collect from our  
new yard on the A422

## Bed & Breakfast


AGDON FARM

Nr Brailes

Comfortable rooms  
in old stone farmhouse

Tel: Maggie Cripps

01608 685226




flowers for all occasions

*Petals*

43a Market Place, Banbury, Oxon. OX16 8NW  
(Next to Laura Ashley)

Telephone: (01295) 255450



## SIBFORD HORTICULTURAL SOCIETY

The next meeting will be on **Wednesday 14 April** at 8pm in the Village Hall; Paul Williams of Boughton House Gardens will be talking about the Gardens.

The Annual Coffee Morning will be held on **Saturday 17 April** at 10.30am at Ellen Warwicker's home, The Court House in the Gower. Items for the 'for sale' tables will be gratefully received. All are welcome to come along.

The Spring Plant Sale will be held on **Saturday 22 May** - the venue will be announced in the next Sibford Scene Extra.

# # #

### INFORMATION about THE SKIP in SIBFORD GOWER

Just a reminder that the skip is for Sibford Gower and Burdrop residents only.

The purpose of the skip is to dispose of bulky house hold waste with the exception of hazardous waste. This includes waste such as garden chemicals, paints, solvents and oil. Residents can arrange for such materials to be removed and disposed of by the "Toxic Taxi" on 01865 815796. Commercial waste or builders rubble must not be put in the skips.

If the skip is full, PLEASE do not deposit waste, phone 01295 252535 to arrange for a special bulky household waste collection. Up to four items can be picked up free of charge, within 10 days.

Petra Berry, Clerk to Sibford Gower Parish Council.

## BISHOP BLAIZE INN 17TH CENTURY FREEHOUSE

BURDROP, SIBFORD GOWER (01295 780323)

Well-kept range of Traditional Beers and Guest Ales

Monday Night Take-aw' Fish & Chips  
Friday Dinner Open 30.30pm

**BAR FOOD SERVED**

Mon to Sun 12noon - 2pm  
Mon To Sun 7pm - 9.30pm

Traditional Sunday Lunch

Patio & Large Garden with Superb Views!

Sam, Sheila and Zebby Welcome You



## VILLAGE POND

There have been several requests for information on the current status of the village pond and the outlook for its maintenance and improvement. Historically, the pond has been a feature of our village for hundreds of years, attracting generations of families to enjoy the frogs, ducks, fish, plants and other wildlife. For various reasons, over the past few years, the water table has dropped and, especially during the summer months, the water has become very shallow. Because of this a large number of mature carp were confiscated as they were deemed to be in distress.

Sometime ago a pond committee was formed by the Sibford Gower Parish Council; Committee Members include Roger Powell, David Soden, John Berry, Ivor Hopkyns and Fred Inns, who, with the help of other volunteers, try to keep the pond and the surrounding area attractive. Every summer the pond is drained and cleaned, usually on a weekend when the skip is nearby. There have also been several attempts to introduce plants and small fish to the pond.

As almost 75% of village ponds in the U.K. have disappeared over the past 100 years, The Heritage Lottery fund has announced a programme to restore up to 1,000 village ponds. We have taken the first step of registering in the programme by forwarding photographs and other basic information and, as we appear to meet the selection criteria, our registration has been confirmed. We are now awaiting details on how to apply for a grant.

In the meantime, we believe we have located several springs nearby which we shall attempt to divert into the pond, if necessary. Blanketweed has been a problem over the last two or three summers and is skimmed off three or four times a month. If anyone thinks they have a better solution to this problem, or would like to help with the cleaning and maintenance, please contact one of the committee members.



There will be a meeting for those interested in helping to make Costumes for the Sibford Millennium Pageant at Cathy Ryall's house, Fairview, Main Street, Sibford Gower (just up the road from the Endowed Primary School) on Tuesday 4th May 1999 at 7.30 pm. This will be a briefing meeting to explain requirements and numbers and plan the work load.

There will be a similar meeting for those interested in helping to make Properties on Thursday 13th May 1999 at 7.30 pm at Keith Hicks' house, Farthings, Pound Lane (just past the entrance to High Meadow).

It is hoped that as many as possible can be at these meetings as there will be a great deal to do in the time before June 2000 when the Pageant is to take place.



Saturday 24th April  
from 8pm onwards  
£12.50 per ticket

Join us for an evening at  
The Manor House  
Sibford Gower



Former home of Pageant Master  
Frank Basegills

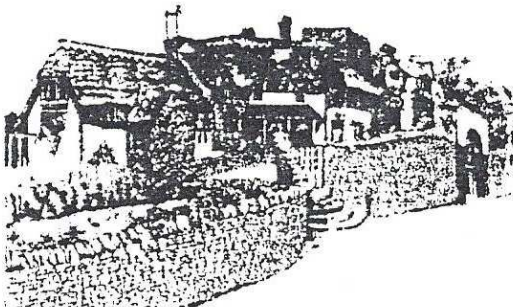
Your evening will include:

> Wine



Hot buffet <

> Musical  
entertainment



Help raise funds  
Enjoy a fun evening out  
and

Discover more about our own pageant  
next year!!

Tickets: £12.50 each  
(inc. drink, food &  
entertainment)  
Call Elaine on: 01295 780287  
Dress: Smart



Mon/Wed/Thurs/Fri  
9.00 - 12.00  
Sibford Village Hall  
O.F.S.T.E.D. approved  
For ages 2½-5 years

Firstly, we say "Goodbye" to many children who are starting school after Easter. We wish them all "Good-luck" in their forthcoming 'adventures'.

Secondly, we express our thanks to Muriel Chandler for sorting out the heating problem!

We offer a safe, friendly and stimulating environment. We also have an enclosed play-area. For a free brochure or for any information regarding Sibford Playgroup, please call Julie Bruggerwirth (Supervisor) 01608 730861



### GODSWELL NATURAL THERAPY CENTRE



Godswell Lodge, Church Street, Bloxham, Banbury OX15 4ES

#### INTRODUCTORY WORKSHOPS

- |                |   |                  |
|----------------|---|------------------|
| Sat. 13 March: | Shiatsu   | Lorraine Newman  |
| Sat. 27 March: | Homoeopathy   | Juliet Smith     |
| Sat. 10 April: | McTimoney Chiropractic                                  | Brenda Mann      |
| Sat. 24 April: | Optimum Nutrition                                       | Paula Falck      |
| Sat. 8 May:    | Reflexology & Remedial Massage                          | Elizabeth Webber |
| Sat. 22 May:   | Creative Thinking with Neuro-<br>Linguistic Programming | Lorraine Garrett |

10.00am - 12.30pm

Coffee & Biscuits. Workshops will be free of charge.

Numbers limited.

Early booking essential - Ring 01295 720347 (Bloxham Surgery)



## W.I.NEWS & INFORMATION

A warm welcome awaited us (thanks to the new Village Hall boiler !) where attendance was good when we met for our A.G.M.

According to the treasurer's report we were financially healthy and the secretary's annual report reminded us of our active and interesting past year. The president's address paid tribute to her committee and fellow members who had ensured her pleasant and enjoyable year of office - Mrs Power was unanimously re-elected.

On display was a delightful array of parchment Easter cards, the result of the president's tuition, also an immaculate set of doll's clothes, made by Mrs Walpole for the forthcoming group meeting competition.

Entries in the competition for 'A Single Stem' were few but varied, and the overall competition winner for the year was Mrs Pearlman.

Mrs Soden and Mrs Hutchinson provided tempting refreshments, and a Bring & Buy stall offered a wide selection of goods. Trade was brisk and must have resulted in us being even healthier !

We meet again on April 13th. when

**Mr John Woolly**

speaks on

**"The Great Train Robbery"**

M.C.

THE VILLAGE SHOP - HOOK  
NORTON

\* NATIONAL LOTTERY \*

Grocery - Greengrocery - Bakery

Wines - Spirits - Confectionery

Newspapers - Magazines - Cards

Flowers - Plants and Accessories

Video Rental - Bottled Gas

Open Monday to Friday 7am to

9pm

Saturday 7am to 8pm

Sunday 8am to 6pm

Telephone: 01608 737245

**DAVID MALONE**

HIGH CLASS PAINTER AND DECORATOR

4 Acre Ditch  
Sibford Gower  
Banbury  
Oxfordshire OX15 5RW  
Tel: (01295) 780546



CTTB REGISTERED

*Broken Colour Effects and Paperhanging a Speciality*

# HOOK NORTON COMMUNITY EDUCATION CENTRE

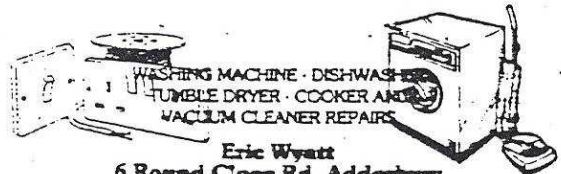
Courses for the summer term start on Monday 19 April and include Yoga, Drawing & Painting, Tap Dancing, Holiday Spanish, Golf, Stay Supple, Greenhouse & Conservatory Gardening, Plant Propagation and Tennis coaching.

For more information and a brochure please ring 01608 730052 or call into the office - HNCEC, The Primary School, Sibford Road, Hook Norton OX15 5JS

## Triple M Services

Quality Repairs to  
All Makes Of Car And  
Light Commercial  
Vehicles  
MOT Prep  
Welding  
Call M.J Harris  
on  
Sundridge 780614

## ADDERBURY DOMESTIC APPLIANCES



Eric Wyatt  
6 Round Close Rd. Adderbury  
Tel. No. (0295) 310116

### *-Ann Woolgrove-*

#### *Fabrics & Soft Furnishings*

*- choose from hundreds of fabrics for  
Professionally made curtains, pelmets  
and blinds. Loose covers, cushions  
and re-upholstery.*

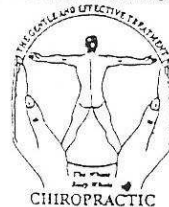
*Bedspreads and headboards.*

*Wallpapers and decorating service.*

*Please phone for details*

*-01295 788145-*

MCTIMONEY-CORLEY



## John Mulley

CHIROPRACTOR

DC MBAAC

THE OLD POST OFFICE,  
SIBFORD GOWER, BANBURY,  
OXON. OX15 5RT.

Tel. (01295) 780629

## LETTER from SIBFORD VILLAGE HALL COMMITTEE

The production of "Thurtinkles Telling Tales" had an audience of over one hundred and was much appreciated by the young members of the audience. This raised £35 for Hall funds and we have already been asked to have another like this in the future.

"Tripping the Light Fantastic" was enjoyed by all 37 who attended and it was sad we didn't have a larger audience for the hardworking theatre production team who transformed the Hall. Where else can you have a professional theatre evening out, with a glass of wine and nibbles provided free in the interval, for £3.50 or just £1.75 for senior citizens? We have to run these events in conjunction with the Cherwell District Council, to ensure we are not out of pocket, and after paying the £85 minimum fee to them, we were left with just £7.75 for Hall funds. At the moment it is not sure we will be holding any further productions but when the Council send their booklet saying what is on offer, we will put these forward to all of you, to see if you would like to support such events in our Village Hall.

The March Collectables and Car Boot Sale raised £89.35 for Hall funds, again having over 150 buyers through the door. The next Sale is on Easter Sunday, 4th April, tables at £5 - please ring 01295 251339. Refreshments available.

Thank you for all your comments about the temperature in the Hall now. We are very pleased to hear that we have just been given a grant from Cherwell District Council of £1,120 to help with upgrading the heating system, particularly as, having just had to have a ten yearly electrical inspection of the Hall, we may have to spend a little more money on the emergency lighting and possibly a fire alarm system.

The Hall offers very good facilities for private functions at competitive rates, complete with a safe childrens outdoor playing area. For details please ring our Booking Secretary on (01295) 780461.

The next meeting to discuss the Annual Fayre on Saturday, 26th June, 1999, starting at 1.00 p.m., is on Wednesday, 21st April, at 8 p.m. in the Bishop Blaize Inn. Anyone who would like to attend these informal meetings and help with the Fayre, either before or on the day, would be very welcome. We have already received some good ideas for the Fayre but do please keep these coming, to either Ginnie on 780373 or Muriel on 780025.

An extra-ordinary meeting of the Village Hall Committee has been arranged for Wednesday, 28th April, to discuss possible lottery funding for an extension. Should anyone have any comments concerning this, please phone Ginnie or Muriel (numbers as above). The Sibford Village Hall Annual General Meeting is on Wednesday, 19th May, 1999, at 8 p.m., when all are welcome.

• # # #

### CORRESPONDENCE received by the EDITOR

Just a reminder to all our readers that our policy is, and always has been, to ignore all anonymous correspondence, whether it be a letter, article or advert.

Although the writer's name (and, preferably, telephone number) must be provided to the Editor, these details will not be divulged if so desired.

The Editor



## REMEDIAL MASSEUSE

STRESS AND TENSION EASED AWAY  
MUSCULAR AND SKELETAL PAIN RELIEVED



Founded 1919

Elizabeth Webber - MAR.LCSP (Assoc)  
Godswell Natural Therapy Centre  
Godswell Lodge, Bloxham, Banbury.  
Telephone 01295 788101

FRANCIS MORDAUNT  
MSSCh, MBChA  
VISITING CHIROPODIST  
To enquire about a Home Visit,  
please telephone;  
01295 730615  
Professional Foot Care  
In Your Own Home

### *the wykham arms*

Sibford Gower 01295 - 780351

A Seventeenth-Century Thatched  
FREE HOUSE

Selection of Real Ales  
HOME COOKED FOOD

\* Wooded Beer Garden \*

Ample Seating in Bar & Restaurant  
Booking Advisable at Weekends

Children Welcomed

## *The Firs Garage*

*a world apart from the rest*

**HOOK NORTON OXON**

(1 MILE NORTH OF VILLAGE)

(01608 737349/01608 737641)



SALES OPEN: Mon - Fri 8am - 6pm, Sat 8am - 5pm, Sun CLOSED  
(Out of hours please phone for an appointment)  
PARTS OPEN: Mon - Fri 8am - 5.30pm, Sat 8.30am - 12.30pm



### WE OFFER YOU

- \*Sales (New and Used)
- \*3 year unlimited mileage warranty (New)
- \*Optional 12 months warranty
- \*Part Exchange
- \*Off Road demos
- \*Service

- \*MOTs
- \*Parts
- \*Body work
- \*Insurance estimates
- \*Attended services (Fuel)
- \*Car Wash
- \*Friendly service and lots more!

ESTABLISHED 1960

IT PAYS TO DEAL WITH A FAMILY BUSINESS

*The Firs Garage would like to thank the local community for their loyal support;  
it is very much appreciated.*

### A Preview of a Letter from Reg Craig.

A heart-warming letter has been received from Reg Craig of the Gower, at present recovering in the Horton after sustaining a broken leg. Reg's letter recounts the details of his accident and, in particular, of the superb help & care given to him by neighbours, ambulance men and hospital staff - not forgetting 'Bonzo'.

Unfortunately, space is at a premium this month, so Reg's full story, including details of the part played by Bonzo, has had to be deferred till next month. Sorry Reg! Ed.

£ £ £

### DONATIONS to SIBFORD SCENE FUNDS from LOCAL ORGANISATIONS

Our treasurer's junior assistant, young Robert Scratchit, was so keen to close out the 1998 page of our leather-bound **Book of Donations** that he overlooked the generous donation to our funds from **Holy Trinity Church**.

This omission has now been rectified and Robert has also inscribed the names of the first two illustrious donors in 1999 - **Sibford Playgroup** and **Sibford (Friends) School** - whose contributions are greatly appreciated. The Editor

£ £ £

### MONTHLY COLLECTORS & CAR BOOT SALES SUNDAYS in SIBFORD VILLAGE HALL

The next sales will be on **Easter Sunday 4 April & 2 May**, from 12.30 to 3.30pm. Refreshments available. Phone 251339 to book a table.

## ACUPUNCTURE

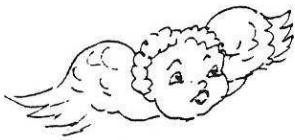
Acupuncture is a gentle and effective treatment for a wide variety of common complaints, including back and joint pain; sinus problems; digestive disorders; depression; PMS; high blood pressure; asthma and skin complaints. Contact me to discuss how acupuncture and traditional chinese medicine could help you.

Hugo Seely, Lic. Ac. M.B.A.C  
Licensed Acupuncturist

Holly Mount, Main Street, Sibford Gower, Oxon OX15 5RT

T: 01295 780355

*Member of the British Acupuncture Council*



## HOLY TRINITY CHURCH NEWS



Receipts for the Sibford Church Roof Repairs Appeal have now reached approximately £38,000, of which loans total £12,000. We are waiting hopefully for certain charities and subject to any help that they may be able to give, we still therefore have to raise £25,000 if we are to proceed with this work.

Our time is now running short if we are to start the work as planned in June as definite instructions must be given to the builders within weeks. With another £15,000 we could do the roof, ceiling and gutter work and leave the internal repairs and decorations until a later date. Would we, however, have any better response to an appeal than as now? Also, we have good quotations now which may not be repeated later. Furthermore, to split the jobs would greatly add to the cost of the second operation: scaffolding which could be used for both operations would have to be removed and then brought back later; costs continue generally to rise.

We have been surprised by some strong comments that the church should spend no money on its roof and should, if necessary, be abandoned. These comments are perfectly valid though the strongest views coming from villagers is that a church building forms a traditional centre of the community and should be retained if at all possible. It is also submitted that the building was passed to us by a previous generation, is held by us in trust and we are responsible to pass it on to the next generation in good order.

We are encouraged by the support that many have given to us but the facts are though that we may soon have to make the decision to cancel the work with the result that the building may be doomed and, sooner rather than later, will have to be abandoned.

Suggestions have been made for coffee mornings and other regular activities to be run. These offers are greatly appreciated and will be welcomed but time is not on our side. They would be a great help as a continuing money raising activity to help pay off the loans which are being offered.

Two members of the PCC, Roger Powell and Norman Nash are making personal visits to people who have not yet responded to the appeal. They may have already approached you but should they contact you in the near future for a visit, please do give them a hearing and, if you would like a visit, please telephone them on 780525 or 780275.



# C H U R C H   S E R V I C E S

Society of Friends	Sunday at 10.30 am
Methodist	Sunday at 11.00 am
Roman Catholic Mass (Wroxton)	Sunday at 9.00 am
(Brailes)	Sunday at 11.30 am
Baptist (Hook Norton)	Sunday at 10.30 am

## Church of England, Holy Trinity, Sibford Gower

1 Apr	7.30am	Matins	(Maundy Thursday)		
2 "	7.30am	Matins	(Good Friday)		
3 "	7.30am	Matins	(Holy Saturday)		
4 "	6.00AM	<b>EASTER DAWN SERVICE</b> on Jester's Hill			
11 "	9.30am	Family Service			
18 "	9.30am	Holy Communion & Baptism			
25 "	9.30am	Holy Communion			
2 May	10.00am	Benefice Eucharist at Shutford			
9 "	9.30am	Family Service			
13 "	8.00pm	(Ascension Day)	Benefice Eucharist, Swalcliffe		
16 "	9.30am	Holy Communion			
23 "	9.30am	Holy Communion			
30 "	9.30am	Holy Communion (Trinity, Patronal Festival)			
6 Jun	10.00am	Benefice Eucharist at Epwell			



+ + +

## THE TOWN ESTATE CHARITY

*UPPER WHEATHILLS FIELD. Representatives of the Sibford Gower and Sibford Ferris Parish Councils and the Charity are holding a meeting on Friday 9th. April to review the administration and utilization of the field. Any residents who made donations towards the purchase of the land and who have views which they would like the Joint Committee to consider should put them in writing and deliver them to their respective Parish Council chairman in advance of the meeting date.*

*BUS SERVICE. On behalf of Barry's Coaches, the Charity wishes to apologize for the non-appearance of the bus on Friday 5th. March. The coach left the garage on time, but had a mechanical breakdown on the way to Sibford - it was most unfortunate that it was such a cold morning.*

P.H.B.

# S I B F O R D B U S S E R V I C E S

## 1. FREE BUS SERVICE



Sponsored by the Town Estate Charity

			Depart	Return
Friday	2, 16 & 30 Apr	to Banbury	10.00am	12.00noon
Wednesday	7 & 21 Apr	to Chippy	10.00am	12.00noon
Friday	14 & 28 May	to Banbury	10.00am	12.00noon
Wednesday	5 & 19 May	to Chippy	10.00am	12.00noon

The pick-up points are:

<u>Banbury Bus</u>	<u>Chippy Bus</u>
Village Hall	Village Hall
Crossroads	High Meadow
High Meadow	Crossroads
	The Colony

## 2. MIDLAND RED. 480 Shipston - Sibford - Banbury

Mon - Sat (M-S). Not Sat (NS). Sat only (SO).

	M-S	NS	SO	M-S	NS
Shipston	-	-	9.20am	-	-
Sibford Gower Crossroads	7.30am	9.00am	9.45	11.45am	12.45pm
Sibford Ferris School	7.32	9.02	9.48	(11.38)	(12,38)
Banbury Bus Station	8.00am	9.30am	10.15am	12.15pm	1.15pm
	M-S	SO	NS	M-S	M-S
Banbury Bus Station	11.15am	12.15pm	12.15pm	2.15pm	6.00pm
Sibford Ferris School	11.38	12.47	12.38	2.38	6.23
Sibford Gower Crossroads	11.40am	12.50pm	12.40pm	2.40pm	6.25pm
Shipston	-	1.15pm	-	-	-

## 3. CHERWELL VILLAGER. 55 Sibford - Banbury

<b>Wednesday only</b>	Outward	Return (read up)
Sibford Gower	9.55am	1.55pm
Sibford Ferris	9.57	1.53
Hooky	10.05	1.45
Bloxham	10.35	1.15
Banbury	10.50am	1.00pm

## 4. CHERWELL RURAL DIAL-A-RIDE SCHEME - A mini-bus with tail-lift to take ELDERLY OR DISABLED PEOPLE, and escort, to Banbury (max fare £1.20). Door-to-door service. Book at least one day in advance.

Operates on WEDNESDAYS ONLY.

\*\*\* Phone 263777 for more details or to book. \*\*\*

THE DEADLINE for CONTRIBUTIONS  
for the MAY issue of Sibford Scene Extra  
will be

\* TUESDAY 20 APRIL \*

Contributions to Treasurer, Shop or any Lamb

\*



THE DEADLINE for CONTRIBUTIONS  
for the JUNE/JULY issue of SIBFORD SCENE  
will be

\* TUESDAY 18 MAY \*

Contributions to Editor, Treasurer or Shop

\* \* \* \* \*

**F O R T H C O M I N G E V E N T S**  
**DIARIST - vacancy**

1999

* Jun 25 Fri	Sibford School Open Morning	Sibford School	781200
Jun 26 Sat	Sibford Annual Fayre, 1.00pm	Sibford Village Hall	780025
Jun 27 Sun	Sheila's 90th Birthday 'Roof Raiser'	Sibford Village Hall	
Jul 10 Sat	Birmingham Symphonic Winds Concert (MM)	Sibford School	
* Jul 17 Sat	Sibford Church Garden Party	?	780275
* Aug 21 Sat	Sibford Horti Society Annual Show	Sibford Village Hall	780543
* Nov 27 Sat	Sibford Church Bazaar	Sibford Village Hall	780275
Dec 4 Sat	Coffee Morning, Crafts, Cakes, Plants	Sibford Methodist Chapel	780461
2000			
June 22-24	SIBFORD MILLENNIUM PAGEANT (MM)	THE SIBFORDS	

\* = New or Changed Entry.

#

**W E E K L Y E V E N T S**

Guides	Hook Norton	Monday	evening
Indoor Bowls	Village Hall	Monday	2.00 - 4.00pm
Brownies	Village Hall	Tuesday	5.15 - 6.45pm
Tots'N'Babes(780036)	Friends Meeting Hse	Wednesday	10.30 - 12noon
Fielding Day Centre	Friends School	Wednesday	12.45 - 4.45pm
Badminton	Friends School	Wednesday	7.30 - 9.30pm
Beavers	Village Hall	Friday	4.30 - 5.45pm
Cub Scouts	Village Hall	Friday	6.00pm
Scouts	Village Hall	Friday	following Cubs
Playgroup	Village Hall	Mon, Wed, Thur, Fri	9.00am - 12noon

#

**LOCAL CORRESPONDENT for BANBURY GUARDIAN**

Muriel Chandler (Telephone & Fax 780025)

2 Pound Lane, Sibford Gower.

Copy for Guardian by MONDAY please.

#

LOCAL CHERWELL DISTRICT COUNCILLOR - David Green (Tel 780444)



## CALENDAR for APRIL 1999

- Friday 2nd Sibford/Broughton choirs, Broughton Church, 7.30pm, see p21  
Sunday 4th Collectors & Car Boot Sale - Village Hall - see p19  
Tuesday 6th Friendship Club meeting - Easter Tea - see p 7  
Friday 9th Meeting re Use of Wheathills Field - see p21  
Tuesday 13th Friendship Club Outing - see p 7  
Tuesday 13th W.I. Meeting - 'The Great Train Robbery' - see p15  
Wednesday 14th Mobile Library in Sibfords & Burdop (2.25 - 4.20pm)  
Wednesday 14th Horti Society Meeting - see p11  
Saturday 17th Horti Society Coffee Morning, Court House, Gower, see p11  
Monday 19th Sibford Ferris Annual Parish Meeting 8pm - see p 9  
Monday 19th Summer Term starts at Hooky Community Ed Centre - see p16  
Tuesday 20th LEO Club Meeting - 8pm - see p 8  
**TUESDAY 20th \* DEADLINE for MAY issue of SCENE EXTRA - see p23 \***  
Tuesday 20th START of SPICEBALL EXHIBITION of SIBFORD PANELS - see p 3  
Wednesday 21st Monthly meeting to organise Annual Fayre, Blaize, see p17  
Saturday 24th Skip in the Gower - Pond  
Saturday 24th Annual Litter Blitz in Gower, Village Hall, 2pm - see p 3  
Saturday 24th Evening at Manor House, Gower for MM Funds - see p13  
Wednesday 28th Mobile Library in Sibfords & Burdop (2.25 - 4.20pm)  
Wednesday 28th Extra-ordinary Meeting, Village Hall Committee, see p17

## CALENDAR for MAY 1999

- Saturday 1st Scouts Paper Collection  
Sunday 2nd Collectors & Car Boot Sale - Village Hall - see p19  
Monday 3rd Sibford School Open Morning, 10am - see p 2  
Tuesday 4th Friendship Club, Annual General Meeting - see p 7  
Tuesday 4th Meeting for 'Costumes' for MILLENNIUM PAGEANT - see p13  
Saturday 8th 'Raise the Roof' Jumble Sale, Village Hall, 2pm - see p 3  
Wednesday 12th Mobile Library in Sibfords & Burdop (2.25 - 4.20pm)  
Thursday 13th Meeting for 'Props' for MILLENNIUM PAGEANT - see p13  
**TUESDAY 18th \* DEADLINE for JUNE/JULY issue of SCENE - see p23 \***  
Wednesday 19th Annual General Meeting, Sibford Village Hall, see p17  
Saturday 22nd Horti Society Annual Plant Sale - see p11  
Saturday 22nd Skip in the Gower - Acre Ditch  
Saturday 22nd Recycling Units in the Gower - Acre Ditch  
Tuesday 25th Friendship Club Outing - Woburn Abbey - see p 7  
Wednesday 26th Mobile Library in Sibfords & Burdop (2.25 - 4.20pm)

### \* SIBFORD SCENE \*

Editor: Ray Henbrey, Virginia Cottage, H'k Norton Rd, Sibford Ferris (788265)  
Treasurer: Timothy Wimbush, The Rectory, Acre Ditch, Sibford Gower (780555)  
Advert Mgr: Ivor Hopkyns, Elmridge Farmhouse, Sibford Gower OX15 5RT (788367)  
Scene Extra Editor: Adrian Lamb, Grounds Farm, Sibford Ferris (780380)  
Personal Adverts: up to 4 lines £1.00, 8 lines £2.00 - contact Editor.  
Commercial Adverts: small £15.00 p.a. - consult Ivor for future space.  
Loose Leaf Insertions: £10 for distribution - ask Editor for details.