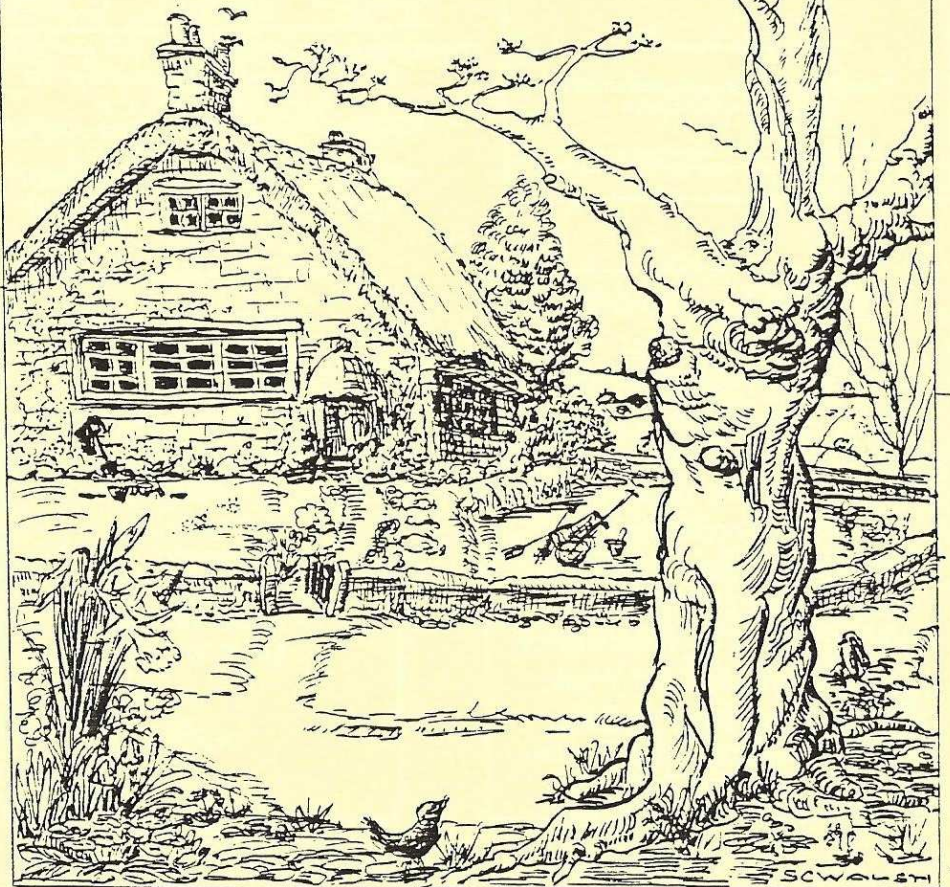


# SIBFORD SCENE

February - March '99



## SIBFORD SCHOOL

SIBFORD FERRIS, BANBURY,  
OXFORDSHIRE OX15 5QL  
Tel: 01295 781200 Fax: 01295 781204  
E-mail: Sibford.School@dial.pipex.com  
www.sibford.oxon.sch.uk

A school with a distinctive Quaker ethos for boys and girls aged 5 - 18. Day and boarding places for 320 pupils in beautiful Oxfordshire countryside.

*Each talented - Each different - All valued*

### OPEN MORNING

10 am on

Monday 1st March 1999

### SIXTH FORM OPEN EVENING

WEDNESDAY 3rd FEBRUARY AT 6 pm

An opportunity to see what Sibford 6th Form has to offer  
and talk to present 6th Form  
A choice of 16 'A' Levels and GNVQ in  
Business and Land and Environment

Transport available for day pupils

Please contact the Admissions Secretary for a  
prospectus and further details

Sibford School - Established in 1842. Registered Charity no. 1068256  
Sibford School is a Charity limited by guarantee registered in England under no. 3487651

*Something Old, Something New,  
Something Borrowed, Something Blue*

Exquisite Silk Flowers To Hire  
Vintage Wedding Cars

Clark & Dee Spencer  
Stonepit Cottage, Epwell Road, Shusford, Oxon OX15 6HE  
Tel: 01295 788233

## NOAH'S ARK PAINTING COMPANY

### TRADITIONAL & CONTEMPORARY DECORATION

Winners of Banbury Business Awards 1997

'New Business of the Year'

Featured in 'House Beautiful', 'Perfect Home' and  
on Central TV's 'Our House'

FRIENDLY \* PROFESSIONAL \* EFFICIENT

Approved by DULUX 01295 267024

## STUART and JOYCE welcome you at THE GATE HANGS HIGH Hook Norton

Traditional Ales in our friendly pub  
with excellent food available in the  
extended restaurant

Evening Bookings Advisable

Telephone 01608 - 737387

BAR MEALS ALSO AVAILABLE

Open Seven Days per Week.

Bar only on Sunday evenings.

The Gate Hangs High & Hinders None,  
Refresh & Pay and Travel On!

## GREEN ACRES

Conference Centre

Residential and Non-Residential

The Conference Manager

Green Acres

Sibford Gower

Banbury

Oxon OX15 5RW

Tel 01295 788115

Fax 01295 780366



*A half-term treat for children & parents.*  
Theatre Afternoon at Sibford Village Hall  
Wednesday 17 February at 3pm

ANIMATION THEATRE COMPANY

presents

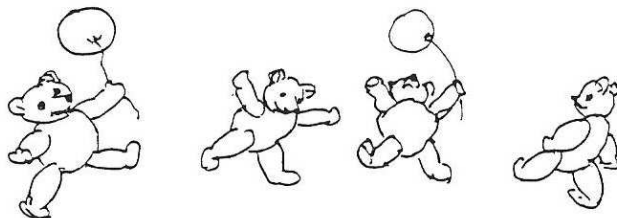
**'THURTINKLES TELLING TALES'**

to delight children of 4 years & upwards.

Tickets: £1.00 only

from Village Shop or Muriel Chandler (780025)

See page 11 for further details.



**An Afternoon of Fashion, Music & Luxury Tea**

In Aid of Sibford Millennium Pageant  
Sunday 28 February, 4-6pm, see page 13.



**Bishop Blaize Kitchen Closed until 6 February**  
see page 9.



**Informal Planning Meetings for Village Hall Annual Fayre**  
see page 11.



**Theatre Evening at Sibford Village Hall**  
Thursday 11 March at 7.30pm

OXFORD TOURING THEATRE COMPANY

returns to entertain us with

**'Tripping the Light Fantastic'.**

A new play for adults & young people.

Tickets: £3.50 adults/£1.75 concessions

from Village Shop or Muriel Chandler (780025)

See page 11 for further details.

## Nature Notes

**Nov 20th.** While in Sheffield today we visited the Rother Valley Country Park which has lakes for sailing, water skiing, fishing and one for birds. There is a golf course, a small farm and a renovated water mill and although there must be thousands of visitors in a summer the areas of woodland and bushes are big enough to be of benefit to wildlife. It is a job to believe that it is largely developed from an opencast mine.

**Nov 26th.** There were about 200 peewits with some gulls on a field of young wheat near the Elm this morning. It is nice to know that there are still some around.

**Nov 29th.** Grey squirrels are ripping the bark off all the dead branches in our lime tree and carrying it away, presumably to insulate their drays.

**Dec 4th.** Last nights sharp frost caused an ice tower to form on my sisters bird bath but it was not as beautiful as the one that formed there two years ago.

**Dec 23rd.** A lone fieldfare, which is lacking tail feathers, spends much of its time eating the apples that I put out. It could well be the same bird that spent the winter here two years ago. Its camouflage is surprisingly good, unless it moves it is very difficult to spot amongst the grass and dead leaves.

**Dec 26th.** Up to three long tailed tits have been coming to our peanut feeders recently. This is the first year that we have had them but sadly we have not seen the marsh tits that have been regular visitors for several years.

**Dec 28th.** I rang some experts for help with the identification of a flock of about 200 waders that flew over and around us in Grange Lane. When I described their quick shallow wingbeats and the way they swirled round as a flock they had no doubt that they were golden plovers and although I have never seen them at Sibford before, they were not at all surprised by their presence as there are several flocks of about that size in the district at the moment. Thinking back to a flock I saw some years ago in the west of Ireland I realise that I should have recognised them.

**Jan 3rd.** I had to spend some time in bed today so my wife hung a peanut feeder just outside the window. It was a few minutes before the birds spotted it but within a couple of hours greenfinches, blue, great and coal tits and a nuthatch were all coming frequently and even a long tailed tit came a few times.

**Jan 9th.** It is thought that birds living close to noisy motorways may be getting tone deaf making it difficult for them to sing tunefully enough to attract a mate.

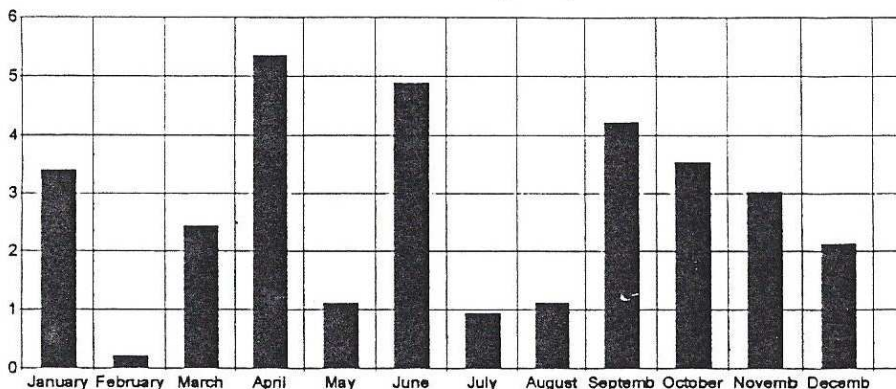
**Jan 16th.** We still have a songthrush, which I have heard on a few occasions recently but I have not heard a mistle thrush which would be singing by now if it were around.

**Jan 17th.** The long tailed tits must be bringing their friends. There were 5 here this morning, four of them crowding on to one tube of peanuts until greenfinches drove them away. I must put up another feeder to reduce competition as they are rather timid.

**Jan 19th.** A goldcrest came and spent a few minutes feeding on peanuts and seemed to like them. This is a first visit as far as we know.

It will not surprise anyone when I say that 1998 was a very wet year. I measured 32.39 inches of rain with April (5.36 in) and June (4.89 in) the wettest months and February (.22 in) and July (.94 in) the only months recording less than an inch. This year continues the theme with 3.28 inches in the first 20 days.

Rainfall 1998 (inches)



Letter



to the Editor

Dear Editor,

How disappointing for the Friendship Club to have only three people from the village come to enjoy the entertainment which they had organised, especially as their raffle was in aid of the Church Roof Appeal. However, with the proceeds of that raffle and several others, the Club raised £200 for the Appeal. Congratulations, Friendship Club - you have set us all an example.

## FRIENDSHIP CLUB

Early in December we had our Christmas tea in the Village Hall, provided by the Committee & some of the members. Afterwards Mrs Puddle played the piano and we sang carols until the entertainers arrived, which was much enjoyed by everyone. We arranged a raffle which, together with smaller raffles held in the Club, raised a total of £200 for the Church Roof Appeal.

A little nearer Christmas we went to The Sun Inn at Hooky for our Christmas Lunch where we had a lovely meal & quite a lot of fun.

Unfortunately, due to illness, we have had to cancel the arrangements which were made for January; we are hoping to organise something for 2nd February but members will be notified.

B. H.

S S S

## \* \* SIBFORD L. E. O. CLUB NEWS \* \*

*(Ladies Evening Out Club)*

Since the prospective date for our next meeting, 16 February, falls on Shrove Tuesday, it was decided to forego our normal gathering, as several members will be attending that evening's A.P.C. meeting and Pancake Party.

For the next meeting, at 8pm on Tuesday, 16 March, we will gather at Miriam Henbrey's home in the Ferris. After a showing of Miriam's video of the palaces of St Petersburg, we hope to plan out our programme for the next few months, so please come along with some suggestions.

M. H.

☺ ☺ ☺

**S.WEBBER**  
**BUILDING AND JOINERY**  
*EST. 1976*

WINDOWS/DOORS  
EXTENSIONS  
KITCHENS  
LOFT CONVERSIONS  
MAINTENANCE  
AND MORE

TEL: 01295788112  
MOBILE: 0467771380

MEADOWCROFT  
SECRETARIAL SERVICES  
Tel. 01295 780741+ *Ansafone*  
(Evenings/Weekends)  
Tel. 01295 788106 + *Ansafone*)  
Letters, Manuscripts,  
C.V's, etc.  
LASER PRINTER  
*Photocopying/ Fax*  
**VERY COMPETITIVE RATES**

Collection/Delivery  
Service if required.



# “Our Dog Never Chases Sheep”

Adrian Lamb

Our usual timely reminder to all dog owners about keeping their dogs under control when near livestock unfortunately takes on a more serious tone this year. We have recently had two sheep chased and attacked by a dog. The quick action of a neighbour in frightening the dog off and contacting us meant that we managed to save the sheep, one of which had been chased into the boggy area next to a pond and had to be lifted out of the mud. The wound in her neck then had to be stitched back together. Had we not been alerted to the problem we would have certainly found a dead sheep stuck in the mud next morning.

The dog in question is a perfectly normal family pet, so all those people who, when asked to put their dogs on leads, tell us ‘our dog never chases sheep’ take note. As with all dogs of any size you can never trust them totally. I don’t think it is unreasonable to ask once again that all dogs should be permanently on a lead when ever you are crossing grazing land, whether you can see the livestock or not, or near farm buildings where hens and ducks may be roaming.

SIBFORD POST OFFICE and STORES

is now a

NATIONAL LOTTERY POST OFFICE  
WITH FULL SERVICE & MAIL  
COLLECTION

Going Abroad?

We Sell AMERICAN EXPRESS Travellers  
cheques & Foreign Currency

Stores Opening Hours;

Mon to Fri: 8.30am-1pm & 2pm-6pm

Sat 8am-1pm & 2pm-6pm; Sun: 10am-1pm

VIDEO HIRE - CURRENT RELEASES

DRY CLEANING SERVICE

COUNTER SALES of PAPERS & MAGAZINES

Groceries, Greengrocery, Stationery,

Confectionery, Cigarettes,

Wines & Spirits

\* FREE DELIVERY SERVICE \*

Tei 01295 788317

Proprietors: Colin & Helen Henderson



## Méli-Mélo Cuisine

*Elegant & Imaginative Food for  
Private and Corporate Occasions*

*French & English Country Cuisine*

*Business Functions, Dinner Parties,  
Hot & Cold Buffets, Canapés,  
Anniversaries & Christenings*

*Telephone Victoria on  
(01295) 730338*

## W. I. NEWS & INFORMATION

Our January meeting commenced on a note of sadness at the passing of Phyllis Feltham, of whom we have many happy and amusing memories.

On a very cold afternoon it seemed appropriate that the speaker's subject should be "Underwear" ! We listened with mixed feelings of admiration and incredulity as Sheila Walsh expounded upon the development of underwear through the ages - particularly admiring her many drawings, from pockets to pantaloons, and appreciating the amount of research which had gone into the preparation for her talk. She was profusely thanked by Kay Winter.

Two representatives from Spencer's Corsetry displayed a selection of modern underwear which contrasted drastically from those submitted for the competition for "An historical undergarment" - dating from an age when copper fires were lit, whites were boiled and blued, and irons were heated by the fire - the good old days ?!

Mrs Baggeley and Mrs Jarvis treated us to a warming cuppa and delicious cakes, and we departed with a reminder of our next meeting :-

**Tuesday 9 February - 'Through the Panama Canal'**

**Competition - A decorated container.**

M. C.

S S S

**Do You Have 'WIZARD of OZ' on Video?**

Perhaps you recorded it over Christmas. I did - but without the sound-track! If you have a copy, may I borrow it for a short time? Please call if you can help me out of a sticky corner.  
*Elaine Booth (780287)*

TRADITIONAL CHINESE ACUPUNCTURE

GODSWELL NATURAL THERAPY CENTRE

Bloxham, Banbury, Oxon

For Further Information Call:

SARAH BROWN M. B. Ac. C.

*Member of the British Acupuncture Council*

Phone: 01865 - 842142

K.G.PREEDY & SON  
GENERAL BUILDERS

For All your building work

\*

SPECIALISTS in STONE WALLS Etc

\*

Braggingtons Lane, Middleton Cheney

Tel: 01295 - 710977

\*Sibford References Available\*



## TEMPORARY KITCHEN CLOSURE at BISHOP BLAIZE

The kitchen at the Bishop Blaize will be closed at 2pm on Sunday 31 January for refurbishment and will re-open at noon on Saturday 6 February. We apologize for any inconvenience to our customers.

Please note that the Bar will be open for normal service during that week.

Sam, Sheila & Zebby.



## WELCOME to SIBFORD - ALL NEWCOMERS

If you are a *NEW RESIDENT* of Sibford and have not yet received a copy of the 'Welcome to Sibford' leaflet, please telephone **Maureen Warden** on Swa. 788252 (Gower or Burdrop) or **Mary Mills** on Swa. 780248 (Ferris) and a copy will be delivered to you. The information will help to make you feel at home - by acquainting you with the services, schools, churches, clubs and societies that are currently active in the villages.

This month we say '*Welcome*' to **Alan & Diana Turner**, who moved into The Colony before Christmas. They work in London, Alan as an accountant with Price Waterhouse Coopers and Diana as an editorial director for children's magazines & books.

He is a keen gardener and Diana paints watercolours & is interested in the arts generally. They both wish to become involved in village life, when time allows.



## BISHOP BLAIZE INN 17TH CENTURY FREEHOUSE

BURDROP, SIBFORD GOWER (01295 780323)

Well-kept range of Traditional Beers and Guest Ales

Monday Night Take-aw. Fish & Chip  
Friday lunch 11am - 3.30pm

BAR FOOD SERVED

Mon to Sun 12noon - 2pm  
Mon To Sun 7pm - 9.30pm

Traditional Sunday Lunch

Patio & Large Garden with Superb Views!

Sam, Sheila and Zebby Welcome You

## HAIR & BEAUTY SERVICES

Professionally Trained  
Hair & Beauty Specialist

I cover all aspects of hairdressing for men, women and children and will offer a personal service and professional touch from the comfort of your own home.

To arrange an appointment or to receive my competitive price list

Please call Barbara on 01295 780261

## THANK YOU, MURIEL

A very big 'THANK YOU' to Muriel Chandler, and the Village Hall Committee, for the continuing endeavours to raise funds for the Village Hall finances and at the same time providing pleasure to various sections of our village populace.

The Sunday Car Boot sales attract a good attendance each month and a committee is already planning for this year's June Annual Fayre.

But above all, 'Thank You' for bringing us the Oxford Theatre Company's original & very lively performance of 'Don Quixote' on 1 December. A most enjoyable & memorable evening of pure entertainment. [*I am glad the razor wasn't as sharp as the dialogue!*]

May you have continued success with your future theatrical ventures in the Village Hall, such as 'Thurtinkle' (for children) on 17 February and 'Tripping the Light Fantastic' (for adults & young people) on 11 March.

RH





The Old Town Workshop  
Saint George's Close  
Moreton-in-Marsh  
Gloucestershire  
GL56 0LP

Tel/Fax: 01608 650026  
Mobile: 0860 225 608

ALAN HESSEL  
ANTIQUE RESTORATION



SPECIALIST CONSERVATION OF FINE PERIOD FURNITURE

## RED HORSE FUELS

*(R.C. Hoggins)*

Windmill Farm, Oxhill, Warwickshire

Telephone: 01926 642832

Solid Fuels and Logs  
Bottled Gas and Paraffin  
Peat, Compost, Growbags, Soil,  
Sand, Gravel, Cement

Ring for Delivery or collect from our  
new yard on the A422

## CHIROPODIST

Mrs Margaret Nelson

DPodM MChS SRN

State Registered Chiropodist



Home Visits and Surgery  
Ashcroft Clinic

Tel: Deddington 01869 338854



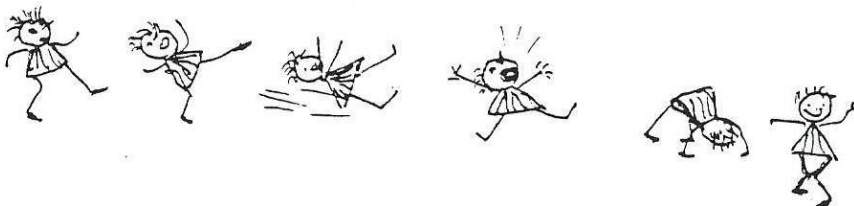
flowers for all occasions

*Petals*

43a Market Place, Banbury, Oxon. OX16 8NW  
(Next to Laura Ashley)

Telephone: (01295) 255450





## LETTER FROM SIBFORD VILLAGE HALL COMMITTEE

On Wednesday, 17th February, at 3.00 p.m. (school half-term holiday) in the Village Hall there is a production by the new Animation Theatre Company entitled Thurtinkes Telling Tales. Thurtinkle is a much-loved storyteller from the Land of Big Noses, who lives in a very tiny house. Come and listen to his wonderful stories when he opens his magic box. A highly visual performance with puppets and music for 4 years of age and upwards (a 45 minute performance) with tickets at only £1 each, which can be obtained from Sibford Ferris village shop or by phoning 780025.

In March the Oxfordshire Touring Theatre Company (in a co-production with the New Perspectives Theatre Company) return to entertain us with "Tripping the Light Fantastic", a new play for adults & young people that will put a spring in your step and a beat in your heart! This will be on Thursday, 11th March, at 7.30 p.m., in the Village Hall, with tickets at £3.50/£1.75, already obtainable by phoning 780025. Both these productions are held in conjunction with Cherwell District Council.

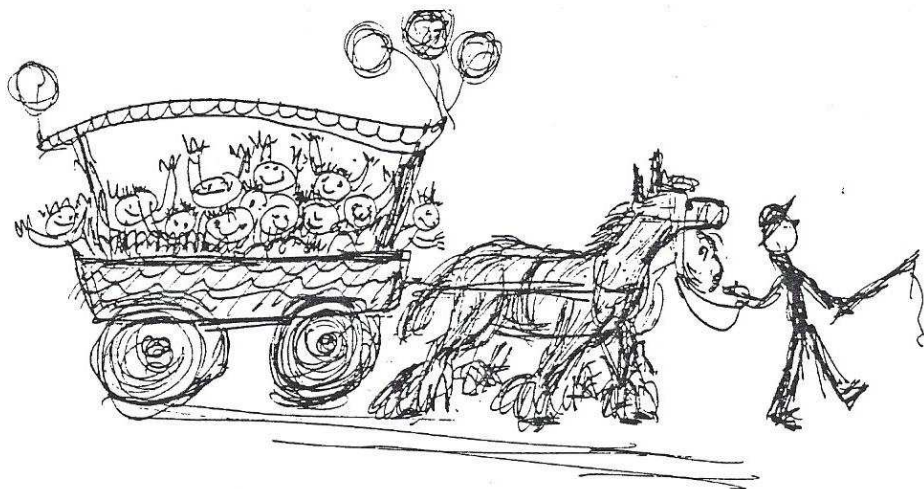
The 22nd November car boot sale raised £86, the December sale £146 (boosted by donations kindly given by our Booking Secretary) and the January sale £54 (affected by illness of some of our regular sellers but still having over 100 through the door) for Village Hall funds. The next sale is on Sunday 7th February from 12.30 to 3.30 p.m. with refreshments available and to book a table please ring 01295 251339.

Sadly Rebecca and Richard from Hook Norton have had to leave their posts as Village Hall cleaner and caretaker but we are pleased to report these positions have been taken over by Caroline and Stewart Balloch, who live a little nearer the Hall.

The notice board has been re-erected and we hope a cover can be fixed to this as soon as possible.

Hopefully to improve the Hall's heating, we are obtaining quotations from heating engineers to replace the Hall boiler and will be making a grant application to Cherwell Council to possibly assist in paying for a new system.

The meetings have already begun, to organise an even bigger and better Annual Fayre on Saturday, 26th June, 1999, starting at 1.00 p.m. Anyone who would like to attend these informal meetings and help with the Fayre, either before or on the day, would be very welcome. They are on the third Wednesday of every month at 8.00 p.m. in the Bishop Blaize Inn. If you can't attend any of the meetings, do please let us have any ideas you may have to improve the Fayre by ringing either Ginnie on 780373 or Muriel on 780025.



**\* GRANNY HELPS TO RAISE THE ROOF \***  
*by Sheila Walsh*

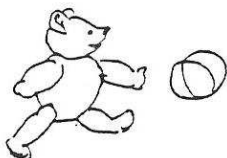
First I would like to thank our Editor for his kind words, in the last *Sibford Scene*, and for the opportunity he has given me to do these drawings. It is a small return for all the great kindness I have received in my two years in Sibford. I enjoy drawing and have done this sort of thing for over 75 years.

Which reminds me - there is a  
**'BRING & SHARE' 90th BIRTHDAY LUNCH**  
 on **SUNDAY 27th JUNE** at 1pm in the **VILLAGE HALL**.

You come with a plate of food for the communal table; I provide the liquid refreshments - glass of wine, beer, soft drinks, tea & coffee.

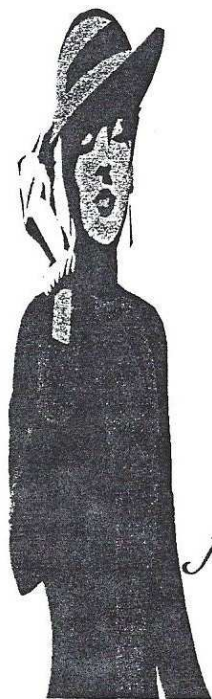
**TWO WONDERFUL SHIRE HORSES, PERCY & ARTHUR**, will come at 2.30pm and give free rides for all children. (Adults must put a donation in the Collection Box.)

**\* NO PRESENTS - just a DONATION for the CHURCH ROOF FUND \***  
 Make a note in your diary now - and please, **DO COME!**



Join Us For  
An Afternoon of Fashion & Music  
including luxury afternoon tea

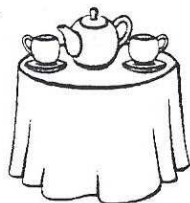
In the Hall at  
Sibford Friends School  
Sibford Ferris



on  
Sunday 28th February  
between 4 - 6pm  
Enjoy an afternoon of  
nostalgia as we whisk  
you back to the  
fascinating decades of fashion  
from the 1920s to  
the swinging '50s



Admission by Ticket Only : £6.50  
Available from Sibford Ferris Shop, Sibford  
Surgery & Sibford  
Friends School



IN AID OF THE SIBFORD MILLENNIUM PAGEANT

# The Sibfords Society

At our meeting in November Joyce Hoad told us about her detailed research into her family history, which she has traced back to the Enoch family who lived in Barford St. Michael and subsequently moved to Swalcliffe in the 16th Century.

She gave us a fascinating insight into life and politics of those years, which has been gathered over the years from archive material.

At one time the family were the third largest landowners in the parish but gradually over the next 200 years the family fortunes went down and the land was sold.

S S S

## SCULPTURE SMASHED

Some time during the night of 18 December, a valuable sculpture was vandalised in the grounds of the Friends School. The life-size stone carving of a reclining figure was toppled from its plinth at the junction of Back Lane & Holly House Drive. The head was taken and the pieces strewn across the drive. The Police were informed at once. If anyone can help to avoid such a pointless & distressing act in the future, I would be pleased to hear from them.

I find it worrying & upsetting that such acts of wanton vandalism are on the increase, but particularly in a quiet rural community such as ours.

*Michael Spring (781270)*

## The Firs Garage



a world apart from the rest  
**BOOK NORTON OXON**  
(1 MILE NORTH OF VILLAGE)  
(01608 737349/01608 737641)



**SALES OPEN:** Mon - Fri 8am - 6pm, Sat 8am - 5pm, Sun CLOSED  
(Out of hours please phone for an appointment)  
**PARTS OPEN:** Mon - Fri 8am - 5.30pm, Sat 8.30am - 12.30pm

### WE OFFER YOU

- \*Sales (New and Used)
- \*3 year unlimited mileage warranty (New)
- \*Optional 12 months warranty
- \*Part Exchange
- \*0% Runa demos
- \*Service
- \*MOTs
- \*Parts
- \*Body work
- \*Insurance estimates
- \*Attended services (Fuel)
- \*Car Wash
- \*Friendly service and lots more!

ESTABLISHED 1960

IT PAYS TO DEAL WITH A FAMILY BUSINESS

*The Firs Garage would like to thank the local community for their loyal support, it is very much appreciated.*

## Bed & Breakfast

### AGDON FARM

### Nr Brailes

Comfortable rooms

in old stone farmhouse

Tel: Maggie Cripps

01608 685226

## DONATIONS to SIBFORD SCENE FUNDS - 1998 & 1999

Following our publication in December of details of the 10 local organisations who had kindly donated a total of £180 to *Sibford Scene* funds, the year was pleasantly rounded off by the receipt of two final, and greatly appreciated, cheques for 1998 - from Sibford Ferris PC and The Sibfords Society.

Even as I write, our treasurer's junior assistant, young Robert Scratchit, is down at the Gower pond, trying to persuade one of Glennis's ducks to part with just one of its wing feathers, so that he can prepare a brand-new quill pen to inscribe the heading for the 1999 page of our leather-bound *Book of Donations*.

Which illustrious local group will hasten to ensure having its name at the top of this year's page, in Master Robert's best joined-up writing?  
*The Editor*

£ £ £

## HOOK NORTON COMMUNITY EDUCATION CENTRE

Saturday Workshops - 6 February

- Subjects include: Emergency First Aid, Glass Painting, Shiatsu, Chocolates & Cookies for Kids, Calligraphy, Painting Flowers, Line Dancing, Cookery Demonstration (dinner party in 4 simple steps), Shakespearean Study Day - Anthony & Cleopatra (on at Stratford this Summer).
- For information contact 01608-730052.

£ £ £

### THE VILLAGE SHOP - HOOK NORTON

\* NATIONAL LOTTERY \*

Grocery - Greengrocery - Bakery  
Wines - Spirits - Confectionery  
Newspapers - Magazines - Cards  
Flowers - Plants and Accessories  
Video Rental - Bottled Gas  
Open Monday to Friday 7am to

9pm

Saturday 7am to 8pm

Sunday 8am to 6pm

Telephone: 01608 737245

## DAVID MALONE

HIGH CLASS PAINTER AND DECORATOR

4 Acre Ditch  
Sibford Gower  
Banbury  
Oxfordshire OX15 5RW  
Tel: (01295) 780546



CITB REGISTERED

*Broken Colour Effects and Paperhanging a Speciality*

Making a will today could be one of  
the wisest decisions you'll ever make.



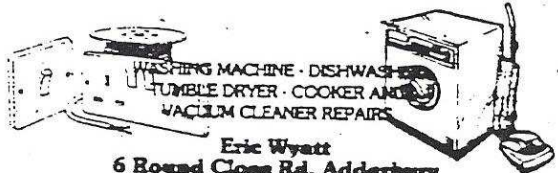
**BROADLEAF**  
Will Writers Ltd  
THE WISE COURSE OF ACTION

For further enquiries about  
our at home willwriting service  
and special offer rate telephone  
**01295 788288** to arrange an  
appointment.



**Triple M**  
**Services**  
Quality Repairs TO  
All Makes Of Car And  
Light Commercial  
Vehicles  
MOT Prep  
Welding  
Call Mr. Harris  
on  
Swadcliffe 7806114

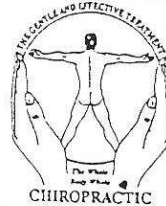
**ADDERBURY  
DOMESTIC APPLIANCES**



WASHING MACHINE · DISHWASHER  
TUMBLE DRYER · COOKER AND  
VACUUM CLEANER REPAIRS  
Eric Wyatt  
6 Round Close Rd, Adderbury  
Tel. No. (0295) 810116

**-Ann Woolgrove-**  
**Fabrics & Soft Furnishings**  
- choose from hundreds of fabrics for  
Professionally made curtains, pelmets  
and blinds. Loose covers, cushions  
and re-upholstery.  
Bedspreads and headboards.  
Wallpapers and decorating service.  
Please phone for details  
-01295 788145-

MCTIMONEY-CORLEY



CHIROPRACTIC

**John  
Mulley**

CHIROPRACTOR

DC MBAAC

THE OLD POST OFFICE,  
SIBFORD GOWER, BANBURY,  
OXON. OX15 5RT.

Tel. (01295) 780629



## WHEATHILLS FARM

In the last issue of the Scene it was reported that an offer had been made by the Town Estate Charity. In fact a number of conflicting offers had been made and the agents therefore issued a second and different invitation which called for a swift response.

Because of the very strong desire in the villages to obtain control of the top field in particular, as expressed by the magnificent response to the pledge appeal, the chairmen of the two Parish Councils and the Charity agreed to make a second offer improved to the limit of the estimated funds available from the appeal and the Charity. This offer was accepted and the sale has now been completed, and the Charity now owns on behalf of the villages and itself the field between the Primary School and the churchyard.

The appeal fund is still open to receive donations as well as to assist the arrangement of Gift Aid tax relief certificates on donations already made. The final results will be reported in a later issue of the Scene.

PHB

## ACUPUNCTURE

Acupuncture is a gentle and effective treatment for a wide variety of common complaints, including back and joint pain; sinus problems; digestive disorders; depression; PMS; high blood pressure; asthma and skin complaints. Contact me to discuss how acupuncture and traditional chinese medicine could help you.

Hugo Seely, Lic. Ac. M.B.A.C

Licensed Acupuncturist

Holly Mount, Main Street, Sibford Gower, Oxon OX15 5RT

T: 01295 780355

Member of the British Acupuncture Council

## RUSS MEDICAL MASSEUSE

STRESS AND TENSION EASED AWAY  
MUSCULAR AND SKELETAL PAIN RELIEVED



Founded 1919

Elizabeth Webber - MAR.LCSP (Assoc)  
Godswell Natural Therapy Centre  
Godswell Lodge, Bloxham, Banbury.  
Telephone 01295 788101

FRANCIS MORDAUNT  
MSSCh, MBChA

VISITING CHIROPODIST

To enquire about a Home Visit,  
please telephone;  
01295 730615

Professional Foot Care  
In Your Own Home

*the wykham arms*

Sibford Gower 01295 - 780351

A Seventeenth-Century Thatched  
FREE HOUSE

Selection of Real Ales  
HOME COOKED FOOD

\* Wooded Beer Garden \*

Ample Seating in Bar & Restaurant  
Booking Advisable at Weekends

Children Welcomed

Give your child

**CONFIDENCE  
& SUCCESS**  
with Kumon Maths

- Individualised programme
- For all ages and abilities
- 40 years proven experience
- Improves study skills

Mary Perkins  
01295 780469



**KUMON  
MATHS**

# Oddjob

CARPENTRY

PLUMBING

ELECTRICS

HOUSEHOLD REPAIRS

SECURITY

HEATING INSTALLATION

KITCHEN FITTING

FOR A COMPREHENSIVE AND RELIABLE  
LOCAL SERVICE

HUGO SEELY 01295 780355

FREE NO-OBLIGATION ESTIMATES

No job too large or too small

Excellent local references available

## MONTHLY COLLECTORS & CAR BOOT SALES SUNDAYS in SIBFORD VILLAGE HALL

The next sales will be on Sunday 7 February & 7 March, from 12.30 to 3.30pm. Refreshments available. Phone 251339 to book a table.



# Collection

## Thank you

# Scouts Newspaper

Last year the Scouts collected from the Sibfords and Epwell, newspaper, equivalent in weight to almost 4 African elephants! This weight was in turn converted to pounds by Cherwell District Council boosting the Groups funds. The money is used to buy equipment and to support the activities of the Beavers, Cubs and Scouts. This is a tremendous effort and we would like to thank all those who leave their newspapers for doorstep collection or who take them directly to the skip at the village hall. Arrangements for the paper collection underwent change last year from once a month to once every two months. This hasn't always operated smoothly and our apologies for the problems, particularly the postponement in the January collection. We can only collect if a skip is provided for us and as we have seen this can be subject to change, sometimes at short notice.

Assuming the service continues to be funded by Cherwell, your newspapers should be collected by the afternoon on the first Saturday of every other month; March, May, July etc. If it hasn't, then revised arrangements should have been (or will be!) posted at locations around the village. You are of course welcome to take your paper directly to the skip, which will be at the village hall throughout the relevant weekend. We appreciate your help and please bear with us.

Help the planet!  
Help the Scouts!

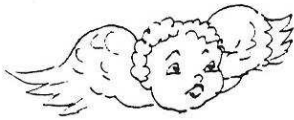


Recycle your newspapers and  
magazines.

Thank you.

Martin Layer (788139)  
Chairman 1<sup>st</sup> Sibford Scouts  
Group Executive Committee.

Next Collection 6<sup>th</sup> March



## HOLY TRINITY CHURCH NEWS



Although things seem to have been quiet since Christmas, apart from a well attended Epiphany Service at Sibford on 12th night, 6th January, there are many forthcoming events as Lent begins in February, rather earlier than normal.

Our usual **PANCAKE PARTY** will take place in the Village Hall at 7.30 pm on Shrove Tuesday **16th February 1999**. During the course of the party, the Annual Parochial Church Meeting will be held soon after 8 pm. The PCC report will be circulated to all the many villagers who are involved with the church and this will contain detailed reports on all activities throughout the year and plans for the future as well as formal matters for consideration at the meeting.

On **ASH WEDNESDAY** 17th February there will be a Eucharist service at Shutford at 8 pm.

During Lent there will be short Eucharist services at 7.30 am on Fridays in Sibford Church, apart from Good Friday.

**LENT AUSTERITY LUNCHEAS** will be held throughout the Benefice on Mondays during Lent starting at 12.30 pm. These will be as follows:

22nd February	at St Mary's House, Broughton
1st March	with Barbara Taylor at Swalcliffe Grange Farm.
8th March	with Colin & Tina Frith, Barn Close, Burdrop
15th March	with Richard & Jane Asser, Tadmarton Manor
22nd March	with Charles & Alison Pollard, Epwell
29th March	at Shutford Village Hall

Advance Notice: on 31st March Canon Derek Palmer will show in Sibford Village Hall, slides of his recent visit to the Holy Land.

on 2nd April at 7.30 pm the combined Sibford and Broughton choirs will sing "From Olivet to Calvary" by Maunder in Broughton Church. If there is any one who would like to join the choir for this event, practices will be on Friday nights at the Red House, Burdrop or as advised; please contact the Rector (780555) or Mary Nash (780275).

## CHURCH SERVICES

Society of Friends	Sunday at 10.30 am
Methodist	Sunday at 11.00 am
Roman Catholic Mass (Wroxton)	Sunday at 9.00 am
(Brailes)	Sunday at 11.30 am
Baptist (Hook Norton)	Sunday at 10.30 am

### Church of England, Holy Trinity, Sibford Gower

2 Feb	8.00pm	Candlemass Eucharist at Epwell
7 "	10.00am	'Young at Heart' Eucharist at Tadmarton
14 "	9.30am	Family Service
17 "	7.30am	ASH WEDNESDAY Communion
	8.00pm	Benefice Eucharist at Shutford
19 "	7.30am	Holy Communion
21 "	9.30am	Holy Communion
26 "	7.30am	Holy Communion
28 "	9.30am	Holy Communion
5 Mar	7.30am	Holy Communion
7 "	10.00am	Benefice Eucharist at Broughton
14 "	9.30am	Mothering Sunday Family Service
21 "	9.30am	Holy Communion
28 "	10.00am	Palm Sunday Service at Epwell

† † †

### LENT STUDY GROUP

Wednesday Evenings - 24 Feb, 3 Mar, etc., 7.30pm at Rectory,  
'Colossians for Today' - ALL WELCOME.

Other events are listed in the Wykeham News.

† † †

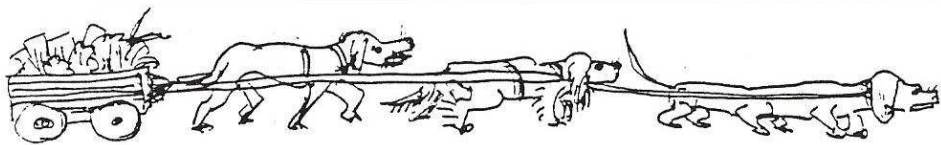
### WYKEHAM BENEFICE QUIZ

The six Churches of the Wykeham Benefice will be competing on Wednesday 10 February at 7.30pm in the Primary School in Sibford. In a light-hearted Quiz we shall see which of the six villages comes out tops. £1 entry per person (in teams of 4 or 5) and a raffle should raise some funds for the Church Roof Fund - which still needs further support. T. W.

† † †

### SIBFORD METHODIST CHAPEL

We would like to thank everyone who supported our Christmas coffee morning. We raised the wonderful amount of £289 which will go towards our funds. Thank You, one and all. B. H.



## SIBFORD BUS SERVICES

### 1. FREE BUS SERVICE

Sponsored by the Town Estate Charity

			Depart	Return
Friday	5 & 19 Feb	to Banbury	10.00am	12.00noon
Wednesday	10 & 24 Feb	to Chippy	10.00am	12.00noon
Friday	5 & 19 Mar	to Banbury	10.00am	12.00noon
Wednesday	10 & 24 Mar	to Chippy	10.00am	12.00noon

The pick-up points are:

<u>Banbury Bus</u>	<u>Chippy Bus</u>
Village Hall	Village Hall
Crossroads	High Meadow
High Meadow	Crossroads
	The Colony

### 2. MIDLAND RED. 480

Mon - Sat (M-S).

### Shipston - Sibford - Banbury

Not Sat (NS).

Sat only (SO).

	M-S	NS	SO	M-S	NS
Shipston	-	-	9.20am	-	-
Sibford Gower Crossroads	7.30am	9.00am	9.45	11.45am	12.45pm
Sibford Ferris School	7.32	9.02	9.48	(11.38)	(12.38)
Banbury Bus Station	8.00am	9.30am	10.15am	12.15pm	1.15pm
	M-S	SO	NS	M-S	M-S
Banbury Bus Station	11.15am	12.15pm	12.15pm	2.15pm	6.00pm
Sibford Ferris School	11.38	12.47	12.38	2.38	6.23
Sibford Gower Crossroads	11.40am	12.50pm	12.40pm	2.40pm	6.25pm
Shipston	-	1.15pm	-	-	-

### 3. CHERWELL VILLAGER. 55

### Sibford - Banbury

Wednesday only	Outward	Return (read up)
Sibford Gower	9.55am	1.55pm
Sibford Ferris	9.57	1.53
Hooky	10.05	1.45
Bloxham	10.35	1.15
Banbury	10.50am	1.00pm

### 4. CHERWELL RURAL DIAL-A-RIDE SCHEME - A mini-bus with tail-lift to take ELDERLY OR DISABLED PEOPLE, and escort, to Banbury (max fare £1.20).

Door-to-door service. Book at least one day in advance.

Operates on WEDNESDAYS ONLY.

\*\*\* Phone 263777 for more details or to book. \*\*\*

THE DEADLINE for CONTRIBUTIONS  
for the MARCH issue of *Sibford Scene Extra*  
will be

\* TUESDAY 16 FEBRUARY \*

Contributions to Treasurer, Shop or any Lamb



THE DEADLINE for CONTRIBUTIONS  
for the APR/MAY issue of *SIBFORD SCENE*  
will be

\* TUESDAY 16 MARCH \*

Contributions to Editor, Treasurer or Shop



## FORTHCOMING EVENTS

**DIARIST - David Morgan (780232)**

*The Stags Head, Swalcliffe*

1999

* Apr 2 Fri	Sibford & Broughton Choirs	Broughton Church	780555
* June 26 Sat	Sibford Annual Fayre, 1.00pm	Sibford Village Hall	780025
* June 27 Sun	Sheila's 90th Birthday 'Roof Raiser'	Sibford Village Hall	
July 10 Sat	Birmingham Symphonic Winds Concert (MM)	Sibford School	

2000

June 22-24 SIBFORD MILLENNIUM PAGEANT (MM) SIBFORDS

\* = NEW or CHANGED ENTRY.

## WEEKLY EVENTS

Guides	Hook Norton	Monday	evening
Indoor Bowls	Village Hall	Monday	2.00 - 4.00pm
Brownies	Village Hall	Tuesday	5.15 - 6.45pm
Tots'N'Babes(780036)	Friends Meeting Hse	Wednesday	10.30 - 12noon
Fielding Day Centre	Friends School	Wednesday	12.45 - 4.45pm
Badminton	Friends School	Wednesday	7.30 - 9.30pm
Piccolos (term time)	Village Hall	Thursday	9.30am
Ladies Keep Fit	Village Hall	Thursday	8.00pm
Beavers	Village Hall	Friday	4.30 - 5.45pm
Cub Scouts	Village Hall	Friday	6.00pm
Scouts	Village Hall	Friday	following Cubs
Playgroup	Village Hall	Mon, Wed, Thur, Fri	9.00am - 12noon

## LOCAL CORRESPONDENT for BANBURY GUARDIAN

Muriel Chandler (Telephone & Fax 780025)

2 Pound Lane, Sibford Gower.

Copy for Guardian by MONDAY please.

LOCAL CHERWELL DISTRICT COUNCILLOR - David Green (Tel 780444)

## CALENDAR for FEBRUARY 1999

- Tuesday 2nd Friendship Club meeting - see p 6  
Wednesday 3rd Mobile Library in Sibfords & Burdrop (2.25 - 4.20pm)  
Wednesday 3rd Sibford School Sixth Form Open Evening, 6pm - see p 2  
Saturday 6th Hooky Community Education Workshop - see p15  
Sunday 7th Collectors & Car Boot Sale - Village Hall - see p19  
Tuesday 9th W.I. Meeting - see p 8  
Wednesday 10th Wykeham Benefice Quiz, Sibford Primary School, see p21  
Wednesday 10th Sibford Village Hall Committee Meeting, 8pm in Hall  
Tuesday 16th Annual Church Meeting & Pancake Party, Vill Hall - see p20  
TUESDAY 16th \* DEADLINE for MARCH issue of *SCENE EXTRA* - see p23 \*  
WEDNESDAY 17th THEATRE AFTERNOON, 'THURTKLE', VILLAGE HALL, see pp 3&11  
Wednesday 17th Mobile Library in Sibfords & Burdrop (2.25 - 4.20pm)  
Wednesday 17th Monthly meeting to organise Annual Fayre, Blaize, see p11  
Saturday 20th Skip in the Gower - Pound Lane  
Monday 22nd Lent Austerity Lunch - see p20  
Sunday 28th Fashion Afternoon MM, Friends School - see p13

## CALENDAR for MARCH 1999

- Monday 1st Sibford School Open Morning, 10am - see p 2  
Monday 1st Lent Austerity Lunches - EVERY MONDAY in MARCH - see p20  
Wednesday 3rd Mobile Library in Sibfords & Burdrop (2.25 - 4.20pm)  
Saturday 6th Scouts Paper Collection - see p19  
Sunday 7th Collectors & Car Boot Sale - Village Hall - see p19  
Thursday 11th THEATRE EVENING, Village Hall, see pp 3 & 11  
Tuesday 16th LEO Club Meeting - 8pm - see p 6  
TUESDAY 16th \* DEADLINE for APR/MAY issue of *SCENE* - see p23 \*  
Wednesday 17th Mobile Library in Sibfords & Burdrop (2.25 - 4.20pm)  
Wednesday 17th Monthly meeting to organise Annual Fayre, Blaize, see p11  
Saturday 20th Recycling Units in the Gower - Acre Ditch  
Saturday 20th Skip in the Gower - Barley Close  
Wednesday 31st Mobile Library in Sibfords & Burdrop (2.25 - 4.20pm)  
Wednesday 31st Slides of visit to Holy Land, Village Hall, see p20

### \* SIBFORD SCENE \*

Editor: Ray Henbrey, Virginia Cottage, H'k Norton Rd, Sibford Ferris (788265)  
Treasurer: Timothy Wimbush, The Rectory, Acre Ditch, Sibford Gower (780555)  
Advertising Manager: Ivor Hopkyns, Elmridge Farmhouse, Sibford Gower (788367)  
*Scene Extra* Editor: Adrian Lamb, Grounds Farm, Sibford Ferris (780380)  
Personal Adverts: up to 4 lines £1.00, 8 lines £2.00 - contact Editor.  
Commercial Adverts: small £15.00 p.a. - consult Ivor for future space.  
Loose Leaf Insertions: £10 for distribution - ask Editor for details.