

NO. 184
MARCH 1995

P.T.A. JUMBLE SALE
Wednesday 8 March 2.00pm
In the Primary School Hall
ALL WELCOME

* S *

HOLY TRINITY CHURCH - JUMBLE SALE
VILLAGE HALL Saturday 1 April 2.00pm

Please let us have your unwanted items, big or small -
Clothes, jewellery, handbags, crockery/glassware/utensils,
toys, books, etc. Also cakes/jams, etc.

Dr Heath (780424), Erica Wimbush (780555), or Jane Holliday
(780500) will collect - or leave items at Sibford Surgery.

* Come early on the 1st for the best bargains *

* S *

* JAM POTS WANTED *

I should be grateful for any size or type of glass pots,
with or without screw-on tops, that readers have to spare.
(To be used for home-made marmalade & jam for sale in aid of
Red Cross.) I will gladly pick them up, or they may be left
at The Forge, Sibford Ferris. Anne Stephens (780452)

* S *

VACUUM CLEANER WANTED

Does anyone have an old vacuum cleaner
(in working order) for a very worthy cause?
Please ring Jane Holliday - 780500.

SIBFORD GOWER PARISH COUNCIL

The Council has met Mr Colin Garritt from the Engineers Dept. and Cllr David Turner at The Colony to discuss the bad state of New Barn Farm Road. This stretch of road has become extremely narrow and is prone to flooding during heavy rains. Lack of money means no major works can be done but maybe it can be improved by clearing the ditches opposite the entrance to Gautherns Barn and clearing the debris off the road at the bottom of the drive of New Barn Farm. A 'Not Suitable For HGVS' sign might also help to relieve the problem.

The Council wishes to thank everyone who came and helped to make the centenary celebrations such a memorable occasion. The next celebration, of course, will be the 50th Anniversary of VE Day and VJ Day and the Clerk has received a letter from CDC asking the Council if they wish to commemorate these events. The Clerk would like to hear from anyone interested in setting up or joining a committee to help organise any event, i.e. streetparties, wartime supper etc. A grant of £500 can be made available.

As you probably have noticed we now have a Mobile Recycling unit in the village on a bi-monthly basis. The next visit is March 25th. The precept has been set at £500. Our next Parish Council meeting is on March 24th at 8 o'clock and the Annual Parish Meeting is on Friday 12th May at 7.30 in the Primary School Hall. Everyone is welcome.

Petra Berry, Clerk to Sibford Gower Parish Council (Tel 780462)

FREE ESTIMATES

TELEPHONE: **0295 780629**



CONSERVATORIES
EXTENSIONS
MAINTENANCE
REPAIRS

JOHN MULLEY BUILDS

KITCHENS
BATHROOMS
CUPBOARDS
FIREPLACES



PAVING WALLING ROCKERIES

ALL INDIVIDUALLY DESIGNED
20 YEARS LOCAL EXPERIENCE

GREEN ACRES CONFERENCE CENTRE

Your local meeting place situated in Sibford Gower offers:

- * fully equipped Conference Centre for up to 20 people.
- * overnight accommodation with en suite bathrooms.
- * first class catering.
- * transport from and to Banbury Railway Stn.
- * extremely competitive rates for both residential and non-residential courses.

For bookings or to view the facilities please contact: The Conference Manager,

Green Acres, Sibford Gower,
Banbury, Oxon. OX15 5RW

Tel: 0295 788115/8448 Fax: 0295 780366

SIBFORD PLAYGROUP

(Held Mon./Weds./Friday mornings 9-12 for children aged 2-5)

There will be a sponsored Easter-egg Hunt on Friday 7th April, details of which will be advised nearer the time.

If you have a child aged between 2 - 5 and would like to find out more about Playgroup, you are welcome to visit us in the Village Hall between 9am and 12 noon on Mondays, Wednesdays or Fridays, or if you would like to receive a brochure, please contact Sandra Butt on (0295) 780352.

Sibford Playgroup is a Registered Charity (No. 1026753)

SIBFORD GUIDES

There will be a **meeting on Tuesday 14th March** at "Meadowbank", **Burdrop, Sibford Gower, at 6.30 p.m.** to make every effort see if the Guides can be restarted. Everybody will be welcome: potential Guides (aged 10 or over), parents, anyone offering help on a regular or occasional basis, or "just interested". Sibford Brownies are going so well that it is a shame there is nowhere for the girls to continue in Guiding without a long journey out of the neighbourhood. Sibford Guides were thriving until about five years ago, and it would be great if they could get going again.

PLEASE COME!

For further information, please contact Vivien Bouverie (01869-338269), or Vivienne Scouse (01295-788320)

* § *

SIBFORD TABLE TENNIS CLUB

Sibford 'A' is having an excellent season and currently lie in 2nd place in the first division of the Banbury & District Table Tennis League. Jason Tustain is playing exceptionally well and was chosen to play in the Top Twelve tournament.

Sibford 'B' & 'D' are in the last eight of the Handicap competition in which all 44 teams in the League play.

We hope that all our teams will be able to keep their places in the divisions they are in for next season; although Sibford 'C' is in a relegation spot in Division 2 at the moment, it has 2 games in hand.

Ina Lamb - Secretary

WOT?? NO BROWN ENVELOPES??

Perspicacious readers will have noticed that there has been no appeal for funds so far this year, but we hope that this state of affairs will not continue for much longer. Unfortunately, our Stationery Dept is fresh out of the dreaded Brown Envelopes, and new stocks coming from the Philippines (from the Manila Envelope Co.) are stuck on a slow boat from China.

So please be patient and keep your £2 contribution handy for when the Brown Envelopes finally arrive.

In the meantime, we are sincerely grateful to the nine readers who felt they couldn't wait for the official appeal and have recently sent in contributions totalling £72.

* § *

NEW and REVISED ADVERTS in the SCENE

This is the time of year our Advertising Manager earns his title and racks up his expense account - dashing hither & thither and slaving over a hot telephone in order to please our faithful advertisers and to find new ones.

As a result, this edition of the *Scene* contains many new or revised adverts and you are invited to spend a few minutes reading through them - the service you have long been looking for may well be there, within our own yellow & white pages.

More new & revised adverts are in the pipeline, so continue to watch out for them in the next few months.

If you use a service or supplier as a result of seeing an advert in the *Scene*, please let them know - it helps to ensure they continue to advertise in our magazine.

* § *

GOOD NEWS from SIBFORD D.I.Y. STORES plc.

Tuits are hard to find - especially round ones.

A few of these indispensable tools are now available.

* LADIES - BUY ONE NOW - WHILE STOCKS LAST *

Keep it hidden in the kitchen drawer,

ready for the next time your partner snaps:

'Of course I'll do it - when I can get a round tuit.'

LETTER from THE EDITOR

Dear Readers,

First I wish to thank all the 150-odd readers who have let me know, in writing or by phone, that they wish to continue having the *Scene* delivered to their homes - maybe this letter will jog a few more memories into action!

Over 80 replies included favourable comments, many of which praised the efforts of our 30-odd voluntary 'staff' and/or the contributors who provide the information, reports and other items in the *Scene*; several readers singled out 'Nature Notes' or 'Young Scene' for special praise. On behalf of our 'staff' & contributors, I thank all those who took the time to provide such comments.

There were 8 replies containing suggestions concerning the *Scene*. These are appreciated and will be covered in a separate report.

Finally, there were 7 replies proposing that the *Scene* should continue to be delivered to every household. The main reasons given are summarized as follows:

(1) six readers thought it essential that information on village activities, AGM's, APM's, etc, should be provided to all households - as one reader put it 'whether or not they choose to read it'.

(2) two said the financial support given by the Parish Councils or the Town Estates Charity requires us to deliver the *Scene* to all households.

(3) one reader (on behalf of a Sibford organisation) intimated that the reports and financial support provided by that organisation may be withheld if there were a limited distribution; another member of the same organisation felt that other local clubs, societies, etc, may also withdraw their support.

(4) two readers thought there would be a loss of revenue from advertisers.

(5) three, including two *Scene* distributors, foresaw difficulties in carrying out a limited distribution and in maintaining lists of recipients.

I would be pleased to receive further comments, supporting or opposing any of these views or raising other points.

No decision to change the present arrangements will be (or, in fact, can be) made without consultations with our band of voluntary 'staff', who help to keep the wheels turning so smoothly every month.

Thank you for your support of *your* magazine,
Ray Henbrey - Editor.

FRIENDSHIP CLUB

In February we all met and had lunch together at 'The Bishop Blaize', which everyone found to be a very pleasant venue. Thank you to our host for making us so welcome.

Our programme for March is as follows:

Tuesday 7th - Mrs Newman from Chipping Norton will be giving a talk entitled 'Stepping Stones' in the Village Hall at 2.00 pm. There will also be a 'Bring and Buy' stall to help towards Club funds.

Tuesday 21st - We are going on a coach tour and will end up at 'The Wobbly Wheel' at Warmington for lunch. The coach will leave Sibford at 10.00 am. If anyone would like to join us on this coach tour, please contact Mrs Webb (788211).

S S S

SIBFORD FERRIS BUS TOKENS for the 'ELDERLY'.

The item on this topic in the February Scene was compiled in a hurry, just before printing. However, the criteria for receiving tokens are not the same as in other places, as the 'elderly' Editor had assumed. The Ferris PC decided some time ago that bus tokens for pensioners would be provided only to those who do not have private transport available. Anyone requiring details should contact the Parish Clerk, Judith Weeks, on 788393 as soon as possible and preferably before the PC meeting on 7 March. *Sorry, folks.*

* S *

The Bishop Blaize Inn 17th Century Freehouse

Burdrop, Sibford Gower 01295 - 780323

WARM and FRIENDLY
with a
Well-kept Range of Traditional Ales
and Guest Beers

BAR FOOD SERVED:
Tuesday to Sunday 12.00 - 2.00pm
Monday to Sunday 7.00 - 9.30pm

Patio & Large Garden with Superb Views

SIBFORD FERRIS POST OFFICE, STORES
Tele: Swalcliffe (029578) 8317

Stores Opening Hours:

Monday to Friday

8am - 1pm & 2pm - 6pm

Saturday

8am - 1pm & 2pm - 5pm

Sunday

10am - 1pm

Post Office Counter not open in
afternoon on Thursday & Saturday

Groceries, Greengrocery, Stationery,
Confectionery, Cigarettes,
Wines & Spirits.

* FREE DELIVERY SERVICE *

W. I. NEWS & INFORMATION

Business was brief at the February meeting, county notices stressing the need for holders of organ donor cards to join the computerised N.H.S. Organ Donor Register. Ever forward looking, we were notified of County competitions next October and Spring 1996! In the meantime, we look forward to our Group Meeting this Spring with ITV Central News Reader, Wesley Smith, as guest speaker.

In March we may see another sure sign of Spring with the arrival of the orange-tip butterfly - thus prophesied Mr Keningale, a local naturalist who caught his first butterfly in his school cap! His continued interest in these beautiful insects was revealed in the many slides showing their particular habitats, both here and on the continent. Oxfordshire gardeners should keep a lookout for the white admiral on their honeysuckle! Though short-lived (and vegetarian), the whole species proved a very interesting topic, for which Mrs Eildred voiced our thanks.

Mrs Baggaley and Mrs Walpole provided a welcome "cuppa" and home-made biscuits.

"Hearing Dogs for the Deaf" should prove a very interesting subject for our next meeting on **March 14th** - visitors always welcome.

M.C.

S S S

WELCOME to SIBFORD - ALL NEWCOMERS

If you are a new resident of Sibford and have not yet received a copy of the 'Welcome to Sibford' leaflet, please telephone **Barry Davies** on Swa. 780291 (Gower or Burdrop) or **Jane Holliday** on Swa. 780500 (Ferris) and a copy will be delivered to you. The information will help to make you feel at home - by acquainting you with the services, schools, churches, clubs and societies that are currently active in the villages.

This month we say '*Welcome*' to:

- **Roger & Linda Garner**, who have moved into The Manor House, Sibford Gower. They have come from Beaconsfield. Roger is a director for British Gas and Linda is a medical administrator. They have a 19 year old son at university in Birmingham and a 17 year old daughter who is taking her A level exams this summer.

1st The Sibfords

Late last November, a party of Sibford Cub Scouts visited the Benetton Formula One facility near Enstone.

Never before in the history of Sibford Scouts has there been so many kind offers to provide transport for the boys !

So, amid high security we were ushered in - cameras banned. There followed a most enjoyable and informative two hours. We started our guided tour in the drawing office where computers abound. To the composite shop where the autoclaves stand empty awaiting the designers to finish their work. To the metal working shop, 'only the wheel nuts are the same as last season'. The Renault engines are promised for 'sometime in January'. There is an air of expectancy, a feeling that work is about to begin. Dateline Monday 30th January, Treviso, Italy, the Benetton Renault B195 is unveiled to the Worlds press. Quite amazing. Scouting is more than just knots and camping you know.

Many thanks to Erica Wimbush for pulling off this coupe and to our hosts at Benetton, who sent us off with a 'goodie bag' each, containing Benetton merchandise.

On the subject of camping many of you will recall the Scouts begging bottles last September for a bottle stall to raise money for a new mess tent. I am delighted to say that the stall did very well and with a small top up from group funds the new mess tent is now patiently awaiting the start of the camping season.

HANDYWATER FARM

BED AND BREAKFAST

2 TWIN-BEDDED ROOMS ENSUITE
WITH PRIVATE LIVING ROOM
IN SELF-CONTAINED ANNEXE

also

SMALL SELF-CONTAINED FLAT
AVAILABLE FOR SHORT LETS

Ring Sue Colquhoun

01295 - 780660

STUART and JOYCE

welcome you at

'THE GATE HANGS HIGH'

Hook Norton

Traditional Ales in our friendly pub
with excellent food available
in the recently extended restaurant.

Evening Bookings Advisable
Telephone: 0608 - 737387

* BAR MEALS ALSO AVAILABLE *

Open Seven Days per Week.

Bar only on Sunday evenings.

'The Gate Hangs High & Hinders None,
Refresh & Pook and Travel On.'

CONGRATULATIONS to JENNIFER BROWN

Jennifer Brown, Head Chef in the Catering Department at Sibford School, recently completed 20 years' service at the school. To mark the occasion, the staff presented Jennifer with a cake and a *Masterchef of the Year* cookery book.

* S *

STATE REGISTERED CHIROPDIDIST
Mrs MARGARET NELSON DPodM MChS
SURGERY: Ashcroft Clinic
Deddington 01869-338854
HOME VISITS:
Swalcliffe 01295-780309

RALPH C. HOGGINS
MIDDLE TYSOE
WARWICKSHIRE
CV35 0SE
TYSOE 01295 - 680281
SOLID FUELS & LOGS
BOTTLED GAS
GARDEN PEAT/COMPOST
GROW BAGS/SHARP SAND
etc.

AGDON FARM
Brailes,
Banbury OX15 5JJ
0608 - 685226




A warm welcome awaits all our guests. Our comfortable Cotswold stone farmhouse is set in 500 acres of mixed farming, in an unspoilt part of the countryside.

Accommodation with full English Breakfast,
TV room, separate diningroom. Central heating, guests' bathroom, pleasant rooms with tea/coffee facilities.

Contact: Mrs M. Cripps

ALAN HESSEL
ANTIQUE RESTORATION
The Old Town Workshop
St George's Close
Moreton-in-Marsh
Glos GL56 0LP



**SPECIALIST CONSERVATION OF
FINE ENGLISH PERIOD FURNITURE**

Telephone: 0608 650026
Evenings: 0608 685404



flowers for all occasions

Petals

43a Market Place, Banbury, Oxon. OX16 8NW
(Next to Laura Ashley)
Telephone: (01295) 255450



LETTER to the EDITOR

Dear Editor

I am astonished that the February issue of the *Scene* contained no mention of the honour given by the Queen [an MBE] to Joy Spiers for her work in Thailand, helping farmers improve their dairy herds. Joy and her late husband Austin, who died in 1985, used to run the West Bar veterinary surgery in Banbury and lived for many years in Burdrop.

Yours sincerely

Norman Coxon

* § *

D. I. Y. REPORTERS WANTED for the *SIBFORD SCENE*

Some readers may recall that our Ace (and only) Reporter, the delectable Belinda Basnoir, flew off to Marbella last July, with plans to meet up with Sean & Roger at the marina. We don't know what happened next, but one reader (who, understandably, wishes to remain anonymous) reports that Belinda has now moved up the coast and down market - he met her last month in Benidorm, serving up those Spanish delicacies, black pudding & mushy peas, in The British Bulldog Chippy. The poor girl is also trying to put together her return fare by occasional modelling jobs for the local newspapers, *El Sol* and *Mañana*.

So, at present, the *Sibford Scene* does not have a reporter and I would be pleased to receive reports from anyone who feels the urge to dash into print. If you see a news item that you think should be reported in the *Scene* - **Do It Yourself**; if you attend a function you would like to see reported in the *Scene* - **Do It Yourself**. The same applies to reports of births, marriages & deaths, or on any other event concerning Sibford or its residents, present or past.

Before you rush to prepare your first report, there are a few hints and 'rules' worth remembering:

- contact the Editor before writing your item, in case someone else has beaten you to it.

- please include your name & phone number - your name will not be published if you wish to remain anonymous.

- in hand-written items, surnames should be in CAPITALS.

Or, you might, like our old friend and ex-Burdrop resident Norman Coxon, prefer to write a 'Letter to the Editor' - these are always welcomed.

Why not make the *Scene* YOUR magazine?

The Editor.

Young Scene

Hello, and welcome to the March edition of Young Scene.

Word-search.

Can you find the following local villages hidden amongst the letters?

If you fancy being really clever, cover the list of village names and try to find them without clues. There are 11 altogether.

Shutford Epwell Milcombe Tadmarton Sibford Ferris Hook Norton
Brailes Bloxham Swalcliffe Burdrop Sibford Gower

M	I	S	L	A	M	O	N	J	B	L	O	S
M	M	I	L	C	O	M	B	E	T	A	D	I
E	F	B	L	O	X	H	A	M	B	B	E	B
U	I	S	W	I	C	L	O	O	N	B	P	F
H	O	O	K	N	O	R	T	O	N	L	W	O
S	B	R	A	I	L	E	S	M	I	O	E	R
H	T	A	D	M	A	R	T	O	N	X	L	D
U	B	R	I	N	G	O	B	R	T	T	L	F
T	T	M	I	O	O	N	U	W	I	A	L	E
F	K	A	C	N	O	R	R	B	S	D	L	R
O	S	I	B	F	O	R	D	G	O	W	E	R
R	T	A	B	B	L	O	R	H	O	O	K	I
D	T	A	D	L	I	N	O	S	T	L	A	S
C	O	O	K	L	A	M	P	D	O	N	X	T
B	L	O	S	W	A	L	C	L	I	F	F	E

Competition.

In the last few Young Scenes there have been maps of the World and of the British Isles. I have asked you to think about neighbouring villages too. How good are you at drawing imaginary maps?

You can either draw a Treasure Island map or an Enchanted Wood map on paper no smaller than A4. Make your maps as interesting as possible, colour them and name any land-marks.

Write your name, age, and address on the back, and also indicate whether you wish your map to be returned to you. Post the entries in the Young Scene boxes which are in the library at the Primary School and in the village shop. The closing day for entries will be Tuesday, 7th March.

Remember that only children of primary school age are eligible to enter.

Crossnumber.

Lots of you enjoy working out the answers to crosswords but have you ever tried to do a crossnumber? Try this one.

Clues across

- 1 - Two dozen
- 2 - 4 tens plus 2
- 4 - 6×6
- 6 - 1 more than 20
- 7 - 3 twos plus 1
- 8 - 2 less than 7 across
- 10 - 5×5
- 13 - half of 30
- 14 - 6×3
- 15 - 1 less than 40

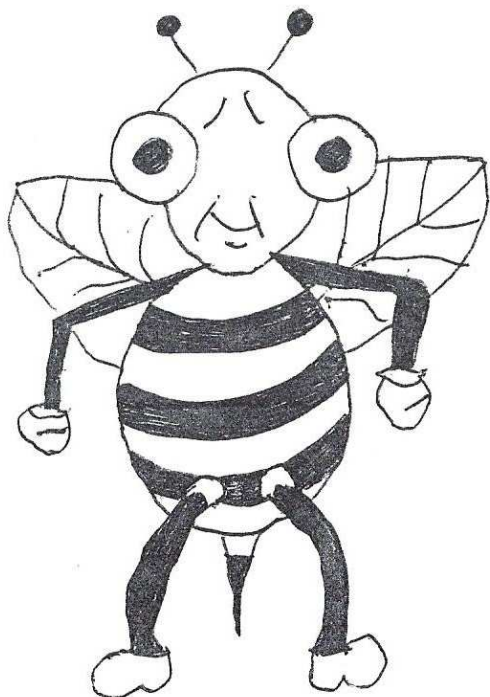
1				2	3
		4	5		
		6			
	7			8	
9		10	11		12
		13			
14				15	

Clues down

- 1 - 100×2
- 3 - Half of 500
- 4 - Twice 16
- 5 - 6 tens + 1
- 9 - 1 more than 500
- 10 - 7×3
- 11 - 5 tens plus 5
- 12 - $1000 - 1$

Eye-eye!

This picture of a bee started with just a pair of eyes. Use the eyes to make up your own pictures of creatures or cartoons.



That's all for this month. Please try to remember to enter the competition--deadline 7th March.

See you next month!

Nature Notes.

Jan 26th. This morning I was shown an ice tower that had grown overnight on a bird table. As with the one I found 4 years ago it had a hole up the middle through which the water must have risen to freeze as it reached the cold air and a side which, on this one, was so flat that it looked as though it had been ground flat. It was taller, about 4 inches, than the other one and was leaning perhaps 30° from the perpendicular. If the photographs that I have taken come out well I am hoping that someone will be able to throw some light on the reasons for its angular form and the way it leaned to the north.

Jan 27th. The wild cherry plum on Mannings Hill is already showing bloom. It is no wonder that it bears so few plums. I rather think that the fruits that do develop are from the odd late blooms that come when their are more insects about to pollinate them.

Jan 30th. This mornings sunshine was warm enough to rouse a yellow brimstone butterfly from its hibernation to fly round the Barley Close.

Feb 14th. It is looking likely that this will be one more to add to this remarkable run of mild winters.



Painting & Decorating.....
Carpentry and Building.
Kitchens improved and
updated, Fitted
cupboards designed and
built, fitted shelves,
picture rails etc For
free estimates and
consultation ring me
Barry Harmer on
Chipping Norton
0608.....643028

The Firs Garage

HOOK NORTON, BANBURY,
OXFORDSHIRE, OX16 5DD

Telephone Hook Norton 737349 and 737641
STD Code (0608)

Mobile Phone 0860 580944 (out of hours)



FULLY EQUIPPED FORECOURT
with
FRIENDLY ATTENDANT SERVICE
for
FUEL SALES, SHOP, CAR WASH
GAS / COAL etc.
OPEN:
Monday - Friday 8am - 6pm
Saturday 8am - 5pm

SALES SERVICE M.O.T. PARTS
ACCIDENT REPAIRS

The Sibfords Society

1995 promises to be a good year. Our Circular Walk Leaflet is now completed and available from members, local libraries and museums. .

At our next meeting on Friday 10th March in the Mission Room at 7.30pm, we plan to have a 1940's memorabilia evening. Please bring along anything which provides a memory of those wartime years - photographs, pictures, names of evacuees, artifacts etc. If they have a link with the Sibfords so much the better. This will be preceded by our AGM when all ideas for possible future projects will be welcome.

Our future meetings are planned for Thursdays so we hope this will enable more people to come along. Dates for the diary :-

June 15	Outside visit
July 20	Jointly with Swalcliffe
October 19	to be arranged

THE VILLAGE SHOP - HOOK NORTON

* NATIONAL LOTTERY *

Grocery - Greengrocery

Wines - Spirits - Confectionery

Newspapers - Magazines - Cards

Flowers, Plants & Accessories

Video Rental - Calor Gas

OPEN Monday - Friday 7am-8pm

Saturday 7am-6pm

Sunday 8am-1pm

Telephone: 0608 - 737245

K. G. PREEDY & SON

GENERAL BUILDERS

for All your Building Work

*

SPECIALISTS in STONE WALLS etc

*

Braggintons Lane, Middleton Cheney

Tel: 01295 - 710977

* Sibford References Available *

Triple M
Services
Quality Repairs TO
All Makes Of Car And
Light Commercial
Vehicles
MOT Prep
Welding
Call M.J Harris
on
Swalcliffe 780614

"AT A VILLAGE CALLED SIBFORD FERRIS"

THE weather hit the headlines on September 22, 1935, thanks to violent hailstorms over many parts of England and Wales the night before.

Chepstow, in Gwent, was one of the worst-hit areas. Hailstones up to two inches across stripped leaves off trees, destroyed the fruit crop, and smashed hundreds of panes of glass in the green-houses at Itton Court.

Near Banbury in Oxfordshire, at a village called Sibford Ferris, the storm was so severe that more than a hundred house windows were broken, and many birds were killed by the enormous hailstones.

An item from the
'Today' newspaper

Yes, this storm really did happen. At that time we lived in one of the houses that used to face on to the Hook Norton road between the entrance to Cotswold close and Nansen House. As the storm was travelling across the country from west to east we caught it's full force.

It struck us during the night and the lightning was almost continuous. I think it was all sheet lightning, flashing from cloud to cloud, as I don't think that it did any damage. Although those houses were not connected to the mains we certainly had electric lighting during that storm. Our father came into our bedroom and held a blanket across the window to stop the glass flying as the hailstones broke the panes. Although the heads of our beds were against the other wall, my sister found in the morning that she had splinters of glass in her bed. The crashing thunder to some extent drowned the sound of the wind

which must have been very strong. In spite of the protection given by the eaves of the thatched roof 44 panes of glass were broken in our house. The terrace of four three storeyed houses further up the road had nearly 300 of their small square leaded panes shattered.

In the morning we found that amongst the drifts of hailstones that had collected against the wall of the house there were still some as big as plums even though they had been thawing for several hours.

The New School (The Hill) also suffered a great deal of damage to it's west facing windows. During the storm the beds were moved across the dormitory away from the windows.

This freak hailstorm only affected a band about a mile wide as it made it's way across the country and the news on the wireless reported that hailstones as big as golf balls fell in Bedfordshire.

We have a photograph of two cottages that now form part of Lambs Croft showing about forty panes of glass broken and another showing the marks made by the hailstones on the stone wall of adjoining outbuildings.

SIBFORD HORTICULTURAL SOCIETY.

Members are looking forward to the 8th. of March at the Village Hall at 8.00 p.m., when they will be having an illustrated talk about Derbyshire Well-Dressing. Mr. Keith Orchard - Robinson has already spoken to the Shipston society whose members thoroughly enjoyed the event.

Then on April the 12th., it is hoped that Mr. Hugh Palmer, a well known garden photographer will be able to come to speak.

On the 10th. of May, the Society will be welcoming Matthew Biggs from Channel 4's T.V. Garden Club who will speak about "Gardens of the Caribbean".

Visitors, at a charge of only 50 pence, will be warmly welcomed at all these events.

Thanks to President Ellen Warwicker, a Coffee Morning, with a Cake and a Bric-a-Brac stall, has been arranged for Wednesday April 12th. from 10.00 a.m. until noon at the Court House. Admission and coffee will be only 50 pence. All are welcome.

The Annual Plant Sale will also take place from 10.00 'til noon at Park Farm House on Saturday 10th. June. Donations of "stock" will be gratefully received on the day of the sale or by members of the Committee, earlier.

During June, it is hoped that the annual "day out" will embrace a visit to the Horticultural College at Pershore.

Smart Hats

To Hire or Purchase

ENQUIRIES WELCOME

28 Dashwood Road, Banbury, Oxon. OX16 8HD
Telephone: (0295) 254444

* J W BAKER *

Electrical Repairs & Installation
Domestic - Agricultural
Industrial

Work Undertaken Promptly

Tel: Swalcliffe 01295 - 788306

CONSERVATIVE ASSOCIATION - Sibford & Epwell Branch

Thursday 9 March - The Branch AGM will be held at 8.00pm at the Tadmarton home of Councillor David Green.

Thursday 30 March - The Annual Dinner will be at The Gate Hangs High, 7.30 for 7.45pm. To book and for further details phone Robert Tompkins (780541) or Peter Baseby (780544).

***** PLEASE NOTE REVISED DATES *****

* S *

LEO CLUB NEWS

The next meeting of LEO Club will be on Tuesday 21 March. Please contact Vivienne Scouse (788320) for details of topic and venue.

* S *

RETIRED ARCHITECT (FRIBA) offers CONSULTANCY SERVICES
for **PLANNING** and **BUILDING PROJECTS**
including **ALTERATIONS** and **EXTENSIONS** of **ANY SIZE.**
MODEST FEES. Phone: **788162.**

TADMARTON POST OFFICE & STORES
Tel: 01295 - 780668
Proprietors: Helen & David Butler

Mon, Fri, Sat. 9.00 - 1.00
Tues, Thurs. 9.00 - 1.00 & 2.00 - 5.30
Wed. 9.00 - 12.30
Sun. 9.30 - 11.30

Counter Sales of Newspapers & Magazines.
Fresh Milk & Cream, Bread, Ice Cream,
General & Greengrocery, Home-cooked Ham.
* Also Off-Licence Sales *

VISIT
WYATTS FARM SHOP
and
TEA ROOMS

OPEN DAILY 10 a.m. - 6 p.m.

FOR HOME PRODUCED
FRUIT & VEGETABLES
CHEESE & DAIRY PRODUCTS
HONEY & PRESERVES
CAKES BAKED ON THE PREMISES

TAKE IN THE BEAUTY OF THE COTSWOLD COUNTRYSIDE
WHILST ENJOYING MORNING COFFEE, MIDDAY SNACKS
AND TRADITIONAL FARMHOUSE TEAS

HILL BARN FARM
GREAT ROLLRIGHT
OXON
0608 - 684835



SIBFORD SCHOOL - TWO DATES for your DIARY

Arthur Miller's play 'The Crucible', based on the 1692 Salem witchcraft trials, will be performed at the school at 7.30pm on 2, 3 & 4 March.

The Finals of the Banbury Rotary Club Young Musician of the Year will be held in the School Hall at 6.00pm on 11 March.

Contact the school office (780441) for details of tickets for both events.

* S *

BBONT Summer Events - Advance Notice
(Berks, Bucks & Oxon Naturalists' Trust)

Saturday 3 June - Garden Party, in aid of BBONT funds, at 'Back Acre', Sibford Ferris, the home of Arnold & Ina Lamb.

Tuesday 20 June - This year's Sibfords guided cross-country circular ramble (Cherwell Walk), leaving Bill & Barbara Crabtree's home at 'The Brambles', Sibford Ferris (½ mile down Woodway Road) at 7.00pm.

* S *

† **BETTY CARRINGTON** †

To all those wonderfully kind and caring people who gave so much help and generosity to Betty and myself in our hour of need and beyond, may I offer my warmest thanks and heartfelt gratitude.

Philip Carrington

* S *

ENGLISH TUTOR

GCSE & 'A' LEVEL

Language and Literature

ADAM LEYBURN B.A. (hons), PGCE.

Tel: 0295 780628

the wykham arms

Sibford Gower 01295 - 780351

A Seventeenth-Century Thatched
FREE HOUSE

Selection of Real Ales
HOME COOKED FOOD

* Wooded Beer Garden *

Ample Seating in Bar & Restaurant
Booking Advisable at Weekends

Accommodation
Children Welcomed

Recommended by Egon Ronay's Guides

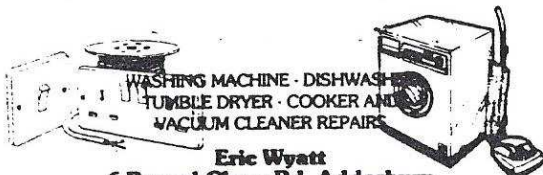
CHARITY SALE at BLENHEIM FARM

£1379.00 was raised at the charity sale on Tuesday 22nd November, which was well up on last year. THANK YOU to all of you who were able to support the day by shopping, eating, helping or donating.

Very grateful thanks have been sent to you all by Dr. Markovitch. He has put the Horton Generals half share towards an ultrasound machine, for the premature baby unit. St. Marys Hospice Birmingham have also sent their grateful thanks. The money they received will go into the coffers to help with the running expenses, which will be nearly £2 million this year and they rely on the generosity of donors to sustain the care they give to so many very sick people.

BIRD FOOD FOR SALE.
SIBFORD GROWN SUNFLOWER SEED.
HIGH PROTEIN FEED FOR SEED EATERS.
£1.25 PER 1.5KG BAG.
DISCOUNT FOR BIGGER QUANTITIES.
PHONE 780380 TO ORDER.

ADDERBURY DOMESTIC APPLIANCES



WASHING MACHINE · DISHWASHER
TUMBLE DRYER · COOKER AND
VACUUM CLEANER REPAIRS

Eric Wyatt
6 Round Close Rd, Adderbury
Tel. No. (0295) 810116

-Ann Woolgrove-
Fabrics &
Soft Furnishings

Phone/Fax:
(01295) 788145

PORTRAITS-
PAINTED OF
PEOPLE · PETS · HOUSES
-AND-
WATERCOLOURS
FOR SALE-
LOCAL LANDSCAPES.

TEL: 0295 780234

CHURCH SERVICES

Society of Friends	Sunday at 10.30 am
Methodist	Sunday at 11.00 am
Roman Catholic Mass (Hook Norton)	Sunday at 11.00 am
(Brailes)	Sunday at 11.30 am
Baptist (Hook Norton)	Sunday at 10.30 am

Church of England, Holy Trinity, Sibford Gower

1 Mar	7.30am	Holy Communion (Ash Wednesday)
	8.00pm	Benefice Eucharist at Epwell
5 "	10.00am	Benefice Eucharist at Swalcliffe
12 "	10.00am	Holy Communion
19 "	10.00am	Holy Communion
26 "	10.00am	Mothering Sunday Family & Parade Service
2 Apr	10.00am	Benefice Eucharist at Tadmarton
9 "	10.00am	Benefice Eucharist at Swalcliffe

Thursdays 2, 9, 16, 30 March, 6 April - 7.30am Holy Communion

† † † † † † †

WOMEN'S WORLD DAY of PRAYER SERVICE

(open to men as well!)

Friday 3 March at 3pm in the Methodist Chapel

Mrs Crofts will speak at this service,
which is being revived again this year in Sibford.

† † †

HOLY TRINITY CHURCH - ANNUAL GENERAL MEETING

The AGM of Holy Trinity Church Sibford will be held on **Wednesday 8 March** in the context of an abbreviated form of Holy Communion which will start at 7.30pm.

Those who are not listed on the Electoral Roll of the church, and would like to be included, are asked to contact Mrs Mary Poulton at 'Beyond the End', Sibford Gower (behind the church) or telephone 788306.

Norman Nash

† † †

LENTEN HOUSE DISCUSSION GROUPS

Everyone will be welcome at these Lenten meetings, which will be held at Tadmarton on Sundays at 5pm or at Burdrop on Tuesdays at 3pm.

The subject for discussion will be 'Perspectives on Prayer'. For further details please contact Timothy Wimbush (780555).

SIBFORD BUS SERVICES

1. SIBFORD GOWER TOWN ESTATES CHARITY

Free Bus Service for Residents of Sibford Gower and Burdrop

			Depart	Return
Wednesday	1, 15 & 29 Mar	to Chippy	11,00am	1,00pm
Friday	10 & 24 Mar	to Banbury	10,00am	12,00noon

The pick-up points are:

<u>Banbury Bus</u>	<u>Chippy Bus</u>
Village Hall	Village Hall
Crossroads	High Meadow
High Meadow	Crossroads
	The Colony

2. REGULAR SERVICE - MIDLAND RED, 490

Sibford - Banbury

Monday - Saturday	Outward	Return (read up)
Sibford Gower Crossroads	7,30am	6,30pm
Sibford Ferris School	7,32	6,28
Banbury Cross	7,55	6,08
Banbury Bus Station	8,00am	6,05pm

3. REGULAR SERVICE - JEFFS COACHES, Shipston - Sibford - Banbury

Monday - Saturday	Outward		Return (read upwards)		
Sibford Gower School	09,45am	11,45am	11,45am	12,50pm	14,50pm
Sibford Ferris School	09,49	11,48	11,42	12,42	14,47
Banbury Cross	10,13	12,13pm	11,17	12,17	14,17
Banbury Bus Station	10,15am	12,15pm	11,15am	12,15pm	14,15pm

4. REGULAR SERVICE - CHERWELL VILLAGER,

Sibford - Banbury

Wednesday only	Outward		Return (read up)
Sibford Gower	9,55am	1,15pm	1,15pm
Sibford Ferris	9,57	1,20	1,20
Banbury	10,50am	2,15pm	1,00pm

5. REGULAR SERVICE - MIDLAND RED, X60 Hook Norton-Banbury-Sibford- -Shipston-Stratford-Coventry

	Outward	Return*	
Sibford Ferris	09,39am	2,15pm	* All return times
Sibford Gower	09,41	2,13	are one hour later
Shipston	09,55	1,59	during
Stratford	10,25	1,30	School Holidays
Coventry	10,55am	1,00pm	

(read up)

SIBFORD CRICKET CLUB.
ANNUAL GENERAL MEETING TO BE HELD AT THE
FRIENDS SCHOOL LIBRARY ON MARCH 2ND AT 8.00 PM.

WEEKLY EVENTS

Guides	Hook Norton	Monday	evening
Youth Club	Village Hall	Monday	7.00 - 9.00pm
Mobile Shop		Tuesday	10.00am - 4.00pm
Brownies	Village Hall	Tuesday	5.15 - 6.45pm
Beavers	Village Hall	Wednesday	5.15 - 6.30pm
Badminton	Friends School	Wednesday	7.30 - 9.30pm
Badminton	Village Hall	Wednesday	8.00pm
Mums & Toddlers	Gillett House	Wednesday	10.30am - 12noon
Fielding Day Centre	Friends School	Wednesday	12.30pm - 4.30pm
Mobile Fish & Chips		Thursday	
Cub Scouts	Village Hall	Friday	6.00pm
Scouts	Village Hall	Friday	following Cubs
Playgroup	Village Hall	Mon,Wed,Fri	9.00am - 12noon

* * * \$ * * *

**FORTHCOMING
EVENTS**

DIARIST - Norman Nash (Tel 780275)

12 Apr	Wednesday	Sibford Horti Society Coffee Morning - see p17	[7806011]
8 May	Monday	VE Day - Epwell all day celebrations	[7807731]
10 May	Wednesday	Sib Horti - TV Chan 4's Matthew Biggs -see p17	[7806011]
12 May	Friday	Sibford Gower Annual Parish Meeting - see p2	[7804621]
27/29 May	Sat/Mon	Swalcliffe Festival	[7802741]
3 June	Saturday	Garden Party for BBONT, S Ferris - see p19	[7803571]
10 June	Saturday	Horti Society Plant Sale - see p17	[7806011]
17 June	Saturday	Sibford Church Garden Party 2.30pm	[7802751]
18 June	Sunday	Epwell Village Fete 2.00pm	[7807731]
20 June	Tuesday	Sibford Circular Ramble - see p19	[7806351]
16 July	Sunday	Open Gardens - Sibford Gower	[7802221]
19 Aug	Saturday	Sibford Horti Soc Annual Show, Hall & Marquee	[7804241]
14 Oct	Saturday	Sibford Harvest Service & Supper	[7802751]
28/29 Oct	Sat/Sun	Tadmarton crafts sale for Kathrine H'se	[7804531]

----- \$ -----

LOCAL CORRESPONDENT to BANBURY GUARDIAN - Sheila Baseby (Tel 780544)
 Copy for Guardian by FRIDAY please

LOCAL CHERWELL DISTRICT COUNCILLOR - David Green (Tel 780444)

THE DEADLINE for CONTRIBUTIONS
for the APRIL SIBFORD SCENE will be
*** TUESDAY 21 MARCH ***

Contributions to Editor, Treasurer or Shop

CALENDAR for MARCH 1995

- Thur-Sat 2nd-4th 'The Crucible' - Sibford School - see p19
Thursday 2nd Sibford Cricket Club AGM, 8pm - see p23
Friday 3rd Women's World Day of Prayer, Service at 3pm - see p21
Friday 3rd Coach Trip to 'Oklahoma' at Stratford
Saturday 4th Scouts Paper Collection
Tuesday 7th Friendship Club - Village Hall 2pm - see p6
Tuesday 7th Sibford Ferris PARISH COUNCIL MEETING - see p6
Tuesday 7th DEADLINE for YOUNG SCENE ENTRIES - see p12
Wednesday 8th PTA Jumble Sale, 2pm, Primary School Hall - see p1
Wednesday 8th Mobile Library in Sibfords & Burdrop (2.25 - 4.20pm)
Wednesday 8th Horti Society - 'Derbyshire Well-Dressing' - see p17
Wednesday 8th Holy Trinity Church Sibford AGM - see p21
Thursday 9th Conservatives AGM - see p18
Friday 10th Sibford School Open Morning, 10.00 - 12.30pm - see p9
Friday 10th Sibfords Society meeting - see p15
Saturday 11th Young Musician of Year Finals, Sibford School - see p19
Tuesday 14th W.I. Meeting - see p7
Tuesday 14th Sibford Guides - see p3
TUESDAY 21st # DEADLINE for SIBFORD SCENE CONTRIBUTIONS #
Saturday 18th Skip in Gower - Pound Lane
Tuesday 21st Friendship Club - Coach Tour 10am - see p6
Tuesday 21st LED Club meeting - see p18
Wednesday 22nd Mobile Library in Sibfords & Burdrop (2.25 - 4.20pm)
Friday 24th Sibford Gower PARISH COUNCIL MEETING - see p2
Saturday 25th Recycling Unit in Gower - Acre Ditch - see p2
Saturday 25th Wine Tasting, Temple Close, for Scouts - see p9
Thursday 30th Conservatives Annual Dinner - see p18

CALENDAR for APRIL (part)

- Saturday 1st Scouts Paper Collection
Saturday 1st Church Jumble Sale, Village Hall 2pm - see p1
Friday 7th Sibford Playgroup Easter-Egg Hunt - see p3
Wednesday 12th Horti Society meeting - see p17

* **SIBFORD SCENE** *

Editor: Ray Hembrey, Virginia Cottage, H'k Norton Rd, Sibford Ferris (788265)
Treasurer: Timothy Wimbush, The Rectory, Acre Ditch, Sibford Gower (780555)
Advertising Manager: Ivor Hopkyns, Elmridge Farmhouse, Sibford Gower (788367)

Personal Adverts: up to 4 lines £1.00, 8 lines £2.00, larger - ask Editor.
Commercial Adverts: small £15.00 p.a., larger - ask Advertising Manager.
Loose Leaf Insertions: £10 for distribution - ask Advertising Manager.