



SIBFORD SCENE



NO. 165
APRIL 1993

SIBFORD'S OWN 'MARATHON MAN' GOES FOR THE BIG ONE

A regular sight around the village is the tracksuited figure of David Bennett; now in his 50th year, he is preparing for his first run of 26 miles 385 yards - "The London Marathon" - on Sunday 18th April.

Being a good sort, he is expending his energies on behalf of two charities - The Anthony Nolan Bone Marrow Trust and The Shaw Trust - the organization whose mission is to place people with severe disabilities into employment.

David is aiming to raise as much money as possible for both of these charities, with the support of individuals and village organizations; indeed, he is willing to run *free* for the first 26 miles, provided that a solid endowment is given for those final 385 yards!! Alternatively, you can sponsor him in units ranging from 2p to 20p for each year of his age.

Don't forget to watch your TV screen at 9.30am on 18th April - see it (and possibly David) live!

If you would like to sponsor him in this worthy endeavour, please contact David at 3 Mannings Close, Sibford Ferris, or telephone him on Swalcliffe 373. **GOOD LUCK DAVID.**

+ + + + +

HELP NEEDED for CHURCH SPRING CLEANING

Holy Trinity Church Spring Cleaning time has come round again. Our weekly helpers will be doing their usual good work but, like last year, some extra help would be wonderful - 3rd April starting about 10.00am -

Toonie Law

+ + + + +

SIBFORD FERRIS PARISH COUNCIL

At our recent Parish Council Meeting the following items were discussed which you may find of interest -

We have received a copy of a Local Directory produced by Oxfordshire Family Health Services. This lists all the doctors, dentists, pharmacists and opticians in Cherwell district. Anyone needing to refer to it can obtain it from the Clerk (8393). We have ordered another copy which we hope can be held at the Post Office.

Banbury District Carers have sent their latest newsletter and have asked if anyone would like to be on their list for a direct mailing. If you are interested you should contact them at Alexandra House, Church Passage, Banbury OX16 8JZ (phone 0295-264545).

There are a number of highway matters that have been outstanding for a long time now. You will have noticed that the verges in Main Street and Hook Norton Road still require attention as does the flooding problem and potholes in Woodway Road. Members of the Council are arranging a site meeting with a County Engineer's Department representative in order to try and hasten this work along.

IMPORTANT - THE NEXT MEETING OF THE COUNCIL WILL BE THE ANNUAL PARISH MEETING. THIS IS TO BE HELD IN THE LIBRARY OF THE FRIENDS SCHOOL ON TUESDAY 20TH APRIL AT 8PM. PLEASE DO YOUR BEST TO ATTEND.

Pat Romans Clerk SFPC

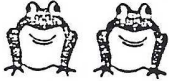
Elizabeth Webber AMAR.
REFLEXOLOGIST

Yew Tree House
Sibford Gower
Banbury
Oxon OX15 5RT

Telephone:
0295 788101

The ancient healing art of Reflexology is a study of the reflexes of the feet corresponding to every part of the body. Working on these reflexes relaxes tension and helps the body to seek its own equilibrium.

A reflexologist uses hands only to apply gentle pressure to the feet. Sensitive, trained hands can detect tiny deposits and tensions and, by removing these obstructions, help to improve circulation and restore the free flow of energy to the body.



NATURE NOTES



Feb 20th. I was lucky today to see a pair of Trout spawning in a small area of gravel in a stream at Temple Mill.

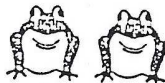
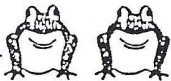
Feb 24th. The apples that we put out when the weather is cold attract a good variety of birds but the Green Woodpecker that came today was a surprise. I had no idea that apples formed part of their diet.

Mar 13th. This glorious weather has brought a great many Yellow Brimstone and a few Peacock butterflies out of hibernation, but I have not seen any Tortoiseshells yet.

Mar 14th. I have never seen such a concentration of Frogs as there is in our garden pond at the moment. There are, by my estimate, over two hundred of them. Two years ago we had a lot of tadpoles so perhaps they are now returning to spawn. When it is quiet and a great many of them are croaking at once the sound merges to become a constant, but pleasant purr. When they are disturbed they dive to crowd the bottom of the pond wherever there is weed cover. There is not a great deal of spawn yet but I expect there will be in due course.

Mar 16th. As well as the male and female Blackcap that I mentioned last month, we also had two Willow Tits feeding at our bird table today.

Mar 18th. In February (filldyke!), often a very dry month, I measured less than a quarter of an inch of rain and March has so far brought only fourteen hundredths of an inch.



LEO
CLUB



Ladies
Evening
Out

At the March meeting at Glennis Hutchinson's, members enjoyed a cozy evening in the firelight, listening to taped reminiscences of life in the early 1900's in Suffolk. Then Glennis's coffee & biscuits were accompanied by members' own tales of 'the old days', as told to them by their parents & grandparents - altogether a warm & unique evening.

The next meeting, at 8pm on 20 April, will be at the home of Linda Conway at Shenington. First, our hostess will talk about her 1992 Caribbean cruise and then Glennis will show slides of her holiday in Cyprus. *Bring your own sunglasses.*

* * * § * * *

'Thank You' from Sibford Ferris Playarea Group

The Jumble Sale held on Saturday 6 March gave the Playarea funds a boost of £85.00.

Grateful thanks to Sarah Randall & family for the use of their garage and 'Thank you' to all those who came along to support us.

Bernie Jones Chairman/Secretary S.F.P.G.

SIBFORD FERRIS POST OFFICE, STORES

Tele: Swalcliffe (029578) 795

Opening Hours: (NOW OPEN AT 8.00AM)

Monday, Tuesday, Wednesday, Friday

8.00am - 1.00pm

2.00pm - 6.00pm

Thursday, Saturday

8.00am - 1.00pm

Sunday

11.00am - 12.30pm

Groceries, Greengrocery, Stationery,

Confectionery, Cigarettes,

Wines & Spirits.

We can deliver if required.

STUART & JOYCE

welcome you at

'THE GATE HANGS HIGH'

Hook Norton

Traditional Ales in our friendly pub
with excellent food available
in the recently extended restaurant.

Evening Bookings Advisable

Telephone: 0608 737387

Open Seven Days per Week.

Bar only on Sunday evenings.

"The Gate Hangs High & Hinders None.

Refresh & Pay and Travel On."

RESULTS of COLLECTION for SIBFORD SCENE FUNDS
by
'The Brown Envelope Scheme'

Our Treasurer reports that, up to 20 March, 90 envelopes have been returned out of the 420 delivered. The total amount collected is £350.

A number of villagers contributed amounts which were astonishingly generous and represented over one third of the total sum. To them and to all of you who responded - representing just over one fifth of our village households -

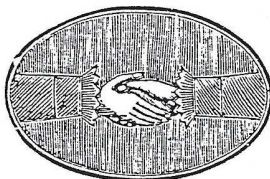
* * A VERY BIG 'THANK YOU' * *

The Fund Collection Scheme will remain open for a further couple of weeks and the collecting box is still available at the Post Office (by kind permission of Mr & Mrs Peck) for anyone who has not yet made a donation and who appreciates the *Sibford Scene* and feels that the efforts of the 37 volunteers that make up its 'staff' are worthy of continued support.

An Income & Expenditure Account for the year ending 31 March will be published in the May edition of the *Scene*.

* * * § * * *

WELCOME
TO
SIBFORD



ALL
NEWCOMERS

If you have recently joined us and have not yet received a copy of the 'Welcome to Sibford' leaflet, please telephone Petra Berry on Swa. 462 (Gower or Burdrop) or Jane Holliday on Swa. 500 (Ferris) and a copy will be delivered to you. The information will help to make you feel at home - by acquainting you with the services, schools, churches, clubs and societies that are currently active in the villages.

This month we say "Welcome" to Esther Haney & Chris Harding, who have moved into 1 Meadowcrest, Burdrop. They both come from Leeds but moved here from Birmingham.

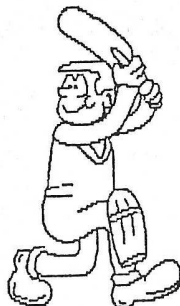
Esther teaches French & Spanish at Blessed George Napier School and Chris works at Alcatel Network Systems in Banbury. They enjoy walking & hiking and have toured Australia for one year.

SIBFORD CRICKET CLUB

AGM Results

Expanded Fixtures List

Indoors Nets now on Fridays



The recent Cricket Club AGM saw the re-election of Brian Holliday as Chairman with David Inns as Captain of the Saturday team playing League and Cup games, with Ron Morbey as Vice Captain and a use of 'on the day' captains for the friendly Sunday and evening games. It is hoped that as many players as possible will skipper the team for a match to find out how difficult a task it really is!

The season will be made up of 16 Saturdays of Banbury League and George Clark Cup cricket and 21 Friendly fixtures on Sundays or mid-week evenings. This is a large increase in the number of friendlies which represents the efforts of our Fixture Secretary, David Bennett (alias '*Marathon Man*'), and the clubs commitment to providing cricket for all those who wish to play and not just the eleven picked for the league team. We will once again be playing on the Friends School's ground and all supporters are welcome.

Our indoor net sessions have now started on Friday evenings from 6.00 to 7.15 pm in the Friends School sports hall at a very reasonable £1.00 per person. Any prospective new members are encouraged to come along and join us for an evening.

The other club officers, also re-elected, are David Bennett as Treasurer and Adrian Lamb as Secretary and, just to make sure he hasn't a spare moment all season, David Bennett has also taken on the role of Assistant Secretary to the Banbury and District Cricket League, which puts him in charge of the week-to-week running of the League.

Anyone in need of more information about the Club can phone the Secretary on 380, or come along to Nets on a Friday.

Π ○ Π ○ Π ○ Π

! ATTENTION ALL CONTRIBUTORS!

THE DEADLINE for the *MAY SIBFORD SCENE*
will be

* TUESDAY 20 APRIL *

It might not be possible to include copy
that arrives after that date.

§ § §

HEALTHY LIFESTYLES

The Healthy Lifestyles Group continues to meet at
Sibford Surgery from 1 - 2pm on alternate Wednesdays.
Telephone 213 for further details of these sessions
which are open to all of our patients.

* * * § * * *

HELPLINES HELPLINES

The Samaritans	Banbury 270000
Young People's Helpline	(0865) 310810
'Life' Pregnancy Counselling Service	Banbury 261257
Banbury Family Centre	Banbury 266358
Katherine House Counselling Service	Banbury 272216
Victim Support Schemes	(0869) 40751
Relate (Marriage Guidance)	Banbury 258141
Cancer Link	(0865) 257946
Banbury Community Transport Assoc.	Banbury 255863
Oxfordshire Rural Community Council	(0865) 512488

(Knowledge is power, and those who
feel powerless, in need or fear can
be helped by knowing who to contact
for support and advice. If you know
of a helpline not listed above,
please submit the details to
Banbury & District CVS.)



SIBFORD SCHOOL

Sibford Ferris,
Banbury,
Oxon. OX15 5QL
Telephone: (0295) 78441
Fax: (0295) 78 8444

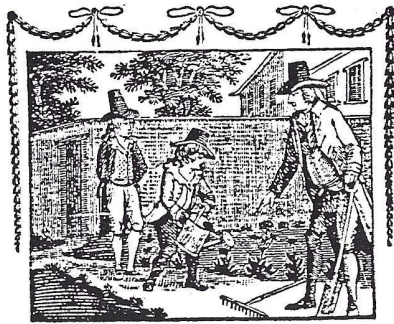
THE JUNIOR SCHOOL (7-11)
Full preparation for Secondary Education

THE SENIOR SCHOOL (11-16)
Broad Curriculum leading to GCSE

THE SIXTH FORM (16-18)
Combination of the Diploma in Vocational
Education and A level Studies

- * Nationally known Dyslexic Department
- * Small classes and highly supportive atmosphere
- * New Sports, Music and Drama Facilities
- * Widespread use of Information Technology

SIBFORD
HORTICULTURAL
SOCIETY



The March meeting included an intriguing talk on 'The Value of Plants' by nurseryman Frank Gardener from Hornton, who also brought along some of the excellent plants he had raised, for members to purchase.

With Spring in the air (now & then) we begin to dream of faraway places, so we have arranged a return visit by Mr Sheasby, who will tell us all about 'Mediterranean Wild Flowers' at our next meeting, in the Village Hall at 8.00pm on 14 April. **STOP PRESS - IT MAY BE NECESSARY TO CHANGE THE VENUE. CONTACT Ray Henbrey (8265), Sheila Baseby (544) or Roger Powell (525) near to the 14th FOR LATEST INFORMATION.**

Non-members are invited to attend (50p) - you don't have to be a 'horticulturist' to enjoy our evening meetings.

Members are reminded that the **OUTING to the Malvern Show** will be on **SUNDAY 9 MAY**. Please book your seats by 23 April with Sheila Baseby (544). Tickets will be about £8, including admission to the Show. **NON-MEMBERS ARE WELCOME TO JOIN US FOR THIS FUN DAY OUT.**

* * * * S * * * *

TURPINS LODGE

STABLES

Indoor School Facilities
Excellent Escorted Hacking
All Ages Catered For
Private & Group Tuition
Full & Part Livery

Hook Norton (0608) 737033

HANDYWATER FARM

BED AND BREAKFAST

2 TWIN-BEDDED ROOMS ENSUITE
WITH PRIVATE LIVING ROOM
IN SELF-CONTAINED ANNEXE

Home from home in a
beautiful rural setting

Ring Sue Colquhoun
(0295 78) 660



SALE of
CHAIN STORE 'SECONDS'
In Aid of VILLAGE HALL FUNDS

On Saturday 10 April (Easter Saturday) at 10.30am
at the Village Hall, there will be a 'Seconds' Sale
- a wide range of clothes & linen at lower prices
than at the famous chain stores.

Items on sale will include:

LINEN

1. A wide range of Supersoft Towels - Hand, Bath, Bathsheets and Face Cloths.
2. Embroidered Towels - Hand and Bath.
3. Flat Sheets, Fitted Sheets and Valances, in single and double sizes + Pillow Slips. These are usually in 5 plain colours and are perfects.
4. Large boxes of Single, Double and King Size Quilt Covers. These include Pillow Cases.
5. Cotton Tea Towels, Terry Tea Towels, Kitchen Towels, Oven Gloves, Aprons, and Table Cloths.
6. Pillows and Continental Quilts (12 TOG, single, double and king size).
7. A wide range of underwear for men, ladies and children.

CLOTHES

For Ladies

Skirts, blouses, dresses, leisure and jogging 'suits, trousers, jumpers, T-shirts, underwear and other seasonal wear.

For Children

T-shirts, shorts, dresses, jumpers, swimwear, jogging suits, tracksuits, trousers, underwear and other seasonal wear.

For Men

Here our range is more limited, but there are still many bargains to be had, including underwear, jumpers, T-shirts and tracksuits.

* * Refreshments will be served * *

FOR A WIDE RANGE OF
BEAUTIFUL FABRICS
CURTAINS & BLINDS
 PLEASE CONTACT -
 ~Ann Woolgrove~
 ~0295-788145~

MOBILE SERVICING
 MOT REPAIRS & WELDING
 GARDEN AND DOMESTIC REPAIRS

**triple
 "m"
 services**

TEL. SWAL 614
 FAIR RATES
 ALL WORK GUARANTEED

[Following the enormous success of the 1992 AGM held in a jacuzzi, the local Conservative Association had planned this year's gathering as a naked wallow in Robert Tompkins' silage pit. Unfortunately the green shoots of recovery had only produced a mere half inch of silage, barely sufficient to cover their toes. So]

**NORTH OXFORDSHIRE CONSERVATIVE ASSOCIATION
SIBFORDS & EPWELL BRANCH**

The Branch Annual General Meeting took place at Parsons Barn Farm (Mr. & Mrs. Robert Tompkins) on 11th March. The Chairman reported on a successful year and looked forward to continuing the good work. The Treasurer made a similar report.

It was agreed that the Chairman, Robert Tompkins, the Treasurer, Peter Baseby and the Secretary, Sue Bailey would continue in office. Ginny Bennett was elected as Assistant Secretary and David Green as Social Secretary. The other existing Committee members were to continue to serve with the exception of Tponie Law and Bobby Harbour who were retiring and who were thanked for their many contributions to the Branch activities over the previous six years.

The meeting was then addressed by David Turner, our County Councillor, and Kevin Thorpe, our agent, both of whom stressed the importance of the County Council elections taking place on MAY 6th.

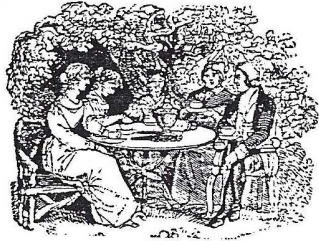
The meeting concluded with a vote of thanks to Mr. & Mrs. Tompkins for their hospitality.

The next function will be 'A 40's Dance' taking place on Saturday, 3rd. April at the Village Hall. Dancing will be to a live Band and a hot supper will be served. A bar will also be available. Tickets from Peter Baseby (544). Dress for the times - but optional. £8.50

The Summer Event will be on SATURDAY, 19th JUNE, not 19th July as reported in last month's Scene - a typing error! It will be held at Burdrop House Barn and will include a Barbecue, a 50/50 Auction and a Punch & Judy show - commencing at 6.30 p.m. Fuller details will be included in the May Scene.

Another Diary Date: our Winter Event will be on SATURDAY 27th November with the Banbury Operatic Society.

FRIENDSHIP
CLUB
DIARY



TUESDAY 6 APRIL - Village Hall 2.00pm
A Meeting and Tea.

TUESDAY 20 APRIL - Evening Outing starting 5.45pm
Drive around stopping at
New Town Nether Westcott.

TUESDAY 4 MAY - Village Hall 2.00pm
Annual General Meeting. A.L.B.

* * S * *

HOOK NORTON WINES

We sell many interesting wines. For
informative list and friendly advice
contact: BRENDAN DUROCK

*Bardfield, Bourne Lane, Hook Norton,
Banbury, Oxon. OX15 5PF.*
RING: 0608 737502

**GENTLE YOGA
FOR EVERYONE**

At Sibford School
Sports Hall

Mondays
7.15pm - 9.15pm

For Details & Enrolment
Telephone

ELAINE MEEK
(0295) 730289

The Firs Garage

OSAKA
JAPAN

DAIHATSU

- MOT TEST CENTRE
- CAR BODY REPAIRS
- ACCIDENT REPAIRS
- SERVICE & PARTS FOR ALL
MAKES OF CARS

**DAIHATSU CAR &
FOUR WHEEL DRIVE
DEALER**

Excellent After Sales Service
by Family Run Business

TEL: (0608) 737349

HOOK NORTON, BANBURY, OXON

Est since 1960

OPEN 8.00 AM - 6.00 PM MON - FRI
SAT 8.00 - 5.00



Stand Above
Quality
Daihatsu

Quest financial services
INDEPENDENT ADVICE

VAUGHAN ELLIS

Partner

Market Place
Chipping Norton
Oxon. OX7 5NA

Tel: 0608 644575



AT SIBFORD GOWER MANOR

By MARGOT HIRONS

WHEN two people come together to discuss the life of a great man the old query inevitably arises; how much of his greatness is due to nature and how much to nurture? Had he spent his impressionable years in a different environment would his genius have developed along different lines? Would it have developed at all? If, for example, Frank Lascelles had been born in a Victorian villa of some mouse-coloured suburb, should we in this book be hailing him to-day as a supreme artist of the twentieth century? It is hard to say, for fate was kind, and Frank Lascelles was born and brought up in the green and white and gold beauty of the hills and dales of Sibford Gower. One might say that he has spent the most of his private life in this village which lies hidden in the foothills of the Cotswolds; after every spell of toil and triumph he has found sanctuary in this calm and lovely place.

With inconsequent charm his ancient Manor House spreads itself down half the length of the village street. It is so long and rambling and so much faceted with casements and gable ends, that tidily-minded folk imagine it to be at least half a dozen houses. Its wide sweeps of thatch, its beams and stone-built bulk give it an air of confident strength and endurance. The house is typical of the man. Or is it that the man is typical of the house?

Others have written of the work and success of the great Master of Pageantry. I am not qualified to touch upon these aspects of his life. The Frank Lascelles I know is a simple creature in a painter's blue smock who is wont to throw down his palette and walk through the gardens at Sibford Gower with a wondering country child. Whenever he comes into my mind the season changes into high summer, and I find myself gazing at a perfumed tapestry of rose and amber, azure and grey. I

smell again the queer tang of catmint and the melting sweetness of June lilies. Such a mosaic of an afternoon! A handful of maize thrids into the stone courtyard, and a flock of rice-white doves forgather there. In the studio there are beautiful heads or bright flower paintings to be admired, and a lump of clay to be marvelled at. By the paddock-gate friendly primrose ponies wait for a wisp of hay. Then from the Great Hall comes a sonorous flurry of organ music, and the house, the whole world, throbs with sound. . . . Then silence. . . . Then, still swinging on the gate of memory, I hear the rippling dreams of a piano. . . . Once more the fields are full of summer.

How can I possibly make plain this great man's kindness to an ignorant country child? The child I was, marvelled to find a companion whose talk made the smallest episode of the common day seem so full of reality and magic. It never occurred to one that he was great and famous; he seemed just a simple soul who, like a child, could become all lit up by the homeliest simplicities, as only great souls can. I felt that he appreciated yellow ponies and cowslip-balls, rag rugs, and patchwork covers, in much the same way that I enjoyed them. I knew that he possessed a charm that other people had not—a quality which, long after, I recognized as a sense of the Past. He was able to make the hills round Sibford, and the sweeps of the Avon valley beyond, seethe with the recaptured life of other days. I never connected such wizardry with mere history! . . . We watched the Neolithic men toiling along the ancient British trackway towards Rollright Stones . . . we saw young Shakespeare tramping to London . . . and a hunted King Charles. . . .

Frank Lascelles showed me that the dead past can be made to bud and flower again and bring forth its old sunlight. . . .

* * * § * * *

The *Sibford Scene* is indebted to the *Oxford University Press* for the above two-page extract from their 1932 publication, '*Frank Lascelles - Our Modern Orpheus*', which has recently been sent to us by Mary Wyatt.

FUN TEA PARTY in aid of BBONT (Berks, Bucks & Oxon Naturalists' Trust)

2.30pm Saturday 5 June at Woodway Farm, Sibford Ferris

Full details in the May edition of *Sibford Scene*

PLEASE MAKE A NOTE in your DIARY of this FORTHCOMING EVENT

* * § * *

Oddjob

CARPENTRY PLUMBING ELECTRICS HOUSEHOLD REPAIRS

★ NO ODDJOB TOO SMALL ★
FREE QUOTATION - NO OBLIGATION

TEL: 029578 468
OF 355

HUGO SEELY

STICKLEYS HOUSE, SIBFORD GOWER, NR BANBURY, OXFORDSHIRE

AGDON FARM

Brailes,
Banbury OX15 5JJ
Tel: (060 885) 226



A warm welcome awaits all our guests. Our comfortable Cotswold stone farmhouse is set in 500 acres of mixed farming, in an unspoilt part of the countryside.

Accommodation with full English Breakfast.

TV room, separate diningroom. Central heating, guests' bathroom, pleasant rooms with tea/coffee facilities.

Contact: Mrs M. Cripps

RALPH C. HOGGINS

MIDDLE TYSOE
WARWICKSHIRE
CV35 0SE

TYSOE (0295 680) 281

SOLID FUELS & LOGS
ESSO BOTTLED GAS
GARDEN PEAT/COMPOST
GROW BAGS/SHARP SAND
etc.

STATE REGISTERED CHIROPODIST

CAROL CORDINGLEY M. CH. S.

Home Visits By Appointment

Tele: Banbury (0295) 720862



ALAN HESSEL ANTIQUÉ RESTORATION

The Old Town Workshop, Saint George's Close,
Moreton-in-Marsh, Gloucestershire, GL56 0LP

Telephone: Moreton 50026

Evenings Brailes 404

SPECIALIST CONSERVATION OF
FINE ENGLISH PERIOD FURNITURE

SIBFORD GOWER PARISH COUNCIL

National Spring Clean / Litter Blitz 1993

16 - 25 April

The Gower Parish Council are supporting the County and National scheme by tidying up our village. Please help us to collect litter by coming along to the Village Hall at 2pm on Saturday 17th April. Sacks will be provided, but please wear strong shoes/boots and protective gloves. Younger children will be accompanied. Please come and help - *many hands make light work.*

The Rubbish Skip in the Gower will be on 17th April. Villagers are reminded not to leave rubbish by the skip once the skip is full. The Council stresses that if the skip is misused, we will stop having one. Any large household items will be collected from your home by Cherwell District Council (tel: 9-252535 ext 4223).

Just a reminder of the Annual Parish Meeting. This will be held at Sibford Primary School Hall on Thursday 22nd April at 7.30 pm. All welcome.

Petra Berry

Clerk SGPC

* * * S * * *

RECIPE CORNER

This is the second in our intermittent series of favourite recipes - this one is from Jane Holliday.

Toffee Bread

One of my happy childhood memories is of sitting around a huge log fire on Winter Sunday evenings eating Toffee Bread - a treat promised by Mum after we first helped with the farm chores. Here is the recipe.

Melt golden syrup & butter in a frying pan (I have never known the quantities - I just guess!). Cut thick slices of white bread into quarters and fry them on both sides, being careful not to burn them. Leave to cool before eating. Delicious!



WHAT'S ON AT CHIPPING NORTON THEATRE

Do you know that you can pick your own movie? For that special celebration, perhaps a birthday or an anniversary, or just sweet memories, you can book a favourite film, receive 10 tickets and make use of The Theatre Gallery and Bar for an after-movie party. All for just £80.00. Additional tickets can be bought at the normal rate.

Turning to the programme for the next five weeks:-

THEATRE

APRIL

Thurs 15 OIGE in concert 8.00 pm
 Traditional Irish music and songs played with freshness and vitality and featuring the voice of Cara Dillon, one of the finest singers in Ireland today.

Weds 21 BLUEBEARD by Max Frisch, with SWAN SONG by Anton Chekhov as a curtain raiser. 8.00 pm

Fri 23 FAITH HEALER by Brian Friel (author of the award-winning "Dancing at Lughnasa"). "A magnificent production, a must for all theatregoers" (John Thaxter, The Times). 8.00 pm

Mon 26 FOUR MEN AND A DOG in concert. 8.00 pm
 Welcome return of this Irish supergroup.

Fri 30 H.M.S. PINAFORE - from Scratch. 8.00 pm
 Ian Macmillan directs a team of singers from British opera companies and you - the audience. A fun-filled evening guaranteed!

MAY

Sun 2 STEAFEL still Solo. The wonderfully funny Sheila Steafel returns to Chippy by popular request. 8.00 pm

CINEMA

APRIL

Sat/Sun

3/4

STRICTLY BALLROOM (PG). Back by popular request! 7.30 pm

Mon/Thurs

5/8

THE PRINCESS AND THE GOBLIN (U). 2.30 pm
 Cartoon feature film.

INTO THE WEST (PG). Lyrical movie set in the Ireland of travellers and legend. 7.30 pm

Tues/Wed

13/14

HONEY I BLEW UP THE KID (U). 2.30 pm
 Mad Professor (Rick Moranis) does it again!

Fri 16

ROOM WITH A VIEW (PG). 7.30 pm
 A Pick Your Own Movie.

Sun 25

GLENGARRY GLEN ROSS (15). 7.30 pm
 With Al Pacino, Alec Baldwin and Jack Lemmon.

MAY

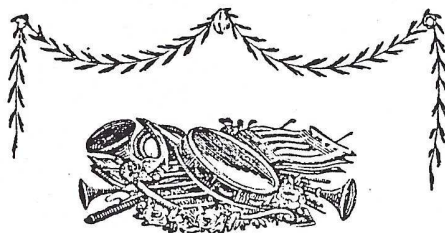
Sat 1

THE DOUBLE LIFE OF VERONIQUE (15). 7.30 pm
 French/Polish collaboration - subtitles.

*Further information can be obtained from the box office (0608 642350)
 Monday to Saturday 10:am - 6 pm.*

Vera Jones

SUCCESS FOR
SIBFORD'S
YOUNG MUSICIANS



Anna Pidgeon playing the flute, Mary Holliday playing the piano and Frank Soden on the trumpet all took part in the Banbury Young Musician of the Year Competition, held at Sibford School recently.

Anna came third in the Junior Wind Section and Frank won the cup in the Senior Brass Section.

Well done all of you!

* * * § * * *

Tysoe Country Florists

Christine and Lilian

Flowers for all Occasions

We Offer a Large Selection of:
Fresh Cut Flowers
Silk & Dried Flowers
Bouquets - Arrangements
Floral Tributes - Wreaths

Specialists in Wedding Flowers:
Bridal Bouquets
Reception Flowers
Church Flowers

Delivery Service to:
All Local Villages
All Local Undertakers

Tele & Fax No; 0295 680 707
Main Street, Tysoe, Warwicks
CV35 0SE

TELEFLORIST MEMBER

THE VILLAGE SHOP - HOOK NORTON
Suppliers of High Quality Goods
Grocery - Greengrocery
Wines - Spirits - Confectionery
Newspapers - Magazines - Cards
Flowers, Plants & Accessories
Video Rental - Calor Gas
OPEN Monday - Friday 7am-8pm
Saturday 7am-6pm
Sunday 8am-1pm

ADMARTON POST OFFICE & STORES & NEWSAGENTS

General Grocery, frozen food, THAYERS
Ice cream, confectionery, home-cooked ham.

Home delivery of newspapers & magazines.
Should you require a delivery please contact HELEN BUTLER at above or 'phone SWALCLIFFE (0295 78) 668.

9 - 1 2 - 5.30
(Mon /Tues/Thurs/Fri/Sat
9 - 12.30 (Wednesday)
10 - 12 noon (Sunday)



To: All Village Newsletter Editors

From: Mr Phil Hodgson, Divisional Director - Cherwell/West,
Social Services Department

1 April is All Fools' Day! It is also the day the government chose to begin a new era in community care. It is then that the legislation of the 1990 NHS and Community Care Act comes into being.

'Community Care' is about the provision of services through Social Services, the Health Authority, the Family Health Services Association. Independent and voluntary organisations, home help, day care, visits to the outpatients' department of the local hospital, the aids used by a disabled person, the support given to carers - all these kinds of issues are now covered under the blanket heading 'community care'.

We in Cherwell have been working very hard over the last two years to prepare for 1 April. As required by the government, we have produced a 'Community Care Plan' outlining the services available and how we are going to allocate some of the funds which we will have to implement the plan. A group of people from the organisations referred to earlier has been looking at how these plans will affect rural areas. You will have read in earlier articles how this group has established an information system in some of the villages in the area, some of you will have been in villages where there has been discussion about day care. This kind of work will continue.

1 April is the starting date - not everything is in place and no doubt as we go along we will find new things to plan for; the key philosophy of the Community Care legislation is that people will have more choice and easier access to the facilities they need. Those will be important indicators in which to assess the success of the legislation.

The success of Community Care depends upon a partnership between the caring agencies, including the local community. It is early days yet but there are signs that this partnership is developing well. If you have any thoughts about your village and community care, then please contact the Rural Issues Group, c/o Banbury District Council for Voluntary Services, Suite 3, Borough House, Marlborough Road, Banbury, Oxon. OX16 8TH.

renfrey bovill

BUILDERS & RENOVATION SPECIALISTS

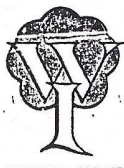
Alterations • Extensions • Conversions

Period Renovations A Speciality

Plans Prepared And Submitted

Phone Swalcliffe 609 • Quotations Free

Proprietor: David Bovill



News and Information



The March meeting of Sibford W.I. met to hear about Yorkshire, but the speaker was unable to come and Mr Alan Jarvis gave an illuminating talk on one of his hobbies - Wood Turning. This proved to be most interesting and thanks were expressed to Mr Jarvis for stepping into the breach.

The competition for an article in wood was won by Mrs Mills, 2nd Mrs Puddle, 3rd Mrs Conway. Mrs Baggaley gave a vote of thanks and teas were served by Mrs Webb and Miss Bennet.

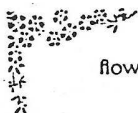
Next month Dr Sue Heath will be speaking about *Hormone Replacement Therapy*. This should be of considerable interest, and will be an open meeting when anyone interested may pay 50p and join us as a visitor. A competition for Six Spring Blooms will take place - and who better to judge it? The meeting will be at 2.00pm on Tuesday April 12th in the Village Hall.

* * * S * * *

SIBFORD GOWER ENDOWED PRIMARY SCHOOL

Years 5 & 6 have been visiting The Warriner School as part of their Design Technology Course. They have designed & constructed fabulous kites which are soon to be launched on maiden flights. Keep your eyes peeled and directed upwards as you pass through the village in the coming week and you may be fortunate enough to witness this colourful event!

* * * S * * *



flowers for all occasions

Petals

43a Market Place, Banbury, Oxon. OX16 8NW
(Next to Laura Ashley)
Telephone: (0295) 255450



.....
CAROL & JOHN
extend a warm welcome to all at
The Wykeham Arms
Feel at home the minute you step
through the door. Hot & Cold
Bar Snacks, also a full
A LA CARTE RESTAURANT
Come as a Guest and leave as a Friend
Sibford Gower, Nr. Banbury, Oxon.
Tel.: 0295 78 351
.....

CHILDREN'S SCENE

'NAME THESE BIRDS'

A competition for children under 12 years old.

The stars (*) represent missing letters. Fill these in, using the clues. If your answers are correct, the first vertical column will spell out a well-known place.

NAME of BIRD	CLUE
* * * R * * * G	A heavenly body & a heather
I * * *	Some of these are sacred
* L * * * B * * *	A rearranged BALD BRICK
* * Y * * * C * * *	A spider is also this
* * * R * *	Catches fish with its feet
R * * * I * *	Rearrange DIN GREW
* U * * * C *	A hedgerow NON DUCK
* * * N * *	This one eats a lot
O * *	Are you as wise as him?
* A * * * I *	He has a wobbly end
* * G * *	A first-class Scout
* * * I *	The Christmas Card bird

When you have finished, send or bring your answers, in your own handwriting, including your name, address and date of birth to:

Ray Henbrey (Asst Editor), Virginia Cottage,
Hook Norton Rd, Sibford Ferris.

Last date for entries: 13 April.

If your answers are correct, your name will be published in next month's *Scene*. Also, two small prizes will be awarded, based on age & neatness.

[Thanks are due to Ina Lamb, who compiled & submitted a puzzle on which the above competition is based,]

* * * * *

*** DECOR SERVICE ***

Painting, Papering, Tiling etc
Interior & Exterior
15 Years Experience in Sibford

Contact
BRUCE HORN
on Swalcliffe (0295 78) 658

*** J W BAKER ***

Electrical Repairs & Installation
Domestic - Agricultural
Industrial

Work Undertaken Promptly
Tel: Swalcliffe (0295 78) 8306

CHURCH SERVICES

Society of Friends	Sunday at 10.30 am
Methodist	Sunday at 11.00 am
Roman Catholic Mass (Hook Norton)	Sunday at 11.00 am
(Brailes)	Sunday at 11.30 am
Baptist (Hook Norton)	Sunday at 10.30 am

Church of England, Holy Trinity, Sibford Gower

1 April	7.30am	Holy Communion
4 "	10.00am	Service for Palm Sunday at Swalcliffe
5 "	10.00am	Holy Communion
6 "	7.30am	Holy Communion
8 "	8.00pm	Maundy Thursday Service at Epwell
9 "	1.30pm	Good Friday Service at Tadmarton
10 "	11.00pm	Easter Midnight Service
11 "	10.00am	Easter Family Communion
18 "	10.00am	Low Sunday Service at Epwell
25 "	8.00am	Holy Communion

5 - 10 April 7.30am Morning Prayer (Matins)
5.30pm Evensong (said)

† † † † * † † † †

AUSTERITY LUNCHES

With thanks to those who have shared soup & bread on the first Tuesday of each month and contributed so generously to the collection, we have been able to send just over £100 so far to ORFAN, for children in Romania.

We hope others will join us in the Friends Meeting House on 6 April & 4 May, any time between 12.30 & 2.00pm.

Margaret Le Mare

* * S * *

'SING & DANCE' EVENING at SWALCLIFFE VILLAGE HALL

Saturday 17 April 8.00 - 11.30pm

* Sing & Dance to the DIXIE BAND *

Singing for older people - Dancing for the younger

Tickets: £2 (over 16 years old) - £1 (under 16)

* * Bar and Refreshments * *

Proceeds in aid of Swalcliffe Church

For more information phone Jean Haynes on Swalcliffe 548

SIBFORD BUS SERVICES

1. SIBFORD GOWER TOWN ESTATES CHARITY

Free Bus Service for Sibford Gower and Burdrop Residents

			Depart	Return
Friday	9 & 23 April	to Banbury	10.00am	12.00noon
Wednesday	14 & 28 April	to Chippy	11.00am	1.00pm

The pick-up points are:

<u>Banbury Bus</u>	<u>Chippy Bus</u>
Village Hall	Village Hall
Cross Roads	High Meadow
High Meadow	Cross Roads
	The Colony

2. REGULAR BUS SERVICE - BRAILES COACHES.

Brailes - Banbury - amendments - Monday, Wednesday, Friday ONLY

Pick up at Sibford Gower..... 1.15pm

Return from Banbury Bus Station... 2.45pm

Shipston - Banbury - Monday & Saturday

Pick up at Sibford Gower..... 9.50am

Return from Banbury Bus Station... 12.15pm

3. REGULAR BUS SERVICE - MIDLAND RED. 490 Sibford - Banbury

Monday - Saturday only

Outward from Sibford Gower Ferris

7.30am 7.32am

9.05am 9.07am

11.55am 11.53am

3.00pm* 2.53pm*

5.30pm 5.28pm

*=Sat & School Hols only

Return from Banbury Bus Station

11.30am

2.30pm

5.05pm

6.05pm

4. REVISED SERVICE - MIDLAND RED. X60 Hook Norton-Banbury-Sibford-Tuesdays Only

-Shipston-Stratford-Coventry

	Outward	Return*	
Sibford Ferris	09.39am	2.15pm	* All return times are one hour later during School Holidays
Sibford Gower	09.41	2.13	
Shipston	09.55	1.59	
Stratford	10.25	1.30	
Coventry	10.55am	1.00pm	

* * * * *

WEEKLY EVENTS

Guides	Hook Norton	Monday	evening
Youth Club	Village Hall	Monday	7.00 - 9.00pm
Yoga	Friends School	Monday	7.15 - 9.15pm
Mobile Shop		Tuesday	10.00am - 4.00pm
Brownies	Village Hall	Tuesday	5.15 - 6.45pm
Folk Dancing	Village Hall	Tuesday	8.00 pm
Beavers	Village Hall	Wednesday	5.15 - 6.30pm
Badminton	Village Hall	Wednesday	8.00pm
Badminton	Friends School	Wednesday	7.30 - 9.30pm
Mums & Toddlers	Orchard Close	Wednesday	10.30am - 12noon
Mobile Fish & Chips		Thursday	
Cricket Club Nets	Friends School	Friday	6.00 - 7.15pm
Cub Scouts	Village Hall	Friday	6.00pm
Scouts	Village Hall	Friday	following Cubs
Playgroup	Village Hall	Mon,Wed,Fri	9.00am - 12noon
Sibford Sports Club	Friends School (Phone 380 or 8492 for details)		

* * * § * * *

FORTHCOMING EVENTS

DIARIST - Norman Nash (Tel 275)

6 May	Thursday	County Council Elections
9 May	Sunday	Horti Society Coach Outing to Malvern Show
22 May	Saturday	Friends of Sibford School Auction
29/31 May	Sat/Mon	Tadmarton Church Weekend - Victorian Festival
5 June	Saturday	BBOnt Fun Tea Party - Woodway Farm, S.Ferris
12 June	Saturday	Sibford Church Garden Party-Red House, Burdrop
19 June	Saturday	Conservatives Summer Event
19 June	Saturday	Swalcliffe Organ Recital - 7.30pm
20 June	Sunday	Temple Close - Mr & Mrs Jones' Garden Party
10 July	Saturday	Swalcliffe Village Fete - 2.30-5.30pm
18 July	Sunday	Sibford Gower Open Gardens
18 July	Sunday	Tadmarton Family Sports Day
21 July	Wednesday	Swalcliffe - Penarth Male Voice Choir - 7.30pm
21 August	Saturday	Horticultural Society 1993 Annual Show
10 October	Sunday	Epwell Harvest Service
30 October	Saturday	Epwell Church Autumn Fair
27 November	Saturday	Conservatives Hollywood/Broadway Musical Evening

Secretaries - Please keep *Sibford Scene* (or Norman) informed of new or changed 'Weekly Events' or 'Forthcoming Events',

----- § -----
LOCAL CORRESPONDENT to BANBURY GUARDIAN - Sheila Baseby (Tel 544)

Copy for Guardian by MONDAY please

LOCAL CHERWELL DISTRICT COUNCILLOR - David Green (Tel 444)

CALENDAR for APRIL 1993

Friday	2nd	Sibford Gower Parish Council Meeting - see p 15
Saturday	3rd	Church Spring Cleaning - see p 1
Saturday	3rd	Scouts Paper & ALUMINIUM Can Collection
Saturday	3rd	Conservatives 40's Dance - see p 10
Tuesday	6th	Austerity Lunch - see p 21
Tuesday	6th	Friendship Club - see p 11
Wednesday	7th	Fielding Day Centre - 12.15 - 3.00pm
Wednesday	7th	Mobile Library in Sibfords & Burdrop (2.25 - 4.20pm)
Saturday	10th	'Seconds' Sale - for Village Hall funds - see p 9
Tuesday	13th	WI Meeting - see p 19
Wednesday	14th	Healthy Lifestyles Group - see p 7
Wednesday	14th	Horti Society Meeting - see p 8
Saturday	17th	Rubbish Skip in Gower - see p 15
Saturday	17th	Swalcliffe 'Sing & Dance' - see p 21
Tuesday	20th	Friendship Club - see p 11
Tuesday	20th	LED Club - see p 4
Tuesday	20th	Sibford Ferris Annual Parish Meeting - see p 2
TUESDAY	20TH	DEADLINE for SIBFORD SCENE CONTRIBUTIONS - see p 7
Wednesday	21st	Fielding Day Centre - 12.15 - 3.00pm
Wednesday	21st	Mobile Library in Sibfords & Burdrop (2.25 - 4.20pm)
Thursday	22nd	Sibford Gower Annual Parish Meeting - see p 15
Wednesday	28th	Healthy Lifestyles Group - see p 7

CALENDAR for MAY 1993 (part)

Saturday	1st	Scouts Paper & ALUMINIUM Can Collection
Tuesday	4th	Austerity Lunch - see p 21
Tuesday	4th	Friendship Club - see p 11
Wednesday	5th	Fielding Day Centre - 12.15 - 3.00pm
Wednesday	5th	Mobile Library in Sibfords & Burdrop (2.25 - 4.20pm)
Thursday	6th	County Council Elections

* SIBFORD SCENE *

Retiring Editor - Barry Davies, Stonecutters Cottage, Bonds End Lane,
Sibford Gower (Tele: 291)

Asst Editor - Ray Henbrey (8265) Treasurer - Timothy Wimbush (555)

Advertising Secretary - Frank Stevenson (612)

Cost of Adverts: personal £1.00, larger £2.00, half page: £6.00.

Display Advertising: small £15.00 per year, larger - ask Advert. Sec.

Loose Leaf Insertions: £10 for distribution (to approx 400 households)

COPY for MAY to RETIRING EDITOR or ASST EDITOR by TUESDAY 20 APRIL

(see page 7 for details)

