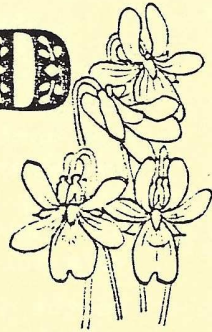


# SIBFORD SCENE



NO. 164  
MARCH 1993

\* ANOTHER \*  
\* SIBFORD CRICKETING STAR \*  
(Are you there Ted Dexter?)

Seventeen year old *SIMON O'NEILL* has become the second successive Sibford cricketer to win the Peter Joyner Trophy, awarded to the best young cricketer in the Benbury and District League. He follows in the footsteps of Ian Gilbert who won the trophy in 1991. Simon's batting, bowling and fielding were a revelation throughout the season and, having moved to the village only in early 1992, he has been an invaluable asset and an excellent team member - many congratulations.

*The Boundary Man*

\* \* S \* \*

## LENTEN HOUSE GROUPS

As is usual in Lent, Christians have the opportunity to reflect upon elements of their life. This can be done alone of course: but we offer all Christians the chance to do it with others. We shall meet on **Wednesday 3rd March** and on the four following Wednesdays. The meetings will be from 8.00 - 9.30pm, and the first one will be at The Rectory. I stress that **ANYONE** will be welcome. Please let me know if you intend to come and I will get the necessary papers to you.

*Timothy Wimbush (555)*

\* \* \* S \* \*

## SIBFORD FERRIS PLAYAREA GROUP

JUMBLE SALE - Saturday 6 March 2.00pm  
in Sarah Randall's garage at  
Home Close, Main St, Sibford Ferris.

If you have any jumble, bric-a-brac, etc, for collection  
please phone Joanna Gilkes on 8190. *Thank You.*

# SIBFORD CRICKET CLUB

*Another year - and season beckons - with hopes high.*

Unfortunately, the Club's team in the Anthony Nolan Bone Marrow Test Match Trivia Quiz - Peter Handley, Peter Randall, Ron Morbey and David Bennett - having scored an impressive win over Chipping Norton C.C. in the previous round, were finally eliminated in a close encounter with Worcester Nomads C.C. Nevertheless, through various means the Cricket Club were able to send a cheque for £135.00 to the Trust.

In the interests of good community spirit, the Cricket Club, notably through David Pratt, are working with Sibford School to improve the quality of the cricket square and its immediate surrounds. Investment in people, equipment and materials will in time give both schoolchildren and villagers the opportunity to play on a first class facility enjoying the noble art amid fine rural surroundings. *The Boundary Man*

**DON'T FORGET - Cricket Club AGM - 7.30pm - 1st March**  
Friends School Library - New Members Welcome to Attend.

\* \* \* S \* \* \*

## SIBFORD TABLE TENNIS CLUB

This year the club has four teams playing in the Banbury & District Table Tennis League.

The 'A' team, led by Jason Tustain, is doing well in the 1st Division, while Allister Wealsby, in the 'B' team playing in the 3rd Division, has a very good individual record so far this season.

The 'D' team (Arnold Lamb, Matthew & David Simms) has reached the last eight in the Handicap Tournament. The 'C' team, in which George Hall has had most success, is hoping for a better second half to the season!

### SIBFORD FERRIS POST OFFICE, STORES

Tele: Swalcliffe (029578) 795

Opening Hours: (NOW OPEN AT 8.00AM)

Monday, Tuesday, Wednesday, Friday

8.00am - 1.00pm

2.00pm - 6.00pm

Thursday, Saturday

8.00am - 1.00pm

Sunday

11.00am - 12.30pm

Groceries, Greengrocery, Stationery,

Confectionery, Cigarettes,

Wines & Spirits.

We can deliver if required.

### STUART & JOYCE

welcome you at

'THE GATE HANGS HIGH'

Hook Norton

Traditional Ales in our friendly pub  
with excellent food available  
in the recently extended restaurant.

Evening Bookings Advisable

Telephone: 0608 737387

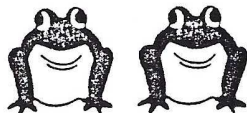
Open Seven Days per Week.

Bar only on Sunday evenings.

"The Gate Hangs High & Hinders None.

Refresh & Pay and Travel On."

## NATURE NOTES



*Jan 26th.* January is mating time for Foxes and those who sleep with an open window, like us, have been disturbed by their sharp triple bark and husky yelp recently.

*Jan 31st.* I was very pleased to hear that a Lesser Spotted Woodpecker was seen in the Ferris this morning. It must be about twelve years since two of these little Woodpeckers (they are about the same size as a Sparrow) paid a brief visit to our garden. I remember that in the early forties there were two Lesser Spotted Woodpecker nests in the Ferris, both in holes in fruit trees and a little more recently I believe that one nested in a Plum or Damson tree in a Sibford Gower garden. They would seem to favour fruit trees as nesting sites or is it a coincidence?

*Feb 10th.* On investigation I found that the splashings in our garden pond were caused by pairing Frogs but I cannot see any frog spawn yet.

*Feb 11th.* Amongst some bags of leaves I came across a lively little Frog that was hardly any bigger than it was when it left the pond after metamorphosis. I wonder how long they take to grow up.

*Feb 12th.* More Blackcaps have tended to winter in this country in recent years. All the ones that I have seen have been males until today when I spotted a female feeding on Holly berries.

*Feb 13th.* The female Blackcap has been a frequent visitor to our birdtable today with, at times, a male hopping about below collecting the crumbs. I think that the female may be an early migrant as I feel that, had such a bold bird been wintering in the area, it would have become used to birdtables and not spent time yesterday feeding on less nutritious Holly berries.



### NEED HELP WITH YOUR HORSE?

An experienced rider available to exercise horses  
most days of the week. NO CHARGE.

Height 5'11" Weight 11 stone

Tony Skowronski, Jasmine Cottage, Burdrop.

Phone No: Swalcliffe 490

LEO  
CLUB



Ladies  
Evening  
Out

At the February meeting at Rosalind Pearlman's, members were treated to a fascinating talk on the history and theory of reflexology by Elizabeth Webber, followed by a practical demonstration, for which Ann Spicer volunteered to put her best foot forward. The evening ended with welcome refreshments provided by Rosalind.

The next meeting, at 8pm on 16 March, will be at the home of Glennis Hutchinson, when our hostess will introduce a tape recording of reminiscences by a nonagenarian lady - 'Early Memories of Life in East Suffolk'.

- - - s - - -



+ + + + + + + + +  
+ TO +  
+ ADVERTISE +  
+ in the +  
+ SIBFORD SCENE +  
+ CONTACT +  
+ Frank Stevenson +  
+ Swalcliffe 612 +  
+ + + + + + + + +



*Elizabeth Webber* A.M.A.R.  
REFLEXOLOGIST

Yew Tree House  
Sibford Gower  
Banbury  
Oxon OX15 5RT

Telephone:  
0295 788101

The ancient healing art of Reflexology is a study of the reflexes of the feet corresponding to every part of the body. Working on these reflexes relaxes tension and helps the body to seek its own equilibrium.

A reflexologist uses hands only to apply gentle pressure to the feet. Sensitive, trained hands can detect tiny deposits and tensions and, by removing these obstructions, help to improve circulation and restore the free flow of energy to the body.

A TOAST TO OUR ADVERTISING DEPARTMENT  
(and to our advertisers - God bless 'em)



In last month's Scene there was a brief, dismissive one liner about our Advertising Department which is rather surprising considering it is responsible for not only one sixth of our publication but even more importantly, nearly one third of our income! It was not always so. Long long ago before the age of "once upon a time" the editor himself was in charge - pause for sighs of "goodness you have no need to tell us - we know!!" In those days we were nobly supported by eight local advertisers neatly segregated in what we called, for want of a better name, "box advertisements".

It was a start but realising the editor's shortcomings we advertised, ourselves, for an advertising secretary to expand that side of the magazine and to be more assiduous in the collection of the income. Elaine Hutchinson answered the call and, like all volunteers the world over, set about transferring both the number and the quality by casting her net farther afield. When she left the district, Elaine handed over to Muriel Chandler who maintained the advancement with gusto until she retired last year. As though we had been waiting in the wings for his entrance Frank Stevenson then burst upon "the Scene" with so many new ideas that the whole of the Sibford Scene's six storey office block, situated on Lamb's Pond, Blue Tit Wharf, was pulsating with renewed enthusiasm. Within a couple of months advertising was on a new footing and income had trebled (mainly because of the "Foot in the door" system that Frank employed.) He was out and about in his motorcar chasing, persuading and collecting as well as recruiting new advertisers.

Like all experienced business men Frank has identifiable objectives which he lists as follows:

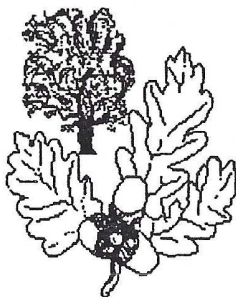
- (1) Not more than one sixth to one fifth of the Scene should be advertisements.
- (2) They should produce an income of approximately one third of production costs.
- (3) They should provide value for money by constantly reminding our readers that they can help by supporting our advertisers.
- (4) They should be attractive in lay-out.
- (5) They should be clear in intent.
- (6) They, in themselves, should be a valuable source of information to our readers as to where they can obtain a reliable local service.
- (7) They should be local and limited in size.

He is certainly realising these objectives. Frank has also introduced a loose leaflet distribution service.

The Sibford Scene, the Editor and the Village itself is well blessed in Frank and his enthusiasm and his determination.

Sibford

Endowed



Gower

Primary

### School

We went to Birmingham Museum. Everyone came in the old school. We saw planes, old fashioned cars and guns, engines and bikes. We went on Tuesday the 9th of February. We were allowed to touch and play with things and allowed to touch little buttons. We saw the fastest car in the world. We went to the shop to buy something and I bought a plane.

After lunch some went to the plane room, some went to the old fashioned cars room and some went to the engine room. When everyone came back we got on to the bus and went back to school.

*John Argyle*

\*\*\*\*\*

I went to The Warriner School and we did lots of sports. We did sit ups and star jumps and press up and squat thrusts. Before we did the exercises we had a photograph taken with a girl called Andrea Holmes who is a trampolinist.

*Georgia Berry*

\*\*\*\*\*



**ATTENTION**  
**! ATTENTION ALL CONTRIBUTORS!**

**DEADLINE for APRIL SIBFORD SCENE**

ALL contributors are earnestly requested  
to provide their contributions  
for the April edition of the Sibford Scene  
\* by Thursday 18 March. \*

It might not be possible to include copy  
that arrives after that date.

S S S

**HEALTHY LIFESTYLES**

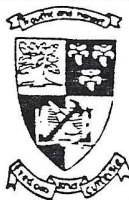
The Healthy Lifestyles Group continues to meet at  
Sibford Surgery from 1 - 2pm on alternate Wednesdays.  
Telephone 213 for further details of these sessions  
which are open to all of our patients.

\* \* \* S \* \* \*

**HELPLINES**  
**HELPLINES**

The Samaritans	Banbury 270000
Young People's Helpline	(0865) 310810
'Life' Pregnancy Counselling Service	Banbury 261257
Banbury Family Centre	Banbury 266358
Katherine House Counselling Service	Banbury 272216
Victim Support Schemes	(0869) 40751
Relate (Marriage Guidance)	Banbury 258141
Cancer Link	(0865) 257946
Banbury Community Transport Assoc.	Banbury 255863
Oxfordshire Rural Community Council	(0865) 512488

(Knowledge is power, and those who  
feel powerless, in need or fear can  
be helped by knowing who to contact  
for support and advice. If you know  
of a helpline not listed above,  
please submit the details to  
Banbury & District CVS.)



**SIBFORD  
SCHOOL**

Sibford Ferris,  
Banbury,  
Oxon. OX15 5QL  
Telephone: (0295) 78441  
Fax: (0295) 78 8444

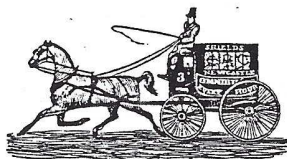
THE JUNIOR SCHOOL (7-11)  
Full preparation for Secondary Education

THE SENIOR SCHOOL (11-16)  
Broad Curriculum leading to GCSE

THE SIXTH FORM (16-18)  
Combination of the Diploma in Vocational  
Education and A level Studies

- \* Nationally known Dyslexic Department
- \* Small classes and highly supportive atmosphere
- \* New Sports, Music and Drama facilities
- \* Widespread use of Information Technology

# SIBFORD HORTICULTURAL SOCIETY



The February meeting included a fascinating demonstration of 'Instant Bonsai' - in half an hour Mike Thomas converted a straggly juniper into a delightful cascading work of art.

By a show of hands the members decided that the OUTING to the Malvern Show would be on SUNDAY 9 May. Please book your seat soon with Sheila Baseby (544) as a smaller coach will be used this year. **NON-MEMBERS ARE WELCOME TO JOIN US FOR THIS OUTING.** Tickets will be about .£8, including admission.

The next meeting, on 10 March, will include a talk on 'The Value of Plants' by blind nurseryman Frank Gardener from Hornton, whom you may have seen on television last year.

Non-members are invited to attend individual meetings (50p) to see if you like us. Alternatively, phone the Treasurer (525) for more details of our club.

## *Tysoe Country Florists*

Christine and Lilian

*Flowers for all Occasions*

We Offer a Large Selection of:

Fresh Cut Flowers

Silk & Dried Flowers

Bouquets - Arrangements

Floral Tributes - Wreaths

Specialists in Wedding Flowers:

Bridal Bouquets

Reception Flowers

Church Flowers

Delivery Service to:

All Local Villages

All Local Undertakers

Tele & Fax No: 0295 680 707

Main Street, Tysoe, Warwicks

CV35 0SE

TELEFLORIST MEMBER

THE VILLAGE SHOP - HOOK NORTON  
Suppliers of High Quality Goods

Grocery - Greengrocery

Wines - Spirits - Confectionery

Newspapers - Magazines - Cards

Flowers, Plants & Accessories

Video Rental - Calor Gas

OPEN Monday - Friday 7am-8pm

Saturday 7am-6pm

Sunday 8am-1pm

\*\*\*\*\*  
 \* TADMARTON POST OFFICE & STORES &  
 \* NEWSAGENTS  
 \*  
 \* General Grocery, frozen food, THAYERS  
 \* Ice cream, confectionery, home-cooked  
 \* ham.  
 \*  
 \* Home delivery of newspapers & magazines.  
 \* Should you require a delivery please  
 \* contact HELEN BUTLER at above or 'phone  
 \* SWALCLIFFE (0295 78) 668.  
 \*  
 \* 9 - 1 2 - 5.30  
 \* (Mon /Tues/Thurs/Fri/Sat  
 \* 9 - 12.30 (Wednesday)  
 \* 10 - 12 noon (Sunday)  
 \*  
 \* \*\*\*\*\*





A NEW APPEAL  
"OWZISS!!"



The brown envelope which has just dropped onto the carpet at your feet is NOT

- (1) A Time Share of Golden Opportunity.
- (2) Your passport to a Free Motorcar.
- (3) The subscription to 1 year's Readers Digest.

But it is:-

An aid to assist you in what we hope will be a donation to the production costs of the Scene. We ask that you consider a minimum subscription of £2 per household, yet at the same time we realise tht many may wish to give rather more and this is welcome to counterbalance some homes who feel they cannot help - (or forget - shame on you!). Please pick up the envelope NOW rummage in your pocket, your handbag, the children's piggy bank or the jam jar in which you keep George's milk money. Take out the coins. Fill the envelope, seal it and either pop it on the mantelpiece in front of the clock or on the silver salver on the hall table.

When next you go out please post it in one of the convenient nearby letter boxes listed below or in the collecting box at (1) the village shop in the Ferris (2) at the Surgery in Burdrop.

Thankyou all. We shall publish the extent of your generosity in April so be quick - DO IT NOW or TOMORROW at the latest!

The Colony  
Barley Close  
Sycamore Close  
Main St.  
Bodsend Lane  
Pond End  
Backside Lane  
High Meadow  
School/Church area  
Burdrop

Cotswold Close  
Sibford Ferris

Roger No.6.  
Petra No.2.  
Jean No. 3.  
Mollie, The Old Post Office.  
Editor, Stonecutter's Cottage.  
Jean, Wittsend.  
Kathleen, Cels Field.  
Ann No.7.  
Erica, The Rectory.  
Margaret, Westways.  
the Friths, Barn Close.  
Kathleen No. 3.  
Jim, Westtown Cottage, Woodway  
Road.

\* SEGA MASTER SYSTEM \*  
FOR SALE - with 3 GAMES & LIGHT PHASER - BOXED  
Phone: Swalcliffe 555 to discuss price

LETTERS TO



THE EDITOR

Telephone: 029578 275  
Facsimile: 029578 8561

The Red House  
Burdrop  
Sibford Gower

January 30, 1993

Dear Barry

I have recently telephoned most of the people who are responsible for organising events in the Sibfords, Epwell, Swalcliffe and Tadmarton and the result is a larger list of forthcoming events than we had in last months "Scene".

Just as a reminder, the object of the exercise is to try and ensure that important local events do not clash one with another. This is particularly important where the organisers hope to have support from all the four villages. I would therefore make a plea that I am telephoned in advance of final decisions being made on dates- I will then tell you if someone else has anything planned for that day.

Yours sincerely

Norman Nash

\* \* \* S \* \* \*

20 Ferndale Road  
Balsall Common

Enclosed P.O and Stamps  
for Sibford Scene.

We do enjoy it so  
much.

What a surprise  
when we looked  
inside.

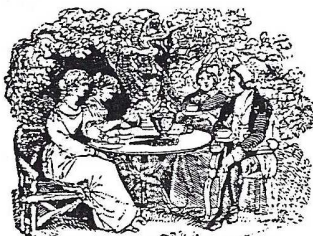
The Video is  
lovely!

Thank you all so  
much.

Mary Wyatt.

*[It is always heartening to hear from readers who have moved away from The Sibfords but who still appreciate receiving 'news from home', Ed]*

FRIENDSHIP  
CLUB  
DIARY



TUESDAY 2 MAR - Afternoon at Mrs Hucking's Flat  
in Sibford Gower - 2.00pm.

TUESDAY 16 MAR - Outing to Snowhill for lunch.

A. L. B.

flowers for all occasions

*Petals*

43a Market Place, Banbury, Oxon. OX16 8NW  
(Next to Laura Ashley)  
Telephone: (0295) 255450



CAROL & JOHN

extend a warm welcome to all at

*The Wykeham Arms*

Feel at home the minute you step  
through the door. Hot & Cold

Bar Snacks, also a full

A LA CARTE RESTAURANT

Come as a Guest and leave as a Friend

Sibford Gower, Nr. Banbury, Oxon.

Tel.: 0295 78 351

**HOOK NORTON WINES**

We sell many interesting wines. For  
informative list and friendly advice  
contact: BRENDAN DUBOCK

*Bardfield, Bourne Lane, Hook Norton,  
Banbury, Oxon. OX15 5PF.*  
RING: 0608 737502

**GENTLE YOGA  
FOR EVERYONE**

At Sibford School  
Sports Hall

Mondays  
7.15pm - 9.15pm

For Details & Enrolment  
Telephone

**ELAINE MEEK**  
(0295) 730289



**The Firs Garage**

- MOT TEST CENTRE
- CAR BODY REPAIRS
- ACCIDENT REPAIRS
- SERVICE & PARTS FOR ALL  
MAKES OF CARS

DAIHATSU CAR &  
FOUR WHEEL DRIVE  
DEALER



Excellent After Sales Service  
by Family Run Business

TEL: (0608) 737349

HOOK NORTON, BANBURY, OXON

**Est since 1960**

OPEN 8.00 AM - 6.00 PM MON - FRI  
SAT 8.00 - 5.00

**DAIHATSU**

Quest financial services  
INDEPENDENT ADVICE

**VAUGHAN ELLIS**

Partner

Market Place  
Chipping Norton  
Oxon. OX7 5NA

Tel: 0608 644575



The *Sibford Scene* is indebted to the *Oxford University Press* for this four-page extract from their 1932 publication, '*Frank Lascelles - Our Modern Orpheus*', which has recently been sent to us by Mary Wyatt.

Other extracts are planned for future issues of the *Scene*, as the book seems to be at the very heart of 'The Sibbards' and so that villagers who have recently moved into the area may learn what Sibfordians already know.

\* \* \* § \* \* \*

### 'MÄASTER FRANK'

By RÉNÉ JUTA

IN Domesday Book his village is mentioned—really two villages—The Sibbards . . . now Sibford Gower and Sibford Ferris. They are separated by steep green fields and hedges of black-thorn, and they lie high on the edges of the Cotswolds. Writing, as I am, by accident, from America, I think that, should any one here ask me what is England, I would say: 'Oh, Sibbard is England.' It is absolutely England. There is the narrow straight Roman road to the north, Broughton Castle to the south, to the east is Edgehills and the Avon, to the west, Rollright and its Druid Circle; and if you walk through the wet grass of Frank Lascelles' apple orchard, and look far over Evesham vale and distant hills, the highest, palest hill is Bredon. And the Pageant of England is in Sibford; it is lived day by day by the inhabitants, and Mäaster Frank, whom they have known all his life, is the Pageant Master.

Mister Bodfish, the gardener, remembers how his grand-dad told him, that his great-grand-dad was 'a shoeing in the forge' when a gentleman on a white horse, riding ahead of some others, asked him the way to Edgehills—'they waas a-coming from Aaxford', so he said, 'and he had a white feather in his hat'. Mister Bodfish thinks it was the King; others say it was Prince Rupert. The village still argues this point, over the fire, at the Wykeham Arms that is in the narrow lane leading past Mäaster Frank's 'Cottage'.

Frank Lascelles spent his boyhood in Sibford Gower—indeed, he was born in the long house opposite the 'Slat House'—the

oldest house in the village. His father was a scholar, with an ancestry of Culpepers, Fairfaxes, and Howes, and his mother was what some mothers are to men—an ideal and a love. He has made for her, himself, in the little church, an opalescent alabaster memorial—a lady, among many pale roses. His old nurse lived in a little thatched cottage, with a rose-covered porch, and oak beams, and a dove-cot. He held her hand while she died, and she left him in her will her cottage. This was when he was at Oxford and running the Oxford University Dramatic Society there, with the Irvings and Dorothea Baird.

This cottage became home. He bought the old barn next door which had been part of a monastic Rest House—the monks still walk in procession for those who have eyes—and he bought the cottage next door, until there grew from all this thatch and stone and oak beamings a lovely rambling house in a garden of hollyhocks and lavender and roses. And as he owned the Lordship, the cottages became the Manor. But the Wykeham Arms is where it was, and across the grass lawn, past the pool where there are forget-me-nots, is the Friends' sleeping place. For the Sibbards are as a Mecca to the 'Friends'. At the Ferris there is a big Quaker school. Yet no one was startled or surprised at any new scene in this village pageant.

Frank Lascelles went to London after Oxford, and acted with Tree—he was the young 'Nero'; then he lived in London and made pageants, and worked sixteen hours a day; but week-ends saw him home, Mäaster Frank again, sleeping on the open porch under the red roses, or walking early in the Elizabethan rose garden, in his blue painting-smock or in the silk dressing-gown made for him by a Lady's own fingers, and padded and interlined by her with all the sweet herbs mentioned by Francis Bacon in his essay on Gardens; or he would drive wildly round the countryside in his low Victorian carriage drawn by two cream-coloured ponies—but, then, he was also Nero, driving a Roman chariot along the narrow Roman road where we would go black-berrying on autumn days.

He *lived* his pageant; and his organizing mind was inspired and refreshed by constant activity.

One morning we would paint a new sign-board for the 'Arms'. Lunch was late, the entire household and servants assisting the

artist—like a rural Medici garden: we painted William of Wykeham in reds and yellows—his fingers up in blessing. What a to-do! Should the Bishop be blessing all 'them drunks acooming in!' Better that he should bless the passers-by. It was a diplomatic point and settled by turning the new sign-board round—the Bishop blessed the countryside. But lunch was very late.

Another day there would be a picnic at the Traitors' Ford and 'a-primrosing' in Whichford Woods, with half the village children to gather; or there was tea with the old Marquis in his beautiful pale-bricked Elizabethan house, Compton Wynnates, with its exquisite twisted chimney-pots, magnolias and fuchsia on its walls—and the charming host showing his new lavender garden which was once the moat. And the guests would all drive home, past the scented bean-fields and the heavy elder-flower hedges to a 'dress up' dinner round the gate-legged table, with roses in golden bowls, a silver ship sailing among them, copy of Van Riebeeck's Ship, a souvenir of the African Pageant: the big picture of the melancholy King Charles hanging from the oak screen; village boys whistling down the lane, a moon coming up over the larches and the distant stone and slate roofs of Sibford Ferris.

Afterwards, in the big black-beamed studio, some one would play the organ, and some one would sing from the minstrel gallery King Charles's own song, written in 1644 from Oxford for Henrietta Maria; or Francis (to his particular friends) would read Swinburne aloud, from the low settle seats round the chimney fire. Suddenly, through the big ever-open door, headed by Mark, the chimney sweep, the villagers arrived, trooping in; Mark carrying a lanthorn; Mister Bodfish in a train of red velvet; Joseph, the postman, as an ancient Greek; Thomas, the footman, in white robe and fair ringlets; Ewart, the page-boy, dressed as Puck; David, the garden boy, with a laurel wreath round his Titian hair. They did a scene from Shakespeare. It was like an English Brenghel painting. Francis played with them. . . .

The half-remembered roles were padded with rare rustic wit and wisdom; gagging by Shakespeare's own people in Shakespeare's tongue.

Excellent mime. They acted in Oxford, in the gardens of New College, and in Winchester, and later journeyed round various counties—and Mark and his lanthorn saw the sea for the first time in his nearly eighty years. It was the right thing done in the right way.

So was kept alive in these villages the English spirit of pageantry, jollity, and good cheer, a community of spirit and goods, sentiment and work—a maypole dance where all helped to weave the ribboned pattern—yet, withal, that curious English mysticism which finds worldly comfort in an outburst of very communal hymn-singing!

This English village where life goes on just as it has for centuries can accept, as 'Mäaster Frank', an enthusiast, who will forget to have his hair cut or buy a new hat, because he is so busy seeing the wonderful things he will do in the spring; but they know that perhaps he will read the lessons in church on Sunday, that he will play cricket with the village lads, tease a lass about a lad, sit by Mrs. Elley's side when she lay a-dying and, like Peer Gynt, tell her splendid stories of how he made Pageant with thousands and thousands of actors in nearly all the continents of the world.

\* \* \* \* § \* \* \*



**FUN TEA PARTY in aid of BBONT**  
(Berks, Bucks & Oxon Naturalists' Trust)

2.30pm Saturday 5 June at Woodway Farm, Sibford Ferris

Full details in a later edition of *Sibford Scene*

**PLEASE MAKE A NOTE in your DIARY of this FORTHCOMING EVENT**

\* \* S \* \*

**Oddjob**

CARPENTRY PLUMBING ELECTRICS HOUSEHOLD REPAIRS

★ NO ODDJOB TOO SMALL  
FREE QUOTATION - NO OBLIGATION ★

TEL: 029578 468

OF 355

HUGO SEELY

STICKLEY'S HOUSE, SIBFORD GOWER, NR BANBURY, OXFORDSHIRE

**RALPH C. HOGGINS**

MIDDLE TYSOE

WARWICKSHIRE

CV35 0SE

TYSOE (0295 680) 281

SOLID FUELS & LOGS

ESSO BOTTLED GAS

GARDEN PEAT/COMPOST

GROW BAGS/SHARP SAND

etc.

**AGDON FARM**

Brailes,

Banbury OX15 5JJ

Tel: (060 885) 226



A warm welcome awaits all our guests. Our comfortable Cotswold stone farmhouse is set in 500 acres of mixed farming, in an unspoilt part of the countryside.

Accommodation with full English Breakfast.

TV room, separate diningroom. Central heating, guests' bathroom, pleasant rooms with tea/coffee facilities.

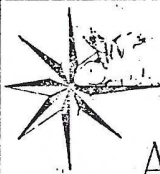
Contact: Mrs M. Cripps

STATE REGISTERED CHIROPODIST

CAROL CORDINGLEY M. CH. S.

*Home Visits By Appointment*

Tele: Banbury (0295) 720862



**ALAN HESSEL**  
**ANTIQUÉ RESTORATION**

The Old Town Workshop, Saint George's Close,  
Moreton-in-Marsh, Gloucestershire, GL56 0LP

Telephone: Moreton 50026

Evenings Brailes 404

**SPECIALIST CONSERVATION OF  
FINE ENGLISH PERIOD FURNITURE**



SIBFORD GOWER PARISH COUNCIL

At our recent Parish Council meeting the following was discussed. The diversion of footpath 23 is still in process. A diversion order is being drawn up followed by a formal period of objection of which the Council will be notified.

The pond is still overflowing, following the recent rain. It was decided to apply for a grant from the Parish Environmental Initiatives Scheme for some repairwork to be done. The fish would not be returned until the work had been carried out (sorry Editor).

The Council was assured by the Highways Department that the Cherry Tree on Burdrop Green would be pruned this spring.

The street signs have been ordered and should be installed within the next six weeks.

Following complaints about low water pressure in Main Street the Council has been informed by Thames Water that they consider that the current pressure is well above what they are obliged to supply. Should anyone have further problems please contact the Clerk (462).

The Clerk receives a monthly Newsletter from the Banbury District Carers. Anyone who is a carer and would like more information, advice, support on problems such as welfare benefit, relief care etc. contact the Clerk for a copy of this Newsletter.

The precept for 1993/1994 has been set at £1000.

The next Parish Council meeting is on Friday 2 April at 8.00pm.

The Annual Parish Meeting is on Thursday 22 April at 7.30pm in the Primary School Hall.

Petra Berry

\* \* \* S \* \*

A PLEA to ALL USERS of  
SIBFORD VILLAGE HALL

Recently some of the Village Hall lights have been left on overnight and during the day. This is very wasteful of energy and money.

Would ALL USERS of the Hall please check that ALL the normal 'up & down' light switches are SWITCHED OFF before leaving, including those controlling the KITCHEN light, the EXIT signs lights, the PORCH light, the CAR PARK light on a pole near the road and the CAR PARK FLOODLIGHTS on the end wall of the Hall.

However, the car park floodlights may be left on - BUT ONLY BY PRESSING IN THE TIMER SWITCH BUTTON INSIDE THE FRONT DOOR; these floodlights will then be switched off automatically after five minutes.

Your cooperation would be gratefully appreciated. *Thank You.*

\* \* \* S \* \*

## WHAT'S ON AT CHIPPING NORTON THEATRE

In last month's issue of the Scene I included in the programme -  
March 4th Alan Price - The Greatest Hits Tour.

Well, it certainly has been because shortly after I wrote the piece all seats had been sold. It would be wonderful for the Theatre if all its performances were as successful, but often there is a dearth of support and it annually suffers a deficit.

Your support would be a great help to the long term success of the Theatre. For £5 per annum (£3 OAP's) you can become a 'Friend Of The Theatre' and receive regular mailings, newsletters and invitations to special events.

For £12 per annum you become a Subscriber and, in addition to the benefit of being a Friend, you will also receive £1 off your ticket for all live shows. In addition, a big plus for film addicts, you can book up to 4 tickets one week in advance. Others have to queue and may be turned away if the film is a particularly successful one, as was the case with "Strictly Ballroom" in January for instance.

Turning to the programme for the next five weeks:-

### Theatre

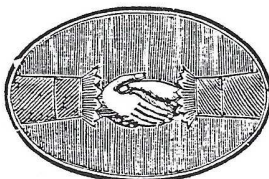
Frid 5 March	The Albion Band, in concert.	- 8.00 pm
Sat 6 March	The Coal Dust Affair - a comedy by Eugene Labiche.	- 8.00 pm
Frid 12 March	Green - a black comedy starring Nigel Pivaro ("Terry Duckworth" in ITV's "Coronation Street").	- 8.00 pm
Sat 13 March	Force 18 - an 18-piece Big Band playing jazz, rock, blues and latin plus special guest.	- 8.00 pm
Frid 19 March	Mrs Ceausescu's Organisation of Love - a play by Phil Smith.	- 8.00 pm
Sun 21 March	An Agreeable Blunder? presented by Janet Suzman and Bill Homewood - an anthology of poetry, prose and verse.	- 8.00 pm
Thur 25 March	Youth Theatre Presentation.	- 7.00 pm
Frid 26 March	Old Time Music Hall - dress to suit the occasion sing along to all your favourite songs.	- 2.30 & 8.00 pm
Frid 2 April	Grand Opening of No 7 Goddards Lane - with celebrity guests. Open house all afternoon - come and see The Theatre's new premises (more about this in the next Scene).	- From 12 noon
	Fairport "Acoustic" Convention - in concert.	- 8.00 pm

### Cinema

Sun 7 March for 3 days	Peter's Friends (15).	- 7.30 pm
Sun 14 March for 3 days	Husband and Wives (15).	- 7.30 pm
Sat 20 March & Mon 22 March	Casablanca (U) with Humphrey Bogart and Ingrid Bergman.	- 7.30 pm
Sat 27 March for 3 days	Home Alone 2 : Lost in New York (PG).	Sat/Sun 5.00 & 7.30 pm Mon - 7.30 pm only
Wed 31 March for 2 days	Time of the Gypsies (15) (Subtitles).	- 7.30 pm

Further information can be obtained from the Box Office 0608 642350  
Monday to Saturday 10.00 am - 6.00 pm.

**WELCOME  
TO  
SIBFORD**



**ALL  
NEWCOMERS**

If you have recently joined us and have not yet received a copy of the 'Welcome to Sibford' leaflet, please telephone Petra Berry on Swa. 462 (Gower or Burdrop) or Jane Holliday on Swa. 500 (Ferris) and a copy will be delivered to you. The information will help to make you feel at home - by acquainting you with the services, schools, churches, clubs and societies that are currently active in the villages.

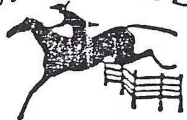
This month we say "**Welcome**" to the following newcomers:

- Steve Everett, who has moved from Guildford into Barley Close in the Gower. Steve works for the National Bus Co., situated on the campus of Warwick University. He enjoys walking and is a keen yachtsman.

- Alan & Judy Russett, who have moved into Backside Lane in the Gower, having previously lived in Tewkesbury. Alan works for the Lex Co. in High Wycombe and Judy is with a travel company in Birmingham.

\* \* \* § \* \* \*

**TURPINS LODGE**



**STABLES**

Indoor School Facilities  
Excellent Escorted Hacking  
All Ages Catered For  
Private & Group Tuition  
Full & Part Livery

Hook Norton (0608) 737033

**MOBILE SERVICING  
MOT REPAIRS & WELDING  
GARDEN AND DOMESTIC REPAIRS**

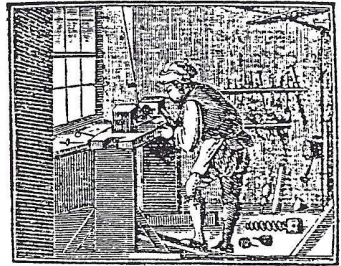
**triple  
"m"  
SERVICES**

TEL. SWAL 614

**FAIR RATES  
ALL WORK GUARANTEED**



## News and Information



W.I. members and visitors (including some gentlemen) listened to and saw memories of Mr John Dunstan's musical tour through China. We had a very interesting insight into the Chinese way of life not available to the average tourist.

Mrs Puddle's beautiful but ugly Chinese carving of an old man won the competition. Mrs Pearlman won the raffle and we all enjoyed Mrs Mills and Mrs Grasby's delicious tea.

Anyone who would like to sample our meetings and listen to our interesting speakers is welcome to pay 50p and come along as a visitor. You may enjoy your afternoon enough to want to join.

Tuesday March 9th at 2 pm in the Village Hall is when Mr Alan Jarvis will tell us about wood turning and the properties of different woods. The competition will be a small item made of wood - a box or carving perhaps.

- - S - -

LOST! - PROBABLY in BURDROP  
Saisho 'Walkman-type' Personal Radio  
If Found, Please Phone Swa. 763  
Geoff Higgins, Wyatt's Cottage

**\* DECOR SERVICE \***

Painting, Papering, Tiling etc  
Interior & Exterior  
15 Years Experience in Sibford

Contact  
**BRUCE HORN**  
on Swalcliffe (0295 78) 658

**\* J W BAKER \***

Electrical Repairs & Installation  
Domestic - Agricultural  
Industrial

Work Undertaken Promptly  
Tel: Swalcliffe (0295 78) 8306

## SIBFORDS SOCIETY

The newly formed SIBFORDS SOCIETY is planning it's first exciting project - a leaflet illustrating an historical walk through the villages.

We need your help to appreciate fully the Sibfords of today by sharing memories of years gone by. Do please come along and contribute your memories, anecdotes or simply your interest and enthusiasm to help us with this fascinating project.

Join us at the **MISSION HALL** on Friday March 12th at 8.00pm. Refreshments will be available.

-----s-----

A NURSERY RHYME GARDEN PARTY on SATURDAY 12TH JUNE  
Red House, Burdrop - Proceeds in aid of Church Funds.  
Many Attractions - Children's Fancy Dress Competition.

-----s-----

### NORTH OXFORDSHIRE CONSERVATIVE ASSOCIATION SIBFORDS & EPWELL BRANCH

For your diary:-

Thursday 11 March at 8.30.p.m, at Parsons Barn Farm, home of Sue and Robert Tompkins. All members are urged to attend.

Thursday 25 March at 7.30.p.m. for 8.0.p.m. Branch Dinner at The Gate Hangs High, Hook Norton. Tickets (£13.50) and menus will be sent to all subscribers.

Saturday 3 April at 7.30.p.m to midnight at The Village Hall. '40's Dance and Supper. (No reconstituted egg!!) Tickets (£8.50) from Robert Tompkins and Peter Baseby

Everyone welcome! Especially in your old W.W.2 uniform. However period dress is not obligatory.

Details of our Summer Event to be held on July 19 will be given later.

For tickets or other information telephone our Chairman, Mr. Robert Tompkins. 541 or Mr. Peter Baseby. 544 (Treasurer)

## SIBFORD BUS SERVICES

### 1. SIBFORD GOWER TOWN ESTATES CHARITY

Free Bus Service for Sibford Gower and Burdrop Residents

			Depart	Return
Wednesday	3 & 17 & 31 Mar	to Chippy	11.00am	1.00pm
Friday	12 & 26 Mar	to Banbury	10.00am	12.00noon
Friday	9 Apr	to Banbury	10.00am	12.00noon

The pick-up points are:

<u>Banbury Bus</u>	<u>Chippy Bus</u>
Village Hall	Village Hall
Cross Roads	High Meadow
High Meadow	Cross Roads
	The Colony

### 2. REGULAR BUS SERVICE - BRAILES COACHES.

Brailes - Banbury - amendments - Monday, Wednesday, Friday ONLY

Pick up at Sibford Gower..... 1.15pm

Return from Banbury Bus Station... 2.45pm

Shipston - Banbury - Monday & Saturday

Pick up at Sibford Gower..... 9.50am

Return from Banbury Bus Station... 12.15pm

### 3. REGULAR BUS SERVICE - MIDLAND RED. 480 Sibfords - Banbury

Monday - Saturday	Gower	Ferris	
	7.30am	7.32am	
	9.05am	9.07am	
	11.55am	11.53am	
	3.00pm*	2.53pm*	**=Sat & School Hols only
	5.30pm	5.28pm	

Return from Banbury Bus Station 11.30am

2.30pm

5.05pm

6.05pm

### 4. REVISED SERVICE - MIDLAND RED. X60 Hook Norton-Banbury-Sibfords- Tuesdays Only

	Outward	Return*	
Sibford Ferris	09.39am	2.15pm	* All return times
Sibford Gower	09.41	2.13	are one hour later
Shipston	09.55	1.59	during
Stratford	10.25	1.30	School Holidays
Coventry	10.55am	1.00pm	

## FORTHCOMING EVENTS

### DIARIST - Norman Nash (Tel 275)

3 April	Saturday	Conservatives 40's Dance - Village Hall
22 April	Thursday	Sibford Gower Annual Parish Meeting
9 May	Sunday	Horti Society Coach Outing to Malvern Show
22 May	Saturday	Friends of Sibford School Auction
29/31 May	Sat/Mon	Tadmorton Church Weekend - Victorian Festival
5 June	Saturday	BBONT Fun Tea Party - 2.30pm - Woodway Farm
12 June	Saturday	Sibford Church Garden Party - Red House, Burdrop
20 June	Sunday	Temple Close - Mr & Mrs Jones' Garden Party
18 July	Sunday	Sibford Gower Open Gardens
19 July	Monday	Conservatives Summer Event
21 August	Saturday	Horticultural Society 1993 Annual Show
29 August	Sunday	Epwell Village Fete (?)
10 October	Sunday	Epwell Harvest Service
30 October	Saturday	Epwell Church Autumn Fair
27 November	Saturday	Conservatives Hollywood/Broadway Musical Evening

Secretaries - Please keep *Sibford Scene* or *Norman* informed.

----- s -----  
LOCAL CORRESPONDENT to BANBURY GUARDIAN - Sheila Baseby (Tel 544)  
Copy for Guardian by MONDAY please

## CHURCH SERVICES

Society of Friends	Sunday at 10.30 am
Methodist	Sunday at 11.00 am
Roman Catholic Mass (Hook Norton)	Sunday at 11.00 am
(Brailles)	Sunday at 11.30 am
Baptist (Hook Norton)	Sunday at 10.30 am

Church of England, Holy Trinity, Sibford Gower

4 March	7.30am	Holy Communion
7 "	10.00am	Service at Tadmarton
11 "	7.30am	Holy Communion
14 "	10.00am	Holy Communion
18 "	7.30am	Holy Communion
21 "	10.00am	Family Service and Baptism
25 "	7.30am	Holy Communion
28 "	8.00am	Holy Communion
1 April	7.30am	Holy Communion
4 "	10.00am	Service for Palm Sunday at Swalcliffe

† † † † \* † † † †

### SIBFORD METHODIST CHURCH

The Church would like to thank all those people who so generously supported our Christmas Coffee morning. We would like to say "Thank You" to both those who gave items for sale on the stall and also those who dropped in for coffee and purchased them!

J.W.

† † \* † †

FOR A WIDE RANGE OF

**BEAUTIFUL FABRICS**

**CURTAINS & BLINDS**

PLEASE CONTACT-

~Ann Woolgrove~

~0295.78.8145~

## WEEKLY EVENTS

Guides	Hook Norton	Monday	evening
Youth Club	Village Hall	Monday	7.00 - 9.00pm
Yoga	Friends School	Monday	7.15 - 9.15pm
Mobile Shop		Tuesday	10.00am - 4.00pm
Brownies	Village Hall	Tuesday	5.15 - 6.45pm
Folk Dancing	Village Hall	Tuesday	8.00 pm
Beavers	Village Hall	Wednesday	5.15 - 6.30pm
Badminton	Village Hall	Wednesday	8.00pm
Badminton	Friends School	Wednesday	7.30 - 9.30pm
Mums & Toddlers	Orchard Close	Wednesday	10.30am - 12noon
Cricket Club Nets	Friends School	Thursday	6.00 - 7.15pm
Mobile Fish & Chips		Thursday	
Cub Scouts	Village Hall	Friday	6.00pm
Scouts	Village Hall	Friday	following Cubs
Playgroup	Village Hall	Mon, Wed, Fri	9.00am - 12noon
Sibford Sports Club	Friends School	(Phone 380 or 8492 for details)	

## CALENDAR for MARCH 1993

Monday	1st Cricket Club AGM-7.30pm - Friends School - see p 2
Tuesday	2nd Austerity Lunch - Friends Meeting House - 12.30-2.00pm
Tuesday	2nd Friendship Club - 2.00pm - Mrs Huckings - see p 11
Tuesday	2nd Sibford Ferris Parish Council Meeting - phone 8393
Wednesday	3rd Healthy Lifestyles Group - Surgery - 1.00pm - see p 7
Wednesday	3rd Lenten House Group - The Rectory - 8.00pm - see p 1
Saturday	6th Scouts Paper & ALUMINIUM Can Collection
Saturday	6th Ferris Playarea-Jumble Sale - Home Close 2pm - see p 1
Tuesday	9th WI Meeting - Village Hall - Alan Jarvis - see p 20
Wednesday	10th Mobile Library in Sibfords & Burdrop (2.25 - 4.20pm)
Wednesday	10th Horti Society Meeting - Village Hall 8pm - see p 8
Wednesday	10th Lenten House Group - see p 1
Thursday	11th Conservatives AGM - Parsons Barn Farm - see 21
Friday	12th Playgroup 50/50 Sale - phone 8506 or 8635
Friday	12th Sibfords Society Meeting - Mission Hall - see p 21
Saturday	13th Rubbish Skip in Gower
Tuesday	16th Friendship Club - Lunch at Snowhill - see p 11
Tuesday	16th LEO Club at Glennis Hutchinson's - see p 4
Wednesday	17th Healthy Lifestyles Group - Surgery - 1.00pm - see p 7
Wednesday	17th Lenten House Group - see p 1
THURSDAY	18TH DEADLINE for SIBFORD SCENE CONTRIBUTIONS - see p 7
Wednesday	24th Mobile Library in Sibfords & Burdrop (2.25 - 4.20pm)
Wednesday	24th Lenten House Group - see p 1
Thursday	25th Conservatives Branch Dinner - The Gate - see p 21
Wednesday	31st Healthy Lifestyles Group - Surgery - 1.00pm - see p 7
Wednesday	31st Lenten House Group - see p 1

## CALENDAR for APRIL 1993 (partial)

Friday	2nd Sibford Gower Parish Council Meeting - see p 17
Saturday	3rd Scouts Paper & ALUMINIUM Can Collection
Saturday	3rd Conservatives 40's Dance - Village Hall - see p 21
Tuesday	6th Austerity Lunch - Friends Meeting House - 12.30-2.00pm
Wednesday	7th Mobile Library in Sibfords & Burdrop (2.25 - 4.20pm)

## \* \* SIBFORD SCENE \* \*

EDITOR - POSITION STILL VACANT ! !  
Retiring Editor - Barry Davies, Stonecutters Cottage, Bonds End Lane, Sibford Gower (Tele: 291)  
Asst Editor - Ray Henbrey (8265) Treasurer - Timothy Wimbush (555)  
Advertising Secretary - Frank Stevenson (612)  
Cost of Adverts: personal £1.00, larger £2.00, half page £6.00.  
Display Advertising: small £15.00 per year, larger - ask Advert. Sec.  
Loose Leaf Insertions: £10 for distribution (to approx 400 households)

COPY for APRIL to RETIRING EDITOR or ASST EDITOR by THURSDAY 18 MARCH  
(See page 7 for details)