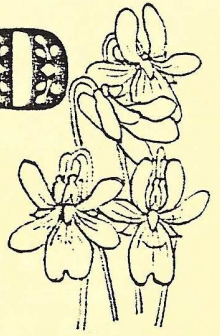


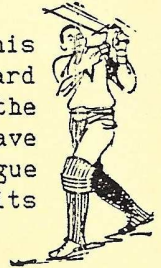
SIBFORD SCENE



NO. 154
MARCH 1992

Sibford Cricket Club OWZAT?

Congratulations to 19-year old Ian Gilbert on his success in winning the *PETE JOYNER TROPHY*, the award given to the best young cricketer (under 21) in the Banbury & District League. The village team may have lost out at the last hurdle in their bid for league honours, but this award reflects the quality of its 'stars of tomorrow'!



The son of the indefatigable Roger, the nephew of the ebullient Philip and the grandson of that ace arbiter Bert, Ian has brought increasing talent to his game and his powerful shoulders will no doubt be the bedrock of a Sibford side as it enters the 21st century!!

The Boundary Man

* S *

DON'T FORGET! Sibford Cricket Club AGM. 7.30 pm 2 March.
Friends School Library.. New members welcome to attend.

* S *



THE SIBFORD SHINDIG
SATURDAY JUNE 27th



The highlight of the Sibford Open Weekend, 'The Shindig', is sure to be the village event of 1992 and is not to be missed - licenced bar, pig roast and dancing to 60's rock'n'roll band 'The Real McCoy' live at Temple Mill. Tickets available now but strictly limited in number. £8.00 per person or £20.00 for a family ticket. Phone 780 now for details.

LEO
CLUB



Ladies
Evening
Out

There was a 'packed house' at the home of Greta Baadsgaard on 18th February to watch the video of local history which everyone much enjoyed. Many thanks to Greta for her hospitality.

The next meeting of Leo will be held on Tuesday 17th March at the home of Miriam Henbrey when we shall be seeing slides of America.



Sibford Village Hall

Advance Notice Thursday April 9th in Sibford Village Hall a Fashion Show. Tickets £1,00 each. More details in next month's Scene.

Note: If the Election is on 9th April, then the Fashion Show will be held at Sibford Gower Primary School.

SIBFORDS WEEKEND June 27th and 28th.

Don't forget this important Event. Look out for more details in the April Scene.

* * * * S * * * *

— — THE VILLAGE QUIZ — —

That much appreciated 'Sibford Night Out' of fierce competition will take place on Thursday 23 April.

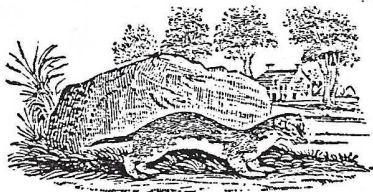
Further details in next month's Sibford Scene.

Nature Notes



Jan 25th; Looking back through past 'Nature Notes', I see that this is the third winter that we have had the Greenfinch with the tuft of feathers on its back (mentioned in last months notes) feeding at the bird table.

Feb 5th; The damage done to plants in our garden by the exceptionally cold night of Dec 12th, when the temperature went down to 12°F, is now becoming apparent. Tender shrubs, some of which had been taken into the cold greenhouse, and some plants in pots, have been the main sufferers.



Feb 9th; A Weasel, I think it was only one, moving very quickly, hunted up and down a hedge while several of us watched. It made me think back to pre-combine harvester days when our rickyards were full of cornricks. We would sometimes see Weasels moving swiftly along the sides of ricks, following the runs chewed through the sheaves by Rats and Mice. The Weasels must have helped control these vermin, although there were plenty left when we threshed, particularly in ricks not threshed until April or May.

Feb 10th; It was nice to see several Snipe, that we accidentally flushed from a small stream, go zig-zagging away, at great speed.

Feb 15th; Our bird table has been proof against Squirrels for several years, but today a particularly athletic one managed to jump from a Golden Cypress. After I had cut off the branch from which it jumped, it managed an even longer jump from a higher branch which I have also had to remove.

* * * * * S * * * * *

- - ATTENTION ALL GARDEN-LOVERS - -

Jerry Harpur, the world-renowned garden photographer, will give an illustrated talk on 'The Art of the Garden' on Friday 27 March at The Cardus School, Overthorpe Hall at 7.30 pm. Tickets £5, incl. cheese and wine. Order forms can be obtained from Miriam Henbrey, Virginia Cottage, Sibford Ferris (8265).

All proceeds will go to Katharine House Hospice.

Sibford Gower Endowed Primary School

Tree Planting Day

Last summer the school bonfire field was levelled and seeded. The old hedge was pulled up and new fences were put in where needed. Now it is February, the field is all grass and it needed some trees. The Friends School very kindly gave us thirty baby trees and we bought forty ourselves.



This meant we had enough trees for each family in school to have one each. Now that we had the trees, they still needed planting. We sent out a letter asking families to come to school and plant the trees on Saturday, 15th February. Lots of people came and 73 trees were planted along with 100 metres of hedging.

We would like to thank the Friends School for their kind gift and also everyone who came and planted a tree.

by Joe Perry aged 10 years

Congratulations to the members of our school netball team who played magnificently in the Warriner Partnership Netball Tournament and were only beaten in the final by Bloxham 'A' team 3 - 0.

Cake Day

On Wednesday ,
19th February,
Mrs Judd came to
school to demonstrate
how to ice children's
birthday cakes.
Lots of parents
came to watch and have
a go themselves.



Then we had a Generation Game.
The first test was to make a face out of cream.
Everyone was cheering for their
friends. The next challenge was
to make a frog out of fondant icing.
They all did very well. Lastly they had
to make a plait out of dough which looked easy,
but I'm sure it wasn't! It was all very
funny. At the end of the school day we had a
cake sale which raised £80 which will go
towards the Sports Pavilion Fund.

by Naomi Dyer aged 11 years.

SIBFORD YOUTH CLUB



The Youth Club urgently require the services of willing
volunteers to act as Youth Club Leader and helper due to the
retirement of the present leader at the end of March. Unless
we find a new leader and helper, the club will almost
certainly be faced with closure, thereby denying 25 or so
youngsters of a thriving Youth Club. If you can spare
2 hours each Monday from 7-9 pm (term times), please
contact Swalcliffe 780 for details.

* * * * * S * * * * *

HELP - GOOD HOME WANTED

An imminent move by my parents leads me to seek shelter for a
small 1953 Ford Popular, soon to be homeless until renovation
allows me to put it on the road again. Anyone able to offer
shelter, however modest or temporary, please call Bryan (8397)

* * * * * S * * * * *

The Friendship Club



TUESDAY 3 MARCH - in the Village Hall at 2.00 pm
Talk on 'Photography' by Mrs Pearlman
Tea - Raffle - All Welcome

TUESDAY 17 MARCH - Outing to Moreton-in-Marsh Market
Start in Village Hall at 10.00 am
Pub Lunch at Red Lion, Little Compton

* * * * * § * * * * *

A SINCERE APPRECIATION

I am sure all of us are sorry to see the departure of David and Barbara Dyer from the shop, where for nearly 10 years we have been greeted with friendliness served with efficiency and enabled to meet our friends and keep up with Sibford news. Of course for many years before moving to the shop they were well known to us at the Post Office on the hill where they were also responsible for the supervision of Sulgrave, Warmington and Gower Post Offices.

It is interesting to know that during the 27 years of their time the weekly turnover of our Post Office has increased some tenfold.

Referring to the boys and girls of the Friends School both David and Barbara agreed that around 4 pm daily was often a hectic time but in recent years made easier by the high standard of behaviour of the pupils.

The shop is often used by visitors especially ex pupils as an inquiry and information centre when David and Barbara have been expected to remember individual pupils of 20 years ago!

On being asked if some of us did not hold up business by chatting up our friends while shopping, they firmly replied that when people enjoyed themselves it made the whole shop feel good and even increased trade.

May we ask them to accept our gratitude and appreciation of many years cheerful and efficient service and our best wishes for the future.

Anne Stephens

*** SIBFORD DAY CARE SCHEME ***

Additional Volunteers Required

As indicated in last month's Scene, the objective of this new scheme is to provide (initially once a fortnight) the chance to spend a few hours away from their homes, for frail elderly people, in the Sibford area, who are otherwise housebound and who at present have little if any social activity.

At the initial planning meeting on 14 February at Sibford School, Judith Weeks & Rodney Kane of the Social Services Dept gave details of the proposed scheme, which would provide a cooked meal followed by social activities, between noon and 3 pm, ultimately for up to about 12 people. During term-time the bulk of the work would be carried out by School sixth formers, with transport by the School mini-bus.

However, volunteers would be needed to run the scheme during school holidays and to participate on a casual basis during term-time, so as to provide continuity. Also, private cars may be needed to collect some people and/or deliver meals to those who may be too frail to leave their homes.

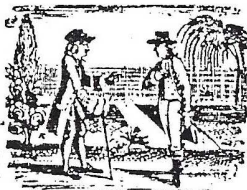
For the scheme to be viable, some more volunteers, of either sex and any age, would be needed.

If you think you could spare a few hours a month or would like to receive full details of the scheme, please contact Judith Weeks (257676) or Gill Manthorpe at the School (441) or Ray Hembrey (8265).

It is hoped to start the scheme on a modest scale on Wednesday 25 March, and a second planning meeting will be held at 7 pm on Monday 9 March at Sibford School. RH

* * * * * S * * * * *

Horticultural Society



'Garden Festivals' & 'Annual Visit to Gardens'

Snowdrops & daffodils are starting to come out of hibernation and the Horti Society will follow suit at 8 pm on 11 March in the Village Hall. To start our year, Mr Neil Mattinson, a new Sibford resident and landscape architect, who was involved in both the Gateshead and Liverpool Garden Festivals, will give us a unique insight into these modern phenomena in a talk entitled 'Garden Festivals - Horticultural Excellence or Cream Teas & Candy Floss?' Non-members are welcome to attend.

A date for your diary - Saturday 4 July. Our annual coach trip will be to the beautiful Spetchley Park Gardens & Stone House Cottage Gardens, in Worcestershire. Both have large nurseries for plant purchases. A picnic area will be available or lunch can be purchased. The total cost for coach and gardens will be about £6-£8. More details at the March meeting. RH

CAR WASH

* * * * *

SIBFORD SCOUTS

* --- CAR WASH --- *

* Saturday 14 March 10am - 1pm *

Sibford Primary School

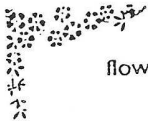
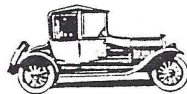
* Charge: £1 per car *

* Coffee & Biscuits on sale *

while you wait *

* In Aid of Scout Funds *

* * * * *



flowers for all occasions

Petals


43a Market Place, Banbury, Oxon. OX16 8NW
 (Next to Laura Ashley)
 Telephone: (0295) 255450



CURTAINS & ACCESSORIES
 specially made for you by
 ANN WOOLGROVE

Good quality LININGS & TAPE
 available by the metre for
 your own requirements.
 Competitive prices.

Tel.: Swalcliffe 8145



STUART & JOYCE
 welcome you at

"THE GATE HANGS HIGH"
 Hook Norton

Traditional ales in our friendly pub
 with excellent food available in the
 restaurant. Open seven days per week.
 Bar only Tuesday & Sunday evenings.

Tel.: 0608 737387 Bookings advisable
 "The Gate Hangs High & Hinders None.
 Refresh & Pay & Travel on"

Telephone: Swalcliffe 8101

Gower Products

Traditional Upholstery
 Antique Restoration
 Furniture Makers




SIBFORD GOWER, BANBURY, OXON.

NORTH OXFORDSHIRE CONSERVATIVE ASSOCIATION
SIBFORDS & POWELL BRANCH

ANNUAL GENERAL MEETING

The A.G.M. of the Branch will take place on SATURDAY MARCH 7th. 1992 at 7.15 p.m. at the MANOR HOUSE, SIBFORD GOWER. All supporters are welcome, whether members or not, especially in view of the imminent General Election. Drinks will be available.

WOOD CHIPS, for garden mulch. For sale at £2.50 per bag. Approx. 2.5 sq/M per bag. Phone Helen Lamb on Swal.380.

CAROL & JOHN
extend a warm welcome to all at
The Wykeham Arms
Feel at home the minute you step through the door. Hot & Cold Bar Snacks, also a full A LA CARTE RESTAURANT
Come as a Guest and leave as a Friend
Sibford Gower, Nr. Banbury, Oxon.
Tel.: 0295 78 351

HAY & STRAW
SUPPLIED
Small quantities catered for.
Tel.: SWALCLIFFE 786
HOOK NORTON 73727A



Hook Norton Wines
Vendors of Good Wines



We sell 140 interesting wines. For informative list and friendly advice contact:

Brendan Dubock

Bardfield, Bourne Lane, Hook Norton, Banbury, Oxon. OX1 5 PF
Tel. No: 0608 737502

DOES YOUR BUSINESS NEED A BOOST?
SCRIBES INC.
Contact experienced journalists
A. ADAMS and L. POWELL
for all your publicity and PR needs.
Tel: Swalcliffe 8495



**KRANAL
ELECTRICAL**
Domestic & Commercial
Contractor
J. Burns
Tel: (0295) 720728
21 Newcombe Close
Milcombe,
Banbury
Oxon. OX15 4RN



IT'S BROWN ENVELOPE TIME!

The *Sibford Scene* is your free Village Magazine, delivered to your door ten times a year.

It costs about £750 per annum to produce and distribute; our treasurer would also like to budget for a further £100 p.a. towards depreciation of the photocopier.

The *Scene* relies almost solely on voluntary contributions, plus a small income from advertising. We hope that sufficient money can be collected during our one major effort per year.

It is hoped that all households will contribute - as a guide we ask you to consider a donation of a minimum of £2 per household or £1 for single-occupancy homes. Many kind friends give far more than this - Bless You!

Enclosed you will find a *Brown Envelope* to assist you in your donation. Please put your contribution in the envelope now as you read this - YES NOW! Put the filled envelope behind the clock on the mantelpiece until you go out!

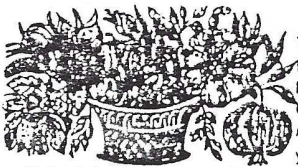


Then pop your filled envelope in the letter box of one of the addresses listed on the opposite page - no stamp to buy, no addressing to do - what could be easier?

PLEASE do this as soon as you can - our funds are desperately low, as are our stocks of paper. The total thus collected will be published in next month's *Scene*.

(During a similar exercise for the newly-designed Swalcliffe & Tadmerton 'Link' a total of £707 was contributed. I'm sure we can do even better - we are keeping our fingers crossed.)

* * * * * S * * * * *



Whichford Pottery
Whichford

Stipston-on-Stour
Warwickshire CV36 3PG

Long Compton (060884) 416

Fax (060884) 833

Top quality terracotta by traditional methods, from plain 6" seed pans right up to 42" Baroque Urns.

All our pots carry a 10 year Guarantee against frost.

Open Mon - Fri 9 a.m.
to 5 p.m. Sat 10 a.m.
to 4 p.m.

The Fits Garage

HOOK NORTON, BANBURY, OXON.

TELEPHONE: HOOK NORTON 0608 737349

FAX NO.: 0498 730271

Vehicle Sales, Service + MOT
Accident Repairs, Petrol,
Forecourt Shop, Car Wash, etc



DAIHATSU

BROWN ENVELOPES - DONATION COLLECTING POINTS

- FERRIS - The Village Shop, Main Street
 Jim Shields, 1 Westtown Cottages, Woodway Road
 Ray Henbrey, Virginia Cottage, Hook Norton Road
 Kathleen Horn, 3 Cotswold Close
- BURDROP - Margaret Cox, Westways
- GOWER - Erica Wimbush, New Rectory, Main Street
 Mollie Mulley, The Old Post Office, Main Street
 Barry Davies, Stonecutters Cottage, Bonds End Lane
 Jean White, Whitts End, Ponds End
 Kathleen Winter, Cels Field, Backside Lane
 Ann Spicer, 7 High Meadow
 Petra Berry, 2 Barley Close
 Jean Puddle, 3 Sycamore Close
 Roger Powell, 6 The Colony

* * * * * S * * * * *


CHILDMINDER has vacancies
 during term time &
 school holidays
 Phone: 9 - 730202

Directory of Local Services

- A : Art & Design JENNIFER MEALSBY, Grace Cottage,
 Bells Lane, Hook Norton [0608 730401]
- C : Carpets RAY RANDERSON [Suppliers & Fitters of
 Contract & Domestic carpets & Flooring
 [0295 89721]
- E : Electrician JOHN BAKER [Domestic/Agricultural/
 Industrial] [Swalcliffe 409]
- M : Mobile Stores R. W. STOWE - delivers to The Sibfords
 & Burdrop EVERY TUESDAY. [0608 737804]
- P : Plumbing & Heating DAVID BUTLER, Lilac Cottage, Upper
 Tadmarton, Nr Banbury [029578 668]
- T : Taxi CHIPPING NORTON TAXIS, 12 Robins Close,
 Great Rollright [0608 737467]

J. W. BAKER
 Electrical Repairs & Installation
 Tel.: Swalcliffe [0295 78] 409
 [Quoting this advertisement]
 Domestic Agricultural Industrial
 work undertaken promptly

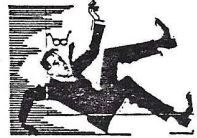
DECOR SERVICE
 CONTACT
 BRUCE HORN
 your local PAINTER & DECORATOR
 Tel.: Swalcliffe 658



Sibford Gower Parish Council

At our recent meeting the following items were discussed. The footpath sign at Shaw's Corner will be replaced soon.

The Council is concerned about the amount of mud on Hawkes Lane due to the building work in Burdrop. Villagers must take extra care as it can be very slippery.



The Council is awaiting written permission from TWA to refill the village pond and return the fish. The village Litter Blitz will be on Saturday 11 April at 2 pm at the Village Hall. The Council hopes there will be plenty of volunteers to help tidy up the village.



The Council discussed the possibility of having a skip in the village, maybe on a monthly basis. Further details to follow.

The next PC meeting is on 3 April and the Annual Parish Meeting will be held on 30 April.

Petra Berry
Clerk to the Council


* * * * * S * * * * *

HELPLINES HELPLINES

The Samaritans	Banbury 270000
Young People's Helpline	(0865) 310810
'Life' Pregnancy Counselling Service	Banbury 261257
Banbury Family Centre	Banbury 266358
Katherine House Counselling Service	Banbury 272216
Victim Support Schemes	(0869) 40751
Relate (Marriage Guidance)	Banbury 258141
Cancer Link	(0865) 257946
Banbury Community Transport Assoc.	Banbury 255863
Oxfordshire Rural Community Council	(0865) 512488

(Knowledge is power, and those who feel powerless, in need or fear can be helped by knowing who to contact for support and advice. If you know of a helpline not listed above, please submit the details to Banbury & District CVS.)


RALPH C. HOGGINS
MIDDLE TYSOE
WARWICKSHIRE
CV35 0SE
 Tel. TYSOE 281 (STD 029 588)



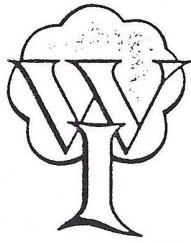
SOLID FUELS/LOGS
SIGAS Bottled Gas
GARDEN PEAT/COMPOST
GROW BAGS/SHARP SAND
 etc.

Bloxham Office Secretarial Service

Typing : Word Processing : Audio
 Professional preparation of CVs
 Private tuition in Word Processing
 Confidential and efficient service



Call the B.O.S.S. on (0295) 720337



SIBFORD WOMEN'S INSTITUTE

NEWS AND INFORMATION

A second talk by Mrs Hutchinson on Australia, illustrated by excellent colour slides, enlivened a dull February afternoon. This set of photographs showed Australian life - and wild-life on the Eastern Coast from Sydney up to Newcastle and then in Cairns and some islands in the Barrier Reef. Mrs Hutchinson manages to include many aspects of life and persuades an interesting cross-section of people to be photographed and the whole result was very informative and much appreciated.

Mrs Law and Miss Bennett served teas, including cakes sent by Mrs Webb.

A competition for the best pot of jelly was won by Mrs Power, 2nd Mrs Crabtree, 3rd Mrs Eildred.

During the business session reports were given on the recent Resolution selection meeting, and the Education & Public Affairs meeting on "Law and Order", both of which meetings were attended in January and found to be very worthwhile

More suggestions would be welcome to complete the programme of meetings for the year commencing May 12th 1992.

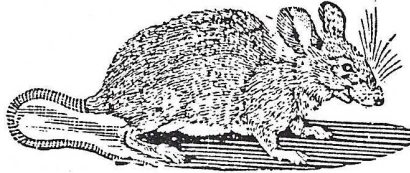
The next monthly meeting will be held on March 10th at 2 P.M. in the Village Hall and will be addressed by a representative of Penshurst School. A competition for a small plate of sweets will be held, and these will be donated to the school.

'Dirty Tricks' Department Reaches Sibford??

The pre-election misdeeds are hotting up. There's a leak at the NHS, Labour Party floppy discs are missing and Paddy is fraying round the edges.

Now - worst of all - a very ancient Lib-Lab mouse came out of hibernation and got into the heavy printing presses of the Sibford Scene at the end of January - thus delaying publication for more than a week. - Sorry Folks!

Identikit
Picture
of
the
Suspect



Have
You
Seen
This
Mouse?

Unfortunately the mouse has survived (to tell the tail?) - he may well strike again!!

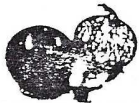
Latest News: All may be well - A Cheshire cat is 'helping the Police with their enquiries'.

* * * * * S * * * * *

ADMARTON POST OFFICE & STORES & NEWSAGENTS

General Grocery, frozen food, THAYERS Ice cream, confectionery, home-cooked ham.

Home delivery of newspapers & magazines. Should you require a delivery please contact HELEN BUTLER at above or 'phone SWALCLIFFE (0295 78) 668.



9 - 1 2 - 5.30
(Mon /Tues/Thurs/Fri/Sat
9 - 12.30 (Wednesday)
10 - 12 noon (Sunday)

SIBFORD VILLAGE STORES

Tel.: 029578 795

High quality Grocers & Greengrocery. Wine & Spirits, small toys, wrapping paper, ACCORD cards. Video Film Rental. Cookie Coach cakes & biscuits.

Phone for Free Delivery

Tysoe Country Florists

Christine and Lillian

Flowers for all Occasions

Tel: (0295) 88707

MAIN STREET
TYSOE, WARWICKS
CV35 0SE

Fresh, Dried & Silk



A FENCING ERECTOR

A. C. DYER

All sizes of fencing panels to fit your requirements. Competitive prices. Fitting on request. Also GARDEN MACHINERY - Sales & Service. For quality at the right price - telephone 060884 608 Michford.



The Friends' School

Once again, the past month has seen a wide variety of events taking place at school, reflecting the vigorous activity of another busy term.

A major annual event is now Sibford School's Book Week. It was distinguished this year by the presence of the award-winning children's author Ann Pilling, who spoke to several groups of pupils of different ages about her writing. The chance to talk to such a well-known literary figure was eagerly seized, and pupils' enthusiasm, once kindled, shone brightly through the week-long programme, which included both a Quiz and a splendid Book Fair to round off the proceedings.

While some of our oldest scholars were attending courses in tractor driving-with considerable success -, some of the youngest were preparing for a new venture. On 18th February, every pupil in the Junior Department at Orchard Close was involved in a lunchtime concert, which incorporated music and instruments of all styles. Despite the morning's snowfall, many parents were able to attend, and clearly enjoyed the occasion immensely.

Every Sunday evening, the boarders gather in the Hall for Evening Meeting. Often, we are able to welcome outside speakers, and our last visitor before half-term was Sir John Burgh, who spoke most memorably on the theme of treating others as one would wish to be treated oneself. Sir John, currently President of Trinity College, Oxford, was formerly Director of the British Council, and it was a special pleasure to welcome him back, since he is also a Sibford Old Scholar.

Many in the villages have now been able to come and enjoy the use of the Sports Hall and Squash Courts, and our other facilities are being regularly improved too. The Drama Department took advantage of a review of the Oliver Studio's lighting system to hold a professionally run lighting workshop for senior pupils. Meanwhile, in one of the school's Information technology Bases, a new network system has now been fully established, and is already in daily use by eager pupils and staff.

The Sixth Form have started their luncheon club for elderly people; the Fifth Form are making their choices of study for next year and having mock interviews, thanks to the kindness of many local visiting professionals in many fields; the Lower School Drama group are preparing an exciting production of "Ernie's Incredible Illucinations" (directed by a member of the Sixth form). and as well as all this, the vital daily routine continues.

Coming up soon:

Saturday 7th March: * Recital in the Hall by the outstanding French pianist Bernard d'Ascoli
2nd-20th March: Trip to the Black Country Museum
14th March: * Banbury Young Musician of the Year Finals in the Hall
29th March: Sibford School's 150th Anniversary Meeting for Worship in the Gower Meeting House
4th April: * "Israel in Egypt", performed in Coventry Cathedral by Friends' Schools Joint Choirs.
(Tickets available from school for events Marked *)

Finally, our congratulations on the arrival of a truly Sibford baby, Robert: a first son to Lisa and Andrew Chowne (Senior Mistress and Head of Mathematics respectively) and grandson to Shirley Chowne (Bursar's Secretary).

- - CARPET FOR SALE - -
 Unusual Octagonal (6ft 7in across) carpet
 Oriental Design - 100% Worsted Wool Pile
 Mothproofed - as new - £50 - Phone 8265



* * * * S * * * *
 - - SIBFORD FERRIS OPEN GARDENS - -
 for the National Gardens Scheme
 Sunday 7 June 2.00pm - 6.00pm
Make a note in your diary now!
 * * * * S * * * *



CALLANETICS FITNESS CLASSES
 at the
 FRIENDS SCHOOL
 SPORTS HALL
 SIBFORD FERRIS
 Every Thursday at 8 p.m.
 1 Callanetics Class is equivalent to
 24 Aerobics in terms of visible results
 Telephone: Swalcliffe 605

ODESSEY DISCO
 For weddings, parties,
 anniversaries or any
 special occasion.
 Telephone Steve on:
 Swalcliffe 0295 78 556
 CHILDRENS PARTIES A SPECIALITY

PIANO - ORGAN - ACCORDION - KEYBOARD
 T U I T I O N
 In your own home if required
 Telephone:
FRANCIS GEORGE
 Swalcliffe 8101

**PAINTINGS
 FOR SALE**
 AT THE PICTURE SHOP
 SIBFORD FERRIS
 OPEN EVERY WEEKEND
 TEL: 0295-78-234

STATE REGISTERED CHIROPODIST
 CAROL CORDINGLEY
 SRGOL
 Home Visits By Appointment
 Telephone: Banbury (0295) 720862



Sibford Ferris Housing This Century.



From Dyers to Warmingtons and from Little London to Oddies, as children in the 1930's, we knew who lived in every house in the village, and very few changes took place. Many of the cottages were rented and some must have been bursting at the seams. Most houses known by the name of the person living there, apart from some of the larger houses and Little London, which appears to have had that name for many years.

In this century, Home Close was built before the first world war, on the site of an old barn and cottage, and between the wars, Beech Cottage, The Small House and Richmond House were built; but it was after the second war that the real expansion took place.

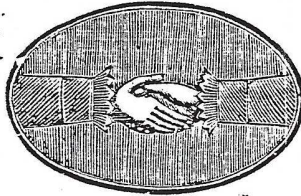
There have been 28 council houses and bungalows replacing 5 previous dwellings, 5 barn conversions and 31 other new dwellings. The Old School (Manor), the New School and the Boys and Girls houses are not included in this tally, although they do have accomodation for single and married staff, but the school bungalows up Back Lane and the houses in Hillfield are included. In two or three cases, 2 or more cottages have been made into one, and in one or two cases a house has been divided into two, but 64 new dwellings in the second half of the century, with only 4 in the first half, is quite impressive. Two cottages near the entrance to Mannings Close and two at Rymell's Corner (Hook Norton road corner) have gone altogether. Houses outside the immediate village, like Shortlands and Austins Ground have not been included.

There were about 44 dwellings occupied in my youth and Holly House was where the Doctor lived and was privately owned. This meant that the only access to the Hill was along the Back Lane and that was the way all building materials must have gone when it was built, as well as all the traffic for the next 20 years or so, (a safer exit than Holly House Drive!). Cows were regularly brought down the lane for milking in the buildings behind the Old House (now part of Lambs Croft).

With the increased changes in ownership and the greater number of houses, it is no wonder that our aging brains have difficulty in keeping up with all the names (of houses and occupiers!)

Ina Lamb.

WELCOME
TO
SIBFORD



ALL
NEWCOMERS

If you have recently joined us and have not yet received a copy of the 'Welcome to Sibford' leaflet, please telephone Petra Berry on Swa. 462 (Gower or Burdrop) or Jane Holliday on Swa. 500 (Ferris) and a copy will be delivered to you. The information will help to make you feel at home - by acquainting you with the services, schools, churches, clubs and societies that are currently active in the villages.

This month we say "Welcome" to the following newcomers:

Philip Wileman has moved into Ferris Cottage. He is a Science Teacher at Stour Valley Community School and has come from Suffolk. He has a lodger, Sue Watson, who is a Residential Social Worker in Kidlington.

David McAuley is living at 2 Westtown Cottages in the Ferris. He works for the Social Services in Banbury, dealing with families and young children.

* * * * S * * * *

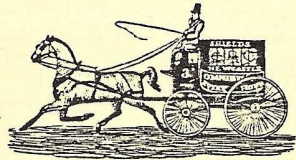
THE SCENE'S NEWS GATHERING SERVICE



"Look here," said the Brigadier from the depths of his leather armchair in the Sibford Army and Navy Club, "There's never any news in this Sibford Scene rag. This Editor Johnnie doesn't know his job! Should be cashiered!"

"Quite right", said the Admiral, waking up with a salty grunt. "Keel-hauled! Never any reports of the rough stuff - murder, marriage or muggings. Think I'll write to my Bank Manager and cancel my subscription." He went back to sleep and the Brigadier sank the bottom half of his burrah peg and turned to page 3 of his batman's morning paper.

[Editor's note - We very much regret this well deserved criticism but our bath chair just won't go up and down these Sibford hills and we rely entirely on Loyal Citizens to provide copy about the happenings in their lane. So - please everybody please help with news, however trivial you think it may be. It doesn't have to be murder. Successes, marriages or births will do nicely. Thanks. Please send in news about people in your lane every month.]



SIBFORD BUS SERVICES

1. SIBFORD GOWER TOWN ESTATES CHARITY

Free Bus Service for Sibford Gower and Burdrop Residents

			Depart	Return
Wednesday	4 & 18 March	to Chippy	11.00am	1.00pm
Friday	13 & 27 March	to Banbury	10.00am	12.00noon
Wednesday	1 April	to Chippy	11.00am	1.00pm

The pick-up points are:

<u>to Banbury</u>	<u>to Chippy</u>
Village Hall	Village Hall
Cross Roads	High Meadow
High Meadow	Cross Roads
	The Colony

2. REGULAR BUS SERVICE - BRAILES COACHES.

Brailes - Banbury - amendments - Monday, Wednesday, Friday ONLY

Pick up at Sibford Gower.....	1.15pm
Return from Banbury Bus Station...	2.45pm

Shipston - Banbury - Monday & Saturday

Pick up at Sibford Gower.....	9.50am
Return from Banbury Bus Station...	12.15pm

3. REGULAR BUS SERVICE - MIDLAND RED. 480 Sibford Gower - Banbury

Leave from Sibford Gower	Mon-Sat	Extra Buses on
	7.30am	Saturdays
	9.05am	3.00pm
	12.00noon	5.30pm
	(11.55 Tuesday)	

Return from Banbury Bus Station	11.30am
	2.30pm
	5.05pm
	6.05pm



Forthcoming Events

4 April	Saturday	Friends Schools Choirs - Coventry Cathedral
8 April	Wednesday	Horti Society Meeting
9 April	Thursday	Fashion Show - Village Hall
11 April	Saturday	Gower Litter Blitz - Village Hall 2pm
23 April	Thursday	Village Quiz - Village Hall
28 April	Tuesday	Sibford Ferris Annual Parish Meeting
30 April	Thursday	Sibford Gower Annual Parish Meeting
10 May	Sunday	Rothmans National Village Cricket Comp. Sibford v Tiddington Full details later
13 May	Wednesday	Horti Society Meeting
23-25 May		Flower Festival Weekend
7 June	Sunday	National Gardens Scheme - Ferris Gardens open
20 June	Saturday	Conservative 'Summer Event'
27 June	Saturday	'Shindig' at Temple Mill - Pig roast/Dancing
27-28 June	Sat/Sun	'Open Weekend' in the Sibfords
4 July	Saturday	Horti Coach Trip - Two Worcestershire Gardens
19 July	Sunday	National Gardens Scheme - Gower Gardens open
22 August	Saturday	Horti Society Annual Show - Friends School

CHURCH SERVICES

Society of Friends			Sunday at 10.30 am
Methodist			Sunday at 11.00 am
Roman Catholic Mass (Hook Norton)			Sunday at 11.00 am
(Brailes)			Sunday at 11.30 am
Baptist (Hook Norton)			Sunday at 10.30 am
Church of England, Holy Trinity, Sibford Gower			
1 March	10.00 am	United Eucharist at Epwell	
8 "	10.00 am	Holy Communion	
15 "	10.00 am	Family Service	
22 "	10.00 am	Holy Communion	
29 "	10.00 am	Family Service, Mothering Sunday	
4 March	7.30 am	Holy Communion, Ash Wednesday	
4 "	8.00 pm	Evening Eucharist at Swalcliffe	
Thursdays	7.30 am	Holy Communion	
in Lent			



WEEKLY EVENTS

Guides	Hook Norton	Monday	evening
Youth Club	Village Hall	Monday	7.00 - 9.00 pm
Senior Citizens Lunch	Primary School	Tuesday	
Mobile Shop		Tuesday	10.00am - 4.00pm
Brownies	Village Hall	Tuesday	5.15 - 6.45 pm
Folk Dancing	Village Hall	Tuesday	8.00 pm
Badminton	Village Hall	Wednesday	8.00 pm
Mums & Toddlers	Orchard Close	Wednesday	10.30am - 12noon
Callanettec Fitness	Friends School	Thursday	8.00 pm
Beavers	Village Hall	Friday	4.30 - 5.45 pm
Cub Scouts	Village Hall	Friday	6.00 pm
Scouts	Village Hall	Friday	following Cubs
Playgroup	Village Hall	Mon, Wed, Fri	9.00 am - 12 noon
Sibford Sports Club	Friends School	Mon - Sat	6.00 - 7.30 pm
		Sunday	10.00am - 12.30pm

CALENDAR for MARCH 1992

Monday	2nd	Sibford Cricket Club AGM - Friends School	7.30 pm
Tuesday	3rd	Friendship Club - Village Hall - Photography	2pm
Tuesday	3rd	Sibford Ferris P C Meeting - Friends School Library	
Saturday	7th	Scouts Newspaper/Magazine Collection	
Saturday	7th	Conservative AGM & Dinner - Manor House, Gower	7.15 pm
Saturday	7th	d'Ascoli Piano Recital at Friends School Hall	
Monday	9th	Day Care Scheme meeting - Friends School	7.00 pm
Tuesday	10th	WI Meeting - Village Hall - 'Penshurst School'	2pm
Wednesday	11th	Mobile Library in Sibfords & Burdrop	(2.25 - 4.20 pm)
Wednesday	11th	Horti Society - Village Hall - 'Garden Festivals'	8pm
Saturday	14th	Scouts Car Wash - Primary School - 10am to 1pm	
Saturday	14th	Banbury Young Musician Finals - Friends School	
Tuesday	17th	Friendship Club - Outing to Moreton Market/Pub Lunch	
Tuesday	17th	LEO Club - USA Slides - Virginia Cottage, Sib. Ferris	
Wednesday	25th	Mobile Library in Sibfords & Burdrop	(2.25 - 4.20 pm)
Sunday	29th	Start of Friends School 150th Anniversary	

CALENDAR for APRIL 1992 (partial)

Friday	3rd	Sibford Gower Parish Council Meeting	
Saturday	4th	Scouts Newspaper/Magazine Collection	
Saturday	4th	Friends Schools Joint Choirs - Coventry Cathedral	

* * SIBFORD SCENE * *

Editor - Barry Davies, Stonecutters Cottage, Bonds End Lane,
Sibford Gower (Tele: 291)

Asst Editor - Ray Henbrey (8265) Treasurer - Timothy Wimbush (555)

Advertising Secretary - Muriel Chandler (759)

Cost of Adverts: personal 50p, large £1.00, larger still - ask Editor

Display Advertising: £15.00 per year

*** COPY for APRIL ISSUE to THE EDITOR by 20 MARCH PLEASE ***